



Full wwPDB X-ray Structure Validation Report ⓘ

Feb 14, 2017 – 07:44 am GMT

PDB ID : 4NSE
Title : BOVINE ENDOTHELIAL NITRIC OXIDE SYNTHASE, H4B-FREE, L-ARG COMPLEX
Authors : Raman, C.S.; Li, H.; Martasek, P.; Kral, V.; Masters, B.S.S.; Poulos, T.L.
Deposited on : 1998-10-07
Resolution : 1.95 Å(reported)

This is a Full wwPDB X-ray Structure Validation Report for a publicly released PDB entry.

We welcome your comments at validation@mail.wwpdb.org

A user guide is available at

<http://wwpdb.org/validation/2016/XrayValidationReportHelp>

with specific help available everywhere you see the ⓘ symbol.

The following versions of software and data (see [references ⓘ](#)) were used in the production of this report:

MolProbity	:	4.02b-467
Mogul	:	1.7.2 (RC1), CSD as538be (2017)
Xtriage (Phenix)	:	NOT EXECUTED
EDS	:	NOT EXECUTED
Percentile statistics	:	20161228.v01 (using entries in the PDB archive December 28th 2016)
Ideal geometry (proteins)	:	Engh & Huber (2001)
Ideal geometry (DNA, RNA)	:	Parkinson et al. (1996)
Validation Pipeline (wwPDB-VP)	:	recalc28949

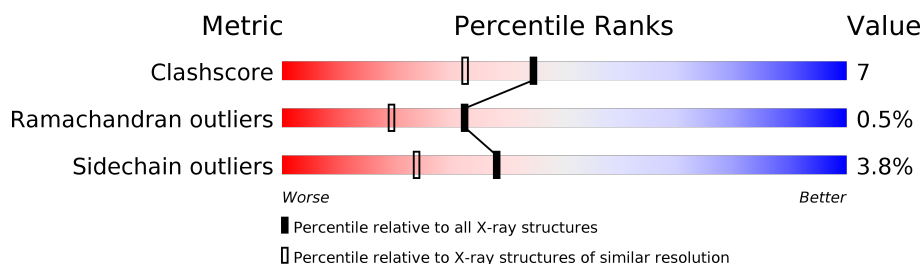
1 Overall quality at a glance

The following experimental techniques were used to determine the structure:

X-RAY DIFFRACTION

The reported resolution of this entry is 1.95 Å.

Percentile scores (ranging between 0-100) for global validation metrics of the entry are shown in the following graphic. The table shows the number of entries on which the scores are based.



Metric	Whole archive (#Entries)	Similar resolution (#Entries, resolution range(Å))
Clashscore	112137	2136 (1.96-1.96)
Ramachandran outliers	110173	2117 (1.96-1.96)
Sidechain outliers	110143	2117 (1.96-1.96)

The table below summarises the geometric issues observed across the polymeric chains and their fit to the electron density. The red, orange, yellow and green segments on the lower bar indicate the fraction of residues that contain outliers for ≥ 3 , 2, 1 and 0 types of geometric quality criteria. A grey segment represents the fraction of residues that are not modelled. The numeric value for each fraction is indicated below the corresponding segment, with a dot representing fractions $\leq 5\%$. The upper red bar (where present) indicates the fraction of residues that have poor fit to the electron density. The numeric value is given above the bar.

Note EDS was not executed.

Mol	Chain	Length	Quality of chain
1	A	444	
1	B	444	

2 Entry composition [i](#)

There are 8 unique types of molecules in this entry. The entry contains 7133 atoms, of which 0 are hydrogens and 0 are deuteriums.

In the tables below, the ZeroOcc column contains the number of atoms modelled with zero occupancy, the AltConf column contains the number of residues with at least one atom in alternate conformation and the Trace column contains the number of residues modelled with at most 2 atoms.

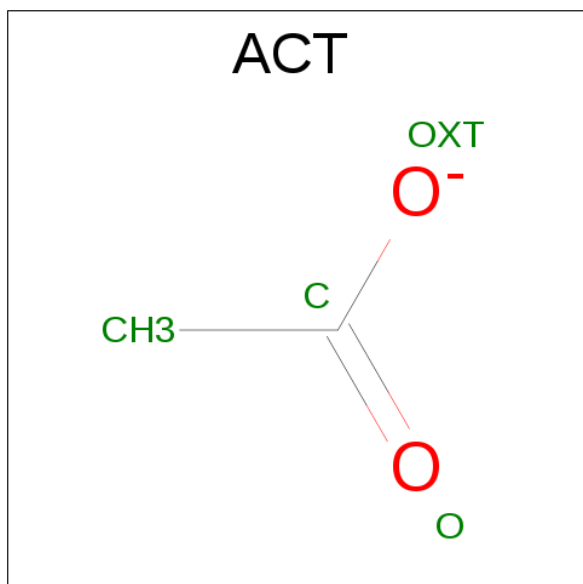
- Molecule 1 is a protein called NITRIC OXIDE SYNTHASE.

Mol	Chain	Residues	Atoms					ZeroOcc	AltConf	Trace
1	A	416	Total	C	N	O	S	0	0	0
			3302	2099	584	603	16			
1	B	414	Total	C	N	O	S	0	0	0
			3291	2092	582	601	16			

There are 2 discrepancies between the modelled and reference sequences:

Chain	Residue	Modelled	Actual	Comment	Reference
A	100	ARG	CYS	CONFLICT	UNP P29473
B	100	ARG	CYS	CONFLICT	UNP P29473

- Molecule 2 is ACETATE ION (three-letter code: ACT) (formula: $C_2H_3O_2$).



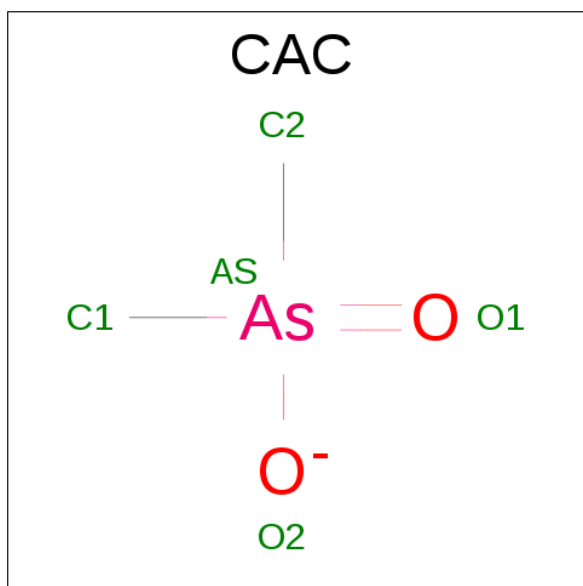
Mol	Chain	Residues	Atoms			ZeroOcc	AltConf
2	A	1	Total	C	O	0	0
			4	2	2		

Continued on next page...

Continued from previous page...

Mol	Chain	Residues	Atoms			ZeroOcc	AltConf
2	B	1	Total	C	O	0	0
			4	2	2		

- Molecule 3 is CACODYLATE ION (three-letter code: CAC) (formula: $\text{C}_2\text{H}_6\text{AsO}_2$).

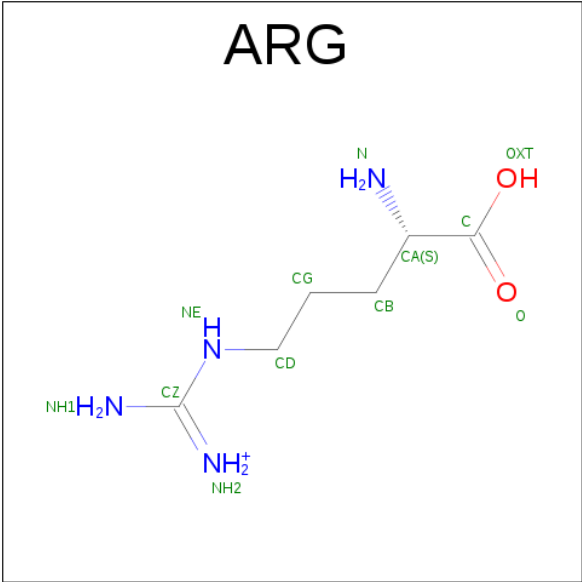


Mol	Chain	Residues	Atoms			ZeroOcc	AltConf
3	A	1	Total	As	C	0	0
			3	1	2		
3	B	1	Total	As	C	0	0
			3	1	2		

- Molecule 4 is ZINC ION (three-letter code: ZN) (formula: Zn).

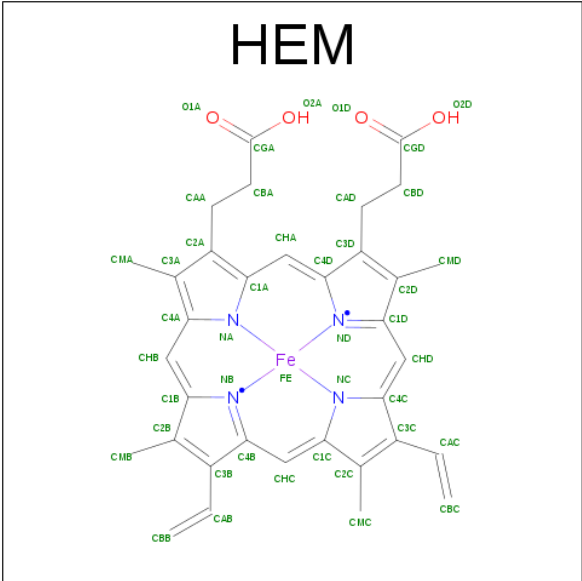
Mol	Chain	Residues	Atoms		ZeroOcc	AltConf
4	B	1	Total	Zn	0	0
			1	1		

- Molecule 5 is ARGININE (three-letter code: ARG) (formula: $\text{C}_6\text{H}_{15}\text{N}_4\text{O}_2$).



Mol	Chain	Residues	Atoms				ZeroOcc	AltConf
5	A	1	Total	C	N	O	0	0
			12	6	4	2		
5	B	1	Total	C	N	O	0	0
			12	6	4	2		

- Molecule 6 is PROTOPORPHYRIN IX CONTAINING FE (three-letter code: HEM) (formula: C₃₄H₃₂FeN₄O₄).



Mol	Chain	Residues	Atoms				ZeroOcc	AltConf
6	A	1	Total	C	Fe	N	O	0
			43	34	1	4	4	

Continued on next page...

Continued from previous page...

Mol	Chain	Residues	Atoms					ZeroOcc	AltConf
6	B	1	Total	C	Fe	N	O	0	0
			43	34	1	4	4		

- Molecule 7 is GLYCEROL (three-letter code: GOL) (formula: $C_3H_8O_3$).



Mol	Chain	Residues	Atoms			ZeroOcc	AltConf
7	A	1	Total	C	O	0	0
			6	3	3		
7	A	1	Total	C	O	0	0
			6	3	3		
7	B	1	Total	C	O	0	0
			6	3	3		

- Molecule 8 is water.

Mol	Chain	Residues	Atoms		ZeroOcc	AltConf
8	A	205	Total	O	0	0
			205	205		
8	B	192	Total	O	0	0
			192	192		

3 Residue-property plots

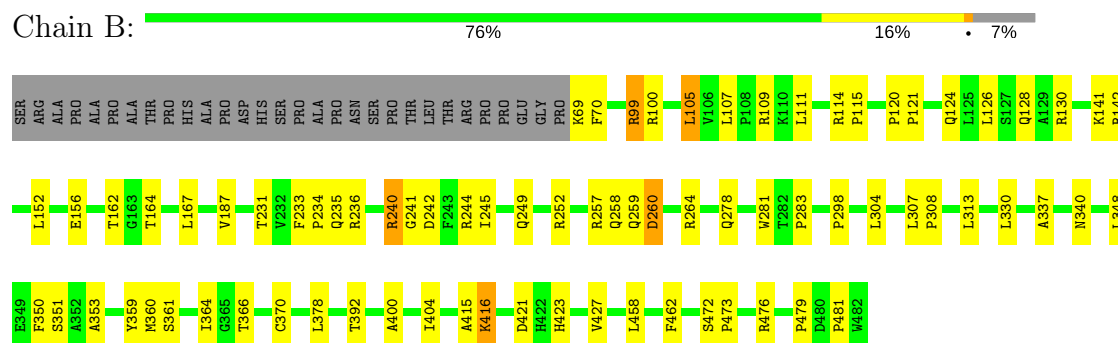
These plots are drawn for all protein, RNA and DNA chains in the entry. The first graphic for a chain summarises the proportions of the various outlier classes displayed in the second graphic. The second graphic shows the sequence view annotated by issues in geometry and electron density. Residues are color-coded according to the number of geometric quality criteria for which they contain at least one outlier: green = 0, yellow = 1, orange = 2 and red = 3 or more. A red dot above a residue indicates a poor fit to the electron density ($RSRZ > 2$). Stretches of 2 or more consecutive residues without any outlier are shown as a green connector. Residues present in the sample, but not in the model, are shown in grey.

Note EDS was not executed.

• Molecule 1: NITRIC OXIDE SYNTHASE



• Molecule 1: NITRIC OXIDE SYNTHASE



4 Data and refinement statistics

Xtriage (Phenix) and EDS were not executed - this section is therefore incomplete.

Property	Value	Source
Space group	P 21 21 21	Depositor
Cell constants a, b, c, α , β , γ	57.66Å 106.10Å 155.75Å 90.00° 90.00° 90.00°	Depositor
Resolution (Å)	30.00 – 1.95	Depositor
% Data completeness (in resolution range)	80.3 (30.00-1.95)	Depositor
R_{merge}	(Not available)	Depositor
R_{sym}	0.05	Depositor
Refinement program	X-PLOR 3.8	Depositor
R, R_{free}	0.212 , 0.260	Depositor
Estimated twinning fraction	No twinning to report.	Xtriage
Total number of atoms	7133	wwPDB-VP
Average B, all atoms (Å ²)	37.0	wwPDB-VP

5 Model quality [i](#)

5.1 Standard geometry [i](#)

Bond lengths and bond angles in the following residue types are not validated in this section: CAC, GOL, ZN, HEM, ACT

The Z score for a bond length (or angle) is the number of standard deviations the observed value is removed from the expected value. A bond length (or angle) with $|Z| > 5$ is considered an outlier worth inspection. RMSZ is the root-mean-square of all Z scores of the bond lengths (or angles).

Mol	Chain	Bond lengths		Bond angles	
		RMSZ	$\# Z > 5$	RMSZ	$\# Z > 5$
1	A	0.43	0/3397	0.66	1/4631 (0.0%)
1	B	0.42	0/3385	0.67	2/4614 (0.0%)
All	All	0.42	0/6782	0.67	3/9245 (0.0%)

There are no bond length outliers.

All (3) bond angle outliers are listed below:

Mol	Chain	Res	Type	Atoms	Z	Observed(°)	Ideal(°)
1	B	360	MET	N-CA-C	-5.56	96.00	111.00
1	B	245	ILE	N-CA-C	-5.49	96.17	111.00
1	A	360	MET	N-CA-C	-5.26	96.79	111.00

There are no chirality outliers.

There are no planarity outliers.

5.2 Too-close contacts [i](#)

In the following table, the Non-H and H(model) columns list the number of non-hydrogen atoms and hydrogen atoms in the chain respectively. The H(added) column lists the number of hydrogen atoms added and optimized by MolProbity. The Clashes column lists the number of clashes within the asymmetric unit, whereas Symm-Clashes lists symmetry related clashes.

Mol	Chain	Non-H	H(model)	H(added)	Clashes	Symm-Clashes
1	A	3302	0	3215	57	0
1	B	3291	0	3205	47	0
2	A	4	0	3	0	0
2	B	4	0	3	0	0
3	A	3	0	0	0	0
3	B	3	0	0	0	0

Continued on next page...

Continued from previous page...

Mol	Chain	Non-H	H(model)	H(added)	Clashes	Symm-Clashes
4	B	1	0	0	0	0
5	A	12	0	12	0	0
5	B	12	0	12	0	0
6	A	43	0	30	0	0
6	B	43	0	30	0	0
7	A	12	0	16	1	0
7	B	6	0	8	0	0
8	A	205	0	0	4	0
8	B	192	0	0	1	0
All	All	7133	0	6534	99	0

The all-atom clashscore is defined as the number of clashes found per 1000 atoms (including hydrogen atoms). The all-atom clashscore for this structure is 7.

All (99) close contacts within the same asymmetric unit are listed below, sorted by their clash magnitude.

Atom-1	Atom-2	Interatomic distance (Å)	Clash overlap (Å)
1:B:114:ARG:HD3	1:B:479:PRO:HG3	1.45	0.94
1:A:114:ARG:HG3	1:A:115:PRO:HD2	1.46	0.94
1:A:115:PRO:HD3	1:A:479:PRO:HG2	1.54	0.88
1:B:115:PRO:HD3	1:B:479:PRO:HG2	1.66	0.77
1:B:114:ARG:HD3	1:B:479:PRO:CG	2.14	0.76
1:A:95:PRO:HA	1:A:110:LYS:HG3	1.68	0.75
1:A:111:LEU:HD23	1:A:477:TYR:CE2	2.26	0.70
1:A:111:LEU:HG	1:A:111:LEU:O	1.92	0.69
1:A:340:ASN:HD22	1:A:340:ASN:H	1.41	0.66
1:A:240:ARG:HD3	1:A:298:PRO:HB3	1.78	0.65
1:A:114:ARG:HG3	1:A:115:PRO:CD	2.25	0.64
1:B:378:LEU:HB2	8:B:1055:HOH:O	1.96	0.64
1:B:162:THR:HG22	1:B:164:THR:HG22	1.80	0.62
1:A:119:PRO:HB3	1:A:238:PRO:HB3	1.81	0.62
1:B:361:SER:OG	1:B:421:ASP:HA	2.00	0.61
1:A:95:PRO:CA	1:A:110:LYS:HG3	2.31	0.61
1:A:378:LEU:HB2	8:A:1103:HOH:O	1.99	0.60
1:A:246:TRP:HB2	1:A:294:LEU:HB3	1.84	0.59
1:B:111:LEU:O	1:B:476:ARG:HB3	2.03	0.59
1:B:370:CYS:SG	1:B:378:LEU:HD13	2.43	0.59
1:A:69:LYS:HG3	1:A:69:LYS:O	2.04	0.58
1:B:126:LEU:O	1:B:130:ARG:HG3	2.04	0.57
1:B:366:THR:O	1:B:370:CYS:HB2	2.04	0.57
1:A:257:ARG:HG3	1:A:257:ARG:HH11	1.70	0.57

Continued on next page...

Continued from previous page...

Atom-1	Atom-2	Interatomic distance (Å)	Clash overlap (Å)
1:B:313:LEU:HD11	1:B:416:LYS:HE3	1.89	0.54
1:A:274:GLU:O	1:A:278:GLN:HG3	2.08	0.54
1:B:281:TRP:HB2	1:B:304:LEU:HD21	1.90	0.54
1:A:465:GLU:OE1	1:B:105:LEU:HD13	2.08	0.54
1:B:400:ALA:O	1:B:404:ILE:HG13	2.08	0.54
1:A:340:ASN:HD22	1:A:340:ASN:N	2.06	0.54
1:A:423:HIS:HB2	1:B:392:THR:HB	1.90	0.53
1:B:99:ARG:HH11	1:B:99:ARG:HB3	1.73	0.53
1:B:152:LEU:O	1:B:156:GLU:HG3	2.09	0.53
1:B:415:ALA:HB1	1:B:416:LYS:HE2	1.91	0.53
1:A:168:ARG:HB2	1:A:171:GLU:HG3	1.91	0.53
1:A:126:LEU:HD11	1:A:156:GLU:HG3	1.92	0.51
1:A:122:ALA:O	1:A:126:LEU:HB2	2.11	0.51
1:A:308:PRO:HD2	1:A:311:LEU:HD22	1.93	0.51
1:A:240:ARG:HD3	1:A:298:PRO:CB	2.41	0.50
1:B:240:ARG:HD2	1:B:241:GLY:O	2.11	0.50
1:A:257:ARG:NH1	1:A:257:ARG:HG3	2.26	0.50
1:A:108:PRO:HD2	8:A:1125:HOH:O	2.11	0.50
1:A:69:LYS:HE3	1:A:69:LYS:HA	1.94	0.50
1:B:142:ARG:NE	1:B:142:ARG:HA	2.27	0.49
1:A:112:GLN:OE1	1:A:114:ARG:NH2	2.45	0.49
1:A:338:VAL:HB	1:A:355:PHE:CZ	2.48	0.49
1:B:236:ARG:HD2	1:B:242:ASP:OD1	2.13	0.48
1:B:236:ARG:HD3	1:B:351:SER:HB3	1.96	0.47
1:B:359:TYR:CD2	1:B:364:ILE:HD11	2.49	0.47
1:A:322:LEU:HD13	1:A:324:TRP:CZ2	2.49	0.47
1:B:423:HIS:O	1:B:427:VAL:HG23	2.15	0.47
1:A:472:SER:HA	1:A:473:PRO:C	2.36	0.46
1:B:281:TRP:O	1:B:283:PRO:HD3	2.16	0.46
1:B:231:THR:O	1:B:353:ALA:HA	2.15	0.46
1:A:455:SER:O	1:A:458:LEU:HB2	2.15	0.45
1:B:167:LEU:HG	1:B:348:LEU:HD12	1.98	0.45
1:A:114:ARG:CG	1:A:115:PRO:HD2	2.33	0.45
1:A:129:ALA:O	1:A:133:ILE:HG12	2.16	0.45
1:A:111:LEU:HD13	8:A:1092:HOH:O	2.16	0.45
1:A:231:THR:O	1:A:353:ALA:HA	2.16	0.45
1:B:233:PHE:HB3	1:B:234:PRO:CD	2.47	0.45
1:B:416:LYS:HE2	1:B:416:LYS:H	1.82	0.45
1:A:310:GLU:H	1:A:310:GLU:CD	2.19	0.45
1:A:126:LEU:HB3	1:A:130:ARG:NH2	2.33	0.45
1:A:249:GLN:HB2	1:A:252:ARG:HG2	1.99	0.44

Continued on next page...

Continued from previous page...

Atom-1	Atom-2	Interatomic distance (Å)	Clash overlap (Å)
1:A:127:SER:HA	1:A:130:ARG:NH1	2.33	0.44
1:A:366:THR:O	1:A:370:CYS:HB2	2.17	0.44
1:B:244:ARG:NH2	1:B:481:PRO:HD3	2.32	0.44
1:A:111:LEU:HD23	1:A:477:TYR:HE2	1.81	0.44
1:B:130:ARG:HB3	1:B:130:ARG:NH1	2.33	0.44
1:A:99:ARG:HG2	8:A:1118:HOH:O	2.17	0.43
1:A:120:PRO:HA	1:A:121:PRO:HD2	1.87	0.43
1:B:240:ARG:HD3	1:B:298:PRO:HB3	2.01	0.43
1:B:187:VAL:HG22	1:B:187:VAL:O	2.18	0.43
1:B:249:GLN:HB2	1:B:252:ARG:HG2	2.00	0.43
1:A:151:ARG:O	1:A:155:VAL:HG23	2.19	0.43
1:A:398:ASP:O	1:A:402:VAL:HG23	2.18	0.43
1:A:458:LEU:HG	1:B:378:LEU:HD21	2.01	0.43
1:B:120:PRO:HA	1:B:121:PRO:HD3	1.89	0.42
1:A:126:LEU:O	1:A:130:ARG:HG3	2.19	0.42
1:A:359:TYR:CD2	1:A:364:ILE:HD11	2.55	0.42
1:A:392:THR:HB	1:B:423:HIS:HB2	2.01	0.42
1:A:361:SER:OG	1:A:421:ASP:HA	2.19	0.42
1:B:249:GLN:HA	1:B:337:ALA:O	2.20	0.42
1:B:258:GLN:O	1:B:260:ASP:N	2.54	0.41
1:A:378:LEU:HD21	1:B:458:LEU:HG	2.02	0.41
7:A:890:GOL:H2	1:B:462:PHE:CE1	2.56	0.41
1:A:240:ARG:HD2	1:A:241:GLY:O	2.20	0.41
1:B:307:LEU:HA	1:B:308:PRO:HD3	1.95	0.41
1:A:194:LYS:HE3	1:A:194:LYS:HB2	1.79	0.41
1:A:294:LEU:HA	1:A:294:LEU:HD12	1.85	0.41
1:A:99:ARG:HA	1:A:99:ARG:HD3	1.76	0.41
1:A:137:TYR:HA	1:A:140:ILE:HG12	2.03	0.40
1:B:124:GLN:O	1:B:128:GLN:HG3	2.21	0.40
1:B:472:SER:HA	1:B:473:PRO:C	2.42	0.40
1:B:69:LYS:HG2	1:B:70:PHE:N	2.35	0.40
1:A:340:ASN:ND2	1:A:340:ASN:H	2.10	0.40
1:B:235:GLN:HB3	1:B:350:PHE:CE2	2.56	0.40
1:B:162:THR:O	1:B:162:THR:HG22	2.20	0.40

There are no symmetry-related clashes.

5.3 Torsion angles

5.3.1 Protein backbone

In the following table, the Percentiles column shows the percent Ramachandran outliers of the chain as a percentile score with respect to all X-ray entries followed by that with respect to entries of similar resolution.

The Analysed column shows the number of residues for which the backbone conformation was analysed, and the total number of residues.

Mol	Chain	Analysed	Favoured	Allowed	Outliers	Percentiles	
1	A	414/444 (93%)	394 (95%)	18 (4%)	2 (0%)	32	19
1	B	412/444 (93%)	390 (95%)	20 (5%)	2 (0%)	32	19
All	All	826/888 (93%)	784 (95%)	38 (5%)	4 (0%)	32	19

All (4) Ramachandran outliers are listed below:

Mol	Chain	Res	Type
1	B	259	GLN
1	A	122	ALA
1	B	260	ASP
1	A	69	LYS

5.3.2 Protein sidechains

In the following table, the Percentiles column shows the percent sidechain outliers of the chain as a percentile score with respect to all X-ray entries followed by that with respect to entries of similar resolution.

The Analysed column shows the number of residues for which the sidechain conformation was analysed, and the total number of residues.

Mol	Chain	Analysed	Rotameric	Outliers	Percentiles	
1	A	354/377 (94%)	340 (96%)	14 (4%)	36	21
1	B	353/377 (94%)	340 (96%)	13 (4%)	39	25
All	All	707/754 (94%)	680 (96%)	27 (4%)	38	24

All (27) residues with a non-rotameric sidechain are listed below:

Mol	Chain	Res	Type
1	A	69	LYS
1	A	100	ARG

Continued on next page...

Continued from previous page...

Mol	Chain	Res	Type
1	A	102	LEU
1	A	113	THR
1	A	114	ARG
1	A	124	GLN
1	A	126	LEU
1	A	169	GLU
1	A	236	ARG
1	A	285	ASN
1	A	293	LEU
1	A	328	LEU
1	A	340	ASN
1	A	390	ARG
1	B	99	ARG
1	B	100	ARG
1	B	105	LEU
1	B	107	LEU
1	B	109	ARG
1	B	141	LYS
1	B	240	ARG
1	B	257	ARG
1	B	264	ARG
1	B	278	GLN
1	B	330	LEU
1	B	340	ASN
1	B	416	LYS

Some sidechains can be flipped to improve hydrogen bonding and reduce clashes. All (13) such sidechains are listed below:

Mol	Chain	Res	Type
1	A	166	HIS
1	A	191	GLN
1	A	278	GLN
1	A	285	ASN
1	A	340	ASN
1	A	376	ASN
1	A	468	ASN
1	B	191	GLN
1	B	222	ASN
1	B	225	ASN
1	B	340	ASN
1	B	376	ASN
1	B	405	ASN

5.3.3 RNA ⓘ

There are no RNA molecules in this entry.

5.4 Non-standard residues in protein, DNA, RNA chains ⓘ

There are no non-standard protein/DNA/RNA residues in this entry.

5.5 Carbohydrates ⓘ

There are no carbohydrates in this entry.

5.6 Ligand geometry ⓘ

Of 12 ligands modelled in this entry, 1 is monoatomic - leaving 11 for Mogul analysis.

In the following table, the Counts columns list the number of bonds (or angles) for which Mogul statistics could be retrieved, the number of bonds (or angles) that are observed in the model and the number of bonds (or angles) that are defined in the chemical component dictionary. The Link column lists molecule types, if any, to which the group is linked. The Z score for a bond length (or angle) is the number of standard deviations the observed value is removed from the expected value. A bond length (or angle) with $|Z| > 2$ is considered an outlier worth inspection. RMSZ is the root-mean-square of all Z scores of the bond lengths (or angles).

Mol	Type	Chain	Res	Link	Bond lengths			Bond angles		
					Counts	RMSZ	# $ Z > 2$	Counts	RMSZ	# $ Z > 2$
6	HEM	A	500	1	28,50,50	1.69	6 (21%)	17,82,82	1.50	4 (23%)
5	ARG	A	700	-	6,11,11	0.30	0	5,13,13	0.48	0
2	ACT	A	860	-	1,3,3	2.52	1 (100%)	0,3,3	0.00	-
7	GOL	A	880	-	5,5,5	0.39	0	5,5,5	0.33	0
7	GOL	A	890	-	5,5,5	0.25	0	5,5,5	0.30	0
3	CAC	A	950	1	0,2,4	0.00	-	0,1,6	0.00	-
6	HEM	B	500	1	28,50,50	1.59	5 (17%)	17,82,82	1.48	3 (17%)
5	ARG	B	700	-	6,11,11	0.18	0	5,13,13	0.46	0
2	ACT	B	860	-	1,3,3	2.59	1 (100%)	0,3,3	0.00	-
7	GOL	B	880	-	5,5,5	0.35	0	5,5,5	0.30	0
3	CAC	B	950	1	0,2,4	0.00	-	0,1,6	0.00	-

In the following table, the Chirals column lists the number of chiral outliers, the number of chiral centers analysed, the number of these observed in the model and the number defined in the chemical component dictionary. Similar counts are reported in the Torsion and Rings columns. '-' means no outliers of that kind were identified.

Mol	Type	Chain	Res	Link	Chirals	Torsions	Rings
6	HEM	A	500	1	-	0/6/54/54	0/0/8/8
5	ARG	A	700	-	-	0/7/11/11	0/0/0/0
2	ACT	A	860	-	-	0/0/0/0	0/0/0/0
7	GOL	A	880	-	-	0/4/4/4	0/0/0/0
7	GOL	A	890	-	-	0/4/4/4	0/0/0/0
3	CAC	A	950	1	-	0/0/0/0	0/0/0/0
6	HEM	B	500	1	-	0/6/54/54	0/0/8/8
5	ARG	B	700	-	-	0/7/11/11	0/0/0/0
2	ACT	B	860	-	-	0/0/0/0	0/0/0/0
7	GOL	B	880	-	-	0/4/4/4	0/0/0/0
3	CAC	B	950	1	-	0/0/0/0	0/0/0/0

All (13) bond length outliers are listed below:

Mol	Chain	Res	Type	Atoms	Z	Observed(Å)	Ideal(Å)
6	B	500	HEM	C3B-CAB	-3.91	1.40	1.47
6	B	500	HEM	C3B-C2B	-3.82	1.35	1.40
6	B	500	HEM	C3C-CAC	-3.23	1.41	1.47
6	A	500	HEM	C3B-CAB	-3.12	1.41	1.47
6	A	500	HEM	C3C-CAC	-2.94	1.41	1.47
6	B	500	HEM	C3C-C2C	-2.60	1.36	1.40
6	A	500	HEM	C1A-NA	2.03	1.40	1.36
6	A	500	HEM	C4C-NC	2.04	1.39	1.36
6	B	500	HEM	CAD-C3D	2.32	1.56	1.52
2	A	860	ACT	CH3-C	2.52	1.52	1.48
2	B	860	ACT	CH3-C	2.59	1.52	1.48
6	A	500	HEM	C4B-NB	2.73	1.42	1.36
6	A	500	HEM	C4D-ND	5.24	1.43	1.36

All (7) bond angle outliers are listed below:

Mol	Chain	Res	Type	Atoms	Z	Observed(°)	Ideal(°)
6	B	500	HEM	CBA-CAA-C2A	-4.15	104.56	112.48
6	A	500	HEM	CBA-CAA-C2A	-3.11	106.54	112.48
6	B	500	HEM	C4C-C3C-C2C	-2.30	105.29	106.90
6	A	500	HEM	CMA-C3A-C4A	-2.28	124.96	128.46
6	A	500	HEM	C4C-C3C-C2C	-2.27	105.31	106.90
6	B	500	HEM	CMD-C2D-C1D	-2.03	125.34	128.46
6	A	500	HEM	C3B-C4B-NB	2.62	112.60	109.21

There are no chirality outliers.

There are no torsion outliers.

There are no ring outliers.

1 monomer is involved in 1 short contact:

Mol	Chain	Res	Type	Clashes	Symm-Clashes
7	A	890	GOL	1	0

5.7 Other polymers [i](#)

There are no such residues in this entry.

5.8 Polymer linkage issues [i](#)

There are no chain breaks in this entry.

6 Fit of model and data

6.1 Protein, DNA and RNA chains

EDS was not executed - this section is therefore empty.

6.2 Non-standard residues in protein, DNA, RNA chains

EDS was not executed - this section is therefore empty.

6.3 Carbohydrates

EDS was not executed - this section is therefore empty.

6.4 Ligands

EDS was not executed - this section is therefore empty.

6.5 Other polymers

EDS was not executed - this section is therefore empty.