



Full wwPDB X-ray Structure Validation Report ⓘ

Jul 5, 2017 – 12:12 PM EDT

PDB ID : 5NUZ
Title : Junin virus GP1 glycoprotein in complex with an antibody Fab fragment
Authors : Zeltina, A.; Krumm, S.A.; Sahin, M.; Struwe, W.B.; Harlos, K.; Nunberg, J.H.; Crispin, M.; Pinschewer, D.D.; Doores, K.J.; Bowden, T.A.
Deposited on : unknown
Resolution : 1.85 Å(reported)

This is a Full wwPDB X-ray Structure Validation Report for a publicly released PDB entry.

We welcome your comments at validation@mail.wwpdb.org

A user guide is available at

<http://wwpdb.org/validation/2016/XrayValidationReportHelp>

with specific help available everywhere you see the ⓘ symbol.

The following versions of software and data (see [references ⓘ](#)) were used in the production of this report:

MolProbity	:	4.02b-467
Mogul	:	1.7.2 (RC1), CSD as538be (2017)
Xtriage (Phenix)	:	1.9-1692
EDS	:	rb-20029824
Percentile statistics	:	20161228.v01 (using entries in the PDB archive December 28th 2016)
Refmac	:	5.8.0135
CCP4	:	6.5.0
Ideal geometry (proteins)	:	Engh & Huber (2001)
Ideal geometry (DNA, RNA)	:	Parkinson et al. (1996)
Validation Pipeline (wwPDB-VP)	:	rb-20029824

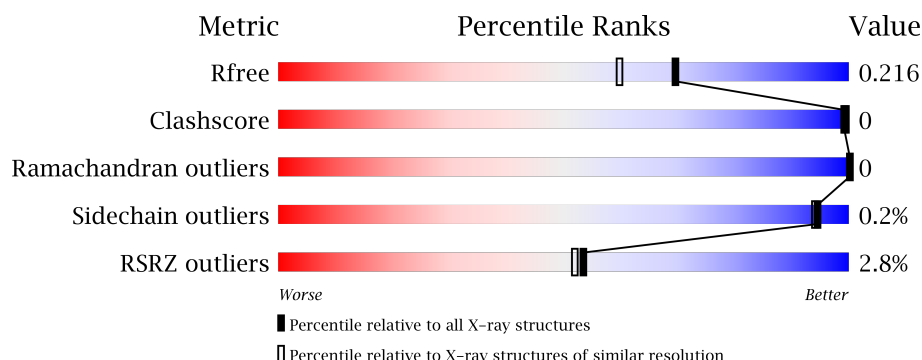
1 Overall quality at a glance

The following experimental techniques were used to determine the structure:

X-RAY DIFFRACTION

The reported resolution of this entry is 1.85 Å.

Percentile scores (ranging between 0-100) for global validation metrics of the entry are shown in the following graphic. The table shows the number of entries on which the scores are based.




Metric	Whole archive (#Entries)	Similar resolution (#Entries, resolution range(Å))
R_{free}	100719	1923 (1.86-1.86)
Clashscore	112137	2083 (1.86-1.86)
Ramachandran outliers	110173	2060 (1.86-1.86)
Sidechain outliers	110143	2060 (1.86-1.86)
RSRZ outliers	101464	1932 (1.86-1.86)

The table below summarises the geometric issues observed across the polymeric chains and their fit to the electron density. The red, orange, yellow and green segments on the lower bar indicate the fraction of residues that contain outliers for ≥ 3 , 2, 1 and 0 types of geometric quality criteria. A grey segment represents the fraction of residues that are not modelled. The numeric value for each fraction is indicated below the corresponding segment, with a dot representing fractions $\leq 5\%$. The upper red bar (where present) indicates the fraction of residues that have poor fit to the electron density. The numeric value is given above the bar.

Mol	Chain	Length	Quality of chain
1	A	231	
1	H	231	
2	B	221	
2	L	221	
3	C	156	

Continued on next page...

Continued from previous page...

Mol	Chain	Length	Quality of chain
3	D	156	

The following table lists non-polymeric compounds, carbohydrate monomers and non-standard residues in protein, DNA, RNA chains that are outliers for geometric or electron-density-fit criteria:

Mol	Type	Chain	Res	Chirality	Geometry	Clashes	Electron density
4	GOL	A	302	-	-	-	X
4	GOL	A	303	-	-	-	X
4	GOL	B	301	-	-	-	X
4	GOL	B	302	-	-	-	X
4	GOL	B	303	-	-	-	X
4	GOL	C	308	-	-	-	X
4	GOL	H	301	-	-	-	X
4	GOL	H	302	-	-	-	X
4	GOL	L	301	-	-	-	X
4	GOL	L	302	-	-	-	X
5	IPA	A	305	-	-	-	X
5	IPA	H	305	-	-	-	X
6	NAG	D	301	-	-	-	X
8	MAN	D	307	-	-	-	X
8	MAN	D	308	-	-	-	X

2 Entry composition

There are 9 unique types of molecules in this entry. The entry contains 10177 atoms, of which 0 are hydrogens and 0 are deuteriums.

In the tables below, the ZeroOcc column contains the number of atoms modelled with zero occupancy, the AltConf column contains the number of residues with at least one atom in alternate conformation and the Trace column contains the number of residues modelled with at most 2 atoms.

- Molecule 1 is a protein called eOD01 heavy chain.

Mol	Chain	Residues	Atoms					ZeroOcc	AltConf	Trace
1	A	215	Total	C	N	O	S	0	3	0
			1657	1051	271	326	9			
1	H	215	Total	C	N	O	S	0	1	0
			1643	1043	268	323	9			

- Molecule 2 is a protein called eOD01 light chain.

Mol	Chain	Residues	Atoms					ZeroOcc	AltConf	Trace
2	B	218	Total	C	N	O	S	0	1	0
			1682	1045	282	347	8			
2	L	219	Total	C	N	O	S	0	1	0
			1686	1048	282	348	8			

- Molecule 3 is a protein called Pre-glycoprotein polyprotein GP complex.

Mol	Chain	Residues	Atoms					ZeroOcc	AltConf	Trace
3	C	142	Total	C	N	O	S	0	0	0
			1150	740	194	206	10			
3	D	142	Total	C	N	O	S	0	0	0
			1150	740	194	206	10			

There are 20 discrepancies between the modelled and reference sequences:

Chain	Residue	Modelled	Actual	Comment	Reference
C	84	GLU	-	expression tag	UNP C1K9J9
C	85	THR	-	expression tag	UNP C1K9J9
C	86	GLY	-	expression tag	UNP C1K9J9
C	233	LYS	-	expression tag	UNP C1K9J9
C	234	HIS	-	expression tag	UNP C1K9J9
C	235	HIS	-	expression tag	UNP C1K9J9
C	236	HIS	-	expression tag	UNP C1K9J9
C	237	HIS	-	expression tag	UNP C1K9J9

Continued on next page...

Continued from previous page...

Chain	Residue	Modelled	Actual	Comment	Reference
C	238	HIS	-	expression tag	UNP C1K9J9
C	239	HIS	-	expression tag	UNP C1K9J9
D	84	GLU	-	expression tag	UNP C1K9J9
D	85	THR	-	expression tag	UNP C1K9J9
D	86	GLY	-	expression tag	UNP C1K9J9
D	233	LYS	-	expression tag	UNP C1K9J9
D	234	HIS	-	expression tag	UNP C1K9J9
D	235	HIS	-	expression tag	UNP C1K9J9
D	236	HIS	-	expression tag	UNP C1K9J9
D	237	HIS	-	expression tag	UNP C1K9J9
D	238	HIS	-	expression tag	UNP C1K9J9
D	239	HIS	-	expression tag	UNP C1K9J9

- Molecule 4 is GLYCEROL (three-letter code: GOL) (formula: $C_3H_8O_3$).



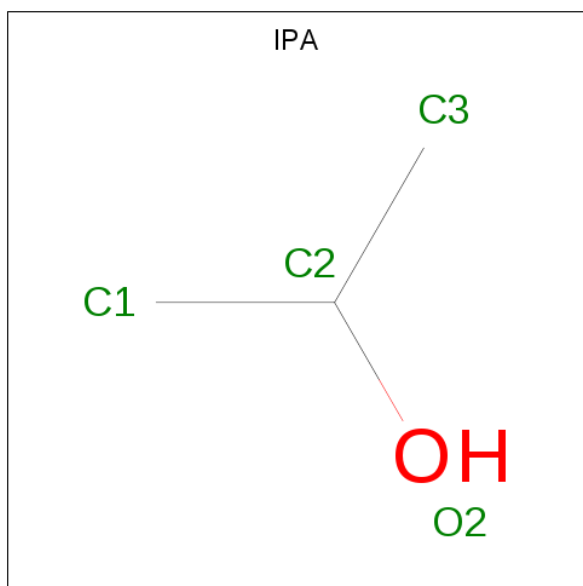
Mol	Chain	Residues	Atoms			ZeroOcc	AltConf
4	A	1	Total	C	O	0	0
			6	3	3		
4	A	1	Total	C	O	0	0
			6	3	3		
4	A	1	Total	C	O	0	0
			6	3	3		
4	H	1	Total	C	O	0	0
			6	3	3		
4	H	1	Total	C	O	0	0
			6	3	3		

Continued on next page...

Continued from previous page...

Mol	Chain	Residues	Atoms			ZeroOcc	AltConf
4	B	1	Total	C	O	0	0
			6	3	3		
4	B	1	Total	C	O	0	0
			6	3	3		
4	B	1	Total	C	O	0	0
			6	3	3		
4	C	1	Total	C	O	0	0
			6	3	3		
4	L	1	Total	C	O	0	0
			6	3	3		
4	L	1	Total	C	O	0	0
			6	3	3		

- Molecule 5 is ISOPROPYL ALCOHOL (three-letter code: IPA) (formula: C₃H₈O).



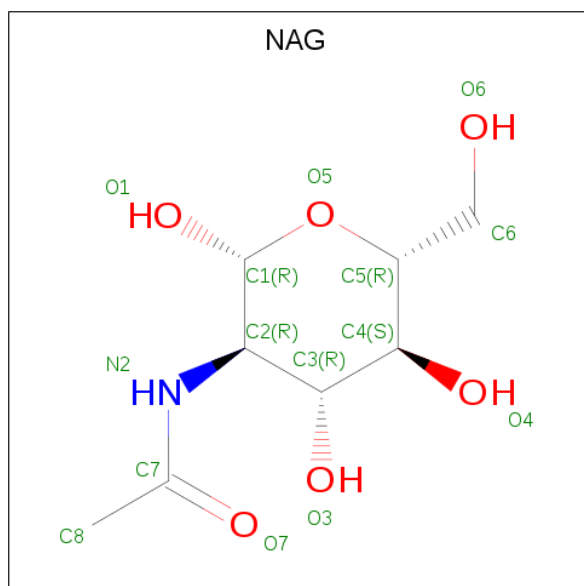
Mol	Chain	Residues	Atoms			ZeroOcc	AltConf
5	A	1	Total	C	O	0	0
			4	3	1		
5	A	1	Total	C	O	0	0
			4	3	1		
5	H	1	Total	C	O	0	0
			4	3	1		
5	H	1	Total	C	O	0	0
			4	3	1		
5	H	1	Total	C	O	0	0
			4	3	1		

Continued on next page...

Continued from previous page...

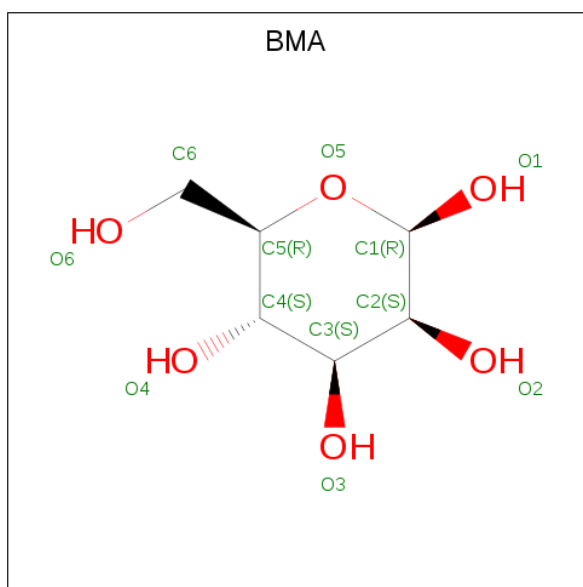
Mol	Chain	Residues	Atoms			ZeroOcc	AltConf
5	L	1	Total	C	O	0	0
			4	3	1		

- Molecule 6 is N-ACETYL-D-GLUCOSAMINE (three-letter code: NAG) (formula: $C_8H_{15}NO_6$).



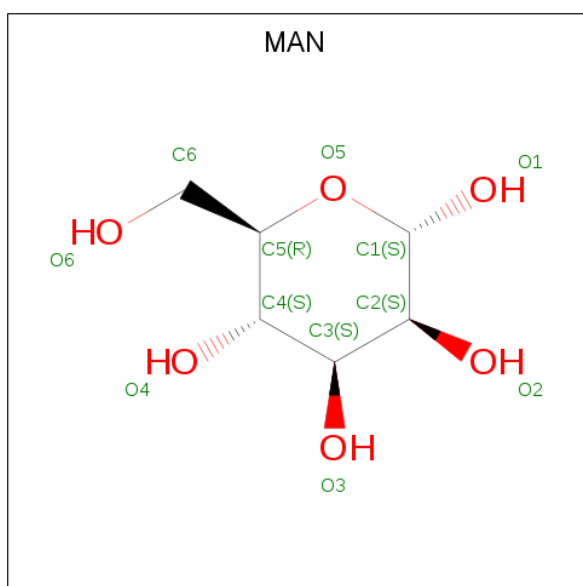
Mol	Chain	Residues	Atoms				ZeroOcc	AltConf
6	C	1	Total	C	N	O	0	0
			14	8	1	5		
6	C	1	Total	C	N	O	0	0
			14	8	1	5		
6	C	1	Total	C	N	O	0	0
			14	8	1	5		
6	D	1	Total	C	N	O	0	0
			14	8	1	5		
6	D	1	Total	C	N	O	0	0
			14	8	1	5		
6	D	1	Total	C	N	O	0	0
			14	8	1	5		

- Molecule 7 is BETA-D-MANNOSE (three-letter code: BMA) (formula: $C_6H_{12}O_6$).



Mol	Chain	Residues	Atoms			ZeroOcc	AltConf
7	C	1	Total	C	O	0	0
			11	6	5		
7	D	1	Total	C	O	0	0
			11	6	5		

- Molecule 8 is ALPHA-D-MANNOSE (three-letter code: MAN) (formula: C₆H₁₂O₆).



Mol	Chain	Residues	Atoms			ZeroOcc	AltConf
8	C	1	Total	C	O	0	0
			11	6	5		
8	C	1	Total	C	O	0	0
			11	6	5		

Continued on next page...

Continued from previous page...

Mol	Chain	Residues	Atoms	ZeroOcc	AltConf
8	C	1	Total C O 11 6 5	0	0
8	D	1	Total C O 11 6 5	0	0
8	D	1	Total C O 11 6 5	0	0
8	D	1	Total C O 11 6 5	0	0
8	D	1	Total C O 11 6 5	0	0
8	D	1	Total C O 11 6 5	0	0
8	D	1	Total C O 11 6 5	0	0

- Molecule 9 is water.

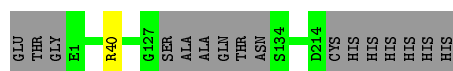
Mol	Chain	Residues	Atoms	ZeroOcc	AltConf
9	A	183	Total O 183 183	0	0
9	H	194	Total O 194 194	0	0
9	B	201	Total O 201 201	0	0
9	C	60	Total O 60 60	0	0
9	L	208	Total O 208 208	0	0
9	D	54	Total O 54 54	0	0

3 Residue-property plots [i](#)

These plots are drawn for all protein, RNA and DNA chains in the entry. The first graphic for a chain summarises the proportions of the various outlier classes displayed in the second graphic. The second graphic shows the sequence view annotated by issues in geometry and electron density. Residues are color-coded according to the number of geometric quality criteria for which they contain at least one outlier: green = 0, yellow = 1, orange = 2 and red = 3 or more. A red dot above a residue indicates a poor fit to the electron density ($RSRZ > 2$). Stretches of 2 or more consecutive residues without any outlier are shown as a green connector. Residues present in the sample, but not in the model, are shown in grey.

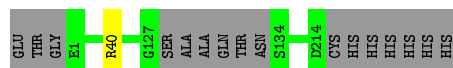
- Molecule 1: eOD01 heavy chain

Chain A: 



- Molecule 1: eOD01 heavy chain

Chain H: 



- Molecule 2: eOD01 light chain

Chain B: 




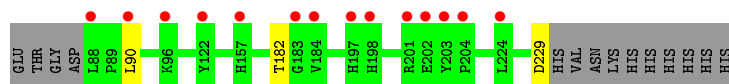
- Molecule 2: eOD01 light chain

Chain L: 




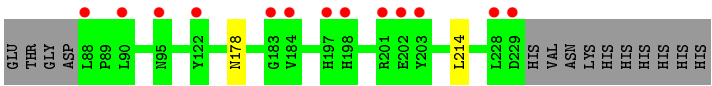
- Molecule 3: Pre-glycoprotein polypeptide GP complex

Chain C: 



- Molecule 3: Pre-glycoprotein polypeptide GP complex

Chain D: 



4 Data and refinement statistics

Property	Value	Source
Space group	P 21 21 21	Depositor
Cell constants a, b, c, α , β , γ	97.09 Å 101.91 Å 147.76 Å 90.00° 90.00° 90.00°	Depositor
Resolution (Å)	50.93 – 1.85 50.93 – 1.85	Depositor EDS
% Data completeness (in resolution range)	99.4 (50.93-1.85) 99.4 (50.93-1.85)	Depositor EDS
R_{merge}	0.13	Depositor
R_{sym}	(Not available)	Depositor
$\langle I/\sigma(I) \rangle$ ¹	2.38 (at 1.86 Å)	Xtriage
Refinement program	REFMAC 5.8.0158	Depositor
R, R_{free}	0.184 , 0.210 0.193 , 0.216	Depositor DCC
R_{free} test set	6121 reflections (5.17%)	DCC
Wilson B-factor (Å ²)	28.3	Xtriage
Anisotropy	0.462	Xtriage
Bulk solvent k_{sol} (e/Å ³), B_{sol} (Å ²)	0.34 , 41.6	EDS
L-test for twinning ²	$\langle L \rangle = 0.48$, $\langle L^2 \rangle = 0.32$	Xtriage
Estimated twinning fraction	0.017 for k,h,-l	Xtriage
F_o, F_c correlation	0.96	EDS
Total number of atoms	10177	wwPDB-VP
Average B, all atoms (Å ²)	37.0	wwPDB-VP

Xtriage's analysis on translational NCS is as follows: *The largest off-origin peak in the Patterson function is 5.60% of the height of the origin peak. No significant pseudotranslation is detected.*

¹Intensities estimated from amplitudes.

²Theoretical values of $\langle |L| \rangle$, $\langle L^2 \rangle$ for acentric reflections are 0.5, 0.333 respectively for untwinned datasets, and 0.375, 0.2 for perfectly twinned datasets.

5 Model quality [i](#)

5.1 Standard geometry [i](#)

Bond lengths and bond angles in the following residue types are not validated in this section: GOL, BMA, IPA, NAG, MAN

The Z score for a bond length (or angle) is the number of standard deviations the observed value is removed from the expected value. A bond length (or angle) with $|Z| > 5$ is considered an outlier worth inspection. RMSZ is the root-mean-square of all Z scores of the bond lengths (or angles).

Mol	Chain	Bond lengths		Bond angles	
		RMSZ	$\# Z > 5$	RMSZ	$\# Z > 5$
1	A	0.41	0/1707	0.64	1/2332 (0.0%)
1	H	0.43	0/1690	0.65	1/2309 (0.0%)
2	B	0.45	0/1720	0.68	0/2333
2	L	0.47	0/1727	0.68	0/2343
3	C	0.42	0/1186	0.58	0/1612
3	D	0.43	0/1186	0.59	0/1612
All	All	0.44	0/9216	0.64	2/12541 (0.0%)

There are no bond length outliers.

All (2) bond angle outliers are listed below:

Mol	Chain	Res	Type	Atoms	Z	Observed(°)	Ideal(°)
1	A	40	ARG	NE-CZ-NH1	5.66	123.13	120.30
1	H	40	ARG	NE-CZ-NH2	5.40	123.00	120.30

There are no chirality outliers.

There are no planarity outliers.

5.2 Too-close contacts [i](#)

In the following table, the Non-H and H(model) columns list the number of non-hydrogen atoms and hydrogen atoms in the chain respectively. The H(added) column lists the number of hydrogen atoms added and optimized by MolProbity. The Clashes column lists the number of clashes within the asymmetric unit, whereas Symm-Clashes lists symmetry related clashes.

Mol	Chain	Non-H	H(model)	H(added)	Clashes	Symm-Clashes
1	A	1657	0	1620	0	0
1	H	1643	0	1607	0	0
2	B	1682	0	1597	1	0

Continued on next page...

Continued from previous page...

Mol	Chain	Non-H	H(model)	H(added)	Clashes	Symm-Clashes
2	L	1686	0	1605	1	0
3	C	1150	0	1107	2	0
3	D	1150	0	1106	1	0
4	A	18	0	24	0	0
4	B	18	0	24	0	0
4	C	6	0	8	0	0
4	H	12	0	16	0	0
4	L	12	0	16	0	0
5	A	8	0	16	0	0
5	H	12	0	24	0	0
5	L	4	0	8	0	0
6	C	42	0	37	1	0
6	D	56	0	50	0	0
7	C	11	0	8	0	0
7	D	11	0	8	0	0
8	C	33	0	29	0	0
8	D	66	0	56	0	0
9	A	183	0	0	0	0
9	B	201	0	0	0	0
9	C	60	0	0	0	0
9	D	54	0	0	0	0
9	H	194	0	0	0	0
9	L	208	0	0	1	0
All	All	10177	0	8966	5	0

The all-atom clashscore is defined as the number of clashes found per 1000 atoms (including hydrogen atoms). The all-atom clashscore for this structure is 0.

All (5) close contacts within the same asymmetric unit are listed below, sorted by their clash magnitude.

Atom-1	Atom-2	Interatomic distance (Å)	Clash overlap (Å)
3:C:182:THR:HG21	6:C:303:NAG:H82	1.92	0.52
2:L:123:GLU:HG3	9:L:577:HOH:O	2.13	0.48
3:C:90:LEU:HD21	3:C:229:ASP:HA	1.99	0.45
3:D:178:ASN:HA	3:D:214:LEU:HD23	1.99	0.44
2:B:184:ASP:O	2:B:188:ARG:HG3	2.19	0.42

There are no symmetry-related clashes.

5.3 Torsion angles ⓘ

5.3.1 Protein backbone ⓘ

In the following table, the Percentiles column shows the percent Ramachandran outliers of the chain as a percentile score with respect to all X-ray entries followed by that with respect to entries of similar resolution.

The Analysed column shows the number of residues for which the backbone conformation was analysed, and the total number of residues.

Mol	Chain	Analysed	Favoured	Allowed	Outliers	Percentiles	
1	A	214/231 (93%)	213 (100%)	1 (0%)	0	100	100
1	H	212/231 (92%)	211 (100%)	1 (0%)	0	100	100
2	B	217/221 (98%)	213 (98%)	4 (2%)	0	100	100
2	L	218/221 (99%)	214 (98%)	4 (2%)	0	100	100
3	C	140/156 (90%)	137 (98%)	3 (2%)	0	100	100
3	D	140/156 (90%)	137 (98%)	3 (2%)	0	100	100
All	All	1141/1216 (94%)	1125 (99%)	16 (1%)	0	100	100

There are no Ramachandran outliers to report.

5.3.2 Protein sidechains ⓘ

In the following table, the Percentiles column shows the percent sidechain outliers of the chain as a percentile score with respect to all X-ray entries followed by that with respect to entries of similar resolution.

The Analysed column shows the number of residues for which the sidechain conformation was analysed, and the total number of residues.

Mol	Chain	Analysed	Rotameric	Outliers	Percentiles	
1	A	189/199 (95%)	189 (100%)	0	100	100
1	H	187/199 (94%)	187 (100%)	0	100	100
2	B	191/193 (99%)	190 (100%)	1 (0%)	91	89
2	L	192/193 (100%)	191 (100%)	1 (0%)	91	89
3	C	129/142 (91%)	129 (100%)	0	100	100
3	D	129/142 (91%)	129 (100%)	0	100	100
All	All	1017/1068 (95%)	1015 (100%)	2 (0%)	94	94

All (2) residues with a non-rotameric sidechain are listed below:

Mol	Chain	Res	Type
2	B	181	LEU
2	L	181	LEU

Some sidechains can be flipped to improve hydrogen bonding and reduce clashes. There are no such sidechains identified.

5.3.3 RNA ⓘ

There are no RNA molecules in this entry.

5.4 Non-standard residues in protein, DNA, RNA chains ⓘ

There are no non-standard protein/DNA/RNA residues in this entry.

5.5 Carbohydrates ⓘ

There are no carbohydrates in this entry.

5.6 Ligand geometry ⓘ

35 ligands are modelled in this entry.

In the following table, the Counts columns list the number of bonds (or angles) for which Mogul statistics could be retrieved, the number of bonds (or angles) that are observed in the model and the number of bonds (or angles) that are defined in the chemical component dictionary. The Link column lists molecule types, if any, to which the group is linked. The Z score for a bond length (or angle) is the number of standard deviations the observed value is removed from the expected value. A bond length (or angle) with $|Z| > 2$ is considered an outlier worth inspection. RMSZ is the root-mean-square of all Z scores of the bond lengths (or angles).

Mol	Type	Chain	Res	Link	Bond lengths			Bond angles		
					Counts	RMSZ	$\# Z > 2$	Counts	RMSZ	$\# Z > 2$
4	GOL	A	301	-	5,5,5	0.31	0	5,5,5	0.32	0
4	GOL	A	302	-	5,5,5	0.22	0	5,5,5	0.27	0
4	GOL	A	303	-	5,5,5	0.24	0	5,5,5	0.23	0
5	IPA	A	304	-	3,3,3	0.55	0	3,3,3	0.19	0
5	IPA	A	305	-	3,3,3	0.54	0	3,3,3	0.20	0
4	GOL	B	301	-	5,5,5	0.25	0	5,5,5	0.31	0
4	GOL	B	302	-	5,5,5	0.32	0	5,5,5	0.43	0
4	GOL	B	303	-	5,5,5	0.27	0	5,5,5	0.22	0

Mol	Type	Chain	Res	Link	Bond lengths			Bond angles		
					Counts	RMSZ	# Z > 2	Counts	RMSZ	# Z > 2
6	NAG	C	301	3	14,14,15	0.41	0	15,19,21	1.77	2 (13%)
6	NAG	C	302	3,6	14,14,15	0.34	0	15,19,21	0.79	0
6	NAG	C	303	7,6	14,14,15	0.34	0	15,19,21	1.42	3 (20%)
7	BMA	C	304	8,6	11,11,12	0.45	0	13,15,17	1.15	0
8	MAN	C	305	8,7	11,11,12	0.42	0	13,15,17	1.32	2 (15%)
8	MAN	C	306	8	11,11,12	0.29	0	13,15,17	1.00	1 (7%)
8	MAN	C	307	7	11,11,12	0.32	0	13,15,17	0.72	1 (7%)
4	GOL	C	308	-	5,5,5	0.18	0	5,5,5	0.23	0
6	NAG	D	301	3	14,14,15	0.37	0	15,19,21	1.11	1 (6%)
6	NAG	D	302	3	14,14,15	0.27	0	15,19,21	1.41	1 (6%)
6	NAG	D	303	3,6	14,14,15	0.41	0	15,19,21	1.14	2 (13%)
6	NAG	D	304	7,6	14,14,15	0.39	0	15,19,21	0.90	0
7	BMA	D	305	8,6	11,11,12	0.63	0	13,15,17	1.11	2 (15%)
8	MAN	D	306	8,7	11,11,12	0.49	0	13,15,17	1.57	1 (7%)
8	MAN	D	307	8	11,11,12	0.63	0	13,15,17	1.23	1 (7%)
8	MAN	D	308	8	11,11,12	0.55	0	13,15,17	0.83	0
8	MAN	D	309	8,7	11,11,12	0.43	0	13,15,17	1.07	1 (7%)
8	MAN	D	310	8	11,11,12	0.48	0	13,15,17	0.68	0
8	MAN	D	311	8	11,11,12	0.43	0	13,15,17	0.83	0
4	GOL	H	301	-	5,5,5	0.35	0	5,5,5	0.33	0
4	GOL	H	302	-	5,5,5	0.24	0	5,5,5	0.23	0
5	IPA	H	303	-	3,3,3	0.55	0	3,3,3	0.19	0
5	IPA	H	304	-	3,3,3	0.56	0	3,3,3	0.15	0
5	IPA	H	305	-	3,3,3	0.53	0	3,3,3	0.20	0
4	GOL	L	301	-	5,5,5	0.40	0	5,5,5	0.52	0
4	GOL	L	302	-	5,5,5	0.15	0	5,5,5	0.26	0
5	IPA	L	303	-	3,3,3	0.50	0	3,3,3	0.22	0

In the following table, the Chirals column lists the number of chiral outliers, the number of chiral centers analysed, the number of these observed in the model and the number defined in the chemical component dictionary. Similar counts are reported in the Torsion and Rings columns. '-' means no outliers of that kind were identified.

Mol	Type	Chain	Res	Link	Chirals	Torsions	Rings
4	GOL	A	301	-	-	0/4/4/4	0/0/0/0
4	GOL	A	302	-	-	0/4/4/4	0/0/0/0
4	GOL	A	303	-	-	0/4/4/4	0/0/0/0
5	IPA	A	304	-	-	0/0/0/0	0/0/0/0
5	IPA	A	305	-	-	0/0/0/0	0/0/0/0
4	GOL	B	301	-	-	0/4/4/4	0/0/0/0

Continued on next page...

Continued from previous page...

Mol	Type	Chain	Res	Link	Chirals	Torsions	Rings
4	GOL	B	302	-	-	0/4/4/4	0/0/0/0
4	GOL	B	303	-	-	0/4/4/4	0/0/0/0
6	NAG	C	301	3	-	0/6/23/26	0/1/1/1
6	NAG	C	302	3,6	-	0/6/23/26	0/1/1/1
6	NAG	C	303	7,6	-	0/6/23/26	0/1/1/1
7	BMA	C	304	8,6	-	0/2/19/22	0/1/1/1
8	MAN	C	305	8,7	-	0/2/19/22	0/1/1/1
8	MAN	C	306	8	-	0/2/19/22	0/1/1/1
8	MAN	C	307	7	-	0/2/19/22	0/1/1/1
4	GOL	C	308	-	-	0/4/4/4	0/0/0/0
6	NAG	D	301	3	-	0/6/23/26	0/1/1/1
6	NAG	D	302	3	-	0/6/23/26	0/1/1/1
6	NAG	D	303	3,6	-	0/6/23/26	0/1/1/1
6	NAG	D	304	7,6	-	0/6/23/26	0/1/1/1
7	BMA	D	305	8,6	-	0/2/19/22	0/1/1/1
8	MAN	D	306	8,7	-	0/2/19/22	0/1/1/1
8	MAN	D	307	8	-	0/2/19/22	0/1/1/1
8	MAN	D	308	8	-	0/2/19/22	0/1/1/1
8	MAN	D	309	8,7	-	0/2/19/22	0/1/1/1
8	MAN	D	310	8	-	0/2/19/22	0/1/1/1
8	MAN	D	311	8	-	0/2/19/22	0/1/1/1
4	GOL	H	301	-	-	0/4/4/4	0/0/0/0
4	GOL	H	302	-	-	0/4/4/4	0/0/0/0
5	IPA	H	303	-	-	0/0/0/0	0/0/0/0
5	IPA	H	304	-	-	0/0/0/0	0/0/0/0
5	IPA	H	305	-	-	0/0/0/0	0/0/0/0
4	GOL	L	301	-	-	0/4/4/4	0/0/0/0
4	GOL	L	302	-	-	0/4/4/4	0/0/0/0
5	IPA	L	303	-	-	0/0/0/0	0/0/0/0

There are no bond length outliers.

All (18) bond angle outliers are listed below:

Mol	Chain	Res	Type	Atoms	Z	Observed(°)	Ideal(°)
6	C	303	NAG	O5-C1-C2	-3.01	107.28	111.47
6	D	303	NAG	O4-C4-C3	-2.08	105.82	110.36
6	D	303	NAG	C1-C2-N2	2.01	113.92	110.49
8	C	307	MAN	C1-O5-C5	2.15	115.12	112.17
6	C	301	NAG	C1-C2-N2	2.18	114.22	110.49
6	C	303	NAG	C1-C2-N2	2.21	114.27	110.49
7	D	305	BMA	C1-C2-C3	2.37	112.65	109.65
8	D	309	MAN	C1-O5-C5	2.41	115.49	112.17

Continued on next page...

Continued from previous page...

Mol	Chain	Res	Type	Atoms	Z	Observed(°)	Ideal(°)
8	C	305	MAN	C3-C4-C5	2.46	114.56	110.22
6	D	301	NAG	C1-O5-C5	2.59	115.74	112.17
6	C	303	NAG	C1-O5-C5	2.62	115.78	112.17
7	D	305	BMA	C1-O5-C5	2.66	115.84	112.17
8	C	306	MAN	C1-O5-C5	2.82	116.05	112.17
8	C	305	MAN	C1-O5-C5	3.05	116.37	112.17
8	D	307	MAN	C1-O5-C5	3.49	116.97	112.17
6	D	302	NAG	C1-O5-C5	4.65	118.57	112.17
8	D	306	MAN	C1-O5-C5	4.91	118.94	112.17
6	C	301	NAG	C1-O5-C5	5.57	119.84	112.17

There are no chirality outliers.

There are no torsion outliers.

There are no ring outliers.

1 monomer is involved in 1 short contact:

Mol	Chain	Res	Type	Clashes	Symm-Clashes
6	C	303	NAG	1	0

5.7 Other polymers [i](#)

There are no such residues in this entry.

5.8 Polymer linkage issues [i](#)

There are no chain breaks in this entry.

6 Fit of model and data ⓘ

6.1 Protein, DNA and RNA chains ⓘ

In the following table, the column labelled ‘#RSRZ> 2’ contains the number (and percentage) of RSRZ outliers, followed by percent RSRZ outliers for the chain as percentile scores relative to all X-ray entries and entries of similar resolution. The OWAB column contains the minimum, median, 95th percentile and maximum values of the occupancy-weighted average B-factor per residue. The column labelled ‘Q< 0.9’ lists the number of (and percentage) of residues with an average occupancy less than 0.9.

Mol	Chain	Analysed	<RSRZ>	#RSRZ>2		OWAB(Å ²)	Q<0.9
1	A	215/231 (93%)	-0.09	0	100 100	21, 30, 45, 64	0
1	H	215/231 (93%)	-0.06	0	100 100	19, 28, 45, 67	0
2	B	218/221 (98%)	-0.08	3 (1%)	75 76	21, 30, 48, 79	0
2	L	219/221 (99%)	0.01	2 (0%)	84 84	19, 29, 45, 74	0
3	C	142/156 (91%)	0.47	14 (9%)	8 8	29, 52, 72, 87	0
3	D	142/156 (91%)	0.45	13 (9%)	10 9	27, 46, 70, 87	0
All	All	1151/1216 (94%)	0.07	32 (2%)	53 52	19, 32, 61, 87	0

All (32) RSRZ outliers are listed below:

Mol	Chain	Res	Type	RSRZ
3	D	88	LEU	4.9
3	D	201	ARG	4.6
3	C	202	GLU	4.1
2	L	-1	THR	3.9
3	D	228	LEU	3.8
3	D	198	HIS	3.6
3	C	122	TYR	3.4
3	D	183	GLY	3.3
3	C	198	HIS	3.0
3	C	88	LEU	2.9
3	C	201	ARG	2.9
3	C	204	PRO	2.9
3	D	202	GLU	2.8
3	C	96	LYS	2.8
3	C	224	LEU	2.7
3	D	229	ASP	2.7
3	D	122	TYR	2.7
3	D	184	VAL	2.7
3	D	197	HIS	2.6

Continued on next page...

Continued from previous page...

Mol	Chain	Res	Type	RSRZ
3	D	90	LEU	2.5
2	L	212	ASN	2.4
3	C	157	HIS	2.4
3	C	184	VAL	2.4
2	B	213	GLU	2.4
2	B	202	THR	2.4
3	D	95	ASN	2.3
2	B	212	ASN	2.2
3	C	203	TYR	2.1
3	C	183	GLY	2.1
3	C	90	LEU	2.1
3	C	197	HIS	2.1
3	D	203	TYR	2.0

6.2 Non-standard residues in protein, DNA, RNA chains [i](#)

There are no non-standard protein/DNA/RNA residues in this entry.

6.3 Carbohydrates [i](#)

There are no carbohydrates in this entry.

6.4 Ligands [i](#)

In the following table, the Atoms column lists the number of modelled atoms in the group and the number defined in the chemical component dictionary. LLDF column lists the quality of electron density of the group with respect to its neighbouring residues in protein, DNA or RNA chains. The B-factors column lists the minimum, median, 95th percentile and maximum values of B factors of atoms in the group. The column labelled 'Q< 0.9' lists the number of atoms with occupancy less than 0.9.

Mol	Type	Chain	Res	Atoms	RSCC	RSR	LLDF	B-factors(Å ²)	Q<0.9
5	IPA	A	305	4/4	0.85	0.21	31.80	54,54,54,55	0
5	IPA	H	305	4/4	0.91	0.26	18.78	50,51,52,52	0
8	MAN	D	308	11/12	0.67	0.23	13.69	73,74,77,77	0
8	MAN	D	307	11/12	0.69	0.27	11.41	70,73,77,78	0
4	GOL	C	308	6/6	0.93	0.17	6.81	41,42,43,44	0
4	GOL	A	302	6/6	0.83	0.18	6.27	49,53,53,53	0
6	NAG	D	301	14/15	0.88	0.20	5.28	54,57,60,62	0
4	GOL	B	301	6/6	0.84	0.17	5.08	53,54,54,56	0

Continued on next page...

Continued from previous page...

Mol	Type	Chain	Res	Atoms	RSCC	RSR	LLDF	B-factors(\AA^2)	Q<0.9
4	GOL	H	301	6/6	0.70	0.30	4.87	46,54,55,58	0
4	GOL	B	303	6/6	0.66	0.20	4.54	59,60,61,61	0
4	GOL	H	302	6/6	0.88	0.21	4.53	58,61,63,63	0
4	GOL	B	302	6/6	0.73	0.16	4.12	47,50,51,54	0
4	GOL	L	301	6/6	0.85	0.17	3.72	50,52,53,54	0
4	GOL	L	302	6/6	0.80	0.22	3.55	53,55,56,57	0
4	GOL	A	303	6/6	0.84	0.16	2.19	60,62,63,64	0
4	GOL	A	301	6/6	0.85	0.20	1.89	44,49,50,50	0
5	IPA	H	303	4/4	0.83	0.15	1.30	60,61,61,61	0
5	IPA	A	304	4/4	0.86	0.12	0.47	52,55,55,55	0
6	NAG	D	303	14/15	0.89	0.13	0.08	43,44,49,49	0
6	NAG	C	302	14/15	0.93	0.10	-0.58	47,49,53,55	0
6	NAG	C	301	14/15	0.86	0.19	-	62,64,69,71	0
8	MAN	D	309	11/12	0.73	0.19	-	70,71,75,78	0
8	MAN	C	305	11/12	0.64	0.21	-	88,91,95,95	0
6	NAG	D	302	14/15	0.94	0.12	-	45,47,52,52	0
8	MAN	D	306	11/12	0.69	0.20	-	68,71,72,75	0
7	BMA	D	305	11/12	0.89	0.13	-	60,63,66,68	0
6	NAG	D	304	14/15	0.87	0.13	-	52,53,55,57	0
8	MAN	D	311	11/12	0.67	0.35	-	78,80,83,86	0
5	IPA	L	303	4/4	0.79	0.15	-	69,70,70,70	0
8	MAN	D	310	11/12	0.61	0.24	-	74,80,83,84	0
5	IPA	H	304	4/4	0.57	0.28	-	69,69,70,70	0
6	NAG	C	303	14/15	0.80	0.20	-	60,62,69,72	0
8	MAN	C	307	11/12	0.79	0.27	-	90,92,96,99	0
8	MAN	C	306	11/12	0.69	0.30	-	93,97,102,105	0
7	BMA	C	304	11/12	0.74	0.23	-	77,82,87,88	0

6.5 Other polymers [i](#)

There are no such residues in this entry.