



Full wwPDB X-ray Structure Validation Report ⓘ

Feb 14, 2017 – 02:27 am GMT

PDB ID : 1NVB
Title : Crystal structure of 3-dehydroquinase synthase (DHQS) in complex with
ZN²⁺ and carbaphosphonate
Authors : Nichols, C.E.; Ren, J.; Lamb, H.K.; Hawkins, A.R.; Stammers, D.K.
Deposited on : 2003-02-03
Resolution : 2.70 Å(reported)

This is a Full wwPDB X-ray Structure Validation Report for a publicly released PDB entry.

We welcome your comments at validation@mail.wwpdb.org

A user guide is available at

<http://wwpdb.org/validation/2016/XrayValidationReportHelp>

with specific help available everywhere you see the ⓘ symbol.

The following versions of software and data (see [references ⓘ](#)) were used in the production of this report:

MolProbity : 4.02b-467
Mogul : 1.7.2 (RC1), CSD as538be (2017)
Xtriage (Phenix) : 1.9-1692
EDS : trunk28620
Percentile statistics : 20161228.v01 (using entries in the PDB archive December 28th 2016)
Refmac : 5.8.0135
CCP4 : 6.5.0
Ideal geometry (proteins) : Engh & Huber (2001)
Ideal geometry (DNA, RNA) : Parkinson et al. (1996)
Validation Pipeline (wwPDB-VP) : recalc28949

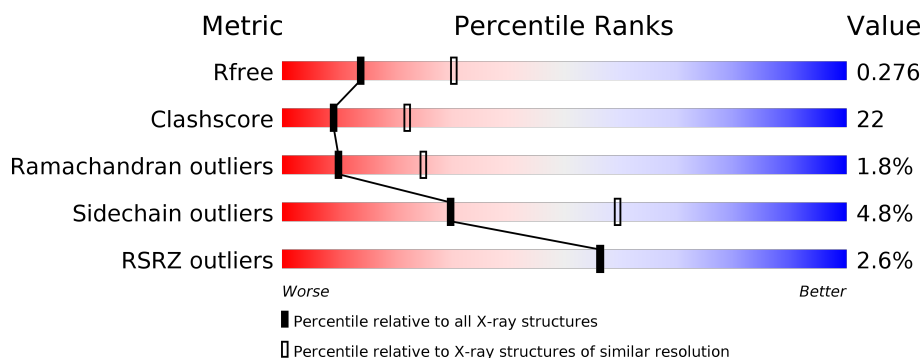
1 Overall quality at a glance

The following experimental techniques were used to determine the structure:

X-RAY DIFFRACTION

The reported resolution of this entry is 2.70 Å.

Percentile scores (ranging between 0-100) for global validation metrics of the entry are shown in the following graphic. The table shows the number of entries on which the scores are based.



Metric	Whole archive (#Entries)	Similar resolution (#Entries, resolution range(Å))
R_{free}	100719	2259 (2.70-2.70)
Clashscore	112137	2590 (2.70-2.70)
Ramachandran outliers	110173	2550 (2.70-2.70)
Sidechain outliers	110143	2550 (2.70-2.70)
RSRZ outliers	101464	2275 (2.70-2.70)

The table below summarises the geometric issues observed across the polymeric chains and their fit to the electron density. The red, orange, yellow and green segments on the lower bar indicate the fraction of residues that contain outliers for ≥ 3 , 2, 1 and 0 types of geometric quality criteria. A grey segment represents the fraction of residues that are not modelled. The numeric value for each fraction is indicated below the corresponding segment, with a dot representing fractions $\leq 5\%$. The upper red bar (where present) indicates the fraction of residues that have poor fit to the electron density. The numeric value is given above the bar.

Mol	Chain	Length	Quality of chain
1	A	393	<div> <div>2%</div> <div> <div></div> <div>61%</div> <div>35%</div> <div>••</div> </div> </div>
1	B	393	<div> <div>3%</div> <div> <div></div> <div>61%</div> <div>36%</div> <div>••</div> </div> </div>

The following table lists non-polymeric compounds, carbohydrate monomers and non-standard residues in protein, DNA, RNA chains that are outliers for geometric or electron-density-fit criteria:

Mol	Type	Chain	Res	Chirality	Geometry	Clashes	Electron density
2	ZN	A	600	-	-	-	X

2 Entry composition

There are 6 unique types of molecules in this entry. The entry contains 6284 atoms, of which 0 are hydrogens and 0 are deuteriums.

In the tables below, the ZeroOcc column contains the number of atoms modelled with zero occupancy, the AltConf column contains the number of residues with at least one atom in alternate conformation and the Trace column contains the number of residues modelled with at most 2 atoms.

- Molecule 1 is a protein called 3-DEHYDROQUINATE SYNTHASE.

Mol	Chain	Residues	Atoms					ZeroOcc	AltConf	Trace
1	A	390	Total	C	N	O	S	0	0	0
			2992	1897	522	561	12			
1	B	391	Total	C	N	O	S	0	0	0
			3001	1902	523	564	12			

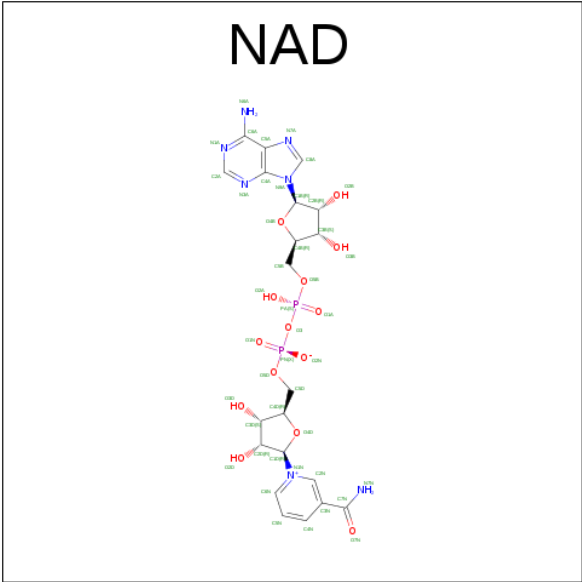
- Molecule 2 is ZINC ION (three-letter code: ZN) (formula: Zn).

Mol	Chain	Residues	Atoms		ZeroOcc	AltConf
2	B	1	Total	Zn	0	0
			1	1		
2	A	1	Total	Zn	0	0
			1	1		

- Molecule 3 is CHLORIDE ION (three-letter code: CL) (formula: Cl).

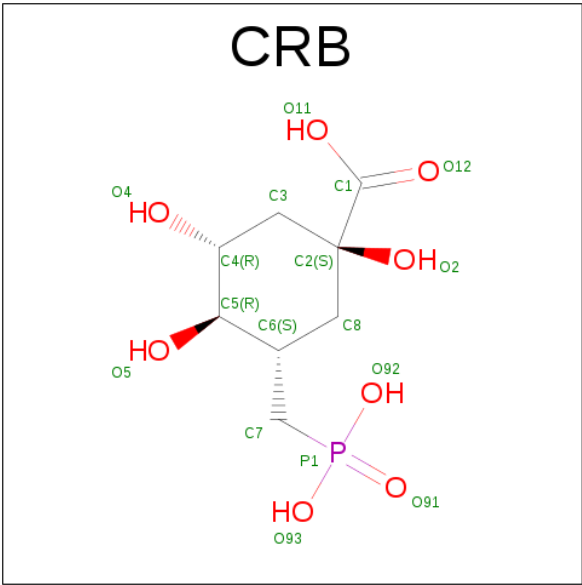
Mol	Chain	Residues	Atoms		ZeroOcc	AltConf
3	A	2	Total	Cl	0	0
			2	2		

- Molecule 4 is NICOTINAMIDE-ADENINE-DINUCLEOTIDE (three-letter code: NAD) (formula: C₂₁H₂₇N₇O₁₄P₂).



Mol	Chain	Residues	Atoms				ZeroOcc	AltConf
4	A	1	Total	C	N	O	P	0
			44	21	7	14	2	

- Molecule 5 is [1R-(1ALPHA,3BETA,4ALPHA,5BETA)]-5-(PHOSPHONOMETHYL)-1,3,4-TRIHYDROXYCYCLOHEXANE-1-CARBOXYLIC ACID (three-letter code: CRB) (formula: C₈H₁₅O₈P).



Mol	Chain	Residues	Atoms				ZeroOcc	AltConf
5	A	1	Total	C	O	P	0	0
			17	8	8	1		
5	B	1	Total	C	O	P	0	0
			17	8	8	1		

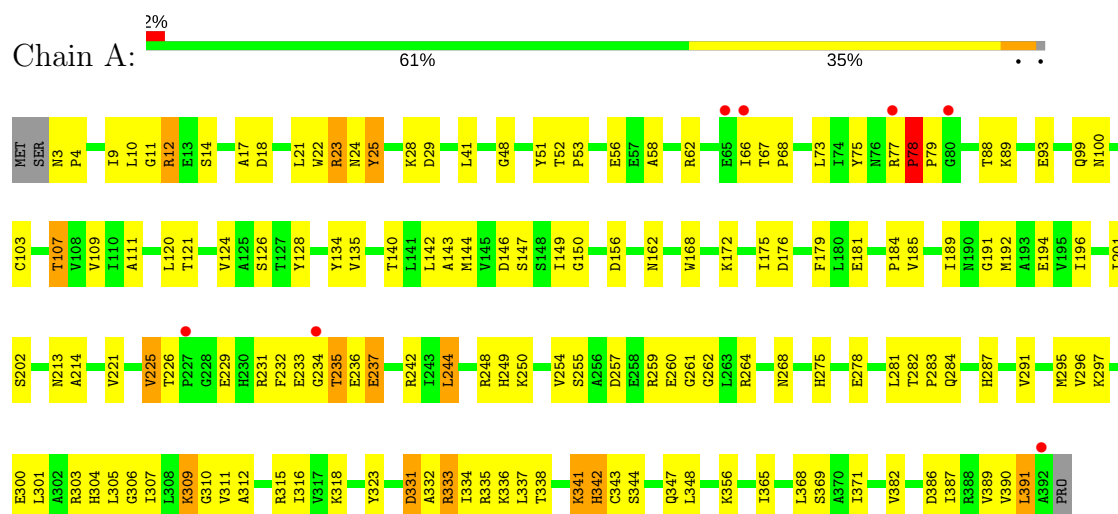
- Molecule 6 is water.

Mol	Chain	Residues	Atoms		ZeroOcc	AltConf
6	A	116	Total 116	O 116	0	0
6	B	93	Total 93	O 93	0	0

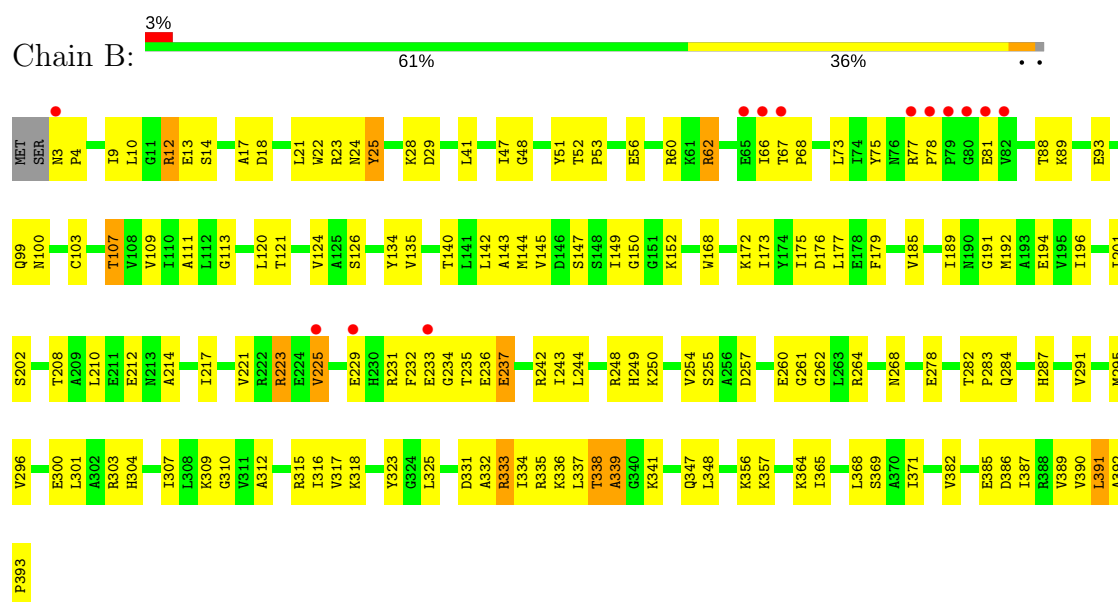
3 Residue-property plots

These plots are drawn for all protein, RNA and DNA chains in the entry. The first graphic for a chain summarises the proportions of the various outlier classes displayed in the second graphic. The second graphic shows the sequence view annotated by issues in geometry and electron density. Residues are color-coded according to the number of geometric quality criteria for which they contain at least one outlier: green = 0, yellow = 1, orange = 2 and red = 3 or more. A red dot above a residue indicates a poor fit to the electron density ($RSRZ > 2$). Stretches of 2 or more consecutive residues without any outlier are shown as a green connector. Residues present in the sample, but not in the model, are shown in grey.

• Molecule 1: 3-DEHYDROQUINATE SYNTHASE



• Molecule 1: 3-DEHYDROQUINATE SYNTHASE



4 Data and refinement statistics

Property	Value	Source
Space group	P 21 21 2	Depositor
Cell constants a, b, c, α , β , γ	131.55Å 84.19Å 73.74Å 90.00° 90.00° 90.00°	Depositor
Resolution (Å)	30.00 – 2.70 28.29 – 2.70	Depositor EDS
% Data completeness (in resolution range)	95.3 (30.00-2.70) 95.4 (28.29-2.70)	Depositor EDS
R_{merge}	0.18	Depositor
R_{sym}	(Not available)	Depositor
$\langle I/\sigma(I) \rangle$ ¹	2.76 (at 2.72Å)	Xtriage
Refinement program	CNS 1.1	Depositor
R, R_{free}	0.216 , 0.272 0.228 , 0.276	Depositor DCC
R_{free} test set	1740 reflections (7.89%)	DCC
Wilson B-factor (Å ²)	19.2	Xtriage
Anisotropy	0.498	Xtriage
Bulk solvent k_{sol} (e/Å ³), B_{sol} (Å ²)	0.34 , 52.7	EDS
L-test for twinning ²	$\langle L \rangle = 0.37$, $\langle L^2 \rangle = 0.19$	Xtriage
Estimated twinning fraction	No twinning to report.	Xtriage
F_o, F_c correlation	0.87	EDS
Total number of atoms	6284	wwPDB-VP
Average B, all atoms (Å ²)	20.0	wwPDB-VP

Xtriage's analysis on translational NCS is as follows: *The largest off-origin peak in the Patterson function is 4.52% of the height of the origin peak. No significant pseudotranslation is detected.*

¹Intensities estimated from amplitudes.

²Theoretical values of $\langle |L| \rangle$, $\langle L^2 \rangle$ for acentric reflections are 0.5, 0.333 respectively for untwinned datasets, and 0.375, 0.2 for perfectly twinned datasets.

5 Model quality

5.1 Standard geometry

Bond lengths and bond angles in the following residue types are not validated in this section: CRB, ZN, NAD, CL

The Z score for a bond length (or angle) is the number of standard deviations the observed value is removed from the expected value. A bond length (or angle) with $|Z| > 5$ is considered an outlier worth inspection. RMSZ is the root-mean-square of all Z scores of the bond lengths (or angles).

Mol	Chain	Bond lengths		Bond angles	
		RMSZ	# Z >5	RMSZ	# Z >5
1	A	0.38	0/3042	0.64	0/4123
1	B	0.36	0/3052	0.62	0/4136
All	All	0.37	0/6094	0.63	0/8259

There are no bond length outliers.

There are no bond angle outliers.

There are no chirality outliers.

There are no planarity outliers.

5.2 Too-close contacts

In the following table, the Non-H and H(model) columns list the number of non-hydrogen atoms and hydrogen atoms in the chain respectively. The H(added) column lists the number of hydrogen atoms added and optimized by MolProbity. The Clashes column lists the number of clashes within the asymmetric unit, whereas Symm-Clashes lists symmetry related clashes.

Mol	Chain	Non-H	H(model)	H(added)	Clashes	Symm-Clashes
1	A	2992	0	3082	137	0
1	B	3001	0	3089	146	0
2	A	1	0	0	0	0
2	B	1	0	0	0	0
3	A	2	0	0	0	0
4	A	44	0	26	3	0
5	A	17	0	11	1	0
5	B	17	0	11	0	0
6	A	116	0	0	11	0
6	B	93	0	0	12	0
All	All	6284	0	6219	273	0

The all-atom clashscore is defined as the number of clashes found per 1000 atoms (including hydrogen atoms). The all-atom clashscore for this structure is 22.

All (273) close contacts within the same asymmetric unit are listed below, sorted by their clash magnitude.

Atom-1	Atom-2	Interatomic distance (Å)	Clash overlap (Å)
1:A:309:LYS:NZ	1:B:304:HIS:HA	1.54	1.22
1:A:338:THR:HG23	1:A:341:LYS:HB2	1.37	1.04
1:A:309:LYS:HZ1	1:B:304:HIS:HA	0.91	1.02
1:B:338:THR:HG23	1:B:341:LYS:HB2	1.37	1.02
1:B:387:ILE:O	1:B:391:LEU:HD12	1.61	1.00
1:A:387:ILE:O	1:A:391:LEU:HD12	1.62	0.98
1:A:311:VAL:HG23	6:A:610:HOH:O	1.73	0.87
1:A:287:HIS:O	1:A:291:VAL:HG23	1.83	0.80
1:A:338:THR:O	1:A:338:THR:HG22	1.84	0.77
1:B:287:HIS:O	1:B:291:VAL:HG23	1.86	0.76
1:A:237:GLU:H	1:A:237:GLU:CD	1.89	0.75
1:A:333:ARG:HA	1:A:336:LYS:HG2	1.67	0.75
1:B:331:ASP:HB3	1:B:334:ILE:HG12	1.70	0.74
1:A:58:ALA:O	1:A:62:ARG:HG2	1.86	0.73
1:B:28:LYS:HD2	1:B:62:ARG:NH2	2.04	0.73
1:A:201:ILE:HG22	1:A:368:LEU:HD21	1.71	0.72
1:B:331:ASP:HB3	1:B:334:ILE:CG1	2.20	0.72
1:B:13:GLU:HG3	6:B:671:HOH:O	1.92	0.70
1:A:232:PHE:O	1:A:236:GLU:HG3	1.91	0.70
6:A:607:HOH:O	1:B:318:LYS:HD3	1.92	0.70
1:A:332:ALA:O	1:A:335:ARG:HB2	1.92	0.69
1:B:303:ARG:HD2	1:B:310:GLY:HA2	1.74	0.69
1:B:201:ILE:HG22	1:B:368:LEU:HD21	1.74	0.69
1:B:28:LYS:HD2	1:B:62:ARG:HH22	1.58	0.68
1:A:315:ARG:HD3	1:A:371:ILE:HD12	1.76	0.68
1:A:309:LYS:NZ	1:B:304:HIS:CA	2.46	0.68
1:B:244:LEU:HB3	1:B:248:ARG:NH1	2.10	0.66
1:B:334:ILE:O	1:B:338:THR:HB	1.95	0.66
1:B:77:ARG:HH22	1:B:88:THR:HA	1.60	0.66
1:B:312:ALA:O	1:B:316:ILE:HG12	1.97	0.65
1:B:315:ARG:HD3	1:B:371:ILE:HD12	1.78	0.65
1:B:386:ASP:O	1:B:389:VAL:HG22	1.96	0.65
1:A:11:GLY:O	1:A:12:ARG:HB2	1.95	0.65
1:A:143:ALA:HA	1:A:147:SER:OG	1.96	0.65
1:A:303:ARG:HD2	1:A:310:GLY:HA2	1.79	0.65
1:A:135:VAL:HG12	1:A:172:LYS:HB2	1.79	0.65
1:A:386:ASP:O	1:A:389:VAL:HG22	1.96	0.64

Continued on next page...

Continued from previous page...

Atom-1	Atom-2	Interatomic distance (Å)	Clash overlap (Å)
1:B:278:GLU:O	1:B:282:THR:HG22	1.97	0.64
1:B:189:ILE:HG13	1:B:323:TYR:O	1.98	0.64
1:A:278:GLU:O	1:A:282:THR:HG22	1.98	0.64
1:A:28:LYS:HD2	1:A:62:ARG:HH22	1.61	0.63
1:A:28:LYS:HD2	1:A:62:ARG:NH2	2.13	0.63
1:A:312:ALA:O	1:A:316:ILE:HG12	1.98	0.63
1:B:135:VAL:HG12	1:B:172:LYS:HB2	1.81	0.63
1:B:232:PHE:HB2	6:B:614:HOH:O	1.99	0.62
1:B:332:ALA:O	1:B:335:ARG:HB2	1.99	0.62
1:A:338:THR:CG2	1:A:341:LYS:HB2	2.24	0.61
1:B:120:LEU:O	1:B:124:VAL:HG23	2.00	0.60
1:B:143:ALA:HA	1:B:147:SER:OG	2.01	0.60
1:B:333:ARG:HA	1:B:336:LYS:HG2	1.82	0.60
1:B:3:ASN:N	1:B:4:PRO:HA	2.15	0.60
1:A:309:LYS:HZ1	1:B:304:HIS:CA	1.87	0.60
1:B:389:VAL:HB	6:B:644:HOH:O	2.01	0.60
1:A:225:VAL:HG21	1:A:231:ARG:HA	1.83	0.60
1:A:142:LEU:O	1:A:142:LEU:HD23	2.03	0.59
1:A:120:LEU:O	1:A:124:VAL:HG23	2.02	0.59
1:A:335:ARG:HA	1:A:335:ARG:HH11	1.66	0.59
1:A:235:THR:OG1	1:A:235:THR:O	2.12	0.59
1:B:338:THR:CG2	1:B:338:THR:O	2.50	0.59
1:B:89:LYS:O	1:B:93:GLU:HG3	2.03	0.58
1:A:78:PRO:HD3	6:A:696:HOH:O	2.03	0.58
1:A:301:LEU:HA	1:A:390:VAL:HG11	1.85	0.58
1:A:318:LYS:HB2	6:A:613:HOH:O	2.03	0.58
1:B:10:LEU:HD23	1:B:255:SER:HA	1.86	0.58
1:A:78:PRO:HD3	6:A:636:HOH:O	2.03	0.57
1:B:140:THR:O	1:B:144:MET:HG3	2.04	0.57
1:A:89:LYS:O	1:A:93:GLU:HG3	2.04	0.57
1:A:66:ILE:HG22	1:A:67:THR:N	2.19	0.57
1:B:223:ARG:NH2	1:B:229:GLU:OE1	2.38	0.57
1:B:301:LEU:HA	1:B:390:VAL:HG11	1.86	0.57
1:A:77:ARG:HH22	1:A:88:THR:HA	1.69	0.57
1:B:393:PRO:HG3	6:B:629:HOH:O	2.04	0.57
1:B:237:GLU:CD	1:B:237:GLU:H	2.07	0.56
1:B:66:ILE:HG22	1:B:67:THR:N	2.20	0.56
1:A:146:ASP:OD2	4:A:400:NAD:H5N	2.07	0.55
1:B:89:LYS:HG3	1:B:124:VAL:HG22	1.88	0.55
1:B:348:LEU:HD13	1:B:391:LEU:CD2	2.37	0.55
1:A:3:ASN:ND2	1:A:4:PRO:HD2	2.22	0.55

Continued on next page...

Continued from previous page...

Atom-1	Atom-2	Interatomic distance (Å)	Clash overlap (Å)
1:A:309:LYS:HE2	1:B:303:ARG:C	2.26	0.55
1:B:217:ILE:O	1:B:221:VAL:HG23	2.06	0.55
1:B:77:ARG:NH2	1:B:88:THR:HA	2.21	0.55
1:A:150:GLY:HA2	1:A:254:VAL:HG21	1.88	0.55
1:A:233:GLU:O	1:A:235:THR:N	2.37	0.54
1:B:389:VAL:HG23	1:B:390:VAL:N	2.22	0.54
1:A:309:LYS:HZ3	1:B:304:HIS:HA	1.63	0.54
1:A:89:LYS:HG3	1:A:124:VAL:HG22	1.89	0.54
1:A:135:VAL:CG1	1:A:172:LYS:HB2	2.38	0.54
1:B:233:GLU:O	1:B:235:THR:N	2.36	0.54
1:B:28:LYS:CD	1:B:62:ARG:NH2	2.70	0.54
1:B:3:ASN:HB3	6:B:617:HOH:O	2.07	0.54
1:A:236:GLU:HB2	6:A:654:HOH:O	2.06	0.53
1:A:333:ARG:O	1:A:337:LEU:HG	2.08	0.53
1:B:142:LEU:HG	1:B:194:GLU:HG3	1.90	0.53
1:B:232:PHE:O	1:B:236:GLU:HG3	2.09	0.53
1:B:75:TYR:OH	1:B:77:ARG:HD2	2.08	0.53
1:B:56:GLU:O	1:B:60:ARG:HG3	2.08	0.53
1:B:142:LEU:O	1:B:142:LEU:HD23	2.09	0.53
1:B:3:ASN:N	1:B:4:PRO:CA	2.71	0.53
1:B:135:VAL:CG1	1:B:172:LYS:HB2	2.40	0.52
1:A:348:LEU:HD13	1:A:391:LEU:CD2	2.38	0.52
1:A:41:LEU:C	1:A:41:LEU:HD23	2.29	0.52
1:A:254:VAL:HG22	1:A:264:ARG:NH1	2.24	0.52
1:A:142:LEU:HG	1:A:194:GLU:HG3	1.91	0.52
1:B:28:LYS:HG3	1:B:62:ARG:NH2	2.24	0.52
1:A:111:ALA:HB2	1:A:121:THR:HG21	1.91	0.52
1:A:226:THR:OG1	1:A:229:GLU:HG2	2.10	0.52
1:A:28:LYS:HG3	1:A:62:ARG:NH2	2.25	0.52
1:A:225:VAL:CG2	1:A:231:ARG:HA	2.39	0.51
1:A:244:LEU:HB3	1:A:248:ARG:NH1	2.24	0.51
1:A:140:THR:O	1:A:144:MET:HG3	2.09	0.51
1:A:147:SER:HA	4:A:400:NAD:C4N	2.41	0.51
1:B:41:LEU:HD23	1:B:41:LEU:C	2.31	0.51
1:A:10:LEU:HD23	1:A:255:SER:HA	1.92	0.51
1:A:307:ILE:HG22	1:A:369:SER:HA	1.91	0.51
1:A:126:SER:HB3	1:A:168:TRP:HB2	1.93	0.51
1:B:254:VAL:HG22	1:B:264:ARG:NH1	2.25	0.51
1:B:307:ILE:HG22	1:B:369:SER:HA	1.92	0.51
1:B:111:ALA:HB2	1:B:121:THR:HG21	1.91	0.51
1:A:389:VAL:HG23	1:A:390:VAL:N	2.25	0.50

Continued on next page...

Continued from previous page...

Atom-1	Atom-2	Interatomic distance (Å)	Clash overlap (Å)
1:B:29:ASP:OD2	1:B:172:LYS:HE3	2.11	0.50
1:B:142:LEU:HB2	1:B:191:GLY:HA2	1.93	0.50
1:B:77:ARG:NH2	1:B:88:THR:HG23	2.27	0.50
1:A:334:ILE:O	1:A:338:THR:HB	2.12	0.50
1:A:305:LEU:O	1:B:317:VAL:HG11	2.12	0.49
1:A:77:ARG:NH2	1:A:88:THR:HA	2.27	0.49
1:B:150:GLY:HA2	1:B:254:VAL:HG21	1.93	0.49
1:B:225:VAL:HG21	1:B:231:ARG:HA	1.93	0.49
1:A:17:ALA:HB2	1:A:175:ILE:HB	1.94	0.49
1:B:52:THR:O	1:B:56:GLU:HG3	2.12	0.49
1:B:73:LEU:HD13	1:B:99:GLN:HG3	1.93	0.49
1:A:184:PRO:HD3	4:A:400:NAD:C2A	2.43	0.49
1:A:17:ALA:O	1:A:18:ASP:HB2	2.13	0.49
1:A:22:TRP:NE1	1:A:51:TYR:HB3	2.28	0.49
1:A:342:HIS:HE1	1:A:344:SER:HB3	1.78	0.49
1:B:17:ALA:HB2	1:B:175:ILE:HB	1.93	0.49
1:B:77:ARG:CZ	1:B:88:THR:HG23	2.43	0.49
1:A:315:ARG:HD3	1:A:371:ILE:CD1	2.43	0.48
1:B:12:ARG:NH1	6:B:642:HOH:O	2.44	0.48
1:A:175:ILE:HG22	1:A:175:ILE:O	2.13	0.48
1:A:142:LEU:HB2	1:A:191:GLY:HA2	1.94	0.48
1:B:145:VAL:HG12	1:B:243:ILE:HG23	1.94	0.48
1:A:296:VAL:O	1:A:300:GLU:HG3	2.14	0.48
1:A:28:LYS:CD	1:A:62:ARG:NH2	2.76	0.48
1:A:75:TYR:OH	1:A:77:ARG:CD	2.61	0.48
1:A:73:LEU:HD13	1:A:99:GLN:HG3	1.95	0.48
1:B:52:THR:N	1:B:53:PRO:CD	2.76	0.48
1:B:81:GLU:HG3	1:B:81:GLU:O	2.14	0.48
1:A:109:VAL:HG11	1:A:121:THR:HG23	1.96	0.48
1:B:126:SER:HB3	1:B:168:TRP:HB2	1.95	0.48
1:A:309:LYS:HE2	1:B:303:ARG:HG2	1.96	0.48
1:A:304:HIS:CE1	1:A:389:VAL:HG21	2.48	0.47
1:B:296:VAL:O	1:B:300:GLU:HG3	2.13	0.47
1:B:185:VAL:HG23	6:B:640:HOH:O	2.14	0.47
1:A:52:THR:N	1:A:53:PRO:CD	2.77	0.47
1:B:22:TRP:NE1	1:B:51:TYR:HB3	2.30	0.47
1:B:75:TYR:CE1	1:B:77:ARG:HG3	2.50	0.47
1:B:17:ALA:O	1:B:18:ASP:HB2	2.15	0.47
1:A:22:TRP:HE1	1:A:51:TYR:HB3	1.80	0.46
1:B:109:VAL:HG11	1:B:121:THR:HG23	1.96	0.46
1:A:185:VAL:HG13	1:A:221:VAL:HG12	1.98	0.46

Continued on next page...

Continued from previous page...

Atom-1	Atom-2	Interatomic distance (Å)	Clash overlap (Å)
1:A:9:ILE:HD11	1:A:254:VAL:HG11	1.98	0.46
1:B:338:THR:HG23	1:B:341:LYS:CB	2.27	0.46
1:A:29:ASP:OD2	1:A:172:LYS:HE3	2.15	0.46
1:A:48:GLY:HA2	1:A:52:THR:HG23	1.96	0.46
1:B:221:VAL:HA	1:B:231:ARG:HH21	1.81	0.46
1:B:48:GLY:HA2	1:B:52:THR:HG23	1.97	0.46
1:A:291:VAL:O	1:A:295:MET:HG3	2.15	0.46
1:B:22:TRP:HE1	1:B:51:TYR:HB3	1.81	0.46
1:B:189:ILE:O	1:B:325:LEU:HD21	2.14	0.46
1:B:109:VAL:O	1:B:134:TYR:HA	2.15	0.46
1:B:225:VAL:CG2	1:B:231:ARG:HA	2.45	0.46
1:B:67:THR:HA	1:B:68:PRO:C	2.36	0.46
1:A:109:VAL:O	1:A:134:TYR:HA	2.15	0.46
1:B:338:THR:O	1:B:338:THR:HG23	2.15	0.46
1:A:156:ASP:OD1	1:A:162:ASN:N	2.41	0.46
1:B:315:ARG:HD3	1:B:371:ILE:CD1	2.46	0.46
1:A:3:ASN:HA	6:A:658:HOH:O	2.16	0.45
1:A:181:GLU:O	1:A:231:ARG:HD3	2.16	0.45
1:A:66:ILE:CG2	1:A:67:THR:N	2.79	0.45
1:B:244:LEU:HB3	1:B:248:ARG:HH12	1.81	0.45
1:A:52:THR:O	1:A:56:GLU:HG3	2.16	0.45
1:A:306:GLY:HA3	1:B:317:VAL:HG21	1.98	0.45
1:B:175:ILE:O	1:B:175:ILE:HG22	2.16	0.45
1:B:9:ILE:HD11	1:B:254:VAL:HG11	1.98	0.45
1:A:257:ASP:OD2	1:A:260:GLU:HA	2.16	0.45
1:B:177:LEU:CD2	1:B:243:ILE:HD12	2.47	0.45
1:B:24:ASN:O	1:B:25:TYR:HB2	2.17	0.45
1:A:336:LYS:HG3	1:A:337:LEU:HD23	1.99	0.45
1:B:28:LYS:HG3	1:B:62:ARG:CZ	2.47	0.45
1:B:66:ILE:CG2	1:B:67:THR:N	2.80	0.45
1:B:307:ILE:HD12	1:B:307:ILE:N	2.32	0.44
1:A:257:ASP:CG	1:A:261:GLY:H	2.20	0.44
1:A:244:LEU:HA	1:A:244:LEU:HD12	1.78	0.44
1:A:67:THR:HA	1:A:68:PRO:C	2.37	0.44
1:A:281:LEU:HD21	1:A:343:CYS:SG	2.58	0.44
1:B:62:ARG:HD3	6:B:692:HOH:O	2.17	0.44
1:A:225:VAL:HG21	1:A:231:ARG:CA	2.46	0.44
1:B:67:THR:HG22	6:B:663:HOH:O	2.17	0.44
1:B:176:ASP:HB3	1:B:179:PHE:CD2	2.53	0.44
1:B:338:THR:O	1:B:339:ALA:C	2.55	0.44
1:A:214:ALA:HA	1:A:323:TYR:CE1	2.53	0.44

Continued on next page...

Continued from previous page...

Atom-1	Atom-2	Interatomic distance (Å)	Clash overlap (Å)
1:A:189:ILE:O	1:A:192:MET:HB2	2.17	0.43
1:B:189:ILE:O	1:B:192:MET:HB2	2.17	0.43
1:B:304:HIS:CE1	1:B:389:VAL:HG21	2.52	0.43
1:B:335:ARG:HA	1:B:335:ARG:HH11	1.82	0.43
1:A:103:CYS:HB3	1:A:107:THR:OG1	2.17	0.43
1:A:23:ARG:HA	6:A:659:HOH:O	2.17	0.43
1:B:257:ASP:CG	1:B:261:GLY:H	2.22	0.43
1:B:283:PRO:HD2	1:B:284:GLN:HE22	1.83	0.43
1:A:259:ARG:NH1	6:A:665:HOH:O	2.29	0.43
1:B:257:ASP:OD2	1:B:260:GLU:HA	2.17	0.43
1:B:333:ARG:O	1:B:337:LEU:HG	2.17	0.43
1:A:176:ASP:HB3	1:A:179:PHE:CD2	2.52	0.43
1:A:260:GLU:HA	1:A:264:ARG:HB3	2.00	0.43
1:B:152:LYS:HG3	1:B:264:ARG:NH2	2.33	0.43
1:A:52:THR:OG1	1:A:53:PRO:HD3	2.18	0.43
1:B:389:VAL:CG2	1:B:390:VAL:N	2.82	0.43
1:B:28:LYS:NZ	6:B:667:HOH:O	2.51	0.43
1:B:301:LEU:HB2	1:B:390:VAL:HG21	1.99	0.43
1:B:331:ASP:CB	1:B:334:ILE:HG12	2.43	0.43
1:A:237:GLU:N	1:A:237:GLU:CD	2.65	0.43
1:A:307:ILE:CG2	1:A:369:SER:HA	2.49	0.43
1:B:17:ALA:CB	1:B:175:ILE:HB	2.48	0.43
1:B:192:MET:O	1:B:196:ILE:HG13	2.19	0.43
1:B:202:SER:HB3	1:B:249:HIS:CD2	2.54	0.43
1:A:365:ILE:HD13	1:A:382:VAL:HB	2.01	0.43
1:B:10:LEU:CD2	1:B:255:SER:HA	2.47	0.43
1:A:213:ASN:HA	6:A:703:HOH:O	2.18	0.42
1:A:283:PRO:HD2	1:A:284:GLN:HE22	1.83	0.42
1:A:79:PRO:HD3	6:A:609:HOH:O	2.17	0.42
1:B:260:GLU:HA	1:B:264:ARG:HB3	2.01	0.42
1:A:214:ALA:HA	1:A:323:TYR:CZ	2.55	0.42
1:B:357:LYS:O	1:B:364:LYS:HD3	2.19	0.42
1:B:365:ILE:HD13	1:B:382:VAL:HB	2.02	0.42
1:A:192:MET:O	1:A:196:ILE:HG13	2.19	0.42
1:B:68:PRO:HG2	6:B:636:HOH:O	2.18	0.42
1:A:73:LEU:CD1	1:A:99:GLN:HG3	2.49	0.42
1:A:309:LYS:CD	1:B:303:ARG:HD3	2.50	0.42
1:A:301:LEU:HB2	1:A:390:VAL:HG21	2.02	0.42
1:B:189:ILE:HG22	1:B:325:LEU:HD23	2.02	0.42
1:B:291:VAL:O	1:B:295:MET:HG3	2.20	0.42
1:A:331:ASP:OD2	1:A:333:ARG:NH1	2.53	0.42

Continued on next page...

Continued from previous page...

Atom-1	Atom-2	Interatomic distance (Å)	Clash overlap (Å)
1:A:275:HIS:HE1	5:A:500:CRB:O93	2.02	0.42
1:A:297:LYS:HA	1:A:297:LYS:HD3	1.89	0.41
1:B:307:ILE:CG2	1:B:369:SER:HA	2.50	0.41
1:B:109:VAL:CG1	1:B:121:THR:HG23	2.51	0.41
1:B:214:ALA:HA	1:B:323:TYR:CZ	2.55	0.41
1:A:21:LEU:HD22	1:A:25:TYR:CD1	2.56	0.41
1:B:225:VAL:HG21	1:B:231:ARG:CA	2.50	0.41
1:B:47:ILE:HD13	1:B:113:GLY:HA2	2.02	0.41
1:A:17:ALA:CB	1:A:175:ILE:HB	2.50	0.41
1:B:173:ILE:HG22	1:B:175:ILE:HD12	2.03	0.41
1:B:392:ALA:HA	1:B:393:PRO:HD3	1.94	0.41
1:A:24:ASN:O	1:A:25:TYR:HB2	2.20	0.41
1:A:331:ASP:HB3	1:A:334:ILE:CG1	2.51	0.41
1:A:77:ARG:NH2	1:A:88:THR:HG23	2.36	0.41
1:B:208:THR:O	1:B:212:GLU:HG3	2.20	0.41
1:B:149:ILE:O	1:B:250:LYS:HE2	2.21	0.41
1:A:333:ARG:HH11	1:A:333:ARG:HG3	1.86	0.41
1:B:103:CYS:HB3	1:B:107:THR:OG1	2.20	0.41
1:B:210:LEU:CD2	1:B:242:ARG:HD3	2.51	0.41
1:A:242:ARG:NE	1:A:242:ARG:HA	2.36	0.41
1:B:21:LEU:HD22	1:B:25:TYR:CD1	2.56	0.41
1:A:124:VAL:O	1:A:128:TYR:HB2	2.22	0.40
1:A:307:ILE:HD12	1:A:307:ILE:N	2.36	0.40
1:B:233:GLU:O	1:B:235:THR:HG22	2.21	0.40
1:B:303:ARG:NH2	6:B:621:HOH:O	2.55	0.40
1:A:202:SER:HB3	1:A:249:HIS:CD2	2.56	0.40
1:B:225:VAL:HG21	1:B:231:ARG:CG	2.51	0.40
1:A:10:LEU:CD2	1:A:255:SER:HA	2.51	0.40
1:A:75:TYR:OH	1:A:77:ARG:HD2	2.20	0.40
1:A:149:ILE:O	1:A:250:LYS:HE2	2.22	0.40
1:B:52:THR:OG1	1:B:53:PRO:HD3	2.20	0.40

There are no symmetry-related clashes.

5.3 Torsion angles

5.3.1 Protein backbone

In the following table, the Percentiles column shows the percent Ramachandran outliers of the chain as a percentile score with respect to all X-ray entries followed by that with respect to entries of similar resolution.

The Analysed column shows the number of residues for which the backbone conformation was analysed, and the total number of residues.

Mol	Chain	Analysed	Favoured	Allowed	Outliers	Percentiles	
1	A	388/393 (99%)	342 (88%)	38 (10%)	8 (2%)	8	21
1	B	389/393 (99%)	347 (89%)	36 (9%)	6 (2%)	12	30
All	All	777/786 (99%)	689 (89%)	74 (10%)	14 (2%)	10	25

All (14) Ramachandran outliers are listed below:

Mol	Chain	Res	Type
1	A	341	LYS
1	A	25	TYR
1	B	25	TYR
1	B	234	GLY
1	A	234	GLY
1	A	356	LYS
1	B	356	LYS
1	B	107	THR
1	B	339	ALA
1	A	78	PRO
1	A	107	THR
1	A	262	GLY
1	A	331	ASP
1	B	262	GLY

5.3.2 Protein sidechains [i](#)

In the following table, the Percentiles column shows the percent sidechain outliers of the chain as a percentile score with respect to all X-ray entries followed by that with respect to entries of similar resolution.

The Analysed column shows the number of residues for which the sidechain conformation was analysed, and the total number of residues.

Mol	Chain	Analysed	Rotameric	Outliers	Percentiles	
1	A	323/326 (99%)	308 (95%)	15 (5%)	31	61
1	B	324/326 (99%)	308 (95%)	16 (5%)	29	58
All	All	647/652 (99%)	616 (95%)	31 (5%)	30	59

All (31) residues with a non-rotameric sidechain are listed below:

Mol	Chain	Res	Type
1	A	12	ARG
1	A	14	SER
1	A	23	ARG
1	A	78	PRO
1	A	100	ASN
1	A	225	VAL
1	A	235	THR
1	A	237	GLU
1	A	244	LEU
1	A	268	ASN
1	A	309	LYS
1	A	333	ARG
1	A	342	HIS
1	A	347	GLN
1	A	391	LEU
1	B	12	ARG
1	B	14	SER
1	B	23	ARG
1	B	62	ARG
1	B	78	PRO
1	B	100	ASN
1	B	223	ARG
1	B	225	VAL
1	B	237	GLU
1	B	268	ASN
1	B	309	LYS
1	B	333	ARG
1	B	338	THR
1	B	347	GLN
1	B	385	GLU
1	B	391	LEU

Some sidechains can be flipped to improve hydrogen bonding and reduce clashes. All (6) such sidechains are listed below:

Mol	Chain	Res	Type
1	A	3	ASN
1	A	100	ASN
1	A	275	HIS
1	A	342	HIS
1	B	100	ASN
1	B	275	HIS

5.3.3 RNA ⓘ

There are no RNA molecules in this entry.

5.4 Non-standard residues in protein, DNA, RNA chains ⓘ

There are no non-standard protein/DNA/RNA residues in this entry.

5.5 Carbohydrates ⓘ

There are no carbohydrates in this entry.

5.6 Ligand geometry ⓘ

Of 7 ligands modelled in this entry, 4 are monoatomic - leaving 3 for Mogul analysis.

In the following table, the Counts columns list the number of bonds (or angles) for which Mogul statistics could be retrieved, the number of bonds (or angles) that are observed in the model and the number of bonds (or angles) that are defined in the chemical component dictionary. The Link column lists molecule types, if any, to which the group is linked. The Z score for a bond length (or angle) is the number of standard deviations the observed value is removed from the expected value. A bond length (or angle) with $|Z| > 2$ is considered an outlier worth inspection. RMSZ is the root-mean-square of all Z scores of the bond lengths (or angles).

Mol	Type	Chain	Res	Link	Bond lengths			Bond angles		
					Counts	RMSZ	$\# Z > 2$	Counts	RMSZ	$\# Z > 2$
4	NAD	A	400	-	41,48,48	1.83	10 (24%)	43,73,73	1.72	8 (18%)
5	CRB	A	500	2	13,17,17	1.53	3 (23%)	17,27,27	0.86	1 (5%)
5	CRB	B	501	2	13,17,17	1.57	3 (23%)	17,27,27	0.96	0

In the following table, the Chirals column lists the number of chiral outliers, the number of chiral centers analysed, the number of these observed in the model and the number defined in the chemical component dictionary. Similar counts are reported in the Torsion and Rings columns. '-' means no outliers of that kind were identified.

Mol	Type	Chain	Res	Link	Chirals	Torsions	Rings
4	NAD	A	400	-	-	0/22/62/62	0/5/5/5
5	CRB	A	500	2	-	0/4/29/29	0/1/1/1
5	CRB	B	501	2	-	0/4/29/29	0/1/1/1

All (16) bond length outliers are listed below:

Mol	Chain	Res	Type	Atoms	Z	Observed(Å)	Ideal(Å)
4	A	400	NAD	C2B-C1B	-2.60	1.49	1.53
5	A	500	CRB	C3-C2	2.09	1.55	1.53
4	A	400	NAD	C7N-N7N	2.22	1.37	1.33
5	B	501	CRB	C8-C2	2.34	1.55	1.53
5	B	501	CRB	C4-C5	2.42	1.55	1.52
5	A	500	CRB	C8-C2	2.46	1.56	1.53
4	A	400	NAD	C2A-N1A	2.58	1.38	1.33
5	B	501	CRB	P1-C7	2.67	1.81	1.78
5	A	500	CRB	C4-C5	2.70	1.56	1.52
4	A	400	NAD	C5N-C4N	2.90	1.44	1.38
4	A	400	NAD	O4B-C1B	3.24	1.45	1.41
4	A	400	NAD	C3N-C7N	3.56	1.56	1.50
4	A	400	NAD	C6N-N1N	3.69	1.45	1.35
4	A	400	NAD	C4N-C3N	3.76	1.45	1.39
4	A	400	NAD	O4D-C1D	3.79	1.46	1.41
4	A	400	NAD	C4A-N3A	4.20	1.41	1.35

All (9) bond angle outliers are listed below:

Mol	Chain	Res	Type	Atoms	Z	Observed(°)	Ideal(°)
4	A	400	NAD	C5N-C4N-C3N	-5.89	113.42	120.35
4	A	400	NAD	C5N-C6N-N1N	-3.64	114.81	120.40
4	A	400	NAD	C4D-O4D-C1D	-2.76	106.83	109.77
4	A	400	NAD	C4N-C3N-C7N	-2.07	115.58	121.07
5	A	500	CRB	C8-C2-C3	2.07	112.61	110.41
4	A	400	NAD	C2B-C3B-C4B	2.09	106.69	102.62
4	A	400	NAD	C5A-C6A-N6A	2.32	125.19	120.47
4	A	400	NAD	C2N-C3N-C4N	3.64	122.41	118.26
4	A	400	NAD	C6N-C5N-C4N	4.82	126.71	119.44

There are no chirality outliers.

There are no torsion outliers.

There are no ring outliers.

2 monomers are involved in 4 short contacts:

Mol	Chain	Res	Type	Clashes	Symm-Clashes
4	A	400	NAD	3	0
5	A	500	CRB	1	0

5.7 Other polymers [i](#)

There are no such residues in this entry.

5.8 Polymer linkage issues [i](#)

There are no chain breaks in this entry.

6 Fit of model and data

6.1 Protein, DNA and RNA chains

In the following table, the column labelled ‘#RSRZ > 2’ contains the number (and percentage) of RSRZ outliers, followed by percent RSRZ outliers for the chain as percentile scores relative to all X-ray entries and entries of similar resolution. The OWAB column contains the minimum, median, 95th percentile and maximum values of the occupancy-weighted average B-factor per residue. The column labelled ‘Q < 0.9’ lists the number of (and percentage) of residues with an average occupancy less than 0.9.

Mol	Chain	Analysed	<RSRZ>	#RSRZ>2	OWAB(Å ²)	Q<0.9
1	A	390/393 (99%)	-0.36	7 (1%) 69 70	5, 14, 51, 68	0
1	B	391/393 (99%)	-0.29	13 (3%) 47 46	6, 15, 51, 70	0
All	All	781/786 (99%)	-0.33	20 (2%) 56 56	5, 14, 51, 70	0

All (20) RSRZ outliers are listed below:

Mol	Chain	Res	Type	RSRZ
1	B	81	GLU	4.8
1	B	77	ARG	4.3
1	B	82	VAL	3.9
1	B	78	PRO	3.6
1	B	80	GLY	3.6
1	A	227	PRO	3.6
1	A	77	ARG	3.6
1	A	65	GLU	2.8
1	B	65	GLU	2.7
1	B	3	ASN	2.7
1	A	80	GLY	2.6
1	A	392	ALA	2.4
1	B	233	GLU	2.4
1	A	234	GLY	2.3
1	B	67	THR	2.3
1	B	66	ILE	2.3
1	A	66	ILE	2.2
1	B	79	PRO	2.1
1	B	225	VAL	2.1
1	B	229	GLU	2.0

6.2 Non-standard residues in protein, DNA, RNA chains [i](#)

There are no non-standard protein/DNA/RNA residues in this entry.

6.3 Carbohydrates [i](#)

There are no carbohydrates in this entry.

6.4 Ligands [i](#)

In the following table, the Atoms column lists the number of modelled atoms in the group and the number defined in the chemical component dictionary. LLDF column lists the quality of electron density of the group with respect to its neighbouring residues in protein, DNA or RNA chains. The B-factors column lists the minimum, median, 95th percentile and maximum values of B factors of atoms in the group. The column labelled 'Q< 0.9' lists the number of atoms with occupancy less than 0.9.

Mol	Type	Chain	Res	Atoms	RSCC	RSR	LLDF	B-factors(Å ²)	Q<0.9
2	ZN	A	600	1/1	0.98	0.25	3.72	48,48,48,48	0
4	NAD	A	400	44/44	0.86	0.26	1.88	43,61,71,78	0
5	CRB	A	500	17/17	0.97	0.18	1.16	5,16,32,34	0
5	CRB	B	501	17/17	0.96	0.15	0.40	4,12,22,22	0
3	CL	A	604	1/1	0.95	0.12	-	31,31,31,31	0
3	CL	A	605	1/1	0.99	0.06	-	41,41,41,41	0
2	ZN	B	601	1/1	0.95	0.23	-	48,48,48,48	0

6.5 Other polymers [i](#)

There are no such residues in this entry.