



# Full wwPDB X-ray Structure Validation Report ⓘ

Aug 1, 2017 – 11:15 PM EDT

PDB ID : 4NWK  
Title : Crystal structure of hepatitis c virus protease (ns3) complexed with bms-605339  
aka n-(tert-butoxycarbonyl)-3-methyl-L-valyl-(4R)-N-((1R,2S)-1-((cyclopropyl  
sulfonyl)carbamoyl)-2-vinylcyclopropyl)-4-((6-methoxy-1-isoquinolinyloxy)-L-prolinamide  
Authors : Muckelbauer, J.K.; Klei, H.E.  
Deposited on : unknown  
Resolution : 1.62 Å(reported)

This is a Full wwPDB X-ray Structure Validation Report for a publicly released PDB entry.

We welcome your comments at [validation@mail.wwpdb.org](mailto:validation@mail.wwpdb.org)

A user guide is available at

<http://wwpdb.org/validation/2016/XrayValidationReportHelp>

with specific help available everywhere you see the ⓘ symbol.

---

The following versions of software and data (see [references ⓘ](#)) were used in the production of this report:

MolProbity	:	4.02b-467
Mogul	:	1.7.2 (RC1), CSD as538be (2017)
Xtriage (Phenix)	:	1.9-1692
EDS	:	rb-20029824
Percentile statistics	:	20161228.v01 (using entries in the PDB archive December 28th 2016)
Refmac	:	5.8.0135
CCP4	:	6.5.0
Ideal geometry (proteins)	:	Engh & Huber (2001)
Ideal geometry (DNA, RNA)	:	Parkinson et al. (1996)
Validation Pipeline (wwPDB-VP)	:	rb-20029824

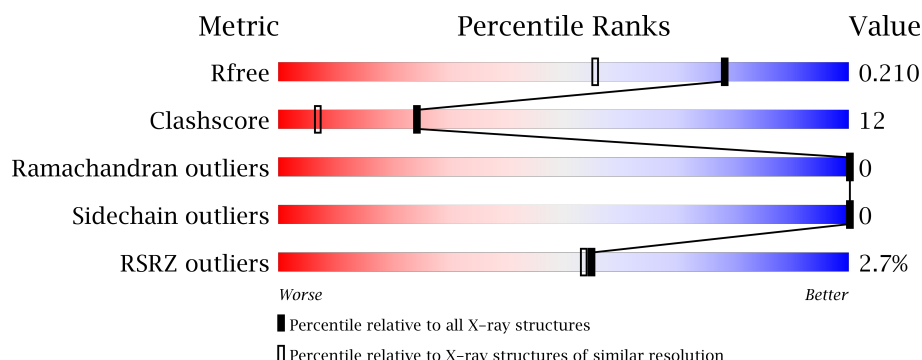
# 1 Overall quality at a glance

The following experimental techniques were used to determine the structure:

## *X-RAY DIFFRACTION*

The reported resolution of this entry is 1.62 Å.

Percentile scores (ranging between 0-100) for global validation metrics of the entry are shown in the following graphic. The table shows the number of entries on which the scores are based.



Metric	Whole archive (#Entries)	Similar resolution (#Entries, resolution range(Å))
$R_{free}$	100719	3539 (1.64-1.60)
Clashscore	112137	3855 (1.64-1.60)
Ramachandran outliers	110173	3764 (1.64-1.60)
Sidechain outliers	110143	3763 (1.64-1.60)
RSRZ outliers	101464	3562 (1.64-1.60)

The table below summarises the geometric issues observed across the polymeric chains and their fit to the electron density. The red, orange, yellow and green segments on the lower bar indicate the fraction of residues that contain outliers for  $\geq 3$ , 2, 1 and 0 types of geometric quality criteria. A grey segment represents the fraction of residues that are not modelled. The numeric value for each fraction is indicated below the corresponding segment, with a dot representing fractions  $\leq 5\%$ . The upper red bar (where present) indicates the fraction of residues that have poor fit to the electron density. The numeric value is given above the bar.

Mol	Chain	Length	Quality of chain
1	A	219	<div> <div>2%</div> <div>73%</div> <div>13%</div> <div>14%</div> </div>

The following table lists non-polymeric compounds, carbohydrate monomers and non-standard residues in protein, DNA, RNA chains that are outliers for geometric or electron-density-fit criteria:

Mol	Type	Chain	Res	Chirality	Geometry	Clashes	Electron density
3	ZN	A	302	-	-	-	X
5	GOL	A	304	-	-	-	X

*Continued on next page...*

*Continued from previous page...*

Mol	Type	Chain	Res	Chirality	Geometry	Clashes	Electron density
5	GOL	A	305	-	-	-	X
5	GOL	A	306	-	-	-	X
5	GOL	A	308	-	-	-	X
5	GOL	A	310	-	-	-	X

## 2 Entry composition

There are 6 unique types of molecules in this entry. The entry contains 1715 atoms, of which 0 are hydrogens and 0 are deuteriums.

In the tables below, the ZeroOcc column contains the number of atoms modelled with zero occupancy, the AltConf column contains the number of residues with at least one atom in alternate conformation and the Trace column contains the number of residues modelled with at most 2 atoms.

- Molecule 1 is a protein called HCV NS3 1a Protease.

Mol	Chain	Residues	Atoms					ZeroOcc	AltConf	Trace
1	A	188	Total	C	N	O	S	0	12	0
			1415	871	258	280	6			

There are 43 discrepancies between the modelled and reference sequences:

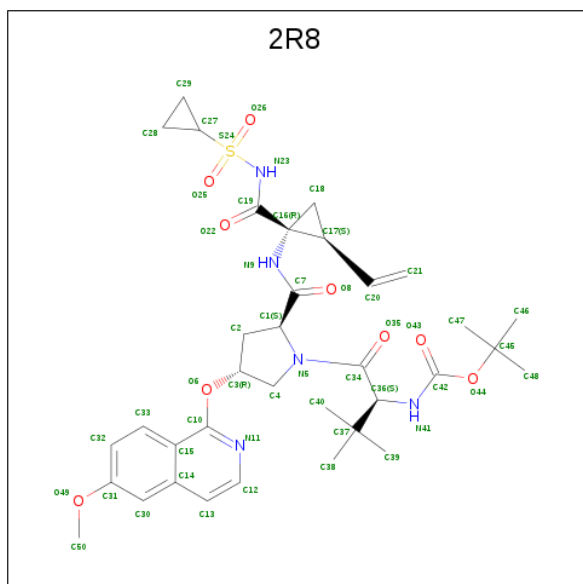
Chain	Residue	Modelled	Actual	Comment	Reference
A	-14	MET	-	EXPRESSION TAG	UNP A8DG50
A	-13	LYS	-	EXPRESSION TAG	UNP A8DG50
A	-12	LYS	-	EXPRESSION TAG	UNP A8DG50
A	-11	LYS	-	EXPRESSION TAG	UNP A8DG50
A	-9	SER	CYS	SEE REMARK 999	UNP A8DG50
A	-2	ILE	VAL	SEE REMARK 999	UNP A8DG50
A	-1	ASN	ILE	SEE REMARK 999	UNP A8DG50
A	1	SER	-	LINKER	UNP A8DG50
A	2	GLY	-	LINKER	UNP A8DG50
A	3	ASP	-	LINKER	UNP A8DG50
A	4	THR	-	LINKER	UNP A8DG50
A	13	GLU	LEU	ENGINEERED MUTATION	UNP A8DG50
A	14	GLU	LEU	ENGINEERED MUTATION	UNP A8DG50
A	17	GLN	ILE	ENGINEERED MUTATION	UNP A8DG50
A	18	GLU	ILE	ENGINEERED MUTATION	UNP A8DG50
A	21	GLN	LEU	ENGINEERED MUTATION	UNP A8DG50
A	40	THR	ALA	ENGINEERED MUTATION	UNP A8DG50
A	47	SER	CYS	ENGINEERED MUTATION	UNP A8DG50
A	52	LEU	CYS	ENGINEERED MUTATION	UNP A8DG50
A	72	THR	ILE	ENGINEERED MUTATION	UNP A8DG50
A	86	GLN	PRO	ENGINEERED MUTATION	UNP A8DG50
A	183	ALA	-	EXPRESSION TAG	UNP A8DG50
A	184	ILE	-	EXPRESSION TAG	UNP A8DG50
A	185	ARG	-	EXPRESSION TAG	UNP A8DG50
A	186	ALA	-	EXPRESSION TAG	UNP A8DG50
A	187	PRO	-	EXPRESSION TAG	UNP A8DG50
A	188	SER	-	EXPRESSION TAG	UNP A8DG50

*Continued on next page...*

Continued from previous page...

Chain	Residue	Modelled	Actual	Comment	Reference
A	189	THR	-	EXPRESSION TAG	UNP A8DG50
A	190	SER	-	EXPRESSION TAG	UNP A8DG50
A	191	LEU	-	EXPRESSION TAG	UNP A8DG50
A	192	ARG	-	EXPRESSION TAG	UNP A8DG50
A	193	PRO	-	EXPRESSION TAG	UNP A8DG50
A	194	HIS	-	EXPRESSION TAG	UNP A8DG50
A	195	SER	-	EXPRESSION TAG	UNP A8DG50
A	196	SER	-	EXPRESSION TAG	UNP A8DG50
A	197	THR	-	EXPRESSION TAG	UNP A8DG50
A	198	THR	-	EXPRESSION TAG	UNP A8DG50
A	199	THR	-	EXPRESSION TAG	UNP A8DG50
A	200	THR	-	EXPRESSION TAG	UNP A8DG50
A	201	THR	-	EXPRESSION TAG	UNP A8DG50
A	202	THR	-	EXPRESSION TAG	UNP A8DG50
A	203	GLU	-	EXPRESSION TAG	UNP A8DG50
A	204	ILE	-	EXPRESSION TAG	UNP A8DG50

- Molecule 2 is N-(tert-butoxycarbonyl)-3-methyl-L-valyl-(4R)-N-{(1R,2S)-1-[(cyclopropylsulfonyl)carbamoyl]-2-ethenylcyclopropyl}-4-[(6-methoxyisoquinolin-1-yl)oxy]-L-prolinamide (three-letter code: 2R8) (formula: C<sub>35</sub>H<sub>47</sub>N<sub>5</sub>O<sub>9</sub>S).

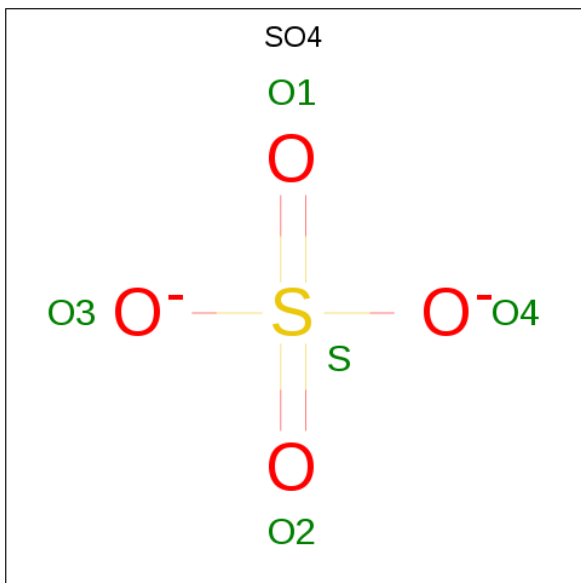


Mol	Chain	Residues	Atoms					ZeroOcc	AltConf
2	A	1	Total	C	N	O	S	0	0
			50	35	5	9	1		

- Molecule 3 is ZINC ION (three-letter code: ZN) (formula: Zn).

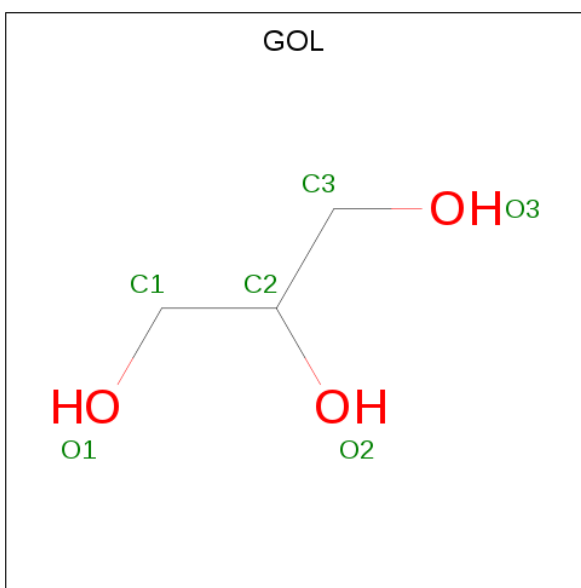
Mol	Chain	Residues	Atoms		ZeroOcc	AltConf
3	A	1	Total	Zn	0	0
			1	1		

- Molecule 4 is SULFATE ION (three-letter code: SO4) (formula: O<sub>4</sub>S).



Mol	Chain	Residues	Atoms			ZeroOcc	AltConf
4	A	1	Total	O	S	0	0
			5	4	1		

- Molecule 5 is GLYCEROL (three-letter code: GOL) (formula: C<sub>3</sub>H<sub>8</sub>O<sub>3</sub>).



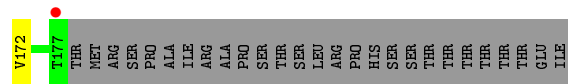
Mol	Chain	Residues	Atoms			ZeroOcc	AltConf
5	A	1	Total	C	O	0	0
			6	3	3		
5	A	1	Total	C	O	0	0
			6	3	3		
5	A	1	Total	C	O	0	0
			6	3	3		
5	A	1	Total	C	O	0	0
			6	3	3		
5	A	1	Total	C	O	0	0
			6	3	3		
5	A	1	Total	C	O	0	0
			6	3	3		

- Molecule 6 is water.

Mol	Chain	Residues	Atoms		ZeroOcc	AltConf
6	A	202	Total	O	0	0
			202	202		

**i**

- Molecule 1: HCV NS3 1a Protease





## 4 Data and refinement statistics

Property	Value	Source
Space group	P 21 21 2	Depositor
Cell constants a, b, c, $\alpha$ , $\beta$ , $\gamma$	43.20 Å   103.85 Å   45.30 Å 90.00°   90.00°   90.00°	Depositor
Resolution (Å)	34.14 – 1.62 34.13 – 1.62	Depositor EDS
% Data completeness (in resolution range)	98.5 (34.14-1.62) 98.7 (34.13-1.62)	Depositor EDS
$R_{merge}$	(Not available)	Depositor
$R_{sym}$	(Not available)	Depositor
$\langle I/\sigma(I) \rangle$ <sup>1</sup>	4.77 (at 1.62 Å)	Xtriage
Refinement program	CNS, CNX 2005	Depositor
R, $R_{free}$	0.198 , 0.213 0.197 , 0.210	Depositor DCC
$R_{free}$ test set	1017 reflections (4.05%)	DCC
Wilson B-factor (Å <sup>2</sup> )	11.2	Xtriage
Anisotropy	0.210	Xtriage
Bulk solvent $k_{sol}$ (e/Å <sup>3</sup> ), $B_{sol}$ (Å <sup>2</sup> )	0.42 , 48.4	EDS
L-test for twinning <sup>2</sup>	$\langle  L  \rangle = 0.48$ , $\langle L^2 \rangle = 0.31$	Xtriage
Estimated twinning fraction	0.024 for l,-k,h	Xtriage
$F_o, F_c$ correlation	0.94	EDS
Total number of atoms	1715	wwPDB-VP
Average B, all atoms (Å <sup>2</sup> )	13.0	wwPDB-VP

Xtriage's analysis on translational NCS is as follows: *The largest off-origin peak in the Patterson function is 7.87% of the height of the origin peak. No significant pseudotranslation is detected.*

<sup>1</sup>Intensities estimated from amplitudes.

<sup>2</sup>Theoretical values of  $\langle |L| \rangle$ ,  $\langle L^2 \rangle$  for acentric reflections are 0.5, 0.333 respectively for untwinned datasets, and 0.375, 0.2 for perfectly twinned datasets.

## 5 Model quality

### 5.1 Standard geometry

Bond lengths and bond angles in the following residue types are not validated in this section: GOL, ZN, SO4, 2R8

The Z score for a bond length (or angle) is the number of standard deviations the observed value is removed from the expected value. A bond length (or angle) with  $|Z| > 5$  is considered an outlier worth inspection. RMSZ is the root-mean-square of all Z scores of the bond lengths (or angles).

Mol	Chain	Bond lengths		Bond angles	
		RMSZ	$\# Z  > 5$	RMSZ	$\# Z  > 5$
1	A	0.26	0/1500	0.49	0/2041

There are no bond length outliers.

There are no bond angle outliers.

There are no chirality outliers.

There are no planarity outliers.

### 5.2 Too-close contacts

In the following table, the Non-H and H(model) columns list the number of non-hydrogen atoms and hydrogen atoms in the chain respectively. The H(added) column lists the number of hydrogen atoms added and optimized by MolProbity. The Clashes column lists the number of clashes within the asymmetric unit, whereas Symm-Clashes lists symmetry related clashes.

Mol	Chain	Non-H	H(model)	H(added)	Clashes	Symm-Clashes
1	A	1415	0	1426	35	0
2	A	50	0	45	0	0
3	A	1	0	0	0	0
4	A	5	0	0	0	0
5	A	42	0	56	11	0
6	A	202	0	0	6	0
All	All	1715	0	1527	38	0

The all-atom clashscore is defined as the number of clashes found per 1000 atoms (including hydrogen atoms). The all-atom clashscore for this structure is 12.

All (38) close contacts within the same asymmetric unit are listed below, sorted by their clash magnitude.

Atom-1	Atom-2	Interatomic distance (Å)	Clash overlap (Å)
1:A:107[B]:VAL:CG2	1:A:142:PRO:HD2	2.11	0.80
1:A:42[B]:THR:HG21	1:A:109:ARG:HH22	1.45	0.80
1:A:42[B]:THR:HG22	1:A:109:ARG:HH12	1.57	0.70
1:A:74:MET:HE3	1:A:75:TYR:HE2	1.58	0.68
1:A:42[B]:THR:CG2	1:A:109:ARG:HH22	2.07	0.65
1:A:22:THR:HG22	5:A:307:GOL:H31	1.82	0.61
5:A:309:GOL:H31	6:A:561:HOH:O	2.03	0.59
1:A:42[B]:THR:HG21	1:A:109:ARG:NH2	2.17	0.59
5:A:305:GOL:O1	5:A:310:GOL:H31	2.03	0.59
1:A:60:GLY:HA3	5:A:306:GOL:H32	1.86	0.58
1:A:107[B]:VAL:HG21	1:A:142:PRO:HD2	1.87	0.57
1:A:0:LEU:HB3	5:A:308:GOL:H31	1.87	0.56
1:A:37[B]:SER:OG	1:A:42[B]:THR:HG23	2.05	0.56
1:A:77:ASN:ND2	1:A:80:LYS:HE2	2.22	0.55
5:A:304:GOL:H2	6:A:539:HOH:O	2.06	0.54
1:A:104:LEU:HD22	1:A:151:VAL:HG21	1.89	0.53
1:A:151:VAL:C	1:A:172[A]:VAL:HG13	2.30	0.53
1:A:42[B]:THR:HG22	1:A:109:ARG:NH1	2.24	0.51
1:A:62:ARG:NE	5:A:306:GOL:H31	2.26	0.51
1:A:86:GLN:NE2	6:A:472:HOH:O	2.44	0.51
1:A:86:GLN:O	5:A:304:GOL:H32	2.11	0.50
1:A:107[B]:VAL:HG22	1:A:142:PRO:HD2	1.89	0.50
1:A:74:MET:HE3	1:A:75:TYR:CE2	2.43	0.50
1:A:2:GLY:O	5:A:308:GOL:H12	2.13	0.48
1:A:61:THR:N	5:A:306:GOL:O1	2.36	0.48
1:A:132:ILE:O	1:A:136[B]:LYS:HG2	2.14	0.48
1:A:107[B]:VAL:CG2	1:A:142:PRO:CD	2.91	0.45
1:A:110:HIS:O	1:A:111:ALA:HB3	2.17	0.45
1:A:42[B]:THR:CG2	1:A:109:ARG:NH2	2.76	0.45
1:A:92:ARG:HD2	6:A:574:HOH:O	2.16	0.45
1:A:24[B]:ARG:HE	1:A:26:LYS:HE2	1.83	0.43
1:A:92:ARG:NH1	6:A:509:HOH:O	2.49	0.43
1:A:86:GLN:HB3	5:A:304:GOL:O3	2.18	0.43
1:A:-3:ARG:HB2	6:A:479:HOH:O	2.20	0.41
1:A:72[B]:THR:HG22	1:A:73:GLN:N	2.36	0.41
1:A:92:ARG:HG2	1:A:92:ARG:HH11	1.86	0.40

There are no symmetry-related clashes.

## 5.3 Torsion angles [i](#)

### 5.3.1 Protein backbone [i](#)

In the following table, the Percentiles column shows the percent Ramachandran outliers of the chain as a percentile score with respect to all X-ray entries followed by that with respect to entries of similar resolution.

The Analysed column shows the number of residues for which the backbone conformation was analysed, and the total number of residues.

Mol	Chain	Analysed	Favoured	Allowed	Outliers	Percentiles	
1	A	198/219 (90%)	195 (98%)	3 (2%)	0	100	100

There are no Ramachandran outliers to report.

### 5.3.2 Protein sidechains [i](#)

In the following table, the Percentiles column shows the percent sidechain outliers of the chain as a percentile score with respect to all X-ray entries followed by that with respect to entries of similar resolution.

The Analysed column shows the number of residues for which the sidechain conformation was analysed, and the total number of residues.

Mol	Chain	Analysed	Rotameric	Outliers	Percentiles	
1	A	164/181 (91%)	164 (100%)	0	100	100

There are no protein residues with a non-rotameric sidechain to report.

Some sidechains can be flipped to improve hydrogen bonding and reduce clashes. All (4) such sidechains are listed below:

Mol	Chain	Res	Type
1	A	9	GLN
1	A	27	ASN
1	A	86	GLN
1	A	89	GLN

### 5.3.3 RNA [i](#)

There are no RNA molecules in this entry.

## 5.4 Non-standard residues in protein, DNA, RNA chains [i](#)

There are no non-standard protein/DNA/RNA residues in this entry.

## 5.5 Carbohydrates [i](#)

There are no carbohydrates in this entry.

## 5.6 Ligand geometry [i](#)

Of 10 ligands modelled in this entry, 1 is monoatomic - leaving 9 for Mogul analysis.

In the following table, the Counts columns list the number of bonds (or angles) for which Mogul statistics could be retrieved, the number of bonds (or angles) that are observed in the model and the number of bonds (or angles) that are defined in the chemical component dictionary. The Link column lists molecule types, if any, to which the group is linked. The Z score for a bond length (or angle) is the number of standard deviations the observed value is removed from the expected value. A bond length (or angle) with  $|Z| > 2$  is considered an outlier worth inspection. RMSZ is the root-mean-square of all Z scores of the bond lengths (or angles).

Mol	Type	Chain	Res	Link	Bond lengths			Bond angles		
					Counts	RMSZ	$\# Z  > 2$	Counts	RMSZ	$\# Z  > 2$
2	2R8	A	301	-	51,54,54	1.95	12 (23%)	71,84,84	2.59	14 (19%)
4	SO4	A	303	-	4,4,4	0.42	0	6,6,6	0.18	0
5	GOL	A	304	-	5,5,5	0.24	0	5,5,5	0.84	0
5	GOL	A	305	-	5,5,5	0.58	0	5,5,5	0.66	0
5	GOL	A	306	-	5,5,5	0.39	0	5,5,5	0.49	0
5	GOL	A	307	-	5,5,5	0.34	0	5,5,5	1.08	1 (20%)
5	GOL	A	308	-	5,5,5	0.43	0	5,5,5	0.32	0
5	GOL	A	309	-	5,5,5	0.41	0	5,5,5	0.23	0
5	GOL	A	310	-	5,5,5	0.38	0	5,5,5	0.36	0

In the following table, the Chirals column lists the number of chiral outliers, the number of chiral centers analysed, the number of these observed in the model and the number defined in the chemical component dictionary. Similar counts are reported in the Torsion and Rings columns. '-' means no outliers of that kind were identified.

Mol	Type	Chain	Res	Link	Chirals	Torsions	Rings
2	2R8	A	301	-	-	0/53/79/79	0/3/5/5
4	SO4	A	303	-	-	0/0/0/0	0/0/0/0
5	GOL	A	304	-	-	0/4/4/4	0/0/0/0
5	GOL	A	305	-	-	0/4/4/4	0/0/0/0
5	GOL	A	306	-	-	0/4/4/4	0/0/0/0

*Continued on next page...*

*Continued from previous page...*

Mol	Type	Chain	Res	Link	Chirals	Torsions	Rings
5	GOL	A	307	-	-	0/4/4/4	0/0/0/0
5	GOL	A	308	-	-	0/4/4/4	0/0/0/0
5	GOL	A	309	-	-	0/4/4/4	0/0/0/0
5	GOL	A	310	-	-	0/4/4/4	0/0/0/0

All (12) bond length outliers are listed below:

Mol	Chain	Res	Type	Atoms	Z	Observed(Å)	Ideal(Å)
2	A	301	2R8	C18-C16	-2.82	1.48	1.51
2	A	301	2R8	O44-C45	-2.68	1.43	1.48
2	A	301	2R8	C16-C17	-2.43	1.49	1.54
2	A	301	2R8	C29-C27	-2.37	1.46	1.50
2	A	301	2R8	C16-C19	-2.14	1.49	1.53
2	A	301	2R8	O6-C10	2.05	1.38	1.35
2	A	301	2R8	C12-N11	2.37	1.39	1.34
2	A	301	2R8	C33-C32	3.63	1.44	1.36
2	A	301	2R8	C32-C31	3.79	1.46	1.38
2	A	301	2R8	C30-C31	5.14	1.46	1.37
2	A	301	2R8	C15-C14	5.22	1.52	1.43
2	A	301	2R8	C13-C12	6.15	1.45	1.36

All (15) bond angle outliers are listed below:

Mol	Chain	Res	Type	Atoms	Z	Observed(°)	Ideal(°)
2	A	301	2R8	C18-C16-N9	-9.61	105.01	117.85
2	A	301	2R8	C17-C16-N9	-8.42	100.57	117.61
2	A	301	2R8	C2-C3-C4	-7.18	97.31	103.63
2	A	301	2R8	C13-C12-N11	-6.50	117.07	123.80
2	A	301	2R8	C15-C10-N11	-3.22	121.44	124.42
2	A	301	2R8	C37-C36-N41	-2.63	108.72	111.85
2	A	301	2R8	O22-C19-C16	-2.18	118.17	120.77
2	A	301	2R8	C30-C14-C15	-2.03	116.66	119.23
2	A	301	2R8	C34-C36-N41	2.10	109.56	107.39
5	A	307	GOL	C3-C2-C1	2.10	119.87	111.52
2	A	301	2R8	C33-C15-C14	3.58	122.52	117.89
2	A	301	2R8	C12-N11-C10	3.99	125.62	116.60
2	A	301	2R8	C17-C16-C19	5.65	127.65	117.08
2	A	301	2R8	C17-C20-C21	6.05	146.23	125.80
2	A	301	2R8	C19-C16-N9	6.19	123.15	116.09

There are no chirality outliers.

There are no torsion outliers.

There are no ring outliers.

7 monomers are involved in 11 short contacts:

Mol	Chain	Res	Type	Clashes	Symm-Clashes
5	A	304	GOL	3	0
5	A	305	GOL	1	0
5	A	306	GOL	3	0
5	A	307	GOL	1	0
5	A	308	GOL	2	0
5	A	309	GOL	1	0
5	A	310	GOL	1	0

## 5.7 Other polymers [i](#)

There are no such residues in this entry.

## 5.8 Polymer linkage issues [i](#)

There are no chain breaks in this entry.

## 6 Fit of model and data [i](#)

### 6.1 Protein, DNA and RNA chains [i](#)

In the following table, the column labelled ‘#RSRZ> 2’ contains the number (and percentage) of RSRZ outliers, followed by percent RSRZ outliers for the chain as percentile scores relative to all X-ray entries and entries of similar resolution. The OWAB column contains the minimum, median, 95<sup>th</sup> percentile and maximum values of the occupancy-weighted average B-factor per residue. The column labelled ‘Q< 0.9’ lists the number of (and percentage) of residues with an average occupancy less than 0.9.

Mol	Chain	Analysed	<RSRZ>	#RSRZ>2	OWAB(Å <sup>2</sup> )	Q<0.9
1	A	188/219 (85%)	0.07	5 (2%) 55 53	5, 11, 21, 28	0

All (5) RSRZ outliers are listed below:

Mol	Chain	Res	Type	RSRZ
1	A	99	CYS	4.4
1	A	98	THR	3.6
1	A	92	ARG	2.6
1	A	177	THR	2.6
1	A	161	ARG	2.0

### 6.2 Non-standard residues in protein, DNA, RNA chains [i](#)

There are no non-standard protein/DNA/RNA residues in this entry.

### 6.3 Carbohydrates [i](#)

There are no carbohydrates in this entry.

### 6.4 Ligands [i](#)

In the following table, the Atoms column lists the number of modelled atoms in the group and the number defined in the chemical component dictionary. LLDF column lists the quality of electron density of the group with respect to its neighbouring residues in protein, DNA or RNA chains. The B-factors column lists the minimum, median, 95<sup>th</sup> percentile and maximum values of B factors of atoms in the group. The column labelled ‘Q< 0.9’ lists the number of atoms with occupancy less than 0.9.

Mol	Type	Chain	Res	Atoms	RSCC	RSR	LLDF	B-factors(Å <sup>2</sup> )	Q<0.9
5	GOL	A	305	6/6	0.74	0.30	13.84	22,24,27,29	0

*Continued on next page...*



*Continued from previous page...*

Mol	Type	Chain	Res	Atoms	RSCC	RSR	LLDF	B-factors( $\text{\AA}^2$ )	Q<0.9
5	GOL	A	306	6/6	0.83	0.21	11.44	20,22,24,26	0
3	ZN	A	302	1/1	0.11	0.70	8.59	126,126,126,126	0
5	GOL	A	310	6/6	0.84	0.20	5.86	19,23,26,28	0
5	GOL	A	308	6/6	0.72	0.33	4.53	23,25,27,29	0
5	GOL	A	304	6/6	0.78	0.21	2.34	20,22,24,27	0
5	GOL	A	307	6/6	0.85	0.21	1.52	20,23,25,27	0
4	SO4	A	303	5/5	0.98	0.10	1.43	18,20,21,21	0
2	2R8	A	301	50/50	0.96	0.09	0.22	5,7,11,12	0
5	GOL	A	309	6/6	0.89	0.17	-	24,25,26,27	0

## 6.5 Other polymers [i](#)

There are no such residues in this entry.