



Full wwPDB X-ray Structure Validation Report ⓘ

Feb 28, 2018 – 07:10 AM EST

PDB ID : 4NZD
Title : Interleukin 21 receptor
Authors : Hamming, O.T.; Kang, L.; Siupka, P.; Gad, H.H.; Hartmann, R.
Deposited on : 2013-12-12
Resolution : 2.75 Å(reported)

This is a Full wwPDB X-ray Structure Validation Report for a publicly released PDB entry.

We welcome your comments at validation@mail.wwpdb.org

A user guide is available at

<http://wwpdb.org/validation/2016/XrayValidationReportHelp>

with specific help available everywhere you see the ⓘ symbol.

The following versions of software and data (see [references ⓘ](#)) were used in the production of this report:

MolProbity : 4.02b-467
Mogul : 1.7.2 (RC1), CSD as538be (2017)
Xtriage (Phenix) : 1.9-1692
EDS : rb-20030736
Percentile statistics : 20161228.v01 (using entries in the PDB archive December 28th 2016)
Refmac : 5.8.0135
CCP4 : 6.5.0
Ideal geometry (proteins) : Engh & Huber (2001)
Ideal geometry (DNA, RNA) : Parkinson et al. (1996)
Validation Pipeline (wwPDB-VP) : rb-20030736

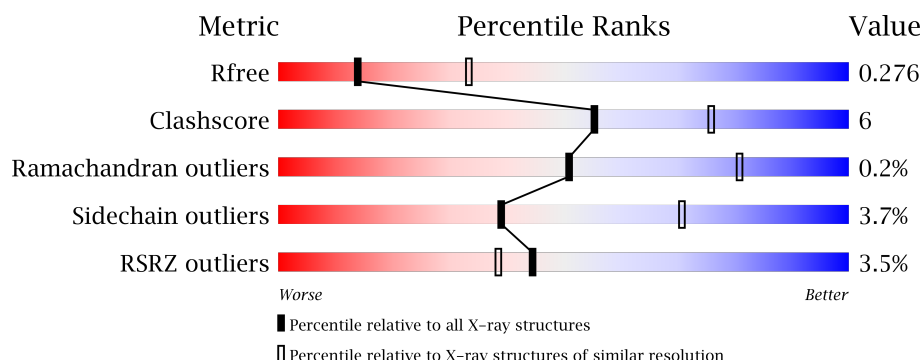
1 Overall quality at a glance

The following experimental techniques were used to determine the structure:

X-RAY DIFFRACTION

The reported resolution of this entry is 2.75 Å.

Percentile scores (ranging between 0-100) for global validation metrics of the entry are shown in the following graphic. The table shows the number of entries on which the scores are based.



Metric	Whole archive (#Entries)	Similar resolution (#Entries, resolution range(Å))
R_{free}	100719	3666 (2.80-2.72)
Clashscore	112137	4174 (2.80-2.72)
Ramachandran outliers	110173	4103 (2.80-2.72)
Sidechain outliers	110143	4106 (2.80-2.72)
RSRZ outliers	101464	3697 (2.80-2.72)

The table below summarises the geometric issues observed across the polymeric chains and their fit to the electron density. The red, orange, yellow and green segments on the lower bar indicate the fraction of residues that contain outliers for ≥ 3 , 2, 1 and 0 types of geometric quality criteria. A grey segment represents the fraction of residues that are not modelled. The numeric value for each fraction is indicated below the corresponding segment, with a dot representing fractions $\leq 5\%$. The upper red bar (where present) indicates the fraction of residues that have poor fit to the electron density. The numeric value is given above the bar.

Mol	Chain	Length	Quality of chain
1	A	219	<div> <div>5%</div> <div>83%</div> <div>11%</div> <div>• •</div> </div>
1	B	219	<div> <div>3%</div> <div>81%</div> <div>14%</div> <div>5%</div> </div>
1	C	219	<div> <div>2%</div> <div>84%</div> <div>11%</div> <div>• •</div> </div>

The following table lists non-polymeric compounds, carbohydrate monomers and non-standard residues in protein, DNA, RNA chains that are outliers for geometric or electron-density-fit criteria:

Mol	Type	Chain	Res	Chirality	Geometry	Clashes	Electron density
3	FUC	A	302	X	-	-	X
3	FUC	B	302	X	-	-	X
3	FUC	C	302	X	-	-	-
6	NA	A	307	-	-	-	X
8	TLA	A	314	-	-	-	X
8	TLA	A	315	-	-	-	X
8	TLA	B	312	-	-	-	X

2 Entry composition

There are 10 unique types of molecules in this entry. The entry contains 5498 atoms, of which 0 are hydrogens and 0 are deuteriums.

In the tables below, the ZeroOcc column contains the number of atoms modelled with zero occupancy, the AltConf column contains the number of residues with at least one atom in alternate conformation and the Trace column contains the number of residues modelled with at most 2 atoms.

- Molecule 1 is a protein called Interleukin-21 receptor.

Mol	Chain	Residues	Atoms					ZeroOcc	AltConf	Trace
1	A	210	Total	C	N	O	S	0	0	0
			1689	1071	285	322	11			
1	B	208	Total	C	N	O	S	0	0	0
			1686	1070	277	328	11			
1	C	210	Total	C	N	O	S	0	1	0
			1702	1080	290	322	10			

There are 30 discrepancies between the modelled and reference sequences:

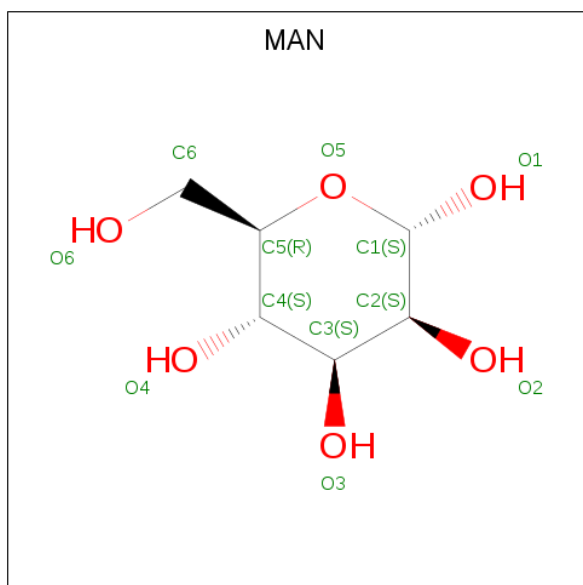
Chain	Residue	Modelled	Actual	Comment	Reference
A	78	GLN	ASN	CONFLICT	UNP Q9HBE5
A	85	GLN	ASN	CONFLICT	UNP Q9HBE5
A	106	ASP	ASN	CONFLICT	UNP Q9HBE5
A	116	GLN	ASN	CONFLICT	UNP Q9HBE5
A	214	HIS	-	EXPRESSION TAG	UNP Q9HBE5
A	215	HIS	-	EXPRESSION TAG	UNP Q9HBE5
A	216	HIS	-	EXPRESSION TAG	UNP Q9HBE5
A	217	HIS	-	EXPRESSION TAG	UNP Q9HBE5
A	218	HIS	-	EXPRESSION TAG	UNP Q9HBE5
A	219	HIS	-	EXPRESSION TAG	UNP Q9HBE5
B	78	GLN	ASN	CONFLICT	UNP Q9HBE5
B	85	GLN	ASN	CONFLICT	UNP Q9HBE5
B	106	ASP	ASN	CONFLICT	UNP Q9HBE5
B	116	GLN	ASN	CONFLICT	UNP Q9HBE5
B	214	HIS	-	EXPRESSION TAG	UNP Q9HBE5
B	215	HIS	-	EXPRESSION TAG	UNP Q9HBE5
B	216	HIS	-	EXPRESSION TAG	UNP Q9HBE5
B	217	HIS	-	EXPRESSION TAG	UNP Q9HBE5
B	218	HIS	-	EXPRESSION TAG	UNP Q9HBE5
B	219	HIS	-	EXPRESSION TAG	UNP Q9HBE5
C	78	GLN	ASN	CONFLICT	UNP Q9HBE5
C	85	GLN	ASN	CONFLICT	UNP Q9HBE5
C	106	ASP	ASN	CONFLICT	UNP Q9HBE5

Continued on next page...

Continued from previous page...

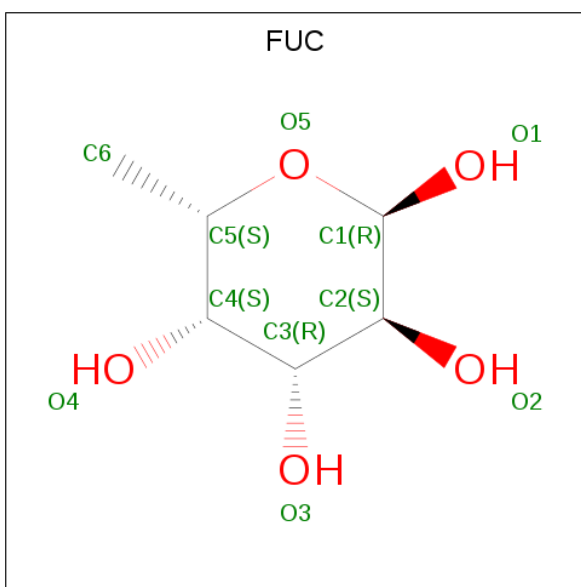
Chain	Residue	Modelled	Actual	Comment	Reference
C	116	GLN	ASN	CONFLICT	UNP Q9HBE5
C	214	HIS	-	EXPRESSION TAG	UNP Q9HBE5
C	215	HIS	-	EXPRESSION TAG	UNP Q9HBE5
C	216	HIS	-	EXPRESSION TAG	UNP Q9HBE5
C	217	HIS	-	EXPRESSION TAG	UNP Q9HBE5
C	218	HIS	-	EXPRESSION TAG	UNP Q9HBE5
C	219	HIS	-	EXPRESSION TAG	UNP Q9HBE5

- Molecule 2 is ALPHA-D-MANNOSE (three-letter code: MAN) (formula: $C_6H_{12}O_6$).



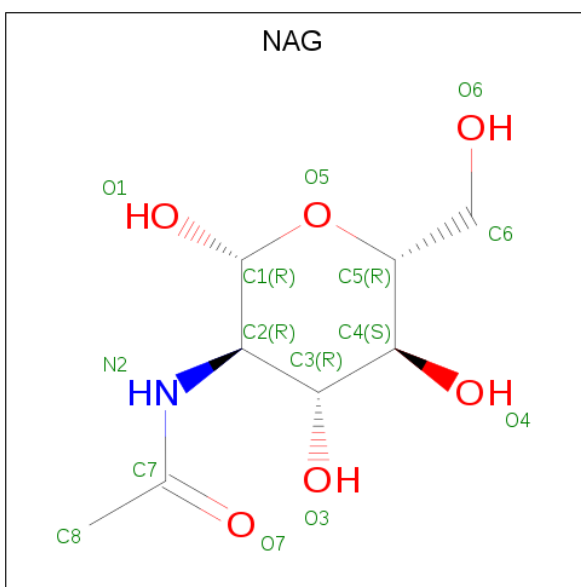
Mol	Chain	Residues	Atoms			ZeroOcc	AltConf
2	A	1	Total	C	O	0	0
			11	6	5		
2	A	1	Total	C	O	0	0
			11	6	5		
2	B	1	Total	C	O	0	0
			11	6	5		
2	B	1	Total	C	O	0	0
			11	6	5		
2	C	1	Total	C	O	0	0
			11	6	5		
2	C	1	Total	C	O	0	0
			11	6	5		

- Molecule 3 is ALPHA-L-FUCOSE (three-letter code: FUC) (formula: $C_6H_{12}O_5$).



Mol	Chain	Residues	Atoms			ZeroOcc	AltConf
3	A	1	Total	C	O	0	0
			10	6	4		
3	B	1	Total	C	O	0	0
			10	6	4		
3	C	1	Total	C	O	0	0
			10	6	4		

- Molecule 4 is N-ACETYL-D-GLUCOSAMINE (three-letter code: NAG) (formula: $C_8H_{15}NO_6$).



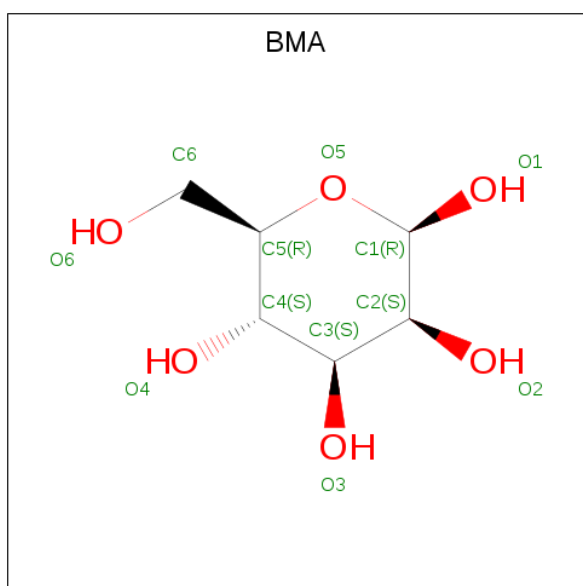
Mol	Chain	Residues	Atoms				ZeroOcc	AltConf
4	A	1	Total	C	N	O	0	0
			14	8	1	5		

Continued on next page...

Continued from previous page...

Mol	Chain	Residues	Atoms				ZeroOcc	AltConf
4	A	1	Total	C	N	O	0	0
			14	8	1	5		
4	B	1	Total	C	N	O	0	0
			14	8	1	5		
4	B	1	Total	C	N	O	0	0
			14	8	1	5		
4	C	1	Total	C	N	O	0	0
			14	8	1	5		
4	C	1	Total	C	N	O	0	0
			14	8	1	5		

- Molecule 5 is BETA-D-MANNOSE (three-letter code: BMA) (formula: $C_6H_{12}O_6$).



Mol	Chain	Residues	Atoms			ZeroOcc	AltConf
5	A	1	Total	C	O	0	0
			11	6	5		
5	B	1	Total	C	O	0	0
			11	6	5		
5	C	1	Total	C	O	0	0
			11	6	5		

- Molecule 6 is SODIUM ION (three-letter code: NA) (formula: Na).

Mol	Chain	Residues	Atoms		ZeroOcc	AltConf
6	A	3	Total	Na	0	0
			3	3		

Continued on next page...

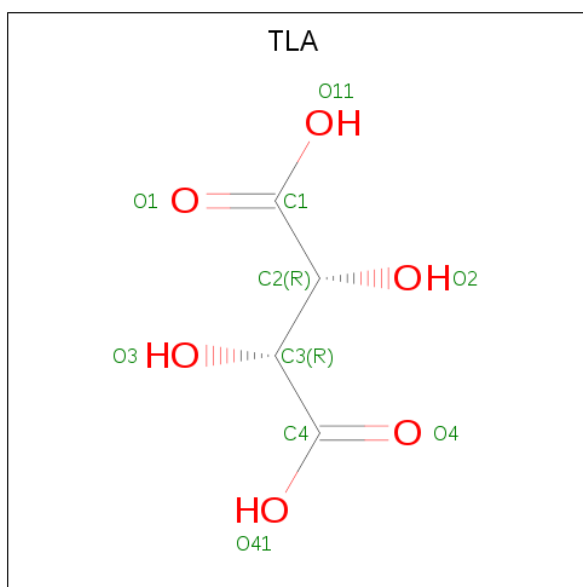
Continued from previous page...

Mol	Chain	Residues	Atoms		ZeroOcc	AltConf
6	C	2	Total	Na	0	0
			2	2		

- Molecule 7 is CHLORIDE ION (three-letter code: CL) (formula: Cl).

Mol	Chain	Residues	Atoms		ZeroOcc	AltConf
7	B	5	Total	Cl	0	0
			5	5		
7	A	4	Total	Cl	0	0
			4	4		
7	C	2	Total	Cl	0	0
			2	2		

- Molecule 8 is L(+)-TARTARIC ACID (three-letter code: TLA) (formula: C₄H₆O₆).



Mol	Chain	Residues	Atoms			ZeroOcc	AltConf
8	A	1	Total	C	O	0	0
			10	4	6		
8	A	1	Total	C	O	0	0
			10	4	6		
8	B	1	Total	C	O	0	0
			10	4	6		

- Molecule 9 is 1,2-ETHANEDIOL (three-letter code: EDO) (formula: C₂H₆O₂).



Mol	Chain	Residues	Atoms			ZeroOcc	AltConf
9	C	1	Total	C	O	0	0
			4	2	2		

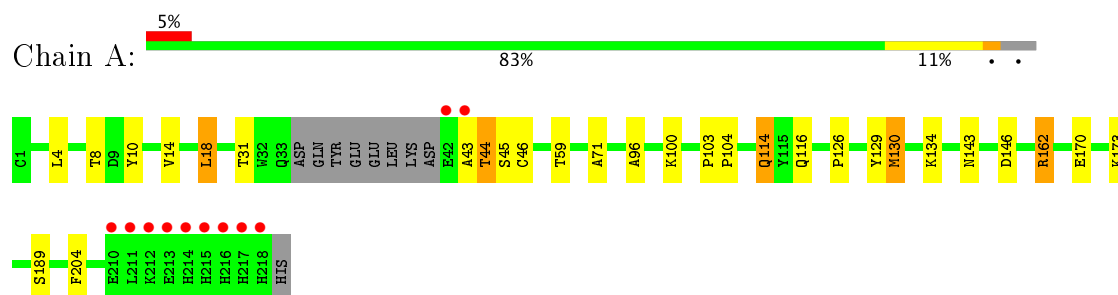
- Molecule 10 is water.

Mol	Chain	Residues	Atoms		ZeroOcc	AltConf
10	A	39	Total	O	0	0
			39	39		
10	B	59	Total	O	0	0
			59	59		
10	C	60	Total	O	0	0
			60	60		

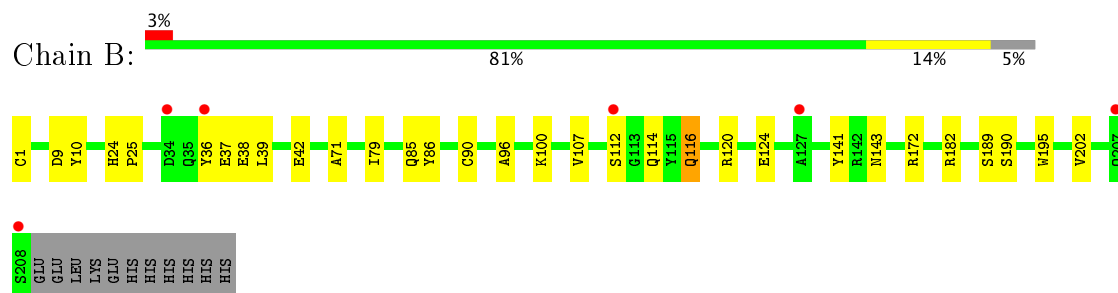
3 Residue-property plots [i](#)

These plots are drawn for all protein, RNA and DNA chains in the entry. The first graphic for a chain summarises the proportions of the various outlier classes displayed in the second graphic. The second graphic shows the sequence view annotated by issues in geometry and electron density. Residues are color-coded according to the number of geometric quality criteria for which they contain at least one outlier: green = 0, yellow = 1, orange = 2 and red = 3 or more. A red dot above a residue indicates a poor fit to the electron density ($RSRZ > 2$). Stretches of 2 or more consecutive residues without any outlier are shown as a green connector. Residues present in the sample, but not in the model, are shown in grey.

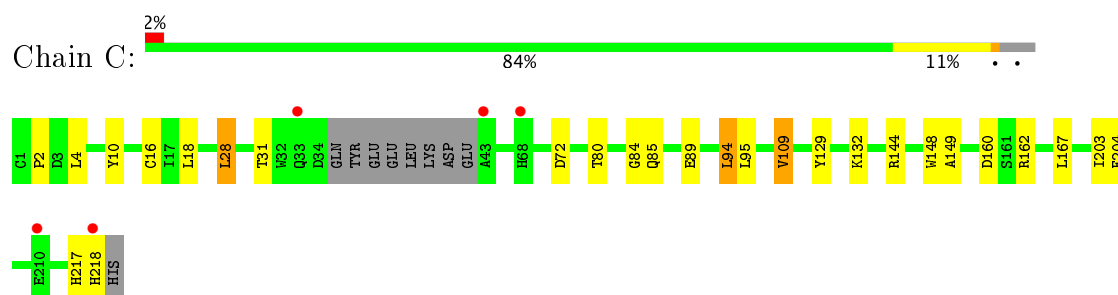
- Molecule 1: Interleukin-21 receptor



- Molecule 1: Interleukin-21 receptor



- Molecule 1: Interleukin-21 receptor



4 Data and refinement statistics

Property	Value	Source
Space group	I 2 2 2	Depositor
Cell constants a, b, c, α , β , γ	114.33Å 125.26Å 178.27Å 90.00° 90.00° 90.00°	Depositor
Resolution (Å)	29.78 – 2.75 29.78 – 2.75	Depositor EDS
% Data completeness (in resolution range)	98.9 (29.78-2.75) 99.0 (29.78-2.75)	Depositor EDS
R_{merge}	(Not available)	Depositor
R_{sym}	(Not available)	Depositor
$\langle I/\sigma(I) \rangle$ ¹	2.83 (at 2.76Å)	Xtriage
Refinement program	PHENIX (phenix.refine: 1.8.2_1309)	Depositor
R, R_{free}	0.239 , 0.275 0.237 , 0.276	Depositor DCC
R_{free} test set	1997 reflections (6.01%)	DCC
Wilson B-factor (Å ²)	59.8	Xtriage
Anisotropy	0.249	Xtriage
Bulk solvent k_{sol} (e/Å ³), B_{sol} (Å ²)	0.34 , 46.6	EDS
L-test for twinning ²	$\langle L \rangle = 0.50$, $\langle L^2 \rangle = 0.33$	Xtriage
Estimated twinning fraction	No twinning to report.	Xtriage
F_o, F_c correlation	0.87	EDS
Total number of atoms	5498	wwPDB-VP
Average B, all atoms (Å ²)	45.0	wwPDB-VP

Xtriage's analysis on translational NCS is as follows: *The largest off-origin peak in the Patterson function is 4.15% of the height of the origin peak. No significant pseudotranslation is detected.*

¹Intensities estimated from amplitudes.

²Theoretical values of $\langle |L| \rangle$, $\langle L^2 \rangle$ for acentric reflections are 0.5, 0.333 respectively for untwinned datasets, and 0.375, 0.2 for perfectly twinned datasets.

5 Model quality [i](#)

5.1 Standard geometry [i](#)

Bond lengths and bond angles in the following residue types are not validated in this section: BMA, NAG, CL, NA, EDO, TLA, FUC, MAN

The Z score for a bond length (or angle) is the number of standard deviations the observed value is removed from the expected value. A bond length (or angle) with $|Z| > 5$ is considered an outlier worth inspection. RMSZ is the root-mean-square of all Z scores of the bond lengths (or angles).

Mol	Chain	Bond lengths		Bond angles	
		RMSZ	# Z >5	RMSZ	# Z >5
1	A	0.29	0/1741	0.51	0/2373
1	B	0.29	0/1736	0.52	0/2365
1	C	0.29	0/1758	0.53	0/2396
All	All	0.29	0/5235	0.52	0/7134

There are no bond length outliers.

There are no bond angle outliers.

There are no chirality outliers.

There are no planarity outliers.

5.2 Too-close contacts [i](#)

In the following table, the Non-H and H(model) columns list the number of non-hydrogen atoms and hydrogen atoms in the chain respectively. The H(added) column lists the number of hydrogen atoms added and optimized by MolProbity. The Clashes column lists the number of clashes within the asymmetric unit, whereas Symm-Clashes lists symmetry related clashes.

Mol	Chain	Non-H	H(model)	H(added)	Clashes	Symm-Clashes
1	A	1689	0	1565	19	0
1	B	1686	0	1577	19	0
1	C	1702	0	1585	19	0
2	A	22	0	20	0	0
2	B	22	0	20	2	0
2	C	22	0	20	3	0
3	A	10	0	10	0	0
3	B	10	0	10	0	0
3	C	10	0	10	0	0
4	A	28	0	23	0	0

Continued on next page...

Continued from previous page...

Mol	Chain	Non-H	H(model)	H(added)	Clashes	Symm-Clashes
4	B	28	0	23	0	0
4	C	28	0	23	1	0
5	A	11	0	9	0	0
5	B	11	0	9	2	0
5	C	11	0	9	1	0
6	A	3	0	0	0	0
6	C	2	0	0	0	0
7	A	4	0	0	0	0
7	B	5	0	0	1	0
7	C	2	0	0	1	0
8	A	20	0	8	2	0
8	B	10	0	4	1	0
9	C	4	0	6	0	0
10	A	39	0	0	4	0
10	B	59	0	0	4	0
10	C	60	0	0	9	0
All	All	5498	0	4931	61	0

The all-atom clashscore is defined as the number of clashes found per 1000 atoms (including hydrogen atoms). The all-atom clashscore for this structure is 6.

All (61) close contacts within the same asymmetric unit are listed below, sorted by their clash magnitude.

Atom-1	Atom-2	Interatomic distance (Å)	Clash overlap (Å)
1:B:141:TYR:OH	10:B:447:HOH:O	1.91	0.88
1:C:89:GLU:OE1	10:C:405:HOH:O	1.94	0.84
1:B:1:CYS:SG	10:B:456:HOH:O	2.40	0.80
2:B:301:MAN:H62	5:B:305:BMA:H61	1.68	0.75
1:A:173:LYS:NZ	10:A:432:HOH:O	2.21	0.72
1:A:43:ALA:HA	1:A:44:THR:HG22	1.71	0.72
2:C:306:MAN:O2	10:C:456:HOH:O	2.12	0.67
1:A:162:ARG:HB3	10:A:425:HOH:O	1.93	0.66
7:C:309:CL:CL	10:C:426:HOH:O	2.52	0.64
1:B:143:ASN:HD22	1:B:172:ARG:HH21	1.47	0.63
1:A:204:PHE:HA	10:A:436:HOH:O	2.00	0.61
1:A:100:LYS:HD3	8:A:314:TLA:H2	1.83	0.61
1:B:36:TYR:O	10:B:446:HOH:O	2.16	0.61
1:C:160:ASP:OD1	1:C:162[B]:ARG:NH2	2.35	0.60
1:C:2:PRO:HG2	1:C:18:LEU:HD11	1.83	0.59
1:C:4:LEU:HD11	1:C:16:CYS:HB3	1.86	0.57
1:B:120:ARG:NH1	1:B:124:GLU:OE1	2.33	0.55

Continued on next page...

Continued from previous page...

Atom-1	Atom-2	Interatomic distance (Å)	Clash overlap (Å)
1:C:85:GLN:NE2	10:C:412:HOH:O	2.41	0.54
1:B:86:TYR:HE2	1:C:162[B]:ARG:NH1	2.06	0.53
1:C:85:GLN:OE1	10:C:428:HOH:O	2.19	0.53
1:A:143:ASN:O	1:A:146:ASP:HB2	2.07	0.53
1:C:109:VAL:HG21	1:C:204:PHE:CD1	2.44	0.53
1:C:144:ARG:NH1	1:C:203:ILE:HD13	2.23	0.52
1:B:143:ASN:HD22	1:B:172:ARG:NH2	2.07	0.51
1:B:86:TYR:HE2	1:C:162[B]:ARG:CZ	2.23	0.51
1:B:107:VAL:O	1:B:202:VAL:HG21	2.12	0.50
1:B:85:GLN:NE2	1:C:132:LYS:HE2	2.27	0.49
1:B:182:ARG:HD2	1:B:195:TRP:HB3	1.96	0.48
1:B:79:ILE:HG13	1:B:90:CYS:SG	2.53	0.48
2:B:301:MAN:C6	5:B:305:BMA:H61	2.41	0.48
1:A:130:MET:SD	1:A:130:MET:N	2.79	0.48
1:A:43:ALA:HB1	1:A:45:SER:N	2.28	0.48
1:B:9:ASP:OD2	8:B:312:TLA:O3	2.33	0.47
1:C:4:LEU:HD13	1:C:18:LEU:HD13	1.97	0.47
1:C:148:TRP:N	10:C:409:HOH:O	2.41	0.46
1:C:80:THR:CG2	1:C:84:GLY:HA2	2.46	0.46
1:B:24:HIS:CG	1:B:25:PRO:HA	2.52	0.45
5:C:305:BMA:H62	2:C:306:MAN:H5	1.97	0.45
1:A:170:GLU:OE1	10:A:407:HOH:O	2.20	0.45
1:C:217:HIS:O	1:C:218:HIS:HB2	2.16	0.45
1:B:100:LYS:HE3	7:B:310:CL:CL	2.54	0.45
1:C:129:TYR:HA	1:C:132:LYS:HG3	1.99	0.45
1:A:134:LYS:HD2	1:A:189:SER:HB2	1.99	0.44
1:C:72:ASP:HA	1:C:94:LEU:HD21	2.00	0.44
1:A:100:LYS:O	8:A:314:TLA:O2	2.32	0.43
1:A:43:ALA:HB1	1:A:45:SER:HB2	1.99	0.43
1:A:103:PRO:HA	1:A:104:PRO:HD3	1.92	0.43
1:A:114:GLN:HB3	1:A:114:GLN:HE21	1.54	0.43
2:C:301:MAN:H62	10:C:445:HOH:O	2.17	0.42
1:C:149:ALA:O	10:C:451:HOH:O	2.22	0.42
1:A:114:GLN:HG2	1:A:116:GLN:NE2	2.34	0.42
1:B:112:SER:C	1:B:114:GLN:H	2.22	0.42
1:A:126:PRO:HA	1:A:129:TYR:CE1	2.55	0.41
1:B:116:GLN:O	10:B:405:HOH:O	2.22	0.41
1:C:28:LEU:HA	1:C:28:LEU:HD23	1.83	0.41
1:B:71:ALA:HB1	1:B:96:ALA:HB2	2.02	0.41
1:A:71:ALA:HB1	1:A:96:ALA:HB2	2.03	0.41
4:C:303:NAG:H82	10:C:421:HOH:O	2.20	0.41

Continued on next page...

Continued from previous page...

Atom-1	Atom-2	Interatomic distance (Å)	Clash overlap (Å)
1:A:4:LEU:HD13	1:A:18:LEU:HB3	2.03	0.40
1:A:8:THR:HB	1:A:14:VAL:HG22	2.03	0.40
1:B:189:SER:O	1:B:190:SER:OG	2.32	0.40

There are no symmetry-related clashes.

5.3 Torsion angles [i](#)

5.3.1 Protein backbone [i](#)

In the following table, the Percentiles column shows the percent Ramachandran outliers of the chain as a percentile score with respect to all X-ray entries followed by that with respect to entries of similar resolution.

The Analysed column shows the number of residues for which the backbone conformation was analysed, and the total number of residues.

Mol	Chain	Analysed	Favoured	Allowed	Outliers	Percentiles	
1	A	206/219 (94%)	197 (96%)	9 (4%)	0	100	100
1	B	206/219 (94%)	195 (95%)	10 (5%)	1 (0%)	32	64
1	C	207/219 (94%)	197 (95%)	10 (5%)	0	100	100
All	All	619/657 (94%)	589 (95%)	29 (5%)	1 (0%)	51	81

All (1) Ramachandran outliers are listed below:

Mol	Chain	Res	Type
1	B	37	GLU

5.3.2 Protein sidechains [i](#)

In the following table, the Percentiles column shows the percent sidechain outliers of the chain as a percentile score with respect to all X-ray entries followed by that with respect to entries of similar resolution.

The Analysed column shows the number of residues for which the sidechain conformation was analysed, and the total number of residues.

Mol	Chain	Analysed	Rotameric	Outliers	Percentiles	
1	A	187/201 (93%)	178 (95%)	9 (5%)	30	60

Continued on next page...

Continued from previous page...

Mol	Chain	Analysed	Rotameric	Outliers	Percentiles	
1	B	190/201 (94%)	185 (97%)	5 (3%)	51	81
1	C	189/201 (94%)	182 (96%)	7 (4%)	39	71
All	All	566/603 (94%)	545 (96%)	21 (4%)	39	71

All (21) residues with a non-rotameric sidechain are listed below:

Mol	Chain	Res	Type
1	A	10	TYR
1	A	18	LEU
1	A	31	THR
1	A	44	THR
1	A	46	CYS
1	A	59	THR
1	A	114	GLN
1	A	130	MET
1	A	162	ARG
1	B	10	TYR
1	B	38	GLU
1	B	39	LEU
1	B	42	GLU
1	B	116	GLN
1	C	10	TYR
1	C	28	LEU
1	C	31	THR
1	C	94	LEU
1	C	95	LEU
1	C	109	VAL
1	C	167	LEU

Some sidechains can be flipped to improve hydrogen bonding and reduce clashes. All (1) such sidechains are listed below:

Mol	Chain	Res	Type
1	B	143	ASN

5.3.3 RNA ⓘ

There are no RNA molecules in this entry.

5.4 Non-standard residues in protein, DNA, RNA chains ⓘ

There are no non-standard protein/DNA/RNA residues in this entry.

5.5 Carbohydrates ⓘ

There are no carbohydrates in this entry.

5.6 Ligand geometry ⓘ

Of 38 ligands modelled in this entry, 16 are monoatomic - leaving 22 for Mogul analysis.

In the following table, the Counts columns list the number of bonds (or angles) for which Mogul statistics could be retrieved, the number of bonds (or angles) that are observed in the model and the number of bonds (or angles) that are defined in the Chemical Component Dictionary. The Link column lists molecule types, if any, to which the group is linked. The Z score for a bond length (or angle) is the number of standard deviations the observed value is removed from the expected value. A bond length (or angle) with $|Z| > 2$ is considered an outlier worth inspection. RMSZ is the root-mean-square of all Z scores of the bond lengths (or angles).

Mol	Type	Chain	Res	Link	Bond lengths			Bond angles		
					Counts	RMSZ	# $ Z > 2$	Counts	RMSZ	# $ Z > 2$
2	MAN	A	301	-	11,11,12	1.05	1 (9%)	13,15,17	1.17	1 (7%)
3	FUC	A	302	4	9,10,11	1.23	1 (11%)	13,14,16	1.03	1 (7%)
4	NAG	A	303	1,3,4	14,14,15	0.33	0	15,19,21	0.92	1 (6%)
4	NAG	A	304	5,4	14,14,15	0.37	0	15,19,21	0.89	1 (6%)
5	BMA	A	305	2,4	11,11,12	1.07	1 (9%)	13,15,17	1.45	1 (7%)
2	MAN	A	306	5	11,11,12	0.72	0	13,15,17	1.43	2 (15%)
8	TLA	A	314	-	3,9,9	0.59	0	6,12,12	0.90	0
8	TLA	A	315	-	3,9,9	0.38	0	6,12,12	0.79	0
2	MAN	B	301	-	11,11,12	1.36	1 (9%)	13,15,17	1.12	1 (7%)
3	FUC	B	302	4	9,10,11	1.04	0	13,14,16	0.94	1 (7%)
4	NAG	B	303	1,3,4	14,14,15	0.31	0	15,19,21	0.50	0
4	NAG	B	304	5,4	14,14,15	0.41	0	15,19,21	0.68	0
5	BMA	B	305	2,4	11,11,12	0.70	0	13,15,17	1.30	3 (23%)
2	MAN	B	306	5	11,11,12	0.80	0	13,15,17	1.12	1 (7%)
8	TLA	B	312	-	3,9,9	0.53	0	6,12,12	0.97	0
2	MAN	C	301	-	11,11,12	0.79	0	13,15,17	1.11	2 (15%)
3	FUC	C	302	4	9,10,11	1.27	1 (11%)	13,14,16	1.27	3 (23%)
4	NAG	C	303	1,3,4	14,14,15	0.55	0	15,19,21	0.98	1 (6%)
4	NAG	C	304	5,4	14,14,15	0.25	0	15,19,21	0.54	0

Mol	Type	Chain	Res	Link	Bond lengths			Bond angles		
					Counts	RMSZ	# Z > 2	Counts	RMSZ	# Z > 2
5	BMA	C	305	2,4	11,11,12	0.93	1 (9%)	13,15,17	1.14	1 (7%)
2	MAN	C	306	5	11,11,12	1.30	2 (18%)	13,15,17	2.06	4 (30%)
9	EDO	C	311	-	3,3,3	0.59	0	2,2,2	0.87	0

In the following table, the Chirals column lists the number of chiral outliers, the number of chiral centers analysed, the number of these observed in the model and the number defined in the Chemical Component Dictionary. Similar counts are reported in the Torsion and Rings columns. '-' means no outliers of that kind were identified.

Mol	Type	Chain	Res	Link	Chirals	Torsions	Rings
2	MAN	A	301	-	-	0/2/19/22	0/1/1/1
3	FUC	A	302	4	1/1/4/5	0/0/17/20	0/1/1/1
4	NAG	A	303	1,3,4	-	0/6/23/26	0/1/1/1
4	NAG	A	304	5,4	-	0/6/23/26	0/1/1/1
5	BMA	A	305	2,4	-	0/2/19/22	1/1/1/1
2	MAN	A	306	5	-	0/2/19/22	0/1/1/1
8	TLA	A	314	-	-	0/4/12/12	0/0/0/0
8	TLA	A	315	-	-	0/4/12/12	0/0/0/0
2	MAN	B	301	-	-	0/2/19/22	0/1/1/1
3	FUC	B	302	4	1/1/4/5	0/0/17/20	0/1/1/1
4	NAG	B	303	1,3,4	-	0/6/23/26	0/1/1/1
4	NAG	B	304	5,4	-	0/6/23/26	0/1/1/1
5	BMA	B	305	2,4	-	0/2/19/22	0/1/1/1
2	MAN	B	306	5	-	0/2/19/22	1/1/1/1
8	TLA	B	312	-	-	0/4/12/12	0/0/0/0
2	MAN	C	301	-	-	0/2/19/22	0/1/1/1
3	FUC	C	302	4	1/1/4/5	0/0/17/20	0/1/1/1
4	NAG	C	303	1,3,4	-	0/6/23/26	0/1/1/1
4	NAG	C	304	5,4	-	0/6/23/26	0/1/1/1
5	BMA	C	305	2,4	-	0/2/19/22	0/1/1/1
2	MAN	C	306	5	-	0/2/19/22	0/1/1/1
9	EDO	C	311	-	-	0/1/1/1	0/0/0/0

All (8) bond length outliers are listed below:

Mol	Chain	Res	Type	Atoms	Z	Observed(Å)	Ideal(Å)
2	B	301	MAN	O5-C1	-3.64	1.37	1.43
3	A	302	FUC	O5-C1	-2.90	1.39	1.43
2	A	301	MAN	O5-C1	-2.07	1.40	1.43
3	C	302	FUC	C2-C3	2.25	1.55	1.52
5	C	305	BMA	O5-C5	2.35	1.48	1.43
2	C	306	MAN	C1-C2	2.56	1.58	1.52

Continued on next page...

Continued from previous page...

Mol	Chain	Res	Type	Atoms	Z	Observed(Å)	Ideal(Å)
5	A	305	BMA	O5-C5	2.59	1.48	1.43
2	C	306	MAN	C2-C3	3.07	1.56	1.52

All (24) bond angle outliers are listed below:

Mol	Chain	Res	Type	Atoms	Z	Observed(°)	Ideal(°)
2	B	301	MAN	O2-C2-C3	-2.53	105.20	110.17
2	A	306	MAN	O2-C2-C3	-2.40	105.45	110.17
2	C	301	MAN	O2-C2-C3	-2.32	105.62	110.17
5	B	305	BMA	C1-C2-C3	-2.27	106.78	109.65
2	A	301	MAN	O2-C2-C3	-2.26	105.74	110.17
2	B	306	MAN	O2-C2-C3	-2.09	106.07	110.17
5	B	305	BMA	O2-C2-C3	-2.01	106.23	110.17
3	C	302	FUC	O2-C2-C1	2.09	113.42	109.18
3	A	302	FUC	O2-C2-C1	2.13	113.50	109.18
4	A	304	NAG	O4-C4-C3	2.14	115.01	110.36
5	C	305	BMA	C1-O5-C5	2.23	115.24	112.17
4	A	303	NAG	C1-O5-C5	2.23	115.25	112.17
3	B	302	FUC	O2-C2-C1	2.25	113.75	109.18
2	C	306	MAN	C2-C3-C4	2.30	114.88	110.88
3	C	302	FUC	C1-O5-C5	2.39	117.69	112.39
3	C	302	FUC	O5-C5-C4	2.56	113.84	109.62
4	C	303	NAG	C1-O5-C5	2.60	115.75	112.17
2	C	301	MAN	C1-O5-C5	2.63	115.79	112.17
5	B	305	BMA	C1-O5-C5	2.88	116.13	112.17
2	C	306	MAN	O5-C1-C2	3.09	115.63	110.79
2	A	306	MAN	C1-O5-C5	3.67	117.22	112.17
2	C	306	MAN	C1-O5-C5	3.85	117.48	112.17
5	A	305	BMA	C1-O5-C5	4.26	118.03	112.17
2	C	306	MAN	C1-C2-C3	4.38	115.20	109.65

All (3) chirality outliers are listed below:

Mol	Chain	Res	Type	Atom
3	C	302	FUC	C1
3	A	302	FUC	C1
3	B	302	FUC	C1

There are no torsion outliers.

All (2) ring outliers are listed below:

Mol	Chain	Res	Type	Atoms
5	A	305	BMA	C1-C2-C3-C4-C5-O5
2	B	306	MAN	C1-C2-C3-C4-C5-O5

8 monomers are involved in 9 short contacts:

Mol	Chain	Res	Type	Clashes	Symm-Clashes
8	A	314	TLA	2	0
2	B	301	MAN	2	0
5	B	305	BMA	2	0
8	B	312	TLA	1	0
2	C	301	MAN	1	0
4	C	303	NAG	1	0
5	C	305	BMA	1	0
2	C	306	MAN	2	0

5.7 Other polymers [i](#)

There are no such residues in this entry.

5.8 Polymer linkage issues [i](#)

There are no chain breaks in this entry.

6 Fit of model and data

6.1 Protein, DNA and RNA chains

In the following table, the column labelled ‘#RSRZ> 2’ contains the number (and percentage) of RSRZ outliers, followed by percent RSRZ outliers for the chain as percentile scores relative to all X-ray entries and entries of similar resolution. The OWAB column contains the minimum, median, 95th percentile and maximum values of the occupancy-weighted average B-factor per residue. The column labelled ‘Q< 0.9’ lists the number of (and percentage) of residues with an average occupancy less than 0.9.

Mol	Chain	Analysed	<RSRZ>	#RSRZ>2	OWAB(Å ²)	Q<0.9
1	A	210/219 (95%)	0.06	11 (5%) 28 22	24, 41, 72, 103	0
1	B	208/219 (94%)	0.00	6 (2%) 52 46	23, 41, 71, 92	0
1	C	210/219 (95%)	-0.02	5 (2%) 59 54	23, 41, 71, 90	0
All	All	628/657 (95%)	0.02	22 (3%) 44 38	23, 41, 72, 103	0

All (22) RSRZ outliers are listed below:

Mol	Chain	Res	Type	RSRZ
1	A	216	HIS	5.3
1	A	43	ALA	4.0
1	A	213	GLU	3.9
1	A	42	GLU	3.9
1	C	210	GLU	3.4
1	A	215	HIS	3.3
1	B	36	TYR	3.3
1	A	214	HIS	3.2
1	A	210	GLU	3.1
1	A	217	HIS	2.8
1	A	212	LYS	2.6
1	C	43	ALA	2.5
1	A	211	LEU	2.5
1	B	208	SER	2.5
1	B	127	ALA	2.4
1	B	207	GLN	2.3
1	B	112	SER	2.2
1	C	68	HIS	2.1
1	C	218	HIS	2.1
1	C	33	GLN	2.0
1	A	218	HIS	2.0
1	B	34	ASP	2.0

6.2 Non-standard residues in protein, DNA, RNA chains [i](#)

There are no non-standard protein/DNA/RNA residues in this entry.

6.3 Carbohydrates [i](#)

There are no carbohydrates in this entry.

6.4 Ligands [i](#)

In the following table, the Atoms column lists the number of modelled atoms in the group and the number defined in the chemical component dictionary. LLDF column lists the quality of electron density of the group with respect to its neighbouring residues in protein, DNA or RNA chains. The B-factors column lists the minimum, median, 95th percentile and maximum values of B factors of atoms in the group. The column labelled 'Q< 0.9' lists the number of atoms with occupancy less than 0.9.

Mol	Type	Chain	Res	Atoms	RSCC	RSR	LLDF	B-factors(Å ²)	Q<0.9
6	NA	A	307	1/1	0.76	0.62	18.38	55,55,55,55	0
3	FUC	A	302	10/11	0.79	0.38	16.15	63,72,97,99	0
8	TLA	A	314	10/10	0.89	0.34	10.98	50,59,70,72	0
8	TLA	A	315	10/10	0.85	0.37	8.20	49,67,75,78	0
8	TLA	B	312	10/10	0.74	0.33	5.70	42,71,81,82	0
3	FUC	B	302	10/11	0.83	0.25	4.05	40,56,69,76	0
7	CL	A	313	1/1	0.85	0.24	1.96	75,75,75,75	0
3	FUC	C	302	10/11	0.88	0.20	1.70	49,73,86,97	0
7	CL	A	311	1/1	0.87	0.17	0.63	68,68,68,68	0
7	CL	B	308	1/1	0.89	0.16	-0.04	72,72,72,72	0
7	CL	B	311	1/1	0.88	0.19	-0.09	68,68,68,68	0
2	MAN	A	301	11/12	0.94	0.13	-	39,47,52,65	0
4	NAG	B	304	14/15	0.95	0.17	-	32,41,49,56	0
4	NAG	A	304	14/15	0.91	0.22	-	46,56,76,82	0
4	NAG	C	303	14/15	0.94	0.14	-	33,43,59,65	0
5	BMA	A	305	11/12	0.85	0.25	-	67,75,91,92	0
7	CL	B	307	1/1	0.76	0.27	-	63,63,63,63	0
2	MAN	B	306	11/12	0.65	0.36	-	58,84,101,102	0
7	CL	C	309	1/1	0.98	0.17	-	53,53,53,53	0
2	MAN	C	301	11/12	0.96	0.12	-	37,39,52,52	0
9	EDO	C	311	4/4	0.86	0.35	-	45,50,52,63	0
2	MAN	C	306	11/12	0.73	0.40	-	75,88,101,106	0
2	MAN	A	306	11/12	0.56	0.31	-	60,99,105,110	0
5	BMA	C	305	11/12	0.81	0.32	-	63,78,87,88	0
7	CL	B	309	1/1	0.93	0.09	-	65,65,65,65	0

Continued on next page...

Continued from previous page...

Mol	Type	Chain	Res	Atoms	RSCC	RSR	LLDF	B-factors(\AA^2)	Q<0.9
6	NA	C	307	1/1	0.87	0.20	-	43,43,43,43	0
7	CL	A	310	1/1	0.82	0.23	-	60,60,60,60	0
6	NA	C	308	1/1	0.71	0.14	-	50,50,50,50	0
7	CL	C	310	1/1	0.81	0.30	-	68,68,68,68	0
6	NA	A	309	1/1	0.81	0.20	-	40,40,40,40	0
4	NAG	C	304	14/15	0.93	0.26	-	38,57,68,69	0
6	NA	A	308	1/1	0.73	0.17	-	50,50,50,50	0
7	CL	A	312	1/1	0.67	0.21	-	79,79,79,79	0
2	MAN	B	301	11/12	0.94	0.19	-	29,38,45,46	0
4	NAG	A	303	14/15	0.94	0.18	-	40,47,61,78	0
4	NAG	B	303	14/15	0.92	0.16	-	27,46,50,53	0
5	BMA	B	305	11/12	0.92	0.25	-	46,65,81,83	0
7	CL	B	310	1/1	0.72	0.24	-	78,78,78,78	0

6.5 Other polymers [i](#)

There are no such residues in this entry.