



Full wwPDB NMR Structure Validation Report ⓘ

Feb 13, 2017 – 01:55 am GMT

PDB ID : 2O1Y
Title : Solution structure of the anti-apoptotic protein Bcl-xL in complex with an acyl-sulfonamide-based ligand
Authors : Bruncko, M.; Oost, T.K.; Belli, B.A.; Ding, H.; Joseph, M.K.; Kunzer, A.; Martineau, D.; McClellan, W.J.; Mitten, M.; Ng, S.C.; Nimmer, P.M.; Oltersdorf, T.; Park, C.M.; Petros, A.M.; Shoemaker, A.R.; Song, X.; Wang, X.; Wendt, M.D.; Zhang, H.; Fesik, S.W.; Rosenberg, S.H.; Elmore, S.W.
Deposited on : 2006-11-29

This is a Full wwPDB NMR Structure Validation Report for a publicly released PDB entry.

We welcome your comments at validation@mail.wwpdb.org

A user guide is available at

<http://wwpdb.org/validation/2016/NMRValidationReportHelp>

with specific help available everywhere you see the ⓘ symbol.

The following versions of software and data (see [references ⓘ](#)) were used in the production of this report:

Cyrange	:	Kirchner and Güntert (2011)
NmrClust	:	Kelley et al. (1996)
MolProbity	:	4.02b-467
Mogul	:	1.7.2 (RC1), CSD as538be (2017)
Percentile statistics	:	20161228.v01 (using entries in the PDB archive December 28th 2016)
RCI	:	v_1n_11_5_13_A (Berjanski et al., 2005)
PANAV	:	Wang et al. (2010)
ShiftChecker	:	trunk28760
Ideal geometry (proteins)	:	Engh & Huber (2001)
Ideal geometry (DNA, RNA)	:	Parkinson et al. (1996)
Validation Pipeline (wwPDB-VP)	:	recalc28949

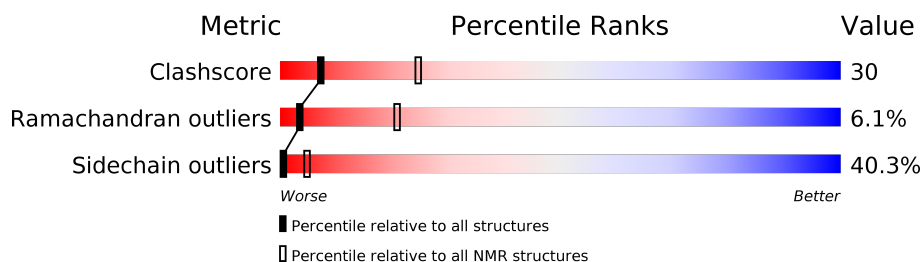
1 Overall quality at a glance

The following experimental techniques were used to determine the structure:

SOLUTION NMR

The overall completeness of chemical shifts assignment was not calculated.

Percentile scores (ranging between 0-100) for global validation metrics of the entry are shown in the following graphic. The table shows the number of entries on which the scores are based.



Metric	Whole archive (#Entries)	NMR archive (#Entries)
Clashscore	125131	11601
Ramachandran outliers	121729	10391
Sidechain outliers	121581	10367

The table below summarises the geometric issues observed across the polymeric chains and their fit to the experimental data. The red, orange, yellow and green segments indicate the fraction of residues that contain outliers for ≥ 3 , 2, 1 and 0 types of geometric quality criteria. A cyan segment indicates the fraction of residues that are not part of the well-defined cores, and a grey segment represents the fraction of residues that are not modelled. The numeric value for each fraction is indicated below the corresponding segment, with a dot representing fractions $\leq 5\%$

Mol	Chain	Length	Quality of chain
1	A	181	<div> <div></div> <div>35%</div> <div>44%</div> <div>19%</div> <div>.</div> </div>

2 Ensemble composition and analysis ⓘ

This entry contains 1 models. Identification of well-defined residues and clustering analysis are not possible.

3 Entry composition

There are 2 unique types of molecules in this entry. The entry contains 2913 atoms, of which 1398 are hydrogens and 0 are deuteriums.

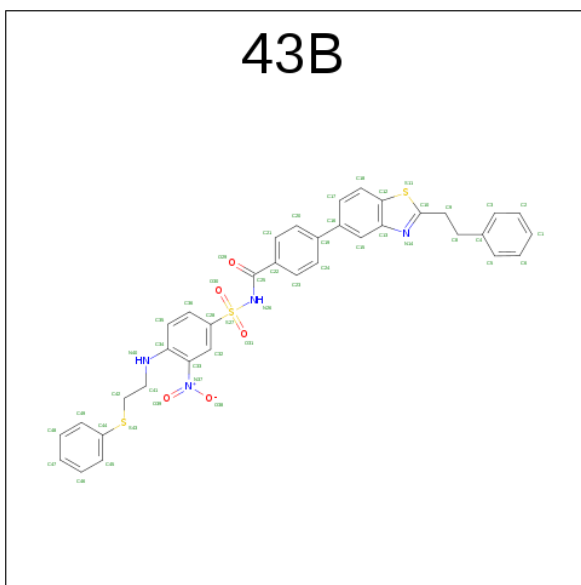
- Molecule 1 is a protein called Apoptosis regulator Bcl-X.

Mol	Chain	Residues	Atoms						Trace
1	A	181	Total	C	H	N	O	S	0
			2835	918	1368	258	285	6	

There are 12 discrepancies between the modelled and reference sequences:

Chain	Residue	Modelled	Actual	Comment	Reference
A	1	MET	-	CLONING ARTIFACT	UNP Q07817
A	2	SER	-	CLONING ARTIFACT	UNP Q07817
A	3	MET	-	CLONING ARTIFACT	UNP Q07817
A	4	ALA	-	CLONING ARTIFACT	UNP Q07817
A	214	LEU	-	CLONING ARTIFACT	UNP Q07817
A	215	GLU	-	CLONING ARTIFACT	UNP Q07817
A	216	HIS	-	EXPRESSION TAG	UNP Q07817
A	217	HIS	-	EXPRESSION TAG	UNP Q07817
A	218	HIS	-	EXPRESSION TAG	UNP Q07817
A	219	HIS	-	EXPRESSION TAG	UNP Q07817
A	220	HIS	-	EXPRESSION TAG	UNP Q07817
A	221	HIS	-	EXPRESSION TAG	UNP Q07817

- Molecule 2 is 3-NITRO-N-{4-[2-(2-PHENYLETHYL)-1,3-BENZOTHAZOL-5-YL]BENZAMIDE}-4-{[2-(PHENYLSULFANYL)ETHYL]AMINO}BENZENESULFONAMIDE (three-letter code: 43B) (formula: C₃₆H₃₀N₄O₅S₃).

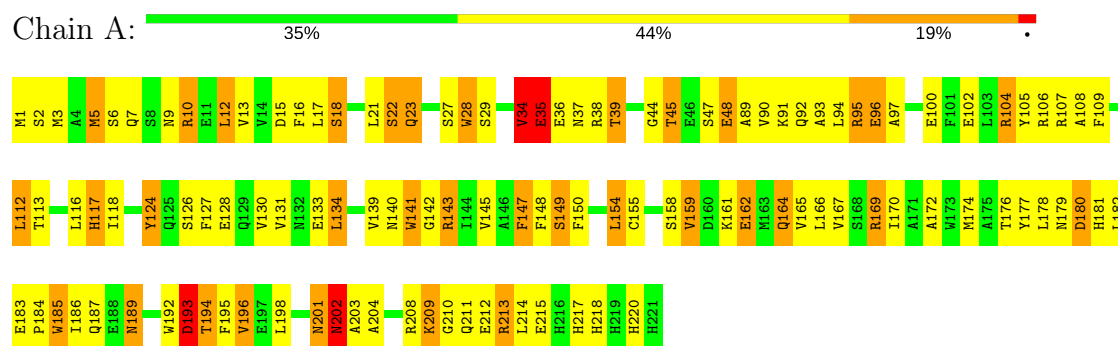


Mol	Chain	Residues	Atoms					
2	A	1	Total	C	H	N	O	S
			78	36	30	4	5	3

4 Residue-property plots [i](#)

These plots are provided for all protein, RNA and DNA chains in the entry. The first graphic is the same as shown in the summary in section 1 of this report. The second graphic shows the sequence where residues are colour-coded according to the number of geometric quality criteria for which they contain at least one outlier: green = 0, yellow = 1, orange = 2 and red = 3 or more. Stretches of 2 or more consecutive residues without any outliers are shown as green connectors. Residues which are classified as ill-defined in the NMR ensemble, are shown in cyan with an underline colour-coded according to the previous scheme. Residues which were present in the experimental sample, but not modelled in the final structure are shown in grey.

- Molecule 1: Apoptosis regulator Bcl-X



5 Refinement protocol and experimental data overview ⓘ

The models were refined using the following method: *simulated annealing*.

Of the ? calculated structures, 1 were deposited, based on the following criterion: ?.

The following table shows the software used for structure solution, optimisation and refinement.

Software name	Classification	Version
CNS	refinement	

No chemical shift data was provided. No validations of the models with respect to experimental NMR restraints is performed at this time.

6 Model quality [i](#)

6.1 Standard geometry [i](#)

Bond lengths and bond angles in the following residue types are not validated in this section: 43B

The Z score for a bond length (or angle) is the number of standard deviations the observed value is removed from the expected value. A bond length (or angle) with $|Z| > 5$ is considered an outlier worth inspection. RMSZ is the (average) root-mean-square of all Z scores of the bond lengths (or angles).

Mol	Chain	Bond lengths		Bond angles	
		RMSZ	#Z>5	RMSZ	#Z>5
1	A	0.38	2/1503 (0.1%)	0.37	2/2030 (0.1%)
All	All	0.38	2/1503 (0.1%)	0.37	2/2030 (0.1%)

All bond outliers are listed below. They are sorted according to the Z-score.

Mol	Chain	Res	Type	Atoms	Z	Observed(Å)	Ideal(Å)
1	A	162	GLU	CD-OE2	9.97	1.36	1.25
1	A	193	ASP	CG-OD2	5.12	1.37	1.25

All angle outliers are listed below. They are sorted according to the Z-score.

Mol	Chain	Res	Type	Atoms	Z	Observed(°)	Ideal(°)
1	A	193	ASP	CB-CG-OD2	-6.11	112.80	118.30
1	A	193	ASP	CB-CG-OD1	5.24	123.01	118.30

There are no chirality outliers.

There are no planarity outliers.

6.2 Too-close contacts [i](#)

In the following table, the Non-H and H(model) columns list the number of non-hydrogen atoms and hydrogen atoms in each chain respectively. The H(added) column lists the number of hydrogen atoms added and optimized by MolProbity. The Clashes column lists the number of clashes averaged over the ensemble.

Mol	Chain	Non-H	H(model)	H(added)	Clashes
1	A	1467	1368	1366	86
2	A	48	30	30	16
All	All	1515	1398	1396	86

The all-atom clashscore is defined as the number of clashes found per 1000 atoms (including hydrogen atoms). The all-atom clashscore for this structure is 30.

All clashes are listed below, sorted by their clash magnitude.

Atom-1	Atom-2	Clash(Å)	Distance(Å)
1:A:105:TYR:HB3	1:A:108:ALA:HB3	0.75	1.58
1:A:105:TYR:CE2	2:A:1000:43B:HJ2	0.74	2.17
1:A:116:LEU:HD12	1:A:117:HIS:N	0.73	1.98
1:A:100:GLU:CG	2:A:1000:43B:HO1	0.67	2.19
1:A:90:VAL:HG12	1:A:91:LYS:N	0.64	2.07
1:A:89:ALA:HA	1:A:196:VAL:HG11	0.61	1.69
1:A:12:LEU:N	1:A:12:LEU:HD23	0.60	2.10
1:A:97:ALA:CB	1:A:145:VAL:HG11	0.58	2.28
1:A:155:CYS:O	1:A:159:VAL:HG22	0.58	1.99
1:A:93:ALA:HB2	1:A:196:VAL:HG13	0.57	1.75
1:A:100:GLU:HG3	2:A:1000:43B:HO1	0.56	1.76
1:A:220:HIS:CD2	1:A:220:HIS:O	0.56	2.59
1:A:127:PHE:O	1:A:131:VAL:HG13	0.54	2.02
1:A:105:TYR:CD2	2:A:1000:43B:HP1	0.53	2.39
1:A:142:GLY:O	2:A:1000:43B:HR	0.53	2.04
1:A:112:LEU:HD21	2:A:1000:43B:HC2	0.53	1.81
1:A:104:ARG:HG3	2:A:1000:43B:S43	0.52	2.44
1:A:131:VAL:CG2	1:A:177:TYR:CZ	0.52	2.92
1:A:143:ARG:NE	2:A:1000:43B:HI1	0.51	2.20
1:A:166:LEU:O	1:A:169:ARG:N	0.51	2.43
1:A:189:ASN:N	1:A:189:ASN:OD1	0.51	2.43
1:A:112:LEU:HD23	2:A:1000:43B:S11	0.51	2.45
1:A:164:GLN:NE2	1:A:165:VAL:N	0.50	2.59
1:A:48:GLU:CG	1:A:48:GLU:O	0.50	2.58
1:A:116:LEU:HD12	1:A:116:LEU:C	0.50	2.27
1:A:210:GLY:O	1:A:213:ARG:N	0.50	2.45
1:A:90:VAL:CG1	1:A:91:LYS:N	0.50	2.73
1:A:131:VAL:CG2	1:A:177:TYR:CE1	0.50	2.95
1:A:12:LEU:N	1:A:12:LEU:CD2	0.49	2.76
1:A:112:LEU:CD2	2:A:1000:43B:HC2	0.49	2.37
1:A:183:GLU:CB	1:A:184:PRO:HD3	0.49	2.38
1:A:105:TYR:CE2	2:A:1000:43B:HP1	0.49	2.43
1:A:192:TRP:O	1:A:195:PHE:N	0.49	2.46
1:A:201:ASN:O	1:A:204:ALA:N	0.49	2.46
1:A:150:PHE:CE1	1:A:154:LEU:HD21	0.48	2.43
1:A:112:LEU:CD2	2:A:1000:43B:S11	0.48	3.02
1:A:143:ARG:CZ	2:A:1000:43B:HI1	0.48	2.38
1:A:131:VAL:HG22	1:A:177:TYR:CZ	0.48	2.44
1:A:28:TRP:CZ3	1:A:164:GLN:HG2	0.48	2.44

Continued on next page...

Continued from previous page...

Atom-1	Atom-2	Clash(Å)	Distance(Å)
1:A:182:LEU:O	1:A:185:TRP:N	0.48	2.47
1:A:9:ASN:OD1	1:A:10:ARG:N	0.47	2.46
1:A:192:TRP:O	1:A:194:THR:N	0.47	2.47
1:A:127:PHE:O	1:A:131:VAL:CG1	0.47	2.63
1:A:44:GLY:O	1:A:45:THR:O	0.46	2.33
1:A:140:ASN:O	1:A:141:TRP:C	0.46	2.54
1:A:130:VAL:CG2	1:A:131:VAL:N	0.46	2.79
1:A:154:LEU:CB	1:A:170:ILE:HD12	0.46	2.41
1:A:23:GLN:O	1:A:23:GLN:OE1	0.46	2.33
1:A:169:ARG:O	1:A:172:ALA:N	0.45	2.50
1:A:134:LEU:HD12	2:A:1000:43B:C15	0.45	2.42
1:A:18:SER:O	1:A:22:SER:OG	0.45	2.34
1:A:118:ILE:HB	1:A:154:LEU:HD12	0.44	1.89
1:A:48:GLU:HG2	1:A:48:GLU:O	0.44	2.13
1:A:186:ILE:HA	1:A:189:ASN:OD1	0.44	2.13
1:A:201:ASN:O	1:A:203:ALA:N	0.44	2.51
1:A:166:LEU:O	1:A:167:VAL:C	0.43	2.56
1:A:105:TYR:CE2	2:A:1000:43B:C23	0.43	2.98
1:A:180:ASP:CG	1:A:180:ASP:O	0.43	2.56
1:A:178:LEU:HD23	1:A:182:LEU:HD13	0.43	1.89
1:A:147:PHE:O	1:A:148:PHE:C	0.43	2.57
1:A:201:ASN:O	1:A:202:ASN:C	0.43	2.57
1:A:139:VAL:HB	1:A:185:TRP:CE2	0.43	2.48
1:A:177:TYR:CZ	1:A:181:HIS:CD2	0.43	3.07
1:A:97:ALA:HB1	1:A:145:VAL:HG11	0.43	1.90
1:A:149:SER:O	1:A:150:PHE:C	0.43	2.57
1:A:208:ARG:O	1:A:209:LYS:C	0.43	2.57
1:A:133:GLU:CB	2:A:1000:43B:C3	0.43	2.97
1:A:13:VAL:O	1:A:17:LEU:HG	0.43	2.14
1:A:145:VAL:HG21	1:A:195:PHE:CZ	0.43	2.49
1:A:127:PHE:CE1	1:A:131:VAL:CG1	0.42	3.02
1:A:186:ILE:C	1:A:189:ASN:OD1	0.42	2.57
1:A:131:VAL:HG21	1:A:177:TYR:CE1	0.42	2.50
1:A:124:TYR:C	1:A:124:TYR:CD1	0.42	2.91
1:A:147:PHE:O	1:A:150:PHE:HB3	0.42	2.15
1:A:130:VAL:HG23	1:A:131:VAL:N	0.42	2.29
1:A:212:GLU:O	1:A:212:GLU:OE2	0.41	2.38
1:A:192:TRP:O	1:A:193:ASP:C	0.41	2.58
1:A:210:GLY:O	1:A:213:ARG:CB	0.41	2.68
1:A:47:SER:O	1:A:92:GLN:NE2	0.41	2.52
1:A:186:ILE:O	1:A:189:ASN:OD1	0.41	2.37
1:A:182:LEU:O	1:A:183:GLU:C	0.41	2.57

Continued on next page...

Continued from previous page...

Atom-1	Atom-2	Clash(Å)	Distance(Å)
1:A:95:ARG:O	1:A:96:GLU:C	0.41	2.57
1:A:16:PHE:O	1:A:17:LEU:C	0.41	2.58
1:A:5:MET:SD	1:A:179:ASN:OD1	0.40	2.79
1:A:89:ALA:CA	1:A:196:VAL:HG11	0.40	2.44
1:A:34:VAL:O	1:A:35:GLU:HB2	0.40	2.16

6.3 Torsion angles [i](#)

6.3.1 Protein backbone [i](#)

In the following table, the Percentiles column shows the percent Ramachandran outliers of the chain as a percentile score with respect to all PDB entries followed by that with respect to all NMR entries. The Analysed column shows the number of residues for which the backbone conformation was analysed and the total number of residues.

Mol	Chain	Analysed	Favoured	Allowed	Outliers	Percentiles	
1	A	179/181 (99%)	124 (69%)	44 (25%)	11 (6%)	3	21
All	All	179/181 (99%)	124 (69%)	44 (25%)	11 (6%)	3	21

All 11 Ramachandran outliers are listed below. They are sorted by the frequency of occurrence in the ensemble.

Mol	Chain	Res	Type
1	A	29	SER
1	A	34	VAL
1	A	202	ASN
1	A	35	GLU
1	A	193	ASP
1	A	27	SER
1	A	48	GLU
1	A	28	TRP
1	A	201	ASN
1	A	45	THR
1	A	39	THR

6.3.2 Protein sidechains [i](#)

In the following table, the Percentiles column shows the percent sidechain outliers of the chain as a percentile score with respect to all PDB entries followed by that with respect to all NMR entries. The Analysed column shows the number of residues for which the sidechain conformation was analysed and the total number of residues.

Mol	Chain	Analysed	Rotameric	Outliers	Percentiles	
1	A	154/154 (100%)	92 (60%)	62 (40%)	0	5
All	All	154/154 (100%)	92 (60%)	62 (40%)	0	5

All 62 residues with a non-rotameric sidechain are listed below. They are sorted by the frequency of occurrence in the ensemble.

Mol	Chain	Res	Type
1	A	106	ARG
1	A	112	LEU
1	A	194	THR
1	A	215	GLU
1	A	35	GLU
1	A	109	PHE
1	A	7	GLN
1	A	128	GLU
1	A	37	ASN
1	A	124	TYR
1	A	211	GLN
1	A	158	SER
1	A	196	VAL
1	A	5	MET
1	A	34	VAL
1	A	1	MET
1	A	202	ASN
1	A	126	SER
1	A	218	HIS
1	A	134	LEU
1	A	38	ARG
1	A	10	ARG
1	A	159	VAL
1	A	213	ARG
1	A	3	MET
1	A	36	GLU
1	A	23	GLN
1	A	18	SER
1	A	161	LYS
1	A	95	ARG
1	A	94	LEU
1	A	147	PHE
1	A	169	ARG
1	A	96	GLU
1	A	21	LEU
1	A	149	SER

Continued on next page...

Continued from previous page...

Mol	Chain	Res	Type
1	A	6	SER
1	A	198	LEU
1	A	113	THR
1	A	174	MET
1	A	15	ASP
1	A	180	ASP
1	A	102	GLU
1	A	22	SER
1	A	214	LEU
1	A	107	ARG
1	A	39	THR
1	A	185	TRP
1	A	189	ASN
1	A	164	GLN
1	A	154	LEU
1	A	217	HIS
1	A	104	ARG
1	A	141	TRP
1	A	176	THR
1	A	117	HIS
1	A	143	ARG
1	A	162	GLU
1	A	2	SER
1	A	209	LYS
1	A	187	GLN
1	A	12	LEU

6.3.3 RNA ⓘ

There are no RNA molecules in this entry.

6.4 Non-standard residues in protein, DNA, RNA chains ⓘ

There are no non-standard protein/DNA/RNA residues in this entry.

6.5 Carbohydrates ⓘ

There are no carbohydrates in this entry.

6.6 Ligand geometry ⓘ

1 ligand is modelled in this entry.

In the following table, the Counts columns list the number of bonds for which Mogul statistics could be retrieved, the number of bonds that are observed in the model and the number of bonds that are defined in the chemical component dictionary. The Link column lists molecule types, if any, to which the group is linked. The Z score for a bond length is the number of standard deviations the observed value is removed from the expected value. A bond length with $|Z| > 2$ is considered an outlier worth inspection. RMSZ is the average root-mean-square of all Z scores of the bond lengths.

Mol	Type	Chain	Res	Link	Bond lengths		
					Counts	RMSZ	#Z>2
2	43B	A	1000	-	49,53,53	3.22	2 (4%)

In the following table, the Counts columns list the number of angles for which Mogul statistics could be retrieved, the number of angles that are observed in the model and the number of angles that are defined in the chemical component dictionary. The Link column lists molecule types, if any, to which the group is linked. The Z score for a bond angle is the number of standard deviations the observed value is removed from the expected value. A bond angle with $|Z| > 2$ is considered an outlier worth inspection. RMSZ is the average root-mean-square of all Z scores of the bond angles.

Mol	Type	Chain	Res	Link	Bond angles		
					Counts	RMSZ	#Z>2
2	43B	A	1000	-	63,74,74	1.89	2 (3%)

In the following table, the Chirals column lists the number of chiral outliers, the number of chiral centers analysed, the number of these observed in the model and the number defined in the chemical component dictionary. Similar counts are reported in the Torsion and Rings columns. '-' means no outliers of that kind were identified.

Mol	Type	Chain	Res	Link	Chirals	Torsions	Rings
2	43B	A	1000	-	-	1,32,35,35	0,6,6,6

All bond outliers are listed below. They are sorted according to the Z-score.

Mol	Chain	Res	Type	Atoms	Z	Observed(Å)	Ideal(Å)
2	A	1000	43B	O31-S27	14.82	1.59	1.43
2	A	1000	43B	O30-S27	14.09	1.58	1.43

All angle outliers are listed below. They are sorted according to the Z-score.

Mol	Chain	Res	Type	Atoms	Z	Observed($^{\circ}$)	Ideal($^{\circ}$)
2	A	1000	43B	O31-S27-O30	7.93	109.40	119.55
2	A	1000	43B	C28-S27-N26	5.39	113.21	105.91

There are no chirality outliers.

All torsion outliers are listed below.

Mol	Chain	Res	Type	Atoms
2	A	1000	43B	C8-C9-C10-N14

There are no ring outliers.

6.7 Other polymers [i](#)

There are no such molecules in this entry.

6.8 Polymer linkage issues [i](#)

There are no chain breaks in this entry.

7 Chemical shift validation

No chemical shift data were provided