



Full wwPDB X-ray Structure Validation Report ⓘ

Feb 14, 2017 – 06:32 pm GMT

PDB ID : 3O1J
Title : Crystal Structure of the TorS sensor domain - TorT complex in the absence of isopropanol
Authors : Moore, J.O.; Hendrickson, W.A.
Deposited on : 2010-07-21
Resolution : 2.95 Å(reported)

This is a Full wwPDB X-ray Structure Validation Report for a publicly released PDB entry.

We welcome your comments at validation@mail.wwpdb.org

A user guide is available at

<http://wwpdb.org/validation/2016/XrayValidationReportHelp>

with specific help available everywhere you see the ⓘ symbol.

The following versions of software and data (see [references ⓘ](#)) were used in the production of this report:

MolProbity : 4.02b-467
Mogul : 1.7.2 (RC1), CSD as538be (2017)
Xtriage (Phenix) : 1.9-1692
EDS : trunk28620
Percentile statistics : 20161228.v01 (using entries in the PDB archive December 28th 2016)
Refmac : 5.8.0135
CCP4 : 6.5.0
Ideal geometry (proteins) : Engh & Huber (2001)
Ideal geometry (DNA, RNA) : Parkinson et al. (1996)
Validation Pipeline (wwPDB-VP) : recalc28949

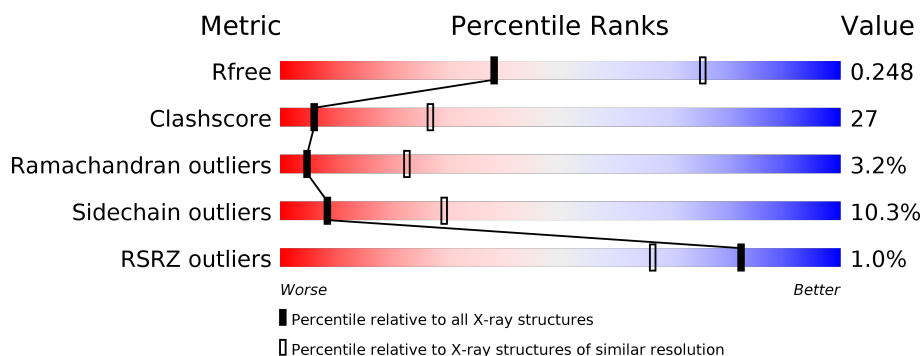
1 Overall quality at a glance

The following experimental techniques were used to determine the structure:

X-RAY DIFFRACTION

The reported resolution of this entry is 2.95 Å.

Percentile scores (ranging between 0-100) for global validation metrics of the entry are shown in the following graphic. The table shows the number of entries on which the scores are based.



Metric	Whole archive (#Entries)	Similar resolution (#Entries, resolution range(Å))
R_{free}	100719	2395 (3.00-2.92)
Clashscore	112137	2773 (3.00-2.92)
Ramachandran outliers	110173	2680 (3.00-2.92)
Sidechain outliers	110143	2683 (3.00-2.92)
RSRZ outliers	101464	2421 (3.00-2.92)

The table below summarises the geometric issues observed across the polymeric chains and their fit to the electron density. The red, orange, yellow and green segments on the lower bar indicate the fraction of residues that contain outliers for ≥ 3 , 2, 1 and 0 types of geometric quality criteria. A grey segment represents the fraction of residues that are not modelled. The numeric value for each fraction is indicated below the corresponding segment, with a dot representing fractions $\leq 5\%$. The upper red bar (where present) indicates the fraction of residues that have poor fit to the electron density. The numeric value is given above the bar.

Mol	Chain	Length	Quality of chain
1	A	277	<div> <div></div> <div>53% 38% 7% .</div> </div>
1	B	277	<div> <div></div> <div>57% 34% 8% .</div> </div>
2	C	304	<div> <div></div> <div>50% 40% 7% .</div> </div>
2	D	304	<div> <div></div> <div>49% 41% 7% .</div> </div>

The following table lists non-polymeric compounds, carbohydrate monomers and non-standard residues in protein, DNA, RNA chains that are outliers for geometric or electron-density-fit crite-

ria:

Mol	Type	Chain	Res	Chirality	Geometry	Clashes	Electron density
3	IPA	C	2	-	-	-	X
3	IPA	D	1	-	-	-	X

2 Entry composition

There are 4 unique types of molecules in this entry. The entry contains 9119 atoms, of which 0 are hydrogens and 0 are deuteriums.

In the tables below, the ZeroOcc column contains the number of atoms modelled with zero occupancy, the AltConf column contains the number of residues with at least one atom in alternate conformation and the Trace column contains the number of residues modelled with at most 2 atoms.

- Molecule 1 is a protein called Sensor protein TorS.

Mol	Chain	Residues	Atoms					ZeroOcc	AltConf	Trace
1	A	273	Total	C	N	O	S	0	0	0
			2193	1360	384	442	7			
1	B	273	Total	C	N	O	S	0	0	0
			2193	1360	384	442	7			

There are 10 discrepancies between the modelled and reference sequences:

Chain	Residue	Modelled	Actual	Comment	Reference
A	47	GLY	-	EXPRESSION TAG	UNP Q87ID1
A	48	SER	-	EXPRESSION TAG	UNP Q87ID1
A	49	GLY	-	EXPRESSION TAG	UNP Q87ID1
A	50	SER	-	EXPRESSION TAG	UNP Q87ID1
A	323	LYS	-	EXPRESSION TAG	UNP Q87ID1
B	47	GLY	-	EXPRESSION TAG	UNP Q87ID1
B	48	SER	-	EXPRESSION TAG	UNP Q87ID1
B	49	GLY	-	EXPRESSION TAG	UNP Q87ID1
B	50	SER	-	EXPRESSION TAG	UNP Q87ID1
B	323	LYS	-	EXPRESSION TAG	UNP Q87ID1

- Molecule 2 is a protein called Periplasmic protein TorT.

Mol	Chain	Residues	Atoms					ZeroOcc	AltConf	Trace
2	C	296	Total	C	N	O	S	0	0	0
			2342	1486	403	446	7			
2	D	296	Total	C	N	O	S	0	0	0
			2342	1486	403	446	7			

There are 10 discrepancies between the modelled and reference sequences:

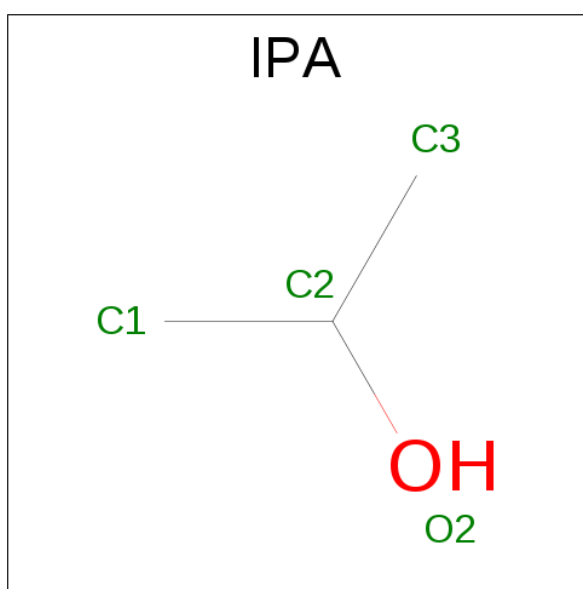
Chain	Residue	Modelled	Actual	Comment	Reference
C	26	GLY	-	EXPRESSION TAG	UNP Q87ID2
C	27	SER	-	EXPRESSION TAG	UNP Q87ID2

Continued on next page...

Continued from previous page...

Chain	Residue	Modelled	Actual	Comment	Reference
C	28	GLY	-	EXPRESSION TAG	UNP Q87ID2
C	29	SER	-	EXPRESSION TAG	UNP Q87ID2
C	30	ASP	-	EXPRESSION TAG	UNP Q87ID2
D	26	GLY	-	EXPRESSION TAG	UNP Q87ID2
D	27	SER	-	EXPRESSION TAG	UNP Q87ID2
D	28	GLY	-	EXPRESSION TAG	UNP Q87ID2
D	29	SER	-	EXPRESSION TAG	UNP Q87ID2
D	30	ASP	-	EXPRESSION TAG	UNP Q87ID2

- Molecule 3 is ISOPROPYL ALCOHOL (three-letter code: IPA) (formula: C₃H₈O).



Mol	Chain	Residues	Atoms	ZeroOcc	AltConf
3	C	1	Total C O 4 3 1	0	0
3	D	1	Total C O 4 3 1	0	0

- Molecule 4 is water.

Mol	Chain	Residues	Atoms	ZeroOcc	AltConf
4	A	14	Total O 14 14	0	0
4	B	10	Total O 10 10	0	0
4	C	8	Total O 8 8	0	0

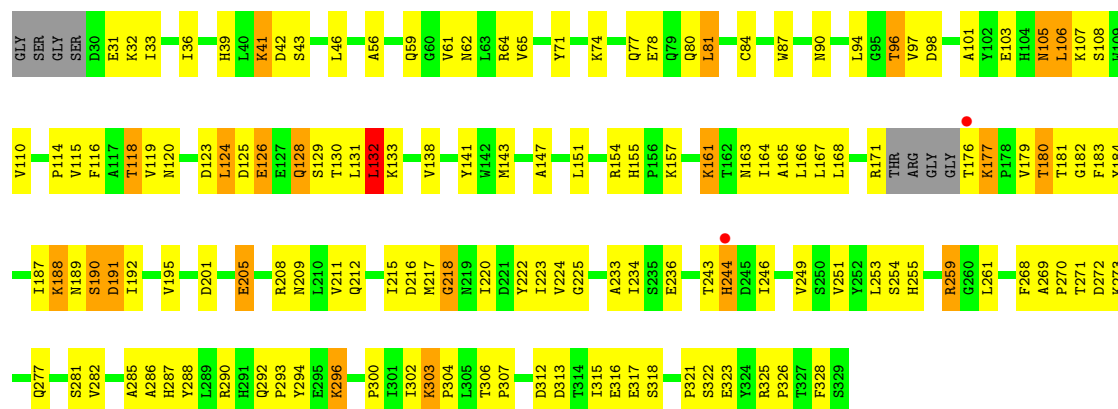
Continued on next page...

Continued from previous page...

Mol	Chain	Residues	Atoms		ZeroOcc	AltConf
4	D	9	Total	O	0	0
			9	9		



• Molecule 2: Periplasmic protein TorT



4 Data and refinement statistics

Property	Value	Source
Space group	P 21 21 21	Depositor
Cell constants a, b, c, α , β , γ	78.39Å 127.67Å 306.53Å 90.00° 90.00° 90.00°	Depositor
Resolution (Å)	19.96 – 2.95 24.87 – 2.95	Depositor EDS
% Data completeness (in resolution range)	97.9 (19.96-2.95) 98.0 (24.87-2.95)	Depositor EDS
R_{merge}	0.08	Depositor
R_{sym}	0.10	Depositor
$\langle I/\sigma(I) \rangle$ ¹	1.96 (at 2.94Å)	Xtriage
Refinement program	CNS 1.2	Depositor
R, R_{free}	0.226 , 0.249 0.226 , 0.248	Depositor DCC
R_{free} test set	3263 reflections (5.08%)	DCC
Wilson B-factor (Å ²)	55.3	Xtriage
Anisotropy	0.302	Xtriage
Bulk solvent k_{sol} (e/Å ³), B_{sol} (Å ²)	0.31 , 30.4	EDS
L-test for twinning ²	$\langle L \rangle = 0.48$, $\langle L^2 \rangle = 0.31$	Xtriage
Estimated twinning fraction	No twinning to report.	Xtriage
F_o, F_c correlation	0.92	EDS
Total number of atoms	9119	wwPDB-VP
Average B, all atoms (Å ²)	55.0	wwPDB-VP

Xtriage's analysis on translational NCS is as follows: *The largest off-origin peak in the Patterson function is 6.58% of the height of the origin peak. No significant pseudotranslation is detected.*

¹Intensities estimated from amplitudes.

²Theoretical values of $\langle |L| \rangle$, $\langle L^2 \rangle$ for acentric reflections are 0.5, 0.333 respectively for untwinned datasets, and 0.375, 0.2 for perfectly twinned datasets.

5 Model quality

5.1 Standard geometry

Bond lengths and bond angles in the following residue types are not validated in this section: IPA

The Z score for a bond length (or angle) is the number of standard deviations the observed value is removed from the expected value. A bond length (or angle) with $|Z| > 5$ is considered an outlier worth inspection. RMSZ is the root-mean-square of all Z scores of the bond lengths (or angles).

Mol	Chain	Bond lengths		Bond angles	
		RMSZ	$\# Z > 5$	RMSZ	$\# Z > 5$
1	A	0.42	1/2208 (0.0%)	0.62	0/2978
1	B	0.44	1/2208 (0.0%)	0.64	0/2978
2	C	0.39	0/2396	0.69	2/3253 (0.1%)
2	D	0.39	0/2396	0.69	1/3253 (0.0%)
All	All	0.41	2/9208 (0.0%)	0.66	3/12462 (0.0%)

All (2) bond length outliers are listed below:

Mol	Chain	Res	Type	Atoms	Z	Observed(Å)	Ideal(Å)
1	B	184	GLU	CD-OE2	7.82	1.34	1.25
1	A	184	GLU	CD-OE2	7.75	1.34	1.25

All (3) bond angle outliers are listed below:

Mol	Chain	Res	Type	Atoms	Z	Observed(°)	Ideal(°)
2	C	218	GLY	N-CA-C	6.87	130.27	113.10
2	C	255	HIS	N-CA-C	-5.67	95.68	111.00
2	D	255	HIS	N-CA-C	-5.55	96.03	111.00

There are no chirality outliers.

There are no planarity outliers.

5.2 Too-close contacts

In the following table, the Non-H and H(model) columns list the number of non-hydrogen atoms and hydrogen atoms in the chain respectively. The H(added) column lists the number of hydrogen atoms added and optimized by MolProbity. The Clashes column lists the number of clashes within the asymmetric unit, whereas Symm-Clashes lists symmetry related clashes.

Mol	Chain	Non-H	H(model)	H(added)	Clashes	Symm-Clashes
1	A	2193	0	2234	121	0
1	B	2193	0	2234	123	0
2	C	2342	0	2303	136	0
2	D	2342	0	2303	138	0
3	C	4	0	8	2	0
3	D	4	0	8	0	0
4	A	14	0	0	0	0
4	B	10	0	0	2	0
4	C	8	0	0	1	0
4	D	9	0	0	1	0
All	All	9119	0	9090	497	0

The all-atom clashscore is defined as the number of clashes found per 1000 atoms (including hydrogen atoms). The all-atom clashscore for this structure is 27.

All (497) close contacts within the same asymmetric unit are listed below, sorted by their clash magnitude.

Atom-1	Atom-2	Interatomic distance (Å)	Clash overlap (Å)
2:D:271:THR:HG22	2:D:273:LYS:H	1.14	1.07
1:B:56:ARG:HB3	1:B:56:ARG:HH11	1.19	1.06
1:B:100:LYS:HE3	1:B:100:LYS:HA	1.39	1.02
2:C:259:ARG:HH11	2:C:259:ARG:HG3	1.20	1.01
1:A:81:ARG:HH12	1:A:134:GLU:HB3	1.22	1.01
1:A:111:LEU:HD23	1:A:313:LEU:HD12	1.46	0.98
2:D:259:ARG:HG3	2:D:259:ARG:HH11	1.29	0.95
1:A:77:ASN:HD21	1:A:80:GLU:H	1.10	0.93
1:A:82:LYS:HE2	1:A:82:LYS:HA	1.49	0.93
2:C:32:LYS:H	2:C:90:ASN:ND2	1.68	0.91
2:D:107:LYS:HG3	2:D:128:GLN:HE21	1.34	0.91
1:B:81:ARG:HH12	1:B:134:GLU:HB2	1.35	0.91
2:C:32:LYS:H	2:C:90:ASN:HD22	1.09	0.91
1:A:147:VAL:HG11	1:A:227:ARG:HB3	1.53	0.90
1:B:76:GLN:HA	1:B:137:LEU:HD11	1.55	0.89
2:C:107:LYS:HG3	2:C:128:GLN:HE21	1.38	0.88
1:B:82:LYS:HE2	1:B:82:LYS:HA	1.55	0.88
1:B:56:ARG:HB3	1:B:56:ARG:NH1	1.90	0.87
1:B:77:ASN:HD21	1:B:80:GLU:H	1.24	0.86
1:B:275:ARG:HG3	1:B:275:ARG:HH11	1.38	0.85
1:A:81:ARG:HH12	1:A:134:GLU:CB	1.88	0.85
1:A:81:ARG:NH1	1:A:134:GLU:HB3	1.91	0.84
2:C:151:LEU:HB3	2:C:192:ILE:CD1	2.07	0.84
2:C:271:THR:CG2	2:C:273:LYS:H	1.92	0.82

Continued on next page...

Continued from previous page...

Atom-1	Atom-2	Interatomic distance (Å)	Clash overlap (Å)
1:B:227:ARG:HG3	1:B:228:THR:H	1.43	0.82
2:D:32:LYS:H	2:D:90:ASN:HD22	1.24	0.81
1:A:143:ILE:HD13	1:A:282:LEU:HD13	1.62	0.81
1:A:261:ARG:HH11	1:A:261:ARG:HG3	1.44	0.81
1:A:167:ASN:ND2	1:A:261:ARG:HH22	1.79	0.81
1:A:77:ASN:HD21	1:A:80:GLU:N	1.79	0.80
1:B:56:ARG:CB	1:B:56:ARG:HH11	1.94	0.80
1:B:102:LEU:HG	1:B:313:LEU:HD23	1.64	0.80
2:D:103:GLU:HG3	2:D:124:LEU:HA	1.62	0.80
1:A:275:ARG:HH11	1:A:275:ARG:HG3	1.46	0.79
1:B:275:ARG:CG	1:B:275:ARG:HH11	1.95	0.78
1:A:149:GLU:CD	1:A:275:ARG:HH12	1.85	0.78
2:C:171:ARG:HB3	2:C:171:ARG:CZ	2.13	0.78
1:B:261:ARG:HG3	1:B:261:ARG:HH11	1.47	0.78
2:D:271:THR:HG21	2:D:318:SER:OG	1.83	0.77
1:B:143:ILE:HD13	1:B:282:LEU:HD22	1.64	0.77
2:D:107:LYS:HG3	2:D:128:GLN:NE2	1.99	0.77
1:B:316:ASP:HB3	4:B:7:HOH:O	1.86	0.75
2:C:32:LYS:N	2:C:90:ASN:HD22	1.84	0.75
1:B:111:LEU:HD23	1:B:313:LEU:HD12	1.69	0.74
2:C:65:VAL:HG22	2:C:328:PHE:HA	1.69	0.74
2:D:65:VAL:HG22	2:D:328:PHE:HA	1.69	0.74
1:A:183:LEU:HD12	1:B:192:TYR:CD2	2.22	0.74
2:D:32:LYS:H	2:D:90:ASN:ND2	1.85	0.74
1:B:251:ARG:HD2	2:D:209:ASN:HD21	1.52	0.73
1:B:149:GLU:CD	1:B:275:ARG:HH12	1.91	0.73
2:C:271:THR:HG21	2:C:318:SER:OG	1.89	0.73
1:A:77:ASN:ND2	1:A:80:GLU:H	1.85	0.72
1:A:234:ARG:HH11	1:A:234:ARG:HG3	1.54	0.72
1:B:271:GLU:O	1:B:275:ARG:HD3	1.88	0.72
2:C:118:THR:HG23	2:C:281:SER:OG	1.90	0.72
2:D:271:THR:HG22	2:D:273:LYS:N	1.97	0.72
1:B:59:SER:HA	1:B:307:ASN:HD21	1.51	0.72
2:C:259:ARG:NH1	2:C:259:ARG:HG3	1.96	0.72
2:C:39:HIS:HD2	2:C:41:LYS:H	1.38	0.72
1:B:61:LEU:O	1:B:65:ILE:HG12	1.90	0.71
2:D:151:LEU:HB3	2:D:192:ILE:CD1	2.20	0.71
1:A:167:ASN:HD21	1:A:261:ARG:HH22	1.39	0.70
1:A:304:SER:HA	1:B:63:THR:HG21	1.73	0.70
2:D:312:ASP:O	2:D:316:GLU:HG2	1.91	0.70
2:C:325:ARG:HD2	4:C:3:HOH:O	1.91	0.70

Continued on next page...

Continued from previous page...

Atom-1	Atom-2	Interatomic distance (Å)	Clash overlap (Å)
1:A:275:ARG:HH11	1:A:275:ARG:CG	2.04	0.69
2:C:143:MET:HE3	2:C:272:ASP:HB3	1.72	0.69
2:C:143:MET:CE	2:C:272:ASP:HB3	2.23	0.69
2:C:312:ASP:O	2:C:316:GLU:HG2	1.92	0.69
1:B:86:ARG:HH21	1:B:87:VAL:HG12	1.56	0.69
1:A:271:GLU:O	1:A:275:ARG:HD3	1.94	0.68
1:A:54:GLU:O	1:A:57:GLN:HB2	1.93	0.68
2:C:116:PHE:CZ	2:C:285:ALA:HA	2.29	0.68
2:D:259:ARG:NH1	2:D:259:ARG:HG3	2.04	0.68
1:A:219:MET:HA	1:A:222:GLN:HE21	1.59	0.67
2:C:271:THR:HG22	2:C:273:LYS:H	1.58	0.67
2:D:32:LYS:HG2	2:D:62:ASN:HD22	1.58	0.67
1:B:96:LEU:HD21	1:B:123:ILE:HD11	1.75	0.67
2:D:143:MET:CE	2:D:270:PRO:HB2	2.24	0.67
1:B:96:LEU:O	1:B:99:ILE:HG22	1.93	0.67
1:A:234:ARG:HG3	1:A:234:ARG:NH1	2.09	0.66
2:D:105:ASN:O	2:D:107:LYS:N	2.28	0.66
2:D:220:ILE:N	2:D:220:ILE:HD12	2.11	0.66
2:C:237:LEU:HD21	2:C:246:ILE:HD12	1.78	0.66
2:C:271:THR:HG23	2:C:273:LYS:H	1.60	0.66
1:A:249:MET:HG2	1:A:269:LEU:HD11	1.78	0.65
1:A:192:TYR:CD2	1:B:183:LEU:HD12	2.31	0.65
1:A:86:ARG:HH21	1:A:87:VAL:HG12	1.61	0.65
2:C:107:LYS:HG2	2:C:131:LEU:HD11	1.78	0.65
2:C:147:ALA:HA	2:C:268:PHE:CE2	2.31	0.65
1:B:167:ASN:ND2	1:B:261:ARG:HH22	1.94	0.65
1:B:227:ARG:HG3	1:B:228:THR:N	2.11	0.65
1:B:86:ARG:NH2	1:B:87:VAL:HG12	2.10	0.65
2:C:211:VAL:HG11	2:C:233:ALA:HA	1.79	0.65
1:B:128:GLU:HG2	1:B:295:LEU:HD21	1.78	0.64
2:D:143:MET:HE2	2:D:270:PRO:HB2	1.80	0.64
2:C:106:LEU:HD21	2:C:115:VAL:HG21	1.79	0.64
2:D:46:LEU:HD23	2:D:326:PRO:HG3	1.80	0.64
2:C:69:GLY:HA3	2:C:73:ASN:ND2	2.12	0.64
1:A:61:LEU:O	1:A:65:ILE:HG12	1.98	0.63
1:A:81:ARG:C	1:A:81:ARG:HD2	2.18	0.63
2:D:125:ASP:OD1	2:D:128:GLN:HB2	1.99	0.63
2:D:74:LYS:O	2:D:78:GLU:HG3	1.98	0.63
2:D:118:THR:HG23	2:D:281:SER:OG	1.97	0.62
1:A:54:GLU:HB3	1:A:102:LEU:HD11	1.81	0.62
1:B:129:LEU:HA	1:B:295:LEU:HD23	1.82	0.62

Continued on next page...

Continued from previous page...

Atom-1	Atom-2	Interatomic distance (Å)	Clash overlap (Å)
1:A:231:ASN:O	1:A:235:ILE:HG13	1.98	0.62
2:C:259:ARG:HH11	2:C:259:ARG:CG	2.03	0.62
1:A:260:THR:HG22	1:A:264:GLN:HE21	1.64	0.62
2:C:92:ILE:HB	2:C:115:VAL:HG12	1.82	0.62
2:C:59:GLN:HG2	2:C:286:ALA:CB	2.30	0.62
2:D:43:SER:HB2	4:D:12:HOH:O	1.99	0.61
1:A:132:THR:HG21	1:A:292:SER:HB3	1.82	0.61
2:C:171:ARG:NH1	2:C:171:ARG:HB3	2.14	0.61
1:A:150:MET:HB3	1:A:223:ILE:HD13	1.81	0.61
1:B:150:MET:HB3	1:B:223:ILE:HD13	1.82	0.61
2:D:31:GLU:N	2:D:31:GLU:OE1	2.29	0.61
2:D:46:LEU:CD2	2:D:326:PRO:HG3	2.30	0.61
2:D:36:ILE:HD12	2:D:81:LEU:HD13	1.83	0.60
2:C:143:MET:HE1	2:C:302:ILE:HG23	1.81	0.60
1:B:231:ASN:O	1:B:235:ILE:HG13	2.02	0.60
1:B:244:ASN:O	1:B:248:ILE:HG22	2.01	0.60
1:B:100:LYS:CE	1:B:100:LYS:HA	2.18	0.60
2:C:151:LEU:HB3	2:C:192:ILE:HD11	1.82	0.60
2:C:36:ILE:HD12	2:C:81:LEU:CD1	2.32	0.59
1:A:82:LYS:CA	1:A:82:LYS:HE2	2.28	0.59
2:D:105:ASN:HB3	2:D:108:SER:OG	2.02	0.59
2:D:71:TYR:HA	2:D:97:VAL:CG2	2.33	0.59
1:B:83:GLU:O	1:B:87:VAL:HG13	2.03	0.59
2:C:105:ASN:HB3	2:C:108:SER:OG	2.02	0.59
1:A:236:GLN:O	1:A:240:THR:HG23	2.02	0.59
1:B:108:ASP:OD2	1:B:111:LEU:HB2	2.02	0.59
1:B:77:ASN:HD21	1:B:80:GLU:N	1.95	0.58
1:B:273:GLY:O	1:B:276:GLN:HB2	2.03	0.58
2:D:188:LYS:NZ	2:D:189:ASN:HB2	2.18	0.58
1:A:82:LYS:CE	1:A:82:LYS:HA	2.29	0.58
2:C:105:ASN:O	2:C:107:LYS:N	2.35	0.58
2:C:124:LEU:HD11	2:C:132:LEU:HD23	1.84	0.58
2:D:116:PHE:CZ	2:D:285:ALA:HA	2.37	0.58
2:D:243:THR:O	2:D:244:HIS:HB2	2.03	0.58
1:A:205:LEU:HD23	1:A:209:LEU:HD23	1.85	0.58
2:D:151:LEU:HB3	2:D:192:ILE:HD13	1.85	0.58
1:B:310:VAL:O	1:B:314:VAL:HG23	2.03	0.58
2:C:147:ALA:HA	2:C:268:PHE:HE2	1.68	0.58
1:A:261:ARG:NH1	1:A:261:ARG:HG3	2.11	0.58
1:B:76:GLN:O	1:B:77:ASN:HB3	2.03	0.58
1:B:155:GLU:O	1:B:159:GLN:HG3	2.04	0.58

Continued on next page...

Continued from previous page...

Atom-1	Atom-2	Interatomic distance (Å)	Clash overlap (Å)
1:B:219:MET:HA	1:B:222:GLN:HE21	1.68	0.58
2:C:106:LEU:O	2:C:110:VAL:HG22	2.04	0.58
2:D:32:LYS:N	2:D:90:ASN:HD22	2.00	0.57
1:B:314:VAL:O	1:B:317:SER:HB3	2.04	0.57
1:B:275:ARG:CG	1:B:275:ARG:NH1	2.59	0.57
2:C:179:VAL:HG11	2:C:251:VAL:HG11	1.86	0.57
2:D:39:HIS:HD2	2:D:41:LYS:H	1.52	0.57
1:B:261:ARG:NH1	1:B:261:ARG:HG3	2.17	0.57
2:D:106:LEU:HD21	2:D:115:VAL:HG21	1.87	0.57
2:C:163:ASN:HB3	2:C:195:VAL:CG2	2.35	0.57
1:B:77:ASN:HD22	1:B:78:GLU:N	2.03	0.56
1:B:275:ARG:HD3	1:B:275:ARG:H	1.70	0.56
2:C:126:GLU:CD	2:C:126:GLU:H	2.09	0.56
2:D:166:LEU:HD23	2:D:224:VAL:HB	1.86	0.56
2:D:103:GLU:HA	2:D:124:LEU:HB3	1.87	0.56
1:B:81:ARG:HH12	1:B:134:GLU:CB	2.13	0.56
2:C:43:SER:OG	2:C:255:HIS:ND1	2.33	0.56
2:D:180:THR:HG22	2:D:184:TYR:CE1	2.41	0.56
1:A:315:ASP:C	1:A:317:SER:N	2.59	0.56
2:C:32:LYS:HD2	2:C:87:TRP:CZ2	2.41	0.55
2:D:176:THR:O	2:D:177:LYS:HB3	2.07	0.55
1:B:68:SER:HB2	1:B:88:LEU:HD13	1.88	0.55
1:A:79:GLN:OE1	1:A:79:GLN:HA	2.06	0.55
1:A:76:GLN:O	1:A:77:ASN:HB3	2.07	0.55
1:A:60:GLU:OE1	1:A:64:ARG:HD3	2.06	0.55
1:B:232:VAL:O	1:B:236:GLN:HG2	2.07	0.55
2:C:151:LEU:HB3	2:C:192:ILE:HD13	1.87	0.55
1:B:167:ASN:HD21	1:B:261:ARG:HH22	1.53	0.55
2:D:143:MET:HE3	2:D:302:ILE:HD13	1.89	0.55
2:C:119:VAL:HG12	2:C:120:ASN:ND2	2.22	0.55
2:C:213:ARG:HG3	2:C:213:ARG:HH11	1.71	0.55
2:D:39:HIS:NE2	2:D:42:ASP:HB2	2.21	0.55
1:A:155:GLU:O	1:A:159:GLN:HG3	2.07	0.55
2:D:151:LEU:HB3	2:D:192:ILE:HD11	1.88	0.55
1:B:200:GLU:HG2	2:D:234:ILE:HG22	1.89	0.55
2:C:126:GLU:CD	2:C:126:GLU:N	2.60	0.54
2:D:77:GLN:HA	2:D:80:GLN:HE21	1.72	0.54
2:C:74:LYS:HA	2:C:97:VAL:HG11	1.89	0.54
1:A:166:GLN:O	1:A:170:THR:HG23	2.07	0.54
1:B:87:VAL:HG23	1:B:91:GLN:HE21	1.72	0.54
2:C:253:LEU:HG	2:C:254:SER:N	2.22	0.54

Continued on next page...

Continued from previous page...

Atom-1	Atom-2	Interatomic distance (Å)	Clash overlap (Å)
2:C:31:GLU:OE2	2:C:290:ARG:NH1	2.40	0.54
1:B:243:GLU:HG3	1:B:247:LYS:HE3	1.89	0.54
1:A:246:LEU:HD21	1:A:273:GLY:HA2	1.89	0.54
1:A:275:ARG:NH1	1:A:275:ARG:CG	2.69	0.54
1:A:314:VAL:O	1:A:317:SER:HB3	2.08	0.54
2:D:143:MET:HE3	2:D:302:ILE:HG12	1.90	0.54
1:A:111:LEU:CD2	1:A:313:LEU:HD12	2.30	0.54
1:B:243:GLU:CG	1:B:247:LYS:HE3	2.38	0.54
2:C:149:LYS:O	2:C:153:GLU:HG3	2.08	0.53
2:C:107:LYS:HG3	2:C:128:GLN:NE2	2.17	0.53
2:D:315:ILE:HD12	2:D:315:ILE:C	2.29	0.53
2:D:36:ILE:CD1	2:D:81:LEU:HD13	2.39	0.53
2:D:171:ARG:CZ	2:D:171:ARG:HB3	2.37	0.53
2:D:216:ASP:C	2:D:218:GLY:H	2.12	0.53
2:D:168:LEU:HD23	2:D:225:GLY:HA2	1.90	0.53
2:D:118:THR:O	2:D:120:ASN:N	2.41	0.53
2:D:165:ALA:HB2	2:D:220:ILE:HG12	1.90	0.53
2:D:180:THR:HG22	2:D:184:TYR:HE1	1.74	0.53
2:C:185:GLU:O	2:C:188:LYS:HB2	2.09	0.53
2:D:143:MET:HE3	2:D:302:ILE:CD1	2.39	0.53
1:A:160:LEU:HD23	1:A:265:MET:HG2	1.91	0.52
2:C:189:ASN:O	2:C:190:SER:HB3	2.09	0.52
2:C:243:THR:O	2:C:244:HIS:HB2	2.09	0.52
2:C:243:THR:O	2:C:244:HIS:CB	2.56	0.52
2:D:163:ASN:HB3	2:D:195:VAL:CG2	2.40	0.52
2:D:243:THR:O	2:D:244:HIS:CB	2.57	0.52
2:C:170:PRO:HG3	2:C:201:ASP:HA	1.92	0.52
1:B:100:LYS:NZ	4:B:4:HOH:O	2.38	0.52
2:C:143:MET:HE3	2:C:272:ASP:CB	2.40	0.52
1:A:187:LYS:HD3	1:A:190:GLN:NE2	2.25	0.52
1:B:160:LEU:HD23	1:B:265:MET:HG2	1.91	0.52
2:C:107:LYS:CG	2:C:128:GLN:HE21	2.17	0.52
1:B:307:ASN:HA	1:B:310:VAL:HG22	1.92	0.51
1:B:65:ILE:CD1	1:B:91:GLN:HB3	2.40	0.51
1:A:315:ASP:C	1:A:317:SER:H	2.13	0.51
2:C:118:THR:O	2:C:120:ASN:N	2.38	0.51
1:A:205:LEU:O	1:A:209:LEU:HD23	2.11	0.51
2:C:124:LEU:O	2:C:124:LEU:HD12	2.11	0.51
2:C:259:ARG:NH1	2:C:259:ARG:CG	2.66	0.51
1:B:282:LEU:O	1:B:285:GLN:HB3	2.09	0.51
2:D:126:GLU:CD	2:D:126:GLU:H	2.13	0.51

Continued on next page...

Continued from previous page...

Atom-1	Atom-2	Interatomic distance (Å)	Clash overlap (Å)
2:D:126:GLU:CD	2:D:126:GLU:N	2.63	0.51
2:D:106:LEU:HB3	2:D:128:GLN:HG3	1.92	0.51
1:A:214:LEU:HD22	1:B:214:LEU:CD2	2.41	0.51
1:A:96:LEU:HD21	1:A:123:ILE:HD11	1.93	0.51
1:B:77:ASN:O	1:B:78:GLU:HB3	2.11	0.51
1:B:81:ARG:C	1:B:83:GLU:H	2.14	0.51
2:C:137:GLY:HA2	2:C:277:GLN:NE2	2.26	0.51
1:B:82:LYS:CE	1:B:82:LYS:HA	2.32	0.50
2:C:138:VAL:HG21	2:C:272:ASP:HB2	1.92	0.50
2:C:45:TRP:HE1	3:C:2:IPA:H11	1.76	0.50
2:C:219:ASN:C	2:C:220:ILE:HD12	2.31	0.50
1:A:235:ILE:HG21	1:A:283:LEU:CD2	2.41	0.50
1:A:275:ARG:HD3	1:A:275:ARG:H	1.76	0.50
2:D:143:MET:HE3	2:D:302:ILE:CG1	2.40	0.50
1:B:148:GLU:OE1	1:B:151:ARG:NH1	2.45	0.50
2:D:220:ILE:CD1	2:D:220:ILE:N	2.74	0.50
1:A:77:ASN:ND2	1:A:79:GLN:H	2.10	0.50
2:C:163:ASN:HB3	2:C:195:VAL:HG23	1.94	0.50
2:C:76:ARG:O	2:C:80:GLN:HG3	2.12	0.50
1:B:260:THR:O	1:B:264:GLN:HG3	2.11	0.49
2:C:106:LEU:HD23	2:C:131:LEU:HD12	1.94	0.49
1:A:215:LEU:HG	1:A:249:MET:HE2	1.94	0.49
1:A:205:LEU:HD23	1:A:209:LEU:CD2	2.41	0.49
2:D:31:GLU:OE2	2:D:290:ARG:NH1	2.44	0.49
2:C:315:ILE:C	2:C:315:ILE:HD12	2.32	0.49
2:D:290:ARG:HD2	2:D:292:GLN:OE1	2.12	0.49
2:D:273:LYS:HD2	2:D:317:GLU:HB2	1.94	0.49
2:D:141:TYR:CE1	2:D:182:GLY:HA2	2.48	0.49
2:D:268:PHE:HE1	2:D:304:PRO:HB2	1.77	0.49
2:C:273:LYS:HE2	2:C:317:GLU:OE1	2.12	0.49
2:C:170:PRO:O	2:C:171:ARG:HB2	2.12	0.49
2:C:36:ILE:HD11	2:C:84:CYS:SG	2.53	0.49
2:D:71:TYR:HA	2:D:97:VAL:HG22	1.94	0.49
2:D:179:VAL:HG11	2:D:251:VAL:HG11	1.95	0.49
2:D:323:GLU:OE2	2:D:323:GLU:HA	2.12	0.49
2:C:103:GLU:HA	2:C:124:LEU:HB3	1.95	0.49
2:C:76:ARG:HH11	2:C:76:ARG:HG2	1.77	0.49
1:B:200:GLU:HG3	2:D:259:ARG:HH22	1.78	0.48
1:B:205:LEU:O	1:B:209:LEU:HD23	2.13	0.48
1:B:65:ILE:HD11	1:B:91:GLN:HB3	1.95	0.48
1:B:77:ASN:ND2	1:B:80:GLU:H	2.02	0.48

Continued on next page...

Continued from previous page...

Atom-1	Atom-2	Interatomic distance (Å)	Clash overlap (Å)
2:C:323:GLU:OE2	2:C:323:GLU:HA	2.12	0.48
1:A:192:TYR:OH	1:B:184:GLU:HG3	2.13	0.48
2:C:75:SER:O	2:C:79:GLN:HG3	2.14	0.48
2:C:71:TYR:O	2:C:97:VAL:HG22	2.13	0.48
2:C:71:TYR:HA	2:C:97:VAL:HG22	1.94	0.48
1:B:129:LEU:CA	1:B:295:LEU:HD23	2.43	0.48
2:C:36:ILE:HD12	2:C:81:LEU:HD12	1.95	0.48
2:D:138:VAL:HG21	2:D:272:ASP:HB2	1.96	0.48
2:D:74:LYS:HA	2:D:97:VAL:HG11	1.95	0.48
2:D:211:VAL:HG11	2:D:233:ALA:HA	1.96	0.48
2:D:306:THR:HB	2:D:307:PRO:HD2	1.96	0.48
1:A:68:SER:OG	1:A:91:GLN:NE2	2.43	0.48
1:B:253:VAL:HG23	1:B:254:LEU:N	2.29	0.48
1:B:132:THR:HG21	1:B:292:SER:HB3	1.96	0.48
1:B:77:ASN:O	1:B:78:GLU:CB	2.61	0.48
2:C:94:LEU:HD22	2:C:95:GLY:N	2.28	0.48
1:A:119:VAL:O	1:A:123:ILE:HG13	2.14	0.48
1:A:56:ARG:HG2	1:A:56:ARG:HH11	1.79	0.47
2:D:143:MET:HE1	2:D:270:PRO:HB2	1.95	0.47
2:D:313:ASP:O	2:D:317:GLU:HG3	2.13	0.47
1:A:227:ARG:HD3	1:A:228:THR:HG23	1.95	0.47
1:B:260:THR:HG21	2:C:328:PHE:CG	2.49	0.47
1:B:148:GLU:CD	1:B:151:ARG:HH12	2.17	0.47
1:B:192:TYR:CD1	1:B:192:TYR:O	2.67	0.47
1:A:304:SER:CA	1:B:63:THR:HG21	2.44	0.47
1:A:227:ARG:HG2	1:A:227:ARG:HH11	1.79	0.47
2:D:71:TYR:O	2:D:97:VAL:HG22	2.14	0.47
1:A:93:GLU:OE1	1:A:93:GLU:HA	2.15	0.47
1:B:132:THR:HG21	1:B:292:SER:CB	2.45	0.47
2:C:71:TYR:OH	3:C:2:IPA:H12	2.14	0.47
2:C:39:HIS:HB3	2:C:70:GLY:HA2	1.96	0.47
1:A:76:GLN:HA	1:A:137:LEU:HD11	1.97	0.47
1:A:167:ASN:HD21	1:A:261:ARG:NH2	2.08	0.47
1:A:132:THR:CG2	1:A:292:SER:HB3	2.43	0.47
2:C:71:TYR:HA	2:C:97:VAL:CG2	2.45	0.47
1:B:105:GLU:OE1	1:B:105:GLU:HA	2.14	0.47
2:D:188:LYS:HZ1	2:D:189:ASN:HB2	1.80	0.47
2:D:56:ALA:HA	2:D:282:VAL:HG11	1.96	0.47
1:A:149:GLU:CD	1:A:275:ARG:NH1	2.62	0.46
1:A:50:SER:HA	1:A:53:ILE:HD12	1.97	0.46
2:C:43:SER:HG	2:C:255:HIS:HD1	1.61	0.46

Continued on next page...

Continued from previous page...

Atom-1	Atom-2	Interatomic distance (Å)	Clash overlap (Å)
2:C:234:ILE:HD11	2:C:266:VAL:CG2	2.44	0.46
2:C:74:LYS:O	2:C:78:GLU:HG3	2.16	0.46
1:A:128:GLU:HG2	1:A:295:LEU:HD21	1.97	0.46
1:A:54:GLU:HB3	1:A:102:LEU:CD1	2.44	0.46
2:C:116:PHE:N	2:C:116:PHE:CD1	2.83	0.46
2:C:103:GLU:HG3	2:C:124:LEU:HA	1.98	0.46
1:A:164:GLN:HG2	1:A:261:ARG:NH1	2.30	0.46
1:A:139:LEU:HD13	1:A:285:GLN:HA	1.98	0.46
1:A:56:ARG:HG2	1:A:56:ARG:NH1	2.31	0.46
1:B:57:GLN:CA	1:B:57:GLN:HE21	2.28	0.46
2:C:105:ASN:O	2:C:128:GLN:NE2	2.49	0.46
1:B:171:ILE:CD1	2:C:325:ARG:HD3	2.45	0.46
1:A:77:ASN:OD1	1:A:80:GLU:HG3	2.15	0.46
1:B:275:ARG:N	1:B:275:ARG:CD	2.79	0.46
1:B:77:ASN:N	1:B:77:ASN:HD22	2.14	0.46
2:D:59:GLN:O	2:D:290:ARG:NH2	2.49	0.46
1:B:243:GLU:O	1:B:247:LYS:HE2	2.15	0.46
1:B:77:ASN:ND2	1:B:79:GLN:H	2.14	0.46
2:C:105:ASN:HB2	2:C:106:LEU:H	1.44	0.46
1:A:311:ASN:C	1:A:313:LEU:N	2.68	0.46
1:A:86:ARG:NH2	1:A:87:VAL:HG12	2.29	0.46
1:A:204:ASP:OD1	2:C:208:ARG:NH2	2.49	0.45
2:D:131:LEU:O	2:D:133:LYS:HG2	2.16	0.45
2:D:143:MET:HA	2:D:143:MET:HE2	1.99	0.45
1:A:129:LEU:HA	1:A:295:LEU:HD23	1.99	0.45
2:D:128:GLN:C	2:D:130:THR:H	2.18	0.45
2:D:209:ASN:O	2:D:212:GLN:HB2	2.16	0.45
2:D:59:GLN:HG2	2:D:286:ALA:CB	2.46	0.45
1:B:79:GLN:HA	1:B:79:GLN:OE1	2.16	0.45
2:C:253:LEU:HD22	2:C:271:THR:OG1	2.16	0.45
2:D:224:VAL:HA	2:D:249:VAL:O	2.17	0.45
2:C:163:ASN:HB3	2:C:195:VAL:HG21	1.99	0.45
1:A:246:LEU:O	1:A:250:LYS:HG3	2.17	0.45
1:A:77:ASN:N	1:A:77:ASN:HD22	2.14	0.45
1:B:219:MET:HE1	1:B:246:LEU:HA	1.99	0.45
2:D:107:LYS:CG	2:D:128:GLN:NE2	2.76	0.45
2:D:220:ILE:CD1	2:D:220:ILE:H	2.29	0.45
1:A:321:THR:HG22	1:A:321:THR:O	2.16	0.45
1:A:320:THR:O	1:A:320:THR:HG22	2.17	0.45
2:C:155:HIS:O	2:C:190:SER:O	2.33	0.45
2:D:163:ASN:HB3	2:D:195:VAL:HG23	1.98	0.45

Continued on next page...

Continued from previous page...

Atom-1	Atom-2	Interatomic distance (Å)	Clash overlap (Å)
2:D:65:VAL:HG23	2:D:328:PHE:CD2	2.52	0.45
1:A:306:LEU:O	1:A:310:VAL:HG13	2.17	0.45
1:A:315:ASP:O	1:A:317:SER:N	2.50	0.45
2:D:115:VAL:HG22	2:D:131:LEU:HB2	1.99	0.45
2:D:277:GLN:HG2	2:D:300:PRO:HG3	1.99	0.45
1:A:154:SER:HB2	1:A:223:ILE:HD12	1.99	0.44
1:A:227:ARG:CZ	1:A:227:ARG:HB2	2.46	0.44
1:A:278:VAL:HG13	1:A:279:PHE:N	2.32	0.44
2:C:141:TYR:CE1	2:C:182:GLY:HA2	2.52	0.44
2:D:183:PHE:O	2:D:187:ILE:HG12	2.17	0.44
2:D:253:LEU:HG	2:D:254:SER:N	2.33	0.44
2:D:177:LYS:O	2:D:181:THR:HG23	2.17	0.44
2:C:211:VAL:O	2:C:215:ILE:HG13	2.18	0.44
1:A:100:LYS:HE3	1:A:100:LYS:HA	1.99	0.44
1:B:164:GLN:HG2	1:B:261:ARG:NH1	2.33	0.44
1:B:251:ARG:HD2	2:D:209:ASN:ND2	2.27	0.44
2:D:36:ILE:HD12	2:D:81:LEU:CD1	2.46	0.44
2:D:36:ILE:HD11	2:D:84:CYS:SG	2.58	0.44
1:B:200:GLU:OE2	2:D:259:ARG:NH2	2.50	0.44
1:B:205:LEU:HD23	1:B:209:LEU:CD2	2.47	0.44
2:C:76:ARG:NH1	2:C:76:ARG:HG2	2.32	0.44
2:C:81:LEU:HD12	2:C:81:LEU:HA	1.86	0.44
2:D:161:LYS:HB3	2:D:161:LYS:HE2	1.78	0.44
1:A:115:LEU:O	1:A:119:VAL:HG23	2.17	0.44
1:A:81:ARG:NH1	1:A:134:GLU:CB	2.66	0.44
1:B:206:THR:HG22	1:B:207:GLU:N	2.33	0.44
2:C:242:LYS:O	2:C:245:ASP:HB2	2.17	0.44
2:C:36:ILE:HD12	2:C:81:LEU:HD13	1.98	0.44
2:D:39:HIS:CD2	2:D:41:LYS:HG2	2.53	0.44
1:B:95:LEU:O	1:B:99:ILE:HB	2.18	0.44
2:C:136:VAL:HG22	2:C:298:ALA:HB3	1.98	0.44
2:C:65:VAL:HG22	2:C:328:PHE:CA	2.44	0.44
2:D:223:ILE:HG13	2:D:246:ILE:HG21	2.00	0.44
1:A:53:ILE:HG13	1:A:53:ILE:H	1.64	0.44
2:D:220:ILE:HD12	2:D:220:ILE:H	1.81	0.44
1:B:210:HIS:C	1:B:210:HIS:HD1	2.22	0.43
1:B:65:ILE:O	1:B:68:SER:N	2.51	0.43
1:A:144:ASP:OD2	1:A:227:ARG:NH2	2.51	0.43
1:A:246:LEU:HD21	1:A:273:GLY:CA	2.48	0.43
1:A:56:ARG:O	1:A:60:GLU:HB2	2.19	0.43
1:B:235:ILE:HG21	1:B:283:LEU:HD23	2.00	0.43

Continued on next page...

Continued from previous page...

Atom-1	Atom-2	Interatomic distance (Å)	Clash overlap (Å)
2:C:83:LEU:O	2:C:83:LEU:HD23	2.17	0.43
2:D:155:HIS:O	2:D:190:SER:O	2.35	0.43
2:D:261:LEU:HD11	2:D:269:ALA:HB3	2.00	0.43
2:C:122:LEU:O	2:C:122:LEU:HG	2.17	0.43
2:C:203:ASP:OD2	2:C:206:LEU:HG	2.18	0.43
1:B:320:THR:O	1:B:320:THR:HG22	2.18	0.43
1:A:246:LEU:CD2	1:A:273:GLY:HA2	2.49	0.43
2:D:277:GLN:HE21	2:D:277:GLN:HB3	1.67	0.43
2:D:290:ARG:HB2	2:D:292:GLN:OE1	2.19	0.43
1:B:290:GLU:OE1	1:B:290:GLU:HA	2.18	0.43
2:C:143:MET:HE2	2:C:272:ASP:HB3	1.98	0.43
2:C:133:LYS:HE3	2:C:288:TYR:OH	2.19	0.43
2:C:280:LEU:HD13	2:C:298:ALA:HB1	1.99	0.43
2:C:59:GLN:O	2:C:290:ARG:NH2	2.50	0.43
1:B:204:ASP:OD1	2:D:208:ARG:NH2	2.52	0.43
1:B:243:GLU:HB2	1:B:276:GLN:NE2	2.34	0.43
2:D:293:PRO:O	2:D:294:TYR:HB3	2.19	0.43
1:A:282:LEU:HA	1:A:282:LEU:HD13	1.87	0.43
1:B:232:VAL:HG13	1:B:233:ASP:N	2.34	0.43
2:D:65:VAL:HG22	2:D:328:PHE:CA	2.46	0.43
1:B:102:LEU:CG	1:B:313:LEU:HD23	2.43	0.43
1:B:83:GLU:C	1:B:85:GLY:N	2.72	0.43
1:A:148:GLU:OE1	1:A:151:ARG:NH1	2.52	0.42
2:D:132:LEU:HD22	2:D:132:LEU:HA	1.90	0.42
1:B:66:ILE:O	1:B:69:VAL:HG22	2.19	0.42
2:C:143:MET:HE1	2:C:302:ILE:CG2	2.46	0.42
2:D:106:LEU:HD12	2:D:106:LEU:HA	1.79	0.42
2:D:211:VAL:O	2:D:215:ILE:HG13	2.19	0.42
2:D:287:HIS:O	2:D:288:TYR:C	2.57	0.42
1:A:275:ARG:N	1:A:275:ARG:CD	2.82	0.42
1:B:81:ARG:C	1:B:81:ARG:HD2	2.40	0.42
1:A:200:GLU:HG2	2:C:234:ILE:HG22	2.01	0.42
1:A:57:GLN:HE21	1:A:57:GLN:HA	1.84	0.42
1:A:69:VAL:HG23	1:A:70:GLN:N	2.34	0.42
2:C:116:PHE:CE2	2:C:285:ALA:HA	2.54	0.42
2:D:96:THR:HG21	2:D:98:ASP:O	2.19	0.42
1:A:219:MET:HE3	1:A:219:MET:HB2	2.01	0.42
1:A:73:SER:OG	1:A:296:MET:CE	2.67	0.42
2:C:146:GLU:HG3	2:C:268:PHE:HZ	1.83	0.42
2:C:50:TYR:CZ	2:C:321:PRO:HG2	2.55	0.42
2:D:32:LYS:HD2	2:D:87:TRP:CZ2	2.54	0.42

Continued on next page...

Continued from previous page...

Atom-1	Atom-2	Interatomic distance (Å)	Clash overlap (Å)
2:D:157:LYS:HA	2:D:191:ASP:HB2	2.01	0.42
1:A:200:GLU:OE2	2:C:259:ARG:NH2	2.45	0.42
1:B:162:ARG:O	1:B:166:GLN:HG2	2.19	0.42
2:C:220:ILE:N	2:C:220:ILE:HD12	2.35	0.42
2:D:101:ALA:C	2:D:103:GLU:H	2.23	0.42
2:D:147:ALA:HA	2:D:268:PHE:CE2	2.55	0.42
2:D:166:LEU:C	2:D:167:LEU:HD12	2.40	0.42
1:A:235:ILE:CG2	1:A:283:LEU:CD2	2.97	0.42
1:B:306:LEU:O	1:B:310:VAL:HG13	2.20	0.42
2:C:136:VAL:HG23	2:C:284:GLN:OE1	2.19	0.42
2:D:114:PRO:HB3	2:D:133:LYS:HG3	2.01	0.42
2:D:188:LYS:HZ1	2:D:189:ASN:CB	2.33	0.42
1:B:252:ARG:NE	2:D:205:GLU:HG3	2.35	0.42
2:D:296:LYS:HE3	2:D:296:LYS:HB2	1.93	0.42
1:A:108:ASP:OD2	1:A:111:LEU:HB2	2.20	0.41
2:C:92:ILE:HD12	2:C:110:VAL:CG1	2.50	0.41
2:D:321:PRO:O	2:D:323:GLU:N	2.52	0.41
1:A:215:LEU:CD1	1:A:245:ASN:OD1	2.67	0.41
1:A:58:VAL:HG21	1:A:99:ILE:HD12	2.00	0.41
1:B:249:MET:HG2	1:B:269:LEU:HD11	2.03	0.41
1:A:154:SER:OG	1:A:220:LEU:HA	2.21	0.41
1:A:70:GLN:HA	1:A:296:MET:CE	2.50	0.41
1:B:235:ILE:HD13	1:B:282:LEU:HD12	2.01	0.41
2:C:268:PHE:HE1	2:C:304:PRO:HB2	1.85	0.41
2:C:306:THR:HB	2:C:307:PRO:HD2	2.02	0.41
2:D:143:MET:CE	2:D:302:ILE:HG23	2.50	0.41
2:D:36:ILE:HB	2:D:94:LEU:HD23	2.02	0.41
1:A:258:ASP:HA	1:A:259:PRO:HD2	1.83	0.41
1:A:281:ILE:HG13	1:A:281:ILE:O	2.21	0.41
1:B:226:ALA:O	1:B:229:LEU:HB2	2.21	0.41
1:A:208:ARG:HD2	2:C:208:ARG:CZ	2.51	0.41
1:B:148:GLU:CD	1:B:151:ARG:NH1	2.74	0.41
2:C:213:ARG:HG3	2:C:213:ARG:NH1	2.36	0.41
2:C:140:TRP:HE3	2:C:179:VAL:CG2	2.34	0.41
1:A:171:ILE:HG21	2:D:325:ARG:NH1	2.36	0.41
2:C:105:ASN:OD1	2:C:105:ASN:N	2.54	0.41
1:B:227:ARG:CG	1:B:228:THR:H	2.24	0.41
2:C:269:ALA:HA	2:C:270:PRO:HD3	1.92	0.41
2:D:105:ASN:HB2	2:D:106:LEU:H	1.60	0.41
1:A:151:ARG:HH11	1:A:151:ARG:HB3	1.86	0.41
1:B:77:ASN:ND2	1:B:77:ASN:N	2.69	0.41

Continued on next page...

Continued from previous page...

Atom-1	Atom-2	Interatomic distance (Å)	Clash overlap (Å)
2:C:90:ASN:O	2:C:114:PRO:HD2	2.21	0.41
2:C:166:LEU:O	2:C:167:LEU:HD12	2.21	0.41
2:C:35:ALA:HB3	2:C:65:VAL:HG12	2.03	0.41
2:D:164:ILE:CD1	2:D:222:TYR:HB2	2.50	0.41
2:D:65:VAL:HG23	2:D:328:PHE:HD2	1.86	0.41
1:A:192:TYR:CE2	1:B:183:LEU:HD12	2.55	0.41
2:D:106:LEU:O	2:D:110:VAL:HG22	2.20	0.41
2:D:259:ARG:NH1	2:D:259:ARG:CG	2.73	0.41
2:D:33:ILE:HD12	2:D:61:VAL:HG21	2.03	0.41
1:B:206:THR:CG2	1:B:207:GLU:N	2.84	0.40
1:B:227:ARG:HB2	1:B:227:ARG:CZ	2.50	0.40
1:B:278:VAL:O	1:B:282:LEU:HB2	2.20	0.40
2:C:189:ASN:O	2:C:189:ASN:CG	2.60	0.40
2:D:302:ILE:O	2:D:303:LYS:HD2	2.21	0.40
1:A:196:ASP:O	1:A:200:GLU:HB2	2.20	0.40
1:B:119:VAL:O	1:B:123:ILE:HG13	2.21	0.40
2:D:188:LYS:NZ	2:D:189:ASN:CB	2.84	0.40
2:C:106:LEU:HA	2:C:106:LEU:HD12	1.86	0.40
2:C:253:LEU:HG	2:C:254:SER:H	1.84	0.40
2:C:43:SER:HB3	2:C:254:SER:HB2	2.04	0.40
2:C:32:LYS:HG2	2:C:62:ASN:HD22	1.86	0.40
2:D:96:THR:CG2	2:D:98:ASP:O	2.69	0.40

There are no symmetry-related clashes.

5.3 Torsion angles [i](#)

5.3.1 Protein backbone [i](#)

In the following table, the Percentiles column shows the percent Ramachandran outliers of the chain as a percentile score with respect to all X-ray entries followed by that with respect to entries of similar resolution.

The Analysed column shows the number of residues for which the backbone conformation was analysed, and the total number of residues.

Mol	Chain	Analysed	Favoured	Allowed	Outliers	Percentiles	
1	A	271/277 (98%)	246 (91%)	17 (6%)	8 (3%)	5	24
1	B	271/277 (98%)	243 (90%)	21 (8%)	7 (3%)	6	28
2	C	292/304 (96%)	248 (85%)	33 (11%)	11 (4%)	4	18

Continued on next page...

Continued from previous page...

Mol	Chain	Analysed	Favoured	Allowed	Outliers	Percentiles	
2	D	292/304 (96%)	255 (87%)	27 (9%)	10 (3%)	4	21
All	All	1126/1162 (97%)	992 (88%)	98 (9%)	36 (3%)	5	22

All (36) Ramachandran outliers are listed below:

Mol	Chain	Res	Type
1	A	76	GLN
1	A	77	ASN
1	B	77	ASN
1	B	188	LYS
1	B	259	PRO
2	C	106	LEU
2	C	190	SER
2	C	218	GLY
2	D	106	LEU
2	D	218	GLY
1	A	188	LYS
1	A	193	GLN
1	B	76	GLN
1	B	185	ALA
2	C	125	ASP
2	D	132	LEU
2	D	322	SER
1	A	259	PRO
2	C	177	LYS
2	C	244	HIS
2	C	322	SER
2	D	129	SER
1	B	317	SER
2	C	189	ASN
2	D	177	LYS
2	D	217	MET
2	D	244	HIS
1	A	256	VAL
1	B	82	LYS
2	C	129	SER
2	D	190	SER
1	A	83	GLU
1	A	191	VAL
2	C	102	TYR
2	C	119	VAL
2	D	119	VAL

5.3.2 Protein sidechains ⓘ

In the following table, the Percentiles column shows the percent sidechain outliers of the chain as a percentile score with respect to all X-ray entries followed by that with respect to entries of similar resolution.

The Analysed column shows the number of residues for which the sidechain conformation was analysed, and the total number of residues.

Mol	Chain	Analysed	Rotameric	Outliers	Percentiles	
1	A	251/254 (99%)	224 (89%)	27 (11%)	7	27
1	B	251/254 (99%)	226 (90%)	25 (10%)	9	31
2	C	253/257 (98%)	223 (88%)	30 (12%)	6	23
2	D	253/257 (98%)	231 (91%)	22 (9%)	12	38
All	All	1008/1022 (99%)	904 (90%)	104 (10%)	8	29

All (104) residues with a non-rotameric sidechain are listed below:

Mol	Chain	Res	Type
1	A	56	ARG
1	A	57	GLN
1	A	71	MET
1	A	77	ASN
1	A	82	LYS
1	A	99	ILE
1	A	100	LYS
1	A	126	LEU
1	A	141	LYS
1	A	144	ASP
1	A	148	GLU
1	A	157	LEU
1	A	184	GLU
1	A	188	LYS
1	A	192	TYR
1	A	210	HIS
1	A	214	LEU
1	A	227	ARG
1	A	247	LYS
1	A	263	LYS
1	A	275	ARG
1	A	281	ILE
1	A	282	LEU
1	A	285	GLN

Continued on next page...

Continued from previous page...

Mol	Chain	Res	Type
1	A	303	PHE
1	A	304	SER
1	A	308	SER
1	B	54	GLU
1	B	56	ARG
1	B	57	GLN
1	B	77	ASN
1	B	100	LYS
1	B	111	LEU
1	B	112	LEU
1	B	134	GLU
1	B	141	LYS
1	B	148	GLU
1	B	157	LEU
1	B	189	ASP
1	B	192	TYR
1	B	205	LEU
1	B	206	THR
1	B	209	LEU
1	B	210	HIS
1	B	214	LEU
1	B	247	LYS
1	B	248	ILE
1	B	275	ARG
1	B	281	ILE
1	B	282	LEU
1	B	283	LEU
1	B	285	GLN
2	C	40	LEU
2	C	41	LYS
2	C	42	ASP
2	C	46	LEU
2	C	94	LEU
2	C	96	THR
2	C	97	VAL
2	C	105	ASN
2	C	118	THR
2	C	123	ASP
2	C	124	LEU
2	C	126	GLU
2	C	128	GLN
2	C	132	LEU

Continued on next page...

Continued from previous page...

Mol	Chain	Res	Type
2	C	154	ARG
2	C	161	LYS
2	C	167	LEU
2	C	188	LYS
2	C	189	ASN
2	C	191	ASP
2	C	201	ASP
2	C	202	ASN
2	C	205	GLU
2	C	241	ASP
2	C	251	VAL
2	C	259	ARG
2	C	273	LYS
2	C	296	LYS
2	C	301	ILE
2	C	312	ASP
2	D	41	LYS
2	D	64	ARG
2	D	81	LEU
2	D	96	THR
2	D	105	ASN
2	D	118	THR
2	D	123	ASP
2	D	124	LEU
2	D	126	GLU
2	D	128	GLN
2	D	132	LEU
2	D	154	ARG
2	D	161	LYS
2	D	180	THR
2	D	188	LYS
2	D	191	ASP
2	D	201	ASP
2	D	205	GLU
2	D	236	GLU
2	D	259	ARG
2	D	296	LYS
2	D	303	LYS

Some sidechains can be flipped to improve hydrogen bonding and reduce clashes. All (53) such sidechains are listed below:

Mol	Chain	Res	Type
1	A	57	GLN
1	A	70	GLN
1	A	77	ASN
1	A	118	ASN
1	A	125	ASN
1	A	164	GLN
1	A	167	ASN
1	A	190	GLN
1	A	221	ASN
1	A	222	GLN
1	A	236	GLN
1	A	237	GLN
1	A	264	GLN
1	A	267	GLN
1	A	293	GLN
1	A	307	ASN
1	B	57	GLN
1	B	70	GLN
1	B	77	ASN
1	B	91	GLN
1	B	118	ASN
1	B	125	ASN
1	B	164	GLN
1	B	167	ASN
1	B	178	HIS
1	B	190	GLN
1	B	222	GLN
1	B	236	GLN
1	B	237	GLN
1	B	264	GLN
1	B	267	GLN
1	B	276	GLN
1	B	285	GLN
1	B	297	GLN
1	B	307	ASN
2	C	39	HIS
2	C	62	ASN
2	C	90	ASN
2	C	120	ASN
2	C	128	GLN
2	C	193	HIS
2	C	209	ASN
2	C	212	GLN

Continued on next page...

Continued from previous page...

Mol	Chain	Res	Type
2	C	277	GLN
2	D	39	HIS
2	D	62	ASN
2	D	80	GLN
2	D	90	ASN
2	D	120	ASN
2	D	128	GLN
2	D	209	ASN
2	D	212	GLN
2	D	277	GLN

5.3.3 RNA ⓘ

There are no RNA molecules in this entry.

5.4 Non-standard residues in protein, DNA, RNA chains ⓘ

There are no non-standard protein/DNA/RNA residues in this entry.

5.5 Carbohydrates ⓘ

There are no carbohydrates in this entry.

5.6 Ligand geometry ⓘ

2 ligands are modelled in this entry.

In the following table, the Counts columns list the number of bonds (or angles) for which Mogul statistics could be retrieved, the number of bonds (or angles) that are observed in the model and the number of bonds (or angles) that are defined in the chemical component dictionary. The Link column lists molecule types, if any, to which the group is linked. The Z score for a bond length (or angle) is the number of standard deviations the observed value is removed from the expected value. A bond length (or angle) with $|Z| > 2$ is considered an outlier worth inspection. RMSZ is the root-mean-square of all Z scores of the bond lengths (or angles).

Mol	Type	Chain	Res	Link	Bond lengths			Bond angles		
					Counts	RMSZ	$\# Z > 2$	Counts	RMSZ	$\# Z > 2$
3	IPA	C	2	-	3,3,3	0.76	0	3,3,3	0.35	0
3	IPA	D	1	-	3,3,3	0.68	0	3,3,3	0.32	0

In the following table, the Chirals column lists the number of chiral outliers, the number of chiral

centers analysed, the number of these observed in the model and the number defined in the chemical component dictionary. Similar counts are reported in the Torsion and Rings columns. '-' means no outliers of that kind were identified.

Mol	Type	Chain	Res	Link	Chirals	Torsions	Rings
3	IPA	C	2	-	-	0/0/0/0	0/0/0/0
3	IPA	D	1	-	-	0/0/0/0	0/0/0/0

There are no bond length outliers.

There are no bond angle outliers.

There are no chirality outliers.

There are no torsion outliers.

There are no ring outliers.

1 monomer is involved in 2 short contacts:

Mol	Chain	Res	Type	Clashes	Symm-Clashes
3	C	2	IPA	2	0

5.7 Other polymers [i](#)

There are no such residues in this entry.

5.8 Polymer linkage issues [i](#)

There are no chain breaks in this entry.

6 Fit of model and data [i](#)

6.1 Protein, DNA and RNA chains [i](#)

In the following table, the column labelled ‘#RSRZ > 2’ contains the number (and percentage) of RSRZ outliers, followed by percent RSRZ outliers for the chain as percentile scores relative to all X-ray entries and entries of similar resolution. The OWAB column contains the minimum, median, 95th percentile and maximum values of the occupancy-weighted average B-factor per residue. The column labelled ‘Q < 0.9’ lists the number of (and percentage) of residues with an average occupancy less than 0.9.

Mol	Chain	Analysed	<RSRZ>	#RSRZ>2	OWAB(Å ²)	Q<0.9
1	A	273/277 (98%)	-0.32	4 (1%) 74 55	33, 55, 93, 128	0
1	B	273/277 (98%)	-0.27	4 (1%) 74 55	32, 56, 92, 136	0
2	C	296/304 (97%)	-0.31	1 (0%) 93 86	32, 51, 70, 86	0
2	D	296/304 (97%)	-0.26	2 (0%) 87 74	33, 52, 71, 87	0
All	All	1138/1162 (97%)	-0.29	11 (0%) 82 66	32, 53, 83, 136	0

All (11) RSRZ outliers are listed below:

Mol	Chain	Res	Type	RSRZ
1	B	321	THR	7.2
2	C	176	THR	6.3
1	A	321	THR	5.7
1	B	320	THR	5.5
2	D	176	THR	3.9
1	A	320	THR	3.7
1	A	319	LYS	3.1
1	B	52	MET	2.7
1	B	318	ASN	2.3
1	A	257	GLU	2.2
2	D	244	HIS	2.0

6.2 Non-standard residues in protein, DNA, RNA chains [i](#)

There are no non-standard protein/DNA/RNA residues in this entry.

6.3 Carbohydrates [i](#)

There are no carbohydrates in this entry.

6.4 Ligands [i](#)

In the following table, the Atoms column lists the number of modelled atoms in the group and the number defined in the chemical component dictionary. LLDF column lists the quality of electron density of the group with respect to its neighbouring residues in protein, DNA or RNA chains. The B-factors column lists the minimum, median, 95th percentile and maximum values of B factors of atoms in the group. The column labelled 'Q< 0.9' lists the number of atoms with occupancy less than 0.9.

Mol	Type	Chain	Res	Atoms	RSCC	RSR	LLDF	B-factors(Å ²)	Q<0.9
3	IPA	C	2	4/4	0.88	0.34	14.31	44,45,47,47	0
3	IPA	D	1	4/4	0.84	0.38	14.02	57,59,59,60	0

6.5 Other polymers [i](#)

There are no such residues in this entry.