



# wwPDB X-ray Structure Validation Summary Report ⓘ

Feb 15, 2017 – 04:23 am GMT

PDB ID : 4O1O  
Title : Crystal Structure of RNase L in complex with 2-5A  
Authors : Huang, H.; Zeqiraj, E.; Ceccarelli, D.F.; Sicheri, F.  
Deposited on : 2013-12-16  
Resolution : 3.27 Å(reported)

This is a wwPDB X-ray Structure Validation Summary Report for a publicly released PDB entry.

We welcome your comments at [validation@mail.wwpdb.org](mailto:validation@mail.wwpdb.org)

A user guide is available at

<http://wwpdb.org/validation/2016/XrayValidationReportHelp>

with specific help available everywhere you see the ⓘ symbol.

---

The following versions of software and data (see [references ⓘ](#)) were used in the production of this report:

MolProbity : 4.02b-467  
Mogul : 1.7.2 (RC1), CSD as538be (2017)  
Xtriage (Phenix) : 1.9-1692  
EDS : trunk28620  
Percentile statistics : 20161228.v01 (using entries in the PDB archive December 28th 2016)  
Refmac : 5.8.0135  
CCP4 : 6.5.0  
Ideal geometry (proteins) : Engh & Huber (2001)  
Ideal geometry (DNA, RNA) : Parkinson et al. (1996)  
Validation Pipeline (wwPDB-VP) : recalc28949

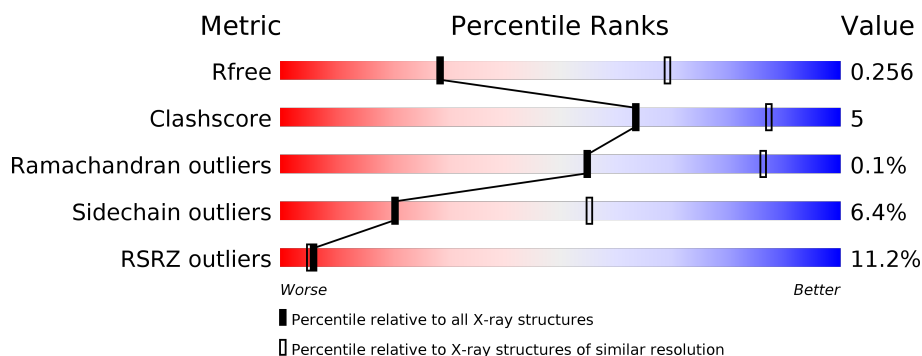
# 1 Overall quality at a glance

The following experimental techniques were used to determine the structure:

## *X-RAY DIFFRACTION*

The reported resolution of this entry is 3.27 Å.

Percentile scores (ranging between 0-100) for global validation metrics of the entry are shown in the following graphic. The table shows the number of entries on which the scores are based.



Metric	Whole archive (#Entries)	Similar resolution (#Entries, resolution range(Å))
$R_{free}$	100719	1006 (3.34-3.22)
Clashscore	112137	1070 (3.34-3.22)
Ramachandran outliers	110173	1050 (3.34-3.22)
Sidechain outliers	110143	1049 (3.34-3.22)
RSRZ outliers	101464	1011 (3.34-3.22)

The table below summarises the geometric issues observed across the polymeric chains and their fit to the electron density. The red, orange, yellow and green segments on the lower bar indicate the fraction of residues that contain outliers for  $\geq 3$ , 2, 1 and 0 types of geometric quality criteria. A grey segment represents the fraction of residues that are not modelled. The numeric value for each fraction is indicated below the corresponding segment, with a dot representing fractions  $\leq 5\%$ . The upper red bar (where present) indicates the fraction of residues that have poor fit to the electron density. The numeric value is given above the bar.

Mol	Chain	Length	Quality of chain
1	A	717	 3% 79% 13% • 6%
1	B	717	 3% 79% 13% • 6%
1	C	717	 17% 80% 12% • 6%
1	D	717	 20% 78% 14% • 6%

## 2 Entry composition

There are 2 unique types of molecules in this entry. The entry contains 21697 atoms, of which 0 are hydrogens and 0 are deuteriums.

In the tables below, the ZeroOcc column contains the number of atoms modelled with zero occupancy, the AltConf column contains the number of residues with at least one atom in alternate conformation and the Trace column contains the number of residues modelled with at most 2 atoms.

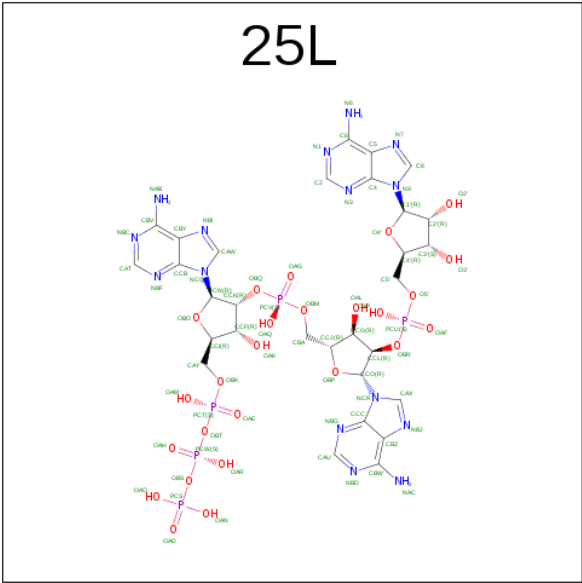
- Molecule 1 is a protein called Ribonuclease L.

Mol	Chain	Residues	Atoms					ZeroOcc	AltConf	Trace
1	A	672	Total	C	N	O	S	0	0	0
			5352	3358	945	1027	22			
1	B	672	Total	C	N	O	S	0	0	0
			5352	3358	945	1027	22			
1	C	671	Total	C	N	O	S	0	0	0
			5345	3354	944	1025	22			
1	D	672	Total	C	N	O	S	0	0	0
			5348	3355	944	1027	22			

There are 20 discrepancies between the modelled and reference sequences:

Chain	Residue	Modelled	Actual	Comment	Reference
A	16	GLY	-	EXPRESSION TAG	UNP A5H025
A	17	ALA	-	EXPRESSION TAG	UNP A5H025
A	18	MET	-	EXPRESSION TAG	UNP A5H025
A	19	ASP	-	EXPRESSION TAG	UNP A5H025
A	20	PRO	-	EXPRESSION TAG	UNP A5H025
B	16	GLY	-	EXPRESSION TAG	UNP A5H025
B	17	ALA	-	EXPRESSION TAG	UNP A5H025
B	18	MET	-	EXPRESSION TAG	UNP A5H025
B	19	ASP	-	EXPRESSION TAG	UNP A5H025
B	20	PRO	-	EXPRESSION TAG	UNP A5H025
C	16	GLY	-	EXPRESSION TAG	UNP A5H025
C	17	ALA	-	EXPRESSION TAG	UNP A5H025
C	18	MET	-	EXPRESSION TAG	UNP A5H025
C	19	ASP	-	EXPRESSION TAG	UNP A5H025
C	20	PRO	-	EXPRESSION TAG	UNP A5H025
D	16	GLY	-	EXPRESSION TAG	UNP A5H025
D	17	ALA	-	EXPRESSION TAG	UNP A5H025
D	18	MET	-	EXPRESSION TAG	UNP A5H025
D	19	ASP	-	EXPRESSION TAG	UNP A5H025
D	20	PRO	-	EXPRESSION TAG	UNP A5H025

- Molecule 2 is [[(2R,3R,4R,5R)-5-(6-AMINOPURIN-9-YL)-4-[[[(2R,3R,4R,5R)-5-(6-AMINO PURIN-9-YL)-4-[[[(2R,3S,4R,5R)-5-(6-AMINOPURIN-9-YL)-3,4-DIHYDROXY-OXOLAN -2-YL]METHOXY-HYDROXY-PHOSPHORYL]OXY-3-HYDROXY-OXOLAN-2-YL]ME THOXY-HYDROXY-PHOSPHORYL]OXY-3-HYDROXY-OXOLAN-2-YL]METHOXY-H YDROXY-PHOSPHORYL] PHOSPHONO HYDROGEN PHOSPHATE (three-letter code: 25L) (formula: C<sub>30</sub>H<sub>40</sub>N<sub>15</sub>O<sub>25</sub>P<sub>5</sub>).



Mol	Chain	Residues	Atoms					ZeroOcc	AltConf
2	A	1	Total	C	N	O	P	0	0
			75	30	15	25	5		
2	B	1	Total	C	N	O	P	0	0
			75	30	15	25	5		
2	C	1	Total	C	N	O	P	0	0
			75	30	15	25	5		
2	D	1	Total	C	N	O	P	0	0
			75	30	15	25	5		

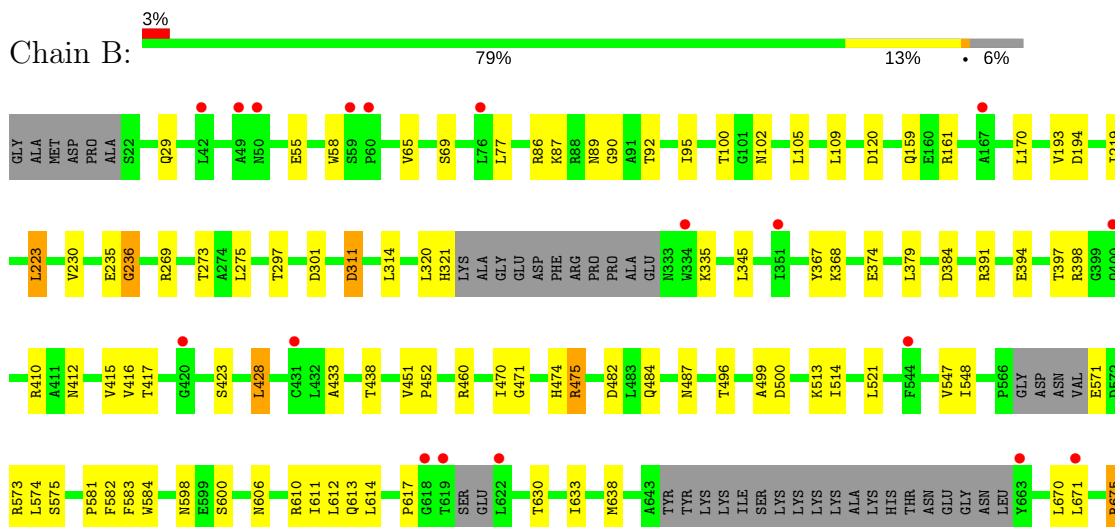
### 3 Residue-property plots

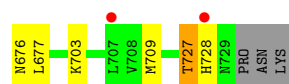
These plots are drawn for all protein, RNA and DNA chains in the entry. The first graphic for a chain summarises the proportions of the various outlier classes displayed in the second graphic. The second graphic shows the sequence view annotated by issues in geometry and electron density. Residues are color-coded according to the number of geometric quality criteria for which they contain at least one outlier: green = 0, yellow = 1, orange = 2 and red = 3 or more. A red dot above a residue indicates a poor fit to the electron density ( $RSRZ > 2$ ). Stretches of 2 or more consecutive residues without any outlier are shown as a green connector. Residues present in the sample, but not in the model, are shown in grey.

#### • Molecule 1: Ribonuclease L

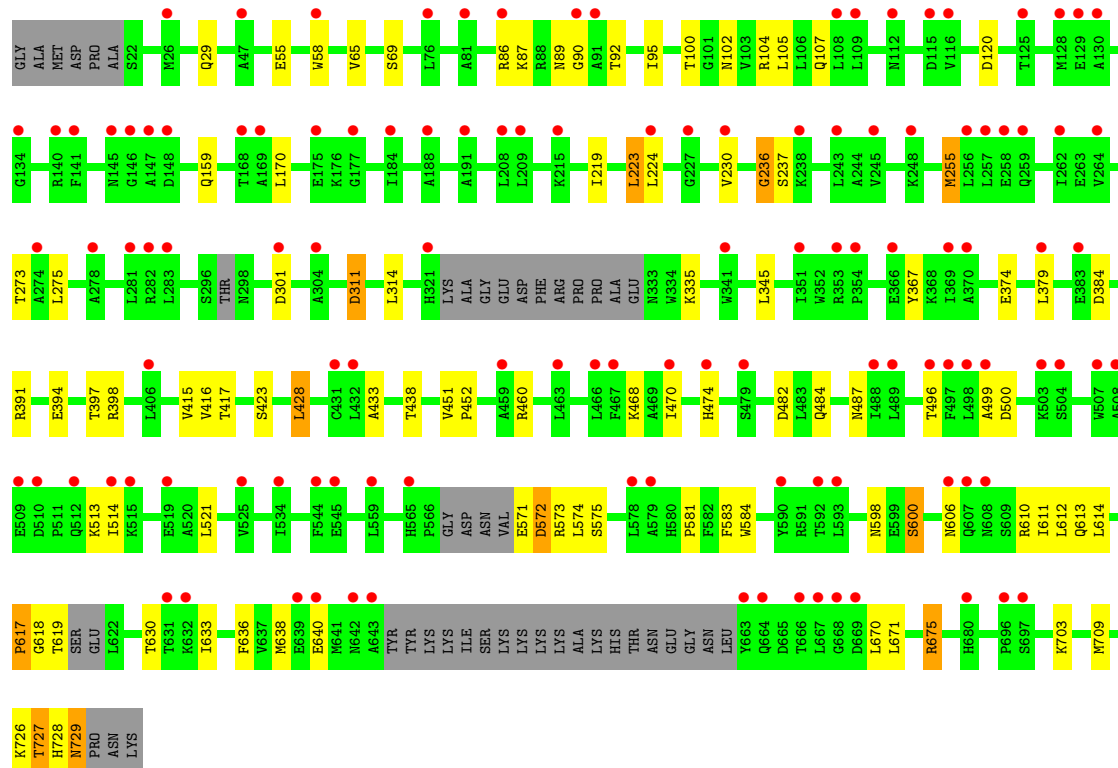
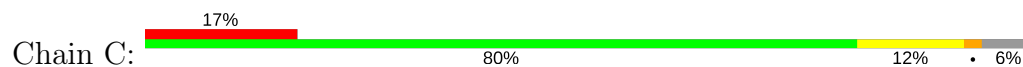


#### • Molecule 1: Ribonuclease L

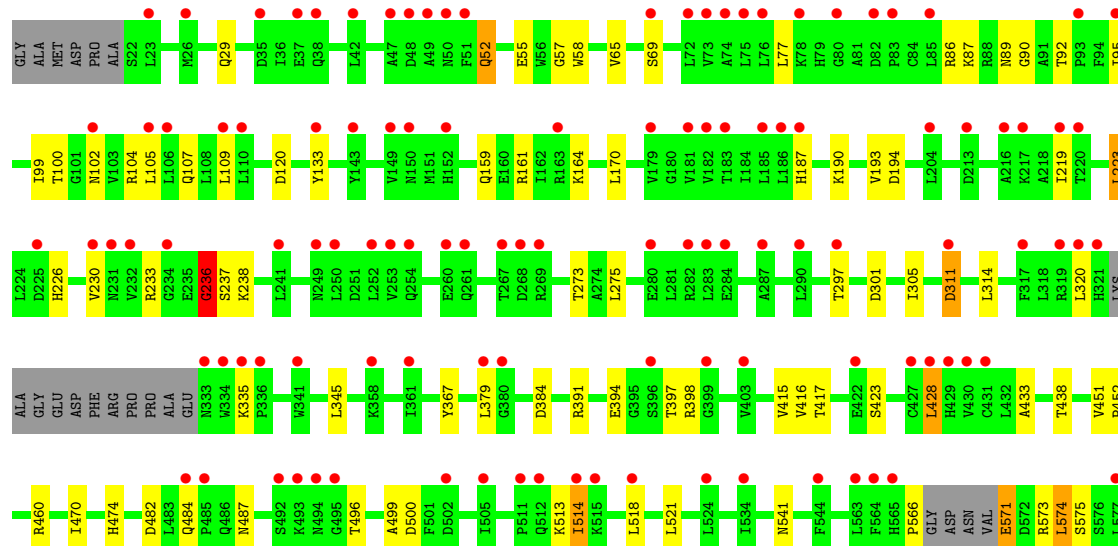
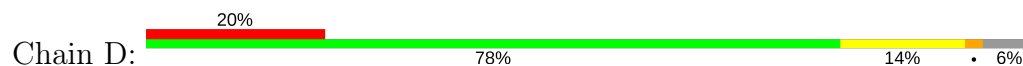




• Molecule 1: Ribonuclease L



• Molecule 1: Ribonuclease L





## 4 Data and refinement statistics

Property	Value	Source
Space group	P 1 21 1	Depositor
Cell constants a, b, c, $\alpha$ , $\beta$ , $\gamma$	59.79Å 111.97Å 268.46Å 90.00° 90.03° 90.00°	Depositor
Resolution (Å)	49.70 – 3.27 49.73 – 3.27	Depositor EDS
% Data completeness (in resolution range)	94.1 (49.70-3.27) 92.8 (49.73-3.27)	Depositor EDS
$R_{merge}$	(Not available)	Depositor
$R_{sym}$	(Not available)	Depositor
$\langle I/\sigma(I) \rangle$ <sup>1</sup>	1.30 (at 3.25Å)	Xtriage
Refinement program	REFMAC 5.7.0032	Depositor
R, $R_{free}$	0.230 , 0.289 0.229 , 0.256	Depositor DCC
$R_{free}$ test set	1596 reflections (3.22%)	DCC
Wilson B-factor (Å <sup>2</sup> )	93.7	Xtriage
Anisotropy	0.395	Xtriage
Bulk solvent $k_{sol}$ (e/Å <sup>3</sup> ), $B_{sol}$ (Å <sup>2</sup> )	0.29 , 53.1	EDS
L-test for twinning <sup>2</sup>	$\langle  L  \rangle = 0.45$ , $\langle L^2 \rangle = 0.27$	Xtriage
Estimated twinning fraction	0.398 for h,-k,-l	Xtriage
Reported twinning fraction	0.476 for H, K, L 0.524 for -H, -K, L	Depositor
Outliers	0 of 51181 reflections	Xtriage
$F_o, F_c$ correlation	0.91	EDS
Total number of atoms	21697	wwPDB-VP
Average B, all atoms (Å <sup>2</sup> )	129.0	wwPDB-VP

Xtriage's analysis on translational NCS is as follows: *The largest off-origin peak in the Patterson function is 3.15% of the height of the origin peak. No significant pseudotranslation is detected.*

<sup>1</sup>Intensities estimated from amplitudes.

<sup>2</sup>Theoretical values of  $\langle |L| \rangle$ ,  $\langle L^2 \rangle$  for acentric reflections are 0.5, 0.333 respectively for untwinned datasets, and 0.375, 0.2 for perfectly twinned datasets.



## 5 Model quality [i](#)

### 5.1 Standard geometry [i](#)

Bond lengths and bond angles in the following residue types are not validated in this section: 25L

The Z score for a bond length (or angle) is the number of standard deviations the observed value is removed from the expected value. A bond length (or angle) with  $|Z| > 5$  is considered an outlier worth inspection. RMSZ is the root-mean-square of all Z scores of the bond lengths (or angles).

Mol	Chain	Bond lengths		Bond angles	
		RMSZ	$\# Z  > 5$	RMSZ	$\# Z  > 5$
1	A	0.55	0/5445	0.69	4/7349 (0.1%)
1	B	0.53	0/5445	0.68	3/7349 (0.0%)
1	C	0.45	0/5437	0.66	5/7336 (0.1%)
1	D	0.45	0/5441	0.67	5/7345 (0.1%)
All	All	0.50	0/21768	0.68	17/29379 (0.1%)

Chiral center outliers are detected by calculating the chiral volume of a chiral center and verifying if the center is modelled as a planar moiety or with the opposite hand. A planarity outlier is detected by checking planarity of atoms in a peptide group, atoms in a mainchain group or atoms of a sidechain that are expected to be planar.

Mol	Chain	#Chirality outliers	#Planarity outliers
1	A	0	1
1	C	0	2
1	D	0	2
All	All	0	5

There are no bond length outliers.

The worst 5 of 17 bond angle outliers are listed below:

Mol	Chain	Res	Type	Atoms	Z	Observed(°)	Ideal(°)
1	B	236	GLY	N-CA-C	-9.08	90.39	113.10
1	A	236	GLY	N-CA-C	-6.94	95.75	113.10
1	D	236	GLY	N-CA-C	-6.89	95.87	113.10
1	C	236	GLY	N-CA-C	-6.84	96.01	113.10
1	B	69	SER	N-CA-CB	-6.65	100.53	110.50

There are no chirality outliers.

All (5) planarity outliers are listed below:

Mol	Chain	Res	Type	Group
1	A	499	ALA	Peptide
1	C	236	GLY	Peptide
1	C	572	ASP	Peptide
1	D	236	GLY	Peptide
1	D	571	GLU	Peptide

## 5.2 Too-close contacts

In the following table, the Non-H and H(model) columns list the number of non-hydrogen atoms and hydrogen atoms in the chain respectively. The H(added) column lists the number of hydrogen atoms added and optimized by MolProbity. The Clashes column lists the number of clashes within the asymmetric unit, whereas Symm-Clashes lists symmetry related clashes.

Mol	Chain	Non-H	H(model)	H(added)	Clashes	Symm-Clashes
1	A	5352	0	5268	53	0
1	B	5352	0	5268	44	0
1	C	5345	0	5260	49	0
1	D	5348	0	5257	74	0
2	A	75	0	34	0	0
2	B	75	0	34	4	0
2	C	75	0	34	3	0
2	D	75	0	34	7	0
All	All	21697	0	21189	208	0

The all-atom clashscore is defined as the number of clashes found per 1000 atoms (including hydrogen atoms). The all-atom clashscore for this structure is 5.

The worst 5 of 208 close contacts within the same asymmetric unit are listed below, sorted by their clash magnitude.

Atom-1	Atom-2	Interatomic distance (Å)	Clash overlap (Å)
1:A:512:GLN:O	1:A:515:LYS:HG2	1.47	1.13
1:C:618:GLY:O	1:C:619:THR:OG1	1.85	0.93
1:D:613:GLN:O	1:D:613:GLN:NE2	2.06	0.87
1:C:571:GLU:OE1	1:C:572:ASP:N	2.12	0.82
1:D:613:GLN:HG3	1:D:614:LEU:N	2.00	0.76

There are no symmetry-related clashes.

## 5.3 Torsion angles [i](#)

### 5.3.1 Protein backbone [i](#)

In the following table, the Percentiles column shows the percent Ramachandran outliers of the chain as a percentile score with respect to all X-ray entries followed by that with respect to entries of similar resolution.

The Analysed column shows the number of residues for which the backbone conformation was analysed, and the total number of residues.

Mol	Chain	Analysed	Favoured	Allowed	Outliers	Percentiles	
1	A	662/717 (92%)	634 (96%)	28 (4%)	0	100	100
1	B	662/717 (92%)	632 (96%)	29 (4%)	1 (0%)	51	82
1	C	659/717 (92%)	630 (96%)	28 (4%)	1 (0%)	51	82
1	D	662/717 (92%)	635 (96%)	27 (4%)	0	100	100
All	All	2645/2868 (92%)	2531 (96%)	112 (4%)	2 (0%)	55	86

All (2) Ramachandran outliers are listed below:

Mol	Chain	Res	Type
1	B	301	ASP
1	C	301	ASP

### 5.3.2 Protein sidechains [i](#)

In the following table, the Percentiles column shows the percent sidechain outliers of the chain as a percentile score with respect to all X-ray entries followed by that with respect to entries of similar resolution.

The Analysed column shows the number of residues for which the sidechain conformation was analysed, and the total number of residues.

Mol	Chain	Analysed	Rotameric	Outliers	Percentiles	
1	A	578/617 (94%)	540 (93%)	38 (7%)	19	54
1	B	578/617 (94%)	541 (94%)	37 (6%)	20	55
1	C	577/617 (94%)	540 (94%)	37 (6%)	20	55
1	D	577/617 (94%)	542 (94%)	35 (6%)	22	57
All	All	2310/2468 (94%)	2163 (94%)	147 (6%)	20	55

5 of 147 residues with a non-rotameric sidechain are listed below:

Mol	Chain	Res	Type
1	B	600	SER
1	C	275	LEU
1	D	521	LEU
1	B	611	ILE
1	B	727	THR

Some sidechains can be flipped to improve hydrogen bonding and reduce clashes. 5 of 28 such sidechains are listed below:

Mol	Chain	Res	Type
1	B	608	ASN
1	C	385	GLN
1	D	541	ASN
1	C	38	GLN
1	C	159	GLN

### 5.3.3 RNA [i](#)

There are no RNA molecules in this entry.

## 5.4 Non-standard residues in protein, DNA, RNA chains [i](#)

There are no non-standard protein/DNA/RNA residues in this entry.

## 5.5 Carbohydrates [i](#)

There are no carbohydrates in this entry.

## 5.6 Ligand geometry [i](#)

4 ligands are modelled in this entry.

In the following table, the Counts columns list the number of bonds (or angles) for which Mogul statistics could be retrieved, the number of bonds (or angles) that are observed in the model and the number of bonds (or angles) that are defined in the chemical component dictionary. The Link column lists molecule types, if any, to which the group is linked. The Z score for a bond length (or angle) is the number of standard deviations the observed value is removed from the expected value. A bond length (or angle) with  $|Z| > 2$  is considered an outlier worth inspection. RMSZ is the root-mean-square of all Z scores of the bond lengths (or angles).

Mol	Type	Chain	Res	Link	Bond lengths			Bond angles		
					Counts	RMSZ	# Z  > 2	Counts	RMSZ	# Z  > 2
2	25L	A	1000	-	69,83,83	2.37	8 (11%)	73,130,130	3.99	17 (23%)
2	25L	B	1000	-	69,83,83	2.67	13 (18%)	73,130,130	3.48	21 (28%)
2	25L	C	1000	-	69,83,83	2.77	12 (17%)	73,130,130	3.58	13 (17%)
2	25L	D	1000	-	69,83,83	2.72	10 (14%)	73,130,130	3.43	13 (17%)

In the following table, the Chirals column lists the number of chiral outliers, the number of chiral centers analysed, the number of these observed in the model and the number defined in the chemical component dictionary. Similar counts are reported in the Torsion and Rings columns. '-' means no outliers of that kind were identified.

Mol	Type	Chain	Res	Link	Chirals	Torsions	Rings
2	25L	A	1000	-	-	0/40/100/100	0/9/9/9
2	25L	B	1000	-	-	0/40/100/100	0/9/9/9
2	25L	C	1000	-	-	0/40/100/100	0/9/9/9
2	25L	D	1000	-	-	0/40/100/100	0/9/9/9

The worst 5 of 43 bond length outliers are listed below:

Mol	Chain	Res	Type	Atoms	Z	Observed(Å)	Ideal(Å)
2	C	1000	25L	CBZ-NBJ	-2.16	1.32	1.39
2	B	1000	25L	CBY-NBI	-2.10	1.32	1.39
2	B	1000	25L	C5-C4	2.17	1.45	1.40
2	C	1000	25L	O4'-C1'	2.20	1.44	1.41
2	B	1000	25L	CBZ-CCC	2.39	1.45	1.40

The worst 5 of 64 bond angle outliers are listed below:

Mol	Chain	Res	Type	Atoms	Z	Observed(°)	Ideal(°)
2	A	1000	25L	NBF-CAT-NBC	-21.18	110.41	128.86
2	C	1000	25L	NBF-CAT-NBC	-17.98	113.20	128.86
2	A	1000	25L	NBG-CAU-NBD	-16.56	114.43	128.86
2	C	1000	25L	N3-C2-N1	-16.19	114.76	128.86
2	B	1000	25L	N3-C2-N1	-16.12	114.82	128.86

There are no chirality outliers.

There are no torsion outliers.

There are no ring outliers.

3 monomers are involved in 14 short contacts:

Mol	Chain	Res	Type	Clashes	Symm-Clashes
2	B	1000	25L	4	0
2	C	1000	25L	3	0
2	D	1000	25L	7	0

## 5.7 Other polymers [i](#)

There are no such residues in this entry.

## 5.8 Polymer linkage issues [i](#)

There are no chain breaks in this entry.

## 6 Fit of model and data [i](#)

### 6.1 Protein, DNA and RNA chains [i](#)

In the following table, the column labelled ‘#RSRZ> 2’ contains the number (and percentage) of RSRZ outliers, followed by percent RSRZ outliers for the chain as percentile scores relative to all X-ray entries and entries of similar resolution. The OWAB column contains the minimum, median, 95<sup>th</sup> percentile and maximum values of the occupancy-weighted average B-factor per residue. The column labelled ‘Q< 0.9’ lists the number of (and percentage) of residues with an average occupancy less than 0.9.

Mol	Chain	Analysed	<RSRZ>	#RSRZ>2	OWAB(Å <sup>2</sup> )	Q<0.9
1	A	672/717 (93%)	0.03	18 (2%) 55 52	51, 99, 141, 177	0
1	B	672/717 (93%)	0.12	20 (2%) 51 48	52, 98, 150, 217	0
1	C	671/717 (93%)	0.85	119 (17%) 2 1	88, 152, 208, 260	0
1	D	672/717 (93%)	0.98	145 (21%) 1 1	94, 152, 213, 285	0
All	All	2687/2868 (93%)	0.50	302 (11%) 6 5	51, 128, 197, 285	0

The worst 5 of 302 RSRZ outliers are listed below:

Mol	Chain	Res	Type	RSRZ
1	C	147	ALA	16.2
1	C	498	LEU	13.6
1	C	146	GLY	12.0
1	D	72	LEU	10.9
1	C	607	GLN	10.7

### 6.2 Non-standard residues in protein, DNA, RNA chains [i](#)

There are no non-standard protein/DNA/RNA residues in this entry.

### 6.3 Carbohydrates [i](#)

There are no carbohydrates in this entry.

### 6.4 Ligands [i](#)

In the following table, the Atoms column lists the number of modelled atoms in the group and the number defined in the chemical component dictionary. LLDF column lists the quality of electron density of the group with respect to its neighbouring residues in protein, DNA or RNA chains. The B-factors column lists the minimum, median, 95<sup>th</sup> percentile and maximum values of B factors

of atoms in the group. The column labelled 'Q < 0.9' lists the number of atoms with occupancy less than 0.9.

Mol	Type	Chain	Res	Atoms	RSCC	RSR	LLDF	B-factors( $\text{\AA}^2$ )	Q<0.9
2	25L	A	1000	75/75	0.94	0.21	-0.28	62,86,117,126	0
2	25L	D	1000	75/75	0.85	0.18	-0.59	85,138,168,212	0
2	25L	B	1000	75/75	0.95	0.18	-0.85	49,79,110,130	0
2	25L	C	1000	75/75	0.83	0.18	-1.02	88,137,230,247	0

## 6.5 Other polymers [i](#)

There are no such residues in this entry.