



# Full wwPDB X-ray Structure Validation Report ⓘ

Feb 15, 2017 – 02:19 am GMT

PDB ID : 1O6H  
Title : SQUALENE-HOPENE CYCLASE  
Authors : Lenhart, A.; Reinert, D.J.; Weihofen, W.A.; Aebi, J.D.; Dehmlow, H.; Morand, O.H.; Schulz, G.E.  
Deposited on : 2002-10-03  
Resolution : 2.80 Å(reported)

This is a Full wwPDB X-ray Structure Validation Report for a publicly released PDB entry.

We welcome your comments at [validation@mail.wwpdb.org](mailto:validation@mail.wwpdb.org)

A user guide is available at

<http://wwpdb.org/validation/2016/XrayValidationReportHelp>

with specific help available everywhere you see the ⓘ symbol.

---

The following versions of software and data (see [references ⓘ](#)) were used in the production of this report:

MolProbity : 4.02b-467  
Mogul : 1.7.2 (RC1), CSD as538be (2017)  
Xtriage (Phenix) : 1.9-1692  
EDS : trunk28620  
Percentile statistics : 20161228.v01 (using entries in the PDB archive December 28th 2016)  
Refmac : 5.8.0135  
CCP4 : 6.5.0  
Ideal geometry (proteins) : Engh & Huber (2001)  
Ideal geometry (DNA, RNA) : Parkinson et al. (1996)  
Validation Pipeline (wwPDB-VP) : recalc28949

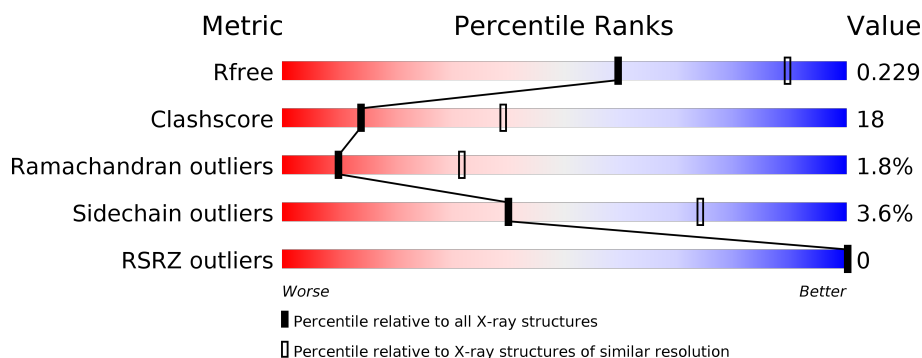
# 1 Overall quality at a glance ⓘ

The following experimental techniques were used to determine the structure:

*X-RAY DIFFRACTION*

The reported resolution of this entry is 2.80 Å.

Percentile scores (ranging between 0-100) for global validation metrics of the entry are shown in the following graphic. The table shows the number of entries on which the scores are based.



Metric	Whole archive (#Entries)	Similar resolution (#Entries, resolution range(Å))
$R_{free}$	100719	2583 (2.80-2.80)
Clashscore	112137	3033 (2.80-2.80)
Ramachandran outliers	110173	2983 (2.80-2.80)
Sidechain outliers	110143	2985 (2.80-2.80)
RSRZ outliers	101464	2610 (2.80-2.80)

The table below summarises the geometric issues observed across the polymeric chains and their fit to the electron density. The red, orange, yellow and green segments on the lower bar indicate the fraction of residues that contain outliers for  $\geq 3$ , 2, 1 and 0 types of geometric quality criteria. A grey segment represents the fraction of residues that are not modelled. The numeric value for each fraction is indicated below the corresponding segment, with a dot representing fractions  $\leq 5\%$ . The upper red bar (where present) indicates the fraction of residues that have poor fit to the electron density. The numeric value is given above the bar.

Mol	Chain	Length	Quality of chain
1	A	631	<div> <div style="width: 63%; background-color: green;"></div> <div style="width: 32%; background-color: yellow;"></div> <div style="width: 5%; background-color: orange;"></div> <div style="width: 2%; background-color: red;"></div> <div style="width: 0%; background-color: grey;"></div> </div> <div>63% 32% . .</div>
1	B	631	<div> <div style="width: 67%; background-color: green;"></div> <div style="width: 29%; background-color: yellow;"></div> <div style="width: 4%; background-color: orange;"></div> <div style="width: 0%; background-color: red;"></div> <div style="width: 0%; background-color: grey;"></div> </div> <div>67% 29% . .</div>
1	C	631	<div> <div style="width: 63%; background-color: green;"></div> <div style="width: 32%; background-color: yellow;"></div> <div style="width: 5%; background-color: orange;"></div> <div style="width: 2%; background-color: red;"></div> <div style="width: 0%; background-color: grey;"></div> </div> <div>63% 32% . .</div>

The following table lists non-polymeric compounds, carbohydrate monomers and non-standard residues in protein, DNA, RNA chains that are outliers for geometric or electron-density-fit criteria:

Mol	Type	Chain	Res	Chirality	Geometry	Clashes	Electron density
2	C8E	A	700	-	-	-	X
2	C8E	B	700	-	-	-	X
2	C8E	C	700	-	-	-	X

## 2 Entry composition [i](#)

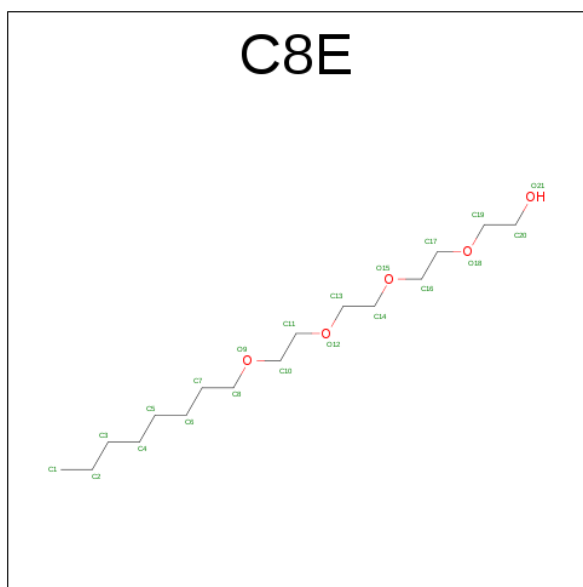
There are 4 unique types of molecules in this entry. The entry contains 15381 atoms, of which 0 are hydrogens and 0 are deuteriums.

In the tables below, the ZeroOcc column contains the number of atoms modelled with zero occupancy, the AltConf column contains the number of residues with at least one atom in alternate conformation and the Trace column contains the number of residues modelled with at most 2 atoms.

- Molecule 1 is a protein called SQUALENE-HOPENE CYCLASE.

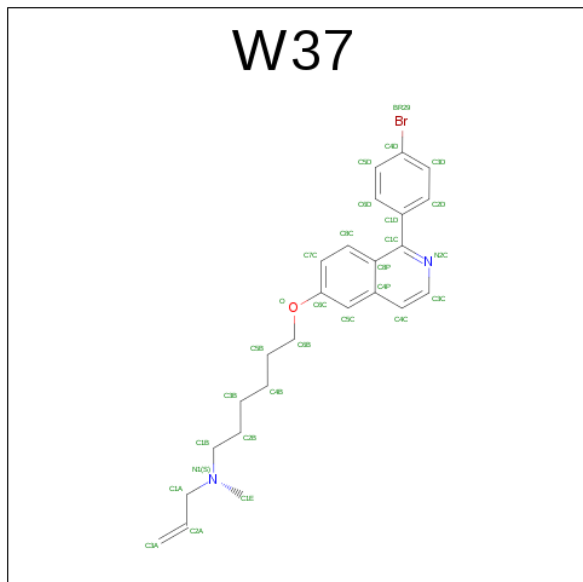
Mol	Chain	Residues	Atoms					ZeroOcc	AltConf	Trace
1	A	620	Total	C	N	O	S	0	0	1
			4964	3188	859	897	20			
1	B	620	Total	C	N	O	S	0	0	1
			4964	3188	859	897	20			
1	C	620	Total	C	N	O	S	0	0	1
			4964	3188	859	897	20			

- Molecule 2 is (HYDROXYETHYLOXY)TRI(ETHYLOXY)OCTANE (three-letter code: C8E) (formula:  $C_{16}H_{34}O_5$ ).



Mol	Chain	Residues	Atoms			ZeroOcc	AltConf
2	A	1	Total	C	O	0	0
			21	16	5		
2	B	1	Total	C	O	0	0
			21	16	5		
2	C	1	Total	C	O	0	0
			21	16	5		

- Molecule 3 is N-(6-{[1-(4-BROMOPHENYL)ISOQUINOLIN-6-YL]OXY}HEXYL)-N-METHYLPROP-2-EN-1-AMINE (three-letter code: W37) (formula: C<sub>25</sub>H<sub>29</sub>BrN<sub>2</sub>O).



Mol	Chain	Residues	Atoms					ZeroOcc	AltConf
3	A	1	Total	Br	C	N	O	0	0
			29	1	25	2	1		
3	B	1	Total	Br	C	N	O	0	0
			29	1	25	2	1		
3	C	1	Total	Br	C	N	O	0	0
			29	1	25	2	1		

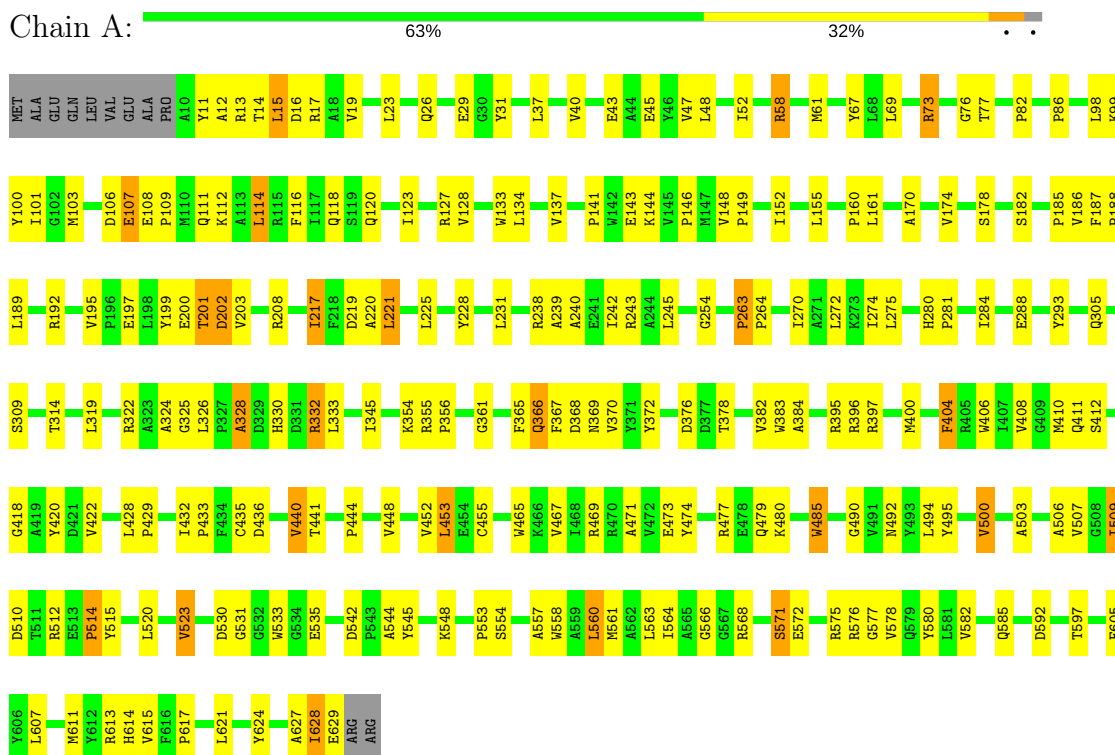
- Molecule 4 is water.

Mol	Chain	Residues	Atoms		ZeroOcc	AltConf
4	A	111	Total	O	0	0
			111	111		
4	B	117	Total	O	0	0
			117	117		
4	C	111	Total	O	0	0
			111	111		

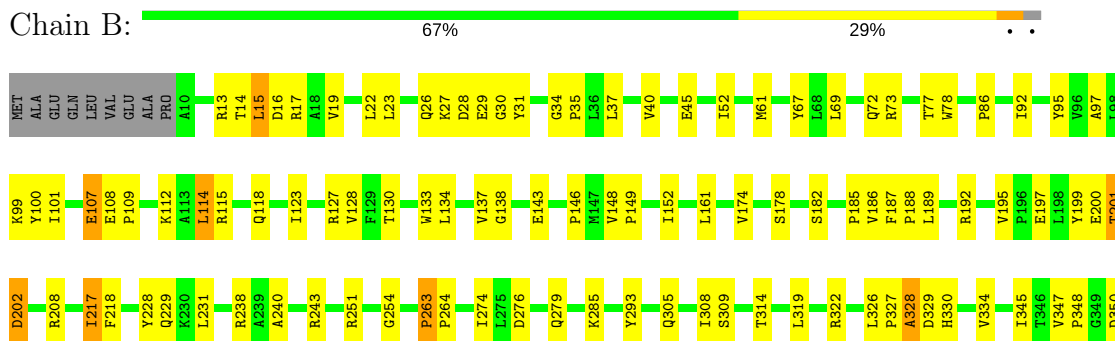
### 3 Residue-property plots

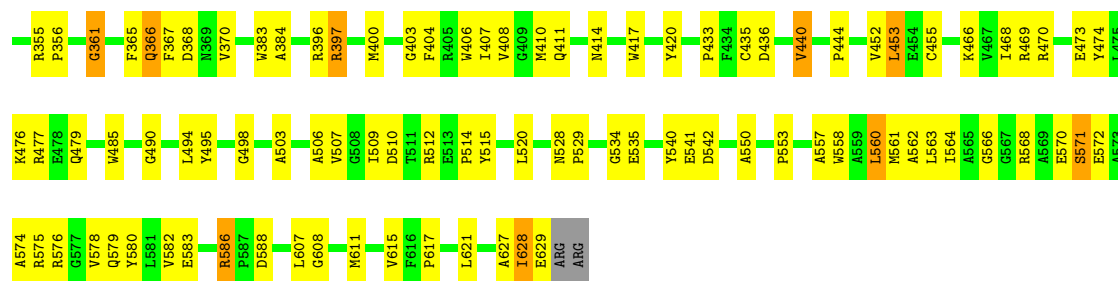
These plots are drawn for all protein, RNA and DNA chains in the entry. The first graphic for a chain summarises the proportions of the various outlier classes displayed in the second graphic. The second graphic shows the sequence view annotated by issues in geometry and electron density. Residues are color-coded according to the number of geometric quality criteria for which they contain at least one outlier: green = 0, yellow = 1, orange = 2 and red = 3 or more. A red dot above a residue indicates a poor fit to the electron density ( $RSRZ > 2$ ). Stretches of 2 or more consecutive residues without any outlier are shown as a green connector. Residues present in the sample, but not in the model, are shown in grey.

#### • Molecule 1: SQUALENE-HOPENE CYCLASE



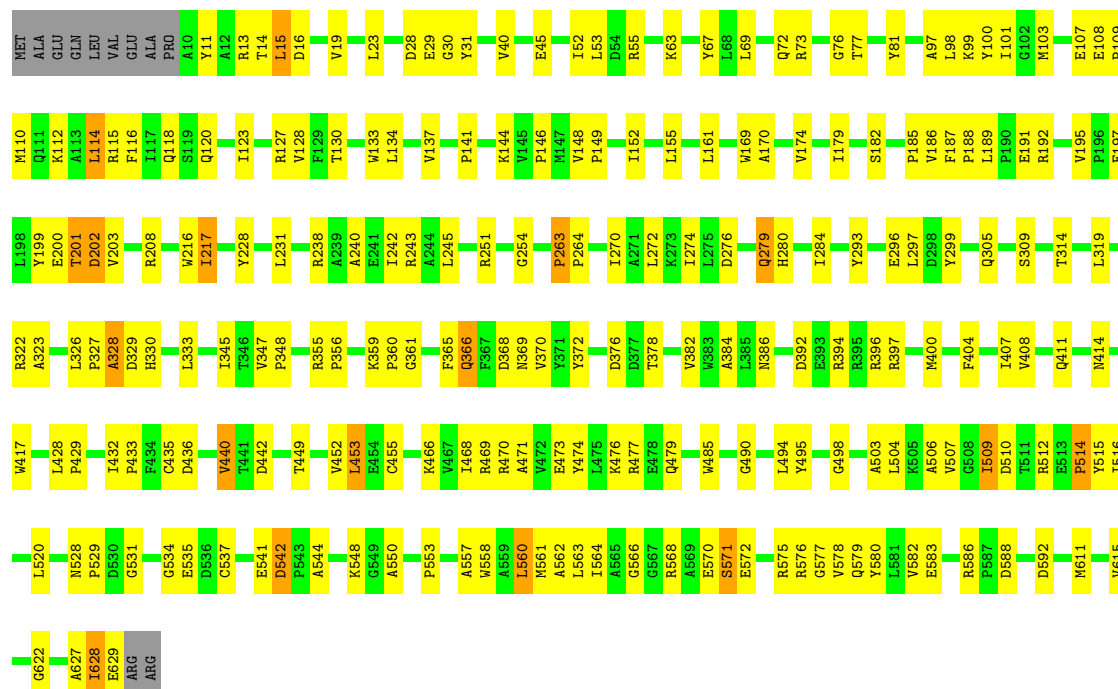
#### • Molecule 1: SQUALENE-HOPENE CYCLASE





• Molecule 1: SQUALENE-HOPENE CYCLASE

Chain C: 63% 32%



## 4 Data and refinement statistics

Property	Value	Source
Space group	P 32 2 1	Depositor
Cell constants a, b, c, $\alpha$ , $\beta$ , $\gamma$	141.08Å 141.08Å 244.51Å 90.00° 90.00° 120.00°	Depositor
Resolution (Å)	25.00 – 2.80 38.66 – 2.80	Depositor EDS
% Data completeness (in resolution range)	78.7 (25.00-2.80) 78.7 (38.66-2.80)	Depositor EDS
$R_{merge}$	0.07	Depositor
$R_{sym}$	(Not available)	Depositor
$\langle I/\sigma(I) \rangle$ <sup>1</sup>	2.58 (at 2.81Å)	Xtriage
Refinement program	CNS 1.1	Depositor
R, $R_{free}$	0.174 , 0.233 0.172 , 0.229	Depositor DCC
$R_{free}$ test set	1977 reflections (3.72%)	DCC
Wilson B-factor (Å <sup>2</sup> )	40.3	Xtriage
Anisotropy	0.481	Xtriage
Bulk solvent $k_{sol}$ (e/Å <sup>3</sup> ), $B_{sol}$ (Å <sup>2</sup> )	0.27 , 68.1	EDS
L-test for twinning <sup>2</sup>	$\langle  L  \rangle = 0.45$ , $\langle L^2 \rangle = 0.28$	Xtriage
Estimated twinning fraction	0.000 for -h,-k,l	Xtriage
$F_o, F_c$ correlation	0.95	EDS
Total number of atoms	15381	wwPDB-VP
Average B, all atoms (Å <sup>2</sup> )	48.0	wwPDB-VP

Xtriage's analysis on translational NCS is as follows: *The analyses of the Patterson function reveals a significant off-origin peak that is 26.05 % of the origin peak, indicating pseudo translational symmetry. The chance of finding a peak of this or larger height randomly in a structure without pseudo translational symmetry is equal to 2.8288e-03. The detected translational NCS is most likely also responsible for the elevated intensity ratio.*

<sup>1</sup>Intensities estimated from amplitudes.

<sup>2</sup>Theoretical values of  $\langle |L| \rangle$ ,  $\langle L^2 \rangle$  for acentric reflections are 0.5, 0.333 respectively for untwinned datasets, and 0.375, 0.2 for perfectly twinned datasets.



## 5 Model quality [i](#)

### 5.1 Standard geometry [i](#)

Bond lengths and bond angles in the following residue types are not validated in this section: C8E, W37

The Z score for a bond length (or angle) is the number of standard deviations the observed value is removed from the expected value. A bond length (or angle) with  $|Z| > 5$  is considered an outlier worth inspection. RMSZ is the root-mean-square of all Z scores of the bond lengths (or angles).

Mol	Chain	Bond lengths		Bond angles	
		RMSZ	$\# Z  > 5$	RMSZ	$\# Z  > 5$
1	A	0.51	0/5117	0.68	0/6967
1	B	0.52	0/5117	0.69	0/6967
1	C	0.51	0/5117	0.67	0/6967
All	All	0.51	0/15351	0.68	0/20901

There are no bond length outliers.

There are no bond angle outliers.

There are no chirality outliers.

There are no planarity outliers.

### 5.2 Too-close contacts [i](#)

In the following table, the Non-H and H(model) columns list the number of non-hydrogen atoms and hydrogen atoms in the chain respectively. The H(added) column lists the number of hydrogen atoms added and optimized by MolProbity. The Clashes column lists the number of clashes within the asymmetric unit, whereas Symm-Clashes lists symmetry related clashes.

Mol	Chain	Non-H	H(model)	H(added)	Clashes	Symm-Clashes
1	A	4964	0	4787	185	0
1	B	4964	0	4787	155	0
1	C	4964	0	4787	181	0
2	A	21	0	34	0	0
2	B	21	0	34	3	0
2	C	21	0	34	2	0
3	A	29	0	29	0	0
3	B	29	0	29	0	0
3	C	29	0	29	0	0
4	A	111	0	0	17	0

*Continued on next page...*

*Continued from previous page...*

Mol	Chain	Non-H	H(model)	H(added)	Clashes	Symm-Clashes
4	B	117	0	0	16	0
4	C	111	0	0	17	0
All	All	15381	0	14550	521	0

The all-atom clashscore is defined as the number of clashes found per 1000 atoms (including hydrogen atoms). The all-atom clashscore for this structure is 18.

All (521) close contacts within the same asymmetric unit are listed below, sorted by their clash magnitude.

Atom-1	Atom-2	Interatomic distance (Å)	Clash overlap (Å)
1:C:217:ILE:HD12	1:C:217:ILE:H	1.07	1.16
1:B:217:ILE:H	1:B:217:ILE:HD12	1.11	1.10
1:A:627:ALA:O	1:A:628:ILE:HG13	1.54	1.04
1:B:627:ALA:O	1:B:628:ILE:HG13	1.58	1.01
1:C:627:ALA:O	1:C:628:ILE:HG13	1.60	0.98
1:A:217:ILE:HD12	1:A:217:ILE:H	1.29	0.97
1:C:217:ILE:CD1	1:C:217:ILE:H	1.82	0.93
1:B:251:ARG:HH21	2:B:700:C8E:H131	1.36	0.91
1:B:396:ARG:HG2	1:B:400:MET:HE2	1.52	0.91
1:B:217:ILE:H	1:B:217:ILE:CD1	1.86	0.89
1:C:217:ILE:HD12	1:C:217:ILE:N	1.89	0.87
1:A:254:GLY:HA3	1:A:368:ASP:OD2	1.74	0.86
1:A:326:LEU:HD13	1:A:330:HIS:CD2	2.11	0.85
1:A:396:ARG:HG2	1:A:400:MET:HE2	1.58	0.85
1:A:520:LEU:HD11	1:A:566:GLY:HA3	1.59	0.84
1:B:217:ILE:N	1:B:217:ILE:HD12	1.93	0.81
1:A:397:ARG:HH11	1:A:397:ARG:HB2	1.44	0.81
1:A:440:VAL:HB	4:A:2071:HOH:O	1.79	0.81
1:B:345:ILE:HD12	1:B:370:VAL:HA	1.62	0.81
1:B:108:GLU:HB3	1:B:109:PRO:HD3	1.61	0.80
1:B:345:ILE:HD11	4:B:2064:HOH:O	1.81	0.80
1:C:509:ILE:HG21	4:C:2094:HOH:O	1.80	0.80
1:C:396:ARG:HG2	1:C:400:MET:HE2	1.63	0.79
1:C:520:LEU:HD11	1:C:566:GLY:HA3	1.63	0.79
1:A:506:ALA:HA	4:A:2091:HOH:O	1.81	0.79
1:B:397:ARG:HB2	1:B:397:ARG:HH11	1.48	0.78
1:B:540:TYR:HA	4:B:2101:HOH:O	1.84	0.78
1:A:345:ILE:HD12	1:A:370:VAL:HA	1.66	0.77
1:C:628:ILE:HG22	1:C:629:GLU:N	1.99	0.77
1:B:520:LEU:HD11	1:B:566:GLY:HA3	1.68	0.75
1:B:576:ARG:HG3	1:B:576:ARG:HH11	1.52	0.75

*Continued on next page...*

*Continued from previous page...*

Atom-1	Atom-2	Interatomic distance (Å)	Clash overlap (Å)
1:A:480:LYS:HE2	4:A:2085:HOH:O	1.85	0.75
1:C:397:ARG:HB2	1:C:397:ARG:HH11	1.51	0.75
1:A:628:ILE:HG22	1:A:629:GLU:N	2.00	0.74
1:C:326:LEU:HD13	1:C:330:HIS:CD2	2.22	0.74
1:A:149:PRO:O	1:A:152:ILE:HG22	1.87	0.74
1:A:523:VAL:HG11	1:A:563:LEU:CD2	2.17	0.74
1:A:576:ARG:HH11	1:A:576:ARG:HG3	1.52	0.74
1:B:149:PRO:O	1:B:152:ILE:HG22	1.88	0.74
1:C:345:ILE:HD12	1:C:370:VAL:HA	1.69	0.73
1:C:576:ARG:HG3	1:C:576:ARG:HH11	1.53	0.73
1:A:473:GLU:O	1:A:477:ARG:HG3	1.89	0.72
1:B:322:ARG:NH2	1:B:328:ALA:HB2	2.04	0.72
1:B:628:ILE:HG22	1:B:629:GLU:N	2.06	0.71
1:B:251:ARG:NH2	2:B:700:C8E:H131	2.06	0.70
1:C:73:ARG:HD3	1:C:77:THR:O	1.91	0.70
1:C:404:PHE:O	1:C:408:VAL:HG23	1.92	0.70
1:A:490:GLY:HA3	1:A:495:TYR:CD2	2.27	0.69
1:B:185:PRO:HG3	1:B:274:ILE:HD11	1.75	0.69
1:A:322:ARG:NH2	1:A:328:ALA:HB2	2.08	0.68
1:C:509:ILE:HG22	1:C:510:ASP:N	2.08	0.68
1:A:514:PRO:HD2	4:A:2092:HOH:O	1.92	0.68
1:A:345:ILE:HD11	4:A:2052:HOH:O	1.93	0.68
1:A:435:CYS:SG	1:A:440:VAL:HG21	2.34	0.68
1:B:254:GLY:HA3	1:B:368:ASP:OD2	1.94	0.68
1:A:397:ARG:NH1	1:A:397:ARG:HB2	2.08	0.68
1:C:23:LEU:HD11	1:C:326:LEU:HD11	1.77	0.67
1:C:152:ILE:HD11	1:C:161:LEU:O	1.94	0.67
1:A:578:VAL:O	1:A:582:VAL:HG23	1.94	0.67
1:C:13:ARG:HG2	1:C:13:ARG:HH11	1.60	0.66
1:C:466:LYS:O	1:C:470:ARG:HG3	1.96	0.66
1:B:123:ILE:HD11	1:B:134:LEU:HD13	1.78	0.66
1:B:571:SER:O	1:B:575:ARG:HG3	1.96	0.65
1:C:149:PRO:O	1:C:152:ILE:HG22	1.95	0.65
1:A:509:ILE:HG21	4:A:2093:HOH:O	1.95	0.65
1:C:514:PRO:HD2	4:C:2093:HOH:O	1.96	0.65
1:B:138:GLY:HA2	4:B:2025:HOH:O	1.96	0.65
1:B:238:ARG:HG2	1:B:238:ARG:HH11	1.62	0.65
1:B:123:ILE:CD1	1:B:134:LEU:HD13	2.26	0.65
1:A:152:ILE:HD11	1:A:161:LEU:O	1.97	0.65
1:B:473:GLU:O	1:B:477:ARG:HG3	1.96	0.65
1:A:217:ILE:CD1	1:A:217:ILE:H	2.05	0.64

*Continued on next page...*

*Continued from previous page...*

Atom-1	Atom-2	Interatomic distance (Å)	Clash overlap (Å)
1:C:473:GLU:O	1:C:477:ARG:HG3	1.96	0.64
1:B:560:LEU:O	1:B:564:ILE:HG13	1.97	0.64
1:A:509:ILE:HG22	1:A:510:ASP:N	2.13	0.64
1:A:221:LEU:O	1:A:221:LEU:HD12	1.98	0.64
1:A:469:ARG:HB2	1:A:469:ARG:NH1	2.11	0.64
1:C:578:VAL:O	1:C:582:VAL:HG23	1.98	0.64
1:C:397:ARG:HG2	4:C:2069:HOH:O	1.96	0.64
1:B:330:HIS:O	1:B:334:VAL:HG23	1.98	0.64
1:C:322:ARG:NH2	1:C:328:ALA:HB2	2.12	0.63
1:C:571:SER:O	1:C:575:ARG:HG3	1.99	0.63
1:C:435:CYS:SG	1:C:440:VAL:HG21	2.37	0.63
1:A:99:LYS:NZ	1:A:197:GLU:OE2	2.33	0.62
1:A:471:ALA:O	1:A:474:TYR:HB3	2.00	0.62
1:B:541:GLU:HG2	4:B:2099:HOH:O	2.00	0.62
1:A:148:VAL:HG11	1:A:174:VAL:HG13	1.81	0.62
1:B:128:VAL:HG13	1:B:146:PRO:HD2	1.81	0.62
1:C:326:LEU:HD22	1:C:330:HIS:HD2	1.64	0.62
1:C:238:ARG:O	1:C:242:ILE:HG13	2.00	0.61
1:B:509:ILE:HG22	1:B:510:ASP:N	2.16	0.61
1:C:516:ILE:HD11	4:C:2094:HOH:O	1.99	0.61
1:A:123:ILE:CD1	1:A:134:LEU:HD13	2.31	0.61
1:C:490:GLY:HA3	1:C:495:TYR:CD2	2.35	0.61
1:B:490:GLY:HA3	1:B:495:TYR:CD2	2.36	0.61
1:B:23:LEU:HD11	1:B:326:LEU:HD11	1.83	0.61
1:C:435:CYS:HA	4:C:2074:HOH:O	2.01	0.60
1:C:560:LEU:O	1:C:564:ILE:HG13	2.01	0.60
1:A:319:LEU:HD21	1:A:384:ALA:HA	1.83	0.60
1:A:322:ARG:HD3	1:A:333:LEU:HD13	1.83	0.60
1:C:123:ILE:HD11	1:C:134:LEU:HD13	1.82	0.60
1:A:322:ARG:HH21	1:A:328:ALA:HB2	1.66	0.60
1:B:99:LYS:HD3	1:B:195:VAL:HG12	1.83	0.60
1:A:123:ILE:HD11	1:A:134:LEU:HD13	1.83	0.60
1:A:14:THR:OG1	1:A:582:VAL:HG13	2.02	0.59
1:B:14:THR:OG1	1:B:582:VAL:HG13	2.02	0.59
1:C:123:ILE:CD1	1:C:134:LEU:HD13	2.32	0.59
1:C:254:GLY:HA3	1:C:368:ASP:OD2	2.02	0.59
1:C:185:PRO:HG3	1:C:274:ILE:HD11	1.85	0.59
1:B:470:ARG:HD3	4:B:2069:HOH:O	2.02	0.59
1:B:366:GLN:H	1:B:366:GLN:CD	2.05	0.59
1:A:503:ALA:O	1:A:506:ALA:N	2.36	0.59
1:B:579:GLN:O	1:B:583:GLU:HG3	2.03	0.59

*Continued on next page...*

*Continued from previous page...*

Atom-1	Atom-2	Interatomic distance (Å)	Clash overlap (Å)
1:A:367:PHE:HB2	4:A:2060:HOH:O	2.04	0.58
1:A:23:LEU:HD11	1:A:326:LEU:HD11	1.84	0.58
1:C:99:LYS:NZ	1:C:197:GLU:OE2	2.33	0.58
1:A:99:LYS:HD3	1:A:195:VAL:HG12	1.84	0.58
1:A:560:LEU:O	1:A:564:ILE:HG13	2.03	0.58
1:A:465:TRP:CZ2	1:A:467:VAL:HG21	2.39	0.58
1:B:97:ALA:O	1:B:101:ILE:HG13	2.03	0.58
1:A:410:MET:O	1:A:422:VAL:HG22	2.04	0.57
1:A:479:GLN:OE1	1:A:515:TYR:HB2	2.03	0.57
1:C:99:LYS:HD3	1:C:195:VAL:HG12	1.84	0.57
1:A:238:ARG:HG2	1:A:238:ARG:HH11	1.68	0.57
1:C:128:VAL:HG13	1:C:146:PRO:HD2	1.86	0.57
1:C:541:GLU:HG3	4:C:2098:HOH:O	2.04	0.57
1:B:558:TRP:HD1	1:B:561:MET:HE2	1.70	0.57
1:C:191:GLU:HG3	4:C:2039:HOH:O	2.05	0.57
1:C:238:ARG:HH11	1:C:238:ARG:HG2	1.70	0.57
1:B:469:ARG:NH1	1:B:469:ARG:HB2	2.20	0.57
1:A:571:SER:O	1:A:575:ARG:HG3	2.04	0.57
1:A:238:ARG:O	1:A:242:ILE:HG13	2.05	0.57
1:A:13:ARG:HH11	1:A:13:ARG:HG2	1.69	0.56
1:C:152:ILE:HD12	1:C:155:LEU:HD12	1.87	0.56
1:A:45:GLU:HG2	1:A:133:TRP:CE2	2.40	0.56
1:B:397:ARG:NH1	1:B:397:ARG:HB2	2.20	0.56
1:C:185:PRO:HG3	1:C:274:ILE:CD1	2.35	0.56
1:C:558:TRP:HD1	1:C:561:MET:HE2	1.69	0.56
1:A:576:ARG:NH1	1:A:576:ARG:HG3	2.20	0.56
1:A:73:ARG:HD3	1:A:77:THR:O	2.05	0.56
1:B:152:ILE:HD11	1:B:161:LEU:O	2.04	0.56
1:B:319:LEU:HD21	1:B:384:ALA:HA	1.87	0.56
1:C:29:GLU:H	1:C:29:GLU:CD	2.08	0.56
1:B:99:LYS:NZ	1:B:197:GLU:OE2	2.38	0.56
1:A:128:VAL:HG13	1:A:146:PRO:HD2	1.87	0.56
1:A:128:VAL:HG23	1:A:436:ASP:CG	2.26	0.56
1:A:420:TYR:HB2	4:A:2079:HOH:O	2.06	0.56
1:C:469:ARG:HB2	1:C:469:ARG:NH1	2.21	0.56
1:A:185:PRO:HG3	1:A:274:ILE:HD11	1.88	0.56
1:A:406:TRP:O	1:A:410:MET:HG2	2.06	0.56
1:A:509:ILE:HG22	1:A:510:ASP:H	1.69	0.56
1:B:115:ARG:HG3	1:B:115:ARG:HH11	1.71	0.55
1:B:322:ARG:HH21	1:B:328:ALA:HB2	1.67	0.55
1:C:411:GLN:HB2	1:C:417:TRP:CZ2	2.41	0.55

*Continued on next page...*

*Continued from previous page...*

Atom-1	Atom-2	Interatomic distance (Å)	Clash overlap (Å)
1:A:245:LEU:O	1:A:245:LEU:HD12	2.07	0.55
1:B:293:TYR:O	1:B:305:GLN:HG3	2.07	0.55
1:C:251:ARG:HH21	2:C:700:C8E:H131	1.69	0.55
1:A:494:LEU:HD12	1:A:535:GLU:HB2	1.88	0.55
1:B:29:GLU:H	1:B:29:GLU:CD	2.10	0.55
1:C:279:GLN:HG3	4:C:2052:HOH:O	2.06	0.55
1:B:494:LEU:HD12	1:B:535:GLU:HB2	1.87	0.55
1:C:509:ILE:HG22	1:C:510:ASP:H	1.69	0.55
1:A:507:VAL:HG23	1:A:509:ILE:HG12	1.90	0.54
1:A:98:LEU:HB3	1:A:103:MET:HE2	1.88	0.54
1:B:127:ARG:N	1:B:208:ARG:HH12	2.05	0.54
1:C:479:GLN:OE1	1:C:515:TYR:HB2	2.08	0.54
1:A:239:ALA:O	1:A:243:ARG:HG2	2.07	0.54
1:B:240:ALA:O	1:B:243:ARG:HB2	2.08	0.54
1:C:628:ILE:CG2	1:C:629:GLU:N	2.70	0.54
1:A:557:ALA:O	1:A:561:MET:HG3	2.07	0.54
1:A:146:PRO:HB3	1:A:433:PRO:HB2	1.89	0.54
1:B:114:LEU:O	1:B:118:GLN:HG3	2.08	0.54
1:B:208:ARG:NE	4:B:2033:HOH:O	2.41	0.54
1:B:557:ALA:O	1:B:561:MET:HG3	2.08	0.54
1:B:201:THR:HG23	1:B:202:ASP:N	2.22	0.54
1:C:442:ASP:HB3	4:C:2078:HOH:O	2.08	0.54
1:C:528:ASN:HB3	1:C:529:PRO:HD2	1.89	0.54
1:A:106:ASP:O	1:A:111:GLN:HG2	2.08	0.53
1:C:14:THR:OG1	1:C:582:VAL:HG13	2.08	0.53
1:C:576:ARG:HG3	1:C:576:ARG:NH1	2.22	0.53
1:C:319:LEU:HD21	1:C:384:ALA:HA	1.90	0.53
1:B:186:VAL:O	1:B:188:PRO:HD3	2.07	0.53
1:C:366:GLN:H	1:C:366:GLN:CD	2.10	0.53
1:C:397:ARG:HB2	1:C:397:ARG:NH1	2.23	0.53
1:A:31:TYR:HB2	1:A:314:THR:OG1	2.09	0.53
1:A:485:TRP:HD1	4:A:2086:HOH:O	1.91	0.53
1:C:326:LEU:HD22	1:C:330:HIS:CD2	2.43	0.53
1:C:557:ALA:O	1:C:561:MET:HG3	2.09	0.53
1:B:146:PRO:HB3	1:B:433:PRO:HB2	1.90	0.52
1:A:510:ASP:OD2	1:A:512:ARG:HB3	2.08	0.52
1:C:186:VAL:O	1:C:188:PRO:HD3	2.09	0.52
1:C:108:GLU:HB2	1:C:109:PRO:HD3	1.91	0.52
1:C:504:LEU:HD13	4:C:2094:HOH:O	2.10	0.52
1:C:396:ARG:NH1	1:C:400:MET:HE2	2.25	0.52
1:A:558:TRP:HD1	1:A:561:MET:HE2	1.74	0.52

*Continued on next page...*

*Continued from previous page...*

Atom-1	Atom-2	Interatomic distance (Å)	Clash overlap (Å)
1:B:115:ARG:HG3	1:B:115:ARG:NH1	2.25	0.52
1:C:40:VAL:HG12	1:C:67:TYR:CE2	2.45	0.52
1:B:576:ARG:NH1	1:B:576:ARG:HG3	2.19	0.52
1:B:479:GLN:OE1	1:B:515:TYR:HB2	2.10	0.52
1:B:208:ARG:HD3	4:B:2033:HOH:O	2.10	0.51
1:C:452:VAL:O	1:C:455:CYS:HB3	2.11	0.51
1:A:270:ILE:O	1:A:274:ILE:HG12	2.09	0.51
1:B:326:LEU:HD13	1:B:330:HIS:CD2	2.46	0.51
1:C:115:ARG:HH11	1:C:115:ARG:HG3	1.76	0.51
1:C:148:VAL:HG11	1:C:174:VAL:HG13	1.92	0.51
1:C:503:ALA:O	1:C:506:ALA:N	2.43	0.51
1:A:186:VAL:O	1:A:188:PRO:HD3	2.10	0.51
1:A:123:ILE:HG21	1:A:199:TYR:CE1	2.46	0.51
1:C:296:GLU:HA	1:C:296:GLU:OE1	2.11	0.51
1:C:369:ASN:HD21	1:C:372:TYR:HB2	1.76	0.51
1:B:534:GLY:HA3	1:B:550:ALA:O	2.11	0.51
1:C:586:ARG:NH1	1:C:588:ASP:OD1	2.44	0.51
1:B:123:ILE:HG21	1:B:199:TYR:CE1	2.46	0.51
1:B:414:ASN:HD21	1:B:444:PRO:HG2	1.76	0.51
1:B:40:VAL:HG12	1:B:67:TYR:CE2	2.47	0.50
1:B:309:SER:HB3	1:B:365:PHE:CZ	2.47	0.50
1:B:31:TYR:HB2	1:B:314:THR:OG1	2.11	0.50
1:C:263:PRO:HB2	1:C:264:PRO:CD	2.41	0.50
1:C:52:ILE:HD12	1:C:187:PHE:CD2	2.46	0.50
1:A:355:ARG:N	1:A:356:PRO:HD3	2.27	0.50
1:A:29:GLU:H	1:A:29:GLU:CD	2.15	0.50
1:C:97:ALA:O	1:C:101:ILE:HG13	2.11	0.50
1:B:228:TYR:HD1	1:B:231:LEU:HD12	1.77	0.50
1:B:563:LEU:HD12	1:B:568:ARG:HB2	1.92	0.50
1:C:128:VAL:HG23	1:C:436:ASP:CG	2.32	0.50
1:C:396:ARG:HG2	1:C:400:MET:CE	2.36	0.50
1:C:476:LYS:HD3	1:C:515:TYR:CZ	2.46	0.50
1:A:563:LEU:HD12	1:A:568:ARG:HB2	1.92	0.50
1:B:52:ILE:HD12	1:B:187:PHE:CD2	2.47	0.50
1:B:285:LYS:HE2	4:B:2047:HOH:O	2.11	0.49
1:C:146:PRO:HB3	1:C:433:PRO:HB2	1.93	0.49
1:C:563:LEU:HD12	1:C:568:ARG:HB2	1.93	0.49
1:A:108:GLU:HB2	1:A:109:PRO:HD3	1.93	0.49
1:A:611:MET:O	1:A:615:VAL:HG23	2.11	0.49
1:B:541:GLU:HG3	4:B:2006:HOH:O	2.11	0.49
1:A:383:TRP:CD1	1:A:383:TRP:C	2.85	0.49

*Continued on next page...*



*Continued from previous page...*

Atom-1	Atom-2	Interatomic distance (Å)	Clash overlap (Å)
1:A:490:GLY:CA	1:A:495:TYR:CD2	2.94	0.49
1:B:435:CYS:SG	1:B:440:VAL:HG21	2.53	0.49
1:A:396:ARG:NH1	1:A:400:MET:CE	2.75	0.49
1:B:61:MET:HB3	1:B:101:ILE:HG23	1.94	0.49
1:A:19:VAL:HG12	1:A:23:LEU:HD12	1.94	0.49
1:A:77:THR:CB	1:A:86:PRO:HB3	2.42	0.49
1:A:201:THR:HG23	1:A:202:ASP:N	2.27	0.49
1:B:326:LEU:HD22	1:B:330:HIS:CD2	2.47	0.49
1:B:77:THR:OG1	1:B:86:PRO:HB3	2.12	0.49
1:A:309:SER:HB3	1:A:365:PHE:CZ	2.47	0.49
1:B:411:GLN:HB2	1:B:417:TRP:CZ2	2.48	0.49
1:B:503:ALA:O	1:B:506:ALA:N	2.46	0.48
1:B:608:GLY:HA2	4:B:2107:HOH:O	2.13	0.48
1:A:86:PRO:HB2	1:A:116:PHE:CE2	2.48	0.48
1:A:319:LEU:CD2	1:A:384:ALA:HA	2.43	0.48
1:A:40:VAL:HG12	1:A:67:TYR:CE2	2.48	0.48
1:C:611:MET:O	1:C:615:VAL:HG23	2.14	0.48
1:C:355:ARG:N	1:C:356:PRO:HD3	2.28	0.48
1:A:114:LEU:O	1:A:118:GLN:HG3	2.13	0.48
1:A:100:TYR:O	1:A:192:ARG:NH2	2.47	0.48
1:B:528:ASN:HB3	1:B:529:PRO:HD2	1.95	0.48
1:B:361:GLY:O	1:B:403:GLY:HA2	2.13	0.48
1:A:395:ARG:NH2	4:A:2067:HOH:O	2.47	0.48
1:A:396:ARG:NH1	1:A:400:MET:HE2	2.27	0.48
1:B:229:GLN:HG2	4:B:2035:HOH:O	2.13	0.48
1:B:123:ILE:HD11	1:B:134:LEU:CD1	2.42	0.48
1:C:98:LEU:HB3	1:C:103:MET:HE2	1.95	0.48
1:A:572:GLU:OE2	1:A:575:ARG:HD3	2.13	0.48
1:B:143:GLU:CD	1:B:143:GLU:H	2.17	0.48
1:C:327:PRO:HD2	1:C:330:HIS:HB2	1.96	0.48
1:A:485:TRP:HA	4:A:2086:HOH:O	2.14	0.48
1:A:15:LEU:O	1:A:19:VAL:HG23	2.14	0.47
1:C:11:TYR:O	1:C:14:THR:HB	2.14	0.47
1:C:309:SER:HB3	1:C:365:PHE:CZ	2.49	0.47
1:C:509:ILE:CG2	1:C:510:ASP:N	2.76	0.47
1:A:137:VAL:HB	1:A:189:LEU:HG	1.96	0.47
1:A:469:ARG:CZ	1:A:469:ARG:HB2	2.44	0.47
1:A:202:ASP:OD1	1:A:202:ASP:N	2.47	0.47
1:C:13:ARG:HH11	1:C:13:ARG:CG	2.26	0.47
1:C:228:TYR:HD1	1:C:231:LEU:HD12	1.80	0.47
1:A:11:TYR:CD1	1:A:12:ALA:N	2.83	0.47

*Continued on next page...*



*Continued from previous page...*

Atom-1	Atom-2	Interatomic distance (Å)	Clash overlap (Å)
1:A:127:ARG:N	1:A:208:ARG:HH12	2.12	0.47
1:A:503:ALA:O	1:A:506:ALA:HB3	2.14	0.47
1:B:263:PRO:HB2	1:B:264:PRO:CD	2.44	0.47
1:C:192:ARG:HG2	1:C:192:ARG:HH11	1.80	0.47
1:C:327:PRO:C	1:C:329:ASP:H	2.18	0.47
1:B:17:ARG:HH21	1:C:548:LYS:HG2	1.79	0.47
1:B:611:MET:O	1:B:615:VAL:HG23	2.15	0.47
1:C:15:LEU:O	1:C:19:VAL:HG23	2.15	0.47
1:A:440:VAL:HG13	1:A:440:VAL:O	2.14	0.47
1:B:355:ARG:N	1:B:356:PRO:HD3	2.29	0.47
1:A:605:PHE:HE2	1:A:607:LEU:HD21	1.80	0.47
1:B:202:ASP:N	1:B:202:ASP:OD1	2.47	0.46
1:B:308:ILE:HA	4:B:2051:HOH:O	2.15	0.46
1:C:345:ILE:HD12	1:C:370:VAL:HG12	1.96	0.46
1:A:580:TYR:C	1:A:580:TYR:CD1	2.88	0.46
1:C:471:ALA:O	1:C:474:TYR:HB3	2.16	0.46
1:C:541:GLU:HG2	4:C:2106:HOH:O	2.15	0.46
1:A:13:ARG:HH22	1:A:17:ARG:CZ	2.28	0.46
1:A:396:ARG:O	1:A:400:MET:HG3	2.16	0.46
1:B:148:VAL:HG11	1:B:174:VAL:HG13	1.97	0.46
1:B:452:VAL:O	1:B:455:CYS:HB3	2.16	0.46
1:C:14:THR:HG23	4:C:2103:HOH:O	2.15	0.46
1:C:201:THR:HG23	1:C:202:ASP:N	2.30	0.46
1:B:507:VAL:HG23	1:B:509:ILE:HG12	1.97	0.46
1:A:523:VAL:HG11	1:A:563:LEU:HD21	1.98	0.46
1:C:141:PRO:HA	4:C:2033:HOH:O	2.15	0.46
1:A:293:TYR:O	1:A:305:GLN:HG3	2.16	0.46
1:B:578:VAL:O	1:B:582:VAL:HG23	2.16	0.46
1:C:31:TYR:HB2	1:C:314:THR:OG1	2.15	0.46
1:B:185:PRO:HG3	1:B:274:ILE:CD1	2.44	0.46
1:A:617:PRO:O	1:A:621:LEU:HG	2.16	0.46
1:C:123:ILE:HD11	1:C:134:LEU:CD1	2.46	0.46
1:A:469:ARG:O	1:A:473:GLU:HG2	2.17	0.45
1:A:544:ALA:O	1:A:548:LYS:HD3	2.16	0.45
1:B:404:PHE:O	1:B:408:VAL:HG23	2.17	0.45
1:B:572:GLU:OE2	1:B:575:ARG:HD3	2.16	0.45
1:C:507:VAL:HG23	1:C:509:ILE:HG12	1.97	0.45
1:C:542:ASP:OD2	1:C:544:ALA:HB3	2.16	0.45
1:A:531:GLY:O	1:A:577:GLY:HA2	2.15	0.45
1:C:469:ARG:O	1:C:473:GLU:HG2	2.16	0.45
1:B:100:TYR:O	1:B:192:ARG:NH2	2.49	0.45

*Continued on next page...*

*Continued from previous page...*

Atom-1	Atom-2	Interatomic distance (Å)	Clash overlap (Å)
1:B:367:PHE:HB2	4:B:2041:HOH:O	2.17	0.45
1:C:323:ALA:HB2	4:C:2056:HOH:O	2.17	0.45
1:A:366:GLN:CD	1:A:366:GLN:H	2.15	0.45
1:A:411:GLN:OE1	1:A:467:VAL:HG13	2.17	0.45
1:A:404:PHE:O	1:A:408:VAL:HG23	2.16	0.45
1:A:533:TRP:HB3	4:A:2097:HOH:O	2.15	0.45
1:B:19:VAL:HG12	1:B:23:LEU:HD12	1.99	0.45
1:B:476:LYS:HD3	1:B:515:TYR:CZ	2.52	0.45
1:A:73:ARG:HD3	1:A:73:ARG:N	2.31	0.45
1:B:397:ARG:HH11	1:B:397:ARG:CB	2.25	0.45
1:B:420:TYR:HB2	4:B:2071:HOH:O	2.16	0.45
1:B:509:ILE:HG22	1:B:510:ASP:H	1.80	0.45
1:C:293:TYR:O	1:C:305:GLN:HG3	2.16	0.45
1:C:396:ARG:NH1	1:C:400:MET:CE	2.79	0.45
1:C:429:PRO:O	1:C:432:ILE:HG12	2.16	0.45
1:A:345:ILE:CD1	1:A:370:VAL:HA	2.44	0.45
1:A:152:ILE:HD12	1:A:155:LEU:HD12	1.98	0.45
1:A:73:ARG:HD3	1:A:73:ARG:H	1.82	0.45
1:A:280:HIS:ND1	1:A:281:PRO:HD2	2.32	0.45
1:C:202:ASP:OD1	1:C:202:ASP:N	2.48	0.45
1:C:378:THR:O	1:C:382:VAL:HG23	2.17	0.45
1:C:392:ASP:OD1	1:C:394:ARG:HB3	2.17	0.45
1:A:263:PRO:HB2	1:A:264:PRO:HD3	2.00	0.44
1:A:263:PRO:HB2	1:A:264:PRO:CD	2.47	0.44
1:A:554:SER:OG	1:A:597:THR:HG21	2.17	0.44
1:A:605:PHE:CE2	1:A:607:LEU:HD21	2.52	0.44
1:B:26:GLN:HG2	1:B:27:LYS:O	2.17	0.44
1:B:586:ARG:NH1	1:B:588:ASP:OD1	2.49	0.44
1:A:228:TYR:HD1	1:A:231:LEU:HD12	1.82	0.44
1:B:563:LEU:HA	1:B:563:LEU:HD13	1.77	0.44
1:B:627:ALA:C	1:B:628:ILE:HG13	2.34	0.44
1:C:494:LEU:HD12	1:C:535:GLU:HB2	1.98	0.44
1:A:428:LEU:N	1:A:429:PRO:HD2	2.33	0.44
1:B:208:ARG:CD	4:B:2033:HOH:O	2.64	0.44
1:C:76:GLY:HA3	1:C:112:LYS:HB2	1.98	0.44
1:A:345:ILE:HD12	1:A:370:VAL:HG12	1.98	0.44
1:C:510:ASP:OD2	1:C:512:ARG:HB3	2.16	0.44
1:C:63:LYS:NZ	4:C:2017:HOH:O	2.51	0.44
1:B:466:LYS:O	1:B:470:ARG:HG3	2.18	0.44
1:C:115:ARG:NH1	1:C:115:ARG:HG3	2.32	0.44
1:C:137:VAL:HB	1:C:189:LEU:HG	1.99	0.44

*Continued on next page...*

*Continued from previous page...*

Atom-1	Atom-2	Interatomic distance (Å)	Clash overlap (Å)
1:A:202:ASP:O	1:A:203:VAL:C	2.56	0.44
1:A:490:GLY:HA3	1:A:495:TYR:CE2	2.53	0.44
1:A:509:ILE:CG2	1:A:510:ASP:N	2.80	0.44
1:B:347:VAL:HB	1:B:348:PRO:HD2	1.98	0.44
1:C:108:GLU:CB	1:C:109:PRO:HD3	2.47	0.44
1:C:531:GLY:O	1:C:577:GLY:HA2	2.17	0.44
1:C:53:LEU:O	1:C:55:ARG:HG3	2.18	0.44
1:A:452:VAL:O	1:A:455:CYS:HB3	2.18	0.44
1:C:280:HIS:O	1:C:284:ILE:HG12	2.18	0.44
1:C:553:PRO:HG2	1:C:592:ASP:O	2.18	0.44
1:A:412:SER:HA	1:A:422:VAL:HG13	2.00	0.44
1:A:76:GLY:HA3	1:A:112:LYS:HB2	1.99	0.44
1:C:45:GLU:HG2	1:C:133:TRP:CE2	2.52	0.44
1:B:474:TYR:HA	1:B:477:ARG:NH1	2.33	0.43
1:C:263:PRO:HB2	1:C:264:PRO:HD3	2.00	0.43
1:C:428:LEU:N	1:C:429:PRO:HD2	2.33	0.43
1:A:558:TRP:HA	1:A:561:MET:HE2	1.99	0.43
1:C:116:PHE:O	1:C:120:GLN:HG2	2.19	0.43
1:C:453:LEU:HD12	1:C:453:LEU:HA	1.86	0.43
1:A:178:SER:O	1:A:182:SER:HB2	2.18	0.43
1:A:378:THR:O	1:A:382:VAL:HG23	2.18	0.43
1:C:347:VAL:HB	1:C:348:PRO:HD2	1.99	0.43
1:A:61:MET:HB3	1:A:101:ILE:HG23	2.01	0.43
1:A:418:GLY:HA2	1:A:444:PRO:HA	2.00	0.43
1:B:553:PRO:HG3	4:B:2104:HOH:O	2.19	0.43
1:C:572:GLU:OE2	1:C:575:ARG:HD3	2.19	0.43
1:C:407:ILE:HG21	1:C:452:VAL:HG13	2.00	0.43
1:A:576:ARG:NH1	1:A:576:ARG:CG	2.81	0.43
1:B:580:TYR:CD1	1:B:580:TYR:C	2.91	0.43
1:A:326:LEU:HB3	1:A:330:HIS:HD2	1.83	0.43
1:B:319:LEU:CD2	1:B:384:ALA:HA	2.47	0.43
1:B:178:SER:O	1:B:182:SER:HB2	2.19	0.43
1:B:73:ARG:H	1:B:73:ARG:HD3	1.83	0.43
1:C:440:VAL:HG13	1:C:440:VAL:O	2.18	0.43
1:B:327:PRO:C	1:B:329:ASP:H	2.21	0.43
1:C:386:ASN:HA	1:C:396:ARG:NH1	2.34	0.43
1:C:535:GLU:HA	1:C:548:LYS:O	2.19	0.43
1:A:43:GLU:O	1:A:47:VAL:HG23	2.19	0.42
1:C:580:TYR:CD1	1:C:580:TYR:C	2.92	0.42
1:A:221:LEU:O	1:A:225:LEU:HG	2.19	0.42
1:C:114:LEU:O	1:C:118:GLN:HG3	2.19	0.42

*Continued on next page...*

*Continued from previous page...*

Atom-1	Atom-2	Interatomic distance (Å)	Clash overlap (Å)
1:A:37:LEU:O	1:A:607:LEU:HA	2.19	0.42
1:A:141:PRO:HG2	1:A:144:LYS:HG3	2.01	0.42
1:A:245:LEU:HD22	1:A:275:LEU:CD1	2.49	0.42
1:A:523:VAL:CG1	1:A:563:LEU:HD21	2.49	0.42
1:B:128:VAL:HG23	1:B:436:ASP:CG	2.39	0.42
1:B:15:LEU:O	1:B:19:VAL:HG23	2.20	0.42
1:B:127:ARG:HG3	1:B:130:THR:H	1.84	0.42
1:B:469:ARG:HB2	1:B:469:ARG:CZ	2.50	0.42
1:C:270:ILE:O	1:C:274:ILE:HG12	2.18	0.42
1:C:449:THR:HG22	1:C:453:LEU:HD22	2.00	0.42
1:A:48:LEU:HD22	1:A:137:VAL:HG11	2.00	0.42
1:A:280:HIS:HB2	4:A:2047:HOH:O	2.19	0.42
1:A:440:VAL:HG12	1:A:441:THR:HG23	2.01	0.42
1:B:406:TRP:O	1:B:410:MET:HG2	2.19	0.42
1:B:617:PRO:O	1:B:621:LEU:HG	2.20	0.42
1:C:127:ARG:HG3	1:C:130:THR:H	1.84	0.42
1:C:100:TYR:O	1:C:192:ARG:NH2	2.52	0.42
1:C:442:ASP:CB	4:C:2078:HOH:O	2.66	0.42
1:A:170:ALA:O	1:A:174:VAL:HG23	2.19	0.42
1:B:107:GLU:H	1:B:107:GLU:HG2	1.71	0.42
1:B:123:ILE:HD12	1:B:134:LEU:HD13	2.02	0.42
1:C:103:MET:HE3	1:C:110:MET:HG2	2.02	0.42
1:C:245:LEU:O	1:C:245:LEU:HD12	2.20	0.42
1:C:365:PHE:HB3	1:C:366:GLN:OE1	2.20	0.42
2:C:700:C8E:H32	2:C:700:C8E:O21	2.19	0.42
1:B:112:LYS:O	1:B:115:ARG:HB2	2.20	0.42
1:B:263:PRO:HB2	1:B:264:PRO:HD3	2.00	0.42
1:B:383:TRP:CD1	1:B:383:TRP:C	2.92	0.42
1:B:77:THR:CB	1:B:86:PRO:HB3	2.50	0.42
1:C:231:LEU:HD23	1:C:231:LEU:HA	1.84	0.42
1:A:433:PRO:HD2	4:A:2072:HOH:O	2.20	0.42
1:A:48:LEU:O	1:A:52:ILE:HG12	2.19	0.42
1:B:28:ASP:C	1:B:30:GLY:N	2.72	0.42
1:C:192:ARG:NH1	4:C:2040:HOH:O	2.48	0.42
1:A:143:GLU:CD	1:A:143:GLU:H	2.22	0.42
1:A:448:VAL:HG21	4:A:2080:HOH:O	2.19	0.42
1:B:137:VAL:HB	1:B:189:LEU:HG	2.02	0.42
1:C:240:ALA:O	1:C:243:ARG:HB2	2.20	0.42
1:C:272:LEU:HA	1:C:272:LEU:HD23	1.85	0.42
1:C:544:ALA:O	1:C:548:LYS:HD3	2.20	0.42
1:A:185:PRO:HG3	1:A:274:ILE:CD1	2.50	0.41

*Continued on next page...*

*Continued from previous page...*

Atom-1	Atom-2	Interatomic distance (Å)	Clash overlap (Å)
1:A:354:LYS:O	1:A:355:ARG:HG2	2.19	0.41
1:C:72:GLN:OE1	1:C:109:PRO:HB3	2.20	0.41
1:C:274:ILE:HD12	1:C:274:ILE:HG23	1.82	0.41
1:A:118:GLN:C	1:A:120:GLN:H	2.24	0.41
1:A:453:LEU:HD12	1:A:453:LEU:HA	1.79	0.41
1:A:52:ILE:HD12	1:A:187:PHE:CD2	2.55	0.41
1:C:474:TYR:HA	1:C:477:ARG:NH1	2.35	0.41
1:B:218:PHE:HB3	1:B:433:PRO:HD3	2.03	0.41
1:A:520:LEU:HD11	1:A:566:GLY:CA	2.39	0.41
1:A:82:PRO:HG2	4:A:2105:HOH:O	2.19	0.41
1:C:322:ARG:HD3	1:C:333:LEU:HD13	2.00	0.41
1:C:404:PHE:C	1:C:404:PHE:CD1	2.94	0.41
1:C:469:ARG:HB2	1:C:469:ARG:CZ	2.49	0.41
1:C:576:ARG:NH1	1:C:576:ARG:CG	2.83	0.41
1:A:613:ARG:HG3	1:A:614:HIS:CE1	2.56	0.41
1:C:202:ASP:O	1:C:203:VAL:C	2.59	0.41
1:C:366:GLN:N	1:C:366:GLN:CD	2.73	0.41
1:A:369:ASN:HD21	1:A:372:TYR:HB2	1.85	0.41
1:A:429:PRO:O	1:A:432:ILE:HG12	2.19	0.41
1:B:326:LEU:HD22	1:B:330:HIS:HD2	1.84	0.41
1:B:509:ILE:CG2	1:B:510:ASP:N	2.82	0.41
1:C:322:ARG:HD3	1:C:333:LEU:CD1	2.51	0.41
1:A:137:VAL:HA	1:A:187:PHE:O	2.20	0.41
1:A:13:ARG:HH22	1:A:17:ARG:NH2	2.19	0.41
1:A:58:ARG:HE	1:A:58:ARG:HB3	1.71	0.41
1:B:13:ARG:HH22	1:B:17:ARG:CZ	2.33	0.41
1:B:192:ARG:HH11	1:B:192:ARG:HG2	1.86	0.41
1:B:350:ASP:OD1	2:B:700:C8E:H132	2.20	0.41
1:B:510:ASP:OD2	1:B:512:ARG:HB3	2.20	0.41
1:C:563:LEU:HD13	1:C:563:LEU:HA	1.81	0.41
1:A:155:LEU:HD13	1:A:160:PRO:O	2.21	0.41
1:A:192:ARG:HH11	1:A:192:ARG:HG2	1.86	0.41
1:A:545:TYR:HA	1:A:548:LYS:HB2	2.03	0.41
1:A:553:PRO:HG2	1:A:592:ASP:O	2.20	0.41
1:A:280:HIS:CG	1:A:281:PRO:HD2	2.55	0.41
1:B:570:GLU:O	1:B:571:SER:O	2.39	0.41
1:B:73:ARG:NH1	1:B:73:ARG:HG2	2.36	0.41
1:C:359:LYS:HA	1:C:360:PRO:HD2	1.85	0.41
1:B:45:GLU:HG2	1:B:133:TRP:CE2	2.55	0.41
1:B:469:ARG:O	1:B:473:GLU:HG2	2.21	0.41
1:B:520:LEU:HD21	1:B:562:ALA:O	2.21	0.41

*Continued on next page...*

*Continued from previous page...*

Atom-1	Atom-2	Interatomic distance (Å)	Clash overlap (Å)
1:C:123:ILE:HG21	1:C:199:TYR:CE1	2.55	0.41
1:C:570:GLU:O	1:C:571:SER:O	2.38	0.41
1:C:579:GLN:O	1:C:583:GLU:HG3	2.21	0.41
1:A:284:ILE:O	1:A:288:GLU:HG2	2.21	0.41
1:A:564:ILE:HD13	1:A:624:TYR:HA	2.02	0.41
1:B:576:ARG:NH1	1:B:576:ARG:CG	2.82	0.41
1:C:28:ASP:C	1:C:30:GLY:N	2.75	0.41
1:A:26:GLN:OE1	1:A:332:ARG:HG3	2.21	0.40
1:A:272:LEU:HA	1:A:272:LEU:HD23	1.86	0.40
1:A:585:GLN:HB3	4:A:2102:HOH:O	2.21	0.40
1:B:92:ILE:O	1:B:95:TYR:HB3	2.21	0.40
1:C:169:TRP:CD1	1:C:170:ALA:N	2.89	0.40
1:C:297:LEU:HB3	1:C:299:TYR:CE1	2.56	0.40
1:C:534:GLY:HA3	1:C:550:ALA:O	2.21	0.40
1:B:37:LEU:O	1:B:607:LEU:HA	2.21	0.40
1:B:407:ILE:HG21	1:B:452:VAL:HG13	2.03	0.40
1:B:498:GLY:HA2	1:B:562:ALA:HB2	2.02	0.40
1:B:574:ALA:O	1:B:578:VAL:HG23	2.22	0.40
1:B:72:GLN:HB2	1:B:78:TRP:CZ2	2.56	0.40
1:C:141:PRO:HG2	1:C:144:LYS:HG3	2.02	0.40
1:C:137:VAL:HA	1:C:187:PHE:O	2.22	0.40
1:C:81:TYR:CE2	1:C:537:CYS:HB2	2.56	0.40
1:A:15:LEU:HD21	1:A:324:ALA:HB1	2.04	0.40
1:B:34:GLY:HA2	1:B:35:PRO:HD3	1.97	0.40
1:B:366:GLN:CD	1:B:366:GLN:N	2.72	0.40
1:C:179:ILE:O	1:C:182:SER:HB3	2.22	0.40
1:C:366:GLN:OE1	1:C:366:GLN:N	2.43	0.40
1:C:432:ILE:HA	1:C:433:PRO:HD3	1.90	0.40
1:C:498:GLY:HA2	1:C:562:ALA:HB2	2.04	0.40
1:A:106:ASP:O	1:A:107:GLU:C	2.59	0.40
1:A:217:ILE:O	1:A:220:ALA:HB3	2.22	0.40
1:A:240:ALA:O	1:A:243:ARG:HB2	2.22	0.40
1:A:365:PHE:HB3	1:A:366:GLN:OE1	2.22	0.40
1:A:485:TRP:CG	1:A:500:VAL:HG21	2.56	0.40
1:B:453:LEU:HD12	1:B:453:LEU:HA	1.80	0.40
1:C:114:LEU:HD22	1:C:118:GLN:HG3	2.03	0.40
1:C:15:LEU:HD11	1:C:622:GLY:HA2	2.04	0.40
1:C:127:ARG:N	1:C:208:ARG:HH12	2.20	0.40
1:C:468:ILE:HG22	1:C:469:ARG:N	2.36	0.40

There are no symmetry-related clashes.

## 5.3 Torsion angles

### 5.3.1 Protein backbone

In the following table, the Percentiles column shows the percent Ramachandran outliers of the chain as a percentile score with respect to all X-ray entries followed by that with respect to entries of similar resolution.

The Analysed column shows the number of residues for which the backbone conformation was analysed, and the total number of residues.

Mol	Chain	Analysed	Favoured	Allowed	Outliers	Percentiles	
1	A	618/631 (98%)	555 (90%)	49 (8%)	14 (2%)	7	25
1	B	618/631 (98%)	566 (92%)	44 (7%)	8 (1%)	14	41
1	C	618/631 (98%)	555 (90%)	52 (8%)	11 (2%)	10	32
All	All	1854/1893 (98%)	1676 (90%)	145 (8%)	33 (2%)	10	32

All (33) Ramachandran outliers are listed below:

Mol	Chain	Res	Type
1	A	200	GLU
1	A	571	SER
1	A	628	ILE
1	B	200	GLU
1	B	571	SER
1	B	628	ILE
1	C	200	GLU
1	C	571	SER
1	C	628	ILE
1	A	107	GLU
1	A	509	ILE
1	B	107	GLU
1	C	107	GLU
1	C	216	TRP
1	A	328	ALA
1	C	263	PRO
1	A	530	ASP
1	B	328	ALA
1	A	263	PRO
1	B	263	PRO
1	C	328	ALA
1	A	325	GLY
1	A	361	GLY
1	A	492	ASN

*Continued on next page...*

*Continued from previous page...*

Mol	Chain	Res	Type
1	B	361	GLY
1	C	414	ASN
1	C	514	PRO
1	C	509	ILE
1	A	500	VAL
1	B	514	PRO
1	C	361	GLY
1	A	514	PRO
1	A	523	VAL

### 5.3.2 Protein sidechains ⓘ

In the following table, the Percentiles column shows the percent sidechain outliers of the chain as a percentile score with respect to all X-ray entries followed by that with respect to entries of similar resolution.

The Analysed column shows the number of residues for which the sidechain conformation was analysed, and the total number of residues.

Mol	Chain	Analysed	Rotameric	Outliers	Percentiles	
1	A	503/513 (98%)	483 (96%)	20 (4%)	36	70
1	B	503/513 (98%)	484 (96%)	19 (4%)	38	72
1	C	503/513 (98%)	487 (97%)	16 (3%)	44	78
All	All	1509/1539 (98%)	1454 (96%)	55 (4%)	40	74

All (55) residues with a non-rotameric sidechain are listed below:

Mol	Chain	Res	Type
1	A	15	LEU
1	A	16	ASP
1	A	58	ARG
1	A	69	LEU
1	A	73	ARG
1	A	114	LEU
1	A	201	THR
1	A	202	ASP
1	A	217	ILE
1	A	219	ASP
1	A	221	LEU
1	A	332	ARG
1	A	366	GLN

*Continued on next page...*



*Continued from previous page...*

Mol	Chain	Res	Type
1	A	376	ASP
1	A	404	PHE
1	A	440	VAL
1	A	453	LEU
1	A	485	TRP
1	A	542	ASP
1	A	560	LEU
1	B	15	LEU
1	B	16	ASP
1	B	22	LEU
1	B	69	LEU
1	B	114	LEU
1	B	201	THR
1	B	202	ASP
1	B	217	ILE
1	B	276	ASP
1	B	279	GLN
1	B	366	GLN
1	B	397	ARG
1	B	440	VAL
1	B	453	LEU
1	B	468	ILE
1	B	485	TRP
1	B	542	ASP
1	B	560	LEU
1	B	586	ARG
1	C	15	LEU
1	C	16	ASP
1	C	69	LEU
1	C	114	LEU
1	C	201	THR
1	C	202	ASP
1	C	217	ILE
1	C	276	ASP
1	C	279	GLN
1	C	366	GLN
1	C	376	ASP
1	C	440	VAL
1	C	453	LEU
1	C	485	TRP
1	C	542	ASP
1	C	560	LEU

Some sidechains can be flipped to improve hydrogen bonding and reduce clashes. All (10) such sidechains are listed below:

Mol	Chain	Res	Type
1	A	70	HIS
1	A	357	ASN
1	B	70	HIS
1	B	226	HIS
1	B	279	GLN
1	B	357	ASN
1	B	414	ASN
1	C	226	HIS
1	C	279	GLN
1	C	357	ASN

### 5.3.3 RNA ⓘ

There are no RNA molecules in this entry.

## 5.4 Non-standard residues in protein, DNA, RNA chains ⓘ

There are no non-standard protein/DNA/RNA residues in this entry.

## 5.5 Carbohydrates ⓘ

There are no carbohydrates in this entry.

## 5.6 Ligand geometry ⓘ

6 ligands are modelled in this entry.

In the following table, the Counts columns list the number of bonds (or angles) for which Mogul statistics could be retrieved, the number of bonds (or angles) that are observed in the model and the number of bonds (or angles) that are defined in the chemical component dictionary. The Link column lists molecule types, if any, to which the group is linked. The Z score for a bond length (or angle) is the number of standard deviations the observed value is removed from the expected value. A bond length (or angle) with  $|Z| > 2$  is considered an outlier worth inspection. RMSZ is the root-mean-square of all Z scores of the bond lengths (or angles).

Mol	Type	Chain	Res	Link	Bond lengths			Bond angles		
					Counts	RMSZ	$\# Z  > 2$	Counts	RMSZ	$\# Z  > 2$
2	C8E	A	700	-	20,20,20	0.78	0	19,19,19	1.75	5 (26%)
3	W37	A	800	-	31,31,31	2.06	6 (19%)	40,40,40	1.62	4 (10%)

Mol	Type	Chain	Res	Link	Bond lengths			Bond angles		
					Counts	RMSZ	# Z  > 2	Counts	RMSZ	# Z  > 2
2	C8E	B	700	-	20,20,20	0.71	0	19,19,19	1.79	6 (31%)
3	W37	B	800	-	31,31,31	1.65	7 (22%)	40,40,40	1.73	4 (10%)
2	C8E	C	700	-	20,20,20	0.74	0	19,19,19	1.76	6 (31%)
3	W37	C	800	-	31,31,31	1.85	5 (16%)	40,40,40	1.51	4 (10%)

In the following table, the Chirals column lists the number of chiral outliers, the number of chiral centers analysed, the number of these observed in the model and the number defined in the chemical component dictionary. Similar counts are reported in the Torsion and Rings columns. '-' means no outliers of that kind were identified.

Mol	Type	Chain	Res	Link	Chirals	Torsions	Rings
2	C8E	A	700	-	-	0/18/18/18	0/0/0/0
3	W37	A	800	-	-	0/17/17/17	0/3/3/3
2	C8E	B	700	-	-	0/18/18/18	0/0/0/0
3	W37	B	800	-	-	0/17/17/17	0/3/3/3
2	C8E	C	700	-	-	0/18/18/18	0/0/0/0
3	W37	C	800	-	-	0/17/17/17	0/3/3/3

All (18) bond length outliers are listed below:

Mol	Chain	Res	Type	Atoms	Z	Observed(Å)	Ideal(Å)
3	A	800	W37	BR29-C4D	-2.37	1.85	1.90
3	C	800	W37	C3D-C4D	2.04	1.42	1.38
3	A	800	W37	C6D-C5D	2.10	1.42	1.38
3	B	800	W37	C3D-C2D	2.33	1.42	1.38
3	B	800	W37	C5C-C6C	2.34	1.41	1.37
3	B	800	W37	C5D-C4D	2.42	1.43	1.38
3	C	800	W37	C8C-C7C	2.58	1.42	1.36
3	A	800	W37	C8C-C7C	2.64	1.42	1.36
3	B	800	W37	C3D-C4D	2.68	1.43	1.38
3	B	800	W37	C8C-C7C	2.73	1.42	1.36
3	B	800	W37	C4C-C3C	3.01	1.40	1.36
3	A	800	W37	C5C-C6C	3.15	1.42	1.37
3	C	800	W37	C5C-C6C	3.84	1.44	1.37
3	A	800	W37	C4C-C3C	4.17	1.42	1.36
3	B	800	W37	C1C-N2C	4.37	1.36	1.32
3	C	800	W37	C4C-C3C	4.52	1.42	1.36
3	C	800	W37	C1C-N2C	6.15	1.38	1.32
3	A	800	W37	C1C-N2C	7.78	1.39	1.32

All (29) bond angle outliers are listed below:

Mol	Chain	Res	Type	Atoms	Z	Observed(°)	Ideal(°)
3	B	800	W37	C8P-C1C-N2C	-5.45	119.39	122.98
3	C	800	W37	C8P-C1C-N2C	-4.47	120.04	122.98
3	A	800	W37	C8P-C1C-N2C	-4.33	120.13	122.98
3	A	800	W37	C4C-C3C-N2C	-3.92	119.74	123.80
3	C	800	W37	C4C-C3C-N2C	-3.48	120.19	123.80
3	B	800	W37	C4C-C3C-N2C	-3.29	120.39	123.80
2	B	700	C8E	C19-O18-C17	-2.95	100.52	113.30
2	C	700	C8E	C19-O18-C17	-2.86	100.92	113.30
2	A	700	C8E	C19-O18-C17	-2.69	101.64	113.30
2	B	700	C8E	C16-O15-C14	-2.62	101.96	113.30
2	C	700	C8E	C16-O15-C14	-2.44	102.75	113.30
2	C	700	C8E	C7-C6-C5	-2.28	102.73	114.45
2	A	700	C8E	C16-O15-C14	-2.21	103.74	113.30
2	B	700	C8E	C7-C6-C5	-2.10	103.65	114.45
2	C	700	C8E	O18-C19-C20	2.45	121.44	110.15
2	A	700	C8E	O18-C19-C20	2.45	121.45	110.15
3	C	800	W37	C1D-C1C-C8P	2.49	125.17	122.14
2	B	700	C8E	O18-C19-C20	2.56	121.97	110.15
2	C	700	C8E	O15-C16-C17	2.77	123.14	110.41
2	B	700	C8E	O15-C16-C17	2.81	123.30	110.41
3	A	800	W37	C1D-C1C-C8P	2.82	125.57	122.14
2	A	700	C8E	O15-C16-C17	2.93	123.85	110.41
3	B	800	W37	C1D-C1C-C8P	3.67	126.59	122.14
2	C	700	C8E	O15-C14-C13	4.39	130.57	110.41
2	B	700	C8E	O15-C14-C13	4.42	130.68	110.41
2	A	700	C8E	O15-C14-C13	4.57	131.41	110.41
3	C	800	W37	C3C-N2C-C1C	6.12	122.70	118.00
3	A	800	W37	C3C-N2C-C1C	6.44	122.95	118.00
3	B	800	W37	C3C-N2C-C1C	6.87	123.28	118.00

There are no chirality outliers.

There are no torsion outliers.

There are no ring outliers.

2 monomers are involved in 5 short contacts:

Mol	Chain	Res	Type	Clashes	Symm-Clashes
2	B	700	C8E	3	0
2	C	700	C8E	2	0

## 5.7 Other polymers ⓘ

There are no such residues in this entry.

## 5.8 Polymer linkage issues ⓘ

There are no chain breaks in this entry.

## 6 Fit of model and data [i](#)

### 6.1 Protein, DNA and RNA chains [i](#)

In the following table, the column labelled ‘#RSRZ > 2’ contains the number (and percentage) of RSRZ outliers, followed by percent RSRZ outliers for the chain as percentile scores relative to all X-ray entries and entries of similar resolution. The OWAB column contains the minimum, median, 95<sup>th</sup> percentile and maximum values of the occupancy-weighted average B-factor per residue. The column labelled ‘Q < 0.9’ lists the number of (and percentage) of residues with an average occupancy less than 0.9.

Mol	Chain	Analysed	<RSRZ>	#RSRZ>2	OWAB(Å <sup>2</sup> )	Q<0.9
1	A	620/631 (98%)	-0.67	0 100 100	11, 52, 95, 100	0
1	B	620/631 (98%)	-0.88	0 100 100	13, 38, 80, 100	0
1	C	620/631 (98%)	-0.82	0 100 100	11, 43, 87, 100	0
All	All	1860/1893 (98%)	-0.79	0 100 100	11, 44, 89, 100	0

There are no RSRZ outliers to report.

### 6.2 Non-standard residues in protein, DNA, RNA chains [i](#)

There are no non-standard protein/DNA/RNA residues in this entry.

### 6.3 Carbohydrates [i](#)

There are no carbohydrates in this entry.

### 6.4 Ligands [i](#)

In the following table, the Atoms column lists the number of modelled atoms in the group and the number defined in the chemical component dictionary. LLDF column lists the quality of electron density of the group with respect to its neighbouring residues in protein, DNA or RNA chains. The B-factors column lists the minimum, median, 95<sup>th</sup> percentile and maximum values of B factors of atoms in the group. The column labelled ‘Q < 0.9’ lists the number of atoms with occupancy less than 0.9.

Mol	Type	Chain	Res	Atoms	RSCC	RSR	LLDF	B-factors(Å <sup>2</sup> )	Q<0.9
2	C8E	C	700	21/21	0.80	0.38	6.99	87,87,87,87	0
2	C8E	A	700	21/21	0.80	0.40	5.60	95,95,95,95	0
2	C8E	B	700	21/21	0.83	0.38	4.08	83,83,83,83	0

*Continued on next page...*

*Continued from previous page...*

Mol	Type	Chain	Res	Atoms	RSCC	RSR	LLDF	B-factors( $\text{\AA}^2$ )	Q<0.9
3	W37	C	800	29/29	0.99	0.18	0.96	26,28,45,45	0
3	W37	B	800	29/29	0.99	0.18	0.73	20,31,45,45	0
3	W37	A	800	29/29	0.98	0.18	0.38	26,30,59,59	0

## 6.5 Other polymers [i](#)

There are no such residues in this entry.