



wwPDB X-ray Structure Validation Summary Report ⓘ

Oct 15, 2017 – 11:52 AM EDT

PDB ID : 5OFU
Title : Crystal structure of Leishmania major fructose-1,6-bisphosphatase in T-state.
Authors : Yuan, M.; Vasquez-Valdivieso, M.G.; McNae, I.W.; Michels, P.A.M.;
Fothergill-Gilmore, L.A.; Walkinshaw, M.D.
Deposited on : unknown
Resolution : 2.62 Å(reported)

This is a wwPDB X-ray Structure Validation Summary Report for a publicly released PDB entry.

We welcome your comments at validation@mail.wwpdb.org

A user guide is available at

<http://wwpdb.org/validation/2016/XrayValidationReportHelp>

with specific help available everywhere you see the ⓘ symbol.

The following versions of software and data (see [references ⓘ](#)) were used in the production of this report:

MolProbity : 4.02b-467
Mogul : 1.7.2 (RC1), CSD as538be (2017)
Xtriage (Phenix) : 1.9-1692
EDS : rb-20030345
Percentile statistics : 20161228.v01 (using entries in the PDB archive December 28th 2016)
Refmac : 5.8.0135
CCP4 : 6.5.0
Ideal geometry (proteins) : Engh & Huber (2001)
Ideal geometry (DNA, RNA) : Parkinson et al. (1996)
Validation Pipeline (wwPDB-VP) : rb-20030345

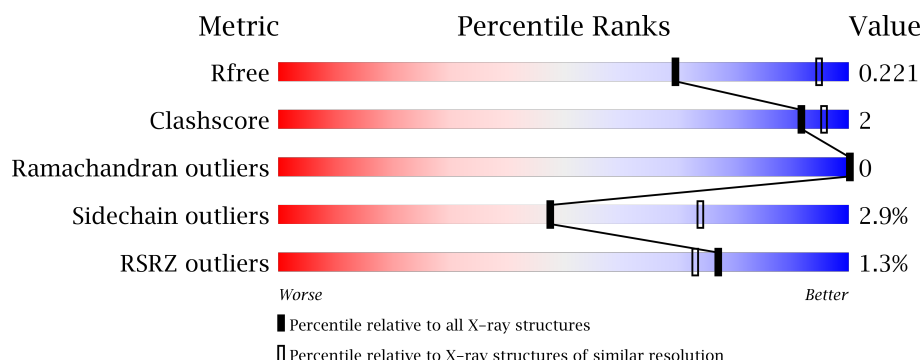
1 Overall quality at a glance

The following experimental techniques were used to determine the structure:

X-RAY DIFFRACTION

The reported resolution of this entry is 2.62 Å.

Percentile scores (ranging between 0-100) for global validation metrics of the entry are shown in the following graphic. The table shows the number of entries on which the scores are based.



Metric	Whole archive (#Entries)	Similar resolution (#Entries, resolution range(Å))
R_{free}	100719	2983 (2.64-2.60)
Clashscore	112137	3351 (2.64-2.60)
Ramachandran outliers	110173	3298 (2.64-2.60)
Sidechain outliers	110143	3298 (2.64-2.60)
RSRZ outliers	101464	2992 (2.64-2.60)

The table below summarises the geometric issues observed across the polymeric chains and their fit to the electron density. The red, orange, yellow and green segments on the lower bar indicate the fraction of residues that contain outliers for ≥ 3 , 2, 1 and 0 types of geometric quality criteria. A grey segment represents the fraction of residues that are not modelled. The numeric value for each fraction is indicated below the corresponding segment, with a dot representing fractions $\leq 5\%$. The upper red bar (where present) indicates the fraction of residues that have poor fit to the electron density. The numeric value is given above the bar.

Mol	Chain	Length	Quality of chain
1	A	351	<div> <div>0.1%</div> <div>85%</div> <div>6%</div> <div>8%</div> </div>
1	B	351	<div> <div>0.1%</div> <div>86%</div> <div>5%</div> <div>8%</div> </div>
1	C	351	<div> <div>0.1%</div> <div>83%</div> <div>7%</div> <div>10%</div> </div>
1	D	351	<div> <div>2%</div> <div>83%</div> <div>8%</div> <div>9%</div> </div>

2 Entry composition [i](#)

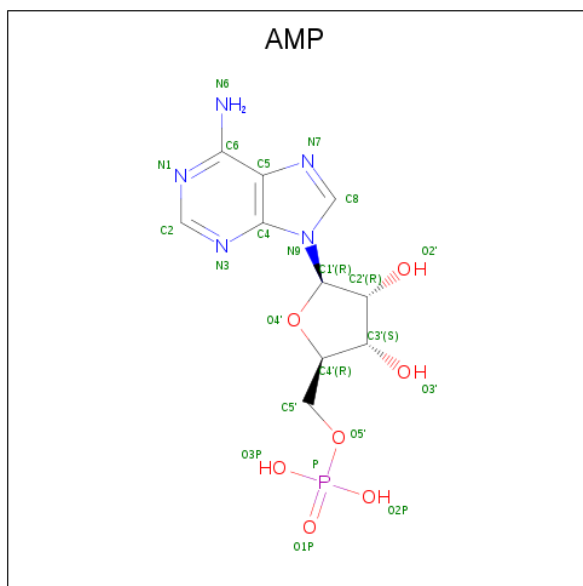
There are 5 unique types of molecules in this entry. The entry contains 10279 atoms, of which 0 are hydrogens and 0 are deuteriums.

In the tables below, the ZeroOcc column contains the number of atoms modelled with zero occupancy, the AltConf column contains the number of residues with at least one atom in alternate conformation and the Trace column contains the number of residues modelled with at most 2 atoms.

- Molecule 1 is a protein called FBP protein.

Mol	Chain	Residues	Atoms					ZeroOcc	AltConf	Trace
1	A	322	Total	C	N	O	S	0	0	0
			2510	1594	432	469	15			
1	B	322	Total	C	N	O	S	0	0	0
			2510	1594	432	469	15			
1	C	317	Total	C	N	O	S	0	0	0
			2481	1577	426	463	15			
1	D	321	Total	C	N	O	S	0	0	0
			2506	1592	431	468	15			

- Molecule 2 is ADENOSINE MONOPHOSPHATE (three-letter code: AMP) (formula: $C_{10}H_{14}N_5O_7P$).



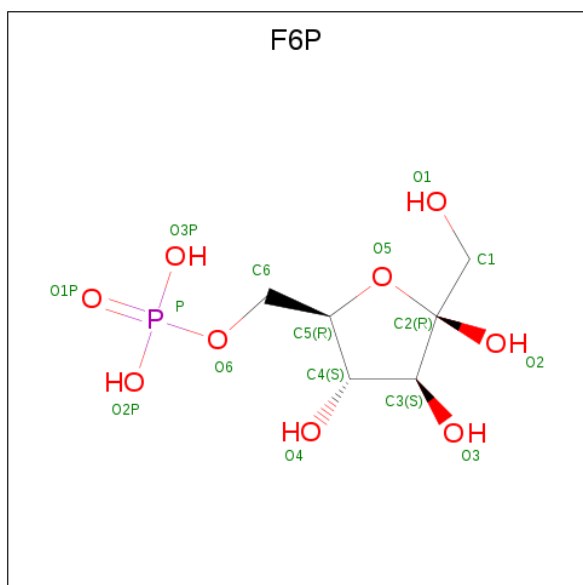
Mol	Chain	Residues	Atoms					ZeroOcc	AltConf
2	A	1	Total	C	N	O	P	0	0
			23	10	5	7	1		
2	B	1	Total	C	N	O	P	0	0
			23	10	5	7	1		

Continued on next page...

Continued from previous page...

Mol	Chain	Residues	Atoms					ZeroOcc	AltConf
2	C	1	Total	C	N	O	P	0	0
			23	10	5	7	1		
2	D	1	Total	C	N	O	P	0	0
			23	10	5	7	1		

- Molecule 3 is FRUCTOSE-6-PHOSPHATE (three-letter code: F6P) (formula: $C_6H_{13}O_9P$).



Mol	Chain	Residues	Atoms				ZeroOcc	AltConf
3	A	1	Total	C	O	P	0	0
			16	6	9	1		
3	B	1	Total	C	O	P	0	0
			16	6	9	1		
3	C	1	Total	C	O	P	0	0
			16	6	9	1		
3	D	1	Total	C	O	P	0	0
			16	6	9	1		

- Molecule 4 is CHLORIDE ION (three-letter code: CL) (formula: Cl).

Mol	Chain	Residues	Atoms		ZeroOcc	AltConf
4	A	1	Total	Cl	0	0
			1	1		
4	C	1	Total	Cl	0	0
			1	1		

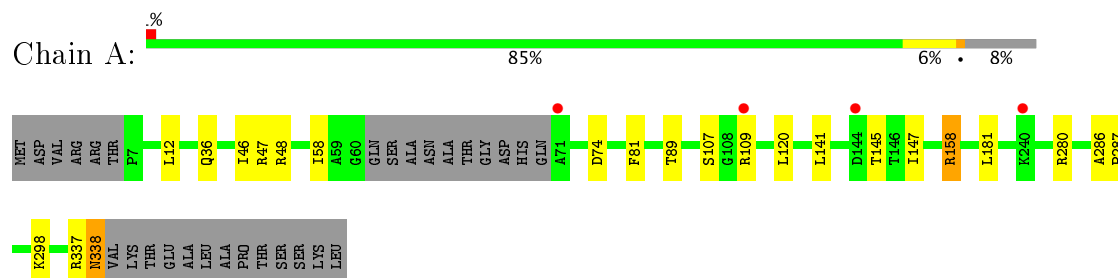
- Molecule 5 is water.

Mol	Chain	Residues	Atoms		ZeroOcc	AltConf
5	A	37	Total 37	O 37	0	0
5	B	32	Total 32	O 32	0	0
5	C	18	Total 18	O 18	0	0
5	D	27	Total 27	O 27	0	0

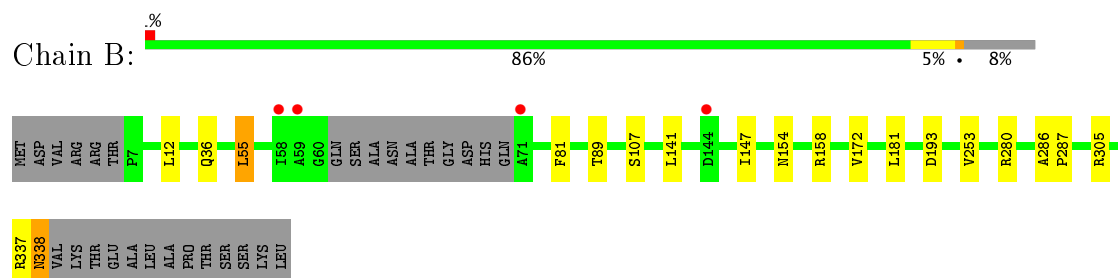
3 Residue-property plots [i](#)

These plots are drawn for all protein, RNA and DNA chains in the entry. The first graphic for a chain summarises the proportions of the various outlier classes displayed in the second graphic. The second graphic shows the sequence view annotated by issues in geometry and electron density. Residues are color-coded according to the number of geometric quality criteria for which they contain at least one outlier: green = 0, yellow = 1, orange = 2 and red = 3 or more. A red dot above a residue indicates a poor fit to the electron density ($RSRZ > 2$). Stretches of 2 or more consecutive residues without any outlier are shown as a green connector. Residues present in the sample, but not in the model, are shown in grey.

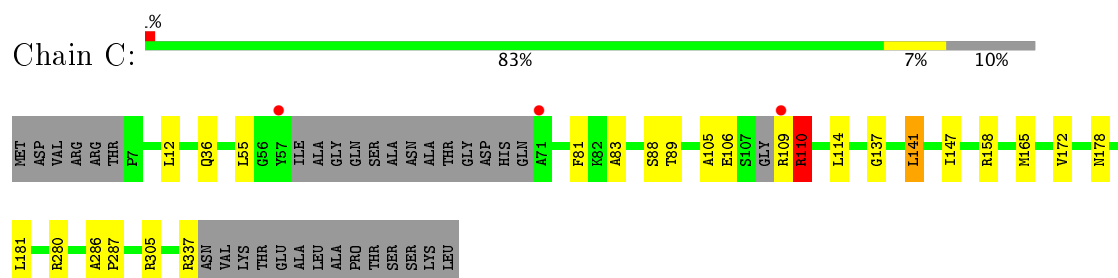
• Molecule 1: FBP protein



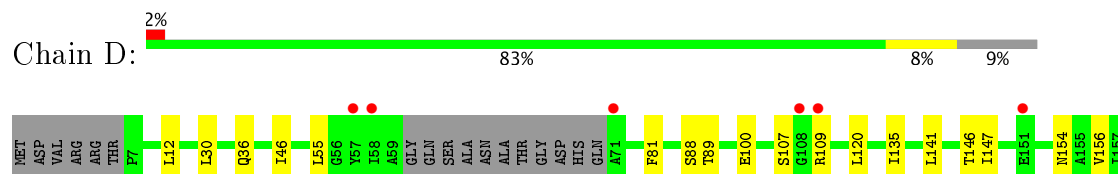
• Molecule 1: FBP protein



• Molecule 1: FBP protein



• Molecule 1: FBP protein



R158	Y170	L181	M252	H257	R280	A286	P287	M288	N338	VAL	LYS	THR	GLU	ALA	LEU	ALA	PRO	THR	SER	SER	LYS	LEU
------	------	------	------	------	------	------	------	------	------	-----	-----	-----	-----	-----	-----	-----	-----	-----	-----	-----	-----	-----

4 Data and refinement statistics

Property	Value	Source
Space group	P 21 21 21	Depositor
Cell constants a, b, c, α , β , γ	90.59Å 109.25Å 140.51Å 90.00° 90.00° 90.00°	Depositor
Resolution (Å)	70.25 – 2.62 70.25 – 2.62	Depositor EDS
% Data completeness (in resolution range)	99.8 (70.25-2.62) 99.8 (70.25-2.62)	Depositor EDS
R_{merge}	(Not available)	Depositor
R_{sym}	(Not available)	Depositor
$\langle I/\sigma(I) \rangle$ ¹	2.37 (at 2.62Å)	Xtriage
Refinement program	REFMAC 5.8.0135	Depositor
R, R_{free}	0.189 , 0.216 0.194 , 0.221	Depositor DCC
R_{free} test set	2147 reflections (5.32%)	DCC
Wilson B-factor (Å ²)	44.0	Xtriage
Anisotropy	0.841	Xtriage
Bulk solvent k_{sol} (e/Å ³), B_{sol} (Å ²)	0.30 , 28.1	EDS
L-test for twinning ²	$\langle L \rangle = 0.48$, $\langle L^2 \rangle = 0.31$	Xtriage
Estimated twinning fraction	No twinning to report.	Xtriage
F_o, F_c correlation	0.95	EDS
Total number of atoms	10279	wwPDB-VP
Average B, all atoms (Å ²)	56.0	wwPDB-VP

Xtriage's analysis on translational NCS is as follows: *The largest off-origin peak in the Patterson function is 18.34% of the height of the origin peak. No significant pseudotranslation is detected.*

¹Intensities estimated from amplitudes.

²Theoretical values of $\langle |L| \rangle$, $\langle L^2 \rangle$ for acentric reflections are 0.5, 0.333 respectively for untwinned datasets, and 0.375, 0.2 for perfectly twinned datasets.

5 Model quality [i](#)

5.1 Standard geometry [i](#)

Bond lengths and bond angles in the following residue types are not validated in this section: AMP, CL, F6P

The Z score for a bond length (or angle) is the number of standard deviations the observed value is removed from the expected value. A bond length (or angle) with $|Z| > 5$ is considered an outlier worth inspection. RMSZ is the root-mean-square of all Z scores of the bond lengths (or angles).

Mol	Chain	Bond lengths		Bond angles	
		RMSZ	$\# Z > 5$	RMSZ	$\# Z > 5$
1	A	0.43	0/2561	0.71	4/3461 (0.1%)
1	B	0.43	0/2561	0.70	3/3461 (0.1%)
1	C	0.45	0/2531	0.74	7/3419 (0.2%)
1	D	0.44	0/2557	0.73	3/3456 (0.1%)
All	All	0.44	0/10210	0.72	17/13797 (0.1%)

There are no bond length outliers.

The worst 5 of 17 bond angle outliers are listed below:

Mol	Chain	Res	Type	Atoms	Z	Observed(°)	Ideal(°)
1	D	280	ARG	NE-CZ-NH2	-7.10	116.75	120.30
1	B	337	ARG	NE-CZ-NH1	6.95	123.78	120.30
1	C	110	ARG	NE-CZ-NH1	6.93	123.76	120.30
1	A	47	ARG	NE-CZ-NH1	6.80	123.70	120.30
1	C	141	LEU	CB-CG-CD2	6.63	122.28	111.00

There are no chirality outliers.

There are no planarity outliers.

5.2 Too-close contacts [i](#)

In the following table, the Non-H and H(model) columns list the number of non-hydrogen atoms and hydrogen atoms in the chain respectively. The H(added) column lists the number of hydrogen atoms added and optimized by MolProbity. The Clashes column lists the number of clashes within the asymmetric unit, whereas Symm-Clashes lists symmetry related clashes.

Mol	Chain	Non-H	H(model)	H(added)	Clashes	Symm-Clashes
1	A	2510	0	2514	9	0
1	B	2510	0	2514	7	0

Continued on next page...

Continued from previous page...

Mol	Chain	Non-H	H(model)	H(added)	Clashes	Symm-Clashes
1	C	2481	0	2485	12	0
1	D	2506	0	2511	14	0
2	A	23	0	12	0	0
2	B	23	0	12	0	0
2	C	23	0	12	0	0
2	D	23	0	12	0	0
3	A	16	0	11	0	0
3	B	16	0	11	0	0
3	C	16	0	11	0	0
3	D	16	0	11	0	0
4	A	1	0	0	0	0
4	C	1	0	0	0	0
5	A	37	0	0	0	0
5	B	32	0	0	0	0
5	C	18	0	0	0	0
5	D	27	0	0	0	0
All	All	10279	0	10116	38	0

The all-atom clashscore is defined as the number of clashes found per 1000 atoms (including hydrogen atoms). The all-atom clashscore for this structure is 2.

The worst 5 of 38 close contacts within the same asymmetric unit are listed below, sorted by their clash magnitude.

Atom-1	Atom-2	Interatomic distance (Å)	Clash overlap (Å)
1:D:147:ILE:HD11	1:D:156:VAL:HG21	1.36	1.07
1:C:110:ARG:NH2	1:C:147:ILE:O	2.12	0.82
1:D:141:LEU:HD21	1:D:147:ILE:HD13	1.73	0.70
1:C:114:LEU:HD11	1:C:141:LEU:HD12	1.73	0.69
1:A:58:ILE:HD12	1:C:83:ALA:HB2	1.77	0.66

There are no symmetry-related clashes.

5.3 Torsion angles [i](#)

5.3.1 Protein backbone [i](#)

In the following table, the Percentiles column shows the percent Ramachandran outliers of the chain as a percentile score with respect to all X-ray entries followed by that with respect to entries of similar resolution.

The Analysed column shows the number of residues for which the backbone conformation was analysed, and the total number of residues.

Mol	Chain	Analysed	Favoured	Allowed	Outliers	Percentiles	
1	A	318/351 (91%)	309 (97%)	9 (3%)	0	100	100
1	B	318/351 (91%)	309 (97%)	9 (3%)	0	100	100
1	C	311/351 (89%)	303 (97%)	8 (3%)	0	100	100
1	D	317/351 (90%)	308 (97%)	9 (3%)	0	100	100
All	All	1264/1404 (90%)	1229 (97%)	35 (3%)	0	100	100

There are no Ramachandran outliers to report.

5.3.2 Protein sidechains ⓘ

In the following table, the Percentiles column shows the percent sidechain outliers of the chain as a percentile score with respect to all X-ray entries followed by that with respect to entries of similar resolution.

The Analysed column shows the number of residues for which the sidechain conformation was analysed, and the total number of residues.

Mol	Chain	Analysed	Rotameric	Outliers	Percentiles	
1	A	271/295 (92%)	261 (96%)	10 (4%)	39	65
1	B	271/295 (92%)	264 (97%)	7 (3%)	51	77
1	C	269/295 (91%)	262 (97%)	7 (3%)	51	77
1	D	271/295 (92%)	264 (97%)	7 (3%)	51	77
All	All	1082/1180 (92%)	1051 (97%)	31 (3%)	48	74

5 of 31 residues with a non-rotameric sidechain are listed below:

Mol	Chain	Res	Type
1	B	181	LEU
1	C	55	LEU
1	D	107	SER
1	B	280	ARG
1	C	81	PHE

Some sidechains can be flipped to improve hydrogen bonding and reduce clashes. 5 of 15 such sidechains are listed below:

Mol	Chain	Res	Type
1	B	338	ASN
1	C	45	ASN
1	D	195	ASN
1	B	195	ASN
1	D	20	GLN

5.3.3 RNA ⓘ

There are no RNA molecules in this entry.

5.4 Non-standard residues in protein, DNA, RNA chains ⓘ

There are no non-standard protein/DNA/RNA residues in this entry.

5.5 Carbohydrates ⓘ

There are no carbohydrates in this entry.

5.6 Ligand geometry ⓘ

Of 10 ligands modelled in this entry, 2 are monoatomic - leaving 8 for Mogul analysis.

In the following table, the Counts columns list the number of bonds (or angles) for which Mogul statistics could be retrieved, the number of bonds (or angles) that are observed in the model and the number of bonds (or angles) that are defined in the Chemical Component Dictionary. The Link column lists molecule types, if any, to which the group is linked. The Z score for a bond length (or angle) is the number of standard deviations the observed value is removed from the expected value. A bond length (or angle) with $|Z| > 2$ is considered an outlier worth inspection. RMSZ is the root-mean-square of all Z scores of the bond lengths (or angles).

Mol	Type	Chain	Res	Link	Bond lengths			Bond angles		
					Counts	RMSZ	$\# Z > 2$	Counts	RMSZ	$\# Z > 2$
2	AMP	A	401	-	22,25,25	1.04	1 (4%)	24,38,38	1.76	2 (8%)
3	F6P	A	402	-	15,16,16	0.63	0	17,25,25	1.05	2 (11%)
2	AMP	B	401	-	22,25,25	1.07	2 (9%)	24,38,38	1.77	2 (8%)
3	F6P	B	402	-	15,16,16	0.69	1 (6%)	17,25,25	1.03	1 (5%)
2	AMP	C	401	-	22,25,25	1.06	2 (9%)	24,38,38	1.83	3 (12%)
3	F6P	C	402	-	15,16,16	0.60	0	17,25,25	1.03	0
2	AMP	D	401	-	22,25,25	1.14	2 (9%)	24,38,38	1.77	1 (4%)
3	F6P	D	402	-	15,16,16	0.62	0	17,25,25	1.11	2 (11%)

In the following table, the Chirals column lists the number of chiral outliers, the number of chiral centers analysed, the number of these observed in the model and the number defined in the Chemical Component Dictionary. Similar counts are reported in the Torsion and Rings columns. '-' means no outliers of that kind were identified.

Mol	Type	Chain	Res	Link	Chirals	Torsions	Rings
2	AMP	A	401	-	-	0/6/26/26	0/3/3/3
3	F6P	A	402	-	-	0/9/28/28	0/1/1/1
2	AMP	B	401	-	-	0/6/26/26	0/3/3/3
3	F6P	B	402	-	-	0/9/28/28	0/1/1/1
2	AMP	C	401	-	-	0/6/26/26	0/3/3/3
3	F6P	C	402	-	-	0/9/28/28	0/1/1/1
2	AMP	D	401	-	-	0/6/26/26	0/3/3/3
3	F6P	D	402	-	-	0/9/28/28	0/1/1/1

The worst 5 of 8 bond length outliers are listed below:

Mol	Chain	Res	Type	Atoms	Z	Observed(Å)	Ideal(Å)
3	B	402	F6P	O2-C2	2.01	1.44	1.40
2	C	401	AMP	C2-N3	2.05	1.35	1.32
2	B	401	AMP	O4'-C1'	2.12	1.44	1.41
2	D	401	AMP	C2-N3	2.23	1.35	1.32
2	A	401	AMP	C5-C4	2.92	1.47	1.40

The worst 5 of 13 bond angle outliers are listed below:

Mol	Chain	Res	Type	Atoms	Z	Observed(°)	Ideal(°)
2	B	401	AMP	N3-C2-N1	-7.27	122.52	128.86
2	D	401	AMP	N3-C2-N1	-7.26	122.53	128.86
2	C	401	AMP	N3-C2-N1	-7.18	122.60	128.86
2	A	401	AMP	N3-C2-N1	-6.97	122.79	128.86
2	C	401	AMP	C4-C5-N7	-2.26	107.22	109.41

There are no chirality outliers.

There are no torsion outliers.

There are no ring outliers.

No monomer is involved in short contacts.

5.7 Other polymers

There are no such residues in this entry.

5.8 Polymer linkage issues ⓘ

There are no chain breaks in this entry.

6 Fit of model and data [i](#)

6.1 Protein, DNA and RNA chains [i](#)

In the following table, the column labelled ‘#RSRZ> 2’ contains the number (and percentage) of RSRZ outliers, followed by percent RSRZ outliers for the chain as percentile scores relative to all X-ray entries and entries of similar resolution. The OWAB column contains the minimum, median, 95th percentile and maximum values of the occupancy-weighted average B-factor per residue. The column labelled ‘Q< 0.9’ lists the number of (and percentage) of residues with an average occupancy less than 0.9.

Mol	Chain	Analysed	<RSRZ>	#RSRZ>2	OWAB(Å ²)	Q<0.9
1	A	322/351 (91%)	-0.31	4 (1%) 79 75	34, 47, 87, 104	0
1	B	322/351 (91%)	-0.32	4 (1%) 79 75	33, 50, 90, 135	0
1	C	317/351 (90%)	-0.30	3 (0%) 84 81	34, 53, 90, 120	0
1	D	321/351 (91%)	-0.20	6 (1%) 67 62	37, 56, 93, 121	0
All	All	1282/1404 (91%)	-0.28	17 (1%) 77 73	33, 52, 90, 135	0

The worst 5 of 17 RSRZ outliers are listed below:

Mol	Chain	Res	Type	RSRZ
1	D	58	ILE	5.8
1	C	71	ALA	5.1
1	B	144	ASP	4.3
1	C	109	ARG	3.7
1	A	109	ARG	3.5

6.2 Non-standard residues in protein, DNA, RNA chains [i](#)

There are no non-standard protein/DNA/RNA residues in this entry.

6.3 Carbohydrates [i](#)

There are no carbohydrates in this entry.

6.4 Ligands [i](#)

In the following table, the Atoms column lists the number of modelled atoms in the group and the number defined in the chemical component dictionary. LLDF column lists the quality of electron density of the group with respect to its neighbouring residues in protein, DNA or RNA chains. The B-factors column lists the minimum, median, 95th percentile and maximum values of B factors

of atoms in the group. The column labelled 'Q< 0.9' lists the number of atoms with occupancy less than 0.9.

Mol	Type	Chain	Res	Atoms	RSCC	RSR	LLDF	B-factors(\AA^2)	Q<0.9
2	AMP	D	401	23/23	0.95	0.16	0.77	46,50,59,68	0
3	F6P	B	402	16/16	0.96	0.16	0.59	37,49,62,68	0
3	F6P	D	402	16/16	0.96	0.15	0.12	41,60,65,66	0
2	AMP	C	401	23/23	0.97	0.14	-0.01	32,39,57,60	0
3	F6P	C	402	16/16	0.94	0.14	-0.25	44,59,67,70	0
2	AMP	A	401	23/23	0.97	0.13	-0.59	30,37,48,49	0
2	AMP	B	401	23/23	0.97	0.14	-0.69	41,51,55,57	0
3	F6P	A	402	16/16	0.98	0.13	-0.71	29,48,58,67	0
4	CL	A	403	1/1	0.97	0.09	-5.28	31,31,31,31	0
4	CL	C	403	1/1	0.98	0.08	-9.98	39,39,39,39	0

6.5 Other polymers [i](#)

There are no such residues in this entry.