



wwPDB X-ray Structure Validation Summary Report ⓘ

Feb 15, 2017 – 02:07 am GMT

PDB ID : 1OJL
Title : CRYSTAL STRUCTURE OF A SIGMA54-ACTIVATOR SUGGESTS THE MECHANISM FOR THE CONFORMATIONAL SWITCH NECESSARY FOR SIGMA54 BINDING
Authors : Sallai, L.; Tucker, P.A.
Deposited on : 2003-07-10
Resolution : 3.00 Å(reported)

This is a wwPDB X-ray Structure Validation Summary Report for a publicly released PDB entry.

We welcome your comments at validation@mail.wwpdb.org

A user guide is available at

<http://wwpdb.org/validation/2016/XrayValidationReportHelp>

with specific help available everywhere you see the ⓘ symbol.

The following versions of software and data (see [references ⓘ](#)) were used in the production of this report:

MolProbity	:	4.02b-467
Mogul	:	1.7.2 (RC1), CSD as538be (2017)
Xtriage (Phenix)	:	1.9-1692
EDS	:	trunk28620
Percentile statistics	:	20161228.v01 (using entries in the PDB archive December 28th 2016)
Refmac	:	5.8.0135
CCP4	:	6.5.0
Ideal geometry (proteins)	:	Engh & Huber (2001)
Ideal geometry (DNA, RNA)	:	Parkinson et al. (1996)
Validation Pipeline (wwPDB-VP)	:	recalc28949

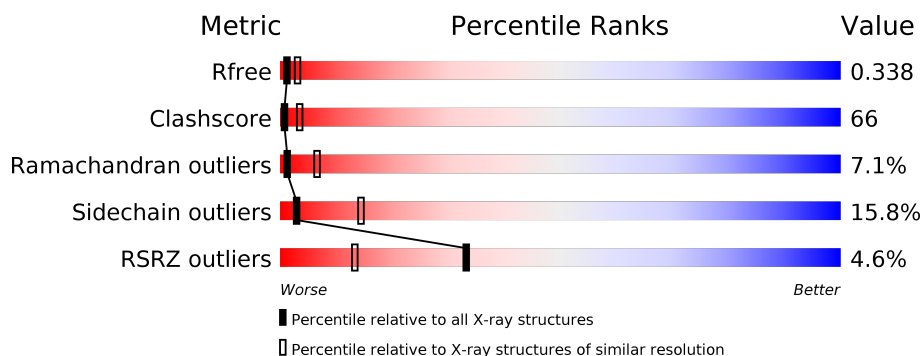
1 Overall quality at a glance

The following experimental techniques were used to determine the structure:

X-RAY DIFFRACTION

The reported resolution of this entry is 3.00 Å.

Percentile scores (ranging between 0-100) for global validation metrics of the entry are shown in the following graphic. The table shows the number of entries on which the scores are based.



Metric	Whole archive (#Entries)	Similar resolution (#Entries, resolution range(Å))
R_{free}	100719	1692 (3.00-3.00)
Clashscore	112137	2037 (3.00-3.00)
Ramachandran outliers	110173	1973 (3.00-3.00)
Sidechain outliers	110143	1976 (3.00-3.00)
RSRZ outliers	101464	1716 (3.00-3.00)

The table below summarises the geometric issues observed across the polymeric chains and their fit to the electron density. The red, orange, yellow and green segments on the lower bar indicate the fraction of residues that contain outliers for ≥ 3 , 2, 1 and 0 types of geometric quality criteria. A grey segment represents the fraction of residues that are not modelled. The numeric value for each fraction is indicated below the corresponding segment, with a dot representing fractions $\leq 5\%$. The upper red bar (where present) indicates the fraction of residues that have poor fit to the electron density. The numeric value is given above the bar.

Mol	Chain	Length	Quality of chain
1	A	304	
1	B	304	
1	C	304	
1	D	304	
1	E	304	
1	F	304	

The following table lists non-polymeric compounds, carbohydrate monomers and non-standard residues in protein, DNA, RNA chains that are outliers for geometric or electron-density-fit criteria:

Mol	Type	Chain	Res	Chirality	Geometry	Clashes	Electron density
2	PO4	A	1442	-	-	-	X
2	PO4	B	1390	-	-	-	X
2	PO4	C	1391	-	-	X	X
2	PO4	D	1442	-	-	X	X
2	PO4	F	1390	-	-	X	X
3	ATP	E	1442	-	-	X	X

2 Entry composition [i](#)

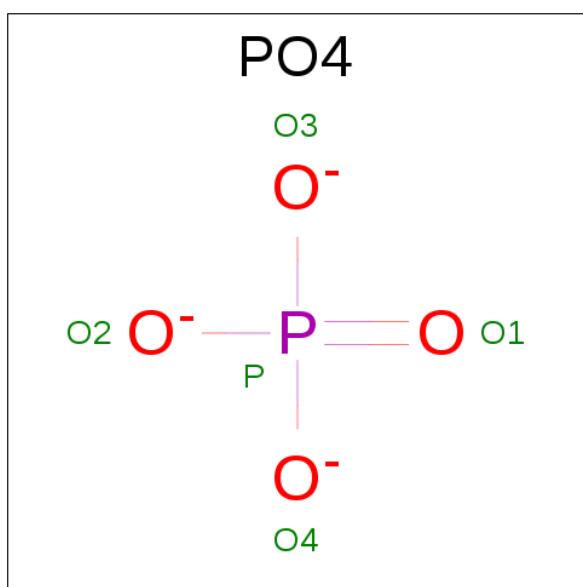
There are 4 unique types of molecules in this entry. The entry contains 12594 atoms, of which 0 are hydrogens and 0 are deuteriums.

In the tables below, the ZeroOcc column contains the number of atoms modelled with zero occupancy, the AltConf column contains the number of residues with at least one atom in alternate conformation and the Trace column contains the number of residues modelled with at most 2 atoms.

- Molecule 1 is a protein called TRANSCRIPTIONAL REGULATORY PROTEIN ZRAR.

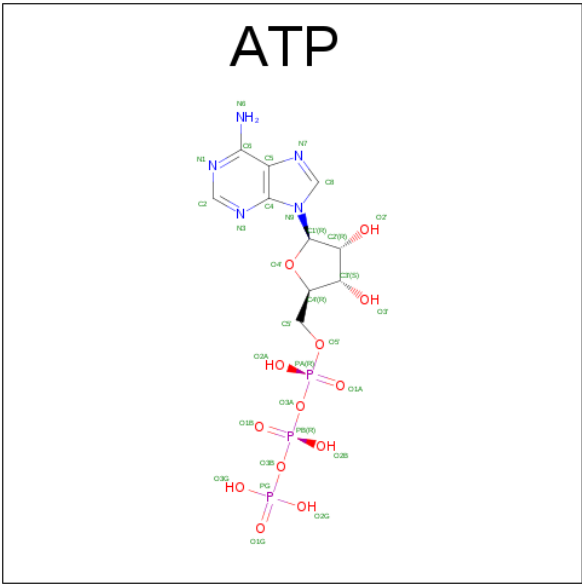
Mol	Chain	Residues	Atoms					ZeroOcc	AltConf	Trace
1	A	292	Total	C	N	O	S	0	0	0
			2234	1396	407	423	8			
1	B	251	Total	C	N	O	S	0	0	0
			1929	1201	357	363	8			
1	C	252	Total	C	N	O	S	0	0	0
			1925	1199	355	363	8			
1	D	297	Total	C	N	O	S	0	0	0
			2270	1416	418	428	8			
1	E	285	Total	C	N	O	S	0	0	0
			2183	1363	400	412	8			
1	F	247	Total	C	N	O	S	0	0	0
			1895	1183	347	357	8			

- Molecule 2 is PHOSPHATE ION (three-letter code: PO4) (formula: O₄P).



Mol	Chain	Residues	Atoms			ZeroOcc	AltConf
2	A	1	Total	O	P	0	0
			5	4	1		
2	B	1	Total	O	P	0	0
			5	4	1		
2	C	1	Total	O	P	0	0
			5	4	1		
2	D	1	Total	O	P	0	0
			5	4	1		
2	F	1	Total	O	P	0	0
			5	4	1		

- Molecule 3 is ADENOSINE-5'-TRIPHOSPHATE (three-letter code: ATP) (formula: C₁₀H₁₆N₅O₁₃P₃).



Mol	Chain	Residues	Atoms					ZeroOcc	AltConf
3	E	1	Total	C	N	O	P	0	0
			31	10	5	13	3		

- Molecule 4 is water.

Mol	Chain	Residues	Atoms		ZeroOcc	AltConf
4	A	16	Total	O	0	0
			16	16		
4	B	20	Total	O	0	0
			20	20		
4	C	16	Total	O	0	0
			16	16		

Continued on next page...

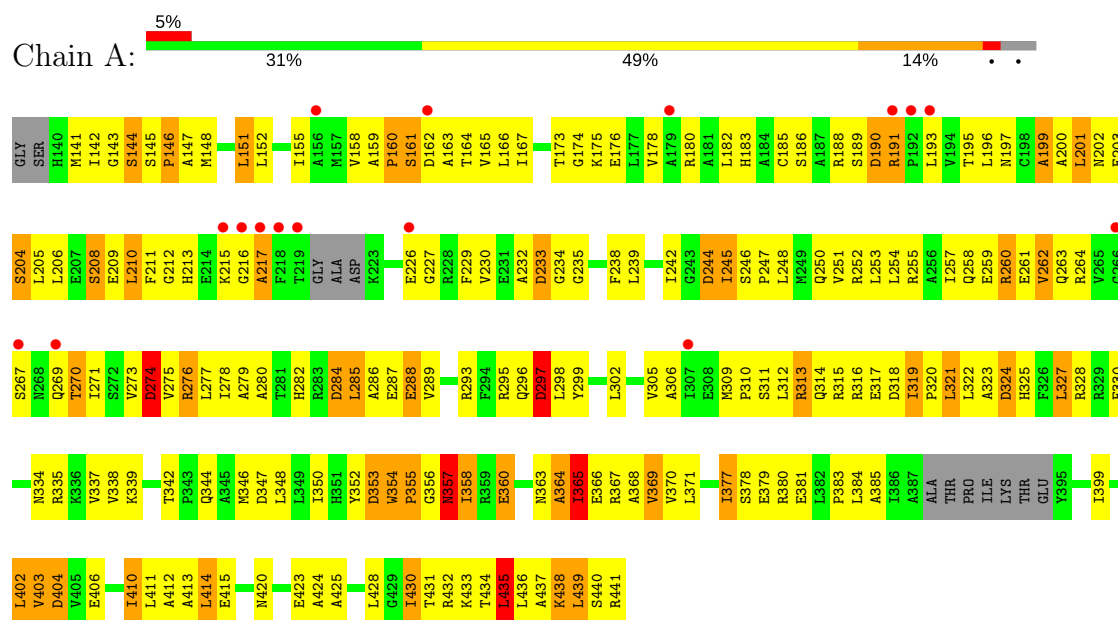
Continued from previous page...

Mol	Chain	Residues	Atoms		ZeroOcc	AltConf
4	D	23	Total 23	O 23	0	0
4	E	17	Total 17	O 17	0	0
4	F	10	Total 10	O 10	0	0

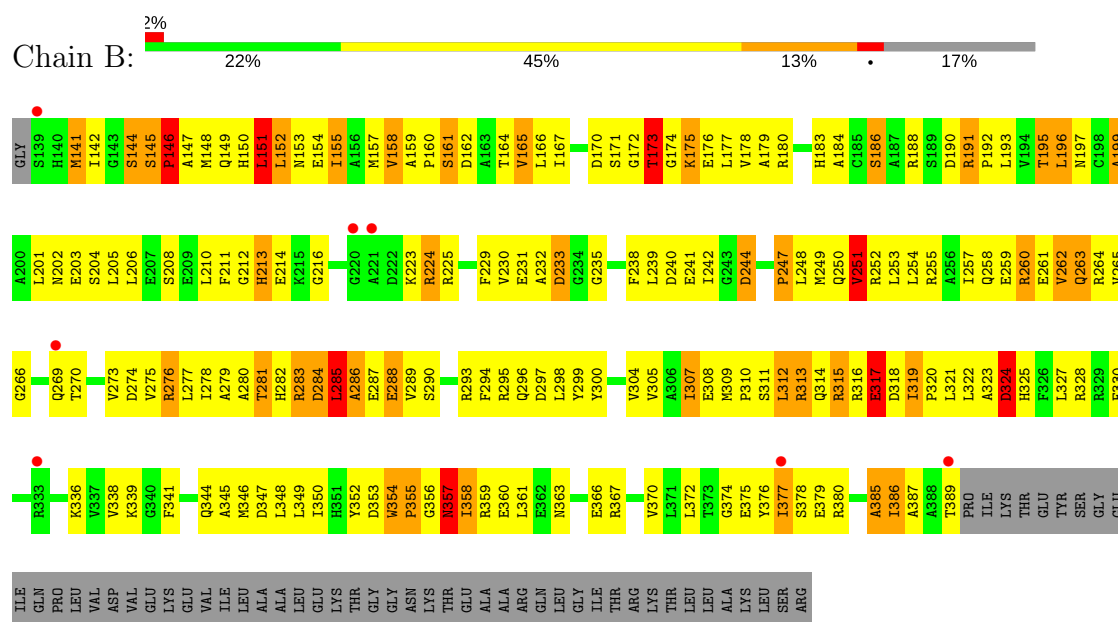
3 Residue-property plots

These plots are drawn for all protein, RNA and DNA chains in the entry. The first graphic for a chain summarises the proportions of the various outlier classes displayed in the second graphic. The second graphic shows the sequence view annotated by issues in geometry and electron density. Residues are color-coded according to the number of geometric quality criteria for which they contain at least one outlier: green = 0, yellow = 1, orange = 2 and red = 3 or more. A red dot above a residue indicates a poor fit to the electron density ($RSRZ > 2$). Stretches of 2 or more consecutive residues without any outlier are shown as a green connector. Residues present in the sample, but not in the model, are shown in grey.

• Molecule 1: TRANSCRIPTIONAL REGULATORY PROTEIN ZRAR



• Molecule 1: TRANSCRIPTIONAL REGULATORY PROTEIN ZRAR



[illegible]

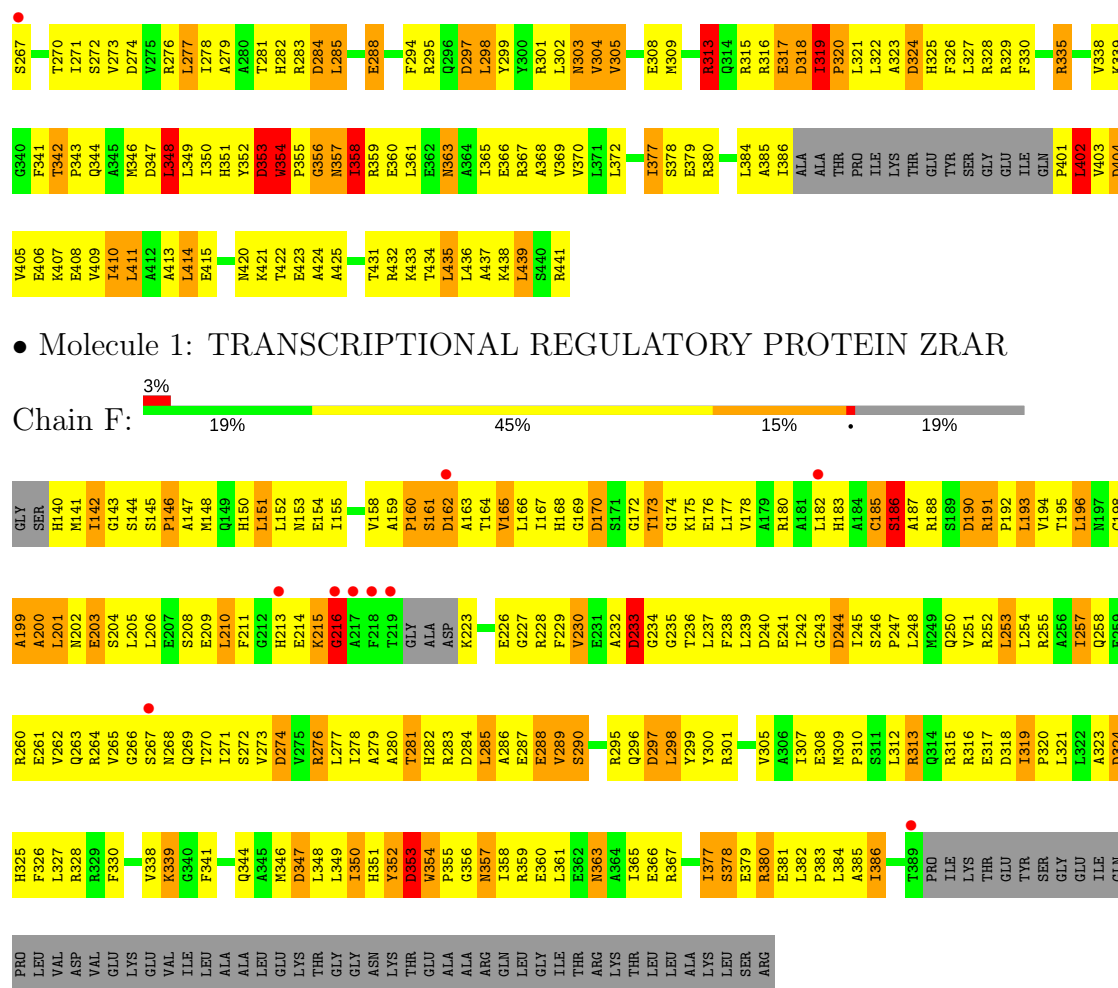
Chain D:

5% 32% 50% 14%

Chain E:

3% 26% 47% 17% 6%

Amino Acid	Count
GLY	1
SER	1
HI40	1
HI41	1
I142	1
G143	1
S144	1
S145	1
P146	1
A147	1
M148	1
Q149	1
H150	1
L151	1
L152	1
N153	1
E154	1
I155	1
V158	1
A159	1
P160	1
S161	1
D162	1
A163	1
T164	1
G169	1
D170	1
S171	1
G172	1
T173	1
G174	1
K175	1
E176	1
L177	1
V178	1
A179	1
R180	1
A181	1
L182	1
H183	1
A184	1
C185	1
S186	1
D190	1
R191	1
P192	1
L193	1
V194	1
T195	1
L196	1
N197	1
C198	1
A199	1
A200	1
L201	1
N202	1
F203	1
S204	1
L206	1
E207	1
S208	1
E209	1
L210	1
F211	1
G212	1
H213	1
E214	1
A217	1
F218	1
T219	1
GLY	1
ALA	1
ASP	1
K223	1
E226	1
G227	1
R228	1
F229	1
V230	1
E231	1
A232	1
D233	1
G234	1
G235	1
T236	1
L237	1
F238	1
L239	1
D240	1
E241	1
I242	1
G243	1
D244	1
I245	1
S246	1
P247	1
L248	1
F249	1
Q250	1
V251	1
R252	1
L253	1
L254	1
R255	1
A256	1
I257	1
Q258	1
E259	1
D260	1
E261	1
R264	1
V265	1
R266	1



4 Data and refinement statistics

Property	Value	Source
Space group	P 2 2 21	Depositor
Cell constants a, b, c, α , β , γ	107.44Å 114.74Å 187.26Å 90.00° 90.00° 90.00°	Depositor
Resolution (Å)	20.00 – 3.00 29.68 – 3.00	Depositor EDS
% Data completeness (in resolution range)	97.5 (20.00-3.00) 97.7 (29.68-3.00)	Depositor EDS
R_{merge}	0.06	Depositor
R_{sym}	(Not available)	Depositor
$\langle I/\sigma(I) \rangle$ ¹	2.52 (at 3.00Å)	Xtriage
Refinement program	REFMAC	Depositor
R, R_{free}	0.252 , 0.308 0.294 , 0.338	Depositor DCC
R_{free} test set	2288 reflections (4.98%)	DCC
Wilson B-factor (Å ²)	85.4	Xtriage
Anisotropy	0.671	Xtriage
Bulk solvent k_{sol} (e/Å ³), B_{sol} (Å ²)	0.24 , 52.5	EDS
L-test for twinning ²	$\langle L \rangle = 0.49$, $\langle L^2 \rangle = 0.32$	Xtriage
Estimated twinning fraction	No twinning to report.	Xtriage
F_o, F_c correlation	0.90	EDS
Total number of atoms	12594	wwPDB-VP
Average B, all atoms (Å ²)	59.0	wwPDB-VP

Xtriage's analysis on translational NCS is as follows: *The largest off-origin peak in the Patterson function is 3.57% of the height of the origin peak. No significant pseudotranslation is detected.*

¹Intensities estimated from amplitudes.

²Theoretical values of $\langle |L| \rangle$, $\langle L^2 \rangle$ for acentric reflections are 0.5, 0.333 respectively for untwinned datasets, and 0.375, 0.2 for perfectly twinned datasets.

5 Model quality [i](#)

5.1 Standard geometry [i](#)

Bond lengths and bond angles in the following residue types are not validated in this section: PO4, ATP

The Z score for a bond length (or angle) is the number of standard deviations the observed value is removed from the expected value. A bond length (or angle) with $|Z| > 5$ is considered an outlier worth inspection. RMSZ is the root-mean-square of all Z scores of the bond lengths (or angles).

Mol	Chain	Bond lengths		Bond angles	
		RMSZ	$\# Z > 5$	RMSZ	$\# Z > 5$
1	A	0.92	3/2262 (0.1%)	1.19	18/3058 (0.6%)
1	B	0.94	1/1956 (0.1%)	1.28	27/2646 (1.0%)
1	C	0.83	1/1953 (0.1%)	1.19	20/2644 (0.8%)
1	D	0.85	0/2299	1.16	15/3108 (0.5%)
1	E	1.02	7/2210 (0.3%)	1.25	23/2987 (0.8%)
1	F	0.86	1/1922 (0.1%)	1.22	20/2602 (0.8%)
All	All	0.91	13/12602 (0.1%)	1.22	123/17045 (0.7%)

Chiral center outliers are detected by calculating the chiral volume of a chiral center and verifying if the center is modelled as a planar moiety or with the opposite hand. A planarity outlier is detected by checking planarity of atoms in a peptide group, atoms in a mainchain group or atoms of a sidechain that are expected to be planar.

Mol	Chain	#Chirality outliers	#Planarity outliers
1	C	1	1
1	E	0	1
All	All	1	2

The worst 5 of 13 bond length outliers are listed below:

Mol	Chain	Res	Type	Atoms	Z	Observed(Å)	Ideal(Å)
1	A	369	VAL	CA-CB	-8.23	1.37	1.54
1	E	358	ILE	CA-CB	-6.23	1.40	1.54
1	E	335	ARG	CG-CD	-6.14	1.36	1.51
1	A	251	VAL	CB-CG1	-6.00	1.40	1.52
1	C	251	VAL	CB-CG1	-6.00	1.40	1.52

The worst 5 of 123 bond angle outliers are listed below:

Mol	Chain	Res	Type	Atoms	Z	Observed(°)	Ideal(°)
1	F	353	ASP	CB-CG-OD2	11.65	128.78	118.30
1	F	324	ASP	CB-CG-OD2	10.32	127.58	118.30
1	F	233	ASP	CB-CG-OD2	9.53	126.88	118.30
1	D	145	SER	N-CA-C	-9.25	86.03	111.00
1	A	404	ASP	CB-CG-OD2	8.97	126.37	118.30

All (1) chirality outliers are listed below:

Mol	Chain	Res	Type	Atom
1	C	144	SER	CA

All (2) planarity outliers are listed below:

Mol	Chain	Res	Type	Group
1	C	143	GLY	Peptide
1	E	354	TRP	Peptide

5.2 Too-close contacts [i](#)

In the following table, the Non-H and H(model) columns list the number of non-hydrogen atoms and hydrogen atoms in the chain respectively. The H(added) column lists the number of hydrogen atoms added and optimized by MolProbity. The Clashes column lists the number of clashes within the asymmetric unit, whereas Symm-Clashes lists symmetry related clashes.

Mol	Chain	Non-H	H(model)	H(added)	Clashes	Symm-Clashes
1	A	2234	0	2233	283	3
1	B	1929	0	1905	268	1
1	C	1925	0	1899	265	2
1	D	2270	0	2280	278	0
1	E	2183	0	2185	299	1
1	F	1895	0	1871	265	1
2	A	5	0	0	0	0
2	B	5	0	0	1	0
2	C	5	0	0	3	0
2	D	5	0	0	3	0
2	F	5	0	0	2	0
3	E	31	0	12	11	0
4	A	16	0	0	11	0
4	B	20	0	0	16	0
4	C	16	0	0	12	0
4	D	23	0	0	16	0
4	E	17	0	0	9	0

Continued on next page...

Continued from previous page...

Mol	Chain	Non-H	H(model)	H(added)	Clashes	Symm-Clashes
4	F	10	0	0	6	0
All	All	12594	0	12385	1635	4

The all-atom clashscore is defined as the number of clashes found per 1000 atoms (including hydrogen atoms). The all-atom clashscore for this structure is 66.

The worst 5 of 1635 close contacts within the same asymmetric unit are listed below, sorted by their clash magnitude.

Atom-1	Atom-2	Interatomic distance (Å)	Clash overlap (Å)
1:E:352:TYR:CD2	1:E:353:ASP:N	1.80	1.48
1:A:377:ILE:HD12	1:A:378:SER:N	1.44	1.30
1:D:352:TYR:CD2	1:D:353:ASP:N	2.01	1.27
1:D:255:ARG:HD2	4:D:2005:HOH:O	1.30	1.27
1:B:354:TRP:HB2	1:B:355:PRO:CD	1.62	1.25

All (4) symmetry-related close contacts are listed below. The label for Atom-2 includes the symmetry operator and encoded unit-cell translations to be applied.

Atom-1	Atom-2	Interatomic distance (Å)	Clash overlap (Å)
1:B:374:GLY:CA	1:C:376:TYR:OH[3_455]	1.96	0.24
1:A:144:SER:OG	1:F:144:SER:O[1_655]	2.02	0.18
1:A:162:ASP:OD2	1:C:334:ASN:OD1[3_555]	2.05	0.15
1:A:287:GLU:OE2	1:E:420:ASN:ND2[4_555]	2.17	0.03

5.3 Torsion angles ⓘ

5.3.1 Protein backbone ⓘ

In the following table, the Percentiles column shows the percent Ramachandran outliers of the chain as a percentile score with respect to all X-ray entries followed by that with respect to entries of similar resolution.

The Analysed column shows the number of residues for which the backbone conformation was analysed, and the total number of residues.

Mol	Chain	Analysed	Favoured	Allowed	Outliers	Percentiles
1	A	286/304 (94%)	213 (74%)	55 (19%)	18 (6%)	1 9
1	B	249/304 (82%)	185 (74%)	48 (19%)	16 (6%)	1 8

Continued on next page...

Continued from previous page...

Mol	Chain	Analysed	Favoured	Allowed	Outliers	Percentiles	
1	C	250/304 (82%)	182 (73%)	51 (20%)	17 (7%)	1	7
1	D	293/304 (96%)	227 (78%)	48 (16%)	18 (6%)	2	10
1	E	279/304 (92%)	201 (72%)	53 (19%)	25 (9%)	1	4
1	F	243/304 (80%)	176 (72%)	48 (20%)	19 (8%)	1	5
All	All	1600/1824 (88%)	1184 (74%)	303 (19%)	113 (7%)	1	6

5 of 113 Ramachandran outliers are listed below:

Mol	Chain	Res	Type
1	A	199	ALA
1	A	201	LEU
1	A	216	GLY
1	A	260	ARG
1	A	270	THR

5.3.2 Protein sidechains ⓘ

In the following table, the Percentiles column shows the percent sidechain outliers of the chain as a percentile score with respect to all X-ray entries followed by that with respect to entries of similar resolution.

The Analysed column shows the number of residues for which the sidechain conformation was analysed, and the total number of residues.

Mol	Chain	Analysed	Rotameric	Outliers	Percentiles	
1	A	231/251 (92%)	198 (86%)	33 (14%)	4	18
1	B	197/251 (78%)	167 (85%)	30 (15%)	3	16
1	C	197/251 (78%)	163 (83%)	34 (17%)	2	12
1	D	234/251 (93%)	196 (84%)	38 (16%)	3	14
1	E	226/251 (90%)	190 (84%)	36 (16%)	3	14
1	F	195/251 (78%)	164 (84%)	31 (16%)	3	14
All	All	1280/1506 (85%)	1078 (84%)	202 (16%)	3	14

5 of 202 residues with a non-rotameric sidechain are listed below:

Mol	Chain	Res	Type
1	C	358	ILE
1	D	244	ASP

Continued on next page...

Continued from previous page...

Mol	Chain	Res	Type
1	F	281	THR
1	C	365	ILE
1	D	171	SER

Some sidechains can be flipped to improve hydrogen bonding and reduce clashes. 5 of 30 such sidechains are listed below:

Mol	Chain	Res	Type
1	C	149	GLN
1	C	351	HIS
1	E	351	HIS
1	C	314	GLN
1	C	357	ASN

5.3.3 RNA [i](#)

There are no RNA molecules in this entry.

5.4 Non-standard residues in protein, DNA, RNA chains [i](#)

There are no non-standard protein/DNA/RNA residues in this entry.

5.5 Carbohydrates [i](#)

There are no carbohydrates in this entry.

5.6 Ligand geometry [i](#)

6 ligands are modelled in this entry.

In the following table, the Counts columns list the number of bonds (or angles) for which Mogul statistics could be retrieved, the number of bonds (or angles) that are observed in the model and the number of bonds (or angles) that are defined in the chemical component dictionary. The Link column lists molecule types, if any, to which the group is linked. The Z score for a bond length (or angle) is the number of standard deviations the observed value is removed from the expected value. A bond length (or angle) with $|Z| > 2$ is considered an outlier worth inspection. RMSZ is the root-mean-square of all Z scores of the bond lengths (or angles).

Mol	Type	Chain	Res	Link	Bond lengths			Bond angles		
					Counts	RMSZ	$\# Z > 2$	Counts	RMSZ	$\# Z > 2$
2	PO4	A	1442	-	4,4,4	0.68	0	6,6,6	0.84	0

Mol	Type	Chain	Res	Link	Bond lengths			Bond angles		
					Counts	RMSZ	# Z > 2	Counts	RMSZ	# Z > 2
2	PO4	B	1390	-	4,4,4	0.58	0	6,6,6	0.86	0
2	PO4	C	1391	-	4,4,4	0.78	0	6,6,6	0.41	0
2	PO4	D	1442	-	4,4,4	0.81	0	6,6,6	0.74	0
3	ATP	E	1442	-	27,33,33	1.07	2 (7%)	25,52,52	2.46	4 (16%)
2	PO4	F	1390	-	4,4,4	0.68	0	6,6,6	0.35	0

In the following table, the Chirals column lists the number of chiral outliers, the number of chiral centers analysed, the number of these observed in the model and the number defined in the chemical component dictionary. Similar counts are reported in the Torsion and Rings columns. '-' means no outliers of that kind were identified.

Mol	Type	Chain	Res	Link	Chirals	Torsions	Rings
2	PO4	A	1442	-	-	0/0/0/0	0/0/0/0
2	PO4	B	1390	-	-	0/0/0/0	0/0/0/0
2	PO4	C	1391	-	-	0/0/0/0	0/0/0/0
2	PO4	D	1442	-	-	0/0/0/0	0/0/0/0
3	ATP	E	1442	-	-	0/18/38/38	0/3/3/3
2	PO4	F	1390	-	-	0/0/0/0	0/0/0/0

All (2) bond length outliers are listed below:

Mol	Chain	Res	Type	Atoms	Z	Observed(Å)	Ideal(Å)
3	E	1442	ATP	C2-N1	2.40	1.38	1.33
3	E	1442	ATP	C2-N3	3.47	1.38	1.32

All (4) bond angle outliers are listed below:

Mol	Chain	Res	Type	Atoms	Z	Observed(°)	Ideal(°)
3	E	1442	ATP	N3-C2-N1	-10.41	119.79	128.86
3	E	1442	ATP	C5'-C4'-C3'	-4.43	98.41	115.29
3	E	1442	ATP	C4-C5-N7	-2.08	107.40	109.41
3	E	1442	ATP	C2'-C3'-C4'	2.12	106.76	102.62

There are no chirality outliers.

There are no torsion outliers.

There are no ring outliers.

5 monomers are involved in 20 short contacts:

Mol	Chain	Res	Type	Clashes	Symm-Clashes
2	B	1390	PO4	1	0

Continued on next page...

Continued from previous page...

Mol	Chain	Res	Type	Clashes	Symm-Clashes
2	C	1391	PO4	3	0
2	D	1442	PO4	3	0
3	E	1442	ATP	11	0
2	F	1390	PO4	2	0

5.7 Other polymers [i](#)

There are no such residues in this entry.

5.8 Polymer linkage issues [i](#)

There are no chain breaks in this entry.

6 Fit of model and data [i](#)

6.1 Protein, DNA and RNA chains [i](#)

In the following table, the column labelled ‘#RSRZ> 2’ contains the number (and percentage) of RSRZ outliers, followed by percent RSRZ outliers for the chain as percentile scores relative to all X-ray entries and entries of similar resolution. The OWAB column contains the minimum, median, 95th percentile and maximum values of the occupancy-weighted average B-factor per residue. The column labelled ‘Q< 0.9’ lists the number of (and percentage) of residues with an average occupancy less than 0.9.

Mol	Chain	Analysed	<RSRZ>	#RSRZ>2	OWAB(Å ²)	Q<0.9
1	A	292/304 (96%)	0.11	16 (5%) 26 10	28, 54, 98, 142	0
1	B	251/304 (82%)	-0.07	7 (2%) 53 25	23, 53, 104, 130	0
1	C	252/304 (82%)	0.31	20 (7%) 13 5	28, 58, 97, 129	0
1	D	297/304 (97%)	0.09	15 (5%) 29 12	23, 54, 91, 110	0
1	E	285/304 (93%)	-0.11	8 (2%) 53 25	23, 55, 90, 120	0
1	F	247/304 (81%)	-0.04	9 (3%) 43 18	24, 56, 93, 144	0
All	All	1624/1824 (89%)	0.05	75 (4%) 33 13	23, 55, 97, 144	0

The worst 5 of 75 RSRZ outliers are listed below:

Mol	Chain	Res	Type	RSRZ
1	F	216	GLY	8.2
1	F	217	ALA	7.0
1	A	219	THR	6.4
1	D	334	ASN	5.1
1	A	217	ALA	4.9

6.2 Non-standard residues in protein, DNA, RNA chains [i](#)

There are no non-standard protein/DNA/RNA residues in this entry.

6.3 Carbohydrates [i](#)

There are no carbohydrates in this entry.

6.4 Ligands [i](#)

In the following table, the Atoms column lists the number of modelled atoms in the group and the number defined in the chemical component dictionary. LLDF column lists the quality of electron density of the group with respect to its neighbouring residues in protein, DNA or RNA chains. The B-factors column lists the minimum, median, 95th percentile and maximum values of B factors of atoms in the group. The column labelled 'Q< 0.9' lists the number of atoms with occupancy less than 0.9.

Mol	Type	Chain	Res	Atoms	RSCC	RSR	LLDF	B-factors(Å ²)	Q<0.9
2	PO4	D	1442	5/5	0.45	1.01	17.05	112,119,121,126	5
2	PO4	A	1442	5/5	0.48	0.89	16.12	118,120,121,127	5
2	PO4	F	1390	5/5	0.75	0.92	15.55	121,124,137,146	5
2	PO4	B	1390	5/5	0.73	0.72	11.86	120,122,129,131	5
2	PO4	C	1391	5/5	0.71	0.79	10.37	120,125,129,130	5
3	ATP	E	1442	31/31	0.61	0.62	6.27	123,130,139,142	31

6.5 Other polymers [i](#)

There are no such residues in this entry.