



# Full wwPDB X-ray Structure Validation Report ⓘ

Feb 13, 2017 – 06:09 pm GMT

PDB ID : 1OKK  
Title : HOMO-HETERODIMERIC COMPLEX OF THE SRP GTPASES  
Authors : Focia, P.J.; Freymann, D.M.  
Deposited on : 2003-07-26  
Resolution : 2.05 Å(reported)

This is a Full wwPDB X-ray Structure Validation Report for a publicly released PDB entry.

We welcome your comments at [validation@mail.wwpdb.org](mailto:validation@mail.wwpdb.org)

A user guide is available at

<http://wwpdb.org/validation/2016/XrayValidationReportHelp>

with specific help available everywhere you see the ⓘ symbol.

---

The following versions of software and data (see [references ⓘ](#)) were used in the production of this report:

MolProbity : 4.02b-467  
Mogul : 1.7.2 (RC1), CSD as538be (2017)  
Xtriage (Phenix) : 1.9-1692  
EDS : trunk28620  
Percentile statistics : 20161228.v01 (using entries in the PDB archive December 28th 2016)  
Refmac : 5.8.0135  
CCP4 : 6.5.0  
Ideal geometry (proteins) : Engh & Huber (2001)  
Ideal geometry (DNA, RNA) : Parkinson et al. (1996)  
Validation Pipeline (wwPDB-VP) : recalc28949

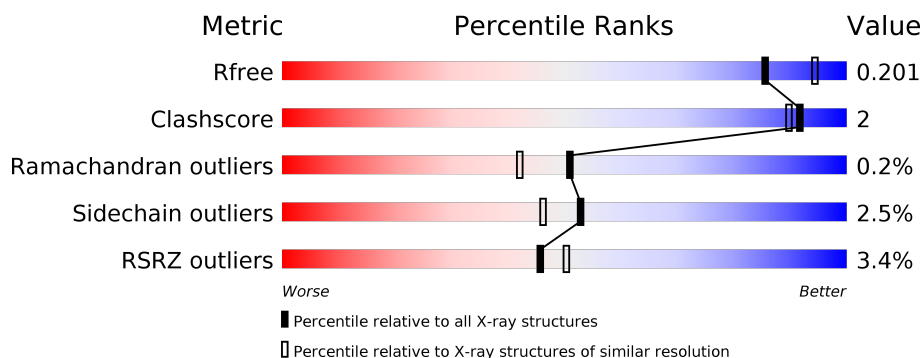
# 1 Overall quality at a glance

The following experimental techniques were used to determine the structure:

## *X-RAY DIFFRACTION*

The reported resolution of this entry is 2.05 Å.

Percentile scores (ranging between 0-100) for global validation metrics of the entry are shown in the following graphic. The table shows the number of entries on which the scores are based.



Metric	Whole archive (#Entries)	Similar resolution (#Entries, resolution range(Å))
$R_{free}$	100719	1316 (2.04-2.04)
Clashscore	112137	1394 (2.04-2.04)
Ramachandran outliers	110173	1383 (2.04-2.04)
Sidechain outliers	110143	1383 (2.04-2.04)
RSRZ outliers	101464	1319 (2.04-2.04)

The table below summarises the geometric issues observed across the polymeric chains and their fit to the electron density. The red, orange, yellow and green segments on the lower bar indicate the fraction of residues that contain outliers for  $\geq 3$ , 2, 1 and 0 types of geometric quality criteria. A grey segment represents the fraction of residues that are not modelled. The numeric value for each fraction is indicated below the corresponding segment, with a dot representing fractions  $\leq 5\%$ . The upper red bar (where present) indicates the fraction of residues that have poor fit to the electron density. The numeric value is given above the bar.

Mol	Chain	Length	Quality of chain
1	A	294	<div> <div style="width: 100%; height: 10px; background: linear-gradient(to right, red 0%, red 1%, orange 1%, orange 91%, yellow 91%, yellow 99%, green 99%, green 100%);"></div> <div style="display: flex; justify-content: space-between; padding: 0 5px;"> <span>%</span> <span>91%</span> <span>6% ..</span> </div> </div>
2	D	303	<div> <div style="width: 100%; height: 10px; background: linear-gradient(to right, red 0%, red 6%, orange 6%, orange 81%, yellow 81%, yellow 88%, green 88%, green 95%, green 100%);"></div> <div style="display: flex; justify-content: space-between; padding: 0 5px;"> <span>6%</span> <span>81%</span> <span>7%</span> <span>13%</span> </div> </div>

## 2 Entry composition [i](#)

There are 8 unique types of molecules in this entry. The entry contains 4990 atoms, of which 0 are hydrogens and 0 are deuteriums.

In the tables below, the ZeroOcc column contains the number of atoms modelled with zero occupancy, the AltConf column contains the number of residues with at least one atom in alternate conformation and the Trace column contains the number of residues modelled with at most 2 atoms.

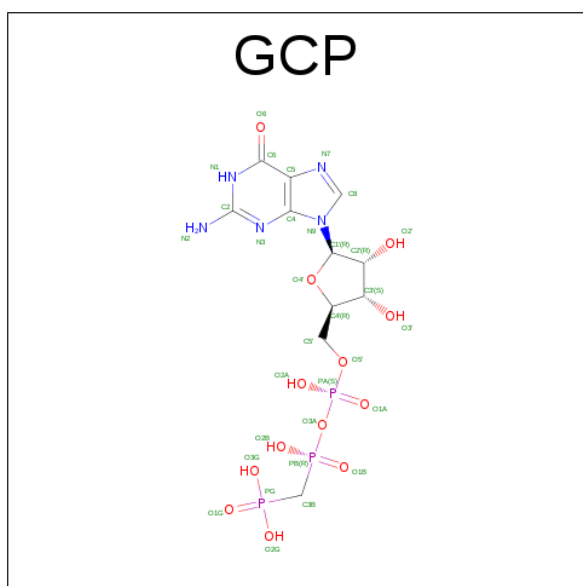
- Molecule 1 is a protein called SIGNAL RECOGNITION PARTICLE PROTEIN.

Mol	Chain	Residues	Atoms					ZeroOcc	AltConf	Trace
1	A	290	Total	C	N	O	S	0	3	0
			2256	1414	411	427	4			

- Molecule 2 is a protein called CELL DIVISION PROTEIN FTSY.

Mol	Chain	Residues	Atoms					ZeroOcc	AltConf	Trace
2	D	265	Total	C	N	O	S	0	1	0
			2011	1287	341	377	6			

- Molecule 3 is PHOSPHOMETHYLPHOSPHONIC ACID GUANYLATE ESTER (three-letter code: GCP) (formula:  $C_{11}H_{18}N_5O_{13}P_3$ ).

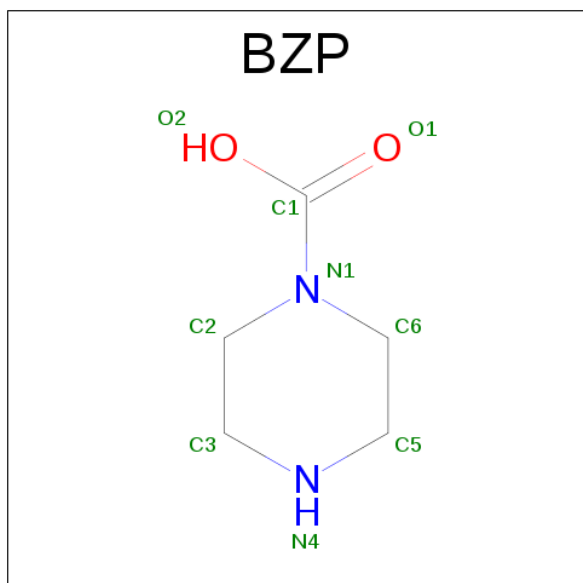


Mol	Chain	Residues	Atoms					ZeroOcc	AltConf
3	A	1	Total	C	N	O	P	0	0
			32	11	5	13	3		
3	D	1	Total	C	N	O	P	0	0
			32	11	5	13	3		

- Molecule 4 is MAGNESIUM ION (three-letter code: MG) (formula: Mg).

Mol	Chain	Residues	Atoms		ZeroOcc	AltConf
4	A	1	Total	Mg	0	0
			1	1		
4	D	1	Total	Mg	0	0
			1	1		

- Molecule 5 is N1-CARBOXYPIPERAZINE (three-letter code: BZP) (formula: C<sub>5</sub>H<sub>10</sub>N<sub>2</sub>O<sub>2</sub>).



Mol	Chain	Residues	Atoms				ZeroOcc	AltConf
5	A	1	Total	C	N	O	0	0
			9	5	2	2		
5	A	1	Total	C	N	O	0	0
			9	5	2	2		

- Molecule 6 is SULFATE ION (three-letter code: SO4) (formula: O<sub>4</sub>S).



Mol	Chain	Residues	Atoms			ZeroOcc	AltConf
6	A	1	Total	O	S	0	0
			5	4	1		
6	A	1	Total	O	S	0	0
			5	4	1		
6	A	1	Total	O	S	0	0
			5	4	1		
6	A	1	Total	O	S	0	0
			5	4	1		
6	A	1	Total	O	S	0	0
			5	4	1		
6	A	1	Total	O	S	0	0
			5	4	1		
6	A	1	Total	O	S	0	0
			5	4	1		
6	D	1	Total	O	S	0	0
			5	4	1		

- Molecule 7 is 1,2-ETHANEDIOL (three-letter code: EDO) (formula: C<sub>2</sub>H<sub>6</sub>O<sub>2</sub>).



Mol	Chain	Residues	Atoms			ZeroOcc	AltConf
7	D	1	Total	C	O	0	0
			4	2	2		
7	D	1	Total	C	O	0	0
			4	2	2		
7	D	1	Total	C	O	0	0
			4	2	2		
7	D	1	Total	C	O	0	0
			4	2	2		

- Molecule 8 is water.

Mol	Chain	Residues	Atoms		ZeroOcc	AltConf
8	A	357	Total	O	0	0
			357	357		
8	D	211	Total	O	0	0
			211	211		

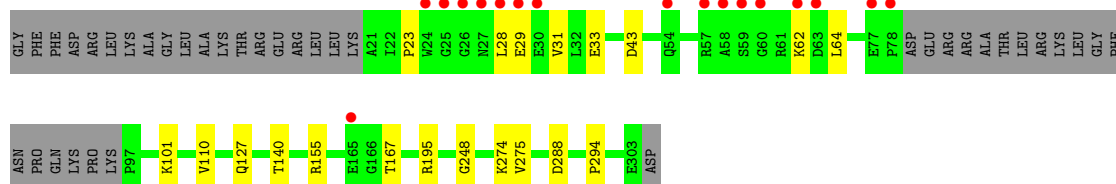
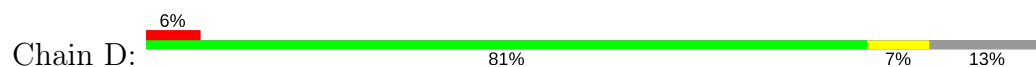
### 3 Residue-property plots [i](#)

These plots are drawn for all protein, RNA and DNA chains in the entry. The first graphic for a chain summarises the proportions of the various outlier classes displayed in the second graphic. The second graphic shows the sequence view annotated by issues in geometry and electron density. Residues are color-coded according to the number of geometric quality criteria for which they contain at least one outlier: green = 0, yellow = 1, orange = 2 and red = 3 or more. A red dot above a residue indicates a poor fit to the electron density ( $RSRZ > 2$ ). Stretches of 2 or more consecutive residues without any outlier are shown as a green connector. Residues present in the sample, but not in the model, are shown in grey.

- Molecule 1: SIGNAL RECOGNITION PARTICLE PROTEIN



- Molecule 2: CELL DIVISION PROTEIN FTSY



## 4 Data and refinement statistics

Property	Value	Source
Space group	P 41 21 2	Depositor
Cell constants a, b, c, $\alpha$ , $\beta$ , $\gamma$	98.91Å 98.91Å 130.75Å 90.00° 90.00° 90.00°	Depositor
Resolution (Å)	24.73 – 2.05 24.73 – 2.05	Depositor EDS
% Data completeness (in resolution range)	97.7 (24.73-2.05) 97.5 (24.73-2.05)	Depositor EDS
$R_{merge}$	0.07	Depositor
$R_{sym}$	(Not available)	Depositor
$\langle I/\sigma(I) \rangle$ <sup>1</sup>	9.36 (at 2.04Å)	Xtriage
Refinement program	REFMAC 5.0	Depositor
R, $R_{free}$	0.154 , 0.193 0.165 , 0.201	Depositor DCC
$R_{free}$ test set	2046 reflections (5.35%)	DCC
Wilson B-factor (Å <sup>2</sup> )	19.3	Xtriage
Anisotropy	0.054	Xtriage
Bulk solvent $k_{sol}$ (e/Å <sup>3</sup> ), $B_{sol}$ (Å <sup>2</sup> )	0.36 , 51.3	EDS
L-test for twinning <sup>2</sup>	$\langle  L  \rangle = 0.49$ , $\langle L^2 \rangle = 0.33$	Xtriage
Estimated twinning fraction	No twinning to report.	Xtriage
$F_o, F_c$ correlation	0.95	EDS
Total number of atoms	4990	wwPDB-VP
Average B, all atoms (Å <sup>2</sup> )	23.0	wwPDB-VP

Xtriage's analysis on translational NCS is as follows: *The largest off-origin peak in the Patterson function is 3.38% of the height of the origin peak. No significant pseudotranslation is detected.*

<sup>1</sup>Intensities estimated from amplitudes.

<sup>2</sup>Theoretical values of  $\langle |L| \rangle$ ,  $\langle L^2 \rangle$  for acentric reflections are 0.5, 0.333 respectively for untwinned datasets, and 0.375, 0.2 for perfectly twinned datasets.



## 5 Model quality [i](#)

### 5.1 Standard geometry [i](#)

Bond lengths and bond angles in the following residue types are not validated in this section: SO4, GCP, MG, EDO, BZP

The Z score for a bond length (or angle) is the number of standard deviations the observed value is removed from the expected value. A bond length (or angle) with  $|Z| > 5$  is considered an outlier worth inspection. RMSZ is the root-mean-square of all Z scores of the bond lengths (or angles).

Mol	Chain	Bond lengths		Bond angles	
		RMSZ	$\# Z  > 5$	RMSZ	$\# Z  > 5$
1	A	0.51	0/2280	0.78	4/3073 (0.1%)
2	D	0.46	0/2043	0.70	2/2762 (0.1%)
All	All	0.49	0/4323	0.75	6/5835 (0.1%)

There are no bond length outliers.

All (6) bond angle outliers are listed below:

Mol	Chain	Res	Type	Atoms	Z	Observed(°)	Ideal(°)
2	D	43	ASP	CB-CG-OD2	6.52	124.17	118.30
1	A	103	LEU	CA-CB-CG	-5.86	101.81	115.30
2	D	288	ASP	CB-CG-OD2	5.61	123.35	118.30
1	A	50	ASP	CB-CG-OD2	5.60	123.34	118.30
1	A	187	ASP	CB-CG-OD2	5.47	123.22	118.30
1	A	146	ARG	NE-CZ-NH1	5.06	122.83	120.30

There are no chirality outliers.

There are no planarity outliers.

### 5.2 Too-close contacts [i](#)

In the following table, the Non-H and H(model) columns list the number of non-hydrogen atoms and hydrogen atoms in the chain respectively. The H(added) column lists the number of hydrogen atoms added and optimized by MolProbity. The Clashes column lists the number of clashes within the asymmetric unit, whereas Symm-Clashes lists symmetry related clashes.

Mol	Chain	Non-H	H(model)	H(added)	Clashes	Symm-Clashes
1	A	2256	0	2344	10	0
2	D	2011	0	2083	7	0
3	A	32	0	14	0	0

*Continued on next page...*

*Continued from previous page...*

Mol	Chain	Non-H	H(model)	H(added)	Clashes	Symm-Clashes
3	D	32	0	14	0	0
4	A	1	0	0	0	0
4	D	1	0	0	0	0
5	A	18	0	18	0	0
6	A	50	0	0	1	0
6	D	5	0	0	0	0
7	D	16	0	24	1	0
8	A	357	0	0	2	0
8	D	211	0	0	2	0
All	All	4990	0	4497	17	0

The all-atom clashscore is defined as the number of clashes found per 1000 atoms (including hydrogen atoms). The all-atom clashscore for this structure is 2.

All (17) close contacts within the same asymmetric unit are listed below, sorted by their clash magnitude.

Atom-1	Atom-2	Interatomic distance (Å)	Clash overlap (Å)
1:A:79:TYR:OH	1:A:285:GLU:HG3	1.75	0.86
1:A:103:LEU:HD13	1:A:115:ALA:HB2	1.82	0.61
2:D:29:GLU:OE2	8:D:2005:HOH:O	2.16	0.61
1:A:290:ARG:HD2	6:A:1301:SO4:O3	2.07	0.54
2:D:110:VAL:HA	2:D:195:ARG:O	2.14	0.48
1:A:80:GLU:HG2	8:A:2051:HOH:O	2.13	0.47
1:A:54:ARG:NE	1:A:58:GLU:OE2	2.46	0.47
1:A:273:SER:HB3	1:A:278:GLY:HA3	1.97	0.47
1:A:146:ARG:HD3	1:A:158:GLU:OE2	2.17	0.45
2:D:155:ARG:HD3	7:D:1312:EDO:H21	1.97	0.45
2:D:140:THR:HG21	2:D:167:THR:CG2	2.48	0.44
2:D:23:PRO:O	2:D:31:VAL:HG22	2.19	0.43
1:A:247:LEU:HD12	1:A:270:ALA:HB1	2.02	0.42
1:A:4:GLN:NE2	8:A:2001:HOH:O	2.39	0.42
2:D:28:LEU:HD13	2:D:64:LEU:HD11	2.02	0.41
2:D:275:VAL:HG22	8:D:2169:HOH:O	2.21	0.40
1:A:5:LEU:HB2	1:A:10:GLN:HG3	2.03	0.40

There are no symmetry-related clashes.

## 5.3 Torsion angles [i](#)

### 5.3.1 Protein backbone [i](#)

In the following table, the Percentiles column shows the percent Ramachandran outliers of the chain as a percentile score with respect to all X-ray entries followed by that with respect to entries of similar resolution.

The Analysed column shows the number of residues for which the backbone conformation was analysed, and the total number of residues.

Mol	Chain	Analysed	Favoured	Allowed	Outliers	Percentiles	
1	A	291/294 (99%)	290 (100%)	1 (0%)	0	100	100
2	D	262/303 (86%)	255 (97%)	6 (2%)	1 (0%)	38	27
All	All	553/597 (93%)	545 (99%)	7 (1%)	1 (0%)	51	42

All (1) Ramachandran outliers are listed below:

Mol	Chain	Res	Type
2	D	248	GLY

### 5.3.2 Protein sidechains [i](#)

In the following table, the Percentiles column shows the percent sidechain outliers of the chain as a percentile score with respect to all X-ray entries followed by that with respect to entries of similar resolution.

The Analysed column shows the number of residues for which the sidechain conformation was analysed, and the total number of residues.

Mol	Chain	Analysed	Rotameric	Outliers	Percentiles	
1	A	232/233 (100%)	227 (98%)	5 (2%)	57	51
2	D	210/241 (87%)	204 (97%)	6 (3%)	48	40
All	All	442/474 (93%)	431 (98%)	11 (2%)	53	46

All (11) residues with a non-rotameric sidechain are listed below:

Mol	Chain	Res	Type
1	A	4	GLN
1	A	98	ARG
1	A	103	LEU
1	A	125	LYS
1	A	204	ARG

*Continued on next page...*

*Continued from previous page...*

Mol	Chain	Res	Type
2	D	33	GLU
2	D	62	LYS
2	D	101	LYS
2	D	127	GLN
2	D	274	LYS
2	D	294	PRO

Some sidechains can be flipped to improve hydrogen bonding and reduce clashes. There are no such sidechains identified.

### 5.3.3 RNA ⓘ

There are no RNA molecules in this entry.

## 5.4 Non-standard residues in protein, DNA, RNA chains ⓘ

There are no non-standard protein/DNA/RNA residues in this entry.

## 5.5 Carbohydrates ⓘ

There are no carbohydrates in this entry.

## 5.6 Ligand geometry ⓘ

Of 21 ligands modelled in this entry, 2 are monoatomic - leaving 19 for Mogul analysis.

In the following table, the Counts columns list the number of bonds (or angles) for which Mogul statistics could be retrieved, the number of bonds (or angles) that are observed in the model and the number of bonds (or angles) that are defined in the chemical component dictionary. The Link column lists molecule types, if any, to which the group is linked. The Z score for a bond length (or angle) is the number of standard deviations the observed value is removed from the expected value. A bond length (or angle) with  $|Z| > 2$  is considered an outlier worth inspection. RMSZ is the root-mean-square of all Z scores of the bond lengths (or angles).

Mol	Type	Chain	Res	Link	Bond lengths			Bond angles		
					Counts	RMSZ	$\# Z  > 2$	Counts	RMSZ	$\# Z  > 2$
3	GCP	A	1001	4	25,34,34	2.71	5 (20%)	28,54,54	1.50	5 (17%)
5	BZP	A	1296	-	6,9,9	0.58	0	8,11,11	3.42	6 (75%)
5	BZP	A	1297	-	6,9,9	0.47	0	8,11,11	1.59	1 (12%)
6	SO4	A	1298	-	4,4,4	0.22	0	6,6,6	0.39	0

Mol	Type	Chain	Res	Link	Bond lengths			Bond angles		
					Counts	RMSZ	# Z  > 2	Counts	RMSZ	# Z  > 2
6	SO4	A	1299	-	4,4,4	0.14	0	6,6,6	0.23	0
6	SO4	A	1300	-	4,4,4	0.21	0	6,6,6	0.47	0
6	SO4	A	1301	-	4,4,4	0.34	0	6,6,6	0.36	0
6	SO4	A	1302	-	4,4,4	0.16	0	6,6,6	0.26	0
6	SO4	A	1303	-	4,4,4	0.16	0	6,6,6	0.19	0
6	SO4	A	1304	-	4,4,4	0.13	0	6,6,6	0.29	0
6	SO4	A	1305	-	4,4,4	0.16	0	6,6,6	0.31	0
6	SO4	A	1306	-	4,4,4	0.13	0	6,6,6	0.15	0
6	SO4	A	1307	-	4,4,4	0.10	0	6,6,6	0.14	0
3	GCP	D	1001	4	25,34,34	2.87	7 (28%)	28,54,54	1.54	7 (25%)
6	SO4	D	1308	-	4,4,4	0.14	0	6,6,6	0.31	0
7	EDO	D	1309	-	3,3,3	0.26	0	2,2,2	0.32	0
7	EDO	D	1310	-	3,3,3	0.26	0	2,2,2	0.25	0
7	EDO	D	1311	-	3,3,3	0.24	0	2,2,2	0.15	0
7	EDO	D	1312	-	3,3,3	0.28	0	2,2,2	0.22	0

In the following table, the Chirals column lists the number of chiral outliers, the number of chiral centers analysed, the number of these observed in the model and the number defined in the chemical component dictionary. Similar counts are reported in the Torsion and Rings columns. '-' means no outliers of that kind were identified.

Mol	Type	Chain	Res	Link	Chirals	Torsions	Rings
3	GCP	A	1001	4	-	0/18/38/38	0/3/3/3
5	BZP	A	1296	-	-	0/0/12/12	0/1/1/1
5	BZP	A	1297	-	-	0/0/12/12	0/1/1/1
6	SO4	A	1298	-	-	0/0/0/0	0/0/0/0
6	SO4	A	1299	-	-	0/0/0/0	0/0/0/0
6	SO4	A	1300	-	-	0/0/0/0	0/0/0/0
6	SO4	A	1301	-	-	0/0/0/0	0/0/0/0
6	SO4	A	1302	-	-	0/0/0/0	0/0/0/0
6	SO4	A	1303	-	-	0/0/0/0	0/0/0/0
6	SO4	A	1304	-	-	0/0/0/0	0/0/0/0
6	SO4	A	1305	-	-	0/0/0/0	0/0/0/0
6	SO4	A	1306	-	-	0/0/0/0	0/0/0/0
6	SO4	A	1307	-	-	0/0/0/0	0/0/0/0
3	GCP	D	1001	4	-	0/18/38/38	0/3/3/3
6	SO4	D	1308	-	-	0/0/0/0	0/0/0/0
7	EDO	D	1309	-	-	0/1/1/1	0/0/0/0
7	EDO	D	1310	-	-	0/1/1/1	0/0/0/0
7	EDO	D	1311	-	-	0/1/1/1	0/0/0/0
7	EDO	D	1312	-	-	0/1/1/1	0/0/0/0

All (12) bond length outliers are listed below:

Mol	Chain	Res	Type	Atoms	Z	Observed(Å)	Ideal(Å)
3	D	1001	GCP	C4-N9	-12.01	1.31	1.47
3	A	1001	GCP	C4-N9	-11.25	1.32	1.47
3	D	1001	GCP	C8-N9	-3.90	1.34	1.46
3	A	1001	GCP	C8-N9	-3.78	1.35	1.46
3	A	1001	GCP	PB-O2B	-3.45	1.48	1.56
3	A	1001	GCP	C5-C6	-3.02	1.47	1.53
3	D	1001	GCP	PB-O2B	-2.92	1.49	1.56
3	D	1001	GCP	C5-C6	-2.85	1.47	1.53
3	D	1001	GCP	C2-N1	-2.35	1.34	1.44
3	A	1001	GCP	PG-O3G	-2.08	1.50	1.54
3	D	1001	GCP	PG-O2G	-2.00	1.50	1.54
3	D	1001	GCP	PB-O3A	2.42	1.61	1.58

All (19) bond angle outliers are listed below:

Mol	Chain	Res	Type	Atoms	Z	Observed(°)	Ideal(°)
3	A	1001	GCP	O3'-C3'-C4'	-3.48	100.92	111.09
5	A	1296	BZP	C2-N1-C1	-3.29	117.16	121.70
5	A	1296	BZP	C6-N1-C1	-3.09	117.43	121.70
3	D	1001	GCP	O3'-C3'-C4'	-2.85	102.75	111.09
3	D	1001	GCP	O3'-C3'-C2'	-2.44	104.02	111.83
3	D	1001	GCP	C2'-C1'-N9	2.19	119.02	113.34
5	A	1296	BZP	C5-C6-N1	2.26	115.96	110.55
3	D	1001	GCP	O2'-C2'-C3'	2.31	119.23	111.83
3	A	1001	GCP	O2B-PB-O1B	2.32	117.85	110.09
5	A	1296	BZP	C3-C2-N1	2.46	116.44	110.55
3	A	1001	GCP	C2'-C3'-C4'	2.47	107.44	102.62
3	A	1001	GCP	O2'-C2'-C3'	2.60	120.16	111.83
3	D	1001	GCP	O2B-PB-O1B	2.61	118.84	110.09
3	D	1001	GCP	O2'-C2'-C1'	2.69	119.03	109.96
3	A	1001	GCP	C2'-C1'-N9	3.01	121.14	113.34
3	D	1001	GCP	C2'-C3'-C4'	3.20	108.85	102.62
5	A	1297	BZP	C5-N4-C3	3.61	121.58	110.33
5	A	1296	BZP	C5-N4-C3	4.13	123.20	110.33
5	A	1296	BZP	C6-N1-C2	6.23	124.78	111.57

There are no chirality outliers.

There are no torsion outliers.

There are no ring outliers.

2 monomers are involved in 2 short contacts:

Mol	Chain	Res	Type	Clashes	Symm-Clashes
6	A	1301	SO4	1	0
7	D	1312	EDO	1	0

## 5.7 Other polymers [i](#)

There are no such residues in this entry.

## 5.8 Polymer linkage issues [i](#)

There are no chain breaks in this entry.

## 6 Fit of model and data [i](#)

### 6.1 Protein, DNA and RNA chains [i](#)

In the following table, the column labelled ‘#RSRZ> 2’ contains the number (and percentage) of RSRZ outliers, followed by percent RSRZ outliers for the chain as percentile scores relative to all X-ray entries and entries of similar resolution. The OWAB column contains the minimum, median, 95<sup>th</sup> percentile and maximum values of the occupancy-weighted average B-factor per residue. The column labelled ‘Q< 0.9’ lists the number of (and percentage) of residues with an average occupancy less than 0.9.

Mol	Chain	Analysed	<RSRZ>	#RSRZ>2	OWAB(Å <sup>2</sup> )	Q<0.9
1	A	290/294 (98%)	-0.48	2 (0%) 87 89	10, 17, 29, 44	0
2	D	265/303 (87%)	-0.01	17 (6%) 20 22	11, 19, 62, 70	0
All	All	555/597 (92%)	-0.25	19 (3%) 46 50	10, 18, 55, 70	0

All (19) RSRZ outliers are listed below:

Mol	Chain	Res	Type	RSRZ
2	D	25	GLY	5.5
2	D	62	LYS	4.6
2	D	58	ALA	4.3
1	A	4	GLN	3.4
2	D	165	GLU	3.3
2	D	63	ASP	3.1
2	D	28	LEU	2.9
2	D	78	PRO	2.8
2	D	24	TRP	2.7
2	D	27	ASN	2.7
2	D	30	GLU	2.6
2	D	57	ARG	2.5
2	D	29	GLU	2.5
2	D	26	GLY	2.3
2	D	54	GLN	2.2
2	D	60	GLY	2.2
2	D	77	GLU	2.2
2	D	59	SER	2.1
1	A	79	TYR	2.0

### 6.2 Non-standard residues in protein, DNA, RNA chains [i](#)

There are no non-standard protein/DNA/RNA residues in this entry.



### 6.3 Carbohydrates [i](#)

There are no carbohydrates in this entry.

### 6.4 Ligands [i](#)

In the following table, the Atoms column lists the number of modelled atoms in the group and the number defined in the chemical component dictionary. LLDF column lists the quality of electron density of the group with respect to its neighbouring residues in protein, DNA or RNA chains. The B-factors column lists the minimum, median, 95<sup>th</sup> percentile and maximum values of B factors of atoms in the group. The column labelled 'Q < 0.9' lists the number of atoms with occupancy less than 0.9.

Mol	Type	Chain	Res	Atoms	RSCC	RSR	LLDF	B-factors(Å <sup>2</sup> )	Q<0.9
6	SO4	A	1300	5/5	0.91	0.14	1.15	12,13,15,19	5
7	EDO	D	1310	4/4	0.88	0.09	-0.30	37,37,38,40	0
5	BZP	A	1296	9/9	0.97	0.08	-0.37	11,13,14,14	0
4	MG	D	1002	1/1	0.99	0.10	-0.46	10,10,10,10	0
3	GCP	D	1001	32/32	0.99	0.08	-0.56	7,12,14,15	0
3	GCP	A	1001	32/32	0.99	0.08	-0.71	8,11,12,14	0
6	SO4	A	1298	5/5	0.99	0.06	-0.98	22,23,25,25	0
4	MG	A	1002	1/1	0.98	0.06	-1.39	10,10,10,10	0
7	EDO	D	1309	4/4	0.99	0.05	-1.57	15,15,15,17	0
6	SO4	A	1302	5/5	0.99	0.05	-2.39	18,19,20,21	0
6	SO4	A	1307	5/5	0.89	0.18	-	43,44,44,44	5
6	SO4	A	1304	5/5	0.92	0.23	-	63,63,63,64	0
6	SO4	D	1308	5/5	0.97	0.18	-	44,44,45,46	0
6	SO4	A	1299	5/5	0.93	0.13	-	51,51,53,54	0
5	BZP	A	1297	9/9	0.77	0.23	-	57,58,59,60	0
7	EDO	D	1312	4/4	0.96	0.21	-	35,36,37,38	0
6	SO4	A	1301	5/5	0.99	0.09	-	25,29,31,32	0
7	EDO	D	1311	4/4	0.88	0.12	-	36,36,37,38	0
6	SO4	A	1306	5/5	0.90	0.23	-	72,73,73,73	0
6	SO4	A	1303	5/5	0.93	0.16	-	58,59,59,60	0
6	SO4	A	1305	5/5	0.94	0.20	-	39,39,40,40	5

### 6.5 Other polymers [i](#)

There are no such residues in this entry.