



wwPDB X-ray Structure Validation Summary Report ⓘ

Feb 15, 2017 – 02:25 am GMT

PDB ID : 2OK7
Title : Ferredoxin-NADP+ reductase from Plasmodium falciparum with 2'P-AMP
Authors : Milani, M.; Mastrangelo, E.; Bolognesi, M.
Deposited on : 2007-01-16
Resolution : 2.70 Å(reported)

This is a wwPDB X-ray Structure Validation Summary Report for a publicly released PDB entry.

We welcome your comments at validation@mail.wwpdb.org

A user guide is available at

<http://wwpdb.org/validation/2016/XrayValidationReportHelp>

with specific help available everywhere you see the ⓘ symbol.

The following versions of software and data (see [references ⓘ](#)) were used in the production of this report:

MolProbity : 4.02b-467
Mogul : 1.7.2 (RC1), CSD as538be (2017)
Xtriage (Phenix) : 1.9-1692
EDS : trunk28620
Percentile statistics : 20161228.v01 (using entries in the PDB archive December 28th 2016)
Refmac : 5.8.0135
CCP4 : 6.5.0
Ideal geometry (proteins) : Engh & Huber (2001)
Ideal geometry (DNA, RNA) : Parkinson et al. (1996)
Validation Pipeline (wwPDB-VP) : recalc28949

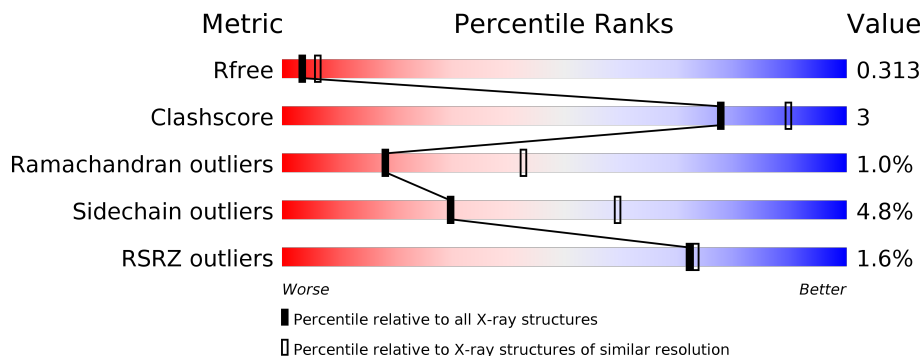
1 Overall quality at a glance

The following experimental techniques were used to determine the structure:

X-RAY DIFFRACTION

The reported resolution of this entry is 2.70 Å.

Percentile scores (ranging between 0-100) for global validation metrics of the entry are shown in the following graphic. The table shows the number of entries on which the scores are based.



Metric	Whole archive (#Entries)	Similar resolution (#Entries, resolution range(Å))
R_{free}	100719	2259 (2.70-2.70)
Clashscore	112137	2590 (2.70-2.70)
Ramachandran outliers	110173	2550 (2.70-2.70)
Sidechain outliers	110143	2550 (2.70-2.70)
RSRZ outliers	101464	2275 (2.70-2.70)

The table below summarises the geometric issues observed across the polymeric chains and their fit to the electron density. The red, orange, yellow and green segments on the lower bar indicate the fraction of residues that contain outliers for ≥ 3 , 2, 1 and 0 types of geometric quality criteria. A grey segment represents the fraction of residues that are not modelled. The numeric value for each fraction is indicated below the corresponding segment, with a dot representing fractions $\leq 5\%$. The upper red bar (where present) indicates the fraction of residues that have poor fit to the electron density. The numeric value is given above the bar.

Mol	Chain	Length	Quality of chain
1	A	316	<div> <div>%</div> <div> <div></div> <div>74%</div> <div>9%</div> <div>17%</div> </div> </div>
1	B	316	<div> <div>%</div> <div> <div></div> <div>72%</div> <div>10%</div> <div>17%</div> </div> </div>
1	C	316	<div> <div></div> <div> <div>75%</div> <div>8%</div> <div>•</div> <div>16%</div> </div> </div>
1	D	316	<div> <div>%</div> <div> <div></div> <div>73%</div> <div>8%</div> <div>•</div> <div>17%</div> </div> </div>
1	E	316	<div> <div>2%</div> <div> <div></div> <div>72%</div> <div>7%</div> <div>•</div> <div>20%</div> </div> </div>
1	F	316	<div> <div>3%</div> <div> <div></div> <div>71%</div> <div>9%</div> <div>•</div> <div>19%</div> </div> </div>

2 Entry composition

There are 5 unique types of molecules in this entry. The entry contains 13658 atoms, of which 0 are hydrogens and 0 are deuteriums.

In the tables below, the ZeroOcc column contains the number of atoms modelled with zero occupancy, the AltConf column contains the number of residues with at least one atom in alternate conformation and the Trace column contains the number of residues modelled with at most 2 atoms.

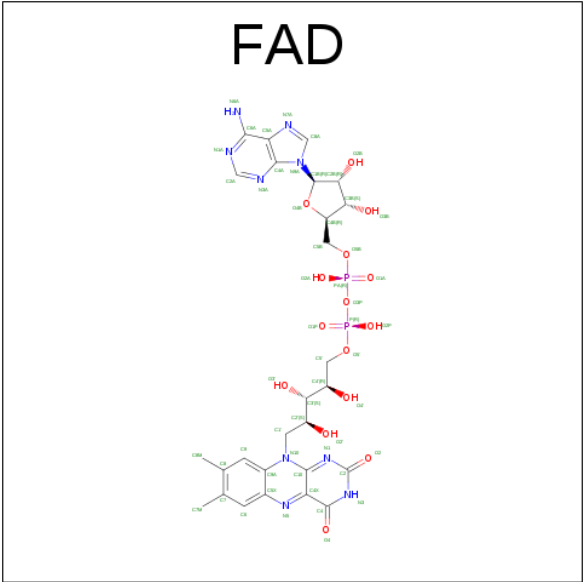
- Molecule 1 is a protein called Putative ferredoxin–NADP reductase.

Mol	Chain	Residues	Atoms					ZeroOcc	AltConf	Trace
1	A	262	Total	C	N	O	S	0	0	0
			2184	1421	357	397	9			
1	B	261	Total	C	N	O	S	0	0	0
			2171	1414	356	392	9			
1	C	266	Total	C	N	O	S	0	0	0
			2198	1429	362	398	9			
1	D	262	Total	C	N	O	S	0	0	0
			2170	1411	354	396	9			
1	E	254	Total	C	N	O	S	0	0	0
			2110	1375	343	383	9			
1	F	257	Total	C	N	O	S	0	0	0
			2116	1382	345	380	9			

- Molecule 2 is SODIUM ION (three-letter code: NA) (formula: Na).

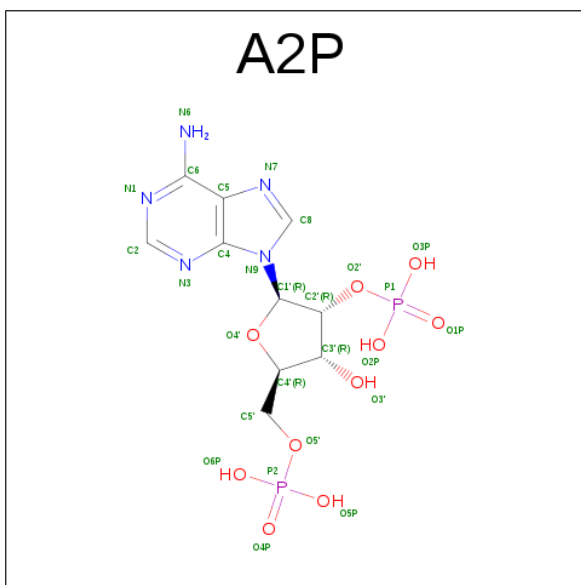
Mol	Chain	Residues	Atoms		ZeroOcc	AltConf
2	A	1	Total	Na	0	0
			1	1		

- Molecule 3 is FLAVIN-ADENINE DINUCLEOTIDE (three-letter code: FAD) (formula: C₂₇H₃₃N₉O₁₅P₂).



Mol	Chain	Residues	Atoms					ZeroOcc	AltConf
3	A	1	Total	C	N	O	P	0	0
			53	27	9	15	2		
3	B	1	Total	C	N	O	P	0	0
			53	27	9	15	2		
3	C	1	Total	C	N	O	P	0	0
			53	27	9	15	2		
3	D	1	Total	C	N	O	P	0	0
			53	27	9	15	2		
3	E	1	Total	C	N	O	P	0	0
			53	27	9	15	2		
3	F	1	Total	C	N	O	P	0	0
			53	27	9	15	2		

- Molecule 4 is ADENOSINE-2'-5'-DIPHOSPHATE (three-letter code: A2P) (formula: C₁₀H₁₅N₅O₁₀P₂).



Mol	Chain	Residues	Atoms					ZeroOcc	AltConf
4	A	1	Total	C	N	O	P	0	0
			27	10	5	10	2		
4	B	1	Total	C	N	O	P	0	0
			27	10	5	10	2		
4	C	1	Total	C	N	O	P	0	0
			27	10	5	10	2		
4	D	1	Total	C	N	O	P	0	0
			27	10	5	10	2		
4	E	1	Total	C	N	O	P	0	0
			27	10	5	10	2		
4	F	1	Total	C	N	O	P	0	0
			27	10	5	10	2		

- Molecule 5 is water.

Mol	Chain	Residues	Atoms		ZeroOcc	AltConf
5	A	49	Total	O	0	0
			49	49		
5	B	47	Total	O	0	0
			47	47		
5	C	46	Total	O	0	0
			46	46		
5	D	38	Total	O	0	0
			38	38		
5	E	24	Total	O	0	0
			24	24		
5	F	24	Total	O	0	0
			24	24		

- Molecule 1: Putative ferredoxin–NADP reductase



4 Data and refinement statistics

Property	Value	Source
Space group	P 31	Depositor
Cell constants a, b, c, α , β , γ	123.13Å 123.13Å 133.81Å 90.00° 90.00° 120.00°	Depositor
Resolution (Å)	30.00 – 2.70 61.56 – 2.70	Depositor EDS
% Data completeness (in resolution range)	98.5 (30.00-2.70) 98.5 (61.56-2.70)	Depositor EDS
R_{merge}	0.10	Depositor
R_{sym}	(Not available)	Depositor
$\langle I/\sigma(I) \rangle$ ¹	2.30 (at 2.69Å)	Xtriage
Refinement program	REFMAC 5.2	Depositor
R, R_{free}	0.260 , 0.321 0.256 , 0.313	Depositor DCC
R_{free} test set	3084 reflections (5.29%)	DCC
Wilson B-factor (Å ²)	38.6	Xtriage
Anisotropy	0.369	Xtriage
Bulk solvent k_{sol} (e/Å ³), B_{sol} (Å ²)	0.35 , -8.6	EDS
L-test for twinning ²	$\langle L \rangle = 0.49$, $\langle L^2 \rangle = 0.31$	Xtriage
Estimated twinning fraction	0.000 for -h,-k,l 0.467 for h,-h-k,-l 0.000 for -k,-h,-l	Xtriage
F_o, F_c correlation	0.92	EDS
Total number of atoms	13658	wwPDB-VP
Average B, all atoms (Å ²)	15.0	wwPDB-VP

Xtriage's analysis on translational NCS is as follows: *The analyses of the Patterson function reveals a significant off-origin peak that is 36.29 % of the origin peak, indicating pseudo translational symmetry. The chance of finding a peak of this or larger height randomly in a structure without pseudo translational symmetry is equal to 5.1126e-04. The detected translational NCS is most likely also responsible for the elevated intensity ratio.*

¹Intensities estimated from amplitudes.

²Theoretical values of $\langle |L| \rangle$, $\langle L^2 \rangle$ for acentric reflections are 0.5, 0.333 respectively for untwinned datasets, and 0.375, 0.2 for perfectly twinned datasets.

5 Model quality

5.1 Standard geometry

Bond lengths and bond angles in the following residue types are not validated in this section: A2P, NA, FAD

The Z score for a bond length (or angle) is the number of standard deviations the observed value is removed from the expected value. A bond length (or angle) with $|Z| > 5$ is considered an outlier worth inspection. RMSZ is the root-mean-square of all Z scores of the bond lengths (or angles).

Mol	Chain	Bond lengths		Bond angles	
		RMSZ	# $ Z > 5$	RMSZ	# $ Z > 5$
1	A	0.47	0/2237	0.62	0/3018
1	B	0.53	2/2224 (0.1%)	0.66	1/3002 (0.0%)
1	C	0.48	0/2252	0.64	0/3042
1	D	0.54	2/2223 (0.1%)	0.73	8/3003 (0.3%)
1	E	0.48	0/2163	0.60	0/2925
1	F	0.48	0/2168	0.64	1/2927 (0.0%)
All	All	0.50	4/13267 (0.0%)	0.65	10/17917 (0.1%)

All (4) bond length outliers are listed below:

Mol	Chain	Res	Type	Atoms	Z	Observed(Å)	Ideal(Å)
1	B	9	LEU	CG-CD1	-7.58	1.23	1.51
1	D	9	LEU	CG-CD2	-7.57	1.23	1.51
1	D	9	LEU	CG-CD1	-5.03	1.33	1.51
1	B	9	LEU	CG-CD2	-5.02	1.33	1.51

The worst 5 of 10 bond angle outliers are listed below:

Mol	Chain	Res	Type	Atoms	Z	Observed(°)	Ideal(°)
1	F	305	GLU	C-N-CA	-6.78	104.76	121.70
1	D	60	TYR	CB-CG-CD2	6.42	124.85	121.00
1	B	9	LEU	CB-CG-CD1	6.34	121.78	111.00
1	D	9	LEU	CB-CG-CD2	6.21	121.55	111.00
1	D	60	TYR	N-CA-C	5.78	126.60	111.00

There are no chirality outliers.

There are no planarity outliers.

5.2 Too-close contacts ⓘ

In the following table, the Non-H and H(model) columns list the number of non-hydrogen atoms and hydrogen atoms in the chain respectively. The H(added) column lists the number of hydrogen atoms added and optimized by MolProbity. The Clashes column lists the number of clashes within the asymmetric unit, whereas Symm-Clashes lists symmetry related clashes.

Mol	Chain	Non-H	H(model)	H(added)	Clashes	Symm-Clashes
1	A	2184	0	2139	15	0
1	B	2171	0	2125	13	0
1	C	2198	0	2136	19	0
1	D	2170	0	2101	20	0
1	E	2110	0	2045	11	0
1	F	2116	0	2051	10	0
2	A	1	0	0	0	0
3	A	53	0	31	1	0
3	B	53	0	31	1	0
3	C	53	0	31	3	0
3	D	53	0	31	0	0
3	E	53	0	31	0	0
3	F	53	0	31	0	0
4	A	27	0	11	3	0
4	B	27	0	11	2	0
4	C	27	0	11	3	0
4	D	27	0	11	2	0
4	E	27	0	11	1	0
4	F	27	0	11	0	0
5	A	49	0	0	0	0
5	B	47	0	0	0	0
5	C	46	0	0	0	0
5	D	38	0	0	1	0
5	E	24	0	0	0	0
5	F	24	0	0	0	0
All	All	13658	0	12849	90	0

The all-atom clashscore is defined as the number of clashes found per 1000 atoms (including hydrogen atoms). The all-atom clashscore for this structure is 3.

The worst 5 of 90 close contacts within the same asymmetric unit are listed below, sorted by their clash magnitude.

Atom-1	Atom-2	Interatomic distance (Å)	Clash overlap (Å)
1:D:60:TYR:CD2	1:D:60:TYR:O	1.89	1.24
1:D:61:ASN:O	1:D:61:ASN:CG	1.78	1.21

Continued on next page...

Continued from previous page...

Atom-1	Atom-2	Interatomic distance (Å)	Clash overlap (Å)
1:D:60:TYR:O	1:D:60:TYR:CG	1.98	1.08
1:D:61:ASN:O	1:D:61:ASN:OD1	1.71	1.08
1:F:306:LYS:CB	1:F:308:LYS:HE3	1.95	0.96

There are no symmetry-related clashes.

5.3 Torsion angles [i](#)

5.3.1 Protein backbone [i](#)

In the following table, the Percentiles column shows the percent Ramachandran outliers of the chain as a percentile score with respect to all X-ray entries followed by that with respect to entries of similar resolution.

The Analysed column shows the number of residues for which the backbone conformation was analysed, and the total number of residues.

Mol	Chain	Analysed	Favoured	Allowed	Outliers	Percentiles	
1	A	252/316 (80%)	242 (96%)	9 (4%)	1 (0%)	38	66
1	B	251/316 (79%)	238 (95%)	11 (4%)	2 (1%)	22	49
1	C	258/316 (82%)	244 (95%)	10 (4%)	4 (2%)	11	28
1	D	252/316 (80%)	242 (96%)	8 (3%)	2 (1%)	22	49
1	E	244/316 (77%)	232 (95%)	11 (4%)	1 (0%)	38	66
1	F	245/316 (78%)	225 (92%)	15 (6%)	5 (2%)	9	22
All	All	1502/1896 (79%)	1423 (95%)	64 (4%)	15 (1%)	18	43

5 of 15 Ramachandran outliers are listed below:

Mol	Chain	Res	Type
1	F	308	LYS
1	B	254	ALA
1	C	155	GLY
1	D	59	TYR
1	E	155	GLY

5.3.2 Protein sidechains ⓘ

In the following table, the Percentiles column shows the percent sidechain outliers of the chain as a percentile score with respect to all X-ray entries followed by that with respect to entries of similar resolution.

The Analysed column shows the number of residues for which the sidechain conformation was analysed, and the total number of residues.

Mol	Chain	Analysed	Rotameric	Outliers	Percentiles	
1	A	241/295 (82%)	231 (96%)	10 (4%)	35	66
1	B	238/295 (81%)	223 (94%)	15 (6%)	21	46
1	C	239/295 (81%)	231 (97%)	8 (3%)	43	73
1	D	237/295 (80%)	227 (96%)	10 (4%)	34	65
1	E	231/295 (78%)	221 (96%)	10 (4%)	33	64
1	F	228/295 (77%)	213 (93%)	15 (7%)	19	43
All	All	1414/1770 (80%)	1346 (95%)	68 (5%)	30	59

5 of 68 residues with a non-rotameric sidechain are listed below:

Mol	Chain	Res	Type
1	C	151	ILE
1	D	226	LEU
1	F	226	LEU
1	C	164	ASN
1	D	35	VAL

Some sidechains can be flipped to improve hydrogen bonding and reduce clashes. 5 of 23 such sidechains are listed below:

Mol	Chain	Res	Type
1	C	144	ASN
1	C	202	ASN
1	E	260	GLN
1	C	199	ASN
1	C	206	ASN

5.3.3 RNA ⓘ

There are no RNA molecules in this entry.

5.4 Non-standard residues in protein, DNA, RNA chains [i](#)

There are no non-standard protein/DNA/RNA residues in this entry.

5.5 Carbohydrates [i](#)

There are no carbohydrates in this entry.

5.6 Ligand geometry [i](#)

Of 13 ligands modelled in this entry, 1 is monoatomic - leaving 12 for Mogul analysis.

In the following table, the Counts columns list the number of bonds (or angles) for which Mogul statistics could be retrieved, the number of bonds (or angles) that are observed in the model and the number of bonds (or angles) that are defined in the chemical component dictionary. The Link column lists molecule types, if any, to which the group is linked. The Z score for a bond length (or angle) is the number of standard deviations the observed value is removed from the expected value. A bond length (or angle) with $|Z| > 2$ is considered an outlier worth inspection. RMSZ is the root-mean-square of all Z scores of the bond lengths (or angles).

Mol	Type	Chain	Res	Link	Bond lengths			Bond angles		
					Counts	RMSZ	# $ Z > 2$	Counts	RMSZ	# $ Z > 2$
3	FAD	A	415	-	51,58,58	1.41	6 (11%)	54,89,89	2.11	10 (18%)
4	A2P	A	416	2	25,29,29	0.95	1 (4%)	32,45,45	1.42	2 (6%)
3	FAD	B	415	-	51,58,58	1.38	7 (13%)	54,89,89	2.14	9 (16%)
4	A2P	B	416	-	25,29,29	0.91	1 (4%)	32,45,45	1.48	2 (6%)
3	FAD	C	415	-	51,58,58	1.40	6 (11%)	54,89,89	2.07	8 (14%)
4	A2P	C	416	-	25,29,29	0.93	1 (4%)	32,45,45	1.44	3 (9%)
3	FAD	D	415	-	51,58,58	1.36	7 (13%)	54,89,89	2.11	9 (16%)
4	A2P	D	416	-	25,29,29	0.93	1 (4%)	32,45,45	1.47	2 (6%)
3	FAD	E	415	-	51,58,58	1.35	6 (11%)	54,89,89	1.98	7 (12%)
4	A2P	E	416	-	25,29,29	1.05	1 (4%)	32,45,45	1.38	2 (6%)
3	FAD	F	415	-	51,58,58	1.38	7 (13%)	54,89,89	1.95	7 (12%)
4	A2P	F	416	-	25,29,29	1.03	1 (4%)	32,45,45	1.69	5 (15%)

In the following table, the Chirals column lists the number of chiral outliers, the number of chiral centers analysed, the number of these observed in the model and the number defined in the chemical component dictionary. Similar counts are reported in the Torsion and Rings columns. '-' means no outliers of that kind were identified.

Mol	Type	Chain	Res	Link	Chirals	Torsions	Rings
3	FAD	A	415	-	-	0/28/50/50	0/6/6/6
4	A2P	A	416	2	-	0/11/31/31	0/3/3/3
3	FAD	B	415	-	-	0/28/50/50	0/6/6/6
4	A2P	B	416	-	-	0/11/31/31	0/3/3/3
3	FAD	C	415	-	-	0/28/50/50	0/6/6/6
4	A2P	C	416	-	-	0/11/31/31	0/3/3/3
3	FAD	D	415	-	-	0/28/50/50	0/6/6/6
4	A2P	D	416	-	-	0/11/31/31	0/3/3/3
3	FAD	E	415	-	-	0/28/50/50	0/6/6/6
4	A2P	E	416	-	-	0/11/31/31	0/3/3/3
3	FAD	F	415	-	-	0/28/50/50	0/6/6/6
4	A2P	F	416	-	-	0/11/31/31	0/3/3/3

The worst 5 of 45 bond length outliers are listed below:

Mol	Chain	Res	Type	Atoms	Z	Observed(Å)	Ideal(Å)
3	B	415	FAD	C5X-N5	2.01	1.38	1.35
3	F	415	FAD	C5X-N5	2.21	1.38	1.35
3	A	415	FAD	C1'-N10	2.23	1.50	1.48
3	D	415	FAD	C5X-N5	2.30	1.38	1.35
3	D	415	FAD	C1'-N10	2.31	1.50	1.48

The worst 5 of 66 bond angle outliers are listed below:

Mol	Chain	Res	Type	Atoms	Z	Observed(°)	Ideal(°)
3	B	415	FAD	N3A-C2A-N1A	-10.48	119.73	128.86
3	E	415	FAD	N3A-C2A-N1A	-10.42	119.78	128.86
3	C	415	FAD	N3A-C2A-N1A	-10.37	119.83	128.86
3	F	415	FAD	N3A-C2A-N1A	-10.27	119.91	128.86
3	D	415	FAD	N3A-C2A-N1A	-10.22	119.95	128.86

There are no chirality outliers.

There are no torsion outliers.

There are no ring outliers.

8 monomers are involved in 16 short contacts:

Mol	Chain	Res	Type	Clashes	Symm-Clashes
3	A	415	FAD	1	0
4	A	416	A2P	3	0
3	B	415	FAD	1	0
4	B	416	A2P	2	0

Continued on next page...

Continued from previous page...

Mol	Chain	Res	Type	Clashes	Symm-Clashes
3	C	415	FAD	3	0
4	C	416	A2P	3	0
4	D	416	A2P	2	0
4	E	416	A2P	1	0

5.7 Other polymers [i](#)

There are no such residues in this entry.

5.8 Polymer linkage issues [i](#)

There are no chain breaks in this entry.

6 Fit of model and data [i](#)

6.1 Protein, DNA and RNA chains [i](#)

In the following table, the column labelled ‘#RSRZ> 2’ contains the number (and percentage) of RSRZ outliers, followed by percent RSRZ outliers for the chain as percentile scores relative to all X-ray entries and entries of similar resolution. The OWAB column contains the minimum, median, 95th percentile and maximum values of the occupancy-weighted average B-factor per residue. The column labelled ‘Q< 0.9’ lists the number of (and percentage) of residues with an average occupancy less than 0.9.

Mol	Chain	Analysed	<RSRZ>	#RSRZ>2	OWAB(Å ²)	Q<0.9
1	A	262/316 (82%)	-0.02	3 (1%) 80 81	2, 5, 30, 53	0
1	B	261/316 (82%)	0.01	3 (1%) 80 81	2, 6, 37, 63	0
1	C	266/316 (84%)	-0.04	0 100 100	2, 3, 35, 55	0
1	D	262/316 (82%)	0.07	3 (1%) 80 81	2, 5, 32, 57	0
1	E	254/316 (80%)	0.14	6 (2%) 59 60	3, 17, 50, 73	0
1	F	257/316 (81%)	0.53	10 (3%) 40 39	9, 30, 56, 74	0
All	All	1562/1896 (82%)	0.11	25 (1%) 72 73	2, 10, 46, 74	0

The worst 5 of 25 RSRZ outliers are listed below:

Mol	Chain	Res	Type	RSRZ
1	B	251	ASN	4.6
1	F	257	PHE	3.4
1	A	295	ASP	3.4
1	F	293	VAL	3.3
1	E	291	TYR	3.3

6.2 Non-standard residues in protein, DNA, RNA chains [i](#)

There are no non-standard protein/DNA/RNA residues in this entry.

6.3 Carbohydrates [i](#)

There are no carbohydrates in this entry.

6.4 Ligands [i](#)

In the following table, the Atoms column lists the number of modelled atoms in the group and the number defined in the chemical component dictionary. LLDF column lists the quality of electron density of the group with respect to its neighbouring residues in protein, DNA or RNA chains. The B-factors column lists the minimum, median, 95th percentile and maximum values of B factors of atoms in the group. The column labelled 'Q< 0.9' lists the number of atoms with occupancy less than 0.9.

Mol	Type	Chain	Res	Atoms	RSCC	RSR	LLDF	B-factors(Å ²)	Q<0.9
3	FAD	B	415	53/53	0.96	0.19	0.23	2,2,10,16	0
3	FAD	F	415	53/53	0.96	0.21	-0.04	2,24,38,44	0
3	FAD	D	415	53/53	0.96	0.18	-0.12	2,2,5,15	0
4	A2P	C	416	27/27	0.98	0.16	-0.16	2,2,6,21	0
3	FAD	E	415	53/53	0.97	0.19	-0.25	2,10,31,40	0
3	FAD	C	415	53/53	0.96	0.18	-0.30	2,2,4,19	0
4	A2P	D	416	27/27	0.97	0.16	-0.76	2,2,3,10	0
4	A2P	F	416	27/27	0.96	0.16	-0.77	2,22,41,48	0
4	A2P	B	416	27/27	0.97	0.15	-1.02	2,2,13,22	0
3	FAD	A	415	53/53	0.97	0.17	-1.03	2,2,7,21	0
4	A2P	A	416	27/27	0.98	0.15	-1.09	2,2,2,34	0
4	A2P	E	416	27/27	0.97	0.13	-1.28	2,6,18,22	0
2	NA	A	9001	1/1	0.70	0.19	-	2,2,2,2	0

6.5 Other polymers [i](#)

There are no such residues in this entry.