



Full wwPDB X-ray Structure Validation Report ⓘ

Feb 14, 2017 – 01:36 am GMT

PDB ID : 1ONQ
Title : Crystal Structure of CD1a in Complex with a Sulfatide
Authors : Zajonc, D.M.; Elsliger, M.A.; Teyton, L.; Wilson, I.A.
Deposited on : 2003-02-28
Resolution : 2.15 Å(reported)

This is a Full wwPDB X-ray Structure Validation Report for a publicly released PDB entry.

We welcome your comments at validation@mail.wwpdb.org

A user guide is available at

<http://wwpdb.org/validation/2016/XrayValidationReportHelp>

with specific help available everywhere you see the ⓘ symbol.

The following versions of software and data (see [references ⓘ](#)) were used in the production of this report:

MolProbity : 4.02b-467
Mogul : 1.7.2 (RC1), CSD as538be (2017)
Xtriage (Phenix) : 1.9-1692
EDS : trunk28620
Percentile statistics : 20161228.v01 (using entries in the PDB archive December 28th 2016)
Refmac : 5.8.0135
CCP4 : 6.5.0
Ideal geometry (proteins) : Engh & Huber (2001)
Ideal geometry (DNA, RNA) : Parkinson et al. (1996)
Validation Pipeline (wwPDB-VP) : recalc28949

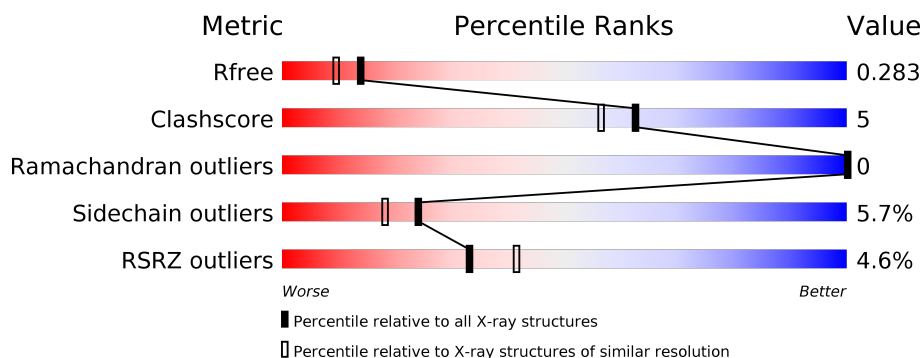
1 Overall quality at a glance

The following experimental techniques were used to determine the structure:

X-RAY DIFFRACTION

The reported resolution of this entry is 2.15 Å.

Percentile scores (ranging between 0-100) for global validation metrics of the entry are shown in the following graphic. The table shows the number of entries on which the scores are based.



Metric	Whole archive (#Entries)	Similar resolution (#Entries, resolution range(Å))
R_{free}	100719	1170 (2.16-2.16)
Clashscore	112137	1278 (2.16-2.16)
Ramachandran outliers	110173	1256 (2.16-2.16)
Sidechain outliers	110143	1255 (2.16-2.16)
RSRZ outliers	101464	1175 (2.16-2.16)

The table below summarises the geometric issues observed across the polymeric chains and their fit to the electron density. The red, orange, yellow and green segments on the lower bar indicate the fraction of residues that contain outliers for ≥ 3 , 2, 1 and 0 types of geometric quality criteria. A grey segment represents the fraction of residues that are not modelled. The numeric value for each fraction is indicated below the corresponding segment, with a dot representing fractions $\leq 5\%$. The upper red bar (where present) indicates the fraction of residues that have poor fit to the electron density. The numeric value is given above the bar.

Mol	Chain	Length	Quality of chain
1	A	283	 3% 81% 16% • •
1	C	283	 7% 85% 11% •
2	B	99	 81% 17% •
2	D	99	 4% 87% 13%

The following table lists non-polymeric compounds, carbohydrate monomers and non-standard residues in protein, DNA, RNA chains that are outliers for geometric or electron-density-fit crite-

ria:

Mol	Type	Chain	Res	Chirality	Geometry	Clashes	Electron density
3	NAG	C	501	-	-	-	X
4	FUC	A	531	-	-	-	X
5	NAG	A	511	X	-	-	-
7	SLF	A	601	-	-	-	X
7	SLF	C	602	X	-	-	X

2 Entry composition

There are 8 unique types of molecules in this entry. The entry contains 6791 atoms, of which 0 are hydrogens and 0 are deuteriums.

In the tables below, the ZeroOcc column contains the number of atoms modelled with zero occupancy, the AltConf column contains the number of residues with at least one atom in alternate conformation and the Trace column contains the number of residues modelled with at most 2 atoms.

- Molecule 1 is a protein called T-cell surface glycoprotein CD1a.

Mol	Chain	Residues	Atoms					ZeroOcc	AltConf	Trace
1	A	274	Total	C	N	O	S	0	0	0
			2228	1428	393	399	8			
1	C	273	Total	C	N	O	S	0	0	0
			2218	1422	390	398	8			

There are 12 discrepancies between the modelled and reference sequences:

Chain	Residue	Modelled	Actual	Comment	Reference
A	278	HIS	-	EXPRESSION TAG	UNP P06126
A	279	HIS	-	EXPRESSION TAG	UNP P06126
A	280	HIS	-	EXPRESSION TAG	UNP P06126
A	281	HIS	-	EXPRESSION TAG	UNP P06126
A	282	HIS	-	EXPRESSION TAG	UNP P06126
A	283	HIS	-	EXPRESSION TAG	UNP P06126
C	278	HIS	-	EXPRESSION TAG	UNP P06126
C	279	HIS	-	EXPRESSION TAG	UNP P06126
C	280	HIS	-	EXPRESSION TAG	UNP P06126
C	281	HIS	-	EXPRESSION TAG	UNP P06126
C	282	HIS	-	EXPRESSION TAG	UNP P06126
C	283	HIS	-	EXPRESSION TAG	UNP P06126

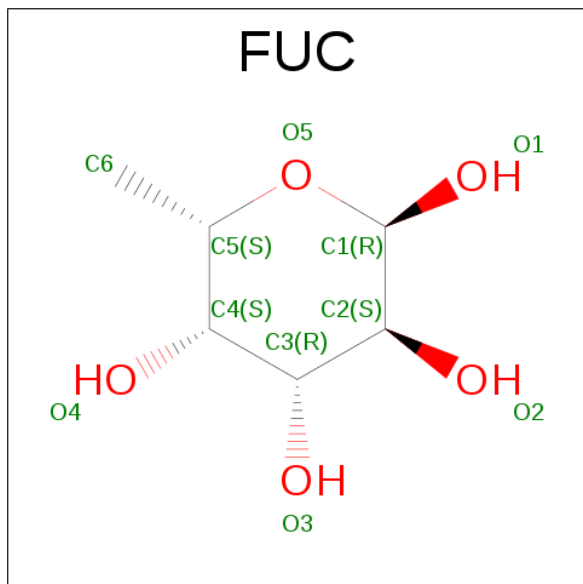
- Molecule 2 is a protein called Beta-2-microglobulin.

Mol	Chain	Residues	Atoms					ZeroOcc	AltConf	Trace
2	B	99	Total	C	N	O	S	0	0	0
			829	528	140	158	3			
2	D	99	Total	C	N	O	S	0	0	0
			829	528	140	158	3			

- Molecule 3 is a polymer of unknown type called SUGAR (2-MER).

Mol	Chain	Residues	Atoms				ZeroOcc	AltConf
3	A	2	Total	C	N	O	0	0
			28	16	2	10		
3	A	2	Total	C	N	O	0	0
			28	16	2	10		
3	C	2	Total	C	N	O	0	0
			28	16	2	10		

- Molecule 4 is SUGAR (FUCOSE) (three-letter code: FUC) (formula: $C_6H_{12}O_5$).

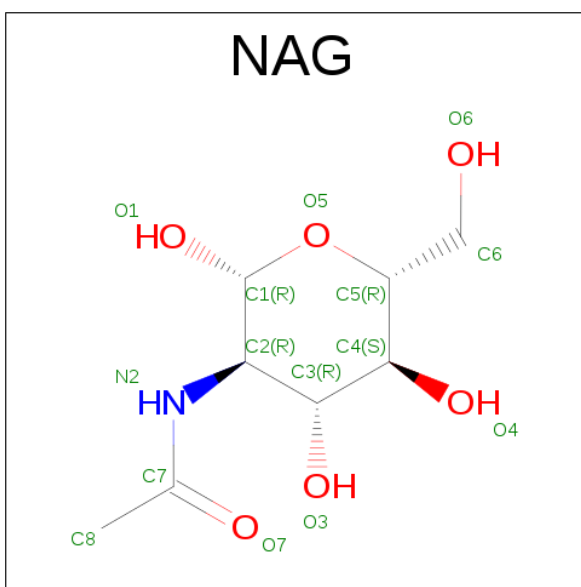


Mol	Chain	Residues	Atoms			ZeroOcc	AltConf
4	A	1	Total	C	O	0	0
			10	6	4		
4	C	1	Total	C	O	0	0
			10	6	4		

- Molecule 5 is a polymer of unknown type called SUGAR (2-MER).

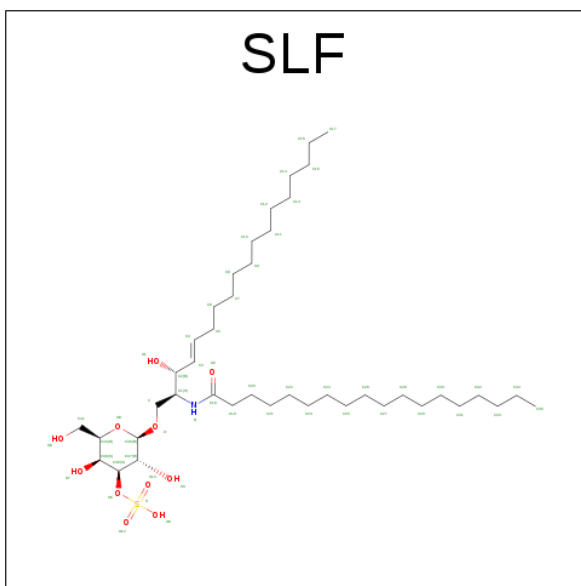
Mol	Chain	Residues	Atoms				ZeroOcc	AltConf
5	A	2	Total	C	N	O	0	0
			24	14	1	9		

- Molecule 6 is SUGAR (N-ACETYL-D-GLUCOSAMINE) (three-letter code: NAG) (formula: $C_8H_{15}NO_6$).



Mol	Chain	Residues	Atoms				ZeroOcc	AltConf
6	C	1	Total	C	N	O	0	0
			14	8	1	5		

- Molecule 7 is SULFATE-3-D-GALACTOSYL-BETA-1-1-N-STEAROYL-D-SPHINGOSIN E (three-letter code: SLF) (formula: $C_{42}H_{81}NO_{11}S$).



Mol	Chain	Residues	Atoms					ZeroOcc	AltConf
7	A	1	Total	C	N	O	S	0	0
			55	42	1	11	1		
7	C	1	Total	C	N	O		0	0
			40	36	1	3			

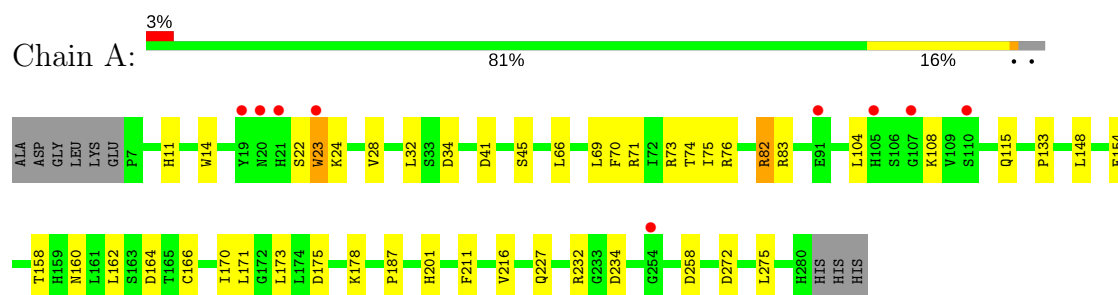
- Molecule 8 is water.

Mol	Chain	Residues	Atoms		ZeroOcc	AltConf
8	A	216	Total 216	O 216	0	0
8	B	82	Total 82	O 82	0	0
8	C	103	Total 103	O 103	0	0
8	D	49	Total 49	O 49	0	0

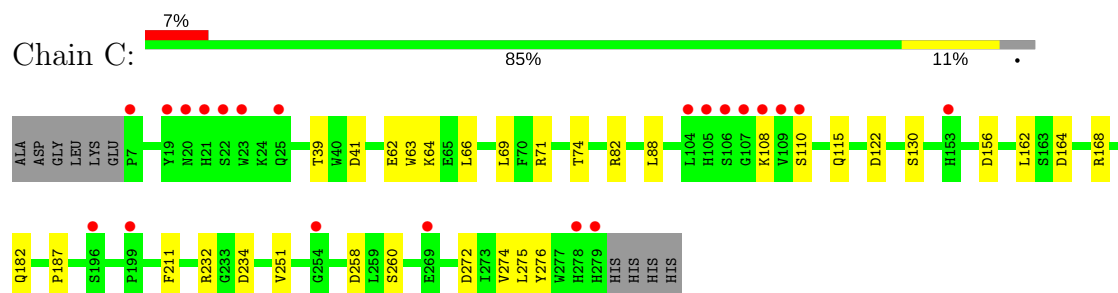
3 Residue-property plots [i](#)

These plots are drawn for all protein, RNA and DNA chains in the entry. The first graphic for a chain summarises the proportions of the various outlier classes displayed in the second graphic. The second graphic shows the sequence view annotated by issues in geometry and electron density. Residues are color-coded according to the number of geometric quality criteria for which they contain at least one outlier: green = 0, yellow = 1, orange = 2 and red = 3 or more. A red dot above a residue indicates a poor fit to the electron density ($RSRZ > 2$). Stretches of 2 or more consecutive residues without any outlier are shown as a green connector. Residues present in the sample, but not in the model, are shown in grey.

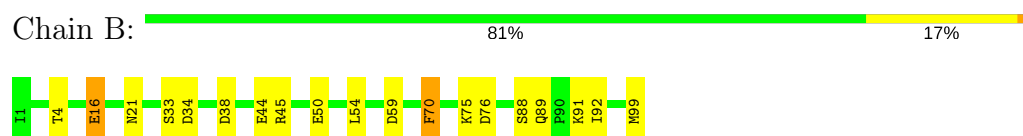
- Molecule 1: T-cell surface glycoprotein CD1a



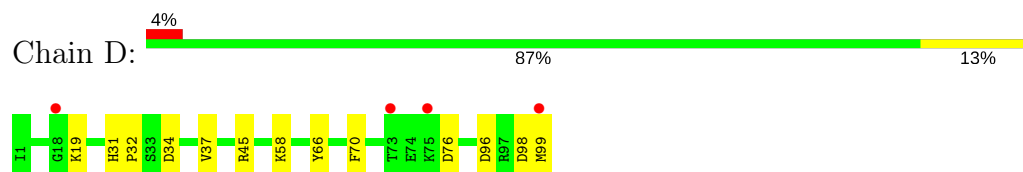
- Molecule 1: T-cell surface glycoprotein CD1a



- Molecule 2: Beta-2-microglobulin



- Molecule 2: Beta-2-microglobulin



4 Data and refinement statistics

Property	Value	Source
Space group	P 1 21 1	Depositor
Cell constants a, b, c, α , β , γ	55.41Å 42.71Å 204.22Å 90.00° 90.78° 90.00°	Depositor
Resolution (Å)	40.00 – 2.15 39.40 – 2.15	Depositor EDS
% Data completeness (in resolution range)	92.0 (40.00-2.15) 92.0 (39.40-2.15)	Depositor EDS
R_{merge}	(Not available)	Depositor
R_{sym}	0.07	Depositor
$\langle I/\sigma(I) \rangle$ ¹	2.50 (at 2.16Å)	Xtriage
Refinement program	REFMAC 5.1.24/TLS	Depositor
R, R_{free}	0.227 , 0.276 0.237 , 0.283	Depositor DCC
R_{free} test set	2236 reflections (4.82%)	DCC
Wilson B-factor (Å ²)	31.9	Xtriage
Anisotropy	0.361	Xtriage
Bulk solvent k_{sol} (e/Å ³), B_{sol} (Å ²)	0.33 , 50.6	EDS
L-test for twinning ²	$\langle L \rangle = 0.49$, $\langle L^2 \rangle = 0.32$	Xtriage
Estimated twinning fraction	0.029 for h,-k,-l	Xtriage
F_o, F_c correlation	0.94	EDS
Total number of atoms	6791	wwPDB-VP
Average B, all atoms (Å ²)	17.0	wwPDB-VP

Xtriage's analysis on translational NCS is as follows: *The largest off-origin peak in the Patterson function is 12.92% of the height of the origin peak. No significant pseudotranslation is detected.*

¹Intensities estimated from amplitudes.

²Theoretical values of $\langle |L| \rangle$, $\langle L^2 \rangle$ for acentric reflections are 0.5, 0.333 respectively for untwinned datasets, and 0.375, 0.2 for perfectly twinned datasets.

5 Model quality [i](#)

5.1 Standard geometry [i](#)

Bond lengths and bond angles in the following residue types are not validated in this section: SLF, NAG, FUC

The Z score for a bond length (or angle) is the number of standard deviations the observed value is removed from the expected value. A bond length (or angle) with $|Z| > 5$ is considered an outlier worth inspection. RMSZ is the root-mean-square of all Z scores of the bond lengths (or angles).

Mol	Chain	Bond lengths		Bond angles	
		RMSZ	$\# Z > 5$	RMSZ	$\# Z > 5$
1	A	0.62	0/2304	0.82	7/3136 (0.2%)
1	C	0.50	0/2293	0.74	7/3121 (0.2%)
2	B	0.68	1/852 (0.1%)	0.87	4/1152 (0.3%)
2	D	0.50	0/852	0.76	3/1152 (0.3%)
All	All	0.57	1/6301 (0.0%)	0.79	21/8561 (0.2%)

Chiral center outliers are detected by calculating the chiral volume of a chiral center and verifying if the center is modelled as a planar moiety or with the opposite hand. A planarity outlier is detected by checking planarity of atoms in a peptide group, atoms in a mainchain group or atoms of a sidechain that are expected to be planar.

Mol	Chain	#Chirality outliers	#Planarity outliers
5	A	1	0

All (1) bond length outliers are listed below:

Mol	Chain	Res	Type	Atoms	Z	Observed(Å)	Ideal(Å)
2	B	44	GLU	CD-OE2	5.25	1.31	1.25

All (21) bond angle outliers are listed below:

Mol	Chain	Res	Type	Atoms	Z	Observed(°)	Ideal(°)
1	A	34	ASP	CB-CG-OD2	6.90	124.51	118.30
2	B	38	ASP	CB-CG-OD2	6.26	123.93	118.30
1	C	41	ASP	CB-CG-OD2	6.22	123.90	118.30
1	A	164	ASP	CB-CG-OD2	6.11	123.80	118.30
1	C	156	ASP	CB-CG-OD2	6.07	123.76	118.30
1	C	234	ASP	CB-CG-OD2	6.01	123.71	118.30
2	B	34	ASP	CB-CG-OD2	5.99	123.69	118.30
1	A	258	ASP	CB-CG-OD2	5.99	123.69	118.30

Continued on next page...

Continued from previous page...

Mol	Chain	Res	Type	Atoms	Z	Observed(°)	Ideal(°)
1	A	272	ASP	CB-CG-OD2	5.94	123.65	118.30
1	A	175	ASP	CB-CG-OD2	5.91	123.62	118.30
1	C	272	ASP	CB-CG-OD2	5.83	123.54	118.30
1	A	41	ASP	CB-CG-OD2	5.73	123.45	118.30
1	A	234	ASP	CB-CG-OD2	5.58	123.32	118.30
1	C	164	ASP	CB-CG-OD2	5.34	123.10	118.30
2	B	59	ASP	CB-CG-OD2	5.28	123.06	118.30
2	D	34	ASP	CB-CG-OD2	5.25	123.02	118.30
2	B	76	ASP	CB-CG-OD2	5.20	122.98	118.30
2	D	76	ASP	CB-CG-OD2	5.11	122.89	118.30
2	D	98	ASP	CB-CG-OD2	5.04	122.84	118.30
1	C	122	ASP	CB-CG-OD2	5.03	122.83	118.30
1	C	258	ASP	CB-CG-OD2	5.00	122.81	118.30

All (1) chirality outliers are listed below:

Mol	Chain	Res	Type	Atom
5	A	511	NAG	C1

There are no planarity outliers.

5.2 Too-close contacts [i](#)

In the following table, the Non-H and H(model) columns list the number of non-hydrogen atoms and hydrogen atoms in the chain respectively. The H(added) column lists the number of hydrogen atoms added and optimized by MolProbity. The Clashes column lists the number of clashes within the asymmetric unit, whereas Symm-Clashes lists symmetry related clashes.

Mol	Chain	Non-H	H(model)	H(added)	Clashes	Symm-Clashes
1	A	2228	0	2103	30	0
1	C	2218	0	2097	12	0
2	B	829	0	794	5	1
2	D	829	0	794	4	0
3	A	56	0	50	4	0
3	C	28	0	25	4	0
4	A	10	0	10	2	0
4	C	10	0	10	1	0
5	A	24	0	22	1	0
6	C	14	0	13	0	0
7	A	55	0	81	16	0
7	C	40	0	69	3	0

Continued on next page...

Continued from previous page...

Mol	Chain	Non-H	H(model)	H(added)	Clashes	Symm-Clashes
8	A	216	0	0	10	1
8	B	82	0	0	1	0
8	C	103	0	0	0	0
8	D	49	0	0	1	0
All	All	6791	0	6068	62	1

The all-atom clashscore is defined as the number of clashes found per 1000 atoms (including hydrogen atoms). The all-atom clashscore for this structure is 5.

All (62) close contacts within the same asymmetric unit are listed below, sorted by their clash magnitude.

Atom-1	Atom-2	Interatomic distance (Å)	Clash overlap (Å)
7:A:601:SLF:H312	7:A:601:SLF:HO9	1.40	0.86
7:A:601:SLF:O9	7:A:601:SLF:H312	1.77	0.85
3:A:501:NAG:O6	4:A:531:FUC:C1	2.26	0.83
1:A:73:ARG:CD	7:A:601:SLF:O4	2.36	0.74
3:C:501:NAG:O6	4:C:532:FUC:C1	2.38	0.72
2:B:50:GLU:OE2	8:B:137:HOH:O	2.09	0.71
1:A:73:ARG:NE	7:A:601:SLF:O4	2.28	0.65
1:A:11:HIS:ND1	8:A:751:HOH:O	2.29	0.64
1:A:73:ARG:NH1	7:A:601:SLF:H1A	2.13	0.63
2:D:31:HIS:ND1	2:D:32:PRO:HA	2.14	0.62
1:A:216:VAL:O	1:A:232:ARG:NH2	2.34	0.60
1:A:23:TRP:CZ3	5:A:512:FUC:H61	2.38	0.59
7:A:601:SLF:H211	7:A:601:SLF:HN	1.68	0.59
1:C:168:ARG:HD2	3:C:501:NAG:H83	1.84	0.59
1:A:32:LEU:HD13	1:A:173:LEU:HD23	1.86	0.57
1:A:187:PRO:HB3	1:A:211:PHE:HB3	1.85	0.57
1:C:74:THR:HG22	7:C:602:SLF:H221	1.85	0.57
1:C:62:GLU:O	1:C:66:LEU:HD23	2.05	0.57
7:A:601:SLF:O4	7:A:601:SLF:H2A	2.06	0.55
7:A:601:SLF:N	7:A:601:SLF:H211	2.22	0.55
1:A:158:THR:HG23	7:A:601:SLF:O1	2.09	0.53
1:A:45:SER:OG	1:A:71:ARG:HD3	2.09	0.53
1:C:260:SER:HB3	1:C:276:TYR:CD2	2.44	0.53
1:C:187:PRO:HB3	1:C:211:PHE:HB3	1.91	0.52
2:B:91:LYS:C	2:B:92:ILE:HD12	2.32	0.50
1:A:73:ARG:CG	7:A:601:SLF:O4	2.60	0.50
1:A:133:PRO:HB2	8:A:817:HOH:O	2.12	0.50
1:A:11:HIS:CE1	8:A:751:HOH:O	2.64	0.50
1:C:274:VAL:HG12	1:C:276:TYR:CE1	2.47	0.49

Continued on next page...

Continued from previous page...

Atom-1	Atom-2	Interatomic distance (Å)	Clash overlap (Å)
1:C:168:ARG:HH11	3:C:501:NAG:H81	1.77	0.49
1:A:148:LEU:CD2	7:A:601:SLF:O9	2.60	0.49
1:A:70:PHE:O	1:A:74:THR:HG23	2.12	0.48
2:D:96:ASP:HB3	2:D:99:MET:HB2	1.94	0.48
1:A:73:ARG:HD3	7:A:601:SLF:O4	2.13	0.48
1:A:69:LEU:HD11	1:A:73:ARG:HD2	1.96	0.48
1:A:154:GLU:HG2	7:A:601:SLF:O7	2.14	0.48
3:A:501:NAG:HO6	4:A:531:FUC:C1	2.26	0.48
2:B:33:SER:HB2	2:B:54:LEU:HD21	1.96	0.48
1:C:74:THR:HG22	7:C:602:SLF:C22	2.43	0.48
1:C:274:VAL:HG12	1:C:276:TYR:CZ	2.49	0.47
1:A:14:TRP:HD1	1:A:28:VAL:HG22	1.81	0.46
1:A:160:ASN:HB2	8:A:761:HOH:O	2.15	0.46
1:A:70:PHE:CD1	7:A:601:SLF:H201	2.50	0.46
1:A:104:LEU:HD13	1:A:170:ILE:HD13	1.98	0.46
7:A:601:SLF:C	7:A:601:SLF:O4	2.64	0.46
1:C:168:ARG:HH11	3:C:501:NAG:C8	2.29	0.46
3:A:521:NAG:H83	8:A:715:HOH:O	2.16	0.45
1:A:115:GLN:NE2	8:A:687:HOH:O	2.49	0.45
1:A:171:LEU:HD12	3:A:502:NAG:H82	1.98	0.45
1:A:71:ARG:O	1:A:75:ILE:HD12	2.17	0.45
1:A:227:GLN:NE2	8:A:680:HOH:O	2.25	0.44
1:C:274:VAL:CG1	1:C:276:TYR:CZ	3.01	0.44
1:A:82:ARG:NH1	8:A:730:HOH:O	2.51	0.43
1:A:14:TRP:CD1	1:A:28:VAL:HG22	2.55	0.42
2:D:58:LYS:HE3	8:D:142:HOH:O	2.20	0.42
2:D:37:VAL:HB	2:D:66:TYR:CZ	2.55	0.41
2:B:21:ASN:HB3	2:B:70:PHE:CE1	2.55	0.41
7:A:601:SLF:C21	7:A:601:SLF:HN	2.34	0.40
2:B:92:ILE:HD12	2:B:92:ILE:N	2.37	0.40
1:A:201:HIS:CD2	8:A:749:HOH:O	2.74	0.40
1:A:201:HIS:HD2	8:A:749:HOH:O	2.04	0.40
1:C:63:TRP:CZ3	7:C:602:SLF:H131	2.57	0.40

All (1) symmetry-related close contacts are listed below. The label for Atom-2 includes the symmetry operator and encoded unit-cell translations to be applied.

Atom-1	Atom-2	Interatomic distance (Å)	Clash overlap (Å)
2:B:16:GLU:OE2	8:A:739:HOH:O[2_556]	2.15	0.05

5.3 Torsion angles [i](#)

5.3.1 Protein backbone [i](#)

In the following table, the Percentiles column shows the percent Ramachandran outliers of the chain as a percentile score with respect to all X-ray entries followed by that with respect to entries of similar resolution.

The Analysed column shows the number of residues for which the backbone conformation was analysed, and the total number of residues.

Mol	Chain	Analysed	Favoured	Allowed	Outliers	Percentiles	
1	A	272/283 (96%)	264 (97%)	8 (3%)	0	100	100
1	C	271/283 (96%)	264 (97%)	7 (3%)	0	100	100
2	B	97/99 (98%)	96 (99%)	1 (1%)	0	100	100
2	D	97/99 (98%)	96 (99%)	1 (1%)	0	100	100
All	All	737/764 (96%)	720 (98%)	17 (2%)	0	100	100

There are no Ramachandran outliers to report.

5.3.2 Protein sidechains [i](#)

In the following table, the Percentiles column shows the percent sidechain outliers of the chain as a percentile score with respect to all X-ray entries followed by that with respect to entries of similar resolution.

The Analysed column shows the number of residues for which the sidechain conformation was analysed, and the total number of residues.

Mol	Chain	Analysed	Rotameric	Outliers	Percentiles	
1	A	239/246 (97%)	227 (95%)	12 (5%)	28	23
1	C	238/246 (97%)	223 (94%)	15 (6%)	21	15
2	B	94/94 (100%)	86 (92%)	8 (8%)	12	7
2	D	94/94 (100%)	91 (97%)	3 (3%)	44	43
All	All	665/680 (98%)	627 (94%)	38 (6%)	24	18

All (38) residues with a non-rotameric sidechain are listed below:

Mol	Chain	Res	Type
1	A	22	SER
1	A	23	TRP

Continued on next page...

Continued from previous page...

Mol	Chain	Res	Type
1	A	24	LYS
1	A	66	LEU
1	A	76	ARG
1	A	82	ARG
1	A	83	ARG
1	A	108	LYS
1	A	162	LEU
1	A	166	CYS
1	A	178	LYS
1	A	275	LEU
2	B	4	THR
2	B	16	GLU
2	B	45	ARG
2	B	70	PHE
2	B	75	LYS
2	B	88	SER
2	B	89	GLN
2	B	99	MET
1	C	39	THR
1	C	64	LYS
1	C	69	LEU
1	C	71	ARG
1	C	82	ARG
1	C	88	LEU
1	C	108	LYS
1	C	110	SER
1	C	115	GLN
1	C	130	SER
1	C	162	LEU
1	C	182	GLN
1	C	232	ARG
1	C	251	VAL
1	C	275	LEU
2	D	19	LYS
2	D	45	ARG
2	D	70	PHE

Some sidechains can be flipped to improve hydrogen bonding and reduce clashes. All (12) such sidechains are listed below:

Mol	Chain	Res	Type
1	A	11	HIS
1	A	25	GLN

Continued on next page...

Continued from previous page...

Mol	Chain	Res	Type
1	A	184	GLN
1	A	228	GLN
1	C	115	GLN
1	C	143	HIS
1	C	150	GLN
1	C	180	HIS
1	C	184	GLN
1	C	193	HIS
1	C	225	GLN
1	C	227	GLN

5.3.3 RNA ⓘ

There are no RNA molecules in this entry.

5.4 Non-standard residues in protein, DNA, RNA chains ⓘ

There are no non-standard protein/DNA/RNA residues in this entry.

5.5 Carbohydrates ⓘ

8 carbohydrates are modelled in this entry.

In the following table, the Counts columns list the number of bonds (or angles) for which Mogul statistics could be retrieved, the number of bonds (or angles) that are observed in the model and the number of bonds (or angles) that are defined in the chemical component dictionary. The Link column lists molecule types, if any, to which the group is linked. The Z score for a bond length (or angle) is the number of standard deviations the observed value is removed from the expected value. A bond length (or angle) with $|Z| > 2$ is considered an outlier worth inspection. RMSZ is the root-mean-square of all Z scores of the bond lengths (or angles).

Mol	Type	Chain	Res	Link	Bond lengths			Bond angles		
					Counts	RMSZ	$\# Z > 2$	Counts	RMSZ	$\# Z > 2$
3	NAG	A	501	1,3	14,14,15	0.83	1 (7%)	15,19,21	1.55	2 (13%)
3	NAG	A	502	3	14,14,15	1.20	1 (7%)	15,19,21	1.63	4 (26%)
5	NAG	A	511	1,5	14,14,15	0.62	0	15,19,21	0.95	1 (6%)
5	FUC	A	512	5	9,10,11	0.67	0	13,14,16	0.71	0
3	NAG	A	521	1,3	14,14,15	0.60	0	15,19,21	1.44	4 (26%)
3	NAG	A	522	3	14,14,15	0.68	0	15,19,21	1.10	2 (13%)
3	NAG	C	501	1,3	14,14,15	0.84	1 (7%)	15,19,21	1.94	6 (40%)

Mol	Type	Chain	Res	Link	Bond lengths			Bond angles		
					Counts	RMSZ	# Z > 2	Counts	RMSZ	# Z > 2
3	NAG	C	502	3	14,14,15	0.40	0	15,19,21	1.79	4 (26%)

In the following table, the Chirals column lists the number of chiral outliers, the number of chiral centers analysed, the number of these observed in the model and the number defined in the chemical component dictionary. Similar counts are reported in the Torsion and Rings columns. '-' means no outliers of that kind were identified.

Mol	Type	Chain	Res	Link	Chirals	Torsions	Rings
3	NAG	A	501	1,3	-	0/6/23/26	0/1/1/1
3	NAG	A	502	3	-	0/6/23/26	0/1/1/1
5	NAG	A	511	1,5	1/1/5/7	0/6/23/26	0/1/1/1
5	FUC	A	512	5	-	0/0/17/20	0/1/1/1
3	NAG	A	521	1,3	-	0/6/23/26	0/1/1/1
3	NAG	A	522	3	-	0/6/23/26	0/1/1/1
3	NAG	C	501	1,3	-	0/6/23/26	0/1/1/1
3	NAG	C	502	3	-	0/6/23/26	0/1/1/1

All (3) bond length outliers are listed below:

Mol	Chain	Res	Type	Atoms	Z	Observed(Å)	Ideal(Å)
3	A	501	NAG	C1-C2	2.21	1.55	1.52
3	C	501	NAG	C1-C2	2.45	1.55	1.52
3	A	502	NAG	C1-C2	3.44	1.57	1.52

All (23) bond angle outliers are listed below:

Mol	Chain	Res	Type	Atoms	Z	Observed(°)	Ideal(°)
3	C	501	NAG	O7-C7-C8	-3.32	116.01	122.06
3	C	502	NAG	O5-C1-C2	-3.16	107.08	111.47
3	C	501	NAG	O5-C1-C2	-2.93	107.40	111.47
3	A	501	NAG	O5-C1-C2	-2.77	107.62	111.47
5	A	511	NAG	O5-C1-C2	-2.41	108.12	111.47
3	C	502	NAG	C6-C5-C4	-2.41	107.37	113.00
3	A	502	NAG	O7-C7-C8	-2.33	117.81	122.06
3	A	501	NAG	O3-C3-C4	-2.28	105.40	110.36
3	A	521	NAG	O5-C1-C2	-2.26	108.32	111.47
3	A	522	NAG	O7-C7-C8	-2.03	118.37	122.06
3	A	521	NAG	O7-C7-C8	-2.02	118.38	122.06
3	A	521	NAG	C2-N2-C7	2.13	126.05	122.94
3	A	502	NAG	O4-C4-C5	2.17	114.75	109.28
3	C	501	NAG	C8-C7-N2	2.21	120.10	116.11
3	A	502	NAG	O3-C3-C2	2.24	114.18	109.39

Continued on next page...

Continued from previous page...

Mol	Chain	Res	Type	Atoms	Z	Observed(°)	Ideal(°)
3	C	501	NAG	C1-C2-N2	2.34	114.48	110.49
3	C	502	NAG	C3-C4-C5	2.36	114.38	110.22
3	A	522	NAG	C1-O5-C5	2.41	115.49	112.17
3	A	502	NAG	C1-C2-N2	2.49	114.74	110.49
3	C	501	NAG	C1-O5-C5	2.73	115.93	112.17
3	C	501	NAG	C2-N2-C7	2.94	127.23	122.94
3	A	521	NAG	C4-C3-C2	3.09	115.54	111.02
3	C	502	NAG	C1-O5-C5	4.42	118.26	112.17

All (1) chirality outliers are listed below:

Mol	Chain	Res	Type	Atom
5	A	511	NAG	C1

There are no torsion outliers.

There are no ring outliers.

5 monomers are involved in 9 short contacts:

Mol	Chain	Res	Type	Clashes	Symm-Clashes
3	A	501	NAG	2	0
3	A	502	NAG	1	0
5	A	512	FUC	1	0
3	A	521	NAG	1	0
3	C	501	NAG	4	0

5.6 Ligand geometry [i](#)

5 ligands are modelled in this entry.

In the following table, the Counts columns list the number of bonds (or angles) for which Mogul statistics could be retrieved, the number of bonds (or angles) that are observed in the model and the number of bonds (or angles) that are defined in the chemical component dictionary. The Link column lists molecule types, if any, to which the group is linked. The Z score for a bond length (or angle) is the number of standard deviations the observed value is removed from the expected value. A bond length (or angle) with $|Z| > 2$ is considered an outlier worth inspection. RMSZ is the root-mean-square of all Z scores of the bond lengths (or angles).

Mol	Type	Chain	Res	Link	Bond lengths			Bond angles		
					Counts	RMSZ	$\# Z > 2$	Counts	RMSZ	$\# Z > 2$
4	FUC	A	531	-	9,10,11	0.55	0	13,14,16	1.30	2 (15%)
7	SLF	A	601	-	54,55,55	1.02	2 (3%)	57,66,66	1.68	12 (21%)

Mol	Type	Chain	Res	Link	Bond lengths			Bond angles		
					Counts	RMSZ	# Z > 2	Counts	RMSZ	# Z > 2
6	NAG	C	511	1	14,14,15	0.62	0	15,19,21	1.14	2 (13%)
4	FUC	C	532	-	9,10,11	0.63	0	13,14,16	1.14	2 (15%)
7	SLF	C	602	-	38,39,55	0.46	0	38,41,66	1.54	5 (13%)

In the following table, the Chirals column lists the number of chiral outliers, the number of chiral centers analysed, the number of these observed in the model and the number defined in the chemical component dictionary. Similar counts are reported in the Torsion and Rings columns. '-' means no outliers of that kind were identified.

Mol	Type	Chain	Res	Link	Chirals	Torsions	Rings
4	FUC	A	531	-	-	0/0/17/20	0/1/1/1
7	SLF	A	601	-	-	0/52/72/72	0/1/1/1
6	NAG	C	511	1	-	1/6/23/26	0/1/1/1
4	FUC	C	532	-	-	0/0/17/20	0/1/1/1
7	SLF	C	602	-	1/1/3/12	0/42/42/72	0/0/0/1

All (2) bond length outliers are listed below:

Mol	Chain	Res	Type	Atoms	Z	Observed(Å)	Ideal(Å)
7	A	601	SLF	O5-S	3.50	1.66	1.56
7	A	601	SLF	O-C36	4.52	1.48	1.40

All (23) bond angle outliers are listed below:

Mol	Chain	Res	Type	Atoms	Z	Observed(°)	Ideal(°)
7	A	601	SLF	C41-C40-C39	-4.97	101.38	113.00
7	C	602	SLF	O1-C2-C3	-4.03	100.48	110.79
7	C	602	SLF	C19-C18-N	-3.80	109.13	115.82
7	A	601	SLF	C37-C38-C39	-3.20	106.22	110.83
7	A	601	SLF	C20-C19-C18	-2.44	106.48	113.32
7	A	601	SLF	O8-C36-C37	-2.17	106.10	110.30
7	C	602	SLF	C5-C4-C3	-2.03	117.60	125.66
4	C	532	FUC	O5-C1-C2	2.09	114.06	110.79
7	A	601	SLF	C36-C37-C38	2.10	113.69	110.04
7	A	601	SLF	C38-O5-S	2.22	123.24	118.97
6	C	511	NAG	C2-N2-C7	2.32	126.33	122.94
7	A	601	SLF	C1-N-C18	2.45	128.04	123.64
4	C	532	FUC	C1-C2-C3	2.60	112.94	109.65
7	A	601	SLF	O8-C40-C39	2.69	114.62	109.66
6	C	511	NAG	C1-C2-N2	2.76	115.20	110.49
4	A	531	FUC	O5-C1-C2	2.77	115.12	110.79

Continued on next page...

Continued from previous page...

Mol	Chain	Res	Type	Atoms	Z	Observed(°)	Ideal(°)
4	A	531	FUC	C1-C2-C3	3.03	113.49	109.65
7	C	602	SLF	C1-N-C18	3.42	129.80	123.64
7	A	601	SLF	C-O-C36	3.66	121.27	113.76
7	A	601	SLF	O8-C40-C41	3.90	115.76	106.41
7	A	601	SLF	C-C1-N	4.18	115.54	109.76
7	A	601	SLF	O-C36-C37	4.81	116.09	108.23
7	C	602	SLF	C-C1-N	4.94	118.02	109.38

All (1) chirality outliers are listed below:

Mol	Chain	Res	Type	Atom
7	C	602	SLF	C1

All (1) torsion outliers are listed below:

Mol	Chain	Res	Type	Atoms
6	C	511	NAG	O7-C7-N2-C2

There are no ring outliers.

4 monomers are involved in 22 short contacts:

Mol	Chain	Res	Type	Clashes	Symm-Clashes
4	A	531	FUC	2	0
7	A	601	SLF	16	0
4	C	532	FUC	1	0
7	C	602	SLF	3	0

5.7 Other polymers [i](#)

There are no such residues in this entry.

5.8 Polymer linkage issues [i](#)

There are no chain breaks in this entry.

6 Fit of model and data

6.1 Protein, DNA and RNA chains

In the following table, the column labelled ‘#RSRZ> 2’ contains the number (and percentage) of RSRZ outliers, followed by percent RSRZ outliers for the chain as percentile scores relative to all X-ray entries and entries of similar resolution. The OWAB column contains the minimum, median, 95th percentile and maximum values of the occupancy-weighted average B-factor per residue. The column labelled ‘Q< 0.9’ lists the number of (and percentage) of residues with an average occupancy less than 0.9.

Mol	Chain	Analysed	<RSRZ>	#RSRZ>2	OWAB(Å ²)	Q<0.9
1	A	274/283 (96%)	0.29	9 (3%) 47 54	6, 14, 24, 29	0
1	C	273/283 (96%)	0.47	21 (7%) 14 18	7, 14, 21, 25	0
2	B	99/99 (100%)	-0.01	0 100 100	10, 15, 21, 27	0
2	D	99/99 (100%)	0.32	4 (4%) 39 46	9, 15, 19, 25	0
All	All	745/764 (97%)	0.32	34 (4%) 33 41	6, 15, 22, 29	0

All (34) RSRZ outliers are listed below:

Mol	Chain	Res	Type	RSRZ
1	C	109	VAL	7.2
1	A	23	TRP	5.4
1	C	21	HIS	5.2
1	C	23	TRP	4.9
1	C	107	GLY	4.6
1	C	105	HIS	4.5
2	D	99	MET	4.2
1	C	19	TYR	4.2
1	A	21	HIS	4.1
2	D	73	THR	4.0
1	C	279	HIS	4.0
1	C	20	ASN	3.8
1	C	108	LYS	3.7
2	D	75	LYS	3.6
1	A	20	ASN	3.6
1	A	110	SER	3.6
1	C	22	SER	3.6
1	C	106	SER	3.5
1	C	269	GLU	3.4
1	A	19	TYR	3.3
1	C	254	GLY	3.0

Continued on next page...

Continued from previous page...

Mol	Chain	Res	Type	RSRZ
1	C	110	SER	3.0
1	C	196	SER	3.0
2	D	18	GLY	2.9
1	A	105	HIS	2.7
1	A	91	GLU	2.6
1	A	107	GLY	2.5
1	A	254	GLY	2.4
1	C	278	HIS	2.4
1	C	104	LEU	2.3
1	C	7	PRO	2.2
1	C	199	PRO	2.2
1	C	153	HIS	2.2
1	C	25	GLN	2.0

6.2 Non-standard residues in protein, DNA, RNA chains [i](#)

There are no non-standard protein/DNA/RNA residues in this entry.

6.3 Carbohydrates [i](#)

In the following table, the Atoms column lists the number of modelled atoms in the group and the number defined in the chemical component dictionary. LLDF column lists the quality of electron density of the group with respect to its neighbouring residues in protein, DNA or RNA chains. The B-factors column lists the minimum, median, 95th percentile and maximum values of B factors of atoms in the group. The column labelled 'Q < 0.9' lists the number of atoms with occupancy less than 0.9.

Mol	Type	Chain	Res	Atoms	RSCC	RSR	LLDF	B-factors(Å ²)	Q<0.9
3	NAG	C	501	14/15	0.82	0.22	3.01	12,14,15,17	0
3	NAG	A	522	14/15	0.78	0.15	-0.29	14,16,19,20	0
3	NAG	A	501	14/15	0.94	0.10	-0.60	8,12,15,16	0
5	FUC	A	512	10/11	0.84	0.24	-	27,27,28,29	0
3	NAG	A	521	14/15	0.89	0.18	-	13,14,16,18	0
5	NAG	A	511	14/15	0.70	0.45	-	29,30,32,33	0
3	NAG	C	502	14/15	0.88	0.24	-	16,17,17,18	0
3	NAG	A	502	14/15	0.90	0.16	-	12,15,18,20	0

6.4 Ligands [i](#)

In the following table, the Atoms column lists the number of modelled atoms in the group and the number defined in the chemical component dictionary. LLDF column lists the quality of electron

density of the group with respect to its neighbouring residues in protein, DNA or RNA chains. The B-factors column lists the minimum, median, 95th percentile and maximum values of B factors of atoms in the group. The column labelled 'Q < 0.9' lists the number of atoms with occupancy less than 0.9.

Mol	Type	Chain	Res	Atoms	RSCC	RSR	LLDF	B-factors(Å ²)	Q<0.9
7	SLF	C	602	40/55	0.64	0.26	5.06	18,25,30,32	0
4	FUC	A	531	10/11	0.86	0.27	4.10	21,22,23,23	0
7	SLF	A	601	55/55	0.59	0.27	3.78	18,32,44,46	0
6	NAG	C	511	14/15	0.76	0.27	-	16,17,18,18	0
4	FUC	C	532	10/11	0.83	0.47	-	17,18,19,19	0

6.5 Other polymers [i](#)

There are no such residues in this entry.