



Full wwPDB X-ray Structure Validation Report ⓘ

Feb 12, 2017 – 09:18 pm GMT

PDB ID : 1OSH
Title : A Chemical, Genetic, and Structural Analysis of the nuclear bile acid receptor FXR
Authors : Downes, M.; Verdecia, M.A.; Roecker, A.J.; Hughes, R.; Hogenesch, J.B.; Kast-Woelbern, H.R.; Bowman, M.E.; Ferrer, J.-L.; Anisfeld, A.M.; Edwards, P.A.; Rosenfeld, J.M.; Alvarez, J.G.A.; Noel, J.P.; Nicolaou, K.C.; Evans, R.M.
Deposited on : 2003-03-19
Resolution : 1.80 Å(reported)

This is a Full wwPDB X-ray Structure Validation Report for a publicly released PDB entry.

We welcome your comments at validation@mail.wwpdb.org
A user guide is available at
<http://wwpdb.org/validation/2016/XrayValidationReportHelp>
with specific help available everywhere you see the ⓘ symbol.

The following versions of software and data (see [references ⓘ](#)) were used in the production of this report:

MolProbity : 4.02b-467
Mogul : 1.7.2 (RC1), CSD as538be (2017)
Xtriage (Phenix) : **NOT EXECUTED**
EDS : **NOT EXECUTED**
Percentile statistics : 20161228.v01 (using entries in the PDB archive December 28th 2016)
Ideal geometry (proteins) : Engh & Huber (2001)
Ideal geometry (DNA, RNA) : Parkinson et al. (1996)
Validation Pipeline (wwPDB-VP) : recalc28949

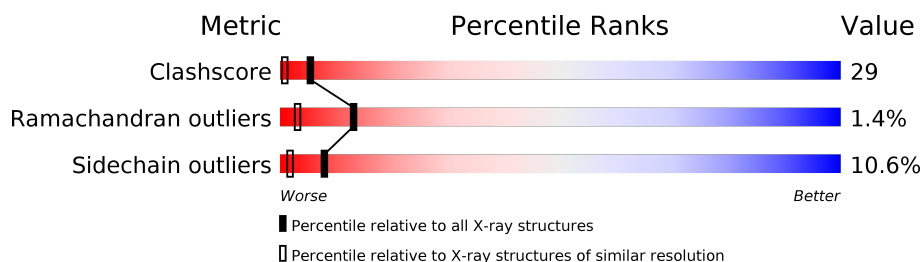
1 Overall quality at a glance

The following experimental techniques were used to determine the structure:

X-RAY DIFFRACTION

The reported resolution of this entry is 1.80 Å.

Percentile scores (ranging between 0-100) for global validation metrics of the entry are shown in the following graphic. The table shows the number of entries on which the scores are based.



Metric	Whole archive (#Entries)	Similar resolution (#Entries, resolution range(Å))
Clashscore	112137	5742 (1.80-1.80)
Ramachandran outliers	110173	5676 (1.80-1.80)
Sidechain outliers	110143	5675 (1.80-1.80)

The table below summarises the geometric issues observed across the polymeric chains and their fit to the electron density. The red, orange, yellow and green segments on the lower bar indicate the fraction of residues that contain outliers for ≥ 3 , 2, 1 and 0 types of geometric quality criteria. A grey segment represents the fraction of residues that are not modelled. The numeric value for each fraction is indicated below the corresponding segment, with a dot representing fractions $\leq 5\%$. The upper red bar (where present) indicates the fraction of residues that have poor fit to the electron density. The numeric value is given above the bar.

Note EDS was not executed.

Mol	Chain	Length	Quality of chain
1	A	232	

The following table lists non-polymeric compounds, carbohydrate monomers and non-standard residues in protein, DNA, RNA chains that are outliers for geometric or electron-density-fit criteria:

Mol	Type	Chain	Res	Chirality	Geometry	Clashes	Electron density
2	FEX	A	1	-	X	-	-

2 Entry composition [i](#)

There are 3 unique types of molecules in this entry. The entry contains 1984 atoms, of which 0 are hydrogens and 0 are deuteriums.

In the tables below, the ZeroOcc column contains the number of atoms modelled with zero occupancy, the AltConf column contains the number of residues with at least one atom in alternate conformation and the Trace column contains the number of residues modelled with at most 2 atoms.

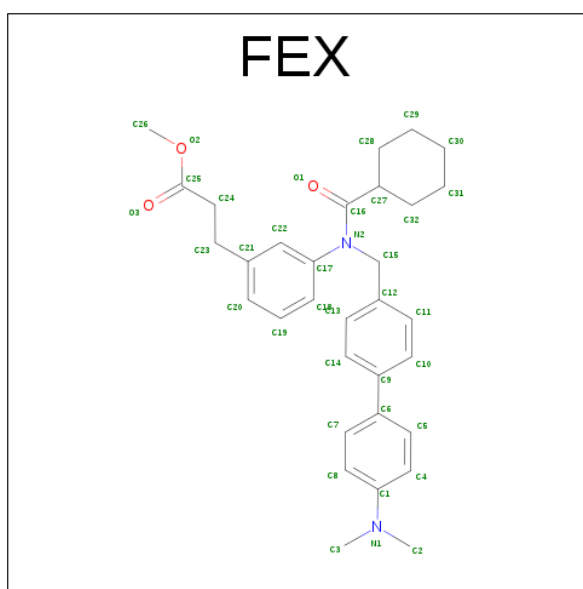
- Molecule 1 is a protein called Bile acid receptor.

Mol	Chain	Residues	Atoms					ZeroOcc	AltConf	Trace
			Total	C	N	O	S			
1	A	216	1768	1130	300	327	11	0	0	0

There are 3 discrepancies between the modelled and reference sequences:

Chain	Residue	Modelled	Actual	Comment	Reference
A	245	SER	-	CLONING ARTIFACT	UNP Q96RI1
A	246	HIS	-	CLONING ARTIFACT	UNP Q96RI1
A	247	GLY	-	CLONING ARTIFACT	UNP Q96RI1

- Molecule 2 is METHYL 3-{3-[(CYCLOHEXYLCARBONYL){4'-(DIMETHYLAMINO)BIPHENYL-4-YL]METHYL}AMINO]PHENYL}ACRYLATE (three-letter code: FEX) (formula: C₃₂H₃₈N₂O₃).



Mol	Chain	Residues	Atoms				ZeroOcc	AltConf
			Total	C	N	O		
2	A	1	37	32	2	3	0	0

- Molecule 3 is water.

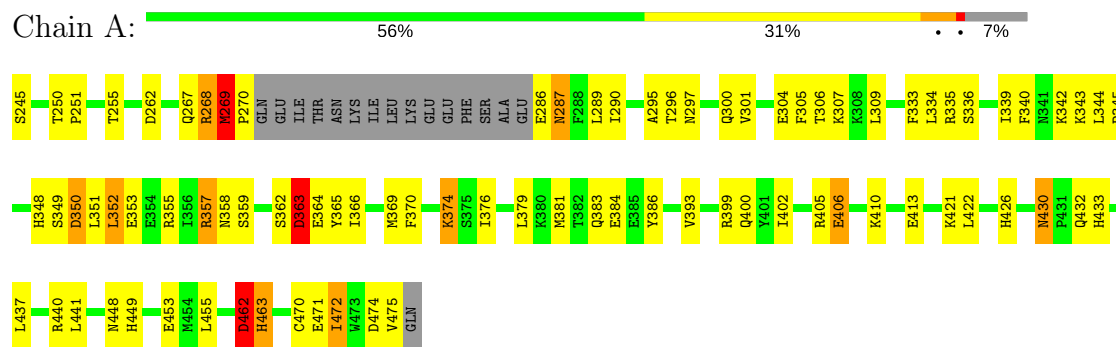
Mol	Chain	Residues	Atoms		ZeroOcc	AltConf
3	A	179	Total 179	O 179	0	0

3 Residue-property plots [i](#)

These plots are drawn for all protein, RNA and DNA chains in the entry. The first graphic for a chain summarises the proportions of the various outlier classes displayed in the second graphic. The second graphic shows the sequence view annotated by issues in geometry and electron density. Residues are color-coded according to the number of geometric quality criteria for which they contain at least one outlier: green = 0, yellow = 1, orange = 2 and red = 3 or more. A red dot above a residue indicates a poor fit to the electron density ($RSRZ > 2$). Stretches of 2 or more consecutive residues without any outlier are shown as a green connector. Residues present in the sample, but not in the model, are shown in grey.

Note EDS was not executed.

- Molecule 1: Bile acid receptor



4 Data and refinement statistics

Xtriage (Phenix) and EDS were not executed - this section is therefore incomplete.

Property	Value	Source
Space group	P 21 21 21	Depositor
Cell constants a, b, c, α , β , γ	36.66Å 56.78Å 117.65Å 90.00° 90.00° 90.00°	Depositor
Resolution (Å)	58.00 – 1.80	Depositor
% Data completeness (in resolution range)	95.8 (58.00-1.80)	Depositor
R_{merge}	(Not available)	Depositor
R_{sym}	(Not available)	Depositor
Refinement program	CNS 1.1	Depositor
R, R_{free}	0.215 , 0.234	Depositor
Estimated twinning fraction	No twinning to report.	Xtriage
Total number of atoms	1984	wwPDB-VP
Average B, all atoms (Å ²)	27.0	wwPDB-VP

5 Model quality [i](#)

5.1 Standard geometry [i](#)

Bond lengths and bond angles in the following residue types are not validated in this section: FEX

The Z score for a bond length (or angle) is the number of standard deviations the observed value is removed from the expected value. A bond length (or angle) with $|Z| > 5$ is considered an outlier worth inspection. RMSZ is the root-mean-square of all Z scores of the bond lengths (or angles).

Mol	Chain	Bond lengths		Bond angles	
		RMSZ	$\# Z > 5$	RMSZ	$\# Z > 5$
1	A	1.02	0/1807	1.01	4/2441 (0.2%)

There are no bond length outliers.

All (4) bond angle outliers are listed below:

Mol	Chain	Res	Type	Atoms	Z	Observed(°)	Ideal(°)
1	A	269	MET	C-N-CD	-11.12	96.14	120.60
1	A	462	ASP	N-CA-C	7.91	132.35	111.00
1	A	462	ASP	CA-C-N	-6.46	103.00	117.20
1	A	463	HIS	N-CA-C	-5.61	95.84	111.00

There are no chirality outliers.

There are no planarity outliers.

5.2 Too-close contacts [i](#)

In the following table, the Non-H and H(model) columns list the number of non-hydrogen atoms and hydrogen atoms in the chain respectively. The H(added) column lists the number of hydrogen atoms added and optimized by MolProbity. The Clashes column lists the number of clashes within the asymmetric unit, whereas Symm-Clashes lists symmetry related clashes.

Mol	Chain	Non-H	H(model)	H(added)	Clashes	Symm-Clashes
1	A	1768	0	1759	103	1
2	A	37	0	36	4	0
3	A	179	0	0	50	1
All	All	1984	0	1795	104	1

The all-atom clashscore is defined as the number of clashes found per 1000 atoms (including hydrogen atoms). The all-atom clashscore for this structure is 29.

All (104) close contacts within the same asymmetric unit are listed below, sorted by their clash magnitude.

Atom-1	Atom-2	Interatomic distance (Å)	Clash overlap (Å)
1:A:437:LEU:HG	3:A:1144:HOH:O	1.38	1.20
1:A:399:ARG:NH1	3:A:1009:HOH:O	1.76	1.17
1:A:287:ASN:HD21	1:A:355:ARG:NH2	1.57	1.00
1:A:405:ARG:NH1	3:A:1003:HOH:O	1.96	0.97
1:A:287:ASN:ND2	1:A:355:ARG:NH2	2.13	0.95
1:A:287:ASN:ND2	1:A:355:ARG:HH22	1.69	0.90
1:A:339:ILE:HD13	3:A:1142:HOH:O	1.73	0.87
1:A:364:GLU:N	3:A:1007:HOH:O	2.09	0.83
1:A:383:GLN:HA	3:A:1157:HOH:O	1.82	0.80
1:A:381:MET:SD	1:A:437:LEU:HD11	2.21	0.79
1:A:402:ILE:HB	3:A:1003:HOH:O	1.83	0.79
1:A:353:GLU:O	1:A:357:ARG:HG2	1.83	0.78
1:A:344:LEU:HD12	3:A:1074:HOH:O	1.83	0.76
1:A:430:ASN:HB2	3:A:1044:HOH:O	1.86	0.76
1:A:352:LEU:HB3	3:A:1084:HOH:O	1.85	0.75
1:A:334:LEU:HG	3:A:1127:HOH:O	1.85	0.75
1:A:268:ARG:O	1:A:335:ARG:NH2	2.22	0.71
1:A:399:ARG:O	3:A:1003:HOH:O	2.10	0.69
1:A:269:MET:HG3	1:A:270:PRO:CD	2.22	0.69
1:A:333:PHE:HA	3:A:1086:HOH:O	1.93	0.68
1:A:472:ILE:HD13	1:A:472:ILE:N	2.07	0.68
1:A:374:LYS:HA	1:A:374:LYS:CE	2.23	0.68
1:A:448:ASN:HB2	3:A:1095:HOH:O	1.93	0.67
1:A:350:ASP:HB2	3:A:1092:HOH:O	1.94	0.67
1:A:363:ASP:C	3:A:1007:HOH:O	2.30	0.67
1:A:449:HIS:CD2	3:A:1095:HOH:O	2.48	0.66
1:A:269:MET:HA	3:A:1077:HOH:O	1.96	0.66
1:A:336:SER:HB2	3:A:1086:HOH:O	1.96	0.65
1:A:405:ARG:CZ	3:A:1003:HOH:O	2.39	0.65
1:A:343:LYS:HG2	3:A:1116:HOH:O	1.97	0.64
1:A:340:PHE:HE1	2:A:1:FEX:HC2	1.63	0.63
1:A:345:PRO:HD2	1:A:348:HIS:HD2	1.64	0.63
1:A:349:SER:HB2	3:A:1130:HOH:O	1.97	0.63
1:A:406:GLU:OE1	1:A:410:LYS:HE3	2.00	0.62
1:A:250:THR:HG23	3:A:1170:HOH:O	2.01	0.61
1:A:363:ASP:CA	3:A:1007:HOH:O	2.48	0.61
1:A:363:ASP:O	1:A:365:TYR:N	2.34	0.60
1:A:406:GLU:OE1	1:A:410:LYS:CE	2.49	0.60
1:A:362:SER:C	1:A:363:ASP:O	2.36	0.59
1:A:376:ILE:HD13	3:A:1127:HOH:O	2.03	0.58

Continued on next page...

Continued from previous page...

Atom-1	Atom-2	Interatomic distance (Å)	Clash overlap (Å)
1:A:297:ASN:HB2	3:A:1162:HOH:O	2.03	0.58
1:A:269:MET:CA	3:A:1077:HOH:O	2.50	0.57
1:A:255:THR:HG21	3:A:1098:HOH:O	2.05	0.57
1:A:287:ASN:OD1	1:A:359:SER:HA	2.04	0.56
1:A:286:GLU:N	3:A:1108:HOH:O	2.39	0.56
1:A:345:PRO:HD2	1:A:348:HIS:CD2	2.41	0.55
1:A:353:GLU:HG2	1:A:357:ARG:HH11	1.72	0.54
1:A:296:THR:O	1:A:300:GLN:HG2	2.07	0.54
1:A:384:GLU:OE1	1:A:426:HIS:HE1	1.91	0.53
1:A:305:PHE:O	1:A:309:LEU:CD1	2.56	0.53
1:A:363:ASP:HA	3:A:1007:HOH:O	2.09	0.52
1:A:399:ARG:HD3	3:A:1137:HOH:O	2.10	0.51
1:A:374:LYS:HE3	1:A:374:LYS:HA	1.93	0.50
2:A:1:FEX:HC4	3:A:1142:HOH:O	2.12	0.50
1:A:355:ARG:NH1	1:A:355:ARG:O	2.43	0.50
1:A:353:GLU:HG2	1:A:357:ARG:NH1	2.28	0.49
1:A:381:MET:SD	1:A:437:LEU:CD1	2.98	0.49
1:A:335:ARG:NH1	3:A:1058:HOH:O	2.46	0.49
1:A:406:GLU:CG	3:A:1006:HOH:O	2.60	0.49
1:A:430:ASN:ND2	1:A:432:GLN:HG2	2.27	0.49
1:A:334:LEU:CD2	3:A:1127:HOH:O	2.59	0.48
1:A:344:LEU:CD1	3:A:1074:HOH:O	2.50	0.48
1:A:471:GLU:HG3	1:A:472:ILE:HD13	1.95	0.48
1:A:309:LEU:N	1:A:309:LEU:CD1	2.77	0.48
1:A:334:LEU:CG	3:A:1127:HOH:O	2.53	0.48
1:A:353:GLU:CG	1:A:357:ARG:NH1	2.76	0.48
1:A:269:MET:HG2	3:A:1142:HOH:O	2.14	0.47
1:A:269:MET:HG3	1:A:270:PRO:HD3	1.96	0.47
1:A:286:GLU:O	1:A:290:ILE:HG12	2.13	0.47
1:A:304:GLU:HA	1:A:307:LYS:HD3	1.95	0.47
1:A:262:ASP:OD1	3:A:1020:HOH:O	2.20	0.47
1:A:362:SER:OG	1:A:363:ASP:O	2.30	0.47
1:A:349:SER:HA	3:A:1074:HOH:O	2.15	0.47
1:A:269:MET:HG3	1:A:270:PRO:HD2	1.94	0.46
1:A:437:LEU:HA	1:A:437:LEU:HD13	1.77	0.46
1:A:366:ILE:O	1:A:369:MET:HB3	2.16	0.46
1:A:462:ASP:OD1	1:A:463:HIS:O	2.34	0.45
1:A:421:LYS:NZ	3:A:1170:HOH:O	2.48	0.45
1:A:370:PHE:HZ	3:A:1084:HOH:O	2.00	0.44
1:A:297:ASN:ND2	3:A:1097:HOH:O	2.50	0.44
1:A:268:ARG:HB3	3:A:1115:HOH:O	2.18	0.44

Continued on next page...

Continued from previous page...

Atom-1	Atom-2	Interatomic distance (Å)	Clash overlap (Å)
1:A:309:LEU:HD12	1:A:309:LEU:N	2.32	0.44
1:A:306:THR:HA	1:A:309:LEU:HD13	2.00	0.44
1:A:342:LYS:HE2	3:A:1157:HOH:O	2.17	0.43
1:A:352:LEU:HA	1:A:352:LEU:HD12	1.84	0.43
1:A:470:CYS:HA	1:A:475:VAL:HG22	2.01	0.43
1:A:295:ALA:HB2	2:A:1:FEX:H7	2.00	0.43
1:A:340:PHE:CE1	2:A:1:FEX:HC2	2.49	0.42
1:A:301:VAL:HG13	3:A:1097:HOH:O	2.19	0.42
1:A:406:GLU:HG3	3:A:1006:HOH:O	2.17	0.42
1:A:433:HIS:CE1	1:A:437:LEU:HD21	2.55	0.42
1:A:422:LEU:HA	1:A:422:LEU:HD23	1.90	0.42
1:A:393:VAL:CG1	3:A:1173:HOH:O	2.68	0.41
1:A:305:PHE:O	1:A:309:LEU:HD13	2.21	0.41
1:A:267:GLN:NE2	1:A:335:ARG:HE	2.18	0.41
1:A:363:ASP:C	1:A:365:TYR:N	2.74	0.41
1:A:462:ASP:CG	1:A:463:HIS:O	2.59	0.41
1:A:406:GLU:OE1	1:A:410:LYS:CD	2.69	0.41
1:A:364:GLU:OE1	1:A:453:GLU:OE1	2.38	0.41
1:A:386:TYR:HD2	3:A:1157:HOH:O	2.04	0.41
1:A:287:ASN:HA	1:A:287:ASN:HD22	1.45	0.40
1:A:379:LEU:HD13	1:A:437:LEU:HD22	2.03	0.40
1:A:269:MET:CG	3:A:1142:HOH:O	2.68	0.40
1:A:363:ASP:C	1:A:365:TYR:H	2.22	0.40

All (1) symmetry-related close contacts are listed below. The label for Atom-2 includes the symmetry operator and encoded unit-cell translations to be applied.

Atom-1	Atom-2	Interatomic distance (Å)	Clash overlap (Å)
1:A:245:SER:OG	3:A:1131:HOH:O[3_555]	2.05	0.15

5.3 Torsion angles

5.3.1 Protein backbone

In the following table, the Percentiles column shows the percent Ramachandran outliers of the chain as a percentile score with respect to all X-ray entries followed by that with respect to entries of similar resolution.

The Analysed column shows the number of residues for which the backbone conformation was analysed, and the total number of residues.

Mol	Chain	Analysed	Favoured	Allowed	Outliers	Percentiles
1	A	212/232 (91%)	207 (98%)	2 (1%)	3 (1%)	13 3

All (3) Ramachandran outliers are listed below:

Mol	Chain	Res	Type
1	A	363	ASP
1	A	462	ASP
1	A	269	MET

5.3.2 Protein sidechains [i](#)

In the following table, the Percentiles column shows the percent sidechain outliers of the chain as a percentile score with respect to all X-ray entries followed by that with respect to entries of similar resolution.

The Analysed column shows the number of residues for which the sidechain conformation was analysed, and the total number of residues.

Mol	Chain	Analysed	Rotameric	Outliers	Percentiles
1	A	199/214 (93%)	178 (89%)	21 (11%)	8 2

All (21) residues with a non-rotameric sidechain are listed below:

Mol	Chain	Res	Type
1	A	251	PRO
1	A	268	ARG
1	A	287	ASN
1	A	289	LEU
1	A	350	ASP
1	A	351	LEU
1	A	352	LEU
1	A	357	ARG
1	A	358	ASN
1	A	363	ASP
1	A	374	LYS
1	A	400	GLN
1	A	406	GLU
1	A	413	GLU
1	A	430	ASN
1	A	440	ARG
1	A	441	LEU
1	A	455	LEU

Continued on next page...

Continued from previous page...

Mol	Chain	Res	Type
1	A	462	ASP
1	A	472	ILE
1	A	474	ASP

Some sidechains can be flipped to improve hydrogen bonding and reduce clashes. All (10) such sidechains are listed below:

Mol	Chain	Res	Type
1	A	265	ASN
1	A	267	GLN
1	A	287	ASN
1	A	313	GLN
1	A	348	HIS
1	A	383	GLN
1	A	420	GLN
1	A	426	HIS
1	A	427	GLN
1	A	430	ASN

5.3.3 RNA [i](#)

There are no RNA molecules in this entry.

5.4 Non-standard residues in protein, DNA, RNA chains [i](#)

There are no non-standard protein/DNA/RNA residues in this entry.

5.5 Carbohydrates [i](#)

There are no carbohydrates in this entry.

5.6 Ligand geometry [i](#)

1 ligand is modelled in this entry.

In the following table, the Counts columns list the number of bonds (or angles) for which Mogul statistics could be retrieved, the number of bonds (or angles) that are observed in the model and the number of bonds (or angles) that are defined in the chemical component dictionary. The Link column lists molecule types, if any, to which the group is linked. The Z score for a bond length (or angle) is the number of standard deviations the observed value is removed from the expected

value. A bond length (or angle) with $|Z| > 2$ is considered an outlier worth inspection. RMSZ is the root-mean-square of all Z scores of the bond lengths (or angles).

Mol	Type	Chain	Res	Link	Bond lengths			Bond angles		
					Counts	RMSZ	$\# Z > 2$	Counts	RMSZ	$\# Z > 2$
2	FEX	A	1	-	40,40,40	5.93	33 (82%)	54,54,54	4.65	28 (51%)

In the following table, the Chirals column lists the number of chiral outliers, the number of chiral centers analysed, the number of these observed in the model and the number defined in the chemical component dictionary. Similar counts are reported in the Torsion and Rings columns. '-' means no outliers of that kind were identified.

Mol	Type	Chain	Res	Link	Chirals	Torsions	Rings
2	FEX	A	1	-	-	0/31/39/39	0/4/4/4

All (33) bond length outliers are listed below:

Mol	Chain	Res	Type	Atoms	Z	Observed(Å)	Ideal(Å)
2	A	1	FEX	O1-C16	-13.98	0.93	1.22
2	A	1	FEX	C6-C9	-10.85	1.21	1.49
2	A	1	FEX	C23-C21	-7.25	1.30	1.51
2	A	1	FEX	C15-N2	-7.09	1.33	1.46
2	A	1	FEX	C23-C24	-3.38	1.35	1.52
2	A	1	FEX	C16-N2	-2.44	1.32	1.36
2	A	1	FEX	C18-C17	2.35	1.44	1.39
2	A	1	FEX	C5-C4	2.47	1.43	1.38
2	A	1	FEX	C14-C13	2.49	1.43	1.38
2	A	1	FEX	C19-C20	2.52	1.43	1.38
2	A	1	FEX	C11-C12	2.60	1.44	1.38
2	A	1	FEX	C19-C18	2.88	1.44	1.38
2	A	1	FEX	C20-C21	3.04	1.45	1.38
2	A	1	FEX	C8-C1	3.35	1.46	1.39
2	A	1	FEX	C8-C7	3.43	1.44	1.38
2	A	1	FEX	C5-C6	3.59	1.47	1.39
2	A	1	FEX	C10-C9	3.82	1.47	1.39
2	A	1	FEX	C22-C17	4.06	1.47	1.39
2	A	1	FEX	C27-C16	4.14	1.56	1.50
2	A	1	FEX	O3-C25	5.42	1.38	1.22
2	A	1	FEX	O2-C25	5.44	1.50	1.32
2	A	1	FEX	C7-C6	5.48	1.51	1.39
2	A	1	FEX	C22-C21	5.53	1.49	1.39
2	A	1	FEX	C4-C1	5.83	1.51	1.39
2	A	1	FEX	C17-N2	5.97	1.56	1.43
2	A	1	FEX	C3-N1	7.14	1.62	1.45

Continued on next page...

Continued from previous page...

Mol	Chain	Res	Type	Atoms	Z	Observed(Å)	Ideal(Å)
2	A	1	FEX	C31-C30	7.27	1.55	1.38
2	A	1	FEX	C30-C29	7.39	1.55	1.38
2	A	1	FEX	C1-N1	7.84	1.56	1.37
2	A	1	FEX	C31-C32	9.27	1.56	1.38
2	A	1	FEX	C28-C27	9.30	1.54	1.39
2	A	1	FEX	C29-C28	9.88	1.57	1.38
2	A	1	FEX	C32-C27	12.37	1.59	1.39

All (28) bond angle outliers are listed below:

Mol	Chain	Res	Type	Atoms	Z	Observed(°)	Ideal(°)
2	A	1	FEX	O1-C16-C27	-14.99	92.14	120.21
2	A	1	FEX	C23-C21-C22	-10.25	103.73	120.56
2	A	1	FEX	C3-N1-C1	-9.04	104.85	120.55
2	A	1	FEX	C15-N2-C17	-8.68	102.31	116.84
2	A	1	FEX	C31-C32-C27	-5.90	113.41	120.35
2	A	1	FEX	C32-C27-C28	-5.69	110.71	118.58
2	A	1	FEX	C30-C29-C28	-5.32	112.90	120.21
2	A	1	FEX	C8-C1-N1	-5.14	114.66	121.64
2	A	1	FEX	C10-C9-C6	-4.63	113.20	121.38
2	A	1	FEX	C31-C30-C29	-4.51	112.37	119.89
2	A	1	FEX	C29-C28-C27	-4.10	115.52	120.35
2	A	1	FEX	C30-C31-C32	-4.00	114.70	120.21
2	A	1	FEX	C32-C27-C16	-3.78	110.77	120.27
2	A	1	FEX	C5-C6-C9	-2.53	116.91	121.38
2	A	1	FEX	C22-C17-N2	-2.01	117.45	119.93
2	A	1	FEX	C2-N1-C1	2.39	124.70	120.55
2	A	1	FEX	C19-C18-C17	2.63	123.21	119.69
2	A	1	FEX	C7-C6-C9	2.76	126.25	121.38
2	A	1	FEX	C23-C24-C25	3.60	123.44	113.80
2	A	1	FEX	C3-N1-C2	4.44	130.41	116.03
2	A	1	FEX	C18-C17-N2	4.50	127.01	120.17
2	A	1	FEX	C4-C1-N1	5.15	128.63	121.64
2	A	1	FEX	C14-C9-C6	6.09	132.12	121.38
2	A	1	FEX	C27-C16-N2	6.42	129.05	118.33
2	A	1	FEX	C12-C15-N2	6.56	125.32	113.35
2	A	1	FEX	C23-C21-C20	6.69	137.89	121.24
2	A	1	FEX	C17-N2-C16	8.07	134.49	122.81
2	A	1	FEX	C24-C23-C21	9.96	148.51	112.76

There are no chirality outliers.

There are no torsion outliers.

There are no ring outliers.

1 monomer is involved in 4 short contacts:

Mol	Chain	Res	Type	Clashes	Symm-Clashes
2	A	1	FEX	4	0

5.7 Other polymers [i](#)

There are no such residues in this entry.

5.8 Polymer linkage issues [i](#)

There are no chain breaks in this entry.

6 Fit of model and data

6.1 Protein, DNA and RNA chains

EDS was not executed - this section is therefore empty.

6.2 Non-standard residues in protein, DNA, RNA chains

EDS was not executed - this section is therefore empty.

6.3 Carbohydrates

EDS was not executed - this section is therefore empty.

6.4 Ligands

EDS was not executed - this section is therefore empty.

6.5 Other polymers

EDS was not executed - this section is therefore empty.