



Full wwPDB X-ray Structure Validation Report ⓘ

Feb 13, 2017 – 03:39 am GMT

PDB ID : 3OXI
Title : Design and Synthesis of Disubstituted Thiophene and Thiazole Based Inhibitors of JNK for the Treatment of Neurodegenerative Diseases
Authors : Hom, R.K.; Bowers, S.; Sealy, J.; Truong, A.; Probst, G.D.; Neitzel, M.; Neitz, J.; Fang, L.; Brogley, L.; Wu, J.; Konradi, A.W.; Sham, H.; Toth, G.; Pan, H.; Yao, N.; Artis, D.R.
Deposited on : 2010-09-21
Resolution : 2.20 Å(reported)

This is a Full wwPDB X-ray Structure Validation Report for a publicly released PDB entry.

We welcome your comments at validation@mail.wwpdb.org

A user guide is available at

<http://wwpdb.org/validation/2016/XrayValidationReportHelp>

with specific help available everywhere you see the ⓘ symbol.

The following versions of software and data (see [references ⓘ](#)) were used in the production of this report:

MolProbity	:	4.02b-467
Mogul	:	1.7.2 (RC1), CSD as538be (2017)
Xtriage (Phenix)	:	1.9-1692
EDS	:	trunk28620
Percentile statistics	:	20161228.v01 (using entries in the PDB archive December 28th 2016)
Refmac	:	5.8.0135
CCP4	:	6.5.0
Ideal geometry (proteins)	:	Engh & Huber (2001)
Ideal geometry (DNA, RNA)	:	Parkinson et al. (1996)
Validation Pipeline (wwPDB-VP)	:	recalc28949

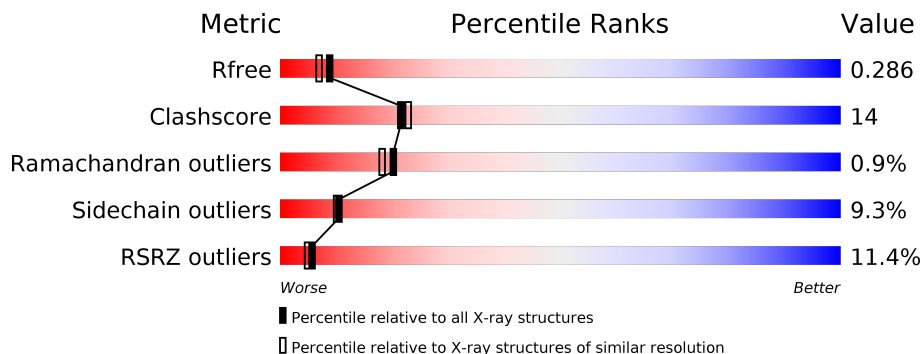
1 Overall quality at a glance

The following experimental techniques were used to determine the structure:

X-RAY DIFFRACTION

The reported resolution of this entry is 2.20 Å.

Percentile scores (ranging between 0-100) for global validation metrics of the entry are shown in the following graphic. The table shows the number of entries on which the scores are based.



Metric	Whole archive (#Entries)	Similar resolution (#Entries, resolution range(Å))
R_{free}	100719	4002 (2.20-2.20)
Clashscore	112137	4730 (2.20-2.20)
Ramachandran outliers	110173	4656 (2.20-2.20)
Sidechain outliers	110143	4657 (2.20-2.20)
RSRZ outliers	101464	4033 (2.20-2.20)

The table below summarises the geometric issues observed across the polymeric chains and their fit to the electron density. The red, orange, yellow and green segments on the lower bar indicate the fraction of residues that contain outliers for ≥ 3 , 2, 1 and 0 types of geometric quality criteria. A grey segment represents the fraction of residues that are not modelled. The numeric value for each fraction is indicated below the corresponding segment, with a dot representing fractions $\leq 5\%$. The upper red bar (where present) indicates the fraction of residues that have poor fit to the electron density. The numeric value is given above the bar.

Mol	Chain	Length	Quality of chain
1	A	362	<div> <div>10%</div> <div> <div></div> <div>63%</div> <div>23%</div> <div>•</div> <div>11%</div> </div> </div>
2	J	10	<div> <div>30%</div> <div> <div></div> <div>70%</div> <div>30%</div> </div> </div>

2 Entry composition [i](#)

There are 4 unique types of molecules in this entry. The entry contains 2809 atoms, of which 0 are hydrogens and 0 are deuteriums.

In the tables below, the ZeroOcc column contains the number of atoms modelled with zero occupancy, the AltConf column contains the number of residues with at least one atom in alternate conformation and the Trace column contains the number of residues modelled with at most 2 atoms.

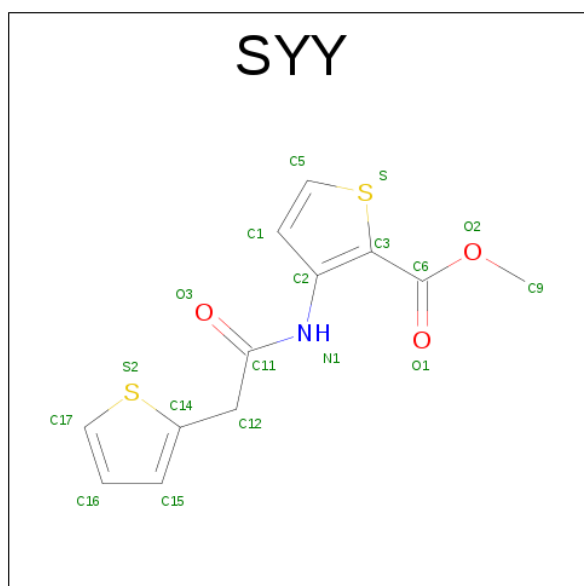
- Molecule 1 is a protein called Mitogen-activated protein kinase 10.

Mol	Chain	Residues	Atoms					ZeroOcc	AltConf	Trace
1	A	322	Total	C	N	O	S	0	0	0
			2624	1687	450	468	19			

- Molecule 2 is a protein called Mitogen-activated protein kinase 8 interacting protein 1.

Mol	Chain	Residues	Atoms				ZeroOcc	AltConf	Trace
2	J	10	Total	C	N	O	0	0	0
			83	55	15	13			

- Molecule 3 is METHYL 3-[(THIOPHEN-2-YLACETYL)AMINO]THIOPHENE-2-CARBOXYLATE (three-letter code: SY Y) (formula: C₁₂H₁₁NO₃S₂).



Mol	Chain	Residues	Atoms					ZeroOcc	AltConf
3	A	1	Total	C	N	O	S	0	0
			18	12	1	3	2		

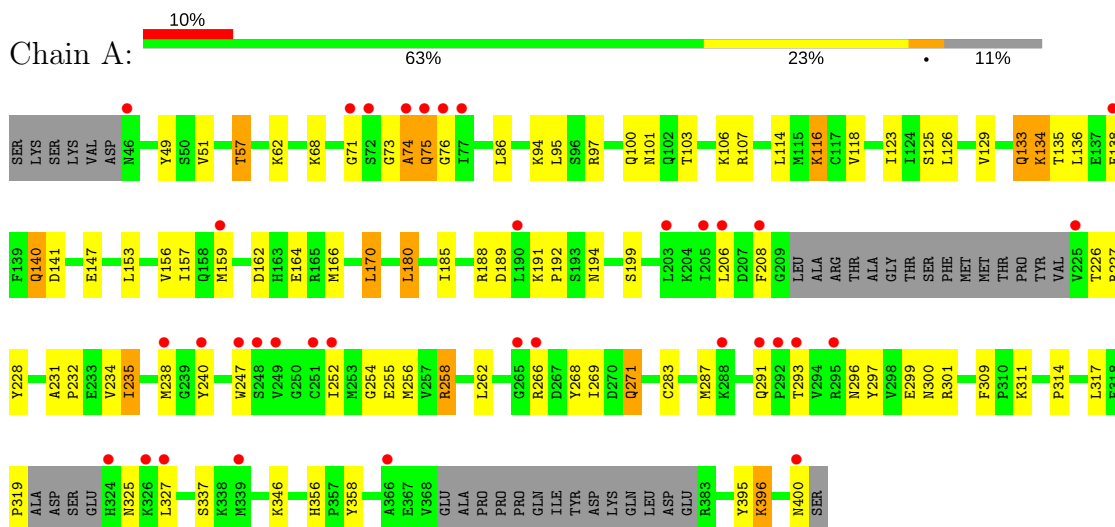
- Molecule 4 is water.

Mol	Chain	Residues	Atoms		ZeroOcc	AltConf
4	A	82	Total 82	O 82	0	0
4	J	2	Total 2	O 2	0	0

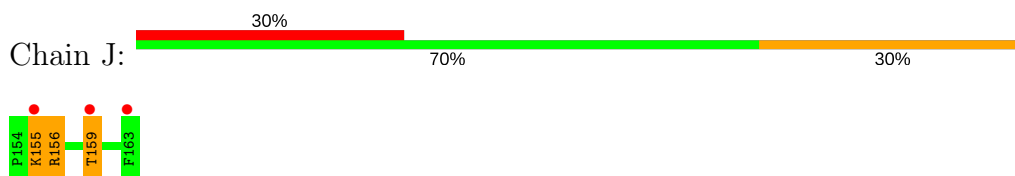
3 Residue-property plots [i](#)

These plots are drawn for all protein, RNA and DNA chains in the entry. The first graphic for a chain summarises the proportions of the various outlier classes displayed in the second graphic. The second graphic shows the sequence view annotated by issues in geometry and electron density. Residues are color-coded according to the number of geometric quality criteria for which they contain at least one outlier: green = 0, yellow = 1, orange = 2 and red = 3 or more. A red dot above a residue indicates a poor fit to the electron density ($RSRZ > 2$). Stretches of 2 or more consecutive residues without any outlier are shown as a green connector. Residues present in the sample, but not in the model, are shown in grey.

- Molecule 1: Mitogen-activated protein kinase 10



- Molecule 2: Mitogen-activated protein kinase 8 interacting protein 1



4 Data and refinement statistics

Property	Value	Source
Space group	P 21 21 21	Depositor
Cell constants a, b, c, α , β , γ	60.02Å 78.08Å 83.51Å 90.00° 90.00° 90.00°	Depositor
Resolution (Å)	32.73 – 2.20 32.73 – 2.20	Depositor EDS
% Data completeness (in resolution range)	96.3 (32.73-2.20) 96.3 (32.73-2.20)	Depositor EDS
R_{merge}	(Not available)	Depositor
R_{sym}	(Not available)	Depositor
$\langle I/\sigma(I) \rangle$ ¹	2.29 (at 2.20Å)	Xtriage
Refinement program	REFMAC 5.2.0019	Depositor
R, R_{free}	0.229 , 0.275 0.232 , 0.286	Depositor DCC
R_{free} test set	1015 reflections (5.42%)	DCC
Wilson B-factor (Å ²)	49.4	Xtriage
Anisotropy	0.056	Xtriage
Bulk solvent k_{sol} (e/Å ³), B_{sol} (Å ²)	0.35 , 52.1	EDS
L-test for twinning ²	$\langle L \rangle = 0.48$, $\langle L^2 \rangle = 0.32$	Xtriage
Estimated twinning fraction	No twinning to report.	Xtriage
F_o, F_c correlation	0.95	EDS
Total number of atoms	2809	wwPDB-VP
Average B, all atoms (Å ²)	54.0	wwPDB-VP

Xtriage's analysis on translational NCS is as follows: *The largest off-origin peak in the Patterson function is 5.27% of the height of the origin peak. No significant pseudotranslation is detected.*

¹Intensities estimated from amplitudes.

²Theoretical values of $\langle |L| \rangle$, $\langle L^2 \rangle$ for acentric reflections are 0.5, 0.333 respectively for untwinned datasets, and 0.375, 0.2 for perfectly twinned datasets.

5 Model quality [i](#)

5.1 Standard geometry [i](#)

Bond lengths and bond angles in the following residue types are not validated in this section: SYY

The Z score for a bond length (or angle) is the number of standard deviations the observed value is removed from the expected value. A bond length (or angle) with $|Z| > 5$ is considered an outlier worth inspection. RMSZ is the root-mean-square of all Z scores of the bond lengths (or angles).

Mol	Chain	Bond lengths		Bond angles	
		RMSZ	$\# Z > 5$	RMSZ	$\# Z > 5$
1	A	0.71	0/2681	0.75	1/3622 (0.0%)
2	J	0.57	0/85	0.69	0/114
All	All	0.71	0/2766	0.74	1/3736 (0.0%)

There are no bond length outliers.

All (1) bond angle outliers are listed below:

Mol	Chain	Res	Type	Atoms	Z	Observed(°)	Ideal(°)
1	A	97	ARG	NE-CZ-NH2	5.50	123.05	120.30

There are no chirality outliers.

There are no planarity outliers.

5.2 Too-close contacts [i](#)

In the following table, the Non-H and H(model) columns list the number of non-hydrogen atoms and hydrogen atoms in the chain respectively. The H(added) column lists the number of hydrogen atoms added and optimized by MolProbity. The Clashes column lists the number of clashes within the asymmetric unit, whereas Symm-Clashes lists symmetry related clashes.

Mol	Chain	Non-H	H(model)	H(added)	Clashes	Symm-Clashes
1	A	2624	0	2656	71	0
2	J	83	0	91	2	0
3	A	18	0	11	3	0
4	A	82	0	0	9	0
4	J	2	0	0	0	0
All	All	2809	0	2758	74	0

The all-atom clashscore is defined as the number of clashes found per 1000 atoms (including

hydrogen atoms). The all-atom clashscore for this structure is 14.

All (74) close contacts within the same asymmetric unit are listed below, sorted by their clash magnitude.

Atom-1	Atom-2	Interatomic distance (Å)	Clash overlap (Å)
1:A:327:LEU:O	1:A:327:LEU:HD13	1.78	0.84
1:A:293:THR:HG22	4:A:10:HOH:O	1.77	0.83
1:A:118:VAL:O	1:A:118:VAL:HG23	1.78	0.82
1:A:125:SER:OG	1:A:147:GLU:OE1	1.98	0.80
4:A:438:HOH:O	2:J:159:THR:HG22	1.83	0.79
1:A:116:LYS:NZ	1:A:400:ASN:OD1	2.13	0.78
1:A:188:ARG:HD3	1:A:240:TYR:CZ	2.21	0.76
1:A:118:VAL:O	1:A:118:VAL:CG2	2.35	0.75
1:A:71:GLY:HA3	3:A:1:SYU:H9	1.69	0.73
1:A:62:LYS:HB2	1:A:62:LYS:NZ	2.05	0.71
1:A:296:ASN:O	1:A:300:ASN:ND2	2.25	0.69
1:A:252:ILE:HG22	1:A:256:MET:HE2	1.74	0.69
1:A:153:LEU:CD2	1:A:156:VAL:HG21	2.24	0.67
1:A:301:ARG:HD2	4:A:5:HOH:O	1.95	0.66
1:A:252:ILE:HG22	1:A:256:MET:CE	2.26	0.65
1:A:153:LEU:HD22	1:A:156:VAL:HG21	1.77	0.65
1:A:116:LYS:HZ1	1:A:400:ASN:CG	2.00	0.64
1:A:153:LEU:HD22	1:A:156:VAL:CG2	2.28	0.63
1:A:258:ARG:HD2	1:A:262:LEU:HD12	1.80	0.63
1:A:73:GLY:O	1:A:76:GLY:N	2.33	0.61
1:A:62:LYS:HB2	1:A:62:LYS:HZ3	1.65	0.59
1:A:156:VAL:O	1:A:159:MET:HG2	2.04	0.58
1:A:57:THR:O	1:A:94:LYS:NZ	2.37	0.58
1:A:319:PRO:C	1:A:325:ASN:ND2	2.58	0.56
1:A:138:GLU:O	1:A:140:GLN:CD	2.45	0.56
1:A:133:GLN:HE22	1:A:141:ASP:H	1.53	0.55
1:A:314:PRO:HD2	1:A:317:LEU:HD12	1.89	0.55
1:A:135:THR:OG1	1:A:138:GLU:HG3	2.07	0.53
1:A:71:GLY:HA3	3:A:1:SYU:C9	2.38	0.53
1:A:126:LEU:HD21	1:A:129:VAL:CG1	2.39	0.51
1:A:134:LYS:HA	4:A:22:HOH:O	2.10	0.51
1:A:191:LYS:HB2	1:A:192:PRO:CD	2.40	0.51
1:A:153:LEU:CD2	1:A:156:VAL:CG2	2.88	0.50
1:A:269:ILE:HG23	1:A:297:TYR:OH	2.11	0.50
1:A:49:TYR:CE2	1:A:51:VAL:HG22	2.47	0.50
1:A:74:ALA:HB3	4:A:440:HOH:O	2.11	0.49
1:A:189:ASP:O	1:A:194:ASN:ND2	2.46	0.49
1:A:153:LEU:HA	1:A:156:VAL:HG22	1.95	0.48

Continued on next page...

Continued from previous page...

Atom-1	Atom-2	Interatomic distance (Å)	Clash overlap (Å)
1:A:231:ALA:HA	1:A:247:TRP:CD1	2.48	0.48
1:A:254:GLY:HA3	1:A:262:LEU:HD21	1.95	0.48
1:A:68:LYS:HB2	1:A:68:LYS:NZ	2.28	0.48
1:A:258:ARG:CD	1:A:262:LEU:HD12	2.44	0.48
1:A:309:PHE:CZ	1:A:337:SER:HA	2.49	0.48
1:A:157:ILE:CG2	1:A:255:GLU:HG2	2.44	0.48
1:A:185:ILE:HG21	1:A:208:PHE:CB	2.44	0.47
1:A:356:HIS:HD2	1:A:358:TYR:H	1.62	0.47
1:A:125:SER:CB	1:A:147:GLU:OE1	2.64	0.46
1:A:226:THR:HG23	1:A:228:TYR:CD2	2.51	0.45
1:A:114:LEU:O	1:A:118:VAL:HG13	2.16	0.45
1:A:162:ASP:OD2	1:A:164:GLU:HB2	2.16	0.45
2:J:155:LYS:HE3	2:J:156:ARG:O	2.17	0.45
1:A:206:LEU:HA	1:A:206:LEU:HD23	1.86	0.44
1:A:116:LYS:NZ	1:A:400:ASN:CG	2.65	0.44
1:A:395:TYR:CE2	4:A:422:HOH:O	2.67	0.44
1:A:396:LYS:NZ	4:A:425:HOH:O	2.42	0.44
1:A:153:LEU:HD23	1:A:156:VAL:HG21	1.99	0.44
1:A:123:ILE:HD13	1:A:180:LEU:HD13	1.99	0.44
1:A:114:LEU:O	1:A:118:VAL:HG22	2.18	0.43
1:A:268:TYR:HA	1:A:271:GLN:HB2	1.99	0.43
3:A:1:SYU:O3	3:A:1:SYU:H1	2.20	0.42
1:A:170:LEU:HD11	1:A:256:MET:HE3	2.02	0.42
1:A:62:LYS:HB2	1:A:62:LYS:HZ2	1.83	0.42
1:A:68:LYS:CB	1:A:68:LYS:NZ	2.82	0.42
1:A:101:ASN:OD1	1:A:103:THR:HB	2.20	0.41
1:A:258:ARG:HD2	1:A:262:LEU:CD1	2.49	0.41
1:A:327:LEU:CD1	1:A:327:LEU:O	2.58	0.41
1:A:100:GLN:HG3	1:A:101:ASN:HD22	1.86	0.41
1:A:188:ARG:HD3	1:A:240:TYR:CE1	2.54	0.41
1:A:291:GLN:HB3	4:A:10:HOH:O	2.20	0.41
1:A:62:LYS:CB	1:A:62:LYS:NZ	2.73	0.41
1:A:346:LYS:HD2	4:A:431:HOH:O	2.20	0.40
1:A:123:ILE:CD1	1:A:180:LEU:HD13	2.51	0.40
1:A:234:VAL:O	1:A:235:ILE:C	2.59	0.40
1:A:232:PRO:HD3	1:A:247:TRP:CE2	2.56	0.40

There are no symmetry-related clashes.

5.3 Torsion angles

5.3.1 Protein backbone

In the following table, the Percentiles column shows the percent Ramachandran outliers of the chain as a percentile score with respect to all X-ray entries followed by that with respect to entries of similar resolution.

The Analysed column shows the number of residues for which the backbone conformation was analysed, and the total number of residues.

Mol	Chain	Analysed	Favoured	Allowed	Outliers	Percentiles	
1	A	314/362 (87%)	293 (93%)	18 (6%)	3 (1%)	18	16
2	J	8/10 (80%)	8 (100%)	0	0	100	100
All	All	322/372 (87%)	301 (94%)	18 (6%)	3 (1%)	20	18

All (3) Ramachandran outliers are listed below:

Mol	Chain	Res	Type
1	A	74	ALA
1	A	75	GLN
1	A	235	ILE

5.3.2 Protein sidechains

In the following table, the Percentiles column shows the percent sidechain outliers of the chain as a percentile score with respect to all X-ray entries followed by that with respect to entries of similar resolution.

The Analysed column shows the number of residues for which the sidechain conformation was analysed, and the total number of residues.

Mol	Chain	Analysed	Rotameric	Outliers	Percentiles	
1	A	292/327 (89%)	267 (91%)	25 (9%)	12	12
2	J	10/10 (100%)	7 (70%)	3 (30%)	0	0
All	All	302/337 (90%)	274 (91%)	28 (9%)	10	10

All (28) residues with a non-rotameric sidechain are listed below:

Mol	Chain	Res	Type
1	A	57	THR
1	A	75	GLN
1	A	86	LEU

Continued on next page...

Continued from previous page...

Mol	Chain	Res	Type
1	A	95	LEU
1	A	106	LYS
1	A	107	ARG
1	A	116	LYS
1	A	133	GLN
1	A	134	LYS
1	A	136	LEU
1	A	140	GLN
1	A	166	MET
1	A	170	LEU
1	A	180	LEU
1	A	199	SER
1	A	227	ARG
1	A	238	MET
1	A	258	ARG
1	A	266	ARG
1	A	271	GLN
1	A	283	CYS
1	A	287	MET
1	A	299	GLU
1	A	311	LYS
1	A	396	LYS
2	J	155	LYS
2	J	156	ARG
2	J	159	THR

Some sidechains can be flipped to improve hydrogen bonding and reduce clashes. All (7) such sidechains are listed below:

Mol	Chain	Res	Type
1	A	100	GLN
1	A	133	GLN
1	A	273	ASN
1	A	296	ASN
1	A	300	ASN
1	A	356	HIS
1	A	360	ASN

5.3.3 RNA ⓘ

There are no RNA molecules in this entry.

5.4 Non-standard residues in protein, DNA, RNA chains [i](#)

There are no non-standard protein/DNA/RNA residues in this entry.

5.5 Carbohydrates [i](#)

There are no carbohydrates in this entry.

5.6 Ligand geometry [i](#)

1 ligand is modelled in this entry.

In the following table, the Counts columns list the number of bonds (or angles) for which Mogul statistics could be retrieved, the number of bonds (or angles) that are observed in the model and the number of bonds (or angles) that are defined in the chemical component dictionary. The Link column lists molecule types, if any, to which the group is linked. The Z score for a bond length (or angle) is the number of standard deviations the observed value is removed from the expected value. A bond length (or angle) with $|Z| > 2$ is considered an outlier worth inspection. RMSZ is the root-mean-square of all Z scores of the bond lengths (or angles).

Mol	Type	Chain	Res	Link	Bond lengths			Bond angles		
					Counts	RMSZ	$\# Z > 2$	Counts	RMSZ	$\# Z > 2$
3	SYX	A	1	-	16,19,19	1.52	3 (18%)	12,25,25	1.85	2 (16%)

In the following table, the Chirals column lists the number of chiral outliers, the number of chiral centers analysed, the number of these observed in the model and the number defined in the chemical component dictionary. Similar counts are reported in the Torsion and Rings columns. '-' means no outliers of that kind were identified.

Mol	Type	Chain	Res	Link	Chirals	Torsions	Rings
3	SYX	A	1	-	-	0/8/14/14	0/2/2/2

All (3) bond length outliers are listed below:

Mol	Chain	Res	Type	Atoms	Z	Observed(Å)	Ideal(Å)
3	A	1	SYX	C2-N1	-2.85	1.36	1.41
3	A	1	SYX	C2-C3	2.95	1.49	1.40
3	A	1	SYX	O2-C6	3.75	1.42	1.33

All (2) bond angle outliers are listed below:

Mol	Chain	Res	Type	Atoms	Z	Observed(°)	Ideal(°)
3	A	1	SYX	O2-C6-O1	-4.51	114.24	123.44

Continued on next page...

Continued from previous page...

Mol	Chain	Res	Type	Atoms	Z	Observed($^{\circ}$)	Ideal($^{\circ}$)
3	A	1	SYN	C16-C17-S2	-2.37	110.63	113.18

There are no chirality outliers.

There are no torsion outliers.

There are no ring outliers.

1 monomer is involved in 3 short contacts:

Mol	Chain	Res	Type	Clashes	Symm-Clashes
3	A	1	SYN	3	0

5.7 Other polymers [i](#)

There are no such residues in this entry.

5.8 Polymer linkage issues [i](#)

There are no chain breaks in this entry.

6 Fit of model and data ⓘ

6.1 Protein, DNA and RNA chains ⓘ

In the following table, the column labelled ‘#RSRZ > 2’ contains the number (and percentage) of RSRZ outliers, followed by percent RSRZ outliers for the chain as percentile scores relative to all X-ray entries and entries of similar resolution. The OWAB column contains the minimum, median, 95th percentile and maximum values of the occupancy-weighted average B-factor per residue. The column labelled ‘Q < 0.9’ lists the number of (and percentage) of residues with an average occupancy less than 0.9.

Mol	Chain	Analysed	<RSRZ>	#RSRZ>2	OWAB(Å ²)	Q<0.9
1	A	322/362 (88%)	0.59	35 (10%) 6 5	31, 53, 74, 82	1 (0%)
2	J	10/10 (100%)	1.19	3 (30%) 1 0	62, 68, 74, 74	0
All	All	332/372 (89%)	0.60	38 (11%) 6 5	31, 53, 74, 82	1 (0%)

All (38) RSRZ outliers are listed below:

Mol	Chain	Res	Type	RSRZ
1	A	327	LEU	7.0
1	A	225	VAL	6.6
1	A	208	PHE	5.2
1	A	74	ALA	5.2
1	A	76	GLY	4.8
1	A	266	ARG	4.7
1	A	72	SER	4.4
1	A	71	GLY	4.3
1	A	324	HIS	3.9
1	A	247	TRP	3.6
1	A	75	GLN	3.5
1	A	46	ASN	3.5
1	A	251	CYS	3.4
1	A	190	LEU	3.4
2	J	155	LYS	3.3
1	A	206	LEU	3.3
1	A	400	ASN	3.0
2	J	163	PHE	3.0
1	A	292	PRO	2.8
1	A	159	MET	2.7
1	A	326	LYS	2.7
1	A	138	GLU	2.6
1	A	249	VAL	2.6
1	A	288	LYS	2.5

Continued on next page...

Continued from previous page...

Mol	Chain	Res	Type	RSRZ
1	A	366	ALA	2.5
2	J	159	THR	2.5
1	A	238	MET	2.4
1	A	252	ILE	2.4
1	A	205	ILE	2.4
1	A	293	THR	2.3
1	A	291	GLN	2.3
1	A	77	ILE	2.2
1	A	203	LEU	2.2
1	A	265	GLY	2.2
1	A	339	MET	2.1
1	A	295	ARG	2.1
1	A	240	TYR	2.1
1	A	248	SER	2.0

6.2 Non-standard residues in protein, DNA, RNA chains [i](#)

There are no non-standard protein/DNA/RNA residues in this entry.

6.3 Carbohydrates [i](#)

There are no carbohydrates in this entry.

6.4 Ligands [i](#)

In the following table, the Atoms column lists the number of modelled atoms in the group and the number defined in the chemical component dictionary. LLDF column lists the quality of electron density of the group with respect to its neighbouring residues in protein, DNA or RNA chains. The B-factors column lists the minimum, median, 95th percentile and maximum values of B factors of atoms in the group. The column labelled 'Q < 0.9' lists the number of atoms with occupancy less than 0.9.

Mol	Type	Chain	Res	Atoms	RSCC	RSR	LLDF	B-factors(Å ²)	Q<0.9
3	SYN	A	1	18/18	0.94	0.15	-0.77	46,49,55,56	0

6.5 Other polymers [i](#)

There are no such residues in this entry.