



# Full wwPDB X-ray Structure Validation Report ⓘ

Aug 28, 2017 – 11:24 PM EDT

PDB ID : 4OXX  
Title : Multiple binding modes of inhibitor PT155 to the Mycobacterium tuberculosis enoyl-ACP reductase InhA within a tetramer  
Authors : Li, H.J.; Pan, P.; Lai, C.T.; Liu, N.; Garcia-Diaz, M.; Simmerling, C.; Tonge, P.J.  
Deposited on : unknown  
Resolution : 1.84 Å(reported)

This is a Full wwPDB X-ray Structure Validation Report for a publicly released PDB entry.

We welcome your comments at [validation@mail.wwpdb.org](mailto:validation@mail.wwpdb.org)

A user guide is available at

<http://wwpdb.org/validation/2016/XrayValidationReportHelp>

with specific help available everywhere you see the ⓘ symbol.

---

The following versions of software and data (see [references ⓘ](#)) were used in the production of this report:

MolProbity	:	4.02b-467
Mogul	:	1.7.2 (RC1), CSD as538be (2017)
Xtriage (Phenix)	:	1.9-1692
EDS	:	rb-20029824
Percentile statistics	:	20161228.v01 (using entries in the PDB archive December 28th 2016)
Refmac	:	5.8.0135
CCP4	:	6.5.0
Ideal geometry (proteins)	:	Engh & Huber (2001)
Ideal geometry (DNA, RNA)	:	Parkinson et al. (1996)
Validation Pipeline (wwPDB-VP)	:	rb-20029824

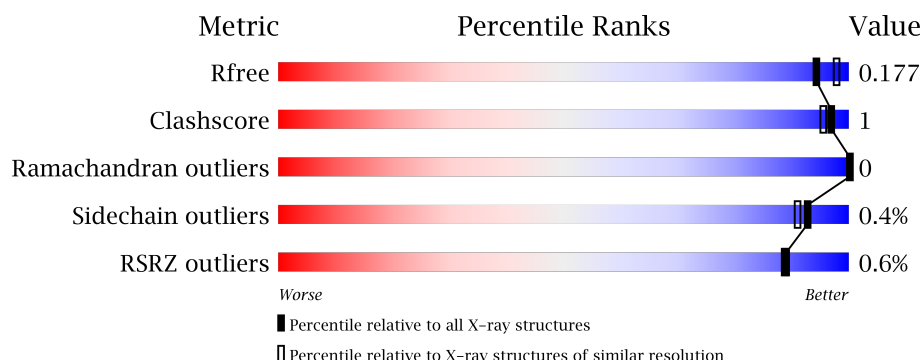
# 1 Overall quality at a glance ⓘ

The following experimental techniques were used to determine the structure:

## *X-RAY DIFFRACTION*

The reported resolution of this entry is 1.84 Å.

Percentile scores (ranging between 0-100) for global validation metrics of the entry are shown in the following graphic. The table shows the number of entries on which the scores are based.



Metric	Whole archive (#Entries)	Similar resolution (#Entries, resolution range(Å))
$R_{free}$	100719	2964 (1.86-1.82)
Clashscore	112137	3197 (1.86-1.82)
Ramachandran outliers	110173	3164 (1.86-1.82)
Sidechain outliers	110143	3165 (1.86-1.82)
RSRZ outliers	101464	2973 (1.86-1.82)

The table below summarises the geometric issues observed across the polymeric chains and their fit to the electron density. The red, orange, yellow and green segments on the lower bar indicate the fraction of residues that contain outliers for  $\geq 3$ , 2, 1 and 0 types of geometric quality criteria. A grey segment represents the fraction of residues that are not modelled. The numeric value for each fraction is indicated below the corresponding segment, with a dot representing fractions  $\leq 5\%$ . The upper red bar (where present) indicates the fraction of residues that have poor fit to the electron density. The numeric value is given above the bar.

Mol	Chain	Length	Quality of chain
1	A	289	
1	B	289	
1	C	289	
1	D	289	

The following table lists non-polymeric compounds, carbohydrate monomers and non-standard residues in protein, DNA, RNA chains that are outliers for geometric or electron-density-fit crite-

ria:

Mol	Type	Chain	Res	Chirality	Geometry	Clashes	Electron density
4	2NV	B	304	-	-	-	X

## 2 Entry composition

There are 5 unique types of molecules in this entry. The entry contains 8877 atoms, of which 0 are hydrogens and 0 are deuteriums.

In the tables below, the ZeroOcc column contains the number of atoms modelled with zero occupancy, the AltConf column contains the number of residues with at least one atom in alternate conformation and the Trace column contains the number of residues modelled with at most 2 atoms.

- Molecule 1 is a protein called Enoyl-[acyl-carrier-protein] reductase [NADH].

Mol	Chain	Residues	Atoms					ZeroOcc	AltConf	Trace
1	A	267	Total	C	N	O	S	0	15	0
			2055	1310	356	378	11			
1	B	265	Total	C	N	O	S	0	9	0
			1985	1268	344	361	12			
1	C	267	Total	C	N	O	S	0	10	0
			2017	1289	351	365	12			
1	D	267	Total	C	N	O	S	0	14	0
			2052	1310	355	375	12			

There are 80 discrepancies between the modelled and reference sequences:

Chain	Residue	Modelled	Actual	Comment	Reference
A	-19	MET	-	expression tag	UNP P0A5Y6
A	-18	GLY	-	expression tag	UNP P0A5Y6
A	-17	SER	-	expression tag	UNP P0A5Y6
A	-16	SER	-	expression tag	UNP P0A5Y6
A	-15	HIS	-	expression tag	UNP P0A5Y6
A	-14	HIS	-	expression tag	UNP P0A5Y6
A	-13	HIS	-	expression tag	UNP P0A5Y6
A	-12	HIS	-	expression tag	UNP P0A5Y6
A	-11	HIS	-	expression tag	UNP P0A5Y6
A	-10	HIS	-	expression tag	UNP P0A5Y6
A	-9	SER	-	expression tag	UNP P0A5Y6
A	-8	SER	-	expression tag	UNP P0A5Y6
A	-7	GLY	-	expression tag	UNP P0A5Y6
A	-6	LEU	-	expression tag	UNP P0A5Y6
A	-5	VAL	-	expression tag	UNP P0A5Y6
A	-4	PRO	-	expression tag	UNP P0A5Y6
A	-3	ARG	-	expression tag	UNP P0A5Y6
A	-2	GLY	-	expression tag	UNP P0A5Y6
A	-1	SER	-	expression tag	UNP P0A5Y6
A	0	HIS	-	expression tag	UNP P0A5Y6
B	-19	MET	-	expression tag	UNP P0A5Y6

*Continued on next page...*

*Continued from previous page...*

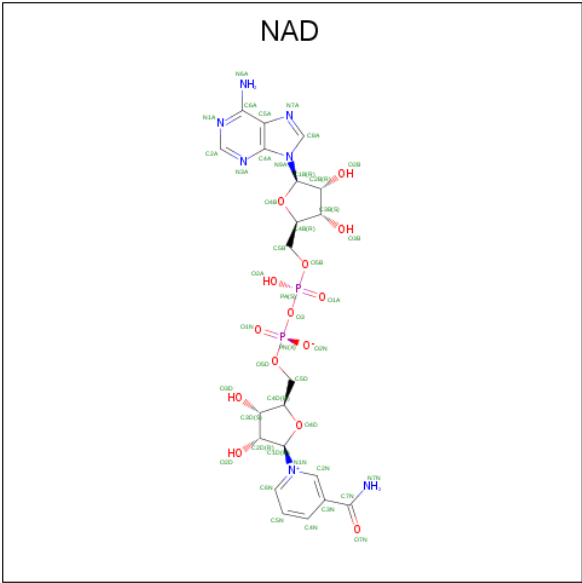
Chain	Residue	Modelled	Actual	Comment	Reference
B	-18	GLY	-	expression tag	UNP P0A5Y6
B	-17	SER	-	expression tag	UNP P0A5Y6
B	-16	SER	-	expression tag	UNP P0A5Y6
B	-15	HIS	-	expression tag	UNP P0A5Y6
B	-14	HIS	-	expression tag	UNP P0A5Y6
B	-13	HIS	-	expression tag	UNP P0A5Y6
B	-12	HIS	-	expression tag	UNP P0A5Y6
B	-11	HIS	-	expression tag	UNP P0A5Y6
B	-10	HIS	-	expression tag	UNP P0A5Y6
B	-9	SER	-	expression tag	UNP P0A5Y6
B	-8	SER	-	expression tag	UNP P0A5Y6
B	-7	GLY	-	expression tag	UNP P0A5Y6
B	-6	LEU	-	expression tag	UNP P0A5Y6
B	-5	VAL	-	expression tag	UNP P0A5Y6
B	-4	PRO	-	expression tag	UNP P0A5Y6
B	-3	ARG	-	expression tag	UNP P0A5Y6
B	-2	GLY	-	expression tag	UNP P0A5Y6
B	-1	SER	-	expression tag	UNP P0A5Y6
B	0	HIS	-	expression tag	UNP P0A5Y6
C	-19	MET	-	expression tag	UNP P0A5Y6
C	-18	GLY	-	expression tag	UNP P0A5Y6
C	-17	SER	-	expression tag	UNP P0A5Y6
C	-16	SER	-	expression tag	UNP P0A5Y6
C	-15	HIS	-	expression tag	UNP P0A5Y6
C	-14	HIS	-	expression tag	UNP P0A5Y6
C	-13	HIS	-	expression tag	UNP P0A5Y6
C	-12	HIS	-	expression tag	UNP P0A5Y6
C	-11	HIS	-	expression tag	UNP P0A5Y6
C	-10	HIS	-	expression tag	UNP P0A5Y6
C	-9	SER	-	expression tag	UNP P0A5Y6
C	-8	SER	-	expression tag	UNP P0A5Y6
C	-7	GLY	-	expression tag	UNP P0A5Y6
C	-6	LEU	-	expression tag	UNP P0A5Y6
C	-5	VAL	-	expression tag	UNP P0A5Y6
C	-4	PRO	-	expression tag	UNP P0A5Y6
C	-3	ARG	-	expression tag	UNP P0A5Y6
C	-2	GLY	-	expression tag	UNP P0A5Y6
C	-1	SER	-	expression tag	UNP P0A5Y6
C	0	HIS	-	expression tag	UNP P0A5Y6
D	-19	MET	-	expression tag	UNP P0A5Y6
D	-18	GLY	-	expression tag	UNP P0A5Y6
D	-17	SER	-	expression tag	UNP P0A5Y6

*Continued on next page...*

Continued from previous page...

Chain	Residue	Modelled	Actual	Comment	Reference
D	-16	SER	-	expression tag	UNP P0A5Y6
D	-15	HIS	-	expression tag	UNP P0A5Y6
D	-14	HIS	-	expression tag	UNP P0A5Y6
D	-13	HIS	-	expression tag	UNP P0A5Y6
D	-12	HIS	-	expression tag	UNP P0A5Y6
D	-11	HIS	-	expression tag	UNP P0A5Y6
D	-10	HIS	-	expression tag	UNP P0A5Y6
D	-9	SER	-	expression tag	UNP P0A5Y6
D	-8	SER	-	expression tag	UNP P0A5Y6
D	-7	GLY	-	expression tag	UNP P0A5Y6
D	-6	LEU	-	expression tag	UNP P0A5Y6
D	-5	VAL	-	expression tag	UNP P0A5Y6
D	-4	PRO	-	expression tag	UNP P0A5Y6
D	-3	ARG	-	expression tag	UNP P0A5Y6
D	-2	GLY	-	expression tag	UNP P0A5Y6
D	-1	SER	-	expression tag	UNP P0A5Y6
D	0	HIS	-	expression tag	UNP P0A5Y6

- Molecule 2 is NICOTINAMIDE-ADENINE-DINUCLEOTIDE (three-letter code: NAD) (formula: C<sub>21</sub>H<sub>27</sub>N<sub>7</sub>O<sub>14</sub>P<sub>2</sub>).



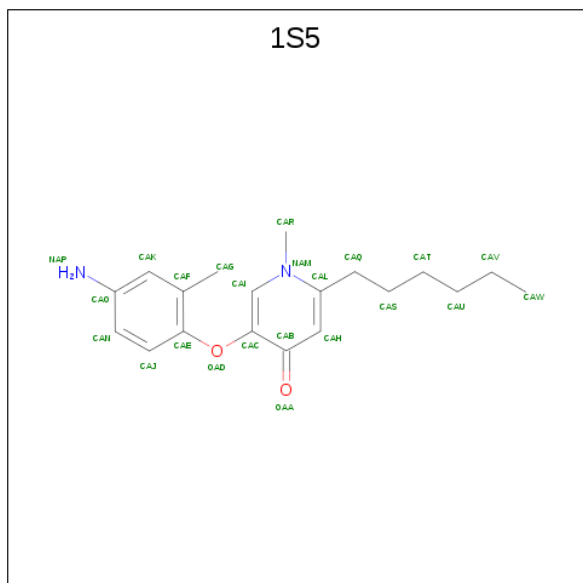
Mol	Chain	Residues	Atoms					ZeroOcc	AltConf
2	A	1	Total 44	C 21	N 7	O 14	P 2	0	0
2	B	1	Total 44	C 21	N 7	O 14	P 2	0	0

Continued on next page...

Continued from previous page...

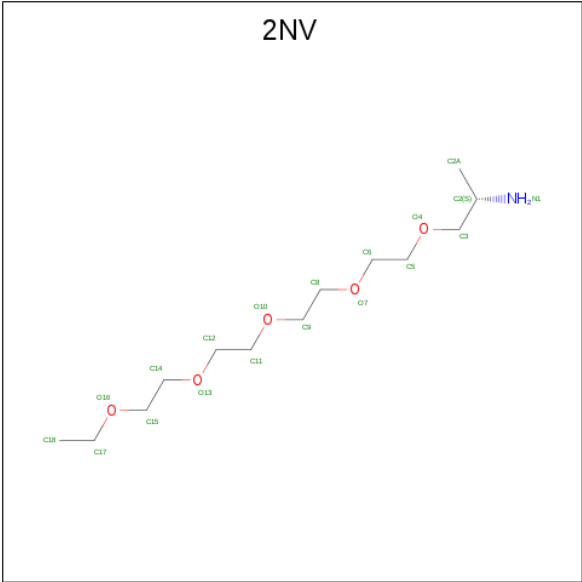
Mol	Chain	Residues	Atoms					ZeroOcc	AltConf
2	C	1	Total	C	N	O	P	0	0
			44	21	7	14	2		
2	D	1	Total	C	N	O	P	0	0
			44	21	7	14	2		

- Molecule 3 is 5-(4-amino-2-methylphenoxy)-2-hexyl-4-hydroxy-1-methylpyridinium (three-letter code: 1S5) (formula: C<sub>19</sub>H<sub>26</sub>N<sub>2</sub>O<sub>2</sub>).



Mol	Chain	Residues	Atoms					ZeroOcc	AltConf
3	A	1	Total	C	N	O		0	0
			23	19	2	2			
3	B	1	Total	C	N	O		0	0
			23	19	2	2			
3	C	1	Total	C	N	O		0	0
			23	19	2	2			
3	D	1	Total	C	N	O		0	0
			23	19	2	2			

- Molecule 4 is 3,6,9,12,15-pentaoxaoctadecan-17-amine (three-letter code: 2NV) (formula: C<sub>13</sub>H<sub>29</sub>NO<sub>5</sub>).



Mol	Chain	Residues	Atoms			ZeroOcc	AltConf
4	B	1	Total	C	O	0	0
			5	4	1		
4	B	1	Total	C	O	0	0
			5	4	1		

- Molecule 5 is water.

Mol	Chain	Residues	Atoms		ZeroOcc	AltConf
5	A	110	Total	O	0	1
			111	111		
5	B	117	Total	O	0	0
			117	117		
5	C	128	Total	O	0	0
			128	128		
5	D	134	Total	O	0	0
			134	134		

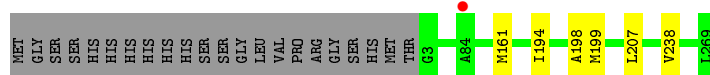


### 3 Residue-property plots [i](#)


These plots are drawn for all protein, RNA and DNA chains in the entry. The first graphic for a chain summarises the proportions of the various outlier classes displayed in the second graphic. The second graphic shows the sequence view annotated by issues in geometry and electron density. Residues are color-coded according to the number of geometric quality criteria for which they contain at least one outlier: green = 0, yellow = 1, orange = 2 and red = 3 or more. A red dot above a residue indicates a poor fit to the electron density ( $RSRZ > 2$ ). Stretches of 2 or more consecutive residues without any outlier are shown as a green connector. Residues present in the sample, but not in the model, are shown in grey.

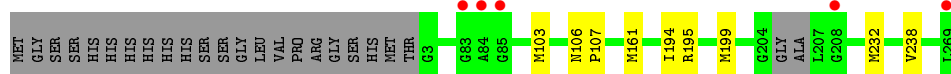
- Molecule 1: Enoyl-[acyl-carrier-protein] reductase [NADH]

Chain A: 



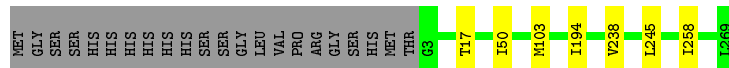
- Molecule 1: Enoyl-[acyl-carrier-protein] reductase [NADH]

Chain B: 



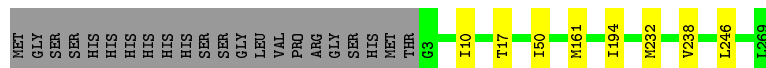
- Molecule 1: Enoyl-[acyl-carrier-protein] reductase [NADH]

Chain C: 



- Molecule 1: Enoyl-[acyl-carrier-protein] reductase [NADH]

Chain D: 



## 4 Data and refinement statistics

Property	Value	Source
Space group	P 21 21 21	Depositor
Cell constants a, b, c, $\alpha$ , $\beta$ , $\gamma$	89.27Å 97.44Å 182.58Å 90.00° 90.00° 90.00°	Depositor
Resolution (Å)	47.07 – 1.84 47.07 – 1.84	Depositor EDS
% Data completeness (in resolution range)	99.4 (47.07-1.84) 99.4 (47.07-1.84)	Depositor EDS
$R_{merge}$	0.11	Depositor
$R_{sym}$	(Not available)	Depositor
$\langle I/\sigma(I) \rangle$ <sup>1</sup>	3.08 (at 1.84Å)	Xtriage
Refinement program	PHENIX	Depositor
R, $R_{free}$	0.158 , 0.177 0.159 , 0.177	Depositor DCC
$R_{free}$ test set	6877 reflections (5.29%)	DCC
Wilson B-factor (Å <sup>2</sup> )	23.6	Xtriage
Anisotropy	0.428	Xtriage
Bulk solvent $k_{sol}$ (e/Å <sup>3</sup> ), $B_{sol}$ (Å <sup>2</sup> )	0.35 , 48.0	EDS
L-test for twinning <sup>2</sup>	$\langle  L  \rangle = 0.49$ , $\langle L^2 \rangle = 0.32$	Xtriage
Estimated twinning fraction	No twinning to report.	Xtriage
$F_o, F_c$ correlation	0.97	EDS
Total number of atoms	8877	wwPDB-VP
Average B, all atoms (Å <sup>2</sup> )	26.0	wwPDB-VP

Xtriage's analysis on translational NCS is as follows: *The largest off-origin peak in the Patterson function is 14.70% of the height of the origin peak. No significant pseudotranslation is detected.*

<sup>1</sup>Intensities estimated from amplitudes.

<sup>2</sup>Theoretical values of  $\langle |L| \rangle$ ,  $\langle L^2 \rangle$  for acentric reflections are 0.5, 0.333 respectively for untwinned datasets, and 0.375, 0.2 for perfectly twinned datasets.

## 5 Model quality [i](#)

### 5.1 Standard geometry [i](#)

Bond lengths and bond angles in the following residue types are not validated in this section: NAD, 1S5, 2NV

The Z score for a bond length (or angle) is the number of standard deviations the observed value is removed from the expected value. A bond length (or angle) with  $|Z| > 5$  is considered an outlier worth inspection. RMSZ is the root-mean-square of all Z scores of the bond lengths (or angles).

Mol	Chain	Bond lengths		Bond angles	
		RMSZ	$\# Z  > 5$	RMSZ	$\# Z  > 5$
1	A	0.34	0/2102	0.52	0/2857
1	B	0.35	0/2034	0.51	0/2763
1	C	0.34	0/2068	0.52	0/2808
1	D	0.34	0/2107	0.51	0/2859
All	All	0.34	0/8311	0.51	0/11287

There are no bond length outliers.

There are no bond angle outliers.

There are no chirality outliers.

There are no planarity outliers.

### 5.2 Too-close contacts [i](#)

In the following table, the Non-H and H(model) columns list the number of non-hydrogen atoms and hydrogen atoms in the chain respectively. The H(added) column lists the number of hydrogen atoms added and optimized by MolProbity. The Clashes column lists the number of clashes within the asymmetric unit, whereas Symm-Clashes lists symmetry related clashes.

Mol	Chain	Non-H	H(model)	H(added)	Clashes	Symm-Clashes
1	A	2055	0	2041	3	0
1	B	1985	0	1991	5	0
1	C	2017	0	2030	4	0
1	D	2052	0	2064	4	0
2	A	44	0	26	0	0
2	B	44	0	26	0	0
2	C	44	0	26	0	0
2	D	44	0	26	0	0
3	A	23	0	26	0	0

*Continued on next page...*

*Continued from previous page...*

Mol	Chain	Non-H	H(model)	H(added)	Clashes	Symm-Clashes
3	B	23	0	26	3	0
3	C	23	0	26	1	0
3	D	23	0	26	1	0
4	B	10	0	12	0	0
5	A	111	0	0	0	0
5	B	117	0	0	0	0
5	C	128	0	0	0	0
5	D	134	0	0	1	0
All	All	8877	0	8346	18	0

The all-atom clashscore is defined as the number of clashes found per 1000 atoms (including hydrogen atoms). The all-atom clashscore for this structure is 1.

All (18) close contacts within the same asymmetric unit are listed below, sorted by their clash magnitude.

Atom-1	Atom-2	Interatomic distance (Å)	Clash overlap (Å)
1:A:194[B]:ILE:HD11	1:A:238:VAL:HG21	1.73	0.69
1:B:194[B]:ILE:HD11	1:B:238:VAL:HG21	1.77	0.67
1:B:195:ARG:HG3	1:B:232:MET:HE3	1.89	0.55
1:B:199:MET:HA	3:B:302:1S5:HARA	1.88	0.55
1:D:17:THR:HA	1:D:50:ILE:HD13	1.89	0.55
1:B:103[B]:MET:SD	3:B:302:1S5:HAN	2.47	0.55
1:D:194[B]:ILE:HD11	1:D:238:VAL:HG21	1.89	0.54
3:B:302:1S5:HAQ	3:B:302:1S5:HAR	1.74	0.47
1:A:198:ALA:O	1:A:199:MET:HB2	2.17	0.44
1:D:232[A]:MET:HG3	5:D:454:HOH:O	2.17	0.44
1:D:10:ILE:HD13	1:D:246:LEU:HD13	2.00	0.43
1:C:103[B]:MET:SD	3:C:301:1S5:HAN	2.59	0.43
1:C:17:THR:HA	1:C:50:ILE:HD13	1.99	0.43
1:A:207:LEU:HD23	1:A:207:LEU:HA	1.87	0.43
1:C:194[B]:ILE:HD11	1:C:238:VAL:HG21	2.01	0.43
3:D:301:1S5:HAQ	3:D:301:1S5:HAR	1.83	0.42
1:B:106:ASN:HA	1:B:107:PRO:HD3	1.95	0.41
1:C:245:LEU:HD11	1:C:258[B]:ILE:HG13	2.03	0.41

There are no symmetry-related clashes.

## 5.3 Torsion angles

### 5.3.1 Protein backbone

In the following table, the Percentiles column shows the percent Ramachandran outliers of the chain as a percentile score with respect to all X-ray entries followed by that with respect to entries of similar resolution.

The Analysed column shows the number of residues for which the backbone conformation was analysed, and the total number of residues.

Mol	Chain	Analysed	Favoured	Allowed	Outliers	Percentiles	
1	A	280/289 (97%)	271 (97%)	9 (3%)	0	100	100
1	B	270/289 (93%)	261 (97%)	9 (3%)	0	100	100
1	C	275/289 (95%)	264 (96%)	11 (4%)	0	100	100
1	D	279/289 (96%)	268 (96%)	11 (4%)	0	100	100
All	All	1104/1156 (96%)	1064 (96%)	40 (4%)	0	100	100

There are no Ramachandran outliers to report.

### 5.3.2 Protein sidechains

In the following table, the Percentiles column shows the percent sidechain outliers of the chain as a percentile score with respect to all X-ray entries followed by that with respect to entries of similar resolution.

The Analysed column shows the number of residues for which the sidechain conformation was analysed, and the total number of residues.

Mol	Chain	Analysed	Rotameric	Outliers	Percentiles	
1	A	202/222 (91%)	201 (100%)	1 (0%)	91	88
1	B	197/222 (89%)	196 (100%)	1 (0%)	91	88
1	C	199/222 (90%)	199 (100%)	0	100	100
1	D	205/222 (92%)	204 (100%)	1 (0%)	91	88
All	All	803/888 (90%)	800 (100%)	3 (0%)	93	91

All (3) residues with a non-rotameric sidechain are listed below:

Mol	Chain	Res	Type
1	A	161	MET
1	B	161	MET
1	D	161	MET

Some sidechains can be flipped to improve hydrogen bonding and reduce clashes. There are no such sidechains identified.

### 5.3.3 RNA ⓘ

There are no RNA molecules in this entry.

## 5.4 Non-standard residues in protein, DNA, RNA chains ⓘ

There are no non-standard protein/DNA/RNA residues in this entry.

## 5.5 Carbohydrates ⓘ

There are no carbohydrates in this entry.

## 5.6 Ligand geometry ⓘ

10 ligands are modelled in this entry.

In the following table, the Counts columns list the number of bonds (or angles) for which Mogul statistics could be retrieved, the number of bonds (or angles) that are observed in the model and the number of bonds (or angles) that are defined in the chemical component dictionary. The Link column lists molecule types, if any, to which the group is linked. The Z score for a bond length (or angle) is the number of standard deviations the observed value is removed from the expected value. A bond length (or angle) with  $|Z| > 2$  is considered an outlier worth inspection. RMSZ is the root-mean-square of all Z scores of the bond lengths (or angles).

Mol	Type	Chain	Res	Link	Bond lengths			Bond angles		
					Counts	RMSZ	# Z  > 2	Counts	RMSZ	# Z  > 2
2	NAD	A	300	-	41,48,48	2.77	16 (39%)	43,73,73	2.41	6 (13%)
3	1S5	A	301	-	23,24,24	2.04	2 (8%)	24,32,32	0.93	2 (8%)
2	NAD	B	301	-	41,48,48	2.77	16 (39%)	43,73,73	2.43	5 (11%)
3	1S5	B	302	-	23,24,24	1.99	2 (8%)	24,32,32	1.03	1 (4%)
4	2NV	B	303	-	4,4,18	0.57	0	3,3,18	0.30	0
4	2NV	B	304	-	4,4,18	0.43	0	3,3,18	0.08	0
2	NAD	C	300	-	41,48,48	2.76	16 (39%)	43,73,73	2.29	5 (11%)
3	1S5	C	301	-	23,24,24	1.92	2 (8%)	24,32,32	0.82	0
2	NAD	D	300	-	41,48,48	2.78	16 (39%)	43,73,73	2.37	5 (11%)
3	1S5	D	301	-	23,24,24	1.95	2 (8%)	24,32,32	1.00	2 (8%)

In the following table, the Chirals column lists the number of chiral outliers, the number of chiral

centers analysed, the number of these observed in the model and the number defined in the chemical component dictionary. Similar counts are reported in the Torsion and Rings columns. '-' means no outliers of that kind were identified.

Mol	Type	Chain	Res	Link	Chirals	Torsions	Rings
2	NAD	A	300	-	-	0/22/62/62	0/5/5/5
3	1S5	A	301	-	-	0/10/10/10	0/2/2/2
2	NAD	B	301	-	-	0/22/62/62	0/5/5/5
3	1S5	B	302	-	-	0/10/10/10	0/2/2/2
4	2NV	B	303	-	-	0/2/2/16	0/0/0/0
4	2NV	B	304	-	-	0/2/2/16	0/0/0/0
2	NAD	C	300	-	-	0/22/62/62	0/5/5/5
3	1S5	C	301	-	-	0/10/10/10	0/2/2/2
2	NAD	D	300	-	-	0/22/62/62	0/5/5/5
3	1S5	D	301	-	-	0/10/10/10	0/2/2/2

All (72) bond length outliers are listed below:

Mol	Chain	Res	Type	Atoms	Z	Observed(Å)	Ideal(Å)
2	B	301	NAD	C2B-C1B	-2.95	1.49	1.53
2	D	300	NAD	C2B-C1B	-2.92	1.49	1.53
2	D	300	NAD	O7N-C7N	-2.65	1.18	1.24
2	A	300	NAD	C2B-C1B	-2.58	1.49	1.53
2	A	300	NAD	O7N-C7N	-2.50	1.19	1.24
2	B	301	NAD	O7N-C7N	-2.49	1.19	1.24
2	C	300	NAD	C2B-C1B	-2.39	1.49	1.53
2	C	300	NAD	O7N-C7N	-2.12	1.19	1.24
3	B	302	1S5	CAO-NAP	2.05	1.45	1.38
2	D	300	NAD	C3D-C4D	2.09	1.58	1.53
3	C	301	1S5	CAO-NAP	2.12	1.45	1.38
2	B	301	NAD	C3D-C4D	2.13	1.58	1.53
3	A	301	1S5	CAO-NAP	2.15	1.46	1.38
2	C	300	NAD	C3D-C4D	2.17	1.58	1.53
3	D	301	1S5	CAO-NAP	2.21	1.46	1.38
2	A	300	NAD	C3D-C4D	2.32	1.59	1.53
2	A	300	NAD	C5N-C4N	2.75	1.44	1.38
2	C	300	NAD	C5N-C4N	2.75	1.44	1.38
2	D	300	NAD	C5N-C4N	2.84	1.44	1.38
2	B	301	NAD	C5N-C4N	2.86	1.44	1.38
2	B	301	NAD	PN-O1N	2.91	1.61	1.50
2	D	300	NAD	C6A-N6A	2.97	1.46	1.34
2	A	300	NAD	C6A-N6A	2.97	1.46	1.34
2	C	300	NAD	C3B-C4B	3.02	1.60	1.53
2	C	300	NAD	C6N-C5N	3.08	1.45	1.38
2	C	300	NAD	C6A-N6A	3.09	1.46	1.34

*Continued on next page...*

*Continued from previous page...*

Mol	Chain	Res	Type	Atoms	Z	Observed(Å)	Ideal(Å)
2	B	301	NAD	C6A-N6A	3.10	1.46	1.34
2	D	300	NAD	C3B-C4B	3.12	1.61	1.53
2	C	300	NAD	PN-O1N	3.14	1.62	1.50
2	A	300	NAD	C6N-C5N	3.22	1.45	1.38
2	A	300	NAD	C3B-C4B	3.23	1.61	1.53
2	B	301	NAD	C3B-C4B	3.28	1.61	1.53
2	D	300	NAD	PN-O1N	3.32	1.63	1.50
2	A	300	NAD	PN-O1N	3.33	1.63	1.50
2	D	300	NAD	C6N-C5N	3.40	1.46	1.38
2	B	301	NAD	C6N-C5N	3.43	1.46	1.38
2	B	301	NAD	PA-O1A	3.52	1.64	1.50
2	A	300	NAD	PA-O1A	3.57	1.64	1.50
2	D	300	NAD	PA-O1A	3.64	1.64	1.50
2	C	300	NAD	PA-O1A	3.65	1.64	1.50
2	A	300	NAD	C2N-C3N	4.03	1.45	1.39
2	C	300	NAD	C2A-N1A	4.28	1.41	1.33
2	B	301	NAD	C2N-C3N	4.30	1.45	1.39
2	B	301	NAD	C2A-N1A	4.32	1.42	1.33
2	D	300	NAD	C2A-N1A	4.32	1.42	1.33
2	A	300	NAD	C2A-N1A	4.41	1.42	1.33
2	D	300	NAD	C2N-C3N	4.65	1.46	1.39
2	C	300	NAD	C2N-C3N	4.66	1.46	1.39
2	A	300	NAD	C6N-N1N	4.98	1.48	1.35
2	C	300	NAD	C6N-N1N	5.06	1.48	1.35
2	B	301	NAD	C8A-N7A	5.17	1.44	1.34
2	D	300	NAD	C8A-N7A	5.20	1.44	1.34
2	D	300	NAD	C6N-N1N	5.22	1.48	1.35
2	B	301	NAD	C6N-N1N	5.24	1.49	1.35
2	A	300	NAD	C8A-N7A	5.26	1.44	1.34
2	C	300	NAD	C8A-N7A	5.59	1.45	1.34
2	D	300	NAD	C2A-N3A	5.62	1.41	1.32
2	C	300	NAD	C2A-N3A	5.69	1.41	1.32
2	B	301	NAD	C2A-N3A	5.88	1.41	1.32
2	A	300	NAD	C2A-N3A	5.93	1.42	1.32
2	D	300	NAD	C4N-C3N	6.11	1.49	1.39
2	B	301	NAD	C7N-N7N	6.26	1.45	1.33
2	C	300	NAD	C4N-C3N	6.33	1.49	1.39
2	A	300	NAD	C4N-C3N	6.43	1.49	1.39
2	B	301	NAD	C4N-C3N	6.55	1.50	1.39
2	C	300	NAD	C7N-N7N	6.65	1.46	1.33
2	A	300	NAD	C7N-N7N	6.70	1.46	1.33
2	D	300	NAD	C7N-N7N	6.75	1.46	1.33

*Continued on next page...*



*Continued from previous page...*

Mol	Chain	Res	Type	Atoms	Z	Observed(Å)	Ideal(Å)
3	D	301	1S5	OAA-CAB	8.43	1.38	1.23
3	C	301	1S5	OAA-CAB	8.48	1.38	1.23
3	B	302	1S5	OAA-CAB	8.78	1.39	1.23
3	A	301	1S5	OAA-CAB	8.93	1.39	1.23

All (26) bond angle outliers are listed below:

Mol	Chain	Res	Type	Atoms	Z	Observed(°)	Ideal(°)
2	A	300	NAD	N3A-C2A-N1A	-11.11	119.18	128.86
2	C	300	NAD	N3A-C2A-N1A	-10.89	119.37	128.86
2	D	300	NAD	N3A-C2A-N1A	-10.79	119.46	128.86
2	B	301	NAD	N3A-C2A-N1A	-10.77	119.48	128.86
2	D	300	NAD	C4B-O4B-C1B	-8.25	100.98	109.77
2	B	301	NAD	C4B-O4B-C1B	-8.22	101.02	109.77
2	A	300	NAD	C4B-O4B-C1B	-7.58	101.70	109.77
2	C	300	NAD	C4B-O4B-C1B	-6.64	102.70	109.77
2	A	300	NAD	C3N-C2N-N1N	-3.79	116.61	120.43
2	C	300	NAD	C3N-C2N-N1N	-3.47	116.93	120.43
2	B	301	NAD	C3N-C2N-N1N	-3.37	117.04	120.43
2	D	300	NAD	C3N-C2N-N1N	-2.78	117.63	120.43
2	C	300	NAD	C1B-N9A-C4A	-2.76	121.87	126.64
2	A	300	NAD	C1B-N9A-C4A	-2.68	122.01	126.64
2	D	300	NAD	C1B-N9A-C4A	-2.55	122.23	126.64
2	B	301	NAD	C1B-N9A-C4A	-2.27	122.72	126.64
3	A	301	1S5	CAI-NAM-CAL	-2.11	119.66	121.79
3	D	301	1S5	CAI-NAM-CAL	-2.01	119.76	121.79
3	B	302	1S5	CAK-CAF-CAE	2.30	120.77	117.82
3	A	301	1S5	CAK-CAF-CAE	2.30	120.78	117.82
2	A	300	NAD	O3B-C3B-C4B	2.45	118.25	111.09
3	D	301	1S5	CAK-CAF-CAE	2.49	121.02	117.82
2	C	300	NAD	C2N-C3N-C4N	3.56	122.33	118.26
2	D	300	NAD	C2N-C3N-C4N	3.73	122.52	118.26
2	A	300	NAD	C2N-C3N-C4N	4.13	122.98	118.26
2	B	301	NAD	C2N-C3N-C4N	4.78	123.72	118.26

There are no chirality outliers.

There are no torsion outliers.

There are no ring outliers.

3 monomers are involved in 5 short contacts:

Mol	Chain	Res	Type	Clashes	Symm-Clashes
3	B	302	1S5	3	0
3	C	301	1S5	1	0
3	D	301	1S5	1	0

## 5.7 Other polymers [i](#)

There are no such residues in this entry.

## 5.8 Polymer linkage issues [i](#)

There are no chain breaks in this entry.

## 6 Fit of model and data [i](#)

### 6.1 Protein, DNA and RNA chains [i](#)

In the following table, the column labelled ‘#RSRZ> 2’ contains the number (and percentage) of RSRZ outliers, followed by percent RSRZ outliers for the chain as percentile scores relative to all X-ray entries and entries of similar resolution. The OWAB column contains the minimum, median, 95<sup>th</sup> percentile and maximum values of the occupancy-weighted average B-factor per residue. The column labelled ‘Q< 0.9’ lists the number of (and percentage) of residues with an average occupancy less than 0.9.

Mol	Chain	Analysed	<RSRZ>	#RSRZ>2	OWAB(Å <sup>2</sup> )	Q<0.9
1	A	267/289 (92%)	-0.38	1 (0%) 92 91	15, 25, 42, 56	0
1	B	265/289 (91%)	-0.37	5 (1%) 67 65	15, 25, 44, 58	1 (0%)
1	C	267/289 (92%)	-0.43	0 100 100	15, 24, 39, 48	0
1	D	267/289 (92%)	-0.38	0 100 100	15, 25, 40, 51	0
All	All	1066/1156 (92%)	-0.39	6 (0%) 89 89	15, 25, 41, 58	1 (0%)

All (6) RSRZ outliers are listed below:

Mol	Chain	Res	Type	RSRZ
1	B	208	GLY	3.3
1	B	84	ALA	2.5
1	A	84	ALA	2.4
1	B	83	GLY	2.2
1	B	269	LEU	2.2
1	B	85	GLY	2.2

### 6.2 Non-standard residues in protein, DNA, RNA chains [i](#)

There are no non-standard protein/DNA/RNA residues in this entry.

### 6.3 Carbohydrates [i](#)

There are no carbohydrates in this entry.

### 6.4 Ligands [i](#)

In the following table, the Atoms column lists the number of modelled atoms in the group and the number defined in the chemical component dictionary. LLDF column lists the quality of electron

density of the group with respect to its neighbouring residues in protein, DNA or RNA chains. The B-factors column lists the minimum, median, 95<sup>th</sup> percentile and maximum values of B factors of atoms in the group. The column labelled 'Q< 0.9' lists the number of atoms with occupancy less than 0.9.

Mol	Type	Chain	Res	Atoms	RSCC	RSR	LLDF	B-factors(Å <sup>2</sup> )	Q<0.9
4	2NV	B	304	5/19	0.83	0.14	5.04	54,55,60,62	0
3	1S5	C	301	23/23	0.97	0.09	0.92	17,20,25,29	0
3	1S5	B	302	23/23	0.97	0.10	0.92	17,22,26,39	0
3	1S5	D	301	23/23	0.97	0.10	0.53	17,20,25,31	0
3	1S5	A	301	23/23	0.96	0.10	0.35	19,23,32,40	0
2	NAD	C	300	44/44	0.98	0.08	0.03	15,20,25,27	0
2	NAD	B	301	44/44	0.98	0.08	-0.03	14,20,26,26	0
2	NAD	D	300	44/44	0.98	0.07	-0.18	16,21,25,26	0
2	NAD	A	300	44/44	0.98	0.08	-0.25	16,20,25,29	0
4	2NV	B	303	5/19	0.71	0.24	-	49,54,55,58	0

## 6.5 Other polymers

There are no such residues in this entry.