



Full wwPDB X-ray Structure Validation Report ⓘ

Feb 13, 2017 – 12:33 am GMT

PDB ID : 2P3O
Title : Crystal Structure of Dengue Methyltransferase in Complex with 7MeGpppA and S-Adenosyl-L-homocysteine
Authors : Egloff, M.P.; Marseilles Structural Genomics Program @ AFMB (MSGP)
Deposited on : 2007-03-09
Resolution : 2.76 Å(reported)

This is a Full wwPDB X-ray Structure Validation Report for a publicly released PDB entry.

We welcome your comments at validation@mail.wwpdb.org

A user guide is available at

<http://wwpdb.org/validation/2016/XrayValidationReportHelp>

with specific help available everywhere you see the ⓘ symbol.

The following versions of software and data (see [references ⓘ](#)) were used in the production of this report:

MolProbity : 4.02b-467
Mogul : 1.7.2 (RC1), CSD as538be (2017)
Xtriage (Phenix) : 1.9-1692
EDS : trunk28620
Percentile statistics : 20161228.v01 (using entries in the PDB archive December 28th 2016)
Refmac : 5.8.0135
CCP4 : 6.5.0
Ideal geometry (proteins) : Engh & Huber (2001)
Ideal geometry (DNA, RNA) : Parkinson et al. (1996)
Validation Pipeline (wwPDB-VP) : recalc28949

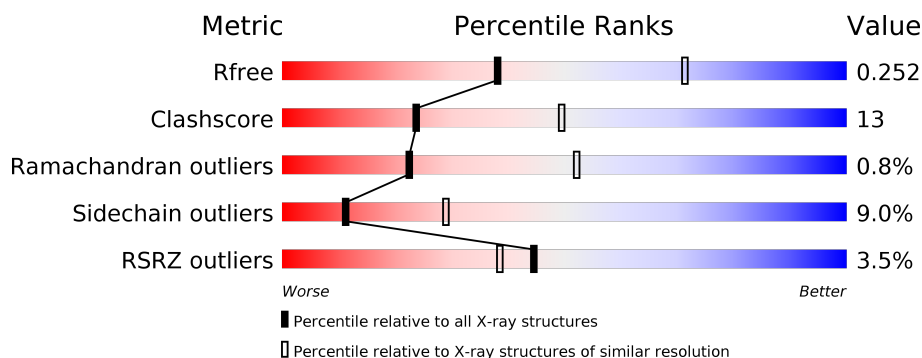
1 Overall quality at a glance

The following experimental techniques were used to determine the structure:

X-RAY DIFFRACTION

The reported resolution of this entry is 2.76 Å.

Percentile scores (ranging between 0-100) for global validation metrics of the entry are shown in the following graphic. The table shows the number of entries on which the scores are based.



Metric	Whole archive (#Entries)	Similar resolution (#Entries, resolution range(Å))
R_{free}	100719	3666 (2.80-2.72)
Clashscore	112137	4174 (2.80-2.72)
Ramachandran outliers	110173	4103 (2.80-2.72)
Sidechain outliers	110143	4106 (2.80-2.72)
RSRZ outliers	101464	3697 (2.80-2.72)

The table below summarises the geometric issues observed across the polymeric chains and their fit to the electron density. The red, orange, yellow and green segments on the lower bar indicate the fraction of residues that contain outliers for ≥ 3 , 2, 1 and 0 types of geometric quality criteria. A grey segment represents the fraction of residues that are not modelled. The numeric value for each fraction is indicated below the corresponding segment, with a dot representing fractions $\leq 5\%$. The upper red bar (where present) indicates the fraction of residues that have poor fit to the electron density. The numeric value is given above the bar.

Mol	Chain	Length	Quality of chain
1	A	305	<div> <div>3%</div> <div> <div></div> <div>64%</div> <div>17%</div> <div>•</div> <div>15%</div> </div> </div>

The following table lists non-polymeric compounds, carbohydrate monomers and non-standard residues in protein, DNA, RNA chains that are outliers for geometric or electron-density-fit criteria:

Mol	Type	Chain	Res	Chirality	Geometry	Clashes	Electron density
2	SO4	A	1004	-	-	X	-

2 Entry composition

There are 6 unique types of molecules in this entry. The entry contains 2184 atoms, of which 0 are hydrogens and 0 are deuteriums.

In the tables below, the ZeroOcc column contains the number of atoms modelled with zero occupancy, the AltConf column contains the number of residues with at least one atom in alternate conformation and the Trace column contains the number of residues modelled with at most 2 atoms.

- Molecule 1 is a protein called type II methyltransferase.

Mol	Chain	Residues	Atoms					ZeroOcc	AltConf	Trace
1	A	258	Total	C	N	O	S	0	0	0
			2022	1263	371	376	12			

There are 19 discrepancies between the modelled and reference sequences:

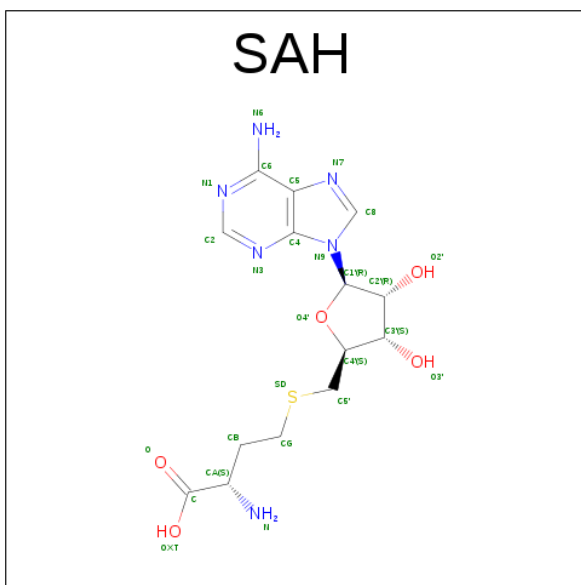
Chain	Residue	Modelled	Actual	Comment	Reference
A	-8	MET	-	EXPRESSION TAG	UNP Q9WLZ8
A	-7	ARG	-	EXPRESSION TAG	UNP Q9WLZ8
A	-6	GLY	-	EXPRESSION TAG	UNP Q9WLZ8
A	-5	SER	-	EXPRESSION TAG	UNP Q9WLZ8
A	-4	HIS	-	EXPRESSION TAG	UNP Q9WLZ8
A	-3	HIS	-	EXPRESSION TAG	UNP Q9WLZ8
A	-2	HIS	-	EXPRESSION TAG	UNP Q9WLZ8
A	-1	HIS	-	EXPRESSION TAG	UNP Q9WLZ8
A	0	HIS	-	EXPRESSION TAG	UNP Q9WLZ8
A	1	HIS	-	EXPRESSION TAG	UNP Q9WLZ8
A	2	GLY	-	EXPRESSION TAG	UNP Q9WLZ8
A	3	SER	-	EXPRESSION TAG	UNP Q9WLZ8
A	70	LEU	MET	SEE REMARK 999	UNP Q9WLZ8
A	139	ARG	LYS	SEE REMARK 999	UNP Q9WLZ8
A	173	SER	ASN	SEE REMARK 999	UNP Q9WLZ8
A	180	VAL	ILE	SEE REMARK 999	UNP Q9WLZ8
A	188	SER	PRO	SEE REMARK 999	UNP Q9WLZ8
A	201	HIS	TYR	SEE REMARK 999	UNP Q9WLZ8
A	271	THR	ILE	SEE REMARK 999	UNP Q9WLZ8

- Molecule 2 is SULFATE ION (three-letter code: SO4) (formula: O₄S).



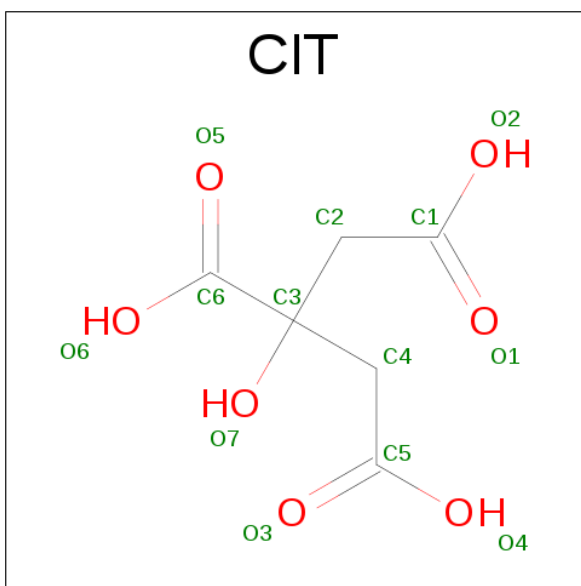
Mol	Chain	Residues	Atoms			ZeroOcc	AltConf
2	A	1	Total	O	S	0	0
			5	4	1		
2	A	1	Total	O	S	0	0
			5	4	1		
2	A	1	Total	O	S	0	0
			5	4	1		
2	A	1	Total	O	S	0	0
			5	4	1		
2	A	1	Total	O	S	0	0
			5	4	1		
2	A	1	Total	O	S	0	0
			5	4	1		
2	A	1	Total	O	S	0	0
			5	4	1		

- Molecule 3 is S-ADENOSYL-L-HOMOCYSTEINE (three-letter code: SAH) (formula: $C_{14}H_{20}N_6O_5S$).



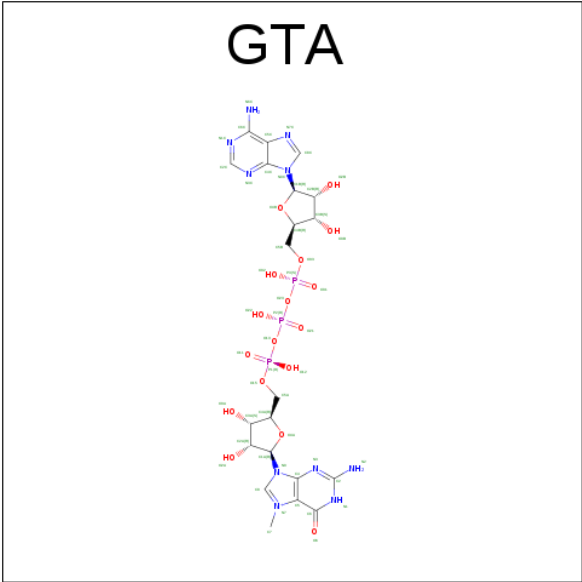
Mol	Chain	Residues	Atoms					ZeroOcc	AltConf
3	A	1	Total	C	N	O	S	0	0
			26	14	6	5	1		

- Molecule 4 is CITRIC ACID (three-letter code: CIT) (formula: $C_6H_8O_7$).



Mol	Chain	Residues	Atoms			ZeroOcc	AltConf
4	A	1	Total	C	O	0	0
			13	6	7		

- Molecule 5 is P1-7-METHYLGUANOSINE-P3-ADENOSINE-5',5'-TRIPHOSPHATE (three-letter code: GTA) (formula: $C_{21}H_{30}N_{10}O_{17}P_3$).



Mol	Chain	Residues	Atoms					ZeroOcc	AltConf
			Total	C	N	O	P		
5	A	1	51	21	10	17	3	0	0

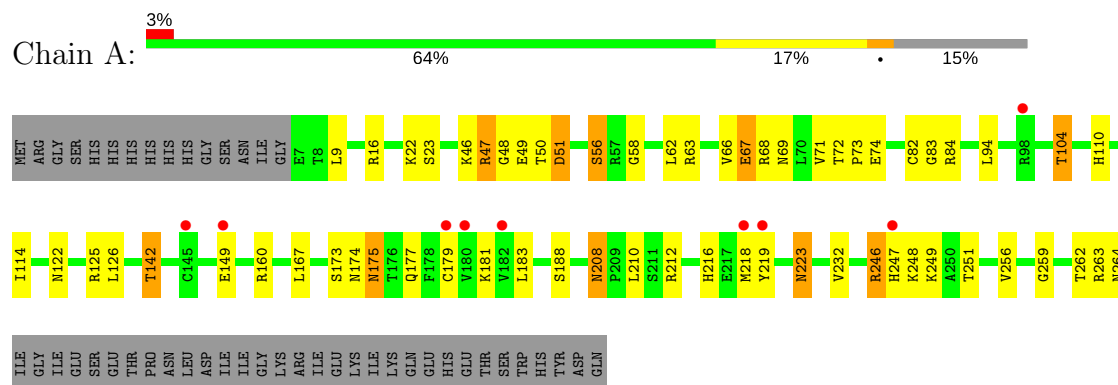
- Molecule 6 is water.

Mol	Chain	Residues	Atoms	ZeroOcc	AltConf
6	A	27	Total	0	0
			27 O		

3 Residue-property plots [i](#)

These plots are drawn for all protein, RNA and DNA chains in the entry. The first graphic for a chain summarises the proportions of the various outlier classes displayed in the second graphic. The second graphic shows the sequence view annotated by issues in geometry and electron density. Residues are color-coded according to the number of geometric quality criteria for which they contain at least one outlier: green = 0, yellow = 1, orange = 2 and red = 3 or more. A red dot above a residue indicates a poor fit to the electron density ($RSRZ > 2$). Stretches of 2 or more consecutive residues without any outlier are shown as a green connector. Residues present in the sample, but not in the model, are shown in grey.

- Molecule 1: type II methyltransferase



4 Data and refinement statistics

Property	Value	Source
Space group	P 31 2 1	Depositor
Cell constants a, b, c, α , β , γ	111.56Å 111.56Å 56.33Å 90.00° 90.00° 120.00°	Depositor
Resolution (Å)	27.96 – 2.76 27.96 – 2.76	Depositor EDS
% Data completeness (in resolution range)	98.1 (27.96-2.76) 93.8 (27.96-2.76)	Depositor EDS
R_{merge}	(Not available)	Depositor
R_{sym}	0.08	Depositor
$\langle I/\sigma(I) \rangle$ ¹	2.31 (at 2.76Å)	Xtriage
Refinement program	REFMAC 5.2	Depositor
R, R_{free}	0.195 , 0.244 0.199 , 0.252	Depositor DCC
R_{free} test set	609 reflections (6.47%)	DCC
Wilson B-factor (Å ²)	70.2	Xtriage
Anisotropy	0.301	Xtriage
Bulk solvent k_{sol} (e/Å ³), B_{sol} (Å ²)	0.33 , 52.1	EDS
L-test for twinning ²	$\langle L \rangle = 0.48$, $\langle L^2 \rangle = 0.32$	Xtriage
Estimated twinning fraction	0.042 for -h,-k,l	Xtriage
F_o, F_c correlation	0.95	EDS
Total number of atoms	2184	wwPDB-VP
Average B, all atoms (Å ²)	65.0	wwPDB-VP

Xtriage's analysis on translational NCS is as follows: *The largest off-origin peak in the Patterson function is 4.65% of the height of the origin peak. No significant pseudotranslation is detected.*

¹Intensities estimated from amplitudes.

²Theoretical values of $\langle |L| \rangle$, $\langle L^2 \rangle$ for acentric reflections are 0.5, 0.333 respectively for untwinned datasets, and 0.375, 0.2 for perfectly twinned datasets.

5 Model quality [i](#)

5.1 Standard geometry [i](#)

Bond lengths and bond angles in the following residue types are not validated in this section: GTA, SAH, SO4, CIT

The Z score for a bond length (or angle) is the number of standard deviations the observed value is removed from the expected value. A bond length (or angle) with $|Z| > 5$ is considered an outlier worth inspection. RMSZ is the root-mean-square of all Z scores of the bond lengths (or angles).

Mol	Chain	Bond lengths		Bond angles	
		RMSZ	$\# Z > 5$	RMSZ	$\# Z > 5$
1	A	0.59	0/2063	0.67	0/2785

Chiral center outliers are detected by calculating the chiral volume of a chiral center and verifying if the center is modelled as a planar moiety or with the opposite hand. A planarity outlier is detected by checking planarity of atoms in a peptide group, atoms in a mainchain group or atoms of a sidechain that are expected to be planar.

Mol	Chain	#Chirality outliers	#Planarity outliers
1	A	0	1

There are no bond length outliers.

There are no bond angle outliers.

There are no chirality outliers.

All (1) planarity outliers are listed below:

Mol	Chain	Res	Type	Group
1	A	46	LYS	Peptide

5.2 Too-close contacts [i](#)

In the following table, the Non-H and H(model) columns list the number of non-hydrogen atoms and hydrogen atoms in the chain respectively. The H(added) column lists the number of hydrogen atoms added and optimized by MolProbity. The Clashes column lists the number of clashes within the asymmetric unit, whereas Symm-Clashes lists symmetry related clashes.

Mol	Chain	Non-H	H(model)	H(added)	Clashes	Symm-Clashes
1	A	2022	0	2015	53	0
2	A	45	0	0	4	0

Continued on next page...

Continued from previous page...

Mol	Chain	Non-H	H(model)	H(added)	Clashes	Symm-Clashes
3	A	26	0	19	0	0
4	A	13	0	5	0	0
5	A	51	0	27	0	0
6	A	27	0	0	0	0
All	All	2184	0	2066	53	0

The all-atom clashscore is defined as the number of clashes found per 1000 atoms (including hydrogen atoms). The all-atom clashscore for this structure is 13.

All (53) close contacts within the same asymmetric unit are listed below, sorted by their clash magnitude.

Atom-1	Atom-2	Interatomic distance (Å)	Clash overlap (Å)
1:A:72:THR:H	1:A:177:GLN:HE21	1.15	0.95
1:A:83:GLY:H	1:A:104:THR:HG21	1.38	0.87
1:A:263:ARG:O	1:A:264:ASN:HB2	1.79	0.83
1:A:110:HIS:HE1	2:A:1004:SO4:O2	1.67	0.77
1:A:72:THR:H	1:A:177:GLN:NE2	1.83	0.77
1:A:208:ASN:HD22	1:A:210:LEU:H	1.33	0.74
1:A:122:ASN:HD21	1:A:263:ARG:H	1.36	0.72
1:A:66:VAL:C	1:A:68:ARG:H	1.94	0.70
1:A:74:GLU:H	1:A:142:THR:HG21	1.60	0.67
1:A:83:GLY:H	1:A:104:THR:CG2	2.06	0.66
1:A:246:ARG:HH21	1:A:246:ARG:HG3	1.61	0.65
1:A:66:VAL:O	1:A:68:ARG:N	2.30	0.64
1:A:208:ASN:ND2	1:A:210:LEU:H	1.96	0.64
1:A:71:VAL:HG21	1:A:179:CYS:HB2	1.79	0.64
1:A:263:ARG:O	1:A:264:ASN:CB	2.47	0.63
1:A:73:PRO:HG2	1:A:94:LEU:CD1	2.30	0.62
1:A:149:GLU:O	1:A:160:ARG:NH2	2.33	0.62
1:A:73:PRO:HA	1:A:142:THR:HG21	1.82	0.61
1:A:174:ASN:OD1	1:A:175:ASN:N	2.35	0.60
1:A:68:ARG:HG3	1:A:68:ARG:HH11	1.68	0.58
1:A:56:SER:HB3	1:A:58:GLY:H	1.69	0.58
1:A:74:GLU:N	1:A:142:THR:HG21	2.18	0.57
1:A:67:GLU:OE2	1:A:68:ARG:NH1	2.31	0.57
1:A:68:ARG:NH2	2:A:1002:SO4:O2	2.38	0.57
1:A:122:ASN:ND2	1:A:262:THR:HA	2.20	0.56
1:A:66:VAL:C	1:A:68:ARG:N	2.59	0.56
1:A:48:GLY:O	1:A:50:THR:HG23	2.07	0.55
1:A:110:HIS:CE1	2:A:1004:SO4:O2	2.56	0.54
1:A:82:CYS:N	1:A:104:THR:HG23	2.23	0.54

Continued on next page...

Continued from previous page...

Atom-1	Atom-2	Interatomic distance (Å)	Clash overlap (Å)
1:A:110:HIS:CD2	2:A:1006:SO4:O4	2.62	0.53
1:A:122:ASN:HD21	1:A:263:ARG:N	2.05	0.52
1:A:216:HIS:O	1:A:216:HIS:ND1	2.42	0.52
1:A:83:GLY:N	1:A:104:THR:HG21	2.16	0.52
1:A:63:ARG:CZ	1:A:256:VAL:HG22	2.42	0.50
1:A:51:ASP:O	1:A:259:GLY:O	2.29	0.50
1:A:183:LEU:HD22	1:A:183:LEU:O	2.14	0.48
1:A:68:ARG:CG	1:A:68:ARG:HH11	2.24	0.48
1:A:82:CYS:H	1:A:104:THR:HG23	1.79	0.47
1:A:73:PRO:HG2	1:A:94:LEU:HD12	1.94	0.47
1:A:212:ARG:N	1:A:212:ARG:HD2	2.29	0.46
1:A:74:GLU:H	1:A:142:THR:CG2	2.27	0.45
1:A:68:ARG:O	1:A:69:ASN:HB2	2.16	0.45
1:A:73:PRO:HG2	1:A:94:LEU:HD13	1.98	0.45
1:A:181:LYS:HB2	1:A:219:TYR:CE2	2.53	0.43
1:A:68:ARG:NH1	1:A:68:ARG:CG	2.81	0.42
1:A:142:THR:HA	1:A:177:GLN:O	2.20	0.41
1:A:218:MET:HE1	1:A:232:VAL:HA	2.01	0.41
1:A:47:ARG:O	1:A:49:GLU:N	2.53	0.41
1:A:247:HIS:O	1:A:249:LYS:N	2.53	0.41
1:A:122:ASN:ND2	1:A:262:THR:CA	2.84	0.41
1:A:122:ASN:ND2	1:A:262:THR:HB	2.36	0.41
1:A:177:GLN:HE22	1:A:223:ASN:HD21	1.69	0.40
1:A:84:ARG:HD3	1:A:114:ILE:HD12	2.02	0.40

There are no symmetry-related clashes.

5.3 Torsion angles [i](#)

5.3.1 Protein backbone [i](#)

In the following table, the Percentiles column shows the percent Ramachandran outliers of the chain as a percentile score with respect to all X-ray entries followed by that with respect to entries of similar resolution.

The Analysed column shows the number of residues for which the backbone conformation was analysed, and the total number of residues.

Mol	Chain	Analysed	Favoured	Allowed	Outliers	Percentiles
1	A	256/305 (84%)	238 (93%)	16 (6%)	2 (1%)	22 52

All (2) Ramachandran outliers are listed below:

Mol	Chain	Res	Type
1	A	67	GLU
1	A	248	LYS

5.3.2 Protein sidechains ⓘ

In the following table, the Percentiles column shows the percent sidechain outliers of the chain as a percentile score with respect to all X-ray entries followed by that with respect to entries of similar resolution.

The Analysed column shows the number of residues for which the sidechain conformation was analysed, and the total number of residues.

Mol	Chain	Analysed	Rotameric	Outliers	Percentiles	
1	A	222/265 (84%)	202 (91%)	20 (9%)	11	29

All (20) residues with a non-rotameric sidechain are listed below:

Mol	Chain	Res	Type
1	A	9	LEU
1	A	16	ARG
1	A	22	LYS
1	A	23	SER
1	A	47	ARG
1	A	51	ASP
1	A	56	SER
1	A	62	LEU
1	A	104	THR
1	A	125	ARG
1	A	126	LEU
1	A	142	THR
1	A	167	LEU
1	A	173	SER
1	A	175	ASN
1	A	188	SER
1	A	208	ASN
1	A	223	ASN
1	A	246	ARG
1	A	251	THR

Some sidechains can be flipped to improve hydrogen bonding and reduce clashes. All (7) such sidechains are listed below:

Mol	Chain	Res	Type
1	A	34	GLN
1	A	110	HIS
1	A	122	ASN
1	A	175	ASN
1	A	177	GLN
1	A	208	ASN
1	A	233	ASN

5.3.3 RNA ⓘ

There are no RNA molecules in this entry.

5.4 Non-standard residues in protein, DNA, RNA chains ⓘ

There are no non-standard protein/DNA/RNA residues in this entry.

5.5 Carbohydrates ⓘ

There are no carbohydrates in this entry.

5.6 Ligand geometry ⓘ

12 ligands are modelled in this entry.

In the following table, the Counts columns list the number of bonds (or angles) for which Mogul statistics could be retrieved, the number of bonds (or angles) that are observed in the model and the number of bonds (or angles) that are defined in the chemical component dictionary. The Link column lists molecule types, if any, to which the group is linked. The Z score for a bond length (or angle) is the number of standard deviations the observed value is removed from the expected value. A bond length (or angle) with $|Z| > 2$ is considered an outlier worth inspection. RMSZ is the root-mean-square of all Z scores of the bond lengths (or angles).

Mol	Type	Chain	Res	Link	Bond lengths			Bond angles		
					Counts	RMSZ	$\# Z > 2$	Counts	RMSZ	$\# Z > 2$
3	SAH	A	1001	-	20,28,28	1.21	2 (10%)	20,40,40	2.35	1 (5%)
2	SO4	A	1002	-	4,4,4	0.27	0	6,6,6	0.43	0
2	SO4	A	1003	-	4,4,4	0.20	0	6,6,6	0.43	0
2	SO4	A	1004	-	4,4,4	0.29	0	6,6,6	0.39	0
2	SO4	A	1005	-	4,4,4	0.17	0	6,6,6	0.19	0
2	SO4	A	1006	-	4,4,4	0.19	0	6,6,6	0.29	0
2	SO4	A	1007	-	4,4,4	0.21	0	6,6,6	0.19	0
2	SO4	A	1008	-	4,4,4	0.31	0	6,6,6	0.21	0

Mol	Type	Chain	Res	Link	Bond lengths			Bond angles		
					Counts	RMSZ	# Z > 2	Counts	RMSZ	# Z > 2
2	SO4	A	1009	-	4,4,4	0.22	0	6,6,6	0.12	0
2	SO4	A	1010	-	4,4,4	0.23	0	6,6,6	0.20	0
4	CIT	A	1011	-	3,12,12	1.07	0	3,17,17	0.93	0
5	GTA	A	1012	-	45,56,56	1.01	3 (6%)	43,88,88	2.08	9 (20%)

In the following table, the Chirals column lists the number of chiral outliers, the number of chiral centers analysed, the number of these observed in the model and the number defined in the chemical component dictionary. Similar counts are reported in the Torsion and Rings columns. '-' means no outliers of that kind were identified.

Mol	Type	Chain	Res	Link	Chirals	Torsions	Rings
3	SAH	A	1001	-	-	0/7/31/31	0/3/3/3
2	SO4	A	1002	-	-	0/0/0/0	0/0/0/0
2	SO4	A	1003	-	-	0/0/0/0	0/0/0/0
2	SO4	A	1004	-	-	0/0/0/0	0/0/0/0
2	SO4	A	1005	-	-	0/0/0/0	0/0/0/0
2	SO4	A	1006	-	-	0/0/0/0	0/0/0/0
2	SO4	A	1007	-	-	0/0/0/0	0/0/0/0
2	SO4	A	1008	-	-	0/0/0/0	0/0/0/0
2	SO4	A	1009	-	-	0/0/0/0	0/0/0/0
2	SO4	A	1010	-	-	0/0/0/0	0/0/0/0
4	CIT	A	1011	-	-	0/6/16/16	0/0/0/0
5	GTA	A	1012	-	-	0/24/64/64	0/6/6/6

All (5) bond length outliers are listed below:

Mol	Chain	Res	Type	Atoms	Z	Observed(Å)	Ideal(Å)
5	A	1012	GTA	C6C-N6C	-2.22	1.25	1.34
5	A	1012	GTA	C6-N1	2.25	1.37	1.33
3	A	1001	SAH	C2-N1	2.86	1.39	1.33
5	A	1012	GTA	C2C-N3C	2.99	1.37	1.32
3	A	1001	SAH	C2-N3	3.87	1.38	1.32

All (10) bond angle outliers are listed below:

Mol	Chain	Res	Type	Atoms	Z	Observed(°)	Ideal(°)
3	A	1001	SAH	N3-C2-N1	-9.82	120.30	128.86
5	A	1012	GTA	N3C-C2C-N1C	-7.07	122.70	128.86
5	A	1012	GTA	N3-C2-N1	-4.89	120.32	127.46
5	A	1012	GTA	C6-C5-C4	-3.38	117.49	120.84
5	A	1012	GTA	C1A-N9-C4	-2.55	122.22	126.64
5	A	1012	GTA	C5-C6-N1	-2.34	120.15	123.48

Continued on next page...

Continued from previous page...

Mol	Chain	Res	Type	Atoms	Z	Observed($^{\circ}$)	Ideal($^{\circ}$)
5	A	1012	GTA	O22-P2-O21	2.05	122.89	112.28
5	A	1012	GTA	C6-N1-C2	2.72	119.98	116.06
5	A	1012	GTA	N2-C2-N1	2.98	122.00	117.24
5	A	1012	GTA	C2-N3-C4	5.75	121.87	115.16

There are no chirality outliers.

There are no torsion outliers.

There are no ring outliers.

3 monomers are involved in 4 short contacts:

Mol	Chain	Res	Type	Clashes	Symm-Clashes
2	A	1002	SO4	1	0
2	A	1004	SO4	2	0
2	A	1006	SO4	1	0

5.7 Other polymers [i](#)

There are no such residues in this entry.

5.8 Polymer linkage issues [i](#)

There are no chain breaks in this entry.

6 Fit of model and data [i](#)

6.1 Protein, DNA and RNA chains [i](#)

In the following table, the column labelled ‘#RSRZ> 2’ contains the number (and percentage) of RSRZ outliers, followed by percent RSRZ outliers for the chain as percentile scores relative to all X-ray entries and entries of similar resolution. The OWAB column contains the minimum, median, 95th percentile and maximum values of the occupancy-weighted average B-factor per residue. The column labelled ‘Q< 0.9’ lists the number of (and percentage) of residues with an average occupancy less than 0.9.

Mol	Chain	Analysed	<RSRZ>	#RSRZ>2	OWAB(Å ²)	Q<0.9
1	A	258/305 (84%)	0.07	9 (3%) 44 38	54, 63, 76, 97	0

All (9) RSRZ outliers are listed below:

Mol	Chain	Res	Type	RSRZ
1	A	98	ARG	3.3
1	A	145	CYS	3.1
1	A	179	CYS	2.6
1	A	149	GLU	2.6
1	A	180	VAL	2.6
1	A	182	VAL	2.5
1	A	218	MET	2.4
1	A	247	HIS	2.2
1	A	219	TYR	2.1

6.2 Non-standard residues in protein, DNA, RNA chains [i](#)

There are no non-standard protein/DNA/RNA residues in this entry.

6.3 Carbohydrates [i](#)

There are no carbohydrates in this entry.

6.4 Ligands [i](#)

In the following table, the Atoms column lists the number of modelled atoms in the group and the number defined in the chemical component dictionary. LLDF column lists the quality of electron density of the group with respect to its neighbouring residues in protein, DNA or RNA chains. The B-factors column lists the minimum, median, 95th percentile and maximum values of B factors

of atoms in the group. The column labelled 'Q < 0.9' lists the number of atoms with occupancy less than 0.9.

Mol	Type	Chain	Res	Atoms	RSCC	RSR	LLDF	B-factors(\AA^2)	Q<0.9
5	GTA	A	1012	51/51	0.91	0.20	0.56	20,69,79,82	0
3	SAH	A	1001	26/26	0.92	0.18	0.11	67,69,73,80	0
4	CIT	A	1011	13/13	0.93	0.15	0.03	75,77,79,80	0
2	SO4	A	1002	5/5	0.96	0.11	-1.26	80,80,82,82	0
2	SO4	A	1004	5/5	0.98	0.09	-1.26	60,61,62,62	0
2	SO4	A	1003	5/5	0.99	0.09	-2.71	65,65,67,68	0
2	SO4	A	1010	5/5	0.86	0.20	-	108,109,109,109	0
2	SO4	A	1005	5/5	0.78	0.41	-	125,126,126,126	0
2	SO4	A	1009	5/5	0.89	0.27	-	60,60,60,60	5
2	SO4	A	1008	5/5	0.90	0.16	-	97,97,97,97	0
2	SO4	A	1007	5/5	0.92	0.26	-	117,117,118,119	0
2	SO4	A	1006	5/5	0.94	0.12	-	76,76,77,77	0

6.5 Other polymers [i](#)

There are no such residues in this entry.