



# Full wwPDB X-ray Structure Validation Report ⓘ

Nov 15, 2017 – 06:42 AM EST

PDB ID : 4P8Y  
Title : Crystal structure of M. tuberculosis DprE1 in complex with the non-covalent inhibitor Ty21c  
Authors : Neres, J.; Pojer, F.; Cole, S.T.  
Deposited on : unknown  
Resolution : 2.01 Å(reported)

This is a Full wwPDB X-ray Structure Validation Report for a publicly released PDB entry.

We welcome your comments at [validation@mail.wwpdb.org](mailto:validation@mail.wwpdb.org)

A user guide is available at

<http://wwpdb.org/validation/2016/XrayValidationReportHelp>

with specific help available everywhere you see the ⓘ symbol.

---

The following versions of software and data (see [references ⓘ](#)) were used in the production of this report:

MolProbity : 4.02b-467  
Mogul : 1.7.2 (RC1), CSD as538be (2017)  
Xtriage (Phenix) : 1.9-1692  
EDS : rb-20030345  
Percentile statistics : 20161228.v01 (using entries in the PDB archive December 28th 2016)  
Refmac : 5.8.0135  
CCP4 : 6.5.0  
Ideal geometry (proteins) : Engh & Huber (2001)  
Ideal geometry (DNA, RNA) : Parkinson et al. (1996)  
Validation Pipeline (wwPDB-VP) : rb-20030345

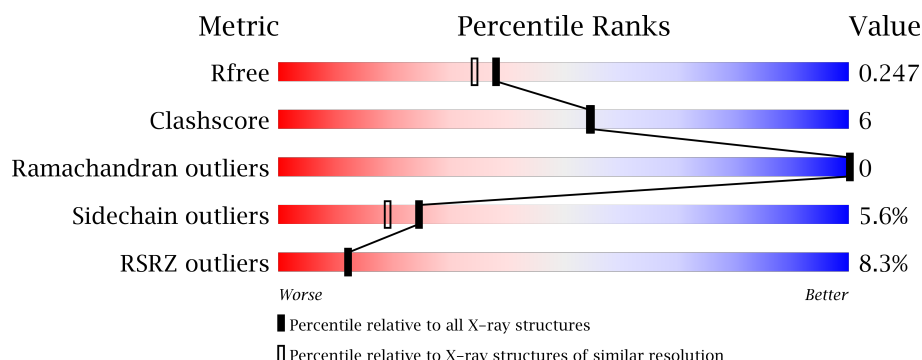
# 1 Overall quality at a glance

The following experimental techniques were used to determine the structure:

*X-RAY DIFFRACTION*

The reported resolution of this entry is 2.01 Å.

Percentile scores (ranging between 0-100) for global validation metrics of the entry are shown in the following graphic. The table shows the number of entries on which the scores are based.



Metric	Whole archive (#Entries)	Similar resolution (#Entries, resolution range(Å))
$R_{free}$	100719	6609 (2.00-2.00)
Clashscore	112137	7775 (2.00-2.00)
Ramachandran outliers	110173	7679 (2.00-2.00)
Sidechain outliers	110143	7678 (2.00-2.00)
RSRZ outliers	101464	6696 (2.00-2.00)

The table below summarises the geometric issues observed across the polymeric chains and their fit to the electron density. The red, orange, yellow and green segments on the lower bar indicate the fraction of residues that contain outliers for  $\geq 3$ , 2, 1 and 0 types of geometric quality criteria. A grey segment represents the fraction of residues that are not modelled. The numeric value for each fraction is indicated below the corresponding segment, with a dot representing fractions  $\leq 5\%$ . The upper red bar (where present) indicates the fraction of residues that have poor fit to the electron density. The numeric value is given above the bar.

Mol	Chain	Length	Quality of chain
1	A	480	<div> <div>8%</div> <div> <div></div> <div>81%</div> <div>11%</div> <div>• 5%</div> </div> </div>
1	B	480	<div> <div>7%</div> <div> <div></div> <div>74%</div> <div>11%</div> <div>• 13%</div> </div> </div>

## 2 Entry composition

There are 5 unique types of molecules in this entry. The entry contains 7046 atoms, of which 0 are hydrogens and 0 are deuteriums.

In the tables below, the ZeroOcc column contains the number of atoms modelled with zero occupancy, the AltConf column contains the number of residues with at least one atom in alternate conformation and the Trace column contains the number of residues modelled with at most 2 atoms.

- Molecule 1 is a protein called Probable decaprenylphosphoryl-beta-D-ribose oxidase.

Mol	Chain	Residues	Atoms					ZeroOcc	AltConf	Trace
1	A	455	Total	C	N	O	S	0	1	0
			3499	2225	616	646	12			
1	B	416	Total	C	N	O	S	0	4	0
			3225	2048	570	596	11			

There are 38 discrepancies between the modelled and reference sequences:

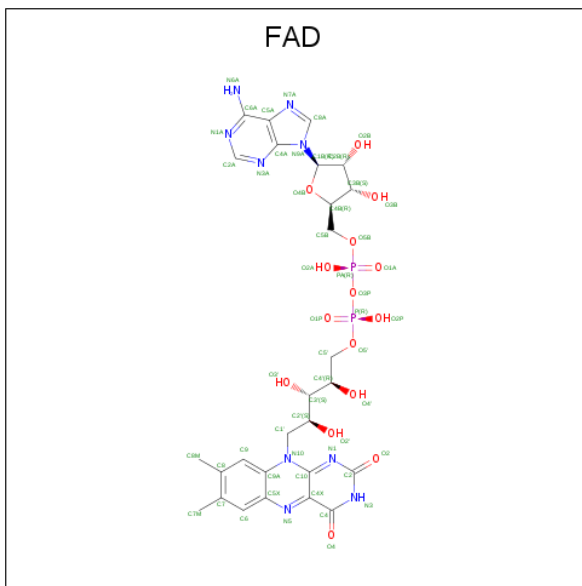
Chain	Residue	Modelled	Actual	Comment	Reference
A	-18	GLY	-	expression tag	UNP P72056
A	-17	SER	-	expression tag	UNP P72056
A	-16	SER	-	expression tag	UNP P72056
A	-15	HIS	-	expression tag	UNP P72056
A	-14	HIS	-	expression tag	UNP P72056
A	-13	HIS	-	expression tag	UNP P72056
A	-12	HIS	-	expression tag	UNP P72056
A	-11	HIS	-	expression tag	UNP P72056
A	-10	HIS	-	expression tag	UNP P72056
A	-9	SER	-	expression tag	UNP P72056
A	-8	SER	-	expression tag	UNP P72056
A	-7	GLY	-	expression tag	UNP P72056
A	-6	LEU	-	expression tag	UNP P72056
A	-5	VAL	-	expression tag	UNP P72056
A	-4	PRO	-	expression tag	UNP P72056
A	-3	ARG	-	expression tag	UNP P72056
A	-2	GLY	-	expression tag	UNP P72056
A	-1	SER	-	expression tag	UNP P72056
A	0	HIS	-	expression tag	UNP P72056
B	-18	GLY	-	expression tag	UNP P72056
B	-17	SER	-	expression tag	UNP P72056
B	-16	SER	-	expression tag	UNP P72056
B	-15	HIS	-	expression tag	UNP P72056
B	-14	HIS	-	expression tag	UNP P72056
B	-13	HIS	-	expression tag	UNP P72056

*Continued on next page...*

Continued from previous page...

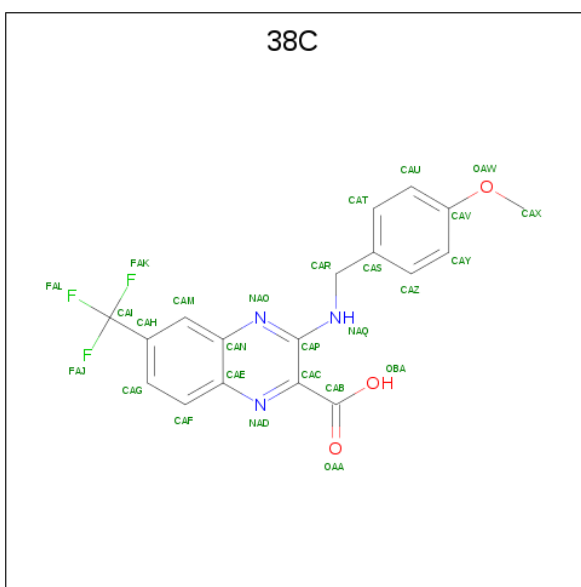
Chain	Residue	Modelled	Actual	Comment	Reference
B	-12	HIS	-	expression tag	UNP P72056
B	-11	HIS	-	expression tag	UNP P72056
B	-10	HIS	-	expression tag	UNP P72056
B	-9	SER	-	expression tag	UNP P72056
B	-8	SER	-	expression tag	UNP P72056
B	-7	GLY	-	expression tag	UNP P72056
B	-6	LEU	-	expression tag	UNP P72056
B	-5	VAL	-	expression tag	UNP P72056
B	-4	PRO	-	expression tag	UNP P72056
B	-3	ARG	-	expression tag	UNP P72056
B	-2	GLY	-	expression tag	UNP P72056
B	-1	SER	-	expression tag	UNP P72056
B	0	HIS	-	expression tag	UNP P72056

- Molecule 2 is FLAVIN-ADENINE DINUCLEOTIDE (three-letter code: FAD) (formula:  $\text{C}_{27}\text{H}_{33}\text{N}_9\text{O}_{15}\text{P}_2$ ).



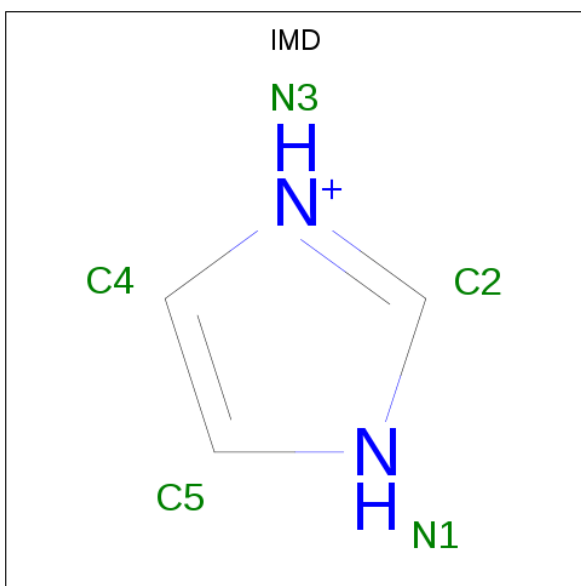
Mol	Chain	Residues	Atoms					ZeroOcc	AltConf
2	A	1	Total 53	C 27	N 9	O 15	P 2	0	0
2	B	1	Total 53	C 27	N 9	O 15	P 2	0	0

- Molecule 3 is 3-[(4-methoxybenzyl)amino]-6-(trifluoromethyl)quinoxaline-2-carboxylic acid (three-letter code: 38C) (formula:  $C_{18}H_{14}F_3N_3O_3$ ).



Mol	Chain	Residues	Atoms					ZeroOcc	AltConf
3	A	1	Total	C	F	N	O	0	0
			27	18	3	3	3		

- Molecule 4 is IMIDAZOLE (three-letter code: IMD) (formula:  $C_3H_5N_2$ ).



Mol	Chain	Residues	Atoms			ZeroOcc	AltConf
4	A	1	Total	C	N	0	0
			5	3	2		

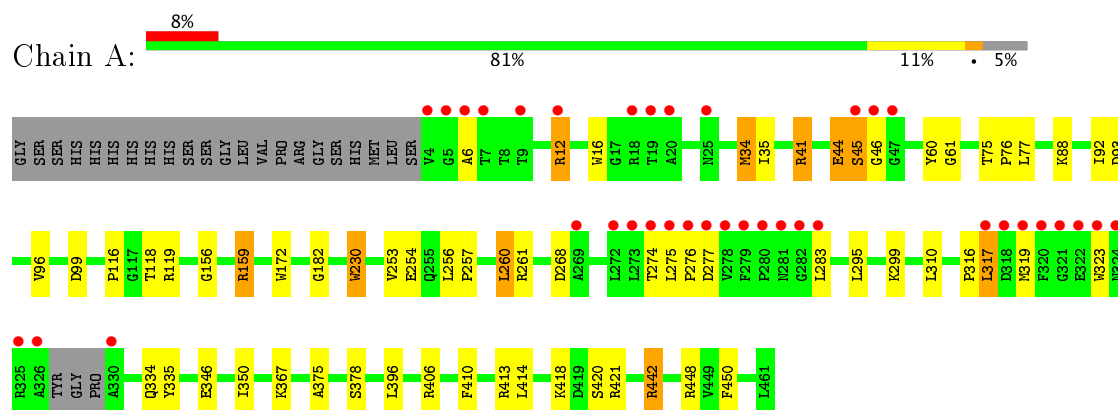
- Molecule 5 is water.

Mol	Chain	Residues	Atoms		ZeroOcc	AltConf
5	A	122	Total 122	O 122	0	0
5	B	62	Total 62	O 62	0	0

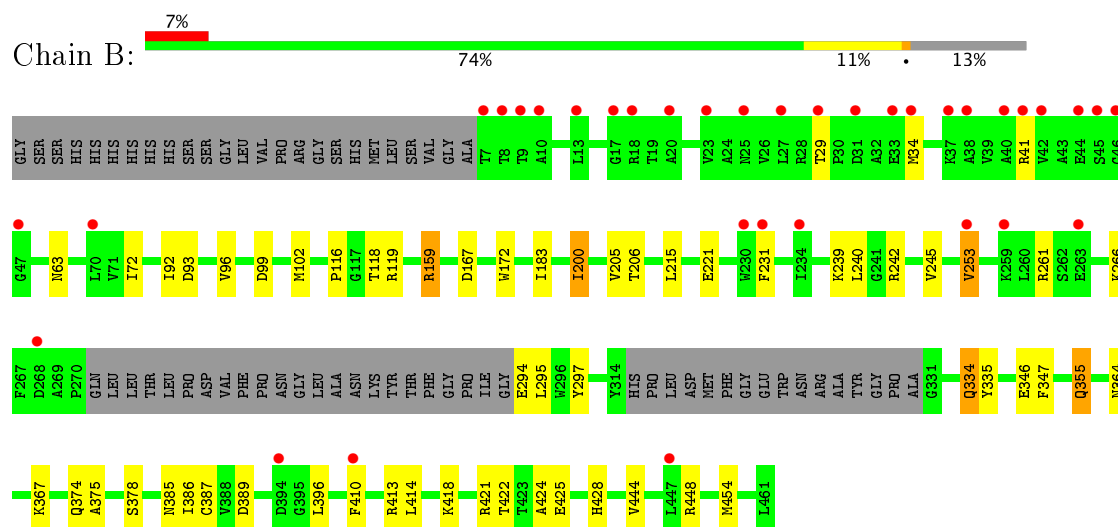
### 3 Residue-property plots [i](#)

These plots are drawn for all protein, RNA and DNA chains in the entry. The first graphic for a chain summarises the proportions of the various outlier classes displayed in the second graphic. The second graphic shows the sequence view annotated by issues in geometry and electron density. Residues are color-coded according to the number of geometric quality criteria for which they contain at least one outlier: green = 0, yellow = 1, orange = 2 and red = 3 or more. A red dot above a residue indicates a poor fit to the electron density ( $RSRZ > 2$ ). Stretches of 2 or more consecutive residues without any outlier are shown as a green connector. Residues present in the sample, but not in the model, are shown in grey.

- Molecule 1: Probable decaprenylphosphoryl-beta-D-ribose oxidase



- Molecule 1: Probable decaprenylphosphoryl-beta-D-ribose oxidase



## 4 Data and refinement statistics

Property	Value	Source
Space group	P 1 21 1	Depositor
Cell constants a, b, c, $\alpha$ , $\beta$ , $\gamma$	77.06 Å 83.31 Å 80.66 Å 90.00° 103.00° 90.00°	Depositor
Resolution (Å)	42.30 – 2.01 42.27 – 2.01	Depositor EDS
% Data completeness (in resolution range)	96.4 (42.30-2.01) 96.5 (42.27-2.01)	Depositor EDS
$R_{merge}$	(Not available)	Depositor
$R_{sym}$	(Not available)	Depositor
$\langle I/\sigma(I) \rangle$ <sup>1</sup>	3.55 (at 2.01 Å)	Xtriage
Refinement program	REFMAC 5.6.0117	Depositor
R, $R_{free}$	0.209 , 0.248 0.208 , 0.247	Depositor DCC
$R_{free}$ test set	3202 reflections (5.27%)	DCC
Wilson B-factor (Å <sup>2</sup> )	33.5	Xtriage
Anisotropy	0.037	Xtriage
Bulk solvent $k_{sol}$ (e/Å <sup>3</sup> ), $B_{sol}$ (Å <sup>2</sup> )	0.34 , 37.4	EDS
L-test for twinning <sup>2</sup>	$\langle  L  \rangle = 0.49$ , $\langle L^2 \rangle = 0.32$	Xtriage
Estimated twinning fraction	0.019 for l,-k,h	Xtriage
$F_o, F_c$ correlation	0.95	EDS
Total number of atoms	7046	wwPDB-VP
Average B, all atoms (Å <sup>2</sup> )	40.0	wwPDB-VP

Xtriage's analysis on translational NCS is as follows: *The largest off-origin peak in the Patterson function is 4.26% of the height of the origin peak. No significant pseudotranslation is detected.*

<sup>1</sup>Intensities estimated from amplitudes.

<sup>2</sup>Theoretical values of  $\langle |L| \rangle$ ,  $\langle L^2 \rangle$  for acentric reflections are 0.5, 0.333 respectively for untwinned datasets, and 0.375, 0.2 for perfectly twinned datasets.



## 5 Model quality [i](#)

### 5.1 Standard geometry [i](#)

Bond lengths and bond angles in the following residue types are not validated in this section: 38C, IMD, FAD

The Z score for a bond length (or angle) is the number of standard deviations the observed value is removed from the expected value. A bond length (or angle) with  $|Z| > 5$  is considered an outlier worth inspection. RMSZ is the root-mean-square of all Z scores of the bond lengths (or angles).

Mol	Chain	Bond lengths		Bond angles	
		RMSZ	$\# Z  > 5$	RMSZ	$\# Z  > 5$
1	A	0.55	4/3585 (0.1%)	0.62	0/4870
1	B	0.52	0/3310	0.58	0/4491
All	All	0.53	4/6895 (0.1%)	0.60	0/9361

All (4) bond length outliers are listed below:

Mol	Chain	Res	Type	Atoms	Z	Observed(Å)	Ideal(Å)
1	A	230	TRP	CD2-CE2	5.24	1.47	1.41
1	A	172	TRP	CD2-CE2	5.19	1.47	1.41
1	A	323	TRP	CD2-CE2	5.08	1.47	1.41
1	A	16	TRP	CD2-CE2	5.05	1.47	1.41

There are no bond angle outliers.

There are no chirality outliers.

There are no planarity outliers.

### 5.2 Too-close contacts [i](#)

In the following table, the Non-H and H(model) columns list the number of non-hydrogen atoms and hydrogen atoms in the chain respectively. The H(added) column lists the number of hydrogen atoms added and optimized by MolProbity. The Clashes column lists the number of clashes within the asymmetric unit, whereas Symm-Clashes lists symmetry related clashes.

Mol	Chain	Non-H	H(model)	H(added)	Clashes	Symm-Clashes
1	A	3499	0	3471	45	0
1	B	3225	0	3210	37	0
2	A	53	0	31	0	0
2	B	53	0	31	0	0
3	A	27	0	13	0	0

*Continued on next page...*

*Continued from previous page...*

Mol	Chain	Non-H	H(model)	H(added)	Clashes	Symm-Clashes
4	A	5	0	5	0	0
5	A	122	0	0	1	0
5	B	62	0	0	2	0
All	All	7046	0	6761	82	0

The all-atom clashscore is defined as the number of clashes found per 1000 atoms (including hydrogen atoms). The all-atom clashscore for this structure is 6.

All (82) close contacts within the same asymmetric unit are listed below, sorted by their clash magnitude.

Atom-1	Atom-2	Interatomic distance (Å)	Clash overlap (Å)
1:A:12:ARG:HH11	1:A:12:ARG:HG2	1.17	1.09
1:B:347:PHE:CE1	1:B:386:ILE:HD11	1.89	1.06
1:A:230:TRP:CZ2	1:A:317:LEU:HD22	1.96	0.99
1:A:41:ARG:O	1:A:44:GLU:HG3	1.63	0.98
1:B:347:PHE:HE1	1:B:386:ILE:CD1	1.81	0.94
1:B:347:PHE:CE1	1:B:386:ILE:CD1	2.53	0.90
1:B:159:ARG:HH11	1:B:159:ARG:HG2	1.38	0.88
1:A:442:ARG:CG	1:A:442:ARG:HH11	1.88	0.84
1:B:99:ASP:OD2	1:B:119:ARG:NH1	2.09	0.84
1:A:442:ARG:HG2	1:A:442:ARG:HH11	1.44	0.80
1:B:159:ARG:CG	1:B:159:ARG:HH11	1.96	0.79
1:A:230:TRP:CZ2	1:A:317:LEU:CD2	2.66	0.77
1:B:159:ARG:NH1	1:B:159:ARG:HG2	1.94	0.77
1:A:295:LEU:O	1:A:299:LYS:HG3	1.85	0.75
1:B:347:PHE:CZ	1:B:386:ILE:HD11	2.23	0.73
1:A:159:ARG:HH11	1:A:159:ARG:HG2	1.53	0.71
1:B:387[A]:CYS:SG	1:B:418:LYS:NZ	2.68	0.66
1:A:12:ARG:HG2	1:A:12:ARG:NH1	1.95	0.65
1:A:119:ARG:HE	1:A:310:LEU:HD21	1.61	0.65
1:A:275:LEU:HD13	1:A:319:MET:HB3	1.78	0.63
1:A:159:ARG:NH1	1:A:159:ARG:HG2	2.14	0.62
1:A:253:VAL:HG22	1:A:261:ARG:HG2	1.81	0.62
1:B:347:PHE:HE1	1:B:386:ILE:HD13	1.60	0.61
1:B:334:GLN:H	1:B:334:GLN:CD	2.07	0.58
1:A:41:ARG:O	1:A:44:GLU:CG	2.47	0.56
1:B:221:GLU:HG2	5:B:625:HOH:O	2.06	0.56
1:A:116:PRO:HG2	1:A:118:THR:O	2.06	0.55
1:B:385:ASN:C	1:B:386:ILE:HD12	2.26	0.55
1:B:231:PHE:HB3	1:B:364:ASN:HB2	1.88	0.55
1:A:159:ARG:CG	1:A:159:ARG:HH11	2.19	0.54

*Continued on next page...*

*Continued from previous page...*

Atom-1	Atom-2	Interatomic distance (Å)	Clash overlap (Å)
1:B:72:ILE:HD12	1:B:183:ILE:HD11	1.89	0.54
1:A:230:TRP:CE2	1:A:317:LEU:HD22	2.42	0.53
1:A:99:ASP:OD2	1:A:119:ARG:NH1	2.42	0.53
1:A:60:TYR:CE1	1:A:334:GLN:HG3	2.46	0.51
1:B:159:ARG:NH1	1:B:167:ASP:OD2	2.45	0.50
1:A:156:GLY:HA2	5:A:602:HOH:O	2.11	0.50
1:A:375:ALA:HB3	1:A:378:SER:HB2	1.94	0.50
1:B:240:LEU:HD22	1:B:355:GLN:HG2	1.93	0.50
1:B:102:MET:HG3	5:B:627:HOH:O	2.12	0.49
1:A:350:ILE:HD11	1:A:410:PHE:HD2	1.78	0.49
1:B:29:THR:HG21	1:B:34:MET:HB2	1.94	0.49
1:A:45:SER:N	1:A:46:GLY:HA2	2.26	0.49
1:B:200:ILE:O	1:B:200:ILE:HG13	2.11	0.48
1:A:253:VAL:HG12	1:A:254:GLU:OE1	2.13	0.48
1:A:335:TYR:CZ	1:A:414:LEU:HD21	2.49	0.48
1:A:442:ARG:CG	1:A:442:ARG:NH1	2.58	0.48
1:A:230:TRP:CH2	1:A:317:LEU:CD2	2.97	0.47
1:A:6:ALA:HB2	1:A:34:MET:SD	2.55	0.47
1:B:63:ASN:HB3	1:B:454:MET:SD	2.55	0.47
1:B:294:GLU:CG	1:B:295:LEU:H	2.28	0.47
1:A:274:THR:HG22	1:A:277:ASP:OD1	2.15	0.46
1:B:93:ASP:O	1:B:96:VAL:HG13	2.14	0.46
1:A:230:TRP:CE2	1:A:317:LEU:CD2	2.98	0.46
1:A:93:ASP:O	1:A:96:VAL:HG13	2.16	0.46
1:B:424:ALA:O	1:B:428:HIS:CD2	2.68	0.45
1:B:206:THR:O	1:B:242:ARG:HB2	2.15	0.45
1:B:346:GLU:HB3	1:B:410:PHE:CD2	2.52	0.45
1:A:442:ARG:HG3	1:A:442:ARG:HH11	1.77	0.45
1:A:99:ASP:HB2	1:A:119:ARG:HB3	2.00	0.44
1:A:257:PRO:HG2	1:A:260:LEU:HD22	1.99	0.44
1:A:41:ARG:HA	1:A:44:GLU:HG2	2.00	0.43
1:B:239:LYS:HD2	1:B:242:ARG:NH1	2.33	0.43
1:B:172:TRP:CD2	1:B:374:GLN:HG3	2.53	0.43
1:B:215:LEU:HD23	1:B:215:LEU:O	2.19	0.43
1:B:294:GLU:HG3	1:B:295:LEU:H	1.84	0.43
1:B:335:TYR:CZ	1:B:414:LEU:HD21	2.54	0.43
1:B:116:PRO:HG2	1:B:118:THR:O	2.18	0.43
1:A:12:ARG:CG	1:A:12:ARG:NH1	2.70	0.42
1:A:6:ALA:HB2	1:A:34:MET:CE	2.49	0.42
1:B:253:VAL:HG23	1:B:261:ARG:HG2	2.00	0.42
1:A:75:THR:N	1:A:76:PRO:HD2	2.35	0.42

*Continued on next page...*

*Continued from previous page...*

Atom-1	Atom-2	Interatomic distance (Å)	Clash overlap (Å)
1:B:374:GLN:H	1:B:374:GLN:HG2	1.74	0.42
1:A:316:PRO:O	1:A:319:MET:HG2	2.20	0.42
1:B:375:ALA:HB3	1:B:378:SER:HB2	2.02	0.42
1:A:61:GLY:HA2	1:A:420:SER:HB3	2.01	0.42
1:A:35:ILE:HD11	1:A:77:LEU:HD11	2.02	0.42
1:A:274:THR:HG23	1:A:276:PRO:HD2	2.02	0.41
1:A:346:GLU:HB3	1:A:410:PHE:CD2	2.55	0.41
1:B:205:VAL:HG13	1:B:297:TYR:CE2	2.56	0.41
1:B:347:PHE:CE1	1:B:386:ILE:HD13	2.42	0.41
1:A:346:GLU:HB3	1:A:410:PHE:CG	2.56	0.40
1:A:182:GLY:HA2	1:A:450:PHE:CE2	2.56	0.40

There are no symmetry-related clashes.

## 5.3 Torsion angles [i](#)

### 5.3.1 Protein backbone [i](#)

In the following table, the Percentiles column shows the percent Ramachandran outliers of the chain as a percentile score with respect to all X-ray entries followed by that with respect to entries of similar resolution.

The Analysed column shows the number of residues for which the backbone conformation was analysed, and the total number of residues.

Mol	Chain	Analysed	Favoured	Allowed	Outliers	Percentiles	
1	A	452/480 (94%)	445 (98%)	7 (2%)	0	100	100
1	B	414/480 (86%)	409 (99%)	5 (1%)	0	100	100
All	All	866/960 (90%)	854 (99%)	12 (1%)	0	100	100

There are no Ramachandran outliers to report.

### 5.3.2 Protein sidechains [i](#)

In the following table, the Percentiles column shows the percent sidechain outliers of the chain as a percentile score with respect to all X-ray entries followed by that with respect to entries of similar resolution.

The Analysed column shows the number of residues for which the sidechain conformation was analysed, and the total number of residues.

Mol	Chain	Analysed	Rotameric	Outliers	Percentiles	
1	A	364/384 (95%)	343 (94%)	21 (6%)	23	18
1	B	337/384 (88%)	319 (95%)	18 (5%)	26	21
All	All	701/768 (91%)	662 (94%)	39 (6%)	25	19

All (39) residues with a non-rotameric sidechain are listed below:

Mol	Chain	Res	Type
1	A	12	ARG
1	A	34	MET
1	A	41	ARG
1	A	44	GLU
1	A	45	SER
1	A	88	LYS
1	A	92	ILE
1	A	159	ARG
1	A	256	LEU
1	A	260	LEU
1	A	268	ASP
1	A	283	LEU
1	A	317	LEU
1	A	367	LYS
1	A	396	LEU
1	A	406	ARG
1	A	413	ARG
1	A	418	LYS
1	A	421	ARG
1	A	442	ARG
1	A	448	ARG
1	B	41	ARG
1	B	92	ILE
1	B	159	ARG
1	B	200	ILE
1	B	245	VAL
1	B	253	VAL
1	B	266	LYS
1	B	334	GLN
1	B	355	GLN
1	B	367	LYS
1	B	389	ASP
1	B	396	LEU
1	B	413	ARG
1	B	421	ARG

*Continued on next page...*

*Continued from previous page...*

Mol	Chain	Res	Type
1	B	422	THR
1	B	425	GLU
1	B	444	VAL
1	B	448	ARG

Some sidechains can be flipped to improve hydrogen bonding and reduce clashes. All (3) such sidechains are listed below:

Mol	Chain	Res	Type
1	A	315	HIS
1	A	334	GLN
1	B	355	GLN

### 5.3.3 RNA ⓘ

There are no RNA molecules in this entry.

## 5.4 Non-standard residues in protein, DNA, RNA chains ⓘ

There are no non-standard protein/DNA/RNA residues in this entry.

## 5.5 Carbohydrates ⓘ

There are no carbohydrates in this entry.

## 5.6 Ligand geometry ⓘ

4 ligands are modelled in this entry.

In the following table, the Counts columns list the number of bonds (or angles) for which Mogul statistics could be retrieved, the number of bonds (or angles) that are observed in the model and the number of bonds (or angles) that are defined in the Chemical Component Dictionary. The Link column lists molecule types, if any, to which the group is linked. The Z score for a bond length (or angle) is the number of standard deviations the observed value is removed from the expected value. A bond length (or angle) with  $|Z| > 2$  is considered an outlier worth inspection. RMSZ is the root-mean-square of all Z scores of the bond lengths (or angles).

Mol	Type	Chain	Res	Link	Bond lengths			Bond angles		
					Counts	RMSZ	$\# Z  > 2$	Counts	RMSZ	$\# Z  > 2$
2	FAD	A	501	-	51,58,58	1.41	8 (15%)	54,89,89	2.12	9 (16%)

Mol	Type	Chain	Res	Link	Bond lengths			Bond angles		
					Counts	RMSZ	# Z  > 2	Counts	RMSZ	# Z  > 2
3	38C	A	502	-	26,29,29	1.36	3 (11%)	36,42,42	1.33	5 (13%)
4	IMD	A	503	-	3,5,5	0.51	0	4,5,5	0.55	0
2	FAD	B	501	-	51,58,58	1.48	8 (15%)	54,89,89	2.11	10 (18%)

In the following table, the Chirals column lists the number of chiral outliers, the number of chiral centers analysed, the number of these observed in the model and the number defined in the Chemical Component Dictionary. Similar counts are reported in the Torsion and Rings columns. '-' means no outliers of that kind were identified.

Mol	Type	Chain	Res	Link	Chirals	Torsions	Rings
2	FAD	A	501	-	-	0/28/50/50	0/6/6/6
3	38C	A	502	-	-	0/13/17/17	0/3/3/3
4	IMD	A	503	-	-	0/0/0/0	0/1/1/1
2	FAD	B	501	-	-	0/28/50/50	0/6/6/6

All (19) bond length outliers are listed below:

Mol	Chain	Res	Type	Atoms	Z	Observed(Å)	Ideal(Å)
3	A	502	38C	CAR-NAQ	-3.75	1.33	1.45
3	A	502	38C	CAC-NAD	2.03	1.35	1.32
2	B	501	FAD	C4X-N5	2.26	1.36	1.33
2	B	501	FAD	C10-N1	2.27	1.36	1.33
2	A	501	FAD	C4X-N5	2.36	1.36	1.33
2	A	501	FAD	C10-N1	2.44	1.36	1.33
2	A	501	FAD	C9A-N10	2.69	1.42	1.38
2	A	501	FAD	C5A-C4A	2.75	1.46	1.40
2	B	501	FAD	C5A-C4A	2.78	1.46	1.40
2	B	501	FAD	C9A-N10	2.97	1.42	1.38
2	A	501	FAD	C8-C7	3.23	1.49	1.41
2	A	501	FAD	C4-C4X	3.25	1.47	1.41
2	B	501	FAD	C8-C7	3.37	1.49	1.41
2	A	501	FAD	C9A-C5X	3.69	1.50	1.42
2	B	501	FAD	C9A-C5X	3.70	1.50	1.42
2	B	501	FAD	C4-C4X	3.72	1.48	1.41
3	A	502	38C	CAP-NAO	3.85	1.36	1.31
2	B	501	FAD	C4X-C10	4.24	1.48	1.41
2	A	501	FAD	C4X-C10	4.25	1.48	1.41

All (24) bond angle outliers are listed below:

Mol	Chain	Res	Type	Atoms	Z	Observed(°)	Ideal(°)
2	A	501	FAD	N3A-C2A-N1A	-6.97	122.79	128.86

*Continued on next page...*

*Continued from previous page...*

Mol	Chain	Res	Type	Atoms	Z	Observed(°)	Ideal(°)
2	B	501	FAD	N3A-C2A-N1A	-6.62	123.09	128.86
2	B	501	FAD	C4-C4X-C10	-5.66	115.39	119.96
2	A	501	FAD	C4-C4X-C10	-5.55	115.47	119.96
2	A	501	FAD	C4X-C4-N3	-3.03	119.17	123.48
2	B	501	FAD	C4X-C4-N3	-2.71	119.63	123.48
2	B	501	FAD	C4X-C10-N10	-2.44	118.83	120.52
3	A	502	38C	FAL-CAI-CAH	-2.36	107.41	112.95
2	B	501	FAD	C4A-C5A-N7A	-2.27	107.22	109.41
3	A	502	38C	CAC-CAP-NAO	-2.21	120.07	122.01
2	A	501	FAD	C4X-C10-N10	-2.03	119.11	120.52
3	A	502	38C	CAC-CAP-NAQ	-2.02	118.20	121.64
2	B	501	FAD	C5X-C9A-N10	2.01	119.15	117.66
2	A	501	FAD	N6A-C6A-N1A	2.29	123.30	118.77
3	A	502	38C	NAQ-CAP-NAO	2.56	121.73	118.68
2	A	501	FAD	C4X-N5-C5X	3.00	119.93	116.76
3	A	502	38C	CAR-NAQ-CAP	3.21	127.51	123.28
2	A	501	FAD	C4-C4X-N5	3.49	122.51	118.68
2	B	501	FAD	C4-C4X-N5	3.79	122.84	118.68
2	B	501	FAD	C4X-N5-C5X	3.81	120.78	116.76
2	B	501	FAD	C1'-N10-C9A	4.37	122.35	118.35
2	A	501	FAD	C1'-N10-C9A	4.55	122.51	118.35
2	B	501	FAD	C4-N3-C2	8.02	122.17	115.16
2	A	501	FAD	C4-N3-C2	8.36	122.47	115.16

There are no chirality outliers.

There are no torsion outliers.

There are no ring outliers.

No monomer is involved in short contacts.

## 5.7 Other polymers

There are no such residues in this entry.

## 5.8 Polymer linkage issues

There are no chain breaks in this entry.



## 6 Fit of model and data

### 6.1 Protein, DNA and RNA chains

In the following table, the column labelled ‘#RSRZ> 2’ contains the number (and percentage) of RSRZ outliers, followed by percent RSRZ outliers for the chain as percentile scores relative to all X-ray entries and entries of similar resolution. The OWAB column contains the minimum, median, 95<sup>th</sup> percentile and maximum values of the occupancy-weighted average B-factor per residue. The column labelled ‘Q< 0.9’ lists the number of (and percentage) of residues with an average occupancy less than 0.9.

Mol	Chain	Analysed	<RSRZ>	#RSRZ>2	OWAB(Å <sup>2</sup> )	Q<0.9
1	A	455/480 (94%)	0.23	37 (8%) 13 13	20, 32, 70, 89	0
1	B	416/480 (86%)	0.32	35 (8%) 12 12	23, 42, 69, 95	0
All	All	871/960 (90%)	0.27	72 (8%) 12 12	20, 37, 70, 95	0

All (72) RSRZ outliers are listed below:

Mol	Chain	Res	Type	RSRZ
1	A	323	TRP	6.7
1	A	330	ALA	6.4
1	A	319	MET	6.3
1	A	280	PRO	6.3
1	A	47	GLY	6.2
1	B	7	THR	5.4
1	B	46	GLY	5.4
1	B	8	THR	5.1
1	B	44	GLU	4.9
1	A	321	GLY	4.7
1	A	320	PHE	4.6
1	A	281	ASN	4.5
1	A	324	ASN	4.4
1	A	269	ALA	4.3
1	A	46	GLY	4.2
1	A	282	GLY	4.0
1	A	275	LEU	4.0
1	A	326	ALA	3.8
1	A	279	PHE	3.8
1	B	29	THR	3.7
1	B	18	ARG	3.7
1	B	47	GLY	3.7
1	A	283	LEU	3.6
1	A	4	VAL	3.5

*Continued on next page...*

*Continued from previous page...*

Mol	Chain	Res	Type	RSRZ
1	A	322	GLU	3.4
1	A	7	THR	3.3
1	B	231	PHE	3.2
1	B	268	ASP	3.1
1	A	5	GLY	3.0
1	A	276	PRO	3.0
1	B	230[A]	TRP	2.9
1	B	17	GLY	2.9
1	A	9	THR	2.8
1	B	9	THR	2.8
1	B	34	MET	2.8
1	B	27	LEU	2.7
1	A	277	ASP	2.6
1	A	317	LEU	2.6
1	B	40	ALA	2.6
1	A	18	ARG	2.6
1	A	274	THR	2.6
1	B	23	VAL	2.6
1	B	45	SER	2.5
1	B	447	LEU	2.5
1	A	325	ARG	2.5
1	B	25	ASN	2.4
1	B	37	LYS	2.4
1	B	10	ALA	2.4
1	B	31	ASP	2.4
1	B	234	ILE	2.4
1	A	272	LEU	2.3
1	B	70	LEU	2.3
1	A	12	ARG	2.3
1	A	20	ALA	2.3
1	A	25	ASN	2.2
1	B	259	LYS	2.2
1	B	38	ALA	2.2
1	A	273	LEU	2.2
1	B	13	LEU	2.2
1	B	263	GLU	2.2
1	B	41	ARG	2.2
1	B	394	ASP	2.1
1	A	6	ALA	2.1
1	B	33	GLU	2.1
1	B	410	PHE	2.1
1	B	20	ALA	2.1

*Continued on next page...*

*Continued from previous page...*

Mol	Chain	Res	Type	RSRZ
1	A	318	ASP	2.1
1	A	19	THR	2.1
1	A	278	VAL	2.0
1	B	42	VAL	2.0
1	B	253	VAL	2.0
1	A	45	SER	2.0

## 6.2 Non-standard residues in protein, DNA, RNA chains [i](#)

There are no non-standard protein/DNA/RNA residues in this entry.

## 6.3 Carbohydrates [i](#)

There are no carbohydrates in this entry.

## 6.4 Ligands [i](#)

In the following table, the Atoms column lists the number of modelled atoms in the group and the number defined in the chemical component dictionary. LLDF column lists the quality of electron density of the group with respect to its neighbouring residues in protein, DNA or RNA chains. The B-factors column lists the minimum, median, 95<sup>th</sup> percentile and maximum values of B factors of atoms in the group. The column labelled 'Q< 0.9' lists the number of atoms with occupancy less than 0.9.

Mol	Type	Chain	Res	Atoms	RSCC	RSR	LLDF	B-factors( $\text{\AA}^2$ )	Q<0.9
3	38C	A	502	27/27	0.85	0.20	0.17	48,50,67,68	27
2	FAD	A	501	53/53	0.97	0.13	0.01	24,27,29,29	0
2	FAD	B	501	53/53	0.97	0.12	-0.08	29,33,36,38	0
4	IMD	A	503	5/5	0.93	0.14	-	38,39,40,40	0

## 6.5 Other polymers [i](#)

There are no such residues in this entry.