



# wwPDB X-ray Structure Validation Summary Report ⓘ

Nov 14, 2017 – 11:36 PM EST

PDB ID : 4PA5  
Title : Tgl - a bacterial spore coat transglutaminase - cystamine complex  
Authors : Brito, J.A.; Placido, D.; Fernandes, C.G.; Lousa, D.; Isidro, A.; Soares, C.M.;  
Pohl, J.; Carrondo, M.A.; Henriques, A.O.; Archer, M.  
Deposited on : unknown  
Resolution : 1.86 Å(reported)

This is a wwPDB X-ray Structure Validation Summary Report for a publicly released PDB entry.

We welcome your comments at [validation@mail.wwpdb.org](mailto:validation@mail.wwpdb.org)

A user guide is available at

<http://wwpdb.org/validation/2016/XrayValidationReportHelp>

with specific help available everywhere you see the ⓘ symbol.

---

The following versions of software and data (see [references ⓘ](#)) were used in the production of this report:

MolProbity : 4.02b-467  
Mogul : 1.7.2 (RC1), CSD as538be (2017)  
Xtriage (Phenix) : 1.9-1692  
EDS : rb-20030345  
Percentile statistics : 20161228.v01 (using entries in the PDB archive December 28th 2016)  
Refmac : 5.8.0135  
CCP4 : 6.5.0  
Ideal geometry (proteins) : Engh & Huber (2001)  
Ideal geometry (DNA, RNA) : Parkinson et al. (1996)  
Validation Pipeline (wwPDB-VP) : rb-20030345

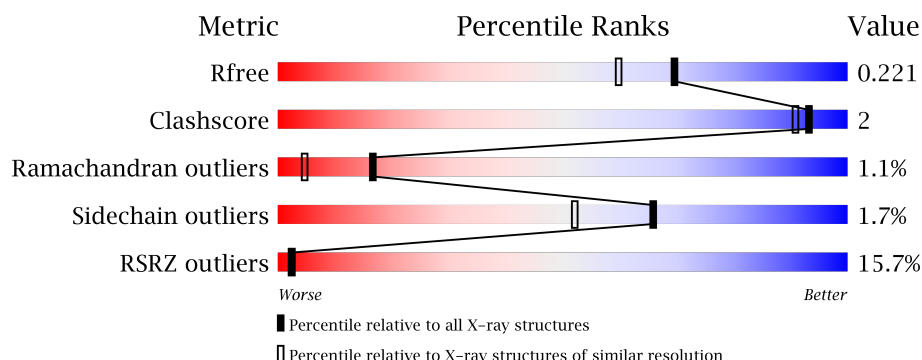
# 1 Overall quality at a glance ⓘ

The following experimental techniques were used to determine the structure:

## *X-RAY DIFFRACTION*

The reported resolution of this entry is 1.86 Å.

Percentile scores (ranging between 0-100) for global validation metrics of the entry are shown in the following graphic. The table shows the number of entries on which the scores are based.



Metric	Whole archive (#Entries)	Similar resolution (#Entries, resolution range(Å))
$R_{free}$	100719	1923 (1.86-1.86)
Clashscore	112137	2083 (1.86-1.86)
Ramachandran outliers	110173	2060 (1.86-1.86)
Sidechain outliers	110143	2060 (1.86-1.86)
RSRZ outliers	101464	1932 (1.86-1.86)

The table below summarises the geometric issues observed across the polymeric chains and their fit to the electron density. The red, orange, yellow and green segments on the lower bar indicate the fraction of residues that contain outliers for  $\geq 3$ , 2, 1 and 0 types of geometric quality criteria. A grey segment represents the fraction of residues that are not modelled. The numeric value for each fraction is indicated below the corresponding segment, with a dot representing fractions  $\leq 5\%$ . The upper red bar (where present) indicates the fraction of residues that have poor fit to the electron density. The numeric value is given above the bar.

Mol	Chain	Length	Quality of chain
1	A	260	<div> <div>14%</div> <div> <div></div> <div>87%</div> <div>6%</div> <div>7%</div> </div> </div>
1	B	260	<div> <div>15%</div> <div> <div></div> <div>87%</div> <div>6%</div> <div>7%</div> </div> </div>

The following table lists non-polymeric compounds, carbohydrate monomers and non-standard residues in protein, DNA, RNA chains that are outliers for geometric or electron-density-fit criteria:

Mol	Type	Chain	Res	Chirality	Geometry	Clashes	Electron density
4	SO4	A	2004	-	-	-	X

## 2 Entry composition

There are 10 unique types of molecules in this entry. The entry contains 4269 atoms, of which 0 are hydrogens and 0 are deuteriums.

In the tables below, the ZeroOcc column contains the number of atoms modelled with zero occupancy, the AltConf column contains the number of residues with at least one atom in alternate conformation and the Trace column contains the number of residues modelled with at most 2 atoms.

- Molecule 1 is a protein called Protein-glutamine gamma-glutamyltransferase.

Mol	Chain	Residues	Atoms					ZeroOcc	AltConf	Trace
1	A	242	Total	C	N	O	S	0	2	0
			1993	1300	333	352	8			
1	B	242	Total	C	N	O	S	0	2	0
			1997	1302	331	355	9			

There are 30 discrepancies between the modelled and reference sequences:

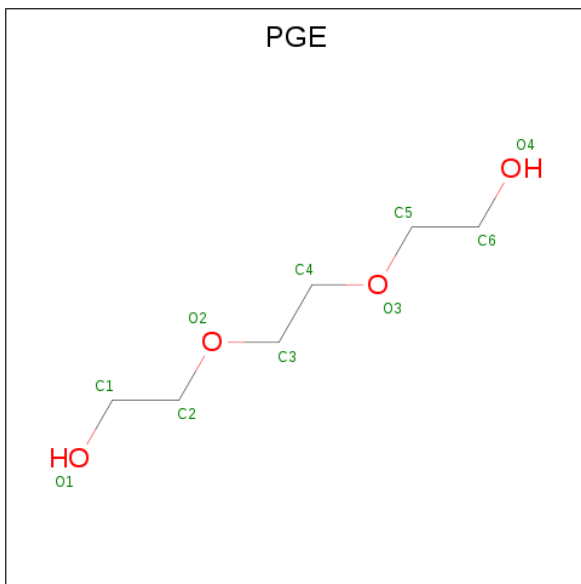
Chain	Residue	Modelled	Actual	Comment	Reference
A	246	VAL	-	expression tag	UNP P40746
A	247	ASP	-	expression tag	UNP P40746
A	248	LYS	-	expression tag	UNP P40746
A	249	LEU	-	expression tag	UNP P40746
A	250	ALA	-	expression tag	UNP P40746
A	251	ALA	-	expression tag	UNP P40746
A	252	ALA	-	expression tag	UNP P40746
A	253	LEU	-	expression tag	UNP P40746
A	254	GLU	-	expression tag	UNP P40746
A	255	HIS	-	expression tag	UNP P40746
A	256	HIS	-	expression tag	UNP P40746
A	257	HIS	-	expression tag	UNP P40746
A	258	HIS	-	expression tag	UNP P40746
A	259	HIS	-	expression tag	UNP P40746
A	260	HIS	-	expression tag	UNP P40746
B	246	VAL	-	expression tag	UNP P40746
B	247	ASP	-	expression tag	UNP P40746
B	248	LYS	-	expression tag	UNP P40746
B	249	LEU	-	expression tag	UNP P40746
B	250	ALA	-	expression tag	UNP P40746
B	251	ALA	-	expression tag	UNP P40746
B	252	ALA	-	expression tag	UNP P40746
B	253	LEU	-	expression tag	UNP P40746
B	254	GLU	-	expression tag	UNP P40746
B	255	HIS	-	expression tag	UNP P40746

*Continued on next page...*

Continued from previous page...

Chain	Residue	Modelled	Actual	Comment	Reference
B	256	HIS	-	expression tag	UNP P40746
B	257	HIS	-	expression tag	UNP P40746
B	258	HIS	-	expression tag	UNP P40746
B	259	HIS	-	expression tag	UNP P40746
B	260	HIS	-	expression tag	UNP P40746

- Molecule 2 is TRIETHYLENE GLYCOL (three-letter code: PGE) (formula:  $C_6H_{14}O_4$ ).



Mol	Chain	Residues	Atoms			ZeroOcc	AltConf
2	A	1	Total	C	O	0	0
			10	6	4		
2	A	1	Total	C	O	0	0
			10	6	4		

- Molecule 3 is 1,2-ETHANEDIOL (three-letter code: EDO) (formula:  $C_2H_6O_2$ ).



Mol	Chain	Residues	Atoms			ZeroOcc	AltConf
3	A	1	Total	C	O	0	0
			4	2	2		

- Molecule 4 is SULFATE ION (three-letter code: SO<sub>4</sub>) (formula: O<sub>4</sub>S).

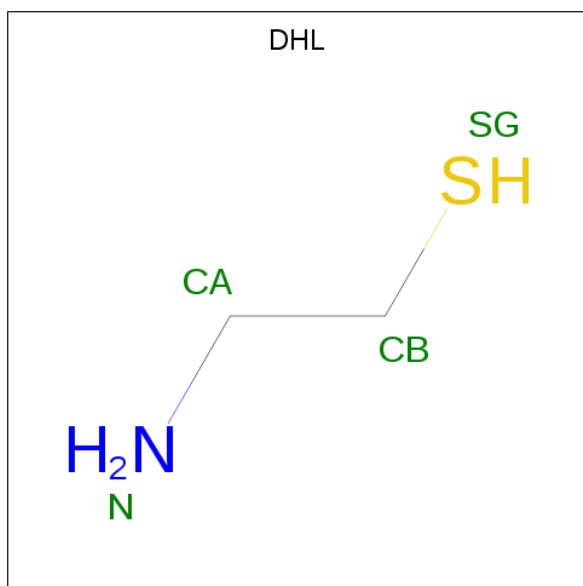


Mol	Chain	Residues	Atoms			ZeroOcc	AltConf
4	A	1	Total	O	S	0	0
			5	4	1		
4	B	1	Total	O	S	0	0
			5	4	1		

- Molecule 5 is ZINC ION (three-letter code: ZN) (formula: Zn).

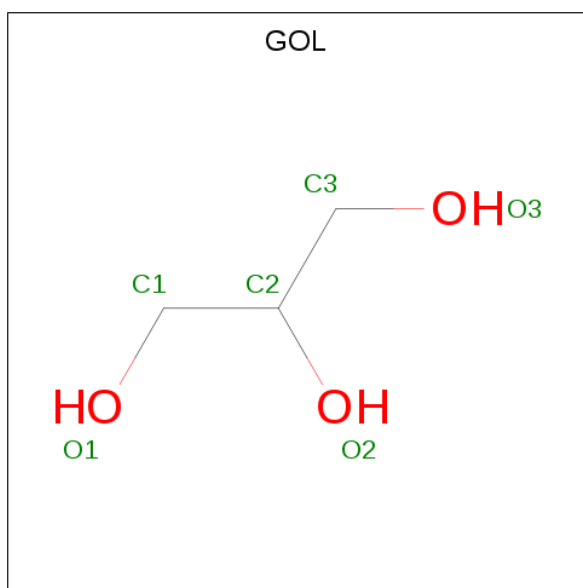
Mol	Chain	Residues	Atoms		ZeroOcc	AltConf
5	A	1	Total	Zn	0	0
			1	1		

- Molecule 6 is 2-AMINO-ETHANETHIOL (three-letter code: DHL) (formula:  $C_2H_7NS$ ).



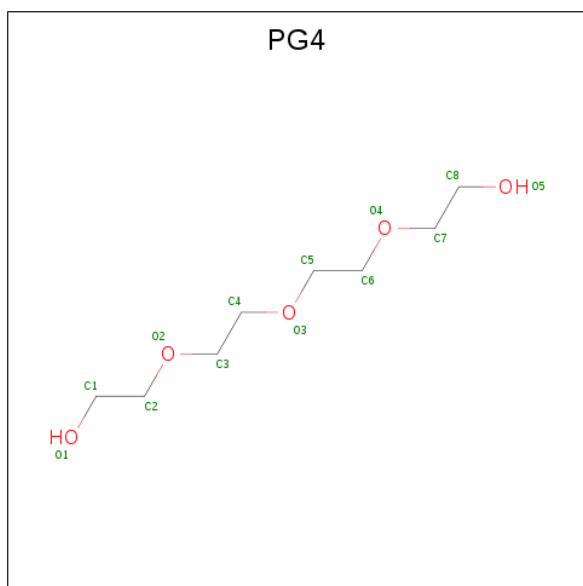
Mol	Chain	Residues	Atoms				ZeroOcc	AltConf
6	A	1	Total	C	N	S	0	0
			4	2	1	1		

- Molecule 7 is GLYCEROL (three-letter code: GOL) (formula:  $C_3H_8O_3$ ).



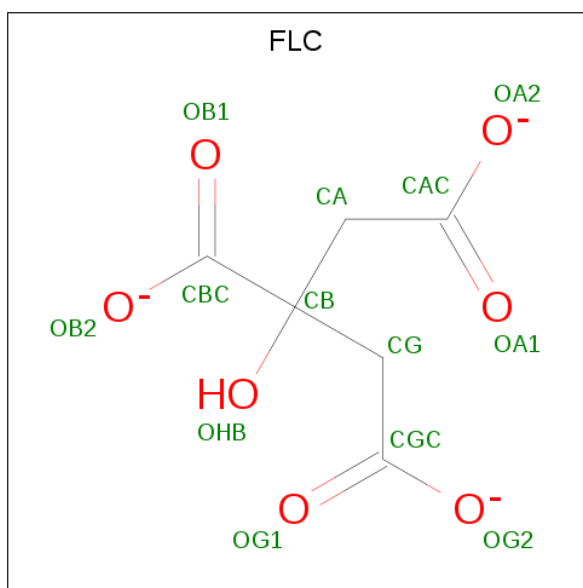
Mol	Chain	Residues	Atoms			ZeroOcc	AltConf
7	A	1	Total	C	O	0	0
			6	3	3		

- Molecule 8 is TETRAETHYLENE GLYCOL (three-letter code: PG4) (formula:  $C_8H_{18}O_5$ ).



Mol	Chain	Residues	Atoms			ZeroOcc	AltConf
8	A	1	Total	C	O	0	0
			13	8	5		

- Molecule 9 is CITRATE ANION (three-letter code: FLC) (formula:  $C_6H_5O_7$ ).





Mol	Chain	Residues	Atoms			ZeroOcc	AltConf
9	B	1	Total	C	O	0	0
			13	6	7		

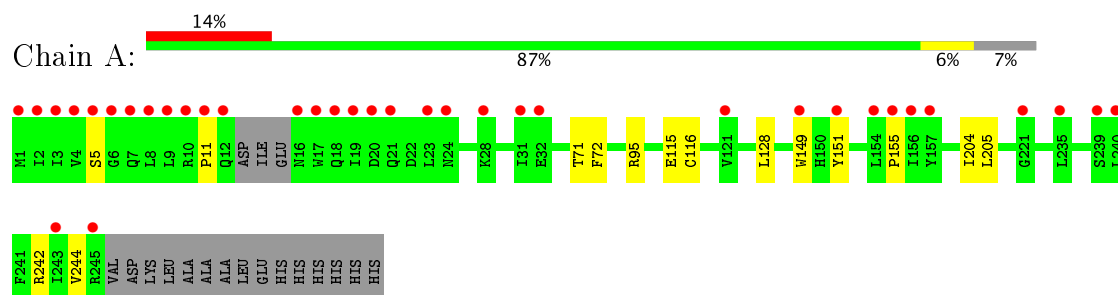
- Molecule 10 is water.

Mol	Chain	Residues	Atoms		ZeroOcc	AltConf
10	A	113	Total	O	0	3
			116	116		
10	B	91	Total	O	0	1
			92	92		

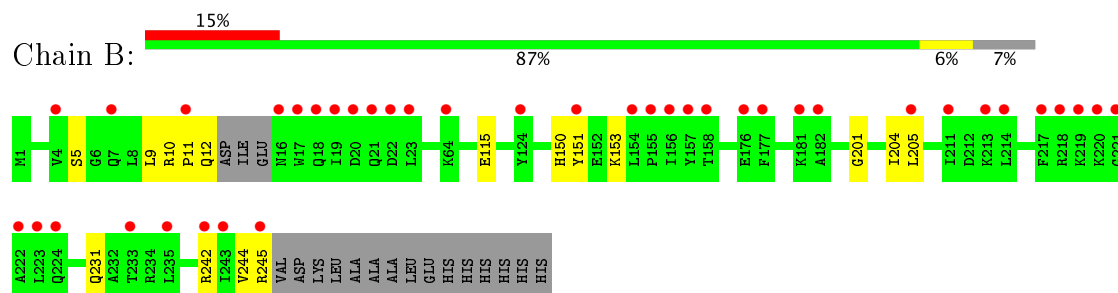
### 3 Residue-property plots [i](#)

These plots are drawn for all protein, RNA and DNA chains in the entry. The first graphic for a chain summarises the proportions of the various outlier classes displayed in the second graphic. The second graphic shows the sequence view annotated by issues in geometry and electron density. Residues are color-coded according to the number of geometric quality criteria for which they contain at least one outlier: green = 0, yellow = 1, orange = 2 and red = 3 or more. A red dot above a residue indicates a poor fit to the electron density ( $RSRZ > 2$ ). Stretches of 2 or more consecutive residues without any outlier are shown as a green connector. Residues present in the sample, but not in the model, are shown in grey.

- Molecule 1: Protein-glutamine gamma-glutamyltransferase



- Molecule 1: Protein-glutamine gamma-glutamyltransferase



## 4 Data and refinement statistics

Property	Value	Source
Space group	P 41	Depositor
Cell constants a, b, c, $\alpha$ , $\beta$ , $\gamma$	98.35Å 98.35Å 65.81Å 90.00° 90.00° 90.00°	Depositor
Resolution (Å)	36.57 – 1.86 39.39 – 1.86	Depositor EDS
% Data completeness (in resolution range)	84.8 (36.57-1.86) 84.8 (39.39-1.86)	Depositor EDS
$R_{merge}$	(Not available)	Depositor
$R_{sym}$	(Not available)	Depositor
$\langle I/\sigma(I) \rangle$ <sup>1</sup>	2.75 (at 1.87Å)	Xtriage
Refinement program	BUSTER-TNT 2.10, PHENIX 1.8.4-dev1565	Depositor
R, $R_{free}$	0.167 , 0.213 0.177 , 0.221	Depositor DCC
$R_{free}$ test set	2237 reflections (5.28%)	DCC
Wilson B-factor (Å <sup>2</sup> )	30.8	Xtriage
Anisotropy	0.842	Xtriage
Bulk solvent $k_{sol}$ (e/Å <sup>3</sup> ), $B_{sol}$ (Å <sup>2</sup> )	0.36 , 60.0	EDS
L-test for twinning <sup>2</sup>	$\langle  L  \rangle = 0.49$ , $\langle L^2 \rangle = 0.32$	Xtriage
Estimated twinning fraction	0.032 for h,-k,-l	Xtriage
$F_o, F_c$ correlation	0.97	EDS
Total number of atoms	4269	wwPDB-VP
Average B, all atoms (Å <sup>2</sup> )	52.0	wwPDB-VP

Xtriage's analysis on translational NCS is as follows: *The largest off-origin peak in the Patterson function is 3.95% of the height of the origin peak. No significant pseudotranslation is detected.*

<sup>1</sup>Intensities estimated from amplitudes.

<sup>2</sup>Theoretical values of  $\langle |L| \rangle$ ,  $\langle L^2 \rangle$  for acentric reflections are 0.5, 0.333 respectively for untwinned datasets, and 0.375, 0.2 for perfectly twinned datasets.

## 5 Model quality

### 5.1 Standard geometry

Bond lengths and bond angles in the following residue types are not validated in this section: GOL, ZN, DHL, EDO, PG4, PGE, SO4, FLC

The Z score for a bond length (or angle) is the number of standard deviations the observed value is removed from the expected value. A bond length (or angle) with  $|Z| > 5$  is considered an outlier worth inspection. RMSZ is the root-mean-square of all Z scores of the bond lengths (or angles).

Mol	Chain	Bond lengths		Bond angles	
		RMSZ	$\# Z  > 5$	RMSZ	$\# Z  > 5$
1	A	0.58	0/2044	0.63	0/2764
1	B	0.54	0/2048	0.62	0/2770
All	All	0.56	0/4092	0.62	0/5534

There are no bond length outliers.

There are no bond angle outliers.

There are no chirality outliers.

There are no planarity outliers.

### 5.2 Too-close contacts

In the following table, the Non-H and H(model) columns list the number of non-hydrogen atoms and hydrogen atoms in the chain respectively. The H(added) column lists the number of hydrogen atoms added and optimized by MolProbity. The Clashes column lists the number of clashes within the asymmetric unit, whereas Symm-Clashes lists symmetry related clashes.

Mol	Chain	Non-H	H(model)	H(added)	Clashes	Symm-Clashes
1	A	1993	0	1997	8	0
1	B	1997	0	1996	8	0
2	A	20	0	28	1	0
3	A	4	0	6	2	0
4	A	5	0	0	0	0
4	B	5	0	0	1	0
5	A	1	0	0	0	0
6	A	4	0	6	2	0
7	A	6	0	8	0	0
8	A	13	0	18	0	0
9	B	13	0	5	0	0

*Continued on next page...*

*Continued from previous page...*

Mol	Chain	Non-H	H(model)	H(added)	Clashes	Symm-Clashes
10	A	116	0	0	0	0
10	B	92	0	0	1	0
All	All	4269	0	4064	14	0

The all-atom clashscore is defined as the number of clashes found per 1000 atoms (including hydrogen atoms). The all-atom clashscore for this structure is 2.

The worst 5 of 14 close contacts within the same asymmetric unit are listed below, sorted by their clash magnitude.

Atom-1	Atom-2	Interatomic distance (Å)	Clash overlap (Å)
1:A:116[B]:CYS:SG	6:A:2006:DHL:N	2.40	0.94
1:B:115[B]:GLU:OE1	10:B:7189[B]:HOH:O	1.98	0.81
1:B:10:ARG:O	1:B:12:GLN:N	2.44	0.51
1:A:116[B]:CYS:CB	6:A:2006:DHL:HN1	2.28	0.47
1:A:151:TYR:O	1:B:150:HIS:HA	2.15	0.46

There are no symmetry-related clashes.

## 5.3 Torsion angles [i](#)

### 5.3.1 Protein backbone [i](#)

In the following table, the Percentiles column shows the percent Ramachandran outliers of the chain as a percentile score with respect to all X-ray entries followed by that with respect to entries of similar resolution.

The Analysed column shows the number of residues for which the backbone conformation was analysed, and the total number of residues.

Mol	Chain	Analysed	Favoured	Allowed	Outliers	Percentiles	
1	A	240/260 (92%)	226 (94%)	12 (5%)	2 (1%)	22	8
1	B	241/260 (93%)	228 (95%)	10 (4%)	3 (1%)	15	4
All	All	481/520 (92%)	454 (94%)	22 (5%)	5 (1%)	17	5

All (5) Ramachandran outliers are listed below:

Mol	Chain	Res	Type
1	B	11	PRO
1	B	5	SER

*Continued on next page...*

*Continued from previous page...*

Mol	Chain	Res	Type
1	A	11	PRO
1	B	153	LYS
1	A	155	PRO

### 5.3.2 Protein sidechains ⓘ

In the following table, the Percentiles column shows the percent sidechain outliers of the chain as a percentile score with respect to all X-ray entries followed by that with respect to entries of similar resolution.

The Analysed column shows the number of residues for which the sidechain conformation was analysed, and the total number of residues.

Mol	Chain	Analysed	Rotameric	Outliers	Percentiles	
1	A	211/224 (94%)	206 (98%)	5 (2%)	54	37
1	B	212/224 (95%)	210 (99%)	2 (1%)	82	77
All	All	423/448 (94%)	416 (98%)	7 (2%)	66	52

5 of 7 residues with a non-rotameric sidechain are listed below:

Mol	Chain	Res	Type
1	A	128	LEU
1	B	151	TYR
1	A	244	VAL
1	A	95	ARG
1	B	9	LEU

Some sidechains can be flipped to improve hydrogen bonding and reduce clashes. There are no such sidechains identified.

### 5.3.3 RNA ⓘ

There are no RNA molecules in this entry.

## 5.4 Non-standard residues in protein, DNA, RNA chains ⓘ

There are no non-standard protein/DNA/RNA residues in this entry.

## 5.5 Carbohydrates [i](#)

There are no carbohydrates in this entry.

## 5.6 Ligand geometry [i](#)

Of 10 ligands modelled in this entry, 1 is monoatomic - leaving 9 for Mogul analysis.

In the following table, the Counts columns list the number of bonds (or angles) for which Mogul statistics could be retrieved, the number of bonds (or angles) that are observed in the model and the number of bonds (or angles) that are defined in the Chemical Component Dictionary. The Link column lists molecule types, if any, to which the group is linked. The Z score for a bond length (or angle) is the number of standard deviations the observed value is removed from the expected value. A bond length (or angle) with  $|Z| > 2$  is considered an outlier worth inspection. RMSZ is the root-mean-square of all Z scores of the bond lengths (or angles).

Mol	Type	Chain	Res	Link	Bond lengths			Bond angles		
					Counts	RMSZ	# Z  > 2	Counts	RMSZ	# Z  > 2
2	PGE	A	2001	-	9,9,9	0.39	0	8,8,8	0.52	0
2	PGE	A	2002	-	9,9,9	0.46	0	8,8,8	0.41	0
3	EDO	A	2003	-	3,3,3	0.63	0	2,2,2	0.06	0
4	SO4	A	2004	-	4,4,4	0.24	0	6,6,6	0.09	0
6	DHL	A	2006	1	3,3,3	0.42	0	1,2,2	0.31	0
7	GOL	A	2007	-	5,5,5	0.30	0	5,5,5	0.54	0
8	PG4	A	2008	-	12,12,12	0.40	0	11,11,11	0.62	0
9	FLC	B	7001	-	3,12,12	0.57	0	3,17,17	0.28	0
4	SO4	B	7002	-	4,4,4	0.27	0	6,6,6	0.25	0

In the following table, the Chirals column lists the number of chiral outliers, the number of chiral centers analysed, the number of these observed in the model and the number defined in the Chemical Component Dictionary. Similar counts are reported in the Torsion and Rings columns. '-' means no outliers of that kind were identified.

Mol	Type	Chain	Res	Link	Chirals	Torsions	Rings
2	PGE	A	2001	-	-	0/7/7/7	0/0/0/0
2	PGE	A	2002	-	-	0/7/7/7	0/0/0/0
3	EDO	A	2003	-	-	0/1/1/1	0/0/0/0
4	SO4	A	2004	-	-	0/0/0/0	0/0/0/0
6	DHL	A	2006	1	-	0/1/1/1	0/0/0/0
7	GOL	A	2007	-	-	0/4/4/4	0/0/0/0
8	PG4	A	2008	-	-	0/10/10/10	0/0/0/0
9	FLC	B	7001	-	-	0/6/16/16	0/0/0/0
4	SO4	B	7002	-	-	0/0/0/0	0/0/0/0

There are no bond length outliers.

There are no bond angle outliers.

There are no chirality outliers.

There are no torsion outliers.

There are no ring outliers.

4 monomers are involved in 6 short contacts:

Mol	Chain	Res	Type	Clashes	Symm-Clashes
2	A	2001	PGE	1	0
3	A	2003	EDO	2	0
6	A	2006	DHL	2	0
4	B	7002	SO4	1	0

## 5.7 Other polymers [i](#)

There are no such residues in this entry.

## 5.8 Polymer linkage issues [i](#)

There are no chain breaks in this entry.



## 6 Fit of model and data [i](#)

### 6.1 Protein, DNA and RNA chains [i](#)

In the following table, the column labelled ‘#RSRZ> 2’ contains the number (and percentage) of RSRZ outliers, followed by percent RSRZ outliers for the chain as percentile scores relative to all X-ray entries and entries of similar resolution. The OWAB column contains the minimum, median, 95<sup>th</sup> percentile and maximum values of the occupancy-weighted average B-factor per residue. The column labelled ‘Q< 0.9’ lists the number of (and percentage) of residues with an average occupancy less than 0.9.

Mol	Chain	Analysed	<RSRZ>	#RSRZ>2	OWAB(Å <sup>2</sup> )	Q<0.9
1	A	242/260 (93%)	0.63	36 (14%) 3 3	24, 42, 100, 145	0
1	B	242/260 (93%)	0.74	40 (16%) 2 2	25, 47, 95, 113	0
All	All	484/520 (93%)	0.68	76 (15%) 2 2	24, 44, 100, 145	0

The worst 5 of 76 RSRZ outliers are listed below:

Mol	Chain	Res	Type	RSRZ
1	B	223	LEU	11.1
1	A	8	LEU	8.3
1	A	9	LEU	6.6
1	B	222	ALA	5.6
1	A	17	TRP	5.4

### 6.2 Non-standard residues in protein, DNA, RNA chains [i](#)

There are no non-standard protein/DNA/RNA residues in this entry.

### 6.3 Carbohydrates [i](#)

There are no carbohydrates in this entry.

### 6.4 Ligands [i](#)

In the following table, the Atoms column lists the number of modelled atoms in the group and the number defined in the chemical component dictionary. LLDF column lists the quality of electron density of the group with respect to its neighbouring residues in protein, DNA or RNA chains. The B-factors column lists the minimum, median, 95<sup>th</sup> percentile and maximum values of B factors of atoms in the group. The column labelled ‘Q< 0.9’ lists the number of atoms with occupancy less than 0.9.

Mol	Type	Chain	Res	Atoms	RSCC	RSR	LLDF	B-factors( $\text{\AA}^2$ )	Q<0.9
4	SO4	A	2004	5/5	0.95	0.26	15.79	84,94,101,107	0
6	DHL	A	2006	4/4	0.85	0.16	1.42	40,45,50,76	4
3	EDO	A	2003	4/4	0.76	0.16	1.27	34,59,67,76	0
4	SO4	B	7002	5/5	0.94	0.17	1.25	77,78,86,94	0
2	PGE	A	2002	10/10	0.92	0.10	1.02	40,52,71,72	0
8	PG4	A	2008	13/13	0.89	0.24	0.79	42,52,71,74	0
2	PGE	A	2001	10/10	0.96	0.17	-0.11	43,51,61,62	0
7	GOL	A	2007	6/6	0.69	0.18	-	67,68,71,79	0
5	ZN	A	2005	1/1	0.94	0.08	-	80,80,80,80	0
9	FLC	B	7001	13/13	0.81	0.21	-	59,80,87,87	0

## 6.5 Other polymers [i](#)

There are no such residues in this entry.