



Full wwPDB X-ray Structure Validation Report ⓘ

Sep 10, 2017 – 05:12 PM EDT

PDB ID : 4PA6
Title : Structure of NavMS pore and C-terminal domain crystallised in the presence of channel blocking compound
Authors : Naylor, C.E.; Bagneris, C.; Wallace, B.A.
Deposited on : unknown
Resolution : 3.36 Å(reported)

This is a Full wwPDB X-ray Structure Validation Report for a publicly released PDB entry.

We welcome your comments at validation@mail.wwpdb.org

A user guide is available at

<http://wwpdb.org/validation/2016/XrayValidationReportHelp>

with specific help available everywhere you see the ⓘ symbol.

The following versions of software and data (see [references ⓘ](#)) were used in the production of this report:

MolProbity : 4.02b-467
Mogul : 1.7.2 (RC1), CSD as538be (2017)
Xtriage (Phenix) : 1.9-1692
EDS : rb-20029824
Percentile statistics : 20161228.v01 (using entries in the PDB archive December 28th 2016)
Refmac : 5.8.0135
CCP4 : 6.5.0
Ideal geometry (proteins) : Engh & Huber (2001)
Ideal geometry (DNA, RNA) : Parkinson et al. (1996)
Validation Pipeline (wwPDB-VP) : rb-20029824

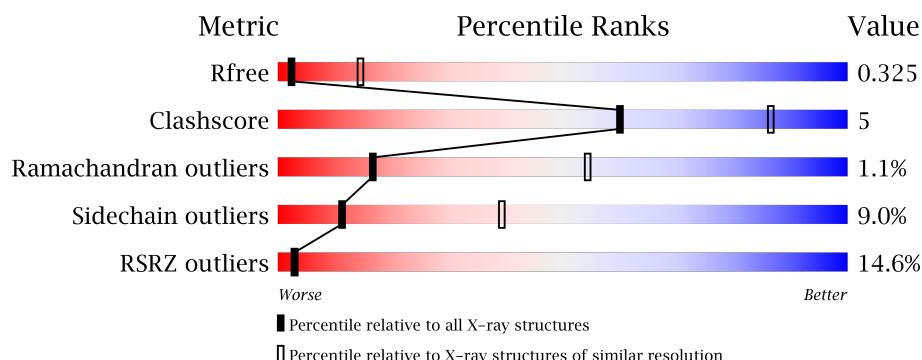
1 Overall quality at a glance

The following experimental techniques were used to determine the structure:

X-RAY DIFFRACTION

The reported resolution of this entry is 3.36 Å.

Percentile scores (ranging between 0-100) for global validation metrics of the entry are shown in the following graphic. The table shows the number of entries on which the scores are based.



Metric	Whole archive (#Entries)	Similar resolution (#Entries, resolution range(Å))
R_{free}	100719	1156 (3.42-3.30)
Clashscore	112137	1231 (3.42-3.30)
Ramachandran outliers	110173	1212 (3.42-3.30)
Sidechain outliers	110143	1211 (3.42-3.30)
RSRZ outliers	101464	1165 (3.42-3.30)

The table below summarises the geometric issues observed across the polymeric chains and their fit to the electron density. The red, orange, yellow and green segments on the lower bar indicate the fraction of residues that contain outliers for ≥ 3 , 2, 1 and 0 types of geometric quality criteria. A grey segment represents the fraction of residues that are not modelled. The numeric value for each fraction is indicated below the corresponding segment, with a dot representing fractions $\leq 5\%$. The upper red bar (where present) indicates the fraction of residues that have poor fit to the electron density. The numeric value is given above the bar.

Mol	Chain	Length	Quality of chain
1	A	149	<div> <div>11%</div> <div> <div>48%</div> <div>14%</div> <div>38%</div> </div> </div>
1	B	149	<div> <div>9%</div> <div> <div>44%</div> <div>17%</div> <div>40%</div> </div> </div>
1	C	149	<div> <div>7%</div> <div> <div>50%</div> <div>10%</div> <div>39%</div> </div> </div>
1	D	149	<div> <div>7%</div> <div> <div>49%</div> <div>11%</div> <div>39%</div> </div> </div>

The following table lists non-polymeric compounds, carbohydrate monomers and non-standard residues in protein, DNA, RNA chains that are outliers for geometric or electron-density-fit crite-

ria:

Mol	Type	Chain	Res	Chirality	Geometry	Clashes	Electron density
3	12P	A	302	-	-	-	X

2 Entry composition

There are 5 unique types of molecules in this entry. The entry contains 2950 atoms, of which 0 are hydrogens and 0 are deuteriums.

In the tables below, the ZeroOcc column contains the number of atoms modelled with zero occupancy, the AltConf column contains the number of residues with at least one atom in alternate conformation and the Trace column contains the number of residues modelled with at most 2 atoms.

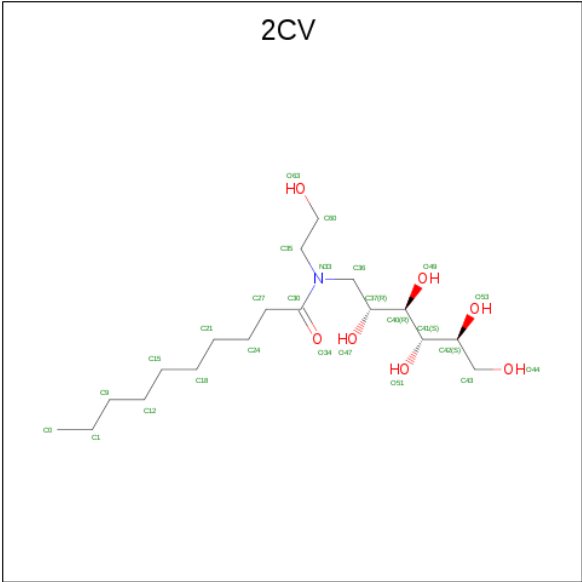
- Molecule 1 is a protein called Ion transport protein.

Mol	Chain	Residues	Atoms					ZeroOcc	AltConf	Trace
1	A	92	Total	C	N	O	S	0	0	0
			718	488	106	119	5			
1	B	90	Total	C	N	O	S	0	0	0
			711	483	104	119	5			
1	C	91	Total	C	N	O	S	0	0	0
			715	485	105	120	5			
1	D	91	Total	C	N	O	S	0	0	0
			712	482	105	120	5			

There are 16 discrepancies between the modelled and reference sequences:

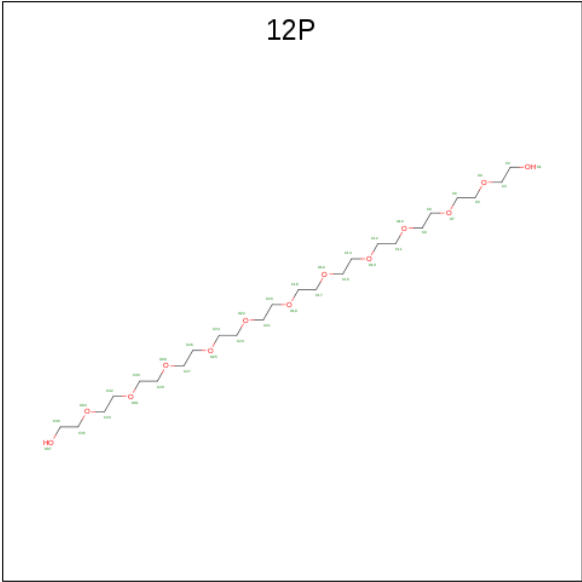
Chain	Residue	Modelled	Actual	Comment	Reference
A	126	GLY	-	expression tag	UNP A0L5S6
A	127	SER	-	expression tag	UNP A0L5S6
A	128	HIS	-	expression tag	UNP A0L5S6
A	129	MET	-	expression tag	UNP A0L5S6
B	126	GLY	-	expression tag	UNP A0L5S6
B	127	SER	-	expression tag	UNP A0L5S6
B	128	HIS	-	expression tag	UNP A0L5S6
B	129	MET	-	expression tag	UNP A0L5S6
C	126	GLY	-	expression tag	UNP A0L5S6
C	127	SER	-	expression tag	UNP A0L5S6
C	128	HIS	-	expression tag	UNP A0L5S6
C	129	MET	-	expression tag	UNP A0L5S6
D	126	GLY	-	expression tag	UNP A0L5S6
D	127	SER	-	expression tag	UNP A0L5S6
D	128	HIS	-	expression tag	UNP A0L5S6
D	129	MET	-	expression tag	UNP A0L5S6

- Molecule 2 is HEGA-10 (three-letter code: 2CV) (formula: C₁₈H₃₇NO₇).



Mol	Chain	Residues	Atoms				ZeroOcc	AltConf
2	A	1	Total	C	N	O	0	0
			15	10	1	4		
2	B	1	Total	C	N	O	0	0
			15	10	1	4		
2	C	1	Total	C	N	O	0	0
			15	10	1	4		
2	D	1	Total	C	N	O	0	0
			15	10	1	4		

- Molecule 3 is DODECAETHYLENE GLYCOL (three-letter code: 12P) (formula: C₂₄H₅₀O₁₃).



Mol	Chain	Residues	Atoms			ZeroOcc	AltConf
3	A	1	Total	C	O	0	0
			16	10	6		

- Molecule 4 is SODIUM ION (three-letter code: NA) (formula: Na).

Mol	Chain	Residues	Atoms		ZeroOcc	AltConf
4	B	1	Total	Na	0	0
			1	1		
4	A	1	Total	Na	0	0
			1	1		
4	C	2	Total	Na	0	0
			2	2		

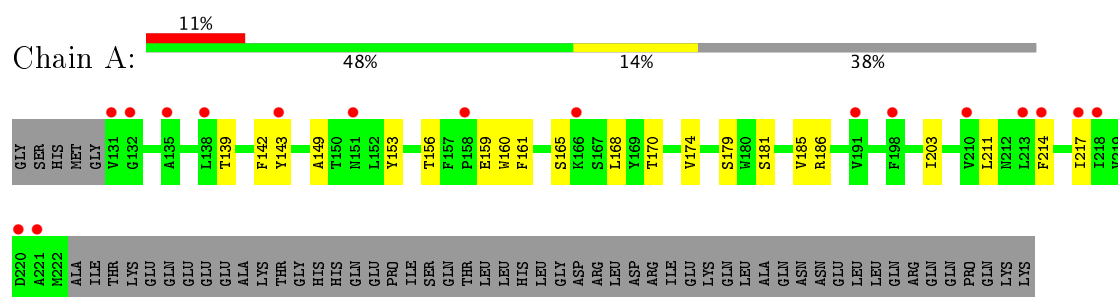
- Molecule 5 is water.

Mol	Chain	Residues	Atoms		ZeroOcc	AltConf
5	A	1	Total	O	0	0
			1	1		
5	B	2	Total	O	0	0
			2	2		
5	C	5	Total	O	0	0
			5	5		
5	D	6	Total	O	0	0
			6	6		

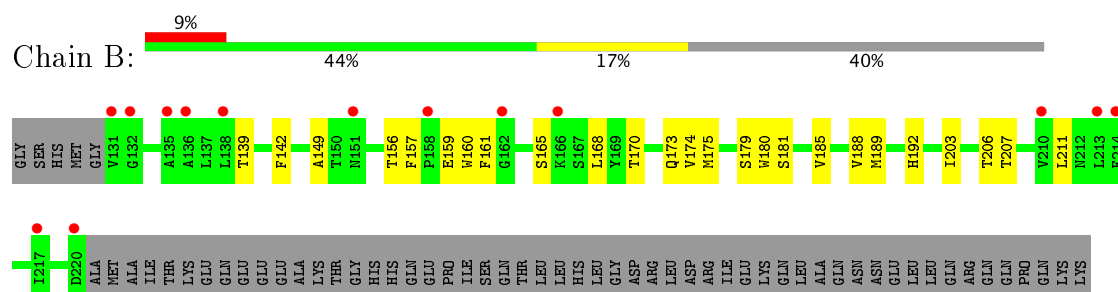
3 Residue-property plots

These plots are drawn for all protein, RNA and DNA chains in the entry. The first graphic for a chain summarises the proportions of the various outlier classes displayed in the second graphic. The second graphic shows the sequence view annotated by issues in geometry and electron density. Residues are color-coded according to the number of geometric quality criteria for which they contain at least one outlier: green = 0, yellow = 1, orange = 2 and red = 3 or more. A red dot above a residue indicates a poor fit to the electron density ($RSRZ > 2$). Stretches of 2 or more consecutive residues without any outlier are shown as a green connector. Residues present in the sample, but not in the model, are shown in grey.

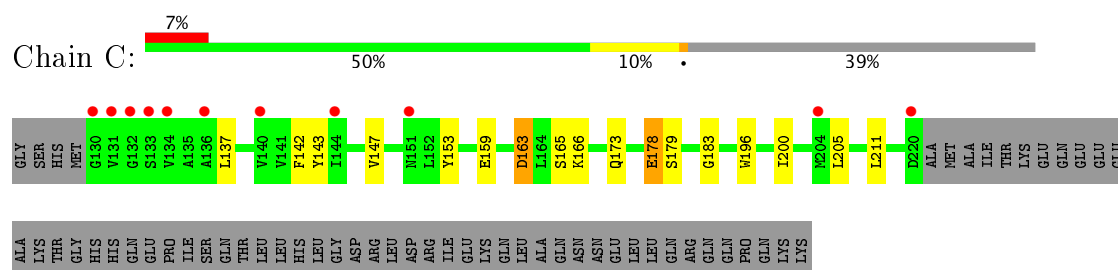
• Molecule 1: Ion transport protein



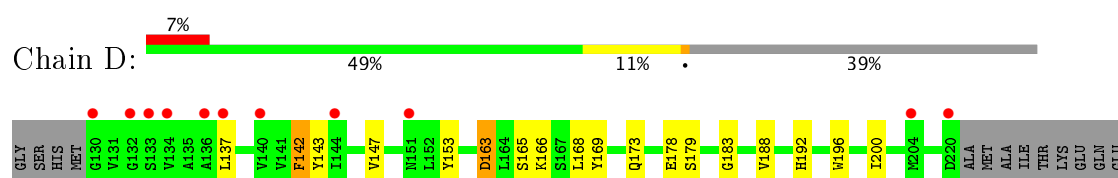
• Molecule 1: Ion transport protein



• Molecule 1: Ion transport protein



• Molecule 1: Ion transport protein



GLU	GLU	ALA	LYS	THR	GLY	HIS	HIS	GLN	GLU	PRO	ILE	SER	GLN	THR	LEU	LEU	HIS	HIS	LEU	GLY	ASP	ARG	LEU	ASP	ARG	ILE	GLU	LYS	GLN	LEU	ALA	GLN	ASN	ASN	GLU	LEU	LEU	GLN	ARG	GLN	GLN	PRO	GLN	LYS	LYS
-----	-----	-----	-----	-----	-----	-----	-----	-----	-----	-----	-----	-----	-----	-----	-----	-----	-----	-----	-----	-----	-----	-----	-----	-----	-----	-----	-----	-----	-----	-----	-----	-----	-----	-----	-----	-----	-----	-----	-----	-----	-----	-----	-----	-----	-----

GLOBAL-STATISTICS INFOmissingINFO

4 Model quality [i](#)

4.1 Standard geometry [i](#)

Bond lengths and bond angles in the following residue types are not validated in this section: 12P, NA, 2CV

The Z score for a bond length (or angle) is the number of standard deviations the observed value is removed from the expected value. A bond length (or angle) with $|Z| > 5$ is considered an outlier worth inspection. RMSZ is the root-mean-square of all Z scores of the bond lengths (or angles).

Mol	Chain	Bond lengths		Bond angles	
		RMSZ	$\# Z > 5$	RMSZ	$\# Z > 5$
1	A	0.49	0/740	0.68	0/1015
1	B	0.49	0/733	0.67	0/1005
1	C	0.52	0/737	0.67	0/1010
1	D	0.52	0/734	0.67	0/1006
All	All	0.51	0/2944	0.67	0/4036

There are no bond length outliers.

There are no bond angle outliers.

There are no chirality outliers.

There are no planarity outliers.

4.2 Too-close contacts [i](#)

In the following table, the Non-H and H(model) columns list the number of non-hydrogen atoms and hydrogen atoms in the chain respectively. The H(added) column lists the number of hydrogen atoms added and optimized by MolProbity. The Clashes column lists the number of clashes within the asymmetric unit, whereas Symm-Clashes lists symmetry related clashes.

Mol	Chain	Non-H	H(model)	H(added)	Clashes	Symm-Clashes
1	A	718	0	726	8	0
1	B	711	0	721	12	0
1	C	715	0	724	4	0
1	D	712	0	715	7	0
2	A	15	0	16	1	0
2	B	15	0	16	0	0
2	C	15	0	16	2	0
2	D	15	0	16	0	0
3	A	16	0	21	0	0

Continued on next page...

Continued from previous page...

Mol	Chain	Non-H	H(model)	H(added)	Clashes	Symm-Clashes
4	A	1	0	0	0	0
4	B	1	0	0	0	0
4	C	2	0	0	0	0
5	A	1	0	0	0	0
5	B	2	0	0	0	0
5	C	5	0	0	0	0
5	D	6	0	0	0	0
All	All	2950	0	2971	31	0

The all-atom clashscore is defined as the number of clashes found per 1000 atoms (including hydrogen atoms). The all-atom clashscore for this structure is 5.

All (31) close contacts within the same asymmetric unit are listed below, sorted by their clash magnitude.

Atom-1	Atom-2	Interatomic distance (Å)	Clash overlap (Å)
2:C:301:2CV:H212	1:D:169:TYR:HB2	1.76	0.68
1:C:196:TRP:HB2	1:C:200:ILE:HD12	1.88	0.56
1:C:179:SER:HB3	1:C:183:GLY:HA3	1.89	0.55
2:C:301:2CV:O34	2:C:301:2CV:H37	2.07	0.55
1:A:160:TRP:HB3	1:A:170:THR:HG21	1.89	0.55
1:D:179:SER:HB3	1:D:183:GLY:HA3	1.88	0.54
1:D:196:TRP:HB2	1:D:200:ILE:HD12	1.88	0.54
1:B:160:TRP:HB3	1:B:170:THR:HG21	1.91	0.53
1:A:149:ALA:HB1	1:A:161:PHE:CD1	2.45	0.52
1:B:181:SER:HA	1:B:185:VAL:HB	1.96	0.47
1:B:157:PHE:CZ	1:B:188:VAL:HA	2.51	0.46
1:B:149:ALA:HB1	1:B:161:PHE:CD1	2.52	0.45
1:C:163:ASP:H	1:C:166:LYS:HD2	1.80	0.45
1:B:175:MET:HG3	1:B:206:THR:HB	1.99	0.44
1:A:174:VAL:HG13	1:A:203:ILE:HD11	1.98	0.44
1:B:175:MET:O	1:B:207:THR:HG22	2.18	0.44
1:A:165:SER:HA	1:A:168:LEU:HD12	2.00	0.43
1:B:165:SER:HA	1:B:168:LEU:HD12	2.01	0.43
1:A:214:PHE:HA	1:A:217:ILE:HD12	2.01	0.43
1:C:143:TYR:O	1:C:147:VAL:HG23	2.18	0.43
1:B:180:TRP:HE3	1:B:185:VAL:HG21	1.84	0.42
1:A:181:SER:HA	1:A:185:VAL:HB	2.01	0.42
1:A:181:SER:HB3	1:B:173:GLN:HG3	2.00	0.42
1:D:143:TYR:O	1:D:147:VAL:HG23	2.19	0.42
2:A:301:2CV:O34	2:A:301:2CV:H37	2.19	0.42
1:D:188:VAL:HG13	1:D:192:HIS:HD2	1.85	0.41

Continued on next page...

Continued from previous page...

Atom-1	Atom-2	Interatomic distance (Å)	Clash overlap (Å)
1:D:163:ASP:H	1:D:166:LYS:HD2	1.86	0.41
1:B:174:VAL:HG13	1:B:203:ILE:HD11	2.03	0.41
1:B:189:MET:HA	1:B:192:HIS:O	2.21	0.40
1:D:142:PHE:HD2	1:D:168:LEU:HD23	1.87	0.40
1:A:186:ARG:NH2	1:B:170:THR:HG23	2.36	0.40

There are no symmetry-related clashes.

4.3 Torsion angles [i](#)

4.3.1 Protein backbone [i](#)

In the following table, the Percentiles column shows the percent Ramachandran outliers of the chain as a percentile score with respect to all X-ray entries followed by that with respect to entries of similar resolution.

The Analysed column shows the number of residues for which the backbone conformation was analysed, and the total number of residues.

Mol	Chain	Analysed	Favoured	Allowed	Outliers	Percentiles	
1	A	90/149 (60%)	81 (90%)	8 (9%)	1 (1%)	17	54
1	B	88/149 (59%)	81 (92%)	6 (7%)	1 (1%)	17	54
1	C	89/149 (60%)	83 (93%)	5 (6%)	1 (1%)	17	54
1	D	89/149 (60%)	83 (93%)	5 (6%)	1 (1%)	17	54
All	All	356/596 (60%)	328 (92%)	24 (7%)	4 (1%)	17	54

All (4) Ramachandran outliers are listed below:

Mol	Chain	Res	Type
1	A	179	SER
1	B	179	SER
1	C	178	GLU
1	D	178	GLU

4.3.2 Protein sidechains [i](#)

In the following table, the Percentiles column shows the percent sidechain outliers of the chain as a percentile score with respect to all X-ray entries followed by that with respect to entries of similar resolution.

The Analysed column shows the number of residues for which the sidechain conformation was analysed, and the total number of residues.

Mol	Chain	Analysed	Rotameric	Outliers	Percentiles	
1	A	77/129 (60%)	70 (91%)	7 (9%)	11	38
1	B	78/129 (60%)	73 (94%)	5 (6%)	20	57
1	C	78/129 (60%)	68 (87%)	10 (13%)	5	22
1	D	77/129 (60%)	71 (92%)	6 (8%)	15	47
All	All	310/516 (60%)	282 (91%)	28 (9%)	11	39

All (28) residues with a non-rotameric sidechain are listed below:

Mol	Chain	Res	Type
1	A	139	THR
1	A	142	PHE
1	A	143	TYR
1	A	153	TYR
1	A	156	THR
1	A	159	GLU
1	A	211	LEU
1	B	139	THR
1	B	142	PHE
1	B	156	THR
1	B	159	GLU
1	B	211	LEU
1	C	137	LEU
1	C	142	PHE
1	C	153	TYR
1	C	159	GLU
1	C	163	ASP
1	C	165	SER
1	C	173	GLN
1	C	178	GLU
1	C	205	LEU
1	C	211	LEU
1	D	137	LEU
1	D	142	PHE
1	D	153	TYR
1	D	163	ASP
1	D	165	SER
1	D	173	GLN

Some sidechains can be flipped to improve hydrogen bonding and reduce clashes. All (1) such

sidechains are listed below:

Mol	Chain	Res	Type
1	D	192	HIS

4.3.3 RNA [i](#)

There are no RNA molecules in this entry.

4.4 Non-standard residues in protein, DNA, RNA chains [i](#)

There are no non-standard protein/DNA/RNA residues in this entry.

4.5 Carbohydrates [i](#)

There are no carbohydrates in this entry.

4.6 Ligand geometry [i](#)

Of 9 ligands modelled in this entry, 4 are monoatomic - leaving 5 for Mogul analysis.

In the following table, the Counts columns list the number of bonds (or angles) for which Mogul statistics could be retrieved, the number of bonds (or angles) that are observed in the model and the number of bonds (or angles) that are defined in the chemical component dictionary. The Link column lists molecule types, if any, to which the group is linked. The Z score for a bond length (or angle) is the number of standard deviations the observed value is removed from the expected value. A bond length (or angle) with $|Z| > 2$ is considered an outlier worth inspection. RMSZ is the root-mean-square of all Z scores of the bond lengths (or angles).

Mol	Type	Chain	Res	Link	Bond lengths			Bond angles		
					Counts	RMSZ	$\# Z > 2$	Counts	RMSZ	$\# Z > 2$
2	2CV	A	301	-	14,14,25	0.22	0	15,16,30	1.21	2 (13%)
3	12P	A	302	-	15,15,36	0.17	0	14,14,35	0.11	0
2	2CV	B	301	-	14,14,25	0.21	0	15,16,30	0.92	1 (6%)
2	2CV	C	301	-	14,14,25	0.24	0	15,16,30	1.71	2 (13%)
2	2CV	D	300	-	14,14,25	0.23	0	15,16,30	0.71	0

In the following table, the Chirals column lists the number of chiral outliers, the number of chiral centers analysed, the number of these observed in the model and the number defined in the chemical component dictionary. Similar counts are reported in the Torsion and Rings columns. '-' means no outliers of that kind were identified.

Mol	Type	Chain	Res	Link	Chirals	Torsions	Rings
2	2CV	A	301	-	-	0/17/17/34	0/0/0/0
3	12P	A	302	-	-	0/13/13/34	0/0/0/0
2	2CV	B	301	-	-	0/17/17/34	0/0/0/0
2	2CV	C	301	-	-	0/17/17/34	0/0/0/0
2	2CV	D	300	-	-	0/17/17/34	0/0/0/0

There are no bond length outliers.

All (5) bond angle outliers are listed below:

Mol	Chain	Res	Type	Atoms	Z	Observed(°)	Ideal(°)
2	C	301	2CV	C35-N33-C36	-4.36	111.30	116.40
2	A	301	2CV	C35-N33-C36	-2.56	113.40	116.40
2	B	301	2CV	C37-C36-N33	2.63	116.05	113.14
2	A	301	2CV	C37-C36-N33	3.50	117.02	113.14
2	C	301	2CV	C37-C36-N33	4.50	118.12	113.14

There are no chirality outliers.

There are no torsion outliers.

There are no ring outliers.

2 monomers are involved in 3 short contacts:

Mol	Chain	Res	Type	Clashes	Symm-Clashes
2	A	301	2CV	1	0
2	C	301	2CV	2	0

4.7 Other polymers [i](#)

There are no such residues in this entry.

4.8 Polymer linkage issues [i](#)

There are no chain breaks in this entry.

5 Fit of model and data ⓘ

5.1 Protein, DNA and RNA chains ⓘ

In the following table, the column labelled ‘#RSRZ> 2’ contains the number (and percentage) of RSRZ outliers, followed by percent RSRZ outliers for the chain as percentile scores relative to all X-ray entries and entries of similar resolution. The OWAB column contains the minimum, median, 95th percentile and maximum values of the occupancy-weighted average B-factor per residue. The column labelled ‘Q< 0.9’ lists the number of (and percentage) of residues with an average occupancy less than 0.9.

Mol	Chain	Analysed	<RSRZ>	#RSRZ>2	OWAB(Å ²)	Q<0.9
1	A	92/149 (61%)	0.84	17 (18%) 1 2	44, 59, 140, 214	0
1	B	90/149 (60%)	0.76	14 (15%) 2 2	45, 60, 138, 203	0
1	C	91/149 (61%)	0.78	11 (12%) 5 4	43, 62, 130, 197	0
1	D	91/149 (61%)	0.71	11 (12%) 5 4	43, 60, 134, 201	0
All	All	364/596 (61%)	0.77	53 (14%) 3 3	43, 60, 140, 214	0

All (53) RSRZ outliers are listed below:

Mol	Chain	Res	Type	RSRZ
1	D	133	SER	6.5
1	A	131	VAL	6.4
1	C	133	SER	6.0
1	A	132	GLY	5.5
1	C	220	ASP	5.4
1	B	131	VAL	5.3
1	B	132	GLY	4.2
1	D	220	ASP	4.2
1	A	151	ASN	3.9
1	C	134	VAL	3.6
1	A	217	ILE	3.4
1	D	204	MET	3.2
1	A	221	ALA	3.2
1	B	151	ASN	3.1
1	B	217	ILE	3.1
1	B	158	PRO	3.1
1	B	135	ALA	3.1
1	C	204	MET	3.0
1	B	214	PHE	2.9
1	C	132	GLY	2.9
1	B	210	VAL	2.9

Continued on next page...

Continued from previous page...

Mol	Chain	Res	Type	RSRZ
1	A	158	PRO	2.9
1	D	134	VAL	2.8
1	D	144	ILE	2.8
1	D	137	LEU	2.8
1	A	213	LEU	2.8
1	B	213	LEU	2.8
1	A	135	ALA	2.8
1	D	140	VAL	2.7
1	C	130	GLY	2.7
1	A	210	VAL	2.7
1	A	220	ASP	2.6
1	D	132	GLY	2.6
1	D	130	GLY	2.6
1	B	138	LEU	2.6
1	C	144	ILE	2.4
1	C	140	VAL	2.4
1	A	191	VAL	2.3
1	B	162	GLY	2.3
1	A	198	PHE	2.3
1	C	136	ALA	2.3
1	D	136	ALA	2.3
1	C	131	VAL	2.2
1	A	214	PHE	2.2
1	A	143	TYR	2.2
1	A	218	ILE	2.2
1	B	136	ALA	2.2
1	A	166	LYS	2.1
1	B	166	LYS	2.1
1	C	151	ASN	2.1
1	D	151	ASN	2.1
1	A	138	LEU	2.1
1	B	220	ASP	2.0

5.2 Non-standard residues in protein, DNA, RNA chains ⓘ

There are no non-standard protein/DNA/RNA residues in this entry.

5.3 Carbohydrates ⓘ

There are no carbohydrates in this entry.

5.4 Ligands

In the following table, the Atoms column lists the number of modelled atoms in the group and the number defined in the chemical component dictionary. LLDF column lists the quality of electron density of the group with respect to its neighbouring residues in protein, DNA or RNA chains. The B-factors column lists the minimum, median, 95th percentile and maximum values of B factors of atoms in the group. The column labelled 'Q< 0.9' lists the number of atoms with occupancy less than 0.9.

Mol	Type	Chain	Res	Atoms	RSCC	RSR	LLDF	B-factors(Å ²)	Q<0.9
3	12P	A	302	16/37	0.69	0.46	1.85	74,85,89,89	0
2	2CV	D	300	15/26	0.67	0.38	1.82	86,92,95,97	0
2	2CV	C	301	15/26	0.71	0.35	1.27	89,98,107,109	0
2	2CV	B	301	15/26	0.81	0.35	0.55	92,98,103,106	0
2	2CV	A	301	15/26	0.81	0.31	0.21	97,102,104,104	0
4	NA	C	302	1/1	0.98	0.84	-	50,50,50,50	1
4	NA	B	302	1/1	1.00	0.66	-	51,51,51,51	1
4	NA	C	303	1/1	0.97	0.66	-	54,54,54,54	1
4	NA	A	303	1/1	0.95	0.80	-	52,52,52,52	1

5.5 Other polymers

There are no such residues in this entry.