



Full wwPDB X-ray Structure Validation Report ⓘ

Oct 14, 2017 – 06:50 PM EDT

PDB ID : 2PGZ
Title : Crystal structure of Cocaine bound to an ACh-Binding Protein
Authors : Hansen, S.B.; Taylor, P.
Deposited on : unknown
Resolution : 1.76 Å(reported)

This is a Full wwPDB X-ray Structure Validation Report for a publicly released PDB entry.

We welcome your comments at validation@mail.wwpdb.org

A user guide is available at

<http://wwpdb.org/validation/2016/XrayValidationReportHelp>

with specific help available everywhere you see the ⓘ symbol.

The following versions of software and data (see [references ⓘ](#)) were used in the production of this report:

MolProbity : 4.02b-467
Mogul : 1.7.2 (RC1), CSD as538be (2017)
Xtriage (Phenix) : 1.9-1692
EDS : rb-20030345
Percentile statistics : 20161228.v01 (using entries in the PDB archive December 28th 2016)
Refmac : 5.8.0135
CCP4 : 6.5.0
Ideal geometry (proteins) : Engh & Huber (2001)
Ideal geometry (DNA, RNA) : Parkinson et al. (1996)
Validation Pipeline (wwPDB-VP) : rb-20030345

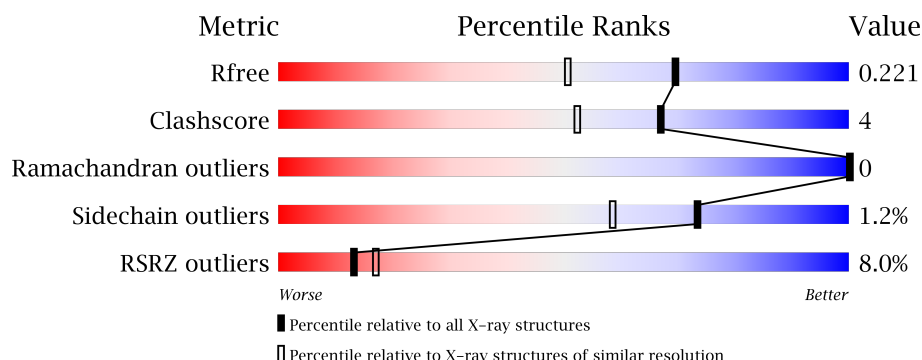
1 Overall quality at a glance

The following experimental techniques were used to determine the structure:

X-RAY DIFFRACTION

The reported resolution of this entry is 1.76 Å.

Percentile scores (ranging between 0-100) for global validation metrics of the entry are shown in the following graphic. The table shows the number of entries on which the scores are based.



Metric	Whole archive (#Entries)	Similar resolution (#Entries, resolution range(Å))
R_{free}	100719	1762 (1.76-1.76)
Clashscore	112137	1889 (1.76-1.76)
Ramachandran outliers	110173	1868 (1.76-1.76)
Sidechain outliers	110143	1868 (1.76-1.76)
RSRZ outliers	101464	1770 (1.76-1.76)

The table below summarises the geometric issues observed across the polymeric chains and their fit to the electron density. The red, orange, yellow and green segments on the lower bar indicate the fraction of residues that contain outliers for ≥ 3 , 2, 1 and 0 types of geometric quality criteria. A grey segment represents the fraction of residues that are not modelled. The numeric value for each fraction is indicated below the corresponding segment, with a dot representing fractions $\leq 5\%$. The upper red bar (where present) indicates the fraction of residues that have poor fit to the electron density. The numeric value is given above the bar.

Mol	Chain	Length	Quality of chain
1	A	230	<div> <div>3%</div> <div>87% 5% 8%</div> </div>
1	B	230	<div> <div>7%</div> <div>83% 8% 8%</div> </div>
1	C	230	<div> <div>8%</div> <div>82% 9% 8%</div> </div>
1	D	230	<div> <div>10%</div> <div>86% 7% 7%</div> </div>
1	E	230	<div> <div>9%</div> <div>81% 10% 9%</div> </div>

The following table lists non-polymeric compounds, carbohydrate monomers and non-standard residues in protein, DNA, RNA chains that are outliers for geometric or electron-density-fit criteria:

Mol	Type	Chain	Res	Chirality	Geometry	Clashes	Electron density
2	COC	A	401	-	-	-	X
4	PG4	B	403	-	-	-	X

2 Entry composition

There are 7 unique types of molecules in this entry. The entry contains 9900 atoms, of which 0 are hydrogens and 0 are deuteriums.

In the tables below, the ZeroOcc column contains the number of atoms modelled with zero occupancy, the AltConf column contains the number of residues with at least one atom in alternate conformation and the Trace column contains the number of residues modelled with at most 2 atoms.

- Molecule 1 is a protein called Soluble acetylcholine receptor.

Mol	Chain	Residues	Atoms					ZeroOcc	AltConf	Trace
1	A	211	Total	C	N	O	S	0	6	0
			1721	1085	285	343	8			
1	B	211	Total	C	N	O	S	0	2	0
			1695	1072	276	339	8			
1	C	211	Total	C	N	O	S	0	7	0
			1728	1091	286	341	10			
1	D	214	Total	C	N	O	S	0	5	0
			1742	1100	285	348	9			
1	E	209	Total	C	N	O	S	0	9	0
			1718	1086	282	341	9			

There are 55 discrepancies between the modelled and reference sequences:

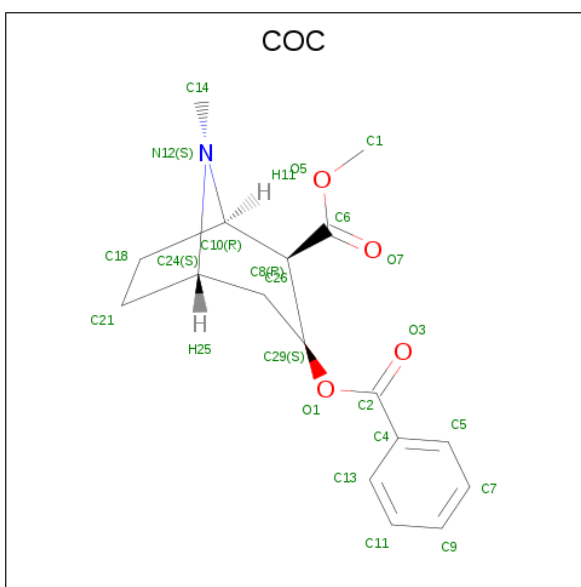
Chain	Residue	Modelled	Actual	Comment	Reference
A	-8	ASP	-	CLONING ARTIFACT	UNP Q8WSF8
A	-7	TYR	-	CLONING ARTIFACT	UNP Q8WSF8
A	-6	LYS	-	CLONING ARTIFACT	UNP Q8WSF8
A	-5	ASP	-	CLONING ARTIFACT	UNP Q8WSF8
A	-4	ASP	-	CLONING ARTIFACT	UNP Q8WSF8
A	-3	ASP	-	CLONING ARTIFACT	UNP Q8WSF8
A	-2	ASP	-	CLONING ARTIFACT	UNP Q8WSF8
A	-1	LYS	-	CLONING ARTIFACT	UNP Q8WSF8
A	0	LEU	-	CLONING ARTIFACT	UNP Q8WSF8
A	220	SER	-	CLONING ARTIFACT	UNP Q8WSF8
A	221	ARG	-	CLONING ARTIFACT	UNP Q8WSF8
B	-8	ASP	-	CLONING ARTIFACT	UNP Q8WSF8
B	-7	TYR	-	CLONING ARTIFACT	UNP Q8WSF8
B	-6	LYS	-	CLONING ARTIFACT	UNP Q8WSF8
B	-5	ASP	-	CLONING ARTIFACT	UNP Q8WSF8
B	-4	ASP	-	CLONING ARTIFACT	UNP Q8WSF8
B	-3	ASP	-	CLONING ARTIFACT	UNP Q8WSF8
B	-2	ASP	-	CLONING ARTIFACT	UNP Q8WSF8
B	-1	LYS	-	CLONING ARTIFACT	UNP Q8WSF8

Continued on next page...

Continued from previous page...

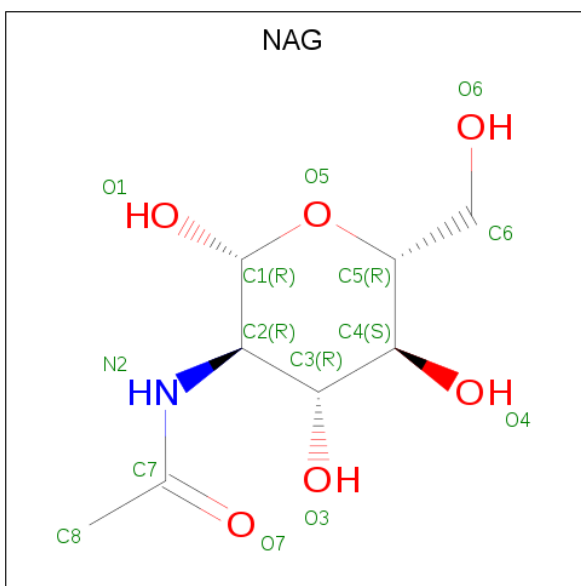
Chain	Residue	Modelled	Actual	Comment	Reference
B	0	LEU	-	CLONING ARTIFACT	UNP Q8WSF8
B	220	SER	-	CLONING ARTIFACT	UNP Q8WSF8
B	221	ARG	-	CLONING ARTIFACT	UNP Q8WSF8
C	-8	ASP	-	CLONING ARTIFACT	UNP Q8WSF8
C	-7	TYR	-	CLONING ARTIFACT	UNP Q8WSF8
C	-6	LYS	-	CLONING ARTIFACT	UNP Q8WSF8
C	-5	ASP	-	CLONING ARTIFACT	UNP Q8WSF8
C	-4	ASP	-	CLONING ARTIFACT	UNP Q8WSF8
C	-3	ASP	-	CLONING ARTIFACT	UNP Q8WSF8
C	-2	ASP	-	CLONING ARTIFACT	UNP Q8WSF8
C	-1	LYS	-	CLONING ARTIFACT	UNP Q8WSF8
C	0	LEU	-	CLONING ARTIFACT	UNP Q8WSF8
C	220	SER	-	CLONING ARTIFACT	UNP Q8WSF8
C	221	ARG	-	CLONING ARTIFACT	UNP Q8WSF8
D	-8	ASP	-	CLONING ARTIFACT	UNP Q8WSF8
D	-7	TYR	-	CLONING ARTIFACT	UNP Q8WSF8
D	-6	LYS	-	CLONING ARTIFACT	UNP Q8WSF8
D	-5	ASP	-	CLONING ARTIFACT	UNP Q8WSF8
D	-4	ASP	-	CLONING ARTIFACT	UNP Q8WSF8
D	-3	ASP	-	CLONING ARTIFACT	UNP Q8WSF8
D	-2	ASP	-	CLONING ARTIFACT	UNP Q8WSF8
D	-1	LYS	-	CLONING ARTIFACT	UNP Q8WSF8
D	0	LEU	-	CLONING ARTIFACT	UNP Q8WSF8
D	220	SER	-	CLONING ARTIFACT	UNP Q8WSF8
D	221	ARG	-	CLONING ARTIFACT	UNP Q8WSF8
E	-8	ASP	-	CLONING ARTIFACT	UNP Q8WSF8
E	-7	TYR	-	CLONING ARTIFACT	UNP Q8WSF8
E	-6	LYS	-	CLONING ARTIFACT	UNP Q8WSF8
E	-5	ASP	-	CLONING ARTIFACT	UNP Q8WSF8
E	-4	ASP	-	CLONING ARTIFACT	UNP Q8WSF8
E	-3	ASP	-	CLONING ARTIFACT	UNP Q8WSF8
E	-2	ASP	-	CLONING ARTIFACT	UNP Q8WSF8
E	-1	LYS	-	CLONING ARTIFACT	UNP Q8WSF8
E	0	LEU	-	CLONING ARTIFACT	UNP Q8WSF8
E	220	SER	-	CLONING ARTIFACT	UNP Q8WSF8
E	221	ARG	-	CLONING ARTIFACT	UNP Q8WSF8

- Molecule 2 is COCAINE (three-letter code: COC) (formula: C₁₇H₂₁NO₄).



Mol	Chain	Residues	Atoms				ZeroOcc	AltConf
2	A	1	Total 22	C 17	N 1	O 4	0	0
2	D	1	Total 22	C 17	N 1	O 4	0	0

- Molecule 3 is N-ACETYL-D-GLUCOSAMINE (three-letter code: NAG) (formula: $C_8H_{15}NO_6$).



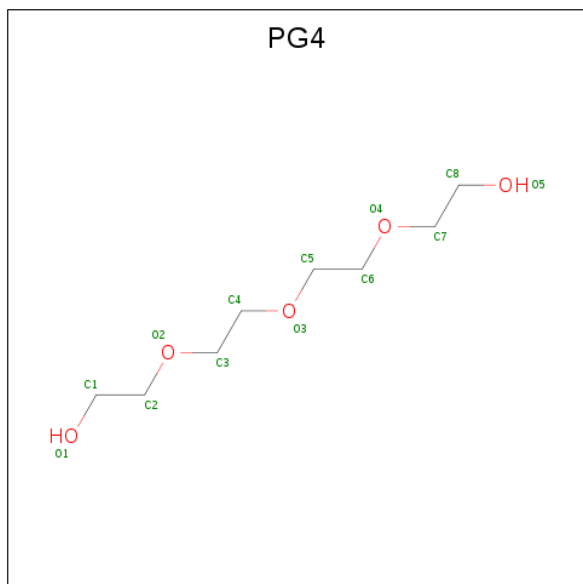
Mol	Chain	Residues	Atoms				ZeroOcc	AltConf
3	B	1	Total 14	C 8	N 1	O 5	0	0
3	C	1	Total 14	C 8	N 1	O 5	0	0

Continued on next page...

Continued from previous page...

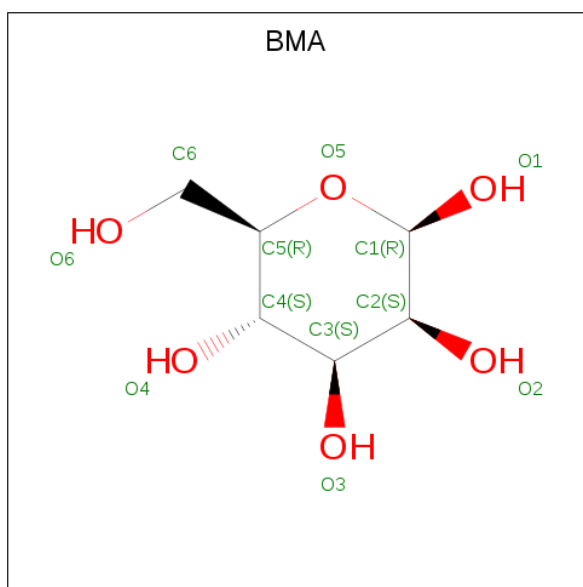
Mol	Chain	Residues	Atoms				ZeroOcc	AltConf
3	C	1	Total	C	N	O	0	0
			14	8	1	5		

- Molecule 4 is TETRAETHYLENE GLYCOL (three-letter code: PG4) (formula: $C_8H_{18}O_5$).



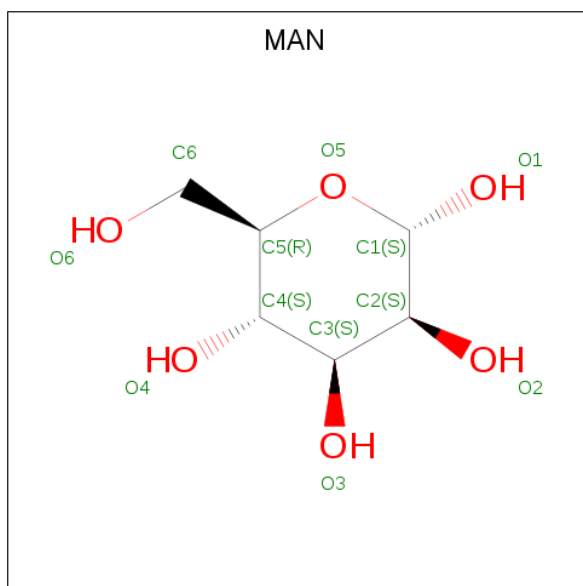
Mol	Chain	Residues	Atoms			ZeroOcc	AltConf
4	B	1	Total	C	O	0	0
			13	8	5		
4	C	1	Total	C	O	0	0
			10	6	4		
4	E	1	Total	C	O	0	0
			13	8	5		

- Molecule 5 is BETA-D-MANNOSE (three-letter code: BMA) (formula: $C_6H_{12}O_6$).



Mol	Chain	Residues	Atoms			ZeroOcc	AltConf
5	C	1	Total	C	O	0	0
			11	6	5		

- Molecule 6 is ALPHA-D-MANNOSE (three-letter code: MAN) (formula: C₆H₁₂O₆).



Mol	Chain	Residues	Atoms			ZeroOcc	AltConf
6	C	1	Total	C	O	0	0
			11	6	5		
6	C	1	Total	C	O	0	0
			11	6	5		

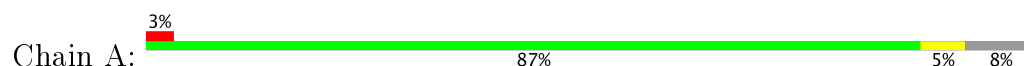
- Molecule 7 is water.

Mol	Chain	Residues	Atoms		ZeroOcc	AltConf
7	A	251	Total 251	O 251	0	6
7	B	229	Total 229	O 229	0	2
7	C	230	Total 230	O 230	0	8
7	D	223	Total 223	O 223	0	2
7	E	208	Total 208	O 208	0	6

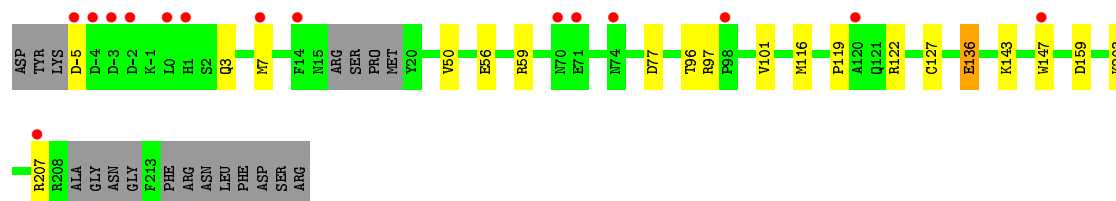
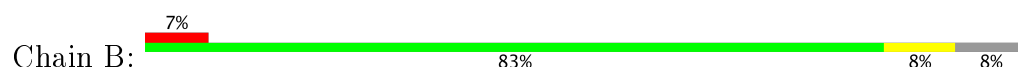
3 Residue-property plots [i](#)

These plots are drawn for all protein, RNA and DNA chains in the entry. The first graphic for a chain summarises the proportions of the various outlier classes displayed in the second graphic. The second graphic shows the sequence view annotated by issues in geometry and electron density. Residues are color-coded according to the number of geometric quality criteria for which they contain at least one outlier: green = 0, yellow = 1, orange = 2 and red = 3 or more. A red dot above a residue indicates a poor fit to the electron density ($RSRZ > 2$). Stretches of 2 or more consecutive residues without any outlier are shown as a green connector. Residues present in the sample, but not in the model, are shown in grey.

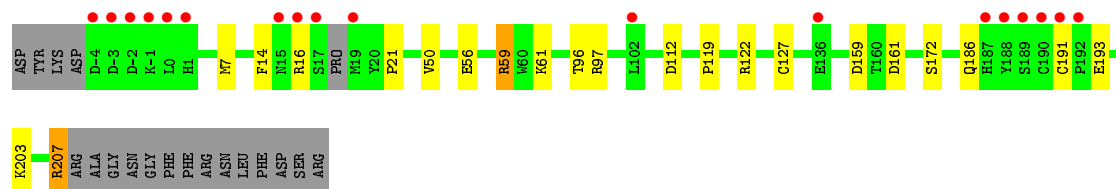
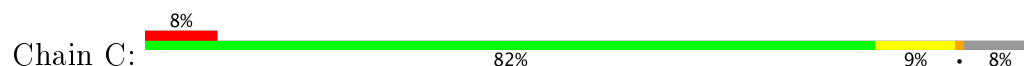
- Molecule 1: Soluble acetylcholine receptor



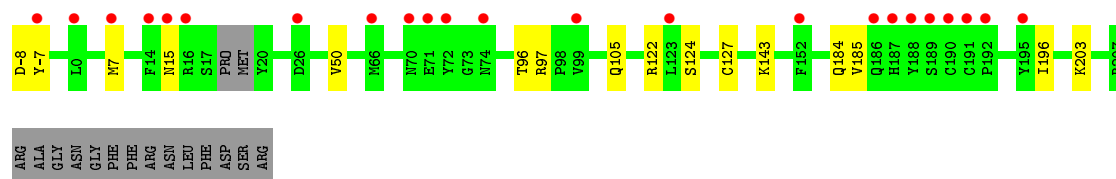
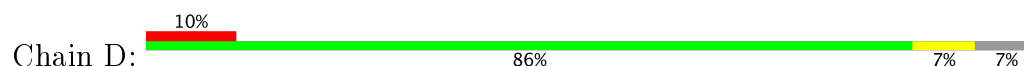
- Molecule 1: Soluble acetylcholine receptor



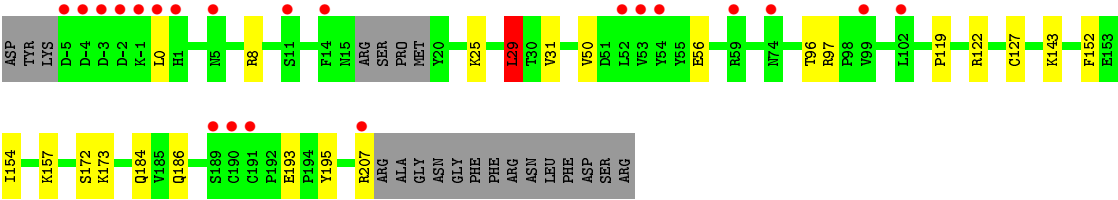
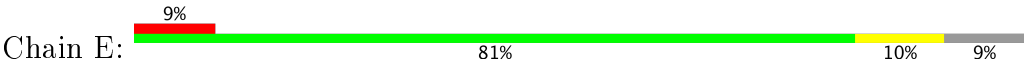
- Molecule 1: Soluble acetylcholine receptor



- Molecule 1: Soluble acetylcholine receptor



- Molecule 1: Soluble acetylcholine receptor



4 Data and refinement statistics

Property	Value	Source
Space group	P 21 21 21	Depositor
Cell constants a, b, c, α , β , γ	86.82Å 115.59Å 130.88Å 90.00° 90.00° 90.00°	Depositor
Resolution (Å)	50.00 – 1.76 47.62 – 1.76	Depositor EDS
% Data completeness (in resolution range)	99.5 (50.00-1.76) 99.5 (47.62-1.76)	Depositor EDS
R_{merge}	0.06	Depositor
R_{sym}	0.05	Depositor
$\langle I/\sigma(I) \rangle$ ¹	2.37 (at 1.76Å)	Xtriage
Refinement program	REFMAC 5.2.0019	Depositor
R, R_{free}	0.180 , 0.210 0.191 , 0.221	Depositor DCC
R_{free} test set	1314 reflections (1.02%)	DCC
Wilson B-factor (Å ²)	25.8	Xtriage
Anisotropy	0.057	Xtriage
Bulk solvent k_{sol} (e/Å ³), B_{sol} (Å ²)	0.32 , 36.8	EDS
L-test for twinning ²	$\langle L \rangle = 0.51$, $\langle L^2 \rangle = 0.34$	Xtriage
Estimated twinning fraction	No twinning to report.	Xtriage
F_o, F_c correlation	0.95	EDS
Total number of atoms	9900	wwPDB-VP
Average B, all atoms (Å ²)	29.0	wwPDB-VP

Xtriage's analysis on translational NCS is as follows: *The largest off-origin peak in the Patterson function is 3.27% of the height of the origin peak. No significant pseudotranslation is detected.*

¹Intensities estimated from amplitudes.

²Theoretical values of $\langle |L| \rangle$, $\langle L^2 \rangle$ for acentric reflections are 0.5, 0.333 respectively for untwinned datasets, and 0.375, 0.2 for perfectly twinned datasets.

5 Model quality

5.1 Standard geometry

Bond lengths and bond angles in the following residue types are not validated in this section: PG4, COC, BMA, NAG, MAN

The Z score for a bond length (or angle) is the number of standard deviations the observed value is removed from the expected value. A bond length (or angle) with $|Z| > 5$ is considered an outlier worth inspection. RMSZ is the root-mean-square of all Z scores of the bond lengths (or angles).

Mol	Chain	Bond lengths		Bond angles	
		RMSZ	$\# Z > 5$	RMSZ	$\# Z > 5$
1	A	0.53	0/1777	0.61	0/2418
1	B	0.54	0/1740	0.63	0/2369
1	C	0.49	0/1787	0.64	0/2428
1	D	0.61	1/1796 (0.1%)	0.66	0/2443
1	E	0.65	3/1787 (0.2%)	0.76	3/2430 (0.1%)
All	All	0.57	4/8887 (0.0%)	0.66	3/12088 (0.0%)

All (4) bond length outliers are listed below:

Mol	Chain	Res	Type	Atoms	Z	Observed(Å)	Ideal(Å)
1	E	8	ARG	NE-CZ	11.91	1.48	1.33
1	E	8	ARG	CG-CD	8.34	1.72	1.51
1	D	-8	ASP	N-CA	6.38	1.59	1.46
1	E	8	ARG	CZ-NH2	5.43	1.40	1.33

All (3) bond angle outliers are listed below:

Mol	Chain	Res	Type	Atoms	Z	Observed(°)	Ideal(°)
1	E	8	ARG	NE-CZ-NH1	-16.74	111.93	120.30
1	E	8	ARG	NE-CZ-NH2	10.15	125.37	120.30
1	E	29	LEU	CA-CB-CG	5.31	127.52	115.30

There are no chirality outliers.

There are no planarity outliers.

5.2 Too-close contacts

In the following table, the Non-H and H(model) columns list the number of non-hydrogen atoms and hydrogen atoms in the chain respectively. The H(added) column lists the number of hydrogen

atoms added and optimized by MolProbity. The Clashes column lists the number of clashes within the asymmetric unit, whereas Symm-Clashes lists symmetry related clashes.

Mol	Chain	Non-H	H(model)	H(added)	Clashes	Symm-Clashes
1	A	1721	0	1659	9	0
1	B	1695	0	1615	19	0
1	C	1728	0	1675	21	0
1	D	1742	0	1675	15	1
1	E	1718	0	1661	16	1
2	A	22	0	21	1	0
2	D	22	0	21	0	0
3	B	14	0	13	0	0
3	C	28	0	24	0	0
4	B	13	0	18	3	0
4	C	10	0	13	0	0
4	E	13	0	18	2	0
5	C	11	0	8	0	0
6	C	22	0	20	0	0
7	A	251	0	0	3	0
7	B	229	0	0	8	0
7	C	230	0	0	7	0
7	D	223	0	0	2	0
7	E	208	0	0	5	0
All	All	9900	0	8441	77	1

The all-atom clashscore is defined as the number of clashes found per 1000 atoms (including hydrogen atoms). The all-atom clashscore for this structure is 4.

All (77) close contacts within the same asymmetric unit are listed below, sorted by their clash magnitude.

Atom-1	Atom-2	Interatomic distance (Å)	Clash overlap (Å)
1:C:97[B]:ARG:HG3	7:C:633[B]:HOH:O	1.45	1.12
1:A:97[B]:ARG:NE	7:A:650[B]:HOH:O	1.65	1.00
4:B:403:PG4:H62	7:B:611:HOH:O	1.78	0.83
1:A:97[B]:ARG:CZ	7:A:650[B]:HOH:O	2.16	0.79
1:C:207[A]:ARG:HD3	7:C:635[A]:HOH:O	1.82	0.78
1:C:207[A]:ARG:HH11	1:C:207[A]:ARG:HG2	1.49	0.78
1:C:207[A]:ARG:HH11	1:C:207[A]:ARG:CG	1.97	0.78
1:A:97[B]:ARG:NH2	7:A:650[B]:HOH:O	2.17	0.75
1:C:59[B]:ARG:NH1	1:C:159:ASP:OD2	2.17	0.75
1:D:105:GLN:OE1	7:D:580:HOH:O	2.04	0.74
1:B:101:VAL:HG13	7:B:632:HOH:O	1.87	0.73
1:B:59:ARG:NH1	1:B:159:ASP:OD2	2.21	0.73

Continued on next page...

Continued from previous page...

Atom-1	Atom-2	Interatomic distance (Å)	Clash overlap (Å)
1:A:59[A]:ARG:NH1	1:A:159:ASP:OD2	2.23	0.71
1:C:191:CYS:HB3	1:C:193:GLU:OE2	1.93	0.68
1:D:105:GLN:OE1	7:D:594:HOH:O	2.12	0.67
4:E:403:PG4:H32	7:E:587:HOH:O	1.95	0.67
1:B:147:TRP:O	4:B:403:PG4:H82	1.95	0.66
1:D:185:VAL:HG13	1:D:196:ILE:CD1	2.27	0.65
1:A:11:SER:HA	1:A:15:ASN:HD22	1.62	0.63
1:E:29:LEU:HD21	1:E:31:VAL:HG23	1.80	0.63
1:D:97[A]:ARG:HH21	1:D:124:SER:CB	2.13	0.62
1:C:203[B]:LYS:HG3	7:C:565:HOH:O	1.99	0.61
1:C:21:PRO:HB3	1:D:7:MET:CE	2.31	0.60
1:D:143:LYS:HZ2	1:D:184:GLN:HE22	1.50	0.60
4:E:403:PG4:H21	7:E:587:HOH:O	2.01	0.59
1:D:143:LYS:NZ	1:D:184:GLN:HE22	2.00	0.59
1:E:29:LEU:HD21	1:E:31:VAL:CG2	2.34	0.57
1:B:203[B]:LYS:HG3	7:B:623:HOH:O	2.05	0.57
1:D:7:MET:CE	1:D:7:MET:HA	2.34	0.57
1:E:143[A]:LYS:HE2	1:E:184:GLN:HE22	1.70	0.56
1:C:97[B]:ARG:CG	7:C:633[B]:HOH:O	2.24	0.56
1:C:161[A]:ASP:HB3	7:C:624:HOH:O	2.05	0.56
1:B:59:ARG:HG2	1:B:116:MET:HG3	1.88	0.56
1:B:96:THR:O	1:C:122:ARG:HD2	2.06	0.56
1:C:7:MET:HG2	7:C:505:HOH:O	2.06	0.55
1:C:207[A]:ARG:CG	1:C:207[A]:ARG:NH1	2.66	0.55
1:C:97[A]:ARG:NH1	7:C:442:HOH:O	2.39	0.54
1:B:136:GLU:CD	1:B:136:GLU:H	2.12	0.53
1:D:7:MET:HA	1:D:7:MET:HE2	1.90	0.52
1:B:59:ARG:CG	1:B:116:MET:HG3	2.40	0.52
1:C:96:THR:O	1:D:122:ARG:HD2	2.10	0.52
1:E:29:LEU:CD2	1:E:31:VAL:HG23	2.39	0.52
1:D:50:VAL:HG21	1:D:127:CYS:SG	2.50	0.51
1:A:96:THR:O	1:B:122:ARG:HD2	2.11	0.51
1:B:59:ARG:HD3	1:B:116:MET:HE2	1.93	0.50
1:A:122:ARG:HD2	1:E:96:THR:O	2.12	0.50
1:B:3:GLN:O	1:B:7:MET:HG3	2.11	0.50
1:E:157:LYS:NZ	7:E:562:HOH:O	2.43	0.50
1:C:50:VAL:HG21	1:C:127:CYS:SG	2.52	0.49
1:D:96:THR:O	1:E:122:ARG:HD2	2.13	0.49
1:B:59:ARG:HD3	1:B:116:MET:CE	2.43	0.48
1:B:97[B]:ARG:HD3	7:B:476:HOH:O	2.13	0.48
1:B:143:LYS:NZ	7:B:532:HOH:O	2.45	0.48

Continued on next page...

Continued from previous page...

Atom-1	Atom-2	Interatomic distance (Å)	Clash overlap (Å)
1:E:25:LYS:HE2	1:E:152:PHE:CD2	2.48	0.48
1:B:50:VAL:HG21	1:B:127:CYS:SG	2.54	0.47
1:A:195:TYR:CG	2:A:401:COC:H15	2.50	0.47
1:E:25:LYS:HG3	1:E:152:PHE:HB3	1.96	0.46
1:C:61:LYS:HE3	1:C:112:ASP:O	2.15	0.46
1:E:50:VAL:HG21	1:E:127:CYS:SG	2.56	0.46
1:E:29:LEU:HD22	1:E:154:ILE:HG12	1.97	0.45
1:C:21:PRO:HB3	1:D:7:MET:HE1	1.97	0.45
1:E:97[A]:ARG:HD2	7:E:609[A]:HOH:O	2.17	0.45
1:B:56:GLU:O	1:B:119:PRO:HD2	2.16	0.44
4:B:403:PG4:H12	7:B:611:HOH:O	2.18	0.44
1:E:172:SER:O	1:E:207[A]:ARG:NH2	2.50	0.44
1:E:97[A]:ARG:HD3	7:E:476:HOH:O	2.17	0.44
1:B:3:GLN:HB3	1:B:7:MET:HE3	1.99	0.44
1:A:50:VAL:HG21	1:A:127:CYS:SG	2.59	0.43
1:D:185:VAL:HG13	1:D:196:ILE:HD13	2.01	0.42
1:C:14:PHE:C	1:C:16:ARG:H	2.23	0.42
1:B:7:MET:HG2	7:B:597:HOH:O	2.19	0.41
1:E:193:GLU:HG2	1:E:195:TYR:CE2	2.55	0.41
1:E:56:GLU:O	1:E:119:PRO:HD2	2.21	0.41
1:B:207:ARG:HD3	7:B:523:HOH:O	2.20	0.40
1:C:172:SER:N	1:C:207[B]:ARG:HH11	2.18	0.40
1:C:56:GLU:O	1:C:119:PRO:HD2	2.22	0.40

All (1) symmetry-related close contacts are listed below. The label for Atom-2 includes the symmetry operator and encoded unit-cell translations to be applied.

Atom-1	Atom-2	Interatomic distance (Å)	Clash overlap (Å)
1:D:-7:TYR:OH	1:E:173:LYS:O[2_554]	2.12	0.08

5.3 Torsion angles

5.3.1 Protein backbone

In the following table, the Percentiles column shows the percent Ramachandran outliers of the chain as a percentile score with respect to all X-ray entries followed by that with respect to entries of similar resolution.

The Analysed column shows the number of residues for which the backbone conformation was analysed, and the total number of residues.

Mol	Chain	Analysed	Favoured	Allowed	Outliers	Percentiles	
1	A	212/230 (92%)	210 (99%)	2 (1%)	0	100	100
1	B	208/230 (90%)	206 (99%)	2 (1%)	0	100	100
1	C	213/230 (93%)	208 (98%)	5 (2%)	0	100	100
1	D	214/230 (93%)	212 (99%)	2 (1%)	0	100	100
1	E	213/230 (93%)	210 (99%)	3 (1%)	0	100	100
All	All	1060/1150 (92%)	1046 (99%)	14 (1%)	0	100	100

There are no Ramachandran outliers to report.

5.3.2 Protein sidechains ⓘ

In the following table, the Percentiles column shows the percent sidechain outliers of the chain as a percentile score with respect to all X-ray entries followed by that with respect to entries of similar resolution.

The Analysed column shows the number of residues for which the sidechain conformation was analysed, and the total number of residues.

Mol	Chain	Analysed	Rotameric	Outliers	Percentiles	
1	A	198/208 (95%)	196 (99%)	2 (1%)	80	67
1	B	193/208 (93%)	190 (98%)	3 (2%)	68	50
1	C	199/208 (96%)	194 (98%)	5 (2%)	53	28
1	D	200/208 (96%)	199 (100%)	1 (0%)	91	86
1	E	199/208 (96%)	196 (98%)	3 (2%)	70	53
All	All	989/1040 (95%)	975 (99%)	14 (1%)	73	56

All (14) residues with a non-rotameric sidechain are listed below:

Mol	Chain	Res	Type
1	A	-3	ASP
1	A	157	LYS
1	B	-5	ASP
1	B	77	ASP
1	B	136	GLU
1	C	59[A]	ARG
1	C	59[B]	ARG
1	C	186	GLN
1	C	207[A]	ARG
1	C	207[B]	ARG

Continued on next page...

Continued from previous page...

Mol	Chain	Res	Type
1	D	15	ASN
1	E	0	LEU
1	E	29	LEU
1	E	186	GLN

Some sidechains can be flipped to improve hydrogen bonding and reduce clashes. All (14) such sidechains are listed below:

Mol	Chain	Res	Type
1	A	15	ASN
1	A	63	ASN
1	B	3	GLN
1	B	184	GLN
1	C	184	GLN
1	C	186	GLN
1	D	3	GLN
1	D	15	ASN
1	D	74	ASN
1	D	184	GLN
1	E	3	GLN
1	E	15	ASN
1	E	184	GLN
1	E	186	GLN

5.3.3 RNA [i](#)

There are no RNA molecules in this entry.

5.4 Non-standard residues in protein, DNA, RNA chains [i](#)

There are no non-standard protein/DNA/RNA residues in this entry.

5.5 Carbohydrates [i](#)

There are no carbohydrates in this entry.

5.6 Ligand geometry [i](#)

11 ligands are modelled in this entry.

In the following table, the Counts columns list the number of bonds (or angles) for which Mogul statistics could be retrieved, the number of bonds (or angles) that are observed in the model and the number of bonds (or angles) that are defined in the Chemical Component Dictionary. The Link column lists molecule types, if any, to which the group is linked. The Z score for a bond length (or angle) is the number of standard deviations the observed value is removed from the expected value. A bond length (or angle) with $|Z| > 2$ is considered an outlier worth inspection. RMSZ is the root-mean-square of all Z scores of the bond lengths (or angles).

Mol	Type	Chain	Res	Link	Bond lengths			Bond angles		
					Counts	RMSZ	# $ Z > 2$	Counts	RMSZ	# $ Z > 2$
2	COC	A	401	-	24,24,24	1.59	4 (16%)	29,34,34	3.15	8 (27%)
3	NAG	B	402	1	14,14,15	3.24	4 (28%)	15,19,21	3.16	5 (33%)
4	PG4	B	403	-	12,12,12	1.54	3 (25%)	11,11,11	0.64	0
3	NAG	C	402	1,3	14,14,15	0.44	0	15,19,21	1.29	1 (6%)
3	NAG	C	403	3,5	14,14,15	0.33	0	15,19,21	1.01	1 (6%)
5	BMA	C	404	3,6	11,11,12	0.41	0	13,15,17	0.67	0
6	MAN	C	405	5	11,11,12	0.47	0	13,15,17	1.26	1 (7%)
6	MAN	C	406	5	11,11,12	0.53	0	13,15,17	0.99	2 (15%)
4	PG4	C	407	-	9,9,12	1.18	1 (11%)	8,8,11	0.82	0
2	COC	D	401	-	24,24,24	1.72	3 (12%)	29,34,34	2.75	12 (41%)
4	PG4	E	403	-	12,12,12	0.53	0	11,11,11	0.27	0

In the following table, the Chirals column lists the number of chiral outliers, the number of chiral centers analysed, the number of these observed in the model and the number defined in the Chemical Component Dictionary. Similar counts are reported in the Torsion and Rings columns. '-' means no outliers of that kind were identified.

Mol	Type	Chain	Res	Link	Chirals	Torsions	Rings
2	COC	A	401	-	-	0/14/39/39	0/1/3/3
3	NAG	B	402	1	-	0/6/23/26	0/1/1/1
4	PG4	B	403	-	-	0/10/10/10	0/0/0/0
3	NAG	C	402	1,3	-	0/6/23/26	0/1/1/1
3	NAG	C	403	3,5	-	0/6/23/26	0/1/1/1
5	BMA	C	404	3,6	-	0/2/19/22	0/1/1/1
6	MAN	C	405	5	-	0/2/19/22	0/1/1/1
6	MAN	C	406	5	-	0/2/19/22	0/1/1/1
4	PG4	C	407	-	-	0/7/7/10	0/0/0/0
2	COC	D	401	-	-	0/14/39/39	0/1/3/3
4	PG4	E	403	-	-	0/10/10/10	0/0/0/0

All (15) bond length outliers are listed below:

Mol	Chain	Res	Type	Atoms	Z	Observed(Å)	Ideal(Å)
2	A	401	COC	O1-C29	-3.02	1.40	1.46
2	D	401	COC	O1-C29	-2.26	1.42	1.46
2	A	401	COC	C24-N12	-2.11	1.45	1.48
4	B	403	PG4	O2-C3	2.08	1.51	1.42
3	B	402	NAG	C8-C7	2.09	1.55	1.50
4	B	403	PG4	C4-C3	2.11	1.59	1.49
4	C	407	PG4	O3-C4	2.25	1.51	1.42
4	B	403	PG4	O3-C5	3.35	1.56	1.42
2	A	401	COC	O5-C6	4.21	1.43	1.33
3	B	402	NAG	O6-C6	4.32	1.60	1.42
2	A	401	COC	O1-C2	4.45	1.44	1.34
2	D	401	COC	O1-C2	5.13	1.45	1.34
2	D	401	COC	O5-C6	5.19	1.46	1.33
3	B	402	NAG	O7-C7	6.79	1.39	1.23
3	B	402	NAG	C7-N2	8.37	1.65	1.34

All (30) bond angle outliers are listed below:

Mol	Chain	Res	Type	Atoms	Z	Observed(°)	Ideal(°)
2	A	401	COC	C18-C10-N12	-12.26	92.26	105.12
3	B	402	NAG	C2-N2-C7	-9.23	109.47	122.94
2	D	401	COC	C18-C10-N12	-7.96	96.77	105.12
2	A	401	COC	C21-C24-N12	-6.46	93.77	104.61
3	B	402	NAG	C8-C7-N2	-6.02	105.23	116.11
2	D	401	COC	C21-C24-N12	-4.13	97.67	104.61
3	B	402	NAG	C1-C2-N2	-3.54	104.43	110.49
3	C	403	NAG	C1-C2-N2	-3.20	105.02	110.49
2	A	401	COC	O5-C6-O7	-2.84	118.11	123.82
2	D	401	COC	O5-C6-O7	-2.44	118.91	123.82
2	D	401	COC	C29-O1-C2	-2.40	113.14	117.40
3	B	402	NAG	O6-C6-C5	-2.32	103.53	111.34
2	D	401	COC	C26-C24-N12	-2.15	104.69	107.64
2	D	401	COC	O1-C2-O3	-2.12	119.89	123.51
3	B	402	NAG	C1-O5-C5	2.05	115.00	112.17
6	C	406	MAN	C1-C2-C3	2.32	112.59	109.65
2	A	401	COC	C21-C18-C10	2.36	107.59	104.01
6	C	406	MAN	C1-O5-C5	2.39	115.46	112.17
2	A	401	COC	O1-C2-C4	2.40	116.00	111.92
2	D	401	COC	C21-C18-C10	2.52	107.83	104.01
2	D	401	COC	C1-O5-C6	2.85	122.66	115.97
2	D	401	COC	O1-C2-C4	3.42	117.72	111.92
2	A	401	COC	C14-N12-C10	3.79	121.97	113.36
3	C	402	NAG	C2-N2-C7	3.87	128.58	122.94

Continued on next page...

Continued from previous page...

Mol	Chain	Res	Type	Atoms	Z	Observed(°)	Ideal(°)
6	C	405	MAN	C1-O5-C5	3.94	117.60	112.17
2	D	401	COC	C14-N12-C10	4.06	122.60	113.36
2	A	401	COC	C14-N12-C24	4.32	121.33	113.15
2	A	401	COC	O5-C6-C8	4.69	117.95	111.03
2	D	401	COC	C14-N12-C24	5.24	123.06	113.15
2	D	401	COC	O5-C6-C8	5.66	119.38	111.03

There are no chirality outliers.

There are no torsion outliers.

There are no ring outliers.

3 monomers are involved in 6 short contacts:

Mol	Chain	Res	Type	Clashes	Symm-Clashes
2	A	401	COC	1	0
4	B	403	PG4	3	0
4	E	403	PG4	2	0

5.7 Other polymers [i](#)

There are no such residues in this entry.

5.8 Polymer linkage issues [i](#)

There are no chain breaks in this entry.

6 Fit of model and data

6.1 Protein, DNA and RNA chains

In the following table, the column labelled ‘#RSRZ> 2’ contains the number (and percentage) of RSRZ outliers, followed by percent RSRZ outliers for the chain as percentile scores relative to all X-ray entries and entries of similar resolution. The OWAB column contains the minimum, median, 95th percentile and maximum values of the occupancy-weighted average B-factor per residue. The column labelled ‘Q< 0.9’ lists the number of (and percentage) of residues with an average occupancy less than 0.9.

Mol	Chain	Analysed	<RSRZ>	#RSRZ>2	OWAB(Å ²)	Q<0.9
1	A	211/230 (91%)	0.49	8 (3%) 41 48	21, 26, 34, 46	0
1	B	211/230 (91%)	0.81	15 (7%) 17 22	21, 27, 43, 51	0
1	C	211/230 (91%)	0.64	18 (8%) 11 15	22, 28, 47, 57	0
1	D	214/230 (93%)	0.79	23 (10%) 7 9	20, 27, 43, 57	0
1	E	209/230 (90%)	0.82	21 (10%) 8 11	22, 26, 54, 60	0
All	All	1056/1150 (91%)	0.71	85 (8%) 13 17	20, 27, 46, 60	0

All (85) RSRZ outliers are listed below:

Mol	Chain	Res	Type	RSRZ
1	D	189	SER	8.7
1	C	190	CYS	7.0
1	C	0	LEU	6.3
1	D	187	HIS	6.0
1	C	-3	ASP	6.0
1	D	16	ARG	6.0
1	C	189	SER	5.8
1	E	190	CYS	5.6
1	B	-4	ASP	5.5
1	B	-3	ASP	5.4
1	D	15	ASN	5.2
1	E	1	HIS	5.1
1	C	188	TYR	5.0
1	E	189	SER	4.7
1	B	-5	ASP	4.7
1	A	16	ARG	4.6
1	D	188	TYR	4.6
1	C	191	CYS	4.5
1	E	191	CYS	4.5
1	E	0	LEU	4.5

Continued on next page...

Continued from previous page...

Mol	Chain	Res	Type	RSRZ
1	B	0	LEU	4.4
1	C	15	ASN	4.3
1	E	-3	ASP	4.1
1	C	-4	ASP	4.0
1	C	187	HIS	4.0
1	E	-5	ASP	3.9
1	D	192	PRO	3.9
1	E	-4	ASP	3.9
1	E	11	SER	3.8
1	D	191	CYS	3.7
1	E	-2	ASP	3.6
1	E	14	PHE	3.5
1	C	16	ARG	3.5
1	A	0	LEU	3.4
1	D	190	CYS	3.3
1	C	-1	LYS	3.3
1	B	207	ARG	3.2
1	E	-1	LYS	3.2
1	B	7	MET	3.1
1	D	152	PHE	3.1
1	D	70	ASN	3.0
1	B	1	HIS	3.0
1	B	14	PHE	2.9
1	E	53	VAL	2.8
1	D	186	GLN	2.8
1	C	19	MET	2.7
1	B	-2	ASP	2.7
1	D	26	ASP	2.7
1	D	14	PHE	2.7
1	B	71	GLU	2.6
1	D	-7	TYR	2.6
1	A	136	GLU	2.6
1	B	70	ASN	2.6
1	D	74	ASN	2.6
1	A	207[A]	ARG	2.6
1	C	1	HIS	2.6
1	D	7	MET	2.6
1	E	74	ASN	2.6
1	D	195	TYR	2.5
1	A	-4	ASP	2.5
1	D	0	LEU	2.5
1	D	71	GLU	2.4

Continued on next page...

Continued from previous page...

Mol	Chain	Res	Type	RSRZ
1	D	99[A]	VAL	2.4
1	E	207[A]	ARG	2.4
1	A	7	MET	2.4
1	C	136	GLU	2.3
1	A	-3	ASP	2.3
1	C	-2	ASP	2.3
1	E	5	ASN	2.3
1	E	59[A]	ARG	2.2
1	E	52	LEU	2.2
1	C	192	PRO	2.1
1	B	120	ALA	2.1
1	D	66	MET	2.1
1	E	99	VAL	2.1
1	B	74	ASN	2.1
1	C	17	SER	2.1
1	D	72	TYR	2.1
1	E	54	TYR	2.1
1	E	102	LEU	2.1
1	A	-5	ASP	2.1
1	C	102	LEU	2.0
1	B	147	TRP	2.0
1	D	123	LEU	2.0
1	B	98	PRO	2.0

6.2 Non-standard residues in protein, DNA, RNA chains [i](#)

There are no non-standard protein/DNA/RNA residues in this entry.

6.3 Carbohydrates [i](#)

There are no carbohydrates in this entry.

6.4 Ligands [i](#)

In the following table, the Atoms column lists the number of modelled atoms in the group and the number defined in the chemical component dictionary. LLDF column lists the quality of electron density of the group with respect to its neighbouring residues in protein, DNA or RNA chains. The B-factors column lists the minimum, median, 95th percentile and maximum values of B factors of atoms in the group. The column labelled 'Q< 0.9' lists the number of atoms with occupancy less than 0.9.

Mol	Type	Chain	Res	Atoms	RSCC	RSR	LLDF	B-factors(\AA^2)	Q<0.9
4	PG4	B	403	13/13	0.65	0.59	27.05	78,85,88,88	0
2	COC	A	401	22/22	0.89	0.27	10.88	20,22,26,27	0
2	COC	D	401	22/22	0.76	0.20	1.50	32,34,37,38	0
4	PG4	C	407	10/13	0.86	0.21	1.48	44,45,47,47	0
4	PG4	E	403	13/13	0.77	0.21	1.12	57,58,60,60	0
3	NAG	C	402	14/15	0.78	0.21	-	44,47,49,49	0
6	MAN	C	406	11/12	0.59	0.33	-	43,44,44,44	0
5	BMA	C	404	11/12	0.83	0.22	-	39,40,41,42	0
3	NAG	C	403	14/15	0.84	0.26	-	44,47,50,50	0
6	MAN	C	405	11/12	0.87	0.25	-	39,40,42,42	0
3	NAG	B	402	14/15	0.69	0.20	-	42,43,44,44	0

6.5 Other polymers [i](#)

There are no such residues in this entry.