



wwPDB X-ray Structure Validation Summary Report ⓘ

Nov 15, 2017 – 05:58 PM EST

PDB ID : 4PHL
Title : TbrPDEB1-inhibitor complex
Authors : Choy, M.S.; Bland, N.; Peti, W.; Page, R.
Deposited on : unknown
Resolution : 1.95 Å(reported)

This is a wwPDB X-ray Structure Validation Summary Report for a publicly released PDB entry.

We welcome your comments at validation@mail.wwpdb.org

A user guide is available at

<http://wwpdb.org/validation/2016/XrayValidationReportHelp>

with specific help available everywhere you see the ⓘ symbol.

The following versions of software and data (see [references ⓘ](#)) were used in the production of this report:

MolProbity : 4.02b-467
Mogul : 1.7.2 (RC1), CSD as538be (2017)
Xtriage (Phenix) : 1.9-1692
EDS : rb-20030345
Percentile statistics : 20161228.v01 (using entries in the PDB archive December 28th 2016)
Refmac : 5.8.0135
CCP4 : 6.5.0
Ideal geometry (proteins) : Engh & Huber (2001)
Ideal geometry (DNA, RNA) : Parkinson et al. (1996)
Validation Pipeline (wwPDB-VP) : rb-20030345

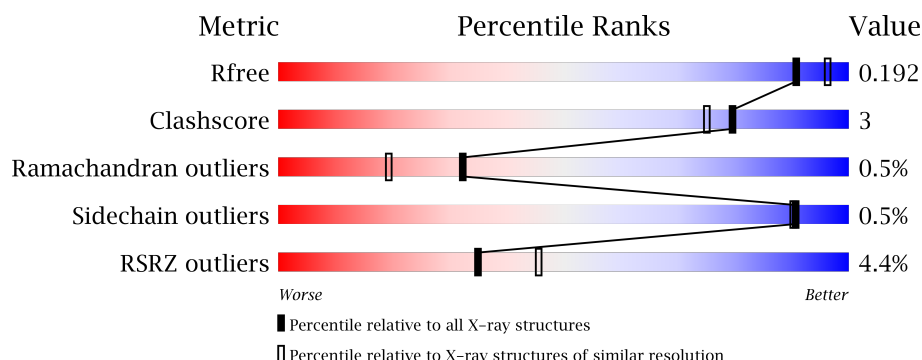
1 Overall quality at a glance

The following experimental techniques were used to determine the structure:

X-RAY DIFFRACTION

The reported resolution of this entry is 1.95 Å.

Percentile scores (ranging between 0-100) for global validation metrics of the entry are shown in the following graphic. The table shows the number of entries on which the scores are based.



Metric	Whole archive (#Entries)	Similar resolution (#Entries, resolution range(Å))
R_{free}	100719	2004 (1.96-1.96)
Clashscore	112137	2136 (1.96-1.96)
Ramachandran outliers	110173	2117 (1.96-1.96)
Sidechain outliers	110143	2117 (1.96-1.96)
RSRZ outliers	101464	2018 (1.96-1.96)

The table below summarises the geometric issues observed across the polymeric chains and their fit to the electron density. The red, orange, yellow and green segments on the lower bar indicate the fraction of residues that contain outliers for ≥ 3 , 2, 1 and 0 types of geometric quality criteria. A grey segment represents the fraction of residues that are not modelled. The numeric value for each fraction is indicated below the corresponding segment, with a dot representing fractions $\leq 5\%$. The upper red bar (where present) indicates the fraction of residues that have poor fit to the electron density. The numeric value is given above the bar.

Mol	Chain	Length	Quality of chain
1	A	347	<div> <div>4%</div> <div>90%</div> <div>5%</div> <div>5%</div> </div>
1	B	347	<div> <div>4%</div> <div>91%</div> <div>.</div> <div>.</div> </div>

The following table lists non-polymeric compounds, carbohydrate monomers and non-standard residues in protein, DNA, RNA chains that are outliers for geometric or electron-density-fit criteria:

Mol	Type	Chain	Res	Chirality	Geometry	Clashes	Electron density
4	PIL	A	1003	-	-	-	X
4	PIL	B	1003	-	-	-	X
6	GOL	A	1005	-	-	X	X
7	EOH	B	1004	-	-	X	-

2 Entry composition

There are 8 unique types of molecules in this entry. The entry contains 5753 atoms, of which 0 are hydrogens and 0 are deuteriums.

In the tables below, the ZeroOcc column contains the number of atoms modelled with zero occupancy, the AltConf column contains the number of residues with at least one atom in alternate conformation and the Trace column contains the number of residues modelled with at most 2 atoms.

- Molecule 1 is a protein called Class 1 phosphodiesterase PDEB1.

Mol	Chain	Residues	Atoms					ZeroOcc	AltConf	Trace
1	A	330	Total	C	N	O	S	0	2	0
			2596	1651	435	492	18			
1	B	332	Total	C	N	O	S	0	6	0
			2633	1676	444	494	19			

There are 10 discrepancies between the modelled and reference sequences:

Chain	Residue	Modelled	Actual	Comment	Reference
A	572	HIS	-	expression tag	UNP Q8WQX9
A	573	MET	-	expression tag	UNP Q8WQX9
A	574	ALA	-	expression tag	UNP Q8WQX9
A	575	SER	-	expression tag	UNP Q8WQX9
A	762	GLY	ASP	conflict	UNP Q8WQX9
B	572	HIS	-	expression tag	UNP Q8WQX9
B	573	MET	-	expression tag	UNP Q8WQX9
B	574	ALA	-	expression tag	UNP Q8WQX9
B	575	SER	-	expression tag	UNP Q8WQX9
B	762	GLY	ASP	conflict	UNP Q8WQX9

- Molecule 2 is ZINC ION (three-letter code: ZN) (formula: Zn).

Mol	Chain	Residues	Atoms		ZeroOcc	AltConf
2	B	1	Total	Zn	0	0
			1	1		
2	A	1	Total	Zn	0	0
			1	1		

- Molecule 3 is MAGNESIUM ION (three-letter code: MG) (formula: Mg).

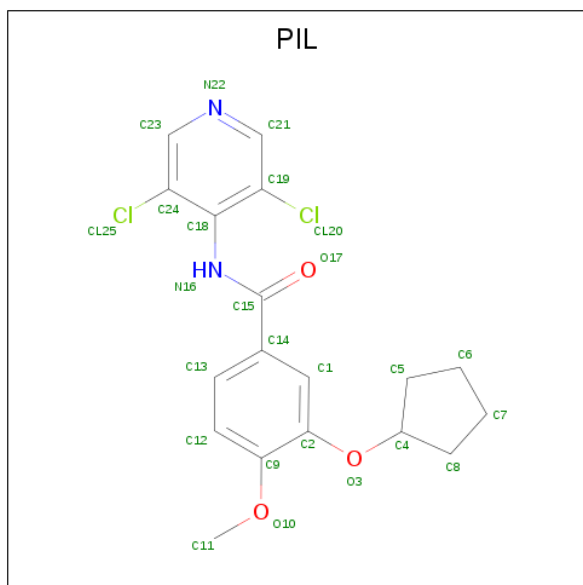
Mol	Chain	Residues	Atoms		ZeroOcc	AltConf
3	B	1	Total	Mg	0	0
			1	1		

Continued on next page...

Continued from previous page...

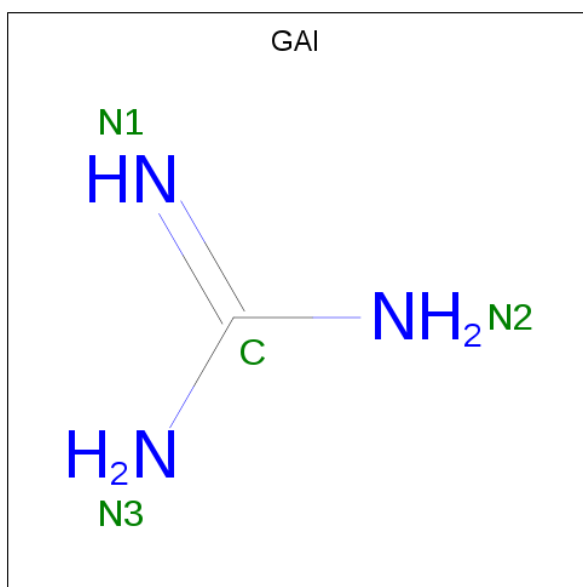
Mol	Chain	Residues	Atoms		ZeroOcc	AltConf
3	A	1	Total	Mg	0	0
			1	1		

- Molecule 4 is 3-(CYCLOPENTYLOXY)-N-(3,5-DICHLOROPYRIDIN-4-YL)-4-METHOXYBENZAMIDE (three-letter code: PIL) (formula: $C_{18}H_{18}Cl_2N_2O_3$).



Mol	Chain	Residues	Atoms					ZeroOcc	AltConf
4	A	1	Total	C	Cl	N	O	0	0
			25	18	2	2	3		
4	B	1	Total	C	Cl	N	O	0	0
			25	18	2	2	3		

- Molecule 5 is GUANIDINE (three-letter code: GAI) (formula: CH_5N_3).



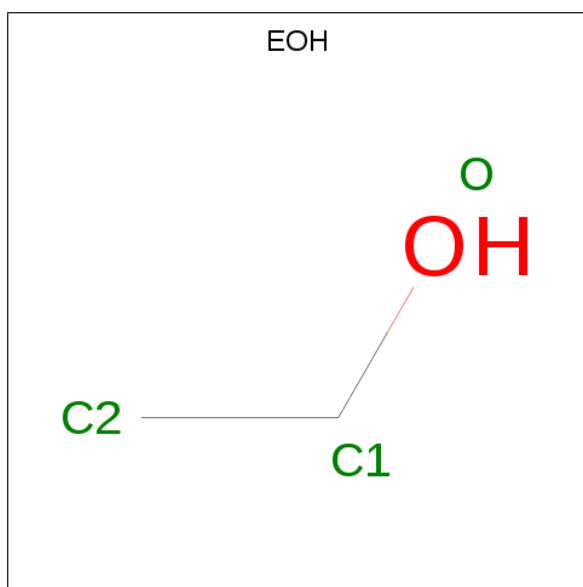
Mol	Chain	Residues	Atoms			ZeroOcc	AltConf
5	A	1	Total	C	N	0	0
			4	1	3		

- Molecule 6 is GLYCEROL (three-letter code: GOL) (formula: C₃H₈O₃).



Mol	Chain	Residues	Atoms			ZeroOcc	AltConf
6	A	1	Total	C	O	0	0
			6	3	3		

- Molecule 7 is ETHANOL (three-letter code: EOH) (formula: C₂H₆O).



Mol	Chain	Residues	Atoms			ZeroOcc	AltConf
7	B	1	Total	C	O	0	0
			3	2	1		

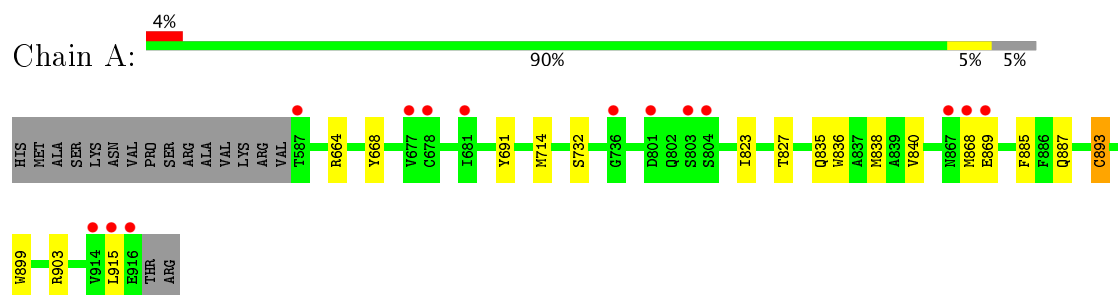
- Molecule 8 is water.

Mol	Chain	Residues	Atoms		ZeroOcc	AltConf
8	A	206	Total	O	0	0
			206	206		
8	B	251	Total	O	0	0
			251	251		

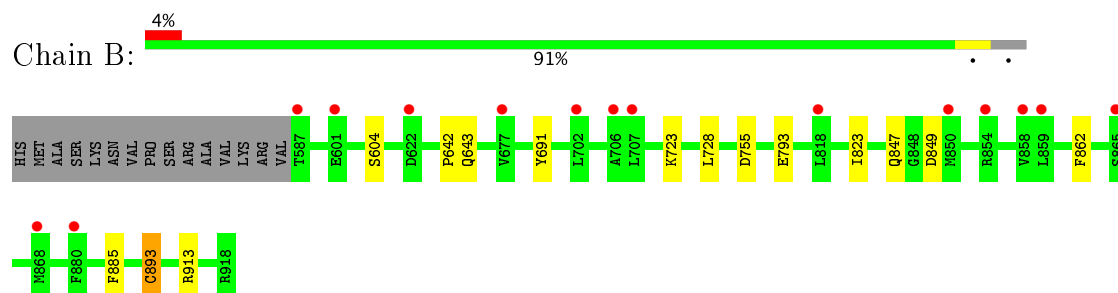
3 Residue-property plots [i](#)

These plots are drawn for all protein, RNA and DNA chains in the entry. The first graphic for a chain summarises the proportions of the various outlier classes displayed in the second graphic. The second graphic shows the sequence view annotated by issues in geometry and electron density. Residues are color-coded according to the number of geometric quality criteria for which they contain at least one outlier: green = 0, yellow = 1, orange = 2 and red = 3 or more. A red dot above a residue indicates a poor fit to the electron density ($RSRZ > 2$). Stretches of 2 or more consecutive residues without any outlier are shown as a green connector. Residues present in the sample, but not in the model, are shown in grey.

- Molecule 1: Class 1 phosphodiesterase PDEB1



- Molecule 1: Class 1 phosphodiesterase PDEB1



4 Data and refinement statistics

Property	Value	Source
Space group	C 1 2 1	Depositor
Cell constants a, b, c, α , β , γ	110.19Å 119.27Å 68.14Å 90.00° 106.97° 90.00°	Depositor
Resolution (Å)	30.96 – 1.95 30.96 – 1.95	Depositor EDS
% Data completeness (in resolution range)	96.9 (30.96-1.95) 96.9 (30.96-1.95)	Depositor EDS
R_{merge}	0.06	Depositor
R_{sym}	(Not available)	Depositor
$\langle I/\sigma(I) \rangle$ ¹	3.16 (at 1.95Å)	Xtriage
Refinement program	PHENIX (phenix.refine: 1.8.4_1496)	Depositor
R, R_{free}	0.160 , 0.192 0.160 , 0.192	Depositor DCC
R_{free} test set	3003 reflections (5.06%)	DCC
Wilson B-factor (Å ²)	26.6	Xtriage
Anisotropy	0.323	Xtriage
Bulk solvent k_{sol} (e/Å ³), B_{sol} (Å ²)	0.36 , 50.3	EDS
L-test for twinning ²	$\langle L \rangle = 0.51$, $\langle L^2 \rangle = 0.35$	Xtriage
Estimated twinning fraction	No twinning to report.	Xtriage
F_o, F_c correlation	0.97	EDS
Total number of atoms	5753	wwPDB-VP
Average B, all atoms (Å ²)	31.0	wwPDB-VP

Xtriage's analysis on translational NCS is as follows: *The largest off-origin peak in the Patterson function is 5.09% of the height of the origin peak. No significant pseudotranslation is detected.*

¹Intensities estimated from amplitudes.

²Theoretical values of $\langle |L| \rangle$, $\langle L^2 \rangle$ for acentric reflections are 0.5, 0.333 respectively for untwinned datasets, and 0.375, 0.2 for perfectly twinned datasets.

5 Model quality [i](#)

5.1 Standard geometry [i](#)

Bond lengths and bond angles in the following residue types are not validated in this section: GOL, ZN, PIL, EOH, MG, GAI

The Z score for a bond length (or angle) is the number of standard deviations the observed value is removed from the expected value. A bond length (or angle) with $|Z| > 5$ is considered an outlier worth inspection. RMSZ is the root-mean-square of all Z scores of the bond lengths (or angles).

Mol	Chain	Bond lengths		Bond angles	
		RMSZ	$\# Z > 5$	RMSZ	$\# Z > 5$
1	A	0.52	1/2653 (0.0%)	0.56	0/3594
1	B	0.54	1/2702 (0.0%)	0.55	0/3653
All	All	0.53	2/5355 (0.0%)	0.56	0/7247

All (2) bond length outliers are listed below:

Mol	Chain	Res	Type	Atoms	Z	Observed(Å)	Ideal(Å)
1	B	893	CYS	CB-SG	-7.45	1.69	1.82
1	A	893	CYS	CB-SG	-5.58	1.72	1.81

There are no bond angle outliers.

There are no chirality outliers.

There are no planarity outliers.

5.2 Too-close contacts [i](#)

In the following table, the Non-H and H(model) columns list the number of non-hydrogen atoms and hydrogen atoms in the chain respectively. The H(added) column lists the number of hydrogen atoms added and optimized by MolProbity. The Clashes column lists the number of clashes within the asymmetric unit, whereas Symm-Clashes lists symmetry related clashes.

Mol	Chain	Non-H	H(model)	H(added)	Clashes	Symm-Clashes
1	A	2596	0	2531	13	0
1	B	2633	0	2604	15	0
2	A	1	0	0	0	0
2	B	1	0	0	0	0
3	A	1	0	0	0	0
3	B	1	0	0	0	0
4	A	25	0	18	3	0

Continued on next page...

Continued from previous page...

Mol	Chain	Non-H	H(model)	H(added)	Clashes	Symm-Clashes
4	B	25	0	18	4	0
5	A	4	0	4	1	0
6	A	6	0	8	4	0
7	B	3	0	6	5	0
8	A	206	0	0	2	0
8	B	251	0	0	6	0
All	All	5753	0	5189	33	0

The all-atom clashscore is defined as the number of clashes found per 1000 atoms (including hydrogen atoms). The all-atom clashscore for this structure is 3.

The worst 5 of 33 close contacts within the same asymmetric unit are listed below, sorted by their clash magnitude.

Atom-1	Atom-2	Interatomic distance (Å)	Clash overlap (Å)
1:A:868:MET:HB3	1:A:869:GLU:HA	1.41	0.97
6:A:1005:GOL:H2	1:B:691:TYR:CD1	2.24	0.72
6:A:1005:GOL:H2	1:B:691:TYR:HD1	1.56	0.70
1:A:868:MET:HB3	1:A:869:GLU:CA	2.24	0.63
1:A:664:ARG:CZ	1:A:714:MET:HG2	2.36	0.55

There are no symmetry-related clashes.

5.3 Torsion angles [i](#)

5.3.1 Protein backbone [i](#)

In the following table, the Percentiles column shows the percent Ramachandran outliers of the chain as a percentile score with respect to all X-ray entries followed by that with respect to entries of similar resolution.

The Analysed column shows the number of residues for which the backbone conformation was analysed, and the total number of residues.

Mol	Chain	Analysed	Favoured	Allowed	Outliers	Percentiles	
1	A	330/347 (95%)	316 (96%)	12 (4%)	2 (1%)	28	15
1	B	336/347 (97%)	330 (98%)	5 (2%)	1 (0%)	44	33
All	All	666/694 (96%)	646 (97%)	17 (3%)	3 (0%)	32	19

All (3) Ramachandran outliers are listed below:

Mol	Chain	Res	Type
1	B	893	CYS
1	A	893	CYS
1	A	915	LEU

5.3.2 Protein sidechains ⓘ

In the following table, the Percentiles column shows the percent sidechain outliers of the chain as a percentile score with respect to all X-ray entries followed by that with respect to entries of similar resolution.

The Analysed column shows the number of residues for which the sidechain conformation was analysed, and the total number of residues.

Mol	Chain	Analysed	Rotameric	Outliers	Percentiles	
1	A	279/299 (93%)	277 (99%)	2 (1%)	87	86
1	B	286/299 (96%)	285 (100%)	1 (0%)	94	93
All	All	565/598 (94%)	562 (100%)	3 (0%)	91	90

All (3) residues with a non-rotameric sidechain are listed below:

Mol	Chain	Res	Type
1	A	732	SER
1	A	899	TRP
1	B	604	SER

Some sidechains can be flipped to improve hydrogen bonding and reduce clashes. There are no such sidechains identified.

5.3.3 RNA ⓘ

There are no RNA molecules in this entry.

5.4 Non-standard residues in protein, DNA, RNA chains ⓘ

There are no non-standard protein/DNA/RNA residues in this entry.

5.5 Carbohydrates ⓘ

There are no carbohydrates in this entry.

5.6 Ligand geometry

Of 9 ligands modelled in this entry, 4 are monoatomic - leaving 5 for Mogul analysis.

In the following table, the Counts columns list the number of bonds (or angles) for which Mogul statistics could be retrieved, the number of bonds (or angles) that are observed in the model and the number of bonds (or angles) that are defined in the Chemical Component Dictionary. The Link column lists molecule types, if any, to which the group is linked. The Z score for a bond length (or angle) is the number of standard deviations the observed value is removed from the expected value. A bond length (or angle) with $|Z| > 2$ is considered an outlier worth inspection. RMSZ is the root-mean-square of all Z scores of the bond lengths (or angles).

Mol	Type	Chain	Res	Link	Bond lengths			Bond angles		
					Counts	RMSZ	# Z > 2	Counts	RMSZ	# Z > 2
4	PIL	A	1003	-	27,27,27	1.47	6 (22%)	37,37,37	1.71	9 (24%)
5	GAI	A	1004	-	3,3,3	2.96	2 (66%)	3,3,3	1.39	0
6	GOL	A	1005	-	5,5,5	0.83	0	5,5,5	0.93	0
4	PIL	B	1003	-	27,27,27	1.50	6 (22%)	37,37,37	2.15	9 (24%)
7	EOH	B	1004	-	2,2,2	0.44	0	1,1,1	0.04	0

In the following table, the Chirals column lists the number of chiral outliers, the number of chiral centers analysed, the number of these observed in the model and the number defined in the Chemical Component Dictionary. Similar counts are reported in the Torsion and Rings columns. '-' means no outliers of that kind were identified.

Mol	Type	Chain	Res	Link	Chirals	Torsions	Rings
4	PIL	A	1003	-	-	0/14/21/21	0/3/3/3
5	GAI	A	1004	-	-	0/0/0/0	0/0/0/0
6	GOL	A	1005	-	-	0/4/4/4	0/0/0/0
4	PIL	B	1003	-	-	0/14/21/21	0/3/3/3
7	EOH	B	1004	-	-	0/0/0/0	0/0/0/0

The worst 5 of 14 bond length outliers are listed below:

Mol	Chain	Res	Type	Atoms	Z	Observed(Å)	Ideal(Å)
4	A	1003	PIL	C18-C19	-2.60	1.36	1.40
4	B	1003	PIL	C18-C19	-2.21	1.36	1.40
4	B	1003	PIL	C18-C24	-2.09	1.36	1.40
4	A	1003	PIL	C7-C6	2.04	1.62	1.48
4	A	1003	PIL	O10-C9	2.55	1.41	1.37

The worst 5 of 18 bond angle outliers are listed below:

Mol	Chain	Res	Type	Atoms	Z	Observed($^{\circ}$)	Ideal($^{\circ}$)
4	B	1003	PIL	C11-O10-C9	-6.42	108.29	117.54
4	B	1003	PIL	O10-C9-C12	-4.78	116.35	124.37
4	A	1003	PIL	C11-O10-C9	-4.41	111.18	117.54
4	A	1003	PIL	C19-C21-N22	-3.42	119.32	122.86
4	A	1003	PIL	O10-C9-C12	-3.29	118.85	124.37

There are no chirality outliers.

There are no torsion outliers.

There are no ring outliers.

5 monomers are involved in 16 short contacts:

Mol	Chain	Res	Type	Clashes	Symm-Clashes
4	A	1003	PIL	3	0
5	A	1004	GAI	1	0
6	A	1005	GOL	4	0
4	B	1003	PIL	4	0
7	B	1004	EOH	5	0

5.7 Other polymers [i](#)

There are no such residues in this entry.

5.8 Polymer linkage issues [i](#)

There are no chain breaks in this entry.

6 Fit of model and data [i](#)

6.1 Protein, DNA and RNA chains [i](#)

In the following table, the column labelled ‘#RSRZ> 2’ contains the number (and percentage) of RSRZ outliers, followed by percent RSRZ outliers for the chain as percentile scores relative to all X-ray entries and entries of similar resolution. The OWAB column contains the minimum, median, 95th percentile and maximum values of the occupancy-weighted average B-factor per residue. The column labelled ‘Q< 0.9’ lists the number of (and percentage) of residues with an average occupancy less than 0.9.

Mol	Chain	Analysed	<RSRZ>	#RSRZ>2	OWAB(Å ²)	Q<0.9
1	A	330/347 (95%)	-0.09	14 (4%) 37 47	17, 30, 53, 86	0
1	B	332/347 (95%)	-0.08	15 (4%) 34 44	17, 27, 49, 68	0
All	All	662/694 (95%)	-0.09	29 (4%) 35 45	17, 28, 50, 86	0

The worst 5 of 29 RSRZ outliers are listed below:

Mol	Chain	Res	Type	RSRZ
1	A	804	SER	4.5
1	B	865	SER	4.2
1	A	803	SER	4.2
1	A	868	MET	4.0
1	B	868	MET	3.3

6.2 Non-standard residues in protein, DNA, RNA chains [i](#)

There are no non-standard protein/DNA/RNA residues in this entry.

6.3 Carbohydrates [i](#)

There are no carbohydrates in this entry.

6.4 Ligands [i](#)

In the following table, the Atoms column lists the number of modelled atoms in the group and the number defined in the chemical component dictionary. LLDF column lists the quality of electron density of the group with respect to its neighbouring residues in protein, DNA or RNA chains. The B-factors column lists the minimum, median, 95th percentile and maximum values of B factors of atoms in the group. The column labelled ‘Q< 0.9’ lists the number of atoms with occupancy less than 0.9.

Mol	Type	Chain	Res	Atoms	RSCC	RSR	LLDF	B-factors(\AA^2)	Q<0.9
6	GOL	A	1005	6/6	0.88	0.14	5.02	26,31,33,36	0
4	PIL	B	1003	25/25	0.76	0.23	3.17	38,53,58,91	25
4	PIL	A	1003	25/25	0.85	0.19	3.07	32,44,61,62	25
7	EOH	B	1004	3/3	0.92	0.12	-0.60	44,44,44,44	0
3	MG	A	1002	1/1	0.96	0.09	-0.73	28,28,28,28	0
3	MG	B	1002	1/1	0.73	0.08	-0.77	50,50,50,50	0
2	ZN	B	1001	1/1	0.99	0.08	-1.75	28,28,28,28	0
2	ZN	A	1001	1/1	1.00	0.06	-1.99	28,28,28,28	0
5	GAI	A	1004	4/4	0.85	0.15	-	40,44,46,46	0

6.5 Other polymers [i](#)

There are no such residues in this entry.