



Full wwPDB X-ray Structure Validation Report ⓘ

Feb 15, 2017 – 12:35 am GMT

PDB ID : 3PJ0
Title : Crystal structure of a putative L-allo-threonine aldolase (lmo0305) from *Listeria monocytogenes* EGD-E at 1.80 Å resolution
Authors : Joint Center for Structural Genomics (JCSG)
Deposited on : 2010-11-08
Resolution : 1.80 Å(reported)

This is a Full wwPDB X-ray Structure Validation Report for a publicly released PDB entry.

We welcome your comments at validation@mail.wwpdb.org

A user guide is available at

<http://wwpdb.org/validation/2016/XrayValidationReportHelp>

with specific help available everywhere you see the ⓘ symbol.

The following versions of software and data (see [references ⓘ](#)) were used in the production of this report:

MolProbity : 4.02b-467
Mogul : 1.7.2 (RC1), CSD as538be (2017)
Xtriage (Phenix) : 1.9-1692
EDS : trunk28620
Percentile statistics : 20161228.v01 (using entries in the PDB archive December 28th 2016)
Refmac : 5.8.0135
CCP4 : 6.5.0
Ideal geometry (proteins) : Engh & Huber (2001)
Ideal geometry (DNA, RNA) : Parkinson et al. (1996)
Validation Pipeline (wwPDB-VP) : recalc28949

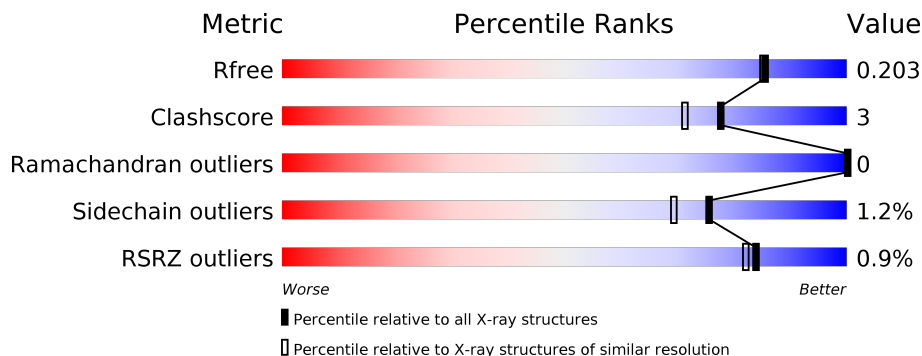
1 Overall quality at a glance

The following experimental techniques were used to determine the structure:

X-RAY DIFFRACTION

The reported resolution of this entry is 1.80 Å.

Percentile scores (ranging between 0-100) for global validation metrics of the entry are shown in the following graphic. The table shows the number of entries on which the scores are based.



Metric	Whole archive (#Entries)	Similar resolution (#Entries, resolution range(Å))
R_{free}	100719	4827 (1.80-1.80)
Clashscore	112137	5742 (1.80-1.80)
Ramachandran outliers	110173	5676 (1.80-1.80)
Sidechain outliers	110143	5675 (1.80-1.80)
RSRZ outliers	101464	4906 (1.80-1.80)

The table below summarises the geometric issues observed across the polymeric chains and their fit to the electron density. The red, orange, yellow and green segments on the lower bar indicate the fraction of residues that contain outliers for ≥ 3 , 2, 1 and 0 types of geometric quality criteria. A grey segment represents the fraction of residues that are not modelled. The numeric value for each fraction is indicated below the corresponding segment, with a dot representing fractions $\leq 5\%$. The upper red bar (where present) indicates the fraction of residues that have poor fit to the electron density. The numeric value is given above the bar.

Mol	Chain	Length	Quality of chain
1	A	359	<div> <div>%</div> <div> <div></div> <div>92%</div> <div>8%</div> </div> </div>
1	B	359	<div> <div></div> <div>97%</div> <div></div> </div>
1	C	359	<div> <div>3%</div> <div> <div></div> <div>90%</div> <div>8%</div> </div> <div></div> </div>
1	D	359	<div> <div>%</div> <div> <div></div> <div>91%</div> <div>9%</div> </div> </div>

2 Entry composition

There are 6 unique types of molecules in this entry. The entry contains 13452 atoms, of which 0 are hydrogens and 0 are deuteriums.

In the tables below, the ZeroOcc column contains the number of atoms modelled with zero occupancy, the AltConf column contains the number of residues with at least one atom in alternate conformation and the Trace column contains the number of residues modelled with at most 2 atoms.

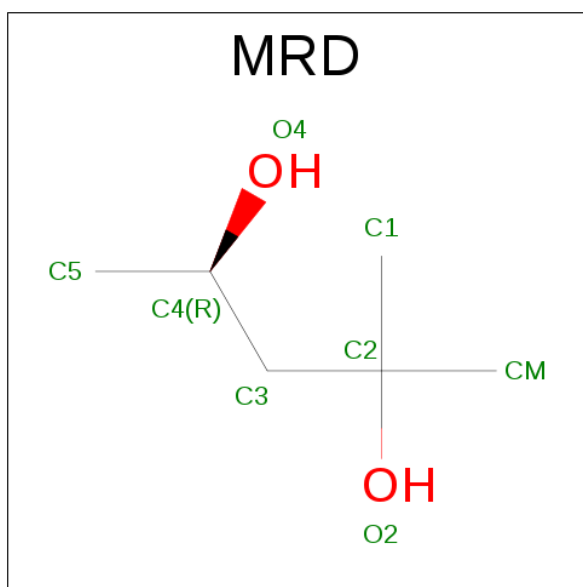
- Molecule 1 is a protein called Lmo0305 protein.

Mol	Chain	Residues	Atoms							ZeroOcc	AltConf	Trace
1	A	359	Total	C	N	O	P	S	Se	0	34	0
			3007	1930	485	582	1	5	4			
1	B	359	Total	C	N	O	P	S	Se	0	31	0
			3007	1924	484	589	1	5	4			
1	C	353	Total	C	N	O	P	S	Se	0	24	0
			2892	1855	464	564	1	5	3			
1	D	359	Total	C	N	O	P	S	Se	0	24	0
			2955	1894	482	568	1	5	5			

There are 4 discrepancies between the modelled and reference sequences:

Chain	Residue	Modelled	Actual	Comment	Reference
A	0	GLY	-	leader sequence	UNP Q8YA56
B	0	GLY	-	leader sequence	UNP Q8YA56
C	0	GLY	-	leader sequence	UNP Q8YA56
D	0	GLY	-	leader sequence	UNP Q8YA56

- Molecule 2 is (4R)-2-METHYLPENTANE-2,4-DIOL (three-letter code: MRD) (formula: C₆H₁₄O₂).



Mol	Chain	Residues	Atoms			ZeroOcc	AltConf
2	A	1	Total	C	O	0	0
			8	6	2		
2	A	1	Total	C	O	0	0
			8	6	2		
2	B	1	Total	C	O	0	0
			8	6	2		
2	B	1	Total	C	O	0	0
			8	6	2		
2	C	1	Total	C	O	0	0
			8	6	2		
2	D	1	Total	C	O	0	0
			8	6	2		

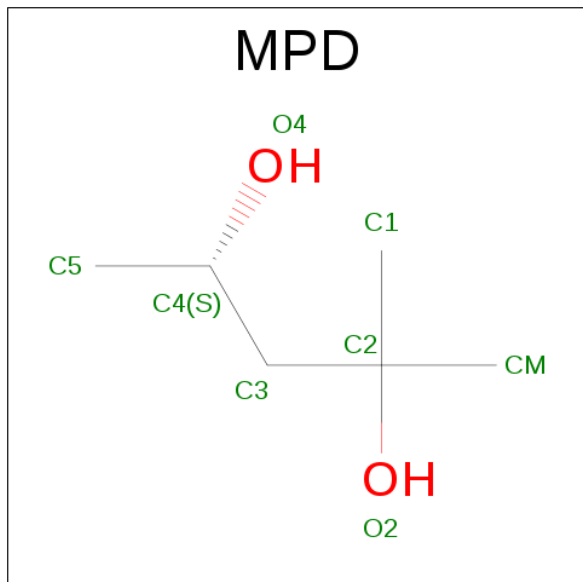
- Molecule 3 is SODIUM ION (three-letter code: NA) (formula: Na).

Mol	Chain	Residues	Atoms		ZeroOcc	AltConf
3	A	1	Total	Na	0	0
			1	1		
3	C	1	Total	Na	0	0
			1	1		

- Molecule 4 is CHLORIDE ION (three-letter code: CL) (formula: Cl).

Mol	Chain	Residues	Atoms		ZeroOcc	AltConf
4	A	1	Total	Cl	0	0
			1	1		

- Molecule 5 is (4S)-2-METHYL-2,4-PENTANEDIOL (three-letter code: MPD) (formula: $C_6H_{14}O_2$).



Mol	Chain	Residues	Atoms			ZeroOcc	AltConf
5	D	1	Total	C	O	0	0
			8	6	2		

- Molecule 6 is water.

Mol	Chain	Residues	Atoms		ZeroOcc	AltConf
6	A	420	Total	O	0	4
			424	424		
6	B	414	Total	O	0	3
			417	417		
6	C	318	Total	O	0	2
			320	320		
6	D	370	Total	O	0	1
			371	371		

3 Residue-property plots [i](#)

These plots are drawn for all protein, RNA and DNA chains in the entry. The first graphic for a chain summarises the proportions of the various outlier classes displayed in the second graphic. The second graphic shows the sequence view annotated by issues in geometry and electron density. Residues are color-coded according to the number of geometric quality criteria for which they contain at least one outlier: green = 0, yellow = 1, orange = 2 and red = 3 or more. A red dot above a residue indicates a poor fit to the electron density ($RSRZ > 2$). Stretches of 2 or more consecutive residues without any outlier are shown as a green connector. Residues present in the sample, but not in the model, are shown in grey.

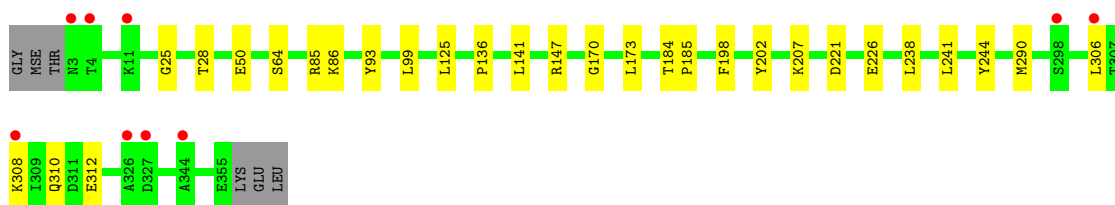
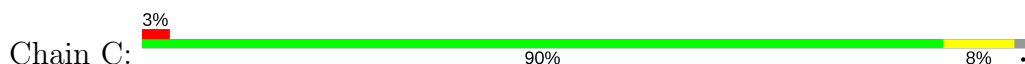
- Molecule 1: Lmo0305 protein



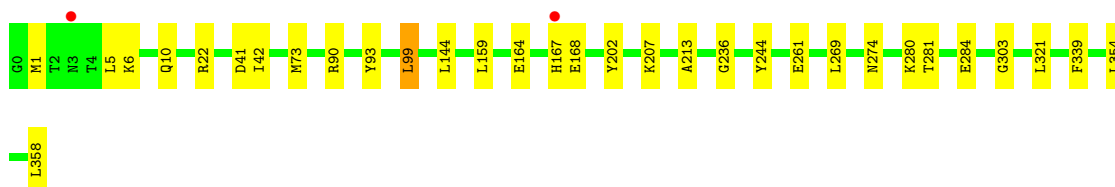
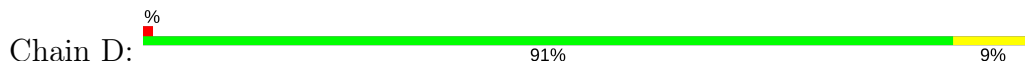
- Molecule 1: Lmo0305 protein



- Molecule 1: Lmo0305 protein



- Molecule 1: Lmo0305 protein



4 Data and refinement statistics

Property	Value	Source
Space group	P 1 21 1	Depositor
Cell constants a, b, c, α , β , γ	85.59Å 96.64Å 99.48Å 90.00° 110.81° 90.00°	Depositor
Resolution (Å)	29.70 – 1.80 29.70 – 1.80	Depositor EDS
% Data completeness (in resolution range)	98.9 (29.70-1.80) 98.9 (29.70-1.80)	Depositor EDS
R_{merge}	(Not available)	Depositor
R_{sym}	(Not available)	Depositor
$\langle I/\sigma(I) \rangle$ ¹	2.65 (at 1.80Å)	Xtriage
Refinement program	REFMAC 5.5.0110	Depositor
R, R_{free}	0.162 , 0.198 0.168 , 0.203	Depositor DCC
R_{free} test set	6965 reflections (5.30%)	DCC
Wilson B-factor (Å ²)	15.9	Xtriage
Anisotropy	0.442	Xtriage
Bulk solvent k_{sol} (e/Å ³), B_{sol} (Å ²)	0.35 , 50.3	EDS
L-test for twinning ²	$\langle L \rangle = 0.48$, $\langle L^2 \rangle = 0.31$	Xtriage
Estimated twinning fraction	No twinning to report.	Xtriage
F_o, F_c correlation	0.95	EDS
Total number of atoms	13452	wwPDB-VP
Average B, all atoms (Å ²)	18.0	wwPDB-VP

Xtriage's analysis on translational NCS is as follows: *The analyses of the Patterson function reveals a significant off-origin peak that is 31.21 % of the origin peak, indicating pseudo translational symmetry. The chance of finding a peak of this or larger height randomly in a structure without pseudo translational symmetry is equal to 1.1496e-03.*

¹Intensities estimated from amplitudes.

²Theoretical values of $\langle |L| \rangle$, $\langle L^2 \rangle$ for acentric reflections are 0.5, 0.333 respectively for untwinned datasets, and 0.375, 0.2 for perfectly twinned datasets.

5 Model quality

5.1 Standard geometry

Bond lengths and bond angles in the following residue types are not validated in this section: MRD, NA, MPD, LLP, CL

The Z score for a bond length (or angle) is the number of standard deviations the observed value is removed from the expected value. A bond length (or angle) with $|Z| > 5$ is considered an outlier worth inspection. RMSZ is the root-mean-square of all Z scores of the bond lengths (or angles).

Mol	Chain	Bond lengths		Bond angles	
		RMSZ	# Z >5	RMSZ	# Z >5
1	A	0.66	0/3121	0.74	2/4201 (0.0%)
1	B	0.63	0/3080	0.72	0/4151
1	C	0.62	0/2987	0.70	0/4039
1	D	0.60	0/3046	0.72	1/4108 (0.0%)
All	All	0.63	0/12234	0.72	3/16499 (0.0%)

There are no bond length outliers.

All (3) bond angle outliers are listed below:

Mol	Chain	Res	Type	Atoms	Z	Observed(°)	Ideal(°)
1	A	89	ARG	NE-CZ-NH1	5.54	123.07	120.30
1	A	89	ARG	NE-CZ-NH2	-5.41	117.59	120.30
1	D	99	LEU	CA-CB-CG	5.27	127.42	115.30

There are no chirality outliers.

There are no planarity outliers.

5.2 Too-close contacts

In the following table, the Non-H and H(model) columns list the number of non-hydrogen atoms and hydrogen atoms in the chain respectively. The H(added) column lists the number of hydrogen atoms added and optimized by MolProbity. The Clashes column lists the number of clashes within the asymmetric unit, whereas Symm-Clashes lists symmetry related clashes.

Mol	Chain	Non-H	H(model)	H(added)	Clashes	Symm-Clashes
1	A	3007	0	2992	22	0
1	B	3007	0	2967	7	0
1	C	2892	0	2828	21	0
1	D	2955	0	2933	38	0

Continued on next page...

Continued from previous page...

Mol	Chain	Non-H	H(model)	H(added)	Clashes	Symm-Clashes
2	A	16	0	28	0	0
2	B	16	0	28	0	0
2	C	8	0	14	0	0
2	D	8	0	14	3	0
3	A	1	0	0	0	0
3	C	1	0	0	0	0
4	A	1	0	0	0	0
5	D	8	0	14	0	0
6	A	424	0	0	1	0
6	B	417	0	0	0	0
6	C	320	0	0	1	0
6	D	371	0	0	3	0
All	All	13452	0	11818	82	0

The all-atom clashscore is defined as the number of clashes found per 1000 atoms (including hydrogen atoms). The all-atom clashscore for this structure is 3.

All (82) close contacts within the same asymmetric unit are listed below, sorted by their clash magnitude.

Atom-1	Atom-2	Interatomic distance (Å)	Clash overlap (Å)
1:C:244[B]:TYR:CE2	1:D:244[B]:TYR:HE2	1.38	1.40
1:A:244[B]:TYR:HE2	1:B:244[B]:TYR:CE2	1.44	1.35
1:A:244[B]:TYR:CE2	1:B:244[B]:TYR:HE2	1.51	1.27
1:C:244[B]:TYR:HE2	1:D:244[B]:TYR:CE2	1.53	1.24
1:C:244[B]:TYR:CE2	1:D:244[B]:TYR:CE2	2.31	1.11
1:D:167:HIS:HB2	2:D:360:MRD:H1C3	1.31	1.10
1:D:1[B]:MSE:CE	1:D:5:LEU:HD22	1.86	1.04
1:A:272[B]:ARG:HG3	1:A:351:PHE:CD1	2.08	0.88
1:A:244[B]:TYR:CE2	1:B:244[B]:TYR:CE2	2.36	0.88
1:D:1[B]:MSE:HE2	1:D:5:LEU:HD22	1.56	0.86
1:D:167:HIS:HB2	2:D:360:MRD:C1	2.05	0.84
1:D:280[A]:LYS:HZ1	1:D:284:GLU:HG3	1.47	0.79
1:D:1[B]:MSE:HE1	1:D:5:LEU:HD22	1.65	0.77
1:D:1[B]:MSE:CE	1:D:5:LEU:CD2	2.62	0.76
1:D:1[B]:MSE:HE3	1:D:303:GLY:HA3	1.67	0.74
1:D:1[B]:MSE:HE3	1:D:321:LEU:HD12	1.67	0.74
1:D:1[B]:MSE:HE3	1:D:303:GLY:CA	2.20	0.72
1:D:1[B]:MSE:HE1	1:D:5:LEU:CD2	2.19	0.72
1:D:167:HIS:CB	2:D:360:MRD:H1C3	2.15	0.71
1:A:272[B]:ARG:HG3	1:A:351:PHE:CG	2.30	0.66
1:B:155:ALA:HB3	1:B:158[B]:GLU:HG3	1.77	0.66

Continued on next page...

Continued from previous page...

Atom-1	Atom-2	Interatomic distance (Å)	Clash overlap (Å)
1:D:1[B]:MSE:CE	1:D:321:LEU:HD12	2.26	0.64
1:D:280[A]:LYS:NZ	1:D:284:GLU:HG3	2.12	0.64
1:D:1[B]:MSE:HE2	1:D:5:LEU:CD2	2.27	0.62
1:D:280[A]:LYS:HZ1	1:D:284:GLU:CG	2.12	0.62
1:C:207:LLP:O3	1:C:207:LLP:NZ	2.33	0.61
1:D:280[A]:LYS:HE3	1:D:281:THR:O	2.01	0.60
1:C:64[B]:SER:OG	1:C:221[B]:ASP:OD1	2.20	0.57
1:B:165:TYR:O	1:B:168[B]:GLU:HG2	2.06	0.56
1:D:280[A]:LYS:NZ	1:D:284:GLU:CG	2.70	0.54
1:A:269[B]:LEU:HD11	1:A:339:PHE:CD1	2.43	0.54
1:D:1[B]:MSE:CE	1:D:303:GLY:HA3	2.37	0.53
1:B:207:LLP:NZ	1:B:207:LLP:O3	2.41	0.53
1:C:85:ARG:NH2	1:C:226[A]:GLU:OE2	2.36	0.52
1:D:207:LLP:O3	1:D:207:LLP:NZ	2.42	0.52
1:C:308[B]:LYS:CG	1:C:312[B]:GLU:OE2	2.58	0.52
1:C:238[A]:LEU:HD12	1:C:241:LEU:CD2	2.40	0.52
1:D:1[B]:MSE:HE2	1:D:5:LEU:HB2	1.90	0.52
1:D:274:ASN:OD1	1:D:280[A]:LYS:HD2	2.10	0.52
1:D:6:LYS:O	1:D:10[B]:GLN:HG2	2.10	0.52
1:A:272[B]:ARG:CG	1:A:351:PHE:CG	2.94	0.50
1:D:261:GLU:OE2	6:D:1148:HOH:O	2.18	0.50
1:A:213:ALA:HB3	1:A:244[B]:TYR:CD1	2.47	0.50
1:C:308[B]:LYS:HG3	1:C:312[B]:GLU:OE2	2.11	0.50
1:A:297:ASN:HB2	1:A:302:ILE:HD11	1.93	0.49
1:D:269[A]:LEU:HD21	1:D:339:PHE:CE1	2.47	0.49
1:D:22[A]:ARG:NH2	6:D:941:HOH:O	2.44	0.49
1:A:277[A]:SER:O	1:A:358:LEU:HD13	2.13	0.48
1:D:144:LEU:HD11	1:D:159:LEU:HD21	1.96	0.48
1:C:306:LEU:O	1:C:310:GLN:HG3	2.14	0.48
1:D:354[A]:LEU:HG	1:D:358:LEU:CD1	2.44	0.48
1:A:269[B]:LEU:HD11	1:A:339:PHE:CE1	2.49	0.48
1:A:261:GLU:OE2	6:A:1540:HOH:O	2.20	0.47
1:D:269[A]:LEU:HD21	1:D:339:PHE:HE1	1.79	0.47
1:A:277[B]:SER:O	1:A:358:LEU:HD13	2.14	0.47
1:D:22[A]:ARG:NH1	6:D:726:HOH:O	2.47	0.47
1:A:73:MSE:SE	1:A:236:GLY:HA3	2.65	0.46
1:D:41:ASP:O	1:D:42:ILE:HD13	2.15	0.46
1:A:213:ALA:HB3	1:A:244[B]:TYR:CE1	2.52	0.45
1:C:238[A]:LEU:HD12	1:C:241:LEU:HD23	1.99	0.45
1:A:269[B]:LEU:HD21	1:A:339:PHE:HE1	1.83	0.44
1:C:141:LEU:HD23	1:C:141:LEU:C	2.38	0.44

Continued on next page...

Continued from previous page...

Atom-1	Atom-2	Interatomic distance (Å)	Clash overlap (Å)
1:B:213[B]:ALA:HB3	1:B:244[B]:TYR:CD1	2.52	0.44
1:A:207:LLP:NZ	1:A:207:LLP:O3	2.49	0.44
1:D:73:MSE:SE	1:D:236:GLY:HA3	2.68	0.44
1:C:173:LEU:HG	1:C:198:PHE:CD2	2.53	0.43
1:A:221[B]:ASP:O	1:A:225:GLN:HG2	2.18	0.43
1:C:147:ARG:HG2	1:C:290:MSE:HE1	2.01	0.43
1:A:41:ASP:O	1:A:42:ILE:HD13	2.19	0.42
1:D:164:GLU:O	1:D:168[A]:GLU:HG3	2.20	0.42
1:A:11[B]:LYS:NZ	1:A:11[B]:LYS:CB	2.83	0.41
1:C:25:GLY:HA2	1:C:28[A]:THR:OG1	2.20	0.41
1:C:125:LEU:HD12	1:C:125:LEU:C	2.41	0.41
1:C:308[B]:LYS:HG2	1:C:312[B]:GLU:OE2	2.19	0.41
1:C:86:LYS:HE3	1:C:170:GLY:O	2.20	0.41
1:C:238[A]:LEU:HD12	1:C:241:LEU:HD21	2.02	0.41
1:C:184:THR:N	1:C:185:PRO:CD	2.84	0.41
1:A:154:PRO:HG2	1:A:159[B]:LEU:HG	2.02	0.41
1:D:1[B]:MSE:HE2	1:D:5:LEU:CB	2.50	0.41
1:A:147:ARG:HG2	1:A:290:MSE:HE1	2.03	0.41
1:C:50:GLU:HG2	6:C:876:HOH:O	2.20	0.40
1:D:213:ALA:HB3	1:D:244[B]:TYR:CD1	2.57	0.40

There are no symmetry-related clashes.

5.3 Torsion angles ⓘ

5.3.1 Protein backbone ⓘ

In the following table, the Percentiles column shows the percent Ramachandran outliers of the chain as a percentile score with respect to all X-ray entries followed by that with respect to entries of similar resolution.

The Analysed column shows the number of residues for which the backbone conformation was analysed, and the total number of residues.

Mol	Chain	Analysed	Favoured	Allowed	Outliers	Percentiles	
1	A	388/359 (108%)	385 (99%)	3 (1%)	0	100	100
1	B	383/359 (107%)	378 (99%)	5 (1%)	0	100	100
1	C	374/359 (104%)	370 (99%)	4 (1%)	0	100	100
1	D	380/359 (106%)	376 (99%)	4 (1%)	0	100	100
All	All	1525/1436 (106%)	1509 (99%)	16 (1%)	0	100	100

There are no Ramachandran outliers to report.

5.3.2 Protein sidechains ⓘ

In the following table, the Percentiles column shows the percent sidechain outliers of the chain as a percentile score with respect to all X-ray entries followed by that with respect to entries of similar resolution.

The Analysed column shows the number of residues for which the sidechain conformation was analysed, and the total number of residues.

Mol	Chain	Analysed	Rotameric	Outliers	Percentiles	
1	A	329/295 (112%)	326 (99%)	3 (1%)	82	78
1	B	325/295 (110%)	321 (99%)	4 (1%)	75	69
1	C	312/295 (106%)	308 (99%)	4 (1%)	73	66
1	D	319/295 (108%)	314 (98%)	5 (2%)	68	58
All	All	1285/1180 (109%)	1269 (99%)	16 (1%)	75	69

All (16) residues with a non-rotameric sidechain are listed below:

Mol	Chain	Res	Type
1	A	90	ARG
1	A	93	TYR
1	A	202	TYR
1	B	86[A]	LYS
1	B	86[B]	LYS
1	B	93	TYR
1	B	202	TYR
1	C	93	TYR
1	C	99	LEU
1	C	136	PRO
1	C	202	TYR
1	D	90[A]	ARG
1	D	90[B]	ARG
1	D	93	TYR
1	D	99	LEU
1	D	202	TYR

Some sidechains can be flipped to improve hydrogen bonding and reduce clashes. There are no such sidechains identified.

5.3.3 RNA ⓘ

There are no RNA molecules in this entry.

5.4 Non-standard residues in protein, DNA, RNA chains ⓘ

4 non-standard protein/DNA/RNA residues are modelled in this entry.

In the following table, the Counts columns list the number of bonds (or angles) for which Mogul statistics could be retrieved, the number of bonds (or angles) that are observed in the model and the number of bonds (or angles) that are defined in the chemical component dictionary. The Link column lists molecule types, if any, to which the group is linked. The Z score for a bond length (or angle) is the number of standard deviations the observed value is removed from the expected value. A bond length (or angle) with $|Z| > 2$ is considered an outlier worth inspection. RMSZ is the root-mean-square of all Z scores of the bond lengths (or angles).

Mol	Type	Chain	Res	Link	Bond lengths			Bond angles		
					Counts	RMSZ	# $ Z > 2$	Counts	RMSZ	# $ Z > 2$
1	LLP	A	207	1	24,24,25	1.76	5 (20%)	28,32,34	2.13	7 (25%)
1	LLP	B	207	1	24,24,25	1.89	6 (25%)	28,32,34	2.09	7 (25%)
1	LLP	C	207	1	24,24,25	1.79	5 (20%)	28,32,34	1.92	8 (28%)
1	LLP	D	207	1	24,24,25	1.85	5 (20%)	28,32,34	1.74	6 (21%)

In the following table, the Chirals column lists the number of chiral outliers, the number of chiral centers analysed, the number of these observed in the model and the number defined in the chemical component dictionary. Similar counts are reported in the Torsion and Rings columns. '-' means no outliers of that kind were identified.

Mol	Type	Chain	Res	Link	Chirals	Torsions	Rings
1	LLP	A	207	1	-	0/15/17/19	0/1/1/1
1	LLP	B	207	1	-	0/15/17/19	0/1/1/1
1	LLP	C	207	1	-	0/15/17/19	0/1/1/1
1	LLP	D	207	1	-	0/15/17/19	0/1/1/1

All (21) bond length outliers are listed below:

Mol	Chain	Res	Type	Atoms	Z	Observed(Å)	Ideal(Å)
1	B	207	LLP	O3-C3	-5.64	1.24	1.37
1	C	207	LLP	O3-C3	-5.06	1.25	1.37
1	D	207	LLP	O3-C3	-5.03	1.25	1.37
1	A	207	LLP	O3-C3	-4.64	1.26	1.37
1	B	207	LLP	C3-C2	-3.87	1.38	1.40
1	C	207	LLP	CE-NZ	-2.19	1.42	1.46

Continued on next page...

Continued from previous page...

Mol	Chain	Res	Type	Atoms	Z	Observed(Å)	Ideal(Å)
1	A	207	LLP	C2-N1	2.03	1.38	1.33
1	D	207	LLP	C6-N1	2.15	1.39	1.34
1	B	207	LLP	C2-N1	2.20	1.38	1.33
1	B	207	LLP	CA-C	2.25	1.53	1.50
1	B	207	LLP	C4'-NZ	2.33	1.34	1.27
1	C	207	LLP	C4'-NZ	2.37	1.34	1.27
1	B	207	LLP	C4-C4'	2.56	1.51	1.46
1	C	207	LLP	C2-N1	2.63	1.39	1.33
1	D	207	LLP	C4'-NZ	3.09	1.36	1.27
1	A	207	LLP	C4'-NZ	3.24	1.36	1.27
1	A	207	LLP	CA-C	3.25	1.54	1.50
1	D	207	LLP	CA-C	3.35	1.54	1.50
1	A	207	LLP	C4-C4'	3.36	1.52	1.46
1	D	207	LLP	C4-C4'	3.63	1.53	1.46
1	C	207	LLP	CA-C	4.11	1.55	1.50

All (28) bond angle outliers are listed below:

Mol	Chain	Res	Type	Atoms	Z	Observed(°)	Ideal(°)
1	A	207	LLP	OP4-P-OP1	-3.68	96.14	106.47
1	B	207	LLP	OP4-P-OP1	-3.64	96.26	106.47
1	C	207	LLP	C4-C4'-NZ	-3.48	107.74	124.66
1	A	207	LLP	C5'-C5-C6	-3.08	114.03	119.33
1	B	207	LLP	C4-C4'-NZ	-3.00	110.08	124.66
1	A	207	LLP	C4-C4'-NZ	-2.98	110.17	124.66
1	D	207	LLP	C4-C4'-NZ	-2.59	112.06	124.66
1	B	207	LLP	C5-C6-N1	-2.38	119.84	123.87
1	B	207	LLP	O-C-CA	-2.38	118.45	125.02
1	D	207	LLP	C5'-C5-C6	-2.33	115.31	119.33
1	C	207	LLP	OP3-P-OP4	-2.33	100.53	106.73
1	C	207	LLP	C5-C6-N1	-2.28	120.01	123.87
1	C	207	LLP	C4-C3-C2	-2.20	118.80	120.15
1	A	207	LLP	O-C-CA	-2.16	119.05	125.02
1	C	207	LLP	O-C-CA	-2.12	119.17	125.02
1	D	207	LLP	C5-C6-N1	-2.09	120.34	123.87
1	C	207	LLP	C5'-C5-C6	-2.00	115.89	119.33
1	D	207	LLP	C5-C4-C4'	2.05	124.43	121.36
1	A	207	LLP	CD-CE-NZ	2.38	116.14	110.88
1	B	207	LLP	C3-C4-C5	2.50	120.14	118.24
1	D	207	LLP	CD-CE-NZ	2.62	116.67	110.88
1	A	207	LLP	C5'-C5-C4	2.72	126.41	121.66
1	B	207	LLP	CB-CA-C	3.14	116.83	111.65

Continued on next page...

Continued from previous page...

Mol	Chain	Res	Type	Atoms	Z	Observed(°)	Ideal(°)
1	C	207	LLP	CB-CA-C	3.15	116.85	111.65
1	D	207	LLP	OP4-C5'-C5	5.67	120.72	109.32
1	C	207	LLP	OP4-C5'-C5	5.89	121.17	109.32
1	B	207	LLP	OP4-C5'-C5	6.66	122.72	109.32
1	A	207	LLP	OP4-C5'-C5	7.55	124.50	109.32

There are no chirality outliers.

There are no torsion outliers.

There are no ring outliers.

4 monomers are involved in 4 short contacts:

Mol	Chain	Res	Type	Clashes	Symm-Clashes
1	A	207	LLP	1	0
1	B	207	LLP	1	0
1	C	207	LLP	1	0
1	D	207	LLP	1	0

5.5 Carbohydrates [i](#)

There are no carbohydrates in this entry.

5.6 Ligand geometry [i](#)

Of 10 ligands modelled in this entry, 3 are monoatomic - leaving 7 for Mogul analysis.

In the following table, the Counts columns list the number of bonds (or angles) for which Mogul statistics could be retrieved, the number of bonds (or angles) that are observed in the model and the number of bonds (or angles) that are defined in the chemical component dictionary. The Link column lists molecule types, if any, to which the group is linked. The Z score for a bond length (or angle) is the number of standard deviations the observed value is removed from the expected value. A bond length (or angle) with $|Z| > 2$ is considered an outlier worth inspection. RMSZ is the root-mean-square of all Z scores of the bond lengths (or angles).

Mol	Type	Chain	Res	Link	Bond lengths			Bond angles		
					Counts	RMSZ	$\# Z > 2$	Counts	RMSZ	$\# Z > 2$
2	MRD	A	359	-	7,7,7	0.29	0	9,10,10	0.33	0
2	MRD	A	362	-	7,7,7	0.31	0	9,10,10	0.30	0
2	MRD	B	363	-	7,7,7	0.25	0	9,10,10	0.26	0
2	MRD	B	364	-	7,7,7	0.31	0	9,10,10	0.21	0
2	MRD	C	365	-	7,7,7	0.39	0	9,10,10	0.61	0
2	MRD	D	360	-	7,7,7	0.30	0	9,10,10	0.64	0

Mol	Type	Chain	Res	Link	Bond lengths			Bond angles		
					Counts	RMSZ	# Z > 2	Counts	RMSZ	# Z > 2
5	MPD	D	361	-	7,7,7	0.27	0	9,10,10	0.48	0

In the following table, the Chirals column lists the number of chiral outliers, the number of chiral centers analysed, the number of these observed in the model and the number defined in the chemical component dictionary. Similar counts are reported in the Torsion and Rings columns. '-' means no outliers of that kind were identified.

Mol	Type	Chain	Res	Link	Chirals	Torsions	Rings
2	MRD	A	359	-	-	0/5/5/5	0/0/0/0
2	MRD	A	362	-	-	0/5/5/5	0/0/0/0
2	MRD	B	363	-	-	0/5/5/5	0/0/0/0
2	MRD	B	364	-	-	0/5/5/5	0/0/0/0
2	MRD	C	365	-	-	0/5/5/5	0/0/0/0
2	MRD	D	360	-	-	0/5/5/5	0/0/0/0
5	MPD	D	361	-	-	0/5/5/5	0/0/0/0

There are no bond length outliers.

There are no bond angle outliers.

There are no chirality outliers.

There are no torsion outliers.

There are no ring outliers.

1 monomer is involved in 3 short contacts:

Mol	Chain	Res	Type	Clashes	Symm-Clashes
2	D	360	MRD	3	0

5.7 Other polymers [i](#)

There are no such residues in this entry.

5.8 Polymer linkage issues [i](#)

There are no chain breaks in this entry.

6 Fit of model and data [i](#)

6.1 Protein, DNA and RNA chains [i](#)

In the following table, the column labelled ‘#RSRZ> 2’ contains the number (and percentage) of RSRZ outliers, followed by percent RSRZ outliers for the chain as percentile scores relative to all X-ray entries and entries of similar resolution. The OWAB column contains the minimum, median, 95th percentile and maximum values of the occupancy-weighted average B-factor per residue. The column labelled ‘Q< 0.9’ lists the number of (and percentage) of residues with an average occupancy less than 0.9.

Mol	Chain	Analysed	<RSRZ>	#RSRZ>2	OWAB(Å ²)	Q<0.9
1	A	354/359 (98%)	-0.52	2 (0%) 89 87	8, 13, 27, 45	0
1	B	354/359 (98%)	-0.49	0 100 100	8, 15, 28, 34	0
1	C	349/359 (97%)	-0.24	9 (2%) 56 52	9, 16, 46, 54	0
1	D	354/359 (98%)	-0.34	2 (0%) 89 87	10, 17, 31, 39	0
All	All	1411/1436 (98%)	-0.40	13 (0%) 84 82	8, 15, 34, 54	0

All (13) RSRZ outliers are listed below:

Mol	Chain	Res	Type	RSRZ
1	C	3	ASN	4.5
1	C	326	ALA	3.7
1	C	4	THR	3.1
1	C	306	LEU	2.9
1	C	327	ASP	2.8
1	A	0[A]	GLY	2.7
1	C	11	LYS	2.7
1	A	358	LEU	2.5
1	D	167	HIS	2.5
1	C	298	SER	2.3
1	C	344	ALA	2.2
1	C	308[A]	LYS	2.1
1	D	3	ASN	2.0

6.2 Non-standard residues in protein, DNA, RNA chains [i](#)

In the following table, the Atoms column lists the number of modelled atoms in the group and the number defined in the chemical component dictionary. LLDF column lists the quality of electron density of the group with respect to its neighbouring residues in protein, DNA or RNA chains. The B-factors column lists the minimum, median, 95th percentile and maximum values of B factors of atoms in the group. The column labelled ‘Q< 0.9’ lists the number of atoms with occupancy

less than 0.9.

Mol	Type	Chain	Res	Atoms	RSCC	RSR	LLDF	B-factors(\AA^2)	Q<0.9
1	LLP	B	207	24/25	0.97	0.09	-	9,12,17,19	0
1	LLP	C	207	24/25	0.98	0.09	-	11,13,18,20	0
1	LLP	A	207	24/25	0.98	0.09	-	8,12,15,17	0
1	LLP	D	207	24/25	0.97	0.08	-	9,14,18,19	0

6.3 Carbohydrates [i](#)

There are no carbohydrates in this entry.

6.4 Ligands [i](#)

In the following table, the Atoms column lists the number of modelled atoms in the group and the number defined in the chemical component dictionary. LLDF column lists the quality of electron density of the group with respect to its neighbouring residues in protein, DNA or RNA chains. The B-factors column lists the minimum, median, 95th percentile and maximum values of B factors of atoms in the group. The column labelled 'Q< 0.9' lists the number of atoms with occupancy less than 0.9.

Mol	Type	Chain	Res	Atoms	RSCC	RSR	LLDF	B-factors(\AA^2)	Q<0.9
2	MRD	B	363	8/8	0.88	0.11	1.70	32,34,35,36	0
2	MRD	A	362	8/8	0.91	0.11	1.14	35,36,37,37	0
3	NA	A	366	1/1	0.92	0.10	1.04	27,27,27,27	0
2	MRD	D	360	8/8	0.88	0.14	1.01	41,42,43,43	0
3	NA	C	367	1/1	0.94	0.13	0.11	37,37,37,37	0
2	MRD	A	359	8/8	0.92	0.10	0.02	15,19,21,22	0
2	MRD	C	365	8/8	0.93	0.11	-0.07	24,25,26,27	0
2	MRD	B	364	8/8	0.94	0.08	-0.63	26,27,27,28	0
5	MPD	D	361	8/8	0.94	0.08	-0.70	23,26,28,28	0
4	CL	A	368	1/1	0.98	0.07	-	27,27,27,27	0

6.5 Other polymers [i](#)

There are no such residues in this entry.