



wwPDB X-ray Structure Validation Summary Report ⓘ

Aug 1, 2017 – 07:53 PM EDT

PDB ID : 1PKG
Title : Structure of a c-Kit Kinase Product Complex
Authors : Mol, C.D.; Lim, K.B.; Sridhar, V.; Zou, H.; Chien, E.Y.T.; Sang, B.-C.;
Nowakowski, J.; Kassel, D.B.; Cronin, C.N.; McRee, D.E.
Deposited on : unknown
Resolution : 2.90 Å(reported)

This is a wwPDB X-ray Structure Validation Summary Report for a publicly released PDB entry.

We welcome your comments at validation@mail.wwpdb.org

A user guide is available at

<http://wwpdb.org/validation/2016/XrayValidationReportHelp>

with specific help available everywhere you see the ⓘ symbol.

The following versions of software and data (see [references ⓘ](#)) were used in the production of this report:

MolProbity : 4.02b-467
Mogul : 1.7.2 (RC1), CSD as538be (2017)
Xtriage (Phenix) : **NOT EXECUTED**
EDS : **NOT EXECUTED**
Percentile statistics : 20161228.v01 (using entries in the PDB archive December 28th 2016)
Ideal geometry (proteins) : Engh & Huber (2001)
Ideal geometry (DNA, RNA) : Parkinson et al. (1996)
Validation Pipeline (wwPDB-VP) : rb-20029824

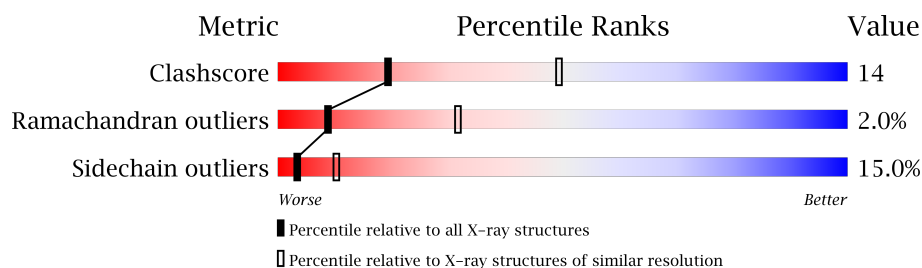
1 Overall quality at a glance

The following experimental techniques were used to determine the structure:

X-RAY DIFFRACTION

The reported resolution of this entry is 2.90 Å.

Percentile scores (ranging between 0-100) for global validation metrics of the entry are shown in the following graphic. The table shows the number of entries on which the scores are based.



Metric	Whole archive (#Entries)	Similar resolution (#Entries, resolution range(Å))
Clashscore	112137	1807 (2.90-2.90)
Ramachandran outliers	110173	1768 (2.90-2.90)
Sidechain outliers	110143	1770 (2.90-2.90)

The table below summarises the geometric issues observed across the polymeric chains and their fit to the electron density. The red, orange, yellow and green segments on the lower bar indicate the fraction of residues that contain outliers for ≥ 3 , 2, 1 and 0 types of geometric quality criteria. A grey segment represents the fraction of residues that are not modelled. The numeric value for each fraction is indicated below the corresponding segment, with a dot representing fractions $\leq 5\%$. The upper red bar (where present) indicates the fraction of residues that have poor fit to the electron density. The numeric value is given above the bar.

Note EDS was not executed.

Mol	Chain	Length	Quality of chain
1	A	329	
1	B	329	

2 Entry composition

There are 4 unique types of molecules in this entry. The entry contains 4619 atoms, of which 0 are hydrogens and 0 are deuteriums.

In the tables below, the ZeroOcc column contains the number of atoms modelled with zero occupancy, the AltConf column contains the number of residues with at least one atom in alternate conformation and the Trace column contains the number of residues modelled with at most 2 atoms.

- Molecule 1 is a protein called c-kit protein.

Mol	Chain	Residues	Atoms						ZeroOcc	AltConf	Trace
1	A	292	Total	C	N	O	P	S	0	0	0
			2328	1500	386	421	2	19			
1	B	279	Total	C	N	O	P	S	0	0	0
			2232	1442	368	401	2	19			

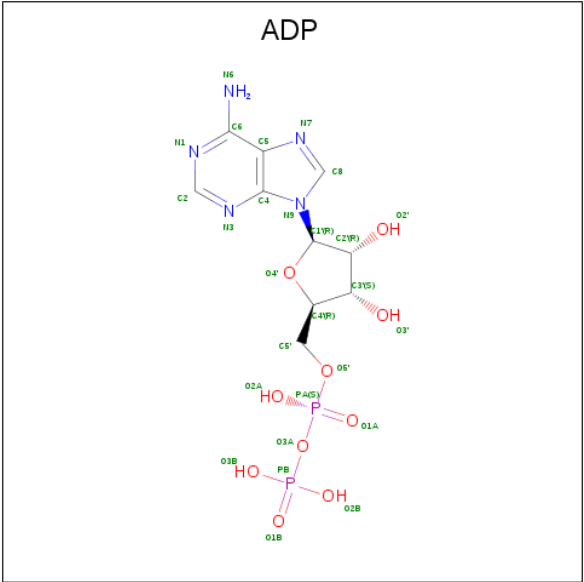
There are 4 discrepancies between the modelled and reference sequences:

Chain	Residue	Modelled	Actual	Comment	Reference
A	568	PTR	TYR	MODIFIED RESIDUE	UNP P10721
A	570	PTR	TYR	MODIFIED RESIDUE	UNP P10721
A	752	THR	-	SEE REMARK 999	UNP P10721
A	753	SER	-	SEE REMARK 999	UNP P10721

- Molecule 2 is MAGNESIUM ION (three-letter code: MG) (formula: Mg).

Mol	Chain	Residues	Atoms		ZeroOcc	AltConf
2	B	1	Total	Mg	0	0
			1	1		
2	A	1	Total	Mg	0	0
			1	1		

- Molecule 3 is ADENOSINE-5'-DIPHOSPHATE (three-letter code: ADP) (formula: C₁₀H₁₅N₅O₁₀P₂).



Mol	Chain	Residues	Atoms					ZeroOcc	AltConf
3	A	1	Total	C	N	O	P	0	0
			27	10	5	10	2		
3	B	1	Total	C	N	O	P	0	0
			27	10	5	10	2		

- Molecule 4 is water.

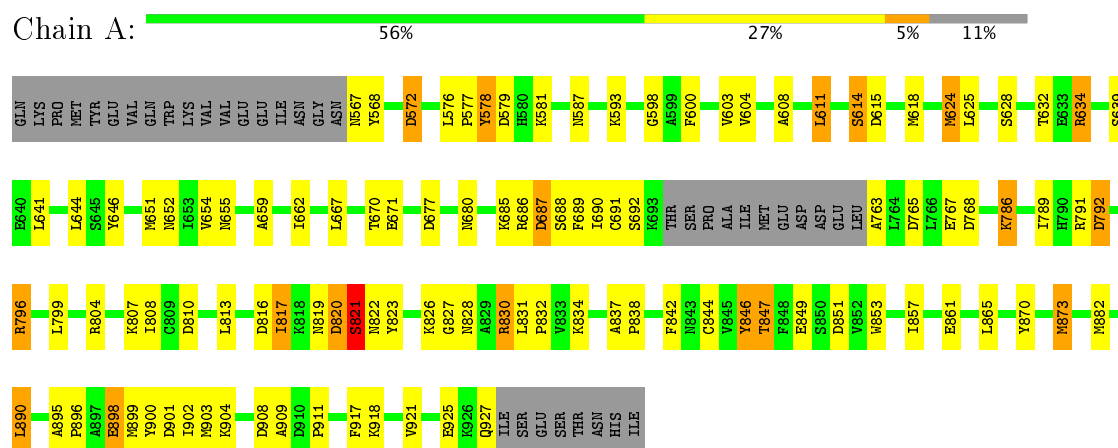
Mol	Chain	Residues	Atoms		ZeroOcc	AltConf
4	A	3	Total	O	0	0
			3	3		

3 Residue-property plots

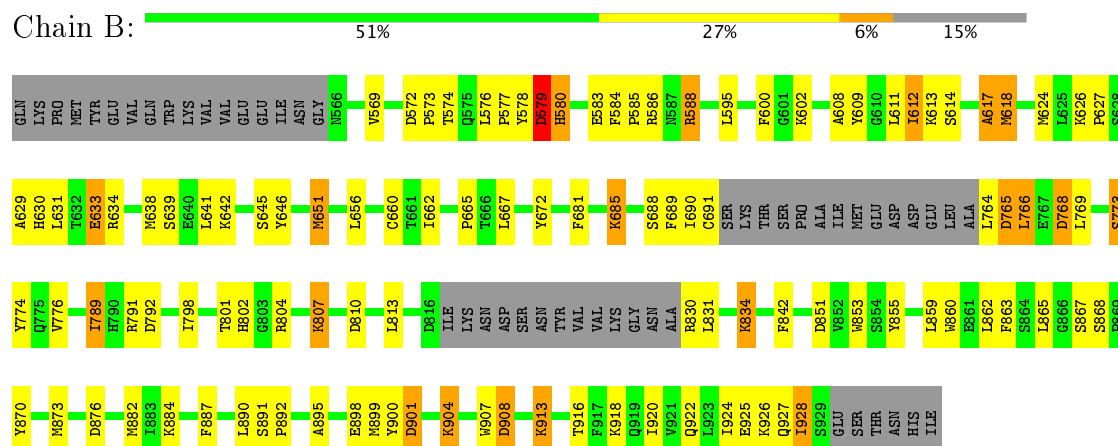
These plots are drawn for all protein, RNA and DNA chains in the entry. The first graphic for a chain summarises the proportions of the various outlier classes displayed in the second graphic. The second graphic shows the sequence view annotated by issues in geometry and electron density. Residues are color-coded according to the number of geometric quality criteria for which they contain at least one outlier: green = 0, yellow = 1, orange = 2 and red = 3 or more. A red dot above a residue indicates a poor fit to the electron density ($RSRZ > 2$). Stretches of 2 or more consecutive residues without any outlier are shown as a green connector. Residues present in the sample, but not in the model, are shown in grey.

Note EDS was not executed.

- Molecule 1: c-kit protein



- Molecule 1: c-kit protein



4 Data and refinement statistics

Xtriage (Phenix) and EDS were not executed - this section is therefore incomplete.

Property	Value	Source
Space group	P 21 21 2	Depositor
Cell constants a, b, c, α , β , γ	92.67 Å 116.46 Å 60.07 Å 90.00° 90.00° 90.00°	Depositor
Resolution (Å)	10.00 – 2.90	Depositor
% Data completeness (in resolution range)	97.1 (10.00-2.90)	Depositor
R_{merge}	(Not available)	Depositor
R_{sym}	(Not available)	Depositor
Refinement program	REFMAC 5.1.19	Depositor
R, R_{free}	0.225 , 0.311	Depositor
Estimated twinning fraction	No twinning to report.	Xtriage
Total number of atoms	4619	wwPDB-VP
Average B, all atoms (Å ²)	16.0	wwPDB-VP

5 Model quality

5.1 Standard geometry

Bond lengths and bond angles in the following residue types are not validated in this section: MG, PTR, ADP

The Z score for a bond length (or angle) is the number of standard deviations the observed value is removed from the expected value. A bond length (or angle) with $|Z| > 5$ is considered an outlier worth inspection. RMSZ is the root-mean-square of all Z scores of the bond lengths (or angles).

Mol	Chain	Bond lengths		Bond angles	
		RMSZ	$\# Z > 5$	RMSZ	$\# Z > 5$
1	A	0.64	1/2349 (0.0%)	0.91	10/3172 (0.3%)
1	B	0.59	0/2251	0.86	7/3038 (0.2%)
All	All	0.62	1/4600 (0.0%)	0.89	17/6210 (0.3%)

Chiral center outliers are detected by calculating the chiral volume of a chiral center and verifying if the center is modelled as a planar moiety or with the opposite hand. A planarity outlier is detected by checking planarity of atoms in a peptide group, atoms in a mainchain group or atoms of a sidechain that are expected to be planar.

Mol	Chain	#Chirality outliers	#Planarity outliers
1	A	0	3

All (1) bond length outliers are listed below:

Mol	Chain	Res	Type	Atoms	Z	Observed(Å)	Ideal(Å)
1	A	821	SER	C-N	5.77	1.47	1.34

The worst 5 of 17 bond angle outliers are listed below:

Mol	Chain	Res	Type	Atoms	Z	Observed(°)	Ideal(°)
1	B	876	ASP	CB-CG-OD2	7.88	125.39	118.30
1	A	851	ASP	CB-CG-OD2	7.82	125.34	118.30
1	B	901	ASP	CB-CG-OD2	7.79	125.31	118.30
1	A	792	ASP	CB-CG-OD2	7.33	124.89	118.30
1	A	810	ASP	CB-CG-OD2	7.12	124.71	118.30

There are no chirality outliers.

All (3) planarity outliers are listed below:

Mol	Chain	Res	Type	Group
1	A	820	ASP	Mainchain
1	A	821	SER	Mainchain
1	A	828	ASN	Peptide

5.2 Too-close contacts [i](#)

In the following table, the Non-H and H(model) columns list the number of non-hydrogen atoms and hydrogen atoms in the chain respectively. The H(added) column lists the number of hydrogen atoms added and optimized by MolProbity. The Clashes column lists the number of clashes within the asymmetric unit, whereas Symm-Clashes lists symmetry related clashes.

Mol	Chain	Non-H	H(model)	H(added)	Clashes	Symm-Clashes
1	A	2328	0	2321	69	0
1	B	2232	0	2227	67	0
2	A	1	0	0	0	0
2	B	1	0	0	0	0
3	A	27	0	12	7	0
3	B	27	0	12	0	0
4	A	3	0	0	0	0
All	All	4619	0	4572	133	0

The all-atom clashscore is defined as the number of clashes found per 1000 atoms (including hydrogen atoms). The all-atom clashscore for this structure is 14.

The worst 5 of 133 close contacts within the same asymmetric unit are listed below, sorted by their clash magnitude.

Atom-1	Atom-2	Interatomic distance (Å)	Clash overlap (Å)
1:A:899:MET:HE1	1:A:902:ILE:HD12	1.42	1.02
1:A:817:ILE:HG23	1:A:821:SER:HA	1.42	0.99
1:B:689:PHE:CD1	1:B:865:LEU:HD11	2.11	0.85
1:A:817:ILE:CG2	1:A:821:SER:HA	2.10	0.81
1:B:626:LYS:HB3	1:B:627:PRO:HD2	1.63	0.81

There are no symmetry-related clashes.

5.3 Torsion angles [i](#)

5.3.1 Protein backbone [i](#)

In the following table, the Percentiles column shows the percent Ramachandran outliers of the chain as a percentile score with respect to all X-ray entries followed by that with respect to entries

of similar resolution.

The Analysed column shows the number of residues for which the backbone conformation was analysed, and the total number of residues.

Mol	Chain	Analysed	Favoured	Allowed	Outliers	Percentiles	
1	A	286/329 (87%)	256 (90%)	24 (8%)	6 (2%)	8	30
1	B	271/329 (82%)	245 (90%)	21 (8%)	5 (2%)	10	34
All	All	557/658 (85%)	501 (90%)	45 (8%)	11 (2%)	9	31

5 of 11 Ramachandran outliers are listed below:

Mol	Chain	Res	Type
1	A	578	TYR
1	A	692	SER
1	A	822	ASN
1	B	579	ASP
1	B	617	ALA

5.3.2 Protein sidechains ⓘ

In the following table, the Percentiles column shows the percent sidechain outliers of the chain as a percentile score with respect to all X-ray entries followed by that with respect to entries of similar resolution.

The Analysed column shows the number of residues for which the sidechain conformation was analysed, and the total number of residues.

Mol	Chain	Analysed	Rotameric	Outliers	Percentiles	
1	A	249/285 (87%)	215 (86%)	34 (14%)	4	12
1	B	239/285 (84%)	200 (84%)	39 (16%)	3	8
All	All	488/570 (86%)	415 (85%)	73 (15%)	3	10

5 of 73 residues with a non-rotameric sidechain are listed below:

Mol	Chain	Res	Type
1	A	925	GLU
1	B	618	MET
1	B	904	LYS
1	B	602	LYS
1	B	631	LEU

Some sidechains can be flipped to improve hydrogen bonding and reduce clashes. 5 of 8 such

sidechains are listed below:

Mol	Chain	Res	Type
1	A	652	ASN
1	A	922	GLN
1	A	819	ASN
1	A	649	ASN
1	A	680	ASN

5.3.3 RNA ⓘ

There are no RNA molecules in this entry.

5.4 Non-standard residues in protein, DNA, RNA chains ⓘ

4 non-standard protein/DNA/RNA residues are modelled in this entry.

In the following table, the Counts columns list the number of bonds (or angles) for which Mogul statistics could be retrieved, the number of bonds (or angles) that are observed in the model and the number of bonds (or angles) that are defined in the chemical component dictionary. The Link column lists molecule types, if any, to which the group is linked. The Z score for a bond length (or angle) is the number of standard deviations the observed value is removed from the expected value. A bond length (or angle) with $|Z| > 2$ is considered an outlier worth inspection. RMSZ is the root-mean-square of all Z scores of the bond lengths (or angles).

Mol	Type	Chain	Res	Link	Bond lengths			Bond angles		
					Counts	RMSZ	$\# Z > 2$	Counts	RMSZ	$\# Z > 2$
1	PTR	A	568	1,2	15,16,17	2.14	2 (13%)	19,22,24	0.66	0
1	PTR	A	570	1	15,16,17	1.73	2 (13%)	19,22,24	0.90	1 (5%)
1	PTR	B	568	1,2	15,16,17	2.00	1 (6%)	19,22,24	0.96	2 (10%)
1	PTR	B	570	1	15,16,17	1.83	2 (13%)	19,22,24	1.12	4 (21%)

In the following table, the Chirals column lists the number of chiral outliers, the number of chiral centers analysed, the number of these observed in the model and the number defined in the chemical component dictionary. Similar counts are reported in the Torsion and Rings columns. '-' means no outliers of that kind were identified.

Mol	Type	Chain	Res	Link	Chirals	Torsions	Rings
1	PTR	A	568	1,2	-	0/9/11/13	0/1/1/1
1	PTR	A	570	1	-	0/9/11/13	0/1/1/1
1	PTR	B	568	1,2	-	0/9/11/13	0/1/1/1
1	PTR	B	570	1	-	0/9/11/13	0/1/1/1

The worst 5 of 7 bond length outliers are listed below:

Mol	Chain	Res	Type	Atoms	Z	Observed(Å)	Ideal(Å)
1	A	568	PTR	OH-CZ	-7.86	1.22	1.40
1	B	568	PTR	OH-CZ	-7.29	1.23	1.40
1	B	570	PTR	OH-CZ	-6.54	1.25	1.40
1	A	570	PTR	OH-CZ	-5.96	1.26	1.40
1	B	570	PTR	CA-C	2.04	1.52	1.50

The worst 5 of 7 bond angle outliers are listed below:

Mol	Chain	Res	Type	Atoms	Z	Observed(°)	Ideal(°)
1	A	570	PTR	O-C-CA	-2.51	118.09	125.02
1	B	568	PTR	O-C-CA	-2.29	118.70	125.02
1	B	570	PTR	CB-CA-C	-2.14	107.28	111.41
1	B	570	PTR	O-C-CA	-2.00	119.49	125.02
1	B	570	PTR	OH-CZ-CE1	2.22	125.91	119.23

There are no chirality outliers.

There are no torsion outliers.

There are no ring outliers.

1 monomer is involved in 2 short contacts:

Mol	Chain	Res	Type	Clashes	Symm-Clashes
1	A	568	PTR	2	0

5.5 Carbohydrates

There are no carbohydrates in this entry.

5.6 Ligand geometry

Of 4 ligands modelled in this entry, 2 are monoatomic - leaving 2 for Mogul analysis.

In the following table, the Counts columns list the number of bonds (or angles) for which Mogul statistics could be retrieved, the number of bonds (or angles) that are observed in the model and the number of bonds (or angles) that are defined in the chemical component dictionary. The Link column lists molecule types, if any, to which the group is linked. The Z score for a bond length (or angle) is the number of standard deviations the observed value is removed from the expected value. A bond length (or angle) with $|Z| > 2$ is considered an outlier worth inspection. RMSZ is the root-mean-square of all Z scores of the bond lengths (or angles).

Mol	Type	Chain	Res	Link	Bond lengths			Bond angles		
					Counts	RMSZ	# Z > 2	Counts	RMSZ	# Z > 2
3	ADP	A	1480	2	25,29,29	1.10	2 (8%)	24,45,45	2.11	1 (4%)
3	ADP	B	1486	2	25,29,29	1.16	2 (8%)	24,45,45	1.94	1 (4%)

In the following table, the Chirals column lists the number of chiral outliers, the number of chiral centers analysed, the number of these observed in the model and the number defined in the chemical component dictionary. Similar counts are reported in the Torsion and Rings columns. '-' means no outliers of that kind were identified.

Mol	Type	Chain	Res	Link	Chirals	Torsions	Rings
3	ADP	A	1480	2	-	0/12/32/32	0/3/3/3
3	ADP	B	1486	2	-	0/12/32/32	0/3/3/3

All (4) bond length outliers are listed below:

Mol	Chain	Res	Type	Atoms	Z	Observed(Å)	Ideal(Å)
3	A	1480	ADP	C2-N1	2.52	1.38	1.33
3	B	1486	ADP	C2-N1	2.72	1.39	1.33
3	A	1480	ADP	C2-N3	3.83	1.38	1.32
3	B	1486	ADP	C2-N3	3.93	1.38	1.32

All (2) bond angle outliers are listed below:

Mol	Chain	Res	Type	Atoms	Z	Observed(°)	Ideal(°)
3	A	1480	ADP	N3-C2-N1	-9.39	120.68	128.86
3	B	1486	ADP	N3-C2-N1	-8.72	121.26	128.86

There are no chirality outliers.

There are no torsion outliers.

There are no ring outliers.

1 monomer is involved in 7 short contacts:

Mol	Chain	Res	Type	Clashes	Symm-Clashes
3	A	1480	ADP	7	0

5.7 Other polymers ⓘ

There are no such residues in this entry.

5.8 Polymer linkage issues ⓘ

There are no chain breaks in this entry.

6 Fit of model and data ⓘ

6.1 Protein, DNA and RNA chains ⓘ

EDS was not executed - this section is therefore empty.

6.2 Non-standard residues in protein, DNA, RNA chains ⓘ

EDS was not executed - this section is therefore empty.

6.3 Carbohydrates ⓘ

EDS was not executed - this section is therefore empty.

6.4 Ligands ⓘ

EDS was not executed - this section is therefore empty.

6.5 Other polymers ⓘ

EDS was not executed - this section is therefore empty.