



wwPDB X-ray Structure Validation Summary Report ⓘ

Aug 29, 2017 – 08:21 PM EDT

PDB ID : 4PNK
Title : G protein-coupled receptor kinase 2 in complex with GSK180736A
Authors : Homan, K.T.; Larimore, K.M.; Elkins, J.; Knapp, S.; Tesmer, J.J.G.
Deposited on : unknown
Resolution : 2.56 Å(reported)

This is a wwPDB X-ray Structure Validation Summary Report for a publicly released PDB entry.

We welcome your comments at validation@mail.wwpdb.org

A user guide is available at

<http://wwpdb.org/validation/2016/XrayValidationReportHelp>

with specific help available everywhere you see the ⓘ symbol.

The following versions of software and data (see [references ⓘ](#)) were used in the production of this report:

MolProbity : 4.02b-467
Mogul : 1.7.2 (RC1), CSD as538be (2017)
Xtriage (Phenix) : 1.9-1692
EDS : rb-20029824
Percentile statistics : 20161228.v01 (using entries in the PDB archive December 28th 2016)
Refmac : 5.8.0135
CCP4 : 6.5.0
Ideal geometry (proteins) : Engh & Huber (2001)
Ideal geometry (DNA, RNA) : Parkinson et al. (1996)
Validation Pipeline (wwPDB-VP) : rb-20029824

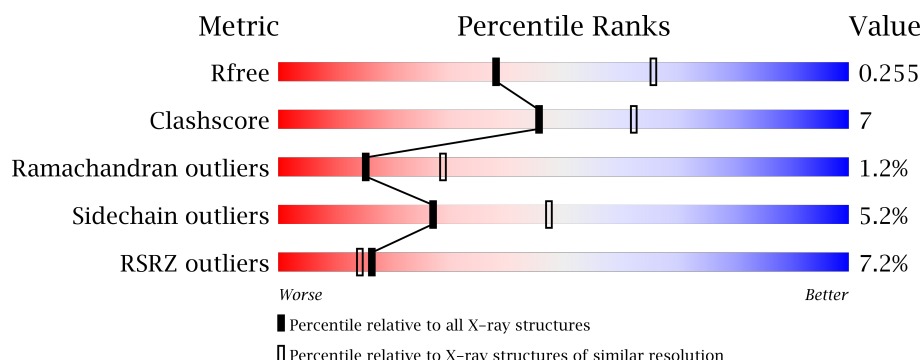
1 Overall quality at a glance

The following experimental techniques were used to determine the structure:

X-RAY DIFFRACTION

The reported resolution of this entry is 2.56 Å.

Percentile scores (ranging between 0-100) for global validation metrics of the entry are shown in the following graphic. The table shows the number of entries on which the scores are based.



Metric	Whole archive (#Entries)	Similar resolution (#Entries, resolution range(Å))
R_{free}	100719	3689 (2.60-2.52)
Clashscore	112137	4096 (2.60-2.52)
Ramachandran outliers	110173	4037 (2.60-2.52)
Sidechain outliers	110143	4037 (2.60-2.52)
RSRZ outliers	101464	3700 (2.60-2.52)

The table below summarises the geometric issues observed across the polymeric chains and their fit to the electron density. The red, orange, yellow and green segments on the lower bar indicate the fraction of residues that contain outliers for ≥ 3 , 2, 1 and 0 types of geometric quality criteria. A grey segment represents the fraction of residues that are not modelled. The numeric value for each fraction is indicated below the corresponding segment, with a dot representing fractions $\leq 5\%$. The upper red bar (where present) indicates the fraction of residues that have poor fit to the electron density. The numeric value is given above the bar.

Mol	Chain	Length	Quality of chain
1	A	689	<div> <div>9%</div> <div> <div></div> <div>70%</div> <div>18%</div> <div>9%</div> </div> </div>
2	B	340	<div> <div>%</div> <div> <div></div> <div>80%</div> <div>18%</div> <div>.</div> </div> </div>
3	G	71	<div> <div>10%</div> <div> <div></div> <div>79%</div> <div>7%</div> <div>.</div> <div>13%</div> </div> </div>

2 Entry composition

There are 5 unique types of molecules in this entry. The entry contains 8322 atoms, of which 0 are hydrogens and 0 are deuteriums.

In the tables below, the ZeroOcc column contains the number of atoms modelled with zero occupancy, the AltConf column contains the number of residues with at least one atom in alternate conformation and the Trace column contains the number of residues modelled with at most 2 atoms.

- Molecule 1 is a protein called Beta-adrenergic receptor kinase 1.

Mol	Chain	Residues	Atoms					ZeroOcc	AltConf	Trace
1	A	625	Total	C	N	O	S	0	0	0
			5123	3265	896	927	35			

- Molecule 2 is a protein called Guanine nucleotide-binding protein G(I)/G(S)/G(T) subunit beta-1.

Mol	Chain	Residues	Atoms					ZeroOcc	AltConf	Trace
2	B	339	Total	C	N	O	S	0	2	0
			2619	1613	470	513	23			

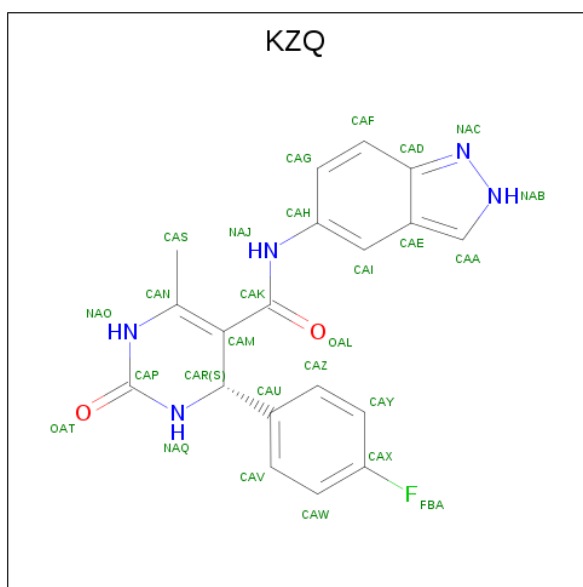
- Molecule 3 is a protein called Guanine nucleotide-binding protein G(I)/G(S)/G(O) subunit gamma-2.

Mol	Chain	Residues	Atoms					ZeroOcc	AltConf	Trace
3	G	62	Total	C	N	O	S	0	0	0
			484	307	84	90	3			

There is a discrepancy between the modelled and reference sequences:

Chain	Residue	Modelled	Actual	Comment	Reference
G	68	SER	CYS	engineered mutation	UNP P63212

- Molecule 4 is (4S)-4-(4-fluorophenyl)-N-(2H-indazol-5-yl)-6-methyl-2-oxo-1,2,3,4-tetrahydro pyrimidine-5-carboxamide (three-letter code: KZQ) (formula: C₁₉H₁₆FN₅O₂).



Mol	Chain	Residues	Atoms					ZeroOcc	AltConf
4	A	1	Total	C	F	N	O	0	0
			27	19	1	5	2		

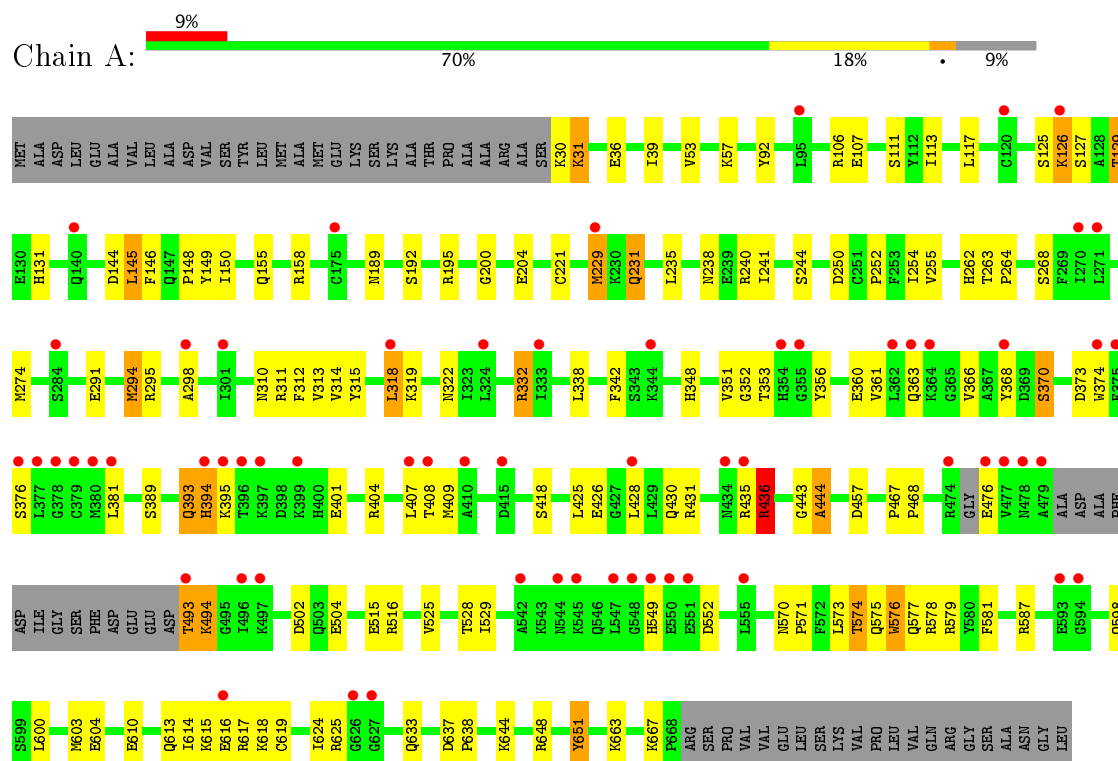
- Molecule 5 is water.

Mol	Chain	Residues	Atoms	ZeroOcc	AltConf
5	A	35	Total O 35 35	0	0
5	B	32	Total O 32 32	0	0
5	G	2	Total O 2 2	0	0

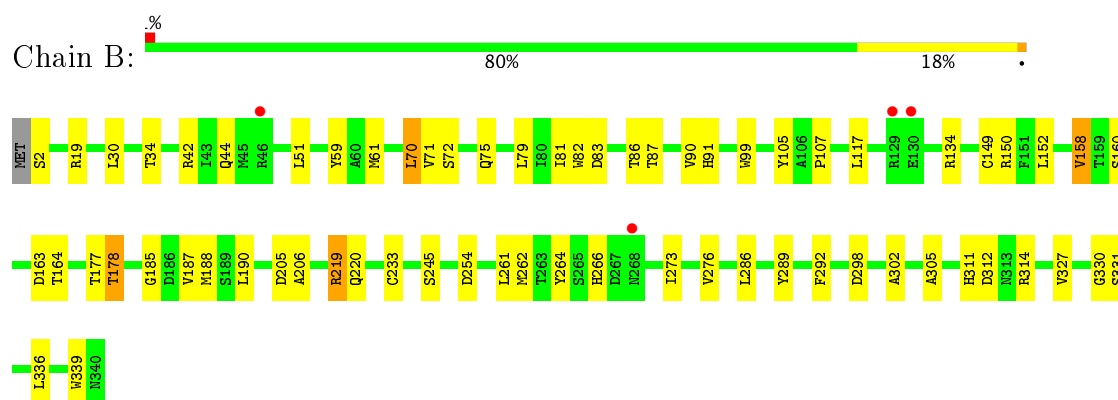
3 Residue-property plots

These plots are drawn for all protein, RNA and DNA chains in the entry. The first graphic for a chain summarises the proportions of the various outlier classes displayed in the second graphic. The second graphic shows the sequence view annotated by issues in geometry and electron density. Residues are color-coded according to the number of geometric quality criteria for which they contain at least one outlier: green = 0, yellow = 1, orange = 2 and red = 3 or more. A red dot above a residue indicates a poor fit to the electron density ($RSRZ > 2$). Stretches of 2 or more consecutive residues without any outlier are shown as a green connector. Residues present in the sample, but not in the model, are shown in grey.

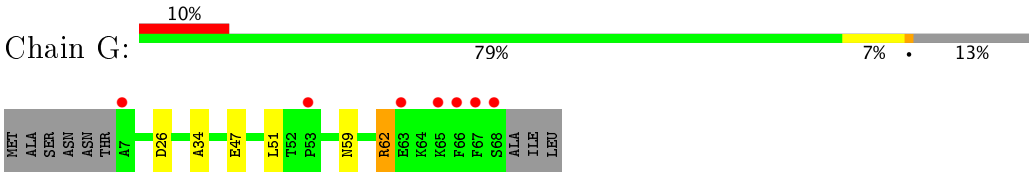
- Molecule 1: Beta-adrenergic receptor kinase 1



- Molecule 2: Guanine nucleotide-binding protein G(I)/G(S)/G(T) subunit beta-1



- Molecule 3: Guanine nucleotide-binding protein G(I)/G(S)/G(O) subunit gamma-2



GLOBAL-STATISTICS INFOmissingINFO

4 Model quality [i](#)

4.1 Standard geometry [i](#)

Bond lengths and bond angles in the following residue types are not validated in this section: KZQ

The Z score for a bond length (or angle) is the number of standard deviations the observed value is removed from the expected value. A bond length (or angle) with $|Z| > 5$ is considered an outlier worth inspection. RMSZ is the root-mean-square of all Z scores of the bond lengths (or angles).

Mol	Chain	Bond lengths		Bond angles	
		RMSZ	$\# Z > 5$	RMSZ	$\# Z > 5$
1	A	0.81	2/5238 (0.0%)	0.96	4/7038 (0.1%)
2	B	0.85	0/2666	1.03	6/3613 (0.2%)
3	G	0.82	0/492	0.90	0/661
All	All	0.82	2/8396 (0.0%)	0.98	10/11312 (0.1%)

Chiral center outliers are detected by calculating the chiral volume of a chiral center and verifying if the center is modelled as a planar moiety or with the opposite hand. A planarity outlier is detected by checking planarity of atoms in a peptide group, atoms in a mainchain group or atoms of a sidechain that are expected to be planar.

Mol	Chain	#Chirality outliers	#Planarity outliers
1	A	0	2

All (2) bond length outliers are listed below:

Mol	Chain	Res	Type	Atoms	Z	Observed(Å)	Ideal(Å)
1	A	576	TRP	CB-CG	-5.79	1.39	1.50
1	A	348	HIS	C-O	5.21	1.33	1.23

The worst 5 of 10 bond angle outliers are listed below:

Mol	Chain	Res	Type	Atoms	Z	Observed(°)	Ideal(°)
1	A	295	ARG	NE-CZ-NH2	-6.74	116.93	120.30
1	A	436	ARG	NE-CZ-NH1	6.15	123.38	120.30
2	B	314	ARG	NE-CZ-NH2	-6.14	117.23	120.30
1	A	516	ARG	NE-CZ-NH1	-5.97	117.31	120.30
2	B	219	ARG	NE-CZ-NH1	5.76	123.18	120.30

There are no chirality outliers.

All (2) planarity outliers are listed below:

Mol	Chain	Res	Type	Group
1	A	494	LYS	Peptide
1	A	616	GLU	Peptide

4.2 Too-close contacts

In the following table, the Non-H and H(model) columns list the number of non-hydrogen atoms and hydrogen atoms in the chain respectively. The H(added) column lists the number of hydrogen atoms added and optimized by MolProbity. The Clashes column lists the number of clashes within the asymmetric unit, whereas Symm-Clashes lists symmetry related clashes.

Mol	Chain	Non-H	H(model)	H(added)	Clashes	Symm-Clashes
1	A	5123	0	5114	78	0
2	B	2619	0	2518	40	0
3	G	484	0	496	2	0
4	A	27	0	16	3	0
5	A	35	0	0	3	0
5	B	32	0	0	2	0
5	G	2	0	0	0	0
All	All	8322	0	8144	120	0

The all-atom clashscore is defined as the number of clashes found per 1000 atoms (including hydrogen atoms). The all-atom clashscore for this structure is 7.

The worst 5 of 120 close contacts within the same asymmetric unit are listed below, sorted by their clash magnitude.

Atom-1	Atom-2	Interatomic distance (Å)	Clash overlap (Å)
2:B:42:ARG:NH2	5:B:417:HOH:O	1.89	1.06
2:B:42:ARG:CZ	5:B:417:HOH:O	2.15	0.89
1:A:493:THR:O	1:A:494:LYS:CE	2.28	0.82
1:A:493:THR:O	1:A:494:LYS:HE3	1.82	0.79
1:A:131:HIS:CD2	1:A:148:PRO:HG2	2.24	0.73

There are no symmetry-related clashes.

4.3 Torsion angles

4.3.1 Protein backbone

In the following table, the Percentiles column shows the percent Ramachandran outliers of the chain as a percentile score with respect to all X-ray entries followed by that with respect to entries of similar resolution.

The Analysed column shows the number of residues for which the backbone conformation was analysed, and the total number of residues.

Mol	Chain	Analysed	Favoured	Allowed	Outliers	Percentiles	
1	A	619/689 (90%)	548 (88%)	60 (10%)	11 (2%)	10	17
2	B	339/340 (100%)	309 (91%)	30 (9%)	0	100	100
3	G	60/71 (84%)	57 (95%)	2 (3%)	1 (2%)	11	19
All	All	1018/1100 (92%)	914 (90%)	92 (9%)	12 (1%)	15	29

5 of 12 Ramachandran outliers are listed below:

Mol	Chain	Res	Type
1	A	250	ASP
1	A	444	ALA
3	G	62	ARG
1	A	145	LEU
1	A	407	LEU

4.3.2 Protein sidechains ⓘ

In the following table, the Percentiles column shows the percent sidechain outliers of the chain as a percentile score with respect to all X-ray entries followed by that with respect to entries of similar resolution.

The Analysed column shows the number of residues for which the sidechain conformation was analysed, and the total number of residues.

Mol	Chain	Analysed	Rotameric	Outliers	Percentiles	
1	A	560/609 (92%)	525 (94%)	35 (6%)	21	38
2	B	284/283 (100%)	276 (97%)	8 (3%)	49	73
3	G	51/58 (88%)	48 (94%)	3 (6%)	23	41
All	All	895/950 (94%)	849 (95%)	46 (5%)	27	48

5 of 46 residues with a non-rotameric sidechain are listed below:

Mol	Chain	Res	Type
1	A	436	ARG
1	A	528	THR
2	B	266	HIS
1	A	457	ASP
1	A	502	ASP

Some sidechains can be flipped to improve hydrogen bonding and reduce clashes. 5 of 10 such sidechains are listed below:

Mol	Chain	Res	Type
1	A	310	ASN
1	A	633	GLN
2	B	155	ASN
1	A	262	HIS
2	B	110	ASN

4.3.3 RNA [i](#)

There are no RNA molecules in this entry.

4.4 Non-standard residues in protein, DNA, RNA chains [i](#)

There are no non-standard protein/DNA/RNA residues in this entry.

4.5 Carbohydrates [i](#)

There are no carbohydrates in this entry.

4.6 Ligand geometry [i](#)

1 ligand is modelled in this entry.

In the following table, the Counts columns list the number of bonds (or angles) for which Mogul statistics could be retrieved, the number of bonds (or angles) that are observed in the model and the number of bonds (or angles) that are defined in the chemical component dictionary. The Link column lists molecule types, if any, to which the group is linked. The Z score for a bond length (or angle) is the number of standard deviations the observed value is removed from the expected value. A bond length (or angle) with $|Z| > 2$ is considered an outlier worth inspection. RMSZ is the root-mean-square of all Z scores of the bond lengths (or angles).

Mol	Type	Chain	Res	Link	Bond lengths			Bond angles		
					Counts	RMSZ	$\# Z > 2$	Counts	RMSZ	$\# Z > 2$
4	KZQ	A	701	-	28,30,30	1.85	6 (21%)	37,43,43	2.91	14 (37%)

In the following table, the Chirals column lists the number of chiral outliers, the number of chiral centers analysed, the number of these observed in the model and the number defined in the chemical component dictionary. Similar counts are reported in the Torsion and Rings columns. '-' means no outliers of that kind were identified.

Mol	Type	Chain	Res	Link	Chirals	Torsions	Rings
4	KZQ	A	701	-	-	0/12/28/28	0/4/4/4

The worst 5 of 6 bond length outliers are listed below:

Mol	Chain	Res	Type	Atoms	Z	Observed(Å)	Ideal(Å)
4	A	701	KZQ	CAR-CAM	-4.40	1.47	1.51
4	A	701	KZQ	CAF-CAD	-3.96	1.34	1.41
4	A	701	KZQ	NAB-NAC	-3.80	1.30	1.37
4	A	701	KZQ	CAN-NAO	-2.80	1.34	1.38
4	A	701	KZQ	CAU-CAR	-2.22	1.49	1.52

The worst 5 of 14 bond angle outliers are listed below:

Mol	Chain	Res	Type	Atoms	Z	Observed(°)	Ideal(°)
4	A	701	KZQ	CAU-CAR-CAM	-9.17	100.92	112.84
4	A	701	KZQ	CAS-CAN-CAM	-7.41	120.19	127.62
4	A	701	KZQ	OAL-CAK-CAM	-4.38	113.74	121.21
4	A	701	KZQ	CAN-NAO-CAP	-3.92	120.78	123.72
4	A	701	KZQ	CAG-CAF-CAD	-2.89	117.30	120.84

There are no chirality outliers.

There are no torsion outliers.

There are no ring outliers.

1 monomer is involved in 3 short contacts:

Mol	Chain	Res	Type	Clashes	Symm-Clashes
4	A	701	KZQ	3	0

4.7 Other polymers [i](#)

There are no such residues in this entry.

4.8 Polymer linkage issues [i](#)

There are no chain breaks in this entry.

5 Fit of model and data [i](#)

5.1 Protein, DNA and RNA chains [i](#)

In the following table, the column labelled ‘#RSRZ> 2’ contains the number (and percentage) of RSRZ outliers, followed by percent RSRZ outliers for the chain as percentile scores relative to all X-ray entries and entries of similar resolution. The OWAB column contains the minimum, median, 95th percentile and maximum values of the occupancy-weighted average B-factor per residue. The column labelled ‘Q< 0.9’ lists the number of (and percentage) of residues with an average occupancy less than 0.9.

Mol	Chain	Analysed	<RSRZ>	#RSRZ>2	OWAB(Å ²)	Q<0.9
1	A	625/689 (90%)	0.37	63 (10%) 8 6	61, 102, 179, 246	0
2	B	339/340 (99%)	-0.08	4 (1%) 79 78	59, 81, 121, 175	0
3	G	62/71 (87%)	0.38	7 (11%) 6 5	73, 105, 172, 202	0
All	All	1026/1100 (93%)	0.22	74 (7%) 16 14	59, 93, 172, 246	0

The worst 5 of 74 RSRZ outliers are listed below:

Mol	Chain	Res	Type	RSRZ
1	A	394	HIS	7.0
3	G	66	PHE	6.8
2	B	129	ARG	6.2
1	A	474	ARG	5.9
1	A	550	GLU	5.8

5.2 Non-standard residues in protein, DNA, RNA chains [i](#)

There are no non-standard protein/DNA/RNA residues in this entry.

5.3 Carbohydrates [i](#)

There are no carbohydrates in this entry.

5.4 Ligands [i](#)

In the following table, the Atoms column lists the number of modelled atoms in the group and the number defined in the chemical component dictionary. LLDF column lists the quality of electron density of the group with respect to its neighbouring residues in protein, DNA or RNA chains. The B-factors column lists the minimum, median, 95th percentile and maximum values of B factors

of atoms in the group. The column labelled 'Q< 0.9' lists the number of atoms with occupancy less than 0.9.

Mol	Type	Chain	Res	Atoms	RSCC	RSR	LLDF	B-factors(\AA^2)	Q<0.9
4	KZQ	A	701	27/27	0.92	0.16	-0.70	74,101,125,145	0

5.5 Other polymers [i](#)

There are no such residues in this entry.