



# Full wwPDB X-ray Structure Validation Report ⓘ

Feb 14, 2017 – 12:03 am GMT

PDB ID : 4PNW  
Title : E. coli sliding clamp in complex with (R)-6-bromo-9-(2-((S)-1-carboxy-2-phenylethylamino)-2-oxoethyl)-2,3,4,9-tetrahydro-1H-carbazole-2-carboxylic acid  
Authors : Yin, Z.; Oakley, A.J.  
Deposited on : 2014-02-21  
Resolution : 2.00 Å(reported)

This is a Full wwPDB X-ray Structure Validation Report for a publicly released PDB entry.

We welcome your comments at [validation@mail.wwpdb.org](mailto:validation@mail.wwpdb.org)

A user guide is available at

<http://wwpdb.org/validation/2016/XrayValidationReportHelp>

with specific help available everywhere you see the ⓘ symbol.

---

The following versions of software and data (see [references ⓘ](#)) were used in the production of this report:

MolProbity : 4.02b-467  
Mogul : 1.7.2 (RC1), CSD as538be (2017)  
Xtriage (Phenix) : 1.9-1692  
EDS : trunk28620  
Percentile statistics : 20161228.v01 (using entries in the PDB archive December 28th 2016)  
Refmac : 5.8.0135  
CCP4 : 6.5.0  
Ideal geometry (proteins) : Engh & Huber (2001)  
Ideal geometry (DNA, RNA) : Parkinson et al. (1996)  
Validation Pipeline (wwPDB-VP) : recalc28949

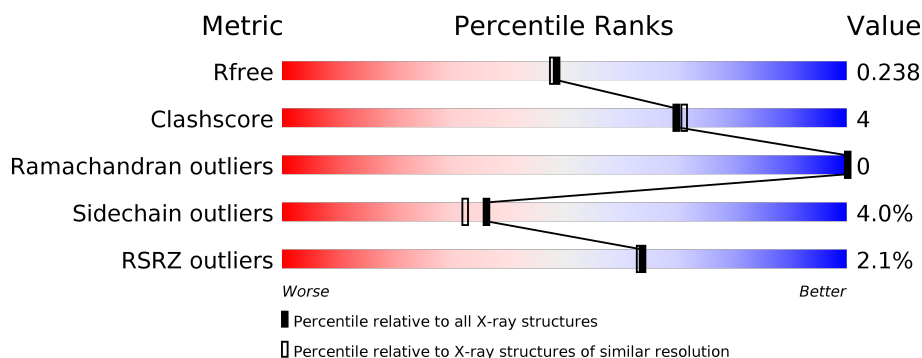
# 1 Overall quality at a glance

The following experimental techniques were used to determine the structure:

## *X-RAY DIFFRACTION*

The reported resolution of this entry is 2.00 Å.

Percentile scores (ranging between 0-100) for global validation metrics of the entry are shown in the following graphic. The table shows the number of entries on which the scores are based.



Metric	Whole archive (#Entries)	Similar resolution (#Entries, resolution range(Å))
$R_{free}$	100719	6609 (2.00-2.00)
Clashscore	112137	7775 (2.00-2.00)
Ramachandran outliers	110173	7679 (2.00-2.00)
Sidechain outliers	110143	7678 (2.00-2.00)
RSRZ outliers	101464	6696 (2.00-2.00)

The table below summarises the geometric issues observed across the polymeric chains and their fit to the electron density. The red, orange, yellow and green segments on the lower bar indicate the fraction of residues that contain outliers for  $\geq 3$ , 2, 1 and 0 types of geometric quality criteria. A grey segment represents the fraction of residues that are not modelled. The numeric value for each fraction is indicated below the corresponding segment, with a dot representing fractions  $\leq 5\%$ . The upper red bar (where present) indicates the fraction of residues that have poor fit to the electron density. The numeric value is given above the bar.

Mol	Chain	Length	Quality of chain
1	A	366	<div> <div style="width: 100%; height: 10px; background: linear-gradient(to right, red 1%, orange 1%, yellow 1%, green 98%);"></div> <div style="display: flex; justify-content: space-between; margin-top: 5px;"> <span>%</span> <span>90%</span> <span>8% ..</span> </div> </div>
1	B	366	<div> <div style="width: 100%; height: 10px; background: linear-gradient(to right, red 3%, orange 1%, yellow 1%, green 95%);"></div> <div style="display: flex; justify-content: space-between; margin-top: 5px;"> <span>3%</span> <span>88%</span> <span>10% ..</span> </div> </div>

The following table lists non-polymeric compounds, carbohydrate monomers and non-standard residues in protein, DNA, RNA chains that are outliers for geometric or electron-density-fit criteria:

Mol	Type	Chain	Res	Chirality	Geometry	Clashes	Electron density
2	2VM	A	401	-	-	-	X
2	2VM	B	402	-	-	-	X
5	PEG	B	405	-	-	-	X
5	PEG	B	407	-	-	X	X

## 2 Entry composition [i](#)

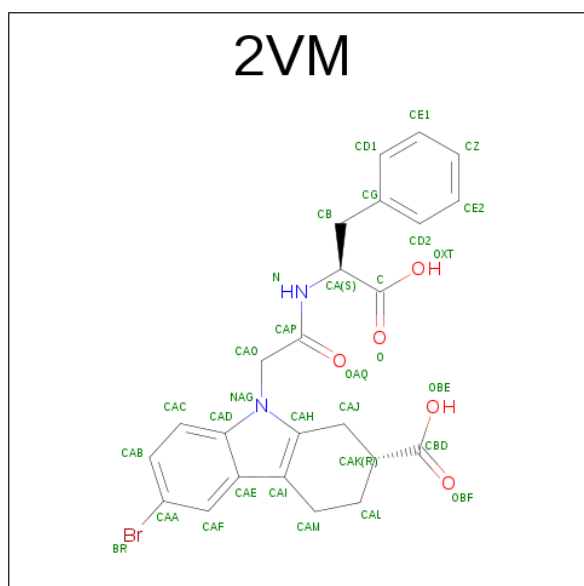
There are 6 unique types of molecules in this entry. The entry contains 6352 atoms, of which 0 are hydrogens and 0 are deuteriums.

In the tables below, the ZeroOcc column contains the number of atoms modelled with zero occupancy, the AltConf column contains the number of residues with at least one atom in alternate conformation and the Trace column contains the number of residues modelled with at most 2 atoms.

- Molecule 1 is a protein called DNA polymerase III subunit beta.

Mol	Chain	Residues	Atoms					ZeroOcc	AltConf	Trace
1	A	364	Total	C	N	O	S	0	7	0
			2827	1786	480	542	19			
1	B	364	Total	C	N	O	S	0	10	0
			2846	1800	489	538	19			

- Molecule 2 is (2R)-6-BROMO-9-(2-[(1S)-1-CARBOXY-2-PHENYLETHYL]AMINO)-2-OXOETHYL)-2,3,4,9-TETRAHYDRO-1H-CARBAZOLE-2-CARBOXYLIC ACID (three-letter code: 2VM) (formula: C<sub>24</sub>H<sub>23</sub>BrN<sub>2</sub>O<sub>5</sub>).



Mol	Chain	Residues	Atoms					ZeroOcc	AltConf
2	A	1	Total	Br	C	N	O	0	0
			21	1	15	2	3		
2	B	1	Total	Br	C	N	O	0	0
			32	1	24	2	5		

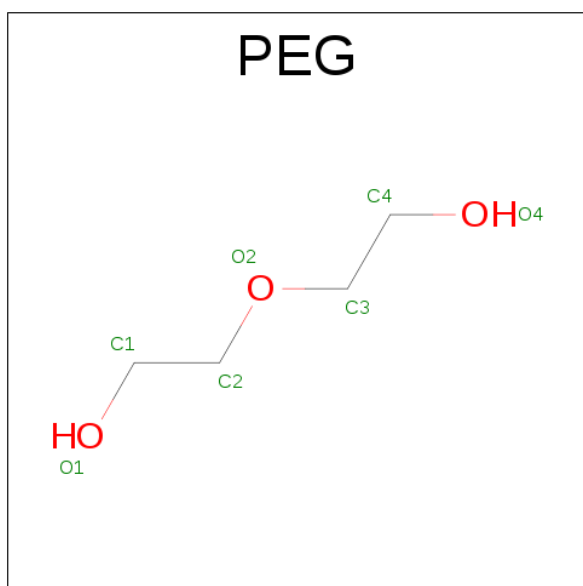
- Molecule 3 is CALCIUM ION (three-letter code: CA) (formula: Ca).

Mol	Chain	Residues	Atoms		ZeroOcc	AltConf
3	B	2	Total	Ca	0	0
			2	2		
3	A	2	Total	Ca	0	0
			2	2		

- Molecule 4 is CHLORIDE ION (three-letter code: CL) (formula: Cl).

Mol	Chain	Residues	Atoms		ZeroOcc	AltConf
4	B	1	Total	Cl	0	0
			1	1		

- Molecule 5 is DI(HYDROXYETHYL)ETHER (three-letter code: PEG) (formula: C<sub>4</sub>H<sub>10</sub>O<sub>3</sub>).



Mol	Chain	Residues	Atoms			ZeroOcc	AltConf
5	B	1	Total	C	O	0	0
			7	4	3		
5	B	1	Total	C	O	0	0
			7	4	3		
5	B	1	Total	C	O	0	0
			7	4	3		

- Molecule 6 is water.

Mol	Chain	Residues	Atoms		ZeroOcc	AltConf
6	A	293	Total	O	0	0
			293	293		

*Continued on next page...*

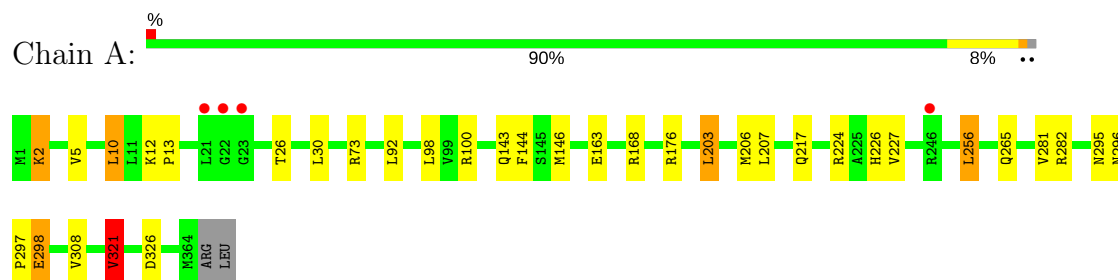
*Continued from previous page...*

Mol	Chain	Residues	Atoms		ZeroOcc	AltConf
6	B	307	Total 307	O 307	0	0

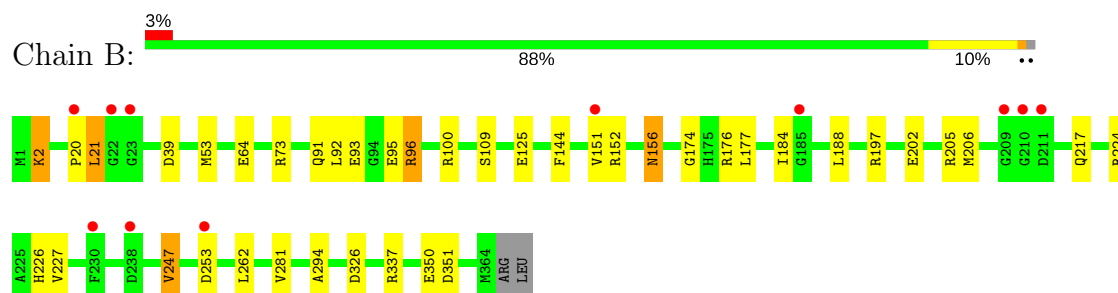
### 3 Residue-property plots [i](#)

These plots are drawn for all protein, RNA and DNA chains in the entry. The first graphic for a chain summarises the proportions of the various outlier classes displayed in the second graphic. The second graphic shows the sequence view annotated by issues in geometry and electron density. Residues are color-coded according to the number of geometric quality criteria for which they contain at least one outlier: green = 0, yellow = 1, orange = 2 and red = 3 or more. A red dot above a residue indicates a poor fit to the electron density ( $RSRZ > 2$ ). Stretches of 2 or more consecutive residues without any outlier are shown as a green connector. Residues present in the sample, but not in the model, are shown in grey.

- Molecule 1: DNA polymerase III subunit beta



- Molecule 1: DNA polymerase III subunit beta



## 4 Data and refinement statistics

Property	Value	Source
Space group	P 1 21 1	Depositor
Cell constants a, b, c, $\alpha$ , $\beta$ , $\gamma$	79.81Å 68.71Å 83.06Å 90.00° 115.72° 90.00°	Depositor
Resolution (Å)	28.01 – 2.00 28.01 – 2.00	Depositor EDS
% Data completeness (in resolution range)	89.5 (28.01-2.00) 89.6 (28.01-2.00)	Depositor EDS
$R_{merge}$	0.05	Depositor
$R_{sym}$	(Not available)	Depositor
$\langle I/\sigma(I) \rangle$ <sup>1</sup>	3.70 (at 1.99Å)	Xtriage
Refinement program	REFMAC 5.7.0029	Depositor
R, $R_{free}$	0.184 , 0.233 0.189 , 0.238	Depositor DCC
$R_{free}$ test set	2511 reflections (5.37%)	DCC
Wilson B-factor (Å <sup>2</sup> )	23.2	Xtriage
Anisotropy	0.149	Xtriage
Bulk solvent $k_{sol}$ (e/Å <sup>3</sup> ), $B_{sol}$ (Å <sup>2</sup> )	0.34 , 46.3	EDS
L-test for twinning <sup>2</sup>	$\langle  L  \rangle = 0.50$ , $\langle L^2 \rangle = 0.34$	Xtriage
Estimated twinning fraction	0.006 for l,-k,h	Xtriage
$F_o, F_c$ correlation	0.95	EDS
Total number of atoms	6352	wwPDB-VP
Average B, all atoms (Å <sup>2</sup> )	25.0	wwPDB-VP

Xtriage's analysis on translational NCS is as follows: *The analyses of the Patterson function reveals a significant off-origin peak that is 31.04 % of the origin peak, indicating pseudo translational symmetry. The chance of finding a peak of this or larger height randomly in a structure without pseudo translational symmetry is equal to 1.1836e-03. The detected translational NCS is most likely also responsible for the elevated intensity ratio.*

<sup>1</sup> Intensities estimated from amplitudes.

<sup>2</sup> Theoretical values of  $\langle |L| \rangle$ ,  $\langle L^2 \rangle$  for acentric reflections are 0.5, 0.333 respectively for untwinned datasets, and 0.375, 0.2 for perfectly twinned datasets.



## 5 Model quality [i](#)

### 5.1 Standard geometry [i](#)

Bond lengths and bond angles in the following residue types are not validated in this section: CA, PEG, 2VM, CL

The Z score for a bond length (or angle) is the number of standard deviations the observed value is removed from the expected value. A bond length (or angle) with  $|Z| > 5$  is considered an outlier worth inspection. RMSZ is the root-mean-square of all Z scores of the bond lengths (or angles).

Mol	Chain	Bond lengths		Bond angles	
		RMSZ	$\# Z  > 5$	RMSZ	$\# Z  > 5$
1	A	0.42	0/2899	0.68	1/3931 (0.0%)
1	B	0.42	0/2928	0.65	0/3970
All	All	0.42	0/5827	0.66	1/7901 (0.0%)

There are no bond length outliers.

All (1) bond angle outliers are listed below:

Mol	Chain	Res	Type	Atoms	Z	Observed(°)	Ideal(°)
1	A	321	VAL	CB-CA-C	-6.68	98.71	111.40

There are no chirality outliers.

There are no planarity outliers.

### 5.2 Too-close contacts [i](#)

In the following table, the Non-H and H(model) columns list the number of non-hydrogen atoms and hydrogen atoms in the chain respectively. The H(added) column lists the number of hydrogen atoms added and optimized by MolProbity. The Clashes column lists the number of clashes within the asymmetric unit, whereas Symm-Clashes lists symmetry related clashes.

Mol	Chain	Non-H	H(model)	H(added)	Clashes	Symm-Clashes
1	A	2827	0	2819	20	0
1	B	2846	0	2842	26	0
2	A	21	0	12	0	0
2	B	32	0	21	1	0
3	A	2	0	0	0	0
3	B	2	0	0	0	0
4	B	1	0	0	1	0
5	B	21	0	30	7	0

*Continued on next page...*

*Continued from previous page...*

Mol	Chain	Non-H	H(model)	H(added)	Clashes	Symm-Clashes
6	A	293	0	0	3	0
6	B	307	0	0	7	0
All	All	6352	0	5724	48	0

The all-atom clashscore is defined as the number of clashes found per 1000 atoms (including hydrogen atoms). The all-atom clashscore for this structure is 4.

All (48) close contacts within the same asymmetric unit are listed below, sorted by their clash magnitude.

Atom-1	Atom-2	Interatomic distance (Å)	Clash overlap (Å)
1:B:156:ASN:HD21	1:B:197:ARG:HE	1.38	0.70
1:A:256:LEU:HD21	1:A:308:VAL:HG21	1.77	0.67
1:A:163:GLU:OE1	1:A:168:ARG:NH2	2.29	0.65
1:B:93:GLU:CG	5:B:407:PEG:O1	2.44	0.64
5:B:407:PEG:H31	6:B:762:HOH:O	1.98	0.63
1:B:2:LYS:HE2	5:B:407:PEG:H41	1.82	0.61
1:B:20:PRO:HD3	1:B:202:GLU:OE1	2.01	0.61
1:B:184:ILE:HD11	1:B:188:LEU:HD11	1.83	0.59
5:B:407:PEG:C3	6:B:762:HOH:O	2.50	0.58
1:B:337:ARG:NH2	1:B:350[B]:GLU:OE2	2.38	0.57
1:A:12:LYS:HB3	1:A:13:PRO:HD3	1.87	0.56
1:A:26:THR:HG22	1:A:30:LEU:HD12	1.87	0.56
1:B:95:GLU:CB	6:B:610:HOH:O	2.54	0.55
1:B:174:GLY:O	2:B:402:2VM:H18	2.07	0.54
1:A:298:GLU:CD	1:A:298:GLU:H	2.11	0.54
1:A:217:GLN:OE1	1:A:226:HIS:HE1	1.91	0.53
1:B:350[B]:GLU:HG2	1:B:351:ASP:O	2.09	0.53
1:B:217:GLN:OE1	1:B:226[A]:HIS:HE1	1.94	0.51
1:B:100:ARG:HH21	5:B:407:PEG:H31	1.75	0.51
1:A:282:ARG:NH2	1:A:295:ASN:HD21	2.10	0.50
1:B:202:GLU:OE1	1:B:205:ARG:NH1	2.45	0.49
1:A:2:LYS:NZ	6:A:715:HOH:O	2.39	0.49
1:B:206:MET:HE3	1:B:227:VAL:HG12	1.95	0.48
1:A:5[A]:VAL:HG21	1:A:10:LEU:HG	1.96	0.48
1:B:281:VAL:HG12	1:B:294:ALA:HB2	1.97	0.47
1:B:151:VAL:HG13	6:B:767:HOH:O	2.15	0.47
1:A:282:ARG:NH1	6:A:652:HOH:O	2.48	0.46
1:A:281:VAL:HG13	1:A:321:VAL:HG22	1.97	0.46
1:B:96:ARG:NH2	1:B:109[A]:SER:OG	2.49	0.46
1:A:143:GLN:HG3	1:A:146:MET:CE	2.46	0.45
1:A:298:GLU:CD	1:A:298:GLU:N	2.70	0.45

*Continued on next page...*

Continued from previous page...

Atom-1	Atom-2	Interatomic distance (Å)	Clash overlap (Å)
1:B:337:ARG:HD3	6:B:769:HOH:O	2.16	0.45
1:A:5[B]:VAL:HG11	1:A:10:LEU:HG	1.99	0.44
1:B:217:GLN:OE1	1:B:224:ARG:NH1	2.43	0.44
1:A:296:ASN:HB2	1:A:297:PRO:CD	2.48	0.43
1:A:144:PHE:CD2	1:A:326:ASP:HB3	2.54	0.43
1:B:144:PHE:CD2	1:B:326:ASP:HB3	2.54	0.43
1:B:91:GLN:HB2	5:B:407:PEG:H32	2.01	0.43
1:B:262:LEU:O	4:B:401:CL:CL	2.75	0.42
1:B:21:LEU:N	1:B:21:LEU:HD22	2.35	0.41
1:B:64[A]:GLU:HG2	6:B:665:HOH:O	2.19	0.41
1:A:203:LEU:O	1:A:206:MET:HG2	2.21	0.41
1:A:224:ARG:NH1	6:A:699:HOH:O	2.32	0.41
1:B:2:LYS:CE	5:B:407:PEG:H41	2.49	0.41
1:A:206:MET:HE2	1:A:227:VAL:HG12	2.02	0.41
1:B:177:LEU:HD13	1:B:247:VAL:HG21	2.03	0.41
1:B:253:ASP:HB3	6:B:668:HOH:O	2.21	0.40

There are no symmetry-related clashes.

## 5.3 Torsion angles [i](#)

### 5.3.1 Protein backbone [i](#)

In the following table, the Percentiles column shows the percent Ramachandran outliers of the chain as a percentile score with respect to all X-ray entries followed by that with respect to entries of similar resolution.

The Analysed column shows the number of residues for which the backbone conformation was analysed, and the total number of residues.

Mol	Chain	Analysed	Favoured	Allowed	Outliers	Percentiles	
1	A	369/366 (101%)	364 (99%)	5 (1%)	0	100	100
1	B	372/366 (102%)	363 (98%)	9 (2%)	0	100	100
All	All	741/732 (101%)	727 (98%)	14 (2%)	0	100	100

There are no Ramachandran outliers to report.

### 5.3.2 Protein sidechains ⓘ

In the following table, the Percentiles column shows the percent sidechain outliers of the chain as a percentile score with respect to all X-ray entries followed by that with respect to entries of similar resolution.

The Analysed column shows the number of residues for which the sidechain conformation was analysed, and the total number of residues.

Mol	Chain	Analysed	Rotameric	Outliers	Percentiles	
1	A	311/313 (99%)	299 (96%)	12 (4%)	37	34
1	B	310/313 (99%)	298 (96%)	12 (4%)	37	34
All	All	621/626 (99%)	597 (96%)	24 (4%)	36	34

All (24) residues with a non-rotameric sidechain are listed below:

Mol	Chain	Res	Type
1	A	2	LYS
1	A	10	LEU
1	A	73	ARG
1	A	92	LEU
1	A	98	LEU
1	A	100	ARG
1	A	176	ARG
1	A	203	LEU
1	A	207	LEU
1	A	256	LEU
1	A	298	GLU
1	A	321	VAL
1	B	2	LYS
1	B	21	LEU
1	B	39	ASP
1	B	53	MET
1	B	73	ARG
1	B	92	LEU
1	B	96	ARG
1	B	125	GLU
1	B	152	ARG
1	B	156	ASN
1	B	176	ARG
1	B	247	VAL

Some sidechains can be flipped to improve hydrogen bonding and reduce clashes. All (11) such sidechains are listed below:

Mol	Chain	Res	Type
1	A	36	GLN
1	A	191	HIS
1	A	212	ASN
1	A	226	HIS
1	A	288	ASN
1	A	295	ASN
1	A	299	GLN
1	B	156	ASN
1	B	186	GLN
1	B	251	ASN
1	B	348	GLN

### 5.3.3 RNA ⓘ

There are no RNA molecules in this entry.

## 5.4 Non-standard residues in protein, DNA, RNA chains ⓘ

There are no non-standard protein/DNA/RNA residues in this entry.

## 5.5 Carbohydrates ⓘ

There are no carbohydrates in this entry.

## 5.6 Ligand geometry ⓘ

Of 10 ligands modelled in this entry, 5 are monoatomic - leaving 5 for Mogul analysis.

In the following table, the Counts columns list the number of bonds (or angles) for which Mogul statistics could be retrieved, the number of bonds (or angles) that are observed in the model and the number of bonds (or angles) that are defined in the chemical component dictionary. The Link column lists molecule types, if any, to which the group is linked. The Z score for a bond length (or angle) is the number of standard deviations the observed value is removed from the expected value. A bond length (or angle) with  $|Z| > 2$  is considered an outlier worth inspection. RMSZ is the root-mean-square of all Z scores of the bond lengths (or angles).

Mol	Type	Chain	Res	Link	Bond lengths			Bond angles		
					Counts	RMSZ	$\# Z  > 2$	Counts	RMSZ	$\# Z  > 2$
2	2VM	A	401	-	17,23,35	3.18	7 (41%)	18,34,50	2.15	4 (22%)
2	2VM	B	402	-	25,35,35	2.08	8 (32%)	26,50,50	1.51	4 (15%)
5	PEG	B	405	-	6,6,6	0.53	0	5,5,5	0.32	0

Mol	Type	Chain	Res	Link	Bond lengths			Bond angles		
					Counts	RMSZ	# Z  > 2	Counts	RMSZ	# Z  > 2
5	PEG	B	406	-	6,6,6	0.49	0	5,5,5	0.29	0
5	PEG	B	407	-	6,6,6	0.61	0	5,5,5	0.64	0

In the following table, the Chirals column lists the number of chiral outliers, the number of chiral centers analysed, the number of these observed in the model and the number defined in the chemical component dictionary. Similar counts are reported in the Torsion and Rings columns. '-' means no outliers of that kind were identified.

Mol	Type	Chain	Res	Link	Chirals	Torsions	Rings
2	2VM	A	401	-	-	0/4/17/29	0/3/3/4
2	2VM	B	402	-	-	0/12/29/29	0/4/4/4
5	PEG	B	405	-	-	0/4/4/4	0/0/0/0
5	PEG	B	406	-	-	0/4/4/4	0/0/0/0
5	PEG	B	407	-	-	0/4/4/4	0/0/0/0

All (15) bond length outliers are listed below:

Mol	Chain	Res	Type	Atoms	Z	Observed(Å)	Ideal(Å)
2	A	401	2VM	CAJ-CAK	-7.11	1.45	1.53
2	A	401	2VM	CAM-CAI	-6.40	1.39	1.51
2	B	402	2VM	CB-CG	-4.51	1.40	1.51
2	A	401	2VM	CAJ-CAH	-4.40	1.40	1.51
2	B	402	2VM	CAM-CAI	-3.99	1.43	1.51
2	A	401	2VM	CAF-CAE	-3.92	1.34	1.42
2	A	401	2VM	CAC-CAD	-3.83	1.33	1.41
2	B	402	2VM	CAF-CAE	-3.72	1.35	1.42
2	A	401	2VM	CAI-CAE	-3.64	1.34	1.41
2	B	402	2VM	CAJ-CAH	-3.58	1.42	1.51
2	B	402	2VM	CAI-CAE	-3.52	1.35	1.41
2	B	402	2VM	CAC-CAD	-3.08	1.34	1.41
2	B	402	2VM	CAJ-CAK	-2.37	1.50	1.53
2	B	402	2VM	CAF-CAA	2.11	1.39	1.36
2	A	401	2VM	CAF-CAA	2.37	1.40	1.36

All (8) bond angle outliers are listed below:

Mol	Chain	Res	Type	Atoms	Z	Observed(°)	Ideal(°)
2	A	401	2VM	CAL-CAM-CAI	-5.82	101.49	112.94
2	B	402	2VM	CAB-CAA-CAF	-4.22	117.80	121.98
2	A	401	2VM	CAB-CAA-CAF	-3.58	118.43	121.98
2	B	402	2VM	CAL-CAM-CAI	-3.49	106.07	112.94
2	A	401	2VM	OAQ-CAP-CAO	-2.27	119.71	121.54

*Continued on next page...*

*Continued from previous page...*

Mol	Chain	Res	Type	Atoms	Z	Observed(°)	Ideal(°)
2	B	402	2VM	CB-CA-N	-2.11	104.73	108.94
2	B	402	2VM	BR-CAA-CAF	3.47	124.40	119.82
2	A	401	2VM	BR-CAA-CAF	4.04	125.14	119.82

There are no chirality outliers.

There are no torsion outliers.

There are no ring outliers.

2 monomers are involved in 8 short contacts:

Mol	Chain	Res	Type	Clashes	Symm-Clashes
2	B	402	2VM	1	0
5	B	407	PEG	7	0

## 5.7 Other polymers [i](#)

There are no such residues in this entry.

## 5.8 Polymer linkage issues [i](#)

There are no chain breaks in this entry.

## 6 Fit of model and data [i](#)

### 6.1 Protein, DNA and RNA chains [i](#)

In the following table, the column labelled ‘#RSRZ > 2’ contains the number (and percentage) of RSRZ outliers, followed by percent RSRZ outliers for the chain as percentile scores relative to all X-ray entries and entries of similar resolution. The OWAB column contains the minimum, median, 95<sup>th</sup> percentile and maximum values of the occupancy-weighted average B-factor per residue. The column labelled ‘Q < 0.9’ lists the number of (and percentage) of residues with an average occupancy less than 0.9.

Mol	Chain	Analysed	<RSRZ>	#RSRZ>2	OWAB(Å <sup>2</sup> )	Q<0.9
1	A	364/366 (99%)	-0.24	4 (1%) 80 80	15, 23, 37, 63	0
1	B	364/366 (99%)	-0.24	11 (3%) 51 51	14, 22, 40, 62	0
All	All	728/732 (99%)	-0.24	15 (2%) 64 63	14, 22, 39, 63	0

All (15) RSRZ outliers are listed below:

Mol	Chain	Res	Type	RSRZ
1	B	22	GLY	5.1
1	B	20	PRO	4.1
1	B	238	ASP	3.9
1	B	209	GLY	3.8
1	A	22	GLY	3.2
1	B	185	GLY	3.2
1	A	23	GLY	3.1
1	B	211	ASP	2.9
1	A	21	LEU	2.9
1	B	23	GLY	2.8
1	B	151	VAL	2.8
1	B	253	ASP	2.6
1	B	210	GLY	2.5
1	B	230[A]	PHE	2.1
1	A	246	ARG	2.1

### 6.2 Non-standard residues in protein, DNA, RNA chains [i](#)

There are no non-standard protein/DNA/RNA residues in this entry.

### 6.3 Carbohydrates [i](#)

There are no carbohydrates in this entry.



## 6.4 Ligands [i](#)

In the following table, the Atoms column lists the number of modelled atoms in the group and the number defined in the chemical component dictionary. LLDF column lists the quality of electron density of the group with respect to its neighbouring residues in protein, DNA or RNA chains. The B-factors column lists the minimum, median, 95<sup>th</sup> percentile and maximum values of B factors of atoms in the group. The column labelled 'Q< 0.9' lists the number of atoms with occupancy less than 0.9.

Mol	Type	Chain	Res	Atoms	RSCC	RSR	LLDF	B-factors(Å <sup>2</sup> )	Q<0.9
2	2VM	A	401	21/32	0.93	0.25	7.59	22,29,31,32	21
2	2VM	B	402	32/32	0.96	0.19	4.02	30,38,45,46	0
5	PEG	B	407	7/7	0.72	0.25	3.58	32,34,38,38	0
5	PEG	B	405	7/7	0.72	0.23	2.43	43,45,45,46	0
4	CL	B	401	1/1	0.96	0.13	1.08	37,37,37,37	0
3	CA	B	404	1/1	0.93	0.11	0.42	49,49,49,49	0
5	PEG	B	406	7/7	0.88	0.12	0.24	42,43,45,46	0
3	CA	A	403	1/1	0.96	0.06	-1.25	48,48,48,48	0
3	CA	B	403	1/1	1.00	0.03	-5.95	22,22,22,22	0
3	CA	A	402	1/1	1.00	0.03	-15.91	21,21,21,21	0

## 6.5 Other polymers [i](#)

There are no such residues in this entry.