



Full wwPDB X-ray Structure Validation Report ⓘ

Feb 13, 2017 – 01:04 am GMT

PDB ID : 1PPM
Title : CRYSTALLOGRAPHIC ANALYSIS OF TRANSITION-STATE MIMICS
BOUND TO PENICILLOPEPSIN: PHOSPHORUS-CONTAINING PEP-
TIDE ANALOGUES
Authors : Fraser, M.E.; James, M.N.G.
Deposited on : 1992-06-01
Resolution : 1.70 Å(reported)

This is a Full wwPDB X-ray Structure Validation Report for a publicly released PDB entry.

We welcome your comments at validation@mail.wwpdb.org

A user guide is available at

<http://wwpdb.org/validation/2016/XrayValidationReportHelp>

with specific help available everywhere you see the ⓘ symbol.

The following versions of software and data (see [references ⓘ](#)) were used in the production of this report:

MolProbity : 4.02b-467
Mogul : 1.7.2 (RC1), CSD as538be (2017)
Xtriage (Phenix) : **NOT EXECUTED**
EDS : **NOT EXECUTED**
Percentile statistics : 20161228.v01 (using entries in the PDB archive December 28th 2016)
Ideal geometry (proteins) : Engh & Huber (2001)
Ideal geometry (DNA, RNA) : Parkinson et al. (1996)
Validation Pipeline (wwPDB-VP) : recalc28949

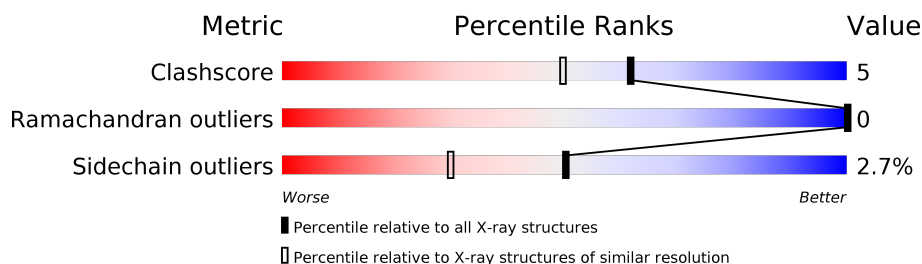
1 Overall quality at a glance

The following experimental techniques were used to determine the structure:

X-RAY DIFFRACTION

The reported resolution of this entry is 1.70 Å.

Percentile scores (ranging between 0-100) for global validation metrics of the entry are shown in the following graphic. The table shows the number of entries on which the scores are based.



Metric	Whole archive (#Entries)	Similar resolution (#Entries, resolution range(Å))
Clashscore	112137	3876 (1.70-1.70)
Ramachandran outliers	110173	3815 (1.70-1.70)
Sidechain outliers	110143	3815 (1.70-1.70)

The table below summarises the geometric issues observed across the polymeric chains and their fit to the electron density. The red, orange, yellow and green segments on the lower bar indicate the fraction of residues that contain outliers for ≥ 3 , 2, 1 and 0 types of geometric quality criteria. A grey segment represents the fraction of residues that are not modelled. The numeric value for each fraction is indicated below the corresponding segment, with a dot representing fractions $\leq 5\%$. The upper red bar (where present) indicates the fraction of residues that have poor fit to the electron density. The numeric value is given above the bar.

Note EDS was not executed.

Mol	Chain	Length	Quality of chain
1	E	323	

The following table lists non-polymeric compounds, carbohydrate monomers and non-standard residues in protein, DNA, RNA chains that are outliers for geometric or electron-density-fit criteria:

Mol	Type	Chain	Res	Chirality	Geometry	Clashes	Electron density
5	SO4	E	331	-	-	X	-

2 Entry composition [i](#)

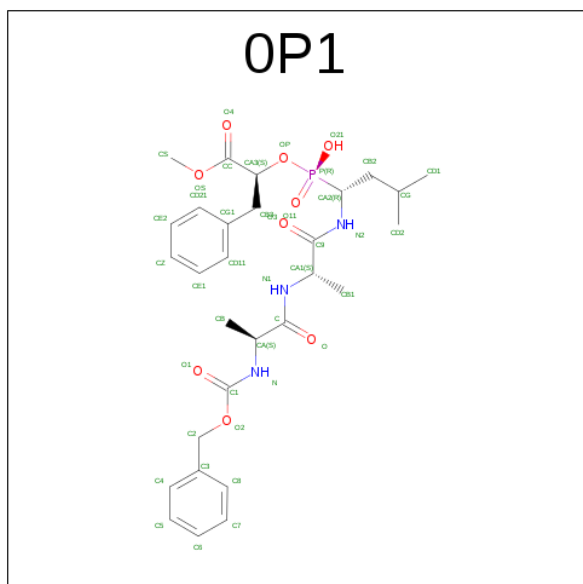
There are 6 unique types of molecules in this entry. The entry contains 2739 atoms, of which 0 are hydrogens and 0 are deuteriums.

In the tables below, the ZeroOcc column contains the number of atoms modelled with zero occupancy, the AltConf column contains the number of residues with at least one atom in alternate conformation and the Trace column contains the number of residues modelled with at most 2 atoms.

- Molecule 1 is a protein called PENICILLOPEPSIN.

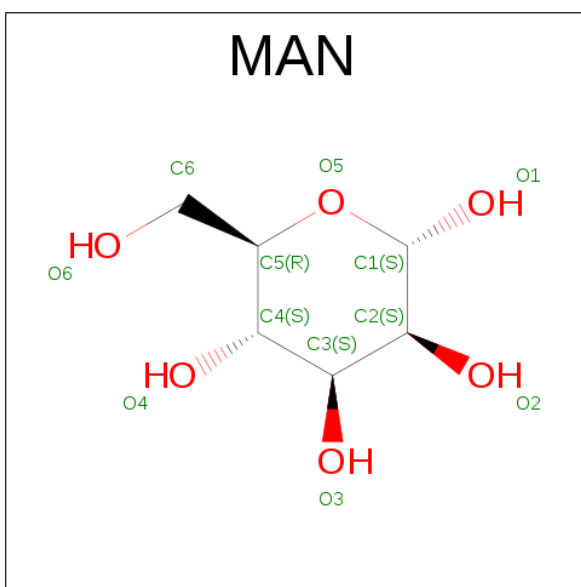
Mol	Chain	Residues	Atoms					ZeroOcc	AltConf	Trace
			Total	C	N	O	S			
1	E	323	2366	1479	377	508	2	0	0	0

- Molecule 2 is N-[(BENZYLOXY)CARBONYL]-L-ALANYL-N-[(1S)-1-[(R)-[(1R)-1-BENZYL-2-METHOXY-2-OXOETHOXY](HYDROXY)PHOSPHORYL]-3-METHYLBUTYL]-L-ALANINAMIDE (three-letter code: 0P1) (formula: C₂₉H₄₀N₃O₉P).



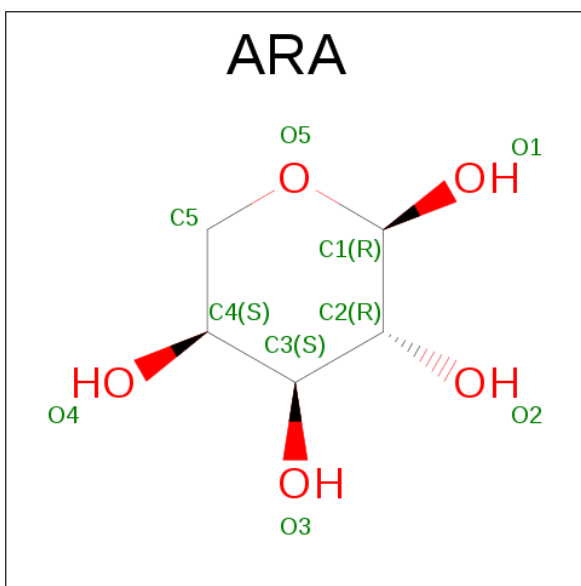
Mol	Chain	Residues	Atoms					ZeroOcc	AltConf
			Total	C	N	O	P		
2	E	1	42	29	3	9	1	0	0

- Molecule 3 is SUGAR (ALPHA-D-MANNOSE) (three-letter code: MAN) (formula: C₆H₁₂O₆).



Mol	Chain	Residues	Atoms			ZeroOcc	AltConf
3	E	1	Total	C	O	0	0
			11	6	5		

- Molecule 4 is SUGAR (ALPHA-L-ARABINOSE) (three-letter code: ARA) (formula: C₅H₁₀O₅).



Mol	Chain	Residues	Atoms			ZeroOcc	AltConf
4	E	1	Total	C	O	0	0
			9	5	4		

- Molecule 5 is SULFATE ION (three-letter code: SO4) (formula: O₄S).



Mol	Chain	Residues	Atoms			ZeroOcc	AltConf
5	E	1	Total	O	S	0	0
			5	4	1		

- Molecule 6 is water.

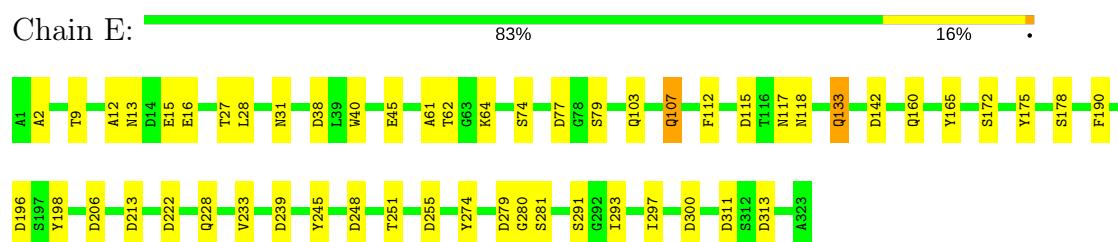
Mol	Chain	Residues	Atoms		ZeroOcc	AltConf
6	E	306	Total	O	0	0
			306	306		

3 Residue-property plots [i](#)

These plots are drawn for all protein, RNA and DNA chains in the entry. The first graphic for a chain summarises the proportions of the various outlier classes displayed in the second graphic. The second graphic shows the sequence view annotated by issues in geometry and electron density. Residues are color-coded according to the number of geometric quality criteria for which they contain at least one outlier: green = 0, yellow = 1, orange = 2 and red = 3 or more. A red dot above a residue indicates a poor fit to the electron density ($RSRZ > 2$). Stretches of 2 or more consecutive residues without any outlier are shown as a green connector. Residues present in the sample, but not in the model, are shown in grey.

Note EDS was not executed.

• Molecule 1: PENICILLOPEPSIN



4 Data and refinement statistics

Xtriage (Phenix) and EDS were not executed - this section is therefore incomplete.

Property	Value	Source
Space group	C 1 2 1	Depositor
Cell constants a, b, c, α , β , γ	97.40Å 46.59Å 66.29Å 90.00° 115.70° 90.00°	Depositor
Resolution (Å)	(Not available) – 1.70	Depositor
% Data completeness (in resolution range)	(Not available) ((Not available)-1.70)	Depositor
R_{merge}	(Not available)	Depositor
R_{sym}	(Not available)	Depositor
Refinement program	PROLSQ, X-PLOR	Depositor
R, R_{free}	0.150 , (Not available)	Depositor
Estimated twinning fraction	No twinning to report.	Xtriage
Total number of atoms	2739	wwPDB-VP
Average B, all atoms (Å ²)	15.0	wwPDB-VP

5 Model quality [i](#)

5.1 Standard geometry [i](#)

Bond lengths and bond angles in the following residue types are not validated in this section: ARA, OP1, SO4, MAN

The Z score for a bond length (or angle) is the number of standard deviations the observed value is removed from the expected value. A bond length (or angle) with $|Z| > 5$ is considered an outlier worth inspection. RMSZ is the root-mean-square of all Z scores of the bond lengths (or angles).

Mol	Chain	Bond lengths		Bond angles	
		RMSZ	$\# Z > 5$	RMSZ	$\# Z > 5$
1	E	1.08	1/2420 (0.0%)	1.71	31/3304 (0.9%)

All (1) bond length outliers are listed below:

Mol	Chain	Res	Type	Atoms	Z	Observed(Å)	Ideal(Å)
1	E	45	GLU	CD-OE1	-5.89	1.19	1.25

All (31) bond angle outliers are listed below:

Mol	Chain	Res	Type	Atoms	Z	Observed(°)	Ideal(°)
1	E	248	ASP	CB-CG-OD2	10.85	128.07	118.30
1	E	142	ASP	CB-CG-OD1	10.81	128.03	118.30
1	E	222	ASP	CB-CG-OD2	-9.50	109.75	118.30
1	E	222	ASP	CB-CG-OD1	9.42	126.77	118.30
1	E	313	ASP	CB-CG-OD2	-9.36	109.88	118.30
1	E	165	TYR	CB-CG-CD2	-8.42	115.95	121.00
1	E	281	SER	N-CA-CB	-7.89	98.66	110.50
1	E	313	ASP	CB-CG-OD1	7.61	125.15	118.30
1	E	196	ASP	CB-CG-OD1	-7.53	111.52	118.30
1	E	160	GLN	CG-CD-NE2	7.25	134.11	116.70
1	E	61	ALA	N-CA-CB	-6.68	100.74	110.10
1	E	311	ASP	CB-CG-OD2	-6.66	112.30	118.30
1	E	2	ALA	CB-CA-C	6.46	119.80	110.10
1	E	245	TYR	CB-CG-CD2	-6.42	117.15	121.00
1	E	165	TYR	CB-CG-CD1	6.35	124.81	121.00
1	E	311	ASP	CB-CG-OD1	6.14	123.83	118.30
1	E	280	GLY	C-N-CA	5.97	136.62	121.70
1	E	213	ASP	CB-CG-OD1	5.87	123.58	118.30
1	E	190	PHE	CB-CG-CD2	-5.86	116.70	120.80
1	E	117	ASN	OD1-CG-ND2	5.84	135.32	121.90

Continued on next page...

Continued from previous page...

Mol	Chain	Res	Type	Atoms	Z	Observed(°)	Ideal(°)
1	E	15	GLU	OE1-CD-OE2	5.77	130.22	123.30
1	E	300	ASP	CB-CG-OD2	5.61	123.35	118.30
1	E	13	ASN	OD1-CG-ND2	5.52	134.60	121.90
1	E	206	ASP	CB-CA-C	5.50	121.40	110.40
1	E	274	TYR	CB-CG-CD2	5.44	124.26	121.00
1	E	16	GLU	OE1-CD-OE2	-5.43	116.78	123.30
1	E	115	ASP	CB-CG-OD1	5.39	123.15	118.30
1	E	62	THR	N-CA-CB	-5.18	100.46	110.30
1	E	255	ASP	CB-CG-OD2	5.15	122.94	118.30
1	E	15	GLU	CG-CD-OE2	-5.09	108.11	118.30
1	E	172	SER	CA-CB-OG	-5.07	97.51	111.20

There are no chirality outliers.

There are no planarity outliers.

5.2 Too-close contacts ⓘ

In the following table, the Non-H and H(model) columns list the number of non-hydrogen atoms and hydrogen atoms in the chain respectively. The H(added) column lists the number of hydrogen atoms added and optimized by MolProbity. The Clashes column lists the number of clashes within the asymmetric unit, whereas Symm-Clashes lists symmetry related clashes.

Mol	Chain	Non-H	H(model)	H(added)	Clashes	Symm-Clashes
1	E	2366	0	2181	16	0
2	E	42	0	39	9	0
3	E	11	0	10	0	0
4	E	9	0	7	0	0
5	E	5	0	0	2	0
6	E	306	0	0	3	0
All	All	2739	0	2237	24	0

The all-atom clashscore is defined as the number of clashes found per 1000 atoms (including hydrogen atoms). The all-atom clashscore for this structure is 5.

All (24) close contacts within the same asymmetric unit are listed below, sorted by their clash magnitude.

Atom-1	Atom-2	Interatomic distance (Å)	Clash overlap (Å)
2:E:324:0P1:CD21	2:E:324:0P1:HD2	0.97	1.12
2:E:324:0P1:HD1	2:E:324:0P1:CD11	0.97	1.08
2:E:324:0P1:CE2	2:E:324:0P1:CG1	2.37	0.99

Continued on next page...

Continued from previous page...

Atom-1	Atom-2	Interatomic distance (Å)	Clash overlap (Å)
2:E:324:0P1:CE1	2:E:324:0P1:CG1	2.44	0.91
2:E:324:0P1:HD1	2:E:324:0P1:CE1	2.04	0.88
2:E:324:0P1:CG1	2:E:324:0P1:HD2	2.04	0.87
2:E:324:0P1:CE2	2:E:324:0P1:HD2	2.04	0.87
2:E:324:0P1:HD1	2:E:324:0P1:CG1	2.07	0.85
1:E:293:ILE:HD11	1:E:297:ILE:HD11	1.65	0.76
1:E:239:ASP:OD1	1:E:279:ASP:OD2	2.24	0.55
1:E:175:TYR:OH	5:E:331:SO4:O4	2.12	0.54
1:E:107:GLN:NE2	6:E:420:HOH:O	2.41	0.53
1:E:233:VAL:HG13	1:E:251:THR:HG21	1.89	0.53
1:E:133:GLN:HA	1:E:133:GLN:HE21	1.78	0.48
1:E:12:ALA:HB3	6:E:451:HOH:O	2.14	0.46
1:E:9:THR:O	1:E:9:THR:HG23	2.18	0.45
1:E:291:SER:HB3	6:E:538:HOH:O	2.17	0.44
1:E:40:TRP:HA	1:E:103:GLN:O	2.18	0.44
1:E:198:TYR:OH	1:E:228:GLN:NE2	2.37	0.42
1:E:79:SER:HB2	1:E:112:PHE:CE1	2.54	0.42
1:E:178:SER:HA	5:E:331:SO4:O2	2.19	0.42
1:E:28:LEU:N	1:E:28:LEU:HD12	2.35	0.42
1:E:27:THR:C	1:E:28:LEU:HD12	2.40	0.42
1:E:77:ASP:HB3	2:E:324:0P1:HB21	2.02	0.40

There are no symmetry-related clashes.

5.3 Torsion angles [i](#)

5.3.1 Protein backbone [i](#)

In the following table, the Percentiles column shows the percent Ramachandran outliers of the chain as a percentile score with respect to all X-ray entries followed by that with respect to entries of similar resolution.

The Analysed column shows the number of residues for which the backbone conformation was analysed, and the total number of residues.

Mol	Chain	Analysed	Favoured	Allowed	Outliers	Percentiles	
1	E	321/323 (99%)	319 (99%)	2 (1%)	0	100	100

There are no Ramachandran outliers to report.

5.3.2 Protein sidechains [i](#)

In the following table, the Percentiles column shows the percent sidechain outliers of the chain as a percentile score with respect to all X-ray entries followed by that with respect to entries of similar resolution.

The Analysed column shows the number of residues for which the sidechain conformation was analysed, and the total number of residues.

Mol	Chain	Analysed	Rotameric	Outliers	Percentiles
1	E	259/259 (100%)	252 (97%)	7 (3%)	50 30

All (7) residues with a non-rotameric sidechain are listed below:

Mol	Chain	Res	Type
1	E	31	ASN
1	E	38	ASP
1	E	64	LYS
1	E	74	SER
1	E	107	GLN
1	E	118	ASN
1	E	133	GLN

Some sidechains can be flipped to improve hydrogen bonding and reduce clashes. All (5) such sidechains are listed below:

Mol	Chain	Res	Type
1	E	31	ASN
1	E	107	GLN
1	E	133	GLN
1	E	228	GLN
1	E	252	ASN

5.3.3 RNA [i](#)

There are no RNA molecules in this entry.

5.4 Non-standard residues in protein, DNA, RNA chains [i](#)

There are no non-standard protein/DNA/RNA residues in this entry.

5.5 Carbohydrates [i](#)

There are no carbohydrates in this entry.

5.6 Ligand geometry [i](#)

4 ligands are modelled in this entry.

In the following table, the Counts columns list the number of bonds (or angles) for which Mogul statistics could be retrieved, the number of bonds (or angles) that are observed in the model and the number of bonds (or angles) that are defined in the chemical component dictionary. The Link column lists molecule types, if any, to which the group is linked. The Z score for a bond length (or angle) is the number of standard deviations the observed value is removed from the expected value. A bond length (or angle) with $|Z| > 2$ is considered an outlier worth inspection. RMSZ is the root-mean-square of all Z scores of the bond lengths (or angles).

Mol	Type	Chain	Res	Link	Bond lengths			Bond angles		
					Counts	RMSZ	# $ Z > 2$	Counts	RMSZ	# $ Z > 2$
2	OP1	E	324	-	41,43,43	1.74	9 (21%)	50,58,58	2.20	16 (32%)
3	MAN	E	329	1	11,11,12	1.17	1 (9%)	13,15,17	1.94	6 (46%)
4	ARA	E	330	1	9,9,10	1.20	1 (11%)	10,12,14	5.06	7 (70%)
5	SO4	E	331	-	4,4,4	0.68	0	6,6,6	0.56	0

In the following table, the Chirals column lists the number of chiral outliers, the number of chiral centers analysed, the number of these observed in the model and the number defined in the chemical component dictionary. Similar counts are reported in the Torsion and Rings columns. '-' means no outliers of that kind were identified.

Mol	Type	Chain	Res	Link	Chirals	Torsions	Rings
2	OP1	E	324	-	-	0/49/50/50	0/2/2/2
3	MAN	E	329	1	-	0/2/19/22	0/1/1/1
4	ARA	E	330	1	-	0/0/14/17	0/1/1/1
5	SO4	E	331	-	-	0/0/0/0	0/0/0/0

All (11) bond length outliers are listed below:

Mol	Chain	Res	Type	Atoms	Z	Observed(Å)	Ideal(Å)
2	E	324	OP1	P-O21	-5.76	1.42	1.56
2	E	324	OP1	OS-CS	-3.84	1.36	1.45
2	E	324	OP1	P-O11	-3.61	1.42	1.50
4	E	330	ARA	C2-C3	-2.32	1.49	1.52
2	E	324	OP1	CA2-N2	-2.14	1.43	1.46
3	E	329	MAN	C2-C3	-2.12	1.49	1.52
2	E	324	OP1	C1-N	-2.02	1.29	1.34

Continued on next page...

Continued from previous page...

Mol	Chain	Res	Type	Atoms	Z	Observed(Å)	Ideal(Å)
2	E	324	OP1	OS-CC	2.40	1.39	1.33
2	E	324	OP1	O-C	2.62	1.28	1.23
2	E	324	OP1	O1-C1	2.65	1.26	1.21
2	E	324	OP1	O2-C1	3.44	1.41	1.35

All (29) bond angle outliers are listed below:

Mol	Chain	Res	Type	Atoms	Z	Observed(°)	Ideal(°)
2	E	324	OP1	OP-P-O11	-5.26	106.20	115.08
2	E	324	OP1	OS-CC-O4	-4.68	114.41	123.82
2	E	324	OP1	CB-CA-N	-3.86	103.06	110.34
2	E	324	OP1	O2-C1-O1	-3.80	116.58	124.22
3	E	329	MAN	O2-C2-C1	-3.13	102.80	109.18
2	E	324	OP1	O11-P-CA2	-2.88	108.60	114.04
3	E	329	MAN	C3-C4-C5	-2.85	105.20	110.22
3	E	329	MAN	O4-C4-C3	-2.70	104.49	110.36
2	E	324	OP1	CB3-CG1-CD11	-2.60	115.66	120.91
2	E	324	OP1	C9-CA1-N1	-2.56	105.28	111.65
3	E	329	MAN	O6-C6-C5	-2.34	103.46	111.34
2	E	324	OP1	OP-P-CA2	-2.31	97.70	104.56
3	E	329	MAN	C1-C2-C3	-2.12	106.97	109.65
2	E	324	OP1	CZ-CE1-CD11	-2.07	117.36	120.21
2	E	324	OP1	CB3-CA3-CC	-2.02	106.60	110.69
2	E	324	OP1	CB3-CG1-CD21	2.06	125.06	120.91
4	E	330	ARA	O2-C2-C1	2.18	113.61	109.18
2	E	324	OP1	CB1-CA1-C9	2.84	115.61	110.15
3	E	329	MAN	O5-C1-C2	2.91	115.36	110.79
2	E	324	OP1	C8-C3-C4	3.01	122.94	118.16
4	E	330	ARA	C4-C3-C2	3.04	114.39	110.86
4	E	330	ARA	O4-C4-C5	4.36	118.04	109.18
4	E	330	ARA	O2-C2-C3	4.59	119.19	110.17
2	E	324	OP1	CS-OS-CC	4.64	126.84	115.97
2	E	324	OP1	O2-C1-N	4.80	120.86	110.54
2	E	324	OP1	OS-CC-CA3	5.24	122.91	111.00
4	E	330	ARA	C5-C4-C3	5.73	116.91	109.65
4	E	330	ARA	C5-O5-C1	8.40	124.44	111.61
4	E	330	ARA	C1-C2-C3	9.73	121.98	109.65

There are no chirality outliers.

There are no torsion outliers.

There are no ring outliers.

2 monomers are involved in 11 short contacts:

Mol	Chain	Res	Type	Clashes	Symm-Clashes
2	E	324	OP1	9	0
5	E	331	SO4	2	0

5.7 Other polymers [i](#)

There are no such residues in this entry.

5.8 Polymer linkage issues [i](#)

There are no chain breaks in this entry.

6 Fit of model and data

6.1 Protein, DNA and RNA chains

EDS was not executed - this section is therefore empty.

6.2 Non-standard residues in protein, DNA, RNA chains

EDS was not executed - this section is therefore empty.

6.3 Carbohydrates

EDS was not executed - this section is therefore empty.

6.4 Ligands

EDS was not executed - this section is therefore empty.

6.5 Other polymers

EDS was not executed - this section is therefore empty.