



# wwPDB X-ray Structure Validation Summary Report ⓘ

Oct 1, 2017 – 08:20 AM EDT

PDB ID : 1PVG  
Title : Crystal Structure of the ATPase region of *Saccharomyces Cerevisiae* topoisomerase II  
Authors : Classen, S.; Olland, S.; Berger, J.M.  
Deposited on : unknown  
Resolution : 1.80 Å(reported)

This is a wwPDB X-ray Structure Validation Summary Report for a publicly released PDB entry.

We welcome your comments at [validation@mail.wwpdb.org](mailto:validation@mail.wwpdb.org)

A user guide is available at

<http://wwpdb.org/validation/2016/XrayValidationReportHelp>

with specific help available everywhere you see the ⓘ symbol.

---

The following versions of software and data (see [references ⓘ](#)) were used in the production of this report:

MolProbity : 4.02b-467  
Mogul : 1.7.2 (RC1), CSD as538be (2017)  
Xtriage (Phenix) : 1.9-1692  
EDS : rb-20030345  
Percentile statistics : 20161228.v01 (using entries in the PDB archive December 28th 2016)  
Refmac : 5.8.0135  
CCP4 : 6.5.0  
Ideal geometry (proteins) : Engh & Huber (2001)  
Ideal geometry (DNA, RNA) : Parkinson et al. (1996)  
Validation Pipeline (wwPDB-VP) : rb-20030345

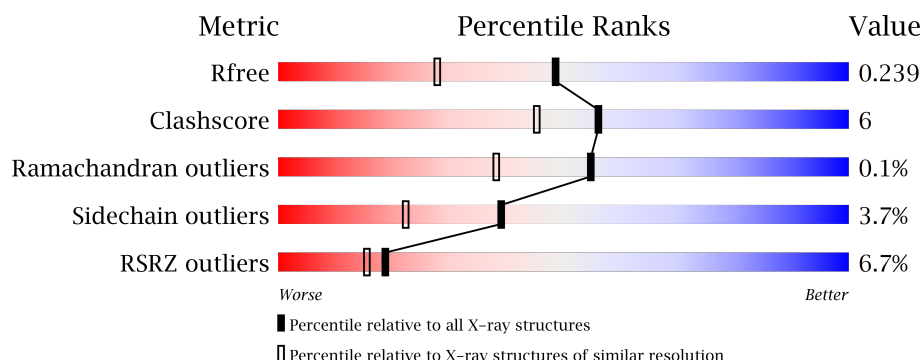
# 1 Overall quality at a glance

The following experimental techniques were used to determine the structure:

*X-RAY DIFFRACTION*

The reported resolution of this entry is 1.80 Å.

Percentile scores (ranging between 0-100) for global validation metrics of the entry are shown in the following graphic. The table shows the number of entries on which the scores are based.



Metric	Whole archive (#Entries)	Similar resolution (#Entries, resolution range(Å))
$R_{free}$	100719	4827 (1.80-1.80)
Clashscore	112137	5742 (1.80-1.80)
Ramachandran outliers	110173	5676 (1.80-1.80)
Sidechain outliers	110143	5675 (1.80-1.80)
RSRZ outliers	101464	4906 (1.80-1.80)

The table below summarises the geometric issues observed across the polymeric chains and their fit to the electron density. The red, orange, yellow and green segments on the lower bar indicate the fraction of residues that contain outliers for  $\geq 3$ , 2, 1 and 0 types of geometric quality criteria. A grey segment represents the fraction of residues that are not modelled. The numeric value for each fraction is indicated below the corresponding segment, with a dot representing fractions  $\leq 5\%$ . The upper red bar (where present) indicates the fraction of residues that have poor fit to the electron density. The numeric value is given above the bar.

Mol	Chain	Length	Quality of chain
1	A	418	<div> <div>4%</div> <div> <div></div> <div>77%</div> <div>12%</div> <div>• 10%</div> </div> </div>
1	B	418	<div> <div>7%</div> <div> <div></div> <div>76%</div> <div>14%</div> <div>• 10%</div> </div> </div>

## 2 Entry composition

There are 4 unique types of molecules in this entry. The entry contains 6892 atoms, of which 0 are hydrogens and 0 are deuteriums.

In the tables below, the ZeroOcc column contains the number of atoms modelled with zero occupancy, the AltConf column contains the number of residues with at least one atom in alternate conformation and the Trace column contains the number of residues modelled with at most 2 atoms.

- Molecule 1 is a protein called DNA topoisomerase II.

Mol	Chain	Residues	Atoms						ZeroOcc	AltConf	Trace
1	A	378	Total	C	N	O	S	Se	0	0	0
			3038	1937	514	572	5	10			
1	B	378	Total	C	N	O	S	Se	0	0	0
			3045	1943	514	573	5	10			

There are 30 discrepancies between the modelled and reference sequences:

Chain	Residue	Modelled	Actual	Comment	Reference
A	-4	GLY	GLY	CLONING ARTIFACT	UNP P06786
A	-3	HIS	HIS	CLONING ARTIFACT	UNP P06786
A	-2	MET	MET	CLONING ARTIFACT	UNP P06786
A	-1	VAL	VAL	CLONING ARTIFACT	UNP P06786
A	0	THR	THR	CLONING ARTIFACT	UNP P06786
A	49	MSE	MET	MODIFIED RESIDUE	UNP P06786
A	81	MSE	MET	MODIFIED RESIDUE	UNP P06786
A	119	MSE	MET	MODIFIED RESIDUE	UNP P06786
A	177	MSE	MET	MODIFIED RESIDUE	UNP P06786
A	208	MSE	MET	MODIFIED RESIDUE	UNP P06786
A	219	MSE	MET	MODIFIED RESIDUE	UNP P06786
A	312	MSE	MET	MODIFIED RESIDUE	UNP P06786
A	349	MSE	MET	MODIFIED RESIDUE	UNP P06786
A	392	MSE	MET	MODIFIED RESIDUE	UNP P06786
A	400	MSE	MET	MODIFIED RESIDUE	UNP P06786
B	-4	GLY	GLY	CLONING ARTIFACT	UNP P06786
B	-3	HIS	HIS	CLONING ARTIFACT	UNP P06786
B	-2	MET	MET	CLONING ARTIFACT	UNP P06786
B	-1	VAL	VAL	CLONING ARTIFACT	UNP P06786
B	0	THR	THR	CLONING ARTIFACT	UNP P06786
B	49	MSE	MET	MODIFIED RESIDUE	UNP P06786
B	81	MSE	MET	MODIFIED RESIDUE	UNP P06786
B	119	MSE	MET	MODIFIED RESIDUE	UNP P06786
B	177	MSE	MET	MODIFIED RESIDUE	UNP P06786
B	208	MSE	MET	MODIFIED RESIDUE	UNP P06786

*Continued on next page...*

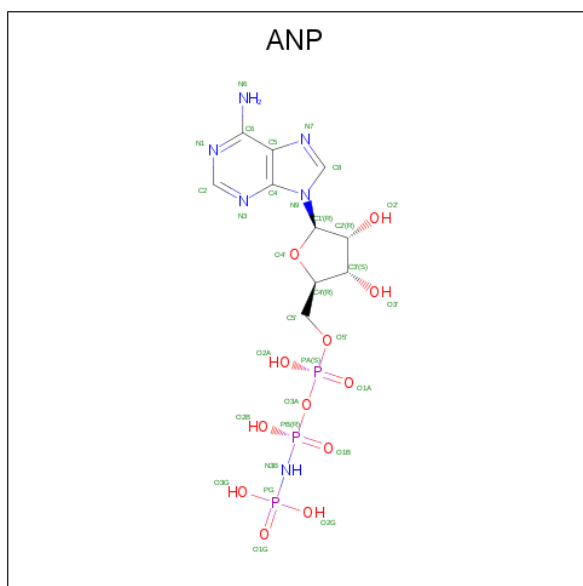
Continued from previous page...

Chain	Residue	Modelled	Actual	Comment	Reference
B	219	MSE	MET	MODIFIED RESIDUE	UNP P06786
B	312	MSE	MET	MODIFIED RESIDUE	UNP P06786
B	349	MSE	MET	MODIFIED RESIDUE	UNP P06786
B	392	MSE	MET	MODIFIED RESIDUE	UNP P06786
B	400	MSE	MET	MODIFIED RESIDUE	UNP P06786

- Molecule 2 is MAGNESIUM ION (three-letter code: MG) (formula: Mg).

Mol	Chain	Residues	Atoms	ZeroOcc	AltConf
2	B	1	Total Mg 1 1	0	0
2	A	1	Total Mg 1 1	0	0

- Molecule 3 is PHOSPHOAMINOPHOSPHONIC ACID-ADENYLATE ESTER (three-letter code: ANP) (formula: C<sub>10</sub>H<sub>17</sub>N<sub>6</sub>O<sub>12</sub>P<sub>3</sub>).



Mol	Chain	Residues	Atoms	ZeroOcc	AltConf
3	A	1	Total C N O P 31 10 6 12 3	0	0
3	B	1	Total C N O P 31 10 6 12 3	0	0

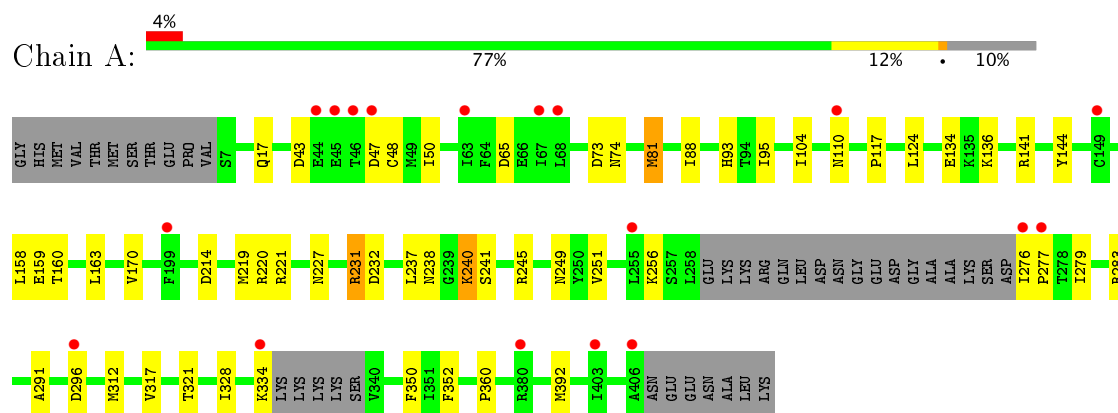
- Molecule 4 is water.

Mol	Chain	Residues	Atoms		ZeroOcc	AltConf
4	A	399	Total 399	O 399	0	0
4	B	346	Total 346	O 346	0	0

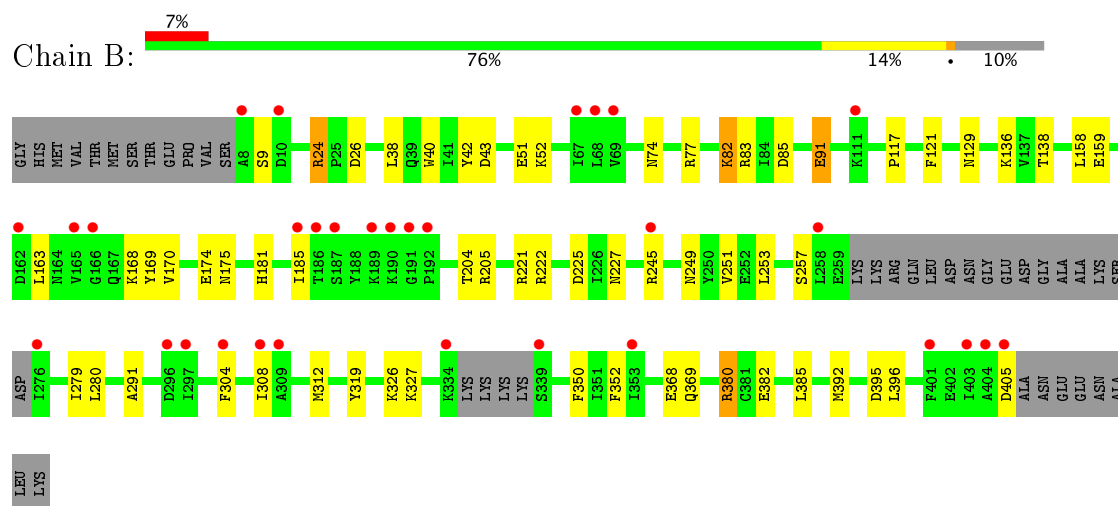
### 3 Residue-property plots [i](#)

These plots are drawn for all protein, RNA and DNA chains in the entry. The first graphic for a chain summarises the proportions of the various outlier classes displayed in the second graphic. The second graphic shows the sequence view annotated by issues in geometry and electron density. Residues are color-coded according to the number of geometric quality criteria for which they contain at least one outlier: green = 0, yellow = 1, orange = 2 and red = 3 or more. A red dot above a residue indicates a poor fit to the electron density ( $RSRZ > 2$ ). Stretches of 2 or more consecutive residues without any outlier are shown as a green connector. Residues present in the sample, but not in the model, are shown in grey.

#### • Molecule 1: DNA topoisomerase II



#### • Molecule 1: DNA topoisomerase II



## 4 Data and refinement statistics

Property	Value	Source
Space group	P 21 21 21	Depositor
Cell constants a, b, c, $\alpha$ , $\beta$ , $\gamma$	58.46 Å 71.08 Å 216.13 Å 90.00° 90.00° 90.00°	Depositor
Resolution (Å)	29.75 – 1.80 29.24 – 1.80	Depositor EDS
% Data completeness (in resolution range)	89.7 (29.75-1.80) 89.6 (29.24-1.80)	Depositor EDS
$R_{merge}$	0.06	Depositor
$R_{sym}$	0.06	Depositor
$\langle I/\sigma(I) \rangle$ <sup>1</sup>	3.17 (at 1.80 Å)	Xtriage
Refinement program	REFMAC 5.1.24	Depositor
R, $R_{free}$	0.206 , 0.241 0.206 , 0.239	Depositor DCC
$R_{free}$ test set	6385 reflections (9.21%)	DCC
Wilson B-factor (Å <sup>2</sup> )	25.5	Xtriage
Anisotropy	0.462	Xtriage
Bulk solvent $k_{sol}$ (e/Å <sup>3</sup> ), $B_{sol}$ (Å <sup>2</sup> )	0.36 , 69.4	EDS
L-test for twinning <sup>2</sup>	$\langle  L  \rangle = 0.49$ , $\langle L^2 \rangle = 0.32$	Xtriage
Estimated twinning fraction	No twinning to report.	Xtriage
$F_o, F_c$ correlation	0.95	EDS
Total number of atoms	6892	wwPDB-VP
Average B, all atoms (Å <sup>2</sup> )	23.0	wwPDB-VP

Xtriage's analysis on translational NCS is as follows: *The largest off-origin peak in the Patterson function is 4.79% of the height of the origin peak. No significant pseudotranslation is detected.*

<sup>1</sup>Intensities estimated from amplitudes.

<sup>2</sup>Theoretical values of  $\langle |L| \rangle$ ,  $\langle L^2 \rangle$  for acentric reflections are 0.5, 0.333 respectively for untwinned datasets, and 0.375, 0.2 for perfectly twinned datasets.

## 5 Model quality

### 5.1 Standard geometry

Bond lengths and bond angles in the following residue types are not validated in this section: MG, ANP

The Z score for a bond length (or angle) is the number of standard deviations the observed value is removed from the expected value. A bond length (or angle) with  $|Z| > 5$  is considered an outlier worth inspection. RMSZ is the root-mean-square of all Z scores of the bond lengths (or angles).

Mol	Chain	Bond lengths		Bond angles	
		RMSZ	$\# Z  > 5$	RMSZ	$\# Z  > 5$
1	A	0.42	0/3083	0.66	5/4144 (0.1%)
1	B	0.40	0/3090	0.64	5/4153 (0.1%)
All	All	0.41	0/6173	0.65	10/8297 (0.1%)

There are no bond length outliers.

The worst 5 of 10 bond angle outliers are listed below:

Mol	Chain	Res	Type	Atoms	Z	Observed(°)	Ideal(°)
1	A	65	ASP	CB-CG-OD2	5.51	123.26	118.30
1	A	296	ASP	CB-CG-OD2	5.32	123.08	118.30
1	B	405	ASP	CB-CG-OD2	5.30	123.07	118.30
1	B	43	ASP	CB-CG-OD2	5.24	123.01	118.30
1	A	73	ASP	CB-CG-OD2	5.22	123.00	118.30

There are no chirality outliers.

There are no planarity outliers.

### 5.2 Too-close contacts

In the following table, the Non-H and H(model) columns list the number of non-hydrogen atoms and hydrogen atoms in the chain respectively. The H(added) column lists the number of hydrogen atoms added and optimized by MolProbity. The Clashes column lists the number of clashes within the asymmetric unit, whereas Symm-Clashes lists symmetry related clashes.

Mol	Chain	Non-H	H(model)	H(added)	Clashes	Symm-Clashes
1	A	3038	0	3037	39	0
1	B	3045	0	3046	34	0
2	A	1	0	0	0	0
2	B	1	0	0	0	0

*Continued on next page...*



*Continued from previous page...*

Mol	Chain	Non-H	H(model)	H(added)	Clashes	Symm-Clashes
3	A	31	0	13	0	0
3	B	31	0	13	0	0
4	A	399	0	0	0	0
4	B	346	0	0	2	0
All	All	6892	0	6109	71	0

The all-atom clashscore is defined as the number of clashes found per 1000 atoms (including hydrogen atoms). The all-atom clashscore for this structure is 6.

The worst 5 of 71 close contacts within the same asymmetric unit are listed below, sorted by their clash magnitude.

Atom-1	Atom-2	Interatomic distance (Å)	Clash overlap (Å)
1:B:392:MSE:HE2	1:B:392:MSE:HA	1.56	0.88
1:B:74:ASN:HD21	1:B:77:ARG:HH11	1.23	0.85
1:A:74:ASN:HB3	1:A:81:MSE:HE1	1.60	0.84
1:B:245:ARG:HB2	1:B:249:ASN:ND2	1.97	0.79
1:A:245:ARG:H	1:A:249:ASN:HD22	1.31	0.78

There are no symmetry-related clashes.

## 5.3 Torsion angles

### 5.3.1 Protein backbone

In the following table, the Percentiles column shows the percent Ramachandran outliers of the chain as a percentile score with respect to all X-ray entries followed by that with respect to entries of similar resolution.

The Analysed column shows the number of residues for which the backbone conformation was analysed, and the total number of residues.

Mol	Chain	Analysed	Favoured	Allowed	Outliers	Percentiles	
1	A	372/418 (89%)	365 (98%)	6 (2%)	1 (0%)	44	29
1	B	372/418 (89%)	361 (97%)	11 (3%)	0	100	100
All	All	744/836 (89%)	726 (98%)	17 (2%)	1 (0%)	55	38

All (1) Ramachandran outliers are listed below:

Mol	Chain	Res	Type
1	A	93	HIS

### 5.3.2 Protein sidechains ⓘ

In the following table, the Percentiles column shows the percent sidechain outliers of the chain as a percentile score with respect to all X-ray entries followed by that with respect to entries of similar resolution.

The Analysed column shows the number of residues for which the sidechain conformation was analysed, and the total number of residues.

Mol	Chain	Analysed	Rotameric	Outliers	Percentiles	
1	A	339/371 (91%)	329 (97%)	10 (3%)	48	32
1	B	340/371 (92%)	325 (96%)	15 (4%)	33	16
All	All	679/742 (92%)	654 (96%)	25 (4%)	39	22

5 of 25 residues with a non-rotameric sidechain are listed below:

Mol	Chain	Res	Type
1	B	52	LYS
1	B	83	ARG
1	B	380	ARG
1	B	82	LYS
1	B	91	GLU

Some sidechains can be flipped to improve hydrogen bonding and reduce clashes. 5 of 12 such sidechains are listed below:

Mol	Chain	Res	Type
1	B	74	ASN
1	B	113	ASN
1	B	176	ASN
1	A	344	GLN
1	B	175	ASN

### 5.3.3 RNA ⓘ

There are no RNA molecules in this entry.

## 5.4 Non-standard residues in protein, DNA, RNA chains ⓘ

There are no non-standard protein/DNA/RNA residues in this entry.

## 5.5 Carbohydrates ⓘ

There are no carbohydrates in this entry.

## 5.6 Ligand geometry ⓘ

Of 4 ligands modelled in this entry, 2 are monoatomic - leaving 2 for Mogul analysis.

In the following table, the Counts columns list the number of bonds (or angles) for which Mogul statistics could be retrieved, the number of bonds (or angles) that are observed in the model and the number of bonds (or angles) that are defined in the Chemical Component Dictionary. The Link column lists molecule types, if any, to which the group is linked. The Z score for a bond length (or angle) is the number of standard deviations the observed value is removed from the expected value. A bond length (or angle) with  $|Z| > 2$  is considered an outlier worth inspection. RMSZ is the root-mean-square of all Z scores of the bond lengths (or angles).

Mol	Type	Chain	Res	Link	Bond lengths			Bond angles		
					Counts	RMSZ	$\# Z  > 2$	Counts	RMSZ	$\# Z  > 2$
3	ANP	A	901	2	29,33,33	1.84	6 (20%)	28,52,52	1.77	4 (14%)
3	ANP	B	902	2	29,33,33	1.96	7 (24%)	28,52,52	1.66	3 (10%)

In the following table, the Chirals column lists the number of chiral outliers, the number of chiral centers analysed, the number of these observed in the model and the number defined in the Chemical Component Dictionary. Similar counts are reported in the Torsion and Rings columns. '-' means no outliers of that kind were identified.

Mol	Type	Chain	Res	Link	Chirals	Torsions	Rings
3	ANP	A	901	2	-	1/13/38/38	0/3/3/3
3	ANP	B	902	2	-	1/13/38/38	0/3/3/3

The worst 5 of 13 bond length outliers are listed below:

Mol	Chain	Res	Type	Atoms	Z	Observed(Å)	Ideal(Å)
3	B	902	ANP	PB-O3A	-5.11	1.52	1.59
3	A	901	ANP	PB-O3A	-4.27	1.53	1.59
3	B	902	ANP	PG-O3G	-2.59	1.49	1.56
3	B	902	ANP	PB-O2B	-2.39	1.50	1.56
3	A	901	ANP	PB-O2B	-2.29	1.50	1.56

The worst 5 of 7 bond angle outliers are listed below:

Mol	Chain	Res	Type	Atoms	Z	Observed( $^{\circ}$ )	Ideal( $^{\circ}$ )
3	A	901	ANP	N3-C2-N1	-6.56	123.15	128.86
3	B	902	ANP	N3-C2-N1	-6.56	123.15	128.86
3	B	902	ANP	C4-C5-N7	-2.33	107.16	109.41
3	A	901	ANP	O3G-PG-O1G	-2.16	107.93	113.41
3	A	901	ANP	C4-C5-N7	-2.10	107.39	109.41

There are no chirality outliers.

All (2) torsion outliers are listed below:

Mol	Chain	Res	Type	Atoms
3	B	902	ANP	O1G-PG-N3B-PB
3	A	901	ANP	O1G-PG-N3B-PB

There are no ring outliers.

No monomer is involved in short contacts.

## 5.7 Other polymers [i](#)

There are no such residues in this entry.

## 5.8 Polymer linkage issues [i](#)

There are no chain breaks in this entry.

## 6 Fit of model and data [i](#)

### 6.1 Protein, DNA and RNA chains [i](#)

In the following table, the column labelled ‘#RSRZ> 2’ contains the number (and percentage) of RSRZ outliers, followed by percent RSRZ outliers for the chain as percentile scores relative to all X-ray entries and entries of similar resolution. The OWAB column contains the minimum, median, 95<sup>th</sup> percentile and maximum values of the occupancy-weighted average B-factor per residue. The column labelled ‘Q< 0.9’ lists the number of (and percentage) of residues with an average occupancy less than 0.9.

Mol	Chain	Analysed	<RSRZ>	#RSRZ>2	OWAB(Å <sup>2</sup> )	Q<0.9
1	A	368/418 (88%)	0.15	18 (4%) 30 25	12, 17, 27, 39	0
1	B	368/418 (88%)	0.33	31 (8%) 12 10	11, 19, 26, 40	0
All	All	736/836 (88%)	0.24	49 (6%) 19 15	11, 18, 26, 40	0

The worst 5 of 49 RSRZ outliers are listed below:

Mol	Chain	Res	Type	RSRZ
1	B	191	GLY	6.0
1	A	276	ILE	5.6
1	B	404	ALA	5.3
1	B	165	VAL	5.1
1	B	8	ALA	5.0

### 6.2 Non-standard residues in protein, DNA, RNA chains [i](#)

There are no non-standard protein/DNA/RNA residues in this entry.

### 6.3 Carbohydrates [i](#)

There are no carbohydrates in this entry.

### 6.4 Ligands [i](#)

In the following table, the Atoms column lists the number of modelled atoms in the group and the number defined in the chemical component dictionary. LLDF column lists the quality of electron density of the group with respect to its neighbouring residues in protein, DNA or RNA chains. The B-factors column lists the minimum, median, 95<sup>th</sup> percentile and maximum values of B factors of atoms in the group. The column labelled ‘Q< 0.9’ lists the number of atoms with occupancy less than 0.9.

Mol	Type	Chain	Res	Atoms	RSCC	RSR	LLDF	B-factors( $\text{\AA}^2$ )	Q<0.9
2	MG	A	903	1/1	0.99	0.15	0.23	22,22,22,22	0
3	ANP	B	902	31/31	0.97	0.12	0.13	21,26,32,33	0
3	ANP	A	901	31/31	0.98	0.12	0.08	19,22,24,27	0
2	MG	B	904	1/1	0.99	0.11	-1.00	23,23,23,23	0

## 6.5 Other polymers [i](#)

There are no such residues in this entry.