



wwPDB X-ray Structure Validation Summary Report ⓘ

Feb 14, 2017 – 09:49 am GMT

PDB ID : 4PY8
Title : Crystal structure of Fab 3.1 in complex with the 1918 influenza virus hemagglutinin
Authors : Dreyfus, C.
Deposited on : 2014-03-26
Resolution : 2.91 Å(reported)

This is a wwPDB X-ray Structure Validation Summary Report for a publicly released PDB entry.

We welcome your comments at validation@mail.wwpdb.org

A user guide is available at

<http://wwpdb.org/validation/2016/XrayValidationReportHelp>

with specific help available everywhere you see the ⓘ symbol.

The following versions of software and data (see [references ⓘ](#)) were used in the production of this report:

MolProbity : 4.02b-467
Mogul : 1.7.2 (RC1), CSD as538be (2017)
Xtriage (Phenix) : 1.9-1692
EDS : trunk28620
Percentile statistics : 20161228.v01 (using entries in the PDB archive December 28th 2016)
Refmac : 5.8.0135
CCP4 : 6.5.0
Ideal geometry (proteins) : Engh & Huber (2001)
Ideal geometry (DNA, RNA) : Parkinson et al. (1996)
Validation Pipeline (wwPDB-VP) : recalc28949

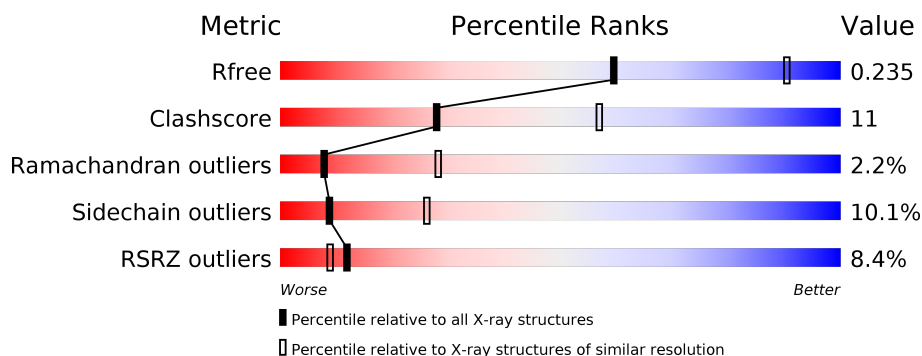
1 Overall quality at a glance

The following experimental techniques were used to determine the structure:

X-RAY DIFFRACTION

The reported resolution of this entry is 2.91 Å.

Percentile scores (ranging between 0-100) for global validation metrics of the entry are shown in the following graphic. The table shows the number of entries on which the scores are based.



Metric	Whole archive (#Entries)	Similar resolution (#Entries, resolution range(Å))
R_{free}	100719	1813 (2.94-2.90)
Clashscore	112137	2045 (2.94-2.90)
Ramachandran outliers	110173	1997 (2.94-2.90)
Sidechain outliers	110143	1999 (2.94-2.90)
RSRZ outliers	101464	1825 (2.94-2.90)

The table below summarises the geometric issues observed across the polymeric chains and their fit to the electron density. The red, orange, yellow and green segments on the lower bar indicate the fraction of residues that contain outliers for ≥ 3 , 2, 1 and 0 types of geometric quality criteria. A grey segment represents the fraction of residues that are not modelled. The numeric value for each fraction is indicated below the corresponding segment, with a dot representing fractions $\leq 5\%$. The upper red bar (where present) indicates the fraction of residues that have poor fit to the electron density. The numeric value is given above the bar.

Mol	Chain	Length	Quality of chain
1	A	331	<div> <div>2%</div> <div>73%</div> <div>25%</div> <div>..</div> </div>
2	B	179	<div> <div>12%</div> <div>84%</div> <div>7%</div> <div>...</div> </div>
3	I	219	<div> <div>13%</div> <div>64%</div> <div>29%</div> <div>6%</div> <div>.</div> </div>
4	J	214	<div> <div>9%</div> <div>66%</div> <div>29%</div> <div>..</div> </div>

The following table lists non-polymeric compounds, carbohydrate monomers and non-standard residues in protein, DNA, RNA chains that are outliers for geometric or electron-density-fit crite-

ria:

Mol	Type	Chain	Res	Chirality	Geometry	Clashes	Electron density
7	MLI	I	301	-	-	-	X

2 Entry composition

There are 7 unique types of molecules in this entry. The entry contains 7222 atoms, of which 0 are hydrogens and 0 are deuteriums.

In the tables below, the ZeroOcc column contains the number of atoms modelled with zero occupancy, the AltConf column contains the number of residues with at least one atom in alternate conformation and the Trace column contains the number of residues modelled with at most 2 atoms.

- Molecule 1 is a protein called Hemagglutinin HA1 chain.

Mol	Chain	Residues	Atoms					ZeroOcc	AltConf	Trace
1	A	328	Total	C	N	O	S	0	0	0
			2528	1595	433	489	11			

There are 4 discrepancies between the modelled and reference sequences:

Chain	Residue	Modelled	Actual	Comment	Reference
A	7	ALA	-	EXPRESSION TAG	UNP Q9WFX3
A	8	ASP	-	EXPRESSION TAG	UNP Q9WFX3
A	9	PRO	-	EXPRESSION TAG	UNP Q9WFX3
A	10	GLY	-	EXPRESSION TAG	UNP Q9WFX3

- Molecule 2 is a protein called Hemagglutinin HA2 chain.

Mol	Chain	Residues	Atoms					ZeroOcc	AltConf	Trace
2	B	171	Total	C	N	O	S	0	1	0
			1376	857	237	276	6			

There are 3 discrepancies between the modelled and reference sequences:

Chain	Residue	Modelled	Actual	Comment	Reference
B	177	SER	-	EXPRESSION TAG	UNP Q9WFX3
B	178	GLY	-	EXPRESSION TAG	UNP Q9WFX3
B	179	ARG	-	EXPRESSION TAG	UNP Q9WFX3

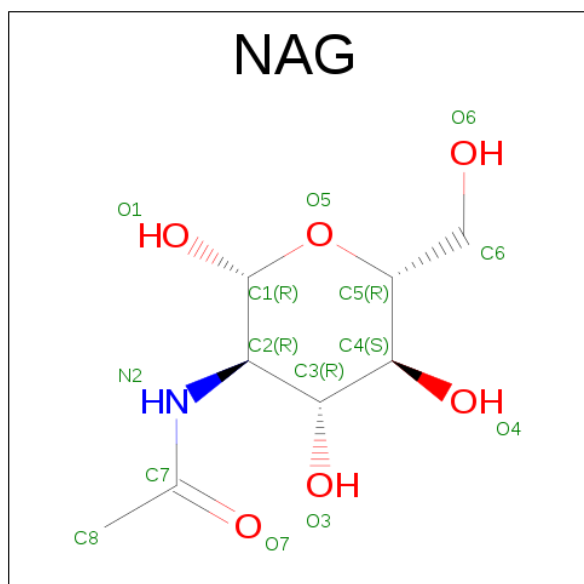
- Molecule 3 is a protein called antibody 3.1 heavy chain.

Mol	Chain	Residues	Atoms					ZeroOcc	AltConf	Trace
3	I	219	Total	C	N	O	S	0	0	0
			1644	1038	281	317	8			

- Molecule 4 is a protein called antibody 3.1 light chain.

Mol	Chain	Residues	Atoms					ZeroOcc	AltConf	Trace
4	J	212	Total	C	N	O	S	0	0	0
			1604	1005	270	324	5			

- Molecule 5 is SUGAR (N-ACETYL-D-GLUCOSAMINE) (three-letter code: NAG) (formula: $C_8H_{15}NO_6$).

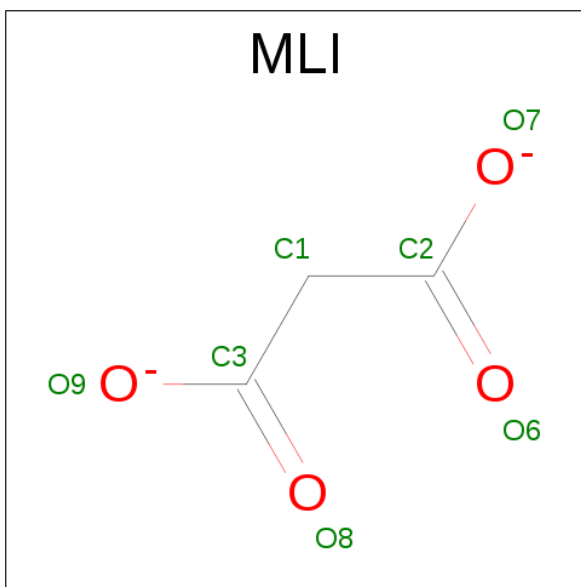


Mol	Chain	Residues	Atoms				ZeroOcc	AltConf
5	A	1	Total	C	N	O	0	0
			14	8	1	5		
5	A	1	Total	C	N	O	0	0
			14	8	1	5		

- Molecule 6 is a polymer of unknown type called SUGAR (2-MER).

Mol	Chain	Residues	Atoms				ZeroOcc	AltConf
6	A	2	Total	C	N	O	0	0
			28	16	2	10		

- Molecule 7 is MALONATE ION (three-letter code: MLI) (formula: $C_3H_2O_4$).

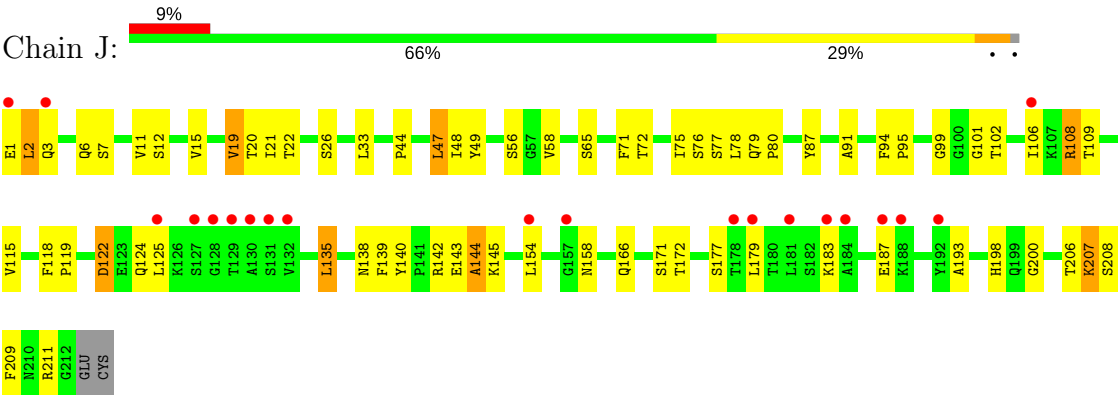


Mol	Chain	Residues	Atoms			ZeroOcc	AltConf
7	I	1	Total	C	O	0	0
			7	3	4		
7	J	1	Total	C	O	0	0
			7	3	4		

- Molecule 1: Hemagglutinin HA1 chain



● Molecule 4: antibody 3.1 light chain



4 Data and refinement statistics

Property	Value	Source
Space group	H 3	Depositor
Cell constants a, b, c, α , β , γ	135.06Å 135.06Å 230.20Å 90.00° 90.00° 120.00°	Depositor
Resolution (Å)	42.84 – 2.91 42.84 – 2.91	Depositor EDS
% Data completeness (in resolution range)	99.6 (42.84-2.91) 99.6 (42.84-2.91)	Depositor EDS
R_{merge}	(Not available)	Depositor
R_{sym}	(Not available)	Depositor
$\langle I/\sigma(I) \rangle$ ¹	2.74 (at 2.90Å)	Xtriage
Refinement program	REFMAC 5.5.0109	Depositor
R, R_{free}	0.193 , 0.242 0.188 , 0.235	Depositor DCC
R_{free} test set	1728 reflections (5.32%)	DCC
Wilson B-factor (Å ²)	80.6	Xtriage
Anisotropy	0.049	Xtriage
Bulk solvent k_{sol} (e/Å ³), B_{sol} (Å ²)	0.33 , 54.3	EDS
L-test for twinning ²	$\langle L \rangle = 0.49$, $\langle L^2 \rangle = 0.32$	Xtriage
Estimated twinning fraction	0.025 for h,-h-k,-l	Xtriage
F_o, F_c correlation	0.95	EDS
Total number of atoms	7222	wwPDB-VP
Average B, all atoms (Å ²)	90.0	wwPDB-VP

Xtriage's analysis on translational NCS is as follows: *The largest off-origin peak in the Patterson function is 3.15% of the height of the origin peak. No significant pseudotranslation is detected.*

¹Intensities estimated from amplitudes.

²Theoretical values of $\langle |L| \rangle$, $\langle L^2 \rangle$ for acentric reflections are 0.5, 0.333 respectively for untwinned datasets, and 0.375, 0.2 for perfectly twinned datasets.

5 Model quality [i](#)

5.1 Standard geometry [i](#)

Bond lengths and bond angles in the following residue types are not validated in this section: MLI, NAG

The Z score for a bond length (or angle) is the number of standard deviations the observed value is removed from the expected value. A bond length (or angle) with $|Z| > 5$ is considered an outlier worth inspection. RMSZ is the root-mean-square of all Z scores of the bond lengths (or angles).

Mol	Chain	Bond lengths		Bond angles	
		RMSZ	$\# Z > 5$	RMSZ	$\# Z > 5$
1	A	0.60	0/2593	0.72	0/3536
2	B	0.60	0/1404	0.68	0/1889
3	I	0.55	0/1684	0.73	0/2298
4	J	0.56	0/1639	0.70	0/2227
All	All	0.58	0/7320	0.71	0/9950

There are no bond length outliers.

There are no bond angle outliers.

There are no chirality outliers.

There are no planarity outliers.

5.2 Too-close contacts [i](#)

In the following table, the Non-H and H(model) columns list the number of non-hydrogen atoms and hydrogen atoms in the chain respectively. The H(added) column lists the number of hydrogen atoms added and optimized by MolProbity. The Clashes column lists the number of clashes within the asymmetric unit, whereas Symm-Clashes lists symmetry related clashes.

Mol	Chain	Non-H	H(model)	H(added)	Clashes	Symm-Clashes
1	A	2528	0	2433	62	0
2	B	1376	0	1284	17	0
3	I	1644	0	1592	50	0
4	J	1604	0	1558	38	0
5	A	28	0	26	0	0
6	A	28	0	25	2	0
7	I	7	0	2	0	0
7	J	7	0	2	1	0
All	All	7222	0	6922	158	0

The all-atom clashscore is defined as the number of clashes found per 1000 atoms (including hydrogen atoms). The all-atom clashscore for this structure is 11.

The worst 5 of 158 close contacts within the same asymmetric unit are listed below, sorted by their clash magnitude.

Atom-1	Atom-2	Interatomic distance (Å)	Clash overlap (Å)
3:I:153:GLU:HB3	3:I:154:PRO:HD3	1.20	1.14
1:A:117:SER:HA	1:A:273:SER:HB2	1.36	1.02
1:A:141:GLY:HA2	1:A:142:VAL:HB	1.39	0.99
3:I:153:GLU:HB3	3:I:154:PRO:CD	1.96	0.95
3:I:54:ASP:OD2	3:I:56:SER:HB2	1.66	0.94

There are no symmetry-related clashes.

5.3 Torsion angles [i](#)

5.3.1 Protein backbone [i](#)

In the following table, the Percentiles column shows the percent Ramachandran outliers of the chain as a percentile score with respect to all X-ray entries followed by that with respect to entries of similar resolution.

The Analysed column shows the number of residues for which the backbone conformation was analysed, and the total number of residues.

Mol	Chain	Analysed	Favoured	Allowed	Outliers	Percentiles	
1	A	326/331 (98%)	293 (90%)	29 (9%)	4 (1%)	15	44
2	B	168/179 (94%)	158 (94%)	7 (4%)	3 (2%)	10	33
3	I	217/219 (99%)	184 (85%)	23 (11%)	10 (5%)	3	10
4	J	210/214 (98%)	193 (92%)	14 (7%)	3 (1%)	13	40
All	All	921/943 (98%)	828 (90%)	73 (8%)	20 (2%)	8	28

5 of 20 Ramachandran outliers are listed below:

Mol	Chain	Res	Type
2	B	61	THR
3	I	58	LYS
3	I	152	PRO
3	I	153	GLU
1	A	140	LYS

5.3.2 Protein sidechains ⓘ

In the following table, the Percentiles column shows the percent sidechain outliers of the chain as a percentile score with respect to all X-ray entries followed by that with respect to entries of similar resolution.

The Analysed column shows the number of residues for which the sidechain conformation was analysed, and the total number of residues.

Mol	Chain	Analysed	Rotameric	Outliers	Percentiles	
1	A	278/285 (98%)	259 (93%)	19 (7%)	18	46
2	B	145/152 (95%)	138 (95%)	7 (5%)	30	63
3	I	179/184 (97%)	151 (84%)	28 (16%)	3	9
4	J	181/185 (98%)	156 (86%)	25 (14%)	4	12
All	All	783/806 (97%)	704 (90%)	79 (10%)	9	26

5 of 79 residues with a non-rotameric sidechain are listed below:

Mol	Chain	Res	Type
3	I	78	THR
3	I	157	VAL
4	J	142	ARG
3	I	84	ASN
3	I	119	THR

Some sidechains can be flipped to improve hydrogen bonding and reduce clashes. 5 of 20 such sidechains are listed below:

Mol	Chain	Res	Type
3	I	176	GLN
3	I	197	GLN
4	J	138	ASN
3	I	35	HIS
3	I	84	ASN

5.3.3 RNA ⓘ

There are no RNA molecules in this entry.

5.4 Non-standard residues in protein, DNA, RNA chains ⓘ

There are no non-standard protein/DNA/RNA residues in this entry.

5.5 Carbohydrates

2 carbohydrates are modelled in this entry.

In the following table, the Counts columns list the number of bonds (or angles) for which Mogul statistics could be retrieved, the number of bonds (or angles) that are observed in the model and the number of bonds (or angles) that are defined in the chemical component dictionary. The Link column lists molecule types, if any, to which the group is linked. The Z score for a bond length (or angle) is the number of standard deviations the observed value is removed from the expected value. A bond length (or angle) with $|Z| > 2$ is considered an outlier worth inspection. RMSZ is the root-mean-square of all Z scores of the bond lengths (or angles).

Mol	Type	Chain	Res	Link	Bond lengths			Bond angles		
					Counts	RMSZ	# $ Z > 2$	Counts	RMSZ	# $ Z > 2$
6	NAG	A	402	1,6	14,14,15	0.54	0	15,19,21	1.34	2 (13%)
6	NAG	A	403	6	14,14,15	0.80	1 (7%)	15,19,21	1.16	1 (6%)

In the following table, the Chirals column lists the number of chiral outliers, the number of chiral centers analysed, the number of these observed in the model and the number defined in the chemical component dictionary. Similar counts are reported in the Torsion and Rings columns. '-' means no outliers of that kind were identified.

Mol	Type	Chain	Res	Link	Chirals	Torsions	Rings
6	NAG	A	402	1,6	-	0/6/23/26	0/1/1/1
6	NAG	A	403	6	-	0/6/23/26	0/1/1/1

All (1) bond length outliers are listed below:

Mol	Chain	Res	Type	Atoms	Z	Observed(Å)	Ideal(Å)
6	A	403	NAG	C1-C2	2.10	1.55	1.52

All (3) bond angle outliers are listed below:

Mol	Chain	Res	Type	Atoms	Z	Observed(°)	Ideal(°)
6	A	402	NAG	C4-C3-C2	2.31	114.41	111.02
6	A	403	NAG	C4-C3-C2	2.97	115.36	111.02
6	A	402	NAG	C1-O5-C5	3.08	116.41	112.17

There are no chirality outliers.

There are no torsion outliers.

There are no ring outliers.

1 monomer is involved in 2 short contacts:

Mol	Chain	Res	Type	Clashes	Symm-Clashes
6	A	402	NAG	2	0

5.6 Ligand geometry

4 ligands are modelled in this entry.

In the following table, the Counts columns list the number of bonds (or angles) for which Mogul statistics could be retrieved, the number of bonds (or angles) that are observed in the model and the number of bonds (or angles) that are defined in the chemical component dictionary. The Link column lists molecule types, if any, to which the group is linked. The Z score for a bond length (or angle) is the number of standard deviations the observed value is removed from the expected value. A bond length (or angle) with $|Z| > 2$ is considered an outlier worth inspection. RMSZ is the root-mean-square of all Z scores of the bond lengths (or angles).

Mol	Type	Chain	Res	Link	Bond lengths			Bond angles		
					Counts	RMSZ	$\# Z > 2$	Counts	RMSZ	$\# Z > 2$
5	NAG	A	401	1	14,14,15	0.67	0	15,19,21	1.48	2 (13%)
5	NAG	A	404	1	14,14,15	0.68	0	15,19,21	1.49	2 (13%)
7	MLI	I	301	-	0,6,6	0.00	-	0,7,7	0.00	-
7	MLI	J	301	-	0,6,6	0.00	-	0,7,7	0.00	-

In the following table, the Chirals column lists the number of chiral outliers, the number of chiral centers analysed, the number of these observed in the model and the number defined in the chemical component dictionary. Similar counts are reported in the Torsion and Rings columns. '-' means no outliers of that kind were identified.

Mol	Type	Chain	Res	Link	Chirals	Torsions	Rings
5	NAG	A	401	1	-	0/6/23/26	0/1/1/1
5	NAG	A	404	1	-	0/6/23/26	0/1/1/1
7	MLI	I	301	-	-	0/0/4/4	0/0/0/0
7	MLI	J	301	-	-	0/0/4/4	0/0/0/0

There are no bond length outliers.

All (4) bond angle outliers are listed below:

Mol	Chain	Res	Type	Atoms	Z	Observed(°)	Ideal(°)
5	A	404	NAG	C4-C3-C2	-2.88	106.80	111.02
5	A	401	NAG	C4-C3-C2	2.48	114.65	111.02
5	A	404	NAG	C1-O5-C5	3.12	116.46	112.17
5	A	401	NAG	C1-O5-C5	3.19	116.57	112.17

There are no chirality outliers.

There are no torsion outliers.

There are no ring outliers.

1 monomer is involved in 1 short contact:

Mol	Chain	Res	Type	Clashes	Symm-Clashes
7	J	301	MLI	1	0

5.7 Other polymers [i](#)

There are no such residues in this entry.

5.8 Polymer linkage issues [i](#)

There are no chain breaks in this entry.

6 Fit of model and data [i](#)

6.1 Protein, DNA and RNA chains [i](#)

In the following table, the column labelled ‘#RSRZ> 2’ contains the number (and percentage) of RSRZ outliers, followed by percent RSRZ outliers for the chain as percentile scores relative to all X-ray entries and entries of similar resolution. The OWAB column contains the minimum, median, 95th percentile and maximum values of the occupancy-weighted average B-factor per residue. The column labelled ‘Q< 0.9’ lists the number of (and percentage) of residues with an average occupancy less than 0.9.

Mol	Chain	Analysed	<RSRZ>	#RSRZ>2	OWAB(Å ²)	Q<0.9
1	A	328/331 (99%)	0.25	8 (2%) 59 56	58, 74, 96, 145	0
2	B	171/179 (95%)	0.77	22 (12%) 4 3	63, 85, 136, 168	0
3	I	219/219 (100%)	0.66	28 (12%) 4 3	65, 102, 172, 195	0
4	J	212/214 (99%)	0.48	20 (9%) 9 6	60, 89, 149, 173	0
All	All	930/943 (98%)	0.49	78 (8%) 12 9	58, 82, 150, 195	0

The worst 5 of 78 RSRZ outliers are listed below:

Mol	Chain	Res	Type	RSRZ
3	I	195	GLY	8.3
1	A	9	PRO	7.4
3	I	196	THR	6.8
1	A	7	ALA	6.0
3	I	199	TYR	5.2

6.2 Non-standard residues in protein, DNA, RNA chains [i](#)

There are no non-standard protein/DNA/RNA residues in this entry.

6.3 Carbohydrates [i](#)

In the following table, the Atoms column lists the number of modelled atoms in the group and the number defined in the chemical component dictionary. LLDF column lists the quality of electron density of the group with respect to its neighbouring residues in protein, DNA or RNA chains. The B-factors column lists the minimum, median, 95th percentile and maximum values of B factors of atoms in the group. The column labelled ‘Q< 0.9’ lists the number of atoms with occupancy less than 0.9.

Mol	Type	Chain	Res	Atoms	RSCC	RSR	LLDF	B-factors(\AA^2)	Q<0.9
6	NAG	A	402	14/15	0.91	0.17	-0.41	80,85,91,96	0
6	NAG	A	403	14/15	0.81	0.33	-	101,103,104,104	0

6.4 Ligands [i](#)

In the following table, the Atoms column lists the number of modelled atoms in the group and the number defined in the chemical component dictionary. LLDF column lists the quality of electron density of the group with respect to its neighbouring residues in protein, DNA or RNA chains. The B-factors column lists the minimum, median, 95th percentile and maximum values of B factors of atoms in the group. The column labelled 'Q< 0.9' lists the number of atoms with occupancy less than 0.9.

Mol	Type	Chain	Res	Atoms	RSCC	RSR	LLDF	B-factors(\AA^2)	Q<0.9
7	MLI	I	301	7/7	0.97	0.36	3.75	95,97,97,98	0
7	MLI	J	301	7/7	0.93	0.19	-0.67	95,96,97,97	0
5	NAG	A	404	14/15	0.86	0.20	-	84,91,97,98	0
5	NAG	A	401	14/15	0.85	0.23	-	88,97,99,100	0

6.5 Other polymers [i](#)

There are no such residues in this entry.