



# Full wwPDB X-ray Structure Validation Report ⓘ

Oct 12, 2017 – 07:04 PM EDT

PDB ID : 2PZG  
Title : Minimal human CFTR first nucleotide binding domain as a monomer  
Authors : Atwell, S.; Conners, K.; Emtage, S.; Gheyi, T.; Glenn, N.R.; Hendle, J.; Lewis, H.A.; Lu, F.; Rodgers, L.A.; Romero, R.; Sauder, J.M.; Smith, D.; Tien, H.; Wasserman, S.R.; Zhao, X.  
Deposited on : unknown  
Resolution : 1.80 Å(reported)

This is a Full wwPDB X-ray Structure Validation Report for a publicly released PDB entry.

We welcome your comments at [validation@mail.wwpdb.org](mailto:validation@mail.wwpdb.org)

A user guide is available at

<http://wwpdb.org/validation/2016/XrayValidationReportHelp>

with specific help available everywhere you see the ⓘ symbol.

---

The following versions of software and data (see [references ⓘ](#)) were used in the production of this report:

MolProbity : 4.02b-467  
Mogul : 1.7.2 (RC1), CSD as538be (2017)  
Xtriage (Phenix) : 1.9-1692  
EDS : rb-20030345  
Percentile statistics : 20161228.v01 (using entries in the PDB archive December 28th 2016)  
Refmac : 5.8.0135  
CCP4 : 6.5.0  
Ideal geometry (proteins) : Engh & Huber (2001)  
Ideal geometry (DNA, RNA) : Parkinson et al. (1996)  
Validation Pipeline (wwPDB-VP) : rb-20030345

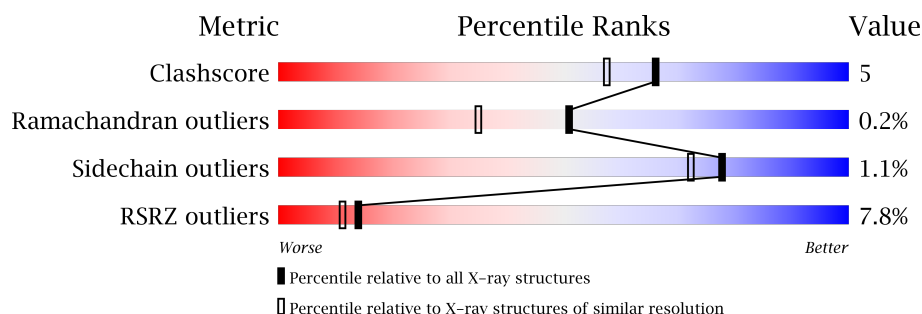
# 1 Overall quality at a glance

The following experimental techniques were used to determine the structure:

*X-RAY DIFFRACTION*

The reported resolution of this entry is 1.80 Å.

Percentile scores (ranging between 0-100) for global validation metrics of the entry are shown in the following graphic. The table shows the number of entries on which the scores are based.



Metric	Whole archive (#Entries)	Similar resolution (#Entries, resolution range(Å))
Clashscore	112137	5742 (1.80-1.80)
Ramachandran outliers	110173	5676 (1.80-1.80)
Sidechain outliers	110143	5675 (1.80-1.80)
RSRZ outliers	101464	4906 (1.80-1.80)

The table below summarises the geometric issues observed across the polymeric chains and their fit to the electron density. The red, orange, yellow and green segments on the lower bar indicate the fraction of residues that contain outliers for  $\geq 3$ , 2, 1 and 0 types of geometric quality criteria. A grey segment represents the fraction of residues that are not modelled. The numeric value for each fraction is indicated below the corresponding segment, with a dot representing fractions  $\leq 5\%$ . The upper red bar (where present) indicates the fraction of residues that have poor fit to the electron density. The numeric value is given above the bar.

Mol	Chain	Length	Quality of chain
1	A	241	 7% 83% 9% • 7%
1	B	241	 7% 80% 9% 11%

The following table lists non-polymeric compounds, carbohydrate monomers and non-standard residues in protein, DNA, RNA chains that are outliers for geometric or electron-density-fit criteria:

Mol	Type	Chain	Res	Chirality	Geometry	Clashes	Electron density
4	GOL	A	6	-	-	X	X
4	GOL	B	5	-	-	-	X

*Continued on next page...*

*Continued from previous page...*

Mol	Type	Chain	Res	Chirality	Geometry	Clashes	Electron density
4	GOL	B	7	-	-	-	X

## 2 Entry composition

There are 5 unique types of molecules in this entry. The entry contains 3694 atoms, of which 0 are hydrogens and 0 are deuteriums.

In the tables below, the ZeroOcc column contains the number of atoms modelled with zero occupancy, the AltConf column contains the number of residues with at least one atom in alternate conformation and the Trace column contains the number of residues modelled with at most 2 atoms.

- Molecule 1 is a protein called Cystic fibrosis transmembrane conductance regulator.

Mol	Chain	Residues	Atoms					ZeroOcc	AltConf	Trace
1	A	223	Total	C	N	O	S	0	3	0
			1710	1097	275	326	12			
1	B	215	Total	C	N	O	S	0	3	0
			1652	1059	263	318	12			

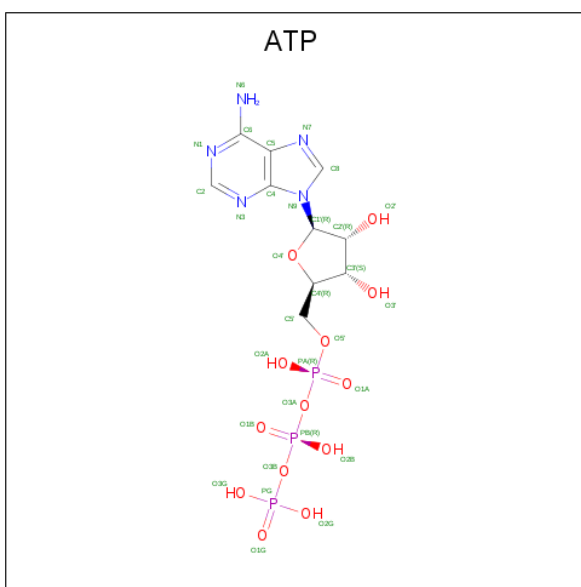
There are 4 discrepancies between the modelled and reference sequences:

Chain	Residue	Modelled	Actual	Comment	Reference
A	374	SER	-	EXPRESSION TAG	UNP P13569
B	374	SER	-	EXPRESSION TAG	UNP P13569
A	470	MET	VAL	VARIANT	UNP P13569
B	470	MET	VAL	VARIANT	UNP P13569

- Molecule 2 is MAGNESIUM ION (three-letter code: MG) (formula: Mg).

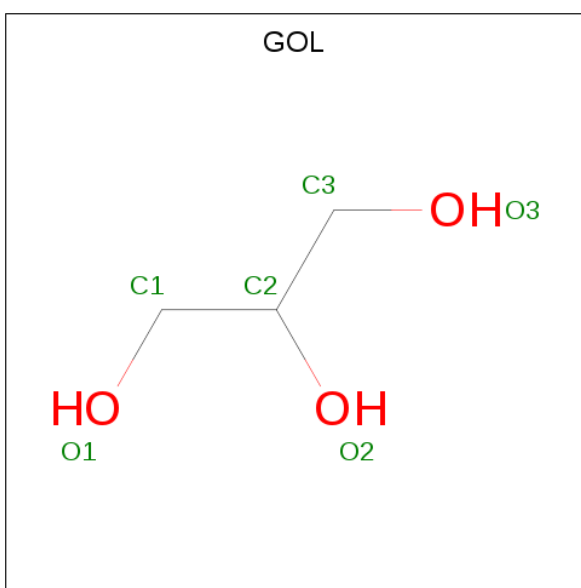
Mol	Chain	Residues	Atoms		ZeroOcc	AltConf
2	B	1	Total	Mg	0	0
			1	1		
2	A	1	Total	Mg	0	0
			1	1		

- Molecule 3 is ADENOSINE-5'-TRIPHOSPHATE (three-letter code: ATP) (formula: C<sub>10</sub>H<sub>16</sub>N<sub>5</sub>O<sub>13</sub>P<sub>3</sub>).



Mol	Chain	Residues	Atoms					ZeroOcc	AltConf
3	A	1	Total 31	C 10	N 5	O 13	P 3	0	0
3	B	1	Total 31	C 10	N 5	O 13	P 3	0	0

- Molecule 4 is GLYCEROL (three-letter code: GOL) (formula:  $\text{C}_3\text{H}_8\text{O}_3$ ).



Mol	Chain	Residues	Atoms	ZeroOcc	AltConf
4	A	1	Total C O 6 3 3	0	0
4	B	1	Total C O 6 3 3	0	0

*Continued on next page...*

*Continued from previous page...*

Mol	Chain	Residues	Atoms			ZeroOcc	AltConf
4	B	1	Total	C	O	0	0
			6	3	3		

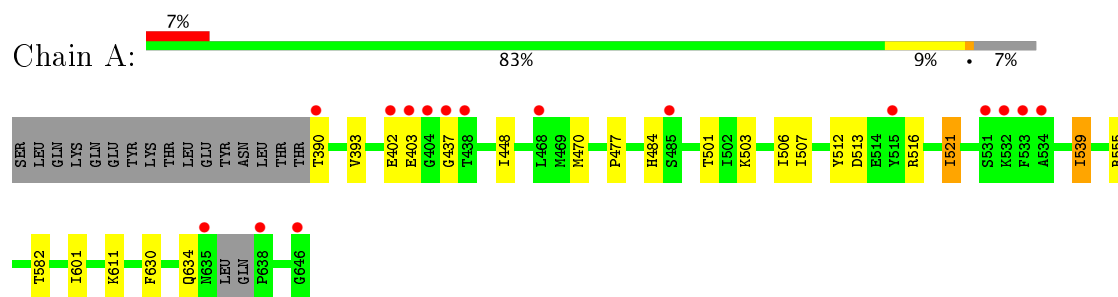
- Molecule 5 is water.

Mol	Chain	Residues	Atoms		ZeroOcc	AltConf
5	A	119	Total	O	0	0
			119	119		
5	B	131	Total	O	0	0
			131	131		

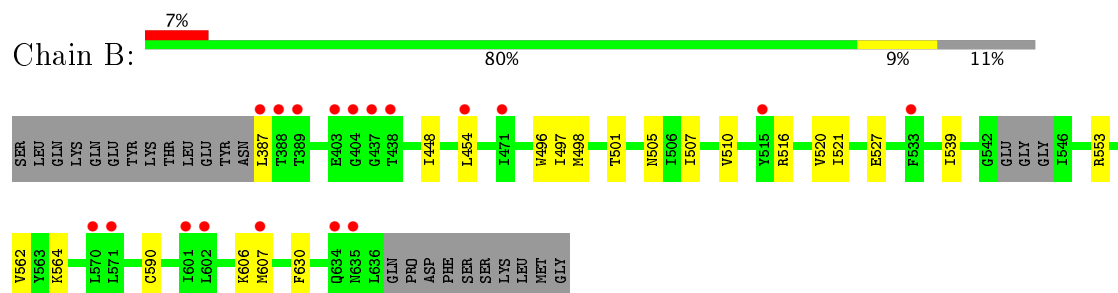
### 3 Residue-property plots [i](#)

These plots are drawn for all protein, RNA and DNA chains in the entry. The first graphic for a chain summarises the proportions of the various outlier classes displayed in the second graphic. The second graphic shows the sequence view annotated by issues in geometry and electron density. Residues are color-coded according to the number of geometric quality criteria for which they contain at least one outlier: green = 0, yellow = 1, orange = 2 and red = 3 or more. A red dot above a residue indicates a poor fit to the electron density ( $\text{RSRZ} > 2$ ). Stretches of 2 or more consecutive residues without any outlier are shown as a green connector. Residues present in the sample, but not in the model, are shown in grey.

- Molecule 1: Cystic fibrosis transmembrane conductance regulator



- Molecule 1: Cystic fibrosis transmembrane conductance regulator



## 4 Data and refinement statistics

Property	Value	Source
Space group	P 21 21 21	Depositor
Cell constants a, b, c, $\alpha$ , $\beta$ , $\gamma$	62.42Å 81.50Å 99.30Å 90.00° 90.00° 90.00°	Depositor
Resolution (Å)	24.91 – 1.80 24.91 – 1.80	Depositor EDS
% Data completeness (in resolution range)	99.7 (24.91-1.80) 99.8 (24.91-1.80)	Depositor EDS
$R_{merge}$	0.08	Depositor
$R_{sym}$	0.08	Depositor
$\langle I/\sigma(I) \rangle$ <sup>1</sup>	2.69 (at 1.80Å)	Xtriage
Refinement program	REFMAC	Depositor
R, $R_{free}$	0.203 , 0.234 0.203 , (Not available)	Depositor DCC
$R_{free}$ test set	No test flags present.	DCC
Wilson B-factor (Å <sup>2</sup> )	24.9	Xtriage
Anisotropy	0.279	Xtriage
Bulk solvent $k_{sol}$ (e/Å <sup>3</sup> ), $B_{sol}$ (Å <sup>2</sup> )	0.39 , 53.3	EDS
L-test for twinning <sup>2</sup>	$\langle  L  \rangle = 0.48$ , $\langle L^2 \rangle = 0.31$	Xtriage
Estimated twinning fraction	No twinning to report.	Xtriage
$F_o, F_c$ correlation	0.95	EDS
Total number of atoms	3694	wwPDB-VP
Average B, all atoms (Å <sup>2</sup> )	27.0	wwPDB-VP

Xtriage's analysis on translational NCS is as follows: *The largest off-origin peak in the Patterson function is 5.39% of the height of the origin peak. No significant pseudotranslation is detected.*

<sup>1</sup>Intensities estimated from amplitudes.

<sup>2</sup>Theoretical values of  $\langle |L| \rangle$ ,  $\langle L^2 \rangle$  for acentric reflections are 0.5, 0.333 respectively for untwinned datasets, and 0.375, 0.2 for perfectly twinned datasets.



## 5 Model quality

### 5.1 Standard geometry

Bond lengths and bond angles in the following residue types are not validated in this section: GOL, MG, ATP

The Z score for a bond length (or angle) is the number of standard deviations the observed value is removed from the expected value. A bond length (or angle) with  $|Z| > 5$  is considered an outlier worth inspection. RMSZ is the root-mean-square of all Z scores of the bond lengths (or angles).

Mol	Chain	Bond lengths		Bond angles	
		RMSZ	$\# Z  > 5$	RMSZ	$\# Z  > 5$
1	A	0.55	0/1751	0.56	0/2360
1	B	0.55	0/1691	0.59	0/2283
All	All	0.55	0/3442	0.58	0/4643

There are no bond length outliers.

There are no bond angle outliers.

There are no chirality outliers.

There are no planarity outliers.

### 5.2 Too-close contacts

In the following table, the Non-H and H(model) columns list the number of non-hydrogen atoms and hydrogen atoms in the chain respectively. The H(added) column lists the number of hydrogen atoms added and optimized by MolProbity. The Clashes column lists the number of clashes within the asymmetric unit, whereas Symm-Clashes lists symmetry related clashes.

Mol	Chain	Non-H	H(model)	H(added)	Clashes	Symm-Clashes
1	A	1710	0	1676	18	0
1	B	1652	0	1616	12	0
2	A	1	0	0	0	0
2	B	1	0	0	0	0
3	A	31	0	12	0	0
3	B	31	0	12	0	0
4	A	6	0	8	4	0
4	B	12	0	16	2	0
5	A	119	0	0	2	0
5	B	131	0	0	2	0
All	All	3694	0	3340	31	0

The all-atom clashscore is defined as the number of clashes found per 1000 atoms (including hydrogen atoms). The all-atom clashscore for this structure is 5.

All (31) close contacts within the same asymmetric unit are listed below, sorted by their clash magnitude.

Atom-1	Atom-2	Interatomic distance (Å)	Clash overlap (Å)
1:A:555:ARG:HE	4:A:6:GOL:H12	1.19	1.06
1:A:555:ARG:NE	4:A:6:GOL:H12	1.94	0.83
1:B:564:LYS:HD2	4:B:7:GOL:H31	1.62	0.81
1:A:402:GLU:HG3	1:A:437:GLY:HA3	1.62	0.79
4:B:5:GOL:H11	5:B:770:HOH:O	1.90	0.72
1:B:553:ARG:HG3	5:B:683:HOH:O	2.00	0.61
1:B:497:ILE:HG12	1:B:553:ARG:HG2	1.83	0.60
1:B:507:ILE:O	1:B:510:VAL:HG22	2.03	0.59
1:B:448:ILE:HG21	1:B:454:LEU:HB2	1.90	0.54
1:A:390:THR:N	5:A:725:HOH:O	2.41	0.53
1:A:555:ARG:HE	4:A:6:GOL:C1	2.08	0.53
1:B:521:ILE:HG22	1:B:527:GLU:HG3	1.91	0.51
1:B:562:VAL:HG21	1:B:590:CYS:SG	2.51	0.51
1:A:506:ILE:HD13	1:A:521:ILE:HD11	1.94	0.49
1:A:501:THR:HA	1:A:539:ILE:O	2.12	0.48
1:B:501:THR:HA	1:B:539:ILE:O	2.14	0.48
1:A:506:ILE:CD1	1:A:521:ILE:HD11	2.46	0.45
1:A:503:LYS:O	1:A:507:ILE:HG12	2.18	0.44
1:B:498[A]:MET:HG2	1:B:505:ASN:OD1	2.18	0.44
1:A:390:THR:HG23	1:A:393:VAL:HG23	2.00	0.43
1:A:503:LYS:HE2	1:A:512:TYR:CE1	2.54	0.43
1:B:496:TRP:CZ3	1:B:498[B]:MET:HG2	2.53	0.43
1:A:448:ILE:CD1	1:A:601:ILE:HD11	2.48	0.42
1:A:513:ASP:OD2	1:A:516:ARG:HB2	2.20	0.42
1:A:582:THR:HG21	4:A:6:GOL:H2	2.01	0.41
1:B:607:MET:CE	1:B:630:PHE:HE1	2.34	0.41
1:A:634:GLN:HG3	1:A:634:GLN:H	1.65	0.41
1:A:484:HIS:HD2	5:A:757:HOH:O	2.02	0.41
1:A:611:LYS:HG2	1:A:630:PHE:CZ	2.56	0.41
1:B:516:ARG:O	1:B:520:VAL:HG23	2.21	0.41
1:A:470:MET:HE1	1:A:477:PRO:HB3	2.02	0.40

There are no symmetry-related clashes.

## 5.3 Torsion angles [i](#)

### 5.3.1 Protein backbone [i](#)

In the following table, the Percentiles column shows the percent Ramachandran outliers of the chain as a percentile score with respect to all X-ray entries followed by that with respect to entries of similar resolution.

The Analysed column shows the number of residues for which the backbone conformation was analysed, and the total number of residues.

Mol	Chain	Analysed	Favoured	Allowed	Outliers	Percentiles	
1	A	222/241 (92%)	213 (96%)	8 (4%)	1 (0%)	32	17
1	B	214/241 (89%)	209 (98%)	5 (2%)	0	100	100
All	All	436/482 (90%)	422 (97%)	13 (3%)	1 (0%)	51	35

All (1) Ramachandran outliers are listed below:

Mol	Chain	Res	Type
1	A	403	GLU

### 5.3.2 Protein sidechains [i](#)

In the following table, the Percentiles column shows the percent sidechain outliers of the chain as a percentile score with respect to all X-ray entries followed by that with respect to entries of similar resolution.

The Analysed column shows the number of residues for which the sidechain conformation was analysed, and the total number of residues.

Mol	Chain	Analysed	Rotameric	Outliers	Percentiles	
1	A	181/209 (87%)	179 (99%)	2 (1%)	78	72
1	B	176/209 (84%)	174 (99%)	2 (1%)	78	72
All	All	357/418 (85%)	353 (99%)	4 (1%)	78	72

All (4) residues with a non-rotameric sidechain are listed below:

Mol	Chain	Res	Type
1	A	521	ILE
1	A	539	ILE
1	B	387	LEU
1	B	606	LYS

Some sidechains can be flipped to improve hydrogen bonding and reduce clashes. All (2) such sidechains are listed below:

Mol	Chain	Res	Type
1	A	525	GLN
1	B	538	ASN

### 5.3.3 RNA ⓘ

There are no RNA molecules in this entry.

## 5.4 Non-standard residues in protein, DNA, RNA chains ⓘ

There are no non-standard protein/DNA/RNA residues in this entry.

## 5.5 Carbohydrates ⓘ

There are no carbohydrates in this entry.

## 5.6 Ligand geometry ⓘ

Of 7 ligands modelled in this entry, 2 are monoatomic - leaving 5 for Mogul analysis.

In the following table, the Counts columns list the number of bonds (or angles) for which Mogul statistics could be retrieved, the number of bonds (or angles) that are observed in the model and the number of bonds (or angles) that are defined in the Chemical Component Dictionary. The Link column lists molecule types, if any, to which the group is linked. The Z score for a bond length (or angle) is the number of standard deviations the observed value is removed from the expected value. A bond length (or angle) with  $|Z| > 2$  is considered an outlier worth inspection. RMSZ is the root-mean-square of all Z scores of the bond lengths (or angles).

Mol	Type	Chain	Res	Link	Bond lengths			Bond angles		
					Counts	RMSZ	$\# Z  > 2$	Counts	RMSZ	$\# Z  > 2$
3	ATP	A	1	-	27,33,33	1.11	1 (3%)	25,52,52	1.78	4 (16%)
4	GOL	A	6	-	5,5,5	0.33	0	5,5,5	0.64	0
3	ATP	B	2	-	27,33,33	1.12	2 (7%)	25,52,52	1.72	2 (8%)
4	GOL	B	5	-	5,5,5	0.35	0	5,5,5	0.17	0
4	GOL	B	7	-	5,5,5	0.28	0	5,5,5	0.36	0

In the following table, the Chirals column lists the number of chiral outliers, the number of chiral centers analysed, the number of these observed in the model and the number defined in the Chemical Component Dictionary. Similar counts are reported in the Torsion and Rings columns. '-' means no outliers of that kind were identified.

Mol	Type	Chain	Res	Link	Chirals	Torsions	Rings
3	ATP	A	1	-	-	0/18/38/38	0/3/3/3
4	GOL	A	6	-	-	0/4/4/4	0/0/0/0
3	ATP	B	2	-	-	0/18/38/38	0/3/3/3
4	GOL	B	5	-	-	0/4/4/4	0/0/0/0
4	GOL	B	7	-	-	0/4/4/4	0/0/0/0

All (3) bond length outliers are listed below:

Mol	Chain	Res	Type	Atoms	Z	Observed(Å)	Ideal(Å)
3	B	2	ATP	C2-N3	2.20	1.35	1.32
3	B	2	ATP	C5-C4	3.14	1.47	1.40
3	A	1	ATP	C5-C4	3.45	1.48	1.40

All (6) bond angle outliers are listed below:

Mol	Chain	Res	Type	Atoms	Z	Observed(°)	Ideal(°)
3	A	1	ATP	N3-C2-N1	-6.47	123.22	128.86
3	B	2	ATP	N3-C2-N1	-6.34	123.33	128.86
3	A	1	ATP	C4-C5-N7	-2.71	106.79	109.41
3	B	2	ATP	C4-C5-N7	-2.17	107.32	109.41
3	A	1	ATP	O2B-PB-O1B	2.45	124.96	112.28
3	A	1	ATP	C4'-O4'-C1'	2.85	112.80	109.77

There are no chirality outliers.

There are no torsion outliers.

There are no ring outliers.

3 monomers are involved in 6 short contacts:

Mol	Chain	Res	Type	Clashes	Symm-Clashes
4	A	6	GOL	4	0
4	B	5	GOL	1	0
4	B	7	GOL	1	0

## 5.7 Other polymers ⓘ

There are no such residues in this entry.

## 5.8 Polymer linkage issues ⓘ

There are no chain breaks in this entry.

## 6 Fit of model and data ⓘ

### 6.1 Protein, DNA and RNA chains ⓘ

In the following table, the column labelled ‘#RSRZ> 2’ contains the number (and percentage) of RSRZ outliers, followed by percent RSRZ outliers for the chain as percentile scores relative to all X-ray entries and entries of similar resolution. The OWAB column contains the minimum, median, 95<sup>th</sup> percentile and maximum values of the occupancy-weighted average B-factor per residue. The column labelled ‘Q< 0.9’ lists the number of (and percentage) of residues with an average occupancy less than 0.9.

Mol	Chain	Analysed	<RSRZ>	#RSRZ>2		OWAB(Å <sup>2</sup> )	Q<0.9
1	A	223/241 (92%)	0.31	16 (7%)	16 13	15, 25, 46, 51	0
1	B	215/241 (89%)	0.33	18 (8%)	12 10	14, 24, 40, 54	0
All	All	438/482 (90%)	0.32	34 (7%)	14 11	14, 24, 45, 54	0

All (34) RSRZ outliers are listed below:

Mol	Chain	Res	Type	RSRZ
1	A	403	GLU	5.4
1	B	388	THR	5.4
1	A	533	PHE	4.9
1	B	635	ASN	4.8
1	A	534	ALA	4.6
1	A	635	ASN	4.3
1	B	437	GLY	4.3
1	A	515	TYR	4.1
1	A	437	GLY	4.0
1	A	390	THR	4.0
1	B	515	TYR	3.8
1	B	387	LEU	3.5
1	B	438	THR	3.1
1	A	646	GLY	3.1
1	A	438	THR	3.1
1	A	532	LYS	3.0
1	B	404	GLY	2.9
1	A	404	GLY	2.7
1	A	531	SER	2.7
1	A	402	GLU	2.7
1	B	601	ILE	2.6
1	B	571	LEU	2.6
1	B	634	GLN	2.6
1	A	638	PRO	2.4

*Continued on next page...*

*Continued from previous page...*

Mol	Chain	Res	Type	RSRZ
1	B	403	GLU	2.4
1	A	485	SER	2.4
1	B	607	MET	2.4
1	B	533	PHE	2.4
1	B	389	THR	2.3
1	B	454	LEU	2.2
1	B	471	ILE	2.2
1	A	468[A]	LEU	2.2
1	B	570	LEU	2.0
1	B	602	LEU	2.0

## 6.2 Non-standard residues in protein, DNA, RNA chains [i](#)

There are no non-standard protein/DNA/RNA residues in this entry.

## 6.3 Carbohydrates [i](#)

There are no carbohydrates in this entry.

## 6.4 Ligands [i](#)

In the following table, the Atoms column lists the number of modelled atoms in the group and the number defined in the chemical component dictionary. LLDF column lists the quality of electron density of the group with respect to its neighbouring residues in protein, DNA or RNA chains. The B-factors column lists the minimum, median, 95<sup>th</sup> percentile and maximum values of B factors of atoms in the group. The column labelled 'Q< 0.9' lists the number of atoms with occupancy less than 0.9.

Mol	Type	Chain	Res	Atoms	RSCC	RSR	LLDF	B-factors(Å <sup>2</sup> )	Q<0.9
4	GOL	B	7	6/6	0.83	0.17	2.99	47,54,55,55	0
4	GOL	B	5	6/6	0.89	0.16	2.54	50,50,51,51	0
4	GOL	A	6	6/6	0.88	0.18	2.29	40,41,44,44	0
3	ATP	A	1	31/31	0.96	0.12	0.66	18,36,43,43	0
3	ATP	B	2	31/31	0.97	0.11	0.60	17,28,34,38	0
2	MG	A	3	1/1	1.00	0.07	-	13,13,13,13	0
2	MG	B	4	1/1	1.00	0.07	-	14,14,14,14	0

## 6.5 Other polymers [i](#)

There are no such residues in this entry.