



# Full wwPDB X-ray Structure Validation Report ⓘ

Feb 11, 2018 – 10:43 PM EST

PDB ID : 5PZM  
Title : CRYSTAL STRUCTURE OF THE HEPATITIS C VIRUS NS5B RNA-DEPENDENT RNA POLYMERASE IN COMPLEX WITH 3-[2-(4-FLUOROPHENYL)-3-(METHYLCARBAMOYL)-1-BENZOFURAN-5-YL]BENZ OIC ACID  
Authors : Sheriff, S.  
Deposited on : 2017-02-27  
Resolution : 2.54 Å(reported)

This is a Full wwPDB X-ray Structure Validation Report for a publicly released PDB entry.

We welcome your comments at [validation@mail.wwpdb.org](mailto:validation@mail.wwpdb.org)

A user guide is available at

<http://wwpdb.org/validation/2016/XrayValidationReportHelp>

with specific help available everywhere you see the ⓘ symbol.

---

The following versions of software and data (see [references ⓘ](#)) were used in the production of this report:

MolProbity : 4.02b-467  
Mogul : 1.7.2 (RC1), CSD as538be (2017)  
Xtriage (Phenix) : 1.9-1692  
EDS : rb-20030736  
Percentile statistics : 20161228.v01 (using entries in the PDB archive December 28th 2016)  
Refmac : 5.8.0135  
CCP4 : 6.5.0  
Ideal geometry (proteins) : Engh & Huber (2001)  
Ideal geometry (DNA, RNA) : Parkinson et al. (1996)  
Validation Pipeline (wwPDB-VP) : rb-20030736

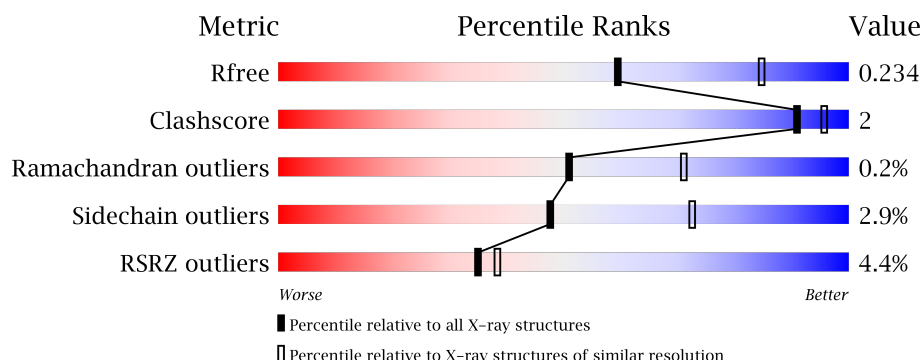
# 1 Overall quality at a glance

The following experimental techniques were used to determine the structure:

*X-RAY DIFFRACTION*

The reported resolution of this entry is 2.54 Å.

Percentile scores (ranging between 0-100) for global validation metrics of the entry are shown in the following graphic. The table shows the number of entries on which the scores are based.



Metric	Whole archive (#Entries)	Similar resolution (#Entries, resolution range(Å))
$R_{free}$	100719	4993 (2.58-2.50)
Clashscore	112137	5755 (2.58-2.50)
Ramachandran outliers	110173	5652 (2.58-2.50)
Sidechain outliers	110143	5654 (2.58-2.50)
RSRZ outliers	101464	5026 (2.58-2.50)

The table below summarises the geometric issues observed across the polymeric chains and their fit to the electron density. The red, orange, yellow and green segments on the lower bar indicate the fraction of residues that contain outliers for  $\geq 3$ , 2, 1 and 0 types of geometric quality criteria. A grey segment represents the fraction of residues that are not modelled. The numeric value for each fraction is indicated below the corresponding segment, with a dot representing fractions  $\leq 5\%$ . The upper red bar (where present) indicates the fraction of residues that have poor fit to the electron density. The numeric value is given above the bar.

Mol	Chain	Length	Quality of chain
1	A	574	<div> <div>3%</div> <div>88%</div> <div>7%</div> <div>••</div> </div>
1	B	574	<div> <div>6%</div> <div>90%</div> <div>5%</div> <div>5%</div> </div>

The following table lists non-polymeric compounds, carbohydrate monomers and non-standard residues in protein, DNA, RNA chains that are outliers for geometric or electron-density-fit criteria:

Mol	Type	Chain	Res	Chirality	Geometry	Clashes	Electron density
4	8XS	B	602	-	-	-	X
5	GOL	B	608	-	-	-	X

## 2 Entry composition [i](#)

There are 6 unique types of molecules in this entry. The entry contains 9011 atoms, of which 92 are hydrogens and 0 are deuteriums.

In the tables below, the ZeroOcc column contains the number of atoms modelled with zero occupancy, the AltConf column contains the number of residues with at least one atom in alternate conformation and the Trace column contains the number of residues modelled with at most 2 atoms.

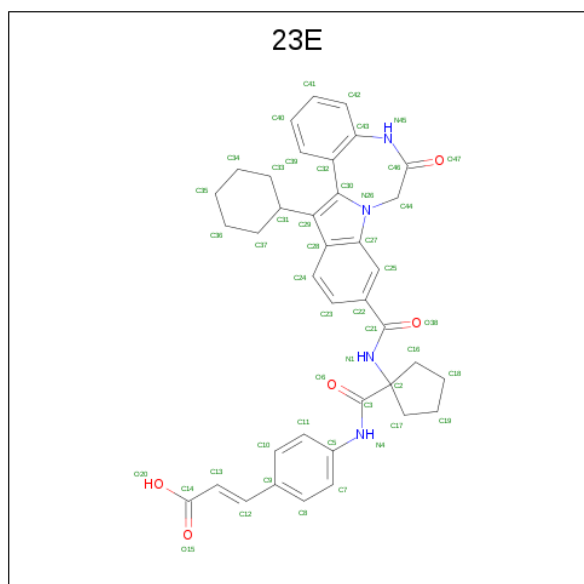
- Molecule 1 is a protein called RNA-directed RNA polymerase.

Mol	Chain	Residues	Atoms					ZeroOcc	AltConf	Trace
1	A	551	Total	C	N	O	S	0	1	0
			4273	2696	756	788	33			
1	B	545	Total	C	N	O	S	0	1	0
			4203	2649	741	781	32			

There are 2 discrepancies between the modelled and reference sequences:

Chain	Residue	Modelled	Actual	Comment	Reference
A	0	MET	-	expression tag	UNP Q9WMX2
B	0	MET	-	expression tag	UNP Q9WMX2

- Molecule 2 is (2E)-3-(4-{{(1-{{(13-cyclohexyl-6-oxo-6,7-dihydro-5H-indolo[1,2-d][1,4]benzodiazepin-10-yl)carbonyl}amino}cyclopentyl)carbonyl}amino}phenyl)prop-2-enoic acid (three-letter code: 23E) (formula: C<sub>38</sub>H<sub>38</sub>N<sub>4</sub>O<sub>5</sub>).



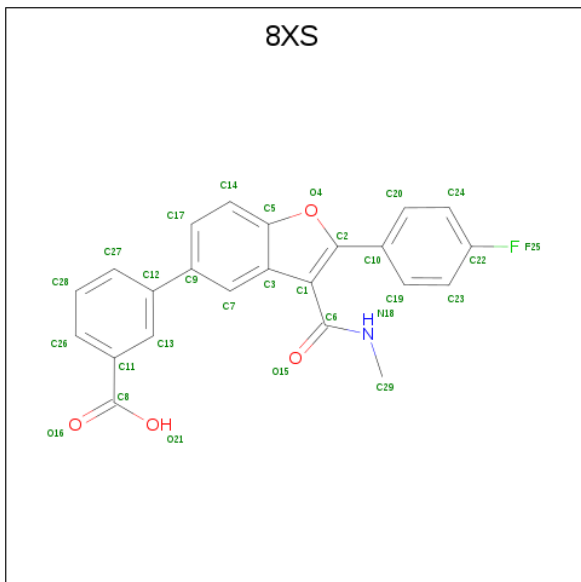
Mol	Chain	Residues	Atoms					ZeroOcc	AltConf
2	A	1	Total	C	H	N	O	38	0
			85	38	38	4	5		
2	B	1	Total	C	H	N	O	38	0
			85	38	38	4	5		

- Molecule 3 is SULFATE ION (three-letter code: SO4) (formula: O<sub>4</sub>S).



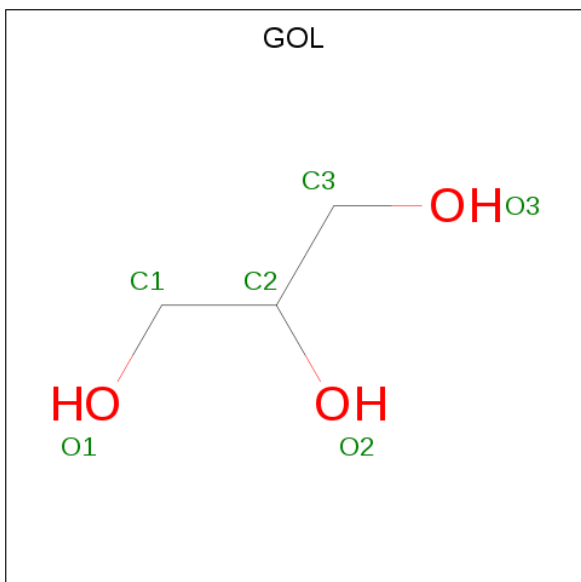
Mol	Chain	Residues	Atoms			ZeroOcc	AltConf
3	A	1	Total	O	S	0	0
			5	4	1		
3	A	1	Total	O	S	0	0
			5	4	1		
3	A	1	Total	O	S	0	0
			5	4	1		
3	A	1	Total	O	S	0	0
			5	4	1		
3	B	1	Total	O	S	0	0
			5	4	1		
3	B	1	Total	O	S	0	0
			5	4	1		
3	B	1	Total	O	S	0	0
			5	4	1		
3	B	1	Total	O	S	0	0
			5	4	1		

- Molecule 4 is 3-[2-(4-fluorophenyl)-3-(methylcarbamoyl)-1-benzofuran-5-yl]benzoic acid (three-letter code: 8XS) (formula:  $C_{23}H_{16}FNO_4$ ).



Mol	Chain	Residues	Atoms						ZeroOcc	AltConf
4	B	1	Total	C	F	H	N	O	16	0
			45	23	1	16	1	4		

- Molecule 5 is GLYCEROL (three-letter code: GOL) (formula:  $C_3H_8O_3$ ).



Mol	Chain	Residues	Atoms			ZeroOcc	AltConf
5	B	1	Total	C	O	0	0
			6	3	3		

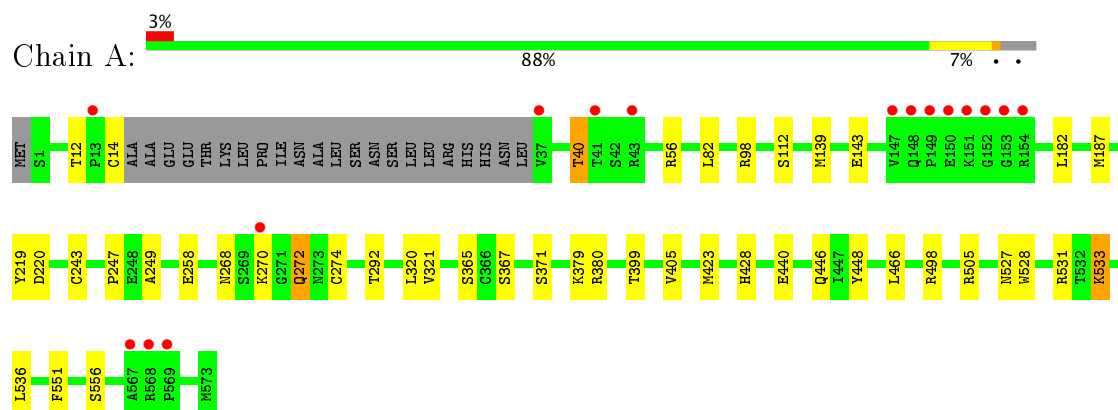
- Molecule 6 is water.

Mol	Chain	Residues	Atoms		ZeroOcc	AltConf
6	A	141	Total 141	O 141	0	0
6	B	123	Total 123	O 123	0	0

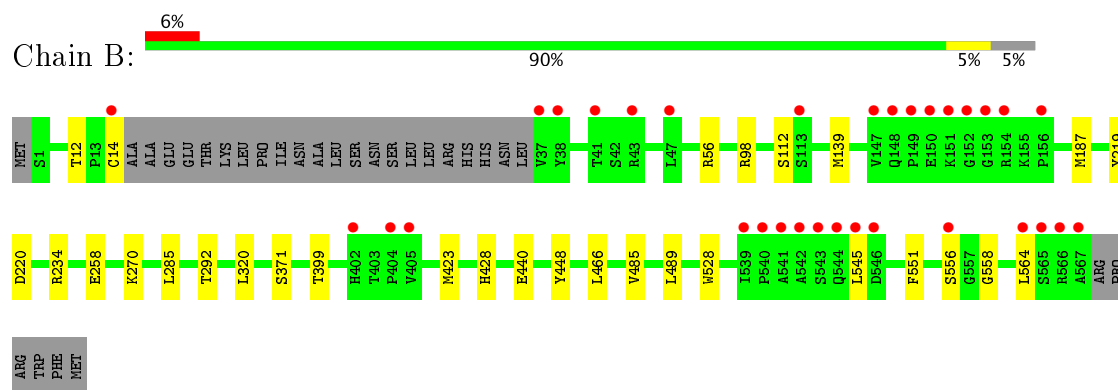
### 3 Residue-property plots [i](#)

These plots are drawn for all protein, RNA and DNA chains in the entry. The first graphic for a chain summarises the proportions of the various outlier classes displayed in the second graphic. The second graphic shows the sequence view annotated by issues in geometry and electron density. Residues are color-coded according to the number of geometric quality criteria for which they contain at least one outlier: green = 0, yellow = 1, orange = 2 and red = 3 or more. A red dot above a residue indicates a poor fit to the electron density ( $RSRZ > 2$ ). Stretches of 2 or more consecutive residues without any outlier are shown as a green connector. Residues present in the sample, but not in the model, are shown in grey.

#### • Molecule 1: RNA-directed RNA polymerase



#### • Molecule 1: RNA-directed RNA polymerase





## 4 Data and refinement statistics

Property	Value	Source
Space group	P 21 21 21	Depositor
Cell constants a, b, c, $\alpha$ , $\beta$ , $\gamma$	66.50 Å 91.60 Å 232.20 Å 90.00° 90.00° 90.00°	Depositor
Resolution (Å)	38.07 – 2.54 38.07 – 2.54	Depositor EDS
% Data completeness (in resolution range)	91.8 (38.07-2.54) 91.6 (38.07-2.54)	Depositor EDS
$R_{merge}$	(Not available)	Depositor
$R_{sym}$	0.07	Depositor
$\langle I/\sigma(I) \rangle$ <sup>1</sup>	4.61 (at 2.54 Å)	Xtriage
Refinement program	BUSTER 2.11.7	Depositor
R, $R_{free}$	0.192 , 0.230 0.191 , 0.234	Depositor DCC
$R_{free}$ test set	1069 reflections (2.50%)	DCC
Wilson B-factor (Å <sup>2</sup> )	29.5	Xtriage
Anisotropy	0.327	Xtriage
Bulk solvent $k_{sol}$ (e/Å <sup>3</sup> ), $B_{sol}$ (Å <sup>2</sup> )	0.34 , 46.8	EDS
L-test for twinning <sup>2</sup>	$\langle  L  \rangle = 0.50$ , $\langle L^2 \rangle = 0.33$	Xtriage
Estimated twinning fraction	No twinning to report.	Xtriage
$F_o, F_c$ correlation	0.94	EDS
Total number of atoms	9011	wwPDB-VP
Average B, all atoms (Å <sup>2</sup> )	32.0	wwPDB-VP

Xtriage's analysis on translational NCS is as follows: *The largest off-origin peak in the Patterson function is 4.65% of the height of the origin peak. No significant pseudotranslation is detected.*

<sup>1</sup>Intensities estimated from amplitudes.

<sup>2</sup>Theoretical values of  $\langle |L| \rangle$ ,  $\langle L^2 \rangle$  for acentric reflections are 0.5, 0.333 respectively for untwinned datasets, and 0.375, 0.2 for perfectly twinned datasets.

## 5 Model quality

### 5.1 Standard geometry

Bond lengths and bond angles in the following residue types are not validated in this section: 8XS, GOL, SO4, 23E

The Z score for a bond length (or angle) is the number of standard deviations the observed value is removed from the expected value. A bond length (or angle) with  $|Z| > 5$  is considered an outlier worth inspection. RMSZ is the root-mean-square of all Z scores of the bond lengths (or angles).

Mol	Chain	Bond lengths		Bond angles	
		RMSZ	# Z  >5	RMSZ	# Z  >5
1	A	0.48	0/4372	0.66	0/5934
1	B	0.48	0/4298	0.66	0/5837
All	All	0.48	0/8670	0.66	0/11771

There are no bond length outliers.

There are no bond angle outliers.

There are no chirality outliers.

There are no planarity outliers.

### 5.2 Too-close contacts

In the following table, the Non-H and H(model) columns list the number of non-hydrogen atoms and hydrogen atoms in the chain respectively. The H(added) column lists the number of hydrogen atoms added and optimized by MolProbity. The Clashes column lists the number of clashes within the asymmetric unit, whereas Symm-Clashes lists symmetry related clashes.

Mol	Chain	Non-H	H(model)	H(added)	Clashes	Symm-Clashes
1	A	4273	0	4247	21	0
1	B	4203	0	4166	15	0
2	A	47	38	37	0	0
2	B	47	38	37	0	0
3	A	25	0	0	0	0
3	B	25	0	0	0	0
4	B	29	16	0	0	0
5	B	6	0	8	0	0
6	A	141	0	0	0	0
6	B	123	0	0	0	0
All	All	8919	92	8495	34	0

The all-atom clashscore is defined as the number of clashes found per 1000 atoms (including hydrogen atoms). The all-atom clashscore for this structure is 2.

All (34) close contacts within the same asymmetric unit are listed below, sorted by their clash magnitude.

Atom-1	Atom-2	Interatomic distance (Å)	Clash overlap (Å)
1:A:40:THR:HG22	1:A:143:GLU:H	1.60	0.66
1:A:268:ASN:HB3	1:A:274:CYS:SG	2.40	0.61
1:A:321:VAL:HG21	1:A:365:SER:HB3	1.82	0.60
1:A:12:THR:HG21	1:A:270:LYS:HD2	1.82	0.60
1:B:12:THR:HG21	1:B:270:LYS:HD2	1.84	0.59
1:A:399:THR:HG21	1:A:428:HIS:NE2	2.17	0.59
1:B:399:THR:HG21	1:B:428:HIS:NE2	2.17	0.59
1:B:466:LEU:HD22	1:B:551:PHE:HE2	1.68	0.58
1:A:219:TYR:HB3	1:A:320:LEU:HD23	1.87	0.56
1:A:321:VAL:CG2	1:A:365:SER:HB3	2.36	0.56
1:B:219:TYR:HB3	1:B:320:LEU:HD23	1.88	0.55
1:A:247:PRO:HG3	1:B:234:ARG:NH1	2.22	0.55
1:B:448:TYR:CE2	1:B:551:PHE:HD1	2.25	0.54
1:A:405:VAL:HG11	1:A:446:GLN:HG2	1.93	0.51
1:A:448:TYR:CE2	1:A:551:PHE:HD1	2.29	0.50
1:A:187:MET:HE3	1:A:292:THR:HG22	1.94	0.49
1:B:187:MET:CE	1:B:292:THR:HG22	2.43	0.49
1:A:187:MET:CE	1:A:292:THR:HG22	2.43	0.49
1:A:268:ASN:ND2	1:A:272:GLN:HG2	2.28	0.48
1:B:423:MET:HE3	1:B:528:TRP:CZ3	2.48	0.48
1:A:527:ASN:O	1:A:533:LYS:HD3	2.13	0.48
1:A:466:LEU:HD22	1:A:551:PHE:HE2	1.79	0.48
1:A:505:ARG:NH2	1:A:531:ARG:HG3	2.30	0.47
1:B:485:VAL:O	1:B:489:LEU:HG	2.15	0.47
1:B:545:LEU:HD21	1:B:564:LEU:HD21	1.98	0.46
1:B:187:MET:HE3	1:B:292:THR:HG22	1.99	0.45
1:B:466:LEU:HD22	1:B:551:PHE:CE2	2.49	0.45
1:A:247:PRO:HG3	1:B:234:ARG:HD3	1.97	0.45
1:A:182:LEU:HD12	1:A:243:CYS:SG	2.56	0.45
1:B:423:MET:HA	1:B:528:TRP:CZ2	2.54	0.42
1:A:82:LEU:HD13	1:A:249:ALA:HB2	2.03	0.41
1:A:423:MET:HA	1:A:528:TRP:CZ2	2.56	0.40
1:A:268:ASN:CG	1:A:272:GLN:HG2	2.42	0.40
1:B:285:LEU:HA	1:B:558:GLY:HA2	2.03	0.40

There are no symmetry-related clashes.

## 5.3 Torsion angles

### 5.3.1 Protein backbone

In the following table, the Percentiles column shows the percent Ramachandran outliers of the chain as a percentile score with respect to all X-ray entries followed by that with respect to entries of similar resolution.

The Analysed column shows the number of residues for which the backbone conformation was analysed, and the total number of residues.

Mol	Chain	Analysed	Favoured	Allowed	Outliers	Percentiles	
1	A	548/574 (96%)	534 (97%)	12 (2%)	2 (0%)	38	57
1	B	542/574 (94%)	528 (97%)	14 (3%)	0	100	100
All	All	1090/1148 (95%)	1062 (97%)	26 (2%)	2 (0%)	51	71

All (2) Ramachandran outliers are listed below:

Mol	Chain	Res	Type
1	A	533	LYS
1	A	536	LEU

### 5.3.2 Protein sidechains

In the following table, the Percentiles column shows the percent sidechain outliers of the chain as a percentile score with respect to all X-ray entries followed by that with respect to entries of similar resolution.

The Analysed column shows the number of residues for which the sidechain conformation was analysed, and the total number of residues.

Mol	Chain	Analysed	Rotameric	Outliers	Percentiles	
1	A	457/486 (94%)	441 (96%)	16 (4%)	41	65
1	B	449/486 (92%)	439 (98%)	10 (2%)	57	80
All	All	906/972 (93%)	880 (97%)	26 (3%)	48	72

All (26) residues with a non-rotameric sidechain are listed below:

Mol	Chain	Res	Type
1	A	14	CYS
1	A	40	THR
1	A	56	ARG
1	A	98	ARG

*Continued on next page...*

*Continued from previous page...*

Mol	Chain	Res	Type
1	A	112	SER
1	A	139	MET
1	A	220	ASP
1	A	258	GLU
1	A	272	GLN
1	A	367	SER
1	A	371	SER
1	A	379	LYS
1	A	380	ARG
1	A	440	GLU
1	A	498	ARG
1	A	556	SER
1	B	14	CYS
1	B	56	ARG
1	B	98	ARG
1	B	112	SER
1	B	139	MET
1	B	220	ASP
1	B	258	GLU
1	B	371	SER
1	B	440	GLU
1	B	556	SER

Some sidechains can be flipped to improve hydrogen bonding and reduce clashes. All (1) such sidechains are listed below:

Mol	Chain	Res	Type
1	A	184	GLN

### 5.3.3 RNA ⓘ

There are no RNA molecules in this entry.

## 5.4 Non-standard residues in protein, DNA, RNA chains ⓘ

There are no non-standard protein/DNA/RNA residues in this entry.

## 5.5 Carbohydrates ⓘ

There are no carbohydrates in this entry.

## 5.6 Ligand geometry

14 ligands are modelled in this entry.

In the following table, the Counts columns list the number of bonds (or angles) for which Mogul statistics could be retrieved, the number of bonds (or angles) that are observed in the model and the number of bonds (or angles) that are defined in the Chemical Component Dictionary. The Link column lists molecule types, if any, to which the group is linked. The Z score for a bond length (or angle) is the number of standard deviations the observed value is removed from the expected value. A bond length (or angle) with  $|Z| > 2$  is considered an outlier worth inspection. RMSZ is the root-mean-square of all Z scores of the bond lengths (or angles).

Mol	Type	Chain	Res	Link	Bond lengths			Bond angles		
					Counts	RMSZ	# Z  > 2	Counts	RMSZ	# Z  > 2
2	23E	A	601	-	49,53,53	0.81	1 (2%)	59,77,77	0.78	2 (3%)
3	SO4	A	602	-	4,4,4	0.32	0	6,6,6	0.14	0
3	SO4	A	603	-	4,4,4	0.21	0	6,6,6	0.23	0
3	SO4	A	604	-	4,4,4	0.34	0	6,6,6	0.18	0
3	SO4	A	605	-	4,4,4	0.18	0	6,6,6	0.20	0
3	SO4	A	606	-	4,4,4	0.29	0	6,6,6	0.19	0
2	23E	B	601	-	49,53,53	0.81	1 (2%)	59,77,77	0.79	1 (1%)
4	8XS	B	602	-	26,32,32	0.62	1 (3%)	33,46,46	0.98	1 (3%)
3	SO4	B	603	-	4,4,4	0.25	0	6,6,6	0.24	0
3	SO4	B	604	-	4,4,4	0.06	0	6,6,6	0.26	0
3	SO4	B	605	-	4,4,4	0.26	0	6,6,6	0.22	0
3	SO4	B	606	-	4,4,4	0.26	0	6,6,6	0.13	0
3	SO4	B	607	-	4,4,4	0.29	0	6,6,6	0.17	0
5	GOL	B	608	-	5,5,5	0.16	0	5,5,5	0.26	0

In the following table, the Chirals column lists the number of chiral outliers, the number of chiral centers analysed, the number of these observed in the model and the number defined in the Chemical Component Dictionary. Similar counts are reported in the Torsion and Rings columns. '-' means no outliers of that kind were identified.

Mol	Type	Chain	Res	Link	Chirals	Torsions	Rings
2	23E	A	601	-	-	0/24/57/57	0/6/7/7
3	SO4	A	602	-	-	0/0/0/0	0/0/0/0
3	SO4	A	603	-	-	0/0/0/0	0/0/0/0
3	SO4	A	604	-	-	0/0/0/0	0/0/0/0
3	SO4	A	605	-	-	0/0/0/0	0/0/0/0
3	SO4	A	606	-	-	0/0/0/0	0/0/0/0
2	23E	B	601	-	-	0/24/57/57	0/6/7/7
4	8XS	B	602	-	-	0/12/18/18	0/3/4/4
3	SO4	B	603	-	-	0/0/0/0	0/0/0/0
3	SO4	B	604	-	-	0/0/0/0	0/0/0/0

*Continued on next page...*

*Continued from previous page...*

Mol	Type	Chain	Res	Link	Chirals	Torsions	Rings
3	SO4	B	605	-	-	0/0/0/0	0/0/0/0
3	SO4	B	606	-	-	0/0/0/0	0/0/0/0
3	SO4	B	607	-	-	0/0/0/0	0/0/0/0
5	GOL	B	608	-	-	0/4/4/4	0/0/0/0

All (3) bond length outliers are listed below:

Mol	Chain	Res	Type	Atoms	Z	Observed(Å)	Ideal(Å)
4	B	602	8XS	C1-C6	-2.01	1.47	1.51
2	A	601	23E	C29-C28	3.93	1.44	1.40
2	B	601	23E	C29-C28	4.01	1.45	1.40

All (4) bond angle outliers are listed below:

Mol	Chain	Res	Type	Atoms	Z	Observed(°)	Ideal(°)
2	A	601	23E	C46-C44-N26	-2.47	103.25	108.89
2	B	601	23E	C32-C43-N45	2.16	123.54	120.79
2	A	601	23E	C32-C43-N45	2.21	123.60	120.79
4	B	602	8XS	C1-C2-C10	4.99	134.21	127.16

There are no chirality outliers.

There are no torsion outliers.

There are no ring outliers.

No monomer is involved in short contacts.

## 5.7 Other polymers [i](#)

There are no such residues in this entry.

## 5.8 Polymer linkage issues [i](#)

There are no chain breaks in this entry.

## 6 Fit of model and data ⓘ

### 6.1 Protein, DNA and RNA chains ⓘ

In the following table, the column labelled ‘#RSRZ> 2’ contains the number (and percentage) of RSRZ outliers, followed by percent RSRZ outliers for the chain as percentile scores relative to all X-ray entries and entries of similar resolution. The OWAB column contains the minimum, median, 95<sup>th</sup> percentile and maximum values of the occupancy-weighted average B-factor per residue. The column labelled ‘Q< 0.9’ lists the number of (and percentage) of residues with an average occupancy less than 0.9.

Mol	Chain	Analysed	<RSRZ>	#RSRZ>2	OWAB(Å <sup>2</sup> )	Q<0.9
1	A	551/574 (95%)	-0.09	16 (2%) 52 56	14, 27, 56, 101	0
1	B	545/574 (94%)	0.05	32 (5%) 23 25	16, 29, 67, 103	0
All	All	1096/1148 (95%)	-0.02	48 (4%) 35 38	14, 28, 60, 103	0

All (48) RSRZ outliers are listed below:

Mol	Chain	Res	Type	RSRZ
1	A	149	PRO	8.7
1	A	150	GLU	8.6
1	B	149	PRO	8.6
1	A	152	GLY	7.3
1	B	567	ALA	6.9
1	B	543	SER	5.5
1	B	150	GLU	5.4
1	B	151	LYS	5.3
1	A	148	GLN	5.2
1	A	147	VAL	5.1
1	B	565	SER	5.0
1	B	544	GLN	5.0
1	B	564	LEU	4.9
1	A	153	GLY	4.9
1	B	152	GLY	4.6
1	B	542	ALA	4.5
1	B	153	GLY	4.4
1	B	14	CYS	4.4
1	B	148	GLN	4.2
1	B	566	ARG	4.2
1	B	404	PRO	4.0
1	B	541	ALA	3.7
1	B	540	PRO	3.7
1	B	37	VAL	3.7

*Continued on next page...*



*Continued from previous page...*

Mol	Chain	Res	Type	RSRZ
1	A	43	ARG	3.6
1	A	567	ALA	3.4
1	A	151	LYS	3.3
1	A	568	ARG	3.1
1	A	41	THR	3.1
1	A	270	LYS	3.0
1	B	539	ILE	3.0
1	B	147	VAL	3.0
1	B	556	SER	2.9
1	A	37	VAL	2.8
1	B	43	ARG	2.8
1	B	545	LEU	2.8
1	B	402	HIS	2.6
1	B	38	TYR	2.6
1	A	154	ARG	2.6
1	B	405	VAL	2.6
1	B	41	THR	2.4
1	B	47	LEU	2.4
1	B	546	ASP	2.3
1	A	569	PRO	2.3
1	B	154	ARG	2.3
1	B	156	PRO	2.2
1	A	13	PRO	2.0
1	B	113	SER	2.0

## 6.2 Non-standard residues in protein, DNA, RNA chains [i](#)

There are no non-standard protein/DNA/RNA residues in this entry.

## 6.3 Carbohydrates [i](#)

There are no carbohydrates in this entry.

## 6.4 Ligands [i](#)

In the following table, the Atoms column lists the number of modelled atoms in the group and the number defined in the chemical component dictionary. LLDF column lists the quality of electron density of the group with respect to its neighbouring residues in protein, DNA or RNA chains. The B-factors column lists the minimum, median, 95<sup>th</sup> percentile and maximum values of B factors of atoms in the group. The column labelled 'Q < 0.9' lists the number of atoms with occupancy less than 0.9.

Mol	Type	Chain	Res	Atoms	RSCC	RSR	LLDF	B-factors( $\text{\AA}^2$ )	Q<0.9
4	8XS	B	602	29/29	0.85	0.27	4.39	17,52,65,68	16
5	GOL	B	608	6/6	0.80	0.22	2.17	49,50,52,52	0
3	SO4	B	607	5/5	0.90	0.22	0.69	83,84,85,87	0
3	SO4	A	606	5/5	0.96	0.15	0.33	73,74,75,77	0
2	23E	B	601	47/47	0.95	0.15	0.06	16,24,38,45	38
2	23E	A	601	47/47	0.95	0.13	-0.34	14,20,48,60	38
3	SO4	A	604	5/5	0.99	0.10	-0.38	44,45,47,47	0
3	SO4	A	603	5/5	0.95	0.13	-0.81	63,65,67,67	0
3	SO4	A	602	5/5	0.97	0.16	-	61,63,64,66	0
3	SO4	B	603	5/5	0.91	0.21	-	85,87,88,88	0
3	SO4	B	606	5/5	0.87	0.21	-	95,96,97,98	0
3	SO4	B	605	5/5	0.96	0.17	-	62,64,65,67	0
3	SO4	A	605	5/5	0.98	0.18	-	56,58,59,59	0
3	SO4	B	604	5/5	0.97	0.20	-	62,63,64,65	0

## 6.5 Other polymers [i](#)

There are no such residues in this entry.