



# Full wwPDB X-ray Structure Validation Report ⓘ

Oct 12, 2017 – 04:51 PM EDT

PDB ID : 2Q0C  
Title : Terminal uridylyl transferase 4 from Trypanosoma brucei with bound CTP  
Authors : Stagno, J.; Luecke, H.  
Deposited on : unknown  
Resolution : 2.20 Å(reported)

This is a Full wwPDB X-ray Structure Validation Report for a publicly released PDB entry.

We welcome your comments at [validation@mail.wwpdb.org](mailto:validation@mail.wwpdb.org)

A user guide is available at

<http://wwpdb.org/validation/2016/XrayValidationReportHelp>

with specific help available everywhere you see the ⓘ symbol.

---

The following versions of software and data (see [references ⓘ](#)) were used in the production of this report:

MolProbity : 4.02b-467  
Mogul : 1.7.2 (RC1), CSD as538be (2017)  
Xtriage (Phenix) : 1.9-1692  
EDS : rb-20030345  
Percentile statistics : 20161228.v01 (using entries in the PDB archive December 28th 2016)  
Refmac : 5.8.0135  
CCP4 : 6.5.0  
Ideal geometry (proteins) : Engh & Huber (2001)  
Ideal geometry (DNA, RNA) : Parkinson et al. (1996)  
Validation Pipeline (wwPDB-VP) : rb-20030345

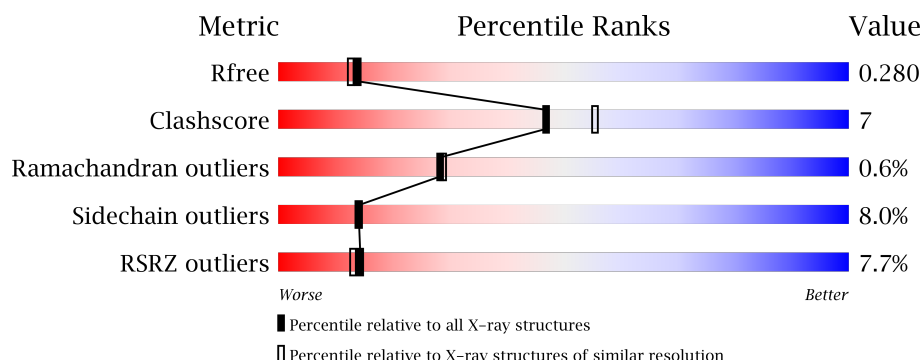
# 1 Overall quality at a glance

The following experimental techniques were used to determine the structure:

## *X-RAY DIFFRACTION*

The reported resolution of this entry is 2.20 Å.

Percentile scores (ranging between 0-100) for global validation metrics of the entry are shown in the following graphic. The table shows the number of entries on which the scores are based.



Metric	Whole archive (#Entries)	Similar resolution (#Entries, resolution range(Å))
$R_{free}$	100719	4002 (2.20-2.20)
Clashscore	112137	4730 (2.20-2.20)
Ramachandran outliers	110173	4656 (2.20-2.20)
Sidechain outliers	110143	4657 (2.20-2.20)
RSRZ outliers	101464	4033 (2.20-2.20)

The table below summarises the geometric issues observed across the polymeric chains and their fit to the electron density. The red, orange, yellow and green segments on the lower bar indicate the fraction of residues that contain outliers for  $\geq 3$ , 2, 1 and 0 types of geometric quality criteria. A grey segment represents the fraction of residues that are not modelled. The numeric value for each fraction is indicated below the corresponding segment, with a dot representing fractions  $\leq 5\%$ . The upper red bar (where present) indicates the fraction of residues that have poor fit to the electron density. The numeric value is given above the bar.

Mol	Chain	Length	Quality of chain
1	A	353	<div> <div>2%</div> <div>76%</div> <div>13%</div> <div>7%</div> </div>
1	B	353	<div> <div>12%</div> <div>66%</div> <div>19%</div> <div>12%</div> </div>

## 2 Entry composition

There are 4 unique types of molecules in this entry. The entry contains 5368 atoms, of which 0 are hydrogens and 0 are deuteriums.

In the tables below, the ZeroOcc column contains the number of atoms modelled with zero occupancy, the AltConf column contains the number of residues with at least one atom in alternate conformation and the Trace column contains the number of residues modelled with at most 2 atoms.

- Molecule 1 is a protein called RNA uridylyl transferase.

Mol	Chain	Residues	Atoms					ZeroOcc	AltConf	Trace
1	A	327	Total	C	N	O	S	0	0	0
			2610	1659	467	477	7			
1	B	311	Total	C	N	O	S	0	0	0
			2498	1594	445	452	7			

There are 40 discrepancies between the modelled and reference sequences:

Chain	Residue	Modelled	Actual	Comment	Reference
A	-19	MET	-	CLONING ARTIFACT	UNP Q381M1
A	-18	GLY	-	CLONING ARTIFACT	UNP Q381M1
A	-17	SER	-	CLONING ARTIFACT	UNP Q381M1
A	-16	SER	-	CLONING ARTIFACT	UNP Q381M1
A	-15	HIS	-	EXPRESSION TAG	UNP Q381M1
A	-14	HIS	-	EXPRESSION TAG	UNP Q381M1
A	-13	HIS	-	EXPRESSION TAG	UNP Q381M1
A	-12	HIS	-	EXPRESSION TAG	UNP Q381M1
A	-11	HIS	-	EXPRESSION TAG	UNP Q381M1
A	-10	HIS	-	EXPRESSION TAG	UNP Q381M1
A	-9	SER	-	CLONING ARTIFACT	UNP Q381M1
A	-8	SER	-	CLONING ARTIFACT	UNP Q381M1
A	-7	GLY	-	CLONING ARTIFACT	UNP Q381M1
A	-6	LEU	-	CLONING ARTIFACT	UNP Q381M1
A	-5	VAL	-	CLONING ARTIFACT	UNP Q381M1
A	-4	PRO	-	CLONING ARTIFACT	UNP Q381M1
A	-3	ARG	-	CLONING ARTIFACT	UNP Q381M1
A	-2	GLY	-	CLONING ARTIFACT	UNP Q381M1
A	-1	SER	-	CLONING ARTIFACT	UNP Q381M1
A	0	HIS	-	CLONING ARTIFACT	UNP Q381M1
B	-19	MET	-	CLONING ARTIFACT	UNP Q381M1
B	-18	GLY	-	CLONING ARTIFACT	UNP Q381M1
B	-17	SER	-	CLONING ARTIFACT	UNP Q381M1
B	-16	SER	-	CLONING ARTIFACT	UNP Q381M1
B	-15	HIS	-	EXPRESSION TAG	UNP Q381M1

*Continued on next page...*

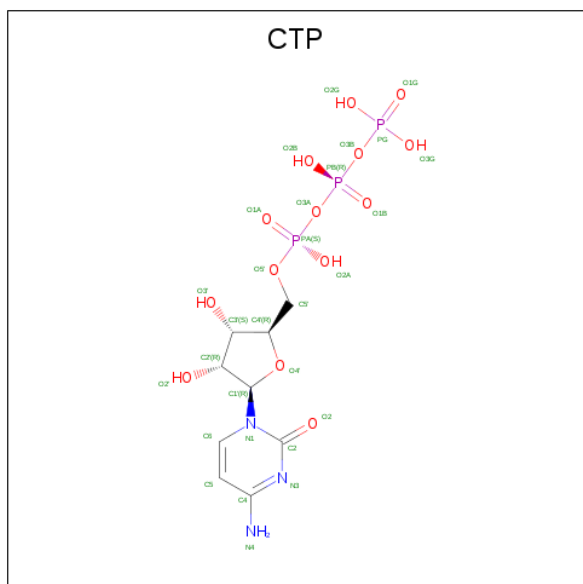
Continued from previous page...

Chain	Residue	Modelled	Actual	Comment	Reference
B	-14	HIS	-	EXPRESSION TAG	UNP Q381M1
B	-13	HIS	-	EXPRESSION TAG	UNP Q381M1
B	-12	HIS	-	EXPRESSION TAG	UNP Q381M1
B	-11	HIS	-	EXPRESSION TAG	UNP Q381M1
B	-10	HIS	-	EXPRESSION TAG	UNP Q381M1
B	-9	SER	-	CLONING ARTIFACT	UNP Q381M1
B	-8	SER	-	CLONING ARTIFACT	UNP Q381M1
B	-7	GLY	-	CLONING ARTIFACT	UNP Q381M1
B	-6	LEU	-	CLONING ARTIFACT	UNP Q381M1
B	-5	VAL	-	CLONING ARTIFACT	UNP Q381M1
B	-4	PRO	-	CLONING ARTIFACT	UNP Q381M1
B	-3	ARG	-	CLONING ARTIFACT	UNP Q381M1
B	-2	GLY	-	CLONING ARTIFACT	UNP Q381M1
B	-1	SER	-	CLONING ARTIFACT	UNP Q381M1
B	0	HIS	-	CLONING ARTIFACT	UNP Q381M1

- Molecule 2 is MAGNESIUM ION (three-letter code: MG) (formula: Mg).

Mol	Chain	Residues	Atoms	ZeroOcc	AltConf
2	A	1	Total Mg 1 1	0	0

- Molecule 3 is CYTIDINE-5'-TRIPHOSPHATE (three-letter code: CTP) (formula:  $C_9H_{16}N_3O_{14}P_3$ ).



Mol	Chain	Residues	Atoms					ZeroOcc	AltConf
3	A	1	Total	C	N	O	P	0	0
			29	9	3	14	3		

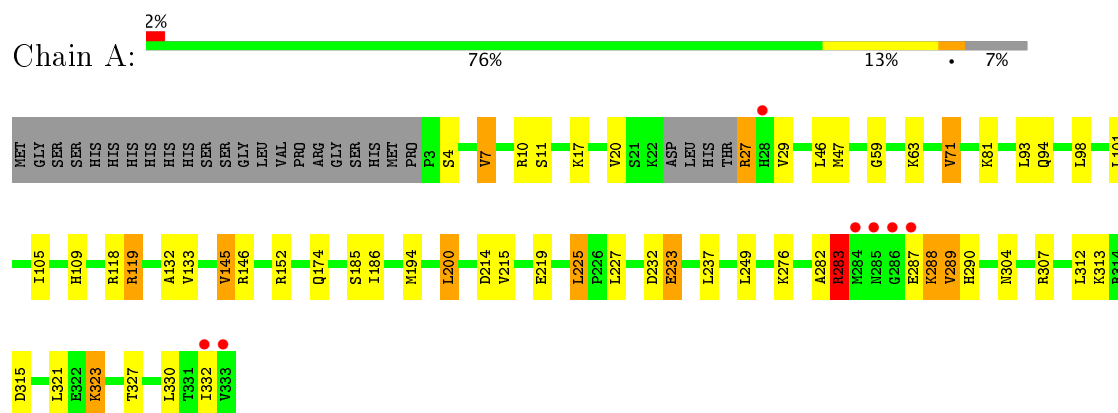
- Molecule 4 is water.

Mol	Chain	Residues	Atoms		ZeroOcc	AltConf
4	A	151	Total	O	0	0
			151	151		
4	B	79	Total	O	0	0
			79	79		

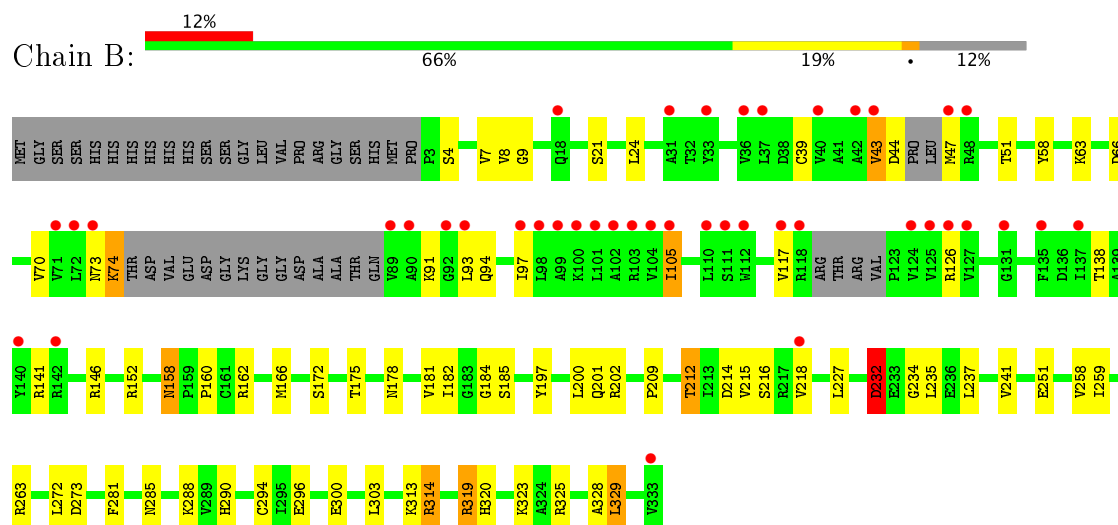
### 3 Residue-property plots [i](#)

These plots are drawn for all protein, RNA and DNA chains in the entry. The first graphic for a chain summarises the proportions of the various outlier classes displayed in the second graphic. The second graphic shows the sequence view annotated by issues in geometry and electron density. Residues are color-coded according to the number of geometric quality criteria for which they contain at least one outlier: green = 0, yellow = 1, orange = 2 and red = 3 or more. A red dot above a residue indicates a poor fit to the electron density ( $RSRZ > 2$ ). Stretches of 2 or more consecutive residues without any outlier are shown as a green connector. Residues present in the sample, but not in the model, are shown in grey.

- Molecule 1: RNA uridylyl transferase



- Molecule 1: RNA uridylyl transferase



## 4 Data and refinement statistics

Property	Value	Source
Space group	P 1 21 1	Depositor
Cell constants a, b, c, $\alpha$ , $\beta$ , $\gamma$	81.17Å 42.16Å 106.81Å 90.00° 93.66° 90.00°	Depositor
Resolution (Å)	45.88 – 2.20 43.27 – 2.20	Depositor EDS
% Data completeness (in resolution range)	98.2 (45.88-2.20) 98.2 (43.27-2.20)	Depositor EDS
$R_{merge}$	0.11	Depositor
$R_{sym}$	(Not available)	Depositor
$\langle I/\sigma(I) \rangle$ <sup>1</sup>	1.97 (at 2.20Å)	Xtriage
Refinement program	REFMAC	Depositor
R, $R_{free}$	0.232 , 0.281 0.231 , 0.280	Depositor DCC
$R_{free}$ test set	1883 reflections (5.42%)	DCC
Wilson B-factor (Å <sup>2</sup> )	33.1	Xtriage
Anisotropy	0.160	Xtriage
Bulk solvent $k_{sol}$ (e/Å <sup>3</sup> ), $B_{sol}$ (Å <sup>2</sup> )	0.34 , 49.8	EDS
L-test for twinning <sup>2</sup>	$\langle  L  \rangle = 0.50$ , $\langle L^2 \rangle = 0.34$	Xtriage
Estimated twinning fraction	No twinning to report.	Xtriage
$F_o, F_c$ correlation	0.93	EDS
Total number of atoms	5368	wwPDB-VP
Average B, all atoms (Å <sup>2</sup> )	41.0	wwPDB-VP

Xtriage's analysis on translational NCS is as follows: *The largest off-origin peak in the Patterson function is 5.33% of the height of the origin peak. No significant pseudotranslation is detected.*

<sup>1</sup>Intensities estimated from amplitudes.

<sup>2</sup>Theoretical values of  $\langle |L| \rangle$ ,  $\langle L^2 \rangle$  for acentric reflections are 0.5, 0.333 respectively for untwinned datasets, and 0.375, 0.2 for perfectly twinned datasets.

## 5 Model quality [i](#)

### 5.1 Standard geometry [i](#)

Bond lengths and bond angles in the following residue types are not validated in this section: MG, CTP

The Z score for a bond length (or angle) is the number of standard deviations the observed value is removed from the expected value. A bond length (or angle) with  $|Z| > 5$  is considered an outlier worth inspection. RMSZ is the root-mean-square of all Z scores of the bond lengths (or angles).

Mol	Chain	Bond lengths		Bond angles	
		RMSZ	$\# Z  > 5$	RMSZ	$\# Z  > 5$
1	A	0.70	0/2667	0.79	1/3616 (0.0%)
1	B	0.54	0/2553	0.70	0/3458
All	All	0.63	0/5220	0.75	1/7074 (0.0%)

Chiral center outliers are detected by calculating the chiral volume of a chiral center and verifying if the center is modelled as a planar moiety or with the opposite hand. A planarity outlier is detected by checking planarity of atoms in a peptide group, atoms in a mainchain group or atoms of a sidechain that are expected to be planar.

Mol	Chain	#Chirality outliers	#Planarity outliers
1	A	0	1

There are no bond length outliers.

All (1) bond angle outliers are listed below:

Mol	Chain	Res	Type	Atoms	Z	Observed( $^{\circ}$ )	Ideal( $^{\circ}$ )
1	A	200	LEU	CA-CB-CG	5.71	128.44	115.30

There are no chirality outliers.

All (1) planarity outliers are listed below:

Mol	Chain	Res	Type	Group
1	A	132	ALA	Peptide

### 5.2 Too-close contacts [i](#)

In the following table, the Non-H and H(model) columns list the number of non-hydrogen atoms and hydrogen atoms in the chain respectively. The H(added) column lists the number of hydrogen atoms added and optimized by MolProbity. The Clashes column lists the number of clashes within



the asymmetric unit, whereas Symm-Clashes lists symmetry related clashes.

Mol	Chain	Non-H	H(model)	H(added)	Clashes	Symm-Clashes
1	A	2610	0	2617	33	0
1	B	2498	0	2504	42	0
2	A	1	0	0	0	0
3	A	29	0	12	0	0
4	A	151	0	0	3	0
4	B	79	0	0	2	0
All	All	5368	0	5133	73	0

The all-atom clashscore is defined as the number of clashes found per 1000 atoms (including hydrogen atoms). The all-atom clashscore for this structure is 7.

All (73) close contacts within the same asymmetric unit are listed below, sorted by their clash magnitude.

Atom-1	Atom-2	Interatomic distance (Å)	Clash overlap (Å)
1:A:283:ARG:HA	1:A:287:GLU:O	1.69	0.92
1:A:27:ARG:HA	1:A:27:ARG:HH11	1.34	0.91
1:A:185:SER:HB3	1:A:313:LYS:HD3	1.63	0.80
1:B:209:PRO:O	1:B:212:THR:HB	1.83	0.78
1:B:215:VAL:HA	1:B:218:VAL:HG12	1.68	0.76
1:B:185:SER:HB3	1:B:313:LYS:HD3	1.73	0.70
1:A:287:GLU:CG	1:A:288:LYS:H	2.06	0.69
1:A:109:HIS:NE2	4:A:631:HOH:O	2.30	0.65
1:A:4:SER:OG	1:A:7:VAL:HG23	1.99	0.63
1:B:232:ASP:HB3	1:B:235:LEU:H	1.65	0.62
1:A:47:MET:HG2	1:A:71:VAL:HG22	1.83	0.61
1:B:117:VAL:HG21	1:B:126:ARG:NH1	2.17	0.59
1:B:117:VAL:HG21	1:B:126:ARG:HH11	1.68	0.59
1:B:197:TYR:O	1:B:201:GLN:HG2	2.04	0.58
1:A:323:LYS:C	4:A:530:HOH:O	2.42	0.58
1:B:178:ASN:O	1:B:184:GLY:HA3	2.04	0.57
1:B:241:VAL:HG11	1:B:329:LEU:CD2	2.35	0.56
1:B:70:VAL:HG23	1:B:138:THR:HG23	1.86	0.56
1:A:282:ALA:HB1	1:A:289:VAL:HG13	1.87	0.55
1:A:118:ARG:CD	1:B:263:ARG:HD2	2.37	0.55
1:A:327:THR:HA	1:A:332:ILE:HG22	1.89	0.54
1:B:43:VAL:O	1:B:44:ASP:HB2	2.07	0.54
1:B:162:ARG:O	1:B:166:MET:HG3	2.09	0.53
1:B:288:LYS:HE3	1:B:290:HIS:NE2	2.26	0.51
1:B:8:VAL:HG22	1:B:328:ALA:HB2	1.91	0.51
1:A:81:LYS:HE2	1:A:214:ASP:HB2	1.93	0.51

*Continued on next page...*

*Continued from previous page...*

Atom-1	Atom-2	Interatomic distance (Å)	Clash overlap (Å)
1:A:312:LEU:O	1:A:315:ASP:HB3	2.12	0.50
1:A:288:LYS:HD2	1:A:290:HIS:CE1	2.47	0.49
1:A:94:GLN:O	1:A:98:LEU:HG	2.14	0.48
1:B:319:ARG:HH12	1:B:323:LYS:HD2	1.77	0.48
1:B:39:CYS:SG	1:B:105:ILE:HG22	2.54	0.48
1:A:152:ARG:NH2	1:A:225:LEU:HD13	2.28	0.48
1:A:27:ARG:HD2	1:A:29:VAL:HB	1.96	0.48
1:A:304:ASN:O	1:A:307:ARG:HB3	2.14	0.48
1:B:202:ARG:NH2	1:B:251:GLU:OE1	2.47	0.47
1:A:101:LEU:O	1:A:105:ILE:HG13	2.14	0.47
1:B:152:ARG:HD2	4:B:406:HOH:O	2.14	0.47
1:B:158:ASN:HD22	1:B:160:PRO:HD2	1.78	0.47
1:B:9:GLY:HA3	1:B:234:GLY:O	2.14	0.47
1:A:118:ARG:HD2	1:B:263:ARG:HD2	1.97	0.47
1:B:241:VAL:HG11	1:B:329:LEU:HD21	1.96	0.47
1:B:314:ARG:HD2	4:B:410:HOH:O	2.13	0.47
1:A:145:VAL:HG22	1:A:215:VAL:HG22	1.96	0.46
1:A:287:GLU:HG2	1:A:288:LYS:H	1.79	0.46
1:A:59:GLY:HA3	1:A:225:LEU:HB2	1.97	0.46
1:B:73:ASN:O	1:B:74:LYS:HB2	2.16	0.46
1:B:259:ILE:HD12	1:B:294:CYS:O	2.17	0.45
1:A:283:ARG:CA	1:A:287:GLU:O	2.54	0.45
1:B:258:VAL:HG21	1:B:272:LEU:HD12	1.99	0.45
1:A:10:ARG:HG2	1:A:233:GLU:HG2	1.97	0.44
1:B:4:SER:HB3	1:B:7:VAL:HB	1.99	0.44
1:B:175:THR:OG1	1:B:320:HIS:ND1	2.50	0.43
1:B:241:VAL:CG1	1:B:329:LEU:HD21	2.48	0.43
1:B:44:ASP:HB3	1:B:47:MET:HB2	2.01	0.43
1:A:186:ILE:HD13	1:A:194:MET:HE1	2.00	0.43
1:A:287:GLU:CG	1:A:288:LYS:N	2.78	0.43
1:B:43:VAL:O	1:B:44:ASP:CB	2.67	0.43
1:B:63:LYS:HA	1:B:63:LYS:HD2	1.83	0.42
1:A:174:GLN:HB3	1:A:330:LEU:HD12	2.02	0.42
1:A:186:ILE:HG21	1:A:194:MET:CE	2.48	0.42
1:B:181:VAL:HG12	1:B:182:ILE:O	2.20	0.42
1:B:263:ARG:NH2	1:B:296:GLU:OE1	2.52	0.42
1:B:58:TYR:O	1:B:162:ARG:NH1	2.53	0.42
1:A:146:ARG:HG3	1:A:215:VAL:HG23	2.02	0.42
1:B:172:SER:HA	1:B:175:THR:HG22	2.01	0.41
1:B:232:ASP:HB3	1:B:235:LEU:N	2.32	0.41
1:A:219:GLU:HG3	4:A:596:HOH:O	2.19	0.41

*Continued on next page...*

*Continued from previous page...*

Atom-1	Atom-2	Interatomic distance (Å)	Clash overlap (Å)
1:B:300:GLU:HG3	1:B:303:LEU:HD22	2.03	0.41
1:B:214:ASP:OD1	1:B:216:SER:OG	2.36	0.40
1:A:249:LEU:HG	1:A:321:LEU:HB3	2.03	0.40
1:B:232:ASP:C	1:B:234:GLY:H	2.25	0.40
1:B:281:PHE:O	1:B:285:ASN:HB2	2.22	0.40
1:A:119:ARG:H	1:A:119:ARG:HG3	1.58	0.40

There are no symmetry-related clashes.

## 5.3 Torsion angles [i](#)

### 5.3.1 Protein backbone [i](#)

In the following table, the Percentiles column shows the percent Ramachandran outliers of the chain as a percentile score with respect to all X-ray entries followed by that with respect to entries of similar resolution.

The Analysed column shows the number of residues for which the backbone conformation was analysed, and the total number of residues.

Mol	Chain	Analysed	Favoured	Allowed	Outliers	Percentiles	
1	A	323/353 (92%)	306 (95%)	15 (5%)	2 (1%)	28	29
1	B	303/353 (86%)	287 (95%)	14 (5%)	2 (1%)	25	24
All	All	626/706 (89%)	593 (95%)	29 (5%)	4 (1%)	28	29

All (4) Ramachandran outliers are listed below:

Mol	Chain	Res	Type
1	A	232	ASP
1	A	283	ARG
1	B	97	ILE
1	B	232	ASP

### 5.3.2 Protein sidechains [i](#)

In the following table, the Percentiles column shows the percent sidechain outliers of the chain as a percentile score with respect to all X-ray entries followed by that with respect to entries of similar resolution.

The Analysed column shows the number of residues for which the sidechain conformation was

analysed, and the total number of residues.

Mol	Chain	Analysed	Rotameric	Outliers	Percentiles	
1	A	286/309 (93%)	264 (92%)	22 (8%)	15	15
1	B	275/309 (89%)	252 (92%)	23 (8%)	13	12
All	All	561/618 (91%)	516 (92%)	45 (8%)	14	14

All (45) residues with a non-rotameric sidechain are listed below:

Mol	Chain	Res	Type
1	A	7	VAL
1	A	11	SER
1	A	17	LYS
1	A	20	VAL
1	A	27	ARG
1	A	46	LEU
1	A	63	LYS
1	A	71	VAL
1	A	93	LEU
1	A	119	ARG
1	A	133	VAL
1	A	145	VAL
1	A	200	LEU
1	A	225	LEU
1	A	227	LEU
1	A	233	GLU
1	A	237	LEU
1	A	276	LYS
1	A	283	ARG
1	A	288	LYS
1	A	289	VAL
1	A	323	LYS
1	B	21	SER
1	B	24	LEU
1	B	43	VAL
1	B	51	THR
1	B	66	ASP
1	B	74	LYS
1	B	91	LYS
1	B	93	LEU
1	B	94	GLN
1	B	105	ILE
1	B	141	ARG
1	B	146	ARG

*Continued on next page...*

*Continued from previous page...*

Mol	Chain	Res	Type
1	B	158	ASN
1	B	200	LEU
1	B	212	THR
1	B	227	LEU
1	B	232	ASP
1	B	237	LEU
1	B	273	ASP
1	B	314	ARG
1	B	319	ARG
1	B	325	ARG
1	B	329	LEU

Some sidechains can be flipped to improve hydrogen bonding and reduce clashes. All (6) such sidechains are listed below:

Mol	Chain	Res	Type
1	A	192	ASN
1	A	308	ASN
1	B	94	GLN
1	B	107	GLN
1	B	158	ASN
1	B	224	HIS

### 5.3.3 RNA [i](#)

There are no RNA molecules in this entry.

## 5.4 Non-standard residues in protein, DNA, RNA chains [i](#)

There are no non-standard protein/DNA/RNA residues in this entry.

### 5.5 Carbohydrates [i](#)

There are no carbohydrates in this entry.

### 5.6 Ligand geometry [i](#)

Of 2 ligands modelled in this entry, 1 is monoatomic - leaving 1 for Mogul analysis.

In the following table, the Counts columns list the number of bonds (or angles) for which Mogul statistics could be retrieved, the number of bonds (or angles) that are observed in the model and the number of bonds (or angles) that are defined in the Chemical Component Dictionary. The Link column lists molecule types, if any, to which the group is linked. The Z score for a bond length (or angle) is the number of standard deviations the observed value is removed from the expected value. A bond length (or angle) with  $|Z| > 2$  is considered an outlier worth inspection. RMSZ is the root-mean-square of all Z scores of the bond lengths (or angles).

Mol	Type	Chain	Res	Link	Bond lengths			Bond angles		
					Counts	RMSZ	$\# Z  > 2$	Counts	RMSZ	$\# Z  > 2$
3	CTP	A	501	2	24,30,30	1.10	2 (8%)	24,47,47	1.16	1 (4%)

In the following table, the Chirals column lists the number of chiral outliers, the number of chiral centers analysed, the number of these observed in the model and the number defined in the Chemical Component Dictionary. Similar counts are reported in the Torsion and Rings columns. '-' means no outliers of that kind were identified.

Mol	Type	Chain	Res	Link	Chirals	Torsions	Rings
3	CTP	A	501	2	-	0/18/38/38	0/2/2/2

All (2) bond length outliers are listed below:

Mol	Chain	Res	Type	Atoms	Z	Observed(Å)	Ideal(Å)
3	A	501	CTP	O4'-C1'	2.82	1.45	1.41
3	A	501	CTP	PG-O3B	3.47	1.65	1.60

All (1) bond angle outliers are listed below:

Mol	Chain	Res	Type	Atoms	Z	Observed(°)	Ideal(°)
3	A	501	CTP	O4'-C1'-N1	2.78	113.66	108.08

There are no chirality outliers.

There are no torsion outliers.

There are no ring outliers.

No monomer is involved in short contacts.

## 5.7 Other polymers ⓘ

There are no such residues in this entry.

## 5.8 Polymer linkage issues ⓘ

There are no chain breaks in this entry.

## 6 Fit of model and data ⓘ

### 6.1 Protein, DNA and RNA chains ⓘ

In the following table, the column labelled ‘#RSRZ> 2’ contains the number (and percentage) of RSRZ outliers, followed by percent RSRZ outliers for the chain as percentile scores relative to all X-ray entries and entries of similar resolution. The OWAB column contains the minimum, median, 95<sup>th</sup> percentile and maximum values of the occupancy-weighted average B-factor per residue. The column labelled ‘Q< 0.9’ lists the number of (and percentage) of residues with an average occupancy less than 0.9.

Mol	Chain	Analysed	<RSRZ>	#RSRZ>2	OWAB(Å <sup>2</sup> )	Q<0.9
1	A	327/353 (92%)	0.00	7 (2%) 64 61	16, 31, 55, 74	0
1	B	311/353 (88%)	0.50	42 (13%) 3 3	18, 46, 90, 93	0
All	All	638/706 (90%)	0.24	49 (7%) 14 13	16, 36, 78, 93	0

All (49) RSRZ outliers are listed below:

Mol	Chain	Res	Type	RSRZ
1	B	124	VAL	7.8
1	B	105	ILE	5.4
1	B	90	ALA	4.9
1	B	43	VAL	4.3
1	A	284	MET	4.1
1	A	333	VAL	4.0
1	B	103	ARG	4.0
1	A	286	GLY	3.6
1	B	135	PHE	3.5
1	B	110	LEU	3.5
1	B	125	VAL	3.5
1	B	333	VAL	3.5
1	B	89	VAL	3.4
1	B	131	GLY	3.4
1	B	127	VAL	3.4
1	B	117	VAL	3.4
1	B	72	LEU	3.3
1	B	99	ALA	3.3
1	B	126	ARG	3.2
1	B	47	MET	3.1
1	B	93	LEU	3.1
1	A	285	ASN	3.0
1	B	98	LEU	2.8
1	A	332	ILE	2.8

*Continued on next page...*



*Continued from previous page...*

Mol	Chain	Res	Type	RSRZ
1	B	31	ALA	2.8
1	B	33	TYR	2.7
1	B	104	VAL	2.7
1	B	102	ALA	2.7
1	B	100	LYS	2.6
1	B	111	SER	2.5
1	B	137	ILE	2.5
1	B	101	LEU	2.4
1	B	37	LEU	2.4
1	B	97	ILE	2.4
1	A	287	GLU	2.4
1	B	92	GLY	2.4
1	B	140	TYR	2.3
1	B	36	VAL	2.3
1	B	40	VAL	2.3
1	B	71	VAL	2.2
1	B	48	ARG	2.2
1	A	28	HIS	2.2
1	B	118	ARG	2.2
1	B	112	TRP	2.1
1	B	218	VAL	2.1
1	B	142	ARG	2.1
1	B	42	ALA	2.1
1	B	73	ASN	2.0
1	B	18	GLN	2.0

## 6.2 Non-standard residues in protein, DNA, RNA chains ⓘ

There are no non-standard protein/DNA/RNA residues in this entry.

## 6.3 Carbohydrates ⓘ

There are no carbohydrates in this entry.

## 6.4 Ligands ⓘ

In the following table, the Atoms column lists the number of modelled atoms in the group and the number defined in the chemical component dictionary. LLDF column lists the quality of electron density of the group with respect to its neighbouring residues in protein, DNA or RNA chains. The B-factors column lists the minimum, median, 95<sup>th</sup> percentile and maximum values of B factors

of atoms in the group. The column labelled 'Q< 0.9' lists the number of atoms with occupancy less than 0.9.

Mol	Type	Chain	Res	Atoms	RSCC	RSR	LLDF	B-factors( $\text{\AA}^2$ )	Q<0.9
3	CTP	A	501	29/29	0.97	0.10	-1.31	23,27,31,32	0
2	MG	A	401	1/1	0.96	0.12	-	15,15,15,15	0

## 6.5 Other polymers [i](#)

There are no such residues in this entry.