



# Full wwPDB X-ray Structure Validation Report ⓘ

Feb 13, 2017 – 03:21 pm GMT

PDB ID : 4Q1E  
Title : Human dCK C4S-S74E mutant in complex with UDP and the inhibitor 10 {2-[(1R/S)-1-{2-[3-(2-fluoroethoxy)-4-methoxyphenyl]-5-methyl-1,3-thiazol-4-yl}ethyl]sulfanyl}pyrimidine-4,6-diamine}  
Authors : Nomme, J.; Lavie, A.  
Deposited on : 2014-04-03  
Resolution : 1.85 Å(reported)

This is a Full wwPDB X-ray Structure Validation Report for a publicly released PDB entry.

We welcome your comments at [validation@mail.wwpdb.org](mailto:validation@mail.wwpdb.org)

A user guide is available at

<http://wwpdb.org/validation/2016/XrayValidationReportHelp>

with specific help available everywhere you see the ⓘ symbol.

---

The following versions of software and data (see [references ⓘ](#)) were used in the production of this report:

MolProbity : 4.02b-467  
Mogul : 1.7.2 (RC1), CSD as538be (2017)  
Xtriage (Phenix) : 1.9-1692  
EDS : trunk28620  
Percentile statistics : 20161228.v01 (using entries in the PDB archive December 28th 2016)  
Refmac : 5.8.0135  
CCP4 : 6.5.0  
Ideal geometry (proteins) : Engh & Huber (2001)  
Ideal geometry (DNA, RNA) : Parkinson et al. (1996)  
Validation Pipeline (wwPDB-VP) : recalc28949

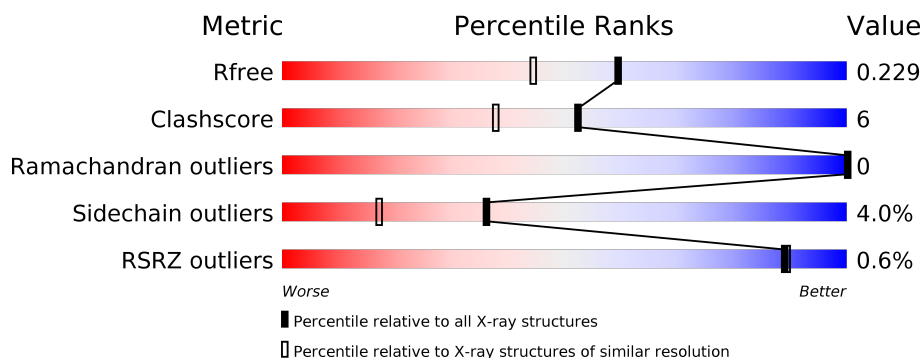
# 1 Overall quality at a glance

The following experimental techniques were used to determine the structure:

## *X-RAY DIFFRACTION*

The reported resolution of this entry is 1.85 Å.

Percentile scores (ranging between 0-100) for global validation metrics of the entry are shown in the following graphic. The table shows the number of entries on which the scores are based.



Metric	Whole archive (#Entries)	Similar resolution (#Entries, resolution range(Å))
$R_{free}$	100719	1923 (1.86-1.86)
Clashscore	112137	2083 (1.86-1.86)
Ramachandran outliers	110173	2060 (1.86-1.86)
Sidechain outliers	110143	2060 (1.86-1.86)
RSRZ outliers	101464	1932 (1.86-1.86)

The table below summarises the geometric issues observed across the polymeric chains and their fit to the electron density. The red, orange, yellow and green segments on the lower bar indicate the fraction of residues that contain outliers for  $\geq 3$ , 2, 1 and 0 types of geometric quality criteria. A grey segment represents the fraction of residues that are not modelled. The numeric value for each fraction is indicated below the corresponding segment, with a dot representing fractions  $\leq 5\%$ . The upper red bar (where present) indicates the fraction of residues that have poor fit to the electron density. The numeric value is given above the bar.

Mol	Chain	Length	Quality of chain
1	A	280	
1	B	280	

The following table lists non-polymeric compounds, carbohydrate monomers and non-standard residues in protein, DNA, RNA chains that are outliers for geometric or electron-density-fit criteria:

Mol	Type	Chain	Res	Chirality	Geometry	Clashes	Electron density
3	2Y7	B	302	-	-	-	X

## 2 Entry composition

There are 5 unique types of molecules in this entry. The entry contains 4160 atoms, of which 0 are hydrogens and 0 are deuteriums.

In the tables below, the ZeroOcc column contains the number of atoms modelled with zero occupancy, the AltConf column contains the number of residues with at least one atom in alternate conformation and the Trace column contains the number of residues modelled with at most 2 atoms.

- Molecule 1 is a protein called Deoxycytidine kinase.

Mol	Chain	Residues	Atoms					ZeroOcc	AltConf	Trace
1	A	231	Total	C	N	O	S	0	4	0
			1905	1221	318	359	7			
1	B	231	Total	C	N	O	S	0	4	0
			1904	1221	317	359	7			

There are 50 discrepancies between the modelled and reference sequences:

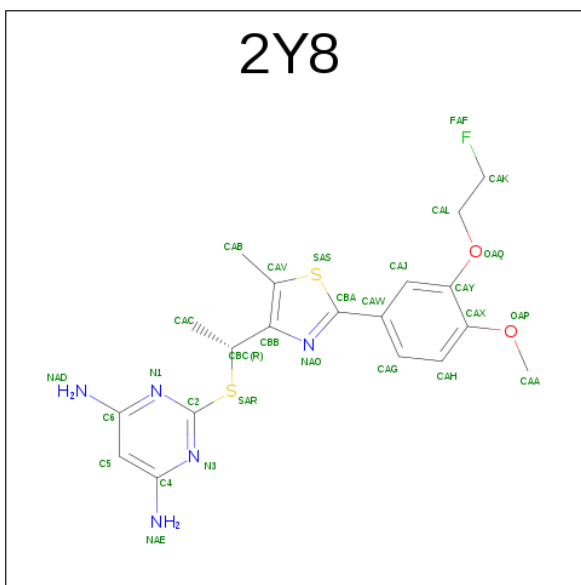
Chain	Residue	Modelled	Actual	Comment	Reference
A	-19	MET	-	EXPRESSION TAG	UNP P27707
A	-18	GLY	-	EXPRESSION TAG	UNP P27707
A	-17	SER	-	EXPRESSION TAG	UNP P27707
A	-16	SER	-	EXPRESSION TAG	UNP P27707
A	-15	HIS	-	EXPRESSION TAG	UNP P27707
A	-14	HIS	-	EXPRESSION TAG	UNP P27707
A	-13	HIS	-	EXPRESSION TAG	UNP P27707
A	-12	HIS	-	EXPRESSION TAG	UNP P27707
A	-11	HIS	-	EXPRESSION TAG	UNP P27707
A	-10	HIS	-	EXPRESSION TAG	UNP P27707
A	-9	SER	-	EXPRESSION TAG	UNP P27707
A	-8	SER	-	EXPRESSION TAG	UNP P27707
A	-7	GLY	-	EXPRESSION TAG	UNP P27707
A	-6	LEU	-	EXPRESSION TAG	UNP P27707
A	-5	VAL	-	EXPRESSION TAG	UNP P27707
A	-4	PRO	-	EXPRESSION TAG	UNP P27707
A	-3	ARG	-	EXPRESSION TAG	UNP P27707
A	-2	GLY	-	EXPRESSION TAG	UNP P27707
A	-1	SER	-	EXPRESSION TAG	UNP P27707
A	0	HIS	-	EXPRESSION TAG	UNP P27707
A	9	SER	CYS	ENGINEERED MUTATION	UNP P27707
A	45	SER	CYS	ENGINEERED MUTATION	UNP P27707
A	59	SER	CYS	ENGINEERED MUTATION	UNP P27707
A	74	GLU	SER	ENGINEERED MUTATION	UNP P27707
A	146	SER	CYS	ENGINEERED MUTATION	UNP P27707

*Continued on next page...*

*Continued from previous page...*

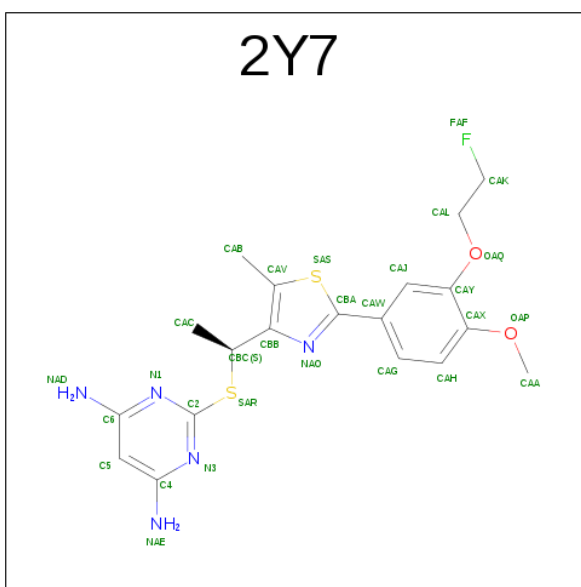
Chain	Residue	Modelled	Actual	Comment	Reference
B	-19	MET	-	EXPRESSION TAG	UNP P27707
B	-18	GLY	-	EXPRESSION TAG	UNP P27707
B	-17	SER	-	EXPRESSION TAG	UNP P27707
B	-16	SER	-	EXPRESSION TAG	UNP P27707
B	-15	HIS	-	EXPRESSION TAG	UNP P27707
B	-14	HIS	-	EXPRESSION TAG	UNP P27707
B	-13	HIS	-	EXPRESSION TAG	UNP P27707
B	-12	HIS	-	EXPRESSION TAG	UNP P27707
B	-11	HIS	-	EXPRESSION TAG	UNP P27707
B	-10	HIS	-	EXPRESSION TAG	UNP P27707
B	-9	SER	-	EXPRESSION TAG	UNP P27707
B	-8	SER	-	EXPRESSION TAG	UNP P27707
B	-7	GLY	-	EXPRESSION TAG	UNP P27707
B	-6	LEU	-	EXPRESSION TAG	UNP P27707
B	-5	VAL	-	EXPRESSION TAG	UNP P27707
B	-4	PRO	-	EXPRESSION TAG	UNP P27707
B	-3	ARG	-	EXPRESSION TAG	UNP P27707
B	-2	GLY	-	EXPRESSION TAG	UNP P27707
B	-1	SER	-	EXPRESSION TAG	UNP P27707
B	0	HIS	-	EXPRESSION TAG	UNP P27707
B	9	SER	CYS	ENGINEERED MUTATION	UNP P27707
B	45	SER	CYS	ENGINEERED MUTATION	UNP P27707
B	59	SER	CYS	ENGINEERED MUTATION	UNP P27707
B	74	GLU	SER	ENGINEERED MUTATION	UNP P27707
B	146	SER	CYS	ENGINEERED MUTATION	UNP P27707

- Molecule 2 is (R)-2-((1-(2-(3-(2-FLUOROETHOXY)-4-METHOXYPHENYL)-5-METHYLTHIAZOL-4-YL)ETHYL)THIO)PYRIMIDINE-4,6-DIAMINE (three-letter code: 2Y8) (formula: C<sub>19</sub>H<sub>22</sub>FN<sub>5</sub>O<sub>2</sub>S<sub>2</sub>).



Mol	Chain	Residues	Atoms						ZeroOcc	AltConf
2	A	1	Total	C	F	N	O	S	0	0
			29	19	1	5	2	2		
2	B	1	Total	C	F	N	O	S	0	0
			29	19	1	5	2	2		

- Molecule 3 is (S)-2-((1-(2-(3-(2-FLUOROETHOXY)-4-METHOXYPHENYL)-5-METHYLTHIAZOL-4-YL)ETHYL)THIO)PYRIMIDINE-4,6-DIAMINE (three-letter code: 2Y7) (formula: C<sub>19</sub>H<sub>22</sub>FN<sub>5</sub>O<sub>2</sub>S<sub>2</sub>).



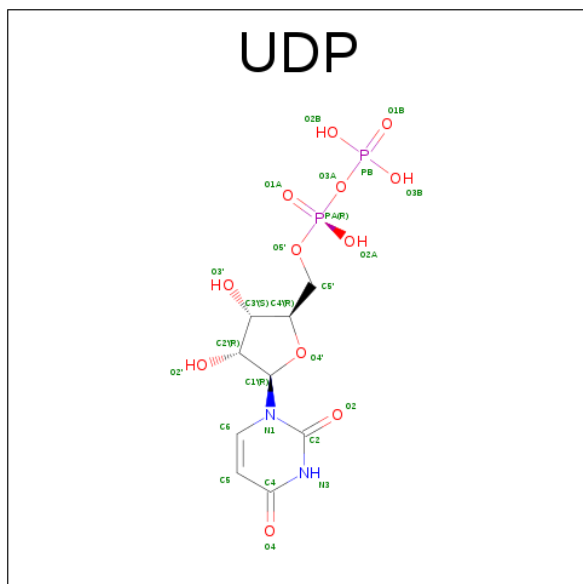
Mol	Chain	Residues	Atoms						ZeroOcc	AltConf
3	A	1	Total	C	F	N	O	S	0	0
			29	19	1	5	2	2		

*Continued on next page...*

Continued from previous page...

Mol	Chain	Residues	Atoms					ZeroOcc	AltConf
3	B	1	Total	C	F	N	O	S	
			29	19	1	5	2	2	
								0	0

- Molecule 4 is URIDINE-5'-DIPHOSPHATE (three-letter code: UDP) (formula:  $C_9H_{14}N_2O_{12}P_2$ ).



Mol	Chain	Residues	Atoms					ZeroOcc	AltConf
4	A	1	Total	C	N	O	P		
			25	9	2	12	2	0	0
4	B	1	Total	C	N	O	P		
			25	9	2	12	2	0	0

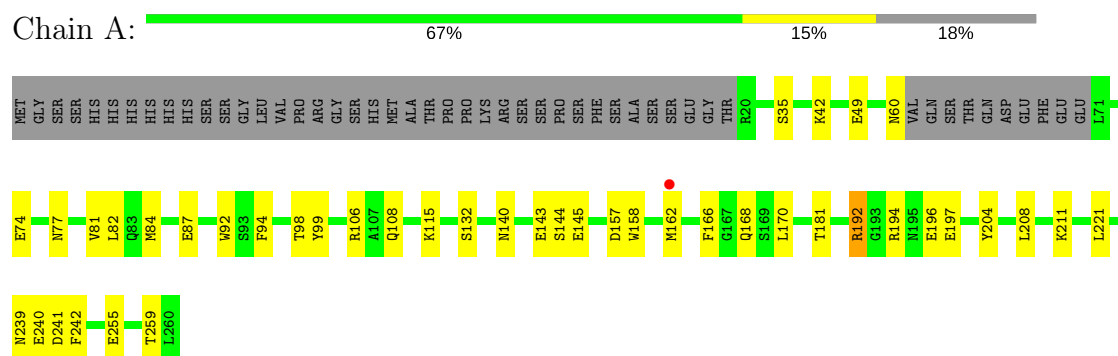
- Molecule 5 is water.

Mol	Chain	Residues	Atoms	ZeroOcc	AltConf
5	A	91	Total O 91 91	0	0
5	B	94	Total O 94 94	0	0

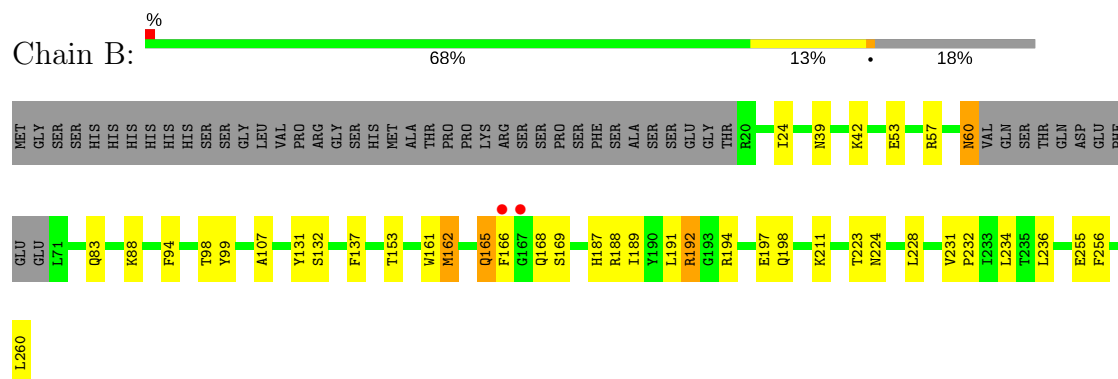
### 3 Residue-property plots [i](#)

These plots are drawn for all protein, RNA and DNA chains in the entry. The first graphic for a chain summarises the proportions of the various outlier classes displayed in the second graphic. The second graphic shows the sequence view annotated by issues in geometry and electron density. Residues are color-coded according to the number of geometric quality criteria for which they contain at least one outlier: green = 0, yellow = 1, orange = 2 and red = 3 or more. A red dot above a residue indicates a poor fit to the electron density ( $RSRZ > 2$ ). Stretches of 2 or more consecutive residues without any outlier are shown as a green connector. Residues present in the sample, but not in the model, are shown in grey.

#### • Molecule 1: Deoxycytidine kinase



#### • Molecule 1: Deoxycytidine kinase





## 4 Data and refinement statistics

Property	Value	Source
Space group	P 41	Depositor
Cell constants a, b, c, $\alpha$ , $\beta$ , $\gamma$	68.74Å 68.74Å 122.21Å 90.00° 90.00° 90.00°	Depositor
Resolution (Å)	27.92 – 1.85 27.92 – 1.85	Depositor EDS
% Data completeness (in resolution range)	95.4 (27.92-1.85) 95.4 (27.92-1.85)	Depositor EDS
$R_{merge}$	(Not available)	Depositor
$R_{sym}$	0.03	Depositor
$\langle I/\sigma(I) \rangle$ <sup>1</sup>	1.65 (at 1.85Å)	Xtriage
Refinement program	REFMAC 5.8.0049	Depositor
R, $R_{free}$	0.174 , 0.218 0.182 , 0.229	Depositor DCC
$R_{free}$ test set	2337 reflections (5.34%)	DCC
Wilson B-factor (Å <sup>2</sup> )	33.4	Xtriage
Anisotropy	0.256	Xtriage
Bulk solvent $k_{sol}$ (e/Å <sup>3</sup> ), $B_{sol}$ (Å <sup>2</sup> )	0.34 , 31.2	EDS
L-test for twinning <sup>2</sup>	$\langle  L  \rangle = 0.50$ , $\langle L^2 \rangle = 0.34$	Xtriage
Estimated twinning fraction	0.487 for h,-k,-l	Xtriage
Reported twinning fraction	0.500 for H, K, L 0.500 for -H, K, -L	Depositor
Outliers	0 of 46958 reflections	Xtriage
$F_o, F_c$ correlation	0.97	EDS
Total number of atoms	4160	wwPDB-VP
Average B, all atoms (Å <sup>2</sup> )	38.0	wwPDB-VP

Xtriage's analysis on translational NCS is as follows: *The largest off-origin peak in the Patterson function is 6.39% of the height of the origin peak. No significant pseudotranslation is detected.*

<sup>1</sup>Intensities estimated from amplitudes.

<sup>2</sup>Theoretical values of  $\langle |L| \rangle$ ,  $\langle L^2 \rangle$  for acentric reflections are 0.5, 0.333 respectively for untwinned datasets, and 0.375, 0.2 for perfectly twinned datasets.

## 5 Model quality [i](#)

### 5.1 Standard geometry [i](#)

Bond lengths and bond angles in the following residue types are not validated in this section: 2Y7, UDP, 2Y8

The Z score for a bond length (or angle) is the number of standard deviations the observed value is removed from the expected value. A bond length (or angle) with  $|Z| > 5$  is considered an outlier worth inspection. RMSZ is the root-mean-square of all Z scores of the bond lengths (or angles).

Mol	Chain	Bond lengths		Bond angles	
		RMSZ	$\# Z  > 5$	RMSZ	$\# Z  > 5$
1	A	0.58	0/1961	0.75	2/2653 (0.1%)
1	B	0.56	0/1961	0.73	0/2654
All	All	0.57	0/3922	0.74	2/5307 (0.0%)

There are no bond length outliers.

All (2) bond angle outliers are listed below:

Mol	Chain	Res	Type	Atoms	Z	Observed(°)	Ideal(°)
1	A	192	ARG	NE-CZ-NH2	-6.70	116.95	120.30
1	A	192	ARG	NE-CZ-NH1	6.53	123.56	120.30

There are no chirality outliers.

There are no planarity outliers.

### 5.2 Too-close contacts [i](#)

In the following table, the Non-H and H(model) columns list the number of non-hydrogen atoms and hydrogen atoms in the chain respectively. The H(added) column lists the number of hydrogen atoms added and optimized by MolProbity. The Clashes column lists the number of clashes within the asymmetric unit, whereas Symm-Clashes lists symmetry related clashes.

Mol	Chain	Non-H	H(model)	H(added)	Clashes	Symm-Clashes
1	A	1905	0	1849	29	1
1	B	1904	0	1836	25	1
2	A	29	0	22	2	0
2	B	29	0	22	2	0
3	A	29	0	22	0	0
3	B	29	0	22	0	0
4	A	25	0	11	1	0

*Continued on next page...*

*Continued from previous page...*

Mol	Chain	Non-H	H(model)	H(added)	Clashes	Symm-Clashes
4	B	25	0	11	1	0
5	A	91	0	0	5	1
5	B	94	0	0	5	1
All	All	4160	0	3795	49	2

The all-atom clashscore is defined as the number of clashes found per 1000 atoms (including hydrogen atoms). The all-atom clashscore for this structure is 6.

All (49) close contacts within the same asymmetric unit are listed below, sorted by their clash magnitude.

Atom-1	Atom-2	Interatomic distance (Å)	Clash overlap (Å)
1:B:57:ARG:NH1	5:B:459:HOH:O	2.05	0.89
1:A:196:GLU:H	1:A:196:GLU:CD	1.85	0.79
1:A:42:LYS:O	5:A:455:HOH:O	2.05	0.74
1:B:107:ALA:O	5:B:438:HOH:O	2.11	0.69
1:A:106:ARG:NH1	5:A:442:HOH:O	2.28	0.66
1:A:143:GLU:OE1	1:A:211:LYS:NZ	2.31	0.64
1:B:165:GLN:O	1:B:168:GLN:HB2	1.99	0.63
1:B:137:PHE:CE1	2:B:301:2Y8:H15	2.37	0.60
1:A:192:ARG:HD3	1:A:194:ARG:HD2	1.85	0.59
1:A:94:PHE:O	1:A:98:THR:HG23	2.03	0.57
1:A:162:MET:SD	1:B:162:MET:SD	3.06	0.54
1:B:169:SER:HA	5:B:479:HOH:O	2.07	0.54
1:B:194:ARG:O	1:B:198:GLN:NE2	2.41	0.54
1:A:144[B]:SER:OG	2:A:301:2Y8:CAK	2.57	0.53
1:B:234:LEU:HD21	1:B:236:LEU:HD21	1.91	0.53
1:B:189:ILE:O	5:B:441:HOH:O	2.19	0.52
1:A:166:PHE:CB	1:B:166:PHE:CZ	2.92	0.52
1:A:106:ARG:HD3	1:B:161:TRP:CD1	2.45	0.51
1:B:94:PHE:O	1:B:98:THR:HG23	2.11	0.50
1:A:108:GLN:HB3	1:A:170:LEU:HD22	1.94	0.50
1:A:166:PHE:CB	1:B:166:PHE:CE1	2.95	0.50
1:B:60:ASN:O	1:B:60:ASN:ND2	2.46	0.49
1:A:74:GLU:HA	1:A:99:TYR:OH	2.13	0.49
1:B:39:ASN:OD1	1:B:42:LYS:NZ	2.45	0.49
1:B:192:ARG:NH1	1:B:197:GLU:OE1	2.47	0.48
1:A:240:GLU:HG3	1:A:241:ASP:N	2.28	0.48
1:A:77:ASN:HD21	1:B:153:THR:HG22	1.79	0.48
1:A:158:TRP:NE1	1:A:162:MET:SD	2.87	0.47
1:B:53:GLU:OE2	5:B:492:HOH:O	2.20	0.47
1:A:49:GLU:CG	1:A:115:LYS:HD3	2.45	0.47

*Continued on next page...*

Continued from previous page...

Atom-1	Atom-2	Interatomic distance (Å)	Clash overlap (Å)
1:A:145:GLU:HA	5:A:438:HOH:O	2.14	0.46
1:A:192:ARG:HD2	1:A:197:GLU:OE1	2.15	0.46
1:B:187:HIS:O	1:B:191:LEU:N	2.38	0.46
1:A:140:ASN:ND2	5:A:481:HOH:O	2.39	0.46
1:A:82:LEU:CD1	2:A:301:2Y8:H13	2.46	0.45
2:B:301:2Y8:H14	2:B:301:2Y8:H11	1.79	0.45
1:A:181:THR:HG23	1:A:239:ASN:OD1	2.17	0.44
1:A:157:ASP:OD2	1:B:99:TYR:OH	2.28	0.44
1:B:24:ILE:HD11	1:B:260:LEU:CD1	2.48	0.44
1:A:49:GLU:HG3	1:A:115:LYS:HD3	2.00	0.44
1:A:181:THR:HG21	5:A:461:HOH:O	2.17	0.43
1:A:255:GLU:O	1:A:259:THR:HG23	2.17	0.43
1:A:84:MET:HB3	1:A:92:TRP:CD1	2.53	0.43
1:B:234:LEU:HB2	1:B:256:PHE:CD1	2.53	0.43
1:A:204:TYR:CE2	1:A:208:LEU:HD11	2.54	0.42
1:A:242:PHE:CD2	4:A:303:UDP:O4	2.72	0.42
1:B:188:ARG:HB3	4:B:303:UDP:H5'2	2.02	0.42
1:B:131:TYR:CD1	1:B:228:LEU:HD11	2.56	0.41
1:B:231:VAL:HG22	1:B:232:PRO:HD2	2.02	0.41

All (2) symmetry-related close contacts are listed below. The label for Atom-2 includes the symmetry operator and encoded unit-cell translations to be applied.

Atom-1	Atom-2	Interatomic distance (Å)	Clash overlap (Å)
1:B:83:GLN:OE1	5:B:418:HOH:O[4_664]	1.98	0.22
1:A:87:GLU:OE1	5:A:486:HOH:O[3_555]	2.13	0.07

## 5.3 Torsion angles

### 5.3.1 Protein backbone

In the following table, the Percentiles column shows the percent Ramachandran outliers of the chain as a percentile score with respect to all X-ray entries followed by that with respect to entries of similar resolution.

The Analysed column shows the number of residues for which the backbone conformation was analysed, and the total number of residues.

Mol	Chain	Analysed	Favoured	Allowed	Outliers	Percentiles
1	A	231/280 (82%)	219 (95%)	12 (5%)	0	<b>100</b> <b>100</b>

Continued on next page...

*Continued from previous page...*

Mol	Chain	Analysed	Favoured	Allowed	Outliers	Percentiles	
1	B	231/280 (82%)	222 (96%)	9 (4%)	0	100	100
All	All	462/560 (82%)	441 (96%)	21 (4%)	0	100	100

There are no Ramachandran outliers to report.

### 5.3.2 Protein sidechains ⓘ

In the following table, the Percentiles column shows the percent sidechain outliers of the chain as a percentile score with respect to all X-ray entries followed by that with respect to entries of similar resolution.

The Analysed column shows the number of residues for which the sidechain conformation was analysed, and the total number of residues.

Mol	Chain	Analysed	Rotameric	Outliers	Percentiles	
1	A	207/256 (81%)	201 (97%)	6 (3%)	48	30
1	B	206/256 (80%)	196 (95%)	10 (5%)	29	11
All	All	413/512 (81%)	397 (96%)	16 (4%)	36	18

All (16) residues with a non-rotameric sidechain are listed below:

Mol	Chain	Res	Type
1	A	35	SER
1	A	60	ASN
1	A	81	VAL
1	A	132	SER
1	A	168	GLN
1	A	221	LEU
1	B	60	ASN
1	B	88	LYS
1	B	132	SER
1	B	162	MET
1	B	165	GLN
1	B	192	ARG
1	B	211	LYS
1	B	223	THR
1	B	224	ASN
1	B	255	GLU

Some sidechains can be flipped to improve hydrogen bonding and reduce clashes. All (2) such sidechains are listed below:

Mol	Chain	Res	Type
1	A	224	ASN
1	B	224	ASN

### 5.3.3 RNA ⓘ

There are no RNA molecules in this entry.

## 5.4 Non-standard residues in protein, DNA, RNA chains ⓘ

There are no non-standard protein/DNA/RNA residues in this entry.

## 5.5 Carbohydrates ⓘ

There are no carbohydrates in this entry.

## 5.6 Ligand geometry ⓘ

6 ligands are modelled in this entry.

In the following table, the Counts columns list the number of bonds (or angles) for which Mogul statistics could be retrieved, the number of bonds (or angles) that are observed in the model and the number of bonds (or angles) that are defined in the chemical component dictionary. The Link column lists molecule types, if any, to which the group is linked. The Z score for a bond length (or angle) is the number of standard deviations the observed value is removed from the expected value. A bond length (or angle) with  $|Z| > 2$  is considered an outlier worth inspection. RMSZ is the root-mean-square of all Z scores of the bond lengths (or angles).

Mol	Type	Chain	Res	Link	Bond lengths			Bond angles		
					Counts	RMSZ	# $ Z  > 2$	Counts	RMSZ	# $ Z  > 2$
2	2Y8	A	301	-	25,31,31	3.13	4 (16%)	28,43,43	1.85	6 (21%)
3	2Y7	A	302	-	25,31,31	1.77	4 (16%)	28,43,43	1.69	8 (28%)
4	UDP	A	303	-	21,26,26	1.24	3 (14%)	22,40,40	1.81	1 (4%)
2	2Y8	B	301	-	25,31,31	2.57	4 (16%)	28,43,43	2.27	10 (35%)
3	2Y7	B	302	-	25,31,31	1.59	4 (16%)	28,43,43	1.78	7 (25%)
4	UDP	B	303	-	21,26,26	1.01	2 (9%)	22,40,40	1.96	1 (4%)

In the following table, the Chirals column lists the number of chiral outliers, the number of chiral centers analysed, the number of these observed in the model and the number defined in the chemical component dictionary. Similar counts are reported in the Torsion and Rings columns. '-' means no outliers of that kind were identified.

Mol	Type	Chain	Res	Link	Chirals	Torsions	Rings
2	2Y8	A	301	-	-	0/14/18/18	0/3/3/3
3	2Y7	A	302	-	-	0/14/18/18	0/3/3/3
4	UDP	A	303	-	-	0/12/32/32	0/2/2/2
2	2Y8	B	301	-	-	0/14/18/18	0/3/3/3
3	2Y7	B	302	-	-	0/14/18/18	0/3/3/3
4	UDP	B	303	-	-	0/12/32/32	0/2/2/2

All (21) bond length outliers are listed below:

Mol	Chain	Res	Type	Atoms	Z	Observed(Å)	Ideal(Å)
2	A	301	2Y8	CBA-SAS	-14.13	1.54	1.73
2	B	301	2Y8	CBA-SAS	-9.97	1.59	1.73
3	B	302	2Y7	CBC-SAR	-5.17	1.77	1.83
3	A	302	2Y7	FAF-CAK	-4.56	1.20	1.38
3	A	302	2Y7	CAV-CBB	-4.53	1.33	1.42
2	B	301	2Y8	CAV-CBB	-4.42	1.33	1.42
2	A	301	2Y8	CAV-CBB	-4.05	1.34	1.42
2	B	301	2Y8	FAF-CAK	-3.94	1.22	1.38
3	B	302	2Y7	CAV-CBB	-3.84	1.35	1.42
3	A	302	2Y7	CBC-SAR	-3.54	1.79	1.83
2	A	301	2Y8	CBC-SAR	-2.46	1.80	1.83
3	B	302	2Y7	CBA-SAS	-2.38	1.70	1.73
4	A	303	UDP	C2-N3	-2.17	1.33	1.38
4	B	303	UDP	C2-N3	-2.05	1.34	1.38
4	A	303	UDP	O4'-C1'	2.04	1.44	1.41
3	A	302	2Y7	CAK-CAL	2.36	1.52	1.49
3	B	302	2Y7	CAK-CAL	2.54	1.52	1.49
4	B	303	UDP	PB-O3A	2.75	1.64	1.60
2	A	301	2Y8	CBA-NAO	3.14	1.36	1.31
2	B	301	2Y8	CBA-NAO	3.59	1.36	1.31
4	A	303	UDP	PB-O3A	3.81	1.66	1.60

All (33) bond angle outliers are listed below:

Mol	Chain	Res	Type	Atoms	Z	Observed(°)	Ideal(°)
2	B	301	2Y8	OAQ-CAL-CAK	-6.57	99.58	107.92
2	A	301	2Y8	OAQ-CAL-CAK	-3.77	103.14	107.92
3	B	302	2Y7	N1-C2-N3	-3.71	120.18	126.82
2	A	301	2Y8	N1-C2-N3	-3.68	120.24	126.82
2	B	301	2Y8	N1-C2-N3	-3.39	120.77	126.82
3	A	302	2Y7	N1-C2-N3	-3.23	121.04	126.82
2	A	301	2Y8	FAF-CAK-CAL	-3.14	104.64	110.67
3	A	302	2Y7	FAF-CAK-CAL	-2.75	105.39	110.67

*Continued on next page...*

*Continued from previous page...*

Mol	Chain	Res	Type	Atoms	Z	Observed(°)	Ideal(°)
2	B	301	2Y8	FAF-CAK-CAL	-2.46	105.94	110.67
2	B	301	2Y8	OAQ-CAY-CAX	-2.21	111.14	115.76
3	B	302	2Y7	CAA-OAP-CAX	2.01	120.43	117.54
3	B	302	2Y7	NAD-C6-N1	2.05	120.09	116.64
2	B	301	2Y8	SAR-C2-N3	2.05	122.97	115.70
2	B	301	2Y8	CAL-OAQ-CAY	2.11	122.84	117.70
2	B	301	2Y8	C2-N3-C4	2.13	118.76	115.94
2	A	301	2Y8	CAA-OAP-CAX	2.26	120.79	117.54
3	A	302	2Y7	SAR-C2-N3	2.28	123.79	115.70
2	B	301	2Y8	CAV-CBB-NAO	2.42	114.24	110.37
3	A	302	2Y7	NAE-C4-N3	2.44	120.74	116.64
3	A	302	2Y7	CAA-OAP-CAX	2.64	121.34	117.54
2	A	301	2Y8	C2-N1-C6	2.79	119.64	115.94
3	A	302	2Y7	C2-N3-C4	2.82	119.67	115.94
3	B	302	2Y7	NAE-C4-N3	3.06	121.79	116.64
3	B	302	2Y7	CAV-CBB-NAO	3.34	115.71	110.37
2	B	301	2Y8	CAA-OAP-CAX	3.35	122.35	117.54
3	B	302	2Y7	C2-N3-C4	3.46	120.51	115.94
3	A	302	2Y7	CAV-CBB-NAO	3.55	116.04	110.37
3	B	302	2Y7	C2-N1-C6	3.63	120.74	115.94
3	A	302	2Y7	C2-N1-C6	3.77	120.93	115.94
2	A	301	2Y8	C2-N3-C4	4.55	121.95	115.94
2	B	301	2Y8	C2-N1-C6	4.92	122.45	115.94
4	A	303	UDP	C4-N3-C2	7.37	120.46	114.13
4	B	303	UDP	C4-N3-C2	8.37	121.32	114.13

There are no chirality outliers.

There are no torsion outliers.

There are no ring outliers.

4 monomers are involved in 6 short contacts:

Mol	Chain	Res	Type	Clashes	Symm-Clashes
2	A	301	2Y8	2	0
4	A	303	UDP	1	0
2	B	301	2Y8	2	0
4	B	303	UDP	1	0

## 5.7 Other polymers

There are no such residues in this entry.



## 5.8 Polymer linkage issues ⓘ

There are no chain breaks in this entry.

## 6 Fit of model and data [i](#)

### 6.1 Protein, DNA and RNA chains [i](#)

In the following table, the column labelled ‘#RSRZ> 2’ contains the number (and percentage) of RSRZ outliers, followed by percent RSRZ outliers for the chain as percentile scores relative to all X-ray entries and entries of similar resolution. The OWAB column contains the minimum, median, 95<sup>th</sup> percentile and maximum values of the occupancy-weighted average B-factor per residue. The column labelled ‘Q< 0.9’ lists the number of (and percentage) of residues with an average occupancy less than 0.9.

Mol	Chain	Analysed	<RSRZ>	#RSRZ>2	OWAB(Å <sup>2</sup> )	Q<0.9
1	A	231/280 (82%)	-0.28	1 (0%) 92 92	25, 36, 52, 65	0
1	B	231/280 (82%)	-0.20	2 (0%) 84 84	25, 37, 56, 70	0
All	All	462/560 (82%)	-0.24	3 (0%) 89 89	25, 36, 55, 70	0

All (3) RSRZ outliers are listed below:

Mol	Chain	Res	Type	RSRZ
1	B	166	PHE	3.1
1	B	167	GLY	3.0
1	A	162	MET	2.3

### 6.2 Non-standard residues in protein, DNA, RNA chains [i](#)

There are no non-standard protein/DNA/RNA residues in this entry.

### 6.3 Carbohydrates [i](#)

There are no carbohydrates in this entry.

### 6.4 Ligands [i](#)

In the following table, the Atoms column lists the number of modelled atoms in the group and the number defined in the chemical component dictionary. LLDF column lists the quality of electron density of the group with respect to its neighbouring residues in protein, DNA or RNA chains. The B-factors column lists the minimum, median, 95<sup>th</sup> percentile and maximum values of B factors of atoms in the group. The column labelled ‘Q< 0.9’ lists the number of atoms with occupancy less than 0.9.

Mol	Type	Chain	Res	Atoms	RSCC	RSR	LLDF	B-factors( $\text{\AA}^2$ )	Q<0.9
3	2Y7	B	302	29/29	0.94	0.14	2.55	39,45,59,61	0
3	2Y7	A	302	29/29	0.95	0.12	1.60	39,44,49,52	0
2	2Y8	B	301	29/29	0.94	0.11	0.46	27,38,48,54	0
2	2Y8	A	301	29/29	0.95	0.11	0.14	30,45,53,54	0
4	UDP	A	303	25/25	0.98	0.08	-0.61	28,37,45,48	0
4	UDP	B	303	25/25	0.98	0.08	-0.79	28,39,46,48	0

## 6.5 Other polymers [i](#)

There are no such residues in this entry.