



# Full wwPDB X-ray Structure Validation Report ⓘ

Feb 12, 2018 – 11:34 AM EST

PDB ID : 5Q1B  
Title : Ligand binding to FARNESOID-X-RECEPTOR  
Authors : Rudolph, M.G.; Benz, J.; Burger, D.; Thoma, R.; Ruf, A.; Joseph, C.; Kuhn, B.; Shao, C.; Yang, H.; Burley, S.K.  
Deposited on : 2017-05-31  
Resolution : 2.30 Å(reported)

This is a Full wwPDB X-ray Structure Validation Report for a publicly released PDB entry.

We welcome your comments at [validation@mail.wwpdb.org](mailto:validation@mail.wwpdb.org)

A user guide is available at

<http://wwpdb.org/validation/2016/XrayValidationReportHelp>

with specific help available everywhere you see the ⓘ symbol.

---

The following versions of software and data (see [references ⓘ](#)) were used in the production of this report:

MolProbity : 4.02b-467  
Mogul : 1.7.2 (RC1), CSD as538be (2017)  
Xtriage (Phenix) : 1.9-1692  
EDS : rb-20030736  
Percentile statistics : 20161228.v01 (using entries in the PDB archive December 28th 2016)  
Refmac : 5.8.0135  
CCP4 : 6.5.0  
Ideal geometry (proteins) : Engh & Huber (2001)  
Ideal geometry (DNA, RNA) : Parkinson et al. (1996)  
Validation Pipeline (wwPDB-VP) : rb-20030736

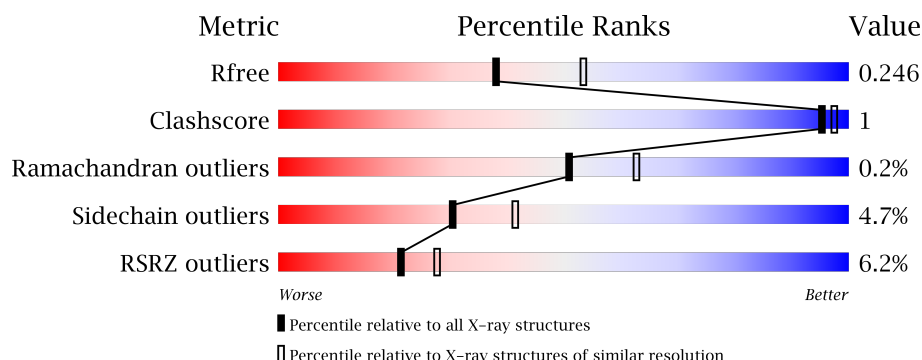
# 1 Overall quality at a glance

The following experimental techniques were used to determine the structure:

## *X-RAY DIFFRACTION*

The reported resolution of this entry is 2.30 Å.

Percentile scores (ranging between 0-100) for global validation metrics of the entry are shown in the following graphic. The table shows the number of entries on which the scores are based.



Metric	Whole archive (#Entries)	Similar resolution (#Entries, resolution range(Å))
$R_{free}$	100719	4130 (2.30-2.30)
Clashscore	112137	4751 (2.30-2.30)
Ramachandran outliers	110173	4705 (2.30-2.30)
Sidechain outliers	110143	4704 (2.30-2.30)
RSRZ outliers	101464	4156 (2.30-2.30)

The table below summarises the geometric issues observed across the polymeric chains and their fit to the electron density. The red, orange, yellow and green segments on the lower bar indicate the fraction of residues that contain outliers for  $\geq 3$ , 2, 1 and 0 types of geometric quality criteria. A grey segment represents the fraction of residues that are not modelled. The numeric value for each fraction is indicated below the corresponding segment, with a dot representing fractions  $\leq 5\%$ . The upper red bar (where present) indicates the fraction of residues that have poor fit to the electron density. The numeric value is given above the bar.

Mol	Chain	Length	Quality of chain
1	A	233	<div> <div>4%</div> <div> <div></div> <div>90%</div> <div>9%</div> <div>.</div> </div> </div>
1	C	233	<div> <div>9%</div> <div> <div></div> <div>90%</div> <div>9%</div> <div>.</div> </div> </div>
2	B	14	<div> <div>7%</div> <div> <div></div> <div>79%</div> <div>7%</div> <div>14%</div> </div> </div>
2	D	14	<div> <div> <div></div> <div>71%</div> <div>7%</div> <div>21%</div> </div> </div>

## 2 Entry composition [i](#)

There are 4 unique types of molecules in this entry. The entry contains 4131 atoms, of which 0 are hydrogens and 0 are deuteriums.

In the tables below, the ZeroOcc column contains the number of atoms modelled with zero occupancy, the AltConf column contains the number of residues with at least one atom in alternate conformation and the Trace column contains the number of residues modelled with at most 2 atoms.

- Molecule 1 is a protein called Bile acid receptor.

Mol	Chain	Residues	Atoms					ZeroOcc	AltConf	Trace
1	A	230	Total	C	N	O	S	0	0	0
			1881	1203	317	349	12			
1	C	230	Total	C	N	O	S	0	0	0
			1881	1203	317	349	12			

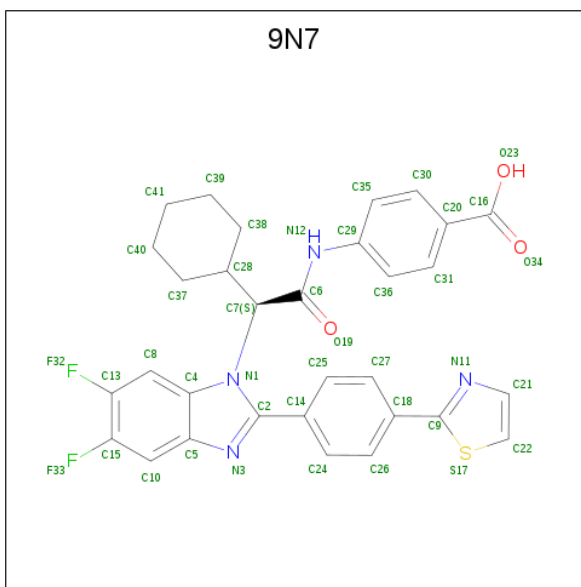
There are 12 discrepancies between the modelled and reference sequences:

Chain	Residue	Modelled	Actual	Comment	Reference
A	244	GLY	-	expression tag	UNP Q96RI1
A	245	SER	-	expression tag	UNP Q96RI1
A	246	HIS	-	expression tag	UNP Q96RI1
A	247	MET	-	expression tag	UNP Q96RI1
A	281	ALA	GLU	conflict	UNP Q96RI1
A	354	ALA	GLU	conflict	UNP Q96RI1
C	244	GLY	-	expression tag	UNP Q96RI1
C	245	SER	-	expression tag	UNP Q96RI1
C	246	HIS	-	expression tag	UNP Q96RI1
C	247	MET	-	expression tag	UNP Q96RI1
C	281	ALA	GLU	conflict	UNP Q96RI1
C	354	ALA	GLU	conflict	UNP Q96RI1

- Molecule 2 is a protein called COACTIVATOR PEPTIDE SRC-1 HD3.

Mol	Chain	Residues	Atoms				ZeroOcc	AltConf	Trace
2	B	12	Total	C	N	O	0	0	0
			107	68	19	20			
2	D	11	Total	C	N	O	0	0	0
			99	64	18	17			

- Molecule 3 is 4-[(2S)-2-cyclohexyl-2-{5,6-difluoro-2-[4-(1,3-thiazol-2-yl)phenyl]-1H-benzimidazol-1-yl}acetyl]amino}benzoic acid (three-letter code: 9N7) (formula: C<sub>31</sub>H<sub>26</sub>F<sub>2</sub>N<sub>4</sub>O<sub>3</sub>S).



Mol	Chain	Residues	Atoms						ZeroOcc	AltConf
3	A	1	Total	C	F	N	O	S	0	0
			41	31	2	4	3	1		
3	C	1	Total	C	F	N	O	S	0	0
			41	31	2	4	3	1		

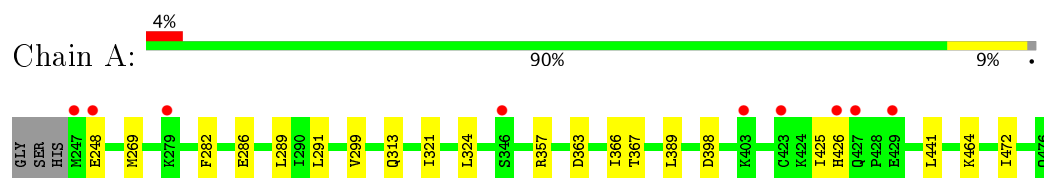
- Molecule 4 is water.

Mol	Chain	Residues	Atoms		ZeroOcc	AltConf
4	A	42	Total	O	0	0
			42	42		
4	B	2	Total	O	0	0
			2	2		
4	C	35	Total	O	0	0
			35	35		
4	D	2	Total	O	0	0
			2	2		

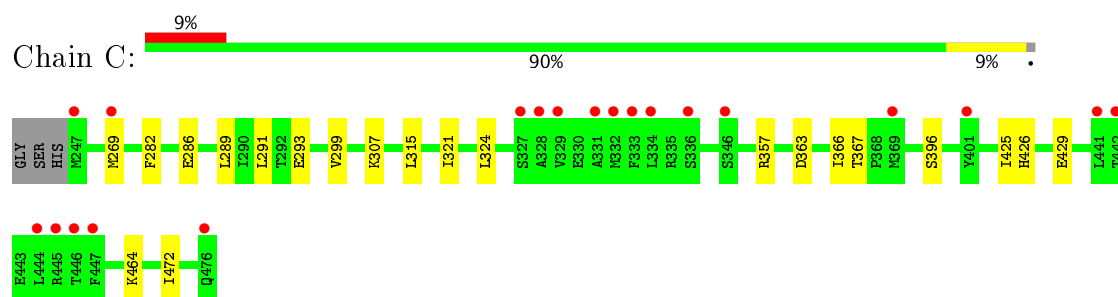
### 3 Residue-property plots [i](#)

These plots are drawn for all protein, RNA and DNA chains in the entry. The first graphic for a chain summarises the proportions of the various outlier classes displayed in the second graphic. The second graphic shows the sequence view annotated by issues in geometry and electron density. Residues are color-coded according to the number of geometric quality criteria for which they contain at least one outlier: green = 0, yellow = 1, orange = 2 and red = 3 or more. A red dot above a residue indicates a poor fit to the electron density ( $RSRZ > 2$ ). Stretches of 2 or more consecutive residues without any outlier are shown as a green connector. Residues present in the sample, but not in the model, are shown in grey.

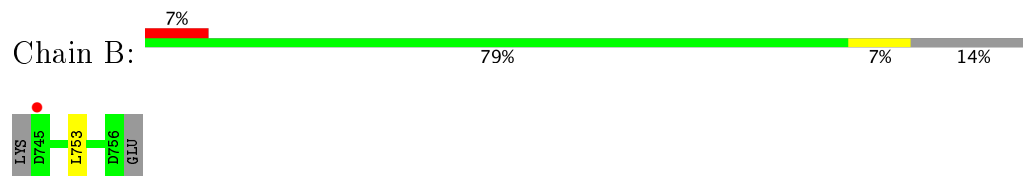
- Molecule 1: Bile acid receptor



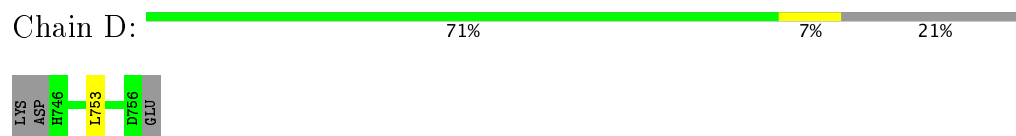
- Molecule 1: Bile acid receptor



- Molecule 2: COACTIVATOR PEPTIDE SRC-1 HD3



- Molecule 2: COACTIVATOR PEPTIDE SRC-1 HD3



## 4 Data and refinement statistics

Property	Value	Source
Space group	C 2 2 21	Depositor
Cell constants a, b, c, $\alpha$ , $\beta$ , $\gamma$	72.09 Å   83.58 Å   187.99 Å 90.00°   90.00°   90.00°	Depositor
Resolution (Å)	33.66 – 2.30 33.66 – 2.30	Depositor EDS
% Data completeness (in resolution range)	98.9 (33.66-2.30) 98.9 (33.66-2.30)	Depositor EDS
$R_{merge}$	0.08	Depositor
$R_{sym}$	(Not available)	Depositor
$\langle I/\sigma(I) \rangle$ <sup>1</sup>	1.24 (at 2.29 Å)	Xtriage
Refinement program	BUSTER 2.10.3	Depositor
R, $R_{free}$	0.214   ,   0.236 0.219   ,   0.246	Depositor DCC
$R_{free}$ test set	1264 reflections (5.25%)	DCC
Wilson B-factor (Å <sup>2</sup> )	51.8	Xtriage
Anisotropy	0.178	Xtriage
Bulk solvent $k_{sol}$ (e/Å <sup>3</sup> ), $B_{sol}$ (Å <sup>2</sup> )	0.30 , 47.7	EDS
L-test for twinning <sup>2</sup>	$\langle  L  \rangle = 0.45$ , $\langle L^2 \rangle = 0.27$	Xtriage
Estimated twinning fraction	No twinning to report.	Xtriage
$F_o, F_c$ correlation	0.95	EDS
Total number of atoms	4131	wwPDB-VP
Average B, all atoms (Å <sup>2</sup> )	68.0	wwPDB-VP

Xtriage's analysis on translational NCS is as follows: *The largest off-origin peak in the Patterson function is 4.85% of the height of the origin peak. No significant pseudotranslation is detected.*

<sup>1</sup>Intensities estimated from amplitudes.

<sup>2</sup>Theoretical values of  $\langle |L| \rangle$ ,  $\langle L^2 \rangle$  for acentric reflections are 0.5, 0.333 respectively for untwinned datasets, and 0.375, 0.2 for perfectly twinned datasets.

## 5 Model quality [i](#)

### 5.1 Standard geometry [i](#)

Bond lengths and bond angles in the following residue types are not validated in this section: 9N7

The Z score for a bond length (or angle) is the number of standard deviations the observed value is removed from the expected value. A bond length (or angle) with  $|Z| > 5$  is considered an outlier worth inspection. RMSZ is the root-mean-square of all Z scores of the bond lengths (or angles).

Mol	Chain	Bond lengths		Bond angles	
		RMSZ	$\# Z  > 5$	RMSZ	$\# Z  > 5$
1	A	0.47	0/1921	0.59	0/2595
1	C	0.45	0/1921	0.59	0/2595
2	B	0.42	0/108	0.51	0/144
2	D	0.42	0/100	0.54	0/133
All	All	0.46	0/4050	0.59	0/5467

There are no bond length outliers.

There are no bond angle outliers.

There are no chirality outliers.

There are no planarity outliers.

### 5.2 Too-close contacts [i](#)

In the following table, the Non-H and H(model) columns list the number of non-hydrogen atoms and hydrogen atoms in the chain respectively. The H(added) column lists the number of hydrogen atoms added and optimized by MolProbity. The Clashes column lists the number of clashes within the asymmetric unit, whereas Symm-Clashes lists symmetry related clashes.

Mol	Chain	Non-H	H(model)	H(added)	Clashes	Symm-Clashes
1	A	1881	0	1883	6	0
1	C	1881	0	1883	5	0
2	B	107	0	105	1	0
2	D	99	0	101	1	0
3	A	41	0	0	0	0
3	C	41	0	0	0	0
4	A	42	0	0	0	0
4	B	2	0	0	0	0
4	C	35	0	0	0	0

*Continued on next page...*

*Continued from previous page...*

Mol	Chain	Non-H	H(model)	H(added)	Clashes	Symm-Clashes
4	D	2	0	0	0	0
All	All	4131	0	3972	11	0

The all-atom clashscore is defined as the number of clashes found per 1000 atoms (including hydrogen atoms). The all-atom clashscore for this structure is 1.

All (11) close contacts within the same asymmetric unit are listed below, sorted by their clash magnitude.

Atom-1	Atom-2	Interatomic distance (Å)	Clash overlap (Å)
1:C:363:ASP:HA	1:C:366:ILE:HD12	1.90	0.53
1:A:363:ASP:HA	1:A:366:ILE:HD12	1.92	0.51
1:C:299:VAL:HG11	1:C:472:ILE:HG13	1.93	0.51
1:A:299:VAL:HG11	1:A:472:ILE:HG13	1.93	0.49
1:C:321:ILE:HD13	2:D:753:LEU:HD12	1.96	0.47
1:A:321:ILE:HD13	2:B:753:LEU:HD12	1.98	0.46
1:A:282:PHE:HB3	1:A:286:GLU:HB2	1.99	0.43
1:C:282:PHE:HB3	1:C:286:GLU:HB2	2.00	0.43
1:A:425:ILE:HG22	1:A:426:HIS:CD2	2.55	0.42
1:A:389:LEU:HG	1:A:441:LEU:HD21	2.00	0.42
1:C:425:ILE:HG22	1:C:426:HIS:CD2	2.55	0.41

There are no symmetry-related clashes.

## 5.3 Torsion angles ⓘ

### 5.3.1 Protein backbone ⓘ

In the following table, the Percentiles column shows the percent Ramachandran outliers of the chain as a percentile score with respect to all X-ray entries followed by that with respect to entries of similar resolution.

The Analysed column shows the number of residues for which the backbone conformation was analysed, and the total number of residues.

Mol	Chain	Analysed	Favoured	Allowed	Outliers	Percentiles	
1	A	228/233 (98%)	223 (98%)	4 (2%)	1 (0%)	38	47
1	C	228/233 (98%)	225 (99%)	3 (1%)	0	100	100
2	B	10/14 (71%)	9 (90%)	1 (10%)	0	100	100
2	D	9/14 (64%)	9 (100%)	0	0	100	100

*Continued on next page...*



*Continued from previous page...*

Mol	Chain	Analysed	Favoured	Allowed	Outliers	Percentiles
All	All	475/494 (96%)	466 (98%)	8 (2%)	1 (0%)	51 63

All (1) Ramachandran outliers are listed below:

Mol	Chain	Res	Type
1	A	398	ASP

### 5.3.2 Protein sidechains ⓘ

In the following table, the Percentiles column shows the percent sidechain outliers of the chain as a percentile score with respect to all X-ray entries followed by that with respect to entries of similar resolution.

The Analysed column shows the number of residues for which the sidechain conformation was analysed, and the total number of residues.

Mol	Chain	Analysed	Rotameric	Outliers	Percentiles
1	A	211/213 (99%)	202 (96%)	9 (4%)	33 45
1	C	211/213 (99%)	199 (94%)	12 (6%)	24 32
2	B	12/14 (86%)	12 (100%)	0	100 100
2	D	11/14 (79%)	11 (100%)	0	100 100
All	All	445/454 (98%)	424 (95%)	21 (5%)	30 41

All (21) residues with a non-rotameric sidechain are listed below:

Mol	Chain	Res	Type
1	A	248	GLU
1	A	269	MET
1	A	289	LEU
1	A	291	LEU
1	A	313	GLN
1	A	324	LEU
1	A	357	ARG
1	A	367	THR
1	A	464	LYS
1	C	269	MET
1	C	289	LEU
1	C	291	LEU
1	C	293	GLU
1	C	307	LYS

*Continued on next page...*

*Continued from previous page...*

Mol	Chain	Res	Type
1	C	315	LEU
1	C	324	LEU
1	C	357	ARG
1	C	367	THR
1	C	396	SER
1	C	429	GLU
1	C	464	LYS

Some sidechains can be flipped to improve hydrogen bonding and reduce clashes. All (8) such sidechains are listed below:

Mol	Chain	Res	Type
1	A	265	ASN
1	A	267	GLN
1	A	383	GLN
1	A	426	HIS
1	A	433	HIS
1	C	267	GLN
1	C	348	HIS
1	C	426	HIS

### 5.3.3 RNA [i](#)

There are no RNA molecules in this entry.

## 5.4 Non-standard residues in protein, DNA, RNA chains [i](#)

There are no non-standard protein/DNA/RNA residues in this entry.

## 5.5 Carbohydrates [i](#)

There are no carbohydrates in this entry.

## 5.6 Ligand geometry [i](#)

2 ligands are modelled in this entry.

In the following table, the Counts columns list the number of bonds (or angles) for which Mogul statistics could be retrieved, the number of bonds (or angles) that are observed in the model and the number of bonds (or angles) that are defined in the Chemical Component Dictionary. The

Link column lists molecule types, if any, to which the group is linked. The Z score for a bond length (or angle) is the number of standard deviations the observed value is removed from the expected value. A bond length (or angle) with  $|Z| > 2$  is considered an outlier worth inspection. RMSZ is the root-mean-square of all Z scores of the bond lengths (or angles).

Mol	Type	Chain	Res	Link	Bond lengths			Bond angles		
					Counts	RMSZ	# Z  > 2	Counts	RMSZ	# Z  > 2
3	9N7	A	501	-	41,46,46	0.62	0	48,66,66	0.96	5 (10%)
3	9N7	C	501	-	41,46,46	0.84	1 (2%)	48,66,66	0.93	3 (6%)

In the following table, the Chirals column lists the number of chiral outliers, the number of chiral centers analysed, the number of these observed in the model and the number defined in the Chemical Component Dictionary. Similar counts are reported in the Torsion and Rings columns. '-' means no outliers of that kind were identified.

Mol	Type	Chain	Res	Link	Chirals	Torsions	Rings
3	9N7	A	501	-	-	0/20/36/36	0/6/6/6
3	9N7	C	501	-	-	0/20/36/36	0/6/6/6

All (1) bond length outliers are listed below:

Mol	Chain	Res	Type	Atoms	Z	Observed(Å)	Ideal(Å)
3	C	501	9N7	C37-C28	2.61	1.59	1.53

All (8) bond angle outliers are listed below:

Mol	Chain	Res	Type	Atoms	Z	Observed(°)	Ideal(°)
3	C	501	9N7	C13-C8-C4	-2.79	116.42	119.22
3	A	501	9N7	C13-C8-C4	-2.61	116.60	119.22
3	A	501	9N7	C24-C14-C2	-2.34	116.07	120.72
3	C	501	9N7	C21-N11-C9	2.22	110.12	104.39
3	A	501	9N7	C21-N11-C9	2.23	110.15	104.39
3	A	501	9N7	C25-C14-C2	2.35	125.37	120.72
3	C	501	9N7	C8-C4-C5	2.59	123.11	120.54
3	A	501	9N7	C8-C4-C5	2.62	123.13	120.54

There are no chirality outliers.

There are no torsion outliers.

There are no ring outliers.

No monomer is involved in short contacts.

## 5.7 Other polymers

There are no such residues in this entry.

## 5.8 Polymer linkage issues

There are no chain breaks in this entry.

## 6 Fit of model and data ⓘ

### 6.1 Protein, DNA and RNA chains ⓘ

In the following table, the column labelled ‘#RSRZ> 2’ contains the number (and percentage) of RSRZ outliers, followed by percent RSRZ outliers for the chain as percentile scores relative to all X-ray entries and entries of similar resolution. The OWAB column contains the minimum, median, 95<sup>th</sup> percentile and maximum values of the occupancy-weighted average B-factor per residue. The column labelled ‘Q< 0.9’ lists the number of (and percentage) of residues with an average occupancy less than 0.9.

Mol	Chain	Analysed	<RSRZ>	#RSRZ>2	OWAB(Å <sup>2</sup> )	Q<0.9
1	A	230/233 (98%)	0.24	9 (3%) 40 47	35, 63, 105, 127	0
1	C	230/233 (98%)	0.56	20 (8%) 11 15	42, 69, 96, 128	0
2	B	12/14 (85%)	0.09	1 (8%) 12 16	52, 73, 94, 131	0
2	D	11/14 (78%)	-0.03	0 100 100	54, 65, 90, 127	0
All	All	483/494 (97%)	0.38	30 (6%) 21 28	35, 66, 99, 131	0

All (30) RSRZ outliers are listed below:

Mol	Chain	Res	Type	RSRZ
1	A	247	MET	8.3
1	C	476	GLN	6.9
1	A	429	GLU	4.7
1	C	332	MET	4.3
1	A	426	HIS	4.1
1	C	333	PHE	3.8
1	C	247	MET	3.5
2	B	745	ASP	3.5
1	A	346	SER	3.3
1	C	346	SER	3.2
1	C	328	ALA	3.1
1	C	331	ALA	3.1
1	C	444	LEU	3.0
1	C	446	THR	3.0
1	C	447	PHE	3.0
1	C	269	MET	3.0
1	C	334	LEU	2.9
1	C	329	VAL	2.8
1	C	336	SER	2.8
1	C	442	THR	2.8
1	C	441	LEU	2.7

*Continued on next page...*

*Continued from previous page...*

Mol	Chain	Res	Type	RSRZ
1	C	327	SER	2.6
1	C	445	ARG	2.6
1	A	427	GLN	2.5
1	A	248	GLU	2.4
1	A	279	LYS	2.4
1	C	401	TYR	2.2
1	C	369	MET	2.2
1	A	423	CYS	2.1
1	A	403	LYS	2.0

## 6.2 Non-standard residues in protein, DNA, RNA chains [i](#)

There are no non-standard protein/DNA/RNA residues in this entry.

## 6.3 Carbohydrates [i](#)

There are no carbohydrates in this entry.

## 6.4 Ligands [i](#)

In the following table, the Atoms column lists the number of modelled atoms in the group and the number defined in the chemical component dictionary. LLDF column lists the quality of electron density of the group with respect to its neighbouring residues in protein, DNA or RNA chains. The B-factors column lists the minimum, median, 95<sup>th</sup> percentile and maximum values of B factors of atoms in the group. The column labelled 'Q < 0.9' lists the number of atoms with occupancy less than 0.9.

Mol	Type	Chain	Res	Atoms	RSCC	RSR	LLDF	B-factors( $\text{\AA}^2$ )	Q<0.9
3	9N7	C	501	41/41	0.95	0.21	0.38	38,53,64,66	0
3	9N7	A	501	41/41	0.96	0.14	-0.03	42,46,55,60	0

## 6.5 Other polymers [i](#)

There are no such residues in this entry.