



Full wwPDB X-ray Structure Validation Report ⓘ

Feb 15, 2017 – 03:32 am GMT

PDB ID : 3Q24
Title : X-ray crystal structure of the N4 mini-VRNAP and P2_7a promoter transcription initiation complex with pppGpG and pyrophosphate: product complex
Authors : Gleghorn, M.L.; Murakami, K.S.
Deposited on : 2010-12-19
Resolution : 1.81 Å(reported)

This is a Full wwPDB X-ray Structure Validation Report for a publicly released PDB entry.

We welcome your comments at validation@mail.wwpdb.org

A user guide is available at

<http://wwpdb.org/validation/2016/XrayValidationReportHelp>

with specific help available everywhere you see the ⓘ symbol.

The following versions of software and data (see [references ⓘ](#)) were used in the production of this report:

MolProbity : 4.02b-467
Mogul : 1.7.2 (RC1), CSD as538be (2017)
Xtriage (Phenix) : 1.9-1692
EDS : trunk28620
Percentile statistics : 20161228.v01 (using entries in the PDB archive December 28th 2016)
Refmac : 5.8.0135
CCP4 : 6.5.0
Ideal geometry (proteins) : Engh & Huber (2001)
Ideal geometry (DNA, RNA) : Parkinson et al. (1996)
Validation Pipeline (wwPDB-VP) : recalc28949

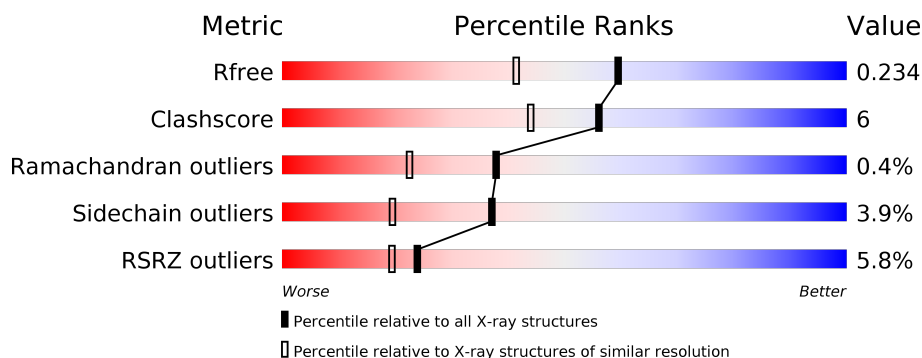
1 Overall quality at a glance

The following experimental techniques were used to determine the structure:

X-RAY DIFFRACTION

The reported resolution of this entry is 1.81 Å.

Percentile scores (ranging between 0-100) for global validation metrics of the entry are shown in the following graphic. The table shows the number of entries on which the scores are based.



Metric	Whole archive (#Entries)	Similar resolution (#Entries, resolution range(Å))
R_{free}	100719	5868 (1.84-1.80)
Clashscore	112137	6856 (1.84-1.80)
Ramachandran outliers	110173	6780 (1.84-1.80)
Sidechain outliers	110143	6780 (1.84-1.80)
RSRZ outliers	101464	5947 (1.84-1.80)

The table below summarises the geometric issues observed across the polymeric chains and their fit to the electron density. The red, orange, yellow and green segments on the lower bar indicate the fraction of residues that contain outliers for ≥ 3 , 2, 1 and 0 types of geometric quality criteria. A grey segment represents the fraction of residues that are not modelled. The numeric value for each fraction is indicated below the corresponding segment, with a dot representing fractions $\leq 5\%$. The upper red bar (where present) indicates the fraction of residues that have poor fit to the electron density. The numeric value is given above the bar.

Mol	Chain	Length	Quality of chain
1	A	1117	<div> <div>5%</div> <div> <div></div> <div>85%</div> <div>12%</div> <div>••</div> </div> </div>
1	B	1117	<div> <div>6%</div> <div> <div></div> <div>85%</div> <div>11%</div> <div>••</div> </div> </div>
2	C	36	<div> <div>6%</div> <div> <div></div> <div>42%</div> <div>14%</div> <div>•</div> <div>42%</div> </div> </div>
2	D	36	<div> <div>6%</div> <div> <div></div> <div>44%</div> <div>17%</div> <div></div> <div>39%</div> </div> </div>

The following table lists non-polymeric compounds, carbohydrate monomers and non-standard residues in protein, DNA, RNA chains that are outliers for geometric or electron-density-fit crite-

ria:

Mol	Type	Chain	Res	Chirality	Geometry	Clashes	Electron density
5	2HP	B	1106	-	-	-	X
6	POP	A	1109	-	-	-	X
6	POP	B	1107	-	-	-	X

2 Entry composition

There are 7 unique types of molecules in this entry. The entry contains 20260 atoms, of which 0 are hydrogens and 0 are deuteriums.

In the tables below, the ZeroOcc column contains the number of atoms modelled with zero occupancy, the AltConf column contains the number of residues with at least one atom in alternate conformation and the Trace column contains the number of residues modelled with at most 2 atoms.

- Molecule 1 is a protein called Virion RNA polymerase.

Mol	Chain	Residues	Atoms					ZeroOcc	AltConf	Trace
1	A	1095	Total	C	N	O	S	0	0	0
			8454	5306	1435	1672	41			
1	B	1094	Total	C	N	O	S	0	0	0
			8443	5299	1432	1671	41			

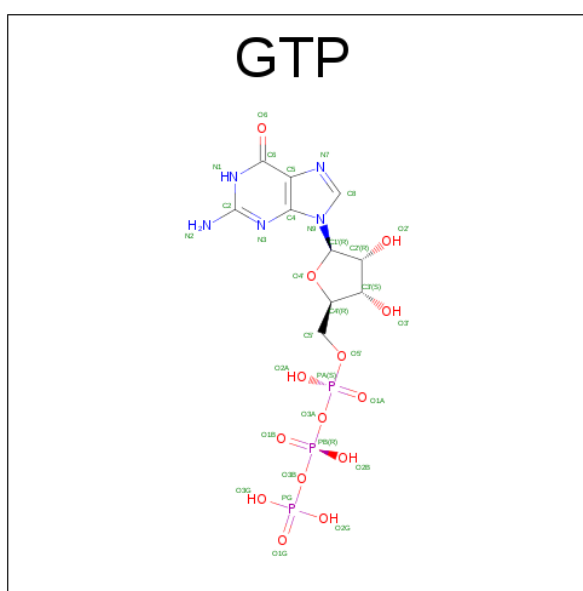
There are 24 discrepancies between the modelled and reference sequences:

Chain	Residue	Modelled	Actual	Comment	Reference
A	-11	MET	-	EXPRESSION TAG	UNP Q859P9
A	-10	GLY	-	EXPRESSION TAG	UNP Q859P9
A	-9	GLY	-	EXPRESSION TAG	UNP Q859P9
A	-8	SER	-	EXPRESSION TAG	UNP Q859P9
A	-7	HIS	-	EXPRESSION TAG	UNP Q859P9
A	-6	HIS	-	EXPRESSION TAG	UNP Q859P9
A	-5	HIS	-	EXPRESSION TAG	UNP Q859P9
A	-4	HIS	-	EXPRESSION TAG	UNP Q859P9
A	-3	HIS	-	EXPRESSION TAG	UNP Q859P9
A	-2	HIS	-	EXPRESSION TAG	UNP Q859P9
A	-1	ARG	-	EXPRESSION TAG	UNP Q859P9
A	0	SER	-	EXPRESSION TAG	UNP Q859P9
B	-11	MET	-	EXPRESSION TAG	UNP Q859P9
B	-10	GLY	-	EXPRESSION TAG	UNP Q859P9
B	-9	GLY	-	EXPRESSION TAG	UNP Q859P9
B	-8	SER	-	EXPRESSION TAG	UNP Q859P9
B	-7	HIS	-	EXPRESSION TAG	UNP Q859P9
B	-6	HIS	-	EXPRESSION TAG	UNP Q859P9
B	-5	HIS	-	EXPRESSION TAG	UNP Q859P9
B	-4	HIS	-	EXPRESSION TAG	UNP Q859P9
B	-3	HIS	-	EXPRESSION TAG	UNP Q859P9
B	-2	HIS	-	EXPRESSION TAG	UNP Q859P9
B	-1	ARG	-	EXPRESSION TAG	UNP Q859P9
B	0	SER	-	EXPRESSION TAG	UNP Q859P9

- Molecule 2 is a DNA chain called DNA (5'-D(*TP*GP*CP*CP*TP*CP*CP*CP*AP*GP*GP*CP*AP*TP*CP*CP*AP*AP*AP*AP*GP*AP*AP*GP*CP*GP*GP*AP*GP*CP*TP*TP*CP*TP*TP*C)-3').

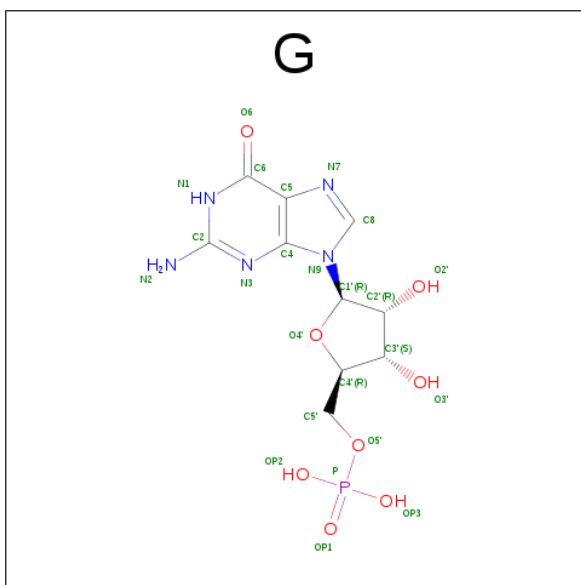
Mol	Chain	Residues	Atoms					ZeroOcc	AltConf	Trace
2	C	21	Total	C	N	O	P	0	0	0
			432	205	83	123	21			
2	D	22	Total	C	N	O	P	0	0	0
			449	215	88	125	21			

- Molecule 3 is GUANOSINE-5'-TRIPHOSPHATE (three-letter code: GTP) (formula: $C_{10}H_{16}N_5O_{14}P_3$).



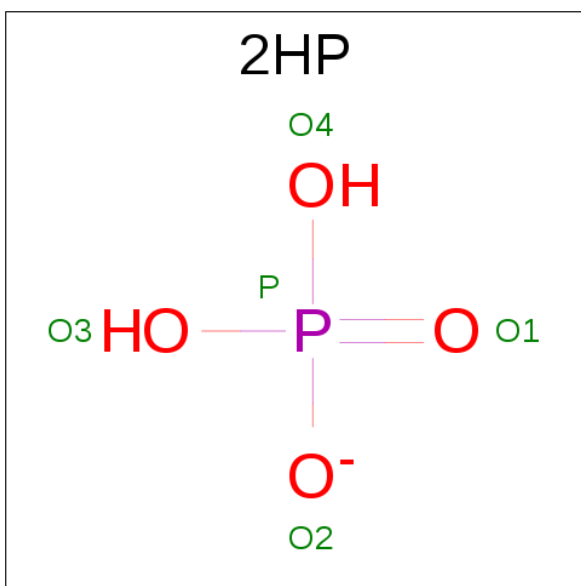
Mol	Chain	Residues	Atoms					ZeroOcc	AltConf
3	A	1	Total	C	N	O	P	0	0
			32	10	5	14	3		

- Molecule 4 is GUANOSINE-5'-MONOPHOSPHATE (three-letter code: G) (formula: $C_{10}H_{14}N_5O_8P$).



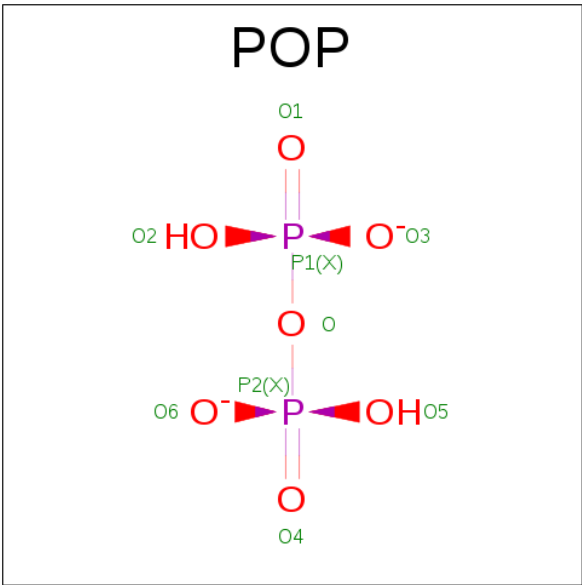
Mol	Chain	Residues	Atoms					ZeroOcc	AltConf
4	A	1	Total	C	N	O	P	0	0
			23	10	5	7	1		

- Molecule 5 is DIHYDROGENPHOSPHATE ION (three-letter code: 2HP) (formula: $\text{H}_2\text{O}_4\text{P}$).



Mol	Chain	Residues	Atoms			ZeroOcc	AltConf
5	A	1	Total	O	P	0	0
			5	4	1		
5	B	1	Total	O	P	0	0
			5	4	1		

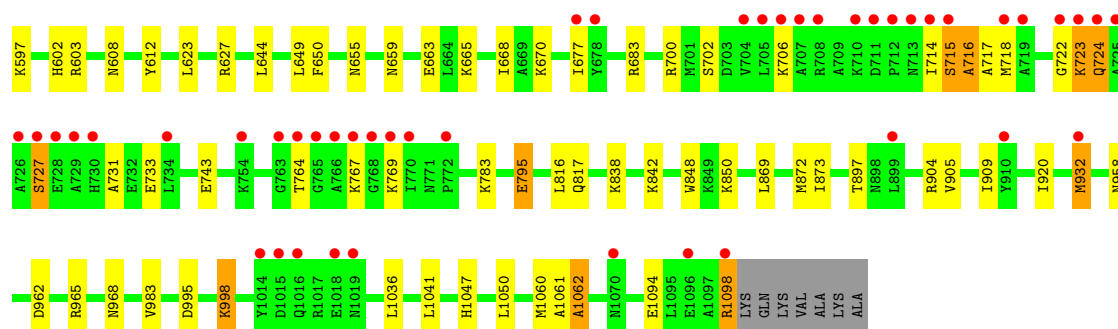
- Molecule 6 is PYROPHOSPHATE 2- (three-letter code: POP) (formula: $\text{H}_2\text{O}_7\text{P}_2$).



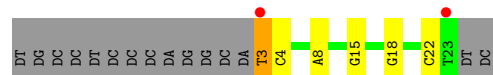
Mol	Chain	Residues	Atoms			ZeroOcc	AltConf
6	A	1	Total	O	P	0	0
			9	7	2		
6	B	1	Total	O	P	0	0
			9	7	2		

- Molecule 7 is water.

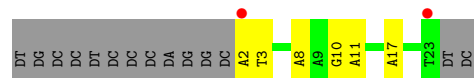
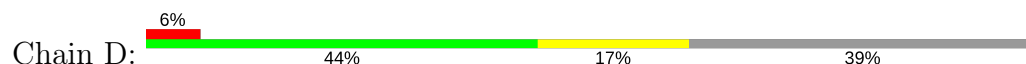
Mol	Chain	Residues	Atoms		ZeroOcc	AltConf
7	A	1055	Total	O	0	0
			1055	1055		
7	B	1167	Total	O	0	0
			1167	1167		
7	C	81	Total	O	0	0
			81	81		
7	D	96	Total	O	0	0
			96	96		



● Molecule 2: DNA (5'-D(*TP*GP*CP*CP*TP*CP*CP*CP*AP*GP*GP*CP*AP*TP*CP*CP*AP*AP*AP*AP*GP*AP*AP*GP*CP*GP*GP*AP*GP*CP*TP*TP*CP*TP*TP*C)-3')



● Molecule 2: DNA (5'-D(*TP*GP*CP*CP*TP*CP*CP*CP*AP*GP*GP*CP*AP*TP*CP*CP*AP*AP*AP*AP*GP*AP*AP*GP*CP*GP*GP*AP*GP*CP*TP*TP*CP*TP*TP*C)-3')



4 Data and refinement statistics

Property	Value	Source
Space group	P 21 21 21	Depositor
Cell constants a, b, c, α , β , γ	83.46Å 111.79Å 277.01Å 90.00° 90.00° 90.00°	Depositor
Resolution (Å)	41.49 – 1.81 41.49 – 1.81	Depositor EDS
% Data completeness (in resolution range)	98.9 (41.49-1.81) 98.9 (41.49-1.81)	Depositor EDS
R_{merge}	0.07	Depositor
R_{sym}	(Not available)	Depositor
$\langle I/\sigma(I) \rangle$ ¹	2.16 (at 1.81Å)	Xtriage
Refinement program	REFMAC 5.2.0019	Depositor
R, R_{free}	0.201 , 0.235 0.199 , 0.234	Depositor DCC
R_{free} test set	11695 reflections (5.28%)	DCC
Wilson B-factor (Å ²)	28.1	Xtriage
Anisotropy	0.032	Xtriage
Bulk solvent k_{sol} (e/Å ³), B_{sol} (Å ²)	0.34 , 46.9	EDS
L-test for twinning ²	$\langle L \rangle = 0.49$, $\langle L^2 \rangle = 0.32$	Xtriage
Estimated twinning fraction	No twinning to report.	Xtriage
F_o, F_c correlation	0.96	EDS
Total number of atoms	20260	wwPDB-VP
Average B, all atoms (Å ²)	32.0	wwPDB-VP

Xtriage's analysis on translational NCS is as follows: *The largest off-origin peak in the Patterson function is 2.61% of the height of the origin peak. No significant pseudotranslation is detected.*

¹Intensities estimated from amplitudes.

²Theoretical values of $\langle |L| \rangle$, $\langle L^2 \rangle$ for acentric reflections are 0.5, 0.333 respectively for untwinned datasets, and 0.375, 0.2 for perfectly twinned datasets.

5 Model quality

5.1 Standard geometry

Bond lengths and bond angles in the following residue types are not validated in this section: GTP, 2HP, POP

The Z score for a bond length (or angle) is the number of standard deviations the observed value is removed from the expected value. A bond length (or angle) with $|Z| > 5$ is considered an outlier worth inspection. RMSZ is the root-mean-square of all Z scores of the bond lengths (or angles).

Mol	Chain	Bond lengths		Bond angles	
		RMSZ	$\# Z > 5$	RMSZ	$\# Z > 5$
1	A	0.38	0/8583	0.53	2/11609 (0.0%)
1	B	0.38	0/8572	0.54	0/11596
2	C	0.73	1/485 (0.2%)	1.29	3/746 (0.4%)
2	D	0.68	0/505	1.24	1/778 (0.1%)
All	All	0.40	1/18145 (0.0%)	0.60	6/24729 (0.0%)

Chiral center outliers are detected by calculating the chiral volume of a chiral center and verifying if the center is modelled as a planar moiety or with the opposite hand. A planarity outlier is detected by checking planarity of atoms in a peptide group, atoms in a mainchain group or atoms of a sidechain that are expected to be planar.

Mol	Chain	#Chirality outliers	#Planarity outliers
1	B	0	1

All (1) bond length outliers are listed below:

Mol	Chain	Res	Type	Atoms	Z	Observed(Å)	Ideal(Å)
2	C	3	DT	C1'-N1	5.20	1.56	1.49

All (6) bond angle outliers are listed below:

Mol	Chain	Res	Type	Atoms	Z	Observed(°)	Ideal(°)
2	C	18	DG	O4'-C1'-N9	5.82	112.07	108.00
2	C	22	DC	O4'-C1'-N1	5.48	111.84	108.00
2	D	17	DA	O4'-C1'-N9	-5.33	104.27	108.00
1	A	540	ARG	NE-CZ-NH1	5.32	122.96	120.30
2	C	15	DG	P-O3'-C3'	5.12	125.85	119.70
1	A	540	ARG	NE-CZ-NH2	-5.02	117.79	120.30

There are no chirality outliers.

All (1) planarity outliers are listed below:

Mol	Chain	Res	Type	Group
1	B	727	SER	Peptide

5.2 Too-close contacts

In the following table, the Non-H and H(model) columns list the number of non-hydrogen atoms and hydrogen atoms in the chain respectively. The H(added) column lists the number of hydrogen atoms added and optimized by MolProbity. The Clashes column lists the number of clashes within the asymmetric unit, whereas Symm-Clashes lists symmetry related clashes.

Mol	Chain	Non-H	H(model)	H(added)	Clashes	Symm-Clashes
1	A	8454	0	8479	113	0
1	B	8443	0	8465	90	0
2	C	432	0	236	2	0
2	D	449	0	245	4	0
3	A	32	0	11	0	0
4	A	23	0	12	1	0
5	A	5	0	0	0	0
5	B	5	0	0	1	0
6	A	9	0	0	2	0
6	B	9	0	0	0	0
7	A	1055	0	0	10	0
7	B	1167	0	0	15	0
7	C	81	0	0	3	0
7	D	96	0	0	3	0
All	All	20260	0	17448	206	0

The all-atom clashscore is defined as the number of clashes found per 1000 atoms (including hydrogen atoms). The all-atom clashscore for this structure is 6.

All (206) close contacts within the same asymmetric unit are listed below, sorted by their clash magnitude.

Atom-1	Atom-2	Interatomic distance (Å)	Clash overlap (Å)
1:B:469:GLN:HE22	1:B:557:GLU:H	1.11	0.98
1:A:561:VAL:HA	6:A:1109:POP:O6	1.68	0.93
1:A:469:GLN:HE22	1:A:557:GLU:H	1.11	0.93
1:A:866:LEU:HD12	7:A:2137:HOH:O	1.70	0.91
1:B:499:ILE:HG13	7:B:2872:HOH:O	1.67	0.91
1:A:701:MET:HA	1:A:701:MET:HE2	1.53	0.89
1:A:603:ARG:NH1	1:A:608:ASN:OD1	2.07	0.88

Continued on next page...

Continued from previous page...

Atom-1	Atom-2	Interatomic distance (Å)	Clash overlap (Å)
1:A:1017:ARG:HH11	1:A:1017:ARG:HG2	1.39	0.87
1:A:336:GLN:HE21	1:A:417:TYR:H	1.24	0.85
1:B:603:ARG:NH1	1:B:608:ASN:OD1	2.10	0.84
1:A:790:LEU:O	1:A:795:GLU:HG2	1.82	0.79
1:B:700:ARG:CZ	1:B:723:LYS:HG3	2.15	0.77
1:A:1017:ARG:HG2	1:A:1017:ARG:NH1	1.98	0.77
1:B:850:LYS:O	7:B:2876:HOH:O	2.02	0.77
1:A:351:GLU:HG3	1:A:395:PHE:CE2	2.22	0.74
1:B:476:HIS:ND1	5:B:1106:2HP:O4	2.17	0.74
1:B:336:GLN:HE21	1:B:417:TYR:H	1.34	0.73
1:A:421:ARG:HD2	7:C:68:HOH:O	1.86	0.73
1:A:364:ALA:H	1:A:384:ASN:HD21	1.37	0.72
1:B:724:GLN:HA	1:B:724:GLN:OE1	1.88	0.72
1:A:364:ALA:H	1:A:384:ASN:ND2	1.89	0.71
1:B:650:PHE:HE2	1:B:700:ARG:HG3	1.55	0.70
1:A:656:LEU:HD23	7:A:2091:HOH:O	1.90	0.70
1:A:603:ARG:HB3	1:A:603:ARG:HH11	1.59	0.68
1:B:91:GLU:HG3	7:B:2063:HOH:O	1.92	0.68
1:A:127:ASN:H	1:A:127:ASN:HD22	1.42	0.66
1:A:597:LYS:NZ	1:A:602:HIS:HD2	1.92	0.66
1:B:700:ARG:NE	1:B:723:LYS:HG3	2.11	0.66
1:A:778:LYS:N	1:A:778:LYS:HD3	2.11	0.65
1:A:150:GLN:HG2	7:A:2134:HOH:O	1.97	0.64
1:B:127:ASN:H	1:B:127:ASN:HD22	1.44	0.64
1:B:364:ALA:H	1:B:384:ASN:ND2	1.96	0.64
1:A:968:ASN:HD21	1:A:1060:MET:H	1.46	0.63
1:A:191:GLU:HG2	1:A:375:ASN:HB3	1.81	0.63
1:B:449:THR:H	1:B:958:ASN:HD21	1.45	0.63
1:A:958:ASN:H	1:A:958:ASN:HD22	1.45	0.62
1:A:207:VAL:HG11	1:A:905:VAL:HG21	1.81	0.62
1:B:16:TYR:O	1:B:35:LYS:HE3	2.00	0.62
1:A:830:MET:O	1:A:834:ARG:HG2	2.00	0.61
1:B:1094:GLU:O	1:B:1098:ARG:HG2	2.01	0.60
1:A:370:GLU:HA	1:A:773:LYS:HE2	1.82	0.60
1:A:1017:ARG:HH11	1:A:1017:ARG:CG	2.13	0.60
1:A:82:ASN:C	1:A:82:ASN:HD22	2.04	0.59
1:A:627:ARG:NH2	1:A:641:ASP:OD1	2.33	0.59
1:B:364:ALA:H	1:B:384:ASN:HD21	1.51	0.59
1:A:795:GLU:HB2	1:A:796:PRO:HD3	1.85	0.59
1:B:968:ASN:HD21	1:B:1060:MET:H	1.49	0.58
1:B:447:LYS:HE2	7:B:2219:HOH:O	2.03	0.58

Continued on next page...

Continued from previous page...

Atom-1	Atom-2	Interatomic distance (Å)	Clash overlap (Å)
1:A:730:HIS:O	1:A:733:GLU:HG2	2.03	0.58
1:A:358:ILE:HD12	1:A:391:TYR:CE1	2.40	0.57
1:A:402:ARG:HA	1:A:408:ILE:HG22	1.86	0.57
1:B:421:ARG:HD2	7:D:95:HOH:O	2.05	0.56
1:B:207:VAL:HG11	1:B:905:VAL:HG21	1.88	0.56
1:A:778:LYS:H	1:A:778:LYS:HD3	1.70	0.55
1:B:82:ASN:C	1:B:82:ASN:HD22	2.10	0.55
1:B:998:LYS:HD2	7:B:2793:HOH:O	2.07	0.55
1:A:1045:ILE:HD12	1:A:1094:GLU:HG3	1.89	0.54
1:A:1017:ARG:O	1:A:1018:GLU:C	2.45	0.54
1:A:968:ASN:ND2	1:A:1060:MET:H	2.05	0.54
1:A:373:ASN:HD22	1:A:376:HIS:H	1.56	0.54
1:B:178:VAL:HG21	1:B:194:VAL:HA	1.87	0.54
1:A:603:ARG:HB3	1:A:603:ARG:NH1	2.22	0.54
1:B:13:ASP:HA	1:B:35:LYS:HE2	1.90	0.53
1:A:421:ARG:CD	7:C:68:HOH:O	2.50	0.53
1:B:848:TRP:CH2	1:B:850:LYS:HA	2.43	0.53
1:A:178:VAL:HG21	1:A:194:VAL:HA	1.91	0.52
1:A:752:LYS:HE3	1:A:755:GLY:HA2	1.91	0.52
1:B:677:ILE:O	1:B:920:ILE:HG21	2.09	0.52
1:A:597:LYS:HZ3	1:A:602:HIS:CD2	2.27	0.52
1:A:570:MET:O	1:A:1047:HIS:HE1	1.93	0.52
1:B:421:ARG:CD	7:D:95:HOH:O	2.58	0.52
1:B:650:PHE:CE2	1:B:700:ARG:HG3	2.41	0.51
1:B:665:LYS:O	1:B:668:ILE:HG13	2.10	0.51
1:B:715:SER:HB3	1:B:718:MET:H	1.76	0.51
1:B:250:THR:HG22	1:B:250:THR:O	2.10	0.51
1:A:767:LYS:HA	1:A:767:LYS:HE3	1.93	0.51
1:B:469:GLN:HE22	1:B:557:GLU:N	1.93	0.51
1:B:72:THR:O	1:B:74:LYS:HE3	2.11	0.51
1:A:1018:GLU:HG3	1:A:1019:ASN:H	1.75	0.50
1:A:816:LEU:HD13	1:A:983:VAL:HG21	1.93	0.50
1:B:5:THR:HG23	1:B:6:GLU:H	1.76	0.50
1:A:514:ASN:H	1:A:514:ASN:HD22	1.59	0.50
1:A:673:LEU:HD22	1:A:801:ILE:HG23	1.93	0.50
1:B:816:LEU:HD13	1:B:983:VAL:HG21	1.93	0.50
1:B:469:GLN:NE2	1:B:557:GLU:H	1.94	0.49
1:B:492:GLU:HG3	7:B:2367:HOH:O	2.13	0.49
1:A:351:GLU:HG3	1:A:395:PHE:HE2	1.74	0.49
1:B:597:LYS:NZ	1:B:602:HIS:HD2	2.10	0.49
1:A:747:SER:HB3	1:A:765:GLY:HA3	1.94	0.49

Continued on next page...

Continued from previous page...

Atom-1	Atom-2	Interatomic distance (Å)	Clash overlap (Å)
1:A:127:ASN:N	1:A:127:ASN:HD22	2.11	0.49
1:A:600:ASN:H	1:A:600:ASN:ND2	2.11	0.49
1:A:701:MET:HE2	1:A:701:MET:CA	2.35	0.48
1:A:1061:ALA:O	1:A:1062:ALA:HB2	2.12	0.48
1:B:968:ASN:ND2	1:B:1060:MET:H	2.11	0.48
1:B:962:ASP:HB3	7:B:2877:HOH:O	2.13	0.48
1:B:127:ASN:N	1:B:127:ASN:HD22	2.12	0.48
1:B:82:ASN:ND2	1:B:85:VAL:H	2.11	0.48
1:B:343:HIS:HE1	1:B:537:GLU:OE2	1.96	0.48
2:D:8:DA:H1'	7:D:2361:HOH:O	2.13	0.48
1:A:351:GLU:HG3	1:A:395:PHE:CZ	2.49	0.47
1:B:1061:ALA:O	1:B:1062:ALA:HB2	2.14	0.47
1:B:520:ASN:HD21	1:B:527:LYS:NZ	2.12	0.47
1:A:1012:LEU:HD11	1:A:1025:ILE:HG22	1.95	0.47
1:A:771:ASN:C	1:A:771:ASN:HD22	2.16	0.47
1:A:816:LEU:CD1	1:A:983:VAL:HG21	2.45	0.47
1:B:722:GLY:O	1:B:723:LYS:C	2.52	0.47
1:A:176:LYS:HE3	7:C:2363:HOH:O	2.14	0.47
1:B:873:ILE:HD13	1:B:983:VAL:HG22	1.96	0.47
1:A:721:PHE:HA	1:A:724:GLN:NE2	2.30	0.46
1:B:520:ASN:HD21	1:B:527:LYS:HZ3	1.63	0.46
1:B:764:THR:HG23	7:B:2597:HOH:O	2.16	0.46
1:A:393:GLN:HG2	1:A:431:TYR:HB2	1.98	0.46
1:B:523:LEU:O	1:B:526:ARG:HG3	2.15	0.46
1:A:654:ILE:HD11	1:A:668:ILE:HG21	1.98	0.46
1:A:863:GLN:CD	7:A:2137:HOH:O	2.53	0.46
1:B:715:SER:O	1:B:716:ALA:HB2	2.15	0.46
1:A:886:GLU:O	2:C:8:DA:H4'	2.15	0.46
1:A:753:ARG:HH21	1:A:760:GLN:HE22	1.64	0.46
1:A:343:HIS:HE1	1:A:537:GLU:OE2	1.98	0.46
1:B:724:GLN:CA	1:B:724:GLN:OE1	2.59	0.46
1:B:743:GLU:HG3	7:B:2891:HOH:O	2.15	0.45
1:A:52:GLU:H	1:A:52:GLU:CD	2.20	0.45
1:B:355:LYS:HD2	1:B:388:GLU:HG3	1.97	0.45
1:A:47:ARG:NE	7:A:2103:HOH:O	2.49	0.45
1:A:619:LEU:HD22	1:A:797:LEU:HD13	1.99	0.45
1:B:50:GLY:H	1:B:150:GLN:NE2	2.14	0.45
1:A:791:HIS:HA	1:A:795:GLU:HG3	1.98	0.45
1:A:267:LYS:HB2	1:A:267:LYS:HE2	1.72	0.45
2:D:2:DA:H2''	2:D:3:DT:C6	2.52	0.45
1:A:469:GLN:NE2	1:A:557:GLU:H	1.95	0.44

Continued on next page...

Continued from previous page...

Atom-1	Atom-2	Interatomic distance (Å)	Clash overlap (Å)
1:A:721:PHE:HA	1:A:724:GLN:HE21	1.81	0.44
1:B:714:ILE:HG13	1:B:715:SER:N	2.33	0.44
1:A:563:ASN:HD21	1:A:929:ASP:HB3	1.83	0.44
1:A:50:GLY:H	1:A:150:GLN:NE2	2.15	0.44
1:A:597:LYS:NZ	1:A:602:HIS:CD2	2.78	0.44
1:B:269:THR:O	2:D:11:DA:H5'	2.17	0.44
1:B:193:LEU:HD12	1:B:196:GLN:HE21	1.83	0.44
1:B:196:GLN:O	1:B:199:THR:HG22	2.17	0.44
1:A:454:ASN:HB3	1:A:457:ASN:ND2	2.33	0.44
1:B:838:LYS:O	1:B:842:LYS:HG2	2.18	0.44
1:A:499:ILE:HD12	1:A:538:TYR:HD2	1.83	0.43
1:A:764:THR:HG21	1:A:780:GLU:HB3	2.00	0.43
1:A:7:GLU:H	1:A:7:GLU:HG2	1.69	0.43
1:B:376:HIS:HD2	1:B:702:SER:OG	2.01	0.43
1:A:426:GLN:NE2	7:A:2073:HOH:O	2.52	0.43
1:A:965:ARG:HD2	7:A:2035:HOH:O	2.18	0.43
1:B:655:ASN:HB2	1:B:663:GLU:HB3	2.01	0.43
1:A:1045:ILE:HD12	1:A:1094:GLU:CG	2.48	0.43
1:B:319:ASN:HD22	1:B:319:ASN:HA	1.67	0.43
1:B:715:SER:O	1:B:716:ALA:CB	2.66	0.43
1:A:562:THR:HG22	1:A:612:TYR:CZ	2.54	0.43
1:B:50:GLY:H	1:B:150:GLN:HE22	1.67	0.43
2:C:3:DT:H4'	2:C:4:DC:OP1	2.19	0.43
1:A:492:GLU:HG3	7:A:2077:HOH:O	2.19	0.42
1:A:82:ASN:ND2	1:A:85:VAL:H	2.17	0.42
1:B:16:TYR:O	1:B:35:LYS:CE	2.66	0.42
1:B:496:LYS:HB3	1:B:497:PRO:HD3	2.00	0.42
1:A:1061:ALA:O	1:A:1062:ALA:CB	2.67	0.42
1:B:932:MET:HE2	7:B:1771:HOH:O	2.19	0.42
1:B:162:TRP:HE1	1:B:209:SER:HB3	1.84	0.42
1:A:668:ILE:H	1:A:668:ILE:HG13	1.66	0.42
1:B:1061:ALA:O	1:B:1062:ALA:CB	2.68	0.42
1:B:965:ARG:HG2	7:B:2065:HOH:O	2.20	0.42
1:A:565:PRO:CG	1:A:673:LEU:HD12	2.50	0.42
1:A:951:ASP:OD2	4:A:1107:G:H5'	2.20	0.42
1:B:612:TYR:CZ	1:B:670:LYS:HG2	2.55	0.42
1:A:454:ASN:OD1	1:A:456:ASN:HB2	2.20	0.42
1:A:707:ALA:HA	1:A:710:LYS:HE3	2.01	0.42
7:B:2871:HOH:O	2:D:10:DG:H5''	2.19	0.42
1:A:1047:HIS:HD2	7:A:1249:HOH:O	2.01	0.42
1:B:717:ALA:HB1	1:B:731:ALA:C	2.40	0.42

Continued on next page...

Continued from previous page...

Atom-1	Atom-2	Interatomic distance (Å)	Clash overlap (Å)
1:A:113:THR:HG22	1:A:114:LYS:HG3	2.02	0.41
1:A:267:LYS:H	1:A:267:LYS:HD3	1.85	0.41
1:A:677:ILE:HD11	1:A:805:VAL:HG11	2.01	0.41
1:B:677:ILE:HG22	7:B:2870:HOH:O	2.19	0.41
1:A:393:GLN:HG2	1:A:431:TYR:CB	2.50	0.41
1:A:342:VAL:HG11	1:A:408:ILE:HD12	2.02	0.41
1:A:598:THR:HG22	1:A:1066:PRO:HD3	2.03	0.41
1:A:304:PHE:HB3	1:A:308:ASP:O	2.20	0.41
1:A:562:THR:N	6:A:1109:POP:O6	2.50	0.41
1:A:95:HIS:HA	1:B:248:GLU:O	2.21	0.41
1:B:5:THR:HG23	1:B:6:GLU:N	2.35	0.41
1:B:897:THR:HG22	1:B:904:ARG:HG2	2.02	0.41
1:B:995:ASP:OD2	1:B:998:LYS:HE3	2.21	0.41
1:B:37:SER:HB3	1:B:231:THR:HG22	2.03	0.41
1:B:267:LYS:HA	1:B:267:LYS:HE2	2.03	0.41
1:B:397:VAL:O	1:B:401:VAL:HG23	2.21	0.41
1:A:351:GLU:CG	1:A:395:PHE:CE2	3.01	0.41
1:A:397:VAL:O	1:A:401:VAL:HG23	2.20	0.41
1:A:677:ILE:O	1:A:920:ILE:HG21	2.21	0.41
1:B:351:GLU:HG2	1:B:395:PHE:CE2	2.56	0.41
1:A:6:GLU:HG2	7:A:2104:HOH:O	2.21	0.41
1:A:603:ARG:HD2	1:A:603:ARG:HA	1.90	0.40
1:A:649:LEU:HD13	1:A:737:ARG:NH2	2.35	0.40
1:A:82:ASN:C	1:A:82:ASN:ND2	2.74	0.40
1:B:89:TYR:CZ	1:B:290:ALA:HB3	2.56	0.40
1:B:627:ARG:HH21	1:B:644:LEU:HD12	1.86	0.40
1:A:393:GLN:HG2	1:A:431:TYR:CD2	2.56	0.40
1:B:322:VAL:HG22	1:B:872:MET:CE	2.51	0.40
1:A:141:ASP:HB2	1:A:146:LYS:HG2	2.03	0.40
1:A:384:ASN:HD22	1:A:384:ASN:HA	1.66	0.40
1:B:570:MET:O	1:B:1047:HIS:HE1	2.03	0.40
1:B:22:THR:HG23	7:B:2299:HOH:O	2.20	0.40
1:B:343:HIS:CD2	1:B:553:PRO:HG3	2.57	0.40
1:A:261:GLU:HG2	1:A:261:GLU:H	1.70	0.40
1:B:795:GLU:HB2	7:B:2854:HOH:O	2.21	0.40

There are no symmetry-related clashes.

5.3 Torsion angles

5.3.1 Protein backbone

In the following table, the Percentiles column shows the percent Ramachandran outliers of the chain as a percentile score with respect to all X-ray entries followed by that with respect to entries of similar resolution.

The Analysed column shows the number of residues for which the backbone conformation was analysed, and the total number of residues.

Mol	Chain	Analysed	Favoured	Allowed	Outliers	Percentiles	
1	A	1093/1117 (98%)	1067 (98%)	23 (2%)	3 (0%)	44	28
1	B	1092/1117 (98%)	1063 (97%)	23 (2%)	6 (0%)	32	17
All	All	2185/2234 (98%)	2130 (98%)	46 (2%)	9 (0%)	38	22

All (9) Ramachandran outliers are listed below:

Mol	Chain	Res	Type
1	A	1018	GLU
1	B	716	ALA
1	B	723	LYS
1	B	769	LYS
1	A	370	GLU
1	A	1062	ALA
1	B	1062	ALA
1	B	659	ASN
1	B	767	LYS

5.3.2 Protein sidechains

In the following table, the Percentiles column shows the percent sidechain outliers of the chain as a percentile score with respect to all X-ray entries followed by that with respect to entries of similar resolution.

The Analysed column shows the number of residues for which the sidechain conformation was analysed, and the total number of residues.

Mol	Chain	Analysed	Rotameric	Outliers	Percentiles	
1	A	916/934 (98%)	877 (96%)	39 (4%)	33	16
1	B	915/934 (98%)	882 (96%)	33 (4%)	40	23
All	All	1831/1868 (98%)	1759 (96%)	72 (4%)	37	19

All (72) residues with a non-rotameric sidechain are listed below:

Mol	Chain	Res	Type
1	A	52	GLU
1	A	70	LEU
1	A	82	ASN
1	A	88	ARG
1	A	127	ASN
1	A	163	ARG
1	A	250	THR
1	A	261	GLU
1	A	267	LYS
1	A	272	LEU
1	A	319	ASN
1	A	368	ASN
1	A	372	LEU
1	A	405	SER
1	A	421	ARG
1	A	472	ASP
1	A	494	ASN
1	A	514	ASN
1	A	600	ASN
1	A	603	ARG
1	A	623	LEU
1	A	649	LEU
1	A	668	ILE
1	A	708	ARG
1	A	728	GLU
1	A	767	LYS
1	A	771	ASN
1	A	778	LYS
1	A	817	GLN
1	A	958	ASN
1	A	1004	LEU
1	A	1017	ARG
1	A	1019	ASN
1	A	1025	ILE
1	A	1036	LEU
1	A	1041	LEU
1	A	1050	LEU
1	A	1055	LEU
1	A	1096	GLU
1	B	52	GLU
1	B	70	LEU
1	B	82	ASN

Continued on next page...

Continued from previous page...

Mol	Chain	Res	Type
1	B	124	THR
1	B	127	ASN
1	B	163	ARG
1	B	213	LYS
1	B	319	ASN
1	B	421	ARG
1	B	427	MET
1	B	471	LEU
1	B	472	ASP
1	B	514	ASN
1	B	520	ASN
1	B	623	LEU
1	B	649	LEU
1	B	683	ARG
1	B	706	LYS
1	B	715	SER
1	B	724	GLN
1	B	727	SER
1	B	733	GLU
1	B	783	LYS
1	B	795	GLU
1	B	817	GLN
1	B	869	LEU
1	B	909	ILE
1	B	932	MET
1	B	998	LYS
1	B	1036	LEU
1	B	1041	LEU
1	B	1050	LEU
1	B	1098	ARG

Some sidechains can be flipped to improve hydrogen bonding and reduce clashes. All (78) such sidechains are listed below:

Mol	Chain	Res	Type
1	A	82	ASN
1	A	127	ASN
1	A	150	GLN
1	A	316	GLN
1	A	319	ASN
1	A	324	ASN
1	A	336	GLN
1	A	343	HIS

Continued on next page...

Continued from previous page...

Mol	Chain	Res	Type
1	A	348	GLN
1	A	368	ASN
1	A	373	ASN
1	A	375	ASN
1	A	384	ASN
1	A	414	HIS
1	A	455	GLN
1	A	457	ASN
1	A	469	GLN
1	A	506	ASN
1	A	514	ASN
1	A	563	ASN
1	A	600	ASN
1	A	602	HIS
1	A	613	GLN
1	A	629	ASN
1	A	639	GLN
1	A	724	GLN
1	A	760	GLN
1	A	771	ASN
1	A	781	GLN
1	A	815	GLN
1	A	817	GLN
1	A	823	GLN
1	A	833	GLN
1	A	863	GLN
1	A	878	GLN
1	A	958	ASN
1	A	968	ASN
1	A	1035	ASN
1	A	1038	ASN
1	A	1047	HIS
1	A	1059	GLN
1	B	82	ASN
1	B	122	GLN
1	B	127	ASN
1	B	140	GLN
1	B	150	GLN
1	B	186	GLN
1	B	196	GLN
1	B	314	ASN
1	B	316	GLN

Continued on next page...

Continued from previous page...

Mol	Chain	Res	Type
1	B	319	ASN
1	B	324	ASN
1	B	336	GLN
1	B	343	HIS
1	B	348	GLN
1	B	375	ASN
1	B	376	HIS
1	B	384	ASN
1	B	414	HIS
1	B	469	GLN
1	B	506	ASN
1	B	514	ASN
1	B	520	ASN
1	B	563	ASN
1	B	602	HIS
1	B	629	ASN
1	B	639	GLN
1	B	781	GLN
1	B	786	GLN
1	B	817	GLN
1	B	833	GLN
1	B	878	GLN
1	B	893	GLN
1	B	914	GLN
1	B	958	ASN
1	B	968	ASN
1	B	1047	HIS
1	B	1059	GLN

5.3.3 RNA ⓘ

There are no RNA molecules in this entry.

5.4 Non-standard residues in protein, DNA, RNA chains ⓘ

There are no non-standard protein/DNA/RNA residues in this entry.

5.5 Carbohydrates ⓘ

There are no carbohydrates in this entry.

5.6 Ligand geometry

6 ligands are modelled in this entry.

In the following table, the Counts columns list the number of bonds (or angles) for which Mogul statistics could be retrieved, the number of bonds (or angles) that are observed in the model and the number of bonds (or angles) that are defined in the chemical component dictionary. The Link column lists molecule types, if any, to which the group is linked. The Z score for a bond length (or angle) is the number of standard deviations the observed value is removed from the expected value. A bond length (or angle) with $|Z| > 2$ is considered an outlier worth inspection. RMSZ is the root-mean-square of all Z scores of the bond lengths (or angles).

Mol	Type	Chain	Res	Link	Bond lengths			Bond angles		
					Counts	RMSZ	$\# Z > 2$	Counts	RMSZ	$\# Z > 2$
3	GTP	A	1106	4	27,34,34	0.98	1 (3%)	27,54,54	1.79	5 (18%)
4	G	A	1107	3	18,25,26	1.21	1 (5%)	19,37,40	2.65	5 (26%)
5	2HP	A	1108	-	4,4,4	4.84	2 (50%)	6,6,6	0.67	0
6	POP	A	1109	-	8,8,8	0.77	0	8,13,13	0.46	0
5	2HP	B	1106	-	4,4,4	4.85	2 (50%)	6,6,6	0.81	0
6	POP	B	1107	-	8,8,8	0.90	0	8,13,13	0.42	0

In the following table, the Chirals column lists the number of chiral outliers, the number of chiral centers analysed, the number of these observed in the model and the number defined in the chemical component dictionary. Similar counts are reported in the Torsion and Rings columns. '-' means no outliers of that kind were identified.

Mol	Type	Chain	Res	Link	Chirals	Torsions	Rings
3	GTP	A	1106	4	-	0/18/38/38	0/3/3/3
4	G	A	1107	3	-	0/3/25/26	0/3/3/3
5	2HP	A	1108	-	-	0/0/0/0	0/0/0/0
6	POP	A	1109	-	-	0/6/6/6	0/0/0/0
5	2HP	B	1106	-	-	0/0/0/0	0/0/0/0
6	POP	B	1107	-	-	0/6/6/6	0/0/0/0

All (6) bond length outliers are listed below:

Mol	Chain	Res	Type	Atoms	Z	Observed(Å)	Ideal(Å)
3	A	1106	GTP	C6-N1	3.41	1.39	1.33
4	A	1107	G	C6-N1	3.94	1.40	1.33
5	A	1108	2HP	P-O4	6.76	1.78	1.54
5	B	1106	2HP	P-O4	6.78	1.78	1.54
5	B	1106	2HP	P-O3	6.86	1.78	1.54
5	A	1108	2HP	P-O3	6.89	1.78	1.54

All (10) bond angle outliers are listed below:

Mol	Chain	Res	Type	Atoms	Z	Observed(°)	Ideal(°)
4	A	1107	G	C5-C6-N1	-8.08	111.97	123.48
3	A	1106	GTP	N3-C2-N1	-5.34	119.67	127.46
3	A	1106	GTP	C5-C6-N1	-2.80	119.50	123.48
4	A	1107	G	C2-N3-C4	-2.65	112.07	115.16
4	A	1107	G	N3-C2-N1	-2.51	123.79	127.46
4	A	1107	G	C6-C5-C4	-2.26	118.60	120.84
3	A	1106	GTP	N2-C2-N1	2.22	120.78	117.24
3	A	1106	GTP	C6-N1-C2	2.92	120.25	116.06
3	A	1106	GTP	C2-N3-C4	4.50	120.41	115.16
4	A	1107	G	C6-N1-C2	6.12	124.86	116.06

There are no chirality outliers.

There are no torsion outliers.

There are no ring outliers.

3 monomers are involved in 4 short contacts:

Mol	Chain	Res	Type	Clashes	Symm-Clashes
4	A	1107	G	1	0
6	A	1109	POP	2	0
5	B	1106	2HP	1	0

5.7 Other polymers [i](#)

There are no such residues in this entry.

5.8 Polymer linkage issues [i](#)

There are no chain breaks in this entry.

6 Fit of model and data [i](#)

6.1 Protein, DNA and RNA chains [i](#)

In the following table, the column labelled ‘#RSRZ> 2’ contains the number (and percentage) of RSRZ outliers, followed by percent RSRZ outliers for the chain as percentile scores relative to all X-ray entries and entries of similar resolution. The OWAB column contains the minimum, median, 95th percentile and maximum values of the occupancy-weighted average B-factor per residue. The column labelled ‘Q< 0.9’ lists the number of (and percentage) of residues with an average occupancy less than 0.9.

Mol	Chain	Analysed	<RSRZ>	#RSRZ>2			OWAB(Å ²)	Q<0.9
1	A	1095/1117 (98%)	0.22	56 (5%)	29	24	16, 29, 53, 79	0
1	B	1094/1117 (97%)	0.26	70 (6%)	20	16	17, 27, 54, 84	0
2	C	21/36 (58%)	0.02	2 (9%)	9	7	29, 33, 59, 102	0
2	D	22/36 (61%)	0.07	2 (9%)	10	7	24, 38, 60, 88	0
All	All	2232/2306 (96%)	0.24	130 (5%)	24	19	16, 28, 54, 102	0

All (130) RSRZ outliers are listed below:

Mol	Chain	Res	Type	RSRZ
2	C	23	DT	8.1
1	B	723	LYS	6.2
1	A	1018	GLU	6.2
1	B	727	SER	6.1
1	B	768	GLY	5.7
1	A	726	ALA	5.7
1	B	677	ILE	5.6
1	B	1014	TYR	5.3
1	A	264	PRO	5.2
1	A	1014	TYR	5.0
1	B	264	PRO	5.0
1	A	1015	ASP	4.9
2	D	23	DT	4.8
1	B	708	ARG	4.8
1	B	725	ALA	4.8
1	B	713	ASN	4.5
1	B	714	ILE	4.5
1	A	910	TYR	4.4
1	B	724	GLN	4.4
1	B	729	ALA	4.2
1	A	729	ALA	4.0

Continued on next page...

Continued from previous page...

Mol	Chain	Res	Type	RSRZ
1	A	1099	LYS	3.9
1	B	704	VAL	3.8
1	A	7	GLU	3.7
1	A	28	GLU	3.6
1	B	726	ALA	3.6
1	B	5	THR	3.6
1	B	767	LYS	3.5
1	A	727	SER	3.5
1	A	711	ASP	3.4
1	B	711	ASP	3.4
1	A	767	LYS	3.3
1	B	769	LYS	3.3
1	A	754	LYS	3.3
1	B	770	ILE	3.3
1	A	265	ASP	3.2
1	A	768	GLY	3.2
1	A	188	LEU	3.2
1	B	706	LYS	3.2
1	B	718	MET	3.2
1	B	1018	GLU	3.2
1	B	678	TYR	3.1
1	A	707	ALA	3.1
1	A	725	ALA	3.1
1	B	730	HIS	3.1
1	A	8	LEU	3.1
1	A	713	ASN	3.1
1	B	70	LEU	3.1
1	A	658	GLU	3.0
2	D	2	DA	3.0
1	A	708	ARG	3.0
1	B	734	LEU	3.0
1	B	764	THR	3.0
1	B	910	TYR	3.0
1	B	192	GLY	2.9
1	B	707	ALA	2.9
1	B	715	SER	2.9
1	A	710	LYS	2.9
1	B	710	LYS	2.8
1	A	712	PRO	2.8
1	A	10	GLU	2.8
1	A	42	GLU	2.7
1	B	42	GLU	2.7

Continued on next page...

Continued from previous page...

Mol	Chain	Res	Type	RSRZ
1	B	1015	ASP	2.7
1	A	719	ALA	2.7
1	B	6	GLU	2.7
1	B	406	GLU	2.7
1	B	705	LEU	2.7
1	B	899	LEU	2.7
1	B	8	LEU	2.6
1	A	1034	ARG	2.6
1	A	1098	ARG	2.6
1	A	657	GLY	2.6
1	B	1016	GLN	2.6
1	A	723	LYS	2.6
1	A	1100	GLN	2.6
1	B	712	PRO	2.6
1	A	730	HIS	2.6
1	A	753	ARG	2.6
1	A	267	LYS	2.5
1	B	719	ALA	2.5
1	A	406	GLU	2.5
1	B	370	GLU	2.5
1	B	754	LYS	2.5
1	B	191	GLU	2.5
1	B	260	SER	2.5
1	B	265	ASP	2.4
1	A	714	ILE	2.4
1	B	102	ILE	2.4
1	B	1096	GLU	2.4
1	A	1025	ILE	2.3
1	B	262	ILE	2.3
1	B	722	GLY	2.3
1	B	371	LEU	2.3
1	B	763	GLY	2.3
1	B	765	GLY	2.3
1	B	1019	ASN	2.2
1	B	28	GLU	2.2
1	A	26	LYS	2.2
1	A	1031	LEU	2.2
1	B	281	PHE	2.2
1	A	43	GLU	2.2
1	B	772	PRO	2.2
2	C	3	DT	2.2
1	B	74	LYS	2.2

Continued on next page...

Continued from previous page...

Mol	Chain	Res	Type	RSRZ
1	A	371	LEU	2.1
1	B	75	GLU	2.1
1	A	932	MET	2.1
1	A	262	ILE	2.1
1	B	7	GLU	2.1
1	A	1017	ARG	2.1
1	A	706	LYS	2.1
1	B	1070	ASN	2.1
1	A	75	GLU	2.1
1	B	323	ARG	2.1
1	B	242	ILE	2.1
1	A	752	LYS	2.1
1	B	932	MET	2.1
1	B	261	GLU	2.1
1	A	70	LEU	2.1
1	A	733	GLU	2.0
1	A	1096	GLU	2.0
1	B	728	GLU	2.0
1	A	281	PHE	2.0
1	B	240	ALA	2.0
1	B	766	ALA	2.0
1	A	770	ILE	2.0
1	A	718	MET	2.0
1	B	1098	ARG	2.0
1	A	1002	GLU	2.0

6.2 Non-standard residues in protein, DNA, RNA chains ⓘ

There are no non-standard protein/DNA/RNA residues in this entry.

6.3 Carbohydrates ⓘ

There are no carbohydrates in this entry.

6.4 Ligands ⓘ

In the following table, the Atoms column lists the number of modelled atoms in the group and the number defined in the chemical component dictionary. LLDF column lists the quality of electron density of the group with respect to its neighbouring residues in protein, DNA or RNA chains. The B-factors column lists the minimum, median, 95th percentile and maximum values of B factors

of atoms in the group. The column labelled 'Q < 0.9' lists the number of atoms with occupancy less than 0.9.

Mol	Type	Chain	Res	Atoms	RSCC	RSR	LLDF	B-factors(\AA^2)	Q<0.9
6	POP	B	1107	9/9	0.73	0.28	9.83	72,72,73,73	0
5	2HP	B	1106	5/5	0.88	0.23	8.35	42,43,43,43	0
6	POP	A	1109	9/9	0.69	0.33	6.67	95,95,95,95	0
3	GTP	A	1106	32/32	0.78	0.18	1.87	44,51,72,73	0
4	G	A	1107	23/24	0.78	0.17	1.16	36,39,48,49	0
5	2HP	A	1108	5/5	0.96	0.08	-1.59	32,32,34,34	0

6.5 Other polymers [i](#)

There are no such residues in this entry.