



wwPDB X-ray Structure Validation Summary Report ⓘ

Feb 13, 2017 – 11:43 am GMT

PDB ID : 1Q3A
Title : Crystal structure of the catalytic domain of human matrix metalloproteinase 10
Authors : Calderone, V.; Bertini, I.; Fragai, M.; Luchinat, C.; Mangani, S.; Terni, B.
Deposited on : 2003-07-29
Resolution : 2.10 Å(reported)

This is a wwPDB X-ray Structure Validation Summary Report for a publicly released PDB entry.

We welcome your comments at validation@mail.wwpdb.org

A user guide is available at

<http://wwpdb.org/validation/2016/XrayValidationReportHelp>

with specific help available everywhere you see the ⓘ symbol.

The following versions of software and data (see [references ⓘ](#)) were used in the production of this report:

MolProbity : 4.02b-467
Mogul : 1.7.2 (RC1), CSD as538be (2017)
Xtriage (Phenix) : 1.9-1692
EDS : trunk28620
Percentile statistics : 20161228.v01 (using entries in the PDB archive December 28th 2016)
Refmac : 5.8.0135
CCP4 : 6.5.0
Ideal geometry (proteins) : Engh & Huber (2001)
Ideal geometry (DNA, RNA) : Parkinson et al. (1996)
Validation Pipeline (wwPDB-VP) : recalc28949

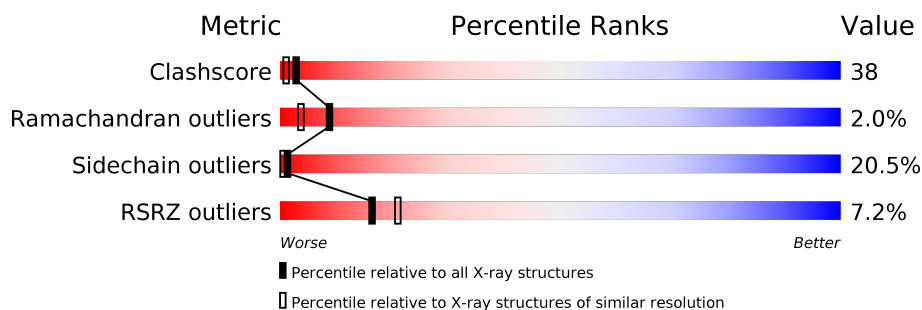
1 Overall quality at a glance ⓘ

The following experimental techniques were used to determine the structure:

X-RAY DIFFRACTION

The reported resolution of this entry is 2.10 Å.

Percentile scores (ranging between 0-100) for global validation metrics of the entry are shown in the following graphic. The table shows the number of entries on which the scores are based.



Metric	Whole archive (#Entries)	Similar resolution (#Entries, resolution range(Å))
Clashscore	112137	4788 (2.10-2.10)
Ramachandran outliers	110173	4740 (2.10-2.10)
Sidechain outliers	110143	4741 (2.10-2.10)
RSRZ outliers	101464	4275 (2.10-2.10)

The table below summarises the geometric issues observed across the polymeric chains and their fit to the electron density. The red, orange, yellow and green segments on the lower bar indicate the fraction of residues that contain outliers for ≥ 3 , 2, 1 and 0 types of geometric quality criteria. A grey segment represents the fraction of residues that are not modelled. The numeric value for each fraction is indicated below the corresponding segment, with a dot representing fractions $\leq 5\%$. The upper red bar (where present) indicates the fraction of residues that have poor fit to the electron density. The numeric value is given above the bar.

Mol	Chain	Length	Quality of chain
1	A	165	<div> <div>6%</div> <div>47% 39% 6% • 5%</div> </div>
1	B	165	<div> <div>6%</div> <div>45% 35% 15% • •</div> </div>
1	C	165	<div> <div>8%</div> <div>39% 37% 15% • 6%</div> </div>

The following table lists non-polymeric compounds, carbohydrate monomers and non-standard residues in protein, DNA, RNA chains that are outliers for geometric or electron-density-fit criteria:

Mol	Type	Chain	Res	Chirality	Geometry	Clashes	Electron density
4	NGH	A	480	X	-	-	X

Continued on next page...

Continued from previous page...

Mol	Type	Chain	Res	Chirality	Geometry	Clashes	Electron density
4	NGH	B	479	X	-	-	-
4	NGH	C	481	X	X	X	-

2 Entry composition

There are 5 unique types of molecules in this entry. The entry contains 4175 atoms, of which 0 are hydrogens and 0 are deuteriums.

In the tables below, the ZeroOcc column contains the number of atoms modelled with zero occupancy, the AltConf column contains the number of residues with at least one atom in alternate conformation and the Trace column contains the number of residues modelled with at most 2 atoms.

- Molecule 1 is a protein called Stromelysin-2.

Mol	Chain	Residues	Atoms					ZeroOcc	AltConf	Trace
1	A	156	Total	C	N	O	S	0	0	0
			1241	793	205	240	3			
1	B	160	Total	C	N	O	S	0	0	0
			1272	813	209	247	3			
1	C	155	Total	C	N	O	S	0	0	0
			1233	788	204	239	2			

There are 3 discrepancies between the modelled and reference sequences:

Chain	Residue	Modelled	Actual	Comment	Reference
A	170	ASN	PHE	ENGINEERED	UNP P09238
B	170	ASN	PHE	ENGINEERED	UNP P09238
C	170	ASN	PHE	ENGINEERED	UNP P09238

- Molecule 2 is ZINC ION (three-letter code: ZN) (formula: Zn).

Mol	Chain	Residues	Atoms		ZeroOcc	AltConf
2	B	2	Total	Zn	0	0
			2	2		
2	A	2	Total	Zn	0	0
			2	2		
2	C	2	Total	Zn	0	0
			2	2		

- Molecule 3 is CALCIUM ION (three-letter code: CA) (formula: Ca).

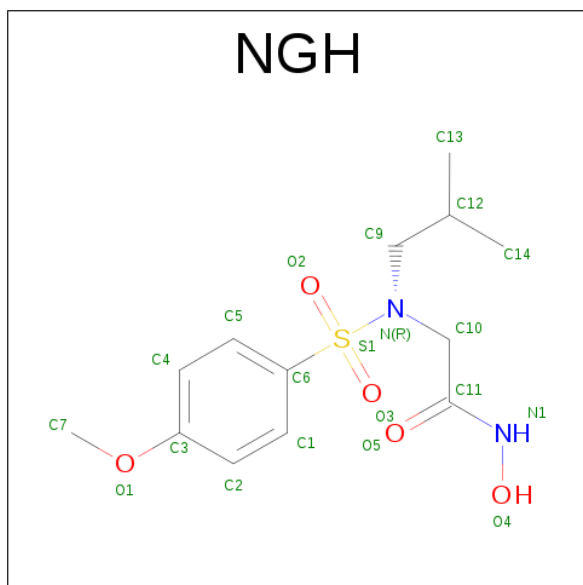
Mol	Chain	Residues	Atoms		ZeroOcc	AltConf
3	B	3	Total	Ca	0	0
			3	3		
3	A	3	Total	Ca	0	0
			3	3		

Continued on next page...

Continued from previous page...

Mol	Chain	Residues	Atoms		ZeroOcc	AltConf
3	C	3	Total	Ca	0	0
			3	3		

- Molecule 4 is N-ISOBUTYL-N-[4-METHOXYPHENYLSULFONYL]GLYCYL HYDROXY-AMIC ACID (three-letter code: NGH) (formula: C₁₃H₂₀N₂O₅S).



Mol	Chain	Residues	Atoms					ZeroOcc	AltConf
4	B	1	Total	C	N	O	S	0	0
			21	13	2	5	1		
4	A	1	Total	C	N	O	S	0	0
			21	13	2	5	1		
4	C	1	Total	C	N	O	S	0	0
			21	13	2	5	1		

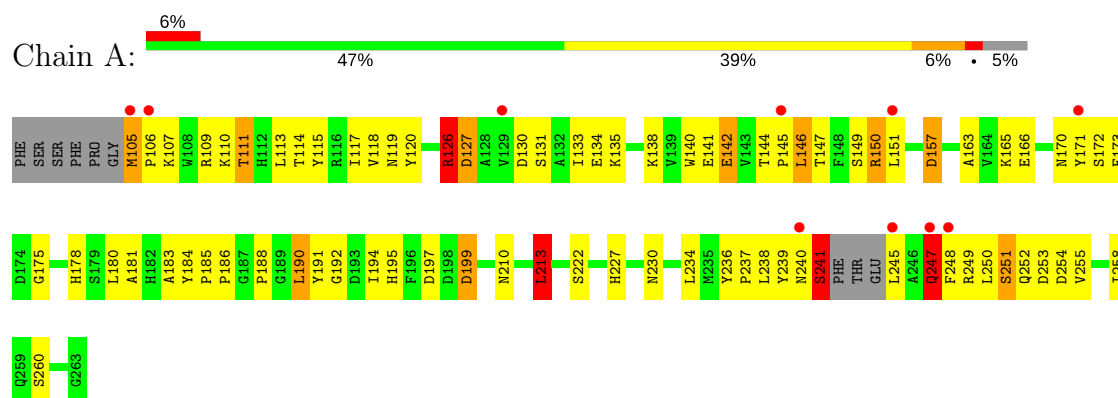
- Molecule 5 is water.

Mol	Chain	Residues	Atoms		ZeroOcc	AltConf
5	A	150	Total	O	0	0
			150	150		
5	B	126	Total	O	0	0
			126	126		
5	C	75	Total	O	0	0
			75	75		

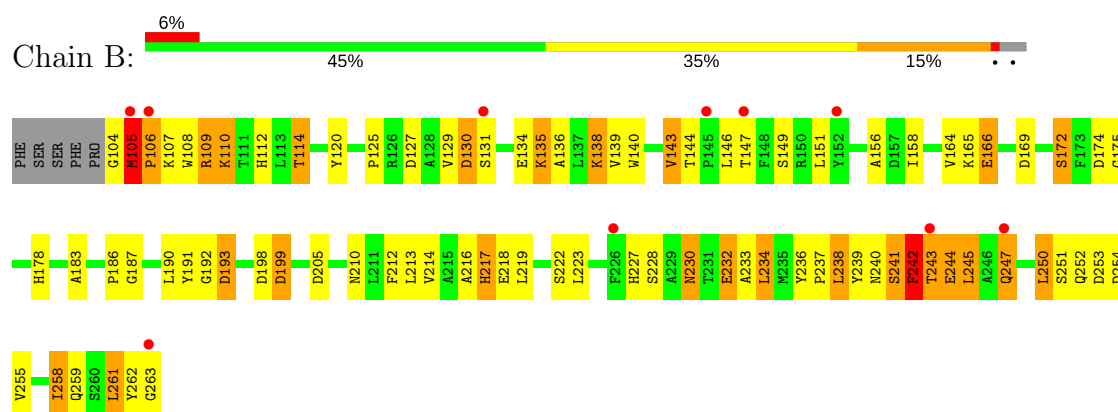
3 Residue-property plots

These plots are drawn for all protein, RNA and DNA chains in the entry. The first graphic for a chain summarises the proportions of the various outlier classes displayed in the second graphic. The second graphic shows the sequence view annotated by issues in geometry and electron density. Residues are color-coded according to the number of geometric quality criteria for which they contain at least one outlier: green = 0, yellow = 1, orange = 2 and red = 3 or more. A red dot above a residue indicates a poor fit to the electron density ($RSRZ > 2$). Stretches of 2 or more consecutive residues without any outlier are shown as a green connector. Residues present in the sample, but not in the model, are shown in grey.

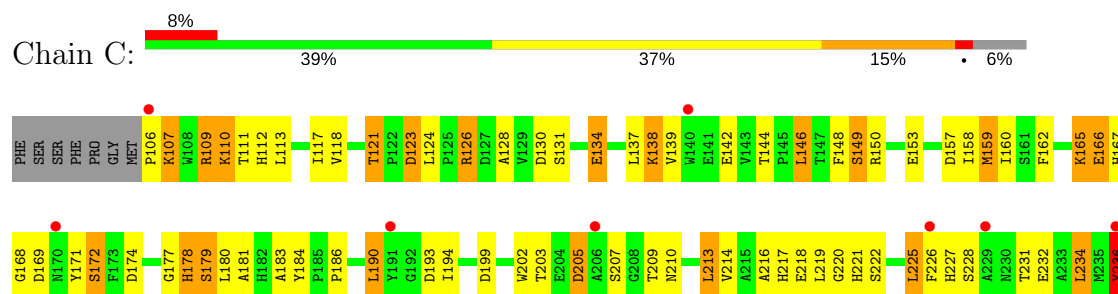
• Molecule 1: Stromelysin-2

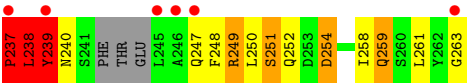


• Molecule 1: Stromelysin-2



• Molecule 1: Stromelysin-2





4 Data and refinement statistics

Property	Value	Source
Space group	C 1 2 1	Depositor
Cell constants a, b, c, α , β , γ	117.15Å 61.14Å 68.59Å 90.00° 108.68° 90.00°	Depositor
Resolution (Å)	51.30 – 2.10 18.88 – 2.10	Depositor EDS
% Data completeness (in resolution range)	100.0 (51.30-2.10) 93.6 (18.88-2.10)	Depositor EDS
R_{merge}	0.14	Depositor
R_{sym}	0.14	Depositor
$\langle I/\sigma(I) \rangle$ ¹	1.64 (at 2.11Å)	Xtriage
Refinement program	REFMAC 5.1.24	Depositor
R, R_{free}	0.276 , 0.298 0.270 , (Not available)	Depositor DCC
R_{free} test set	No test flags present.	DCC
Wilson B-factor (Å ²)	24.2	Xtriage
Anisotropy	0.606	Xtriage
Bulk solvent k_{sol} (e/Å ³), B_{sol} (Å ²)	0.32 , 67.9	EDS
L-test for twinning ²	$\langle L \rangle = 0.47$, $\langle L^2 \rangle = 0.30$	Xtriage
Estimated twinning fraction	No twinning to report.	Xtriage
F_o, F_c correlation	0.90	EDS
Total number of atoms	4175	wwPDB-VP
Average B, all atoms (Å ²)	37.0	wwPDB-VP

Xtriage's analysis on translational NCS is as follows: *The largest off-origin peak in the Patterson function is 8.32% of the height of the origin peak. No significant pseudotranslation is detected.*

¹Intensities estimated from amplitudes.

²Theoretical values of $\langle |L| \rangle$, $\langle L^2 \rangle$ for acentric reflections are 0.5, 0.333 respectively for untwinned datasets, and 0.375, 0.2 for perfectly twinned datasets.

5 Model quality

5.1 Standard geometry

Bond lengths and bond angles in the following residue types are not validated in this section: ZN, NGH, CA

The Z score for a bond length (or angle) is the number of standard deviations the observed value is removed from the expected value. A bond length (or angle) with $|Z| > 5$ is considered an outlier worth inspection. RMSZ is the root-mean-square of all Z scores of the bond lengths (or angles).

Mol	Chain	Bond lengths		Bond angles	
		RMSZ	$\# Z > 5$	RMSZ	$\# Z > 5$
1	A	0.79	1/1278 (0.1%)	1.10	5/1738 (0.3%)
1	B	0.90	3/1311 (0.2%)	1.11	9/1784 (0.5%)
1	C	1.31	3/1270 (0.2%)	1.18	14/1727 (0.8%)
All	All	1.02	7/3859 (0.2%)	1.13	28/5249 (0.5%)

Chiral center outliers are detected by calculating the chiral volume of a chiral center and verifying if the center is modelled as a planar moiety or with the opposite hand. A planarity outlier is detected by checking planarity of atoms in a peptide group, atoms in a mainchain group or atoms of a sidechain that are expected to be planar.

Mol	Chain	#Chirality outliers	#Planarity outliers
1	A	0	1
1	B	0	4
1	C	0	4
All	All	0	9

The worst 5 of 7 bond length outliers are listed below:

Mol	Chain	Res	Type	Atoms	Z	Observed(Å)	Ideal(Å)
1	C	236	TYR	C-O	35.08	1.90	1.23
1	C	237	PRO	CG-CD	11.14	1.87	1.50
1	C	237	PRO	N-CD	9.94	1.61	1.47
1	B	244	GLU	N-CA	9.90	1.66	1.46
1	A	241	SER	CB-OG	6.62	1.50	1.42

The worst 5 of 28 bond angle outliers are listed below:

Mol	Chain	Res	Type	Atoms	Z	Observed(°)	Ideal(°)
1	C	237	PRO	N-CD-CG	-11.02	86.67	103.20
1	C	236	TYR	CA-C-N	10.93	147.69	117.10

Continued on next page...

Continued from previous page...

Mol	Chain	Res	Type	Atoms	Z	Observed(°)	Ideal(°)
1	C	236	TYR	CA-C-O	-10.70	97.63	120.10
1	C	123	ASP	CB-CG-OD2	8.13	125.61	118.30
1	B	253	ASP	CB-CG-OD2	8.05	125.55	118.30

There are no chirality outliers.

5 of 9 planarity outliers are listed below:

Mol	Chain	Res	Type	Group
1	A	247	GLN	Peptide
1	B	105	MET	Peptide
1	B	120	TYR	Peptide
1	B	242	PHE	Peptide
1	B	243	THR	Peptide

5.2 Too-close contacts

In the following table, the Non-H and H(model) columns list the number of non-hydrogen atoms and hydrogen atoms in the chain respectively. The H(added) column lists the number of hydrogen atoms added and optimized by MolProbity. The Clashes column lists the number of clashes within the asymmetric unit, whereas Symm-Clashes lists symmetry related clashes.

Mol	Chain	Non-H	H(model)	H(added)	Clashes	Symm-Clashes
1	A	1241	0	1161	58	2
1	B	1272	0	1187	105	0
1	C	1233	0	1153	110	2
2	A	2	0	0	0	0
2	B	2	0	0	0	0
2	C	2	0	0	0	0
3	A	3	0	0	0	0
3	B	3	0	0	0	0
3	C	3	0	0	0	0
4	A	21	0	19	4	0
4	B	21	0	19	7	0
4	C	21	0	20	25	0
5	A	150	0	0	12	0
5	B	126	0	0	28	0
5	C	75	0	0	15	0
All	All	4175	0	3559	284	2

The all-atom clashscore is defined as the number of clashes found per 1000 atoms (including hydrogen atoms). The all-atom clashscore for this structure is 38.

The worst 5 of 284 close contacts within the same asymmetric unit are listed below, sorted by their clash magnitude.

Atom-1	Atom-2	Interatomic distance (Å)	Clash overlap (Å)
4:C:481:NGH:C11	4:C:481:NGH:N1	1.68	1.54
1:C:237:PRO:CD	1:C:237:PRO:CG	1.87	1.50
4:C:481:NGH:C9	4:C:481:NGH:N	1.82	1.42
4:B:479:NGH:O1	4:B:479:NGH:C7	1.69	1.39
1:C:236:TYR:O	1:C:236:TYR:C	1.90	1.10

All (2) symmetry-related close contacts are listed below. The label for Atom-2 includes the symmetry operator and encoded unit-cell translations to be applied.

Atom-1	Atom-2	Interatomic distance (Å)	Clash overlap (Å)
1:A:166:GLU:OE2	1:C:168:GLY:O[4_556]	2.07	0.13
1:A:166:GLU:OE1	1:C:168:GLY:O[4_556]	2.19	0.01

5.3 Torsion angles ⓘ

5.3.1 Protein backbone ⓘ

In the following table, the Percentiles column shows the percent Ramachandran outliers of the chain as a percentile score with respect to all X-ray entries followed by that with respect to entries of similar resolution.

The Analysed column shows the number of residues for which the backbone conformation was analysed, and the total number of residues.

Mol	Chain	Analysed	Favoured	Allowed	Outliers	Percentiles	
1	A	152/165 (92%)	133 (88%)	15 (10%)	4 (3%)	6	2
1	B	158/165 (96%)	138 (87%)	20 (13%)	0	100	100
1	C	151/165 (92%)	132 (87%)	14 (9%)	5 (3%)	4	1
All	All	461/495 (93%)	403 (87%)	49 (11%)	9 (2%)	9	4

5 of 9 Ramachandran outliers are listed below:

Mol	Chain	Res	Type
1	A	247	GLN
1	C	236	TYR
1	C	237	PRO
1	A	142	GLU

Continued on next page...

Continued from previous page...

Mol	Chain	Res	Type
1	A	178	HIS

5.3.2 Protein sidechains ⓘ

In the following table, the Percentiles column shows the percent sidechain outliers of the chain as a percentile score with respect to all X-ray entries followed by that with respect to entries of similar resolution.

The Analysed column shows the number of residues for which the sidechain conformation was analysed, and the total number of residues.

Mol	Chain	Analysed	Rotameric	Outliers	Percentiles	
1	A	131/139 (94%)	105 (80%)	26 (20%)	1	0
1	B	134/139 (96%)	109 (81%)	25 (19%)	2	1
1	C	130/139 (94%)	100 (77%)	30 (23%)	1	0
All	All	395/417 (95%)	314 (80%)	81 (20%)	1	0

5 of 81 residues with a non-rotameric sidechain are listed below:

Mol	Chain	Res	Type
1	B	190	LEU
1	B	241	SER
1	C	240	ASN
1	B	217	HIS
1	B	232	GLU

Some sidechains can be flipped to improve hydrogen bonding and reduce clashes. 5 of 14 such sidechains are listed below:

Mol	Chain	Res	Type
1	B	230	ASN
1	B	247	GLN
1	C	178	HIS
1	B	210	ASN
1	C	170	ASN

5.3.3 RNA ⓘ

There are no RNA molecules in this entry.

5.4 Non-standard residues in protein, DNA, RNA chains [i](#)

There are no non-standard protein/DNA/RNA residues in this entry.

5.5 Carbohydrates [i](#)

There are no carbohydrates in this entry.

5.6 Ligand geometry [i](#)

Of 18 ligands modelled in this entry, 15 are monoatomic - leaving 3 for Mogul analysis.

In the following table, the Counts columns list the number of bonds (or angles) for which Mogul statistics could be retrieved, the number of bonds (or angles) that are observed in the model and the number of bonds (or angles) that are defined in the chemical component dictionary. The Link column lists molecule types, if any, to which the group is linked. The Z score for a bond length (or angle) is the number of standard deviations the observed value is removed from the expected value. A bond length (or angle) with $|Z| > 2$ is considered an outlier worth inspection. RMSZ is the root-mean-square of all Z scores of the bond lengths (or angles).

Mol	Type	Chain	Res	Link	Bond lengths			Bond angles		
					Counts	RMSZ	$\# Z > 2$	Counts	RMSZ	$\# Z > 2$
4	NGH	A	480	2	21,21,21	8.90	15 (71%)	26,29,29	5.06	13 (50%)
4	NGH	B	479	2	21,21,21	8.37	16 (76%)	26,29,29	3.56	13 (50%)
4	NGH	C	481	2	21,21,21	11.86	17 (80%)	26,29,29	6.44	15 (57%)

In the following table, the Chirals column lists the number of chiral outliers, the number of chiral centers analysed, the number of these observed in the model and the number defined in the chemical component dictionary. Similar counts are reported in the Torsion and Rings columns. '-' means no outliers of that kind were identified.

Mol	Type	Chain	Res	Link	Chirals	Torsions	Rings
4	NGH	A	480	2	1/1/4/5	0/24/24/24	0/1/1/1
4	NGH	B	479	2	1/1/4/5	0/24/24/24	0/1/1/1
4	NGH	C	481	2	1/1/4/5	1/24/24/24	0/1/1/1

The worst 5 of 48 bond length outliers are listed below:

Mol	Chain	Res	Type	Atoms	Z	Observed(Å)	Ideal(Å)
4	B	479	NGH	O4-N1	-7.00	1.27	1.39
4	A	480	NGH	O4-N1	-6.58	1.28	1.39
4	C	481	NGH	O4-N1	-5.00	1.31	1.39
4	C	481	NGH	S1-N	-3.94	1.57	1.63

Continued on next page...

Continued from previous page...

Mol	Chain	Res	Type	Atoms	Z	Observed(Å)	Ideal(Å)
4	C	481	NGH	C10-N	-3.37	1.43	1.47

The worst 5 of 41 bond angle outliers are listed below:

Mol	Chain	Res	Type	Atoms	Z	Observed(°)	Ideal(°)
4	C	481	NGH	O5-C11-N1	-23.69	96.37	123.40
4	C	481	NGH	O4-N1-C11	-11.70	102.24	119.81
4	A	480	NGH	O3-S1-O2	-11.14	100.72	119.46
4	A	480	NGH	O5-C11-N1	-9.85	112.16	123.40
4	B	479	NGH	O5-C11-N1	-8.58	113.61	123.40

All (3) chirality outliers are listed below:

Mol	Chain	Res	Type	Atom
4	C	481	NGH	N
4	B	479	NGH	N
4	A	480	NGH	N

All (1) torsion outliers are listed below:

Mol	Chain	Res	Type	Atoms
4	C	481	NGH	O5-C11-N1-O4

There are no ring outliers.

3 monomers are involved in 36 short contacts:

Mol	Chain	Res	Type	Clashes	Symm-Clashes
4	A	480	NGH	4	0
4	B	479	NGH	7	0
4	C	481	NGH	25	0

5.7 Other polymers [i](#)

There are no such residues in this entry.

5.8 Polymer linkage issues [i](#)

There are no chain breaks in this entry.

6 Fit of model and data [i](#)

6.1 Protein, DNA and RNA chains [i](#)

In the following table, the column labelled ‘#RSRZ > 2’ contains the number (and percentage) of RSRZ outliers, followed by percent RSRZ outliers for the chain as percentile scores relative to all X-ray entries and entries of similar resolution. The OWAB column contains the minimum, median, 95th percentile and maximum values of the occupancy-weighted average B-factor per residue. The column labelled ‘Q < 0.9’ lists the number of (and percentage) of residues with an average occupancy less than 0.9.

Mol	Chain	Analysed	<RSRZ>	#RSRZ>2	OWAB(Å ²)	Q<0.9
1	A	156/165 (94%)	0.62	10 (6%) 20 25	18, 34, 50, 67	0
1	B	160/165 (96%)	0.78	10 (6%) 21 26	23, 36, 50, 60	0
1	C	155/165 (93%)	0.74	14 (9%) 10 13	22, 36, 54, 63	0
All	All	471/495 (95%)	0.71	34 (7%) 16 21	18, 35, 51, 67	0

The worst 5 of 34 RSRZ outliers are listed below:

Mol	Chain	Res	Type	RSRZ
1	A	245	LEU	5.7
1	C	263	GLY	5.2
1	C	239	TYR	4.9
1	C	236	TYR	4.0
1	A	171	TYR	3.9

6.2 Non-standard residues in protein, DNA, RNA chains [i](#)

There are no non-standard protein/DNA/RNA residues in this entry.

6.3 Carbohydrates [i](#)

There are no carbohydrates in this entry.

6.4 Ligands [i](#)

In the following table, the Atoms column lists the number of modelled atoms in the group and the number defined in the chemical component dictionary. LLDF column lists the quality of electron density of the group with respect to its neighbouring residues in protein, DNA or RNA chains. The B-factors column lists the minimum, median, 95th percentile and maximum values of B factors

of atoms in the group. The column labelled 'Q < 0.9' lists the number of atoms with occupancy less than 0.9.

Mol	Type	Chain	Res	Atoms	RSCC	RSR	LLDF	B-factors(Å ²)	Q<0.9
4	NGH	A	480	21/21	0.87	0.20	2.16	35,44,46,47	0
4	NGH	C	481	21/21	0.83	0.26	1.40	40,46,48,51	0
4	NGH	B	479	21/21	0.89	0.19	0.59	33,34,37,38	0
3	CA	A	467	1/1	0.98	0.08	-1.89	31,31,31,31	0
2	ZN	A	465	1/1	1.00	0.05	-1.90	29,29,29,29	0
3	CA	A	468	1/1	0.99	0.05	-2.54	25,25,25,25	0
2	ZN	C	474	1/1	1.00	0.04	-2.85	36,36,36,36	0
3	CA	B	472	1/1	0.98	0.05	-3.19	30,30,30,30	0
3	CA	C	477	1/1	0.97	0.03	-3.49	40,40,40,40	0
3	CA	A	466	1/1	0.98	0.06	-3.79	31,31,31,31	0
3	CA	C	476	1/1	0.99	0.08	-3.89	36,36,36,36	0
2	ZN	B	470	1/1	1.00	0.03	-4.21	20,20,20,20	0
3	CA	B	473	1/1	0.99	0.04	-4.73	34,34,34,34	0
2	ZN	C	475	1/1	0.99	0.03	-5.03	29,29,29,29	0
3	CA	C	478	1/1	0.94	0.05	-5.17	44,44,44,44	0
3	CA	B	471	1/1	0.99	0.03	-6.03	26,26,26,26	0
2	ZN	A	464	1/1	0.99	0.03	-	33,33,33,33	0
2	ZN	B	469	1/1	0.98	0.04	-	33,33,33,33	0

6.5 Other polymers [i](#)

There are no such residues in this entry.