



Full wwPDB X-ray Structure Validation Report ⓘ

Feb 13, 2017 – 12:42 pm GMT

PDB ID : 1QCJ
Title : LOW TEMPERATURE COMPLEX OF POKEWEED ANTIVIRAL PROTEIN WITH PTEORIC ACID
Authors : Kurinov, I.V.; Myers, D.E.; Irvin, J.D.; Uckun, F.M.
Deposited on : 1999-05-05
Resolution : 2.10 Å(reported)

This is a Full wwPDB X-ray Structure Validation Report for a publicly released PDB entry.

We welcome your comments at validation@mail.wwpdb.org

A user guide is available at

<http://wwpdb.org/validation/2016/XrayValidationReportHelp>

with specific help available everywhere you see the ⓘ symbol.

The following versions of software and data (see [references ⓘ](#)) were used in the production of this report:

MolProbity : 4.02b-467
Mogul : 1.7.2 (RC1), CSD as538be (2017)
Xtriage (Phenix) : **NOT EXECUTED**
EDS : **NOT EXECUTED**
Percentile statistics : 20161228.v01 (using entries in the PDB archive December 28th 2016)
Ideal geometry (proteins) : Engh & Huber (2001)
Ideal geometry (DNA, RNA) : Parkinson et al. (1996)
Validation Pipeline (wwPDB-VP) : recalc28949

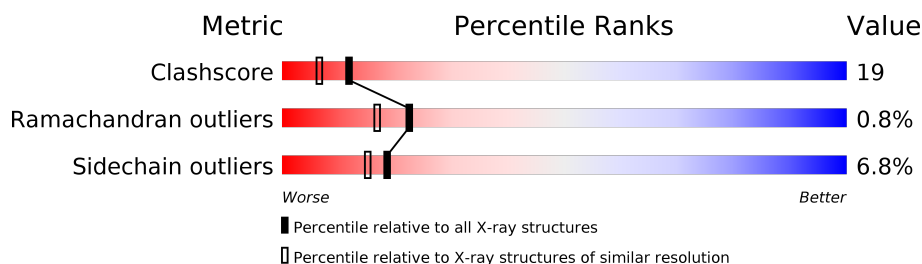
1 Overall quality at a glance

The following experimental techniques were used to determine the structure:

X-RAY DIFFRACTION

The reported resolution of this entry is 2.10 Å.

Percentile scores (ranging between 0-100) for global validation metrics of the entry are shown in the following graphic. The table shows the number of entries on which the scores are based.



Metric	Whole archive (#Entries)	Similar resolution (#Entries, resolution range(Å))
Clashscore	112137	4788 (2.10-2.10)
Ramachandran outliers	110173	4740 (2.10-2.10)
Sidechain outliers	110143	4741 (2.10-2.10)

The table below summarises the geometric issues observed across the polymeric chains and their fit to the electron density. The red, orange, yellow and green segments on the lower bar indicate the fraction of residues that contain outliers for ≥ 3 , 2, 1 and 0 types of geometric quality criteria. A grey segment represents the fraction of residues that are not modelled. The numeric value for each fraction is indicated below the corresponding segment, with a dot representing fractions $\leq 5\%$. The upper red bar (where present) indicates the fraction of residues that have poor fit to the electron density. The numeric value is given above the bar.

Note EDS was not executed.

Mol	Chain	Length	Quality of chain
1	A	262	
1	B	262	

The following table lists non-polymeric compounds, carbohydrate monomers and non-standard residues in protein, DNA, RNA chains that are outliers for geometric or electron-density-fit criteria:

Mol	Type	Chain	Res	Chirality	Geometry	Clashes	Electron density
2	APT	A	901	-	-	X	-
2	APT	B	902	-	-	X	-

2 Entry composition [i](#)

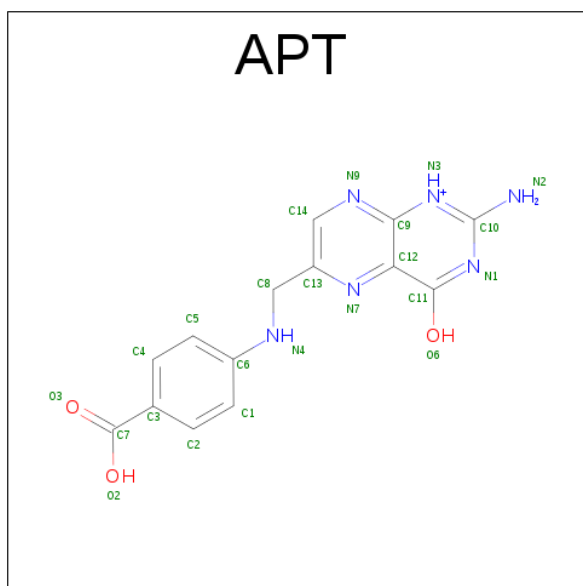
There are 3 unique types of molecules in this entry. The entry contains 5709 atoms, of which 1002 are hydrogens and 0 are deuteriums.

In the tables below, the ZeroOcc column contains the number of atoms modelled with zero occupancy, the AltConf column contains the number of residues with at least one atom in alternate conformation and the Trace column contains the number of residues modelled with at most 2 atoms.

- Molecule 1 is a protein called POKEWEED ANTIVIRAL PROTEIN.

Mol	Chain	Residues	Atoms						ZeroOcc	AltConf	Trace
1	A	262	Total	C	H	N	O	S	0	0	0
			2550	1300	490	355	396	9			
1	B	262	Total	C	H	N	O	S	0	0	0
			2550	1300	490	355	396	9			

- Molecule 2 is 2-AMINO-6-[(4-CARBOXY-PHENYLAMINO)-METHYL]-4-HYDROXY-PT ERIDIN-1-IUM (three-letter code: APT) (formula: C₁₄H₁₃N₆O₃).



Mol	Chain	Residues	Atoms					ZeroOcc	AltConf
2	A	1	Total	C	H	N	O	0	0
			34	14	11	6	3		
2	B	1	Total	C	H	N	O	0	0
			34	14	11	6	3		

- Molecule 3 is water.

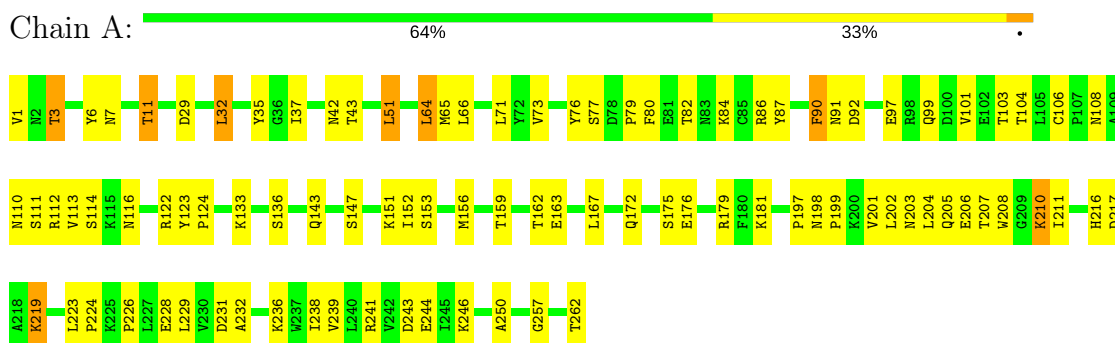
Mol	Chain	Residues	Atoms		ZeroOcc	AltConf
3	A	256	Total 256	O 256	0	0
3	B	285	Total 285	O 285	0	0

3 Residue-property plots

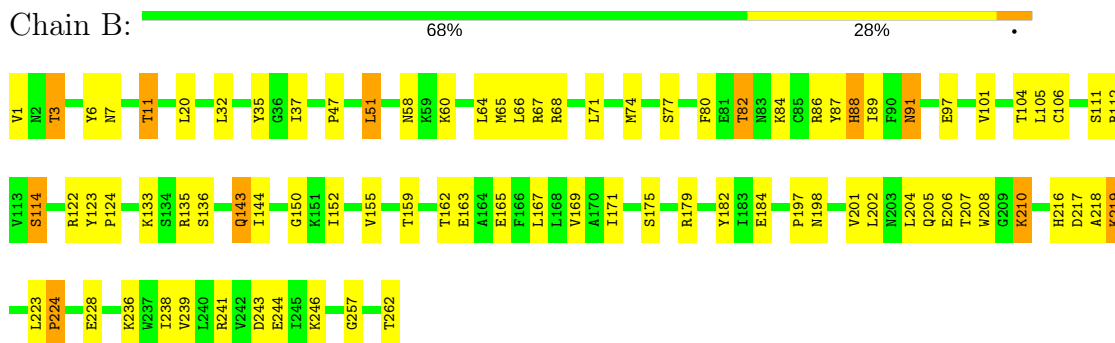
These plots are drawn for all protein, RNA and DNA chains in the entry. The first graphic for a chain summarises the proportions of the various outlier classes displayed in the second graphic. The second graphic shows the sequence view annotated by issues in geometry and electron density. Residues are color-coded according to the number of geometric quality criteria for which they contain at least one outlier: green = 0, yellow = 1, orange = 2 and red = 3 or more. A red dot above a residue indicates a poor fit to the electron density ($RSRZ > 2$). Stretches of 2 or more consecutive residues without any outlier are shown as a green connector. Residues present in the sample, but not in the model, are shown in grey.

Note EDS was not executed.

• Molecule 1: POKEWEED ANTIVIRAL PROTEIN



• Molecule 1: POKEWEED ANTIVIRAL PROTEIN



4 Data and refinement statistics

Xtriage (Phenix) and EDS were not executed - this section is therefore incomplete.

Property	Value	Source
Space group	P 1	Depositor
Cell constants a, b, c, α , β , γ	48.19Å 48.50Å 63.92Å 68.85° 81.78° 64.62°	Depositor
Resolution (Å)	8.00 – 2.10	Depositor
% Data completeness (in resolution range)	85.3 (8.00-2.10)	Depositor
R_{merge}	0.07	Depositor
R_{sym}	(Not available)	Depositor
Refinement program	X-PLOR	Depositor
R, R_{free}	0.230 , 0.230	Depositor
Estimated twinning fraction	No twinning to report.	Xtriage
Total number of atoms	5709	wwPDB-VP
Average B, all atoms (Å ²)	15.0	wwPDB-VP

5 Model quality

5.1 Standard geometry

Bond lengths and bond angles in the following residue types are not validated in this section: APT

The Z score for a bond length (or angle) is the number of standard deviations the observed value is removed from the expected value. A bond length (or angle) with $|Z| > 5$ is considered an outlier worth inspection. RMSZ is the root-mean-square of all Z scores of the bond lengths (or angles).

Mol	Chain	Bond lengths		Bond angles	
		RMSZ	$\# Z > 5$	RMSZ	$\# Z > 5$
1	A	0.43	0/2096	0.66	0/2840
1	B	0.44	0/2096	0.68	0/2840
All	All	0.43	0/4192	0.67	0/5680

There are no bond length outliers.

There are no bond angle outliers.

There are no chirality outliers.

There are no planarity outliers.

5.2 Too-close contacts

In the following table, the Non-H and H(model) columns list the number of non-hydrogen atoms and hydrogen atoms in the chain respectively. The H(added) column lists the number of hydrogen atoms added and optimized by MolProbity. The Clashes column lists the number of clashes within the asymmetric unit, whereas Symm-Clashes lists symmetry related clashes.

Mol	Chain	Non-H	H(model)	H(added)	Clashes	Symm-Clashes
1	A	2060	490	2083	76	0
1	B	2060	490	2083	80	0
2	A	23	11	12	15	0
2	B	23	11	12	17	0
3	A	256	0	0	7	0
3	B	285	0	0	7	0
All	All	4707	1002	4190	160	0

The all-atom clashscore is defined as the number of clashes found per 1000 atoms (including hydrogen atoms). The all-atom clashscore for this structure is 19.

All (160) close contacts within the same asymmetric unit are listed below, sorted by their clash

magnitude.

Atom-1	Atom-2	Interatomic distance (Å)	Clash overlap (Å)
1:B:124:PRO:HD3	2:B:902:APT:H2	1.33	1.08
1:A:206:GLU:HG2	2:A:901:APT:O2	0.91	1.07
1:B:202:LEU:O	1:B:206:GLU:HG3	1.71	0.91
1:A:124:PRO:HD3	2:A:901:APT:H2	1.52	0.91
1:B:124:PRO:HD3	2:B:902:APT:C2	2.02	0.89
2:B:902:APT:H9	2:B:902:APT:H5	1.60	0.83
1:B:219:LYS:H	1:B:219:LYS:HD3	1.43	0.82
2:A:901:APT:H9	2:A:901:APT:H5	1.59	0.82
1:B:219:LYS:HE3	1:B:224:PRO:HA	1.62	0.82
1:B:228:GLU:HB3	1:B:236:LYS:NZ	1.96	0.80
1:A:239:VAL:HG13	1:A:244:GLU:HB2	1.63	0.79
1:B:207:THR:HA	1:B:210:LYS:HD2	1.67	0.76
1:B:219:LYS:N	1:B:219:LYS:HD3	2.02	0.73
1:B:219:LYS:HB3	3:B:1156:HOH:O	1.89	0.72
1:A:228:GLU:HB3	1:A:236:LYS:NZ	2.04	0.71
1:A:37:ILE:HD11	1:A:246:LYS:HG3	1.71	0.71
1:A:219:LYS:HD3	1:A:219:LYS:H	1.53	0.71
1:B:179:ARG:HD2	1:B:208:TRP:CE2	2.28	0.69
1:A:219:LYS:HD3	1:A:219:LYS:N	2.08	0.68
1:B:3:THR:HB	1:B:51:LEU:HB2	1.73	0.67
1:A:122:ARG:HA	2:A:901:APT:HN4	1.60	0.67
2:A:901:APT:H9	2:A:901:APT:C5	2.25	0.66
1:A:207:THR:HA	1:A:210:LYS:HD2	1.78	0.66
1:A:219:LYS:HE3	1:A:224:PRO:HA	1.80	0.64
1:B:82:THR:HA	3:B:976:HOH:O	1.98	0.64
1:B:143:GLN:HG2	3:B:939:HOH:O	1.98	0.64
2:B:902:APT:H9	2:B:902:APT:C5	2.27	0.63
1:A:231:ASP:HB2	3:A:955:HOH:O	1.99	0.62
1:B:175:SER:OG	2:B:902:APT:N2	2.32	0.62
1:A:159:THR:HG23	1:A:162:THR:H	1.65	0.62
1:A:202:LEU:O	1:A:206:GLU:HG3	2.00	0.61
1:B:239:VAL:HG13	1:B:244:GLU:HB2	1.82	0.61
1:A:35:TYR:HA	1:A:262:THR:OXT	1.99	0.61
1:B:124:PRO:CD	2:B:902:APT:H2	2.21	0.61
1:A:206:GLU:HG2	2:A:901:APT:C7	2.09	0.60
1:B:171:ILE:HG23	2:B:902:APT:N2	2.17	0.60
1:A:73:VAL:HG23	2:A:901:APT:H22	1.66	0.60
1:B:159:THR:HG23	1:B:162:THR:H	1.65	0.59
1:A:179:ARG:HD2	1:A:208:TRP:CE2	2.37	0.59
1:A:122:ARG:HA	2:A:901:APT:N4	2.18	0.59
1:A:206:GLU:CB	2:A:901:APT:O2	2.49	0.59

Continued on next page...

Continued from previous page...

Atom-1	Atom-2	Interatomic distance (Å)	Clash overlap (Å)
1:B:65:MET:SD	1:B:101:VAL:HA	2.42	0.59
1:B:80:PHE:O	1:B:84:LYS:HB2	2.02	0.59
1:A:124:PRO:HD3	2:A:901:APT:C2	2.27	0.58
1:A:123:TYR:HB2	2:A:901:APT:C2	2.34	0.58
1:B:219:LYS:HE3	1:B:224:PRO:CA	2.34	0.58
1:B:37:ILE:HD11	1:B:246:LYS:HG3	1.86	0.58
1:A:80:PHE:O	1:A:84:LYS:HB2	2.03	0.58
1:A:7:ASN:O	1:A:11:THR:HG23	2.04	0.58
1:B:179:ARG:NH2	2:B:902:APT:H3	2.02	0.57
1:A:90:PHE:HB3	1:A:92:ASP:OD1	2.05	0.57
1:A:65:MET:SD	1:A:101:VAL:HA	2.46	0.56
1:B:228:GLU:HG2	1:B:238:ILE:HG13	1.87	0.56
1:B:228:GLU:HB3	1:B:236:LYS:HZ2	1.69	0.56
1:A:99:GLN:HB2	3:A:995:HOH:O	2.05	0.56
1:B:175:SER:O	1:B:179:ARG:HG3	2.06	0.55
1:A:6:TYR:CZ	1:A:11:THR:HG21	2.43	0.54
1:B:179:ARG:NH2	2:B:902:APT:N3	2.55	0.54
1:B:6:TYR:CE1	1:B:11:THR:HG21	2.44	0.53
1:A:228:GLU:HG2	1:A:238:ILE:HG13	1.89	0.53
1:B:206:GLU:CG	2:B:902:APT:O2	2.56	0.53
1:B:1:VAL:HG21	1:B:104:THR:HG23	1.91	0.53
1:B:67:ARG:HB2	1:B:74:MET:SD	2.49	0.53
1:A:226:PRO:HB2	3:A:1043:HOH:O	2.08	0.53
1:B:219:LYS:N	1:B:219:LYS:CD	2.72	0.53
1:B:206:GLU:HG2	2:B:902:APT:O2	2.09	0.52
1:A:1:VAL:HG22	3:A:1113:HOH:O	2.09	0.52
1:B:216:HIS:HD2	1:B:217:ASP:OD1	1.92	0.52
1:B:20:LEU:HD12	1:B:184:GLU:HG3	1.92	0.52
1:B:144:ILE:HG13	3:B:939:HOH:O	2.08	0.52
1:A:77:SER:HA	1:A:86:ARG:O	2.09	0.52
1:B:7:ASN:O	1:B:11:THR:HG23	2.10	0.52
1:A:87:TYR:CZ	1:A:114:SER:HB2	2.45	0.51
1:B:97:GLU:O	1:B:101:VAL:HG23	2.11	0.51
1:B:35:TYR:HA	1:B:262:THR:OXT	2.10	0.51
1:B:77:SER:HA	1:B:86:ARG:O	2.10	0.51
1:B:165:GLU:O	1:B:169:VAL:HG23	2.11	0.51
1:A:51:LEU:HD12	1:A:65:MET:HA	1.92	0.51
1:A:136:SER:HA	1:A:197:PRO:HG2	1.93	0.50
1:A:216:HIS:HD2	1:A:217:ASP:OD1	1.94	0.50
1:B:123:TYR:H	2:B:902:APT:C1	2.24	0.50
1:B:124:PRO:HD3	2:B:902:APT:C1	2.41	0.50

Continued on next page...

Continued from previous page...

Atom-1	Atom-2	Interatomic distance (Å)	Clash overlap (Å)
1:A:64:LEU:HD12	1:A:76:TYR:HB3	1.93	0.49
1:B:122:ARG:HA	2:B:902:APT:HN4	1.77	0.49
1:B:35:TYR:CE2	1:B:218:ALA:HB3	2.47	0.49
1:B:84:LYS:HA	1:B:111:SER:O	2.12	0.49
1:B:58:ASN:ND2	3:B:917:HOH:O	2.46	0.48
1:A:116:ASN:ND2	3:A:909:HOH:O	2.44	0.48
1:A:179:ARG:HD2	1:A:208:TRP:CD2	2.48	0.48
1:B:207:THR:HA	1:B:210:LYS:CD	2.42	0.48
1:A:201:VAL:O	1:A:205:GLN:HG3	2.14	0.48
1:A:84:LYS:HA	1:A:111:SER:O	2.13	0.47
1:A:66:LEU:HD23	1:A:71:LEU:HD22	1.96	0.47
1:A:175:SER:OG	2:A:901:APT:N2	2.47	0.47
1:A:206:GLU:CD	2:A:901:APT:O2	2.48	0.47
1:A:216:HIS:HE1	1:A:257:GLY:O	1.97	0.47
1:A:122:ARG:NH1	3:A:1077:HOH:O	2.44	0.46
1:B:152:ILE:HD11	1:B:163:GLU:HA	1.96	0.46
1:A:3:THR:HB	1:A:51:LEU:HB2	1.96	0.46
1:B:201:VAL:HG23	1:B:202:LEU:HD23	1.96	0.46
1:B:66:LEU:HD23	1:B:71:LEU:HD22	1.98	0.46
1:B:143:GLN:H	1:B:143:GLN:CD	2.19	0.46
1:A:87:TYR:OH	1:A:114:SER:HB2	2.15	0.46
1:A:152:ILE:HD11	1:A:163:GLU:HA	1.98	0.46
1:A:199:PRO:HD2	1:A:232:ALA:O	2.16	0.46
1:B:89:ILE:HG12	1:B:101:VAL:CG1	2.46	0.46
1:A:179:ARG:HH22	2:A:901:APT:H3	1.64	0.46
1:B:87:TYR:CE2	1:B:114:SER:HB2	2.51	0.46
1:B:122:ARG:HB3	2:B:902:APT:H1	1.97	0.46
1:B:51:LEU:HD12	1:B:65:MET:HA	1.98	0.45
1:B:122:ARG:HA	2:B:902:APT:N4	2.31	0.45
1:A:97:GLU:O	1:A:101:VAL:HG23	2.17	0.45
1:A:241:ARG:NH1	1:A:243:ASP:HB2	2.32	0.45
1:A:6:TYR:CE1	1:A:11:THR:HG21	2.52	0.45
1:A:106:CYS:O	1:A:112:ARG:HD3	2.18	0.44
1:A:123:TYR:H	2:A:901:APT:C1	2.30	0.44
1:B:123:TYR:HB2	2:B:902:APT:C2	2.48	0.44
1:B:159:THR:HG22	1:B:162:THR:OG1	2.17	0.44
1:A:172:GLN:HA	1:A:176:GLU:HB2	2.00	0.44
1:B:135:ARG:NH1	1:B:205:GLN:OE1	2.48	0.44
1:B:179:ARG:HD2	1:B:208:TRP:CD2	2.53	0.44
1:B:3:THR:HG22	3:B:1047:HOH:O	2.17	0.43
1:A:147:SER:O	1:A:151:LYS:HG3	2.18	0.43

Continued on next page...

Continued from previous page...

Atom-1	Atom-2	Interatomic distance (Å)	Clash overlap (Å)
1:B:198:ASN:OD1	1:B:201:VAL:HG13	2.19	0.43
1:A:203:ASN:ND2	1:A:229:LEU:HB3	2.33	0.43
1:B:84:LYS:N	1:B:84:LYS:HD2	2.33	0.43
1:A:108:ASN:OD1	1:A:110:ASN:HB3	2.19	0.43
1:A:228:GLU:HG2	1:A:238:ILE:CG1	2.48	0.43
1:B:241:ARG:NH1	1:B:243:ASP:HB2	2.34	0.43
1:A:84:LYS:N	1:A:84:LYS:HD2	2.34	0.43
1:B:198:ASN:O	1:B:201:VAL:HG22	2.19	0.42
1:B:3:THR:HG21	3:B:906:HOH:O	2.19	0.42
1:B:87:TYR:CZ	1:B:114:SER:HB2	2.53	0.42
1:B:101:VAL:O	1:B:105:LEU:HB2	2.19	0.42
1:B:136:SER:HA	1:B:197:PRO:HG2	2.01	0.42
1:B:6:TYR:CZ	1:B:11:THR:HG21	2.54	0.42
1:A:42:ASN:OD1	1:A:43:THR:N	2.53	0.42
1:B:182:TYR:HE2	1:B:201:VAL:HG12	1.85	0.42
1:A:181:LYS:HG2	1:A:250:ALA:HB2	2.01	0.42
1:B:60:LYS:HG3	1:B:150:GLY:HA2	2.00	0.42
1:A:159:THR:HG21	3:A:978:HOH:O	2.20	0.42
1:A:1:VAL:HG21	1:A:104:THR:HG23	2.02	0.42
1:A:207:THR:O	1:A:211:ILE:HG13	2.19	0.42
1:B:91:ASN:ND2	1:B:91:ASN:C	2.74	0.42
1:B:182:TYR:CE2	1:B:201:VAL:HG12	2.53	0.41
1:A:29:ASP:HB3	1:A:32:LEU:HB2	2.02	0.41
1:A:106:CYS:HB3	1:A:112:ARG:HB3	2.00	0.41
1:A:198:ASN:OD1	1:A:201:VAL:HG13	2.20	0.41
1:B:106:CYS:O	1:B:112:ARG:HD3	2.21	0.41
1:B:88:HIS:N	1:B:88:HIS:CD2	2.88	0.41
1:B:47:PRO:O	1:B:68:ARG:HD3	2.21	0.41
1:A:99:GLN:O	1:A:103:THR:HG23	2.20	0.41
1:A:207:THR:HA	1:A:210:LYS:CD	2.49	0.41
1:A:228:GLU:HB3	1:A:236:LYS:HZ2	1.85	0.41
1:B:1:VAL:CG1	1:B:51:LEU:HD22	2.51	0.41
1:A:113:VAL:HG22	1:A:114:SER:N	2.36	0.40
1:A:71:LEU:HD23	1:A:71:LEU:HA	1.86	0.40
1:A:198:ASN:O	1:A:201:VAL:HG22	2.21	0.40
1:A:239:VAL:HG13	1:A:244:GLU:CB	2.42	0.40
1:B:216:HIS:HE1	1:B:257:GLY:O	2.03	0.40

There are no symmetry-related clashes.

5.3 Torsion angles

5.3.1 Protein backbone

In the following table, the Percentiles column shows the percent Ramachandran outliers of the chain as a percentile score with respect to all X-ray entries followed by that with respect to entries of similar resolution.

The Analysed column shows the number of residues for which the backbone conformation was analysed, and the total number of residues.

Mol	Chain	Analysed	Favoured	Allowed	Outliers	Percentiles	
1	A	260/262 (99%)	248 (95%)	10 (4%)	2 (1%)	22	17
1	B	260/262 (99%)	246 (95%)	12 (5%)	2 (1%)	22	17
All	All	520/524 (99%)	494 (95%)	22 (4%)	4 (1%)	22	17

All (4) Ramachandran outliers are listed below:

Mol	Chain	Res	Type
1	B	82	THR
1	A	82	THR
1	A	153	SER
1	B	224	PRO

5.3.2 Protein sidechains

In the following table, the Percentiles column shows the percent sidechain outliers of the chain as a percentile score with respect to all X-ray entries followed by that with respect to entries of similar resolution.

The Analysed column shows the number of residues for which the sidechain conformation was analysed, and the total number of residues.

Mol	Chain	Analysed	Rotameric	Outliers	Percentiles	
1	A	234/234 (100%)	218 (93%)	16 (7%)	18	15
1	B	234/234 (100%)	218 (93%)	16 (7%)	18	15
All	All	468/468 (100%)	436 (93%)	32 (7%)	18	15

All (32) residues with a non-rotameric sidechain are listed below:

Mol	Chain	Res	Type
1	A	3	THR
1	A	11	THR

Continued on next page...

Continued from previous page...

Mol	Chain	Res	Type
1	A	32	LEU
1	A	51	LEU
1	A	64	LEU
1	A	79	PRO
1	A	90	PHE
1	A	91	ASN
1	A	133	LYS
1	A	143	GLN
1	A	156	MET
1	A	167	LEU
1	A	204	LEU
1	A	210	LYS
1	A	219	LYS
1	A	223	LEU
1	B	3	THR
1	B	11	THR
1	B	32	LEU
1	B	51	LEU
1	B	64	LEU
1	B	88	HIS
1	B	91	ASN
1	B	114	SER
1	B	133	LYS
1	B	143	GLN
1	B	155	VAL
1	B	167	LEU
1	B	204	LEU
1	B	210	LYS
1	B	219	LYS
1	B	223	LEU

Some sidechains can be flipped to improve hydrogen bonding and reduce clashes. All (18) such sidechains are listed below:

Mol	Chain	Res	Type
1	A	25	ASN
1	A	44	ASN
1	A	91	ASN
1	A	116	ASN
1	A	118	ASN
1	A	148	ASN
1	A	186	GLN
1	A	203	ASN

Continued on next page...

Continued from previous page...

Mol	Chain	Res	Type
1	A	216	HIS
1	B	25	ASN
1	B	44	ASN
1	B	58	ASN
1	B	91	ASN
1	B	116	ASN
1	B	118	ASN
1	B	148	ASN
1	B	216	HIS
1	B	220	ASN

5.3.3 RNA ⓘ

There are no RNA molecules in this entry.

5.4 Non-standard residues in protein, DNA, RNA chains ⓘ

There are no non-standard protein/DNA/RNA residues in this entry.

5.5 Carbohydrates ⓘ

There are no carbohydrates in this entry.

5.6 Ligand geometry ⓘ

2 ligands are modelled in this entry.

In the following table, the Counts columns list the number of bonds (or angles) for which Mogul statistics could be retrieved, the number of bonds (or angles) that are observed in the model and the number of bonds (or angles) that are defined in the chemical component dictionary. The Link column lists molecule types, if any, to which the group is linked. The Z score for a bond length (or angle) is the number of standard deviations the observed value is removed from the expected value. A bond length (or angle) with $|Z| > 2$ is considered an outlier worth inspection. RMSZ is the root-mean-square of all Z scores of the bond lengths (or angles).

Mol	Type	Chain	Res	Link	Bond lengths			Bond angles		
					Counts	RMSZ	$\# Z > 2$	Counts	RMSZ	$\# Z > 2$
2	APT	A	901	1	20,25,25	2.43	9 (45%)	27,35,35	2.52	14 (51%)
2	APT	B	902	-	20,25,25	2.46	7 (35%)	27,35,35	2.44	13 (48%)

In the following table, the Chirals column lists the number of chiral outliers, the number of chiral centers analysed, the number of these observed in the model and the number defined in the chemical component dictionary. Similar counts are reported in the Torsion and Rings columns. '-' means no outliers of that kind were identified.

Mol	Type	Chain	Res	Link	Chirals	Torsions	Rings
2	APT	A	901	1	-	0/5/9/9	0/3/3/3
2	APT	B	902	-	-	0/5/9/9	0/3/3/3

All (16) bond length outliers are listed below:

Mol	Chain	Res	Type	Atoms	Z	Observed(Å)	Ideal(Å)
2	B	902	APT	C9-N3	-5.76	1.31	1.37
2	A	901	APT	C9-N3	-4.59	1.32	1.37
2	A	901	APT	C9-N9	-3.38	1.31	1.34
2	A	901	APT	C10-N2	-3.22	1.27	1.32
2	B	902	APT	C9-N9	-2.95	1.31	1.34
2	B	902	APT	C10-N2	-2.67	1.28	1.32
2	A	901	APT	C10-N1	-2.32	1.30	1.33
2	A	901	APT	C5-C6	2.15	1.42	1.39
2	A	901	APT	C8-C13	2.34	1.55	1.51
2	B	902	APT	C6-N4	2.37	1.45	1.38
2	B	902	APT	C13-N7	2.39	1.37	1.32
2	A	901	APT	C13-N7	2.49	1.37	1.32
2	A	901	APT	C6-N4	2.70	1.46	1.38
2	B	902	APT	C8-C13	3.06	1.57	1.51
2	B	902	APT	C12-C9	5.45	1.50	1.40
2	A	901	APT	C12-C9	5.61	1.51	1.40

All (27) bond angle outliers are listed below:

Mol	Chain	Res	Type	Atoms	Z	Observed(°)	Ideal(°)
2	A	901	APT	C12-C9-N9	-4.70	117.22	123.07
2	B	902	APT	C12-C9-N9	-4.47	117.51	123.07
2	A	901	APT	N2-C10-N1	-3.12	116.44	120.26
2	B	902	APT	C1-C6-N4	-3.09	114.81	121.03
2	B	902	APT	N2-C10-N1	-3.05	116.53	120.26
2	A	901	APT	C1-C6-N4	-3.00	114.99	121.03
2	A	901	APT	C11-C12-C9	-2.84	114.53	117.25
2	A	901	APT	C8-C13-C14	-2.31	117.47	121.38
2	B	902	APT	C8-C13-C14	-2.20	117.66	121.38
2	B	902	APT	C2-C3-C7	-2.02	117.74	120.45
2	B	902	APT	C4-C3-C7	2.12	123.30	120.45
2	A	901	APT	C4-C3-C7	2.23	123.45	120.45

Continued on next page...

Continued from previous page...

Mol	Chain	Res	Type	Atoms	Z	Observed(°)	Ideal(°)
2	A	901	APT	C10-N1-C11	2.46	118.72	116.57
2	A	901	APT	C5-C6-N4	2.57	126.20	121.03
2	B	902	APT	C5-C6-N4	2.61	126.29	121.03
2	B	902	APT	O6-C11-C12	3.00	125.47	119.71
2	A	901	APT	O6-C11-C12	3.02	125.52	119.71
2	B	902	APT	C8-C13-N7	3.08	122.39	116.58
2	B	902	APT	C11-C12-N7	3.13	125.70	118.29
2	A	901	APT	C11-C12-N7	3.21	125.87	118.29
2	A	901	APT	C8-C13-N7	3.35	122.89	116.58
2	B	902	APT	C8-N4-C6	3.45	131.20	122.25
2	A	901	APT	C8-N4-C6	3.54	131.41	122.25
2	B	902	APT	N3-C9-N9	4.29	123.99	116.42
2	A	901	APT	N3-C9-N9	4.40	124.17	116.42
2	A	901	APT	C14-N9-C9	4.55	123.13	116.70
2	B	902	APT	C14-N9-C9	4.89	123.61	116.70

There are no chirality outliers.

There are no torsion outliers.

There are no ring outliers.

2 monomers are involved in 32 short contacts:

Mol	Chain	Res	Type	Clashes	Symm-Clashes
2	A	901	APT	15	0
2	B	902	APT	17	0

5.7 Other polymers [i](#)

There are no such residues in this entry.

5.8 Polymer linkage issues [i](#)

There are no chain breaks in this entry.

6 Fit of model and data

6.1 Protein, DNA and RNA chains

EDS was not executed - this section is therefore empty.

6.2 Non-standard residues in protein, DNA, RNA chains

EDS was not executed - this section is therefore empty.

6.3 Carbohydrates

EDS was not executed - this section is therefore empty.

6.4 Ligands

EDS was not executed - this section is therefore empty.

6.5 Other polymers

EDS was not executed - this section is therefore empty.