



Full wwPDB X-ray Structure Validation Report ⓘ

Feb 13, 2017 – 06:34 pm GMT

PDB ID : 3QCE
Title : Human receptor protein tyrosine phosphatase gamma, domain 1, in complex with 3-[(3,4-dichlorobenzyl)sulfanyl]thiophene-2-carboxylic acid via soaking
Authors : Sheriff, S.
Deposited on : 2011-01-16
Resolution : 2.10 Å(reported)

This is a Full wwPDB X-ray Structure Validation Report for a publicly released PDB entry.

We welcome your comments at validation@mail.wwpdb.org

A user guide is available at

<http://wwpdb.org/validation/2016/XrayValidationReportHelp>

with specific help available everywhere you see the ⓘ symbol.

The following versions of software and data (see [references ⓘ](#)) were used in the production of this report:

MolProbity : 4.02b-467
Mogul : 1.7.2 (RC1), CSD as538be (2017)
Xtriage (Phenix) : 1.9-1692
EDS : trunk28620
Percentile statistics : 20161228.v01 (using entries in the PDB archive December 28th 2016)
Refmac : 5.8.0135
CCP4 : 6.5.0
Ideal geometry (proteins) : Engh & Huber (2001)
Ideal geometry (DNA, RNA) : Parkinson et al. (1996)
Validation Pipeline (wwPDB-VP) : recalc28949

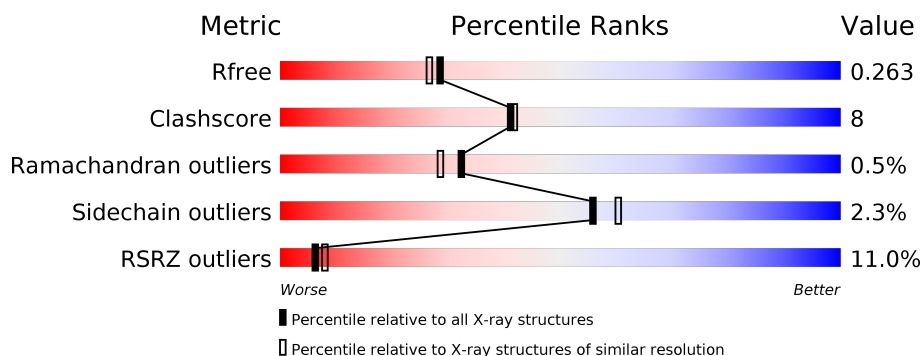
1 Overall quality at a glance

The following experimental techniques were used to determine the structure:

X-RAY DIFFRACTION

The reported resolution of this entry is 2.10 Å.

Percentile scores (ranging between 0-100) for global validation metrics of the entry are shown in the following graphic. The table shows the number of entries on which the scores are based.



Metric	Whole archive (#Entries)	Similar resolution (#Entries, resolution range(Å))
R_{free}	100719	4243 (2.10-2.10)
Clashscore	112137	4788 (2.10-2.10)
Ramachandran outliers	110173	4740 (2.10-2.10)
Sidechain outliers	110143	4741 (2.10-2.10)
RSRZ outliers	101464	4275 (2.10-2.10)

The table below summarises the geometric issues observed across the polymeric chains and their fit to the electron density. The red, orange, yellow and green segments on the lower bar indicate the fraction of residues that contain outliers for ≥ 3 , 2, 1 and 0 types of geometric quality criteria. A grey segment represents the fraction of residues that are not modelled. The numeric value for each fraction is indicated below the corresponding segment, with a dot representing fractions $\leq 5\%$. The upper red bar (where present) indicates the fraction of residues that have poor fit to the electron density. The numeric value is given above the bar.

Mol	Chain	Length	Quality of chain
1	A	310	<div> <div>12%</div> <div> <div></div> <div>75%</div> <div>17%</div> <div>• 7%</div> </div> </div>
1	B	310	<div> <div>9%</div> <div> <div></div> <div>75%</div> <div>16%</div> <div>8%</div> </div> </div>

2 Entry composition

There are 4 unique types of molecules in this entry. The entry contains 4843 atoms, of which 0 are hydrogens and 0 are deuteriums.

In the tables below, the ZeroOcc column contains the number of atoms modelled with zero occupancy, the AltConf column contains the number of residues with at least one atom in alternate conformation and the Trace column contains the number of residues modelled with at most 2 atoms.

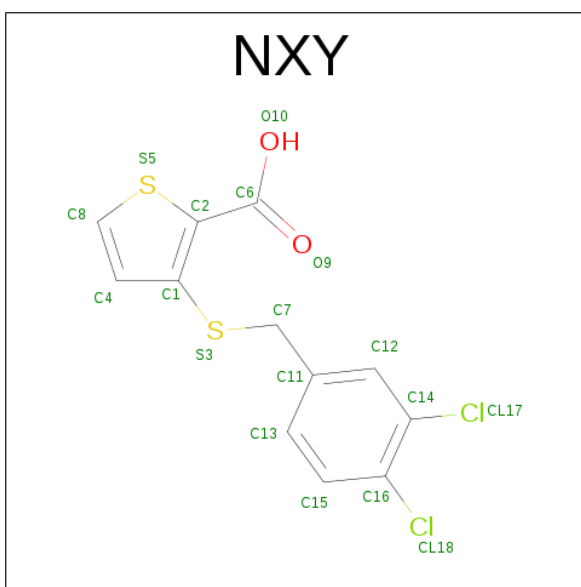
- Molecule 1 is a protein called Receptor-type tyrosine-protein phosphatase gamma.

Mol	Chain	Residues	Atoms					ZeroOcc	AltConf	Trace
1	A	288	Total	C	N	O	S	10	11	0
			2349	1490	412	436	11			
1	B	284	Total	C	N	O	S	16	2	0
			2274	1441	405	417	11			

There are 12 discrepancies between the modelled and reference sequences:

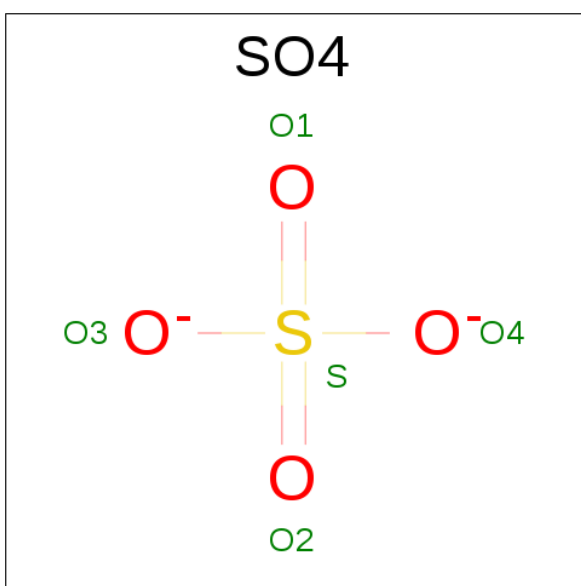
Chain	Residue	Modelled	Actual	Comment	Reference
A	819	GLY	-	EXPRESSION TAG	UNP P23470
A	820	SER	-	EXPRESSION TAG	UNP P23470
A	821	HIS	-	EXPRESSION TAG	UNP P23470
A	822	MET	-	EXPRESSION TAG	UNP P23470
A	823	GLY	-	EXPRESSION TAG	UNP P23470
A	824	SER	-	EXPRESSION TAG	UNP P23470
B	819	GLY	-	EXPRESSION TAG	UNP P23470
B	820	SER	-	EXPRESSION TAG	UNP P23470
B	821	HIS	-	EXPRESSION TAG	UNP P23470
B	822	MET	-	EXPRESSION TAG	UNP P23470
B	823	GLY	-	EXPRESSION TAG	UNP P23470
B	824	SER	-	EXPRESSION TAG	UNP P23470

- Molecule 2 is 3-[(3,4-DICHLOROBENZYL)SULFANYL]THIOPHENE-2-CARBOXYLIC ACID (three-letter code: NXY) (formula: C₁₂H₈Cl₂O₂S₂).



Mol	Chain	Residues	Atoms					ZeroOcc	AltConf
2	A	1	Total	C	Cl	O	S	0	1
			18	12	2	2	2		
2	B	1	Total	C	Cl	O	S	0	0
			18	12	2	2	2		

- Molecule 3 is SULFATE ION (three-letter code: SO4) (formula: O₄S).



Mol	Chain	Residues	Atoms			ZeroOcc	AltConf
3	A	1	Total	O	S	0	0
			5	4	1		
3	B	1	Total	O	S	0	0
			5	4	1		

Continued on next page...

Continued from previous page...

Mol	Chain	Residues	Atoms			ZeroOcc	AltConf
3	B	1	Total	O	S	0	0
			5	4	1		
3	B	1	Total	O	S	0	0
			5	4	1		

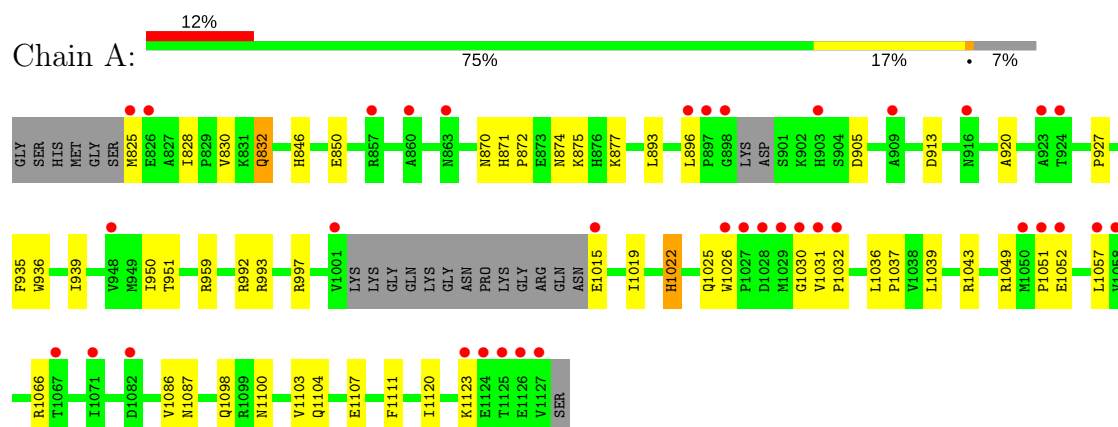
- Molecule 4 is water.

Mol	Chain	Residues	Atoms		ZeroOcc	AltConf
4	A	86	Total	O	0	2
			86	86		
4	B	78	Total	O	0	0
			78	78		

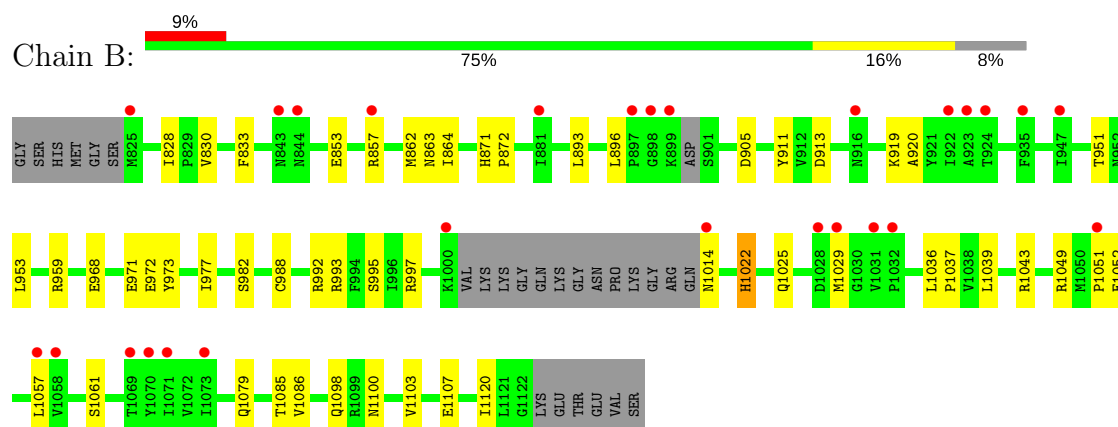
3 Residue-property plots

These plots are drawn for all protein, RNA and DNA chains in the entry. The first graphic for a chain summarises the proportions of the various outlier classes displayed in the second graphic. The second graphic shows the sequence view annotated by issues in geometry and electron density. Residues are color-coded according to the number of geometric quality criteria for which they contain at least one outlier: green = 0, yellow = 1, orange = 2 and red = 3 or more. A red dot above a residue indicates a poor fit to the electron density ($RSRZ > 2$). Stretches of 2 or more consecutive residues without any outlier are shown as a green connector. Residues present in the sample, but not in the model, are shown in grey.

- Molecule 1: Receptor-type tyrosine-protein phosphatase gamma



- Molecule 1: Receptor-type tyrosine-protein phosphatase gamma



4 Data and refinement statistics

Property	Value	Source
Space group	P 21 21 21	Depositor
Cell constants a, b, c, α , β , γ	74.90Å 82.50Å 127.00Å 90.00° 90.00° 90.00°	Depositor
Resolution (Å)	31.41 – 2.10 31.40 – 2.10	Depositor EDS
% Data completeness (in resolution range)	99.3 (31.41-2.10) 99.5 (31.40-2.10)	Depositor EDS
R_{merge}	0.09	Depositor
R_{sym}	(Not available)	Depositor
$\langle I/\sigma(I) \rangle$ ¹	3.09 (at 2.10Å)	Xtriage
Refinement program	CNX 2005	Depositor
R, R_{free}	0.233 , 0.261 0.230 , 0.263	Depositor DCC
R_{free} test set	682 reflections (1.49%)	DCC
Wilson B-factor (Å ²)	28.7	Xtriage
Anisotropy	0.288	Xtriage
Bulk solvent k_{sol} (e/Å ³), B_{sol} (Å ²)	0.36 , 49.4	EDS
L-test for twinning ²	$\langle L \rangle = 0.49$, $\langle L^2 \rangle = 0.33$	Xtriage
Estimated twinning fraction	No twinning to report.	Xtriage
F_o, F_c correlation	0.94	EDS
Total number of atoms	4843	wwPDB-VP
Average B, all atoms (Å ²)	33.0	wwPDB-VP

Xtriage's analysis on translational NCS is as follows: *The largest off-origin peak in the Patterson function is 5.22% of the height of the origin peak. No significant pseudotranslation is detected.*

¹Intensities estimated from amplitudes.

²Theoretical values of $\langle |L| \rangle$, $\langle L^2 \rangle$ for acentric reflections are 0.5, 0.333 respectively for untwinned datasets, and 0.375, 0.2 for perfectly twinned datasets.

5 Model quality

5.1 Standard geometry

Bond lengths and bond angles in the following residue types are not validated in this section: NXY, SO4

The Z score for a bond length (or angle) is the number of standard deviations the observed value is removed from the expected value. A bond length (or angle) with $|Z| > 5$ is considered an outlier worth inspection. RMSZ is the root-mean-square of all Z scores of the bond lengths (or angles).

Mol	Chain	Bond lengths		Bond angles	
		RMSZ	$\# Z > 5$	RMSZ	$\# Z > 5$
1	A	0.31	0/2428	0.48	0/3303
1	B	0.30	0/2336	0.48	0/3170
All	All	0.31	0/4764	0.48	0/6473

There are no bond length outliers.

There are no bond angle outliers.

There are no chirality outliers.

There are no planarity outliers.

5.2 Too-close contacts

In the following table, the Non-H and H(model) columns list the number of non-hydrogen atoms and hydrogen atoms in the chain respectively. The H(added) column lists the number of hydrogen atoms added and optimized by MolProbity. The Clashes column lists the number of clashes within the asymmetric unit, whereas Symm-Clashes lists symmetry related clashes.

Mol	Chain	Non-H	H(model)	H(added)	Clashes	Symm-Clashes
1	A	2349	0	2234	41	0
1	B	2274	0	2203	34	0
2	A	18	0	7	3	0
2	B	18	0	7	0	0
3	A	5	0	0	0	0
3	B	15	0	0	0	0
4	A	86	0	0	1	0
4	B	78	0	0	1	0
All	All	4843	0	4451	74	0

The all-atom clashscore is defined as the number of clashes found per 1000 atoms (including hydrogen atoms). The all-atom clashscore for this structure is 8.

All (74) close contacts within the same asymmetric unit are listed below, sorted by their clash magnitude.

Atom-1	Atom-2	Interatomic distance (Å)	Clash overlap (Å)
1:A:1104:GLN:HE22	1:B:863:ASN:HD21	1.18	0.88
1:A:1032[B]:PRO:HG2	2:A:2001[B]:NXY:H7	1.58	0.86
1:B:833:PHE:CG	1:B:1086:VAL:HG11	2.21	0.75
1:A:1104:GLN:HE22	1:B:863:ASN:ND2	1.83	0.75
1:A:939[B]:ILE:HD11	1:A:1057:LEU:HD13	1.71	0.70
1:B:830:VAL:HG13	1:B:1120:ILE:HD13	1.77	0.67
1:A:950:ILE:HG22	1:A:1026[B]:TRP:CH2	2.29	0.67
1:B:971:GLU:HG2	1:B:973:TYR:CZ	2.30	0.66
1:B:988[B]:CYS:SG	1:B:1025:GLN:NE2	2.70	0.65
1:A:825:MET:SD	1:A:1087[B]:ASN:ND2	2.70	0.64
1:B:953:LEU:HB3	1:B:959:ARG:HH12	1.62	0.64
1:A:1026[B]:TRP:CH2	1:A:1066:ARG:HD3	2.36	0.61
1:B:992:ARG:HH12	1:B:1022:HIS:HD2	1.47	0.61
1:B:977:ILE:HD12	1:B:997:ARG:NH1	2.15	0.60
1:B:995:SER:HG	1:B:1014:ASN:N	1.98	0.60
1:B:913:ASP:CG	1:B:1098:GLN:HE22	2.08	0.57
1:B:857:ARG:N	1:B:857:ARG:HD2	2.19	0.56
1:B:920:ALA:O	1:B:1049:ARG:NH1	2.36	0.55
1:A:1031[B]:VAL:HB	1:A:1032[B]:PRO:HD2	1.88	0.55
1:A:825:MET:HG2	1:A:1087[A]:ASN:ND2	2.22	0.54
1:A:950:ILE:HG22	1:A:1026[B]:TRP:CZ2	2.42	0.54
1:A:913:ASP:CG	1:A:1098:GLN:HE22	2.11	0.54
1:A:1031[B]:VAL:HB	1:A:1032[B]:PRO:CD	2.39	0.53
1:A:992:ARG:HH12	1:A:1022:HIS:HD2	1.56	0.52
1:A:1015:GLU:N	1:A:1015:GLU:OE1	2.42	0.52
1:B:992:ARG:HH12	1:B:1022:HIS:CD2	2.28	0.52
1:A:872:PRO:HA	1:A:875:LYS:HG2	1.92	0.51
1:A:1049:ARG:HD2	4:A:2148:HOH:O	2.11	0.51
1:A:832:GLN:HE21	1:A:832:GLN:HA	1.76	0.51
1:A:950:ILE:HG22	1:A:1026[B]:TRP:HH2	1.76	0.51
1:A:920:ALA:O	1:A:1049:ARG:NH1	2.31	0.51
1:A:832:GLN:NE2	1:A:832:GLN:HA	2.26	0.50
1:A:997:ARG:HA	1:A:1015:GLU:OE1	2.10	0.50
1:B:1079:GLN:HG2	1:B:1085:THR:O	2.12	0.50
1:A:871:HIS:ND1	1:A:872:PRO:HD2	2.27	0.50
1:B:1039:LEU:O	1:B:1043:ARG:HG3	2.12	0.49
1:B:1061:SER:HB3	4:B:2105:HOH:O	2.13	0.49
1:A:1039:LEU:O	1:A:1043:ARG:HG3	2.13	0.48
1:B:1051:PRO:HA	1:B:1052:GLU:HA	1.58	0.48
1:A:927:PRO:HG3	1:A:935:PHE:CD1	2.49	0.47

Continued on next page...

Continued from previous page...

Atom-1	Atom-2	Interatomic distance (Å)	Clash overlap (Å)
1:A:893:LEU:HB2	1:A:905:ASP:HA	1.96	0.47
1:B:1107:GLU:CD	1:B:1107:GLU:H	2.17	0.47
1:B:911:TYR:HB3	1:B:919:LYS:HG2	1.96	0.47
1:B:988[B]:CYS:SG	1:B:1037:PRO:HB3	2.54	0.47
1:B:853:GLU:O	1:B:857:ARG:HG2	2.14	0.47
1:A:1111:PHE:HB2	2:A:2001[B]:NXY:H8	1.97	0.46
1:B:982:SER:OG	1:B:993:ARG:NH1	2.48	0.46
1:A:1036:LEU:N	1:A:1037:PRO:CD	2.79	0.46
1:A:936:TRP:CE3	1:A:939[A]:ILE:HD12	2.51	0.46
1:B:871:HIS:ND1	1:B:872:PRO:HD2	2.31	0.46
1:A:993:ARG:HG2	1:A:1019:ILE:HG12	1.99	0.45
1:A:951:THR:O	1:A:1022:HIS:HE1	2.01	0.44
1:A:1051:PRO:HA	1:A:1052:GLU:HA	1.56	0.44
1:A:1030[A]:GLY:HA2	1:A:1107:GLU:OE1	2.18	0.44
1:B:1036:LEU:HB3	1:B:1037:PRO:HD3	2.01	0.42
1:A:825:MET:HG2	1:A:1087[A]:ASN:HD22	1.84	0.42
1:A:874:ASN:O	1:A:877:LYS:HB2	2.19	0.42
1:B:951:THR:O	1:B:1022:HIS:HE1	2.03	0.42
1:B:871:HIS:CG	1:B:872:PRO:HD2	2.55	0.41
1:A:1036:LEU:HB3	1:A:1037:PRO:HD3	2.02	0.41
1:A:846:HIS:O	1:A:850:GLU:HG2	2.20	0.41
1:B:1057:LEU:HD23	1:B:1057:LEU:C	2.41	0.41
2:A:2001[B]:NXY:H4	2:A:2001[B]:NXY:H7A	1.78	0.41
1:B:862:MET:HE2	1:B:864:ILE:HD11	2.01	0.41
1:A:870:ASN:O	1:A:875:LYS:HE3	2.21	0.41
1:A:951:THR:O	1:A:1022:HIS:CE1	2.74	0.41
1:B:893:LEU:HB2	1:B:905:ASP:HA	2.02	0.41
1:B:971:GLU:HG3	1:B:972:GLU:N	2.34	0.41
1:A:828:ILE:HG12	1:A:1086:VAL:O	2.20	0.41
1:B:951:THR:O	1:B:1022:HIS:CE1	2.73	0.40
1:A:830:VAL:HG13	1:A:1120:ILE:HD13	2.02	0.40
1:B:828:ILE:HD11	1:B:833:PHE:HA	2.03	0.40
1:B:997:ARG:HD3	1:B:1014:ASN:CB	2.51	0.40

There are no symmetry-related clashes.

5.3 Torsion angles

5.3.1 Protein backbone

In the following table, the Percentiles column shows the percent Ramachandran outliers of the chain as a percentile score with respect to all X-ray entries followed by that with respect to entries of similar resolution.

The Analysed column shows the number of residues for which the backbone conformation was analysed, and the total number of residues.

Mol	Chain	Analysed	Favoured	Allowed	Outliers	Percentiles	
1	A	293/310 (94%)	276 (94%)	15 (5%)	2 (1%)	25	20
1	B	280/310 (90%)	271 (97%)	8 (3%)	1 (0%)	38	35
All	All	573/620 (92%)	547 (96%)	23 (4%)	3 (0%)	32	28

All (3) Ramachandran outliers are listed below:

Mol	Chain	Res	Type
1	A	1123	LYS
1	A	1103	VAL
1	B	1103	VAL

5.3.2 Protein sidechains

In the following table, the Percentiles column shows the percent sidechain outliers of the chain as a percentile score with respect to all X-ray entries followed by that with respect to entries of similar resolution.

The Analysed column shows the number of residues for which the sidechain conformation was analysed, and the total number of residues.

Mol	Chain	Analysed	Rotameric	Outliers	Percentiles	
1	A	251/275 (91%)	245 (98%)	6 (2%)	54	59
1	B	244/275 (89%)	239 (98%)	5 (2%)	60	66
All	All	495/550 (90%)	484 (98%)	11 (2%)	56	62

All (11) residues with a non-rotameric sidechain are listed below:

Mol	Chain	Res	Type
1	A	832	GLN
1	A	896	LEU
1	A	959	ARG

Continued on next page...

Continued from previous page...

Mol	Chain	Res	Type
1	A	1022	HIS
1	A	1025	GLN
1	A	1100	ASN
1	B	896	LEU
1	B	968	GLU
1	B	1022	HIS
1	B	1029	MET
1	B	1100	ASN

Some sidechains can be flipped to improve hydrogen bonding and reduce clashes. All (14) such sidechains are listed below:

Mol	Chain	Res	Type
1	A	832	GLN
1	A	845	GLN
1	A	963	GLN
1	A	969	ASN
1	A	975	ASN
1	A	1022	HIS
1	B	832	GLN
1	B	845	GLN
1	B	863	ASN
1	B	963	GLN
1	B	975	ASN
1	B	1022	HIS
1	B	1025	GLN
1	B	1079	GLN

5.3.3 RNA [i](#)

There are no RNA molecules in this entry.

5.4 Non-standard residues in protein, DNA, RNA chains [i](#)

There are no non-standard protein/DNA/RNA residues in this entry.

5.5 Carbohydrates [i](#)

There are no carbohydrates in this entry.

5.6 Ligand geometry

6 ligands are modelled in this entry.

In the following table, the Counts columns list the number of bonds (or angles) for which Mogul statistics could be retrieved, the number of bonds (or angles) that are observed in the model and the number of bonds (or angles) that are defined in the chemical component dictionary. The Link column lists molecule types, if any, to which the group is linked. The Z score for a bond length (or angle) is the number of standard deviations the observed value is removed from the expected value. A bond length (or angle) with $|Z| > 2$ is considered an outlier worth inspection. RMSZ is the root-mean-square of all Z scores of the bond lengths (or angles).

Mol	Type	Chain	Res	Link	Bond lengths			Bond angles		
					Counts	RMSZ	$\# Z > 2$	Counts	RMSZ	$\# Z > 2$
2	NXY	A	2001[B]	-	14,19,19	1.84	6 (42%)	14,26,26	3.17	6 (42%)
3	SO4	A	2054	-	4,4,4	0.35	0	6,6,6	0.07	0
2	NXY	B	2001	-	14,19,19	1.77	4 (28%)	14,26,26	2.73	4 (28%)
3	SO4	B	2051	-	4,4,4	0.32	0	6,6,6	0.08	0
3	SO4	B	2052	-	4,4,4	0.34	0	6,6,6	0.05	0
3	SO4	B	2053	-	4,4,4	0.34	0	6,6,6	0.08	0

In the following table, the Chirals column lists the number of chiral outliers, the number of chiral centers analysed, the number of these observed in the model and the number defined in the chemical component dictionary. Similar counts are reported in the Torsion and Rings columns. '-' means no outliers of that kind were identified.

Mol	Type	Chain	Res	Link	Chirals	Torsions	Rings
2	NXY	A	2001[B]	-	-	0/3/9/9	0/2/2/2
3	SO4	A	2054	-	-	0/0/0/0	0/0/0/0
2	NXY	B	2001	-	-	0/3/9/9	0/2/2/2
3	SO4	B	2051	-	-	0/0/0/0	0/0/0/0
3	SO4	B	2052	-	-	0/0/0/0	0/0/0/0
3	SO4	B	2053	-	-	0/0/0/0	0/0/0/0

All (10) bond length outliers are listed below:

Mol	Chain	Res	Type	Atoms	Z	Observed(Å)	Ideal(Å)
2	A	2001[B]	NXY	C1-S3	-2.15	1.74	1.77
2	A	2001[B]	NXY	C15-C16	2.18	1.43	1.38
2	A	2001[B]	NXY	C12-C11	2.34	1.43	1.39
2	A	2001[B]	NXY	C16-C14	2.34	1.44	1.39
2	A	2001[B]	NXY	C15-C13	2.48	1.43	1.38
2	B	2001	NXY	C12-C14	2.51	1.42	1.38
2	B	2001	NXY	C15-C13	2.56	1.43	1.38
2	B	2001	NXY	C12-C11	2.57	1.43	1.39

Continued on next page...

Continued from previous page...

Mol	Chain	Res	Type	Atoms	Z	Observed(Å)	Ideal(Å)
2	A	2001[B]	NXY	C13-C11	2.89	1.44	1.38
2	B	2001	NXY	C13-C11	3.03	1.45	1.38

All (10) bond angle outliers are listed below:

Mol	Chain	Res	Type	Atoms	Z	Observed(°)	Ideal(°)
2	A	2001[B]	NXY	C14-C12-C11	-8.60	114.76	120.46
2	B	2001	NXY	C14-C12-C11	-8.19	115.03	120.46
2	A	2001[B]	NXY	C7-S3-C1	-4.60	94.15	102.61
2	A	2001[B]	NXY	C13-C15-C16	-3.37	114.82	119.98
2	B	2001	NXY	C13-C15-C16	-3.18	115.10	119.98
2	A	2001[B]	NXY	C7-C11-C12	-2.22	116.96	120.34
2	B	2001	NXY	C7-C11-C12	-2.06	117.21	120.34
2	A	2001[B]	NXY	C15-C16-C14	2.20	124.55	120.02
2	B	2001	NXY	C13-C11-C12	3.32	123.27	118.53
2	A	2001[B]	NXY	C13-C11-C12	4.51	124.98	118.53

There are no chirality outliers.

There are no torsion outliers.

There are no ring outliers.

1 monomer is involved in 3 short contacts:

Mol	Chain	Res	Type	Clashes	Symm-Clashes
2	A	2001[B]	NXY	3	0

5.7 Other polymers [i](#)

There are no such residues in this entry.

5.8 Polymer linkage issues [i](#)

There are no chain breaks in this entry.

6 Fit of model and data

6.1 Protein, DNA and RNA chains

In the following table, the column labelled ‘#RSRZ> 2’ contains the number (and percentage) of RSRZ outliers, followed by percent RSRZ outliers for the chain as percentile scores relative to all X-ray entries and entries of similar resolution. The OWAB column contains the minimum, median, 95th percentile and maximum values of the occupancy-weighted average B-factor per residue. The column labelled ‘Q< 0.9’ lists the number of (and percentage) of residues with an average occupancy less than 0.9.

Mol	Chain	Analysed	<RSRZ>	#RSRZ>2	OWAB(Å ²)	Q<0.9
1	A	288/310 (92%)	0.52	36 (12%) 4 6	19, 31, 53, 87	4 (1%)
1	B	284/310 (91%)	0.39	27 (9%) 9 12	19, 32, 52, 70	6 (2%)
All	All	572/620 (92%)	0.46	63 (11%) 6 8	19, 31, 53, 87	10 (1%)

All (63) RSRZ outliers are listed below:

Mol	Chain	Res	Type	RSRZ
1	A	1125	THR	8.6
1	B	1014	ASN	8.5
1	A	1127	VAL	8.1
1	A	1001	VAL	7.8
1	A	1126	GLU	7.1
1	A	1123	LYS	5.7
1	A	1028[A]	ASP	5.5
1	B	898	GLY	4.4
1	A	1027[A]	PRO	4.4
1	B	897	PRO	4.3
1	B	1029	MET	4.1
1	A	897	PRO	4.0
1	A	1124	GLU	3.9
1	A	898	GLY	3.9
1	B	844	ASN	3.8
1	A	1030[A]	GLY	3.7
1	A	826	GLU	3.7
1	A	1031[A]	VAL	3.5
1	A	825	MET	3.5
1	A	916	ASN	3.5
1	A	1050	MET	3.4
1	B	825	MET	3.3
1	B	1058	VAL	3.2
1	A	1032[A]	PRO	3.1

Continued on next page...

Continued from previous page...

Mol	Chain	Res	Type	RSRZ
1	A	1058	VAL	3.1
1	B	881	ILE	3.1
1	B	916	ASN	3.0
1	A	1015	GLU	2.8
1	A	860	ALA	2.7
1	B	899	LYS	2.7
1	A	896	LEU	2.7
1	B	843	ASN	2.6
1	A	924	THR	2.6
1	B	1051	PRO	2.5
1	B	1057	LEU	2.5
1	A	857	ARG	2.5
1	A	1026[A]	TRP	2.5
1	B	1069	THR	2.5
1	B	1073	ILE	2.5
1	B	1032	PRO	2.4
1	A	1051	PRO	2.4
1	A	903	HIS	2.4
1	B	1031	VAL	2.4
1	A	1071	ILE	2.4
1	A	1052	GLU	2.4
1	A	863	ASN	2.3
1	B	922	ILE	2.3
1	A	1057	LEU	2.3
1	A	1029[A]	MET	2.3
1	B	1070	TYR	2.2
1	B	935	PHE	2.2
1	B	1071	ILE	2.2
1	B	1000	LYS	2.2
1	A	1067	THR	2.2
1	B	947	ILE	2.1
1	A	948	VAL	2.1
1	A	909	ALA	2.1
1	B	857	ARG	2.1
1	A	923	ALA	2.1
1	B	924	THR	2.1
1	A	1082	ASP	2.1
1	B	1028	ASP	2.0
1	B	923	ALA	2.0

6.2 Non-standard residues in protein, DNA, RNA chains [i](#)

There are no non-standard protein/DNA/RNA residues in this entry.

6.3 Carbohydrates [i](#)

There are no carbohydrates in this entry.

6.4 Ligands [i](#)

In the following table, the Atoms column lists the number of modelled atoms in the group and the number defined in the chemical component dictionary. LLDF column lists the quality of electron density of the group with respect to its neighbouring residues in protein, DNA or RNA chains. The B-factors column lists the minimum, median, 95th percentile and maximum values of B factors of atoms in the group. The column labelled 'Q< 0.9' lists the number of atoms with occupancy less than 0.9.

Mol	Type	Chain	Res	Atoms	RSCC	RSR	LLDF	B-factors(Å ²)	Q<0.9
2	NXY	A	2001[B]	18/18	0.85	0.24	0.70	28,37,39,40	18
2	NXY	B	2001	18/18	0.79	0.17	0.05	47,55,58,61	0
3	SO4	A	2054	5/5	0.73	0.31	-	43,44,46,46	5
3	SO4	B	2051	5/5	0.98	0.08	-	52,52,53,54	0
3	SO4	B	2053	5/5	0.82	0.22	-	44,45,47,47	5
3	SO4	B	2052	5/5	0.88	0.19	-	41,41,42,43	5

6.5 Other polymers [i](#)

There are no such residues in this entry.