



Full wwPDB X-ray Structure Validation Report ⓘ

Jul 19, 2017 – 09:49 PM EDT

PDB ID : 3QF7
Title : The Mre11:Rad50 complex forms an ATP dependent molecular clamp in DNA double-strand break repair
Authors : Moeckel, C.; Lammens, K.
Deposited on : unknown
Resolution : 1.90 Å(reported)

This is a Full wwPDB X-ray Structure Validation Report for a publicly released PDB entry.

We welcome your comments at validation@mail.wwpdb.org

A user guide is available at

<http://wwpdb.org/validation/2016/XrayValidationReportHelp>

with specific help available everywhere you see the ⓘ symbol.

The following versions of software and data (see [references ⓘ](#)) were used in the production of this report:

MolProbity : 4.02b-467
Mogul : 1.7.2 (RC1), CSD as538be (2017)
Xtriage (Phenix) : 1.9-1692
EDS : rb-20029824
Percentile statistics : 20161228.v01 (using entries in the PDB archive December 28th 2016)
Refmac : 5.8.0135
CCP4 : 6.5.0
Ideal geometry (proteins) : Engh & Huber (2001)
Ideal geometry (DNA, RNA) : Parkinson et al. (1996)
Validation Pipeline (wwPDB-VP) : rb-20029824

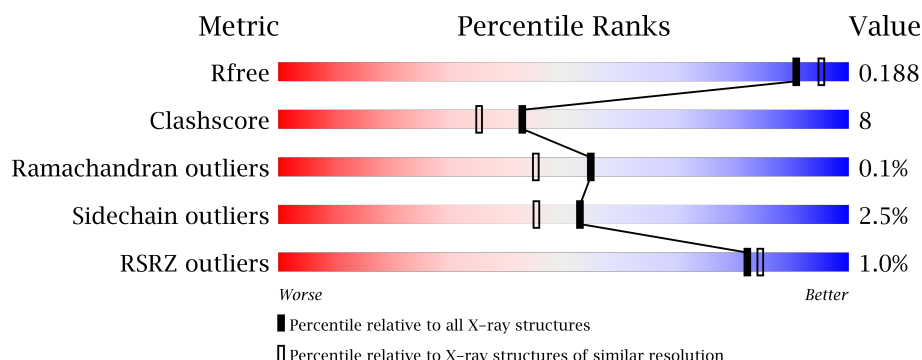
1 Overall quality at a glance

The following experimental techniques were used to determine the structure:

X-RAY DIFFRACTION

The reported resolution of this entry is 1.90 Å.

Percentile scores (ranging between 0-100) for global validation metrics of the entry are shown in the following graphic. The table shows the number of entries on which the scores are based.



Metric	Whole archive (#Entries)	Similar resolution (#Entries, resolution range(Å))
R_{free}	100719	5047 (1.90-1.90)
Clashscore	112137	5731 (1.90-1.90)
Ramachandran outliers	110173	5669 (1.90-1.90)
Sidechain outliers	110143	5670 (1.90-1.90)
RSRZ outliers	101464	5100 (1.90-1.90)

The table below summarises the geometric issues observed across the polymeric chains and their fit to the electron density. The red, orange, yellow and green segments on the lower bar indicate the fraction of residues that contain outliers for ≥ 3 , 2, 1 and 0 types of geometric quality criteria. A grey segment represents the fraction of residues that are not modelled. The numeric value for each fraction is indicated below the corresponding segment, with a dot representing fractions $\leq 5\%$. The upper red bar (where present) indicates the fraction of residues that have poor fit to the electron density. The numeric value is given above the bar.

Mol	Chain	Length	Quality of chain
1	A	365	<div> <div>0.1%</div> <div> <div></div> <div>84%</div> <div>12%</div> <div>0.1%</div> </div> </div>
1	B	365	<div> <div>0.1%</div> <div> <div></div> <div>82%</div> <div>13%</div> <div>0.1%</div> </div> </div>
2	C	50	<div> <div></div> <div> <div></div> <div>58%</div> <div>10%</div> <div>30%</div> </div> </div>
2	D	50	<div> <div>2%</div> <div> <div></div> <div>60%</div> <div>10%</div> <div>30%</div> </div> </div>

2 Entry composition

There are 5 unique types of molecules in this entry. The entry contains 7025 atoms, of which 0 are hydrogens and 0 are deuteriums.

In the tables below, the ZeroOcc column contains the number of atoms modelled with zero occupancy, the AltConf column contains the number of residues with at least one atom in alternate conformation and the Trace column contains the number of residues modelled with at most 2 atoms.

- Molecule 1 is a protein called Rad50.

Mol	Chain	Residues	Atoms					ZeroOcc	AltConf	Trace
1	A	357	Total	C	N	O	S	67	10	0
			2897	1848	497	548	4			
1	B	355	Total	C	N	O	S	65	20	0
			2952	1892	505	551	4			

There are 16 discrepancies between the modelled and reference sequences:

Chain	Residue	Modelled	Actual	Comment	Reference
A	678	GLY	-	LINKER	UNP Q9X1X1
A	679	GLY	-	LINKER	UNP Q9X1X1
A	680	ALA	-	LINKER	UNP Q9X1X1
A	681	GLY	-	LINKER	UNP Q9X1X1
A	682	GLY	-	LINKER	UNP Q9X1X1
A	683	ALA	-	LINKER	UNP Q9X1X1
A	684	GLY	-	LINKER	UNP Q9X1X1
A	685	GLY	-	LINKER	UNP Q9X1X1
B	678	GLY	-	LINKER	UNP Q9X1X1
B	679	GLY	-	LINKER	UNP Q9X1X1
B	680	ALA	-	LINKER	UNP Q9X1X1
B	681	GLY	-	LINKER	UNP Q9X1X1
B	682	GLY	-	LINKER	UNP Q9X1X1
B	683	ALA	-	LINKER	UNP Q9X1X1
B	684	GLY	-	LINKER	UNP Q9X1X1
B	685	GLY	-	LINKER	UNP Q9X1X1

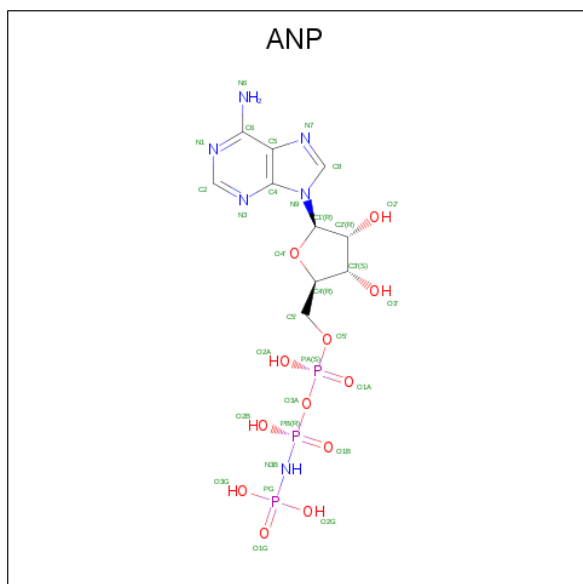
- Molecule 2 is a protein called Mre11.

Mol	Chain	Residues	Atoms				ZeroOcc	AltConf	Trace
2	D	35	Total	C	N	O	17	1	0
			315	206	49	60			
2	C	35	Total	C	N	O	46	0	0
			310	203	48	59			

There are 14 discrepancies between the modelled and reference sequences:

Chain	Residue	Modelled	Actual	Comment	Reference
D	386	GLY	-	EXPRESSION TAG	UNP Q9X1X0
D	387	HIS	-	EXPRESSION TAG	UNP Q9X1X0
D	388	HIS	-	EXPRESSION TAG	UNP Q9X1X0
D	389	HIS	-	EXPRESSION TAG	UNP Q9X1X0
D	390	HIS	-	EXPRESSION TAG	UNP Q9X1X0
D	391	HIS	-	EXPRESSION TAG	UNP Q9X1X0
D	392	HIS	-	EXPRESSION TAG	UNP Q9X1X0
C	386	GLY	-	EXPRESSION TAG	UNP Q9X1X0
C	387	HIS	-	EXPRESSION TAG	UNP Q9X1X0
C	388	HIS	-	EXPRESSION TAG	UNP Q9X1X0
C	389	HIS	-	EXPRESSION TAG	UNP Q9X1X0
C	390	HIS	-	EXPRESSION TAG	UNP Q9X1X0
C	391	HIS	-	EXPRESSION TAG	UNP Q9X1X0
C	392	HIS	-	EXPRESSION TAG	UNP Q9X1X0

- Molecule 3 is PHOSPHOAMINOPHOSPHONIC ACID-ADENYLATE ESTER (three-letter code: ANP) (formula: $C_{10}H_{17}N_6O_{12}P_3$).



Mol	Chain	Residues	Atoms					ZeroOcc	AltConf
3	A	1	Total	C	N	O	P	0	0
			31	10	6	12	3		
3	B	1	Total	C	N	O	P	0	0
			31	10	6	12	3		

- Molecule 4 is MAGNESIUM ION (three-letter code: MG) (formula: Mg).

Mol	Chain	Residues	Atoms		ZeroOcc	AltConf
4	B	1	Total 1	Mg 1	0	0
4	A	1	Total 1	Mg 1	0	0

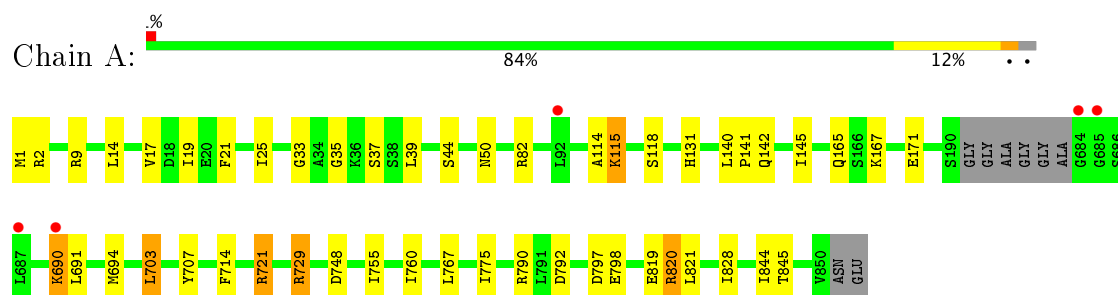
- Molecule 5 is water.

Mol	Chain	Residues	Atoms		ZeroOcc	AltConf
5	A	244	Total 244	O 244	0	0
5	B	224	Total 224	O 224	0	0
5	D	13	Total 13	O 13	0	0
5	C	6	Total 6	O 6	0	0

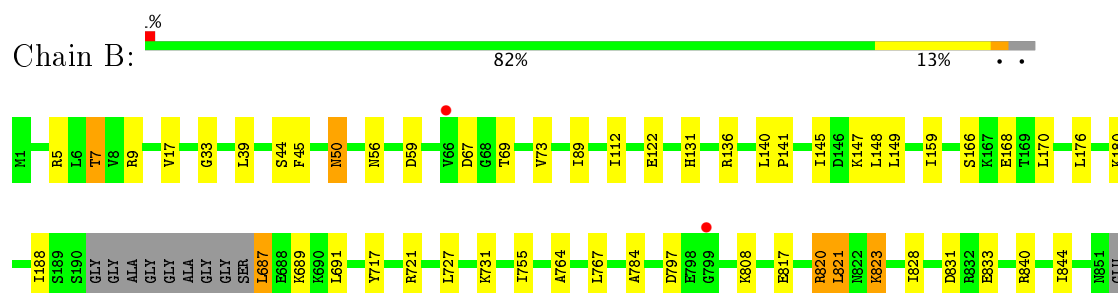
3 Residue-property plots [i](#)

These plots are drawn for all protein, RNA and DNA chains in the entry. The first graphic for a chain summarises the proportions of the various outlier classes displayed in the second graphic. The second graphic shows the sequence view annotated by issues in geometry and electron density. Residues are color-coded according to the number of geometric quality criteria for which they contain at least one outlier: green = 0, yellow = 1, orange = 2 and red = 3 or more. A red dot above a residue indicates a poor fit to the electron density ($\text{RSRZ} > 2$). Stretches of 2 or more consecutive residues without any outlier are shown as a green connector. Residues present in the sample, but not in the model, are shown in grey.

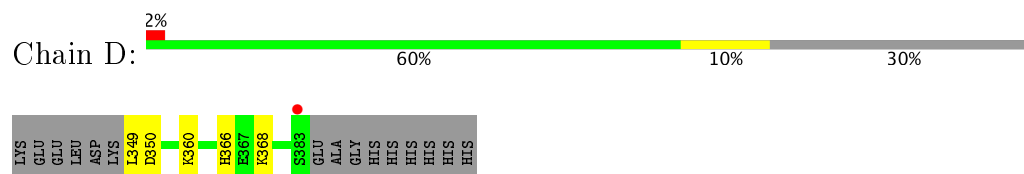
• Molecule 1: Rad50



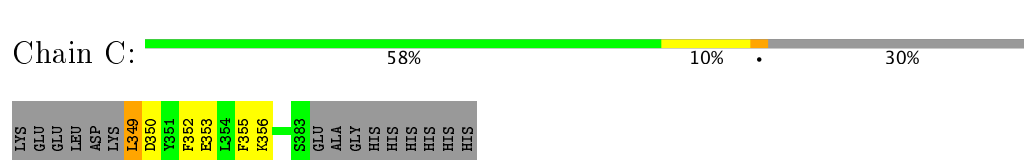
• Molecule 1: Rad50



• Molecule 2: Mre11



• Molecule 2: Mre11



4 Data and refinement statistics

Property	Value	Source
Space group	P 1	Depositor
Cell constants a, b, c, α , β , γ	49.15Å 68.40Å 71.11Å 98.64° 111.14° 92.03°	Depositor
Resolution (Å)	36.17 – 1.90 45.62 – 1.90	Depositor EDS
% Data completeness (in resolution range)	96.7 (36.17-1.90) 91.3 (45.62-1.90)	Depositor EDS
R_{merge}	(Not available)	Depositor
R_{sym}	(Not available)	Depositor
$\langle I/\sigma(I) \rangle$ ¹	7.06 (at 1.89Å)	Xtriage
Refinement program	PHENIX (phenix.refine: 1.6.1_357)	Depositor
R, R_{free}	0.157 , 0.191 0.153 , 0.188	Depositor DCC
R_{free} test set	2006 reflections (3.10%)	DCC
Wilson B-factor (Å ²)	21.3	Xtriage
Anisotropy	0.250	Xtriage
Bulk solvent k_{sol} (e/Å ³), B_{sol} (Å ²)	0.36 , 61.6	EDS
L-test for twinning ²	$\langle L \rangle = 0.49$, $\langle L^2 \rangle = 0.32$	Xtriage
Estimated twinning fraction	0.024 for h,-k,-h-l	Xtriage
F_o, F_c correlation	0.96	EDS
Total number of atoms	7025	wwPDB-VP
Average B, all atoms (Å ²)	27.0	wwPDB-VP

Xtriage's analysis on translational NCS is as follows: *The largest off-origin peak in the Patterson function is 6.83% of the height of the origin peak. No significant pseudotranslation is detected.*

¹Intensities estimated from amplitudes.

²Theoretical values of $\langle |L| \rangle$, $\langle L^2 \rangle$ for acentric reflections are 0.5, 0.333 respectively for untwinned datasets, and 0.375, 0.2 for perfectly twinned datasets.

5 Model quality [i](#)

5.1 Standard geometry [i](#)

Bond lengths and bond angles in the following residue types are not validated in this section: MG, ANP

The Z score for a bond length (or angle) is the number of standard deviations the observed value is removed from the expected value. A bond length (or angle) with $|Z| > 5$ is considered an outlier worth inspection. RMSZ is the root-mean-square of all Z scores of the bond lengths (or angles).

Mol	Chain	Bond lengths		Bond angles	
		RMSZ	$\# Z > 5$	RMSZ	$\# Z > 5$
1	A	0.38	0/2965	0.51	0/3972
1	B	0.37	0/3053	0.54	0/4094
2	C	0.27	0/314	0.40	0/416
2	D	0.31	0/322	0.44	0/427
All	All	0.37	0/6654	0.52	0/8909

There are no bond length outliers.

There are no bond angle outliers.

There are no chirality outliers.

There are no planarity outliers.

5.2 Too-close contacts [i](#)

In the following table, the Non-H and H(model) columns list the number of non-hydrogen atoms and hydrogen atoms in the chain respectively. The H(added) column lists the number of hydrogen atoms added and optimized by MolProbity. The Clashes column lists the number of clashes within the asymmetric unit, whereas Symm-Clashes lists symmetry related clashes.

Mol	Chain	Non-H	H(model)	H(added)	Clashes	Symm-Clashes
1	A	2897	0	2991	42	0
1	B	2952	0	3089	52	0
2	C	310	0	319	6	0
2	D	315	0	325	2	0
3	A	31	0	13	2	0
3	B	31	0	13	1	0
4	A	1	0	0	0	0
4	B	1	0	0	0	0
5	A	244	0	0	4	0

Continued on next page...

Continued from previous page...

Mol	Chain	Non-H	H(model)	H(added)	Clashes	Symm-Clashes
5	B	224	0	0	7	0
5	C	6	0	0	0	0
5	D	13	0	0	0	0
All	All	7025	0	6750	100	0

The all-atom clashscore is defined as the number of clashes found per 1000 atoms (including hydrogen atoms). The all-atom clashscore for this structure is 8.

All (100) close contacts within the same asymmetric unit are listed below, sorted by their clash magnitude.

Atom-1	Atom-2	Interatomic distance (Å)	Clash overlap (Å)
1:B:7[A]:THR:HG23	1:B:73:VAL:HB	1.39	1.01
1:A:755:ILE:HG13	1:A:767:LEU:HD11	1.45	0.98
1:B:5:ARG:HG2	1:B:5:ARG:HH21	1.34	0.92
1:B:7[A]:THR:CG2	1:B:73:VAL:HB	2.03	0.89
1:B:168:GLU:HB3	5:B:494:HOH:O	1.81	0.80
1:B:820[A]:ARG:HB3	1:B:820[A]:ARG:CZ	2.14	0.76
1:A:25:ILE:HD12	1:A:819[A]:GLU:HG3	1.71	0.73
1:A:729:ARG:CB	1:A:729:ARG:HH11	2.01	0.72
1:A:729:ARG:HH11	1:A:729:ARG:HB3	1.55	0.71
1:B:140[B]:LEU:HD13	1:B:145:ILE:HG13	1.73	0.71
1:B:755:ILE:HG13	1:B:767:LEU:HD11	1.71	0.70
1:A:115:LYS:HE3	1:A:118:SER:OG	1.91	0.70
1:B:808:LYS:HZ2	1:B:833:GLU:CD	1.97	0.68
1:B:820[A]:ARG:NH1	1:B:820[A]:ARG:HB3	2.10	0.66
1:A:33:GLY:H	3:A:853:ANP:HNB1	1.41	0.66
1:B:831:ASP:OD1	1:B:833:GLU:HG2	1.98	0.64
1:A:729:ARG:HH11	1:A:729:ARG:CG	2.11	0.63
1:B:39[B]:LEU:HD12	1:B:844:ILE:HD11	1.81	0.62
1:B:5:ARG:NH2	1:B:5:ARG:HG2	2.05	0.62
1:A:721:ARG:HB3	1:A:721:ARG:HH11	1.65	0.62
1:B:820[B]:ARG:HG3	1:B:821:LEU:HD13	1.81	0.62
1:A:82:ARG:HB2	1:A:82:ARG:NH1	2.15	0.60
1:A:35:GLY:O	1:A:39:LEU:HD12	2.01	0.60
1:B:56:ASN:HB3	1:B:59:ASP:OD2	2.01	0.59
1:A:114:ALA:O	1:A:115:LYS:HG2	2.04	0.58
1:A:165:GLN:HG3	1:A:167[B]:LYS:HE2	1.85	0.58
1:A:44:SER:OG	1:A:131:HIS:HE1	1.86	0.57
1:A:33:GLY:N	3:A:853:ANP:HNB1	2.02	0.57
2:C:350:ASP:HB3	2:C:353:GLU:HB2	1.87	0.56
1:B:112:ILE:CG2	1:B:122:GLU:HG2	2.36	0.56

Continued on next page...

Continued from previous page...

Atom-1	Atom-2	Interatomic distance (Å)	Clash overlap (Å)
1:B:44:SER:OG	1:B:131:HIS:HE1	1.90	0.55
1:B:9:ARG:HG2	5:B:444:HOH:O	2.06	0.55
1:A:19:ILE:HD11	1:A:21:PHE:CZ	2.41	0.55
1:B:136[B]:ARG:HG3	1:B:148:LEU:HB2	1.89	0.55
2:C:349:LEU:HD22	2:C:350:ASP:N	2.22	0.55
1:A:845[B]:THR:HG23	5:A:511:HOH:O	2.07	0.54
1:B:727:LEU:O	1:B:731:LYS:HG3	2.08	0.53
1:B:808:LYS:HD2	1:B:833:GLU:HG3	1.90	0.53
1:B:820[A]:ARG:CB	1:B:820[A]:ARG:CZ	2.87	0.53
1:A:167[B]:LYS:O	1:A:171:GLU:HB2	2.09	0.52
1:A:25:ILE:N	1:A:819[B]:GLU:OE1	2.42	0.52
1:A:729:ARG:NH1	1:A:729:ARG:CG	2.72	0.52
1:A:2:ARG:HD3	5:A:926:HOH:O	2.09	0.52
1:B:67:ASP:CG	1:B:69[A]:THR:HG22	2.30	0.52
1:A:760:ILE:N	1:A:760:ILE:HD12	2.25	0.52
1:B:50:ASN:HB2	5:B:910:HOH:O	2.09	0.51
1:B:823[B]:LYS:HE3	5:B:872:HOH:O	2.09	0.51
1:A:140:LEU:HD13	1:A:145:ILE:HD12	1.92	0.51
1:B:17:VAL:HG11	1:B:39[B]:LEU:HD21	1.93	0.51
1:B:176:LEU:HD11	1:B:180:LYS:HE2	1.93	0.50
1:B:687:LEU:CD1	1:B:689:LYS:H	2.25	0.50
1:A:140:LEU:HD13	1:A:145:ILE:CD1	2.42	0.49
1:B:5:ARG:NH2	1:B:7[A]:THR:HG22	2.27	0.49
1:A:39:LEU:CD1	1:A:844:ILE:HD13	2.43	0.48
1:B:687:LEU:HD13	1:B:689:LYS:H	1.78	0.48
1:B:717:TYR:OH	1:B:721:ARG:NH2	2.45	0.48
1:A:820:ARG:HB3	5:A:253:HOH:O	2.13	0.48
1:B:5:ARG:HH22	1:B:7[A]:THR:HG22	1.78	0.48
1:B:188:ILE:HG23	1:B:691:LEU:CD1	2.43	0.48
1:A:691:LEU:HD23	1:A:694:MET:CE	2.44	0.48
1:A:39:LEU:HD13	1:A:844:ILE:HD13	1.96	0.47
1:B:784:ALA:HB1	1:B:823[B]:LYS:HE3	1.95	0.47
1:B:817:GLU:O	1:B:820[B]:ARG:NH1	2.47	0.47
1:A:114:ALA:O	1:A:115:LYS:CG	2.64	0.45
1:A:797:ASP:HA	1:A:828:ILE:HB	1.99	0.45
1:B:166:SER:O	1:B:170[B]:LEU:HD13	2.17	0.45
1:B:9:ARG:CG	5:B:444:HOH:O	2.63	0.44
1:B:67:ASP:OD1	1:B:69[A]:THR:HG22	2.17	0.44
2:C:352:PHE:O	2:C:356:LYS:HG3	2.17	0.44
1:A:37:SER:OG	1:A:797:ASP:OD1	2.36	0.44
1:A:703:LEU:HD22	1:A:707:TYR:CE2	2.53	0.43

Continued on next page...

Continued from previous page...

Atom-1	Atom-2	Interatomic distance (Å)	Clash overlap (Å)
1:B:33:GLY:H	3:B:853:ANP:HNB1	1.65	0.43
1:A:690:LYS:O	1:A:690:LYS:HD3	2.19	0.43
1:A:729:ARG:HG2	1:A:729:ARG:NH1	2.33	0.43
1:B:145:ILE:HG22	5:B:894:HOH:O	2.18	0.43
1:B:823[A]:LYS:HE3	5:B:865:HOH:O	2.18	0.43
1:A:14:LEU:HD22	1:A:17:VAL:HG21	2.01	0.42
1:B:136[B]:ARG:HG2	1:B:159:ILE:HD13	2.01	0.42
1:B:797:ASP:HA	1:B:828:ILE:HB	2.02	0.42
1:B:140[A]:LEU:HA	1:B:141:PRO:HD3	1.81	0.42
1:B:149:LEU:HG	1:B:764:ALA:HB1	2.00	0.42
2:D:349:LEU:HB3	2:D:350:ASP:H	1.60	0.42
1:B:112:ILE:HG22	1:B:122:GLU:HG2	2.02	0.42
1:B:808:LYS:NZ	1:B:833:GLU:CD	2.72	0.42
1:A:767:LEU:HD13	1:A:775:ILE:HD12	2.01	0.41
2:C:349:LEU:HD13	2:C:349:LEU:N	2.35	0.41
1:B:820[A]:ARG:H	1:B:820[A]:ARG:HG2	1.52	0.41
1:A:9:ARG:NH1	5:A:283:HOH:O	2.53	0.41
1:A:142:GLN:NE2	1:A:798[A]:GLU:OE1	2.53	0.41
1:A:790:ARG:HH22	2:C:349:LEU:HD23	1.84	0.41
1:B:136[B]:ARG:HD3	1:B:136[B]:ARG:HA	1.89	0.41
1:B:45:PHE:CE2	1:B:89:ILE:HD11	2.56	0.41
1:A:714:PHE:CE1	2:C:355:PHE:HA	2.55	0.41
2:D:360:LYS:HG2	2:D:366:HIS:CD2	2.56	0.41
1:A:1:MET:H2	1:A:792:ASP:H	1.69	0.41
1:A:140:LEU:HA	1:A:141:PRO:HD3	1.88	0.40
1:A:19:ILE:HD11	1:A:21:PHE:CE1	2.56	0.40
1:B:136[B]:ARG:HD2	1:B:147:LYS:HB2	2.04	0.40
1:B:44:SER:OG	1:B:131:HIS:CE1	2.71	0.40
1:B:687:LEU:HD12	1:B:687:LEU:N	2.36	0.40

There are no symmetry-related clashes.

5.3 Torsion angles ⓘ

5.3.1 Protein backbone ⓘ

In the following table, the Percentiles column shows the percent Ramachandran outliers of the chain as a percentile score with respect to all X-ray entries followed by that with respect to entries of similar resolution.

The Analysed column shows the number of residues for which the backbone conformation was analysed, and the total number of residues.

Mol	Chain	Analysed	Favoured	Allowed	Outliers	Percentiles	
1	A	363/365 (100%)	358 (99%)	4 (1%)	1 (0%)	44	34
1	B	371/365 (102%)	365 (98%)	6 (2%)	0	100	100
2	C	33/50 (66%)	33 (100%)	0	0	100	100
2	D	34/50 (68%)	32 (94%)	2 (6%)	0	100	100
All	All	801/830 (96%)	788 (98%)	12 (2%)	1 (0%)	55	45

All (1) Ramachandran outliers are listed below:

Mol	Chain	Res	Type
1	A	115	LYS

5.3.2 Protein sidechains ⓘ

In the following table, the Percentiles column shows the percent sidechain outliers of the chain as a percentile score with respect to all X-ray entries followed by that with respect to entries of similar resolution.

The Analysed column shows the number of residues for which the sidechain conformation was analysed, and the total number of residues.

Mol	Chain	Analysed	Rotameric	Outliers	Percentiles	
1	A	319/311 (103%)	311 (98%)	8 (2%)	53	45
1	B	329/311 (106%)	319 (97%)	10 (3%)	46	37
2	C	35/48 (73%)	34 (97%)	1 (3%)	48	39
2	D	36/48 (75%)	35 (97%)	1 (3%)	49	40
All	All	719/718 (100%)	699 (97%)	20 (3%)	53	40

All (20) residues with a non-rotameric sidechain are listed below:

Mol	Chain	Res	Type
1	A	50	ASN
1	A	690	LYS
1	A	703	LEU
1	A	721	ARG
1	A	729	ARG
1	A	748	ASP
1	A	820	ARG
1	A	821	LEU
1	B	7[A]	THR
1	B	7[B]	THR

Continued on next page...

Continued from previous page...

Mol	Chain	Res	Type
1	B	50	ASN
1	B	687	LEU
1	B	820[A]	ARG
1	B	820[B]	ARG
1	B	821	LEU
1	B	823[A]	LYS
1	B	823[B]	LYS
1	B	840	ARG
2	D	368	LYS
2	C	349	LEU

Some sidechains can be flipped to improve hydrogen bonding and reduce clashes. All (8) such sidechains are listed below:

Mol	Chain	Res	Type
1	A	10	ASN
1	A	97	ASN
1	A	131	HIS
1	B	50	ASN
1	B	131	HIS
1	B	830	HIS
2	D	366	HIS
2	C	365	ASN

5.3.3 RNA ⓘ

There are no RNA molecules in this entry.

5.4 Non-standard residues in protein, DNA, RNA chains ⓘ

There are no non-standard protein/DNA/RNA residues in this entry.

5.5 Carbohydrates ⓘ

There are no carbohydrates in this entry.

5.6 Ligand geometry ⓘ

Of 4 ligands modelled in this entry, 2 are monoatomic - leaving 2 for Mogul analysis.

In the following table, the Counts columns list the number of bonds (or angles) for which Mogul statistics could be retrieved, the number of bonds (or angles) that are observed in the model and the number of bonds (or angles) that are defined in the chemical component dictionary. The Link column lists molecule types, if any, to which the group is linked. The Z score for a bond length (or angle) is the number of standard deviations the observed value is removed from the expected value. A bond length (or angle) with $|Z| > 2$ is considered an outlier worth inspection. RMSZ is the root-mean-square of all Z scores of the bond lengths (or angles).

Mol	Type	Chain	Res	Link	Bond lengths			Bond angles		
					Counts	RMSZ	# Z > 2	Counts	RMSZ	# Z > 2
3	ANP	A	853	4	29,33,33	2.50	5 (17%)	28,52,52	2.06	4 (14%)
3	ANP	B	853	4	29,33,33	2.76	6 (20%)	28,52,52	2.40	6 (21%)

In the following table, the Chirals column lists the number of chiral outliers, the number of chiral centers analysed, the number of these observed in the model and the number defined in the chemical component dictionary. Similar counts are reported in the Torsion and Rings columns. '-' means no outliers of that kind were identified.

Mol	Type	Chain	Res	Link	Chirals	Torsions	Rings
3	ANP	A	853	4	-	0/13/38/38	0/3/3/3
3	ANP	B	853	4	-	0/13/38/38	0/3/3/3

All (11) bond length outliers are listed below:

Mol	Chain	Res	Type	Atoms	Z	Observed(Å)	Ideal(Å)
3	B	853	ANP	PG-O3G	-4.57	1.44	1.56
3	A	853	ANP	PG-O3G	-3.60	1.46	1.56
3	B	853	ANP	C2'-C1'	-3.38	1.48	1.53
3	A	853	ANP	C2'-C1'	-2.64	1.49	1.53
3	B	853	ANP	C2'-C3'	-2.14	1.47	1.53
3	A	853	ANP	C2'-C3'	-2.09	1.47	1.53
3	B	853	ANP	PG-N3B	2.19	1.69	1.63
3	A	853	ANP	PG-O1G	6.10	1.53	1.46
3	B	853	ANP	PG-O1G	8.29	1.55	1.46
3	B	853	ANP	PB-O1B	9.44	1.56	1.46
3	A	853	ANP	PB-O1B	9.69	1.57	1.46

All (10) bond angle outliers are listed below:

Mol	Chain	Res	Type	Atoms	Z	Observed(°)	Ideal(°)
3	B	853	ANP	N3-C2-N1	-8.71	121.27	128.86
3	A	853	ANP	N3-C2-N1	-8.63	121.34	128.86
3	B	853	ANP	O1G-PG-N3B	-6.32	102.34	111.79
3	B	853	ANP	C4'-O4'-C1'	-3.42	106.13	109.77

Continued on next page...

Continued from previous page...

Mol	Chain	Res	Type	Atoms	Z	Observed(°)	Ideal(°)
3	A	853	ANP	C4'-O4'-C1'	-3.39	106.16	109.77
3	B	853	ANP	C4-C5-N7	-2.68	106.82	109.41
3	A	853	ANP	C4-C5-N7	-2.41	107.08	109.41
3	B	853	ANP	O1B-PB-N3B	-2.34	108.29	111.79
3	B	853	ANP	C1'-N9-C4	-2.24	122.77	126.64
3	A	853	ANP	O1G-PG-N3B	2.46	115.46	111.79

There are no chirality outliers.

There are no torsion outliers.

There are no ring outliers.

2 monomers are involved in 3 short contacts:

Mol	Chain	Res	Type	Clashes	Symm-Clashes
3	A	853	ANP	2	0
3	B	853	ANP	1	0

5.7 Other polymers [i](#)

There are no such residues in this entry.

5.8 Polymer linkage issues [i](#)

There are no chain breaks in this entry.

6 Fit of model and data [i](#)

6.1 Protein, DNA and RNA chains [i](#)

In the following table, the column labelled ‘#RSRZ> 2’ contains the number (and percentage) of RSRZ outliers, followed by percent RSRZ outliers for the chain as percentile scores relative to all X-ray entries and entries of similar resolution. The OWAB column contains the minimum, median, 95th percentile and maximum values of the occupancy-weighted average B-factor per residue. The column labelled ‘Q< 0.9’ lists the number of (and percentage) of residues with an average occupancy less than 0.9.

Mol	Chain	Analysed	<RSRZ>	#RSRZ>2	OWAB(Å ²)	Q<0.9
1	A	357/365 (97%)	-0.52	5 (1%) 75 78	12, 23, 41, 67	23 (6%)
1	B	355/365 (97%)	-0.50	2 (0%) 89 90	12, 22, 42, 62	20 (5%)
2	C	35/50 (70%)	0.33	0 100 100	30, 48, 62, 69	10 (28%)
2	D	35/50 (70%)	-0.17	1 (2%) 52 56	23, 32, 53, 74	5 (14%)
All	All	782/830 (94%)	-0.46	8 (1%) 82 84	12, 24, 48, 74	58 (7%)

All (8) RSRZ outliers are listed below:

Mol	Chain	Res	Type	RSRZ
1	A	684	GLY	3.7
2	D	383	SER	3.0
1	A	687	LEU	2.9
1	B	799	GLY	2.7
1	A	685	GLY	2.7
1	A	92	LEU	2.3
1	B	66	VAL	2.3
1	A	690	LYS	2.2

6.2 Non-standard residues in protein, DNA, RNA chains [i](#)

There are no non-standard protein/DNA/RNA residues in this entry.

6.3 Carbohydrates [i](#)

There are no carbohydrates in this entry.

6.4 Ligands [i](#)

In the following table, the Atoms column lists the number of modelled atoms in the group and the number defined in the chemical component dictionary. LLDF column lists the quality of electron density of the group with respect to its neighbouring residues in protein, DNA or RNA chains. The B-factors column lists the minimum, median, 95th percentile and maximum values of B factors of atoms in the group. The column labelled 'Q< 0.9' lists the number of atoms with occupancy less than 0.9.

Mol	Type	Chain	Res	Atoms	RSCC	RSR	LLDF	B-factors(Å ²)	Q<0.9
4	MG	B	854	1/1	0.99	0.10	1.78	14,14,14,14	0
3	ANP	B	853	31/31	0.99	0.07	-0.10	11,14,19,20	0
3	ANP	A	853	31/31	0.99	0.07	-0.12	10,14,17,18	0
4	MG	A	854	1/1	0.99	0.08	-0.29	13,13,13,13	0

6.5 Other polymers [i](#)

There are no such residues in this entry.