



Full wwPDB X-ray Structure Validation Report ⓘ

May 31, 2017 – 05:00 PM EDT

PDB ID : 2QKS
Title : Crystal structure of a Kir3.1-prokaryotic Kir channel chimera
Authors : Nishida, M.; MacKinnon, R.
Deposited on : 2007-07-11
Resolution : 2.20 Å(reported)

This is a Full wwPDB X-ray Structure Validation Report for a publicly released PDB entry.

We welcome your comments at validation@mail.wwpdb.org

A user guide is available at

<http://wwpdb.org/validation/2016/XrayValidationReportHelp>

with specific help available everywhere you see the ⓘ symbol.

The following versions of software and data (see [references ⓘ](#)) were used in the production of this report:

MolProbity : 4.02b-467
Mogul : 1.7.2 (RC1), CSD as538be (2017)
Xtriage (Phenix) : 1.9-1692
EDS : rb-20029077
Percentile statistics : 20161228.v01 (using entries in the PDB archive December 28th 2016)
Refmac : 5.8.0135
CCP4 : 6.5.0
Ideal geometry (proteins) : Engh & Huber (2001)
Ideal geometry (DNA, RNA) : Parkinson et al. (1996)
Validation Pipeline (wwPDB-VP) : rb-20029077

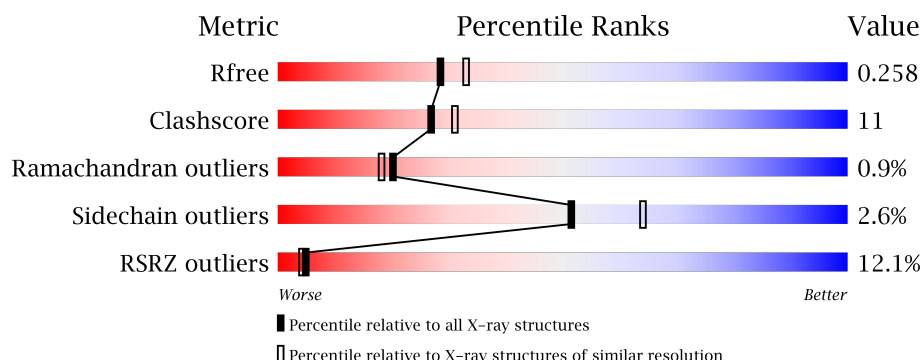
1 Overall quality at a glance

The following experimental techniques were used to determine the structure:

X-RAY DIFFRACTION

The reported resolution of this entry is 2.20 Å.

Percentile scores (ranging between 0-100) for global validation metrics of the entry are shown in the following graphic. The table shows the number of entries on which the scores are based.



Metric	Whole archive (#Entries)	Similar resolution (#Entries, resolution range(Å))
R_{free}	100719	4002 (2.20-2.20)
Clashscore	112137	4730 (2.20-2.20)
Ramachandran outliers	110173	4656 (2.20-2.20)
Sidechain outliers	110143	4657 (2.20-2.20)
RSRZ outliers	101464	4033 (2.20-2.20)

The table below summarises the geometric issues observed across the polymeric chains and their fit to the electron density. The red, orange, yellow and green segments on the lower bar indicate the fraction of residues that contain outliers for ≥ 3 , 2, 1 and 0 types of geometric quality criteria. A grey segment represents the fraction of residues that are not modelled. The numeric value for each fraction is indicated below the corresponding segment, with a dot representing fractions $\leq 5\%$. The upper red bar (where present) indicates the fraction of residues that have poor fit to the electron density. The numeric value is given above the bar.

Mol	Chain	Length	Quality of chain
1	A	321	<div> <div>9%</div> <div>69%</div> <div>23%</div> <div>6%</div> </div>
1	B	321	<div> <div>13%</div> <div>70%</div> <div>20%</div> <div>8%</div> </div>

2 Entry composition

There are 4 unique types of molecules in this entry. The entry contains 4919 atoms, of which 0 are hydrogens and 0 are deuteriums.

In the tables below, the ZeroOcc column contains the number of atoms modelled with zero occupancy, the AltConf column contains the number of residues with at least one atom in alternate conformation and the Trace column contains the number of residues modelled with at most 2 atoms.

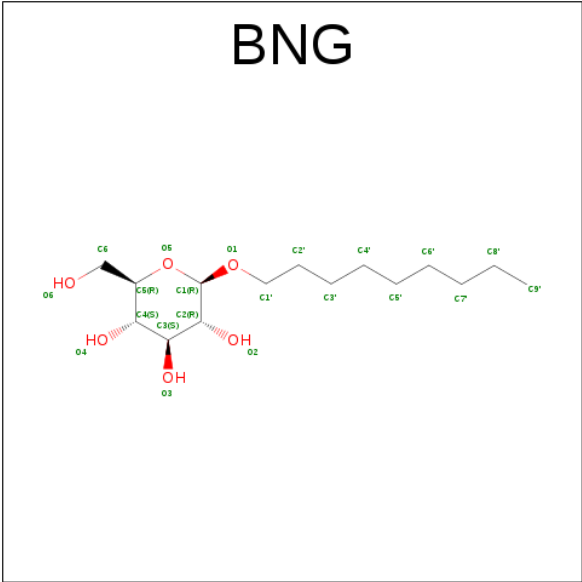
- Molecule 1 is a protein called Kir3.1-prokaryotic Kir channel chimera.

Mol	Chain	Residues	Atoms					ZeroOcc	AltConf	Trace
1	A	302	Total	C	N	O	S	0	4	0
			2381	1538	393	433	17			
1	B	294	Total	C	N	O	S	0	2	0
			2279	1480	359	422	18			

There are 12 discrepancies between the modelled and reference sequences:

Chain	Residue	Modelled	Actual	Comment	Reference
A	1	GLY	-	expression tag	UNP P63250
A	2	SER	-	expression tag	UNP P63250
A	127	ALA	MET	engineered mutation	UNP P63250
A	319	VAL	-	expression tag	UNP P63250
A	320	PRO	-	expression tag	UNP P63250
A	321	ARG	-	expression tag	UNP P63250
B	1	GLY	-	expression tag	UNP P63250
B	2	SER	-	expression tag	UNP P63250
B	127	ALA	MET	engineered mutation	UNP P63250
B	319	VAL	-	expression tag	UNP P63250
B	320	PRO	-	expression tag	UNP P63250
B	321	ARG	-	expression tag	UNP P63250

- Molecule 2 is B-NONYLGLUCOSIDE (three-letter code: BNG) (formula: C₁₅H₃₀O₆).



Mol	Chain	Residues	Atoms		ZeroOcc	AltConf
2	A	1	Total	C O	0	0
			21	15 6		

- Molecule 3 is POTASSIUM ION (three-letter code: K) (formula: K).

Mol	Chain	Residues	Atoms		ZeroOcc	AltConf
3	B	5	Total	K	0	0
			5	5		
3	A	7	Total	K	0	0
			7	7		

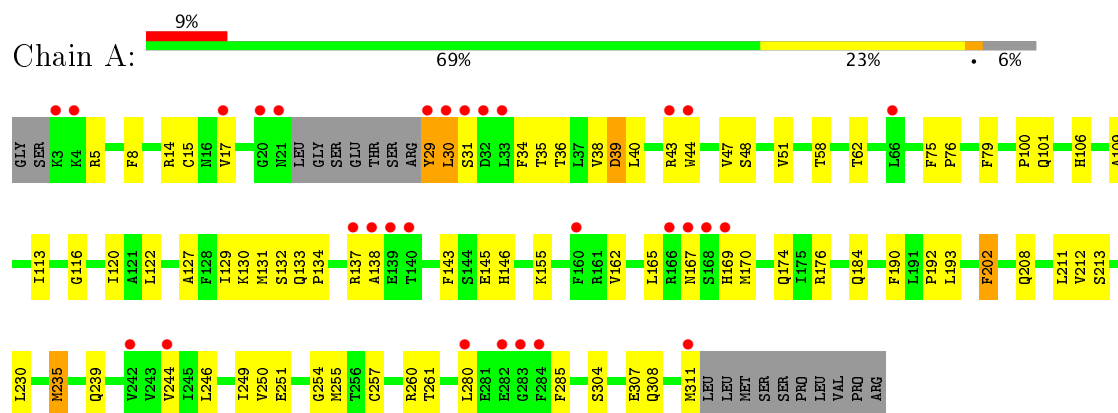
- Molecule 4 is water.

Mol	Chain	Residues	Atoms		ZeroOcc	AltConf
4	A	140	Total	O	0	0
			140	140		
4	B	86	Total	O	0	0
			86	86		

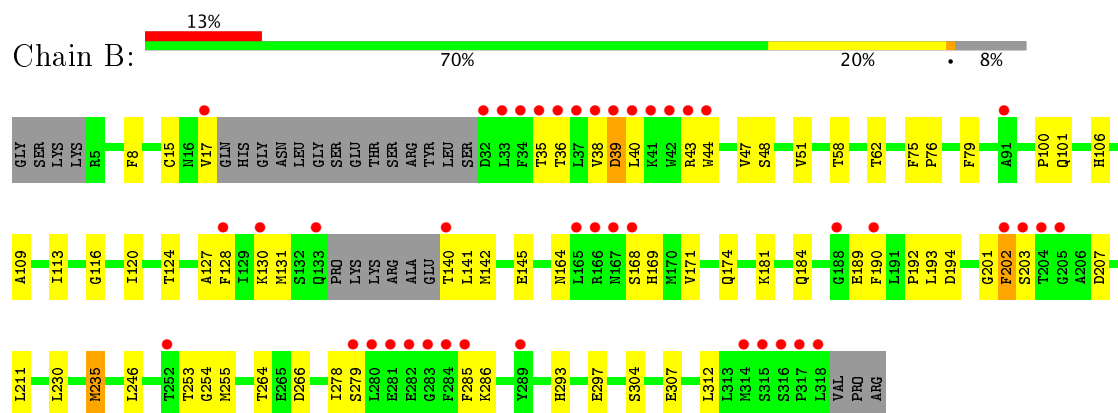
3 Residue-property plots [i](#)

These plots are drawn for all protein, RNA and DNA chains in the entry. The first graphic for a chain summarises the proportions of the various outlier classes displayed in the second graphic. The second graphic shows the sequence view annotated by issues in geometry and electron density. Residues are color-coded according to the number of geometric quality criteria for which they contain at least one outlier: green = 0, yellow = 1, orange = 2 and red = 3 or more. A red dot above a residue indicates a poor fit to the electron density ($RSRZ > 2$). Stretches of 2 or more consecutive residues without any outlier are shown as a green connector. Residues present in the sample, but not in the model, are shown in grey.

- Molecule 1: Kir3.1-prokaryotic Kir channel chimera



- Molecule 1: Kir3.1-prokaryotic Kir channel chimera



4 Data and refinement statistics

Property	Value	Source
Space group	P 4	Depositor
Cell constants a, b, c, α , β , γ	98.42Å 98.42Å 92.62Å 90.00° 90.00° 90.00°	Depositor
Resolution (Å)	29.50 – 2.20 29.50 – 2.20	Depositor EDS
% Data completeness (in resolution range)	97.9 (29.50-2.20) 97.9 (29.50-2.20)	Depositor EDS
R_{merge}	(Not available)	Depositor
R_{sym}	0.05	Depositor
$\langle I/\sigma(I) \rangle$ ¹	3.21 (at 2.20Å)	Xtriage
Refinement program	CNS	Depositor
R, R_{free}	0.231 , 0.256 0.233 , 0.258	Depositor DCC
R_{free} test set	2179 reflections (4.95%)	DCC
Wilson B-factor (Å ²)	43.9	Xtriage
Anisotropy	0.027	Xtriage
Bulk solvent k_{sol} (e/Å ³), B_{sol} (Å ²)	0.36 , 56.0	EDS
L-test for twinning ²	$\langle L \rangle = 0.51$, $\langle L^2 \rangle = 0.34$	Xtriage
Estimated twinning fraction	0.034 for h,-k,-l	Xtriage
F_o, F_c correlation	0.94	EDS
Total number of atoms	4919	wwPDB-VP
Average B, all atoms (Å ²)	51.0	wwPDB-VP

Xtriage's analysis on translational NCS is as follows: *The largest off-origin peak in the Patterson function is 4.24% of the height of the origin peak. No significant pseudotranslation is detected.*

¹Intensities estimated from amplitudes.

²Theoretical values of $\langle |L| \rangle$, $\langle L^2 \rangle$ for acentric reflections are 0.5, 0.333 respectively for untwinned datasets, and 0.375, 0.2 for perfectly twinned datasets.

5 Model quality

5.1 Standard geometry

Bond lengths and bond angles in the following residue types are not validated in this section: K, BNG

The Z score for a bond length (or angle) is the number of standard deviations the observed value is removed from the expected value. A bond length (or angle) with $|Z| > 5$ is considered an outlier worth inspection. RMSZ is the root-mean-square of all Z scores of the bond lengths (or angles).

Mol	Chain	Bond lengths		Bond angles	
		RMSZ	# Z >5	RMSZ	# Z >5
1	A	0.44	0/2461	0.62	0/3340
1	B	0.41	0/2345	0.61	0/3187
All	All	0.42	0/4806	0.61	0/6527

There are no bond length outliers.

There are no bond angle outliers.

There are no chirality outliers.

There are no planarity outliers.

5.2 Too-close contacts

In the following table, the Non-H and H(model) columns list the number of non-hydrogen atoms and hydrogen atoms in the chain respectively. The H(added) column lists the number of hydrogen atoms added and optimized by MolProbity. The Clashes column lists the number of clashes within the asymmetric unit, whereas Symm-Clashes lists symmetry related clashes.

Mol	Chain	Non-H	H(model)	H(added)	Clashes	Symm-Clashes
1	A	2381	0	2307	56	0
1	B	2279	0	2192	50	0
2	A	21	0	30	3	0
3	A	7	0	0	0	0
3	B	5	0	0	0	0
4	A	140	0	0	4	0
4	B	86	0	0	0	0
All	All	4919	0	4529	106	0

The all-atom clashscore is defined as the number of clashes found per 1000 atoms (including hydrogen atoms). The all-atom clashscore for this structure is 11.

All (106) close contacts within the same asymmetric unit are listed below, sorted by their clash magnitude.

Atom-1	Atom-2	Interatomic distance (Å)	Clash overlap (Å)
1:B:140:THR:HB	1:B:168:SER:HB2	1.58	0.85
1:B:141:LEU:HG	1:B:142:MET:H	1.43	0.83
1:B:15[B]:CYS:SG	1:B:17:VAL:HG23	2.22	0.80
1:A:212:VAL:HG23	1:A:213:SER:H	1.48	0.78
1:B:141:LEU:HD22	1:B:246:LEU:HD23	1.72	0.72
1:A:190:PHE:CE2	1:A:192:PRO:HG3	2.28	0.69
1:B:141:LEU:HG	1:B:142:MET:N	2.08	0.68
1:B:230:LEU:HD11	1:B:235:MET:HG2	1.77	0.65
1:B:141:LEU:CD2	1:B:246:LEU:HD23	2.26	0.65
1:A:170:MET:HA	1:A:249:ILE:O	1.94	0.65
1:A:230:LEU:HD11	1:A:235:MET:HG2	1.79	0.64
1:A:304:SER:O	1:A:308:GLN:HG3	1.98	0.64
1:A:137[A]:ARG:HH11	1:A:137[A]:ARG:HB3	1.62	0.63
1:A:58:THR:O	1:A:62:THR:HG23	2.01	0.61
1:B:58:THR:O	1:B:62:THR:HG23	2.01	0.60
1:B:253:THR:O	1:B:255:MET:N	2.34	0.59
1:A:14:ARG:HH11	1:A:14:ARG:HG2	1.66	0.59
1:B:164:ASN:HD21	1:B:169:HIS:HA	1.67	0.59
1:B:35:THR:HG22	1:B:39:ASP:OD2	2.03	0.58
1:A:35:THR:HG22	1:A:39:ASP:OD2	2.04	0.56
1:B:253:THR:C	1:B:255:MET:H	2.09	0.56
1:A:30:LEU:O	1:A:30:LEU:HD23	2.07	0.55
1:A:307:GLU:O	1:A:311:MET:HB3	2.06	0.55
1:B:201:GLY:C	1:B:203:SER:H	2.09	0.55
1:A:30:LEU:HD13	2:A:322:BNG:H4'2	1.88	0.54
1:B:278:ILE:HA	1:B:286:LYS:O	2.08	0.54
1:B:171:VAL:O	1:B:211:LEU:N	2.37	0.54
1:B:201:GLY:C	1:B:203:SER:N	2.61	0.54
1:A:145:GLU:OE1	1:A:146:HIS:NE2	2.40	0.54
1:B:279:SER:O	1:B:285:PHE:HA	2.08	0.53
1:A:143:PHE:CD2	1:A:162:VAL:HG12	2.44	0.52
1:B:8:PHE:CD2	1:B:193:LEU:HD21	2.45	0.52
1:A:212:VAL:HG23	1:A:213:SER:N	2.21	0.51
1:B:8:PHE:CE2	1:B:193:LEU:HD21	2.44	0.51
1:B:184:GLN:HA	1:B:189:GLU:O	2.10	0.50
1:A:44:TRP:O	1:A:48:SER:HB2	2.12	0.50
1:B:44:TRP:O	1:B:48:SER:HB2	2.12	0.49
1:A:43:ARG:O	1:A:47:VAL:HG23	2.12	0.49
1:B:201:GLY:O	1:B:203:SER:N	2.46	0.49
1:A:116:GLY:O	1:A:120:ILE:HG13	2.11	0.49

Continued on next page...

Continued from previous page...

Atom-1	Atom-2	Interatomic distance (Å)	Clash overlap (Å)
1:B:297:GLU:H	1:B:297:GLU:CD	2.16	0.49
1:A:62:THR:HG22	1:A:79:PHE:HE1	1.78	0.49
1:B:145:GLU:HG3	1:B:293:HIS:ND1	2.28	0.48
1:A:14:ARG:HG2	1:A:14:ARG:NH1	2.28	0.48
1:B:8:PHE:CZ	1:B:193:LEU:HD21	2.48	0.48
1:B:202:PHE:N	1:B:207:ASP:HB3	2.29	0.48
1:A:202:PHE:HB3	4:A:423:HOH:O	2.12	0.48
1:B:109:ALA:O	1:B:113:ILE:HG13	2.13	0.48
1:B:202:PHE:HA	1:B:207:ASP:CG	2.33	0.48
1:B:116:GLY:O	1:B:120:ILE:HG13	2.13	0.48
1:A:260[B]:ARG:NH2	4:A:532:HOH:O	2.45	0.48
1:B:38:VAL:O	1:B:130:LYS:HD3	2.14	0.48
1:B:62:THR:HG22	1:B:79:PHE:HE1	1.79	0.47
1:A:127:ALA:O	1:A:131:MET:HG3	2.14	0.47
1:B:127:ALA:O	1:B:131:MET:HG3	2.15	0.47
1:B:181:LYS:O	1:B:194:ASP:HB3	2.14	0.47
1:A:132:SER:O	1:A:255:MET:HG3	2.15	0.47
1:A:36:THR:O	1:A:40:LEU:HG	2.15	0.47
1:B:190:PHE:O	1:B:192:PRO:HD3	2.14	0.46
1:A:134:PRO:HG2	1:A:257:CYS:HB3	1.97	0.46
1:B:140:THR:CB	1:B:168:SER:HB2	2.39	0.46
1:B:36:THR:O	1:B:40:LEU:HG	2.16	0.46
1:A:109:ALA:O	1:A:113:ILE:HG13	2.15	0.46
1:A:38:VAL:O	1:A:130:LYS:HD3	2.16	0.45
1:B:8:PHE:CG	1:B:193:LEU:HD21	2.51	0.45
1:B:47:VAL:O	1:B:51:VAL:HG23	2.16	0.45
1:A:29:TYR:C	1:A:31:SER:H	2.20	0.45
1:B:43:ARG:O	1:B:47:VAL:HG23	2.16	0.45
1:B:174:GLN:O	1:B:246:LEU:HD12	2.17	0.45
1:A:129:ILE:O	1:A:133:GLN:HG2	2.16	0.44
1:B:8:PHE:CE1	1:B:193:LEU:HD21	2.52	0.44
1:A:250:VAL:O	1:A:254:GLY:N	2.46	0.44
1:A:174:GLN:CD	1:A:208:GLN:HE22	2.22	0.43
1:A:47:VAL:O	1:A:51:VAL:HG23	2.18	0.43
1:A:15:CYS:SG	1:A:260[A]:ARG:NH2	2.92	0.43
1:B:8:PHE:CD1	1:B:193:LEU:HD21	2.53	0.43
1:A:176[B]:ARG:HG2	4:A:459:HOH:O	2.17	0.43
1:A:75:PHE:CD1	1:A:76:PRO:HA	2.54	0.43
1:B:75:PHE:CD1	1:B:76:PRO:HA	2.53	0.42
1:A:31:SER:HA	2:A:322:BNG:H61	2.00	0.42
1:A:244:VAL:HB	1:A:261:THR:HG22	2.02	0.42

Continued on next page...

Continued from previous page...

Atom-1	Atom-2	Interatomic distance (Å)	Clash overlap (Å)
1:A:174:GLN:O	1:A:246:LEU:HD12	2.19	0.42
1:A:169:HIS:O	1:A:251:GLU:HB2	2.20	0.42
1:B:304:SER:OG	1:B:307:GLU:HG3	2.19	0.42
1:B:266:ASP:N	1:B:266:ASP:OD2	2.52	0.42
1:B:264:THR:OG1	1:B:266:ASP:OD2	2.29	0.42
1:B:100:PRO:HB2	1:B:106:HIS:CE1	2.55	0.42
1:A:170:MET:CA	1:A:249:ILE:O	2.65	0.42
1:A:145:GLU:OE1	1:A:146:HIS:CE1	2.73	0.41
1:A:30:LEU:HD23	1:A:34:PHE:N	2.34	0.41
1:A:100:PRO:HB2	1:A:106:HIS:CE1	2.55	0.41
1:A:280:LEU:HG	1:A:285:PHE:CE1	2.56	0.41
1:B:124:THR:HG22	1:B:128[A]:PHE:CZ	2.55	0.41
1:A:5:ARG:CZ	1:A:239:GLN:HG3	2.51	0.41
1:A:30:LEU:O	1:A:34:PHE:HB2	2.21	0.41
1:A:155:LYS:HD2	4:A:434:HOH:O	2.20	0.40
1:A:8:PHE:CD1	1:A:193:LEU:HD21	2.56	0.40
1:A:122:LEU:HB3	2:A:322:BNG:H6'1	2.03	0.40
1:A:304:SER:OG	1:A:307:GLU:HG3	2.22	0.40
1:B:141:LEU:CG	1:B:142:MET:N	2.82	0.40
1:B:190:PHE:CE2	1:B:192:PRO:HG3	2.57	0.40

There are no symmetry-related clashes.

5.3 Torsion angles [i](#)

5.3.1 Protein backbone [i](#)

In the following table, the Percentiles column shows the percent Ramachandran outliers of the chain as a percentile score with respect to all X-ray entries followed by that with respect to entries of similar resolution.

The Analysed column shows the number of residues for which the backbone conformation was analysed, and the total number of residues.

Mol	Chain	Analysed	Favoured	Allowed	Outliers	Percentiles	
1	A	302/321 (94%)	286 (95%)	13 (4%)	3 (1%)	18	16
1	B	290/321 (90%)	273 (94%)	15 (5%)	2 (1%)	25	24
All	All	592/642 (92%)	559 (94%)	28 (5%)	5 (1%)	20	21

All (5) Ramachandran outliers are listed below:

Mol	Chain	Res	Type
1	A	165	LEU
1	B	254	GLY
1	A	138	ALA
1	A	167	ASN
1	B	202	PHE

5.3.2 Protein sidechains ⓘ

In the following table, the Percentiles column shows the percent sidechain outliers of the chain as a percentile score with respect to all X-ray entries followed by that with respect to entries of similar resolution.

The Analysed column shows the number of residues for which the sidechain conformation was analysed, and the total number of residues.

Mol	Chain	Analysed	Rotameric	Outliers	Percentiles	
1	A	257/280 (92%)	248 (96%)	9 (4%)	41	51
1	B	246/280 (88%)	242 (98%)	4 (2%)	68	81
All	All	503/560 (90%)	490 (97%)	13 (3%)	51	64

All (13) residues with a non-rotameric sidechain are listed below:

Mol	Chain	Res	Type
1	A	17	VAL
1	A	29	TYR
1	A	30	LEU
1	A	39	ASP
1	A	101	GLN
1	A	184	GLN
1	A	202	PHE
1	A	211	LEU
1	A	235	MET
1	B	39	ASP
1	B	101	GLN
1	B	235	MET
1	B	312	LEU

Some sidechains can be flipped to improve hydrogen bonding and reduce clashes. All (9) such sidechains are listed below:

Mol	Chain	Res	Type
1	A	101	GLN

Continued on next page...

Continued from previous page...

Mol	Chain	Res	Type
1	A	174	GLN
1	A	184	GLN
1	A	208	GLN
1	B	101	GLN
1	B	164	ASN
1	B	174	GLN
1	B	208	GLN
1	B	258	GLN

5.3.3 RNA [i](#)

There are no RNA molecules in this entry.

5.4 Non-standard residues in protein, DNA, RNA chains [i](#)

There are no non-standard protein/DNA/RNA residues in this entry.

5.5 Carbohydrates [i](#)

There are no carbohydrates in this entry.

5.6 Ligand geometry [i](#)

Of 13 ligands modelled in this entry, 12 are monoatomic - leaving 1 for Mogul analysis.

In the following table, the Counts columns list the number of bonds (or angles) for which Mogul statistics could be retrieved, the number of bonds (or angles) that are observed in the model and the number of bonds (or angles) that are defined in the chemical component dictionary. The Link column lists molecule types, if any, to which the group is linked. The Z score for a bond length (or angle) is the number of standard deviations the observed value is removed from the expected value. A bond length (or angle) with $|Z| > 2$ is considered an outlier worth inspection. RMSZ is the root-mean-square of all Z scores of the bond lengths (or angles).

Mol	Type	Chain	Res	Link	Bond lengths			Bond angles		
					Counts	RMSZ	$\# Z > 2$	Counts	RMSZ	$\# Z > 2$
2	BNG	A	322	-	21,21,21	0.84	2 (9%)	26,26,26	0.96	1 (3%)

In the following table, the Chirals column lists the number of chiral outliers, the number of chiral centers analysed, the number of these observed in the model and the number defined in the chemical component dictionary. Similar counts are reported in the Torsion and Rings columns. '-' means

no outliers of that kind were identified.

Mol	Type	Chain	Res	Link	Chirals	Torsions	Rings
2	BNG	A	322	-	-	0/12/32/32	0/1/1/1

All (2) bond length outliers are listed below:

Mol	Chain	Res	Type	Atoms	Z	Observed(Å)	Ideal(Å)
2	A	322	BNG	O5-C1	2.03	1.46	1.41
2	A	322	BNG	O1-C1	2.30	1.44	1.40

All (1) bond angle outliers are listed below:

Mol	Chain	Res	Type	Atoms	Z	Observed(°)	Ideal(°)
2	A	322	BNG	C1'-O1-C1	-2.29	109.93	113.87

There are no chirality outliers.

There are no torsion outliers.

There are no ring outliers.

1 monomer is involved in 3 short contacts:

Mol	Chain	Res	Type	Clashes	Symm-Clashes
2	A	322	BNG	3	0

5.7 Other polymers [i](#)

There are no such residues in this entry.

5.8 Polymer linkage issues [i](#)

There are no chain breaks in this entry.

6 Fit of model and data ⓘ

6.1 Protein, DNA and RNA chains ⓘ

In the following table, the column labelled ‘#RSRZ> 2’ contains the number (and percentage) of RSRZ outliers, followed by percent RSRZ outliers for the chain as percentile scores relative to all X-ray entries and entries of similar resolution. The OWAB column contains the minimum, median, 95th percentile and maximum values of the occupancy-weighted average B-factor per residue. The column labelled ‘Q< 0.9’ lists the number of (and percentage) of residues with an average occupancy less than 0.9.

Mol	Chain	Analysed	<RSRZ>	#RSRZ>2	OWAB(Å ²)	Q<0.9
1	A	302/321 (94%)	0.41	29 (9%) 9 7	26, 43, 78, 101	0
1	B	294/321 (91%)	0.64	43 (14%) 3 2	29, 51, 91, 103	0
All	All	596/642 (92%)	0.52	72 (12%) 5 4	26, 46, 88, 103	0

All (72) RSRZ outliers are listed below:

Mol	Chain	Res	Type	RSRZ
1	A	21	ASN	8.2
1	B	34	PHE	7.7
1	B	280	LEU	7.7
1	A	3	LYS	7.6
1	B	165	LEU	7.6
1	B	133	GLN	6.9
1	A	168	SER	6.4
1	A	138	ALA	6.4
1	B	33	LEU	6.3
1	B	168	SER	6.1
1	B	202	PHE	6.1
1	B	281	GLU	5.7
1	B	282	GLU	5.4
1	B	40	LEU	5.3
1	A	29	TYR	5.2
1	B	167	ASN	5.2
1	A	284	PHE	5.1
1	B	44	TRP	5.1
1	A	31	SER	5.1
1	B	32	ASP	4.7
1	A	169	HIS	4.6
1	B	38	VAL	4.5
1	B	317	PRO	4.4
1	B	36	THR	4.3

Continued on next page...

Continued from previous page...

Mol	Chain	Res	Type	RSRZ
1	A	44	TRP	4.1
1	B	37	LEU	4.0
1	A	20	GLY	4.0
1	B	314	MET	4.0
1	A	167	ASN	4.0
1	B	35	THR	3.9
1	A	139	GLU	3.9
1	B	283	GLY	3.7
1	B	203	SER	3.7
1	A	282	GLU	3.5
1	B	284	PHE	3.4
1	B	17	VAL	3.3
1	B	318	LEU	3.3
1	A	137[A]	ARG	3.3
1	A	283	GLY	3.2
1	A	17	VAL	3.1
1	B	166	ARG	3.0
1	B	252	THR	2.8
1	B	285	PHE	2.8
1	B	316	SER	2.8
1	B	41	LYS	2.8
1	B	39	ASP	2.7
1	B	289	TYR	2.7
1	B	205	GLY	2.7
1	B	190	PHE	2.7
1	B	188	GLY	2.6
1	A	244	VAL	2.5
1	B	91	ALA	2.5
1	A	32	ASP	2.5
1	A	30	LEU	2.5
1	B	42	TRP	2.4
1	A	280	LEU	2.4
1	B	279	SER	2.4
1	B	130	LYS	2.4
1	A	160	PHE	2.4
1	B	140	THR	2.4
1	A	66	LEU	2.4
1	A	311	MET	2.4
1	A	33	LEU	2.3
1	B	43	ARG	2.3
1	A	43	ARG	2.2
1	A	140	THR	2.2

Continued on next page...

Continued from previous page...

Mol	Chain	Res	Type	RSRZ
1	B	315	SER	2.2
1	A	4	LYS	2.1
1	A	242	VAL	2.1
1	B	128[A]	PHE	2.1
1	A	166	ARG	2.1
1	B	204	THR	2.1

6.2 Non-standard residues in protein, DNA, RNA chains [i](#)

There are no non-standard protein/DNA/RNA residues in this entry.

6.3 Carbohydrates [i](#)

There are no carbohydrates in this entry.

6.4 Ligands [i](#)

In the following table, the Atoms column lists the number of modelled atoms in the group and the number defined in the chemical component dictionary. LLDF column lists the quality of electron density of the group with respect to its neighbouring residues in protein, DNA or RNA chains. The B-factors column lists the minimum, median, 95th percentile and maximum values of B factors of atoms in the group. The column labelled 'Q< 0.9' lists the number of atoms with occupancy less than 0.9.

Mol	Type	Chain	Res	Atoms	RSCC	RSR	LLDF	B-factors(Å ²)	Q<0.9
2	BNG	A	322	21/21	0.72	0.29	1.02	85,91,93,94	0
3	K	A	401	1/1	0.91	0.14	-	35,35,35,35	1
3	K	B	411	1/1	0.95	0.14	-	63,63,63,63	1
3	K	A	406	1/1	0.70	0.37	-	111,111,111,111	1
3	K	B	410	1/1	0.95	0.06	-	36,36,36,36	1
3	K	A	402	1/1	0.97	0.09	-	26,26,26,26	1
3	K	A	407	1/1	0.79	0.22	-	104,104,104,104	1
3	K	B	412	1/1	0.69	0.52	-	101,101,101,101	1
3	K	A	403	1/1	1.00	0.13	-	36,36,36,36	1
3	K	B	409	1/1	0.98	0.10	-	37,37,37,37	1
3	K	A	404	1/1	0.95	0.18	-	52,52,52,52	1
3	K	B	408	1/1	0.92	0.08	-	34,34,34,34	1
3	K	A	405	1/1	0.45	0.34	-	109,109,109,109	1

6.5 Other polymers [i](#)

There are no such residues in this entry.