



Full wwPDB X-ray Structure Validation Report ⓘ

Oct 12, 2017 – 07:27 PM EDT

PDB ID : 2QL6
Title : human nicotinamide riboside kinase (NRK1)
Authors : Khan, J.A.; Xiang, S.; Tong, L.
Deposited on : unknown
Resolution : 2.70 Å(reported)

This is a Full wwPDB X-ray Structure Validation Report for a publicly released PDB entry.

We welcome your comments at validation@mail.wwpdb.org

A user guide is available at

<http://wwpdb.org/validation/2016/XrayValidationReportHelp>

with specific help available everywhere you see the ⓘ symbol.

The following versions of software and data (see [references ⓘ](#)) were used in the production of this report:

MolProbity : 4.02b-467
Mogul : 1.7.2 (RC1), CSD as538be (2017)
Xtriage (Phenix) : 1.9-1692
EDS : rb-20030345
Percentile statistics : 20161228.v01 (using entries in the PDB archive December 28th 2016)
Refmac : 5.8.0135
CCP4 : 6.5.0
Ideal geometry (proteins) : Engh & Huber (2001)
Ideal geometry (DNA, RNA) : Parkinson et al. (1996)
Validation Pipeline (wwPDB-VP) : rb-20030345

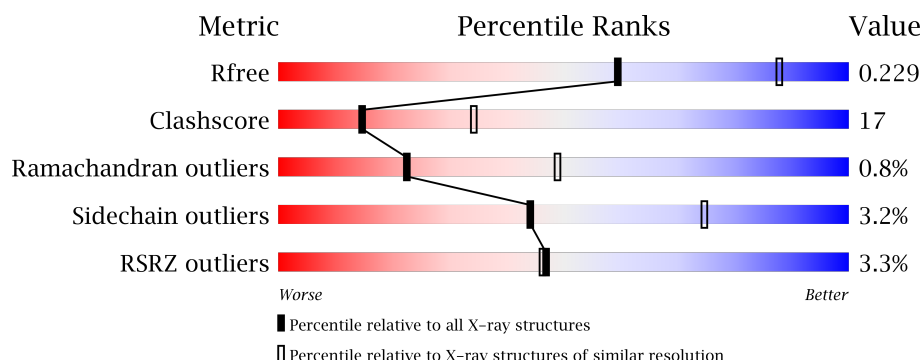
1 Overall quality at a glance

The following experimental techniques were used to determine the structure:

X-RAY DIFFRACTION

The reported resolution of this entry is 2.70 Å.

Percentile scores (ranging between 0-100) for global validation metrics of the entry are shown in the following graphic. The table shows the number of entries on which the scores are based.



Metric	Whole archive (#Entries)	Similar resolution (#Entries, resolution range(Å))
R_{free}	100719	2259 (2.70-2.70)
Clashscore	112137	2590 (2.70-2.70)
Ramachandran outliers	110173	2550 (2.70-2.70)
Sidechain outliers	110143	2550 (2.70-2.70)
RSRZ outliers	101464	2275 (2.70-2.70)

The table below summarises the geometric issues observed across the polymeric chains and their fit to the electron density. The red, orange, yellow and green segments on the lower bar indicate the fraction of residues that contain outliers for ≥ 3 , 2, 1 and 0 types of geometric quality criteria. A grey segment represents the fraction of residues that are not modelled. The numeric value for each fraction is indicated below the corresponding segment, with a dot representing fractions $\leq 5\%$. The upper red bar (where present) indicates the fraction of residues that have poor fit to the electron density. The numeric value is given above the bar.

Mol	Chain	Length	Quality of chain
1	A	199	<div> <div>4%</div> <div>60%</div> <div>28%</div> <div>10%</div> </div>
1	B	199	<div> <div>%</div> <div>57%</div> <div>31%</div> <div>10%</div> </div>
1	C	199	<div> <div>4%</div> <div>57%</div> <div>32%</div> <div>10%</div> </div>
1	D	199	<div> <div>2%</div> <div>58%</div> <div>31%</div> <div>10%</div> </div>
1	E	199	<div> <div>3%</div> <div>60%</div> <div>29%</div> <div>10%</div> </div>

Continued on next page...

Continued from previous page...

Mol	Chain	Length	Quality of chain
1	F	199	
1	G	199	
1	H	199	
1	I	199	
1	J	199	
1	K	199	
1	L	199	
1	M	199	
1	N	199	
1	O	199	
1	P	199	

The following table lists non-polymeric compounds, carbohydrate monomers and non-standard residues in protein, DNA, RNA chains that are outliers for geometric or electron-density-fit criteria:

Mol	Type	Chain	Res	Chirality	Geometry	Clashes	Electron density
3	TIZ	N	302	-	-	-	X

2 Entry composition [i](#)

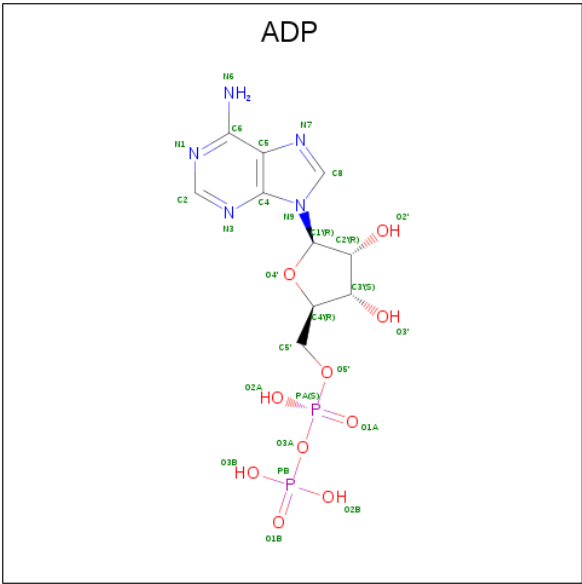
There are 3 unique types of molecules in this entry. The entry contains 24416 atoms, of which 0 are hydrogens and 0 are deuteriums.

In the tables below, the ZeroOcc column contains the number of atoms modelled with zero occupancy, the AltConf column contains the number of residues with at least one atom in alternate conformation and the Trace column contains the number of residues modelled with at most 2 atoms.

- Molecule 1 is a protein called nicotinamide riboside kinase 1.

Mol	Chain	Residues	Atoms						ZeroOcc	AltConf	Trace
1	A	179	Total	C	N	O	S	Se	0	0	0
			1482	956	238	279	3	6			
1	B	179	Total	C	N	O	S	Se	0	0	0
			1482	956	238	279	3	6			
1	C	179	Total	C	N	O	S	Se	0	0	0
			1482	956	238	279	3	6			
1	D	179	Total	C	N	O	S	Se	0	0	0
			1482	956	238	279	3	6			
1	E	179	Total	C	N	O	S	Se	0	0	0
			1482	956	238	279	3	6			
1	F	179	Total	C	N	O	S	Se	0	0	0
			1482	956	238	279	3	6			
1	G	179	Total	C	N	O	S	Se	0	0	0
			1482	956	238	279	3	6			
1	H	179	Total	C	N	O	S	Se	0	0	0
			1482	956	238	279	3	6			
1	I	179	Total	C	N	O	S	Se	0	0	0
			1482	956	238	279	3	6			
1	J	179	Total	C	N	O	S	Se	0	0	0
			1482	956	238	279	3	6			
1	K	179	Total	C	N	O	S	Se	0	0	0
			1482	956	238	279	3	6			
1	L	179	Total	C	N	O	S	Se	0	0	0
			1482	956	238	279	3	6			
1	M	179	Total	C	N	O	S	Se	0	0	0
			1482	956	238	279	3	6			
1	N	179	Total	C	N	O	S	Se	0	0	0
			1482	956	238	279	3	6			
1	O	179	Total	C	N	O	S	Se	0	0	0
			1482	956	238	279	3	6			
1	P	179	Total	C	N	O	S	Se	0	0	0
			1482	956	238	279	3	6			

- Molecule 2 is ADENOSINE-5'-DIPHOSPHATE (three-letter code: ADP) (formula: C₁₀H₁₅N₅O₁₀P₂).



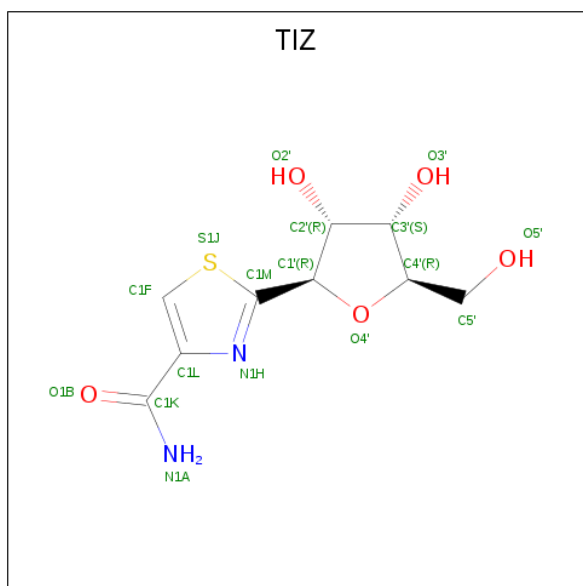
Mol	Chain	Residues	Atoms					ZeroOcc	AltConf
2	A	1	Total	C	N	O	P	0	0
			27	10	5	10	2		
2	B	1	Total	C	N	O	P	0	0
			27	10	5	10	2		
2	C	1	Total	C	N	O	P	0	0
			27	10	5	10	2		
2	D	1	Total	C	N	O	P	0	0
			27	10	5	10	2		
2	E	1	Total	C	N	O	P	0	0
			27	10	5	10	2		
2	F	1	Total	C	N	O	P	0	0
			27	10	5	10	2		
2	G	1	Total	C	N	O	P	0	0
			27	10	5	10	2		
2	H	1	Total	C	N	O	P	0	0
			27	10	5	10	2		
2	I	1	Total	C	N	O	P	0	0
			27	10	5	10	2		
2	J	1	Total	C	N	O	P	0	0
			27	10	5	10	2		
2	K	1	Total	C	N	O	P	0	0
			27	10	5	10	2		
2	L	1	Total	C	N	O	P	0	0
			27	10	5	10	2		

Continued on next page...

Continued from previous page...

Mol	Chain	Residues	Atoms					ZeroOcc	AltConf
2	M	1	Total	C	N	O	P	0	0
			27	10	5	10	2		
2	N	1	Total	C	N	O	P	0	0
			27	10	5	10	2		
2	O	1	Total	C	N	O	P	0	0
			27	10	5	10	2		
2	P	1	Total	C	N	O	P	0	0
			27	10	5	10	2		

- Molecule 3 is (1R)-1-[4-(AMINOCARBONYL)-1,3-THIAZOL-2-YL]-1,4-ANHYDRO-D-RIBITOL (three-letter code: TIZ) (formula: C₉H₁₂N₂O₅S).



Mol	Chain	Residues	Atoms					ZeroOcc	AltConf
3	A	1	Total	C	N	O	S	0	0
			17	9	2	5	1		
3	B	1	Total	C	N	O	S	0	0
			17	9	2	5	1		
3	C	1	Total	C	N	O	S	0	0
			17	9	2	5	1		
3	D	1	Total	C	N	O	S	0	0
			17	9	2	5	1		
3	E	1	Total	C	N	O	S	0	0
			17	9	2	5	1		
3	F	1	Total	C	N	O	S	0	0
			17	9	2	5	1		
3	G	1	Total	C	N	O	S	0	0
			17	9	2	5	1		

Continued on next page...

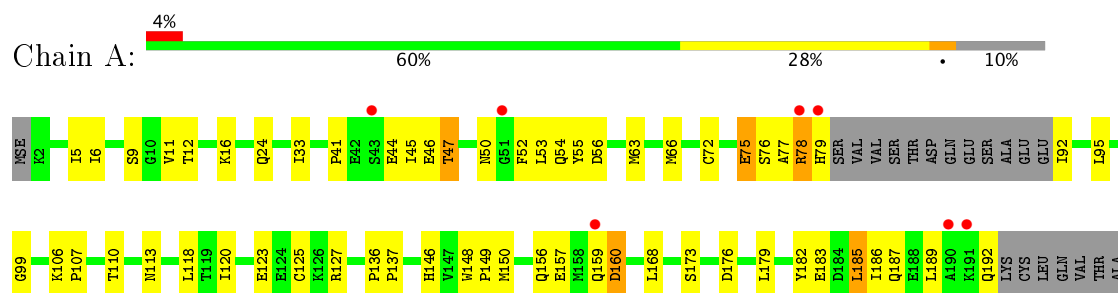
Continued from previous page...

Mol	Chain	Residues	Atoms					ZeroOcc	AltConf
3	H	1	Total	C	N	O	S	0	0
			17	9	2	5	1		
3	I	1	Total	C	N	O	S	0	0
			17	9	2	5	1		
3	J	1	Total	C	N	O	S	0	0
			17	9	2	5	1		
3	K	1	Total	C	N	O	S	0	0
			17	9	2	5	1		
3	L	1	Total	C	N	O	S	0	0
			17	9	2	5	1		
3	M	1	Total	C	N	O	S	0	0
			17	9	2	5	1		
3	N	1	Total	C	N	O	S	0	0
			17	9	2	5	1		
3	O	1	Total	C	N	O	S	0	0
			17	9	2	5	1		
3	P	1	Total	C	N	O	S	0	0
			17	9	2	5	1		

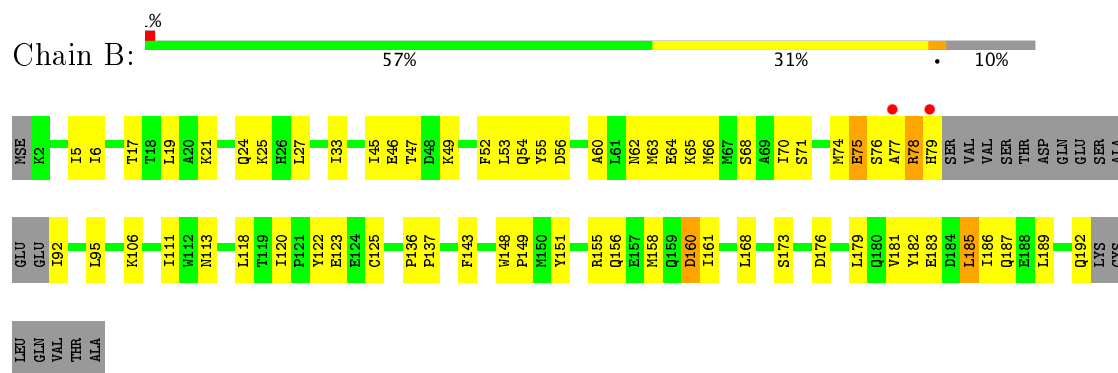
3 Residue-property plots

These plots are drawn for all protein, RNA and DNA chains in the entry. The first graphic for a chain summarises the proportions of the various outlier classes displayed in the second graphic. The second graphic shows the sequence view annotated by issues in geometry and electron density. Residues are color-coded according to the number of geometric quality criteria for which they contain at least one outlier: green = 0, yellow = 1, orange = 2 and red = 3 or more. A red dot above a residue indicates a poor fit to the electron density ($RSRZ > 2$). Stretches of 2 or more consecutive residues without any outlier are shown as a green connector. Residues present in the sample, but not in the model, are shown in grey.

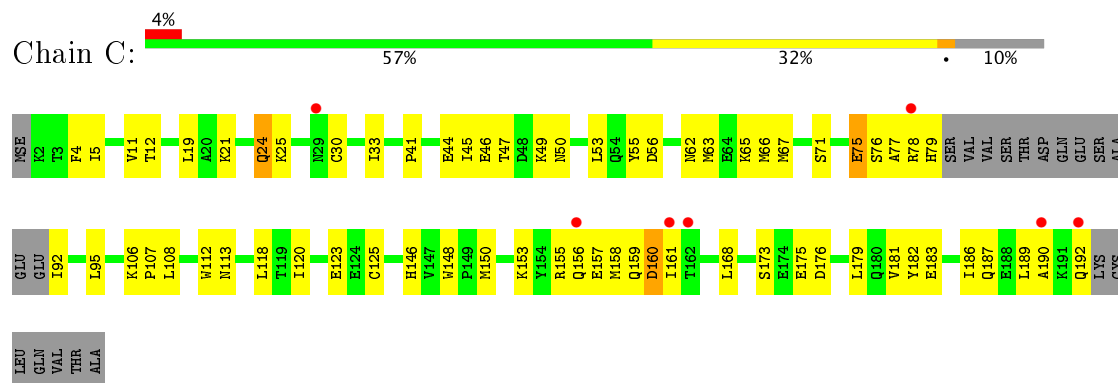
- Molecule 1: nicotinamide riboside kinase 1



- Molecule 1: nicotinamide riboside kinase 1



- Molecule 1: nicotinamide riboside kinase 1



- Molecule 1: nicotinamide riboside kinase 1

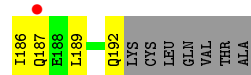
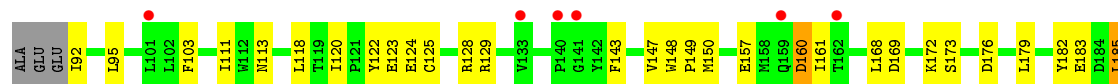




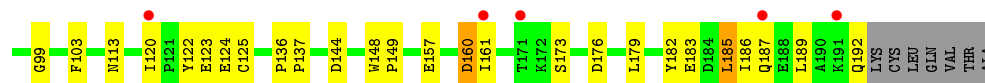
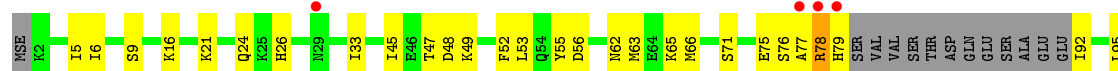
• Molecule 1: nicotinamide riboside kinase 1



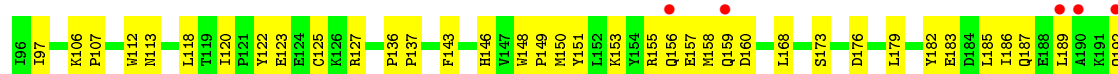
• Molecule 1: nicotinamide riboside kinase 1



• Molecule 1: nicotinamide riboside kinase 1

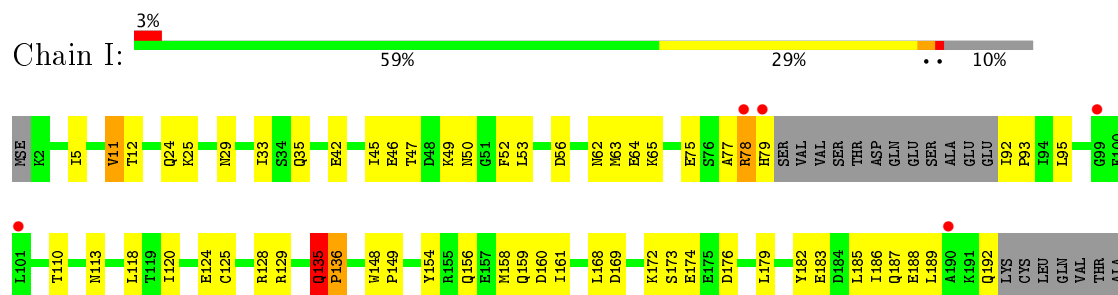


• Molecule 1: nicotinamide riboside kinase 1

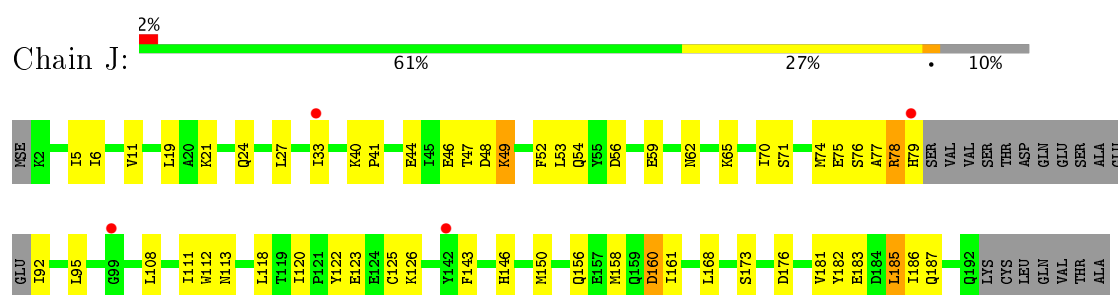


LYS
CYS
LEU
GLN
VAL
THR
ALA

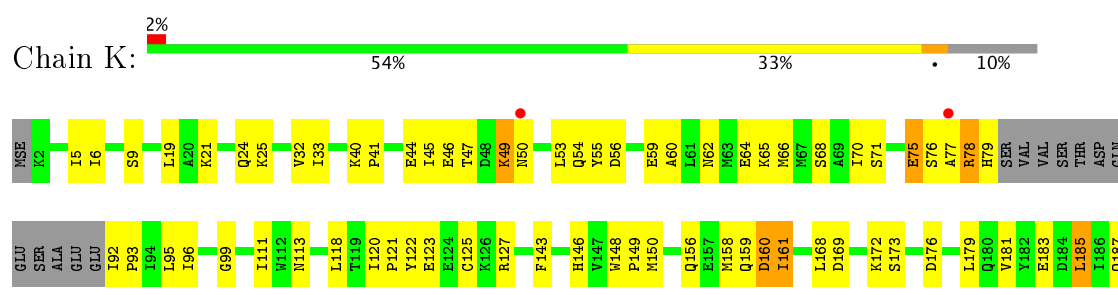
• Molecule 1: nicotinamide riboside kinase 1



• Molecule 1: nicotinamide riboside kinase 1

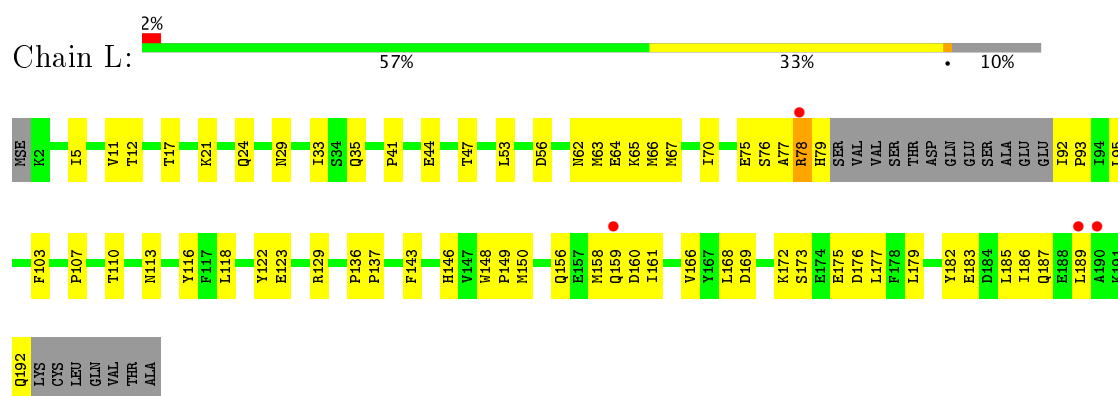


• Molecule 1: nicotinamide riboside kinase 1

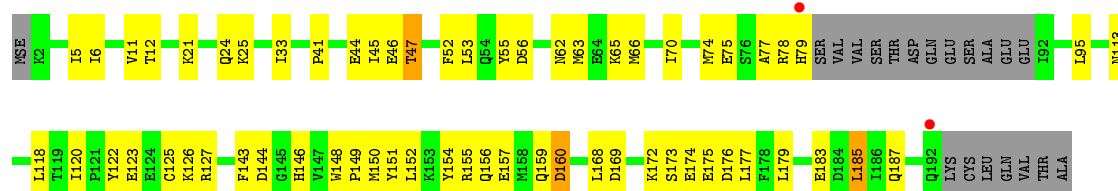


H188
L189
R190
R191
Q192
LYS
CYS
LEU
GLN
VAL
THR
ALA

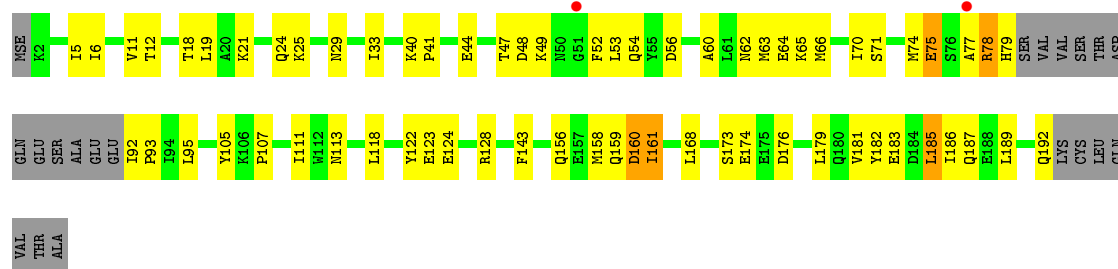
• Molecule 1: nicotinamide riboside kinase 1



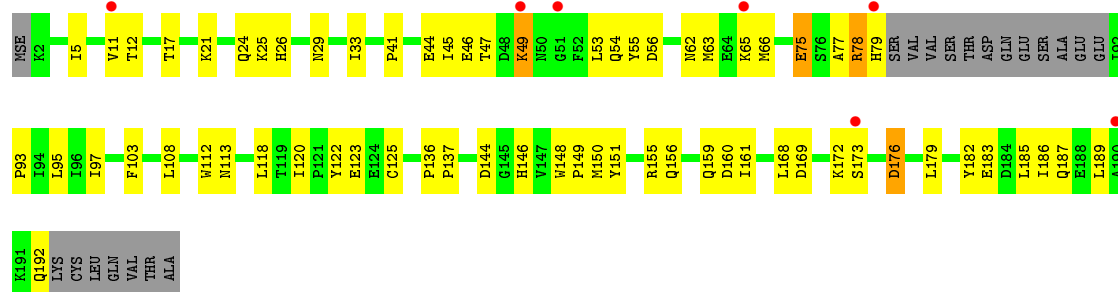
• Molecule 1: nicotinamide riboside kinase 1



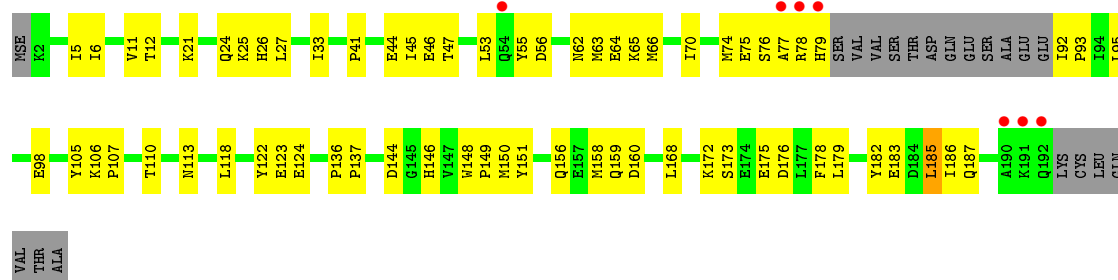
- Molecule 1: nicotinamide riboside kinase 1



- Molecule 1: nicotinamide riboside kinase 1



- Molecule 1: nicotinamide riboside kinase 1



4 Data and refinement statistics

Property	Value	Source
Space group	P 1 21 1	Depositor
Cell constants a, b, c, α , β , γ	145.71Å 99.96Å 145.59Å 90.00° 91.57° 90.00°	Depositor
Resolution (Å)	30.00 – 2.70 29.42 – 2.61	Depositor EDS
% Data completeness (in resolution range)	94.1 (30.00-2.70) 91.8 (29.42-2.61)	Depositor EDS
R_{merge}	0.10	Depositor
R_{sym}	0.10	Depositor
$\langle I/\sigma(I) \rangle$ ¹	1.66 (at 2.61Å)	Xtriage
Refinement program	CNS	Depositor
R, R_{free}	0.207 , 0.235 0.202 , 0.229	Depositor DCC
R_{free} test set	5216 reflections (4.92%)	DCC
Wilson B-factor (Å ²)	28.7	Xtriage
Anisotropy	0.431	Xtriage
Bulk solvent k_{sol} (e/Å ³), B_{sol} (Å ²)	0.29 , 12.5	EDS
L-test for twinning ²	$\langle L \rangle = 0.37$, $\langle L^2 \rangle = 0.19$	Xtriage
Estimated twinning fraction	0.196 for -l,k,h 0.199 for -h,-k,l 0.420 for l,-k,h	Xtriage
Reported twinning fraction	0.370 for l,-k,h	Depositor
Outliers	0 of 116523 reflections	Xtriage
F_o, F_c correlation	0.74	EDS
Total number of atoms	24416	wwPDB-VP
Average B, all atoms (Å ²)	21.0	wwPDB-VP

Xtriage's analysis on translational NCS is as follows: *The largest off-origin peak in the Patterson function is 9.41% of the height of the origin peak. No significant pseudotranslation is detected.*

¹Intensities estimated from amplitudes.

²Theoretical values of $\langle |L| \rangle$, $\langle L^2 \rangle$ for acentric reflections are 0.5, 0.333 respectively for untwinned datasets, and 0.375, 0.2 for perfectly twinned datasets.

5 Model quality

5.1 Standard geometry

Bond lengths and bond angles in the following residue types are not validated in this section: TIZ, ADP

The Z score for a bond length (or angle) is the number of standard deviations the observed value is removed from the expected value. A bond length (or angle) with $|Z| > 5$ is considered an outlier worth inspection. RMSZ is the root-mean-square of all Z scores of the bond lengths (or angles).

Mol	Chain	Bond lengths		Bond angles	
		RMSZ	# Z >5	RMSZ	# Z >5
1	A	0.50	0/1513	0.67	0/2037
1	B	0.53	0/1513	0.68	0/2037
1	C	0.52	0/1513	0.67	0/2037
1	D	0.51	0/1513	0.67	0/2037
1	E	0.53	0/1513	0.67	0/2037
1	F	0.51	0/1513	0.64	0/2037
1	G	0.53	0/1513	0.67	0/2037
1	H	0.53	0/1513	0.66	0/2037
1	I	0.55	0/1513	0.73	1/2037 (0.0%)
1	J	0.51	0/1513	0.66	0/2037
1	K	0.54	0/1513	0.69	0/2037
1	L	0.51	0/1513	0.68	0/2037
1	M	0.53	0/1513	0.67	0/2037
1	N	0.51	0/1513	0.68	0/2037
1	O	0.50	0/1513	0.66	0/2037
1	P	0.50	0/1513	0.67	0/2037
All	All	0.52	0/24208	0.67	1/32592 (0.0%)

Chiral center outliers are detected by calculating the chiral volume of a chiral center and verifying if the center is modelled as a planar moiety or with the opposite hand. A planarity outlier is detected by checking planarity of atoms in a peptide group, atoms in a mainchain group or atoms of a sidechain that are expected to be planar.

Mol	Chain	#Chirality outliers	#Planarity outliers
1	I	0	1

There are no bond length outliers.

All (1) bond angle outliers are listed below:

Mol	Chain	Res	Type	Atoms	Z	Observed(°)	Ideal(°)
1	I	135	GLN	C-N-CA	-5.94	97.07	122.00

There are no chirality outliers.

All (1) planarity outliers are listed below:

Mol	Chain	Res	Type	Group
1	I	135	GLN	Mainchain

5.2 Too-close contacts [i](#)

In the following table, the Non-H and H(model) columns list the number of non-hydrogen atoms and hydrogen atoms in the chain respectively. The H(added) column lists the number of hydrogen atoms added and optimized by MolProbity. The Clashes column lists the number of clashes within the asymmetric unit, whereas Symm-Clashes lists symmetry related clashes.

Mol	Chain	Non-H	H(model)	H(added)	Clashes	Symm-Clashes
1	A	1482	0	1449	61	0
1	B	1482	0	1449	58	0
1	C	1482	0	1449	57	0
1	D	1482	0	1449	60	0
1	E	1482	0	1449	46	0
1	F	1482	0	1449	55	0
1	G	1482	0	1449	41	0
1	H	1482	0	1449	50	0
1	I	1482	0	1449	69	0
1	J	1482	0	1449	56	0
1	K	1482	0	1449	62	0
1	L	1482	0	1449	52	0
1	M	1482	0	1449	48	0
1	N	1482	0	1449	56	0
1	O	1482	0	1449	49	0
1	P	1482	0	1449	55	0
2	A	27	0	12	1	0
2	B	27	0	12	0	0
2	C	27	0	12	1	0
2	D	27	0	12	1	0
2	E	27	0	12	1	0
2	F	27	0	12	1	0
2	G	27	0	12	0	0
2	H	27	0	12	1	0
2	I	27	0	12	1	0
2	J	27	0	12	0	0

Continued on next page...

Continued from previous page...

Mol	Chain	Non-H	H(model)	H(added)	Clashes	Symm-Clashes
2	K	27	0	12	0	0
2	L	27	0	12	0	0
2	M	27	0	12	0	0
2	N	27	0	12	0	0
2	O	27	0	12	0	0
2	P	27	0	12	0	0
3	A	17	0	12	0	0
3	B	17	0	12	0	0
3	C	17	0	12	0	0
3	D	17	0	12	0	0
3	E	17	0	12	0	0
3	F	17	0	12	1	0
3	G	17	0	12	0	0
3	H	17	0	12	0	0
3	I	17	0	12	1	0
3	J	17	0	12	0	0
3	K	17	0	12	0	0
3	L	17	0	12	0	0
3	M	17	0	12	0	0
3	N	17	0	12	0	0
3	O	17	0	12	0	0
3	P	17	0	12	0	0
All	All	24416	0	23568	819	0

The all-atom clashscore is defined as the number of clashes found per 1000 atoms (including hydrogen atoms). The all-atom clashscore for this structure is 17.

All (819) close contacts within the same asymmetric unit are listed below, sorted by their clash magnitude.

Atom-1	Atom-2	Interatomic distance (Å)	Clash overlap (Å)
1:D:110:THR:HG21	1:F:111:ILE:HD11	1.21	1.10
1:I:78:ARG:CZ	1:J:160:ASP:HB3	1.81	1.09
1:A:110:THR:HG21	1:B:111:ILE:HD11	1.28	1.08
1:P:47:THR:HG22	1:P:53:LEU:HD23	1.36	1.07
1:G:5:ILE:H	1:G:113:ASN:HD22	1.03	1.00
1:E:5:ILE:H	1:E:113:ASN:HD22	1.04	0.98
1:A:5:ILE:H	1:A:113:ASN:HD22	1.06	0.98
1:D:78:ARG:CZ	1:F:160:ASP:HB3	1.93	0.98
1:K:5:ILE:H	1:K:113:ASN:ND2	1.61	0.98
1:A:50:ASN:HD22	1:C:49:LYS:HE2	1.30	0.97
1:K:5:ILE:N	1:K:113:ASN:HD22	1.62	0.96

Continued on next page...

Continued from previous page...

Atom-1	Atom-2	Interatomic distance (Å)	Clash overlap (Å)
1:J:173:SER:HB3	1:J:176:ASP:HB2	1.49	0.95
1:O:5:ILE:H	1:O:113:ASN:HD22	0.97	0.94
1:C:5:ILE:N	1:C:113:ASN:HD22	1.64	0.93
1:P:5:ILE:H	1:P:113:ASN:ND2	1.66	0.93
1:B:5:ILE:H	1:B:113:ASN:HD22	1.08	0.92
1:L:5:ILE:H	1:L:113:ASN:ND2	1.68	0.92
1:L:5:ILE:H	1:L:113:ASN:HD22	0.93	0.92
1:C:5:ILE:H	1:C:113:ASN:ND2	1.66	0.92
1:N:5:ILE:H	1:N:113:ASN:HD22	0.93	0.92
1:I:64:GLU:OE2	1:J:40:LYS:NZ	2.04	0.91
1:I:5:ILE:H	1:I:113:ASN:HD22	0.93	0.91
1:N:47:THR:HG22	1:N:53:LEU:HD23	1.52	0.91
1:D:5:ILE:H	1:D:113:ASN:HD22	0.94	0.91
1:A:47:THR:HG22	1:A:53:LEU:HD23	1.51	0.90
1:L:110:THR:HG21	1:N:111:ILE:HD11	1.52	0.90
1:H:5:ILE:H	1:H:113:ASN:HD22	0.97	0.90
1:M:5:ILE:H	1:M:113:ASN:ND2	1.69	0.90
1:F:5:ILE:H	1:F:113:ASN:HD22	0.92	0.89
1:M:5:ILE:H	1:M:113:ASN:HD22	0.96	0.88
1:P:5:ILE:N	1:P:113:ASN:HD22	1.70	0.88
1:I:135:GLN:O	1:I:136:PRO:C	2.06	0.87
1:J:5:ILE:H	1:J:113:ASN:ND2	1.69	0.87
1:L:173:SER:HB3	1:L:176:ASP:HB2	1.57	0.87
1:D:5:ILE:H	1:D:113:ASN:ND2	1.73	0.87
1:K:111:ILE:HD11	1:P:110:THR:HG21	1.57	0.87
1:L:78:ARG:CZ	1:N:160:ASP:HB3	2.05	0.86
1:A:173:SER:HB3	1:A:176:ASP:HB2	1.58	0.86
1:L:64:GLU:OE2	1:N:40:LYS:NZ	2.09	0.86
1:J:5:ILE:H	1:J:113:ASN:HD22	0.87	0.85
1:F:5:ILE:N	1:F:113:ASN:HD22	1.73	0.85
1:G:47:THR:HG22	1:G:53:LEU:HD23	1.58	0.85
1:F:5:ILE:H	1:F:113:ASN:ND2	1.75	0.85
1:G:173:SER:HB3	1:G:176:ASP:HB2	1.59	0.85
1:J:5:ILE:N	1:J:113:ASN:HD22	1.73	0.84
1:N:5:ILE:H	1:N:113:ASN:ND2	1.75	0.84
1:H:5:ILE:H	1:H:113:ASN:ND2	1.75	0.84
1:N:173:SER:HB3	1:N:176:ASP:HB2	1.59	0.83
1:N:5:ILE:N	1:N:113:ASN:HD22	1.76	0.83
1:P:5:ILE:H	1:P:113:ASN:HD22	0.85	0.83
1:I:110:THR:HG21	1:J:111:ILE:HD11	1.59	0.83
1:E:5:ILE:H	1:E:113:ASN:ND2	1.77	0.82

Continued on next page...

Continued from previous page...

Atom-1	Atom-2	Interatomic distance (Å)	Clash overlap (Å)
1:L:5:ILE:N	1:L:113:ASN:HD22	1.76	0.81
1:F:47:THR:HG22	1:F:53:LEU:HD23	1.61	0.81
1:O:183:GLU:HB3	1:O:187:GLN:NE2	1.96	0.80
1:O:5:ILE:H	1:O:113:ASN:ND2	1.77	0.80
1:J:47:THR:HG22	1:J:53:LEU:HD23	1.62	0.80
1:A:52:PHE:HD1	1:C:49:LYS:HE3	1.46	0.80
1:N:33:ILE:HG13	1:N:95:LEU:HD11	1.62	0.80
1:E:173:SER:HB3	1:E:176:ASP:HB2	1.63	0.79
1:I:5:ILE:N	1:I:113:ASN:HD22	1.76	0.79
1:M:156:GLN:HG3	1:M:159:GLN:NE2	1.98	0.79
1:B:5:ILE:H	1:B:113:ASN:ND2	1.81	0.79
1:K:179:LEU:O	1:K:183:GLU:HG3	1.82	0.78
1:O:5:ILE:N	1:O:113:ASN:HD22	1.79	0.78
1:I:47:THR:HG22	1:I:53:LEU:HD23	1.64	0.77
1:I:5:ILE:H	1:I:113:ASN:ND2	1.77	0.77
1:F:173:SER:HB3	1:F:176:ASP:HB2	1.66	0.77
1:M:173:SER:HB3	1:M:176:ASP:HB2	1.66	0.77
1:K:33:ILE:HG13	1:K:95:LEU:HD11	1.66	0.77
1:D:5:ILE:N	1:D:113:ASN:HD22	1.79	0.76
1:M:5:ILE:N	1:M:113:ASN:HD22	1.79	0.76
1:D:173:SER:HB3	1:D:176:ASP:HB2	1.67	0.76
1:N:156:GLN:HG3	1:N:159:GLN:NE2	2.01	0.76
1:B:173:SER:HB3	1:B:176:ASP:HB2	1.68	0.75
1:I:183:GLU:HB3	1:I:187:GLN:NE2	2.01	0.75
1:H:33:ILE:HG13	1:H:95:LEU:HD11	1.68	0.75
1:C:47:THR:HG22	1:C:53:LEU:HD23	1.69	0.74
1:I:135:GLN:O	1:I:136:PRO:O	2.04	0.74
1:L:33:ILE:HG13	1:L:95:LEU:HD11	1.70	0.74
1:A:156:GLN:HG3	1:A:159:GLN:NE2	2.03	0.73
1:H:173:SER:HB3	1:H:176:ASP:HB2	1.68	0.73
1:H:5:ILE:N	1:H:113:ASN:HD22	1.81	0.73
1:P:173:SER:HB3	1:P:176:ASP:HB2	1.71	0.73
1:J:33:ILE:HG13	1:J:95:LEU:HD11	1.69	0.73
1:K:47:THR:HG22	1:K:53:LEU:HD23	1.70	0.73
1:C:5:ILE:H	1:C:113:ASN:HD22	0.82	0.72
1:A:50:ASN:ND2	1:C:49:LYS:HE2	2.04	0.72
1:C:183:GLU:HB3	1:C:187:GLN:NE2	2.04	0.72
1:B:47:THR:HG22	1:B:53:LEU:HD23	1.72	0.72
1:G:33:ILE:HG13	1:G:95:LEU:HD11	1.69	0.72
1:M:118:LEU:HD23	1:M:168:LEU:HB2	1.70	0.72
1:D:78:ARG:NH2	1:F:160:ASP:HB3	2.05	0.72

Continued on next page...

Continued from previous page...

Atom-1	Atom-2	Interatomic distance (Å)	Clash overlap (Å)
1:D:156:GLN:HG3	1:D:159:GLN:NE2	2.06	0.71
1:B:179:LEU:O	1:B:183:GLU:HG3	1.91	0.71
1:P:47:THR:HG22	1:P:53:LEU:CD2	2.18	0.71
1:A:110:THR:HG21	1:B:111:ILE:CD1	2.16	0.70
1:D:118:LEU:HD23	1:D:168:LEU:HB2	1.74	0.69
1:C:173:SER:HB3	1:C:176:ASP:HB2	1.74	0.69
1:D:33:ILE:HG13	1:D:95:LEU:HD11	1.75	0.69
1:H:21:LYS:O	1:H:25:LYS:HG3	1.90	0.69
1:D:110:THR:CG2	1:F:111:ILE:HD11	2.12	0.69
1:A:118:LEU:HD23	1:A:168:LEU:HB2	1.75	0.69
1:G:5:ILE:H	1:G:113:ASN:ND2	1.85	0.68
1:E:5:ILE:O	1:E:113:ASN:HB2	1.92	0.68
1:L:183:GLU:HB3	1:L:187:GLN:NE2	2.08	0.68
1:H:156:GLN:HG3	1:H:159:GLN:NE2	2.08	0.68
1:I:33:ILE:HG13	1:I:95:LEU:HD11	1.76	0.68
1:O:173:SER:HB3	1:O:176:ASP:HB2	1.75	0.68
1:N:62:ASN:HB3	1:N:65:LYS:HG3	1.75	0.67
1:O:156:GLN:HG3	1:O:159:GLN:NE2	2.09	0.67
1:C:123:GLU:CD	1:C:123:GLU:H	1.95	0.67
1:E:33:ILE:HG13	1:E:95:LEU:HD11	1.77	0.67
1:B:33:ILE:HG13	1:B:95:LEU:HD11	1.77	0.67
1:P:156:GLN:HG3	1:P:159:GLN:NE2	2.10	0.67
1:H:189:LEU:HA	1:H:192:GLN:HG2	1.77	0.67
1:K:173:SER:HB3	1:K:176:ASP:HB2	1.76	0.67
1:A:179:LEU:O	1:A:183:GLU:HG3	1.95	0.66
1:E:47:THR:HG22	1:E:53:LEU:HD23	1.77	0.66
1:H:183:GLU:HB3	1:H:187:GLN:NE2	2.10	0.66
1:P:33:ILE:HG13	1:P:95:LEU:HD11	1.76	0.66
1:A:50:ASN:ND2	1:C:49:LYS:HG2	2.11	0.66
1:A:52:PHE:CD1	1:C:49:LYS:HE3	2.29	0.66
1:I:173:SER:HB3	1:I:176:ASP:HB2	1.76	0.66
1:K:59:GLU:HG3	1:P:64:GLU:OE1	1.96	0.65
1:I:149:PRO:HB3	1:K:50:ASN:CG	2.16	0.65
1:A:156:GLN:HG3	1:A:159:GLN:HE22	1.62	0.65
1:K:183:GLU:HB3	1:K:187:GLN:NE2	2.11	0.65
1:N:47:THR:HG22	1:N:53:LEU:CD2	2.27	0.64
1:F:179:LEU:O	1:F:183:GLU:HG3	1.97	0.64
1:A:33:ILE:HG13	1:A:95:LEU:HD11	1.78	0.64
1:B:183:GLU:HB3	1:B:187:GLN:NE2	2.12	0.64
1:K:77:ALA:C	1:K:79:HIS:H	2.01	0.64
1:G:183:GLU:HB3	1:G:187:GLN:NE2	2.12	0.64

Continued on next page...

Continued from previous page...

Atom-1	Atom-2	Interatomic distance (Å)	Clash overlap (Å)
1:N:123:GLU:H	1:N:123:GLU:CD	2.01	0.64
1:A:5:ILE:H	1:A:113:ASN:ND2	1.88	0.64
1:D:47:THR:HG22	1:D:53:LEU:HD23	1.79	0.64
1:J:5:ILE:O	1:J:113:ASN:HB2	1.98	0.64
1:I:77:ALA:C	1:I:79:HIS:H	2.00	0.64
1:O:62:ASN:HB3	1:O:65:LYS:HG3	1.79	0.64
1:I:118:LEU:HD23	1:I:168:LEU:HB2	1.79	0.63
1:J:62:ASN:HB3	1:J:65:LYS:HG3	1.80	0.63
1:L:47:THR:HG22	1:L:53:LEU:HD23	1.79	0.63
1:L:107:PRO:HG3	1:N:64:GLU:HA	1.79	0.63
1:K:78:ARG:O	1:K:79:HIS:ND1	2.31	0.63
1:B:77:ALA:C	1:B:79:HIS:H	2.02	0.63
1:M:47:THR:HG22	1:M:53:LEU:HD23	1.81	0.62
1:I:50:ASN:HD22	1:K:49:LYS:HE2	1.65	0.62
1:I:189:LEU:HA	1:I:192:GLN:HG2	1.81	0.62
1:C:33:ILE:HG13	1:C:95:LEU:HD11	1.80	0.62
1:L:156:GLN:HG3	1:L:159:GLN:NE2	2.15	0.62
1:L:77:ALA:C	1:L:79:HIS:H	2.01	0.62
1:D:77:ALA:C	1:D:79:HIS:H	2.02	0.62
1:E:123:GLU:CD	1:E:123:GLU:H	2.03	0.62
1:A:77:ALA:C	1:A:79:HIS:H	2.02	0.62
1:F:183:GLU:HB3	1:F:187:GLN:NE2	2.13	0.62
1:G:77:ALA:C	1:G:79:HIS:H	2.03	0.62
1:C:179:LEU:O	1:C:183:GLU:HG3	2.00	0.61
1:D:5:ILE:O	1:D:113:ASN:HB2	2.00	0.61
1:L:62:ASN:HB3	1:L:65:LYS:HG3	1.82	0.61
1:D:179:LEU:O	1:D:183:GLU:HG3	2.00	0.61
1:L:182:TYR:O	1:L:186:ILE:HG13	2.00	0.61
1:F:189:LEU:HA	1:F:192:GLN:HG2	1.83	0.61
1:J:6:ILE:HD13	1:J:185:LEU:HD21	1.81	0.61
1:H:29:ASN:HD21	1:H:93:PRO:HG3	1.64	0.61
1:K:62:ASN:HB3	1:K:65:LYS:HG3	1.81	0.61
1:M:179:LEU:O	1:M:183:GLU:HG3	2.01	0.61
1:K:40:LYS:NZ	1:P:64:GLU:OE2	2.34	0.61
1:C:21:LYS:O	1:C:25:LYS:HG3	2.01	0.61
1:I:135:GLN:HB3	1:I:136:PRO:HD2	1.83	0.61
1:J:77:ALA:C	1:J:79:HIS:H	2.04	0.61
1:J:78:ARG:O	1:J:79:HIS:ND1	2.34	0.60
1:M:146:HIS:O	1:M:150:MSE:HG2	2.02	0.60
1:O:183:GLU:HB3	1:O:187:GLN:HE21	1.64	0.60
1:F:33:ILE:HG13	1:F:95:LEU:HD11	1.82	0.60

Continued on next page...

Continued from previous page...

Atom-1	Atom-2	Interatomic distance (Å)	Clash overlap (Å)
1:J:173:SER:HB3	1:J:176:ASP:CB	2.28	0.60
1:M:183:GLU:HB3	1:M:187:GLN:NE2	2.15	0.60
1:I:78:ARG:NH1	1:J:160:ASP:HB3	2.16	0.60
1:M:33:ILE:HG13	1:M:95:LEU:HD11	1.83	0.60
1:O:63:MSE:HE1	1:O:66:MSE:HE1	1.84	0.60
1:I:135:GLN:HA	1:I:135:GLN:NE2	2.16	0.60
1:E:77:ALA:C	1:E:79:HIS:H	2.05	0.60
1:A:47:THR:HA	1:A:52:PHE:O	2.02	0.60
1:A:63:MSE:HE1	1:A:66:MSE:HE1	1.83	0.60
1:O:47:THR:HG22	1:O:53:LEU:HD23	1.82	0.60
1:E:179:LEU:O	1:E:183:GLU:HG3	2.01	0.59
1:H:5:ILE:O	1:H:113:ASN:HB2	2.02	0.59
1:E:173:SER:HB3	1:E:176:ASP:CB	2.32	0.59
1:H:47:THR:HG22	1:H:53:LEU:HD23	1.85	0.59
1:L:29:ASN:HD21	1:L:93:PRO:HG3	1.67	0.59
1:M:63:MSE:HE1	1:M:66:MSE:HE1	1.85	0.59
1:F:71:SER:O	1:F:75:GLU:HG3	2.02	0.59
1:O:122:TYR:OH	1:O:144:ASP:OD1	2.17	0.59
1:O:33:ILE:HG13	1:O:95:LEU:HD11	1.83	0.59
1:A:148:TRP:HB3	1:A:149:PRO:HD3	1.84	0.59
1:F:77:ALA:C	1:F:79:HIS:H	2.06	0.59
1:K:64:GLU:HA	1:P:107:PRO:HG3	1.84	0.59
1:I:11:VAL:HG22	1:I:12:THR:N	2.18	0.58
1:L:118:LEU:HD23	1:L:168:LEU:HB2	1.84	0.58
1:L:173:SER:HB3	1:L:176:ASP:CB	2.31	0.58
1:O:77:ALA:C	1:O:79:HIS:H	2.07	0.58
1:L:148:TRP:HB3	1:L:149:PRO:HD3	1.84	0.58
1:A:47:THR:HG22	1:A:53:LEU:CD2	2.27	0.58
1:H:63:MSE:HE1	1:H:66:MSE:HE1	1.85	0.58
1:O:78:ARG:O	1:O:79:HIS:ND1	2.37	0.57
1:P:41:PRO:HG2	1:P:44:GLU:HG3	1.84	0.57
1:B:5:ILE:N	1:B:113:ASN:HD22	1.90	0.57
1:D:148:TRP:HB3	1:D:149:PRO:HD3	1.86	0.57
1:I:35:GLN:HE21	1:I:63:MSE:SE	2.38	0.57
1:O:118:LEU:HD23	1:O:168:LEU:HB2	1.87	0.57
1:G:179:LEU:HD13	1:O:26:HIS:CD2	2.39	0.57
1:A:5:ILE:N	1:A:113:ASN:HD22	1.89	0.57
1:C:62:ASN:HB3	1:C:65:LYS:HG3	1.87	0.57
1:H:123:GLU:H	1:H:123:GLU:CD	2.07	0.57
1:I:77:ALA:O	1:I:79:HIS:N	2.38	0.57
1:N:77:ALA:C	1:N:79:HIS:H	2.07	0.57

Continued on next page...

Continued from previous page...

Atom-1	Atom-2	Interatomic distance (Å)	Clash overlap (Å)
1:K:68:SER:HB2	1:P:106:LYS:HG3	1.85	0.57
1:C:41:PRO:HG2	1:C:44:GLU:HG3	1.86	0.57
1:M:62:ASN:HB3	1:M:65:LYS:HG3	1.87	0.57
1:E:118:LEU:HD23	1:E:168:LEU:HB2	1.85	0.57
1:A:173:SER:HB3	1:A:176:ASP:CB	2.33	0.56
1:A:92:ILE:O	1:A:92:ILE:HG23	2.05	0.56
1:C:5:ILE:O	1:C:113:ASN:HB2	2.05	0.56
1:J:123:GLU:H	1:J:123:GLU:CD	2.08	0.56
1:K:41:PRO:HD2	1:K:44:GLU:OE2	2.05	0.56
1:N:183:GLU:HB3	1:N:187:GLN:NE2	2.20	0.56
1:B:62:ASN:HB3	1:B:65:LYS:HG3	1.88	0.56
1:E:62:ASN:HB3	1:E:65:LYS:HG3	1.88	0.56
1:I:78:ARG:CZ	1:J:160:ASP:CB	2.72	0.56
1:N:48:ASP:OD2	1:N:52:PHE:HB2	2.06	0.56
1:N:118:LEU:HD23	1:N:168:LEU:HB2	1.88	0.56
1:K:156:GLN:HG3	1:K:159:GLN:NE2	2.20	0.56
1:N:6:ILE:HD13	1:N:185:LEU:HD21	1.86	0.56
2:A:301:ADP:H3'	1:E:21:LYS:HD2	1.88	0.56
1:K:59:GLU:HA	1:P:64:GLU:OE1	2.05	0.56
1:E:183:GLU:HB3	1:E:187:GLN:NE2	2.20	0.56
1:L:179:LEU:O	1:L:183:GLU:HG3	2.05	0.56
1:B:70:ILE:O	1:B:74:MSE:HG3	2.06	0.56
1:D:78:ARG:NH2	1:F:160:ASP:HA	2.21	0.56
1:D:75:GLU:O	1:D:78:ARG:NH1	2.39	0.56
1:H:77:ALA:C	1:H:79:HIS:H	2.07	0.56
1:J:182:TYR:O	1:J:186:ILE:HG13	2.07	0.56
1:P:77:ALA:C	1:P:79:HIS:H	2.09	0.56
1:C:118:LEU:HD23	1:C:168:LEU:HB2	1.88	0.55
1:C:24:GLN:HA	1:C:30:CYS:SG	2.47	0.55
1:F:157:GLU:O	1:F:160:ASP:OD2	2.23	0.55
1:M:41:PRO:HG2	1:M:44:GLU:HG3	1.89	0.55
1:H:146:HIS:O	1:H:150:MSE:HG2	2.07	0.55
1:N:33:ILE:CG1	1:N:95:LEU:HD11	2.36	0.55
1:B:75:GLU:OE2	1:B:76:SER:HB3	2.05	0.55
1:N:33:ILE:HD12	1:N:95:LEU:HD21	1.88	0.55
1:M:6:ILE:HD13	1:M:185:LEU:HD21	1.89	0.55
1:P:182:TYR:O	1:P:186:ILE:HG13	2.07	0.55
1:G:182:TYR:O	1:G:186:ILE:HG13	2.07	0.55
1:H:75:GLU:OE2	1:H:76:SER:HB3	2.06	0.55
1:A:107:PRO:HG3	1:B:64:GLU:HA	1.89	0.55
1:M:156:GLN:HG3	1:M:159:GLN:HE22	1.72	0.55

Continued on next page...

Continued from previous page...

Atom-1	Atom-2	Interatomic distance (Å)	Clash overlap (Å)
1:H:182:TYR:O	1:H:186:ILE:HG13	2.07	0.55
1:I:120:ILE:HG23	1:I:125:CYS:HB2	1.89	0.55
1:D:110:THR:HG21	1:F:111:ILE:CD1	2.15	0.55
1:A:50:ASN:HD21	1:C:49:LYS:HG2	1.71	0.54
1:C:77:ALA:C	1:C:79:HIS:H	2.10	0.54
1:K:33:ILE:CG1	1:K:95:LEU:HD11	2.35	0.54
1:G:148:TRP:HB3	1:G:149:PRO:HD3	1.89	0.54
1:L:35:GLN:HE21	1:L:63:MSE:SE	2.41	0.54
1:D:78:ARG:NH1	1:F:160:ASP:HB3	2.20	0.54
1:F:182:TYR:O	1:F:186:ILE:HG13	2.07	0.54
1:M:148:TRP:HB3	1:M:149:PRO:HD3	1.89	0.54
1:A:78:ARG:CZ	1:B:160:ASP:HB3	2.38	0.54
1:B:63:MSE:HE1	1:B:66:MSE:HE1	1.89	0.54
1:A:110:THR:CG2	1:B:111:ILE:HD11	2.20	0.54
1:I:64:GLU:OE1	1:J:59:GLU:HA	2.08	0.54
1:D:62:ASN:HB3	1:D:65:LYS:HG3	1.89	0.54
1:H:183:GLU:HB3	1:H:187:GLN:HE21	1.73	0.54
1:P:124:GLU:OE1	1:P:124:GLU:HA	2.08	0.54
1:P:183:GLU:HB3	1:P:187:GLN:NE2	2.23	0.54
1:C:189:LEU:HA	1:C:192:GLN:HG2	1.90	0.53
1:L:78:ARG:NH2	1:L:79:HIS:HE1	2.06	0.53
1:D:123:GLU:H	1:D:123:GLU:CD	2.11	0.53
1:M:5:ILE:O	1:M:113:ASN:HB2	2.08	0.53
1:G:179:LEU:O	1:G:183:GLU:HG3	2.07	0.53
1:B:182:TYR:O	1:B:186:ILE:HG13	2.08	0.53
1:E:11:VAL:HG22	1:E:12:THR:N	2.23	0.53
1:G:123:GLU:H	1:G:123:GLU:CD	2.11	0.53
1:I:183:GLU:HB3	1:I:187:GLN:HE21	1.73	0.53
1:M:123:GLU:CD	1:M:123:GLU:H	2.10	0.53
1:E:5:ILE:N	1:E:113:ASN:HD22	1.88	0.53
1:J:70:ILE:O	1:J:74:MSE:HG3	2.08	0.53
1:P:122:TYR:OH	1:P:144:ASP:OD1	2.23	0.53
1:K:5:ILE:H	1:K:113:ASN:HD22	0.78	0.53
1:N:179:LEU:O	1:N:183:GLU:HG3	2.08	0.53
1:K:118:LEU:HD23	1:K:168:LEU:HB2	1.91	0.53
1:L:78:ARG:NH2	1:L:79:HIS:CE1	2.77	0.53
1:G:120:ILE:HG23	1:G:125:CYS:HB2	1.91	0.52
1:O:189:LEU:HA	1:O:192:GLN:HG2	1.90	0.52
1:B:173:SER:HB3	1:B:176:ASP:CB	2.38	0.52
1:J:183:GLU:HB3	1:J:187:GLN:NE2	2.24	0.52
1:F:189:LEU:HA	1:F:192:GLN:CG	2.38	0.52

Continued on next page...

Continued from previous page...

Atom-1	Atom-2	Interatomic distance (Å)	Clash overlap (Å)
1:F:62:ASN:HB3	1:F:65:LYS:HG3	1.92	0.52
1:I:78:ARG:NE	1:J:160:ASP:HB3	2.24	0.52
1:P:70:ILE:O	1:P:74:MSE:HG3	2.08	0.52
1:L:29:ASN:ND2	1:L:93:PRO:HA	2.24	0.52
1:I:179:LEU:O	1:I:183:GLU:HG3	2.10	0.52
1:K:169:ASP:HB3	1:K:172:LYS:HG3	1.91	0.52
1:K:66:MSE:O	1:K:70:ILE:HG13	2.09	0.52
1:P:173:SER:HB3	1:P:176:ASP:CB	2.40	0.52
1:C:11:VAL:HG22	1:C:12:THR:N	2.24	0.52
1:K:64:GLU:HA	1:P:107:PRO:CG	2.40	0.52
1:C:182:TYR:O	1:C:186:ILE:HG13	2.10	0.52
1:H:63:MSE:HE1	1:H:66:MSE:CE	2.40	0.52
1:H:66:MSE:O	1:H:70:ILE:HG13	2.09	0.51
1:J:47:THR:HG22	1:J:53:LEU:CD2	2.37	0.51
1:N:182:TYR:O	1:N:186:ILE:HG13	2.10	0.51
1:P:62:ASN:HB3	1:P:65:LYS:HG3	1.92	0.51
1:G:173:SER:HB3	1:G:176:ASP:CB	2.37	0.51
1:A:75:GLU:OE2	1:A:76:SER:N	2.44	0.51
1:G:6:ILE:HD13	1:G:185:LEU:HD21	1.92	0.51
1:J:120:ILE:HG23	1:J:125:CYS:HB2	1.93	0.51
1:J:33:ILE:CG1	1:J:95:LEU:HD11	2.38	0.51
1:A:41:PRO:HG2	1:A:44:GLU:HG3	1.92	0.51
1:B:158:MSE:HE3	1:B:161:ILE:CD1	2.40	0.51
1:L:5:ILE:O	1:L:113:ASN:HB2	2.10	0.51
1:N:63:MSE:SE	1:N:66:MSE:HE2	2.61	0.51
1:B:120:ILE:HG23	1:B:125:CYS:HB2	1.92	0.51
1:E:63:MSE:HE1	1:E:66:MSE:HE1	1.93	0.51
1:I:62:ASN:O	1:I:65:LYS:HB2	2.11	0.51
1:M:127:ARG:HH11	1:M:127:ARG:HG2	1.74	0.51
1:I:78:ARG:NH2	1:I:79:HIS:CE1	2.78	0.51
1:P:123:GLU:H	1:P:123:GLU:CD	2.14	0.51
1:H:29:ASN:ND2	1:H:93:PRO:HA	2.25	0.51
1:I:78:ARG:NH2	1:I:79:HIS:HE1	2.07	0.51
1:K:148:TRP:HB3	1:K:149:PRO:HD3	1.92	0.51
1:K:189:LEU:HA	1:K:192:GLN:HG2	1.92	0.51
1:L:189:LEU:HA	1:L:192:GLN:HG2	1.92	0.51
1:L:66:MSE:O	1:L:70:ILE:HG13	2.11	0.51
1:M:173:SER:HB3	1:M:176:ASP:CB	2.40	0.51
1:M:77:ALA:C	1:M:79:HIS:H	2.14	0.51
1:O:21:LYS:O	1:O:25:LYS:HG3	2.10	0.51
1:J:46:GLU:O	1:J:54:GLN:HG2	2.11	0.51

Continued on next page...

Continued from previous page...

Atom-1	Atom-2	Interatomic distance (Å)	Clash overlap (Å)
1:K:41:PRO:HB3	1:N:41:PRO:HB3	1.93	0.51
1:I:50:ASN:ND2	1:K:49:LYS:HE2	2.25	0.50
1:N:63:MSE:HE1	1:N:66:MSE:HE1	1.92	0.50
1:K:75:GLU:O	1:K:78:ARG:NH1	2.44	0.50
1:N:21:LYS:O	1:N:25:LYS:HG3	2.11	0.50
1:P:63:MSE:HB3	1:P:105:TYR:CZ	2.46	0.50
1:P:6:ILE:HD13	1:P:185:LEU:HD21	1.92	0.50
1:E:150:MSE:HE2	1:E:150:MSE:HA	1.93	0.50
1:F:122:TYR:CE1	1:F:143:PHE:HE2	2.29	0.50
1:J:156:GLN:C	1:J:158:MSE:H	2.14	0.50
1:L:33:ILE:CG1	1:L:95:LEU:HD11	2.40	0.50
1:M:127:ARG:NH1	1:M:127:ARG:HG2	2.25	0.50
1:B:17:THR:O	1:B:21:LYS:HG2	2.12	0.50
1:H:33:ILE:CG1	1:H:95:LEU:HD11	2.40	0.50
1:I:148:TRP:HB3	1:I:149:PRO:HD3	1.93	0.50
1:O:45:ILE:HG13	1:O:55:TYR:CZ	2.46	0.50
1:D:182:TYR:O	1:D:186:ILE:HG13	2.11	0.50
1:N:105:TYR:CD2	1:N:107:PRO:HD2	2.47	0.50
1:N:173:SER:HB3	1:N:176:ASP:CB	2.37	0.50
1:A:45:ILE:HG13	1:A:55:TYR:CZ	2.47	0.50
1:I:11:VAL:HG22	1:I:12:THR:H	1.77	0.50
1:P:63:MSE:HE1	1:P:66:MSE:HE1	1.94	0.50
1:F:47:THR:HG22	1:F:53:LEU:CD2	2.39	0.50
1:I:47:THR:HG22	1:I:53:LEU:CD2	2.40	0.50
1:M:47:THR:HA	1:M:52:PHE:O	2.12	0.50
1:O:11:VAL:HG22	1:O:12:THR:N	2.27	0.50
1:P:118:LEU:HD23	1:P:168:LEU:HB2	1.94	0.50
1:A:182:TYR:O	1:A:186:ILE:HG13	2.11	0.49
1:B:78:ARG:O	1:B:79:HIS:ND1	2.45	0.49
1:E:11:VAL:HG22	1:E:12:THR:H	1.77	0.49
1:E:160:ASP:O	1:E:161:ILE:C	2.51	0.49
1:H:62:ASN:HB3	1:H:65:LYS:HG3	1.94	0.49
1:C:71:SER:O	1:C:75:GLU:HG3	2.12	0.49
1:G:189:LEU:HA	1:G:192:GLN:HG2	1.94	0.49
1:I:156:GLN:HG3	1:I:159:GLN:NE2	2.27	0.49
1:I:189:LEU:HA	1:I:192:GLN:CG	2.41	0.49
1:I:42:GLU:OE1	1:I:136:PRO:HD3	2.12	0.49
1:L:63:MSE:HE1	1:L:66:MSE:HE1	1.94	0.49
1:B:6:ILE:HD13	1:B:185:LEU:HD21	1.94	0.49
1:F:103:PHE:HB3	1:F:161:ILE:HD11	1.95	0.49
1:O:120:ILE:HG23	1:O:125:CYS:HB2	1.95	0.49

Continued on next page...

Continued from previous page...

Atom-1	Atom-2	Interatomic distance (Å)	Clash overlap (Å)
2:I:301:ADP:H3'	1:M:21:LYS:HD2	1.94	0.49
1:I:135:GLN:HA	1:I:135:GLN:HE21	1.77	0.49
1:O:182:TYR:O	1:O:186:ILE:HG13	2.12	0.49
1:A:78:ARG:NH2	1:B:160:ASP:HB3	2.28	0.49
1:E:157:GLU:O	1:E:160:ASP:OD2	2.31	0.49
1:I:5:ILE:O	1:I:113:ASN:HB2	2.13	0.49
1:I:77:ALA:C	1:I:79:HIS:N	2.66	0.49
1:N:156:GLN:HG3	1:N:159:GLN:HE22	1.77	0.49
1:J:158:MSE:HE3	1:J:161:ILE:CD1	2.43	0.49
1:H:189:LEU:HA	1:H:192:GLN:CG	2.42	0.48
1:I:62:ASN:HB3	1:I:65:LYS:HG3	1.94	0.48
1:M:122:TYR:OH	1:M:144:ASP:OD1	2.24	0.48
1:L:183:GLU:HB3	1:L:187:GLN:HE21	1.78	0.48
1:A:146:HIS:O	1:A:150:MSE:HG2	2.13	0.48
1:A:75:GLU:OE2	1:A:76:SER:HB3	2.13	0.48
1:E:182:TYR:O	1:E:186:ILE:HG13	2.13	0.48
1:P:75:GLU:OE2	1:P:76:SER:HB3	2.13	0.48
1:C:63:MSE:HE1	1:C:66:MSE:HE1	1.96	0.48
1:G:5:ILE:O	1:G:113:ASN:HB2	2.13	0.48
1:K:77:ALA:O	1:K:79:HIS:N	2.46	0.48
1:L:77:ALA:C	1:L:79:HIS:N	2.66	0.48
1:N:62:ASN:O	1:N:65:LYS:HB2	2.12	0.48
1:A:156:GLN:HA	1:A:159:GLN:HE21	1.78	0.48
1:D:173:SER:HB3	1:D:176:ASP:CB	2.41	0.48
1:E:148:TRP:HB3	1:E:149:PRO:HD3	1.95	0.48
1:H:156:GLN:C	1:H:158:MSE:H	2.17	0.48
1:H:26:HIS:CD2	1:P:179:LEU:HD13	2.48	0.48
1:M:11:VAL:HG22	1:M:12:THR:N	2.27	0.48
1:P:148:TRP:HB3	1:P:149:PRO:HD3	1.94	0.48
1:D:146:HIS:O	1:D:150:MSE:HG2	2.13	0.48
1:F:11:VAL:HG22	1:F:12:THR:N	2.28	0.48
1:N:78:ARG:O	1:N:79:HIS:ND1	2.46	0.48
1:B:47:THR:HG22	1:B:53:LEU:CD2	2.42	0.48
1:H:118:LEU:HD23	1:H:168:LEU:HB2	1.96	0.48
1:M:169:ASP:HB3	1:M:172:LYS:HG3	1.95	0.48
1:N:156:GLN:C	1:N:158:MSE:H	2.16	0.48
1:O:103:PHE:HB3	1:O:161:ILE:HD11	1.96	0.48
1:C:173:SER:HB3	1:C:176:ASP:CB	2.41	0.48
1:J:33:ILE:CD1	1:J:95:LEU:HD21	2.43	0.48
1:F:75:GLU:O	1:F:78:ARG:NH1	2.47	0.48
1:K:120:ILE:CG2	1:K:125:CYS:HB2	2.44	0.48

Continued on next page...

Continued from previous page...

Atom-1	Atom-2	Interatomic distance (Å)	Clash overlap (Å)
1:O:123:GLU:CD	1:O:123:GLU:H	2.17	0.48
1:C:183:GLU:HB3	1:C:187:GLN:HE21	1.77	0.47
1:J:92:ILE:O	1:J:92:ILE:HG23	2.14	0.47
1:P:66:MSE:O	1:P:70:ILE:HG13	2.14	0.47
1:A:77:ALA:C	1:A:79:HIS:N	2.67	0.47
1:E:156:GLN:HG3	1:E:159:GLN:NE2	2.29	0.47
1:K:45:ILE:HG13	1:K:55:TYR:CZ	2.49	0.47
1:B:77:ALA:C	1:B:79:HIS:N	2.68	0.47
1:I:124:GLU:O	1:I:128:ARG:HG3	2.14	0.47
1:O:41:PRO:HG2	1:O:44:GLU:HG3	1.95	0.47
1:P:45:ILE:HG13	1:P:55:TYR:CZ	2.50	0.47
1:O:169:ASP:HB3	1:O:172:LYS:HG3	1.96	0.47
1:K:62:ASN:HB3	1:K:65:LYS:CG	2.45	0.47
1:B:77:ALA:O	1:B:79:HIS:N	2.48	0.47
1:D:151:TYR:O	1:D:154:TYR:N	2.44	0.47
1:L:77:ALA:O	1:L:79:HIS:N	2.47	0.47
1:M:63:MSE:HE1	1:M:66:MSE:CE	2.45	0.47
1:C:156:GLN:HG3	1:C:159:GLN:NE2	2.30	0.47
1:G:62:ASN:HB3	1:G:65:LYS:HG3	1.96	0.47
1:J:126:LYS:HB2	1:J:143:PHE:CE2	2.50	0.47
1:M:120:ILE:HG23	1:M:125:CYS:HB2	1.96	0.47
1:E:45:ILE:HG13	1:E:55:TYR:CZ	2.50	0.47
1:I:154:TYR:O	1:I:158:MSE:HG3	2.15	0.47
1:N:189:LEU:HA	1:N:192:GLN:HG2	1.96	0.47
1:B:5:ILE:O	1:B:113:ASN:HB2	2.14	0.47
1:D:78:ARG:O	1:D:79:HIS:ND1	2.48	0.47
1:F:92:ILE:HG23	1:F:92:ILE:O	2.15	0.47
1:G:120:ILE:CG2	1:G:125:CYS:HB2	2.45	0.47
1:B:92:ILE:O	1:B:92:ILE:HG23	2.15	0.46
1:F:123:GLU:H	1:F:123:GLU:CD	2.18	0.46
1:H:148:TRP:HB3	1:H:149:PRO:HD3	1.97	0.46
1:M:21:LYS:O	1:M:25:LYS:HG3	2.16	0.46
1:P:78:ARG:O	1:P:79:HIS:ND1	2.48	0.46
1:I:129:ARG:NH1	3:I:302:TIZ:O3'	2.44	0.46
1:N:62:ASN:HB3	1:N:65:LYS:CG	2.43	0.46
1:G:26:HIS:CD2	1:O:179:LEU:HD13	2.50	0.46
1:O:5:ILE:O	1:O:113:ASN:HB2	2.15	0.46
1:E:21:LYS:O	1:E:25:LYS:HG3	2.15	0.46
1:N:156:GLN:CG	1:N:159:GLN:NE2	2.76	0.46
1:O:183:GLU:HB3	1:O:187:GLN:HE22	1.77	0.46
1:A:11:VAL:HG22	1:A:12:THR:N	2.31	0.46

Continued on next page...

Continued from previous page...

Atom-1	Atom-2	Interatomic distance (Å)	Clash overlap (Å)
1:C:4:PHE:HA	1:C:113:ASN:ND2	2.30	0.46
1:I:129:ARG:O	1:I:129:ARG:HG3	2.14	0.46
1:N:63:MSE:HE1	1:N:66:MSE:CE	2.45	0.46
1:O:29:ASN:HD21	1:O:93:PRO:HG3	1.80	0.46
1:C:146:HIS:O	1:C:150:MSE:HG2	2.15	0.46
1:D:77:ALA:C	1:D:79:HIS:N	2.67	0.46
1:E:124:GLU:HA	1:E:124:GLU:OE1	2.15	0.46
1:F:183:GLU:HB3	1:F:187:GLN:HE21	1.79	0.46
1:L:146:HIS:O	1:L:150:MSE:HG2	2.14	0.46
1:P:75:GLU:O	1:P:78:ARG:NH1	2.49	0.46
1:F:41:PRO:HG2	1:F:44:GLU:HG3	1.98	0.46
1:G:75:GLU:OE2	1:G:76:SER:HB3	2.15	0.46
1:J:122:TYR:CE1	1:J:143:PHE:HE2	2.33	0.46
1:O:45:ILE:HG13	1:O:55:TYR:CE2	2.50	0.46
1:B:118:LEU:HD23	1:B:168:LEU:HB2	1.97	0.46
1:M:151:TYR:OH	1:M:155:ARG:HD3	2.16	0.46
1:N:11:VAL:HG22	1:N:12:THR:N	2.31	0.46
1:A:33:ILE:CD1	1:A:95:LEU:HD11	2.46	0.46
1:D:11:VAL:HG22	1:D:12:THR:N	2.31	0.46
1:D:2:LYS:O	1:D:92:ILE:HG13	2.14	0.46
1:I:92:ILE:HG23	1:I:92:ILE:O	2.16	0.46
1:K:71:SER:O	1:K:75:GLU:HB3	2.16	0.46
1:A:183:GLU:HB3	1:A:187:GLN:NE2	2.31	0.46
1:D:107:PRO:HG3	1:F:64:GLU:HA	1.96	0.46
1:E:62:ASN:O	1:E:65:LYS:HB2	2.15	0.46
1:L:123:GLU:H	1:L:123:GLU:CD	2.20	0.46
1:A:78:ARG:NH2	1:A:79:HIS:CE1	2.84	0.46
1:B:148:TRP:HB3	1:B:149:PRO:HD3	1.96	0.46
1:B:19:LEU:HD21	1:B:181:VAL:HG21	1.97	0.46
1:E:29:ASN:ND2	1:E:93:PRO:HA	2.31	0.46
1:G:77:ALA:C	1:G:79:HIS:N	2.69	0.46
1:A:156:GLN:CG	1:A:159:GLN:NE2	2.77	0.45
1:E:158:MSE:HE3	1:E:161:ILE:CD1	2.46	0.45
1:G:33:ILE:HD12	1:G:95:LEU:HD21	1.98	0.45
1:G:47:THR:HG22	1:G:53:LEU:CD2	2.36	0.45
1:A:63:MSE:HE1	1:A:66:MSE:CE	2.46	0.45
1:D:189:LEU:HA	1:D:192:GLN:HG2	1.97	0.45
1:D:47:THR:HA	1:D:52:PHE:O	2.16	0.45
1:E:77:ALA:C	1:E:79:HIS:N	2.69	0.45
1:G:16:LYS:HE3	1:G:99:GLY:C	2.37	0.45
1:K:77:ALA:C	1:K:79:HIS:N	2.67	0.45

Continued on next page...

Continued from previous page...

Atom-1	Atom-2	Interatomic distance (Å)	Clash overlap (Å)
1:C:53:LEU:HD13	1:C:55:TYR:HE1	1.82	0.45
1:D:151:TYR:O	1:D:154:TYR:HB3	2.15	0.45
1:D:45:ILE:HG22	1:D:46:GLU:N	2.32	0.45
1:G:157:GLU:O	1:G:160:ASP:OD2	2.35	0.45
1:B:123:GLU:H	1:B:123:GLU:CD	2.20	0.45
1:E:21:LYS:HA	1:E:21:LYS:HD3	1.83	0.45
1:L:103:PHE:HB3	1:L:161:ILE:HD11	1.97	0.45
1:B:66:MSE:O	1:B:70:ILE:HG13	2.17	0.45
1:E:66:MSE:O	1:E:70:ILE:HG13	2.17	0.45
1:J:118:LEU:HD23	1:J:168:LEU:HB2	1.99	0.45
1:F:77:ALA:O	1:F:79:HIS:N	2.49	0.45
1:O:146:HIS:O	1:O:150:MSE:HG2	2.17	0.45
1:O:173:SER:HB3	1:O:176:ASP:CB	2.46	0.45
1:C:123:GLU:CD	1:C:123:GLU:N	2.68	0.45
1:D:48:ASP:OD2	1:D:52:PHE:HB2	2.16	0.45
1:G:62:ASN:O	1:G:65:LYS:HB2	2.17	0.45
1:N:5:ILE:O	1:N:113:ASN:HB2	2.17	0.45
1:P:146:HIS:O	1:P:150:MSE:HG2	2.16	0.45
1:B:156:GLN:C	1:B:158:MSE:H	2.19	0.45
1:C:11:VAL:HG22	1:C:12:THR:H	1.80	0.45
1:D:169:ASP:HB3	1:D:172:LYS:HG3	1.98	0.45
1:H:120:ILE:HG23	1:H:125:CYS:HB2	1.99	0.45
1:M:45:ILE:HG22	1:M:46:GLU:N	2.31	0.45
1:O:148:TRP:HB3	1:O:149:PRO:HD3	1.97	0.45
1:P:21:LYS:HA	1:P:21:LYS:HD3	1.86	0.45
1:P:21:LYS:O	1:P:25:LYS:HG3	2.17	0.45
1:C:63:MSE:O	1:C:67:MSE:HG2	2.16	0.45
1:D:9:SER:C	1:D:16:LYS:HD3	2.37	0.45
1:E:12:THR:O	1:E:13:ASN:HB2	2.17	0.45
1:F:74:MSE:O	1:F:77:ALA:HB3	2.16	0.45
1:G:9:SER:HA	1:G:99:GLY:O	2.16	0.45
1:L:129:ARG:HG3	1:L:129:ARG:O	2.16	0.45
1:M:62:ASN:HB3	1:M:65:LYS:CG	2.46	0.45
1:P:33:ILE:CG1	1:P:95:LEU:HD11	2.45	0.45
1:D:28:PRO:O	1:D:29:ASN:C	2.54	0.45
1:F:129:ARG:NH1	3:F:302:TIZ:O3'	2.42	0.45
1:K:33:ILE:CD1	1:K:95:LEU:HD11	2.47	0.45
1:A:33:ILE:CG1	1:A:95:LEU:HD11	2.45	0.44
1:C:19:LEU:HD21	1:C:181:VAL:HG21	1.99	0.44
1:D:77:ALA:O	1:D:79:HIS:N	2.49	0.44
1:K:146:HIS:O	1:K:150:MSE:HG2	2.18	0.44

Continued on next page...

Continued from previous page...

Atom-1	Atom-2	Interatomic distance (Å)	Clash overlap (Å)
1:I:52:PHE:CD1	1:K:49:LYS:HE3	2.52	0.44
1:L:11:VAL:HG22	1:L:12:THR:N	2.31	0.44
1:A:123:GLU:CD	1:A:123:GLU:H	2.20	0.44
1:B:189:LEU:HA	1:B:192:GLN:HG2	1.98	0.44
1:F:185:LEU:O	1:F:189:LEU:HG	2.17	0.44
1:I:47:THR:HA	1:I:52:PHE:O	2.17	0.44
1:K:6:ILE:HD13	1:K:185:LEU:HD21	1.99	0.44
1:M:70:ILE:O	1:M:74:MSE:HG3	2.18	0.44
1:P:11:VAL:HG22	1:P:12:THR:N	2.31	0.44
1:D:47:THR:HG22	1:D:53:LEU:CD2	2.46	0.44
1:F:6:ILE:HD13	1:F:185:LEU:HD21	1.99	0.44
1:F:77:ALA:C	1:F:79:HIS:N	2.70	0.44
1:H:179:LEU:O	1:H:183:GLU:HG3	2.17	0.44
1:I:75:GLU:O	1:I:78:ARG:NH1	2.50	0.44
1:E:177:LEU:O	1:E:181:VAL:HG23	2.17	0.44
1:E:183:GLU:HB3	1:E:187:GLN:HE21	1.81	0.44
1:L:75:GLU:OE2	1:L:76:SER:HB3	2.18	0.44
1:O:77:ALA:C	1:O:79:HIS:N	2.70	0.44
1:A:127:ARG:HH11	1:A:127:ARG:HG2	1.83	0.44
1:C:160:ASP:O	1:C:161:ILE:C	2.56	0.44
1:G:136:PRO:HA	1:G:137:PRO:HD3	1.86	0.44
1:J:48:ASP:OD2	1:J:52:PHE:HB2	2.17	0.44
1:J:71:SER:O	1:J:75:GLU:HG3	2.16	0.44
1:K:32:VAL:HG22	1:K:96:ILE:HB	1.99	0.44
1:I:33:ILE:CG1	1:I:95:LEU:HD11	2.45	0.44
1:L:122:TYR:CE1	1:L:143:PHE:HE2	2.36	0.44
1:A:75:GLU:CD	1:A:76:SER:N	2.70	0.44
1:C:183:GLU:HB3	1:C:187:GLN:HE22	1.82	0.44
1:C:92:ILE:HG23	1:C:92:ILE:O	2.18	0.44
1:C:108:LEU:HD13	1:C:112:TRP:CZ2	2.53	0.44
1:C:186:ILE:O	1:C:190:ALA:HB2	2.17	0.44
1:F:120:ILE:HG23	1:F:125:CYS:HB2	2.00	0.44
1:H:17:THR:O	1:H:21:LYS:HG2	2.18	0.44
1:K:9:SER:HA	1:K:99:GLY:O	2.18	0.44
1:L:17:THR:O	1:L:21:LYS:HG2	2.18	0.44
1:L:62:ASN:O	1:L:65:LYS:HB2	2.17	0.44
1:M:148:TRP:CD1	1:M:152:LEU:HD11	2.52	0.44
1:M:157:GLU:O	1:M:160:ASP:OD2	2.36	0.44
1:N:19:LEU:HD21	1:N:181:VAL:HG21	1.99	0.44
1:N:71:SER:O	1:N:75:GLU:HG3	2.17	0.44
1:A:120:ILE:HG23	1:A:125:CYS:HB2	1.99	0.44

Continued on next page...

Continued from previous page...

Atom-1	Atom-2	Interatomic distance (Å)	Clash overlap (Å)
1:C:156:GLN:C	1:C:158:MSE:H	2.21	0.44
1:F:45:ILE:HG13	1:F:55:TYR:CZ	2.53	0.44
1:I:169:ASP:HB3	1:I:172:LYS:HG3	2.00	0.44
1:J:75:GLU:OE2	1:J:76:SER:HB3	2.18	0.44
1:N:18:THR:HG21	1:N:174:GLU:CD	2.38	0.44
1:O:151:TYR:OH	1:O:155:ARG:HD3	2.18	0.44
1:P:179:LEU:O	1:P:183:GLU:HG3	2.17	0.44
1:B:71:SER:O	1:B:75:GLU:HG3	2.17	0.43
1:F:21:LYS:O	1:F:25:LYS:HG3	2.18	0.43
1:G:21:LYS:HD2	2:H:301:ADP:H3'	2.00	0.43
1:H:153:LYS:O	1:H:157:GLU:HG3	2.17	0.43
1:J:49:LYS:H	1:J:49:LYS:HG3	1.61	0.43
1:J:62:ASN:HB3	1:J:65:LYS:CG	2.46	0.43
1:P:178:PHE:O	1:P:182:TYR:HB2	2.18	0.43
1:B:183:GLU:HB3	1:B:187:GLN:HE21	1.80	0.43
1:G:48:ASP:OD2	1:G:52:PHE:HB2	2.19	0.43
1:G:78:ARG:O	1:G:79:HIS:ND1	2.51	0.43
1:H:106:LYS:HB2	1:H:107:PRO:HD3	2.00	0.43
1:M:45:ILE:HG13	1:M:55:TYR:CZ	2.53	0.43
1:I:78:ARG:NH2	1:J:160:ASP:HA	2.33	0.43
1:M:151:TYR:O	1:M:154:TYR:HB3	2.19	0.43
1:N:92:ILE:HG23	1:N:92:ILE:O	2.18	0.43
1:D:71:SER:O	1:D:75:GLU:HG3	2.17	0.43
1:D:33:ILE:CG1	1:D:95:LEU:HD11	2.46	0.43
1:E:153:LYS:O	1:E:157:GLU:HG3	2.18	0.43
1:F:118:LEU:HD23	1:F:168:LEU:HB2	2.00	0.43
1:F:143:PHE:HA	1:F:147:VAL:HB	2.01	0.43
1:F:63:MSE:HE1	1:F:66:MSE:HE1	2.01	0.43
1:I:64:GLU:CD	1:J:40:LYS:NZ	2.70	0.43
1:J:146:HIS:O	1:J:150:MSE:HG2	2.18	0.43
1:B:151:TYR:OH	1:B:155:ARG:HD3	2.18	0.43
1:B:27:LEU:HD23	1:B:27:LEU:HA	1.91	0.43
1:H:127:ARG:NH1	1:H:127:ARG:HG2	2.33	0.43
1:K:19:LEU:HD21	1:K:181:VAL:HG21	1.99	0.43
1:L:116:TYR:CD2	1:L:166:VAL:HB	2.53	0.43
1:P:27:LEU:HD11	1:P:185:LEU:HD23	2.01	0.43
1:F:150:MSE:HE2	1:F:150:MSE:HA	2.00	0.43
1:H:127:ARG:HH11	1:H:127:ARG:HG2	1.82	0.43
1:I:11:VAL:HG11	1:I:120:ILE:HG22	2.01	0.43
1:K:92:ILE:O	1:K:92:ILE:HG23	2.19	0.43
1:M:75:GLU:O	1:M:78:ARG:NH1	2.52	0.43

Continued on next page...

Continued from previous page...

Atom-1	Atom-2	Interatomic distance (Å)	Clash overlap (Å)
1:B:122:TYR:CE1	1:B:143:PHE:HE2	2.36	0.43
1:C:189:LEU:HA	1:C:192:GLN:CG	2.48	0.43
1:H:45:ILE:HG22	1:H:46:GLU:N	2.33	0.43
1:K:54:GLN:O	1:K:60:ALA:HB2	2.19	0.43
1:D:78:ARG:NH2	1:D:79:HIS:HE1	2.17	0.43
1:H:136:PRO:HA	1:H:137:PRO:HD3	1.88	0.43
1:H:179:LEU:HD13	1:P:26:HIS:CD2	2.54	0.43
1:I:173:SER:HB3	1:I:176:ASP:CB	2.44	0.43
1:J:156:GLN:C	1:J:158:MSE:N	2.72	0.43
1:K:41:PRO:HG2	1:K:44:GLU:HG3	2.01	0.43
1:C:106:LYS:HB2	1:C:107:PRO:HD3	2.01	0.43
1:C:75:GLU:OE2	1:C:76:SER:HB3	2.19	0.43
1:E:47:THR:HG22	1:E:53:LEU:CD2	2.47	0.43
1:G:124:GLU:HA	1:G:124:GLU:OE1	2.19	0.43
1:J:75:GLU:O	1:J:78:ARG:NH1	2.52	0.43
1:K:160:ASP:O	1:K:161:ILE:C	2.57	0.43
1:K:62:ASN:O	1:K:65:LYS:HB2	2.19	0.43
1:L:156:GLN:C	1:L:158:MSE:H	2.23	0.43
1:N:54:GLN:O	1:N:60:ALA:HB2	2.19	0.43
1:A:106:LYS:HG3	1:B:68:SER:HB2	2.00	0.42
1:B:33:ILE:CG1	1:B:95:LEU:HD11	2.47	0.42
1:D:183:GLU:HB3	1:D:187:GLN:NE2	2.34	0.42
1:F:148:TRP:HB3	1:F:149:PRO:HD3	2.00	0.42
1:O:97:ILE:HD12	1:O:112:TRP:HZ3	1.84	0.42
1:O:179:LEU:O	1:O:183:GLU:HG3	2.19	0.42
1:E:63:MSE:HE1	1:E:66:MSE:CE	2.49	0.42
1:L:29:ASN:ND2	1:L:93:PRO:CA	2.82	0.42
1:P:92:ILE:HG23	1:P:92:ILE:O	2.19	0.42
1:A:46:GLU:O	1:A:54:GLN:N	2.40	0.42
1:B:47:THR:HA	1:B:52:PHE:O	2.20	0.42
1:D:17:THR:O	1:D:21:LYS:HG2	2.20	0.42
1:G:71:SER:O	1:G:75:GLU:HG3	2.19	0.42
1:G:75:GLU:CD	1:G:76:SER:N	2.72	0.42
1:J:47:THR:HA	1:J:52:PHE:O	2.19	0.42
1:K:21:LYS:O	1:K:25:LYS:HG3	2.19	0.42
1:L:78:ARG:CZ	1:L:78:ARG:HB2	2.49	0.42
1:M:120:ILE:HA	1:M:120:ILE:HD12	1.92	0.42
1:M:175:GLU:HG3	1:M:176:ASP:N	2.33	0.42
1:O:17:THR:O	1:O:21:LYS:HG2	2.19	0.42
1:B:136:PRO:HA	1:B:137:PRO:HD3	1.84	0.42
1:D:21:LYS:O	1:D:25:LYS:HG3	2.18	0.42

Continued on next page...

Continued from previous page...

Atom-1	Atom-2	Interatomic distance (Å)	Clash overlap (Å)
1:G:33:ILE:CG1	1:G:95:LEU:HD11	2.44	0.42
1:J:158:MSE:HE3	1:J:161:ILE:HD11	2.00	0.42
1:N:124:GLU:O	1:N:128:ARG:HG3	2.18	0.42
1:A:72:CYS:O	1:A:75:GLU:OE2	2.37	0.42
1:F:27:LEU:HD11	1:F:185:LEU:HD23	2.01	0.42
1:L:41:PRO:HG2	1:L:44:GLU:HG3	2.01	0.42
1:N:49:LYS:HG3	1:N:49:LYS:H	1.69	0.42
1:A:189:LEU:HA	1:A:192:GLN:CG	2.50	0.42
1:J:41:PRO:HG2	1:J:44:GLU:HG3	2.02	0.42
1:K:127:ARG:HG2	1:K:127:ARG:HH11	1.84	0.42
1:K:183:GLU:HB3	1:K:187:GLN:HE21	1.81	0.42
1:N:160:ASP:O	1:N:161:ILE:C	2.58	0.42
1:O:97:ILE:HD12	1:O:112:TRP:CZ3	2.54	0.42
1:B:49:LYS:HG3	1:B:49:LYS:H	1.64	0.42
1:D:64:GLU:OE1	1:F:59:GLU:HG3	2.19	0.42
1:I:45:ILE:HG22	1:I:46:GLU:N	2.35	0.42
1:J:33:ILE:HD12	1:J:95:LEU:HD21	2.01	0.42
1:A:9:SER:HA	1:A:99:GLY:O	2.19	0.42
1:D:153:LYS:O	1:D:157:GLU:HG3	2.20	0.42
1:H:173:SER:HB3	1:H:176:ASP:CB	2.44	0.42
1:H:78:ARG:O	1:H:79:HIS:ND1	2.53	0.42
1:H:29:ASN:ND2	1:H:93:PRO:CA	2.83	0.42
1:I:156:GLN:C	1:I:158:MSE:H	2.23	0.42
1:F:173:SER:HB3	1:F:176:ASP:CB	2.44	0.42
1:N:33:ILE:CD1	1:N:95:LEU:HD21	2.50	0.42
1:O:108:LEU:HD13	1:O:112:TRP:CZ2	2.55	0.42
1:B:54:GLN:O	1:B:60:ALA:HB2	2.20	0.42
1:D:120:ILE:HG23	1:D:125:CYS:HB2	2.01	0.42
1:G:103:PHE:HB3	1:G:161:ILE:HD11	2.02	0.42
1:J:160:ASP:O	1:J:161:ILE:C	2.55	0.42
1:O:75:GLU:O	1:O:78:ARG:NH1	2.53	0.42
2:D:301:ADP:O5'	2:D:301:ADP:H2'	2.20	0.41
1:C:21:LYS:HD2	2:F:301:ADP:H3'	2.00	0.41
1:J:27:LEU:HD23	1:J:27:LEU:HA	1.89	0.41
1:K:123:GLU:CD	1:K:123:GLU:H	2.22	0.41
1:K:75:GLU:OE2	1:K:76:SER:N	2.53	0.41
1:L:169:ASP:HB3	1:L:172:LYS:HG3	2.02	0.41
1:N:41:PRO:HG2	1:N:44:GLU:HG3	2.02	0.41
1:A:127:ARG:HG2	1:A:127:ARG:NH1	2.36	0.41
1:D:124:GLU:OE1	1:D:124:GLU:HA	2.20	0.41
1:E:169:ASP:O	1:E:177:LEU:HD21	2.20	0.41

Continued on next page...

Continued from previous page...

Atom-1	Atom-2	Interatomic distance (Å)	Clash overlap (Å)
1:H:97:ILE:HD12	1:H:112:TRP:CZ3	2.55	0.41
1:L:169:ASP:O	1:L:177:LEU:HD21	2.19	0.41
1:N:122:TYR:CE1	1:N:143:PHE:HE2	2.37	0.41
1:P:5:ILE:O	1:P:113:ASN:HB2	2.19	0.41
1:A:123:GLU:OE2	1:C:148:TRP:NE1	2.53	0.41
1:D:78:ARG:CZ	1:F:160:ASP:CB	2.82	0.41
1:F:66:MSE:O	1:F:70:ILE:HG13	2.20	0.41
1:I:124:GLU:OE2	1:I:128:ARG:NE	2.46	0.41
1:K:92:ILE:HA	1:K:93:PRO:HD3	1.85	0.41
1:L:64:GLU:CD	1:N:40:LYS:NZ	2.72	0.41
1:O:136:PRO:HA	1:O:137:PRO:HD3	1.79	0.41
1:A:136:PRO:HA	1:A:137:PRO:HD3	1.85	0.41
1:C:45:ILE:HG13	1:C:55:TYR:CZ	2.56	0.41
1:D:78:ARG:NH2	1:F:160:ASP:CB	2.78	0.41
1:F:124:GLU:O	1:F:128:ARG:HG3	2.21	0.41
1:I:78:ARG:O	1:I:79:HIS:ND1	2.53	0.41
1:J:11:VAL:CG1	1:J:120:ILE:HG22	2.50	0.41
1:J:21:LYS:HA	1:J:21:LYS:HD3	1.84	0.41
1:L:92:ILE:HA	1:L:93:PRO:HD3	1.93	0.41
1:M:169:ASP:O	1:M:177:LEU:HD21	2.20	0.41
1:C:47:THR:HG22	1:C:53:LEU:CD2	2.44	0.41
1:I:174:GLU:OE1	1:M:25:LYS:NZ	2.47	0.41
1:I:52:PHE:HD1	1:K:49:LYS:HE3	1.84	0.41
1:M:148:TRP:NE1	1:M:152:LEU:HD11	2.35	0.41
1:O:53:LEU:HD13	1:O:55:TYR:HE1	1.84	0.41
1:C:120:ILE:HG23	1:C:125:CYS:HB2	2.03	0.41
1:H:122:TYR:CE1	1:H:143:PHE:HE2	2.37	0.41
1:J:108:LEU:HD13	1:J:112:TRP:CZ2	2.54	0.41
1:K:120:ILE:HG23	1:K:125:CYS:HB2	2.01	0.41
1:K:158:MSE:HE3	1:K:161:ILE:CD1	2.51	0.41
1:N:123:GLU:CD	1:N:123:GLU:N	2.71	0.41
1:B:45:ILE:HG13	1:B:55:TYR:CZ	2.56	0.41
1:D:75:GLU:OE2	1:D:76:SER:HB3	2.21	0.41
1:D:33:ILE:HD12	1:D:95:LEU:HD21	2.02	0.41
1:H:77:ALA:C	1:H:79:HIS:N	2.73	0.41
1:N:70:ILE:O	1:N:74:MSE:HG3	2.21	0.41
1:P:136:PRO:HA	1:P:137:PRO:HD3	1.88	0.41
1:A:157:GLU:O	1:A:160:ASP:OD2	2.39	0.41
1:C:33:ILE:CG1	1:C:95:LEU:HD11	2.49	0.41
1:E:158:MSE:HE3	1:E:161:ILE:HD11	2.02	0.41
1:J:19:LEU:HD21	1:J:181:VAL:HG21	2.01	0.41

Continued on next page...

Continued from previous page...

Atom-1	Atom-2	Interatomic distance (Å)	Clash overlap (Å)
1:K:156:GLN:C	1:K:158:MSE:H	2.24	0.41
1:O:49:LYS:HG3	1:O:49:LYS:H	1.68	0.41
1:P:175:GLU:HG3	1:P:176:ASP:N	2.36	0.41
1:B:120:ILE:CG2	1:B:125:CYS:HB2	2.51	0.41
1:K:46:GLU:O	1:K:54:GLN:HG2	2.21	0.41
1:P:11:VAL:HB	1:P:151:TYR:CE1	2.56	0.41
1:C:77:ALA:C	1:C:79:HIS:N	2.74	0.41
1:E:136:PRO:HA	1:E:137:PRO:HD3	1.87	0.41
1:E:27:LEU:HA	1:E:27:LEU:HD23	1.94	0.41
2:E:301:ADP:H2'	2:E:301:ADP:O5'	2.21	0.41
1:F:169:ASP:HB3	1:F:172:LYS:HG3	2.03	0.41
1:F:45:ILE:HG13	1:F:55:TYR:CE2	2.55	0.41
1:G:122:TYR:OH	1:G:144:ASP:OD1	2.30	0.41
1:I:29:ASN:ND2	1:I:93:PRO:HA	2.36	0.41
1:B:21:LYS:O	1:B:25:LYS:HG3	2.20	0.41
1:B:46:GLU:O	1:B:54:GLN:HG2	2.20	0.41
1:E:45:ILE:HG22	1:E:46:GLU:N	2.36	0.41
1:J:158:MSE:CE	1:J:161:ILE:HD12	2.51	0.41
1:I:25:LYS:NZ	1:M:174:GLU:OE1	2.49	0.41
1:N:62:ASN:CB	1:N:65:LYS:HG3	2.48	0.41
1:O:46:GLU:O	1:O:54:GLN:HG2	2.21	0.41
1:A:149:PRO:HB3	1:C:50:ASN:CG	2.42	0.40
1:A:16:LYS:HE3	1:A:99:GLY:C	2.41	0.40
1:B:33:ILE:CD1	1:B:95:LEU:HD11	2.51	0.40
2:C:301:ADP:H2'	2:C:301:ADP:O5'	2.21	0.40
1:D:11:VAL:HG22	1:D:12:THR:H	1.86	0.40
1:H:156:GLN:C	1:H:158:MSE:N	2.74	0.40
1:H:62:ASN:O	1:H:65:LYS:HB2	2.20	0.40
1:I:183:GLU:HB3	1:I:187:GLN:HE22	1.81	0.40
1:J:77:ALA:C	1:J:79:HIS:N	2.72	0.40
1:L:175:GLU:HG3	1:L:176:ASP:N	2.37	0.40
1:P:45:ILE:HG22	1:P:46:GLU:N	2.37	0.40
1:A:77:ALA:O	1:A:79:HIS:N	2.55	0.40
1:B:106:LYS:HA	1:B:106:LYS:HD3	1.95	0.40
1:C:155:ARG:O	1:C:158:MSE:HB2	2.21	0.40
1:D:92:ILE:HG23	1:D:92:ILE:O	2.21	0.40
1:E:120:ILE:HA	1:E:121:PRO:HD3	1.96	0.40
1:E:114:ARG:HD3	1:E:188:GLU:HG3	2.04	0.40
1:I:182:TYR:O	1:I:186:ILE:HG13	2.21	0.40
1:K:122:TYR:CE1	1:K:143:PHE:HE2	2.39	0.40
1:L:136:PRO:HA	1:L:137:PRO:HD3	1.83	0.40

Continued on next page...

Continued from previous page...

Atom-1	Atom-2	Interatomic distance (Å)	Clash overlap (Å)
1:N:189:LEU:HA	1:N:192:GLN:CG	2.52	0.40
1:O:120:ILE:HA	1:O:120:ILE:HD12	1.95	0.40
1:P:92:ILE:HA	1:P:93:PRO:HD3	1.82	0.40
1:B:62:ASN:HB3	1:B:65:LYS:CG	2.49	0.40
1:B:75:GLU:O	1:B:78:ARG:NH1	2.54	0.40
1:C:153:LYS:O	1:C:157:GLU:HG3	2.20	0.40
1:G:45:ILE:HG13	1:G:55:TYR:CZ	2.57	0.40
1:H:97:ILE:HD12	1:H:112:TRP:HZ3	1.85	0.40
1:H:92:ILE:HG23	1:H:92:ILE:O	2.22	0.40
1:I:11:VAL:CG2	1:I:12:THR:N	2.85	0.40
1:I:186:ILE:C	1:I:188:GLU:H	2.25	0.40
1:M:126:LYS:HB2	1:M:143:PHE:CE2	2.56	0.40
1:N:29:ASN:HD21	1:N:93:PRO:HG3	1.86	0.40
1:O:63:MSE:HE1	1:O:66:MSE:CE	2.50	0.40
1:C:45:ILE:HG22	1:C:46:GLU:N	2.36	0.40
1:D:150:MSE:HA	1:D:150:MSE:HE2	2.03	0.40
1:D:45:ILE:HG13	1:D:55:TYR:CZ	2.56	0.40
1:M:183:GLU:HB3	1:M:187:GLN:HE21	1.84	0.40
1:P:156:GLN:C	1:P:158:MSE:H	2.24	0.40
1:P:77:ALA:C	1:P:79:HIS:N	2.73	0.40
1:A:6:ILE:HD13	1:A:185:LEU:HD21	2.03	0.40
1:B:158:MSE:HE3	1:B:161:ILE:HD12	2.02	0.40
1:D:29:ASN:ND2	1:D:93:PRO:HA	2.36	0.40
1:G:63:MSE:HE1	1:G:66:MSE:CE	2.52	0.40
1:G:92:ILE:HG23	1:G:92:ILE:O	2.22	0.40
1:H:151:TYR:OH	1:H:155:ARG:HD3	2.22	0.40
1:K:120:ILE:HA	1:K:121:PRO:HD3	1.94	0.40
1:O:189:LEU:HA	1:O:192:GLN:CG	2.51	0.40
1:P:78:ARG:NH2	1:P:79:HIS:CE1	2.89	0.40

There are no symmetry-related clashes.

5.3 Torsion angles ⓘ

5.3.1 Protein backbone ⓘ

In the following table, the Percentiles column shows the percent Ramachandran outliers of the chain as a percentile score with respect to all X-ray entries followed by that with respect to entries of similar resolution.

The Analysed column shows the number of residues for which the backbone conformation was analysed, and the total number of residues.

Mol	Chain	Analysed	Favoured	Allowed	Outliers	Percentiles	
1	A	175/199 (88%)	163 (93%)	11 (6%)	1 (1%)	28	56
1	B	175/199 (88%)	162 (93%)	12 (7%)	1 (1%)	28	56
1	C	175/199 (88%)	161 (92%)	13 (7%)	1 (1%)	28	56
1	D	175/199 (88%)	163 (93%)	11 (6%)	1 (1%)	28	56
1	E	175/199 (88%)	162 (93%)	11 (6%)	2 (1%)	17	40
1	F	175/199 (88%)	162 (93%)	12 (7%)	1 (1%)	28	56
1	G	175/199 (88%)	164 (94%)	10 (6%)	1 (1%)	28	56
1	H	175/199 (88%)	168 (96%)	6 (3%)	1 (1%)	28	56
1	I	175/199 (88%)	161 (92%)	9 (5%)	5 (3%)	5	13
1	J	175/199 (88%)	159 (91%)	15 (9%)	1 (1%)	28	56
1	K	175/199 (88%)	161 (92%)	12 (7%)	2 (1%)	17	40
1	L	175/199 (88%)	163 (93%)	11 (6%)	1 (1%)	28	56
1	M	175/199 (88%)	163 (93%)	12 (7%)	0	100	100
1	N	175/199 (88%)	164 (94%)	9 (5%)	2 (1%)	17	40
1	O	175/199 (88%)	165 (94%)	9 (5%)	1 (1%)	28	56
1	P	175/199 (88%)	161 (92%)	13 (7%)	1 (1%)	28	56
All	All	2800/3184 (88%)	2602 (93%)	176 (6%)	22 (1%)	22	49

All (22) Ramachandran outliers are listed below:

Mol	Chain	Res	Type
1	I	78	ARG
1	I	136	PRO
1	D	78	ARG
1	F	78	ARG
1	I	135	GLN
1	K	78	ARG
1	A	78	ARG
1	B	78	ARG
1	J	78	ARG
1	L	78	ARG
1	N	78	ARG
1	O	78	ARG
1	P	172	LYS
1	G	78	ARG
1	H	78	ARG
1	C	78	ARG

Continued on next page...

Continued from previous page...

Mol	Chain	Res	Type
1	E	78	ARG
1	E	161	ILE
1	K	161	ILE
1	N	161	ILE
1	I	11	VAL
1	I	161	ILE

5.3.2 Protein sidechains ⓘ

In the following table, the Percentiles column shows the percent sidechain outliers of the chain as a percentile score with respect to all X-ray entries followed by that with respect to entries of similar resolution.

The Analysed column shows the number of residues for which the sidechain conformation was analysed, and the total number of residues.

Mol	Chain	Analysed	Rotameric	Outliers	Percentiles	
1	A	166/177 (94%)	160 (96%)	6 (4%)	40	70
1	B	166/177 (94%)	161 (97%)	5 (3%)	46	76
1	C	166/177 (94%)	161 (97%)	5 (3%)	46	76
1	D	166/177 (94%)	162 (98%)	4 (2%)	54	83
1	E	166/177 (94%)	161 (97%)	5 (3%)	46	76
1	F	166/177 (94%)	161 (97%)	5 (3%)	46	76
1	G	166/177 (94%)	161 (97%)	5 (3%)	46	76
1	H	166/177 (94%)	161 (97%)	5 (3%)	46	76
1	I	166/177 (94%)	160 (96%)	6 (4%)	40	70
1	J	166/177 (94%)	161 (97%)	5 (3%)	46	76
1	K	166/177 (94%)	160 (96%)	6 (4%)	40	70
1	L	166/177 (94%)	161 (97%)	5 (3%)	46	76
1	M	166/177 (94%)	161 (97%)	5 (3%)	46	76
1	N	166/177 (94%)	161 (97%)	5 (3%)	46	76
1	O	166/177 (94%)	159 (96%)	7 (4%)	34	65
1	P	166/177 (94%)	161 (97%)	5 (3%)	46	76
All	All	2656/2832 (94%)	2572 (97%)	84 (3%)	44	75

All (84) residues with a non-rotameric sidechain are listed below:

Mol	Chain	Res	Type
1	A	24	GLN
1	A	47	THR
1	A	56	ASP
1	A	75	GLU
1	A	160	ASP
1	A	185	LEU
1	B	24	GLN
1	B	56	ASP
1	B	75	GLU
1	B	160	ASP
1	B	185	LEU
1	C	24	GLN
1	C	56	ASP
1	C	75	GLU
1	C	160	ASP
1	C	175	GLU
1	D	24	GLN
1	D	75	GLU
1	D	160	ASP
1	D	185	LEU
1	E	24	GLN
1	E	56	ASP
1	E	75	GLU
1	E	160	ASP
1	E	185	LEU
1	F	24	GLN
1	F	56	ASP
1	F	75	GLU
1	F	160	ASP
1	F	185	LEU
1	G	24	GLN
1	G	49	LYS
1	G	56	ASP
1	G	160	ASP
1	G	185	LEU
1	H	24	GLN
1	H	49	LYS
1	H	56	ASP
1	H	160	ASP
1	H	185	LEU
1	I	24	GLN
1	I	49	LYS
1	I	56	ASP

Continued on next page...

Continued from previous page...

Mol	Chain	Res	Type
1	I	135	GLN
1	I	160	ASP
1	I	185	LEU
1	J	24	GLN
1	J	49	LYS
1	J	56	ASP
1	J	160	ASP
1	J	185	LEU
1	K	24	GLN
1	K	49	LYS
1	K	56	ASP
1	K	75	GLU
1	K	160	ASP
1	K	185	LEU
1	L	24	GLN
1	L	56	ASP
1	L	67	MSE
1	L	160	ASP
1	L	185	LEU
1	M	24	GLN
1	M	47	THR
1	M	56	ASP
1	M	160	ASP
1	M	185	LEU
1	N	24	GLN
1	N	56	ASP
1	N	75	GLU
1	N	160	ASP
1	N	185	LEU
1	O	24	GLN
1	O	49	LYS
1	O	56	ASP
1	O	75	GLU
1	O	160	ASP
1	O	176	ASP
1	O	185	LEU
1	P	24	GLN
1	P	56	ASP
1	P	98	GLU
1	P	160	ASP
1	P	185	LEU

Some sidechains can be flipped to improve hydrogen bonding and reduce clashes. All (127) such

sidechains are listed below:

Mol	Chain	Res	Type
1	A	29	ASN
1	A	50	ASN
1	A	113	ASN
1	A	135	GLN
1	A	156	GLN
1	A	159	GLN
1	A	180	GLN
1	A	187	GLN
1	B	13	ASN
1	B	54	GLN
1	B	113	ASN
1	B	135	GLN
1	B	156	GLN
1	B	159	GLN
1	B	180	GLN
1	B	187	GLN
1	C	13	ASN
1	C	29	ASN
1	C	54	GLN
1	C	113	ASN
1	C	156	GLN
1	C	159	GLN
1	C	180	GLN
1	C	187	GLN
1	D	13	ASN
1	D	29	ASN
1	D	54	GLN
1	D	113	ASN
1	D	135	GLN
1	D	156	GLN
1	D	159	GLN
1	D	180	GLN
1	D	187	GLN
1	E	13	ASN
1	E	29	ASN
1	E	54	GLN
1	E	113	ASN
1	E	135	GLN
1	E	156	GLN
1	E	159	GLN
1	E	180	GLN
1	E	187	GLN

Continued on next page...

Continued from previous page...

Mol	Chain	Res	Type
1	F	13	ASN
1	F	29	ASN
1	F	113	ASN
1	F	135	GLN
1	F	159	GLN
1	F	180	GLN
1	F	187	GLN
1	G	13	ASN
1	G	54	GLN
1	G	113	ASN
1	G	156	GLN
1	G	159	GLN
1	G	180	GLN
1	G	187	GLN
1	H	13	ASN
1	H	22	ASN
1	H	29	ASN
1	H	54	GLN
1	H	113	ASN
1	H	135	GLN
1	H	156	GLN
1	H	159	GLN
1	H	180	GLN
1	H	187	GLN
1	I	13	ASN
1	I	29	ASN
1	I	50	ASN
1	I	54	GLN
1	I	113	ASN
1	I	135	GLN
1	I	159	GLN
1	I	180	GLN
1	I	187	GLN
1	J	54	GLN
1	J	113	ASN
1	J	156	GLN
1	J	159	GLN
1	J	180	GLN
1	J	187	GLN
1	K	13	ASN
1	K	29	ASN
1	K	54	GLN

Continued on next page...

Continued from previous page...

Mol	Chain	Res	Type
1	K	113	ASN
1	K	156	GLN
1	K	159	GLN
1	K	180	GLN
1	K	187	GLN
1	L	13	ASN
1	L	29	ASN
1	L	54	GLN
1	L	113	ASN
1	L	135	GLN
1	L	156	GLN
1	L	159	GLN
1	L	180	GLN
1	L	187	GLN
1	M	13	ASN
1	M	54	GLN
1	M	113	ASN
1	M	156	GLN
1	M	159	GLN
1	M	180	GLN
1	M	187	GLN
1	N	29	ASN
1	N	113	ASN
1	N	156	GLN
1	N	159	GLN
1	N	180	GLN
1	N	187	GLN
1	O	13	ASN
1	O	29	ASN
1	O	113	ASN
1	O	135	GLN
1	O	156	GLN
1	O	159	GLN
1	O	180	GLN
1	O	187	GLN
1	P	29	ASN
1	P	54	GLN
1	P	113	ASN
1	P	135	GLN
1	P	156	GLN
1	P	159	GLN
1	P	180	GLN

Continued on next page...

Continued from previous page...

Mol	Chain	Res	Type
1	P	187	GLN

5.3.3 RNA ⓘ

There are no RNA molecules in this entry.

5.4 Non-standard residues in protein, DNA, RNA chains ⓘ

There are no non-standard protein/DNA/RNA residues in this entry.

5.5 Carbohydrates ⓘ

There are no carbohydrates in this entry.

5.6 Ligand geometry ⓘ

32 ligands are modelled in this entry.

In the following table, the Counts columns list the number of bonds (or angles) for which Mogul statistics could be retrieved, the number of bonds (or angles) that are observed in the model and the number of bonds (or angles) that are defined in the Chemical Component Dictionary. The Link column lists molecule types, if any, to which the group is linked. The Z score for a bond length (or angle) is the number of standard deviations the observed value is removed from the expected value. A bond length (or angle) with $|Z| > 2$ is considered an outlier worth inspection. RMSZ is the root-mean-square of all Z scores of the bond lengths (or angles).

Mol	Type	Chain	Res	Link	Bond lengths			Bond angles		
					Counts	RMSZ	# $ Z > 2$	Counts	RMSZ	# $ Z > 2$
2	ADP	A	301	-	25,29,29	0.91	1 (4%)	24,45,45	1.91	1 (4%)
3	TIZ	A	302	-	15,18,18	0.64	0	16,26,26	2.28	4 (25%)
2	ADP	B	301	-	25,29,29	0.89	0	24,45,45	1.88	3 (12%)
3	TIZ	B	302	-	15,18,18	0.64	0	16,26,26	2.10	3 (18%)
2	ADP	C	301	-	25,29,29	0.91	1 (4%)	24,45,45	1.87	3 (12%)
3	TIZ	C	302	-	15,18,18	0.65	0	16,26,26	2.24	2 (12%)
2	ADP	D	301	-	25,29,29	0.92	1 (4%)	24,45,45	1.94	3 (12%)
3	TIZ	D	302	-	15,18,18	0.63	0	16,26,26	2.15	4 (25%)
2	ADP	E	301	-	25,29,29	0.91	1 (4%)	24,45,45	1.93	1 (4%)
3	TIZ	E	302	-	15,18,18	0.64	0	16,26,26	2.10	4 (25%)

Mol	Type	Chain	Res	Link	Bond lengths			Bond angles		
					Counts	RMSZ	# Z > 2	Counts	RMSZ	# Z > 2
2	ADP	F	301	-	25,29,29	0.91	1 (4%)	24,45,45	1.78	1 (4%)
3	TIZ	F	302	-	15,18,18	0.63	0	16,26,26	2.27	2 (12%)
2	ADP	G	301	-	25,29,29	0.89	1 (4%)	24,45,45	1.86	3 (12%)
3	TIZ	G	302	-	15,18,18	0.63	0	16,26,26	2.25	3 (18%)
2	ADP	H	301	-	25,29,29	0.91	1 (4%)	24,45,45	1.91	2 (8%)
3	TIZ	H	302	-	15,18,18	0.64	0	16,26,26	2.23	4 (25%)
2	ADP	I	301	-	25,29,29	0.91	1 (4%)	24,45,45	1.90	1 (4%)
3	TIZ	I	302	-	15,18,18	0.63	0	16,26,26	2.14	4 (25%)
2	ADP	J	301	-	25,29,29	0.91	1 (4%)	24,45,45	1.77	2 (8%)
3	TIZ	J	302	-	15,18,18	0.66	0	16,26,26	2.12	4 (25%)
2	ADP	K	301	-	25,29,29	0.92	1 (4%)	24,45,45	1.84	1 (4%)
3	TIZ	K	302	-	15,18,18	0.63	0	16,26,26	2.30	3 (18%)
2	ADP	L	301	-	25,29,29	0.91	1 (4%)	24,45,45	1.90	2 (8%)
3	TIZ	L	302	-	15,18,18	0.65	0	16,26,26	2.30	4 (25%)
2	ADP	M	301	-	25,29,29	0.90	1 (4%)	24,45,45	1.91	1 (4%)
3	TIZ	M	302	-	15,18,18	0.65	0	16,26,26	2.27	2 (12%)
2	ADP	N	301	-	25,29,29	0.92	1 (4%)	24,45,45	1.87	2 (8%)
3	TIZ	N	302	-	15,18,18	0.63	0	16,26,26	2.10	3 (18%)
2	ADP	O	301	-	25,29,29	0.91	1 (4%)	24,45,45	1.91	2 (8%)
3	TIZ	O	302	-	15,18,18	0.61	0	16,26,26	2.10	3 (18%)
2	ADP	P	301	-	25,29,29	0.88	1 (4%)	24,45,45	1.90	2 (8%)
3	TIZ	P	302	-	15,18,18	0.66	0	16,26,26	2.21	4 (25%)

In the following table, the Chirals column lists the number of chiral outliers, the number of chiral centers analysed, the number of these observed in the model and the number defined in the Chemical Component Dictionary. Similar counts are reported in the Torsion and Rings columns. '-' means no outliers of that kind were identified.

Mol	Type	Chain	Res	Link	Chirals	Torsions	Rings
2	ADP	A	301	-	-	0/12/32/32	0/3/3/3
3	TIZ	A	302	-	-	0/2/26/26	0/2/2/2
2	ADP	B	301	-	-	0/12/32/32	0/3/3/3
3	TIZ	B	302	-	-	0/2/26/26	0/2/2/2
2	ADP	C	301	-	-	0/12/32/32	0/3/3/3
3	TIZ	C	302	-	-	0/2/26/26	0/2/2/2
2	ADP	D	301	-	-	0/12/32/32	0/3/3/3
3	TIZ	D	302	-	-	0/2/26/26	0/2/2/2

Continued on next page...

Continued from previous page...

Mol	Type	Chain	Res	Link	Chirals	Torsions	Rings
2	ADP	E	301	-	-	0/12/32/32	0/3/3/3
3	TIZ	E	302	-	-	0/2/26/26	0/2/2/2
2	ADP	F	301	-	-	0/12/32/32	0/3/3/3
3	TIZ	F	302	-	-	0/2/26/26	0/2/2/2
2	ADP	G	301	-	-	0/12/32/32	0/3/3/3
3	TIZ	G	302	-	-	0/2/26/26	0/2/2/2
2	ADP	H	301	-	-	0/12/32/32	0/3/3/3
3	TIZ	H	302	-	-	0/2/26/26	0/2/2/2
2	ADP	I	301	-	-	0/12/32/32	0/3/3/3
3	TIZ	I	302	-	-	0/2/26/26	0/2/2/2
2	ADP	J	301	-	-	0/12/32/32	0/3/3/3
3	TIZ	J	302	-	-	0/2/26/26	0/2/2/2
2	ADP	K	301	-	-	0/12/32/32	0/3/3/3
3	TIZ	K	302	-	-	0/2/26/26	0/2/2/2
2	ADP	L	301	-	-	0/12/32/32	0/3/3/3
3	TIZ	L	302	-	-	0/2/26/26	0/2/2/2
2	ADP	M	301	-	-	0/12/32/32	0/3/3/3
3	TIZ	M	302	-	-	0/2/26/26	0/2/2/2
2	ADP	N	301	-	-	0/12/32/32	0/3/3/3
3	TIZ	N	302	-	-	0/2/26/26	0/2/2/2
2	ADP	O	301	-	-	0/12/32/32	0/3/3/3
3	TIZ	O	302	-	-	0/2/26/26	0/2/2/2
2	ADP	P	301	-	-	0/12/32/32	0/3/3/3
3	TIZ	P	302	-	-	0/2/26/26	0/2/2/2

All (15) bond length outliers are listed below:

Mol	Chain	Res	Type	Atoms	Z	Observed(Å)	Ideal(Å)
2	G	301	ADP	O4'-C1'	2.01	1.44	1.41
2	P	301	ADP	O4'-C1'	2.04	1.44	1.41
2	M	301	ADP	O4'-C1'	2.15	1.44	1.41
2	H	301	ADP	O4'-C1'	2.16	1.44	1.41
2	F	301	ADP	O4'-C1'	2.17	1.44	1.41
2	O	301	ADP	O4'-C1'	2.17	1.44	1.41
2	L	301	ADP	O4'-C1'	2.19	1.44	1.41
2	K	301	ADP	O4'-C1'	2.23	1.44	1.41
2	C	301	ADP	O4'-C1'	2.26	1.44	1.41
2	E	301	ADP	O4'-C1'	2.27	1.44	1.41
2	D	301	ADP	O4'-C1'	2.28	1.44	1.41
2	I	301	ADP	O4'-C1'	2.29	1.44	1.41
2	N	301	ADP	O4'-C1'	2.32	1.44	1.41
2	A	301	ADP	O4'-C1'	2.33	1.44	1.41

Continued on next page...

Continued from previous page...

Mol	Chain	Res	Type	Atoms	Z	Observed(Å)	Ideal(Å)
2	J	301	ADP	O4'-C1'	2.33	1.44	1.41

All (83) bond angle outliers are listed below:

Mol	Chain	Res	Type	Atoms	Z	Observed(°)	Ideal(°)
2	E	301	ADP	N3-C2-N1	-8.32	121.61	128.86
2	O	301	ADP	N3-C2-N1	-8.24	121.68	128.86
2	H	301	ADP	N3-C2-N1	-8.24	121.68	128.86
2	D	301	ADP	N3-C2-N1	-8.21	121.70	128.86
2	M	301	ADP	N3-C2-N1	-8.19	121.72	128.86
2	L	301	ADP	N3-C2-N1	-8.19	121.72	128.86
2	A	301	ADP	N3-C2-N1	-8.13	121.78	128.86
2	N	301	ADP	N3-C2-N1	-8.13	121.78	128.86
2	P	301	ADP	N3-C2-N1	-8.06	121.84	128.86
2	I	301	ADP	N3-C2-N1	-8.02	121.87	128.86
2	K	301	ADP	N3-C2-N1	-7.99	121.90	128.86
2	B	301	ADP	N3-C2-N1	-7.97	121.92	128.86
2	C	301	ADP	N3-C2-N1	-7.91	121.97	128.86
2	G	301	ADP	N3-C2-N1	-7.84	122.03	128.86
2	F	301	ADP	N3-C2-N1	-7.67	122.18	128.86
2	J	301	ADP	N3-C2-N1	-7.63	122.22	128.86
3	F	302	TIZ	C4'-O4'-C1'	-7.45	100.85	109.48
3	C	302	TIZ	C4'-O4'-C1'	-7.28	101.05	109.48
3	K	302	TIZ	C4'-O4'-C1'	-7.19	101.15	109.48
3	M	302	TIZ	C4'-O4'-C1'	-7.14	101.20	109.48
3	A	302	TIZ	C4'-O4'-C1'	-6.93	101.45	109.48
3	L	302	TIZ	C4'-O4'-C1'	-6.82	101.58	109.48
3	H	302	TIZ	C4'-O4'-C1'	-6.57	101.87	109.48
3	G	302	TIZ	C4'-O4'-C1'	-6.48	101.98	109.48
3	J	302	TIZ	C4'-O4'-C1'	-6.35	102.12	109.48
3	P	302	TIZ	C4'-O4'-C1'	-6.22	102.27	109.48
3	I	302	TIZ	C4'-O4'-C1'	-6.15	102.36	109.48
3	N	302	TIZ	C4'-O4'-C1'	-6.09	102.43	109.48
3	O	302	TIZ	C4'-O4'-C1'	-6.06	102.46	109.48
3	B	302	TIZ	C4'-O4'-C1'	-6.05	102.47	109.48
3	D	302	TIZ	C4'-O4'-C1'	-6.02	102.50	109.48
3	E	302	TIZ	C4'-O4'-C1'	-5.90	102.65	109.48
3	D	302	TIZ	C1L-C1F-S1J	-4.47	106.30	111.79
3	M	302	TIZ	C1L-C1F-S1J	-4.38	106.41	111.79
3	G	302	TIZ	C1L-C1F-S1J	-4.29	106.52	111.79
3	A	302	TIZ	C1L-C1F-S1J	-4.29	106.52	111.79
3	O	302	TIZ	C1L-C1F-S1J	-4.24	106.58	111.79

Continued on next page...

Continued from previous page...

Mol	Chain	Res	Type	Atoms	Z	Observed(°)	Ideal(°)
3	L	302	TIZ	C1L-C1F-S1J	-4.24	106.58	111.79
3	H	302	TIZ	C1L-C1F-S1J	-4.22	106.61	111.79
3	B	302	TIZ	C1L-C1F-S1J	-4.20	106.64	111.79
3	P	302	TIZ	C1L-C1F-S1J	-4.17	106.66	111.79
3	I	302	TIZ	C1L-C1F-S1J	-4.16	106.68	111.79
3	N	302	TIZ	C1L-C1F-S1J	-4.05	106.82	111.79
3	K	302	TIZ	C1L-C1F-S1J	-4.02	106.85	111.79
3	J	302	TIZ	C1L-C1F-S1J	-3.96	106.93	111.79
3	C	302	TIZ	C1L-C1F-S1J	-3.95	106.94	111.79
3	E	302	TIZ	C1L-C1F-S1J	-3.84	107.07	111.79
3	F	302	TIZ	C1L-C1F-S1J	-3.75	107.18	111.79
3	G	302	TIZ	C5'-C4'-C3'	-3.02	107.76	115.05
3	P	302	TIZ	C5'-C4'-C3'	-2.86	108.14	115.05
3	E	302	TIZ	C5'-C4'-C3'	-2.84	108.20	115.05
3	B	302	TIZ	C5'-C4'-C3'	-2.72	108.48	115.05
3	D	302	TIZ	C5'-C4'-C3'	-2.65	108.65	115.05
3	H	302	TIZ	C5'-C4'-C3'	-2.64	108.67	115.05
3	O	302	TIZ	C5'-C4'-C3'	-2.58	108.80	115.05
3	N	302	TIZ	C5'-C4'-C3'	-2.57	108.84	115.05
3	I	302	TIZ	C5'-C4'-C3'	-2.49	109.03	115.05
2	G	301	ADP	C4'-O4'-C1'	-2.34	107.28	109.77
2	D	301	ADP	C4'-O4'-C1'	-2.31	107.31	109.77
3	J	302	TIZ	C5'-C4'-C3'	-2.28	109.54	115.05
3	K	302	TIZ	C5'-C4'-C3'	-2.26	109.59	115.05
3	I	302	TIZ	O4'-C1'-C2'	-2.24	100.86	104.45
2	C	301	ADP	C4-C5-N7	-2.24	107.25	109.41
2	N	301	ADP	C4-C5-N7	-2.23	107.25	109.41
2	B	301	ADP	C4-C5-N7	-2.22	107.26	109.41
2	P	301	ADP	C4-C5-N7	-2.22	107.27	109.41
3	L	302	TIZ	C5'-C4'-C3'	-2.20	109.73	115.05
2	B	301	ADP	C4'-O4'-C1'	-2.18	107.45	109.77
2	D	301	ADP	C4-C5-N7	-2.16	107.32	109.41
2	J	301	ADP	C4-C5-N7	-2.14	107.35	109.41
2	H	301	ADP	C4-C5-N7	-2.09	107.39	109.41
2	L	301	ADP	C4-C5-N7	-2.08	107.40	109.41
2	G	301	ADP	C4-C5-N7	-2.07	107.41	109.41
3	A	302	TIZ	C5'-C4'-C3'	-2.05	110.08	115.05
2	C	301	ADP	C4'-O4'-C1'	-2.01	107.63	109.77
2	O	301	ADP	C4'-O4'-C1'	-2.00	107.64	109.77
3	D	302	TIZ	O1B-C1K-C1L	2.05	121.39	119.65
3	A	302	TIZ	O1B-C1K-C1L	2.12	121.45	119.65
3	H	302	TIZ	O1B-C1K-C1L	2.19	121.51	119.65

Continued on next page...

Continued from previous page...

Mol	Chain	Res	Type	Atoms	Z	Observed(°)	Ideal(°)
3	J	302	TIZ	O1B-C1K-C1L	2.31	121.61	119.65
3	E	302	TIZ	O1B-C1K-C1L	2.49	121.77	119.65
3	P	302	TIZ	O1B-C1K-C1L	2.56	121.83	119.65
3	L	302	TIZ	O1B-C1K-C1L	2.60	121.86	119.65

There are no chirality outliers.

There are no torsion outliers.

There are no ring outliers.

9 monomers are involved in 9 short contacts:

Mol	Chain	Res	Type	Clashes	Symm-Clashes
2	A	301	ADP	1	0
2	C	301	ADP	1	0
2	D	301	ADP	1	0
2	E	301	ADP	1	0
2	F	301	ADP	1	0
3	F	302	TIZ	1	0
2	H	301	ADP	1	0
2	I	301	ADP	1	0
3	I	302	TIZ	1	0

5.7 Other polymers [i](#)

There are no such residues in this entry.

5.8 Polymer linkage issues [i](#)

There are no chain breaks in this entry.

6 Fit of model and data ⓘ

6.1 Protein, DNA and RNA chains ⓘ

In the following table, the column labelled ‘#RSRZ> 2’ contains the number (and percentage) of RSRZ outliers, followed by percent RSRZ outliers for the chain as percentile scores relative to all X-ray entries and entries of similar resolution. The OWAB column contains the minimum, median, 95th percentile and maximum values of the occupancy-weighted average B-factor per residue. The column labelled ‘Q< 0.9’ lists the number of (and percentage) of residues with an average occupancy less than 0.9.

Mol	Chain	Analysed	<RSRZ>	#RSRZ>2	OWAB(Å ²)	Q<0.9
1	A	173/199 (86%)	0.55	7 (4%) 39 37	22, 22, 22, 22	0
1	B	173/199 (86%)	0.40	2 (1%) 79 80	22, 22, 22, 22	0
1	C	173/199 (86%)	0.58	7 (4%) 39 37	22, 22, 22, 22	0
1	D	173/199 (86%)	0.42	4 (2%) 61 61	22, 22, 22, 22	0
1	E	173/199 (86%)	0.54	6 (3%) 44 44	22, 22, 22, 22	0
1	F	173/199 (86%)	0.63	14 (8%) 13 10	22, 22, 22, 22	0
1	G	173/199 (86%)	0.55	9 (5%) 28 26	22, 22, 22, 22	0
1	H	173/199 (86%)	0.60	8 (4%) 33 31	22, 22, 22, 22	0
1	I	173/199 (86%)	0.52	5 (2%) 52 52	22, 22, 22, 22	0
1	J	173/199 (86%)	0.50	4 (2%) 61 61	22, 22, 22, 22	0
1	K	173/199 (86%)	0.44	4 (2%) 61 61	22, 22, 22, 22	0
1	L	173/199 (86%)	0.42	4 (2%) 61 61	22, 22, 22, 22	0
1	M	173/199 (86%)	0.36	2 (1%) 79 80	22, 22, 22, 22	0
1	N	173/199 (86%)	0.55	2 (1%) 79 80	22, 22, 22, 22	0
1	O	173/199 (86%)	0.58	7 (4%) 39 37	22, 22, 22, 22	0
1	P	173/199 (86%)	0.52	7 (4%) 39 37	22, 22, 22, 22	0
All	All	2768/3184 (86%)	0.51	92 (3%) 47 46	22, 22, 22, 22	0

All (92) RSRZ outliers are listed below:

Mol	Chain	Res	Type	RSRZ
1	A	190	ALA	4.7
1	I	190	ALA	4.5
1	H	51	GLY	4.0
1	H	192	GLN	3.8
1	L	190	ALA	3.8

Continued on next page...

Continued from previous page...

Mol	Chain	Res	Type	RSRZ
1	P	190	ALA	3.8
1	C	162	THR	3.8
1	I	78	ARG	3.7
1	F	140	PRO	3.4
1	C	192	GLN	3.3
1	M	192	GLN	3.3
1	F	79	HIS	3.2
1	F	47	THR	3.2
1	C	78	ARG	3.1
1	O	79	HIS	3.0
1	E	78	ARG	3.0
1	D	79	HIS	3.0
1	B	77	ALA	3.0
1	F	60	ALA	2.9
1	E	189	LEU	2.9
1	K	192	GLN	2.8
1	K	191	LYS	2.8
1	G	79	HIS	2.8
1	F	77	ALA	2.8
1	P	77	ALA	2.8
1	P	79	HIS	2.7
1	C	156	GLN	2.7
1	H	189	LEU	2.7
1	O	190	ALA	2.7
1	G	77	ALA	2.7
1	H	190	ALA	2.7
1	F	162	THR	2.7
1	C	190	ALA	2.7
1	H	78	ARG	2.7
1	A	191	LYS	2.7
1	K	77	ALA	2.6
1	G	120	ILE	2.6
1	C	161	ILE	2.5
1	L	159	GLN	2.5
1	H	156	GLN	2.5
1	O	173	SER	2.5
1	B	79	HIS	2.5
1	J	79	HIS	2.5
1	O	51	GLY	2.5
1	F	78	ARG	2.4
1	A	79	HIS	2.4
1	N	77	ALA	2.4

Continued on next page...

Continued from previous page...

Mol	Chain	Res	Type	RSRZ
1	E	121	PRO	2.4
1	P	78	ARG	2.4
1	J	99	GLY	2.4
1	G	78	ARG	2.4
1	O	49	LYS	2.4
1	P	191	LYS	2.4
1	P	192	GLN	2.3
1	G	171	THR	2.3
1	A	51	GLY	2.3
1	E	32	VAL	2.3
1	A	159	GLN	2.3
1	K	50	ASN	2.3
1	G	187	GLN	2.3
1	H	159	GLN	2.3
1	M	79	HIS	2.3
1	J	33	ILE	2.2
1	D	78	ARG	2.2
1	P	54	GLN	2.2
1	E	173	SER	2.2
1	H	72	CYS	2.2
1	I	99	GLY	2.2
1	O	11	VAL	2.2
1	D	192	GLN	2.2
1	F	43	SER	2.2
1	F	101	LEU	2.2
1	N	51	GLY	2.2
1	I	101	LEU	2.1
1	L	189	LEU	2.1
1	D	190	ALA	2.1
1	C	29	ASN	2.1
1	F	187	GLN	2.1
1	G	29	ASN	2.1
1	F	133	VAL	2.1
1	G	191	LYS	2.1
1	G	161	ILE	2.1
1	A	78	ARG	2.1
1	F	51	GLY	2.1
1	O	65	LYS	2.0
1	F	159	GLN	2.0
1	I	79	HIS	2.0
1	A	43	SER	2.0
1	F	141	GLY	2.0

Continued on next page...

Continued from previous page...

Mol	Chain	Res	Type	RSRZ
1	L	78	ARG	2.0
1	J	142	TYR	2.0
1	E	79	HIS	2.0

6.2 Non-standard residues in protein, DNA, RNA chains [i](#)

There are no non-standard protein/DNA/RNA residues in this entry.

6.3 Carbohydrates [i](#)

There are no carbohydrates in this entry.

6.4 Ligands [i](#)

In the following table, the Atoms column lists the number of modelled atoms in the group and the number defined in the chemical component dictionary. LLDF column lists the quality of electron density of the group with respect to its neighbouring residues in protein, DNA or RNA chains. The B-factors column lists the minimum, median, 95th percentile and maximum values of B factors of atoms in the group. The column labelled 'Q< 0.9' lists the number of atoms with occupancy less than 0.9.

Mol	Type	Chain	Res	Atoms	RSCC	RSR	LLDF	B-factors(Å ²)	Q<0.9
3	TIZ	N	302	17/17	0.87	0.27	2.13	16,16,16,16	0
3	TIZ	M	302	17/17	0.86	0.24	1.69	16,16,16,16	0
3	TIZ	K	302	17/17	0.87	0.26	1.55	16,16,16,16	0
3	TIZ	C	302	17/17	0.84	0.27	1.50	16,16,16,16	0
3	TIZ	H	302	17/17	0.82	0.26	1.43	16,16,16,16	0
3	TIZ	F	302	17/17	0.89	0.22	1.06	16,16,16,16	0
3	TIZ	G	302	17/17	0.83	0.22	1.02	16,16,16,16	0
3	TIZ	B	302	17/17	0.87	0.25	0.95	16,16,16,16	0
3	TIZ	D	302	17/17	0.85	0.23	0.75	16,16,16,16	0
3	TIZ	A	302	17/17	0.77	0.23	0.57	16,16,16,16	0
3	TIZ	E	302	17/17	0.88	0.22	0.24	16,16,16,16	0
2	ADP	H	301	27/27	0.91	0.22	0.11	16,16,16,16	0
3	TIZ	P	302	17/17	0.90	0.20	0.11	16,16,16,16	0
3	TIZ	O	302	17/17	0.83	0.24	0.06	16,16,16,16	0
2	ADP	O	301	27/27	0.92	0.21	-0.24	16,16,16,16	0
3	TIZ	L	302	17/17	0.89	0.20	-0.61	16,16,16,16	0
2	ADP	E	301	27/27	0.91	0.19	-0.66	16,16,16,16	0
2	ADP	K	301	27/27	0.94	0.17	-0.72	16,16,16,16	0

Continued on next page...

Continued from previous page...

Mol	Type	Chain	Res	Atoms	RSCC	RSR	LLDF	B-factors(\AA^2)	Q<0.9
2	ADP	P	301	27/27	0.92	0.17	-0.75	16,16,16,16	0
2	ADP	J	301	27/27	0.93	0.18	-0.81	16,16,16,16	0
2	ADP	A	301	27/27	0.92	0.17	-0.81	16,16,16,16	0
2	ADP	C	301	27/27	0.93	0.18	-0.84	16,16,16,16	0
2	ADP	N	301	27/27	0.89	0.18	-0.85	16,16,16,16	0
2	ADP	G	301	27/27	0.94	0.17	-0.85	16,16,16,16	0
2	ADP	D	301	27/27	0.93	0.17	-0.96	16,16,16,16	0
2	ADP	I	301	27/27	0.95	0.17	-1.08	16,16,16,16	0
2	ADP	B	301	27/27	0.95	0.16	-1.11	16,16,16,16	0
3	TIZ	J	302	17/17	0.90	0.16	-1.16	16,16,16,16	0
2	ADP	F	301	27/27	0.92	0.16	-1.22	16,16,16,16	0
2	ADP	M	301	27/27	0.94	0.16	-1.34	16,16,16,16	0
2	ADP	L	301	27/27	0.93	0.15	-1.42	16,16,16,16	0
3	TIZ	I	302	17/17	0.90	0.18	-1.45	16,16,16,16	0

6.5 Other polymers [i](#)

There are no such residues in this entry.