



Full wwPDB X-ray Structure Validation Report ⓘ

Oct 15, 2017 – 07:36 AM EDT

PDB ID : 2QMZ
Title : Quinone Reductase 2 in Complex with Dopamine
Authors : Fu, Y.; Buryanovskyy, L.; Zhang, Z.
Deposited on : unknown
Resolution : 2.10 Å(reported)

This is a Full wwPDB X-ray Structure Validation Report for a publicly released PDB entry.

We welcome your comments at validation@mail.wwpdb.org

A user guide is available at

<http://wwpdb.org/validation/2016/XrayValidationReportHelp>

with specific help available everywhere you see the ⓘ symbol.

The following versions of software and data (see [references ⓘ](#)) were used in the production of this report:

MolProbity : 4.02b-467
Mogul : 1.7.2 (RC1), CSD as538be (2017)
Xtriage (Phenix) : 1.9-1692
EDS : rb-20030345
Percentile statistics : 20161228.v01 (using entries in the PDB archive December 28th 2016)
Refmac : 5.8.0135
CCP4 : 6.5.0
Ideal geometry (proteins) : Engh & Huber (2001)
Ideal geometry (DNA, RNA) : Parkinson et al. (1996)
Validation Pipeline (wwPDB-VP) : rb-20030345

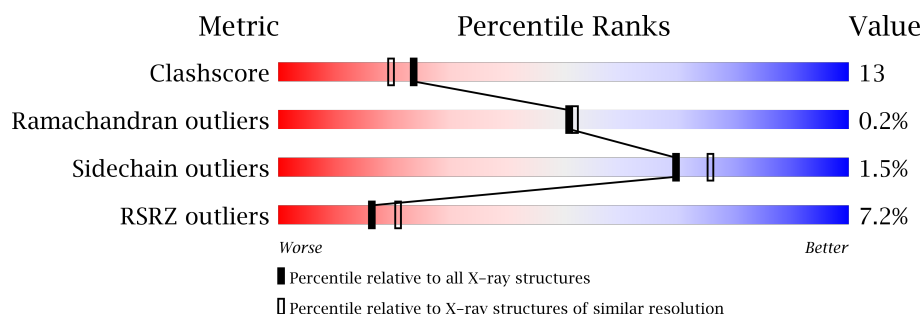
1 Overall quality at a glance

The following experimental techniques were used to determine the structure:

X-RAY DIFFRACTION

The reported resolution of this entry is 2.10 Å.

Percentile scores (ranging between 0-100) for global validation metrics of the entry are shown in the following graphic. The table shows the number of entries on which the scores are based.



Metric	Whole archive (#Entries)	Similar resolution (#Entries, resolution range(Å))
Clashscore	112137	4788 (2.10-2.10)
Ramachandran outliers	110173	4740 (2.10-2.10)
Sidechain outliers	110143	4741 (2.10-2.10)
RSRZ outliers	101464	4275 (2.10-2.10)

The table below summarises the geometric issues observed across the polymeric chains and their fit to the electron density. The red, orange, yellow and green segments on the lower bar indicate the fraction of residues that contain outliers for ≥ 3 , 2, 1 and 0 types of geometric quality criteria. A grey segment represents the fraction of residues that are not modelled. The numeric value for each fraction is indicated below the corresponding segment, with a dot representing fractions $\leq 5\%$. The upper red bar (where present) indicates the fraction of residues that have poor fit to the electron density. The numeric value is given above the bar.

Mol	Chain	Length	Quality of chain
1	A	230	<div> <div>9%</div> <div>73%</div> <div>26%</div> </div>
1	B	230	<div> <div>6%</div> <div>79%</div> <div>20%</div> </div>

The following table lists non-polymeric compounds, carbohydrate monomers and non-standard residues in protein, DNA, RNA chains that are outliers for geometric or electron-density-fit criteria:

Mol	Type	Chain	Res	Chirality	Geometry	Clashes	Electron density
4	LDP	A	501[A]	-	-	-	X
4	LDP	A	501[B]	-	-	-	X

Continued on next page...

Continued from previous page...

Mol	Type	Chain	Res	Chirality	Geometry	Clashes	Electron density
4	LDP	B	502[A]	-	-	-	X
4	LDP	B	502[B]	-	-	-	X

2 Entry composition [i](#)

There are 5 unique types of molecules in this entry. The entry contains 4146 atoms, of which 0 are hydrogens and 0 are deuteriums.

In the tables below, the ZeroOcc column contains the number of atoms modelled with zero occupancy, the AltConf column contains the number of residues with at least one atom in alternate conformation and the Trace column contains the number of residues modelled with at most 2 atoms.

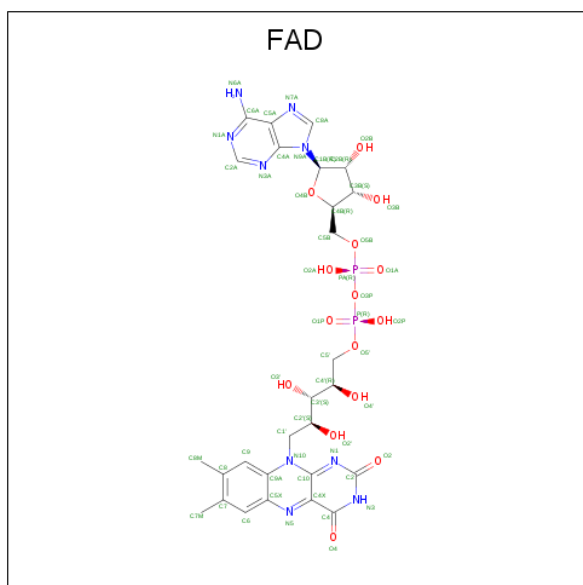
- Molecule 1 is a protein called Ribosyldihyronicotinamide dehydrogenase.

Mol	Chain	Residues	Atoms					ZeroOcc	AltConf	Trace
1	A	230	Total	C	N	O	S	0	0	0
			1824	1174	304	338	8			
1	B	230	Total	C	N	O	S	0	0	0
			1824	1174	304	338	8			

- Molecule 2 is ZINC ION (three-letter code: ZN) (formula: Zn).

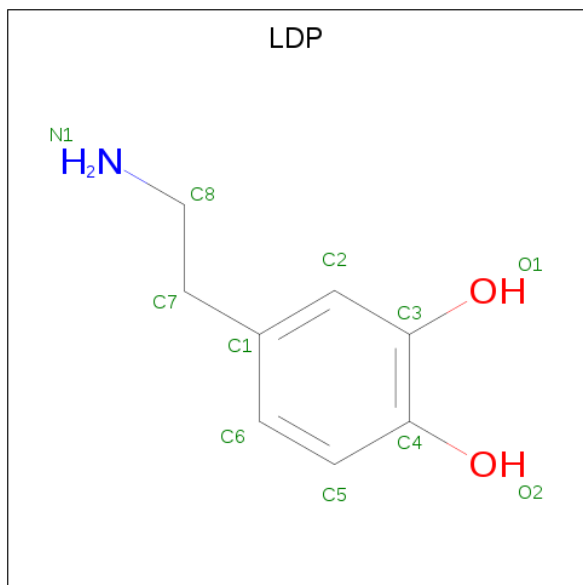
Mol	Chain	Residues	Atoms		ZeroOcc	AltConf
2	B	1	Total	Zn	0	0
			1	1		
2	A	1	Total	Zn	0	0
			1	1		

- Molecule 3 is FLAVIN-ADENINE DINUCLEOTIDE (three-letter code: FAD) (formula: $C_{27}H_{33}N_9O_{15}P_2$).



Mol	Chain	Residues	Atoms					ZeroOcc	AltConf
3	A	1	Total	C	N	O	P	0	0
			53	27	9	15	2		
3	B	1	Total	C	N	O	P	0	0
			53	27	9	15	2		

- Molecule 4 is L-DOPAMINE (three-letter code: LDP) (formula: $C_8H_{11}NO_2$).



Mol	Chain	Residues	Atoms				ZeroOcc	AltConf
4	A	1	Total	C	N	O	0	1
			22	16	2	4		
4	B	1	Total	C	N	O	0	1
			22	16	2	4		

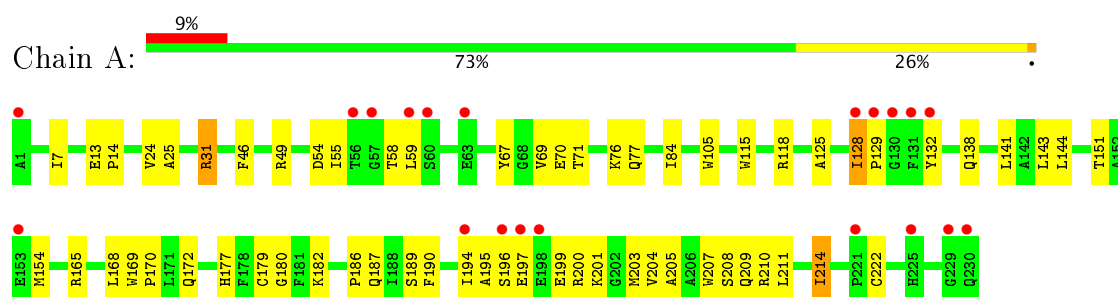
- Molecule 5 is water.

Mol	Chain	Residues	Atoms		ZeroOcc	AltConf
5	A	154	Total	O	0	0
			154	154		
5	B	192	Total	O	0	0
			192	192		

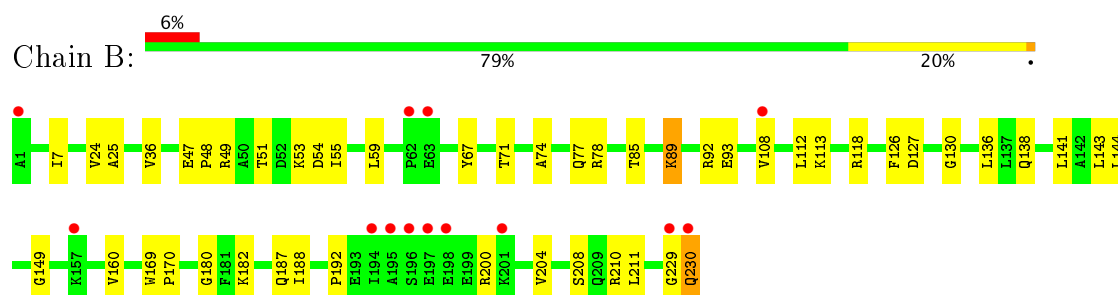
3 Residue-property plots

These plots are drawn for all protein, RNA and DNA chains in the entry. The first graphic for a chain summarises the proportions of the various outlier classes displayed in the second graphic. The second graphic shows the sequence view annotated by issues in geometry and electron density. Residues are color-coded according to the number of geometric quality criteria for which they contain at least one outlier: green = 0, yellow = 1, orange = 2 and red = 3 or more. A red dot above a residue indicates a poor fit to the electron density ($RSRZ > 2$). Stretches of 2 or more consecutive residues without any outlier are shown as a green connector. Residues present in the sample, but not in the model, are shown in grey.

- Molecule 1: Ribosyldihydronicotinamide dehydrogenase



- Molecule 1: Ribosyldihydronicotinamide dehydrogenase



4 Data and refinement statistics

Property	Value	Source
Space group	P 21 21 21	Depositor
Cell constants a, b, c, α , β , γ	83.44Å 106.45Å 56.53Å 90.00° 90.00° 90.00°	Depositor
Resolution (Å)	50.00 – 2.10 33.57 – 2.10	Depositor EDS
% Data completeness (in resolution range)	93.6 (50.00-2.10) 93.4 (33.57-2.10)	Depositor EDS
R_{merge}	0.10	Depositor
R_{sym}	(Not available)	Depositor
$\langle I/\sigma(I) \rangle$ ¹	4.94 (at 2.10Å)	Xtriage
Refinement program	CNS	Depositor
R, R_{free}	0.193 , 0.238 0.204 , (Not available)	Depositor DCC
R_{free} test set	No test flags present.	DCC
Wilson B-factor (Å ²)	18.2	Xtriage
Anisotropy	0.574	Xtriage
Bulk solvent k_{sol} (e/Å ³), B_{sol} (Å ²)	0.37 , 62.0	EDS
L-test for twinning ²	$\langle L \rangle = 0.48$, $\langle L^2 \rangle = 0.31$	Xtriage
Estimated twinning fraction	No twinning to report.	Xtriage
F_o, F_c correlation	0.94	EDS
Total number of atoms	4146	wwPDB-VP
Average B, all atoms (Å ²)	23.0	wwPDB-VP

Xtriage's analysis on translational NCS is as follows: *The largest off-origin peak in the Patterson function is 5.37% of the height of the origin peak. No significant pseudotranslation is detected.*

¹Intensities estimated from amplitudes.

²Theoretical values of $\langle |L| \rangle$, $\langle L^2 \rangle$ for acentric reflections are 0.5, 0.333 respectively for untwinned datasets, and 0.375, 0.2 for perfectly twinned datasets.

5 Model quality

5.1 Standard geometry

Bond lengths and bond angles in the following residue types are not validated in this section: ZN, LDP, FAD

The Z score for a bond length (or angle) is the number of standard deviations the observed value is removed from the expected value. A bond length (or angle) with $|Z| > 5$ is considered an outlier worth inspection. RMSZ is the root-mean-square of all Z scores of the bond lengths (or angles).

Mol	Chain	Bond lengths		Bond angles	
		RMSZ	$\# Z > 5$	RMSZ	$\# Z > 5$
1	A	0.33	0/1874	0.58	0/2542
1	B	0.35	0/1874	0.59	0/2542
All	All	0.34	0/3748	0.59	0/5084

There are no bond length outliers.

There are no bond angle outliers.

There are no chirality outliers.

There are no planarity outliers.

5.2 Too-close contacts

In the following table, the Non-H and H(model) columns list the number of non-hydrogen atoms and hydrogen atoms in the chain respectively. The H(added) column lists the number of hydrogen atoms added and optimized by MolProbity. The Clashes column lists the number of clashes within the asymmetric unit, whereas Symm-Clashes lists symmetry related clashes.

Mol	Chain	Non-H	H(model)	H(added)	Clashes	Symm-Clashes
1	A	1824	0	1779	55	0
1	B	1824	0	1779	38	0
2	A	1	0	0	0	0
2	B	1	0	0	0	0
3	A	53	0	31	0	0
3	B	53	0	31	0	0
4	A	22	0	20	2	0
4	B	22	0	20	3	0
5	A	154	0	0	5	0
5	B	192	0	0	6	0
All	All	4146	0	3660	94	0

The all-atom clashscore is defined as the number of clashes found per 1000 atoms (including hydrogen atoms). The all-atom clashscore for this structure is 13.

All (94) close contacts within the same asymmetric unit are listed below, sorted by their clash magnitude.

Atom-1	Atom-2	Interatomic distance (Å)	Clash overlap (Å)
1:A:128:ILE:HG23	1:A:129:PRO:HD3	1.40	1.04
1:A:31:ARG:HB3	1:A:31:ARG:HH11	1.27	0.99
1:A:177:HIS:HD2	1:A:222:CYS:HB3	1.49	0.76
1:B:24:VAL:HG13	1:B:208:SER:HB3	1.69	0.74
1:B:187:GLN:HE21	1:B:210:ARG:HH11	1.37	0.72
1:B:92:ARG:HD2	5:B:635:HOH:O	1.90	0.70
1:A:105:TRP:HB2	1:B:113:LYS:NZ	2.08	0.69
1:A:151:THR:H	1:A:154:MET:HE3	1.58	0.69
1:B:169:TRP:HB3	1:B:170:PRO:HD3	1.74	0.68
1:B:85:THR:O	1:B:89:LYS:HD2	1.95	0.66
1:A:169:TRP:HB3	1:A:170:PRO:HD3	1.78	0.66
1:A:31:ARG:HB3	1:A:31:ARG:NH1	2.07	0.65
1:A:197:GLU:O	1:A:201:LYS:HG2	1.99	0.63
1:A:59:LEU:HB3	1:A:70:GLU:OE2	1.98	0.63
1:B:7:ILE:HD12	1:B:7:ILE:N	2.15	0.62
1:A:77:GLN:HG3	5:A:622:HOH:O	1.99	0.61
1:A:194:ILE:HG12	5:A:601:HOH:O	2.01	0.61
1:B:49:ARG:O	1:B:118:ARG:HD3	2.01	0.60
1:A:187:GLN:HE21	1:A:210:ARG:HH11	1.48	0.60
1:A:205:ALA:O	1:A:209:GLN:HG3	2.02	0.60
1:A:69:VAL:HG13	5:A:631:HOH:O	2.01	0.60
1:B:149:GLY:HA3	4:B:502[B]:LDP:H71	1.84	0.59
1:A:172:GLN:HE22	1:A:186:PRO:HD3	1.67	0.59
1:A:199:GLU:O	1:A:203:MET:HG3	2.03	0.59
1:A:105:TRP:HB2	1:B:113:LYS:HZ2	1.68	0.58
1:A:7:ILE:N	1:A:7:ILE:HD12	2.22	0.55
1:B:36:VAL:HB	5:B:620:HOH:O	2.07	0.55
1:B:24:VAL:CG1	1:B:208:SER:HB3	2.36	0.55
1:B:182:LYS:HG3	5:B:622:HOH:O	2.07	0.54
1:B:192:PRO:O	1:B:200:ARG:HD3	2.08	0.54
1:A:201:LYS:O	1:A:204:VAL:HG22	2.09	0.53
1:A:128:ILE:CG2	1:A:129:PRO:HD3	2.27	0.53
1:A:84:ILE:HD11	1:A:118:ARG:CZ	2.37	0.53
1:A:13:GLU:OE2	1:A:14:PRO:HD2	2.09	0.53
1:B:187:GLN:NE2	1:B:210:ARG:HH11	2.05	0.52
1:A:24:VAL:CG1	1:A:208:SER:HB3	2.40	0.52
1:A:141:LEU:HD23	1:A:182:LYS:HB2	1.92	0.51

Continued on next page...

Continued from previous page...

Atom-1	Atom-2	Interatomic distance (Å)	Clash overlap (Å)
1:B:24:VAL:HG21	1:B:204:VAL:CG1	2.41	0.51
4:B:502[B]:LDP:H72	5:B:657:HOH:O	2.10	0.51
1:B:89:LYS:O	1:B:93:GLU:HG3	2.11	0.51
1:B:77:GLN:O	1:B:78:ARG:HB2	2.11	0.50
1:B:59:LEU:HD21	5:B:605:HOH:O	2.11	0.50
1:A:125:ALA:HB1	1:A:179:CYS:SG	2.52	0.49
1:B:188:ILE:HD12	1:B:188:ILE:N	2.27	0.49
1:A:195:ALA:HB2	5:A:607:HOH:O	2.12	0.49
1:B:55:ILE:HG23	1:B:74:ALA:HB2	1.94	0.49
1:A:196:SER:O	1:A:200:ARG:HG3	2.12	0.49
1:A:143:LEU:HD23	1:A:144:LEU:N	2.28	0.48
1:A:84:ILE:CD1	1:A:118:ARG:HB3	2.43	0.48
1:A:197:GLU:HA	1:A:200:ARG:HH11	1.77	0.48
1:A:132:TYR:HD1	1:A:177:HIS:ND1	2.12	0.48
1:A:84:ILE:HD11	1:A:118:ARG:HB3	1.94	0.47
1:A:165:ARG:HA	1:A:168:LEU:HD12	1.96	0.47
1:A:67:TYR:CZ	1:A:71:THR:HG21	2.49	0.47
1:A:54:ASP:OD2	1:A:118:ARG:HD2	2.14	0.47
1:A:207:TRP:O	1:A:211:LEU:HG	2.14	0.47
1:A:31:ARG:CB	1:A:31:ARG:HH11	2.13	0.47
1:A:189:SER:HA	1:A:203:MET:HE2	1.96	0.47
1:A:58:THR:HA	5:A:625:HOH:O	2.15	0.47
1:A:190:PHE:N	1:A:203:MET:HE1	2.29	0.47
1:B:54:ASP:OD2	1:B:118:ARG:HD2	2.15	0.47
1:B:25:ALA:HA	1:B:211:LEU:CD1	2.45	0.47
1:A:76:LYS:NZ	1:A:76:LYS:HB2	2.30	0.46
4:A:501[A]:LDP:H81	4:A:501[A]:LDP:H2	1.67	0.46
1:B:143:LEU:HD23	1:B:144:LEU:N	2.29	0.46
1:A:196:SER:OG	1:A:199:GLU:HG3	2.16	0.46
1:B:126:PHE:HA	1:B:136:LEU:HG	1.98	0.45
1:B:85:THR:HG21	5:B:516:HOH:O	2.16	0.45
1:B:200:ARG:O	1:B:204:VAL:HG23	2.17	0.45
1:B:51:THR:OG1	1:B:53:LYS:HE3	2.16	0.45
1:A:187:GLN:NE2	1:A:210:ARG:HH11	2.13	0.45
1:B:141:LEU:HD23	1:B:182:LYS:HB2	1.98	0.44
1:B:7:ILE:CD1	1:B:7:ILE:N	2.79	0.44
1:A:195:ALA:HB1	1:A:199:GLU:HB2	2.00	0.44
1:A:211:LEU:O	1:A:214:ILE:HG13	2.17	0.44
1:B:229:GLY:C	1:B:230:GLN:HG3	2.38	0.44
1:A:49:ARG:O	1:A:118:ARG:HD3	2.18	0.44
1:A:132:TYR:CE2	1:B:160:VAL:HG22	2.53	0.43

Continued on next page...

Continued from previous page...

Atom-1	Atom-2	Interatomic distance (Å)	Clash overlap (Å)
1:A:177:HIS:CD2	1:A:222:CYS:HB3	2.41	0.43
1:A:24:VAL:HG13	1:A:208:SER:HB3	2.00	0.43
1:A:151:THR:HG23	1:A:154:MET:HE3	2.01	0.42
4:B:502[A]:LDP:H81	4:B:502[A]:LDP:H2	1.67	0.42
1:A:55:ILE:N	1:A:55:ILE:HD12	2.34	0.42
1:B:230:GLN:HE21	1:B:230:GLN:C	2.23	0.42
1:A:46:PHE:CE2	1:A:115:TRP:HA	2.55	0.42
1:A:138:GLN:HA	1:A:180:GLY:O	2.20	0.42
1:B:108:VAL:HB	1:B:112:LEU:HD23	2.01	0.42
1:B:138:GLN:HA	1:B:180:GLY:O	2.20	0.41
1:B:143:LEU:C	1:B:143:LEU:HD23	2.41	0.41
1:B:47:GLU:HA	1:B:48:PRO:HD3	1.89	0.41
1:A:25:ALA:HA	1:A:211:LEU:CD1	2.51	0.41
1:A:151:THR:N	1:A:154:MET:HE3	2.33	0.41
4:A:501[B]:LDP:H82	4:A:501[B]:LDP:H6	1.84	0.40
1:B:67:TYR:CZ	1:B:71:THR:HG21	2.56	0.40

There are no symmetry-related clashes.

5.3 Torsion angles [i](#)

5.3.1 Protein backbone [i](#)

In the following table, the Percentiles column shows the percent Ramachandran outliers of the chain as a percentile score with respect to all X-ray entries followed by that with respect to entries of similar resolution.

The Analysed column shows the number of residues for which the backbone conformation was analysed, and the total number of residues.

Mol	Chain	Analysed	Favoured	Allowed	Outliers	Percentiles	
1	A	228/230 (99%)	215 (94%)	13 (6%)	0	100	100
1	B	228/230 (99%)	217 (95%)	10 (4%)	1 (0%)	38	35
All	All	456/460 (99%)	432 (95%)	23 (5%)	1 (0%)	51	52

All (1) Ramachandran outliers are listed below:

Mol	Chain	Res	Type
1	B	130	GLY

5.3.2 Protein sidechains ⓘ

In the following table, the Percentiles column shows the percent sidechain outliers of the chain as a percentile score with respect to all X-ray entries followed by that with respect to entries of similar resolution.

The Analysed column shows the number of residues for which the sidechain conformation was analysed, and the total number of residues.

Mol	Chain	Analysed	Rotameric	Outliers	Percentiles	
1	A	194/194 (100%)	191 (98%)	3 (2%)	70	76
1	B	194/194 (100%)	191 (98%)	3 (2%)	70	76
All	All	388/388 (100%)	382 (98%)	6 (2%)	70	76

All (6) residues with a non-rotameric sidechain are listed below:

Mol	Chain	Res	Type
1	A	31	ARG
1	A	128	ILE
1	A	214	ILE
1	B	89	LYS
1	B	127	ASP
1	B	230	GLN

Some sidechains can be flipped to improve hydrogen bonding and reduce clashes. All (8) such sidechains are listed below:

Mol	Chain	Res	Type
1	A	172	GLN
1	A	187	GLN
1	A	212	GLN
1	B	45	ASN
1	B	161	ASN
1	B	172	GLN
1	B	187	GLN
1	B	230	GLN

5.3.3 RNA ⓘ

There are no RNA molecules in this entry.

5.4 Non-standard residues in protein, DNA, RNA chains ⓘ

There are no non-standard protein/DNA/RNA residues in this entry.

5.5 Carbohydrates ⓘ

There are no carbohydrates in this entry.

5.6 Ligand geometry ⓘ

Of 8 ligands modelled in this entry, 2 are monoatomic - leaving 6 for Mogul analysis.

In the following table, the Counts columns list the number of bonds (or angles) for which Mogul statistics could be retrieved, the number of bonds (or angles) that are observed in the model and the number of bonds (or angles) that are defined in the Chemical Component Dictionary. The Link column lists molecule types, if any, to which the group is linked. The Z score for a bond length (or angle) is the number of standard deviations the observed value is removed from the expected value. A bond length (or angle) with $|Z| > 2$ is considered an outlier worth inspection. RMSZ is the root-mean-square of all Z scores of the bond lengths (or angles).

Mol	Type	Chain	Res	Link	Bond lengths			Bond angles		
					Counts	RMSZ	$\# Z > 2$	Counts	RMSZ	$\# Z > 2$
3	FAD	A	234	-	51,58,58	1.85	8 (15%)	54,89,89	2.29	10 (18%)
4	LDP	A	501[A]	-	11,11,11	1.00	0	14,14,14	1.08	1 (7%)
4	LDP	A	501[B]	-	11,11,11	1.01	0	14,14,14	1.09	1 (7%)
3	FAD	B	233	-	51,58,58	1.94	8 (15%)	54,89,89	2.26	10 (18%)
4	LDP	B	502[A]	-	11,11,11	1.01	0	14,14,14	1.10	1 (7%)
4	LDP	B	502[B]	-	11,11,11	1.00	0	14,14,14	1.09	1 (7%)

In the following table, the Chirals column lists the number of chiral outliers, the number of chiral centers analysed, the number of these observed in the model and the number defined in the Chemical Component Dictionary. Similar counts are reported in the Torsion and Rings columns. '-' means no outliers of that kind were identified.

Mol	Type	Chain	Res	Link	Chirals	Torsions	Rings
3	FAD	A	234	-	-	0/28/50/50	0/6/6/6
4	LDP	A	501[A]	-	-	0/3/3/3	0/1/1/1
4	LDP	A	501[B]	-	-	0/3/3/3	0/1/1/1
3	FAD	B	233	-	-	0/28/50/50	0/6/6/6
4	LDP	B	502[A]	-	-	0/3/3/3	0/1/1/1
4	LDP	B	502[B]	-	-	0/3/3/3	0/1/1/1

All (16) bond length outliers are listed below:

Mol	Chain	Res	Type	Atoms	Z	Observed(Å)	Ideal(Å)
3	A	234	FAD	C4X-C10	2.07	1.44	1.41
3	B	233	FAD	C2A-N3A	2.18	1.35	1.32
3	B	233	FAD	C9-C8	2.57	1.44	1.37
3	A	234	FAD	C9-C8	2.75	1.45	1.37
3	A	234	FAD	C4A-N3A	3.20	1.40	1.35
3	B	233	FAD	C4A-N3A	3.38	1.40	1.35
3	A	234	FAD	C5X-N5	3.63	1.40	1.35
3	A	234	FAD	C4-N3	3.72	1.39	1.33
3	B	233	FAD	C5X-N5	3.77	1.41	1.35
3	A	234	FAD	C10-N1	3.81	1.38	1.33
3	B	233	FAD	C10-N1	4.07	1.39	1.33
3	B	233	FAD	C4-N3	4.50	1.41	1.33
3	A	234	FAD	C4X-N5	6.15	1.42	1.33
3	B	233	FAD	C4X-N5	6.23	1.42	1.33
3	A	234	FAD	C9A-N10	6.41	1.47	1.38
3	B	233	FAD	C9A-N10	6.70	1.47	1.38

All (24) bond angle outliers are listed below:

Mol	Chain	Res	Type	Atoms	Z	Observed(°)	Ideal(°)
3	B	233	FAD	N3A-C2A-N1A	-5.21	124.32	128.86
3	A	234	FAD	N3A-C2A-N1A	-4.98	124.52	128.86
3	B	233	FAD	C4B-O4B-C1B	-4.40	105.09	109.77
3	A	234	FAD	C4X-C4-N3	-4.30	117.37	123.48
3	B	233	FAD	C4X-C4-N3	-4.27	117.41	123.48
3	A	234	FAD	C4B-O4B-C1B	-3.98	105.53	109.77
3	B	233	FAD	C4-C4X-C10	-3.06	117.48	119.96
3	A	234	FAD	C4-C4X-C10	-3.03	117.51	119.96
4	B	502[A]	LDP	C6-C5-C4	-2.30	118.19	120.51
4	B	502[B]	LDP	C6-C5-C4	-2.30	118.19	120.51
4	A	501[B]	LDP	C6-C5-C4	-2.29	118.19	120.51
4	A	501[A]	LDP	C6-C5-C4	-2.27	118.22	120.51
3	B	233	FAD	O2B-C2B-C3B	2.41	119.54	111.83
3	B	233	FAD	C1'-N10-C10	2.51	121.08	118.50
3	A	234	FAD	O2B-C2B-C3B	2.52	119.89	111.83
3	B	233	FAD	O2'-C2'-C3'	2.71	115.82	109.09
3	A	234	FAD	O2'-C2'-C3'	2.85	116.17	109.09
3	A	234	FAD	C1'-N10-C10	2.87	121.44	118.50
3	A	234	FAD	C4-C4X-N5	3.30	122.30	118.68
3	B	233	FAD	C4-C4X-N5	3.30	122.30	118.68
3	A	234	FAD	C4X-N5-C5X	4.59	121.61	116.76
3	B	233	FAD	C4X-N5-C5X	4.70	121.72	116.76
3	B	233	FAD	C4-N3-C2	10.42	124.28	115.16

Continued on next page...

Continued from previous page...

Mol	Chain	Res	Type	Atoms	Z	Observed($^{\circ}$)	Ideal($^{\circ}$)
3	A	234	FAD	C4-N3-C2	10.73	124.55	115.16

There are no chirality outliers.

There are no torsion outliers.

There are no ring outliers.

4 monomers are involved in 5 short contacts:

Mol	Chain	Res	Type	Clashes	Symm-Clashes
4	A	501[A]	LDP	1	0
4	A	501[B]	LDP	1	0
4	B	502[A]	LDP	1	0
4	B	502[B]	LDP	2	0

5.7 Other polymers [i](#)

There are no such residues in this entry.

5.8 Polymer linkage issues [i](#)

There are no chain breaks in this entry.

6 Fit of model and data

6.1 Protein, DNA and RNA chains

In the following table, the column labelled ‘#RSRZ> 2’ contains the number (and percentage) of RSRZ outliers, followed by percent RSRZ outliers for the chain as percentile scores relative to all X-ray entries and entries of similar resolution. The OWAB column contains the minimum, median, 95th percentile and maximum values of the occupancy-weighted average B-factor per residue. The column labelled ‘Q< 0.9’ lists the number of (and percentage) of residues with an average occupancy less than 0.9.

Mol	Chain	Analysed	<RSRZ>	#RSRZ>2		OWAB(Å ²)	Q<0.9
1	A	230/230 (100%)	0.49	20 (8%)	11 14	7, 25, 49, 61	0
1	B	230/230 (100%)	0.18	13 (5%)	24 30	8, 17, 37, 51	0
All	All	460/460 (100%)	0.33	33 (7%)	16 21	7, 20, 46, 61	0

All (33) RSRZ outliers are listed below:

Mol	Chain	Res	Type	RSRZ
1	B	1	ALA	6.5
1	A	1	ALA	6.2
1	A	230	GLN	4.8
1	A	128	ILE	4.8
1	B	230	GLN	4.4
1	A	129	PRO	3.8
1	A	198	GLU	3.7
1	B	198	GLU	3.6
1	A	130	GLY	3.1
1	A	225	HIS	3.0
1	B	63	GLU	3.0
1	A	229	GLY	2.9
1	A	63	GLU	2.9
1	A	197	GLU	2.7
1	B	229	GLY	2.6
1	A	196	SER	2.5
1	A	131	PHE	2.4
1	B	197	GLU	2.3
1	B	194	ILE	2.3
1	B	62	PRO	2.3
1	A	56	THR	2.2
1	A	60	SER	2.2
1	A	59	LEU	2.2
1	B	157	LYS	2.2

Continued on next page...

Continued from previous page...

Mol	Chain	Res	Type	RSRZ
1	A	221	PRO	2.2
1	B	108	VAL	2.1
1	A	57	GLY	2.1
1	B	201	LYS	2.1
1	A	194	ILE	2.1
1	A	132	TYR	2.1
1	A	153	GLU	2.0
1	B	195	ALA	2.0
1	B	196	SER	2.0

6.2 Non-standard residues in protein, DNA, RNA chains [i](#)

There are no non-standard protein/DNA/RNA residues in this entry.

6.3 Carbohydrates [i](#)

There are no carbohydrates in this entry.

6.4 Ligands [i](#)

In the following table, the Atoms column lists the number of modelled atoms in the group and the number defined in the chemical component dictionary. LLDF column lists the quality of electron density of the group with respect to its neighbouring residues in protein, DNA or RNA chains. The B-factors column lists the minimum, median, 95th percentile and maximum values of B factors of atoms in the group. The column labelled 'Q< 0.9' lists the number of atoms with occupancy less than 0.9.

Mol	Type	Chain	Res	Atoms	RSCC	RSR	LLDF	B-factors(Å ²)	Q<0.9
4	LDP	A	501[B]	11/11	0.75	0.34	9.35	38,39,41,41	11
4	LDP	B	502[A]	11/11	0.76	0.33	8.14	45,46,47,47	11
4	LDP	A	501[A]	11/11	0.75	0.34	7.94	26,31,34,35	11
4	LDP	B	502[B]	11/11	0.76	0.33	4.71	27,29,30,33	11
3	FAD	A	234	53/53	0.93	0.14	-0.11	11,17,33,34	0
3	FAD	B	233	53/53	0.94	0.12	-0.24	14,18,28,31	0
2	ZN	A	231	1/1	0.99	0.05	-3.23	30,30,30,30	0
2	ZN	B	232	1/1	0.99	0.04	-	22,22,22,22	0

6.5 Other polymers [i](#)

There are no such residues in this entry.