



# Full wwPDB X-ray Structure Validation Report ⓘ

Feb 14, 2017 – 04:37 am GMT

PDB ID : 2QN2  
Title : Glycogen Phosphorylase b in complex with Maslinic Acid  
Authors : Zographos, S.E.; Leonidas, D.D.; Alexacou, K.-M.; Hayes, J.; Oikonomakos, N.G.  
Deposited on : 2007-07-17  
Resolution : 2.70 Å(reported)

This is a Full wwPDB X-ray Structure Validation Report for a publicly released PDB entry.

We welcome your comments at [validation@mail.wwpdb.org](mailto:validation@mail.wwpdb.org)

A user guide is available at

<http://wwpdb.org/validation/2016/XrayValidationReportHelp>

with specific help available everywhere you see the ⓘ symbol.

---

The following versions of software and data (see [references ⓘ](#)) were used in the production of this report:

MolProbity : 4.02b-467  
Mogul : 1.7.2 (RC1), CSD as538be (2017)  
Xtriage (Phenix) : 1.9-1692  
EDS : trunk28620  
Percentile statistics : 20161228.v01 (using entries in the PDB archive December 28th 2016)  
Refmac : 5.8.0135  
CCP4 : 6.5.0  
Ideal geometry (proteins) : Engh & Huber (2001)  
Ideal geometry (DNA, RNA) : Parkinson et al. (1996)  
Validation Pipeline (wwPDB-VP) : recalc28949

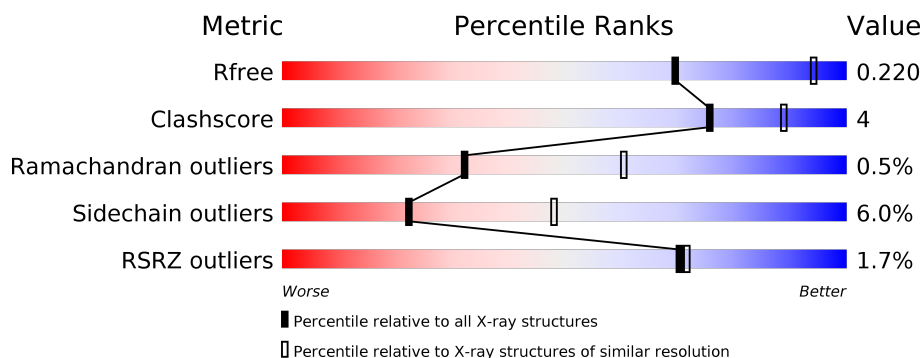
# 1 Overall quality at a glance

The following experimental techniques were used to determine the structure:

*X-RAY DIFFRACTION*

The reported resolution of this entry is 2.70 Å.

Percentile scores (ranging between 0-100) for global validation metrics of the entry are shown in the following graphic. The table shows the number of entries on which the scores are based.



Metric	Whole archive (#Entries)	Similar resolution (#Entries, resolution range(Å))
$R_{free}$	100719	2259 (2.70-2.70)
Clashscore	112137	2590 (2.70-2.70)
Ramachandran outliers	110173	2550 (2.70-2.70)
Sidechain outliers	110143	2550 (2.70-2.70)
RSRZ outliers	101464	2275 (2.70-2.70)

The table below summarises the geometric issues observed across the polymeric chains and their fit to the electron density. The red, orange, yellow and green segments on the lower bar indicate the fraction of residues that contain outliers for  $\geq 3$ , 2, 1 and 0 types of geometric quality criteria. A grey segment represents the fraction of residues that are not modelled. The numeric value for each fraction is indicated below the corresponding segment, with a dot representing fractions  $\leq 5\%$ . The upper red bar (where present) indicates the fraction of residues that have poor fit to the electron density. The numeric value is given above the bar.

Mol	Chain	Length	Quality of chain
1	A	842	<div> <div>2%</div> <div> <div></div> <div>85%</div> <div>11%</div> <div>..</div> </div> </div>

## 2 Entry composition [i](#)

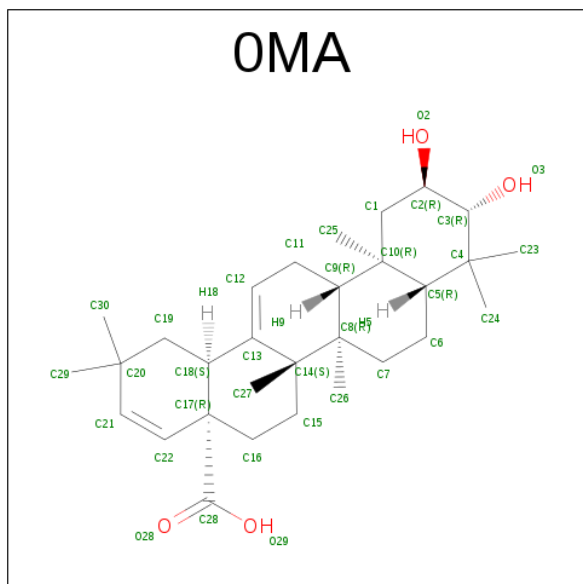
There are 3 unique types of molecules in this entry. The entry contains 6801 atoms, of which 0 are hydrogens and 0 are deuteriums.

In the tables below, the ZeroOcc column contains the number of atoms modelled with zero occupancy, the AltConf column contains the number of residues with at least one atom in alternate conformation and the Trace column contains the number of residues modelled with at most 2 atoms.

- Molecule 1 is a protein called Glycogen phosphorylase, muscle form.

Mol	Chain	Residues	Atoms						ZeroOcc	AltConf	Trace
1	A	813	Total	C	N	O	P	S	0	3	0
			6638	4230	1170	1207	1	30			

- Molecule 2 is MASLINIC ACID (three-letter code: OMA) (formula: C<sub>30</sub>H<sub>46</sub>O<sub>4</sub>).



Mol	Chain	Residues	Atoms			ZeroOcc	AltConf
2	A	1	Total	C	O	0	0
			34	30	4		

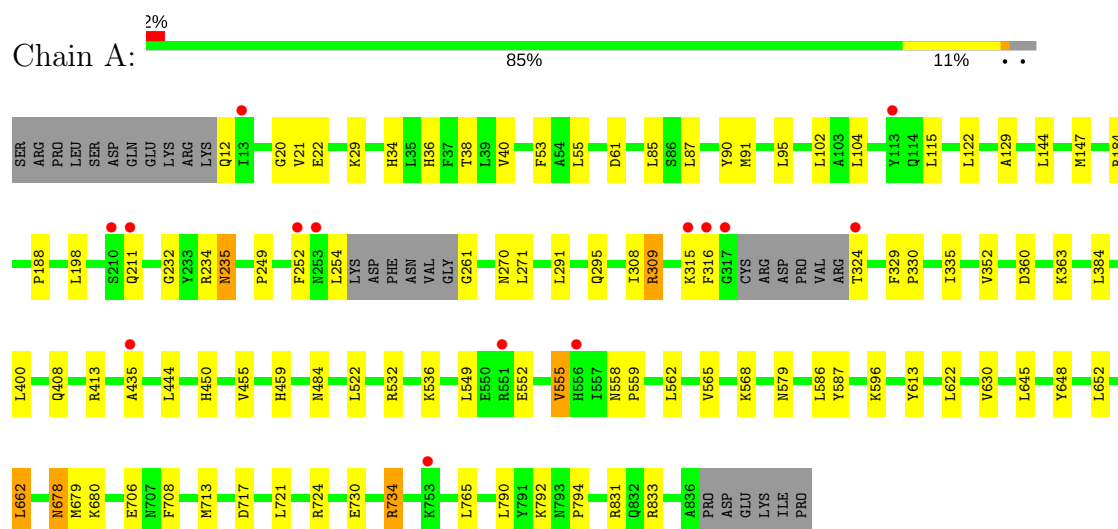
- Molecule 3 is water.

Mol	Chain	Residues	Atoms		ZeroOcc	AltConf
3	A	129	Total	O	0	0
			129	129		

### 3 Residue-property plots [i](#)

These plots are drawn for all protein, RNA and DNA chains in the entry. The first graphic for a chain summarises the proportions of the various outlier classes displayed in the second graphic. The second graphic shows the sequence view annotated by issues in geometry and electron density. Residues are color-coded according to the number of geometric quality criteria for which they contain at least one outlier: green = 0, yellow = 1, orange = 2 and red = 3 or more. A red dot above a residue indicates a poor fit to the electron density ( $RSRZ > 2$ ). Stretches of 2 or more consecutive residues without any outlier are shown as a green connector. Residues present in the sample, but not in the model, are shown in grey.

- Molecule 1: Glycogen phosphorylase, muscle form



## 4 Data and refinement statistics

Property	Value	Source
Space group	P 43 21 2	Depositor
Cell constants a, b, c, $\alpha$ , $\beta$ , $\gamma$	128.72Å 128.72Å 116.70Å 90.00° 90.00° 90.00°	Depositor
Resolution (Å)	90.91 – 2.70 28.45 – 2.70	Depositor EDS
% Data completeness (in resolution range)	99.7 (90.91-2.70) 99.8 (28.45-2.70)	Depositor EDS
$R_{merge}$	(Not available)	Depositor
$R_{sym}$	0.08	Depositor
$\langle I/\sigma(I) \rangle$ <sup>1</sup>	2.35 (at 2.68Å)	Xtriage
Refinement program	REFMAC 5.2	Depositor
R, $R_{free}$	0.168 , 0.223 0.166 , 0.220	Depositor DCC
$R_{free}$ test set	1383 reflections (5.29%)	DCC
Wilson B-factor (Å <sup>2</sup> )	44.2	Xtriage
Anisotropy	0.050	Xtriage
Bulk solvent $k_{sol}$ (e/Å <sup>3</sup> ), $B_{sol}$ (Å <sup>2</sup> )	0.29 , 33.1	EDS
L-test for twinning <sup>2</sup>	$\langle  L  \rangle = 0.50$ , $\langle L^2 \rangle = 0.34$	Xtriage
Estimated twinning fraction	No twinning to report.	Xtriage
$F_o, F_c$ correlation	0.96	EDS
Total number of atoms	6801	wwPDB-VP
Average B, all atoms (Å <sup>2</sup> )	42.0	wwPDB-VP

Xtriage's analysis on translational NCS is as follows: *The largest off-origin peak in the Patterson function is 2.68% of the height of the origin peak. No significant pseudotranslation is detected.*

<sup>1</sup>Intensities estimated from amplitudes.

<sup>2</sup>Theoretical values of  $\langle |L| \rangle$ ,  $\langle L^2 \rangle$  for acentric reflections are 0.5, 0.333 respectively for untwinned datasets, and 0.375, 0.2 for perfectly twinned datasets.

## 5 Model quality [i](#)

### 5.1 Standard geometry [i](#)

Bond lengths and bond angles in the following residue types are not validated in this section: LLP, OMA

The Z score for a bond length (or angle) is the number of standard deviations the observed value is removed from the expected value. A bond length (or angle) with  $|Z| > 5$  is considered an outlier worth inspection. RMSZ is the root-mean-square of all Z scores of the bond lengths (or angles).

Mol	Chain	Bond lengths		Bond angles	
		RMSZ	$\# Z  > 5$	RMSZ	$\# Z  > 5$
1	A	0.48	0/6779	0.59	0/9171

There are no bond length outliers.

There are no bond angle outliers.

There are no chirality outliers.

There are no planarity outliers.

### 5.2 Too-close contacts [i](#)

In the following table, the Non-H and H(model) columns list the number of non-hydrogen atoms and hydrogen atoms in the chain respectively. The H(added) column lists the number of hydrogen atoms added and optimized by MolProbity. The Clashes column lists the number of clashes within the asymmetric unit, whereas Symm-Clashes lists symmetry related clashes.

Mol	Chain	Non-H	H(model)	H(added)	Clashes	Symm-Clashes
1	A	6638	0	6569	46	0
2	A	34	0	45	2	0
3	A	129	0	0	7	0
All	All	6801	0	6614	48	0

The all-atom clashscore is defined as the number of clashes found per 1000 atoms (including hydrogen atoms). The all-atom clashscore for this structure is 4.

All (48) close contacts within the same asymmetric unit are listed below, sorted by their clash magnitude.

Atom-1	Atom-2	Interatomic distance (Å)	Clash overlap (Å)
1:A:455:VAL:H	1:A:459:HIS:HD2	1.32	0.77

*Continued on next page...*

*Continued from previous page...*

Atom-1	Atom-2	Interatomic distance (Å)	Clash overlap (Å)
1:A:34:HIS:HD2	1:A:38:THR:OG1	1.76	0.68
2:A:930:OMA:H253	2:A:930:OMA:H243	1.79	0.63
1:A:235:ASN:H	1:A:235:ASN:HD22	1.46	0.62
1:A:678:ASN:HD22	1:A:679:MET:H	1.48	0.61
1:A:184:ARG:NH1	3:A:962:HOH:O	2.35	0.60
1:A:309:ARG:HH21	1:A:309:ARG:CB	2.17	0.58
1:A:308:ILE:HD13	1:A:352:VAL:HG11	1.86	0.58
1:A:309:ARG:HH21	1:A:309:ARG:HB3	1.69	0.58
1:A:678:ASN:ND2	1:A:679:MET:H	2.02	0.57
1:A:85:LEU:HD13	1:A:335:ILE:HG23	1.86	0.56
1:A:435:ALA:HB3	3:A:1057:HOH:O	2.06	0.56
1:A:678:ASN:HD22	1:A:678:ASN:N	2.03	0.56
1:A:562:LEU:HD21	1:A:662:LEU:HB2	1.87	0.56
1:A:232:GLY:HA3	1:A:235:ASN:HD21	1.71	0.55
1:A:261:GLY:N	3:A:973:HOH:O	2.41	0.54
1:A:792:LYS:O	1:A:794:PRO:HD3	2.08	0.54
1:A:730:GLU:O	1:A:734:ARG:HG3	2.08	0.53
1:A:329:PHE:HB3	1:A:330:PRO:HD3	1.90	0.53
1:A:55:LEU:HD23	1:A:95:LEU:HD21	1.91	0.53
1:A:648:TYR:HA	1:A:652:LEU:HD23	1.93	0.51
2:A:930:OMA:H263	2:A:930:OMA:H252	1.93	0.50
1:A:34:HIS:HE1	1:A:61:ASP:OD1	1.95	0.49
1:A:680:LLP:NZ	1:A:680:LLP:O3	2.46	0.49
1:A:91:MET:HB2	1:A:129:ALA:HB3	1.96	0.48
1:A:309:ARG:HH21	1:A:309:ARG:CG	2.26	0.48
1:A:249:PRO:O	1:A:252:PHE:HB2	2.15	0.47
1:A:413:ARG:HG2	1:A:413:ARG:HH21	1.80	0.46
1:A:235:ASN:N	1:A:235:ASN:HD22	2.10	0.45
1:A:20:GLY:O	1:A:22:GLU:N	2.49	0.45
1:A:252:PHE:C	1:A:254:LEU:H	2.20	0.45
1:A:455:VAL:H	1:A:459:HIS:CD2	2.22	0.45
1:A:730:GLU:O	1:A:734:ARG:CG	2.64	0.45
1:A:34:HIS:CD2	1:A:38:THR:OG1	2.65	0.44
1:A:713:MET:HB3	1:A:717:ASP:HB2	2.00	0.44
1:A:53:PHE:HE2	1:A:188:PRO:HD3	1.82	0.43
1:A:450:HIS:HD2	3:A:976:HOH:O	2.00	0.43
1:A:558:ASN:HA	1:A:559:PRO:HD3	1.87	0.43
1:A:144:LEU:HD23	1:A:147:MET:CE	2.49	0.43
1:A:270:ASN:ND2	3:A:970:HOH:O	2.37	0.43
1:A:291:LEU:O	1:A:295:GLN:HG3	2.20	0.42
1:A:549:LEU:HB3	1:A:555:VAL:HG23	2.02	0.42

*Continued on next page...*

*Continued from previous page...*

Atom-1	Atom-2	Interatomic distance (Å)	Clash overlap (Å)
1:A:532:ARG:O	1:A:536:LYS:HB2	2.20	0.41
1:A:678:ASN:N	1:A:678:ASN:ND2	2.67	0.41
1:A:36:HIS:O	1:A:40:VAL:HA	2.20	0.41
1:A:484:ASN:ND2	3:A:1020:HOH:O	2.53	0.41
1:A:450:HIS:HE1	3:A:985:HOH:O	2.04	0.40
1:A:587:TYR:CD2	1:A:630:VAL:HG22	2.56	0.40

There are no symmetry-related clashes.

## 5.3 Torsion angles [i](#)

### 5.3.1 Protein backbone [i](#)

In the following table, the Percentiles column shows the percent Ramachandran outliers of the chain as a percentile score with respect to all X-ray entries followed by that with respect to entries of similar resolution.

The Analysed column shows the number of residues for which the backbone conformation was analysed, and the total number of residues.

Mol	Chain	Analysed	Favoured	Allowed	Outliers	Percentiles
1	A	809/842 (96%)	778 (96%)	27 (3%)	4 (0%)	32 60

All (4) Ramachandran outliers are listed below:

Mol	Chain	Res	Type
1	A	21	VAL
1	A	316	PHE
1	A	568	LYS
1	A	315	LYS

### 5.3.2 Protein sidechains [i](#)

In the following table, the Percentiles column shows the percent sidechain outliers of the chain as a percentile score with respect to all X-ray entries followed by that with respect to entries of similar resolution.

The Analysed column shows the number of residues for which the sidechain conformation was analysed, and the total number of residues.



Mol	Chain	Analysed	Rotameric	Outliers	Percentiles	
1	A	705/730 (97%)	663 (94%)	42 (6%)	22	48

All (42) residues with a non-rotameric sidechain are listed below:

Mol	Chain	Res	Type
1	A	12	GLN
1	A	29	LYS
1	A	87	LEU
1	A	90	TYR
1	A	102	LEU
1	A	104	LEU
1	A	115	LEU
1	A	122	LEU
1	A	198	LEU
1	A	211	GLN
1	A	234	ARG
1	A	235	ASN
1	A	271	LEU
1	A	309	ARG
1	A	324	THR
1	A	360	ASP
1	A	363	LYS
1	A	384	LEU
1	A	400	LEU
1	A	408	GLN
1	A	444	LEU
1	A	522	LEU
1	A	552	GLU
1	A	555	VAL
1	A	565	VAL
1	A	579	ASN
1	A	586	LEU
1	A	596	LYS
1	A	613	TYR
1	A	622	LEU
1	A	645	LEU
1	A	662	LEU
1	A	678	ASN
1	A	706	GLU
1	A	708	PHE
1	A	721	LEU
1	A	724	ARG
1	A	734	ARG

*Continued on next page...*

*Continued from previous page...*

Mol	Chain	Res	Type
1	A	765	LEU
1	A	790	LEU
1	A	831	ARG
1	A	833	ARG

Some sidechains can be flipped to improve hydrogen bonding and reduce clashes. All (14) such sidechains are listed below:

Mol	Chain	Res	Type
1	A	12	GLN
1	A	34	HIS
1	A	72	GLN
1	A	235	ASN
1	A	253	ASN
1	A	270	ASN
1	A	412	ASN
1	A	450	HIS
1	A	459	HIS
1	A	481	ASN
1	A	484	ASN
1	A	566	GLN
1	A	579	ASN
1	A	678	ASN

### 5.3.3 RNA ⓘ

There are no RNA molecules in this entry.

## 5.4 Non-standard residues in protein, DNA, RNA chains ⓘ

1 non-standard protein/DNA/RNA residue is modelled in this entry.

In the following table, the Counts columns list the number of bonds (or angles) for which Mogul statistics could be retrieved, the number of bonds (or angles) that are observed in the model and the number of bonds (or angles) that are defined in the chemical component dictionary. The Link column lists molecule types, if any, to which the group is linked. The Z score for a bond length (or angle) is the number of standard deviations the observed value is removed from the expected value. A bond length (or angle) with  $|Z| > 2$  is considered an outlier worth inspection. RMSZ is the root-mean-square of all Z scores of the bond lengths (or angles).

Mol	Type	Chain	Res	Link	Bond lengths			Bond angles		
					Counts	RMSZ	# Z  > 2	Counts	RMSZ	# Z  > 2
1	LLP	A	680	1	24,24,25	1.69	4 (16%)	28,32,34	1.37	3 (10%)

In the following table, the Chirals column lists the number of chiral outliers, the number of chiral centers analysed, the number of these observed in the model and the number defined in the chemical component dictionary. Similar counts are reported in the Torsion and Rings columns. '-' means no outliers of that kind were identified.

Mol	Type	Chain	Res	Link	Chirals	Torsions	Rings
1	LLP	A	680	1	-	0/15/17/19	0/1/1/1

All (4) bond length outliers are listed below:

Mol	Chain	Res	Type	Atoms	Z	Observed(Å)	Ideal(Å)
1	A	680	LLP	O3-C3	-5.46	1.24	1.37
1	A	680	LLP	C4'-NZ	2.28	1.34	1.27
1	A	680	LLP	C4-C4'	2.85	1.51	1.46
1	A	680	LLP	CA-C	3.05	1.54	1.50

All (3) bond angle outliers are listed below:

Mol	Chain	Res	Type	Atoms	Z	Observed(°)	Ideal(°)
1	A	680	LLP	C5-C6-N1	-2.95	118.88	123.87
1	A	680	LLP	CE-NZ-C4'	-2.82	110.83	119.03
1	A	680	LLP	C4-C4'-NZ	-2.67	111.67	124.66

There are no chirality outliers.

There are no torsion outliers.

There are no ring outliers.

1 monomer is involved in 1 short contact:

Mol	Chain	Res	Type	Clashes	Symm-Clashes
1	A	680	LLP	1	0

## 5.5 Carbohydrates

There are no carbohydrates in this entry.

## 5.6 Ligand geometry

1 ligand is modelled in this entry.

In the following table, the Counts columns list the number of bonds (or angles) for which Mogul statistics could be retrieved, the number of bonds (or angles) that are observed in the model and the number of bonds (or angles) that are defined in the chemical component dictionary. The Link column lists molecule types, if any, to which the group is linked. The Z score for a bond length (or angle) is the number of standard deviations the observed value is removed from the expected value. A bond length (or angle) with  $|Z| > 2$  is considered an outlier worth inspection. RMSZ is the root-mean-square of all Z scores of the bond lengths (or angles).

Mol	Type	Chain	Res	Link	Bond lengths			Bond angles		
					Counts	RMSZ	$\# Z  > 2$	Counts	RMSZ	$\# Z  > 2$
2	OMA	A	930	-	34,38,38	3.21	8 (23%)	51,67,67	1.06	2 (3%)

In the following table, the Chirals column lists the number of chiral outliers, the number of chiral centers analysed, the number of these observed in the model and the number defined in the chemical component dictionary. Similar counts are reported in the Torsion and Rings columns. '-' means no outliers of that kind were identified.

Mol	Type	Chain	Res	Link	Chirals	Torsions	Rings
2	OMA	A	930	-	-	0/0/100/100	0/5/5/5

All (8) bond length outliers are listed below:

Mol	Chain	Res	Type	Atoms	Z	Observed(Å)	Ideal(Å)
2	A	930	OMA	C11-C12	-5.18	1.39	1.50
2	A	930	OMA	C8-C9	2.16	1.60	1.56
2	A	930	OMA	C14-C13	2.51	1.57	1.53
2	A	930	OMA	C17-C28	2.80	1.55	1.50
2	A	930	OMA	C20-C21	3.06	1.55	1.51
2	A	930	OMA	C12-C13	3.31	1.40	1.33
2	A	930	OMA	C17-C22	3.44	1.55	1.51
2	A	930	OMA	C21-C22	16.03	1.56	1.32

All (2) bond angle outliers are listed below:

Mol	Chain	Res	Type	Atoms	Z	Observed(°)	Ideal(°)
2	A	930	OMA	C18-C13-C12	-2.87	115.27	118.96
2	A	930	OMA	C11-C9-C8	3.65	113.91	110.25

There are no chirality outliers.

There are no torsion outliers.

There are no ring outliers.

1 monomer is involved in 2 short contacts:

Mol	Chain	Res	Type	Clashes	Symm-Clashes
2	A	930	0MA	2	0

## 5.7 Other polymers [i](#)

There are no such residues in this entry.

## 5.8 Polymer linkage issues [i](#)

There are no chain breaks in this entry.

## 6 Fit of model and data ⓘ

### 6.1 Protein, DNA and RNA chains ⓘ

In the following table, the column labelled ‘#RSRZ> 2’ contains the number (and percentage) of RSRZ outliers, followed by percent RSRZ outliers for the chain as percentile scores relative to all X-ray entries and entries of similar resolution. The OWAB column contains the minimum, median, 95<sup>th</sup> percentile and maximum values of the occupancy-weighted average B-factor per residue. The column labelled ‘Q< 0.9’ lists the number of (and percentage) of residues with an average occupancy less than 0.9.

Mol	Chain	Analysed	<RSRZ>	#RSRZ>2	OWAB(Å <sup>2</sup> )	Q<0.9
1	A	812/842 (96%)	-0.42	14 (1%) 70 72	26, 40, 62, 86	0

All (14) RSRZ outliers are listed below:

Mol	Chain	Res	Type	RSRZ
1	A	253	ASN	8.7
1	A	316	PHE	8.6
1	A	317	GLY	6.2
1	A	252	PHE	5.8
1	A	315	LYS	4.3
1	A	324	THR	3.8
1	A	13	ILE	3.2
1	A	435	ALA	2.7
1	A	210	SER	2.5
1	A	113	TYR	2.4
1	A	551	ARG	2.3
1	A	211	GLN	2.2
1	A	556	HIS	2.1
1	A	753	LYS	2.0

### 6.2 Non-standard residues in protein, DNA, RNA chains ⓘ

In the following table, the Atoms column lists the number of modelled atoms in the group and the number defined in the chemical component dictionary. LLDF column lists the quality of electron density of the group with respect to its neighbouring residues in protein, DNA or RNA chains. The B-factors column lists the minimum, median, 95<sup>th</sup> percentile and maximum values of B factors of atoms in the group. The column labelled ‘Q< 0.9’ lists the number of atoms with occupancy less than 0.9.

Mol	Type	Chain	Res	Atoms	RSCC	RSR	LLDF	B-factors(Å <sup>2</sup> )	Q<0.9
1	LLP	A	680	24/25	0.99	0.12	-	28,30,32,32	0

### 6.3 Carbohydrates [i](#)

There are no carbohydrates in this entry.

### 6.4 Ligands [i](#)

In the following table, the Atoms column lists the number of modelled atoms in the group and the number defined in the chemical component dictionary. LLDF column lists the quality of electron density of the group with respect to its neighbouring residues in protein, DNA or RNA chains. The B-factors column lists the minimum, median, 95<sup>th</sup> percentile and maximum values of B factors of atoms in the group. The column labelled 'Q< 0.9' lists the number of atoms with occupancy less than 0.9.

Mol	Type	Chain	Res	Atoms	RSCC	RSR	LLDF	B-factors( $\text{\AA}^2$ )	Q<0.9
2	OMA	A	930	34/34	0.91	0.20	0.77	81,82,83,83	0

### 6.5 Other polymers [i](#)

There are no such residues in this entry.