



Full wwPDB X-ray Structure Validation Report ⓘ

Feb 14, 2017 – 02:13 pm GMT

PDB ID : 3QP5
Title : Crystal structure of CviR bound to antagonist chlorolactone (CL)
Authors : Chen, G.; Swem, L.; Swem, D.; Stauff, D.; O'Loughlin, C.; Jeffrey, P.; Bassler, B.; Hughson, F.
Deposited on : 2011-02-11
Resolution : 3.25 Å(reported)

This is a Full wwPDB X-ray Structure Validation Report for a publicly released PDB entry.

We welcome your comments at validation@mail.wwpdb.org

A user guide is available at

<http://wwpdb.org/validation/2016/XrayValidationReportHelp>

with specific help available everywhere you see the ⓘ symbol.

The following versions of software and data (see [references ⓘ](#)) were used in the production of this report:

MolProbity : 4.02b-467
Mogul : 1.7.2 (RC1), CSD as538be (2017)
Xtriage (Phenix) : 1.9-1692
EDS : trunk28620
Percentile statistics : 20161228.v01 (using entries in the PDB archive December 28th 2016)
Refmac : 5.8.0135
CCP4 : 6.5.0
Ideal geometry (proteins) : Engh & Huber (2001)
Ideal geometry (DNA, RNA) : Parkinson et al. (1996)
Validation Pipeline (wwPDB-VP) : recalc28949

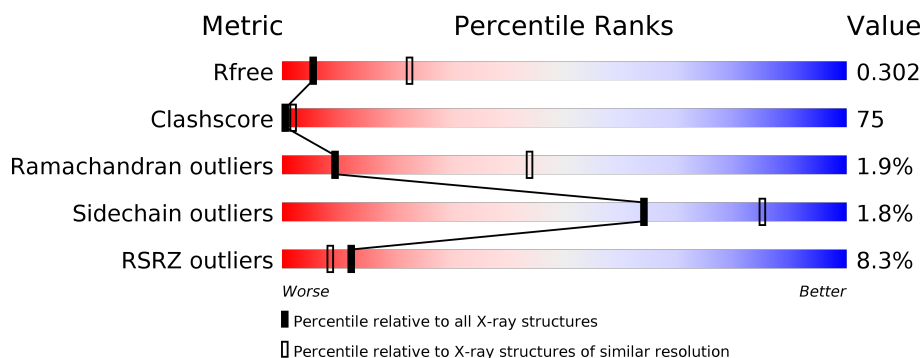
1 Overall quality at a glance i

The following experimental techniques were used to determine the structure:

X-RAY DIFFRACTION

The reported resolution of this entry is 3.25 Å.

Percentile scores (ranging between 0-100) for global validation metrics of the entry are shown in the following graphic. The table shows the number of entries on which the scores are based.



Metric	Whole archive (#Entries)	Similar resolution (#Entries, resolution range(Å))
R_{free}	100719	1247 (3.28-3.20)
Clashscore	112137	1383 (3.28-3.20)
Ramachandran outliers	110173	1358 (3.28-3.20)
Sidechain outliers	110143	1357 (3.28-3.20)
RSRZ outliers	101464	1252 (3.28-3.20)

The table below summarises the geometric issues observed across the polymeric chains and their fit to the electron density. The red, orange, yellow and green segments on the lower bar indicate the fraction of residues that contain outliers for ≥ 3 , 2, 1 and 0 types of geometric quality criteria. A grey segment represents the fraction of residues that are not modelled. The numeric value for each fraction is indicated below the corresponding segment, with a dot representing fractions $\leq 5\%$. The upper red bar (where present) indicates the fraction of residues that have poor fit to the electron density. The numeric value is given above the bar.

Mol	Chain	Length	Quality of chain
1	A	265	<div> <div>12%</div> <div>37%</div> <div>55%</div> <div>5%</div> </div>
1	B	265	<div> <div>10%</div> <div>40%</div> <div>44%</div> <div>5%</div> <div>10%</div> </div>
1	C	265	<div> <div>6%</div> <div>39%</div> <div>47%</div> <div>10%</div> </div>
1	D	265	<div> <div>2%</div> <div>45%</div> <div>44%</div> <div>10%</div> </div>

The following table lists non-polymeric compounds, carbohydrate monomers and non-standard residues in protein, DNA, RNA chains that are outliers for geometric or electron-density-fit crite-

ria:

Mol	Type	Chain	Res	Chirality	Geometry	Clashes	Electron density
2	HLC	A	266	-	-	-	X
2	HLC	B	266	-	-	-	X
2	HLC	C	266	-	-	X	X

2 Entry composition [i](#)

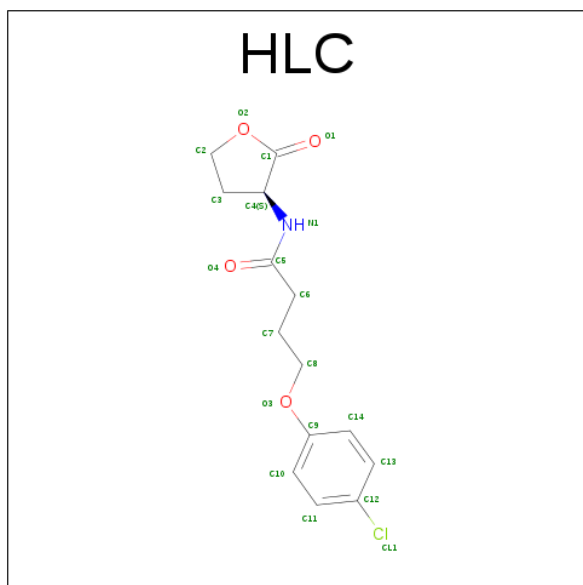
There are 2 unique types of molecules in this entry. The entry contains 7738 atoms, of which 0 are hydrogens and 0 are deuteriums.

In the tables below, the ZeroOcc column contains the number of atoms modelled with zero occupancy, the AltConf column contains the number of residues with at least one atom in alternate conformation and the Trace column contains the number of residues modelled with at most 2 atoms.

- Molecule 1 is a protein called CviR transcriptional regulator.

Mol	Chain	Residues	Atoms					ZeroOcc	AltConf	Trace
1	A	251	Total	C	N	O	S	0	0	0
			1977	1240	370	357	10			
1	B	238	Total	C	N	O	S	0	0	0
			1890	1186	353	342	9			
1	C	239	Total	C	N	O	S	0	0	0
			1902	1196	354	343	9			
1	D	238	Total	C	N	O	S	0	0	0
			1889	1186	353	342	8			

- Molecule 2 is 4-(4-CHLOROPHENOXY)-N-[(3S)-2-OXOTETRAHYDROFURAN-3-YL]BUTANAMIDE (three-letter code: HLC) (formula: C₁₄H₁₆ClNO₄).



Mol	Chain	Residues	Atoms				ZeroOcc	AltConf
2	A	1	Total	C	Cl	N	O	0
			20	14	1	1	4	0
2	B	1	Total	C	Cl	N	O	0
			20	14	1	1	4	0

Continued on next page...

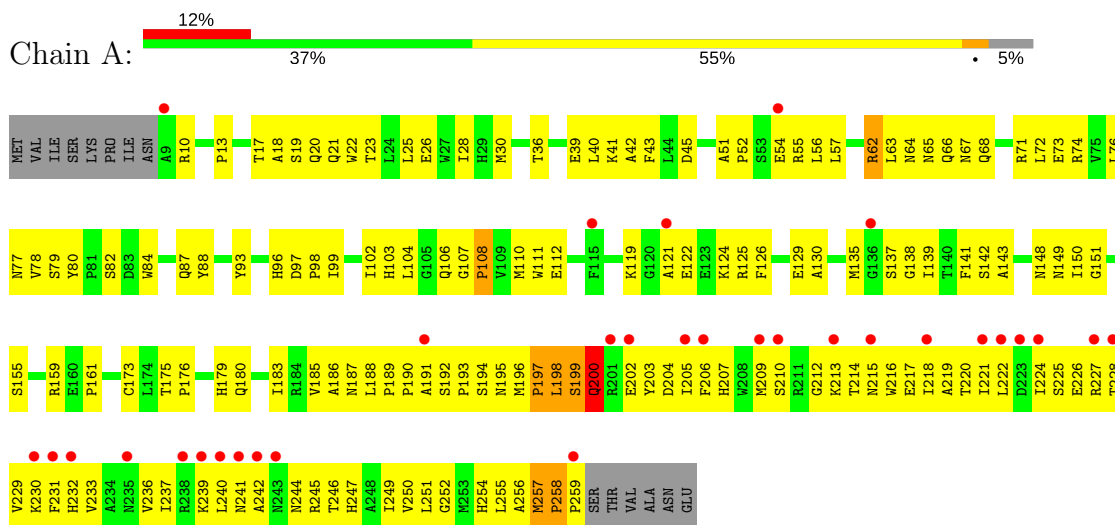
Continued from previous page...

Mol	Chain	Residues	Atoms					ZeroOcc	AltConf
2	C	1	Total	C	Cl	N	O	0	0
			20	14	1	1	4		
2	D	1	Total	C	Cl	N	O	0	0
			20	14	1	1	4		

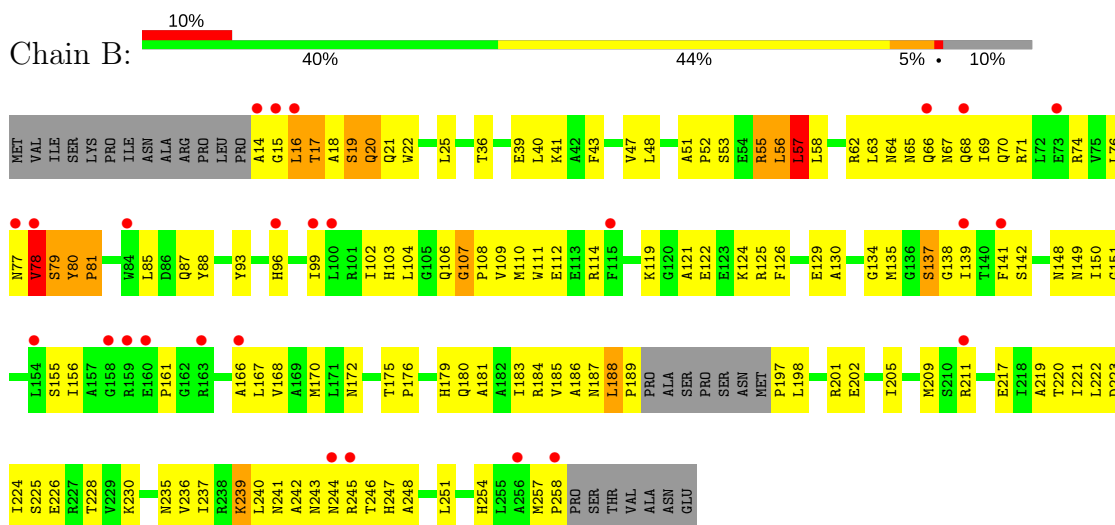
3 Residue-property plots

These plots are drawn for all protein, RNA and DNA chains in the entry. The first graphic for a chain summarises the proportions of the various outlier classes displayed in the second graphic. The second graphic shows the sequence view annotated by issues in geometry and electron density. Residues are color-coded according to the number of geometric quality criteria for which they contain at least one outlier: green = 0, yellow = 1, orange = 2 and red = 3 or more. A red dot above a residue indicates a poor fit to the electron density ($RSRZ > 2$). Stretches of 2 or more consecutive residues without any outlier are shown as a green connector. Residues present in the sample, but not in the model, are shown in grey.

• Molecule 1: CviR transcriptional regulator

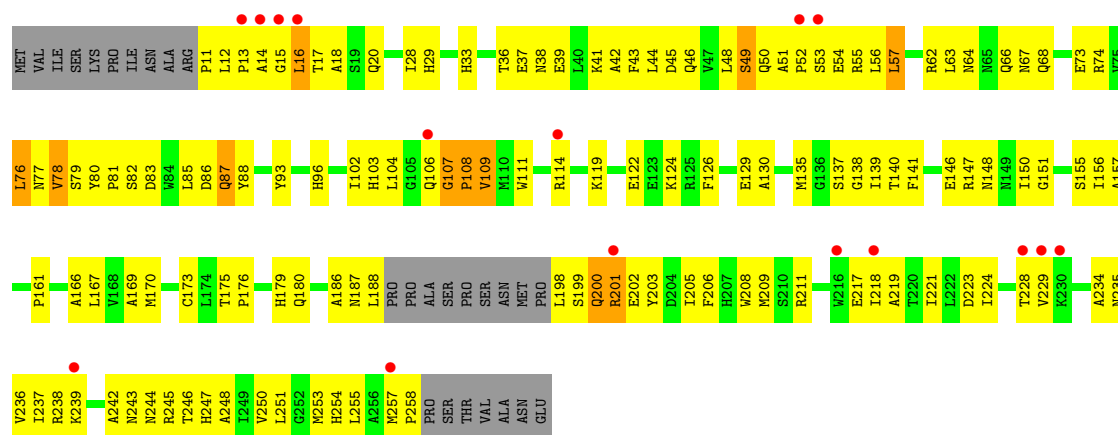


• Molecule 1: CviR transcriptional regulator

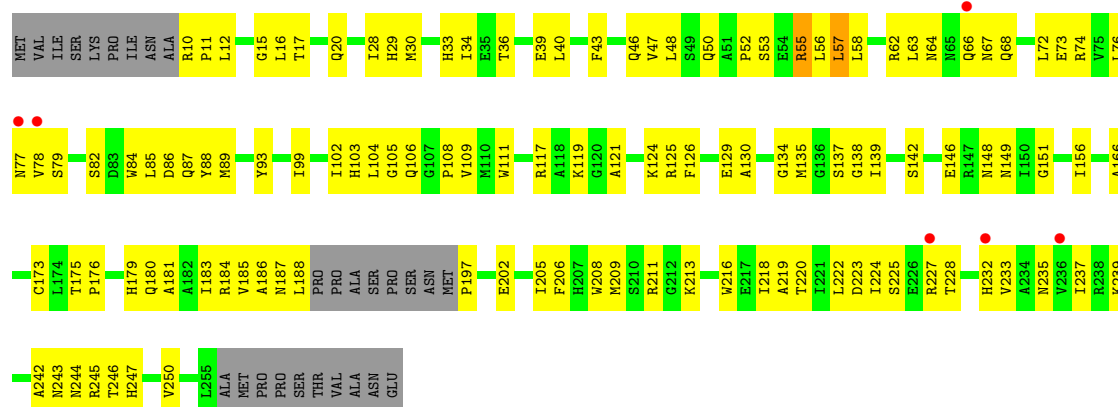
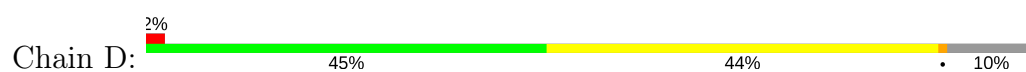


• Molecule 1: CviR transcriptional regulator





• Molecule 1: CviR transcriptional regulator



4 Data and refinement statistics

Property	Value	Source
Space group	H 3	Depositor
Cell constants a, b, c, α , β , γ	169.32Å 169.32Å 99.84Å 90.00° 90.00° 120.00°	Depositor
Resolution (Å)	48.88 – 3.25 48.88 – 3.25	Depositor EDS
% Data completeness (in resolution range)	94.9 (48.88-3.25) 99.2 (48.88-3.25)	Depositor EDS
R_{merge}	0.06	Depositor
R_{sym}	0.06	Depositor
$\langle I/\sigma(I) \rangle$ ¹	2.58 (at 3.25Å)	Xtriage
Refinement program	PHENIX (phenix.refine: 1.5_2)	Depositor
R, R_{free}	0.263 , 0.304 0.265 , 0.302	Depositor DCC
R_{free} test set	844 reflections (5.06%)	DCC
Wilson B-factor (Å ²)	90.8	Xtriage
Anisotropy	0.713	Xtriage
Bulk solvent k_{sol} (e/Å ³), B_{sol} (Å ²)	0.30 , 101.2	EDS
L-test for twinning ²	$\langle L \rangle = 0.44$, $\langle L^2 \rangle = 0.27$	Xtriage
Estimated twinning fraction	0.034 for -2/3*h-1/3*k-4/3*l,-1/3*h-2/3*k+4/3*l,-1/3*h+1/3*k+1/3*l 0.034 for -h,1/3*h-1/3*k-4/3*l,-1/3*h-2/3*k+1/3*l 0.035 for -1/3*h+1/3*k+4/3*l,-k,2/3*h+1/3*k+1/3*l 0.039 for -h,2/3*h+1/3*k+4/3*l,1/3*h+2/3*k-1/3*l 0.045 for -1/3*h-2/3*k+4/3*l,-2/3*h-1/3*k-4/3*l,1/3*h-1/3*k-1/3*l 0.038 for 1/3*h+2/3*k-4/3*l,-k,-2/3*h-1/3*k-1/3*l 0.046 for h,-h-k,-l	Xtriage
F_o, F_c correlation	0.91	EDS
Total number of atoms	7738	wwPDB-VP
Average B, all atoms (Å ²)	140.0	wwPDB-VP

Xtriage's analysis on translational NCS is as follows: *The largest off-origin peak in the Patterson function is 3.21% of the height of the origin peak. No significant pseudotranslation is detected.*

¹Intensities estimated from amplitudes.

²Theoretical values of $\langle |L| \rangle$, $\langle L^2 \rangle$ for acentric reflections are 0.5, 0.333 respectively for untwinned datasets, and 0.375, 0.2 for perfectly twinned datasets.

5 Model quality

5.1 Standard geometry

Bond lengths and bond angles in the following residue types are not validated in this section: HLC

The Z score for a bond length (or angle) is the number of standard deviations the observed value is removed from the expected value. A bond length (or angle) with $|Z| > 5$ is considered an outlier worth inspection. RMSZ is the root-mean-square of all Z scores of the bond lengths (or angles).

Mol	Chain	Bond lengths		Bond angles	
		RMSZ	$\# Z > 5$	RMSZ	$\# Z > 5$
1	A	0.68	1/2021 (0.0%)	0.83	3/2743 (0.1%)
1	B	0.45	0/1927	0.65	2/2608 (0.1%)
1	C	0.51	0/1941	0.69	4/2628 (0.2%)
1	D	0.44	0/1927	0.68	2/2610 (0.1%)
All	All	0.53	1/7816 (0.0%)	0.72	11/10589 (0.1%)

All (1) bond length outliers are listed below:

Mol	Chain	Res	Type	Atoms	Z	Observed(Å)	Ideal(Å)
1	A	258	PRO	C-N	5.79	1.45	1.34

All (11) bond angle outliers are listed below:

Mol	Chain	Res	Type	Atoms	Z	Observed(°)	Ideal(°)
1	A	189	PRO	N-CA-CB	6.86	111.53	103.30
1	B	197	PRO	N-CA-CB	6.67	111.30	103.30
1	D	197	PRO	N-CA-CB	5.92	110.40	103.30
1	A	28	ILE	CB-CA-C	-5.88	99.85	111.60
1	C	57	LEU	N-CA-CB	-5.57	99.27	110.40
1	C	49	SER	N-CA-C	-5.34	96.58	111.00
1	D	57	LEU	N-CA-CB	-5.28	99.85	110.40
1	C	78	VAL	CB-CA-C	-5.23	101.47	111.40
1	A	62	ARG	CB-CA-C	5.05	120.51	110.40
1	B	239	LYS	N-CA-CB	5.05	119.69	110.60
1	C	87	GLN	N-CA-CB	5.01	119.62	110.60

There are no chirality outliers.

There are no planarity outliers.

5.2 Too-close contacts ⓘ

In the following table, the Non-H and H(model) columns list the number of non-hydrogen atoms and hydrogen atoms in the chain respectively. The H(added) column lists the number of hydrogen atoms added and optimized by MolProbity. The Clashes column lists the number of clashes within the asymmetric unit, whereas Symm-Clashes lists symmetry related clashes.

Mol	Chain	Non-H	H(model)	H(added)	Clashes	Symm-Clashes
1	A	1977	0	1951	381	1
1	B	1890	0	1873	312	1
1	C	1902	0	1895	335	1
1	D	1889	0	1867	231	0
2	A	20	0	16	4	0
2	B	20	0	16	5	0
2	C	20	0	16	13	0
2	D	20	0	16	5	0
All	All	7738	0	7650	1157	2

The all-atom clashscore is defined as the number of clashes found per 1000 atoms (including hydrogen atoms). The all-atom clashscore for this structure is 75.

All (1157) close contacts within the same asymmetric unit are listed below, sorted by their clash magnitude.

Atom-1	Atom-2	Interatomic distance (Å)	Clash overlap (Å)
1:C:111:TRP:CD2	1:C:138:GLY:HA3	1.24	1.61
1:A:57:LEU:HB2	1:A:80:TYR:CE2	1.18	1.60
1:A:40:LEU:HD23	1:A:76:LEU:CD1	1.15	1.56
1:B:48:LEU:CD2	1:B:56:LEU:HD21	1.20	1.55
1:C:111:TRP:CE3	1:C:138:GLY:HA3	1.40	1.54
1:A:40:LEU:CD2	1:A:76:LEU:CD1	1.86	1.51
1:B:222:LEU:CD2	1:D:106:GLN:NE2	1.70	1.48
1:D:57:LEU:HA	1:D:77:ASN:ND2	1.27	1.48
1:C:109:VAL:CG1	1:C:114:ARG:HD2	1.43	1.45
1:C:247:HIS:NE2	1:D:78:VAL:HG22	1.33	1.44
1:B:222:LEU:HD21	1:D:106:GLN:NE2	1.15	1.43
1:B:48:LEU:HD22	1:B:56:LEU:CD2	0.95	1.41
1:C:109:VAL:CG1	1:C:114:ARG:CD	1.96	1.41
1:B:48:LEU:CD2	1:B:56:LEU:CD2	1.74	1.40
1:A:254:HIS:O	1:A:258:PRO:CD	1.67	1.40
1:D:48:LEU:HD22	1:D:56:LEU:CD2	1.50	1.38
1:D:17:THR:OG1	1:D:20:GLN:HG3	1.23	1.35
1:A:40:LEU:CD2	1:A:76:LEU:HD13	1.44	1.35
1:C:147:ARG:NH2	1:C:148:ASN:ND2	1.76	1.33

Continued on next page...

Continued from previous page...

Atom-1	Atom-2	Interatomic distance (Å)	Clash overlap (Å)
1:D:17:THR:OG1	1:D:20:GLN:CG	1.77	1.33
1:B:187:ASN:CG	1:B:188:LEU:HA	1.47	1.33
1:C:111:TRP:CE3	1:C:138:GLY:CA	2.10	1.33
1:A:57:LEU:CB	1:A:80:TYR:CE2	2.11	1.32
1:C:56:LEU:H	1:C:79:SER:CB	1.43	1.32
1:B:67:ASN:HB2	1:B:103:HIS:CB	1.60	1.32
1:A:65:ASN:ND2	1:D:243:ASN:CG	1.84	1.31
1:B:187:ASN:CB	1:B:188:LEU:HA	1.41	1.30
1:C:44:LEU:HD13	1:C:77:ASN:ND2	1.47	1.29
1:C:16:LEU:CD2	1:C:170:MET:HG2	1.59	1.29
1:D:57:LEU:CA	1:D:77:ASN:HD22	1.34	1.29
1:A:205:ILE:O	1:A:209:MET:HG2	1.29	1.28
1:C:111:TRP:CD2	1:C:138:GLY:CA	2.13	1.27
1:C:109:VAL:HG11	1:C:114:ARG:NH1	1.48	1.27
1:A:57:LEU:CB	1:A:80:TYR:HE2	1.44	1.27
1:A:203:TYR:O	1:A:207:HIS:CB	1.82	1.26
1:A:203:TYR:O	1:A:207:HIS:HB2	1.08	1.26
1:D:57:LEU:CA	1:D:77:ASN:ND2	1.89	1.25
1:A:65:ASN:ND2	1:D:243:ASN:ND2	1.85	1.24
1:B:67:ASN:CB	1:B:103:HIS:HB2	1.67	1.24
1:A:65:ASN:HD21	1:D:243:ASN:ND2	1.29	1.24
1:A:41:LYS:HD2	1:A:41:LYS:O	1.35	1.23
1:C:15:GLY:C	1:C:16:LEU:HD12	1.57	1.23
1:C:67:ASN:O	1:C:104:LEU:HD13	1.35	1.23
1:C:247:HIS:NE2	1:D:78:VAL:CG2	2.00	1.22
1:B:224:ILE:HG21	1:B:228:THR:CG2	1.70	1.22
1:D:202:GLU:O	1:D:205:ILE:HB	1.40	1.22
1:C:56:LEU:N	1:C:79:SER:HB3	1.51	1.22
1:B:57:LEU:CB	1:B:77:ASN:HD22	1.53	1.21
1:C:257:MET:HB2	1:C:258:PRO:HD3	1.23	1.20
1:B:224:ILE:CG2	1:B:228:THR:CG2	2.18	1.20
1:C:147:ARG:HH21	1:C:148:ASN:ND2	1.36	1.20
1:B:67:ASN:CB	1:B:103:HIS:CB	2.18	1.19
1:B:67:ASN:HB2	1:B:103:HIS:CA	1.72	1.19
1:A:227:ARG:HG2	1:A:231:PHE:CE2	1.78	1.16
1:B:187:ASN:HB3	1:B:188:LEU:HA	1.18	1.16
1:C:17:THR:OG1	1:C:20:GLN:HG3	1.45	1.16
1:A:190:PRO:HA	1:A:191:ALA:CB	1.63	1.16
1:A:193:PRO:N	1:A:194:SER:HA	1.50	1.16
1:C:55:ARG:HA	1:C:79:SER:OG	1.44	1.15
1:A:190:PRO:CA	1:A:191:ALA:HB3	1.77	1.15

Continued on next page...

Continued from previous page...

Atom-1	Atom-2	Interatomic distance (Å)	Clash overlap (Å)
1:C:16:LEU:HD21	1:C:170:MET:CG	1.76	1.15
1:C:254:HIS:O	1:C:258:PRO:HD2	1.47	1.15
1:D:48:LEU:HD22	1:D:56:LEU:HD23	1.29	1.14
1:B:63:LEU:O	1:B:149:ASN:HB3	1.44	1.14
1:A:254:HIS:O	1:A:258:PRO:HD2	1.44	1.14
1:A:255:LEU:O	1:A:259:PRO:CD	1.94	1.14
1:A:65:ASN:HD22	1:D:243:ASN:CG	1.43	1.13
1:A:10:ARG:NH1	1:A:176:PRO:HB3	1.64	1.13
1:D:40:LEU:HD23	1:D:76:LEU:HD23	1.13	1.12
1:C:109:VAL:CG1	1:C:114:ARG:HH11	1.60	1.12
1:B:67:ASN:HB3	1:B:103:HIS:CG	1.85	1.12
1:B:224:ILE:HG22	1:B:228:THR:HB	1.13	1.11
1:A:209:MET:HE3	1:A:245:ARG:HE	1.07	1.11
1:B:226:GLU:HG2	1:B:230:LYS:HE2	1.25	1.11
1:C:254:HIS:CG	1:D:74:ARG:HG3	1.86	1.11
1:A:110:MET:HA	1:A:139:ILE:HD13	1.33	1.11
1:D:55:ARG:HA	1:D:79:SER:HB3	1.18	1.11
1:B:224:ILE:CG2	1:B:228:THR:HG21	1.77	1.11
1:B:57:LEU:CG	1:B:77:ASN:HD22	1.64	1.11
1:B:57:LEU:CG	1:B:77:ASN:ND2	2.14	1.10
1:B:48:LEU:CD2	1:B:56:LEU:HD23	1.69	1.10
1:B:57:LEU:HG	1:B:77:ASN:ND2	1.64	1.10
1:B:20:GLN:HE22	1:B:166:ALA:CB	1.65	1.10
1:C:111:TRP:HB2	1:C:138:GLY:H	1.03	1.09
1:A:255:LEU:O	1:A:259:PRO:HD2	1.51	1.09
1:A:110:MET:HA	1:A:139:ILE:CD1	1.80	1.09
1:B:67:ASN:HB2	1:B:103:HIS:HA	1.33	1.09
1:C:16:LEU:CD2	1:C:170:MET:CG	2.30	1.09
1:B:48:LEU:HD22	1:B:56:LEU:CG	1.83	1.09
1:C:11:PRO:HG2	1:D:33:HIS:CE1	1.86	1.09
1:C:78:VAL:O	1:C:78:VAL:HG13	1.53	1.09
1:B:187:ASN:CB	1:B:188:LEU:CA	2.30	1.08
1:A:112:GLU:HG2	1:A:137:SER:HB3	1.35	1.07
1:A:111:TRP:HB2	1:A:138:GLY:H	1.19	1.07
1:A:40:LEU:HD23	1:A:76:LEU:HD12	1.31	1.07
1:C:44:LEU:CD1	1:C:77:ASN:ND2	2.17	1.07
1:A:55:ARG:HA	1:A:79:SER:OG	1.55	1.07
1:A:254:HIS:O	1:A:258:PRO:HD3	1.50	1.07
1:C:254:HIS:HB3	1:D:74:ARG:HA	1.31	1.07
1:C:219:ALA:HB1	1:C:224:ILE:O	1.55	1.07
1:D:74:ARG:HH12	1:D:186:ALA:HB2	1.16	1.06

Continued on next page...

Continued from previous page...

Atom-1	Atom-2	Interatomic distance (Å)	Clash overlap (Å)
1:C:109:VAL:HG12	1:C:114:ARG:HD3	1.37	1.06
1:A:227:ARG:CG	1:A:231:PHE:HE2	1.68	1.05
1:A:227:ARG:HG2	1:A:231:PHE:HE2	0.88	1.04
1:A:40:LEU:HD23	1:A:76:LEU:HD11	1.07	1.04
1:A:77:ASN:OD1	1:A:78:VAL:N	1.90	1.04
1:C:86:ASP:OD1	1:C:87:GLN:N	1.90	1.04
1:A:254:HIS:ND1	1:B:74:ARG:HG3	1.72	1.04
1:A:217:GLU:O	1:A:221:ILE:CD1	2.05	1.04
1:A:57:LEU:HB2	1:A:80:TYR:CZ	1.93	1.03
1:B:48:LEU:CG	1:B:56:LEU:CD2	2.36	1.03
1:B:40:LEU:CD2	1:B:76:LEU:HD13	1.87	1.03
1:B:187:ASN:HB3	1:B:188:LEU:CA	1.86	1.03
1:D:224:ILE:CG2	1:D:228:THR:HB	1.88	1.03
1:B:224:ILE:CG2	1:B:228:THR:HB	1.87	1.02
1:C:16:LEU:HD23	1:C:170:MET:SD	1.99	1.02
1:B:224:ILE:CG2	1:B:228:THR:CB	2.37	1.02
1:C:109:VAL:CG1	1:C:114:ARG:HD3	1.80	1.02
1:A:40:LEU:HD21	1:A:76:LEU:HD13	1.07	1.02
1:C:53:SER:HB3	1:C:156:ILE:CG2	1.91	1.01
1:B:58:LEU:H	1:B:77:ASN:HB3	1.22	1.01
1:A:30:MET:HE2	1:A:43:PHE:CE1	1.96	1.01
1:A:30:MET:CE	1:A:43:PHE:CE1	2.44	1.01
1:B:57:LEU:HB2	1:B:77:ASN:HD22	1.20	1.01
1:D:111:TRP:CE3	1:D:137:SER:O	2.13	1.01
1:B:67:ASN:CB	1:B:103:HIS:CG	2.41	1.00
1:D:111:TRP:HE3	1:D:137:SER:O	1.45	1.00
1:B:96:HIS:CD2	1:B:122:GLU:CB	2.44	1.00
1:C:109:VAL:HG11	1:C:114:ARG:HH11	0.90	1.00
1:D:48:LEU:CD2	1:D:56:LEU:HD23	1.90	1.00
1:C:44:LEU:HD12	1:C:77:ASN:CG	1.82	1.00
1:A:192:SER:H	1:C:49:SER:HB2	1.19	1.00
1:D:56:LEU:H	1:D:79:SER:HB2	1.26	0.99
1:A:18:ALA:O	1:A:22:TRP:N	1.93	0.99
1:A:102:ILE:CG2	1:A:106:GLN:HE21	1.76	0.99
1:A:217:GLU:O	1:A:221:ILE:HD12	1.62	0.99
1:D:48:LEU:HD22	1:D:56:LEU:HD21	1.44	0.99
1:D:48:LEU:CD2	1:D:56:LEU:CD2	2.40	0.99
1:B:57:LEU:HA	1:B:77:ASN:HB2	1.39	0.98
1:B:109:VAL:HG21	1:B:114:ARG:HH21	1.27	0.98
1:B:187:ASN:CG	1:B:188:LEU:CA	2.30	0.98
1:B:78:VAL:HG23	1:B:78:VAL:O	1.57	0.98

Continued on next page...

Continued from previous page...

Atom-1	Atom-2	Interatomic distance (Å)	Clash overlap (Å)
1:C:109:VAL:HG11	1:C:114:ARG:CD	1.84	0.98
1:B:224:ILE:HG22	1:B:228:THR:CB	1.93	0.98
1:C:237:ILE:HG23	1:C:242:ALA:HB3	1.43	0.98
1:B:222:LEU:HD22	1:D:106:GLN:NE2	1.77	0.98
1:D:12:LEU:O	1:D:173:CYS:SG	2.21	0.98
1:C:111:TRP:CZ2	2:C:266:HLC:H6	1.99	0.98
1:C:55:ARG:HD2	1:C:81:PRO:HD3	1.43	0.98
1:A:198:LEU:N	1:A:199:SER:HA	1.75	0.97
1:C:217:GLU:O	1:C:221:ILE:HG13	1.63	0.97
1:D:17:THR:HG1	1:D:20:GLN:CG	1.77	0.97
1:B:224:ILE:HG23	1:B:228:THR:HG21	1.46	0.97
1:B:63:LEU:CD2	1:B:104:LEU:HD12	1.94	0.97
1:A:242:ALA:HB1	1:A:247:HIS:HD1	1.28	0.97
1:C:102:ILE:CG2	1:C:114:ARG:HH12	1.78	0.96
1:C:147:ARG:NH2	1:C:148:ASN:HD22	1.46	0.96
1:A:10:ARG:HH12	1:A:176:PRO:HB3	1.31	0.96
1:B:40:LEU:HD23	1:B:76:LEU:HD13	1.42	0.96
1:A:219:ALA:HB2	1:A:229:VAL:HG23	1.45	0.96
1:C:44:LEU:CD1	1:C:77:ASN:CG	2.34	0.96
1:B:48:LEU:CD1	1:B:56:LEU:HD23	1.94	0.95
1:D:56:LEU:H	1:D:79:SER:CB	1.80	0.95
1:C:43:PHE:HA	1:C:46:GLN:OE1	1.64	0.95
1:B:57:LEU:HD23	1:B:57:LEU:C	1.87	0.95
1:A:229:VAL:O	1:A:233:VAL:HG23	1.66	0.95
1:A:250:VAL:HG22	2:B:266:HLC:CL1	2.03	0.95
1:C:16:LEU:N	1:C:16:LEU:CD1	2.30	0.95
1:B:20:GLN:NE2	1:B:166:ALA:HB1	1.82	0.94
1:B:48:LEU:CG	1:B:56:LEU:HD21	1.94	0.94
1:A:247:HIS:NE2	1:B:78:VAL:HA	1.81	0.94
1:D:40:LEU:HD23	1:D:76:LEU:CD2	1.97	0.94
1:B:109:VAL:HG21	1:B:114:ARG:NH2	1.82	0.94
1:C:13:PRO:HG3	1:D:29:HIS:CD2	2.03	0.94
1:C:67:ASN:O	1:C:104:LEU:CD1	2.15	0.94
1:D:74:ARG:NH1	1:D:186:ALA:HB2	1.81	0.94
1:A:193:PRO:CD	1:A:194:SER:HA	1.96	0.94
1:B:56:LEU:H	1:B:79:SER:CB	1.80	0.94
1:A:219:ALA:N	1:A:229:VAL:HG21	1.82	0.94
1:A:64:ASN:OD1	1:A:66:GLN:N	1.99	0.94
1:C:109:VAL:HG13	1:C:114:ARG:HD2	0.94	0.94
1:A:41:LYS:C	1:A:41:LYS:HD2	1.82	0.94
1:B:224:ILE:HG21	1:B:228:THR:HG22	1.46	0.94

Continued on next page...

Continued from previous page...

Atom-1	Atom-2	Interatomic distance (Å)	Clash overlap (Å)
1:A:192:SER:CB	1:A:194:SER:CB	2.45	0.93
1:A:197:PRO:HB2	1:A:199:SER:HB2	1.49	0.93
1:C:111:TRP:HB2	1:C:138:GLY:N	1.82	0.93
1:C:13:PRO:HA	1:C:173:CYS:SG	2.08	0.93
1:A:30:MET:CE	1:A:43:PHE:CD1	2.52	0.93
1:A:254:HIS:CE1	1:B:74:ARG:HG3	2.03	0.93
1:C:254:HIS:CG	1:D:74:ARG:CG	2.52	0.93
1:B:96:HIS:CD2	1:B:122:GLU:HB3	2.03	0.93
1:C:44:LEU:HD12	1:C:77:ASN:CB	1.99	0.92
1:A:193:PRO:N	1:A:194:SER:CA	2.29	0.92
1:A:251:LEU:HD21	1:B:77:ASN:O	1.70	0.92
1:B:77:ASN:O	1:B:78:VAL:HG12	1.68	0.92
1:A:198:LEU:N	1:A:198:LEU:HD23	1.85	0.92
1:A:246:THR:HA	1:A:249:ILE:HD12	1.47	0.91
1:B:40:LEU:HD23	1:B:76:LEU:CD1	2.00	0.91
1:A:102:ILE:CG2	1:A:106:GLN:NE2	2.34	0.91
1:C:29:HIS:NE2	1:D:11:PRO:HA	1.85	0.91
1:A:56:LEU:O	1:A:80:TYR:CE2	2.24	0.91
1:B:57:LEU:HA	1:B:77:ASN:CB	2.00	0.91
1:C:109:VAL:HG11	1:C:114:ARG:CZ	2.00	0.91
1:C:102:ILE:HG23	1:C:114:ARG:HH22	1.34	0.91
1:C:15:GLY:C	1:C:16:LEU:CD1	2.39	0.91
1:C:119:LYS:HA	1:C:124:LYS:HE3	1.53	0.90
1:C:219:ALA:CB	1:C:224:ILE:O	2.19	0.90
1:B:96:HIS:CD2	1:B:122:GLU:HB2	2.06	0.90
1:D:119:LYS:HA	1:D:124:LYS:HE3	1.53	0.90
1:A:202:GLU:O	1:A:206:PHE:N	2.04	0.90
1:B:254:HIS:O	1:B:258:PRO:HD2	1.71	0.90
1:C:257:MET:CB	1:C:258:PRO:HD3	1.97	0.90
1:C:102:ILE:CG2	1:C:114:ARG:NH1	2.35	0.90
1:A:111:TRP:HB2	1:A:138:GLY:N	1.85	0.90
1:C:254:HIS:CD2	1:D:74:ARG:HG3	2.06	0.89
1:A:106:GLN:HG3	1:A:106:GLN:O	1.71	0.89
1:A:209:MET:CE	1:A:245:ARG:HE	1.85	0.89
1:B:119:LYS:HA	1:B:124:LYS:HE3	1.52	0.89
1:B:226:GLU:CG	1:B:230:LYS:HE2	2.01	0.89
1:C:109:VAL:HG13	1:C:114:ARG:CD	1.81	0.89
1:D:17:THR:HG1	1:D:20:GLN:CD	1.76	0.89
1:C:187:ASN:OD1	1:C:188:LEU:N	2.06	0.89
1:A:198:LEU:HD23	1:A:198:LEU:H	1.35	0.89
1:A:77:ASN:H	1:B:251:LEU:CD2	1.84	0.89

Continued on next page...

Continued from previous page...

Atom-1	Atom-2	Interatomic distance (Å)	Clash overlap (Å)
1:A:193:PRO:HB2	1:A:194:SER:C	1.93	0.88
1:A:193:PRO:HD2	1:A:194:SER:O	1.72	0.88
1:C:29:HIS:CD2	1:D:11:PRO:HB3	2.09	0.88
1:C:17:THR:HG23	1:C:20:GLN:OE1	1.73	0.88
1:B:20:GLN:NE2	1:B:166:ALA:CB	2.37	0.87
1:A:102:ILE:HG22	1:A:106:GLN:NE2	1.89	0.87
1:A:119:LYS:HA	1:A:124:LYS:HE3	1.54	0.87
1:C:17:THR:HG1	1:C:20:GLN:HG3	1.32	0.87
1:B:99:ILE:O	1:B:102:ILE:HG13	1.75	0.87
1:C:147:ARG:HH22	1:C:148:ASN:HD22	1.13	0.87
1:A:192:SER:N	1:C:49:SER:HB2	1.86	0.87
1:A:71:ARG:NH2	1:C:42:ALA:HB2	1.89	0.86
1:B:48:LEU:CD1	1:B:56:LEU:CD2	2.53	0.86
1:C:147:ARG:NH2	1:C:148:ASN:CG	2.29	0.86
1:D:57:LEU:HA	1:D:77:ASN:HD22	0.70	0.86
1:A:112:GLU:CG	1:A:137:SER:HB3	2.03	0.86
1:B:63:LEU:HD21	1:B:104:LEU:CD1	2.05	0.86
1:C:48:LEU:HD12	1:C:49:SER:N	1.90	0.86
1:A:36:THR:CG2	1:A:39:GLU:HG3	2.06	0.85
1:C:52:PRO:HG2	1:C:161:PRO:HA	1.58	0.85
1:B:111:TRP:HB2	1:B:138:GLY:H	1.40	0.85
1:A:257:MET:HB2	1:A:258:PRO:HD3	1.57	0.85
1:D:188:LEU:O	1:D:188:LEU:HD13	1.76	0.85
1:A:237:ILE:CD1	1:A:245:ARG:HB2	2.05	0.85
1:D:78:VAL:O	1:D:78:VAL:HG12	1.73	0.85
1:A:224:ILE:HB	1:A:228:THR:HB	1.59	0.85
1:B:63:LEU:HD21	1:B:104:LEU:HD12	1.56	0.85
1:C:111:TRP:CE3	1:C:138:GLY:N	2.44	0.85
1:A:215:ASN:OD1	1:A:230:LYS:HG2	1.77	0.85
1:B:16:LEU:HD23	1:B:16:LEU:N	1.92	0.85
1:D:55:ARG:CA	1:D:79:SER:HB3	2.04	0.85
1:A:30:MET:HE2	1:A:43:PHE:CD1	2.11	0.84
1:A:65:ASN:HD21	1:D:243:ASN:HD21	1.25	0.84
1:D:222:LEU:O	1:D:223:ASP:HB2	1.77	0.84
1:C:111:TRP:CE2	1:C:138:GLY:HA3	2.09	0.84
1:A:210:SER:HA	1:A:249:ILE:HG12	1.59	0.84
1:B:226:GLU:HG2	1:B:230:LYS:CE	2.06	0.84
1:D:17:THR:OG1	1:D:20:GLN:CD	2.14	0.84
1:D:58:LEU:H	1:D:77:ASN:HB2	1.42	0.84
1:A:255:LEU:O	1:A:259:PRO:HD3	1.75	0.84
1:A:30:MET:CE	1:A:43:PHE:HE1	1.88	0.84

Continued on next page...

Continued from previous page...

Atom-1	Atom-2	Interatomic distance (Å)	Clash overlap (Å)
1:C:63:LEU:HD11	1:C:104:LEU:HD22	1.58	0.84
1:A:216:TRP:CH2	1:A:220:THR:OG1	2.30	0.84
1:B:76:LEU:O	1:B:76:LEU:HD23	1.78	0.84
1:D:202:GLU:O	1:D:205:ILE:CB	2.24	0.84
1:A:219:ALA:CA	1:A:229:VAL:CG2	2.56	0.84
1:A:54:GLU:O	1:A:79:SER:CB	2.25	0.83
1:A:82:SER:CB	1:B:244:ASN:HD21	1.90	0.83
1:D:48:LEU:HD13	1:D:56:LEU:HD23	1.58	0.83
1:A:209:MET:HE1	1:A:233:VAL:HG21	1.61	0.83
1:C:109:VAL:HG12	1:C:114:ARG:CD	1.97	0.83
1:D:99:ILE:O	1:D:102:ILE:HG13	1.78	0.83
1:A:30:MET:HE1	1:A:43:PHE:CE1	2.12	0.83
1:A:192:SER:C	1:A:194:SER:HA	1.99	0.83
1:A:219:ALA:CB	1:A:229:VAL:HG23	2.08	0.83
1:B:235:ASN:O	1:B:239:LYS:HG3	1.77	0.83
1:C:56:LEU:H	1:C:79:SER:HB3	0.68	0.83
1:D:40:LEU:CD2	1:D:76:LEU:HD23	2.03	0.83
1:A:224:ILE:HB	1:A:228:THR:CB	2.09	0.83
1:B:63:LEU:HD12	1:B:150:ILE:O	1.78	0.83
1:D:48:LEU:HD22	1:D:56:LEU:CG	2.08	0.83
1:A:215:ASN:HB3	1:A:226:GLU:HG3	1.59	0.82
1:B:63:LEU:CD1	1:B:150:ILE:C	2.47	0.82
1:A:212:GLY:O	1:A:213:LYS:HD2	1.80	0.82
1:B:183:ILE:O	1:B:187:ASN:N	2.11	0.82
1:C:11:PRO:CG	1:D:33:HIS:CE1	2.62	0.82
1:A:198:LEU:HA	1:A:255:LEU:HD11	1.62	0.82
1:C:102:ILE:HG22	1:C:114:ARG:CZ	2.10	0.82
1:C:49:SER:OG	1:C:50:GLN:OE1	1.96	0.82
2:C:266:HLC:CL1	1:D:250:VAL:HG22	2.16	0.82
1:B:221:ILE:HG23	1:D:103:HIS:CG	2.15	0.81
1:B:48:LEU:HD13	1:B:56:LEU:CD2	2.10	0.81
1:C:16:LEU:N	1:C:16:LEU:HD12	1.88	0.81
1:C:82:SER:CB	1:D:244:ASN:HD21	1.92	0.81
1:C:108:PRO:O	1:C:109:VAL:HG23	1.80	0.81
1:A:36:THR:HG22	1:A:39:GLU:HG3	1.61	0.81
1:D:48:LEU:CD1	1:D:56:LEU:HD23	2.10	0.81
1:C:257:MET:HB2	1:C:258:PRO:CD	2.08	0.81
1:D:57:LEU:HA	1:D:77:ASN:CG	2.00	0.81
1:A:237:ILE:HD11	1:A:245:ARG:HB2	1.61	0.81
1:A:55:ARG:CA	1:A:79:SER:OG	2.29	0.81
1:C:234:ALA:O	1:C:238:ARG:HG3	1.79	0.81

Continued on next page...

Continued from previous page...

Atom-1	Atom-2	Interatomic distance (Å)	Clash overlap (Å)
1:B:20:GLN:HE22	1:B:166:ALA:HB1	1.37	0.80
1:C:247:HIS:CD2	1:D:78:VAL:HG13	2.17	0.80
1:B:109:VAL:CG2	1:B:114:ARG:HH21	1.93	0.80
1:A:17:THR:O	1:A:21:GLN:HG3	1.80	0.80
1:B:186:ALA:O	1:B:188:LEU:CD1	2.30	0.80
1:B:56:LEU:H	1:B:79:SER:HB3	1.47	0.80
1:B:67:ASN:HB2	1:B:103:HIS:HB2	1.39	0.80
1:A:57:LEU:CB	1:A:80:TYR:CZ	2.60	0.80
1:C:257:MET:SD	1:D:72:LEU:O	2.40	0.80
1:C:53:SER:HB3	1:C:156:ILE:HG23	1.61	0.80
1:A:192:SER:CB	1:A:194:SER:OG	2.30	0.80
1:B:76:LEU:O	1:B:76:LEU:CD2	2.30	0.80
1:B:85:LEU:HD22	2:B:266:HLC:H14	1.62	0.80
1:D:235:ASN:O	1:D:239:LYS:HG3	1.82	0.80
1:D:56:LEU:N	1:D:79:SER:HB2	1.97	0.79
1:A:209:MET:HE3	1:A:245:ARG:NE	1.93	0.79
1:C:111:TRP:CG	1:C:138:GLY:CA	2.64	0.79
1:A:193:PRO:CD	1:A:194:SER:O	2.30	0.79
1:C:56:LEU:N	1:C:79:SER:CB	2.27	0.79
1:A:254:HIS:O	1:A:258:PRO:CG	2.29	0.79
1:B:63:LEU:HD11	1:B:151:GLY:CA	2.11	0.79
1:A:193:PRO:CG	1:A:194:SER:O	2.30	0.79
1:A:254:HIS:ND1	1:B:74:ARG:CG	2.46	0.79
1:A:57:LEU:HB3	1:A:80:TYR:OH	1.80	0.79
1:B:181:ALA:O	1:B:185:VAL:HG23	1.81	0.79
1:C:16:LEU:HD21	1:C:170:MET:HG2	0.85	0.79
1:A:242:ALA:HB1	1:A:247:HIS:ND1	1.97	0.79
1:B:77:ASN:O	1:B:78:VAL:CG1	2.30	0.79
1:C:247:HIS:NE2	1:D:78:VAL:HG13	1.97	0.79
1:C:102:ILE:CG2	1:C:114:ARG:HH22	1.94	0.79
1:C:254:HIS:O	1:C:258:PRO:CD	2.30	0.79
1:C:254:HIS:ND1	1:D:74:ARG:HG2	1.98	0.79
1:D:205:ILE:HD13	1:D:222:LEU:HD11	1.65	0.79
1:B:63:LEU:HD22	1:B:104:LEU:HD12	1.63	0.78
1:B:63:LEU:CD1	1:B:150:ILE:O	2.31	0.78
1:B:57:LEU:CB	1:B:77:ASN:ND2	2.39	0.78
1:B:78:VAL:O	1:B:78:VAL:CG2	2.30	0.78
1:A:99:ILE:O	1:A:102:ILE:HG13	1.83	0.78
1:C:247:HIS:NE2	1:D:78:VAL:CG1	2.47	0.78
1:C:111:TRP:CG	1:C:138:GLY:HA3	2.14	0.78
1:C:205:ILE:O	1:C:209:MET:HG3	1.83	0.78

Continued on next page...

Continued from previous page...

Atom-1	Atom-2	Interatomic distance (Å)	Clash overlap (Å)
1:A:62:ARG:NE	1:A:73:GLU:OE2	2.17	0.78
1:B:58:LEU:N	1:B:77:ASN:HB3	1.97	0.78
1:A:36:THR:HG22	1:A:39:GLU:CG	2.14	0.78
1:C:147:ARG:CZ	1:C:148:ASN:HB3	2.14	0.77
1:A:192:SER:CB	1:A:194:SER:HB2	2.14	0.77
1:A:65:ASN:HD22	1:D:243:ASN:CB	1.98	0.77
1:A:198:LEU:HA	1:A:255:LEU:CD1	2.15	0.77
1:B:244:ASN:OD1	1:B:247:HIS:HB3	1.85	0.77
1:C:102:ILE:HG22	1:C:114:ARG:NH1	1.99	0.77
1:A:215:ASN:OD1	1:A:230:LYS:CG	2.32	0.77
1:C:102:ILE:CG2	1:C:114:ARG:NH2	2.47	0.77
1:A:57:LEU:CA	1:A:80:TYR:HE2	1.96	0.77
1:B:109:VAL:HG11	1:B:114:ARG:NH2	2.00	0.77
1:A:226:GLU:HG2	1:A:230:LYS:HE3	1.67	0.76
1:D:78:VAL:CG1	1:D:78:VAL:O	2.32	0.76
1:A:112:GLU:CG	1:A:137:SER:CB	2.63	0.76
1:A:80:TYR:OH	1:A:155:SER:HB2	1.84	0.76
1:B:109:VAL:HG11	1:B:114:ARG:NE	2.01	0.76
1:B:57:LEU:HB2	1:B:77:ASN:ND2	1.98	0.76
1:C:78:VAL:O	1:C:78:VAL:CG1	2.30	0.76
1:C:63:LEU:HD21	1:C:104:LEU:CD2	2.16	0.75
1:C:82:SER:OG	1:D:246:THR:HG23	1.86	0.75
1:D:188:LEU:HD13	1:D:188:LEU:C	2.07	0.75
1:B:56:LEU:N	1:B:79:SER:HB3	2.02	0.75
1:D:74:ARG:HH12	1:D:186:ALA:CB	1.98	0.75
1:A:112:GLU:HG3	1:A:137:SER:HB2	1.69	0.75
1:B:67:ASN:HB3	1:B:103:HIS:HB2	1.59	0.75
1:A:217:GLU:O	1:A:221:ILE:CG1	2.34	0.75
1:C:63:LEU:HD21	1:C:104:LEU:HD22	1.67	0.74
1:B:186:ALA:O	1:B:188:LEU:HD12	1.88	0.74
1:C:36:THR:HG22	1:C:38:ASN:H	1.52	0.74
1:D:224:ILE:HG22	1:D:228:THR:HB	1.68	0.74
1:A:190:PRO:HA	1:A:191:ALA:HB3	0.80	0.74
1:A:237:ILE:HG22	1:A:242:ALA:O	1.87	0.74
1:C:16:LEU:HD23	1:C:170:MET:CG	2.10	0.74
1:A:62:ARG:CG	1:A:73:GLU:OE2	2.35	0.74
1:C:56:LEU:O	1:C:79:SER:N	2.17	0.74
1:B:48:LEU:HD13	1:B:56:LEU:HD23	1.68	0.74
1:C:48:LEU:O	1:C:49:SER:C	2.22	0.74
1:B:67:ASN:HD22	1:B:103:HIS:HB2	1.53	0.73
1:C:108:PRO:O	1:C:109:VAL:CG2	2.36	0.73

Continued on next page...

Continued from previous page...

Atom-1	Atom-2	Interatomic distance (Å)	Clash overlap (Å)
1:A:36:THR:HG23	1:A:39:GLU:H	1.52	0.73
1:C:11:PRO:HG2	1:D:33:HIS:HE1	1.50	0.73
1:C:111:TRP:CB	1:C:138:GLY:H	1.92	0.73
1:B:224:ILE:HG21	1:B:228:THR:HG21	1.49	0.73
1:D:111:TRP:CE3	1:D:138:GLY:HA3	2.22	0.73
1:D:48:LEU:CG	1:D:56:LEU:HD23	2.17	0.73
1:A:209:MET:CE	1:A:233:VAL:HG11	2.19	0.73
1:A:103:HIS:O	1:A:106:GLN:HG2	1.88	0.73
1:C:44:LEU:CD1	1:C:77:ASN:CB	2.66	0.73
1:B:85:LEU:CD2	2:B:266:HLC:H14	2.19	0.73
1:C:254:HIS:ND1	1:D:74:ARG:CG	2.52	0.73
1:A:82:SER:HB2	1:B:246:THR:HG23	1.71	0.73
1:C:244:ASN:OD1	1:C:247:HIS:HB3	1.88	0.72
1:C:111:TRP:CE2	2:C:266:HLC:H4	2.24	0.72
1:B:19:SER:O	1:B:21:GLN:N	2.22	0.72
1:D:74:ARG:NH1	1:D:186:ALA:CB	2.53	0.72
1:A:188:LEU:O	1:A:188:LEU:HD12	1.90	0.72
1:B:109:VAL:HG11	1:B:114:ARG:CZ	2.20	0.72
1:A:245:ARG:HG2	1:A:245:ARG:HH11	1.52	0.72
1:A:17:THR:HG22	1:A:18:ALA:N	2.04	0.72
1:B:67:ASN:ND2	1:B:103:HIS:HB2	2.04	0.72
1:B:111:TRP:HB2	1:B:138:GLY:N	2.03	0.72
1:A:193:PRO:HG2	1:A:194:SER:O	1.89	0.71
1:B:57:LEU:CD1	1:B:77:ASN:ND2	2.52	0.71
1:A:219:ALA:N	1:A:229:VAL:CG2	2.52	0.71
1:C:102:ILE:HG21	1:C:114:ARG:HH12	1.54	0.71
1:A:106:GLN:CG	1:A:106:GLN:O	2.38	0.71
1:D:244:ASN:OD1	1:D:247:HIS:HB3	1.91	0.71
1:A:25:LEU:HD13	1:B:25:LEU:HD13	1.71	0.71
1:C:29:HIS:HD2	1:D:11:PRO:HB3	1.51	0.71
1:C:15:GLY:O	1:C:16:LEU:HD12	1.89	0.71
1:D:29:HIS:O	1:D:33:HIS:CD2	2.43	0.71
1:A:217:GLU:O	1:A:221:ILE:HG13	1.91	0.71
1:B:99:ILE:HD13	1:B:114:ARG:HD2	1.72	0.70
1:C:108:PRO:HG3	1:C:141:PHE:CD1	2.26	0.70
1:A:193:PRO:CB	1:A:194:SER:C	2.59	0.70
1:C:102:ILE:HG22	1:C:114:ARG:NH2	2.06	0.70
1:A:36:THR:O	1:A:36:THR:HG23	1.90	0.70
1:D:111:TRP:CZ2	2:D:266:HLC:H6	2.26	0.70
1:A:110:MET:HA	1:A:139:ILE:HD12	1.72	0.70
1:A:57:LEU:HD23	2:A:266:HLC:H9	1.72	0.70

Continued on next page...

Continued from previous page...

Atom-1	Atom-2	Interatomic distance (Å)	Clash overlap (Å)
1:A:245:ARG:HG2	1:A:245:ARG:NH1	2.07	0.70
1:A:64:ASN:OD1	1:A:64:ASN:C	2.30	0.70
1:B:48:LEU:CG	1:B:56:LEU:HD23	2.13	0.70
1:C:43:PHE:HA	1:C:46:GLN:CD	2.10	0.70
1:A:65:ASN:ND2	1:D:243:ASN:OD1	2.25	0.70
1:D:17:THR:OG1	1:D:20:GLN:CB	2.40	0.70
1:C:17:THR:OG1	1:C:20:GLN:CG	2.35	0.70
1:A:210:SER:HB2	1:A:249:ILE:HG23	1.74	0.69
1:B:202:GLU:O	1:B:205:ILE:HB	1.91	0.69
1:B:48:LEU:HD21	1:B:56:LEU:HD23	1.72	0.69
1:A:250:VAL:CG2	2:B:266:HLC:CL1	2.77	0.69
1:C:52:PRO:HD3	1:C:167:LEU:CD2	2.21	0.69
1:C:64:ASN:ND2	1:C:68:GLN:HG2	2.07	0.69
1:C:44:LEU:HD13	1:C:77:ASN:HD22	1.55	0.69
1:A:219:ALA:HB2	1:A:229:VAL:CG2	2.20	0.69
1:A:219:ALA:HA	1:A:229:VAL:CG2	2.22	0.69
1:C:111:TRP:CZ2	2:C:266:HLC:C4	2.76	0.69
1:C:64:ASN:HD21	1:C:68:GLN:HG2	1.56	0.69
1:A:216:TRP:HZ3	1:A:225:SER:HA	1.58	0.69
1:A:202:GLU:OE2	1:A:239:LYS:CD	2.40	0.69
1:B:63:LEU:HD11	1:B:151:GLY:HA3	1.72	0.69
1:D:187:ASN:O	1:D:188:LEU:HB2	1.92	0.69
1:A:10:ARG:HH22	1:A:143:ALA:HA	1.55	0.69
1:B:109:VAL:HG11	1:B:114:ARG:HE	1.58	0.69
1:C:53:SER:OG	1:C:157:ALA:O	2.08	0.69
1:A:10:ARG:NH1	1:A:176:PRO:CB	2.51	0.69
1:A:193:PRO:HD2	1:A:194:SER:HA	1.74	0.68
1:B:108:PRO:HG3	1:B:172:ASN:OD1	1.93	0.68
1:C:36:THR:HG22	1:C:37:GLU:N	2.07	0.68
1:D:10:ARG:N	1:D:11:PRO:CD	2.56	0.68
1:C:102:ILE:CG2	1:C:114:ARG:CZ	2.71	0.68
1:A:54:GLU:O	1:A:79:SER:OG	2.11	0.68
1:B:67:ASN:HA	1:B:103:HIS:CD2	2.29	0.68
1:C:111:TRP:CH2	2:C:266:HLC:H6	2.28	0.68
1:A:102:ILE:HG23	1:A:106:GLN:HE21	1.55	0.68
1:A:30:MET:CE	1:A:43:PHE:HD1	2.04	0.68
1:C:104:LEU:N	1:C:104:LEU:HD12	2.09	0.68
1:A:54:GLU:O	1:A:79:SER:HB2	1.94	0.68
1:C:48:LEU:HA	1:C:51:ALA:HB3	1.76	0.68
1:A:213:LYS:NZ	1:A:217:GLU:HB3	2.09	0.68
1:A:63:LEU:HD21	1:A:104:LEU:HD22	1.76	0.68

Continued on next page...

Continued from previous page...

Atom-1	Atom-2	Interatomic distance (Å)	Clash overlap (Å)
1:D:55:ARG:HA	1:D:79:SER:CB	2.10	0.68
1:B:20:GLN:HE22	1:B:166:ALA:HB3	1.58	0.67
1:C:108:PRO:HG3	1:C:141:PHE:HD1	1.59	0.67
1:D:209:MET:SD	1:D:233:VAL:HG13	2.34	0.67
1:B:201:ARG:HD3	1:B:201:ARG:O	1.95	0.67
1:C:254:HIS:HB3	1:D:74:ARG:CA	2.16	0.67
1:C:80:TYR:OH	2:C:266:HLC:O4	2.07	0.67
1:B:188:LEU:N	1:B:188:LEU:HD12	2.10	0.67
1:A:112:GLU:HG3	1:A:137:SER:CB	2.23	0.67
1:A:257:MET:H	1:A:258:PRO:CD	2.06	0.67
1:B:57:LEU:HD12	1:B:77:ASN:ND2	2.10	0.67
1:C:55:ARG:CA	1:C:79:SER:OG	2.35	0.67
1:B:55:ARG:HA	1:B:79:SER:HB3	1.76	0.67
1:A:224:ILE:CB	1:A:228:THR:HB	2.23	0.67
1:C:96:HIS:ND1	1:C:122:GLU:HB3	2.10	0.67
1:C:36:THR:HB	1:C:39:GLU:HG3	1.76	0.67
1:A:30:MET:HE2	1:A:43:PHE:HE1	1.47	0.67
1:C:109:VAL:HG11	1:C:114:ARG:NE	2.10	0.67
1:B:77:ASN:C	1:B:78:VAL:CG1	2.63	0.67
1:A:242:ALA:HB2	1:A:251:LEU:HD12	1.78	0.66
1:A:36:THR:O	1:A:36:THR:CG2	2.41	0.66
1:B:56:LEU:N	1:B:79:SER:CB	2.57	0.66
2:C:266:HLC:CL1	1:D:250:VAL:CG2	2.80	0.66
1:C:147:ARG:NH2	1:C:148:ASN:CB	2.58	0.66
1:A:209:MET:HE1	1:A:233:VAL:HG11	1.76	0.66
1:A:224:ILE:HD12	1:A:228:THR:HG22	1.76	0.66
1:D:64:ASN:ND2	1:D:68:GLN:HB2	2.11	0.66
1:A:210:SER:CB	1:A:249:ILE:HG23	2.25	0.66
1:B:109:VAL:HG11	1:B:114:ARG:HH21	1.59	0.66
1:A:112:GLU:HG2	1:A:137:SER:CB	2.19	0.66
1:C:16:LEU:HD13	1:C:16:LEU:N	2.11	0.66
1:A:202:GLU:OE2	1:A:239:LYS:HD2	1.96	0.66
1:B:56:LEU:O	1:B:57:LEU:CB	2.44	0.65
1:B:57:LEU:HD23	1:B:58:LEU:N	2.11	0.65
1:A:193:PRO:HB2	1:A:195:ASN:N	2.10	0.65
1:A:193:PRO:CD	1:A:194:SER:CA	2.72	0.65
1:C:77:ASN:O	1:C:77:ASN:ND2	2.30	0.65
1:D:63:LEU:HD21	1:D:104:LEU:HD22	1.79	0.65
1:A:240:LEU:HD13	1:A:252:GLY:HA3	1.78	0.65
1:A:64:ASN:OD1	1:A:65:ASN:N	2.30	0.65
1:A:237:ILE:HD13	1:A:245:ARG:HB2	1.77	0.65

Continued on next page...

Continued from previous page...

Atom-1	Atom-2	Interatomic distance (Å)	Clash overlap (Å)
1:D:237:ILE:HG23	1:D:242:ALA:HB3	1.77	0.65
1:A:224:ILE:CG1	1:A:228:THR:HB	2.27	0.65
1:A:71:ARG:HH21	1:C:42:ALA:HB2	1.60	0.65
1:B:88:TYR:HA	1:B:93:TYR:HD2	1.62	0.65
1:B:67:ASN:CG	1:B:103:HIS:HB2	2.16	0.65
1:B:112:GLU:HG3	1:B:137:SER:HB3	1.79	0.65
1:C:17:THR:N	1:C:20:GLN:HB2	2.11	0.65
1:B:237:ILE:HG23	1:B:242:ALA:HB3	1.78	0.65
1:B:57:LEU:CD2	1:B:57:LEU:C	2.62	0.65
1:A:19:SER:OG	1:A:20:GLN:N	2.30	0.64
1:A:56:LEU:C	1:A:80:TYR:CE2	2.69	0.64
1:D:187:ASN:OD1	1:D:188:LEU:N	2.30	0.64
1:C:247:HIS:CE1	1:D:78:VAL:CG2	2.80	0.64
1:A:77:ASN:H	1:B:251:LEU:HD21	1.63	0.64
1:A:110:MET:CA	1:A:139:ILE:CD1	2.67	0.64
1:A:216:TRP:CZ2	1:A:220:THR:OG1	2.50	0.64
1:A:71:ARG:NH2	1:C:42:ALA:CB	2.61	0.64
1:B:179:HIS:NE2	1:B:183:ILE:HD11	2.12	0.64
1:C:200:GLN:OE1	1:C:200:GLN:HA	1.97	0.64
1:A:111:TRP:CE3	1:A:138:GLY:HA3	2.33	0.64
1:A:56:LEU:O	1:A:80:TYR:CD2	2.50	0.64
1:C:139:ILE:HG13	1:C:161:PRO:HB2	1.80	0.64
1:A:206:PHE:HD1	1:A:209:MET:HB2	1.63	0.64
1:B:96:HIS:HD2	1:B:122:GLU:HB2	1.56	0.64
1:C:147:ARG:NH2	1:C:148:ASN:HB3	2.12	0.64
1:D:205:ILE:HD13	1:D:222:LEU:CD1	2.27	0.64
1:A:197:PRO:HB2	1:A:199:SER:CB	2.27	0.63
1:A:206:PHE:CD1	1:A:206:PHE:O	2.51	0.63
1:B:57:LEU:HD12	1:B:77:ASN:HD21	1.63	0.63
1:C:235:ASN:O	1:C:239:LYS:HG3	1.98	0.63
1:A:219:ALA:CA	1:A:229:VAL:HG23	2.27	0.63
1:A:209:MET:CE	1:A:233:VAL:CG1	2.77	0.63
1:A:96:HIS:ND1	1:A:122:GLU:HB3	2.14	0.63
1:B:222:LEU:HD21	1:D:106:GLN:CD	2.12	0.63
1:A:71:ARG:HD3	1:C:38:ASN:HB3	1.79	0.63
1:C:247:HIS:NE2	1:D:78:VAL:CB	2.61	0.63
1:D:36:THR:OG1	1:D:39:GLU:HG3	1.97	0.63
1:C:12:LEU:O	1:C:173:CYS:SG	2.57	0.63
1:A:257:MET:H	1:A:258:PRO:HD2	1.63	0.63
1:B:67:ASN:CB	1:B:103:HIS:CD2	2.81	0.63
1:A:190:PRO:O	1:C:49:SER:OG	2.15	0.63

Continued on next page...

Continued from previous page...

Atom-1	Atom-2	Interatomic distance (Å)	Clash overlap (Å)
1:A:237:ILE:CG2	1:A:242:ALA:O	2.46	0.63
1:B:64:ASN:ND2	1:B:68:GLN:O	2.30	0.63
1:C:17:THR:H	1:C:20:GLN:HB2	1.64	0.63
1:A:102:ILE:HG23	1:A:106:GLN:NE2	2.11	0.63
1:D:111:TRP:HE3	1:D:137:SER:C	2.02	0.63
1:A:226:GLU:CG	1:A:230:LYS:HE3	2.29	0.62
1:A:209:MET:HE1	1:A:233:VAL:CG2	2.28	0.62
1:C:55:ARG:HD2	1:C:81:PRO:CD	2.24	0.62
1:A:209:MET:HE2	1:A:233:VAL:CG1	2.29	0.62
1:A:111:TRP:N	1:A:138:GLY:O	2.27	0.62
1:D:186:ALA:O	1:D:187:ASN:CG	2.38	0.62
1:A:10:ARG:NH2	1:A:143:ALA:HA	2.14	0.62
1:B:181:ALA:HA	1:B:184:ARG:HH21	1.62	0.62
1:A:233:VAL:HG11	1:A:245:ARG:HD2	1.81	0.62
1:A:77:ASN:N	1:B:251:LEU:CD2	2.62	0.62
1:A:215:ASN:O	1:A:226:GLU:HA	2.00	0.62
1:D:16:LEU:CD2	1:D:20:GLN:OE1	2.48	0.62
1:A:241:ASN:HB3	1:B:41:LYS:HD2	1.81	0.62
1:B:67:ASN:HB3	1:B:103:HIS:CB	2.02	0.62
1:C:81:PRO:O	1:C:85:LEU:HG	2.00	0.62
1:C:29:HIS:NE2	1:D:11:PRO:CA	2.62	0.62
1:B:63:LEU:HD12	1:B:150:ILE:C	2.15	0.62
1:D:17:THR:HG1	1:D:20:GLN:CB	2.13	0.62
1:A:96:HIS:CE1	1:A:122:GLU:HB3	2.35	0.61
1:B:181:ALA:CA	1:B:184:ARG:HH21	2.13	0.61
1:B:20:GLN:CD	1:B:166:ALA:HB1	2.19	0.61
1:C:56:LEU:HB3	1:C:156:ILE:HG12	1.82	0.61
1:A:242:ALA:CB	1:A:247:HIS:HD1	2.08	0.61
1:A:57:LEU:CD2	2:A:266:HLC:H9	2.30	0.61
1:C:43:PHE:CD1	1:C:46:GLN:OE1	2.53	0.61
1:C:43:PHE:HD1	1:C:46:GLN:OE1	1.83	0.61
1:D:58:LEU:N	1:D:77:ASN:HB2	2.15	0.61
1:A:57:LEU:CB	1:A:80:TYR:OH	2.46	0.61
1:B:109:VAL:CB	1:B:114:ARG:HH21	2.13	0.61
1:B:14:ALA:O	1:B:16:LEU:CD2	2.49	0.61
1:C:111:TRP:CB	1:C:138:GLY:N	2.59	0.61
1:A:179:HIS:NE2	1:A:183:ILE:HD11	2.15	0.61
1:B:40:LEU:HD23	1:B:76:LEU:CD2	2.31	0.61
1:A:30:MET:HE1	1:A:43:PHE:CD1	2.30	0.60
1:B:80:TYR:OH	2:B:266:HLC:O4	2.18	0.60
1:C:219:ALA:CA	1:C:224:ILE:O	2.49	0.60

Continued on next page...

Continued from previous page...

Atom-1	Atom-2	Interatomic distance (Å)	Clash overlap (Å)
1:C:88:TYR:HA	1:C:93:TYR:HD2	1.66	0.60
1:C:56:LEU:O	1:C:79:SER:CB	2.49	0.60
1:D:57:LEU:HA	1:D:77:ASN:CB	2.32	0.60
1:A:195:ASN:OD1	1:B:188:LEU:CD2	2.49	0.60
1:B:112:GLU:CG	1:B:137:SER:HB3	2.32	0.60
1:C:247:HIS:CE1	1:D:78:VAL:HG22	2.29	0.60
1:A:192:SER:CB	1:A:194:SER:HA	2.32	0.60
1:B:77:ASN:C	1:B:78:VAL:HG13	2.22	0.60
1:C:13:PRO:CA	1:C:173:CYS:SG	2.86	0.60
1:A:198:LEU:N	1:A:199:SER:CA	2.59	0.59
1:B:108:PRO:HG3	1:B:141:PHE:HD1	1.67	0.59
1:C:82:SER:OG	1:D:244:ASN:ND2	2.29	0.59
1:C:11:PRO:HB2	1:D:33:HIS:CE1	2.37	0.59
1:D:56:LEU:N	1:D:79:SER:CB	2.57	0.59
1:A:224:ILE:HD12	1:A:228:THR:CG2	2.31	0.59
1:C:109:VAL:HG11	1:C:114:ARG:HD2	1.54	0.59
1:B:187:ASN:HB3	1:B:188:LEU:HG	1.85	0.59
1:B:19:SER:O	1:B:22:TRP:N	2.36	0.59
1:B:48:LEU:CB	1:B:56:LEU:HD21	2.32	0.59
1:D:48:LEU:HD22	1:D:56:LEU:HG	1.84	0.59
1:C:211:ARG:HG2	1:C:211:ARG:O	2.03	0.59
1:C:56:LEU:O	1:C:79:SER:HB3	2.01	0.59
1:A:255:LEU:C	1:A:258:PRO:HD2	2.23	0.59
1:A:40:LEU:CD2	1:A:76:LEU:HD11	1.89	0.59
1:B:40:LEU:HD23	1:B:76:LEU:HD22	1.84	0.59
1:C:257:MET:CB	1:C:258:PRO:CD	2.74	0.59
1:C:82:SER:OG	1:D:246:THR:CG2	2.50	0.59
1:D:56:LEU:HD12	1:D:77:ASN:OD1	2.02	0.59
1:A:203:TYR:O	1:A:207:HIS:HB3	1.97	0.59
1:A:244:ASN:O	1:A:247:HIS:HB3	2.03	0.59
1:A:233:VAL:O	1:A:236:VAL:HB	2.03	0.58
1:C:96:HIS:CE1	1:C:122:GLU:HB3	2.38	0.58
1:D:218:ILE:O	1:D:222:LEU:HG	2.03	0.58
1:B:109:VAL:CG1	1:B:114:ARG:HH21	2.16	0.58
1:B:166:ALA:O	1:B:170:MET:HG3	2.01	0.58
1:D:111:TRP:CE3	1:D:137:SER:C	2.75	0.58
1:D:224:ILE:CG2	1:D:228:THR:CB	2.75	0.58
1:D:56:LEU:HD12	1:D:77:ASN:ND2	2.18	0.58
1:C:63:LEU:CD1	1:C:104:LEU:HD22	2.30	0.58
1:C:13:PRO:CG	1:D:29:HIS:CD2	2.83	0.58
1:A:227:ARG:O	1:A:231:PHE:CD2	2.56	0.58

Continued on next page...

Continued from previous page...

Atom-1	Atom-2	Interatomic distance (Å)	Clash overlap (Å)
1:D:64:ASN:C	1:D:64:ASN:OD1	2.41	0.58
1:A:206:PHE:HE2	1:A:252:GLY:O	1.85	0.58
1:C:206:PHE:HA	1:C:209:MET:HG3	1.85	0.58
1:A:227:ARG:CG	1:A:231:PHE:CE2	2.59	0.58
1:A:192:SER:CB	1:A:194:SER:CA	2.82	0.58
1:B:187:ASN:ND2	1:B:188:LEU:HA	2.17	0.58
1:B:63:LEU:O	1:B:149:ASN:CB	2.37	0.58
1:A:56:LEU:N	1:A:79:SER:OG	2.37	0.58
1:C:111:TRP:CZ2	2:C:266:HLC:H4	2.39	0.58
1:B:187:ASN:CG	1:B:188:LEU:C	2.62	0.57
1:C:175:THR:N	1:C:176:PRO:HD2	2.19	0.57
1:D:17:THR:OG1	1:D:20:GLN:OE1	2.15	0.57
1:B:56:LEU:O	1:B:80:TYR:CD2	2.57	0.57
1:C:108:PRO:C	1:C:109:VAL:HG23	2.23	0.57
1:A:199:SER:N	1:A:202:GLU:HB2	2.20	0.57
1:B:104:LEU:CD2	1:B:142:SER:HB2	2.33	0.57
1:C:52:PRO:HD3	1:C:167:LEU:HD21	1.85	0.57
1:A:203:TYR:O	1:A:207:HIS:N	2.36	0.57
1:A:88:TYR:HA	1:A:93:TYR:HD2	1.69	0.57
1:A:198:LEU:N	1:A:198:LEU:CD2	2.59	0.57
1:A:71:ARG:NH2	1:C:42:ALA:CA	2.68	0.57
1:B:111:TRP:CE3	1:B:138:GLY:HA3	2.39	0.57
1:A:111:TRP:CZ2	2:A:266:HLC:H6	2.40	0.57
1:A:148:ASN:OD1	1:A:150:ILE:HG22	2.05	0.57
1:A:190:PRO:HB2	1:A:192:SER:N	2.20	0.57
1:B:148:ASN:OD1	1:B:150:ILE:HG22	2.05	0.57
1:B:43:PHE:O	1:B:47:VAL:HG23	2.05	0.57
1:B:63:LEU:HD11	1:B:150:ILE:C	2.25	0.57
1:D:179:HIS:NE2	1:D:183:ILE:HD11	2.19	0.57
1:B:63:LEU:HB2	1:B:149:ASN:C	2.25	0.57
1:B:187:ASN:HB3	1:B:188:LEU:CB	2.35	0.57
1:C:53:SER:HB3	1:C:156:ILE:HG22	1.83	0.57
1:A:206:PHE:CE2	1:A:252:GLY:O	2.58	0.56
1:B:167:LEU:O	1:B:168:VAL:C	2.43	0.56
1:C:243:ASN:H	1:C:247:HIS:HD1	1.52	0.56
1:C:237:ILE:HG12	1:C:248:ALA:HB2	1.86	0.56
1:A:193:PRO:CD	1:A:194:SER:C	2.73	0.56
1:A:199:SER:H	1:A:202:GLU:HB2	1.70	0.56
1:C:44:LEU:CD1	1:C:77:ASN:HB3	2.35	0.56
1:A:209:MET:SD	1:A:218:ILE:HD13	2.45	0.56
1:C:102:ILE:HG23	1:C:114:ARG:NH2	2.08	0.56

Continued on next page...

Continued from previous page...

Atom-1	Atom-2	Interatomic distance (Å)	Clash overlap (Å)
1:C:11:PRO:CB	1:D:33:HIS:CE1	2.88	0.56
1:A:213:LYS:HE3	1:A:217:GLU:CB	2.35	0.56
1:A:25:LEU:CD1	1:B:25:LEU:HD13	2.35	0.56
1:B:226:GLU:OE2	1:B:230:LYS:HE2	2.05	0.56
1:B:79:SER:O	1:B:80:TYR:O	2.23	0.56
1:C:53:SER:CB	1:C:157:ALA:O	2.52	0.56
1:C:36:THR:HG22	1:C:37:GLU:H	1.70	0.56
1:A:13:PRO:HD3	1:A:173:CYS:SG	2.45	0.56
1:A:40:LEU:CD2	1:A:76:LEU:HD12	2.04	0.56
1:B:167:LEU:HD12	1:B:168:VAL:N	2.21	0.56
1:B:40:LEU:HD22	1:B:76:LEU:HD13	1.82	0.56
1:B:237:ILE:HG12	1:B:248:ALA:CB	2.35	0.56
1:D:64:ASN:OD1	1:D:67:ASN:N	2.38	0.56
1:B:48:LEU:HD13	1:B:56:LEU:HD22	1.86	0.56
1:B:57:LEU:HG	1:B:77:ASN:CG	2.24	0.56
1:A:41:LYS:CD	1:A:41:LYS:O	2.30	0.56
1:B:187:ASN:HB3	1:B:188:LEU:CG	2.35	0.56
1:A:77:ASN:N	1:B:251:LEU:HD21	2.20	0.56
1:C:11:PRO:HG2	1:D:33:HIS:ND1	2.18	0.56
1:C:20:GLN:HE22	1:C:166:ALA:CB	2.19	0.56
1:C:62:ARG:HG2	1:C:73:GLU:OE2	2.06	0.56
1:D:85:LEU:HD22	2:D:266:HLC:H14	1.88	0.56
1:B:36:THR:OG1	1:B:39:GLU:HG3	2.06	0.56
1:C:36:THR:CG2	1:C:37:GLU:N	2.67	0.56
1:A:198:LEU:HB2	1:A:203:TYR:HB2	1.88	0.55
1:B:175:THR:N	1:B:176:PRO:HD2	2.20	0.55
1:C:57:LEU:HD11	2:C:266:HLC:H13	1.87	0.55
1:A:206:PHE:HA	1:A:209:MET:HG2	1.89	0.55
1:A:216:TRP:CZ3	1:A:220:THR:OG1	2.56	0.55
1:A:257:MET:N	1:A:258:PRO:CD	2.69	0.55
1:C:251:LEU:O	1:C:254:HIS:CE1	2.60	0.55
1:D:88:TYR:HA	1:D:93:TYR:HD2	1.70	0.55
1:A:17:THR:O	1:A:21:GLN:N	2.33	0.55
1:C:36:THR:CG2	1:C:37:GLU:H	2.19	0.55
1:A:62:ARG:HG3	1:A:73:GLU:OE2	2.05	0.55
1:B:109:VAL:CG1	1:B:114:ARG:HE	2.17	0.55
1:A:82:SER:HB3	1:B:244:ASN:HD21	1.70	0.55
1:C:63:LEU:CD2	1:C:104:LEU:HD22	2.36	0.55
1:C:74:ARG:HD3	1:C:76:LEU:HD21	1.88	0.55
1:C:33:HIS:HD2	1:D:10:ARG:CB	2.20	0.55
1:A:198:LEU:CB	1:A:203:TYR:HB2	2.36	0.55

Continued on next page...

Continued from previous page...

Atom-1	Atom-2	Interatomic distance (Å)	Clash overlap (Å)
1:A:108:PRO:HB3	1:A:141:PHE:CD1	2.42	0.55
1:B:211:ARG:O	1:B:211:ARG:HG2	2.06	0.55
1:B:222:LEU:CD2	1:D:106:GLN:CD	2.65	0.55
1:C:48:LEU:HD12	1:C:48:LEU:C	2.26	0.55
1:C:111:TRP:CZ3	1:C:138:GLY:HA3	2.27	0.54
1:A:255:LEU:C	1:A:257:MET:H	2.11	0.54
1:B:63:LEU:HD11	1:B:150:ILE:O	2.07	0.54
1:C:56:LEU:HD11	1:C:77:ASN:HD21	1.72	0.54
1:C:83:ASP:O	1:C:86:ASP:OD1	2.26	0.54
1:D:188:LEU:CD1	1:D:188:LEU:C	2.75	0.54
1:A:215:ASN:HB3	1:A:226:GLU:CG	2.34	0.54
1:A:56:LEU:HD23	1:A:57:LEU:N	2.22	0.54
1:B:56:LEU:O	1:B:80:TYR:CE2	2.61	0.54
1:C:111:TRP:HE3	1:C:138:GLY:N	2.01	0.54
1:A:254:HIS:CE1	1:B:74:ARG:CG	2.84	0.54
1:A:212:GLY:O	1:A:213:LYS:CD	2.53	0.54
1:A:36:THR:CG2	1:A:39:GLU:H	2.19	0.54
1:B:198:LEU:CD2	1:B:236:VAL:HG13	2.38	0.54
1:B:79:SER:O	1:B:80:TYR:C	2.45	0.54
1:D:62:ARG:HG2	1:D:73:GLU:OE2	2.08	0.54
1:A:193:PRO:HD2	1:A:194:SER:C	2.28	0.54
1:A:254:HIS:CE1	1:B:74:ARG:CZ	2.90	0.54
1:A:56:LEU:HD22	1:A:78:VAL:HG21	1.90	0.54
1:B:180:GLN:OE1	1:B:180:GLN:HA	2.07	0.54
1:B:56:LEU:O	1:B:57:LEU:HB2	2.08	0.54
1:B:211:ARG:NH1	1:D:146:GLU:OE2	2.40	0.54
1:C:104:LEU:N	1:C:104:LEU:CD1	2.71	0.54
1:C:45:ASP:O	1:C:48:LEU:HG	2.08	0.54
1:A:180:GLN:OE1	1:A:180:GLN:HA	2.08	0.53
1:A:242:ALA:CB	1:A:247:HIS:ND1	2.69	0.53
1:B:62:ARG:HD2	1:B:71:ARG:HH21	1.71	0.53
1:A:17:THR:HG22	1:A:18:ALA:H	1.69	0.53
1:B:15:GLY:C	1:B:16:LEU:HD23	2.29	0.53
1:C:253:MET:HE2	1:C:257:MET:CE	2.39	0.53
1:C:44:LEU:CD1	1:C:77:ASN:HD22	2.17	0.53
1:D:56:LEU:HD12	1:D:77:ASN:CG	2.28	0.53
1:C:93:TYR:OH	1:C:129:GLU:HG2	2.08	0.53
1:A:23:THR:O	1:A:26:GLU:HB2	2.09	0.53
1:C:50:GLN:OE1	1:C:50:GLN:N	2.42	0.53
1:D:202:GLU:HG2	1:D:232:HIS:HB3	1.90	0.53
1:A:96:HIS:CE1	1:A:122:GLU:CB	2.91	0.53

Continued on next page...

Continued from previous page...

Atom-1	Atom-2	Interatomic distance (Å)	Clash overlap (Å)
1:A:175:THR:N	1:A:176:PRO:HD2	2.24	0.53
1:C:253:MET:CE	1:C:257:MET:HE3	2.39	0.53
1:A:198:LEU:HG	1:A:200:GLN:N	2.24	0.52
1:A:245:ARG:HH11	1:A:245:ARG:CG	2.21	0.52
1:B:245:ARG:NH1	1:B:245:ARG:HG2	2.23	0.52
1:D:58:LEU:H	1:D:77:ASN:CB	2.16	0.52
1:A:179:HIS:HE2	1:A:183:ILE:HD11	1.73	0.52
1:A:206:PHE:CG	1:A:206:PHE:O	2.62	0.52
1:A:206:PHE:HA	1:A:209:MET:CG	2.38	0.52
1:A:209:MET:HE1	1:A:233:VAL:CG1	2.39	0.52
1:B:14:ALA:O	1:B:16:LEU:HD22	2.09	0.52
1:C:111:TRP:CH2	2:C:266:HLC:C4	2.92	0.52
1:C:12:LEU:HD12	1:C:13:PRO:HD2	1.91	0.52
1:B:179:HIS:HE2	1:B:183:ILE:HD11	1.72	0.52
1:C:237:ILE:HG12	1:C:248:ALA:CB	2.38	0.52
1:A:198:LEU:H	1:A:199:SER:HA	1.70	0.52
1:A:205:ILE:HD13	1:A:232:HIS:HB3	1.90	0.52
1:C:33:HIS:CD2	1:D:10:ARG:CB	2.93	0.52
1:C:36:THR:HG22	1:C:38:ASN:N	2.22	0.52
1:B:167:LEU:HA	1:B:170:MET:HB2	1.92	0.52
1:A:205:ILE:CD1	1:A:232:HIS:HB3	2.40	0.52
1:B:198:LEU:CD1	1:B:236:VAL:HG13	2.38	0.52
1:B:56:LEU:HG	1:B:79:SER:OG	2.10	0.52
1:C:224:ILE:CG2	1:C:228:THR:HB	2.40	0.52
1:C:111:TRP:HE3	1:C:137:SER:C	2.13	0.52
1:C:20:GLN:HE22	1:C:166:ALA:HB1	1.74	0.52
1:A:104:LEU:HD12	1:A:104:LEU:N	2.24	0.52
1:A:215:ASN:OD1	1:A:230:LYS:HG3	2.10	0.52
1:A:36:THR:HG22	1:A:39:GLU:CD	2.30	0.52
1:B:151:GLY:HA2	1:B:179:HIS:HE1	1.75	0.52
1:D:224:ILE:HG21	1:D:228:THR:HB	1.87	0.52
1:A:93:TYR:OH	1:A:129:GLU:HG2	2.10	0.51
1:C:245:ARG:HG2	1:C:245:ARG:HH11	1.75	0.51
1:C:66:GLN:O	1:C:103:HIS:HD2	1.93	0.51
1:A:18:ALA:O	1:A:19:SER:C	2.45	0.51
1:B:226:GLU:HG2	1:B:230:LYS:HG3	1.91	0.51
1:C:245:ARG:NH1	1:C:245:ARG:HG2	2.25	0.51
1:A:213:LYS:CE	1:A:217:GLU:HB3	2.39	0.51
1:A:213:LYS:HE3	1:A:217:GLU:HB2	1.93	0.51
1:C:64:ASN:OD1	1:C:68:GLN:HG2	2.10	0.51
1:D:10:ARG:N	1:D:11:PRO:HD2	2.24	0.51

Continued on next page...

Continued from previous page...

Atom-1	Atom-2	Interatomic distance (Å)	Clash overlap (Å)
1:A:193:PRO:HD2	1:A:194:SER:CA	2.37	0.51
1:B:185:VAL:O	1:B:185:VAL:HG12	2.10	0.51
1:B:245:ARG:HG2	1:B:245:ARG:HH11	1.74	0.51
1:C:106:GLN:O	1:C:106:GLN:HG3	2.09	0.51
1:C:48:LEU:HA	1:C:51:ALA:CB	2.39	0.51
1:B:187:ASN:C	1:B:188:LEU:HD12	2.31	0.51
1:B:57:LEU:O	1:B:57:LEU:HD23	2.08	0.51
1:B:57:LEU:CA	1:B:77:ASN:CB	2.83	0.51
1:C:42:ALA:O	1:C:46:GLN:HG3	2.10	0.51
1:C:82:SER:CB	1:D:244:ASN:ND2	2.70	0.51
1:D:20:GLN:HE22	1:D:166:ALA:CB	2.23	0.51
1:B:188:LEU:O	1:B:189:PRO:C	2.49	0.51
1:D:219:ALA:HB1	1:D:224:ILE:O	2.11	0.51
1:C:219:ALA:HA	1:C:224:ILE:O	2.11	0.51
1:A:205:ILE:HD13	1:A:232:HIS:CB	2.40	0.51
1:A:227:ARG:O	1:A:231:PHE:HD2	1.92	0.51
1:C:14:ALA:N	1:C:173:CYS:SG	2.84	0.51
1:A:209:MET:HE2	1:A:233:VAL:HG13	1.92	0.50
1:B:198:LEU:HD22	1:B:236:VAL:HG13	1.92	0.50
1:B:48:LEU:HD22	1:B:56:LEU:HD21	0.51	0.50
1:D:185:VAL:O	1:D:186:ALA:HB3	2.11	0.50
1:D:17:THR:HG1	1:D:20:GLN:HB2	1.76	0.50
1:C:104:LEU:H	1:C:104:LEU:CD1	2.24	0.50
1:C:13:PRO:HG3	1:D:29:HIS:CG	2.46	0.50
1:D:224:ILE:HG23	1:D:228:THR:HB	1.86	0.50
1:A:137:SER:OG	1:A:159:ARG:HG2	2.11	0.50
1:B:198:LEU:HD13	1:B:236:VAL:HG13	1.93	0.50
1:C:56:LEU:CA	1:C:79:SER:HB3	2.39	0.50
1:D:242:ALA:HA	1:D:247:HIS:CE1	2.46	0.50
1:A:204:ASP:HB3	1:A:222:LEU:HD11	1.93	0.50
1:A:87:GLN:HG2	1:A:93:TYR:HE2	1.76	0.50
1:C:64:ASN:CG	1:C:68:GLN:HG2	2.32	0.50
1:B:64:ASN:OD1	1:B:66:GLN:O	2.30	0.50
1:C:201:ARG:O	1:C:205:ILE:HG12	2.11	0.50
1:D:93:TYR:OH	1:D:129:GLU:HG2	2.12	0.50
1:A:209:MET:CE	1:A:245:ARG:NE	2.65	0.50
1:B:106:GLN:O	1:B:107:GLY:O	2.30	0.50
1:B:223:ASP:OD1	1:B:223:ASP:O	2.30	0.50
1:A:62:ARG:CD	1:A:73:GLU:OE2	2.60	0.50
1:D:186:ALA:O	1:D:187:ASN:OD1	2.30	0.50
1:A:194:SER:O	1:A:195:ASN:OD1	2.30	0.50

Continued on next page...

Continued from previous page...

Atom-1	Atom-2	Interatomic distance (Å)	Clash overlap (Å)
1:B:64:ASN:OD1	1:B:68:GLN:O	2.30	0.50
1:D:208:TRP:CZ3	1:D:211:ARG:HD2	2.47	0.50
1:A:195:ASN:OD1	1:B:188:LEU:HD21	2.10	0.49
1:C:130:ALA:HB1	1:C:135:MET:HB2	1.94	0.49
1:A:17:THR:CG2	1:A:18:ALA:N	2.74	0.49
1:A:192:SER:CA	1:A:194:SER:HA	2.42	0.49
1:B:104:LEU:HD22	1:B:142:SER:HB2	1.93	0.49
1:C:254:HIS:CB	1:D:74:ARG:HA	2.22	0.49
1:B:67:ASN:CA	1:B:103:HIS:CD2	2.94	0.49
1:C:93:TYR:CD1	1:C:126:PHE:HD1	2.30	0.49
1:B:188:LEU:CD1	1:B:188:LEU:N	2.75	0.49
1:D:48:LEU:CD2	1:D:56:LEU:HD21	2.27	0.49
1:B:130:ALA:HB1	1:B:135:MET:HB2	1.95	0.49
1:B:16:LEU:O	1:B:17:THR:O	2.31	0.49
1:B:219:ALA:CB	1:B:224:ILE:O	2.60	0.49
1:B:57:LEU:HA	1:B:77:ASN:HB3	1.91	0.49
1:D:104:LEU:HG	1:D:142:SER:HB2	1.94	0.49
1:C:87:GLN:HG2	1:C:93:TYR:HE2	1.77	0.49
1:D:187:ASN:O	1:D:188:LEU:CB	2.60	0.49
1:B:93:TYR:OH	1:B:129:GLU:HG2	2.11	0.49
1:D:245:ARG:NH1	1:D:245:ARG:HG2	2.28	0.49
1:B:225:SER:O	1:B:228:THR:HB	2.12	0.49
1:C:106:GLN:O	1:C:107:GLY:O	2.30	0.49
1:C:187:ASN:CG	1:C:188:LEU:H	2.14	0.49
1:A:130:ALA:HB1	1:A:135:MET:HB2	1.94	0.49
1:A:193:PRO:CG	1:A:194:SER:C	2.81	0.49
1:B:55:ARG:HH12	1:B:134:GLY:HA3	1.78	0.49
1:B:87:GLN:HG2	1:B:93:TYR:HE2	1.78	0.49
1:C:111:TRP:CE3	1:C:137:SER:C	2.86	0.49
1:C:254:HIS:CB	1:D:73:GLU:O	2.61	0.49
1:C:186:ALA:O	1:C:187:ASN:OD1	2.30	0.48
1:D:175:THR:N	1:D:176:PRO:HD2	2.29	0.48
1:B:67:ASN:HB2	1:B:103:HIS:CG	2.19	0.48
1:C:16:LEU:HB3	1:C:20:GLN:HB3	1.95	0.48
1:C:16:LEU:HB3	1:C:20:GLN:CB	2.43	0.48
1:A:111:TRP:HB2	1:A:137:SER:HA	1.94	0.48
1:C:180:GLN:HG3	1:D:184:ARG:NH2	2.28	0.48
1:C:87:GLN:NE2	1:C:129:GLU:CG	2.77	0.48
1:A:213:LYS:HE3	1:A:217:GLU:HB3	1.95	0.48
1:C:111:TRP:CG	1:C:138:GLY:N	2.81	0.48
1:B:242:ALA:HA	1:B:247:HIS:CE1	2.49	0.48

Continued on next page...

Continued from previous page...

Atom-1	Atom-2	Interatomic distance (Å)	Clash overlap (Å)
1:C:54:GLU:O	1:C:79:SER:OG	2.30	0.48
1:D:15:GLY:O	1:D:16:LEU:HG	2.14	0.48
1:B:63:LEU:HB2	1:B:149:ASN:CA	2.44	0.48
1:C:14:ALA:CB	1:C:169:ALA:HB1	2.43	0.48
1:D:130:ALA:HB1	1:D:135:MET:HB2	1.96	0.48
1:D:17:THR:OG1	1:D:20:GLN:HB2	2.13	0.48
1:A:199:SER:O	1:A:200:GLN:C	2.52	0.48
1:C:104:LEU:H	1:C:104:LEU:HD12	1.78	0.48
1:C:111:TRP:CD2	1:C:138:GLY:N	2.71	0.48
1:A:219:ALA:CB	1:A:229:VAL:CG2	2.78	0.48
1:D:180:GLN:O	1:D:184:ARG:HG3	2.14	0.48
1:B:148:ASN:O	1:B:149:ASN:C	2.51	0.47
1:C:87:GLN:NE2	1:C:129:GLU:HG2	2.29	0.47
1:C:148:ASN:OD1	1:C:150:ILE:HG22	2.14	0.47
1:B:226:GLU:CD	1:B:230:LYS:HE2	2.33	0.47
1:C:74:ARG:HE	1:C:76:LEU:HD23	1.78	0.47
1:B:93:TYR:CD1	1:B:126:PHE:HD1	2.32	0.47
1:B:222:LEU:HD23	1:D:106:GLN:NE2	2.06	0.47
1:B:17:THR:CG2	1:B:18:ALA:N	2.77	0.47
1:B:63:LEU:HG	1:B:150:ILE:C	2.35	0.47
1:A:76:LEU:HD23	1:A:76:LEU:C	2.35	0.47
1:C:253:MET:CE	1:C:257:MET:CE	2.93	0.47
1:A:203:TYR:O	1:A:207:HIS:CA	2.60	0.47
1:B:14:ALA:O	1:B:16:LEU:HD23	2.13	0.47
1:C:202:GLU:HG2	1:C:236:VAL:CG2	2.45	0.47
1:D:108:PRO:HB3	1:D:139:ILE:HD11	1.96	0.47
1:D:225:SER:C	1:D:227:ARG:N	2.68	0.47
1:D:57:LEU:HD13	2:D:266:HLC:H9	1.96	0.47
1:A:104:LEU:HG	1:A:142:SER:HB2	1.97	0.47
1:A:205:ILE:O	1:A:209:MET:CG	2.26	0.47
1:A:111:TRP:CH2	2:A:266:HLC:H6	2.49	0.47
1:B:48:LEU:HD21	1:B:56:LEU:CD2	2.16	0.47
1:B:63:LEU:HD11	1:B:151:GLY:N	2.29	0.47
1:A:210:SER:HA	1:A:249:ILE:CG1	2.39	0.47
1:D:34:ILE:O	1:D:184:ARG:HD2	2.14	0.47
1:D:20:GLN:HE22	1:D:166:ALA:HB1	1.80	0.47
1:B:108:PRO:HG3	1:B:141:PHE:CD1	2.47	0.47
1:B:242:ALA:HB3	1:B:248:ALA:HB2	1.97	0.47
1:C:52:PRO:HB2	1:C:161:PRO:HG3	1.96	0.47
1:C:198:LEU:HD21	1:C:255:LEU:HD13	1.96	0.47
1:D:93:TYR:CD1	1:D:126:PHE:HD1	2.33	0.47

Continued on next page...

Continued from previous page...

Atom-1	Atom-2	Interatomic distance (Å)	Clash overlap (Å)
1:A:57:LEU:HB2	1:A:80:TYR:HE2	0.70	0.47
1:A:96:HIS:ND1	1:A:122:GLU:CB	2.78	0.47
1:C:247:HIS:CE1	1:D:78:VAL:HG21	2.50	0.47
1:D:52:PRO:O	1:D:53:SER:HB2	2.15	0.47
1:A:205:ILE:CG2	1:A:233:VAL:HG22	2.45	0.47
1:B:87:GLN:NE2	1:B:129:GLU:CG	2.78	0.47
1:C:103:HIS:O	1:C:106:GLN:HG2	2.15	0.47
1:C:64:ASN:ND2	1:C:68:GLN:CG	2.75	0.47
1:C:244:ASN:HD21	1:D:82:SER:CB	2.28	0.47
1:A:65:ASN:HD22	1:D:243:ASN:HB3	1.77	0.46
1:B:104:LEU:HD23	1:B:142:SER:HB2	1.96	0.46
1:B:67:ASN:OD1	1:B:68:GLN:N	2.48	0.46
1:B:96:HIS:NE2	1:B:122:GLU:HG3	2.31	0.46
1:C:146:GLU:O	1:C:147:ARG:C	2.53	0.46
1:A:224:ILE:HG13	1:A:228:THR:HB	1.98	0.46
1:A:244:ASN:HB2	1:A:247:HIS:HB3	1.96	0.46
1:C:201:ARG:HD3	1:C:201:ARG:HA	1.43	0.46
1:C:243:ASN:H	1:C:247:HIS:CE1	2.33	0.46
1:B:186:ALA:O	1:B:188:LEU:HD11	2.12	0.46
1:B:226:GLU:OE2	1:B:230:LYS:CE	2.63	0.46
1:B:51:ALA:HA	1:B:52:PRO:HD3	1.80	0.46
1:C:140:THR:CG2	1:C:141:PHE:N	2.78	0.46
1:C:29:HIS:CD2	1:D:11:PRO:CB	2.91	0.46
1:B:198:LEU:HD22	1:B:236:VAL:HA	1.97	0.46
1:D:180:GLN:OE1	1:D:180:GLN:HA	2.16	0.46
1:C:109:VAL:CB	1:C:114:ARG:HH11	2.24	0.46
1:C:218:ILE:HG22	1:C:229:VAL:HG21	1.97	0.46
1:D:16:LEU:HD23	1:D:20:GLN:OE1	2.15	0.46
1:C:246:THR:OG1	1:D:86:ASP:OD1	2.10	0.46
1:A:36:THR:HG21	1:A:39:GLU:HG3	1.93	0.46
1:A:66:GLN:O	1:A:103:HIS:HD2	1.98	0.46
1:B:108:PRO:CG	1:B:172:ASN:OD1	2.63	0.46
1:D:87:GLN:HG2	1:D:93:TYR:HE2	1.81	0.46
1:C:242:ALA:HA	1:C:247:HIS:CE1	2.51	0.46
1:C:253:MET:HE2	1:C:257:MET:HE3	1.98	0.46
1:D:179:HIS:HE2	1:D:183:ILE:HD11	1.80	0.46
1:D:205:ILE:CD1	1:D:222:LEU:CD1	2.94	0.46
1:D:48:LEU:HB2	1:D:56:LEU:CD2	2.46	0.46
1:B:167:LEU:O	1:B:170:MET:N	2.49	0.46
1:C:17:THR:O	1:C:20:GLN:N	2.49	0.46
1:B:16:LEU:CD2	1:B:16:LEU:N	2.64	0.45

Continued on next page...

Continued from previous page...

Atom-1	Atom-2	Interatomic distance (Å)	Clash overlap (Å)
1:C:14:ALA:HB1	1:C:169:ALA:HB1	1.97	0.45
1:B:110:MET:SD	1:B:139:ILE:HD12	2.56	0.45
1:C:16:LEU:CB	1:C:20:GLN:CB	2.94	0.45
1:C:180:GLN:OE1	1:C:180:GLN:HA	2.17	0.45
1:C:208:TRP:HZ3	1:C:211:ARG:HD3	1.80	0.45
1:A:42:ALA:O	1:A:45:ASP:HB3	2.16	0.45
1:C:254:HIS:CE1	1:D:74:ARG:CG	2.99	0.45
1:A:196:MET:O	1:A:197:PRO:O	2.35	0.45
1:B:16:LEU:O	1:B:17:THR:C	2.54	0.45
1:B:198:LEU:HD11	1:B:240:LEU:HD21	1.98	0.45
1:A:209:MET:CE	1:A:233:VAL:CG2	2.94	0.45
1:D:208:TRP:HB3	1:D:218:ILE:HG12	1.97	0.45
1:D:56:LEU:CD1	1:D:77:ASN:OD1	2.65	0.45
1:C:111:TRP:CZ2	2:C:266:HLC:C3	2.99	0.45
1:D:181:ALA:O	1:D:184:ARG:HB2	2.17	0.45
1:B:64:ASN:CG	1:B:68:GLN:O	2.55	0.45
1:D:216:TRP:CH2	1:D:220:THR:HG22	2.52	0.45
1:D:66:GLN:O	1:D:103:HIS:HD2	1.99	0.45
1:B:15:GLY:HA3	1:B:16:LEU:HA	1.51	0.45
1:C:80:TYR:HA	1:C:81:PRO:HD3	1.86	0.45
1:D:206:PHE:HA	1:D:209:MET:HG3	1.99	0.45
1:D:216:TRP:HA	1:D:216:TRP:CE3	2.52	0.45
1:A:237:ILE:HG12	1:A:245:ARG:HA	1.99	0.44
1:B:240:LEU:O	1:B:241:ASN:HB2	2.16	0.44
1:C:49:SER:OG	1:C:50:GLN:N	2.49	0.44
1:D:48:LEU:HB2	1:D:56:LEU:HD21	1.98	0.44
1:A:188:LEU:C	1:A:188:LEU:HD12	2.36	0.44
1:A:198:LEU:HD12	1:A:203:TYR:CB	2.47	0.44
1:A:210:SER:HB2	1:A:249:ILE:CG2	2.46	0.44
1:B:52:PRO:O	1:B:161:PRO:HD3	2.16	0.44
1:C:16:LEU:CB	1:C:20:GLN:HB3	2.47	0.44
1:C:20:GLN:NE2	1:C:166:ALA:HB1	2.32	0.44
1:A:190:PRO:HG2	1:C:50:GLN:HE22	1.82	0.44
1:C:52:PRO:HD3	1:C:167:LEU:HD23	1.98	0.44
1:A:148:ASN:O	1:A:149:ASN:C	2.55	0.44
1:A:52:PRO:O	1:A:161:PRO:HD3	2.17	0.44
1:A:214:THR:N	1:A:217:GLU:OE1	2.41	0.44
1:A:242:ALA:HA	1:A:247:HIS:CE1	2.53	0.44
1:B:223:ASP:CG	1:B:223:ASP:O	2.55	0.44
1:A:185:VAL:HG13	1:A:186:ALA:N	2.32	0.44
1:B:87:GLN:NE2	1:B:129:GLU:HG2	2.33	0.44

Continued on next page...

Continued from previous page...

Atom-1	Atom-2	Interatomic distance (Å)	Clash overlap (Å)
1:B:19:SER:O	1:B:20:GLN:C	2.55	0.44
1:D:245:ARG:HG2	1:D:245:ARG:HH11	1.81	0.44
1:B:48:LEU:CB	1:B:56:LEU:CD2	2.92	0.44
1:D:111:TRP:CZ3	1:D:137:SER:O	2.69	0.44
1:B:243:ASN:H	1:B:247:HIS:CE1	2.35	0.44
1:D:148:ASN:O	1:D:149:ASN:C	2.56	0.44
1:D:213:LYS:HB2	1:D:218:ILE:HG12	1.99	0.44
1:D:87:GLN:NE2	1:D:129:GLU:CG	2.81	0.44
1:A:233:VAL:CG1	1:A:245:ARG:HD2	2.45	0.44
1:B:217:GLU:O	1:B:220:THR:HB	2.16	0.44
1:C:199:SER:O	1:C:203:TYR:HB2	2.18	0.44
1:C:251:LEU:O	1:C:254:HIS:ND1	2.51	0.44
1:B:63:LEU:CD2	1:B:104:LEU:CD1	2.71	0.44
1:D:87:GLN:NE2	1:D:129:GLU:HG2	2.33	0.44
1:A:84:TRP:O	1:A:88:TYR:HB2	2.18	0.43
1:B:96:HIS:NE2	1:B:122:GLU:CB	2.79	0.43
1:C:17:THR:O	1:C:18:ALA:C	2.57	0.43
1:D:63:LEU:HD11	1:D:151:GLY:HA3	2.00	0.43
1:D:89:MET:HG3	2:D:266:HLC:CL1	2.55	0.43
1:A:51:ALA:HA	1:A:52:PRO:HD3	1.80	0.43
1:B:121:ALA:O	1:B:125:ARG:HB3	2.18	0.43
1:D:225:SER:C	1:D:227:ARG:H	2.20	0.43
1:C:82:SER:HG	1:D:246:THR:HG23	1.81	0.43
1:C:28:ILE:HG22	1:D:28:ILE:HG22	2.01	0.43
1:D:30:MET:HA	1:D:33:HIS:HD2	1.83	0.43
1:A:257:MET:CB	1:A:258:PRO:HD3	2.31	0.43
1:B:201:ARG:C	1:B:201:ARG:HD3	2.37	0.43
1:B:63:LEU:HG	1:B:151:GLY:N	2.33	0.43
1:C:64:ASN:HD21	1:C:68:GLN:CG	2.26	0.43
1:C:87:GLN:HE22	1:C:129:GLU:CG	2.32	0.43
1:A:213:LYS:HZ1	1:A:217:GLU:HB3	1.82	0.43
1:B:236:VAL:O	1:B:240:LEU:HG	2.18	0.43
1:B:56:LEU:HA	1:B:155:SER:O	2.18	0.43
1:D:216:TRP:HA	1:D:216:TRP:HE3	1.82	0.43
1:D:76:LEU:O	1:D:76:LEU:HG	2.19	0.43
1:A:25:LEU:HD13	1:B:25:LEU:CD1	2.42	0.43
1:B:80:TYR:O	1:B:81:PRO:O	2.37	0.43
1:D:219:ALA:O	1:D:223:ASP:N	2.50	0.43
1:A:111:TRP:CE3	1:A:138:GLY:CA	3.00	0.43
1:A:17:THR:HG22	1:A:19:SER:H	1.83	0.43
1:A:198:LEU:HD12	1:A:203:TYR:HB2	2.00	0.43

Continued on next page...

Continued from previous page...

Atom-1	Atom-2	Interatomic distance (Å)	Clash overlap (Å)
1:A:97:ASP:HA	1:A:98:PRO:HD3	1.77	0.43
1:A:25:LEU:HD12	1:A:25:LEU:HA	1.69	0.43
1:A:71:ARG:HH21	1:C:42:ALA:CB	2.27	0.43
1:B:63:LEU:CG	1:B:150:ILE:C	2.87	0.43
1:B:63:LEU:HB2	1:B:149:ASN:HA	2.00	0.43
1:A:111:TRP:CB	1:A:138:GLY:H	2.08	0.43
1:C:237:ILE:HG23	1:C:242:ALA:CB	2.30	0.43
1:A:40:LEU:CG	1:A:76:LEU:HD11	2.44	0.42
1:B:48:LEU:HB2	1:B:56:LEU:CD2	2.50	0.42
1:C:63:LEU:HD21	1:C:104:LEU:HD21	1.98	0.42
1:A:107:GLY:HA2	1:A:108:PRO:HA	1.76	0.42
1:A:218:ILE:HB	1:A:229:VAL:HG11	2.01	0.42
1:B:187:ASN:OD1	1:B:188:LEU:C	2.58	0.42
1:D:85:LEU:CD2	2:D:266:HLC:H14	2.48	0.42
1:A:104:LEU:CD1	1:A:104:LEU:N	2.82	0.42
1:A:209:MET:CE	1:A:233:VAL:HG21	2.40	0.42
1:B:237:ILE:HG12	1:B:248:ALA:HB2	2.00	0.42
1:C:48:LEU:HD12	1:C:49:SER:CA	2.47	0.42
1:C:56:LEU:CD1	1:C:77:ASN:HD21	2.32	0.42
1:C:209:MET:HB3	1:C:209:MET:HE3	1.77	0.42
1:D:105:GLY:HA2	1:D:142:SER:O	2.19	0.42
1:D:55:ARG:HH12	1:D:134:GLY:HA3	1.84	0.42
1:D:17:THR:HG23	1:D:20:GLN:OE1	2.19	0.42
1:B:107:GLY:HA2	1:B:108:PRO:HD3	1.82	0.42
1:A:66:GLN:O	1:A:67:ASN:HB2	2.20	0.42
1:A:96:HIS:CE1	1:A:122:GLU:HG3	2.54	0.42
1:B:20:GLN:OE1	1:B:166:ALA:HB1	2.19	0.42
1:C:108:PRO:C	1:C:109:VAL:CG2	2.87	0.42
1:A:62:ARG:C	1:A:63:LEU:HD12	2.40	0.42
1:B:219:ALA:HA	1:B:224:ILE:O	2.20	0.42
1:C:57:LEU:CD1	2:C:266:HLC:H13	2.49	0.42
1:A:138:GLY:O	1:A:139:ILE:HD13	2.19	0.42
1:C:96:HIS:CE1	1:C:122:GLU:CB	3.02	0.42
1:D:208:TRP:CE3	1:D:211:ARG:HD2	2.55	0.42
1:D:48:LEU:HD13	1:D:56:LEU:CD2	2.41	0.42
1:C:244:ASN:OD1	1:C:247:HIS:CB	2.64	0.42
1:C:82:SER:HA	1:C:85:LEU:HD12	2.02	0.42
1:A:190:PRO:CA	1:A:191:ALA:CB	2.50	0.42
1:B:48:LEU:HB2	1:B:56:LEU:HD21	2.00	0.42
1:C:140:THR:HG22	1:C:141:PHE:N	2.34	0.42
1:C:96:HIS:ND1	1:C:122:GLU:CB	2.82	0.42

Continued on next page...

Continued from previous page...

Atom-1	Atom-2	Interatomic distance (Å)	Clash overlap (Å)
1:D:213:LYS:HB2	1:D:218:ILE:CG1	2.49	0.42
1:C:247:HIS:CD2	1:D:78:VAL:HG22	2.34	0.42
1:A:151:GLY:HA2	1:A:179:HIS:HE1	1.85	0.41
1:A:222:LEU:HD23	1:A:222:LEU:HA	1.85	0.41
1:B:257:MET:HB2	1:B:258:PRO:HD3	2.01	0.41
1:C:56:LEU:HA	1:C:155:SER:O	2.20	0.41
1:C:187:ASN:OD1	1:C:187:ASN:C	2.58	0.41
1:B:56:LEU:HB3	1:B:156:ILE:HG13	2.02	0.41
1:C:151:GLY:HA2	1:C:179:HIS:HE1	1.85	0.41
1:C:247:HIS:NE2	1:D:78:VAL:HG21	2.17	0.41
1:C:111:TRP:CD2	2:C:266:HLC:H4	2.55	0.41
1:D:105:GLY:H	1:D:142:SER:CB	2.32	0.41
1:A:41:LYS:C	1:A:41:LYS:CD	2.56	0.41
1:C:66:GLN:O	1:C:103:HIS:CD2	2.72	0.41
1:C:80:TYR:HB2	1:C:85:LEU:HD21	2.01	0.41
1:D:29:HIS:O	1:D:33:HIS:HD2	1.95	0.41
1:A:72:LEU:HA	1:A:72:LEU:HD23	1.81	0.41
1:A:74:ARG:HG3	1:B:254:HIS:CG	2.55	0.41
1:B:219:ALA:HB1	1:B:224:ILE:O	2.20	0.41
1:B:76:LEU:C	1:B:76:LEU:HD23	2.39	0.41
1:C:111:TRP:CG	1:C:138:GLY:C	2.93	0.41
1:C:180:GLN:HG3	1:D:184:ARG:HH22	1.84	0.41
1:D:16:LEU:HD22	1:D:20:GLN:OE1	2.20	0.41
1:A:255:LEU:O	1:A:258:PRO:HD2	2.20	0.41
1:C:186:ALA:O	1:C:187:ASN:CG	2.59	0.41
1:A:64:ASN:ND2	1:A:68:GLN:HB2	2.35	0.41
1:A:71:ARG:HH12	1:C:41:LYS:HB3	1.86	0.41
1:B:226:GLU:O	1:B:230:LYS:N	2.30	0.41
1:A:110:MET:CA	1:A:139:ILE:HD12	2.43	0.41
1:C:16:LEU:CB	1:C:20:GLN:HB2	2.51	0.41
1:A:187:ASN:OD1	1:A:187:ASN:O	2.38	0.41
1:B:110:MET:CE	1:B:139:ILE:HD12	2.50	0.41
1:B:56:LEU:HB2	1:B:57:LEU:H	1.60	0.41
1:B:76:LEU:HD22	1:B:76:LEU:O	2.15	0.41
1:C:253:MET:HE1	1:C:257:MET:HE3	2.03	0.41
1:A:71:ARG:HH22	1:C:42:ALA:N	2.18	0.41
1:A:192:SER:C	1:A:194:SER:CA	2.80	0.41
1:A:255:LEU:CA	1:A:258:PRO:HD2	2.50	0.41
1:C:243:ASN:ND2	1:D:78:VAL:HG11	2.36	0.41
1:A:219:ALA:H	1:A:229:VAL:HG21	1.74	0.41
1:A:62:ARG:HG2	1:A:73:GLU:OE2	2.18	0.41

Continued on next page...

Continued from previous page...

Atom-1	Atom-2	Interatomic distance (Å)	Clash overlap (Å)
1:B:223:ASP:OD2	1:D:117:ARG:NH1	2.54	0.41
1:D:111:TRP:CE3	1:D:138:GLY:CA	2.98	0.41
1:D:84:TRP:O	1:D:88:TYR:HB2	2.21	0.41
1:A:214:THR:C	1:A:216:TRP:N	2.74	0.40
1:A:218:ILE:HG21	1:A:229:VAL:HG13	2.02	0.40
1:A:254:HIS:O	1:A:258:PRO:HG2	2.16	0.40
1:B:181:ALA:HA	1:B:184:ARG:NH2	2.35	0.40
1:B:52:PRO:O	1:B:53:SER:HB2	2.21	0.40
1:B:69:ILE:HG22	1:B:70:GLN:N	2.36	0.40
1:D:105:GLY:N	1:D:142:SER:OG	2.48	0.40
1:D:56:LEU:HB3	1:D:156:ILE:HG12	2.03	0.40
1:D:46:GLN:O	1:D:50:GLN:OE1	2.39	0.40
1:A:205:ILE:CD1	1:A:232:HIS:CB	2.98	0.40
1:A:258:PRO:N	1:A:259:PRO:CD	2.83	0.40
1:A:93:TYR:CD1	1:A:126:PHE:HD1	2.38	0.40
1:B:104:LEU:HD13	1:B:151:GLY:HA3	2.04	0.40
1:B:63:LEU:CD1	1:B:151:GLY:N	2.83	0.40
1:C:224:ILE:HG23	1:C:228:THR:HB	2.03	0.40
1:C:250:VAL:O	1:C:253:MET:HG2	2.21	0.40
1:C:77:ASN:O	1:C:77:ASN:CG	2.57	0.40
1:D:243:ASN:H	1:D:247:HIS:CE1	2.39	0.40
1:D:121:ALA:O	1:D:125:ARG:HB3	2.21	0.40
1:D:43:PHE:O	1:D:47:VAL:HG23	2.21	0.40
1:A:121:ALA:O	1:A:125:ARG:HB3	2.21	0.40
1:A:219:ALA:HA	1:A:229:VAL:HG22	2.02	0.40
1:A:232:HIS:O	1:A:236:VAL:HG23	2.21	0.40
1:B:209:MET:HB3	1:B:209:MET:HE3	1.90	0.40
1:B:221:ILE:HA	1:D:103:HIS:CE1	2.57	0.40
1:C:211:ARG:CG	1:C:211:ARG:O	2.68	0.40
1:D:108:PRO:C	1:D:109:VAL:HG23	2.42	0.40
1:C:254:HIS:CE1	1:D:74:ARG:HG3	2.57	0.40

All (2) symmetry-related close contacts are listed below. The label for Atom-2 includes the symmetry operator and encoded unit-cell translations to be applied.

Atom-1	Atom-2	Interatomic distance (Å)	Clash overlap (Å)
1:C:114:ARG:CG	1:C:223:ASP:OD2[5_555]	1.99	0.21
1:A:45:ASP:OD1	1:B:65:ASN:ND2[8_544]	2.02	0.18

5.3 Torsion angles

5.3.1 Protein backbone

In the following table, the Percentiles column shows the percent Ramachandran outliers of the chain as a percentile score with respect to all X-ray entries followed by that with respect to entries of similar resolution.

The Analysed column shows the number of residues for which the backbone conformation was analysed, and the total number of residues.

Mol	Chain	Analysed	Favoured	Allowed	Outliers	Percentiles	
1	A	249/265 (94%)	220 (88%)	24 (10%)	5 (2%)	9	42
1	B	234/265 (88%)	195 (83%)	30 (13%)	9 (4%)	4	24
1	C	235/265 (89%)	212 (90%)	19 (8%)	4 (2%)	11	46
1	D	234/265 (88%)	204 (87%)	30 (13%)	0	100	100
All	All	952/1060 (90%)	831 (87%)	103 (11%)	18 (2%)	9	44

All (18) Ramachandran outliers are listed below:

Mol	Chain	Res	Type
1	A	108	PRO
1	B	17	THR
1	B	19	SER
1	B	20	GLN
1	B	57	LEU
1	B	78	VAL
1	A	257	MET
1	B	81	PRO
1	B	107	GLY
1	C	107	GLY
1	A	197	PRO
1	A	256	ALA
1	C	200	GLN
1	A	200	GLN
1	B	80	TYR
1	C	109	VAL
1	C	108	PRO
1	B	188	LEU

5.3.2 Protein sidechains ⓘ

In the following table, the Percentiles column shows the percent sidechain outliers of the chain as a percentile score with respect to all X-ray entries followed by that with respect to entries of similar resolution.

The Analysed column shows the number of residues for which the sidechain conformation was analysed, and the total number of residues.

Mol	Chain	Analysed	Rotameric	Outliers	Percentiles	
1	A	206/223 (92%)	203 (98%)	3 (2%)	70	88
1	B	197/223 (88%)	190 (96%)	7 (4%)	40	73
1	C	200/223 (90%)	197 (98%)	3 (2%)	70	88
1	D	197/223 (88%)	196 (100%)	1 (0%)	91	96
All	All	800/892 (90%)	786 (98%)	14 (2%)	64	85

All (14) residues with a non-rotameric sidechain are listed below:

Mol	Chain	Res	Type
1	A	198	LEU
1	A	199	SER
1	A	200	GLN
1	B	16	LEU
1	B	55	ARG
1	B	56	LEU
1	B	57	LEU
1	B	78	VAL
1	B	79	SER
1	B	137	SER
1	C	16	LEU
1	C	76	LEU
1	C	201	ARG
1	D	55	ARG

Some sidechains can be flipped to improve hydrogen bonding and reduce clashes. All (28) such sidechains are listed below:

Mol	Chain	Res	Type
1	A	65	ASN
1	A	87	GLN
1	A	103	HIS
1	A	106	GLN
1	A	254	HIS

Continued on next page...

Continued from previous page...

Mol	Chain	Res	Type
1	B	20	GLN
1	B	21	GLN
1	B	77	ASN
1	B	87	GLN
1	B	92	ASN
1	B	96	HIS
1	B	103	HIS
1	B	106	GLN
1	B	177	HIS
1	B	244	ASN
1	C	33	HIS
1	C	77	ASN
1	C	87	GLN
1	C	92	ASN
1	C	103	HIS
1	C	148	ASN
1	D	33	HIS
1	D	66	GLN
1	D	87	GLN
1	D	92	ASN
1	D	103	HIS
1	D	244	ASN
1	D	254	HIS

5.3.3 RNA ⓘ

There are no RNA molecules in this entry.

5.4 Non-standard residues in protein, DNA, RNA chains ⓘ

There are no non-standard protein/DNA/RNA residues in this entry.

5.5 Carbohydrates ⓘ

There are no carbohydrates in this entry.

5.6 Ligand geometry ⓘ

4 ligands are modelled in this entry.

In the following table, the Counts columns list the number of bonds (or angles) for which Mogul statistics could be retrieved, the number of bonds (or angles) that are observed in the model and the number of bonds (or angles) that are defined in the chemical component dictionary. The Link column lists molecule types, if any, to which the group is linked. The Z score for a bond length (or angle) is the number of standard deviations the observed value is removed from the expected value. A bond length (or angle) with $|Z| > 2$ is considered an outlier worth inspection. RMSZ is the root-mean-square of all Z scores of the bond lengths (or angles).

Mol	Type	Chain	Res	Link	Bond lengths			Bond angles		
					Counts	RMSZ	# $ Z > 2$	Counts	RMSZ	# $ Z > 2$
2	HLC	A	266	-	21,21,21	1.43	4 (19%)	24,27,27	2.77	4 (16%)
2	HLC	B	266	-	21,21,21	1.41	4 (19%)	24,27,27	2.77	4 (16%)
2	HLC	C	266	-	21,21,21	1.42	4 (19%)	24,27,27	2.78	4 (16%)
2	HLC	D	266	-	21,21,21	1.41	4 (19%)	24,27,27	2.78	4 (16%)

In the following table, the Chirals column lists the number of chiral outliers, the number of chiral centers analysed, the number of these observed in the model and the number defined in the chemical component dictionary. Similar counts are reported in the Torsion and Rings columns. '-' means no outliers of that kind were identified.

Mol	Type	Chain	Res	Link	Chirals	Torsions	Rings
2	HLC	A	266	-	-	0/11/21/21	0/2/2/2
2	HLC	B	266	-	-	0/11/21/21	0/2/2/2
2	HLC	C	266	-	-	0/11/21/21	0/2/2/2
2	HLC	D	266	-	-	0/11/21/21	0/2/2/2

All (16) bond length outliers are listed below:

Mol	Chain	Res	Type	Atoms	Z	Observed(Å)	Ideal(Å)
2	A	266	HLC	O2-C2	-2.35	1.40	1.46
2	C	266	HLC	O2-C2	-2.31	1.40	1.46
2	B	266	HLC	O2-C2	-2.31	1.40	1.46
2	D	266	HLC	O2-C2	-2.29	1.40	1.46
2	A	266	HLC	C12-CL1	2.32	1.79	1.74
2	B	266	HLC	C12-CL1	2.33	1.79	1.74
2	D	266	HLC	C12-CL1	2.35	1.79	1.74
2	C	266	HLC	C12-CL1	2.35	1.79	1.74
2	C	266	HLC	C4-C1	2.64	1.57	1.52
2	A	266	HLC	C4-C1	2.67	1.57	1.52
2	D	266	HLC	C4-C1	2.68	1.57	1.52
2	B	266	HLC	C4-C1	2.68	1.57	1.52
2	B	266	HLC	O2-C1	3.70	1.43	1.35
2	D	266	HLC	O2-C1	3.72	1.43	1.35
2	C	266	HLC	O2-C1	3.75	1.43	1.35

Continued on next page...

Continued from previous page...

Mol	Chain	Res	Type	Atoms	Z	Observed(Å)	Ideal(Å)
2	A	266	HLC	O2-C1	3.76	1.43	1.35

All (16) bond angle outliers are listed below:

Mol	Chain	Res	Type	Atoms	Z	Observed(°)	Ideal(°)
2	C	266	HLC	O2-C1-O1	-9.66	111.05	121.43
2	D	266	HLC	O2-C1-O1	-9.66	111.06	121.43
2	B	266	HLC	O2-C1-O1	-9.63	111.09	121.43
2	A	266	HLC	O2-C1-O1	-9.62	111.10	121.43
2	C	266	HLC	C1-C4-N1	-6.63	101.46	112.36
2	D	266	HLC	C1-C4-N1	-6.62	101.47	112.36
2	B	266	HLC	C1-C4-N1	-6.62	101.48	112.36
2	A	266	HLC	C1-C4-N1	-6.60	101.50	112.36
2	D	266	HLC	C2-O2-C1	-3.34	107.26	110.42
2	C	266	HLC	C2-O2-C1	-3.33	107.27	110.42
2	A	266	HLC	C2-O2-C1	-3.30	107.29	110.42
2	B	266	HLC	C2-O2-C1	-3.29	107.31	110.42
2	B	266	HLC	C8-O3-C9	4.09	128.74	117.90
2	C	266	HLC	C8-O3-C9	4.10	128.77	117.90
2	A	266	HLC	C8-O3-C9	4.11	128.78	117.90
2	D	266	HLC	C8-O3-C9	4.11	128.79	117.90

There are no chirality outliers.

There are no torsion outliers.

There are no ring outliers.

4 monomers are involved in 27 short contacts:

Mol	Chain	Res	Type	Clashes	Symm-Clashes
2	A	266	HLC	4	0
2	B	266	HLC	5	0
2	C	266	HLC	13	0
2	D	266	HLC	5	0

5.7 Other polymers ⓘ

There are no such residues in this entry.

5.8 Polymer linkage issues ⓘ

There are no chain breaks in this entry.

6 Fit of model and data ⓘ

6.1 Protein, DNA and RNA chains ⓘ

In the following table, the column labelled ‘#RSRZ> 2’ contains the number (and percentage) of RSRZ outliers, followed by percent RSRZ outliers for the chain as percentile scores relative to all X-ray entries and entries of similar resolution. The OWAB column contains the minimum, median, 95th percentile and maximum values of the occupancy-weighted average B-factor per residue. The column labelled ‘Q< 0.9’ lists the number of (and percentage) of residues with an average occupancy less than 0.9.

Mol	Chain	Analysed	<RSRZ>	#RSRZ>2	OWAB(Å ²)	Q<0.9
1	A	251/265 (94%)	0.72	32 (12%) 4 3	53, 130, 325, 665	0
1	B	238/265 (89%)	0.58	26 (10%) 6 5	63, 139, 238, 506	0
1	C	239/265 (90%)	0.24	16 (6%) 19 12	55, 112, 209, 315	0
1	D	238/265 (89%)	0.08	6 (2%) 58 46	50, 113, 192, 300	0
All	All	966/1060 (91%)	0.41	80 (8%) 12 8	50, 125, 246, 665	0

All (80) RSRZ outliers are listed below:

Mol	Chain	Res	Type	RSRZ
1	A	222	LEU	14.5
1	A	205	ILE	10.3
1	A	231	PHE	10.0
1	A	232	HIS	9.2
1	A	241	ASN	7.7
1	A	209	MET	7.1
1	A	221	ILE	6.7
1	A	259	PRO	6.1
1	A	202	GLU	5.9
1	A	227	ARG	5.7
1	B	78	VAL	5.6
1	A	218	ILE	5.4
1	A	230	LYS	5.1
1	B	14	ALA	4.5
1	A	215	ASN	4.3
1	A	223	ASP	4.2
1	B	244	ASN	4.0
1	A	238	ARG	4.0
1	A	224	ILE	3.9
1	A	235	ASN	3.7
1	B	15	GLY	3.7

Continued on next page...

Continued from previous page...

Mol	Chain	Res	Type	RSRZ
1	B	68	GLN	3.7
1	B	99	ILE	3.6
1	B	163	ARG	3.6
1	C	52	PRO	3.6
1	A	210	SER	3.5
1	B	77	ASN	3.4
1	C	257	MET	3.4
1	A	206	PHE	3.2
1	A	54	GLU	3.2
1	C	15	GLY	3.1
1	D	227	ARG	3.0
1	D	78	VAL	2.9
1	C	216	TRP	2.9
1	C	114	ARG	2.9
1	B	16	LEU	2.9
1	A	228	THR	2.9
1	C	53	SER	2.9
1	B	258	PRO	2.9
1	C	201	ARG	2.9
1	C	13	PRO	2.9
1	B	154	LEU	2.8
1	C	228	THR	2.8
1	B	96	HIS	2.8
1	C	229	VAL	2.8
1	B	211	ARG	2.8
1	C	218	ILE	2.7
1	B	256	ALA	2.7
1	B	159	ARG	2.7
1	C	106	GLN	2.7
1	C	239	LYS	2.6
1	C	230	LYS	2.6
1	A	121	ALA	2.5
1	A	213	LYS	2.5
1	D	236	VAL	2.5
1	C	14	ALA	2.5
1	B	66	GLN	2.5
1	B	100	LEU	2.4
1	B	166	ALA	2.4
1	B	73	GLU	2.4
1	D	77	ASN	2.4
1	A	240	LEU	2.4
1	B	160	GLU	2.3

Continued on next page...

Continued from previous page...

Mol	Chain	Res	Type	RSRZ
1	C	16	LEU	2.3
1	A	242	ALA	2.3
1	A	243	ASN	2.2
1	A	136	GLY	2.2
1	B	84	TRP	2.2
1	A	239	LYS	2.2
1	A	201	ARG	2.2
1	B	158	GLY	2.2
1	A	115	PHE	2.2
1	D	232	HIS	2.2
1	B	115	PHE	2.1
1	B	139	ILE	2.1
1	D	66	GLN	2.1
1	B	245	ARG	2.1
1	A	191	ALA	2.1
1	A	9	ALA	2.1
1	B	141	PHE	2.0

6.2 Non-standard residues in protein, DNA, RNA chains [i](#)

There are no non-standard protein/DNA/RNA residues in this entry.

6.3 Carbohydrates [i](#)

There are no carbohydrates in this entry.

6.4 Ligands [i](#)

In the following table, the Atoms column lists the number of modelled atoms in the group and the number defined in the chemical component dictionary. LLDF column lists the quality of electron density of the group with respect to its neighbouring residues in protein, DNA or RNA chains. The B-factors column lists the minimum, median, 95th percentile and maximum values of B factors of atoms in the group. The column labelled 'Q< 0.9' lists the number of atoms with occupancy less than 0.9.

Mol	Type	Chain	Res	Atoms	RSCC	RSR	LLDF	B-factors(Å ²)	Q<0.9
2	HLC	A	266	20/20	0.70	0.71	5.28	165,196,223,355	0
2	HLC	C	266	20/20	0.81	0.42	2.38	88,124,168,236	0
2	HLC	D	266	20/20	0.87	0.35	1.67	146,171,191,298	0
2	HLC	B	266	20/20	0.81	0.42	0.53	150,157,170,363	0

6.5 Other polymers [i](#)

There are no such residues in this entry.