



# Full wwPDB X-ray Structure Validation Report ⓘ

Feb 13, 2017 – 12:37 pm GMT

PDB ID : 3QS5  
Title : Crystal structure of LeuT mutant I359Q bound to sodium and L-tryptophan  
Authors : Piscitelli, C.L.; Gouaux, E.  
Deposited on : 2011-02-19  
Resolution : 2.60 Å(reported)

This is a Full wwPDB X-ray Structure Validation Report for a publicly released PDB entry.

We welcome your comments at [validation@mail.wwpdb.org](mailto:validation@mail.wwpdb.org)

A user guide is available at

<http://wwpdb.org/validation/2016/XrayValidationReportHelp>

with specific help available everywhere you see the ⓘ symbol.

---

The following versions of software and data (see [references ⓘ](#)) were used in the production of this report:

MolProbity : 4.02b-467  
Mogul : 1.7.2 (RC1), CSD as538be (2017)  
Xtriage (Phenix) : 1.9-1692  
EDS : trunk28620  
Percentile statistics : 20161228.v01 (using entries in the PDB archive December 28th 2016)  
Refmac : 5.8.0135  
CCP4 : 6.5.0  
Ideal geometry (proteins) : Engh & Huber (2001)  
Ideal geometry (DNA, RNA) : Parkinson et al. (1996)  
Validation Pipeline (wwPDB-VP) : recalc28949

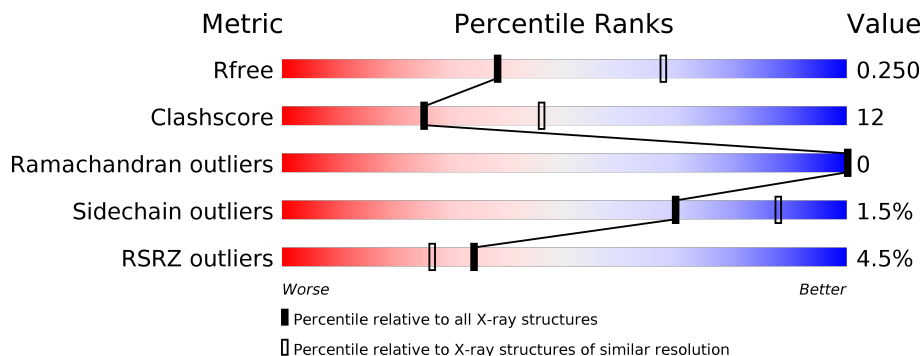
# 1 Overall quality at a glance

The following experimental techniques were used to determine the structure:

## *X-RAY DIFFRACTION*

The reported resolution of this entry is 2.60 Å.

Percentile scores (ranging between 0-100) for global validation metrics of the entry are shown in the following graphic. The table shows the number of entries on which the scores are based.



Metric	Whole archive (#Entries)	Similar resolution (#Entries, resolution range(Å))
$R_{free}$	100719	2542 (2.60-2.60)
Clashscore	112137	2895 (2.60-2.60)
Ramachandran outliers	110173	2848 (2.60-2.60)
Sidechain outliers	110143	2848 (2.60-2.60)
RSRZ outliers	101464	2550 (2.60-2.60)

The table below summarises the geometric issues observed across the polymeric chains and their fit to the electron density. The red, orange, yellow and green segments on the lower bar indicate the fraction of residues that contain outliers for  $\geq 3$ , 2, 1 and 0 types of geometric quality criteria. A grey segment represents the fraction of residues that are not modelled. The numeric value for each fraction is indicated below the corresponding segment, with a dot representing fractions  $\leq 5\%$ . The upper red bar (where present) indicates the fraction of residues that have poor fit to the electron density. The numeric value is given above the bar.

Mol	Chain	Length	Quality of chain
1	A	519	<div> <div>4%</div> <div>70%</div> <div>28%</div> <div>..</div> </div>

The following table lists non-polymeric compounds, carbohydrate monomers and non-standard residues in protein, DNA, RNA chains that are outliers for geometric or electron-density-fit criteria:

Mol	Type	Chain	Res	Chirality	Geometry	Clashes	Electron density
4	BOG	A	702	-	-	-	X
4	BOG	A	703	-	-	-	X

## 2 Entry composition [i](#)

There are 5 unique types of molecules in this entry. The entry contains 4134 atoms, of which 0 are hydrogens and 0 are deuteriums.

In the tables below, the ZeroOcc column contains the number of atoms modelled with zero occupancy, the AltConf column contains the number of residues with at least one atom in alternate conformation and the Trace column contains the number of residues modelled with at most 2 atoms.

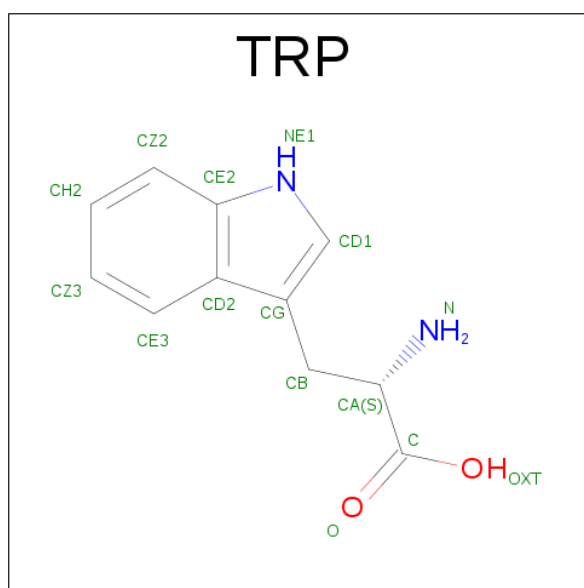
- Molecule 1 is a protein called Na(+):neurotransmitter symporter (Snf family).

Mol	Chain	Residues	Atoms					ZeroOcc	AltConf	Trace
1	A	509	Total	C	N	O	S	0	0	0
			4045	2737	635	661	12			

There are 7 discrepancies between the modelled and reference sequences:

Chain	Residue	Modelled	Actual	Comment	Reference
A	359	GLN	ILE	ENGINEERED MUTATION	UNP O67854
A	514	GLY	-	EXPRESSION TAG	UNP O67854
A	515	THR	-	EXPRESSION TAG	UNP O67854
A	516	LEU	-	EXPRESSION TAG	UNP O67854
A	517	VAL	-	EXPRESSION TAG	UNP O67854
A	518	PRO	-	EXPRESSION TAG	UNP O67854
A	519	ARG	-	EXPRESSION TAG	UNP O67854

- Molecule 2 is TRYPTOPHAN (three-letter code: TRP) (formula: C<sub>11</sub>H<sub>12</sub>N<sub>2</sub>O<sub>2</sub>).

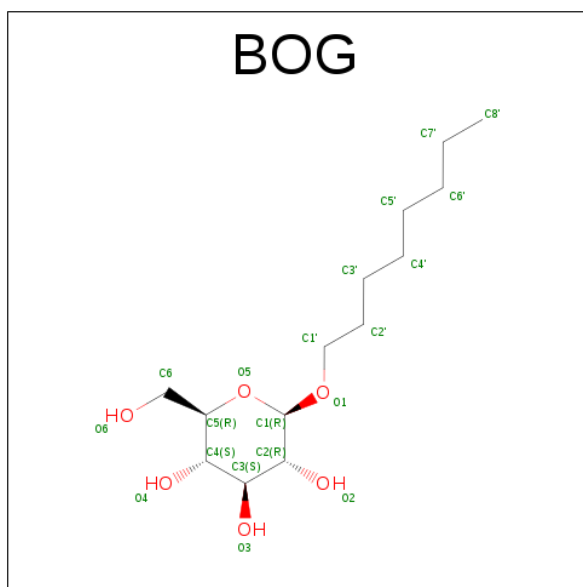


Mol	Chain	Residues	Atoms				ZeroOcc	AltConf
2	A	1	Total	C	N	O	0	0
			15	11	2	2		

- Molecule 3 is SODIUM ION (three-letter code: NA) (formula: Na).

Mol	Chain	Residues	Atoms		ZeroOcc	AltConf
3	A	2	Total	Na	0	0
			2	2		

- Molecule 4 is SUGAR (B-OCTYLGLUCOSIDE) (three-letter code: BOG) (formula: C<sub>14</sub>H<sub>28</sub>O<sub>6</sub>).



Mol	Chain	Residues	Atoms			ZeroOcc	AltConf
4	A	1	Total	C	O	0	0
			20	14	6		
4	A	1	Total	C	O	0	0
			20	14	6		
4	A	1	Total	C	O	0	0
			20	14	6		

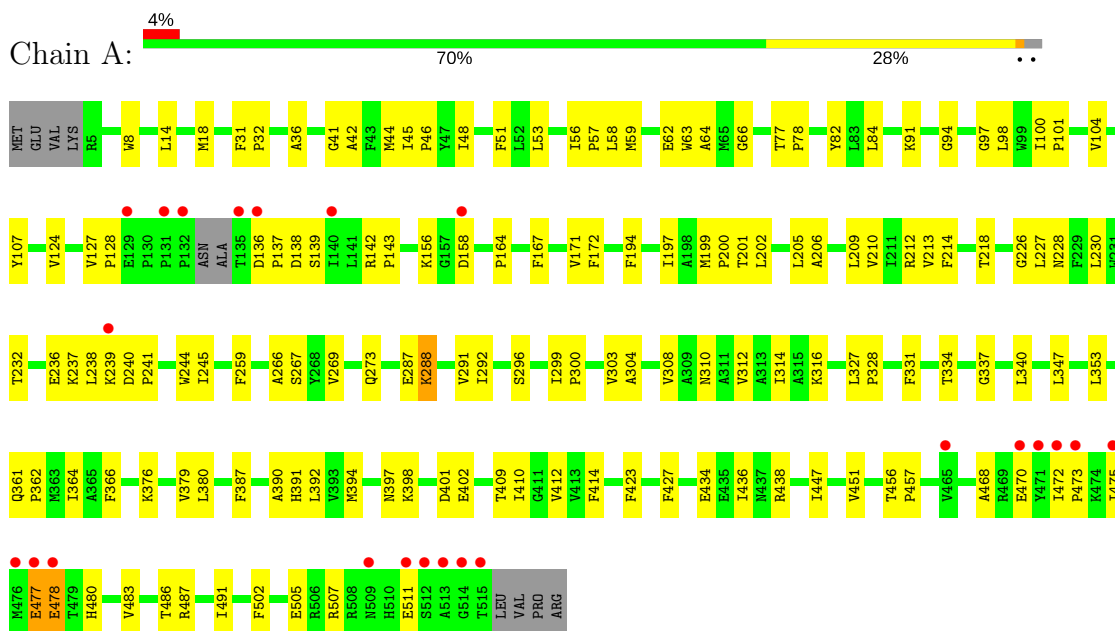
- Molecule 5 is water.

Mol	Chain	Residues	Atoms		ZeroOcc	AltConf
5	A	12	Total	O	0	0
			12	12		

### 3 Residue-property plots [i](#)

These plots are drawn for all protein, RNA and DNA chains in the entry. The first graphic for a chain summarises the proportions of the various outlier classes displayed in the second graphic. The second graphic shows the sequence view annotated by issues in geometry and electron density. Residues are color-coded according to the number of geometric quality criteria for which they contain at least one outlier: green = 0, yellow = 1, orange = 2 and red = 3 or more. A red dot above a residue indicates a poor fit to the electron density ( $RSRZ > 2$ ). Stretches of 2 or more consecutive residues without any outlier are shown as a green connector. Residues present in the sample, but not in the model, are shown in grey.

- Molecule 1: Na(+):neurotransmitter symporter (Snf family)



## 4 Data and refinement statistics

Property	Value	Source
Space group	C 1 2 1	Depositor
Cell constants a, b, c, $\alpha$ , $\beta$ , $\gamma$	90.93Å 87.09Å 81.87Å 90.00° 94.75° 90.00°	Depositor
Resolution (Å)	31.40 – 2.60 31.40 – 2.60	Depositor EDS
% Data completeness (in resolution range)	89.6 (31.40-2.60) 89.6 (31.40-2.60)	Depositor EDS
$R_{merge}$	(Not available)	Depositor
$R_{sym}$	0.06	Depositor
$\langle I/\sigma(I) \rangle$ <sup>1</sup>	2.09 (at 2.61Å)	Xtriage
Refinement program	PHENIX (phenix.refine: 2010_04_18_2155)	Depositor
R, $R_{free}$	0.201 , 0.241 0.201 , 0.250	Depositor DCC
$R_{free}$ test set	893 reflections (5.04%)	DCC
Wilson B-factor (Å <sup>2</sup> )	46.6	Xtriage
Anisotropy	0.630	Xtriage
Bulk solvent $k_{sol}$ (e/Å <sup>3</sup> ), $B_{sol}$ (Å <sup>2</sup> )	0.35 , 69.9	EDS
L-test for twinning <sup>2</sup>	$\langle  L  \rangle = 0.49$ , $\langle L^2 \rangle = 0.32$	Xtriage
Estimated twinning fraction	No twinning to report.	Xtriage
$F_o, F_c$ correlation	0.94	EDS
Total number of atoms	4134	wwPDB-VP
Average B, all atoms (Å <sup>2</sup> )	58.0	wwPDB-VP

Xtriage's analysis on translational NCS is as follows: *The largest off-origin peak in the Patterson function is 5.53% of the height of the origin peak. No significant pseudotranslation is detected.*

<sup>1</sup>Intensities estimated from amplitudes.

<sup>2</sup>Theoretical values of  $\langle |L| \rangle$ ,  $\langle L^2 \rangle$  for acentric reflections are 0.5, 0.333 respectively for untwinned datasets, and 0.375, 0.2 for perfectly twinned datasets.

## 5 Model quality [i](#)

### 5.1 Standard geometry [i](#)

Bond lengths and bond angles in the following residue types are not validated in this section: NA, BOG

The Z score for a bond length (or angle) is the number of standard deviations the observed value is removed from the expected value. A bond length (or angle) with  $|Z| > 5$  is considered an outlier worth inspection. RMSZ is the root-mean-square of all Z scores of the bond lengths (or angles).

Mol	Chain	Bond lengths		Bond angles	
		RMSZ	$\# Z  > 5$	RMSZ	$\# Z  > 5$
1	A	0.25	0/4172	0.39	0/5682

There are no bond length outliers.

There are no bond angle outliers.

There are no chirality outliers.

There are no planarity outliers.

### 5.2 Too-close contacts [i](#)

In the following table, the Non-H and H(model) columns list the number of non-hydrogen atoms and hydrogen atoms in the chain respectively. The H(added) column lists the number of hydrogen atoms added and optimized by MolProbity. The Clashes column lists the number of clashes within the asymmetric unit, whereas Symm-Clashes lists symmetry related clashes.

Mol	Chain	Non-H	H(model)	H(added)	Clashes	Symm-Clashes
1	A	4045	0	4128	101	0
2	A	15	0	9	0	0
3	A	2	0	0	0	0
4	A	60	0	84	2	0
5	A	12	0	0	0	0
All	All	4134	0	4221	101	0

The all-atom clashscore is defined as the number of clashes found per 1000 atoms (including hydrogen atoms). The all-atom clashscore for this structure is 12.

All (101) close contacts within the same asymmetric unit are listed below, sorted by their clash magnitude.

Atom-1	Atom-2	Interatomic distance (Å)	Clash overlap (Å)
1:A:478:GLU:HA	1:A:478:GLU:OE2	1.72	0.90
1:A:41:GLY:HA3	1:A:232:THR:O	1.71	0.90
1:A:473:PRO:O	1:A:477:GLU:HB2	1.81	0.80
1:A:299:ILE:HB	1:A:300:PRO:HD3	1.70	0.72
1:A:259:PHE:CZ	1:A:412:VAL:HG11	2.23	0.72
1:A:45:ILE:HB	1:A:46:PRO:HD3	1.73	0.69
1:A:507:ARG:O	1:A:511:GLU:HG2	1.96	0.65
1:A:238:LEU:O	1:A:244:TRP:NE1	2.28	0.64
1:A:236:GLU:H	1:A:236:GLU:CD	2.00	0.64
1:A:164:PRO:O	4:A:703:BOG:H61	1.97	0.64
1:A:310:ASN:O	1:A:314:ILE:HG13	1.99	0.62
1:A:59:MET:O	1:A:63:TRP:HD1	1.83	0.62
1:A:104:VAL:HA	1:A:107:TYR:CE2	2.36	0.61
1:A:468:ALA:O	1:A:472:ILE:HB	2.02	0.60
1:A:239:LYS:N	1:A:239:LYS:HD2	2.17	0.59
1:A:77:THR:OG1	1:A:97:GLY:HA3	2.02	0.58
1:A:288:LYS:O	1:A:292:ILE:HB	2.04	0.57
1:A:8:TRP:CD1	1:A:14:LEU:HD13	2.40	0.56
1:A:287:GLU:O	1:A:291:VAL:HG22	2.05	0.56
1:A:376:LYS:O	1:A:380:LEU:HG	2.05	0.55
1:A:44:MET:O	1:A:48:ILE:HG13	2.07	0.55
1:A:53:LEU:O	1:A:57:PRO:HG2	2.07	0.55
1:A:391:HIS:HB3	4:A:704:BOG:H7'1	1.89	0.54
1:A:423:PHE:O	1:A:427:PHE:HB3	2.09	0.53
1:A:236:GLU:CD	1:A:236:GLU:N	2.62	0.53
1:A:502:PHE:O	1:A:505:GLU:HG2	2.08	0.53
1:A:66:GLY:HA3	1:A:266:ALA:HB3	1.89	0.52
1:A:472:ILE:O	1:A:475:ILE:HG12	2.09	0.52
1:A:308:VAL:O	1:A:312:VAL:HG23	2.09	0.52
1:A:167:PHE:O	1:A:171:VAL:HG23	2.10	0.52
1:A:390:ALA:O	1:A:394:MET:HG3	2.10	0.51
1:A:288:LYS:N	1:A:288:LYS:HD2	2.25	0.51
1:A:199:MET:HB2	1:A:200:PRO:HD3	1.92	0.51
1:A:172:PHE:HE2	1:A:387:PHE:CD1	2.29	0.50
1:A:100:ILE:N	1:A:101:PRO:HD2	2.26	0.50
1:A:226:GLY:N	1:A:303:VAL:HG11	2.26	0.50
1:A:51:PHE:CZ	1:A:56:ILE:HD11	2.46	0.50
1:A:299:ILE:CB	1:A:300:PRO:HD3	2.42	0.50
1:A:434:GLU:O	1:A:438:ARG:HB2	2.11	0.50
1:A:56:ILE:HB	1:A:57:PRO:HD3	1.93	0.50
1:A:66:GLY:O	1:A:267:SER:HA	2.12	0.49
1:A:327:LEU:HB3	1:A:328:PRO:HD3	1.94	0.49

Continued on next page...

*Continued from previous page...*

Atom-1	Atom-2	Interatomic distance (Å)	Clash overlap (Å)
1:A:136:ASP:OD2	1:A:137:PRO:HD2	2.13	0.49
1:A:402:GLU:HB3	1:A:486:THR:HG21	1.93	0.49
1:A:468:ALA:HA	1:A:472:ILE:HG13	1.93	0.49
1:A:212:ARG:HG2	1:A:340:LEU:HD21	1.94	0.48
1:A:156:LYS:HB2	1:A:156:LYS:NZ	2.28	0.48
1:A:226:GLY:HA2	1:A:303:VAL:HG21	1.95	0.48
1:A:230:LEU:HD12	1:A:230:LEU:O	2.13	0.48
1:A:18:MET:HG3	1:A:63:TRP:CH2	2.48	0.48
1:A:36:ALA:HB2	1:A:299:ILE:HD11	1.96	0.48
1:A:58:LEU:O	1:A:62:GLU:HG3	2.14	0.48
1:A:202:LEU:HG	1:A:347:LEU:CD1	2.43	0.48
1:A:259:PHE:CE2	1:A:412:VAL:HG11	2.48	0.47
1:A:84:LEU:HD13	1:A:423:PHE:HD1	1.78	0.47
1:A:410:ILE:HG22	1:A:414:PHE:CE2	2.50	0.47
1:A:331:PHE:O	1:A:337:GLY:HA3	2.14	0.47
1:A:201:THR:O	1:A:205:LEU:HG	2.15	0.46
1:A:42:ALA:HB1	1:A:237:LYS:HB2	1.96	0.46
1:A:136:ASP:HB3	1:A:139:SER:OG	2.15	0.46
1:A:456:THR:N	1:A:457:PRO:HD2	2.30	0.46
1:A:240:ASP:OD2	1:A:241:PRO:HD2	2.16	0.45
1:A:194:PHE:CZ	1:A:353:LEU:HD23	2.52	0.45
1:A:475:ILE:HG13	1:A:475:ILE:O	2.17	0.45
1:A:397:ASN:O	1:A:398:LYS:HB2	2.16	0.45
1:A:228:ASN:O	1:A:232:THR:HB	2.17	0.44
1:A:241:PRO:O	1:A:245:ILE:HG12	2.17	0.44
1:A:478:GLU:OE2	1:A:478:GLU:CA	2.51	0.44
1:A:447:ILE:O	1:A:451:VAL:HG23	2.17	0.44
1:A:214:PHE:CZ	1:A:227:LEU:HD11	2.53	0.44
1:A:398:LYS:HD3	1:A:398:LYS:HA	1.80	0.44
1:A:8:TRP:CG	1:A:14:LEU:HD13	2.53	0.44
1:A:487:ARG:O	1:A:491:ILE:HG13	2.18	0.44
1:A:31:PHE:N	1:A:32:PRO:HD2	2.33	0.43
1:A:212:ARG:HH21	1:A:334:THR:HB	1.83	0.43
1:A:46:PRO:HD3	1:A:238:LEU:HD22	2.00	0.43
1:A:78:PRO:HA	1:A:94:GLY:HA3	1.99	0.43
1:A:158:ASP:N	1:A:158:ASP:OD2	2.46	0.43
1:A:98:LEU:HD21	1:A:366:PHE:HB2	2.01	0.43
1:A:124:VAL:HG12	1:A:124:VAL:O	2.19	0.43
1:A:142:ARG:N	1:A:143:PRO:CD	2.81	0.43
1:A:364:ILE:HD13	1:A:379:VAL:HG22	1.99	0.43
1:A:401:ASP:OD1	1:A:401:ASP:N	2.52	0.43

*Continued on next page...*

Continued from previous page...

Atom-1	Atom-2	Interatomic distance (Å)	Clash overlap (Å)
1:A:468:ALA:HB1	1:A:472:ILE:HD12	2.00	0.43
1:A:218:THR:OG1	1:A:304:ALA:O	2.37	0.42
1:A:269:VAL:CG1	1:A:273:GLN:HB3	2.50	0.42
1:A:296:SER:O	1:A:300:PRO:HG2	2.20	0.42
1:A:392:LEU:HA	1:A:392:LEU:HD12	1.92	0.42
1:A:82:TYR:CD1	1:A:91:LYS:HE3	2.55	0.42
1:A:209:LEU:O	1:A:213:VAL:HG23	2.20	0.42
1:A:361:GLN:N	1:A:362:PRO:CD	2.82	0.42
1:A:206:ALA:O	1:A:210:VAL:HG23	2.20	0.41
1:A:409:THR:HG22	1:A:410:ILE:N	2.35	0.41
1:A:312:VAL:HG12	1:A:316:LYS:HE2	2.03	0.41
1:A:64:ALA:HB2	1:A:436:ILE:HG12	2.02	0.41
1:A:480:HIS:O	1:A:483:VAL:HG22	2.21	0.41
1:A:139:SER:O	1:A:143:PRO:HD3	2.20	0.40
1:A:172:PHE:CE2	1:A:387:PHE:CD1	3.09	0.40
1:A:398:LYS:HD2	1:A:401:ASP:OD2	2.20	0.40
1:A:77:THR:N	1:A:78:PRO:CD	2.84	0.40
1:A:127:VAL:HB	1:A:128:PRO:HD2	2.01	0.40

There are no symmetry-related clashes.

## 5.3 Torsion angles [i](#)

### 5.3.1 Protein backbone [i](#)

In the following table, the Percentiles column shows the percent Ramachandran outliers of the chain as a percentile score with respect to all X-ray entries followed by that with respect to entries of similar resolution.

The Analysed column shows the number of residues for which the backbone conformation was analysed, and the total number of residues.

Mol	Chain	Analysed	Favoured	Allowed	Outliers	Percentiles	
1	A	505/519 (97%)	496 (98%)	9 (2%)	0	100	100

There are no Ramachandran outliers to report.

### 5.3.2 Protein sidechains [i](#)

In the following table, the Percentiles column shows the percent sidechain outliers of the chain as a percentile score with respect to all X-ray entries followed by that with respect to entries of similar

resolution.

The Analysed column shows the number of residues for which the sidechain conformation was analysed, and the total number of residues.

Mol	Chain	Analysed	Rotameric	Outliers	Percentiles
1	A	411/420 (98%)	405 (98%)	6 (2%)	70 88

All (6) residues with a non-rotameric sidechain are listed below:

Mol	Chain	Res	Type
1	A	138	ASP
1	A	197	ILE
1	A	288	LYS
1	A	470	GLU
1	A	477	GLU
1	A	478	GLU

Some sidechains can be flipped to improve hydrogen bonding and reduce clashes. All (1) such sidechains are listed below:

Mol	Chain	Res	Type
1	A	361	GLN

### 5.3.3 RNA [i](#)

There are no RNA molecules in this entry.

## 5.4 Non-standard residues in protein, DNA, RNA chains [i](#)

There are no non-standard protein/DNA/RNA residues in this entry.

## 5.5 Carbohydrates [i](#)

There are no carbohydrates in this entry.

## 5.6 Ligand geometry [i](#)

Of 6 ligands modelled in this entry, 2 are monoatomic - leaving 4 for Mogul analysis.

In the following table, the Counts columns list the number of bonds (or angles) for which Mogul statistics could be retrieved, the number of bonds (or angles) that are observed in the model and

the number of bonds (or angles) that are defined in the chemical component dictionary. The Link column lists molecule types, if any, to which the group is linked. The Z score for a bond length (or angle) is the number of standard deviations the observed value is removed from the expected value. A bond length (or angle) with  $|Z| > 2$  is considered an outlier worth inspection. RMSZ is the root-mean-square of all Z scores of the bond lengths (or angles).

Mol	Type	Chain	Res	Link	Bond lengths			Bond angles		
					Counts	RMSZ	$\# Z  > 2$	Counts	RMSZ	$\# Z  > 2$
2	TRP	A	601	3	11,16,16	0.69	0	11,22,22	0.86	0
4	BOG	A	702	-	20,20,20	0.47	0	25,25,25	0.54	0
4	BOG	A	703	-	20,20,20	0.46	0	25,25,25	0.53	0
4	BOG	A	704	-	20,20,20	0.48	0	25,25,25	0.84	1 (4%)

In the following table, the Chirals column lists the number of chiral outliers, the number of chiral centers analysed, the number of these observed in the model and the number defined in the chemical component dictionary. Similar counts are reported in the Torsion and Rings columns. '-' means no outliers of that kind were identified.

Mol	Type	Chain	Res	Link	Chirals	Torsions	Rings
2	TRP	A	601	3	-	0/3/8/8	0/2/2/2
4	BOG	A	702	-	-	0/11/31/31	0/1/1/1
4	BOG	A	703	-	-	0/11/31/31	0/1/1/1
4	BOG	A	704	-	-	0/11/31/31	0/1/1/1

There are no bond length outliers.

All (1) bond angle outliers are listed below:

Mol	Chain	Res	Type	Atoms	Z	Observed(°)	Ideal(°)
4	A	704	BOG	C1'-O1-C1	-2.14	110.19	113.87

There are no chirality outliers.

There are no torsion outliers.

There are no ring outliers.

2 monomers are involved in 2 short contacts:

Mol	Chain	Res	Type	Clashes	Symm-Clashes
4	A	703	BOG	1	0
4	A	704	BOG	1	0

## 5.7 Other polymers ⓘ

There are no such residues in this entry.

## 5.8 Polymer linkage issues ⓘ

There are no chain breaks in this entry.

## 6 Fit of model and data ⓘ

### 6.1 Protein, DNA and RNA chains ⓘ

In the following table, the column labelled ‘#RSRZ> 2’ contains the number (and percentage) of RSRZ outliers, followed by percent RSRZ outliers for the chain as percentile scores relative to all X-ray entries and entries of similar resolution. The OWAB column contains the minimum, median, 95<sup>th</sup> percentile and maximum values of the occupancy-weighted average B-factor per residue. The column labelled ‘Q< 0.9’ lists the number of (and percentage) of residues with an average occupancy less than 0.9.

Mol	Chain	Analysed	<RSRZ>	#RSRZ>2	OWAB(Å <sup>2</sup> )	Q<0.9
1	A	509/519 (98%)	-0.18	23 (4%) 34 26	31, 53, 101, 140	0

All (23) RSRZ outliers are listed below:

Mol	Chain	Res	Type	RSRZ
1	A	132	PRO	12.4
1	A	136	ASP	6.4
1	A	477	GLU	5.7
1	A	515	THR	4.1
1	A	475	ILE	3.5
1	A	512	SER	3.4
1	A	509	ASN	3.3
1	A	131	PRO	3.0
1	A	135	THR	2.9
1	A	476	MET	2.9
1	A	470	GLU	2.9
1	A	511	GLU	2.9
1	A	471	TYR	2.9
1	A	478	GLU	2.8
1	A	129	GLU	2.7
1	A	239	LYS	2.5
1	A	465	VAL	2.5
1	A	158	ASP	2.5
1	A	140	ILE	2.4
1	A	514	GLY	2.3
1	A	473	PRO	2.3
1	A	472	ILE	2.2
1	A	513	ALA	2.0

## 6.2 Non-standard residues in protein, DNA, RNA chains [i](#)

There are no non-standard protein/DNA/RNA residues in this entry.

## 6.3 Carbohydrates [i](#)

There are no carbohydrates in this entry.

## 6.4 Ligands [i](#)

In the following table, the Atoms column lists the number of modelled atoms in the group and the number defined in the chemical component dictionary. LLDF column lists the quality of electron density of the group with respect to its neighbouring residues in protein, DNA or RNA chains. The B-factors column lists the minimum, median, 95<sup>th</sup> percentile and maximum values of B factors of atoms in the group. The column labelled 'Q< 0.9' lists the number of atoms with occupancy less than 0.9.

Mol	Type	Chain	Res	Atoms	RSCC	RSR	LLDF	B-factors(Å <sup>2</sup> )	Q<0.9
4	BOG	A	703	20/20	0.87	0.31	6.80	68,80,99,104	0
4	BOG	A	702	20/20	0.74	0.34	3.73	65,100,120,129	0
2	TRP	A	601	15/15	0.98	0.25	1.61	30,37,48,49	0
3	NA	A	751	1/1	0.96	0.20	1.06	42,42,42,42	0
4	BOG	A	704	20/20	0.89	0.24	0.81	51,100,123,124	0
3	NA	A	752	1/1	0.84	0.15	-1.18	55,55,55,55	0

## 6.5 Other polymers [i](#)

There are no such residues in this entry.