



Full wwPDB X-ray Structure Validation Report ⓘ

Oct 30, 2017 – 12:19 PM EDT

PDB ID : 3QTT
Title : Crystal Structure of Pantoate-beta-alanine Ligase from *Francisella tularensis*
Complexed with Beta-gamma ATP and Beta-alanine
Authors : Maltseva, N.; Kim, Y.; Kwon, K.; Anderson, W.F.; Joachimiak, A.; Center for
Structural Genomics of Infectious Diseases (CSGID)
Deposited on : unknown
Resolution : 2.60 Å(reported)

This is a Full wwPDB X-ray Structure Validation Report for a publicly released PDB entry.

We welcome your comments at validation@mail.wwpdb.org

A user guide is available at

<http://wwpdb.org/validation/2016/XrayValidationReportHelp>

with specific help available everywhere you see the ⓘ symbol.

The following versions of software and data (see [references ⓘ](#)) were used in the production of this report:

MolProbity	:	4.02b-467
Mogul	:	1.7.2 (RC1), CSD as538be (2017)
Xtriage (Phenix)	:	1.9-1692
EDS	:	rb-20030345
Percentile statistics	:	20161228.v01 (using entries in the PDB archive December 28th 2016)
Refmac	:	5.8.0135
CCP4	:	6.5.0
Ideal geometry (proteins)	:	Engh & Huber (2001)
Ideal geometry (DNA, RNA)	:	Parkinson et al. (1996)
Validation Pipeline (wwPDB-VP)	:	rb-20030345

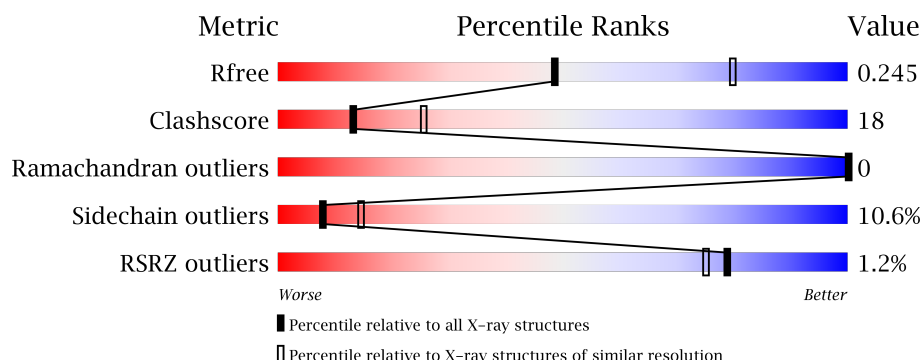
1 Overall quality at a glance ⓘ

The following experimental techniques were used to determine the structure:

X-RAY DIFFRACTION

The reported resolution of this entry is 2.60 Å.

Percentile scores (ranging between 0-100) for global validation metrics of the entry are shown in the following graphic. The table shows the number of entries on which the scores are based.



Metric	Whole archive (#Entries)	Similar resolution (#Entries, resolution range(Å))
R_{free}	100719	2542 (2.60-2.60)
Clashscore	112137	2895 (2.60-2.60)
Ramachandran outliers	110173	2848 (2.60-2.60)
Sidechain outliers	110143	2848 (2.60-2.60)
RSRZ outliers	101464	2550 (2.60-2.60)

The table below summarises the geometric issues observed across the polymeric chains and their fit to the electron density. The red, orange, yellow and green segments on the lower bar indicate the fraction of residues that contain outliers for ≥ 3 , 2, 1 and 0 types of geometric quality criteria. A grey segment represents the fraction of residues that are not modelled. The numeric value for each fraction is indicated below the corresponding segment, with a dot representing fractions $\leq 5\%$. The upper red bar (where present) indicates the fraction of residues that have poor fit to the electron density. The numeric value is given above the bar.

Mol	Chain	Length	Quality of chain
1	A	264	<div> <div>2%</div> <div> <div></div> <div>62%</div> <div>31%</div> <div>6%</div> </div> </div>
1	B	264	<div> <div></div> <div> <div>63%</div> <div>30%</div> <div>5%</div> </div> </div>

The following table lists non-polymeric compounds, carbohydrate monomers and non-standard residues in protein, DNA, RNA chains that are outliers for geometric or electron-density-fit criteria:

Mol	Type	Chain	Res	Chirality	Geometry	Clashes	Electron density
2	ANP	A	271	-	-	X	-
3	PRO	A	274	-	-	X	X
3	PRO	B	272	-	-	-	X
5	BAL	A	275	-	-	-	X

2 Entry composition [i](#)

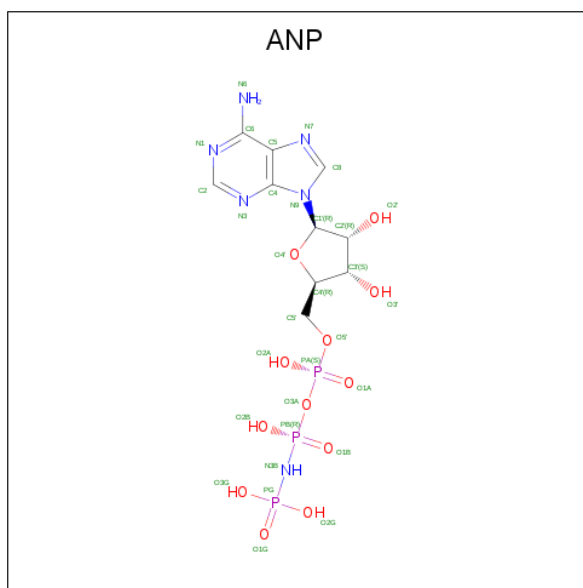
There are 6 unique types of molecules in this entry. The entry contains 4452 atoms, of which 0 are hydrogens and 0 are deuteriums.

In the tables below, the ZeroOcc column contains the number of atoms modelled with zero occupancy, the AltConf column contains the number of residues with at least one atom in alternate conformation and the Trace column contains the number of residues modelled with at most 2 atoms.

- Molecule 1 is a protein called Pantothenate synthetase.

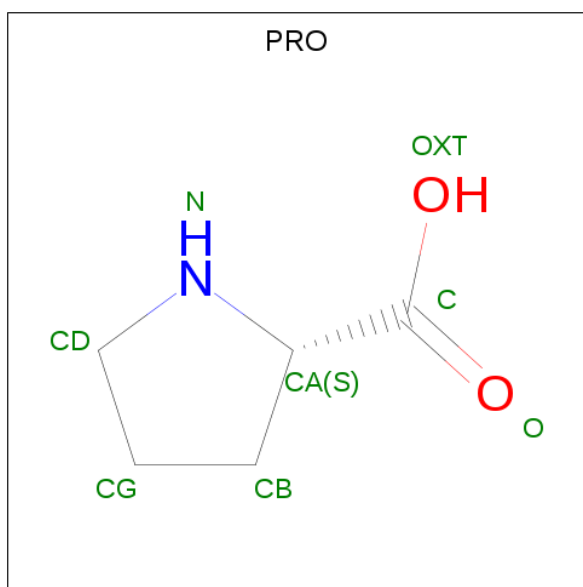
Mol	Chain	Residues	Atoms						ZeroOcc	AltConf	Trace
1	A	261	Total	C	N	O	S	Se	8	5	0
			2134	1364	364	400	1	5			
1	B	259	Total	C	N	O	S	Se	0	5	0
			2121	1357	362	396	1	5			

- Molecule 2 is PHOSPHOAMINOPHOSPHONIC ACID-ADENYLATE ESTER (three-letter code: ANP) (formula: $C_{10}H_{17}N_6O_{12}P_3$).



Mol	Chain	Residues	Atoms					ZeroOcc	AltConf
2	A	1	Total	C	N	O	P	0	0
			31	10	6	12	3		
2	B	1	Total	C	N	O	P	0	0
			31	10	6	12	3		

- Molecule 3 is PROLINE (three-letter code: PRO) (formula: $C_5H_9NO_2$).

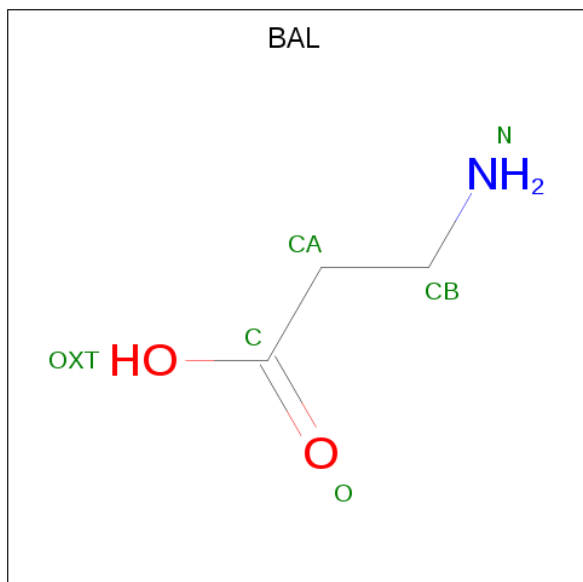


Mol	Chain	Residues	Atoms				ZeroOcc	AltConf
3	A	1	Total	C	N	O	0	0
			8	5	1	2		
3	B	1	Total	C	N	O	0	0
			8	5	1	2		

- Molecule 4 is MAGNESIUM ION (three-letter code: MG) (formula: Mg).

Mol	Chain	Residues	Atoms		ZeroOcc	AltConf
4	A	1	Total	Mg	0	0
			1	1		

- Molecule 5 is BETA-ALANINE (three-letter code: BAL) (formula: C₃H₇NO₂).



Mol	Chain	Residues	Atoms				ZeroOcc	AltConf
5	A	1	Total	C	N	O	0	0
			6	3	1	2		
5	B	1	Total	C	N	O	0	0
			6	3	1	2		

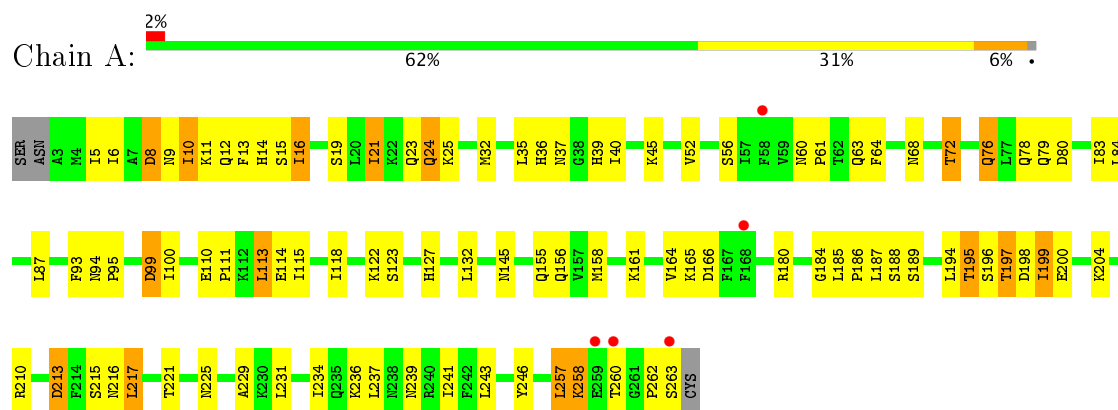
- Molecule 6 is water.

Mol	Chain	Residues	Atoms		ZeroOcc	AltConf
6	A	53	Total	O	0	0
			53	53		
6	B	53	Total	O	0	0
			53	53		

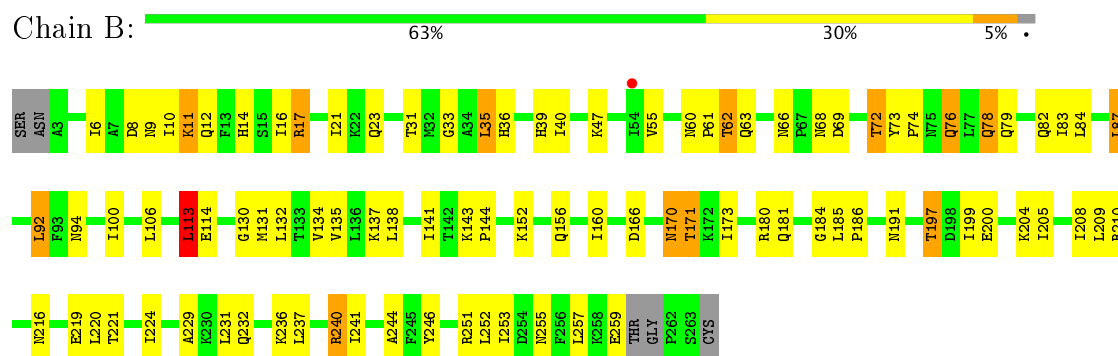
3 Residue-property plots [i](#)

These plots are drawn for all protein, RNA and DNA chains in the entry. The first graphic for a chain summarises the proportions of the various outlier classes displayed in the second graphic. The second graphic shows the sequence view annotated by issues in geometry and electron density. Residues are color-coded according to the number of geometric quality criteria for which they contain at least one outlier: green = 0, yellow = 1, orange = 2 and red = 3 or more. A red dot above a residue indicates a poor fit to the electron density ($RSRZ > 2$). Stretches of 2 or more consecutive residues without any outlier are shown as a green connector. Residues present in the sample, but not in the model, are shown in grey.

• Molecule 1: Pantothenate synthetase



• Molecule 1: Pantothenate synthetase



4 Data and refinement statistics

Property	Value	Source
Space group	P 43	Depositor
Cell constants a, b, c, α , β , γ	47.15Å 47.15Å 257.66Å 90.00° 90.00° 90.00°	Depositor
Resolution (Å)	33.34 – 2.60 46.38 – 2.60	Depositor EDS
% Data completeness (in resolution range)	97.8 (33.34-2.60) 97.8 (46.38-2.60)	Depositor EDS
R_{merge}	(Not available)	Depositor
R_{sym}	0.09	Depositor
$\langle I/\sigma(I) \rangle$ ¹	3.04 (at 2.61Å)	Xtriage
Refinement program	PHENIX (phenix.refine: dev_601)	Depositor
R, R_{free}	0.168 , 0.251 0.166 , 0.245	Depositor DCC
R_{free} test set	1668 reflections (10.99%)	DCC
Wilson B-factor (Å ²)	61.7	Xtriage
Anisotropy	0.252	Xtriage
Bulk solvent k_{sol} (e/Å ³), B_{sol} (Å ²)	0.31 , 53.0	EDS
L-test for twinning ²	$\langle L \rangle = 0.49$, $\langle L^2 \rangle = 0.32$	Xtriage
Estimated twinning fraction	0.097 for h,-k,-l	Xtriage
F_o, F_c correlation	0.96	EDS
Total number of atoms	4452	wwPDB-VP
Average B, all atoms (Å ²)	70.0	wwPDB-VP

Xtriage's analysis on translational NCS is as follows: *The largest off-origin peak in the Patterson function is 5.53% of the height of the origin peak. No significant pseudotranslation is detected.*

¹Intensities estimated from amplitudes.

²Theoretical values of $\langle |L| \rangle$, $\langle L^2 \rangle$ for acentric reflections are 0.5, 0.333 respectively for untwinned datasets, and 0.375, 0.2 for perfectly twinned datasets.

5 Model quality [i](#)

5.1 Standard geometry [i](#)

Bond lengths and bond angles in the following residue types are not validated in this section: BAL, ANP, MG

The Z score for a bond length (or angle) is the number of standard deviations the observed value is removed from the expected value. A bond length (or angle) with $|Z| > 5$ is considered an outlier worth inspection. RMSZ is the root-mean-square of all Z scores of the bond lengths (or angles).

Mol	Chain	Bond lengths		Bond angles	
		RMSZ	$\# Z > 5$	RMSZ	$\# Z > 5$
1	A	0.57	0/2166	0.75	1/2923 (0.0%)
1	B	0.56	0/2151	0.76	1/2898 (0.0%)
All	All	0.57	0/4317	0.76	2/5821 (0.0%)

There are no bond length outliers.

All (2) bond angle outliers are listed below:

Mol	Chain	Res	Type	Atoms	Z	Observed(°)	Ideal(°)
1	B	113	LEU	CA-CB-CG	5.76	128.55	115.30
1	A	113	LEU	CA-CB-CG	5.21	127.28	115.30

There are no chirality outliers.

There are no planarity outliers.

5.2 Too-close contacts [i](#)

In the following table, the Non-H and H(model) columns list the number of non-hydrogen atoms and hydrogen atoms in the chain respectively. The H(added) column lists the number of hydrogen atoms added and optimized by MolProbity. The Clashes column lists the number of clashes within the asymmetric unit, whereas Symm-Clashes lists symmetry related clashes.

Mol	Chain	Non-H	H(model)	H(added)	Clashes	Symm-Clashes
1	A	2134	0	2190	76	0
1	B	2121	0	2180	75	0
2	A	31	0	13	9	0
2	B	31	0	13	5	0
3	A	8	0	7	4	0
3	B	8	0	7	0	0
4	A	1	0	0	0	0

Continued on next page...

Continued from previous page...

Mol	Chain	Non-H	H(model)	H(added)	Clashes	Symm-Clashes
5	A	6	0	6	2	0
5	B	6	0	6	3	0
6	A	53	0	0	5	0
6	B	53	0	0	2	0
All	All	4452	0	4422	160	0

The all-atom clashscore is defined as the number of clashes found per 1000 atoms (including hydrogen atoms). The all-atom clashscore for this structure is 18.

All (160) close contacts within the same asymmetric unit are listed below, sorted by their clash magnitude.

Atom-1	Atom-2	Interatomic distance (Å)	Clash overlap (Å)
2:A:271:ANP:H5'2	3:A:274:PRO:HG2	1.53	0.89
1:A:78[B]:GLN:HE21	1:A:79:GLN:HG3	1.39	0.88
1:B:21:ILE:HG22	1:B:23:GLN:H	1.44	0.83
1:A:36:HIS:H	1:A:39:HIS:HD2	1.24	0.82
1:B:144:PRO:O	1:B:171:THR:HG23	1.80	0.81
1:B:10:ILE:CG2	1:B:14:HIS:NE2	2.53	0.71
1:A:195:THR:OG1	1:A:197:THR:HG23	1.90	0.71
1:A:194:LEU:HD13	1:A:199:ILE:HG12	1.73	0.70
1:A:94:ASN:HB3	6:A:324:HOH:O	1.91	0.70
1:B:12:GLN:O	1:B:16:ILE:HD12	1.92	0.70
1:A:158[A]:MSE:HE2	1:A:161:LYS:HD2	1.72	0.69
1:A:5:ILE:HG21	1:A:16:ILE:HD12	1.75	0.69
1:A:21:ILE:HG12	1:A:24:GLN:HG2	1.75	0.69
2:A:271:ANP:H3'	3:A:274:PRO:HG3	1.74	0.69
1:A:83:ILE:O	1:A:87:LEU:HD22	1.93	0.68
1:B:60:ASN:ND2	1:B:63:GLN:HG3	2.08	0.67
1:B:40:ILE:HD12	1:B:87:LEU:HD21	1.77	0.66
1:A:36:HIS:H	1:A:39:HIS:CD2	2.10	0.66
2:A:271:ANP:O2B	5:A:275:BAL:HB2	1.96	0.65
2:B:271:ANP:N3B	2:B:271:ANP:O2A	2.29	0.65
1:A:114:GLU:OE1	1:A:114:GLU:HA	1.95	0.65
1:A:213:ASP:HB3	1:A:215:SER:OG	1.95	0.65
1:B:31[A]:THR:HG22	1:B:33:GLY:H	1.61	0.64
1:B:78[B]:GLN:O	1:B:82:GLN:HG2	1.98	0.63
1:B:62:THR:HG23	1:B:130:GLY:HA2	1.80	0.63
1:B:68:ASN:O	1:B:72:THR:HB	1.99	0.63
1:A:210:ARG:NH1	1:B:82:GLN:HG3	2.15	0.62
1:A:21:ILE:CD1	1:A:24:GLN:HG2	2.31	0.61
1:B:78[B]:GLN:CD	1:B:78[B]:GLN:H	2.05	0.60

Continued on next page...

Continued from previous page...

Atom-1	Atom-2	Interatomic distance (Å)	Clash overlap (Å)
1:B:21:ILE:HD12	1:B:21:ILE:N	2.16	0.59
1:A:32:MSE:HE1	1:A:64:PHE:CZ	2.37	0.59
1:A:180:ARG:HD3	1:A:184:GLY:O	2.03	0.59
1:A:216[B]:ASN:HD22	1:A:216[B]:ASN:C	2.06	0.59
1:B:78[A]:GLN:O	1:B:82:GLN:HG2	2.01	0.58
1:B:76:GLN:HB3	1:B:79:GLN:NE2	2.18	0.58
1:A:9:ASN:ND2	1:A:12:GLN:HG3	2.19	0.58
1:A:8:ASP:HA	6:A:324:HOH:O	2.04	0.58
1:A:78[B]:GLN:NE2	1:A:79:GLN:HG3	2.15	0.57
1:A:68:ASN:O	1:A:72:THR:HB	2.03	0.57
1:A:21:ILE:HG13	1:A:23:GLN:HB2	1.85	0.57
1:A:236:LYS:O	1:A:237:LEU:HD12	2.04	0.57
1:B:221:THR:HG23	1:B:231:LEU:HD23	1.87	0.56
2:A:271:ANP:O2G	2:A:271:ANP:O1B	2.22	0.56
2:A:271:ANP:O2G	2:A:271:ANP:PA	2.64	0.56
1:A:210:ARG:HH11	1:B:82:GLN:HG3	1.71	0.55
1:B:62:THR:CG2	1:B:130:GLY:HA2	2.36	0.55
1:A:110[B]:GLU:OE2	1:A:111:PRO:HD2	2.07	0.55
1:B:10:ILE:HG23	1:B:14:HIS:NE2	2.21	0.54
1:B:197:THR:O	1:B:200:GLU:HG2	2.06	0.54
1:A:195:THR:HG23	1:A:198[A]:ASP:CG	2.28	0.54
1:A:21:ILE:CG1	1:A:24:GLN:HG2	2.37	0.54
1:B:210:ARG:HG3	1:B:210:ARG:HH21	1.73	0.54
1:A:5:ILE:HG21	1:A:16:ILE:CD1	2.37	0.53
1:B:78[B]:GLN:N	1:B:78[B]:GLN:CD	2.62	0.53
2:B:271:ANP:PB	5:B:275:BAL:HB3	2.49	0.53
1:A:78[B]:GLN:H	1:A:78[B]:GLN:CD	2.11	0.53
1:A:158[A]:MSE:HE3	6:A:297:HOH:O	2.08	0.53
1:A:200:GLU:HG3	1:A:204:LYS:HE3	1.91	0.53
2:A:271:ANP:PB	5:A:275:BAL:HB2	2.50	0.52
1:A:36:HIS:O	1:A:40:ILE:HG13	2.10	0.52
1:B:236:LYS:HA	1:B:240:ARG:O	2.10	0.52
1:B:205:ILE:HG23	1:B:224:ILE:HG13	1.92	0.52
1:B:216:ASN:OD1	1:B:219:GLU:HB2	2.11	0.51
1:B:79:GLN:O	1:B:83:ILE:HG13	2.09	0.51
1:B:241:ILE:O	1:B:255:ASN:HA	2.10	0.51
1:B:232:GLN:HE22	1:B:246:TYR:HE2	1.58	0.51
1:A:195:THR:HG1	1:A:197:THR:HG23	1.74	0.51
2:A:271:ANP:H3'	3:A:274:PRO:CG	2.41	0.50
1:A:16:ILE:O	1:A:19:SER:HB2	2.11	0.50
1:B:156:GLN:NE2	6:B:284:HOH:O	2.44	0.50

Continued on next page...

Continued from previous page...

Atom-1	Atom-2	Interatomic distance (Å)	Clash overlap (Å)
1:B:232:GLN:NE2	1:B:246:TYR:HE2	2.10	0.50
1:B:131:MSE:HG3	1:B:156:GLN:NE2	2.27	0.49
1:A:195:THR:HG23	1:A:198[A]:ASP:OD2	2.13	0.49
1:A:210:ARG:HD2	1:B:82:GLN:HB3	1.94	0.49
1:B:10:ILE:HG22	1:B:14:HIS:CD2	2.47	0.49
1:A:221:THR:HG22	1:A:225:ASN:ND2	2.27	0.49
1:B:21:ILE:HG22	1:B:23:GLN:N	2.21	0.49
1:A:39:HIS:HE1	2:A:271:ANP:O1A	1.95	0.49
1:B:180:ARG:HD3	1:B:184:GLY:O	2.12	0.49
1:B:244:ALA:CB	1:B:253:ILE:HG22	2.43	0.49
1:B:191:ASN:OD1	1:B:252:LEU:HD21	2.13	0.48
1:B:205:ILE:HD11	1:B:229:ALA:HB2	1.95	0.48
1:B:246:TYR:CE1	1:B:251:ARG:HB2	2.48	0.48
1:B:9:ASN:OD1	1:B:11:LYS:HG3	2.14	0.48
1:A:10:ILE:HG22	1:A:14:HIS:CD2	2.48	0.48
1:A:185:LEU:HD12	1:A:186:PRO:HD2	1.96	0.48
1:B:244:ALA:HB2	1:B:253:ILE:HG22	1.96	0.47
1:A:241:ILE:HD12	1:A:258:LYS:HA	1.96	0.47
1:A:155:GLN:HG3	6:A:299:HOH:O	2.14	0.46
1:A:37:ASN:HB2	1:A:187:LEU:HD13	1.97	0.46
1:B:210:ARG:NH2	1:B:210:ARG:HG3	2.29	0.46
1:B:17:ARG:HA	1:B:17:ARG:HD2	1.72	0.46
1:B:35:LEU:HA	1:B:39:HIS:ND1	2.30	0.46
1:A:12:GLN:O	1:A:16:ILE:HG12	2.16	0.46
1:A:200:GLU:O	1:A:204:LYS:HG3	2.16	0.46
1:A:115:ILE:HD12	1:A:118:ILE:HD11	1.97	0.46
1:B:60:ASN:HD21	1:B:62:THR:HG22	1.80	0.46
1:A:216[B]:ASN:HD22	1:A:217:LEU:N	2.13	0.45
1:B:17:ARG:NH1	1:B:143:LYS:HB2	2.30	0.45
1:B:160:ILE:HG22	1:B:173:ILE:HD11	1.99	0.45
1:A:229:ALA:HB1	1:A:246:TYR:O	2.16	0.45
1:A:24:GLN:HE22	1:A:52:VAL:HG23	1.81	0.45
1:A:76:GLN:HG3	1:A:76:GLN:H	1.55	0.45
1:B:31[A]:THR:HG21	1:B:35:LEU:CD1	2.47	0.45
1:B:36:HIS:O	1:B:40:ILE:HG12	2.16	0.45
1:B:100:ILE:O	1:B:137:LYS:HE2	2.16	0.45
1:A:194:LEU:HD12	1:A:194:LEU:O	2.16	0.44
1:A:156:GLN:OE1	3:A:274:PRO:HA	2.18	0.44
1:B:10:ILE:HG23	1:B:14:HIS:CE1	2.51	0.44
1:A:56:SER:HA	1:A:93:PHE:O	2.18	0.44
1:B:55:VAL:HG11	1:B:84:LEU:HD21	2.00	0.43

Continued on next page...

Continued from previous page...

Atom-1	Atom-2	Interatomic distance (Å)	Clash overlap (Å)
1:B:10:ILE:HD11	1:B:141:ILE:HD13	2.00	0.43
1:A:25:LYS:HA	1:A:145:ASN:OD1	2.18	0.43
1:A:195:THR:OG1	1:A:197:THR:N	2.51	0.43
1:B:113:LEU:N	1:B:113:LEU:HD12	2.32	0.43
1:B:132:LEU:HA	1:B:132:LEU:HD23	1.83	0.43
1:B:76:GLN:HB3	1:B:79:GLN:CD	2.39	0.43
1:B:8[B]:ASP:OD1	1:B:9:ASN:ND2	2.52	0.43
1:A:115:ILE:O	1:A:155:GLN:NE2	2.52	0.42
1:A:122:LYS:HE3	1:A:122:LYS:HB3	1.78	0.42
1:B:204:LYS:O	1:B:208:ILE:HG13	2.19	0.42
2:A:271:ANP:O2G	2:A:271:ANP:H8	2.19	0.42
1:A:95:PRO:HG3	1:A:100:ILE:HD11	2.01	0.42
1:A:257:LEU:HD22	6:A:321:HOH:O	2.20	0.42
1:B:220:LEU:O	1:B:224:ILE:HD13	2.20	0.42
1:B:60:ASN:HA	1:B:61:PRO:HD3	1.72	0.42
1:A:132:LEU:HD23	1:A:132:LEU:HA	1.94	0.42
1:B:156:GLN:HB2	6:B:284:HOH:O	2.19	0.42
1:A:243:LEU:N	1:A:243:LEU:HD23	2.35	0.42
1:A:262:PRO:O	1:A:263:SER:HB3	2.19	0.42
1:A:83:ILE:O	1:A:87:LEU:CD2	2.66	0.42
1:A:9:ASN:OD1	1:A:11:LYS:HB3	2.20	0.41
1:B:131:MSE:O	1:B:135:VAL:HG23	2.20	0.41
1:B:73:TYR:CG	1:B:74:PRO:HD2	2.55	0.41
1:B:66:ASN:O	1:B:69:ASP:HB3	2.19	0.41
1:A:10:ILE:CG2	1:A:14:HIS:CD2	3.03	0.41
1:A:80:ASP:O	1:A:84:LEU:HG	2.20	0.41
1:A:13:PHE:CD2	1:A:13:PHE:C	2.93	0.41
1:A:35:LEU:HA	1:A:39:HIS:CD2	2.56	0.41
1:A:60:ASN:HA	1:A:61:PRO:HD2	1.79	0.41
2:B:271:ANP:O2B	5:B:275:BAL:N	2.53	0.41
1:A:213:ASP:C	1:A:215:SER:H	2.23	0.41
1:A:231:LEU:HD21	1:A:234:ILE:HB	2.03	0.41
1:A:99:ASP:OD1	1:A:99:ASP:N	2.54	0.41
2:B:271:ANP:O2B	5:B:275:BAL:HB3	2.19	0.41
1:B:83:ILE:O	1:B:87:LEU:HD22	2.20	0.41
1:A:32:MSE:HE1	1:A:64:PHE:HZ	1.85	0.41
1:B:60:ASN:ND2	1:B:134:VAL:HB	2.36	0.41
1:B:181:GLN:OE1	1:B:181:GLN:HA	2.20	0.41
1:B:185:LEU:HA	1:B:186:PRO:HD2	1.79	0.41
1:B:62:THR:CG2	1:B:130:GLY:CA	2.99	0.41
1:A:239:ASN:O	1:A:258:LYS:HB3	2.21	0.41

Continued on next page...

Continued from previous page...

Atom-1	Atom-2	Interatomic distance (Å)	Clash overlap (Å)
1:B:6:ILE:HG23	1:B:92:LEU:HD13	2.03	0.41
1:A:63:GLN:O	1:A:127:HIS:HD2	2.04	0.40
1:A:21:ILE:HG12	1:A:24:GLN:CG	2.48	0.40
1:B:170[A]:ASN:HA	1:B:170[A]:ASN:HD22	1.65	0.40
1:B:241:ILE:HD13	1:B:241:ILE:N	2.35	0.40
1:B:138:LEU:HA	1:B:138:LEU:HD23	1.75	0.40
1:B:21:ILE:CD1	1:B:21:ILE:N	2.83	0.40
1:B:152:LYS:NZ	2:B:271:ANP:O1G	2.55	0.40

There are no symmetry-related clashes.

5.3 Torsion angles [i](#)

5.3.1 Protein backbone [i](#)

In the following table, the Percentiles column shows the percent Ramachandran outliers of the chain as a percentile score with respect to all X-ray entries followed by that with respect to entries of similar resolution.

The Analysed column shows the number of residues for which the backbone conformation was analysed, and the total number of residues.

Mol	Chain	Analysed	Favoured	Allowed	Outliers	Percentiles	
1	A	264/264 (100%)	259 (98%)	5 (2%)	0	100	100
1	B	260/264 (98%)	256 (98%)	4 (2%)	0	100	100
All	All	524/528 (99%)	515 (98%)	9 (2%)	0	100	100

There are no Ramachandran outliers to report.

5.3.2 Protein sidechains [i](#)

In the following table, the Percentiles column shows the percent sidechain outliers of the chain as a percentile score with respect to all X-ray entries followed by that with respect to entries of similar resolution.

The Analysed column shows the number of residues for which the sidechain conformation was analysed, and the total number of residues.

Mol	Chain	Analysed	Rotameric	Outliers	Percentiles	
1	A	245/239 (102%)	218 (89%)	27 (11%)	7	13

Continued on next page...

Continued from previous page...

Mol	Chain	Analysed	Rotameric	Outliers	Percentiles	
1	B	244/239 (102%)	218 (89%)	26 (11%)	8	14
All	All	489/478 (102%)	436 (89%)	53 (11%)	8	14

All (53) residues with a non-rotameric sidechain are listed below:

Mol	Chain	Res	Type
1	A	6	ILE
1	A	8	ASP
1	A	10	ILE
1	A	15	SER
1	A	16	ILE
1	A	21	ILE
1	A	24	GLN
1	A	45	LYS
1	A	72	THR
1	A	76	GLN
1	A	99	ASP
1	A	113	LEU
1	A	123	SER
1	A	164	VAL
1	A	165	LYS
1	A	166	ASP
1	A	188	SER
1	A	189	SER
1	A	195	THR
1	A	196	SER
1	A	197	THR
1	A	199	ILE
1	A	213	ASP
1	A	217	LEU
1	A	257	LEU
1	A	258	LYS
1	A	260	THR
1	B	11	LYS
1	B	17	ARG
1	B	35	LEU
1	B	47	LYS
1	B	62	THR
1	B	72	THR
1	B	76	GLN
1	B	78[A]	GLN
1	B	78[B]	GLN

Continued on next page...

Continued from previous page...

Mol	Chain	Res	Type
1	B	87	LEU
1	B	92	LEU
1	B	94	ASN
1	B	106	LEU
1	B	113	LEU
1	B	114	GLU
1	B	166	ASP
1	B	170[A]	ASN
1	B	170[B]	ASN
1	B	171	THR
1	B	197	THR
1	B	199	ILE
1	B	209	LEU
1	B	237	LEU
1	B	240	ARG
1	B	257	LEU
1	B	259	GLU

Some sidechains can be flipped to improve hydrogen bonding and reduce clashes. All (5) such sidechains are listed below:

Mol	Chain	Res	Type
1	A	24	GLN
1	A	39	HIS
1	A	60	ASN
1	A	79	GLN
1	A	127	HIS

5.3.3 RNA ⓘ

There are no RNA molecules in this entry.

5.4 Non-standard residues in protein, DNA, RNA chains ⓘ

There are no non-standard protein/DNA/RNA residues in this entry.

5.5 Carbohydrates ⓘ

There are no carbohydrates in this entry.

5.6 Ligand geometry

Of 7 ligands modelled in this entry, 1 is monoatomic - leaving 6 for Mogul analysis.

In the following table, the Counts columns list the number of bonds (or angles) for which Mogul statistics could be retrieved, the number of bonds (or angles) that are observed in the model and the number of bonds (or angles) that are defined in the Chemical Component Dictionary. The Link column lists molecule types, if any, to which the group is linked. The Z score for a bond length (or angle) is the number of standard deviations the observed value is removed from the expected value. A bond length (or angle) with $|Z| > 2$ is considered an outlier worth inspection. RMSZ is the root-mean-square of all Z scores of the bond lengths (or angles).

Mol	Type	Chain	Res	Link	Bond lengths			Bond angles		
					Counts	RMSZ	# Z > 2	Counts	RMSZ	# Z > 2
2	ANP	A	271	4	29,33,33	2.65	6 (20%)	28,52,52	1.96	4 (14%)
3	PRO	A	274	-	5,8,8	0.67	0	6,10,10	1.14	0
5	BAL	A	275	-	2,5,5	0.38	0	2,5,5	3.14	1 (50%)
2	ANP	B	271	-	29,33,33	2.69	6 (20%)	28,52,52	2.12	4 (14%)
3	PRO	B	272	-	5,8,8	1.08	1 (20%)	6,10,10	1.13	0
5	BAL	B	275	-	2,5,5	0.75	0	2,5,5	0.40	0

In the following table, the Chirals column lists the number of chiral outliers, the number of chiral centers analysed, the number of these observed in the model and the number defined in the Chemical Component Dictionary. Similar counts are reported in the Torsion and Rings columns. '-' means no outliers of that kind were identified.

Mol	Type	Chain	Res	Link	Chirals	Torsions	Rings
2	ANP	A	271	4	-	1/13/38/38	0/3/3/3
3	PRO	A	274	-	-	0/0/11/11	0/1/1/1
5	BAL	A	275	-	-	0/1/3/3	0/0/0/0
2	ANP	B	271	-	-	1/13/38/38	0/3/3/3
3	PRO	B	272	-	-	0/0/11/11	0/1/1/1
5	BAL	B	275	-	-	0/1/3/3	0/0/0/0

All (13) bond length outliers are listed below:

Mol	Chain	Res	Type	Atoms	Z	Observed(Å)	Ideal(Å)
2	B	271	ANP	PB-O3A	-5.36	1.52	1.59
2	A	271	ANP	C2'-C3'	-4.16	1.42	1.53
2	B	271	ANP	C2'-C3'	-4.08	1.42	1.53
2	A	271	ANP	C2'-C1'	-3.78	1.47	1.53
2	A	271	ANP	O4'-C4'	-3.11	1.38	1.45
2	A	271	ANP	PB-O3A	-2.74	1.55	1.59
2	B	271	ANP	O4'-C4'	-2.44	1.39	1.45

Continued on next page...

Continued from previous page...

Mol	Chain	Res	Type	Atoms	Z	Observed(Å)	Ideal(Å)
2	B	271	ANP	C2'-C1'	-2.40	1.49	1.53
3	B	272	PRO	CB-CA	-2.18	1.52	1.54
2	B	271	ANP	PB-N3B	2.42	1.69	1.63
2	A	271	ANP	PB-N3B	2.86	1.70	1.63
2	B	271	ANP	PB-O1B	10.50	1.58	1.46
2	A	271	ANP	PB-O1B	10.84	1.58	1.46

All (9) bond angle outliers are listed below:

Mol	Chain	Res	Type	Atoms	Z	Observed(°)	Ideal(°)
2	B	271	ANP	N3-C2-N1	-7.76	122.10	128.86
2	A	271	ANP	N3-C2-N1	-7.32	122.48	128.86
2	B	271	ANP	PA-O3A-PB	-5.10	114.38	132.38
2	B	271	ANP	O3A-PB-N3B	-2.16	100.59	106.59
2	A	271	ANP	O2B-PB-O1B	-2.13	105.44	109.87
2	A	271	ANP	O1B-PB-N3B	3.70	117.32	111.79
2	B	271	ANP	O1B-PB-N3B	3.77	117.43	111.79
2	A	271	ANP	O5'-C5'-C4'	3.80	122.48	109.00
5	A	275	BAL	CB-CA-C	4.41	121.08	112.70

There are no chirality outliers.

All (2) torsion outliers are listed below:

Mol	Chain	Res	Type	Atoms
2	A	271	ANP	O1G-PG-N3B-PB
2	B	271	ANP	O1G-PG-N3B-PB

There are no ring outliers.

5 monomers are involved in 15 short contacts:

Mol	Chain	Res	Type	Clashes	Symm-Clashes
2	A	271	ANP	9	0
3	A	274	PRO	4	0
5	A	275	BAL	2	0
2	B	271	ANP	5	0
5	B	275	BAL	3	0

5.7 Other polymers

There are no such residues in this entry.

5.8 Polymer linkage issues

There are no chain breaks in this entry.

6 Fit of model and data [i](#)

6.1 Protein, DNA and RNA chains [i](#)

In the following table, the column labelled ‘#RSRZ> 2’ contains the number (and percentage) of RSRZ outliers, followed by percent RSRZ outliers for the chain as percentile scores relative to all X-ray entries and entries of similar resolution. The OWAB column contains the minimum, median, 95th percentile and maximum values of the occupancy-weighted average B-factor per residue. The column labelled ‘Q< 0.9’ lists the number of (and percentage) of residues with an average occupancy less than 0.9.

Mol	Chain	Analysed	<RSRZ>	#RSRZ>2		OWAB(Å ²)	Q<0.9
1	A	257/264 (97%)	-0.12	5 (1%)	67 61	43, 65, 114, 158	2 (0%)
1	B	255/264 (96%)	-0.17	1 (0%)	92 91	45, 66, 103, 136	0
All	All	512/528 (96%)	-0.15	6 (1%)	79 75	43, 65, 107, 158	2 (0%)

All (6) RSRZ outliers are listed below:

Mol	Chain	Res	Type	RSRZ
1	A	260	THR	3.3
1	A	263	SER	2.9
1	A	259	GLU	2.7
1	A	168	PHE	2.6
1	B	54	ILE	2.1
1	A	58	PHE	2.0

6.2 Non-standard residues in protein, DNA, RNA chains [i](#)

There are no non-standard protein/DNA/RNA residues in this entry.

6.3 Carbohydrates [i](#)

There are no carbohydrates in this entry.

6.4 Ligands [i](#)

In the following table, the Atoms column lists the number of modelled atoms in the group and the number defined in the chemical component dictionary. LLDF column lists the quality of electron density of the group with respect to its neighbouring residues in protein, DNA or RNA chains. The B-factors column lists the minimum, median, 95th percentile and maximum values of B factors

of atoms in the group. The column labelled 'Q< 0.9' lists the number of atoms with occupancy less than 0.9.

Mol	Type	Chain	Res	Atoms	RSCC	RSR	LLDF	B-factors(\AA^2)	Q<0.9
3	PRO	A	274	8/8	0.95	0.57	9.50	50,62,77,87	8
3	PRO	B	272	8/8	0.93	0.31	5.13	62,67,74,74	8
5	BAL	A	275	6/6	0.90	0.24	3.45	74,80,81,85	0
2	ANP	A	271	31/31	0.97	0.18	1.16	38,59,240,267	0
5	BAL	B	275	6/6	0.96	0.16	0.97	74,81,82,85	0
2	ANP	B	271	31/31	0.98	0.17	0.85	44,55,231,248	1
4	MG	A	273	1/1	0.93	0.27	-	65,65,65,65	0

6.5 Other polymers [i](#)

There are no such residues in this entry.