



Full wwPDB X-ray Structure Validation Report ⓘ

Oct 15, 2017 – 01:24 AM EDT

PDB ID : 2QWP
Title : Crystal structure of disulfide-bond-crosslinked complex of bovine hsc70 (1-394aa)R171C and bovine Auxilin (810-910aa)D876C in the ADP*Pi form #2
Authors : Jiang, J.; Maes, E.G.; Wang, L.; Taylor, A.B.; Hinck, A.P.; Lafer, E.M.; Sousa, R.
Deposited on : unknown
Resolution : 1.75 Å(reported)

This is a Full wwPDB X-ray Structure Validation Report for a publicly released PDB entry.

We welcome your comments at validation@mail.wwpdb.org

A user guide is available at

<http://wwpdb.org/validation/2016/XrayValidationReportHelp>

with specific help available everywhere you see the ⓘ symbol.

The following versions of software and data (see [references ⓘ](#)) were used in the production of this report:

MolProbity : 4.02b-467
Mogul : 1.7.2 (RC1), CSD as538be (2017)
Xtriage (Phenix) : 1.9-1692
EDS : rb-20030345
Percentile statistics : 20161228.v01 (using entries in the PDB archive December 28th 2016)
Refmac : 5.8.0135
CCP4 : 6.5.0
Ideal geometry (proteins) : Engh & Huber (2001)
Ideal geometry (DNA, RNA) : Parkinson et al. (1996)
Validation Pipeline (wwPDB-VP) : rb-20030345

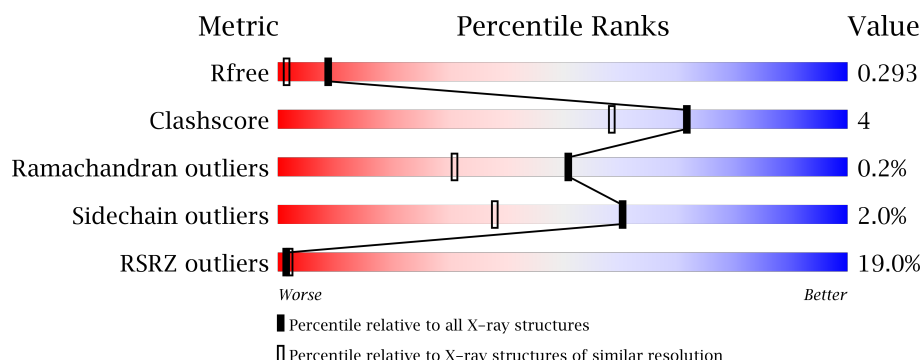
1 Overall quality at a glance

The following experimental techniques were used to determine the structure:

X-RAY DIFFRACTION

The reported resolution of this entry is 1.75 Å.

Percentile scores (ranging between 0-100) for global validation metrics of the entry are shown in the following graphic. The table shows the number of entries on which the scores are based.



Metric	Whole archive (#Entries)	Similar resolution (#Entries, resolution range(Å))
R_{free}	100719	1762 (1.76-1.76)
Clashscore	112137	1889 (1.76-1.76)
Ramachandran outliers	110173	1868 (1.76-1.76)
Sidechain outliers	110143	1868 (1.76-1.76)
RSRZ outliers	101464	1770 (1.76-1.76)

The table below summarises the geometric issues observed across the polymeric chains and their fit to the electron density. The red, orange, yellow and green segments on the lower bar indicate the fraction of residues that contain outliers for ≥ 3 , 2, 1 and 0 types of geometric quality criteria. A grey segment represents the fraction of residues that are not modelled. The numeric value for each fraction is indicated below the corresponding segment, with a dot representing fractions $\leq 5\%$. The upper red bar (where present) indicates the fraction of residues that have poor fit to the electron density. The numeric value is given above the bar.

Mol	Chain	Length	Quality of chain
1	A	394	<div> <div>22%</div> <div> <div></div> <div>90%</div> <div>8%</div> <div></div> </div> </div>
2	B	92	<div> <div>5%</div> <div> <div></div> <div>89%</div> <div>9%</div> <div></div> </div> </div>

The following table lists non-polymeric compounds, carbohydrate monomers and non-standard residues in protein, DNA, RNA chains that are outliers for geometric or electron-density-fit criteria:

Mol	Type	Chain	Res	Chirality	Geometry	Clashes	Electron density
7	ACY	A	1022	-	-	X	-

2 Entry composition

There are 9 unique types of molecules in this entry. The entry contains 4078 atoms, of which 0 are hydrogens and 0 are deuteriums.

In the tables below, the ZeroOcc column contains the number of atoms modelled with zero occupancy, the AltConf column contains the number of residues with at least one atom in alternate conformation and the Trace column contains the number of residues modelled with at most 2 atoms.

- Molecule 1 is a protein called Heat shock cognate 71 kDa protein.

Mol	Chain	Residues	Atoms					ZeroOcc	AltConf	Trace
1	A	386	Total	C	N	O	S	0	0	0
			2983	1870	522	582	9			

There is a discrepancy between the modelled and reference sequences:

Chain	Residue	Modelled	Actual	Comment	Reference
A	171	CYS	ARG	ENGINEERED	UNP P19120

- Molecule 2 is a protein called Putative tyrosine-protein phosphatase auxilin.

Mol	Chain	Residues	Atoms					ZeroOcc	AltConf	Trace
2	B	92	Total	C	N	O	S	0	0	0
			754	488	126	135	5			

There is a discrepancy between the modelled and reference sequences:

Chain	Residue	Modelled	Actual	Comment	Reference
B	876	CYS	ASP	ENGINEERED	UNP Q27974

- Molecule 3 is PHOSPHATE ION (three-letter code: PO4) (formula: O₄P).



Mol	Chain	Residues	Atoms			ZeroOcc	AltConf
3	A	1	Total	O	P	0	0
			5	4	1		

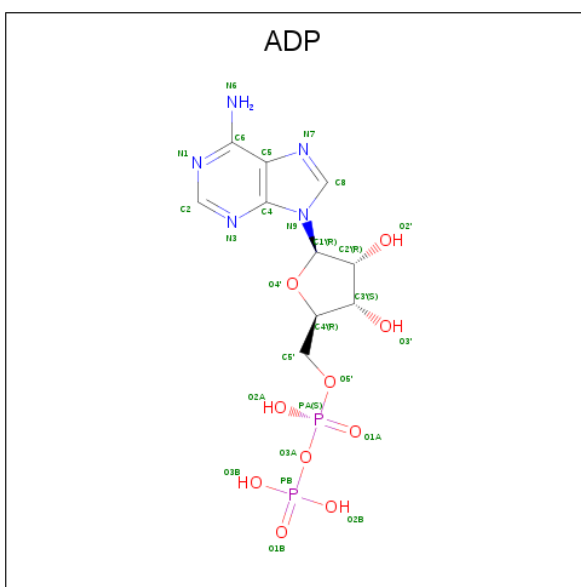
- Molecule 4 is SODIUM ION (three-letter code: NA) (formula: Na).

Mol	Chain	Residues	Atoms		ZeroOcc	AltConf
4	A	2	Total	Na	0	0
			2	2		

- Molecule 5 is MAGNESIUM ION (three-letter code: MG) (formula: Mg).

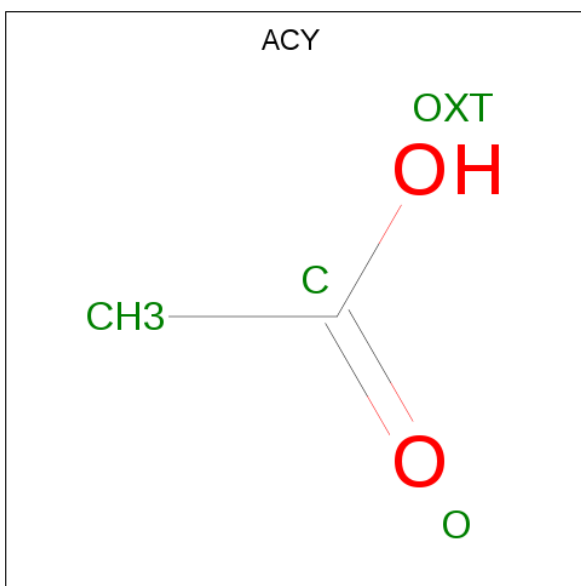
Mol	Chain	Residues	Atoms		ZeroOcc	AltConf
5	A	1	Total	Mg	0	0
			1	1		

- Molecule 6 is ADENOSINE-5'-DIPHOSPHATE (three-letter code: ADP) (formula: C₁₀H₁₅N₅O₁₀P₂).



Mol	Chain	Residues	Atoms					ZeroOcc	AltConf
6	A	1	Total	C	N	O	P	0	0
			27	10	5	10	2		

- Molecule 7 is ACETIC ACID (three-letter code: ACY) (formula: $C_2H_4O_2$).



Mol	Chain	Residues	Atoms			ZeroOcc	AltConf
7	A	1	Total	C	O	0	0
			4	2	2		

- Molecule 8 is GLYCEROL (three-letter code: GOL) (formula: $\text{C}_3\text{H}_8\text{O}_3$).



Mol	Chain	Residues	Atoms			ZeroOcc	AltConf
8	A	1	Total	C	O	0	0
			6	3	3		
8	A	1	Total	C	O	0	0
			6	3	3		

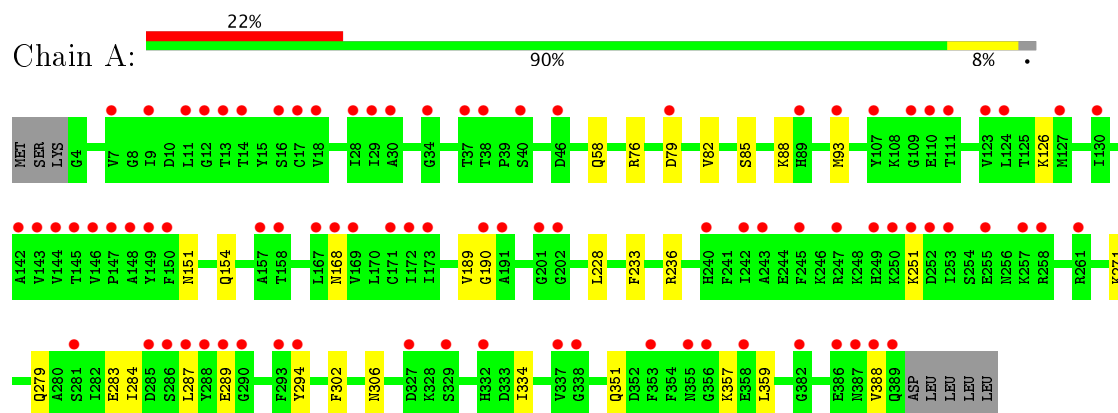
- Molecule 9 is water.

Mol	Chain	Residues	Atoms		ZeroOcc	AltConf
9	A	242	Total	O	0	0
			242	242		
9	B	48	Total	O	0	0
			48	48		

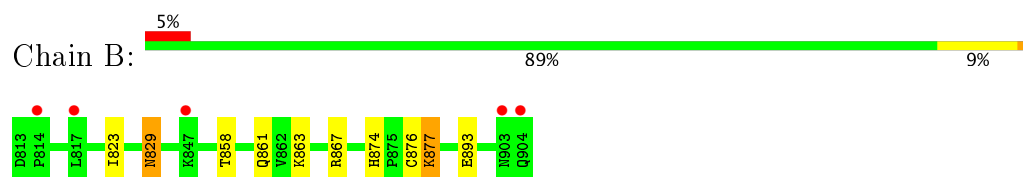
3 Residue-property plots [i](#)

These plots are drawn for all protein, RNA and DNA chains in the entry. The first graphic for a chain summarises the proportions of the various outlier classes displayed in the second graphic. The second graphic shows the sequence view annotated by issues in geometry and electron density. Residues are color-coded according to the number of geometric quality criteria for which they contain at least one outlier: green = 0, yellow = 1, orange = 2 and red = 3 or more. A red dot above a residue indicates a poor fit to the electron density ($RSRZ > 2$). Stretches of 2 or more consecutive residues without any outlier are shown as a green connector. Residues present in the sample, but not in the model, are shown in grey.

- Molecule 1: Heat shock cognate 71 kDa protein



- Molecule 2: Putative tyrosine-protein phosphatase auxilin



4 Data and refinement statistics

Property	Value	Source
Space group	P 21 21 21	Depositor
Cell constants a, b, c, α , β , γ	38.65Å 58.64Å 225.56Å 90.00° 90.00° 90.00°	Depositor
Resolution (Å)	40.66 – 1.75 40.65 – 1.75	Depositor EDS
% Data completeness (in resolution range)	91.2 (40.66-1.75) 91.2 (40.65-1.75)	Depositor EDS
R_{merge}	0.08	Depositor
R_{sym}	(Not available)	Depositor
$\langle I/\sigma(I) \rangle$ ¹	2.57 (at 1.75Å)	Xtriage
Refinement program	REFMAC 5.2.0019	Depositor
R, R_{free}	0.203 , 0.243 0.260 , 0.293	Depositor DCC
R_{free} test set	2436 reflections (5.04%)	DCC
Wilson B-factor (Å ²)	25.5	Xtriage
Anisotropy	0.140	Xtriage
Bulk solvent k_{sol} (e/Å ³), B_{sol} (Å ²)	0.34 , 37.2	EDS
L-test for twinning ²	$\langle L \rangle = 0.47$, $\langle L^2 \rangle = 0.31$	Xtriage
Estimated twinning fraction	No twinning to report.	Xtriage
F_o, F_c correlation	0.93	EDS
Total number of atoms	4078	wwPDB-VP
Average B, all atoms (Å ²)	27.0	wwPDB-VP

Xtriage's analysis on translational NCS is as follows: *The largest off-origin peak in the Patterson function is 4.84% of the height of the origin peak. No significant pseudotranslation is detected.*

¹Intensities estimated from amplitudes.

²Theoretical values of $\langle |L| \rangle$, $\langle L^2 \rangle$ for acentric reflections are 0.5, 0.333 respectively for untwinned datasets, and 0.375, 0.2 for perfectly twinned datasets.

5 Model quality

5.1 Standard geometry

Bond lengths and bond angles in the following residue types are not validated in this section: GOL, MG, ADP, NA, PO4, ACY

The Z score for a bond length (or angle) is the number of standard deviations the observed value is removed from the expected value. A bond length (or angle) with $|Z| > 5$ is considered an outlier worth inspection. RMSZ is the root-mean-square of all Z scores of the bond lengths (or angles).

Mol	Chain	Bond lengths		Bond angles	
		RMSZ	# Z >5	RMSZ	# Z >5
1	A	0.55	0/3029	0.60	0/4091
2	B	0.52	0/773	0.54	0/1046
All	All	0.55	0/3802	0.59	0/5137

There are no bond length outliers.

There are no bond angle outliers.

There are no chirality outliers.

There are no planarity outliers.

5.2 Too-close contacts

In the following table, the Non-H and H(model) columns list the number of non-hydrogen atoms and hydrogen atoms in the chain respectively. The H(added) column lists the number of hydrogen atoms added and optimized by MolProbity. The Clashes column lists the number of clashes within the asymmetric unit, whereas Symm-Clashes lists symmetry related clashes.

Mol	Chain	Non-H	H(model)	H(added)	Clashes	Symm-Clashes
1	A	2983	0	2978	19	0
2	B	754	0	760	9	0
3	A	5	0	0	0	0
4	A	2	0	0	0	0
5	A	1	0	0	0	0
6	A	27	0	12	0	0
7	A	4	0	3	5	0
8	A	12	0	16	0	0
9	A	242	0	0	5	0
9	B	48	0	0	1	0
All	All	4078	0	3769	30	0

The all-atom clashscore is defined as the number of clashes found per 1000 atoms (including hydrogen atoms). The all-atom clashscore for this structure is 4.

All (30) close contacts within the same asymmetric unit are listed below, sorted by their clash magnitude.

Atom-1	Atom-2	Interatomic distance (Å)	Clash overlap (Å)
2:B:877:LYS:HD3	9:B:916:HOH:O	1.73	0.89
1:A:151:ASN:H	1:A:154:GLN:HE21	1.29	0.77
2:B:874:HIS:HD2	2:B:876:CYS:H	1.34	0.76
7:A:1022:ACY:H3	9:A:3227:HOH:O	1.88	0.72
2:B:858:THR:H	2:B:861:GLN:HE21	1.38	0.72
1:A:126:LYS:NZ	7:A:1022:ACY:H1	2.04	0.71
1:A:168:ASN:HB3	9:A:3290:HOH:O	1.91	0.70
1:A:236:ARG:HD3	9:A:3303:HOH:O	1.91	0.69
1:A:233:PHE:HA	1:A:306:ASN:HD21	1.63	0.64
1:A:85:SER:O	1:A:88:LYS:HG2	2.01	0.60
2:B:863:LYS:HE2	2:B:867:ARG:HH21	1.66	0.60
2:B:874:HIS:CD2	2:B:876:CYS:H	2.19	0.54
1:A:151:ASN:H	1:A:154:GLN:NE2	2.03	0.54
1:A:233:PHE:HA	1:A:306:ASN:ND2	2.23	0.53
1:A:251:LYS:NZ	1:A:289:GLU:OE1	2.36	0.52
1:A:189:VAL:HG12	1:A:190:GLY:N	2.26	0.50
1:A:126:LYS:HZ1	7:A:1022:ACY:H1	1.76	0.49
2:B:863:LYS:HE2	2:B:867:ARG:NH2	2.30	0.47
7:A:1022:ACY:CH3	9:A:3227:HOH:O	2.57	0.47
2:B:823:ILE:HG12	2:B:893:GLU:HG2	1.98	0.46
1:A:351:GLN:HG3	1:A:357:LYS:O	2.16	0.46
1:A:271:LYS:HG3	1:A:302:PHE:CZ	2.51	0.45
1:A:334:ILE:HD11	1:A:357:LYS:HD3	1.99	0.45
9:A:3338:HOH:O	2:B:874:HIS:HE1	2.00	0.44
1:A:283:GLU:HG2	1:A:294:TYR:CD1	2.52	0.43
1:A:76:ARG:CZ	1:A:82:VAL:HG11	2.49	0.43
2:B:829:ASN:HD22	2:B:829:ASN:C	2.22	0.42
1:A:126:LYS:HZ2	7:A:1022:ACY:H1	1.84	0.42
1:A:284:ILE:HG21	1:A:287:LEU:HD13	2.04	0.40
1:A:334:ILE:CD1	1:A:357:LYS:HD3	2.52	0.40

There are no symmetry-related clashes.

5.3 Torsion angles [i](#)

5.3.1 Protein backbone [i](#)

In the following table, the Percentiles column shows the percent Ramachandran outliers of the chain as a percentile score with respect to all X-ray entries followed by that with respect to entries of similar resolution.

The Analysed column shows the number of residues for which the backbone conformation was analysed, and the total number of residues.

Mol	Chain	Analysed	Favoured	Allowed	Outliers	Percentiles	
1	A	384/394 (98%)	379 (99%)	4 (1%)	1 (0%)	44	24
2	B	90/92 (98%)	90 (100%)	0	0	100	100
All	All	474/486 (98%)	469 (99%)	4 (1%)	1 (0%)	51	31

All (1) Ramachandran outliers are listed below:

Mol	Chain	Res	Type
1	A	388	VAL

5.3.2 Protein sidechains [i](#)

In the following table, the Percentiles column shows the percent sidechain outliers of the chain as a percentile score with respect to all X-ray entries followed by that with respect to entries of similar resolution.

The Analysed column shows the number of residues for which the sidechain conformation was analysed, and the total number of residues.

Mol	Chain	Analysed	Rotameric	Outliers	Percentiles	
1	A	320/328 (98%)	314 (98%)	6 (2%)	62	41
2	B	81/81 (100%)	79 (98%)	2 (2%)	53	28
All	All	401/409 (98%)	393 (98%)	8 (2%)	60	38

All (8) residues with a non-rotameric sidechain are listed below:

Mol	Chain	Res	Type
1	A	58	GLN
1	A	79	ASP
1	A	93	MET
1	A	228	LEU
1	A	279	GLN

Continued on next page...

Continued from previous page...

Mol	Chain	Res	Type
1	A	359	LEU
2	B	829	ASN
2	B	877	LYS

Some sidechains can be flipped to improve hydrogen bonding and reduce clashes. All (14) such sidechains are listed below:

Mol	Chain	Res	Type
1	A	22	GLN
1	A	58	GLN
1	A	154	GLN
1	A	168	ASN
1	A	227	HIS
1	A	279	GLN
1	A	306	ASN
1	A	387	ASN
2	B	829	ASN
2	B	861	GLN
2	B	874	HIS
2	B	885	GLN
2	B	895	ASN
2	B	904	GLN

5.3.3 RNA [i](#)

There are no RNA molecules in this entry.

5.4 Non-standard residues in protein, DNA, RNA chains [i](#)

There are no non-standard protein/DNA/RNA residues in this entry.

5.5 Carbohydrates [i](#)

There are no carbohydrates in this entry.

5.6 Ligand geometry [i](#)

Of 8 ligands modelled in this entry, 3 are monoatomic - leaving 5 for Mogul analysis.

In the following table, the Counts columns list the number of bonds (or angles) for which Mogul statistics could be retrieved, the number of bonds (or angles) that are observed in the model and the number of bonds (or angles) that are defined in the Chemical Component Dictionary. The Link column lists molecule types, if any, to which the group is linked. The Z score for a bond length (or angle) is the number of standard deviations the observed value is removed from the expected value. A bond length (or angle) with $|Z| > 2$ is considered an outlier worth inspection. RMSZ is the root-mean-square of all Z scores of the bond lengths (or angles).

Mol	Type	Chain	Res	Link	Bond lengths			Bond angles		
					Counts	RMSZ	$\# Z > 2$	Counts	RMSZ	$\# Z > 2$
7	ACY	A	1022	-	1,3,3	0.17	0	0,3,3	0.00	-
8	GOL	A	3147	-	5,5,5	0.29	0	5,5,5	0.40	0
8	GOL	A	3148	-	5,5,5	0.33	0	5,5,5	0.65	0
6	ADP	A	487	5,4	25,29,29	1.12	1 (4%)	24,45,45	1.73	3 (12%)
3	PO4	A	488	5,4	4,4,4	0.95	0	6,6,6	0.87	0

In the following table, the Chirals column lists the number of chiral outliers, the number of chiral centers analysed, the number of these observed in the model and the number defined in the Chemical Component Dictionary. Similar counts are reported in the Torsion and Rings columns. '-' means no outliers of that kind were identified.

Mol	Type	Chain	Res	Link	Chirals	Torsions	Rings
7	ACY	A	1022	-	-	0/0/0/0	0/0/0/0
8	GOL	A	3147	-	-	0/4/4/4	0/0/0/0
8	GOL	A	3148	-	-	0/4/4/4	0/0/0/0
6	ADP	A	487	5,4	-	0/12/32/32	0/3/3/3
3	PO4	A	488	5,4	-	0/0/0/0	0/0/0/0

All (1) bond length outliers are listed below:

Mol	Chain	Res	Type	Atoms	Z	Observed(Å)	Ideal(Å)
6	A	487	ADP	C5-C4	3.16	1.47	1.40

All (3) bond angle outliers are listed below:

Mol	Chain	Res	Type	Atoms	Z	Observed(°)	Ideal(°)
6	A	487	ADP	N3-C2-N1	-6.61	123.11	128.86
6	A	487	ADP	C4-C5-N7	-2.86	106.64	109.41
6	A	487	ADP	O2A-PA-O1A	2.05	122.87	112.28

There are no chirality outliers.

There are no torsion outliers.

There are no ring outliers.

1 monomer is involved in 5 short contacts:

Mol	Chain	Res	Type	Clashes	Symm-Clashes
7	A	1022	ACY	5	0

5.7 Other polymers [i](#)

There are no such residues in this entry.

5.8 Polymer linkage issues [i](#)

There are no chain breaks in this entry.

6 Fit of model and data

6.1 Protein, DNA and RNA chains

In the following table, the column labelled ‘#RSRZ> 2’ contains the number (and percentage) of RSRZ outliers, followed by percent RSRZ outliers for the chain as percentile scores relative to all X-ray entries and entries of similar resolution. The OWAB column contains the minimum, median, 95th percentile and maximum values of the occupancy-weighted average B-factor per residue. The column labelled ‘Q< 0.9’ lists the number of (and percentage) of residues with an average occupancy less than 0.9.

Mol	Chain	Analysed	<RSRZ>	#RSRZ>2	OWAB(Å ²)	Q<0.9
1	A	386/394 (97%)	1.20	86 (22%) 1 1	15, 27, 33, 70	0
2	B	92/92 (100%)	0.54	5 (5%) 26 33	19, 26, 35, 44	0
All	All	478/486 (98%)	1.07	91 (19%) 1 2	15, 27, 33, 70	0

All (91) RSRZ outliers are listed below:

Mol	Chain	Res	Type	RSRZ
1	A	388	VAL	16.6
1	A	389	GLN	10.6
1	A	294	TYR	6.1
1	A	386	GLU	5.8
1	A	288	TYR	4.3
1	A	387	ASN	4.3
1	A	146	VAL	4.1
1	A	109	GLY	4.1
1	A	17	CYS	4.1
1	A	11	LEU	3.9
1	A	9	ILE	3.8
2	B	817	LEU	3.8
1	A	150	PHE	3.8
1	A	172	ILE	3.7
1	A	253	ILE	3.3
1	A	145	THR	3.3
1	A	18	VAL	3.3
1	A	124	LEU	3.3
2	B	847	LYS	3.3
1	A	107	TYR	3.2
1	A	290	GLY	3.2
1	A	252	ASP	3.1
1	A	242	ILE	3.1
1	A	37	THR	3.0

Continued on next page...

Continued from previous page...

Mol	Chain	Res	Type	RSRZ
1	A	111	THR	3.0
1	A	149	TYR	3.0
1	A	255	GLU	3.0
1	A	110	GLU	3.0
1	A	144	VAL	2.9
1	A	258	ARG	2.9
1	A	16	SER	2.9
1	A	12	GLY	2.9
1	A	142	ALA	2.9
1	A	7	VAL	2.8
1	A	337	VAL	2.8
1	A	257	LYS	2.8
1	A	143	VAL	2.7
1	A	38	THR	2.7
1	A	40	SER	2.7
1	A	201	GLY	2.7
1	A	13	THR	2.7
1	A	190	GLY	2.7
1	A	34	GLY	2.6
1	A	79	ASP	2.6
1	A	171	CYS	2.6
1	A	247	ARG	2.5
1	A	286	SER	2.5
1	A	285	ASP	2.5
1	A	338	GLY	2.5
1	A	202	GLY	2.5
1	A	157	ALA	2.4
1	A	123	VAL	2.4
1	A	293	PHE	2.4
1	A	168	ASN	2.4
1	A	93	MET	2.4
1	A	243	ALA	2.4
1	A	287	LEU	2.4
1	A	28	ILE	2.3
1	A	173	ILE	2.3
1	A	29	ILE	2.3
1	A	158	THR	2.3
1	A	147	PRO	2.3
1	A	148	ALA	2.3
1	A	289	GLU	2.3
1	A	353	PHE	2.3
1	A	127	MET	2.3

Continued on next page...

Continued from previous page...

Mol	Chain	Res	Type	RSRZ
1	A	169	VAL	2.2
1	A	281	SER	2.2
1	A	30	ALA	2.2
1	A	358	GLU	2.2
1	A	356	GLY	2.2
1	A	382	GLY	2.2
1	A	250	LYS	2.2
1	A	332	HIS	2.2
1	A	130	ILE	2.2
1	A	89	HIS	2.1
1	A	355	ASN	2.1
2	B	904	GLN	2.1
1	A	329	SER	2.1
1	A	240	HIS	2.1
1	A	249	HIS	2.1
1	A	261	ARG	2.1
1	A	46	ASP	2.1
2	B	814	PRO	2.1
1	A	327	ASP	2.1
1	A	245	PHE	2.1
1	A	167	LEU	2.1
1	A	191	ALA	2.0
1	A	251	LYS	2.0
1	A	14	THR	2.0
2	B	903	ASN	2.0

6.2 Non-standard residues in protein, DNA, RNA chains ⓘ

There are no non-standard protein/DNA/RNA residues in this entry.

6.3 Carbohydrates ⓘ

There are no carbohydrates in this entry.

6.4 Ligands ⓘ

In the following table, the Atoms column lists the number of modelled atoms in the group and the number defined in the chemical component dictionary. LLDF column lists the quality of electron density of the group with respect to its neighbouring residues in protein, DNA or RNA chains. The B-factors column lists the minimum, median, 95th percentile and maximum values of B factors

of atoms in the group. The column labelled 'Q< 0.9' lists the number of atoms with occupancy less than 0.9.

Mol	Type	Chain	Res	Atoms	RSCC	RSR	LLDF	B-factors(\AA^2)	Q<0.9
6	ADP	A	487	27/27	0.95	0.17	0.18	24,27,28,28	0
8	GOL	A	3147	6/6	0.90	0.14	0.10	24,34,36,36	0
8	GOL	A	3148	6/6	0.90	0.14	-1.01	21,22,24,25	0
7	ACY	A	1022	4/4	0.85	0.13	-1.15	21,22,22,24	0
4	NA	A	490	1/1	0.99	0.11	-2.12	26,26,26,26	0
3	PO4	A	488	5/5	0.98	0.14	-2.35	15,17,17,18	0
5	MG	A	491	1/1	0.98	0.14	-	17,17,17,17	0
4	NA	A	489	1/1	0.94	0.13	-	23,23,23,23	0

6.5 Other polymers [i](#)

There are no such residues in this entry.