



Full wwPDB X-ray Structure Validation Report ⓘ

Oct 15, 2017 – 12:26 PM EDT

PDB ID : 2R2G
Title : Structure of Eugenol Synthase from Ocimum basilicum complexed with EMDF
Authors : Louie, G.V.; Noel, J.P.; Bowman, M.E.
Deposited on : unknown
Resolution : 1.80 Å(reported)

This is a Full wwPDB X-ray Structure Validation Report for a publicly released PDB entry.

We welcome your comments at validation@mail.wwpdb.org

A user guide is available at

<http://wwpdb.org/validation/2016/XrayValidationReportHelp>

with specific help available everywhere you see the ⓘ symbol.

The following versions of software and data (see [references ⓘ](#)) were used in the production of this report:

MolProbity : 4.02b-467
Mogul : 1.7.2 (RC1), CSD as538be (2017)
Xtriage (Phenix) : 1.9-1692
EDS : rb-20030345
Percentile statistics : 20161228.v01 (using entries in the PDB archive December 28th 2016)
Refmac : 5.8.0135
CCP4 : 6.5.0
Ideal geometry (proteins) : Engh & Huber (2001)
Ideal geometry (DNA, RNA) : Parkinson et al. (1996)
Validation Pipeline (wwPDB-VP) : rb-20030345

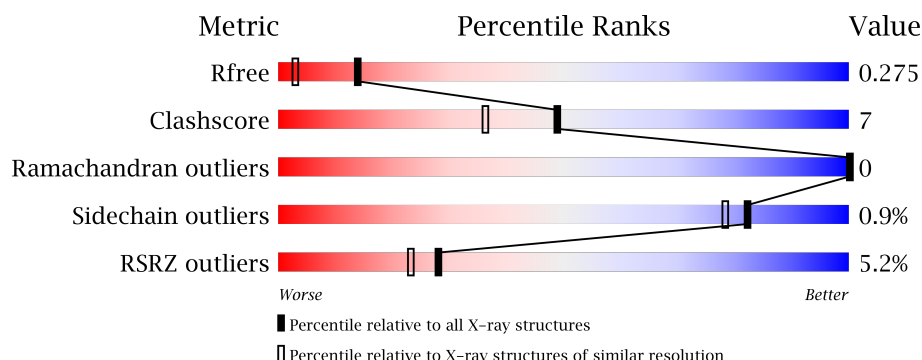
1 Overall quality at a glance

The following experimental techniques were used to determine the structure:

X-RAY DIFFRACTION

The reported resolution of this entry is 1.80 Å.

Percentile scores (ranging between 0-100) for global validation metrics of the entry are shown in the following graphic. The table shows the number of entries on which the scores are based.



Metric	Whole archive (#Entries)	Similar resolution (#Entries, resolution range(Å))
R_{free}	100719	4827 (1.80-1.80)
Clashscore	112137	5742 (1.80-1.80)
Ramachandran outliers	110173	5676 (1.80-1.80)
Sidechain outliers	110143	5675 (1.80-1.80)
RSRZ outliers	101464	4906 (1.80-1.80)

The table below summarises the geometric issues observed across the polymeric chains and their fit to the electron density. The red, orange, yellow and green segments on the lower bar indicate the fraction of residues that contain outliers for ≥ 3 , 2, 1 and 0 types of geometric quality criteria. A grey segment represents the fraction of residues that are not modelled. The numeric value for each fraction is indicated below the corresponding segment, with a dot representing fractions $\leq 5\%$. The upper red bar (where present) indicates the fraction of residues that have poor fit to the electron density. The numeric value is given above the bar.

Mol	Chain	Length	Quality of chain
1	A	318	 5% 80% 17% •
1	B	318	 5% 82% 15% ••

2 Entry composition

There are 4 unique types of molecules in this entry. The entry contains 5434 atoms, of which 0 are hydrogens and 0 are deuteriums.

In the tables below, the ZeroOcc column contains the number of atoms modelled with zero occupancy, the AltConf column contains the number of residues with at least one atom in alternate conformation and the Trace column contains the number of residues modelled with at most 2 atoms.

- Molecule 1 is a protein called Eugenol synthase 1.

Mol	Chain	Residues	Atoms					ZeroOcc	AltConf	Trace
1	A	310	Total	C	N	O	S	0	0	0
			2477	1610	401	458	8			
1	B	310	Total	C	N	O	S	0	0	0
			2477	1610	401	458	8			

There are 10 discrepancies between the modelled and reference sequences:

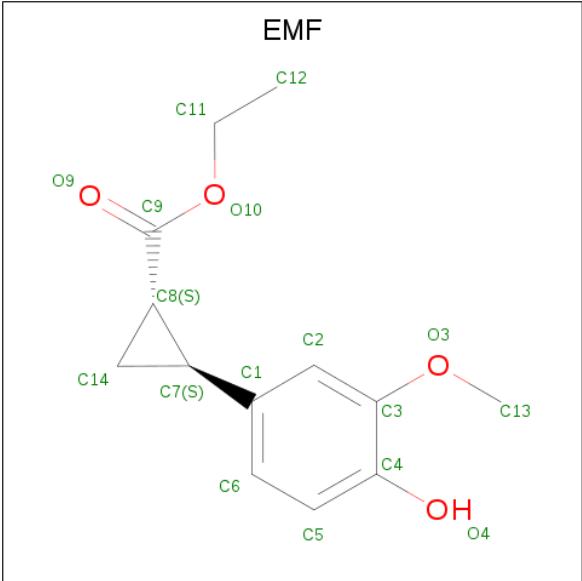
Chain	Residue	Modelled	Actual	Comment	Reference
A	-3	SER	-	EXPRESSION TAG	UNP Q15GI4
A	-2	GLY	-	EXPRESSION TAG	UNP Q15GI4
A	-1	HIS	-	EXPRESSION TAG	UNP Q15GI4
A	0	GLY	-	EXPRESSION TAG	UNP Q15GI4
A	132	GLN	LYS	ENGINEERED	UNP Q15GI4
B	-3	SER	-	EXPRESSION TAG	UNP Q15GI4
B	-2	GLY	-	EXPRESSION TAG	UNP Q15GI4
B	-1	HIS	-	EXPRESSION TAG	UNP Q15GI4
B	0	GLY	-	EXPRESSION TAG	UNP Q15GI4
B	132	GLN	LYS	ENGINEERED	UNP Q15GI4

- Molecule 2 is NADP NICOTINAMIDE-ADENINE-DINUCLEOTIDE PHOSPHATE (three-letter code: NAP) (formula: C₂₁H₂₈N₇O₁₇P₃).



Mol	Chain	Residues	Atoms					ZeroOcc	AltConf
2	A	1	Total	C	N	O	P	0	0
			48	21	7	17	3		
2	B	1	Total	C	N	O	P	0	0
			48	21	7	17	3		

- Molecule 3 is ethyl (1S,2S)-2-(4-hydroxy-3-methoxyphenyl)cyclopropanecarboxylate (three-letter code: EMF) (formula: C₁₃H₁₆O₄).



Mol	Chain	Residues	Atoms			ZeroOcc	AltConf
3	A	1	Total	C	O	0	0
			17	13	4		

Continued on next page...

Continued from previous page...

Mol	Chain	Residues	Atoms			ZeroOcc	AltConf
3	B	1	Total	C	O	0	0
			17	13	4		

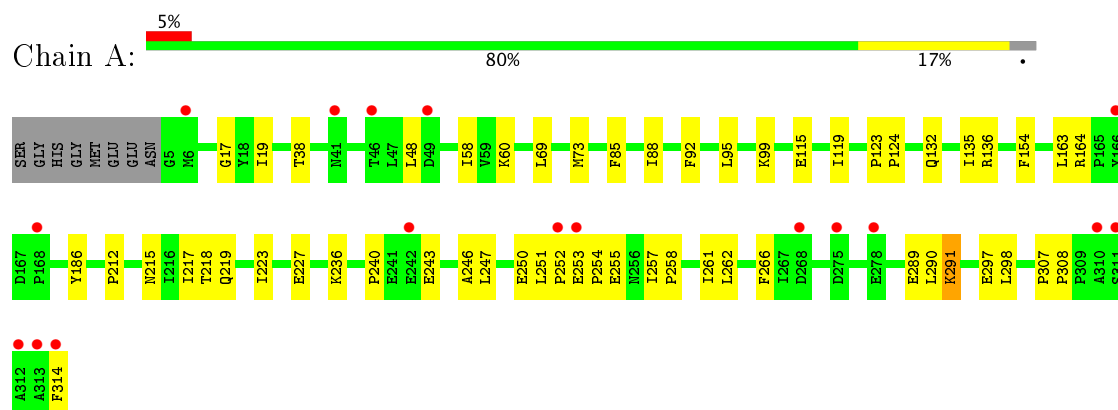
- Molecule 4 is water.

Mol	Chain	Residues	Atoms		ZeroOcc	AltConf
4	A	178	Total	O	0	0
			178	178		
4	B	172	Total	O	0	0
			172	172		

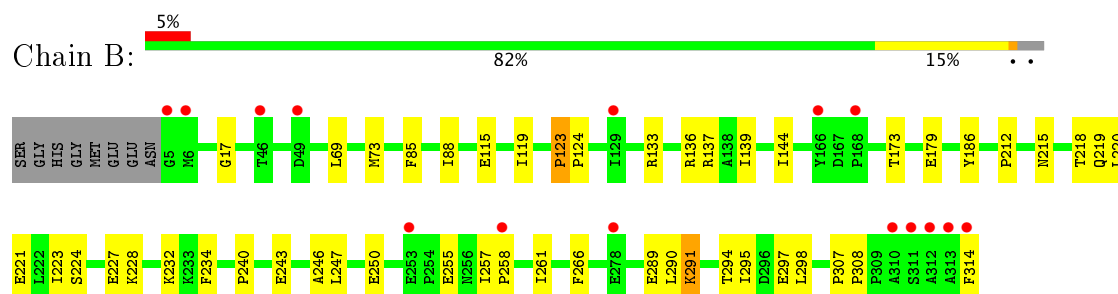
3 Residue-property plots [i](#)

These plots are drawn for all protein, RNA and DNA chains in the entry. The first graphic for a chain summarises the proportions of the various outlier classes displayed in the second graphic. The second graphic shows the sequence view annotated by issues in geometry and electron density. Residues are color-coded according to the number of geometric quality criteria for which they contain at least one outlier: green = 0, yellow = 1, orange = 2 and red = 3 or more. A red dot above a residue indicates a poor fit to the electron density ($RSRZ > 2$). Stretches of 2 or more consecutive residues without any outlier are shown as a green connector. Residues present in the sample, but not in the model, are shown in grey.

• Molecule 1: Eugenol synthase 1



• Molecule 1: Eugenol synthase 1



4 Data and refinement statistics

Property	Value	Source
Space group	P 1 21 1	Depositor
Cell constants a, b, c, α , β , γ	53.76Å 86.20Å 76.93Å 90.00° 107.40° 90.00°	Depositor
Resolution (Å)	44.09 – 1.80 44.09 – 1.70	Depositor EDS
% Data completeness (in resolution range)	92.6 (44.09-1.80) 90.8 (44.09-1.70)	Depositor EDS
R_{merge}	0.11	Depositor
R_{sym}	0.11	Depositor
$\langle I/\sigma(I) \rangle$ ¹	0.59 (at 1.70Å)	Xtriage
Refinement program	CNS 1.1	Depositor
R, R_{free}	0.248 , 0.280 0.245 , 0.275	Depositor DCC
R_{free} test set	2919 reflections (5.35%)	DCC
Wilson B-factor (Å ²)	17.7	Xtriage
Anisotropy	0.441	Xtriage
Bulk solvent k_{sol} (e/Å ³), B_{sol} (Å ²)	0.36 , 52.5	EDS
L-test for twinning ²	$\langle L \rangle = 0.50$, $\langle L^2 \rangle = 0.33$	Xtriage
Estimated twinning fraction	No twinning to report.	Xtriage
F_o, F_c correlation	0.93	EDS
Total number of atoms	5434	wwPDB-VP
Average B, all atoms (Å ²)	22.0	wwPDB-VP

Xtriage's analysis on translational NCS is as follows: *The analyses of the Patterson function reveals a significant off-origin peak that is 24.33 % of the origin peak, indicating pseudo translational symmetry. The chance of finding a peak of this or larger height randomly in a structure without pseudo translational symmetry is equal to 3.9133e-03. The detected translational NCS is most likely also responsible for the elevated intensity ratio.*

¹ Intensities estimated from amplitudes.

² Theoretical values of $\langle |L| \rangle$, $\langle L^2 \rangle$ for acentric reflections are 0.5, 0.333 respectively for untwinned datasets, and 0.375, 0.2 for perfectly twinned datasets.

5 Model quality

5.1 Standard geometry

Bond lengths and bond angles in the following residue types are not validated in this section: NAP, EMF

The Z score for a bond length (or angle) is the number of standard deviations the observed value is removed from the expected value. A bond length (or angle) with $|Z| > 5$ is considered an outlier worth inspection. RMSZ is the root-mean-square of all Z scores of the bond lengths (or angles).

Mol	Chain	Bond lengths		Bond angles	
		RMSZ	# Z >5	RMSZ	# Z >5
1	A	0.33	0/2534	0.59	0/3435
1	B	0.34	0/2534	0.59	0/3435
All	All	0.33	0/5068	0.59	0/6870

There are no bond length outliers.

There are no bond angle outliers.

There are no chirality outliers.

There are no planarity outliers.

5.2 Too-close contacts

In the following table, the Non-H and H(model) columns list the number of non-hydrogen atoms and hydrogen atoms in the chain respectively. The H(added) column lists the number of hydrogen atoms added and optimized by MolProbity. The Clashes column lists the number of clashes within the asymmetric unit, whereas Symm-Clashes lists symmetry related clashes.

Mol	Chain	Non-H	H(model)	H(added)	Clashes	Symm-Clashes
1	A	2477	0	2519	38	0
1	B	2477	0	2519	34	0
2	A	48	0	25	1	0
2	B	48	0	25	1	0
3	A	17	0	16	3	0
3	B	17	0	15	2	0
4	A	178	0	0	1	0
4	B	172	0	0	1	0
All	All	5434	0	5119	69	0

The all-atom clashscore is defined as the number of clashes found per 1000 atoms (including hydrogen atoms). The all-atom clashscore for this structure is 7.

All (69) close contacts within the same asymmetric unit are listed below, sorted by their clash magnitude.

Atom-1	Atom-2	Interatomic distance (Å)	Clash overlap (Å)
1:B:224:SER:O	1:B:228:LYS:HD3	1.73	0.89
1:B:85:PHE:HD2	1:B:88:ILE:HD11	1.51	0.73
1:A:85:PHE:CD2	1:A:88:ILE:HD11	2.27	0.70
1:A:85:PHE:HD2	1:A:88:ILE:HD11	1.57	0.70
1:A:246:ALA:O	1:A:250:GLU:HG2	1.93	0.69
1:B:246:ALA:O	1:B:250:GLU:HG2	1.96	0.66
1:B:85:PHE:CD2	1:B:88:ILE:HD11	2.32	0.65
1:A:17:GLY:HA3	2:A:401:NAP:H52A	1.80	0.63
1:A:262:LEU:HG	3:A:601:EMF:H121	1.81	0.63
1:B:179:GLU:OE2	1:B:220:LEU:HD12	2.03	0.58
1:B:123:PRO:HB2	1:B:124:PRO:HD3	1.85	0.58
1:A:291:LYS:NZ	1:A:297:GLU:OE1	2.36	0.58
1:A:261:ILE:HD13	3:A:601:EMF:H8	1.84	0.58
1:B:232:LYS:HE3	1:B:234:PHE:CE1	2.39	0.58
1:B:17:GLY:HA3	2:B:401:NAP:H52A	1.86	0.57
1:A:123:PRO:HB2	1:A:124:PRO:HD3	1.89	0.54
1:A:223:ILE:O	1:A:227:GLU:HG3	2.08	0.54
1:B:261:ILE:HD13	3:B:602:EMF:H8	1.90	0.54
1:B:218:THR:OG1	1:B:221:GLU:HG3	2.08	0.54
1:A:136:ARG:NH2	4:A:1446:HOH:O	2.41	0.53
1:B:289:GLU:HG2	1:B:290:LEU:HG	1.91	0.52
1:B:212:PRO:HG2	1:B:215:ASN:HB2	1.93	0.51
1:A:253:GLU:HG2	1:A:254:PRO:HA	1.93	0.51
1:A:219:GLN:NE2	1:A:266:PHE:HB3	2.25	0.51
1:B:186:TYR:HB2	1:B:298:LEU:HD21	1.92	0.51
1:B:295:ILE:HA	1:B:298:LEU:HD12	1.91	0.51
1:A:223:ILE:HG21	1:A:236:LYS:HE2	1.92	0.50
1:A:212:PRO:HG2	1:A:215:ASN:HB2	1.92	0.50
1:A:186:TYR:HB2	1:A:298:LEU:HD21	1.94	0.50
1:B:255:GLU:O	1:B:258:PRO:HD2	2.11	0.50
1:B:257:ILE:HB	1:B:258:PRO:HD3	1.94	0.50
1:B:294:THR:OG1	1:B:297:GLU:HG3	2.12	0.50
1:B:258:PRO:HG3	1:B:314:PHE:CE2	2.47	0.49
1:A:38:THR:O	1:A:60:LYS:HA	2.11	0.49
1:B:219:GLN:NE2	1:B:266:PHE:HB3	2.27	0.49
1:B:69:LEU:O	1:B:73:MET:HG2	2.13	0.49
1:A:257:ILE:HB	1:A:258:PRO:HD3	1.94	0.49
1:B:85:PHE:O	1:B:88:ILE:HG13	2.14	0.48
1:A:69:LEU:O	1:A:73:MET:HG2	2.14	0.48
1:A:253:GLU:HG2	1:A:254:PRO:CA	2.45	0.47

Continued on next page...

Continued from previous page...

Atom-1	Atom-2	Interatomic distance (Å)	Clash overlap (Å)
1:A:289:GLU:HG2	1:A:290:LEU:HG	1.95	0.47
1:A:255:GLU:O	1:A:258:PRO:HD2	2.15	0.47
1:A:252:PRO:HG3	1:B:173:THR:OG1	2.16	0.46
1:B:136:ARG:NH2	4:B:1305:HOH:O	2.49	0.46
1:A:261:ILE:CD1	3:A:601:EMF:H8	2.45	0.46
1:A:88:ILE:HD13	1:A:132:GLN:HG3	1.98	0.46
1:A:48:LEU:HD22	1:A:58:ILE:HD12	1.98	0.45
1:A:92:PHE:CE1	1:A:135:ILE:HD13	2.51	0.45
1:B:223:ILE:O	1:B:227:GLU:HG3	2.15	0.45
1:B:228:LYS:CD	1:B:228:LYS:N	2.79	0.45
1:B:240:PRO:O	1:B:243:GLU:HB3	2.15	0.45
1:B:119:ILE:C	1:B:119:ILE:HD12	2.38	0.44
1:A:307:PRO:HA	1:A:308:PRO:HD3	1.89	0.44
1:A:253:GLU:CG	1:A:254:PRO:HA	2.49	0.43
1:A:19:ILE:HB	1:A:154:PHE:CE2	2.54	0.43
1:A:119:ILE:C	1:A:119:ILE:HD12	2.39	0.42
1:A:247:LEU:HD11	1:B:247:LEU:HD21	2.00	0.42
1:B:139:ILE:HG23	1:B:144:ILE:HB	2.00	0.42
1:A:258:PRO:HG3	1:A:314:PHE:CE2	2.54	0.42
1:A:95:LEU:HG	1:A:99:LYS:HE3	2.01	0.42
1:B:133:ARG:O	1:B:137:ARG:HG2	2.20	0.41
1:B:291:LYS:NZ	1:B:297:GLU:OE1	2.53	0.41
1:A:217:ILE:HG12	1:A:218:THR:N	2.36	0.41
1:A:252:PRO:HG3	1:B:173:THR:CB	2.50	0.41
1:B:307:PRO:HA	1:B:308:PRO:HD3	1.94	0.41
1:B:261:ILE:CD1	3:B:602:EMF:H8	2.51	0.41
1:A:240:PRO:O	1:A:243:GLU:HB3	2.21	0.41
1:A:251:LEU:HA	1:A:252:PRO:HD3	1.94	0.40
1:A:163:LEU:O	1:A:164:ARG:C	2.59	0.40

There are no symmetry-related clashes.

5.3 Torsion angles ⓘ

5.3.1 Protein backbone ⓘ

In the following table, the Percentiles column shows the percent Ramachandran outliers of the chain as a percentile score with respect to all X-ray entries followed by that with respect to entries of similar resolution.

The Analysed column shows the number of residues for which the backbone conformation was analysed, and the total number of residues.

Mol	Chain	Analysed	Favoured	Allowed	Outliers	Percentiles	
1	A	308/318 (97%)	301 (98%)	7 (2%)	0	100	100
1	B	308/318 (97%)	301 (98%)	7 (2%)	0	100	100
All	All	616/636 (97%)	602 (98%)	14 (2%)	0	100	100

There are no Ramachandran outliers to report.

5.3.2 Protein sidechains ⓘ

In the following table, the Percentiles column shows the percent sidechain outliers of the chain as a percentile score with respect to all X-ray entries followed by that with respect to entries of similar resolution.

The Analysed column shows the number of residues for which the sidechain conformation was analysed, and the total number of residues.

Mol	Chain	Analysed	Rotameric	Outliers	Percentiles	
1	A	272/278 (98%)	270 (99%)	2 (1%)	87	84
1	B	272/278 (98%)	269 (99%)	3 (1%)	78	72
All	All	544/556 (98%)	539 (99%)	5 (1%)	82	78

All (5) residues with a non-rotameric sidechain are listed below:

Mol	Chain	Res	Type
1	A	115	GLU
1	A	291	LYS
1	B	115	GLU
1	B	123	PRO
1	B	291	LYS

Some sidechains can be flipped to improve hydrogen bonding and reduce clashes. All (3) such sidechains are listed below:

Mol	Chain	Res	Type
1	A	21	ASN
1	A	143	ASN
1	B	143	ASN

5.3.3 RNA ⓘ

There are no RNA molecules in this entry.

5.4 Non-standard residues in protein, DNA, RNA chains ⓘ

There are no non-standard protein/DNA/RNA residues in this entry.

5.5 Carbohydrates ⓘ

There are no carbohydrates in this entry.

5.6 Ligand geometry ⓘ

4 ligands are modelled in this entry.

In the following table, the Counts columns list the number of bonds (or angles) for which Mogul statistics could be retrieved, the number of bonds (or angles) that are observed in the model and the number of bonds (or angles) that are defined in the Chemical Component Dictionary. The Link column lists molecule types, if any, to which the group is linked. The Z score for a bond length (or angle) is the number of standard deviations the observed value is removed from the expected value. A bond length (or angle) with $|Z| > 2$ is considered an outlier worth inspection. RMSZ is the root-mean-square of all Z scores of the bond lengths (or angles).

Mol	Type	Chain	Res	Link	Bond lengths			Bond angles		
					Counts	RMSZ	# $ Z > 2$	Counts	RMSZ	# $ Z > 2$
2	NAP	A	401	-	44,52,52	1.22	5 (11%)	51,80,80	1.36	8 (15%)
3	EMF	A	601	-	18,18,18	2.59	6 (33%)	24,25,25	2.37	6 (25%)
2	NAP	B	401	-	44,52,52	1.21	5 (11%)	51,80,80	1.33	7 (13%)
3	EMF	B	602	-	18,18,18	2.62	5 (27%)	24,25,25	2.36	7 (29%)

In the following table, the Chirals column lists the number of chiral outliers, the number of chiral centers analysed, the number of these observed in the model and the number defined in the Chemical Component Dictionary. Similar counts are reported in the Torsion and Rings columns. '-' means no outliers of that kind were identified.

Mol	Type	Chain	Res	Link	Chirals	Torsions	Rings
2	NAP	A	401	-	-	0/27/67/67	0/5/5/5
3	EMF	A	601	-	-	0/13/18/18	0/1/2/2
2	NAP	B	401	-	-	0/27/67/67	0/5/5/5
3	EMF	B	602	-	-	0/13/18/18	0/1/2/2

All (21) bond length outliers are listed below:

Mol	Chain	Res	Type	Atoms	Z	Observed(Å)	Ideal(Å)
3	A	601	EMF	C14-C7	2.09	1.53	1.50
3	B	602	EMF	C2-C3	2.27	1.43	1.38

Continued on next page...

Continued from previous page...

Mol	Chain	Res	Type	Atoms	Z	Observed(Å)	Ideal(Å)
2	A	401	NAP	C6N-N1N	2.29	1.41	1.35
3	B	602	EMF	C2-C1	2.32	1.42	1.39
2	B	401	NAP	C6N-N1N	2.33	1.41	1.35
3	A	601	EMF	C2-C3	2.35	1.43	1.38
2	A	401	NAP	O4D-C1D	2.37	1.44	1.41
3	A	601	EMF	C2-C1	2.40	1.42	1.39
2	B	401	NAP	O4D-C1D	2.47	1.44	1.41
2	B	401	NAP	C2A-N3A	2.57	1.36	1.32
2	A	401	NAP	C2A-N3A	2.73	1.36	1.32
2	A	401	NAP	O4B-C4B	3.08	1.52	1.45
2	B	401	NAP	C4N-C3N	3.09	1.44	1.39
2	A	401	NAP	C4N-C3N	3.13	1.44	1.39
3	B	602	EMF	C6-C1	3.17	1.44	1.39
3	A	601	EMF	C6-C1	3.19	1.44	1.39
2	B	401	NAP	O4B-C4B	3.23	1.52	1.45
3	A	601	EMF	O10-C9	6.29	1.46	1.33
3	B	602	EMF	O10-C9	6.33	1.46	1.33
3	A	601	EMF	C4-C3	6.86	1.50	1.40
3	B	602	EMF	C4-C3	7.16	1.51	1.40

All (28) bond angle outliers are listed below:

Mol	Chain	Res	Type	Atoms	Z	Observed(°)	Ideal(°)
3	A	601	EMF	C1-C7-C8	-5.07	110.75	120.60
2	A	401	NAP	O4B-C4B-C3B	-4.87	95.48	105.17
2	B	401	NAP	O4B-C4B-C3B	-4.79	95.65	105.17
3	B	602	EMF	C1-C7-C8	-4.73	111.41	120.60
2	A	401	NAP	C4D-O4D-C1D	-3.13	106.44	109.77
2	B	401	NAP	C4D-O4D-C1D	-3.06	106.51	109.77
2	A	401	NAP	N3A-C2A-N1A	-2.86	126.36	128.86
3	B	602	EMF	C14-C7-C1	-2.83	117.12	122.31
2	B	401	NAP	N3A-C2A-N1A	-2.77	126.45	128.86
3	A	601	EMF	O10-C9-O9	-2.71	118.84	124.11
3	A	601	EMF	C14-C7-C1	-2.71	117.34	122.31
3	B	602	EMF	O10-C9-O9	-2.71	118.84	124.11
2	A	401	NAP	O4D-C4D-C3D	2.02	109.18	105.17
3	B	602	EMF	C11-O10-C9	2.03	121.49	116.64
2	A	401	NAP	C2B-C3B-C4B	2.07	106.65	101.95
2	B	401	NAP	C2B-C3B-C4B	2.08	106.68	101.95
2	B	401	NAP	C4B-O4B-C1B	2.25	112.17	109.77
2	A	401	NAP	C4A-C5A-N7A	2.47	111.80	109.41
2	B	401	NAP	O4B-C4B-C5B	2.47	117.75	109.40

Continued on next page...

Continued from previous page...

Mol	Chain	Res	Type	Atoms	Z	Observed(°)	Ideal(°)
2	B	401	NAP	C4A-C5A-N7A	2.47	111.80	109.41
2	A	401	NAP	O4B-C4B-C5B	2.54	117.97	109.40
2	A	401	NAP	C4B-O4B-C1B	2.55	112.48	109.77
3	A	601	EMF	C13-O3-C3	2.71	121.44	117.54
3	B	602	EMF	C13-O3-C3	2.78	121.53	117.54
3	A	601	EMF	O3-C3-C4	4.07	119.51	114.55
3	B	602	EMF	O3-C3-C4	4.29	119.78	114.55
3	B	602	EMF	O10-C9-C8	7.26	120.63	111.34
3	A	601	EMF	O10-C9-C8	7.37	120.76	111.34

There are no chirality outliers.

There are no torsion outliers.

There are no ring outliers.

4 monomers are involved in 7 short contacts:

Mol	Chain	Res	Type	Clashes	Symm-Clashes
2	A	401	NAP	1	0
3	A	601	EMF	3	0
2	B	401	NAP	1	0
3	B	602	EMF	2	0

5.7 Other polymers [i](#)

There are no such residues in this entry.

5.8 Polymer linkage issues [i](#)

There are no chain breaks in this entry.

6 Fit of model and data ⓘ

6.1 Protein, DNA and RNA chains ⓘ

In the following table, the column labelled ‘#RSRZ> 2’ contains the number (and percentage) of RSRZ outliers, followed by percent RSRZ outliers for the chain as percentile scores relative to all X-ray entries and entries of similar resolution. The OWAB column contains the minimum, median, 95th percentile and maximum values of the occupancy-weighted average B-factor per residue. The column labelled ‘Q< 0.9’ lists the number of (and percentage) of residues with an average occupancy less than 0.9.

Mol	Chain	Analysed	<RSRZ>	#RSRZ>2	OWAB(Å ²)	Q<0.9
1	A	310/318 (97%)	0.46	17 (5%) 26 21	10, 20, 40, 56	0
1	B	310/318 (97%)	0.45	15 (4%) 31 26	8, 19, 38, 54	0
All	All	620/636 (97%)	0.46	32 (5%) 28 23	8, 20, 40, 56	0

All (32) RSRZ outliers are listed below:

Mol	Chain	Res	Type	RSRZ
1	A	314	PHE	6.4
1	B	314	PHE	5.7
1	B	5	GLY	4.7
1	B	310	ALA	4.3
1	B	6	MET	4.2
1	B	311	SER	4.2
1	A	310	ALA	4.2
1	A	312	ALA	4.1
1	A	311	SER	4.0
1	B	312	ALA	3.9
1	B	313	ALA	3.5
1	B	49	ASP	3.4
1	A	49	ASP	3.3
1	A	166	TYR	3.3
1	B	168	PRO	3.3
1	B	166	TYR	3.1
1	B	278	GLU	2.8
1	A	313	ALA	2.7
1	B	46	THR	2.7
1	A	168	PRO	2.7
1	B	253	GLU	2.7
1	A	278	GLU	2.6
1	A	268	ASP	2.6
1	A	6	MET	2.5

Continued on next page...

Continued from previous page...

Mol	Chain	Res	Type	RSRZ
1	A	252	PRO	2.5
1	B	258	PRO	2.5
1	A	275	ASP	2.5
1	A	242	GLU	2.4
1	B	129	ILE	2.3
1	A	46	THR	2.2
1	A	41	ASN	2.1
1	A	253	GLU	2.0

6.2 Non-standard residues in protein, DNA, RNA chains [i](#)

There are no non-standard protein/DNA/RNA residues in this entry.

6.3 Carbohydrates [i](#)

There are no carbohydrates in this entry.

6.4 Ligands [i](#)

In the following table, the Atoms column lists the number of modelled atoms in the group and the number defined in the chemical component dictionary. LLDF column lists the quality of electron density of the group with respect to its neighbouring residues in protein, DNA or RNA chains. The B-factors column lists the minimum, median, 95th percentile and maximum values of B factors of atoms in the group. The column labelled 'Q< 0.9' lists the number of atoms with occupancy less than 0.9.

Mol	Type	Chain	Res	Atoms	RSCC	RSR	LLDF	B-factors(Å ²)	Q<0.9
3	EMF	A	601	17/17	0.80	0.15	-0.28	21,25,29,33	0
2	NAP	A	401	48/48	0.91	0.12	-0.40	12,23,31,32	0
3	EMF	B	602	17/17	0.86	0.14	-0.41	24,26,34,35	0
2	NAP	B	401	48/48	0.91	0.11	-0.60	12,23,30,31	0

6.5 Other polymers [i](#)

There are no such residues in this entry.