



wwPDB X-ray Structure Validation Summary Report ⓘ

Feb 26, 2018 – 04:25 PM EST

PDB ID : 3R4S
Title : Cell entry of botulinum neurotoxin type C is dependent upon interaction with two ganglioside molecules
Authors : Strotmeier, J.; Gu, S.; Jutzi, S.; Mahrhold, S.; Zhou, J.; Pich, A.; Bigalke, H.; Rummel, A.; Jin, R.; Binz, T.
Deposited on : 2011-03-17
Resolution : 2.15 Å(reported)

This is a wwPDB X-ray Structure Validation Summary Report for a publicly released PDB entry.

We welcome your comments at validation@mail.wwpdb.org

A user guide is available at

<http://wwpdb.org/validation/2016/XrayValidationReportHelp>

with specific help available everywhere you see the ⓘ symbol.

The following versions of software and data (see [references ⓘ](#)) were used in the production of this report:

MolProbity : 4.02b-467
Mogul : 1.7.2 (RC1), CSD as538be (2017)
Xtriage (Phenix) : 1.9-1692
EDS : rb-20030736
Percentile statistics : 20161228.v01 (using entries in the PDB archive December 28th 2016)
Refmac : 5.8.0135
CCP4 : 6.5.0
Ideal geometry (proteins) : Engh & Huber (2001)
Ideal geometry (DNA, RNA) : Parkinson et al. (1996)
Validation Pipeline (wwPDB-VP) : rb-20030736

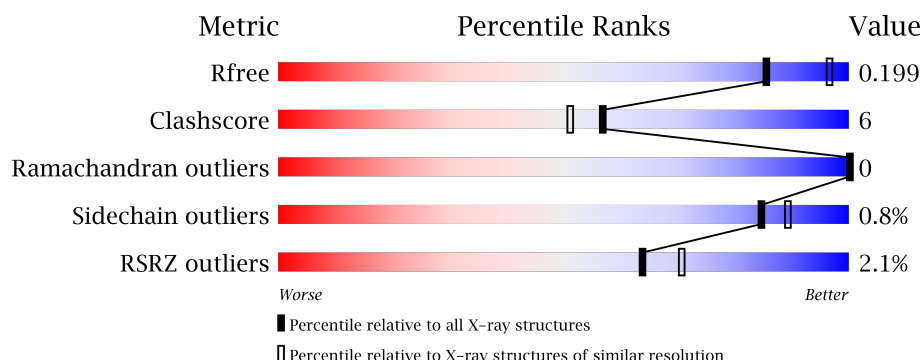
1 Overall quality at a glance

The following experimental techniques were used to determine the structure:

X-RAY DIFFRACTION

The reported resolution of this entry is 2.15 Å.

Percentile scores (ranging between 0-100) for global validation metrics of the entry are shown in the following graphic. The table shows the number of entries on which the scores are based.



Metric	Whole archive (#Entries)	Similar resolution (#Entries, resolution range(Å))
R_{free}	100719	1170 (2.16-2.16)
Clashscore	112137	1278 (2.16-2.16)
Ramachandran outliers	110173	1256 (2.16-2.16)
Sidechain outliers	110143	1255 (2.16-2.16)
RSRZ outliers	101464	1175 (2.16-2.16)

The table below summarises the geometric issues observed across the polymeric chains and their fit to the electron density. The red, orange, yellow and green segments on the lower bar indicate the fraction of residues that contain outliers for ≥ 3 , 2, 1 and 0 types of geometric quality criteria. A grey segment represents the fraction of residues that are not modelled. The numeric value for each fraction is indicated below the corresponding segment, with a dot representing fractions $\leq 5\%$. The upper red bar (where present) indicates the fraction of residues that have poor fit to the electron density. The numeric value is given above the bar.

Mol	Chain	Length	Quality of chain
1	A	443	<div> <div>2%</div> <div> <div></div> <div>89%</div> <div>7%</div> <div>•</div> </div> </div>
1	B	443	<div> <div>2%</div> <div> <div></div> <div>85%</div> <div>10%</div> <div>• •</div> </div> </div>

2 Entry composition

There are 4 unique types of molecules in this entry. The entry contains 7908 atoms, of which 0 are hydrogens and 0 are deuteriums.

In the tables below, the ZeroOcc column contains the number of atoms modelled with zero occupancy, the AltConf column contains the number of residues with at least one atom in alternate conformation and the Trace column contains the number of residues modelled with at most 2 atoms.

- Molecule 1 is a protein called Botulinum neurotoxin type C1.

Mol	Chain	Residues	Atoms					ZeroOcc	AltConf	Trace
1	A	424	Total	C	N	O	S	0	0	0
			3477	2212	582	670	13			
1	B	424	Total	C	N	O	S	0	0	0
			3477	2212	582	670	13			

There are 36 discrepancies between the modelled and reference sequences:

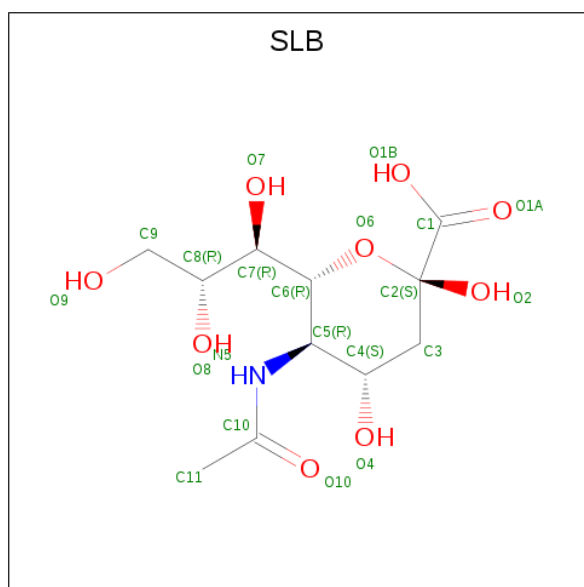
Chain	Residue	Modelled	Actual	Comment	Reference
A	861	MET	-	EXPRESSION TAG	UNP P18640
A	862	ARG	-	EXPRESSION TAG	UNP P18640
A	863	GLY	-	EXPRESSION TAG	UNP P18640
A	864	SER	-	EXPRESSION TAG	UNP P18640
A	865	MET	-	EXPRESSION TAG	UNP P18640
A	866	ALA	-	EXPRESSION TAG	UNP P18640
A	1292	PRO	-	EXPRESSION TAG	UNP P18640
A	1293	GLY	-	EXPRESSION TAG	UNP P18640
A	1294	SER	-	EXPRESSION TAG	UNP P18640
A	1295	ALA	-	EXPRESSION TAG	UNP P18640
A	1296	TRP	-	EXPRESSION TAG	UNP P18640
A	1297	SER	-	EXPRESSION TAG	UNP P18640
A	1298	HIS	-	EXPRESSION TAG	UNP P18640
A	1299	PRO	-	EXPRESSION TAG	UNP P18640
A	1300	GLN	-	EXPRESSION TAG	UNP P18640
A	1301	PHE	-	EXPRESSION TAG	UNP P18640
A	1302	GLU	-	EXPRESSION TAG	UNP P18640
A	1303	LYS	-	EXPRESSION TAG	UNP P18640
B	861	MET	-	EXPRESSION TAG	UNP P18640
B	862	ARG	-	EXPRESSION TAG	UNP P18640
B	863	GLY	-	EXPRESSION TAG	UNP P18640
B	864	SER	-	EXPRESSION TAG	UNP P18640
B	865	MET	-	EXPRESSION TAG	UNP P18640
B	866	ALA	-	EXPRESSION TAG	UNP P18640
B	1292	PRO	-	EXPRESSION TAG	UNP P18640

Continued on next page...

Continued from previous page...

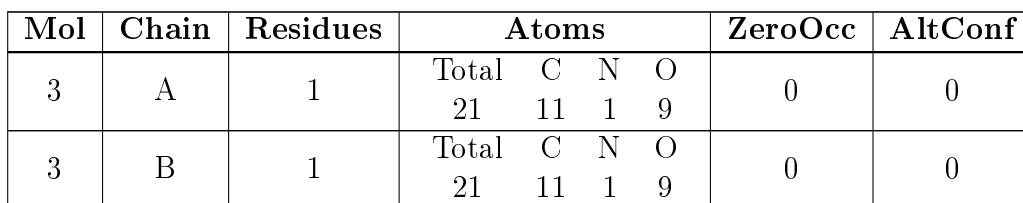
Chain	Residue	Modelled	Actual	Comment	Reference
B	1293	GLY	-	EXPRESSION TAG	UNP P18640
B	1294	SER	-	EXPRESSION TAG	UNP P18640
B	1295	ALA	-	EXPRESSION TAG	UNP P18640
B	1296	TRP	-	EXPRESSION TAG	UNP P18640
B	1297	SER	-	EXPRESSION TAG	UNP P18640
B	1298	HIS	-	EXPRESSION TAG	UNP P18640
B	1299	PRO	-	EXPRESSION TAG	UNP P18640
B	1300	GLN	-	EXPRESSION TAG	UNP P18640
B	1301	PHE	-	EXPRESSION TAG	UNP P18640
B	1302	GLU	-	EXPRESSION TAG	UNP P18640
B	1303	LYS	-	EXPRESSION TAG	UNP P18640

- Molecule 2 is 5-N-ACETYL-BETA-D-NEURAMINIC ACID (three-letter code: SLB) (formula: $C_{11}H_{19}NO_9$).



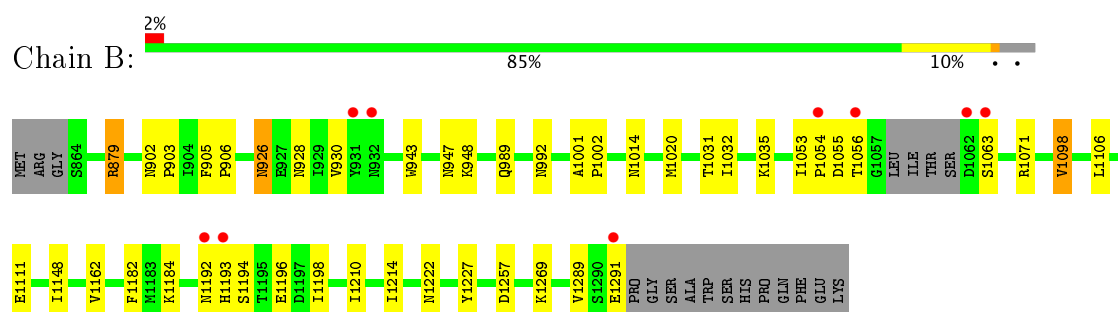
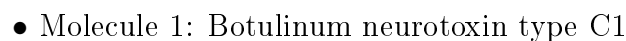
Mol	Chain	Residues	Atoms				ZeroOcc	AltConf
2	A	1	Total	C	N	O	0	0
			21	11	1	9		
2	B	1	Total	C	N	O	0	0
			21	11	1	9		

- Molecule 3 is O-SIALIC ACID (three-letter code: SIA) (formula: $C_{11}H_{19}NO_9$).



- | Mol | Chain | Residues | Atoms | ZeroOcc | AltConf |
|-----|-------|----------|--------------------|---------|---------|
| 4 | A | 432 | Total O
432 432 | 0 | 0 |
| 4 | B | 438 | Total O
438 438 | 0 | 0 |

- Molecule 1: Botulinum neurotoxin type C1



4 Data and refinement statistics

Property	Value	Source
Space group	P 1 21 1	Depositor
Cell constants a, b, c, α , β , γ	98.38Å 77.05Å 108.57Å 90.00° 116.73° 90.00°	Depositor
Resolution (Å)	44.29 – 2.15 44.28 – 2.15	Depositor EDS
% Data completeness (in resolution range)	99.6 (44.29-2.15) 99.6 (44.28-2.15)	Depositor EDS
R_{merge}	(Not available)	Depositor
R_{sym}	(Not available)	Depositor
$\langle I/\sigma(I) \rangle$ ¹	3.15 (at 2.16Å)	Xtriage
Refinement program	PHENIX (phenix.refine: 1.5_2)	Depositor
R, R_{free}	0.168 , 0.206 0.162 , 0.199	Depositor DCC
R_{free} test set	3950 reflections (5.02%)	DCC
Wilson B-factor (Å ²)	27.2	Xtriage
Anisotropy	0.383	Xtriage
Bulk solvent k_{sol} (e/Å ³), B_{sol} (Å ²)	0.34 , 47.8	EDS
L-test for twinning ²	$\langle L \rangle = 0.50$, $\langle L^2 \rangle = 0.34$	Xtriage
Estimated twinning fraction	0.008 for h,-k,-h-l	Xtriage
F_o, F_c correlation	0.96	EDS
Total number of atoms	7908	wwPDB-VP
Average B, all atoms (Å ²)	30.0	wwPDB-VP

Xtriage's analysis on translational NCS is as follows: *The largest off-origin peak in the Patterson function is 5.89% of the height of the origin peak. No significant pseudotranslation is detected.*

¹Intensities estimated from amplitudes.

²Theoretical values of $\langle |L| \rangle$, $\langle L^2 \rangle$ for acentric reflections are 0.5, 0.333 respectively for untwinned datasets, and 0.375, 0.2 for perfectly twinned datasets.

5 Model quality

5.1 Standard geometry

Bond lengths and bond angles in the following residue types are not validated in this section: SIA, SLB

The Z score for a bond length (or angle) is the number of standard deviations the observed value is removed from the expected value. A bond length (or angle) with $|Z| > 5$ is considered an outlier worth inspection. RMSZ is the root-mean-square of all Z scores of the bond lengths (or angles).

Mol	Chain	Bond lengths		Bond angles	
		RMSZ	# Z >5	RMSZ	# Z >5
1	A	0.38	0/3554	0.54	0/4810
1	B	0.39	0/3554	0.54	0/4810
All	All	0.39	0/7108	0.54	0/9620

There are no bond length outliers.

There are no bond angle outliers.

There are no chirality outliers.

There are no planarity outliers.

5.2 Too-close contacts

In the following table, the Non-H and H(model) columns list the number of non-hydrogen atoms and hydrogen atoms in the chain respectively. The H(added) column lists the number of hydrogen atoms added and optimized by MolProbity. The Clashes column lists the number of clashes within the asymmetric unit, whereas Symm-Clashes lists symmetry related clashes.

Mol	Chain	Non-H	H(model)	H(added)	Clashes	Symm-Clashes
1	A	3477	0	3344	23	0
1	B	3477	0	3344	56	0
2	A	21	0	18	0	0
2	B	21	0	18	0	0
3	A	21	0	18	0	0
3	B	21	0	18	0	0
4	A	432	0	0	1	0
4	B	438	0	0	5	0
All	All	7908	0	6760	78	0

The all-atom clashscore is defined as the number of clashes found per 1000 atoms (including hydrogen atoms). The all-atom clashscore for this structure is 6.

The worst 5 of 78 close contacts within the same asymmetric unit are listed below, sorted by their clash magnitude.

Atom-1	Atom-2	Interatomic distance (Å)	Clash overlap (Å)
1:A:1056:THR:H	1:A:1057:GLY:HA2	1.23	0.99
1:B:1098:VAL:HG13	1:B:1162:VAL:O	1.63	0.98
1:B:989:GLN:HE22	1:B:1035:LYS:H	1.15	0.90
1:A:989:GLN:HE22	1:A:1035:LYS:H	1.17	0.90
1:B:1098:VAL:HG21	1:B:1106:LEU:HD22	1.57	0.86

There are no symmetry-related clashes.

5.3 Torsion angles [i](#)

5.3.1 Protein backbone [i](#)

In the following table, the Percentiles column shows the percent Ramachandran outliers of the chain as a percentile score with respect to all X-ray entries followed by that with respect to entries of similar resolution.

The Analysed column shows the number of residues for which the backbone conformation was analysed, and the total number of residues.

Mol	Chain	Analysed	Favoured	Allowed	Outliers	Percentiles	
1	A	420/443 (95%)	404 (96%)	16 (4%)	0	100	100
1	B	420/443 (95%)	404 (96%)	16 (4%)	0	100	100
All	All	840/886 (95%)	808 (96%)	32 (4%)	0	100	100

There are no Ramachandran outliers to report.

5.3.2 Protein sidechains [i](#)

In the following table, the Percentiles column shows the percent sidechain outliers of the chain as a percentile score with respect to all X-ray entries followed by that with respect to entries of similar resolution.

The Analysed column shows the number of residues for which the sidechain conformation was analysed, and the total number of residues.

Mol	Chain	Analysed	Rotameric	Outliers	Percentiles	
1	A	387/403 (96%)	385 (100%)	2 (0%)	91	94

Continued on next page...

Continued from previous page...

Mol	Chain	Analysed	Rotameric	Outliers	Percentiles	
1	B	387/403 (96%)	383 (99%)	4 (1%)	80	84
All	All	774/806 (96%)	768 (99%)	6 (1%)	85	89

5 of 6 residues with a non-rotameric sidechain are listed below:

Mol	Chain	Res	Type
1	B	879	ARG
1	B	1098	VAL
1	B	926	ASN
1	A	992	ASN
1	B	992	ASN

Some sidechains can be flipped to improve hydrogen bonding and reduce clashes. 5 of 24 such sidechains are listed below:

Mol	Chain	Res	Type
1	B	877	GLN
1	B	989	GLN
1	B	1262	ASN
1	B	926	ASN
1	B	928	ASN

5.3.3 RNA [i](#)

There are no RNA molecules in this entry.

5.4 Non-standard residues in protein, DNA, RNA chains [i](#)

There are no non-standard protein/DNA/RNA residues in this entry.

5.5 Carbohydrates [i](#)

There are no carbohydrates in this entry.

5.6 Ligand geometry [i](#)

4 ligands are modelled in this entry.

In the following table, the Counts columns list the number of bonds (or angles) for which Mogul statistics could be retrieved, the number of bonds (or angles) that are observed in the model and

the number of bonds (or angles) that are defined in the Chemical Component Dictionary. The Link column lists molecule types, if any, to which the group is linked. The Z score for a bond length (or angle) is the number of standard deviations the observed value is removed from the expected value. A bond length (or angle) with $|Z| > 2$ is considered an outlier worth inspection. RMSZ is the root-mean-square of all Z scores of the bond lengths (or angles).

Mol	Type	Chain	Res	Link	Bond lengths			Bond angles		
					Counts	RMSZ	# Z > 2	Counts	RMSZ	# Z > 2
3	SIA	A	6859	-	18,21,21	0.97	1 (5%)	19,31,31	1.13	2 (10%)
2	SLB	A	6875	-	18,21,21	1.03	1 (5%)	19,31,31	1.17	2 (10%)
3	SIA	B	6859	-	18,21,21	0.82	1 (5%)	19,31,31	1.17	1 (5%)
2	SLB	B	6875	-	18,21,21	0.97	1 (5%)	19,31,31	0.96	2 (10%)

In the following table, the Chirals column lists the number of chiral outliers, the number of chiral centers analysed, the number of these observed in the model and the number defined in the Chemical Component Dictionary. Similar counts are reported in the Torsion and Rings columns. '-' means no outliers of that kind were identified.

Mol	Type	Chain	Res	Link	Chirals	Torsions	Rings
3	SIA	A	6859	-	-	0/14/38/38	0/1/1/1
2	SLB	A	6875	-	-	0/14/38/38	0/1/1/1
3	SIA	B	6859	-	-	0/14/38/38	0/1/1/1
2	SLB	B	6875	-	-	0/14/38/38	0/1/1/1

All (4) bond length outliers are listed below:

Mol	Chain	Res	Type	Atoms	Z	Observed(Å)	Ideal(Å)
3	B	6859	SIA	O2-C2	2.97	1.43	1.39
2	A	6875	SLB	O2-C2	3.43	1.43	1.39
3	A	6859	SIA	O2-C2	3.58	1.43	1.39
2	B	6875	SLB	O2-C2	3.59	1.43	1.39

The worst 5 of 7 bond angle outliers are listed below:

Mol	Chain	Res	Type	Atoms	Z	Observed(°)	Ideal(°)
2	A	6875	SLB	C6-C5-N5	-3.42	104.98	111.00
3	B	6859	SIA	C6-C5-N5	-3.40	105.02	111.00
2	B	6875	SLB	C6-C5-N5	-2.85	105.98	111.00
3	A	6859	SIA	C6-C5-N5	-2.83	106.02	111.00
3	A	6859	SIA	C4-C5-N5	-2.74	104.75	110.40

There are no chirality outliers.

There are no torsion outliers.

There are no ring outliers.

No monomer is involved in short contacts.

5.7 Other polymers

There are no such residues in this entry.

5.8 Polymer linkage issues

There are no chain breaks in this entry.

6 Fit of model and data [i](#)

6.1 Protein, DNA and RNA chains [i](#)

In the following table, the column labelled ‘#RSRZ> 2’ contains the number (and percentage) of RSRZ outliers, followed by percent RSRZ outliers for the chain as percentile scores relative to all X-ray entries and entries of similar resolution. The OWAB column contains the minimum, median, 95th percentile and maximum values of the occupancy-weighted average B-factor per residue. The column labelled ‘Q< 0.9’ lists the number of (and percentage) of residues with an average occupancy less than 0.9.

Mol	Chain	Analysed	<RSRZ>	#RSRZ>2	OWAB(Å ²)	Q<0.9
1	A	424/443 (95%)	-0.43	9 (2%) 64 71	16, 27, 49, 88	0
1	B	424/443 (95%)	-0.40	9 (2%) 64 71	16, 27, 53, 91	0
All	All	848/886 (95%)	-0.42	18 (2%) 64 71	16, 27, 51, 91	0

The worst 5 of 18 RSRZ outliers are listed below:

Mol	Chain	Res	Type	RSRZ
1	A	864	SER	5.0
1	B	1056	THR	4.6
1	A	1056	THR	4.2
1	A	1062	ASP	4.0
1	B	1192	ASN	3.6

6.2 Non-standard residues in protein, DNA, RNA chains [i](#)

There are no non-standard protein/DNA/RNA residues in this entry.

6.3 Carbohydrates [i](#)

There are no carbohydrates in this entry.

6.4 Ligands [i](#)

In the following table, the Atoms column lists the number of modelled atoms in the group and the number defined in the chemical component dictionary. LLDF column lists the quality of electron density of the group with respect to its neighbouring residues in protein, DNA or RNA chains. The B-factors column lists the minimum, median, 95th percentile and maximum values of B factors of atoms in the group. The column labelled ‘Q< 0.9’ lists the number of atoms with occupancy less than 0.9.

Mol	Type	Chain	Res	Atoms	RSCC	RSR	LLDF	B-factors(\AA^2)	Q<0.9
2	SLB	A	6875	21/21	0.93	0.12	0.33	30,40,52,54	0
3	SIA	A	6859	21/21	0.95	0.14	0.12	26,35,38,42	0
2	SLB	B	6875	21/21	0.94	0.10	-0.05	30,40,49,56	0
3	SIA	B	6859	21/21	0.97	0.13	-0.06	24,31,37,38	0

6.5 Other polymers [i](#)

There are no such residues in this entry.